

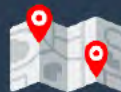


Spatial and Graph Summit @

ANALYTICS AND DATA SUMMIT 2020

All Analytics. All Data.
No Nonsense.

February 25-27, 2020



Welcome from BIWA Spatial and Graph User Group

Nick Salem, Distinguished Engineer, Neustar
and Technical Chair, Oracle Spatial and Graph SIG Board

Analytics and Data Summit 2020



The Spatial & Graph SIG User Community

Now part of BIWA User Group

We are a vibrant community of customers and partners that connects and exchanges knowledge online, and at conferences and events.

- **BIWA's first SIG user group**
- **6th year at Analytics and Data Summit**
- **Global participants – Americas and Europe, Africa, Asia**



BIWA Spatial and Graph SIG Board Volunteers

- **Board/Active Volunteers**

- Dan Abugov, *HERE*
- Nick Salem, *Neustar*
- Wayne Van Sluys, *InterRel*

- **Members at Large**

- Keith Hare, *JCC Consulting*
- Steve MacCabe, *Safe Software*
- Arnold Meijer, *TomTom*

- **Oracle Advisers**

- Jean Ihm
- Carol Palmer



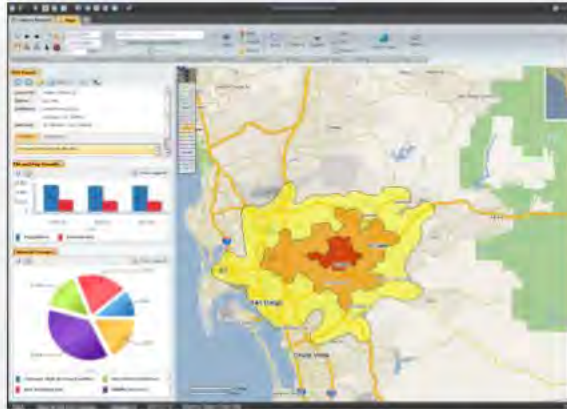
Thanks to BIWA Board for support and partnership!



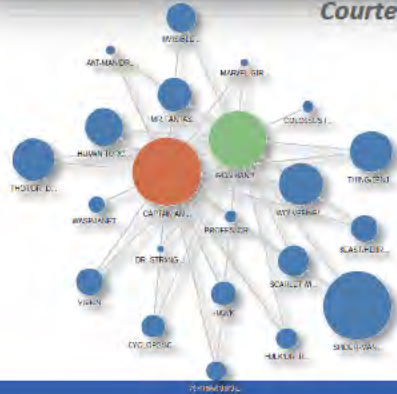
Thanks to Spatial and Graph sponsors



Spatial and Graph Analysis is about relationships



Courtesy Neustar



- Are things in the same location? Who is the nearest? What **tax zone** is this in? **Where can deliver in 35 minutes?** What is in my **sales territory**? Is this built in a flood zone?
- Which supplier am I most dependent upon? **Who is the most influential customer?** Do my products appeal to certain communities? What **patterns** are there in fraudulent behavior?



Spatial and Graph enhances business analytics



- Spatial and graph technologies enable additional insights
- Exploit location and relationship information into business workflows
- Manage and analyze data directly from Oracle Database and Oracle Analytics Cloud platforms
 - **Now free with Oracle Database!** No extra license required
- Spatial and graph **enhances Analytics, Big Data, Machine Learning**
- **Analytics, cloud services and developer-oriented** capabilities
 - Spatial Studio, Graph Server and Client 20.1, spatial and graph support in Oracle Autonomous Cloud Services (Autonomous Data Warehouse and Transaction Processing)



Selected Spatial and Graph Sessions



- **Maps & Business Analytics**

- How OUTFRONT Media Maps Hurricane Risk – Wednesday 1:00 rm 1740
- Maps for Everyone with Oracle Analytics – Thursday 8:45 rm 1720

- **Spatial & Mapping**

- Maps and Spatial Databases: How to use them – Tuesday 1:10 rm 1740
- Map Visualization with Oracle Spatial and Graph – Tues 2:15 rm 1740
- Intro to Oracle Spatial Studio – Tues 4:20 rm 1740

- **Graph**

- Demystifying Graph Analytics for the Non-expert – Tuesday 10:10 rm 1740
- Using Graphs To Analyze Customer Networks and Detect Fraud at Paysafe – Wednesday 2:20 rm 1740
- Graphs in Oracle (RDF vs PG – ‘Battle of the Graphs’)– Thursday 8:45 rm 1740

- **Hands On Labs**

- Property Graph from Scratch: data sources to graphs – Tues 3:35 rm 2100
- Visualize and Analyze Your Data with Spatial Studio – Thurs 10:55 rm 2100



Spatial and Graph Overview

- 30+ Spatial and Graph related sessions
 - See **yellow** track on agenda  Spatial and Graph
 - **Bldg 23 Room 1740** for most sessions (also, Analytics, ML tracks)
- **Tuesday:**
 - **Morning: Graph technical sessions**
 - **Afternoon: Spatial technical sessions, Graph hands on lab**
- **Wednesday:**
 - **Morning: Spatial / GIS use cases**
 - **Afternoon: Graph use cases**
- **Thursday:**
 - **Morning: Graph tech sessions & use cases (RDF), Spatial hands on lab**
 - **Afternoon: Graph and Spatial developer sessions, Graph HOL**



Engage with BIWA's Spatial and Graph SIG



- Talk with us this week! Look for badges with yellow ribbons
 - **Birds of a feather lunch – Wednesday 12-1pm at the Oracle Café (look for Spatial & Graph tables)**
- Join us – we're seeking new members
 - Engage with thought leaders on innovative spatial and graph use cases

Join us online tinyurl.com/oraclespatialcommunity

 [LinkedIn Oracle Spatial and Graph group](#)

 [@oraspatialsig](#)

 oraclespatialsig@gmail.com

