



Agile® e6.0

Agile e6.0.3

Installation Manual for Agile e6.0.3 on Windows Server

Part Number: INSWINSERVER-603A

Copyrights and Trademarks

Copyright © 1992-2007 Agile Software Corporation. All rights reserved.

You shall not create any derivative works of this publication nor shall any part of this publication be copied, reproduced, distributed, published, licensed, sold, stored in a retrieval system or transmitted in any form or by any means: electronic, mechanical, photocopying, or otherwise, without the prior written consent of Agile Software Corporation, 6373 San Ignacio Avenue, San Jose, California 95119-1200 U.S.A.; Telephone 408.284.4000, Facsimile 408.284.4002, or <<http://www.agile.com/>>.

The material in this document is for information only and is subject to change without notice. While reasonable efforts have been made in the preparation of this document to ensure its accuracy, Agile Software Corporation assumes no liability resulting from errors or omissions in this document or from the use of the information contained herein. Agile Software Corporation reserves the right to make changes in the product design without reservation and without notification to its users.

Agile e6 is a registered trademark. All other brands or product names are trademarks or registered trademarks of their respective holders.

Java and Solaris are registered trademarks of Sun Corporation.

Microsoft, Microsoft Windows, Microsoft Word, Microsoft Excel, Internet Explorer and SQL Server are registered trademarks of Microsoft Corporation.

Oracle and Oracle10g are registered trademarks of Oracle Corporation.

NOTICE OF RESTRICTED RIGHTS:

The Software is a “commercial item,” as that term is defined at 48 C.F.R. 2.101 (OCT 1995), consisting of “commercial computer software” and “commercial computer software documentation” as such terms are used in 48 C.F.R. 12.212 (SEPT 1995) and when provided to the U. S. Government, is provided (a) for acquisition by or on behalf of civilian agencies, consistent with the policy set forth in 48 C.F.R. 12.212; or (b) for acquisition by or on behalf of units of the Department of Defense, consistent with the policies set forth in 48 C.F.R. 227.7202-1 (JUN 1995) and 227.7202-4 (JUN 1995).

January 12, 2007

REVISIONS

Revision	Date	Pages Effected	Description
A	31/01/2007	All	Initial document

CONTENTS

Chapter 1 Introduction	1
Where to Go for More Information	1
Chapter 2 Preparing the Installation	2
Hardware and Software Requirements	2
Setting the Prerequisites	3
Split Server and Client Installation	3
Chapter 3 Setting up Licensing	4
Obtaining Licenses	4
Installing the License Software	4
Inserting License Keys	10
Updating the License Key Description for the Installed License Software	11
Chapter 4 Installing Agile e6	13
Upgrading from the Agile e6.0.1 Installation	13
Starting the Installation	13
Silent Oracle Installation	24
Possible Errors During the Oracle Silent Installation:	26
Changing the Default Passwords	26
Administrating Environments and Services	26
About the Modify, Repair, and Remove Options	27
Repairing Your Installation	27
Uninstalling Agile e6	27

Chapter 1

Introduction

This guide describes how to install Agile e6 for Oracle 10g2 (10.2.0.2) running under Microsoft Windows 2003 Enterprise Edition.

Note: Windows operating system versions, other than Windows 2003 Enterprise Edition, are currently not supported.

Where to Go for More Information

The instructions in this guide assume that you will perform the Agile e6 installation followed by the Oracle 10g installation. If you plan to use Agile e6 with an existing Oracle 10g installation, refer to the document *Administration Manual for Agile e6.0.3* (PLM603_Admin.pdf) for instructions on setting up the Agile e6 environment to work with your existing Oracle databases.

For complete information on installation prerequisites, including required operating system maintenance-level fixes and system patch levels, refer to the document *Prerequisites Guide includes the pre-installation Checklist* (PLM603_Inst_Reqs.pdf).

For information on database preparation and requirements, refer to the document *Installation Manual for Oracle 10g for Agile e6.0.3 on Windows* (PLM603_10g_Win.pdf).

Chapter 2

Preparing the Installation

This chapter provides an overview of the hardware and software required to install and run Agile e6 with Oracle 10g, as well as instructions to set the installation prerequisites.

Before installing Agile e6, do the following:

- ❑ Review the hardware and software requirements for your platform.
- ❑ Set the necessary installation prerequisites.
- ❑ Follow the instructions in the next chapter to set up licensing.

Hardware and Software Requirements

This section describes the minimal hardware and software requirements for performing an initial installation of Agile e6 in a test environment. For complete information on the requirements for a production environment, refer to *Prerequisites Guide includes the pre-installation Checklist* (PLM603_Inst_Reqs.pdf).

To install and run Agile e6, you need the following minimum requirements:

- ❑ Intel Pentium 1GHz equivalent, running Microsoft Windows 2003 Enterprise Edition with Service Pack 1 or higher
- ❑ Oracle 10g (10.1.0.4) or 10gR2 (10.2.02) – 10gR2 is on the Installation DVD included in Agile e6 kit
- ❑ Memory:

Agile e6 Server: 512 MB, plus additional 50 MB RAM per concurrent user

Database server: 6 MB RAM per connected user, plus 400 MB RAM for database services

- ❑ Swap space: Three times the amount of RAM
- ❑ Disk space for the installation:

Agile e6: 400 MB

Oracle 10g Server (silent installation): 1000 MB

Oracle 10g Client (silent installation): 400 MB

- ❑ Disk space for Oracle table spaces (test) during installation, with auto-extend on:

Table	Min Space (in MB)	Max Space (in MB)
system, temp, undo, sysauxs, user, tools	1500	6000
edb	100	1950
edb_idx	100	1950

edb_lob	5	1950
edb_tmp	5	1950
edb_tmpidx	5	1950

- One of the following web browsers (to run the Web Client):

Internet Explorer 6.0 with Service Pack 1

Mozilla 1.7.x

- Additional Software

Java 2 Runtime Environment in the Version 1.4.2 (which will be automatically installed during the installation if it is not installed yet).

Setting the Prerequisites

Before you start the Agile e6 installation, complete the following steps to set the necessary prerequisites:

1. Set the environment variable TEMP to a temporary directory, using System in the Windows Control Panel.
2. The environment variable JAVA_HOME needs to be set to the path where the Java Runtime Environment is installed.

Note: This can be done during the installation of the Agile e6 software.

3. If you intend to use the Agile e6 file management system (FMS), verify that the disk drives, on which the FMS directories will reside, use the NTFS file system.

To determine whether a disk drive uses the NTFS file system, check the General tab on the drive properties sheet. If the *File system* property is not set to NTFS for your drives, consult your system administrator for assistance to reformat them.

Administrators and the Agile e6 user edbserv (which is created during the installation) will require full access rights to the FMS directories.

4. The silent Oracle installation requires that no Oracle version is currently installed on the computer. This includes registry entries from a previous Oracle installation. Please refer to the **Deinstall Oracle for Windows** section in the **Chapter 3** of the *Installation Manual for Oracle 10g for Agile e6.0.3 on Windows* (PLM603_10g_Win.pdf) for more information.

Split Server and Client Installation

The combined Server and Client installation has been split for Agile e6.0.3:

- Agile e6 Client
- Agile e6 Server

Note: Because of the splitting of Server and Client the two installations cannot share the same installation directory.

Chapter 3

Setting up Licensing

To allow users access to PLM functionality, Agile e6 requires valid licenses. This section describes how to install the license software and insert the required license keys prior to installing Agile e6.

Obtaining Licenses

Agile e6 uses FELICS, a license management tool, to handle licenses. To obtain licenses you will need to provide the Host ID of the system on which the FELICS License Server will run.

1. To determine the Host ID, run the `uchostid.exe` program, which is distributed on the Agile e6 DVD under the following directory:

`\licemgr\windows`

2. Mail the Host ID to: vi@agile.com to get the licenses for your installation.

The FELICS License Software has three components:

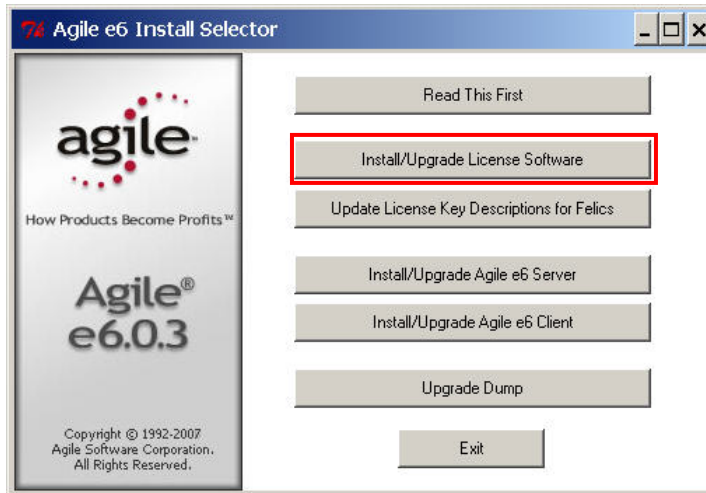
- ❑ The FELICS License Server, which hosts the licenses for Agile e6. You can install the FELICS License Server on any system accessible by the Agile e6 server. It is of advantage to install it on the database machine.
- ❑ The FELICS Agent, which communicates with the FELICS and Agile e6 servers to check the validity of licenses for the Agile e6 clients. The FELICS Agent must be installed on the same machine as the Agile e6 server and FileServer.
- ❑ The FELICS Tools, which are utilities for importing and managing license keys. The FELICS Tools should typically be installed on the same machine as the FELICS License Server and on the administrator's PC.

Installing the License Software

To install the FELICS software components complete the following steps:

1. Insert the Agile e6 Installation DVD.

If the Autostart feature is enabled on the machine, the Agile e6 main setup window opens automatically.

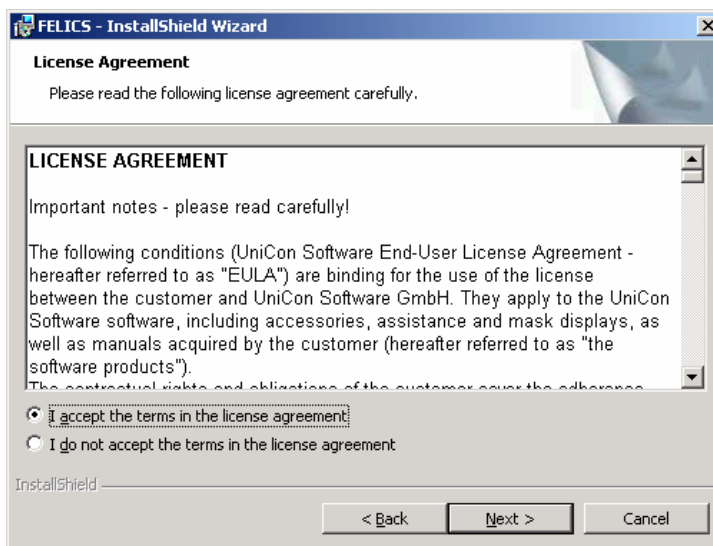


If the CD/DVD autostart feature is not enabled, open the window manually by double-clicking the file `setup.bat` in the root directory of the DVD.

Note: For the latest information on the Agile e6 installation, click Read This First.

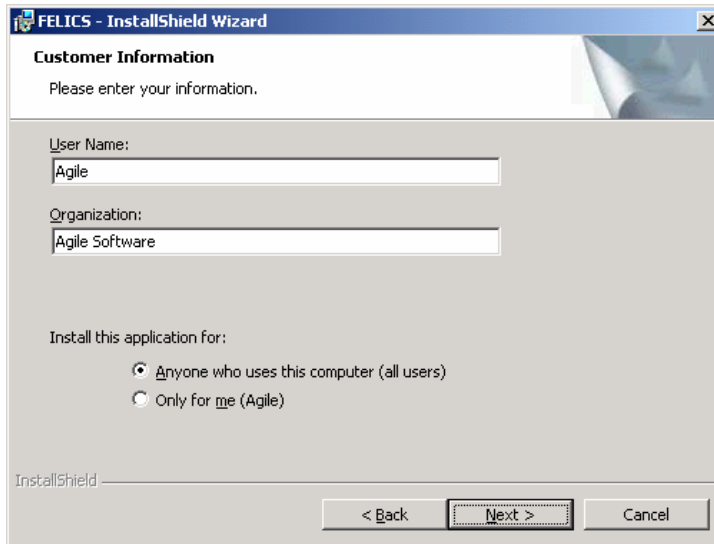
2. Click **Install/Upgrade License Software** and select your preferred language in the Language Options dialog box.

The License Agreement window is opened.



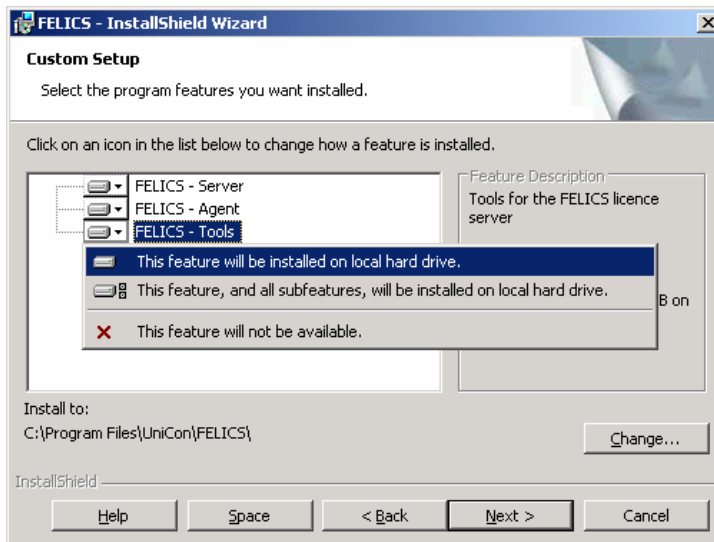
3. Read the License Agreement carefully and select **I accept the terms in the license agreement**. Click **Next**.

The Customer Information window is opened.



4. Update the information in the **User Name** and **Organization** fields if necessary.
5. Select one of the following installation options and click Next.
 - Anyone who uses this computer (all users) - recommended
 - Only for me

The Custom Setup window is opened.



6. Install the appropriate FELICS components based on your configuration, and click **Change** if you want to change the directory where the FELICS software will be installed.

Note: The installation path **must not** contain any blanks, which it will have if you install it on an English Windows system.

To include a component in the installation, select it, right-click it, and then select **This feature will be installed on local hard drive**.

Note: The following components are available:

- FELICS Server
- FELICS Agent
- FELICS Tools

Note: Install the rest of the FELICS components if you are distributing the components to different systems.

You need the FELICS Agent on the Agile e6 server and the Agile e6 FileServer machine (if Distributed File Management (DFM) is used).

It is recommended to install the FELICS License Server on the database machine.

The FELICS Tools should typically be installed on the same machine as the FELICS License Server.

7. Click **Next** to continue.

If the FELICS server is selected for installation, the FELICS – Server Configuration is opened.

Note: If the FELICS server is not selected for installation, continue with step 8.

For an initial installation, use the default entries:

- FELICS – Masterserver

Note: If you select FELICS-Backup Server or FELICS-Proxy Server, the FELICS Master Server name must also be entered.

- UDP

Note: Select TCP instead of UDP if you use more than 40 clients, which also implies that the Admin-Port needs to be different from the Agent-Port. We recommend to use 12346 for the Admin-Port in that case.

- Admin-Port 12345
- Agent-Port 12345

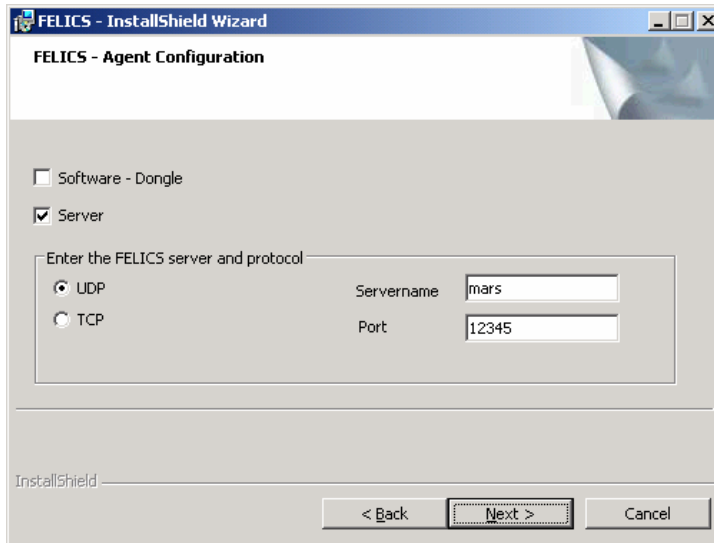
Note: If the default port numbers are already in use, change them to port numbers that are available on your machine.

Refer to the document *Administration Manual for Agile e6.0.3* (PLM603_Admin.pdf) for information on determining the active and used ports on your system.

Consult your Agile Customer Support representative for information about the other options in this window.

8. Click **Next** to continue.

The FELICS Agent Configuration window is opened.

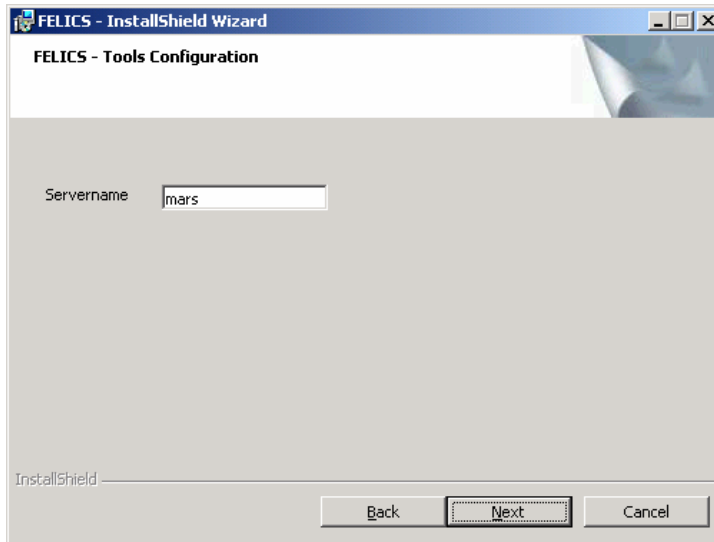


9. Select the **Server** and **UDP** options for a typical initial configuration.

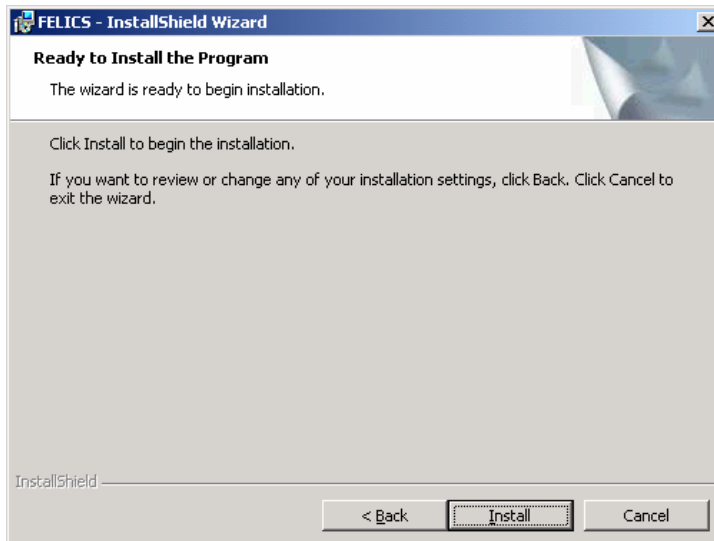
Note: Use TCP instead of UDP if you use more than 40 clients.

10. Enter the name of the server where the FELICS License Server is installed (e.g. *mars*) and the port number where it can be reached (for example the default *12345*).
11. Click **Next** to continue.

The FELICS – Tools Configuration window will only open if you selected the FELICS Tools in the Custom Setup section.



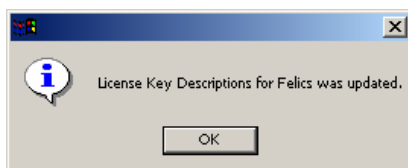
12. Enter the server name again, and click **Next** to continue.



13. Click **Install** to start the installation.

When the installation is completed, click **Finish** to exit the FELICS installation.

The license key description is updated and a message is issued.



14. Click **OK**.

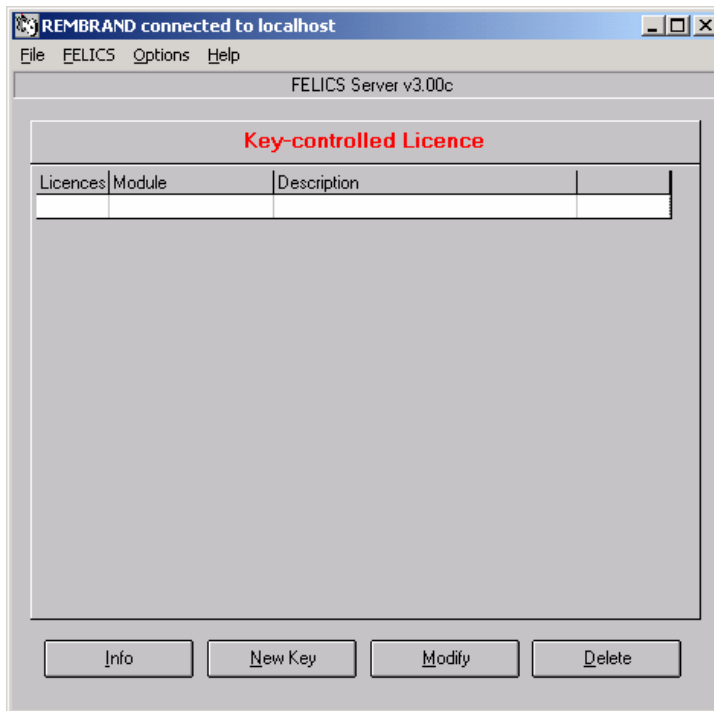
Now you can enter the licenses to run Agile e6.

Inserting License Keys

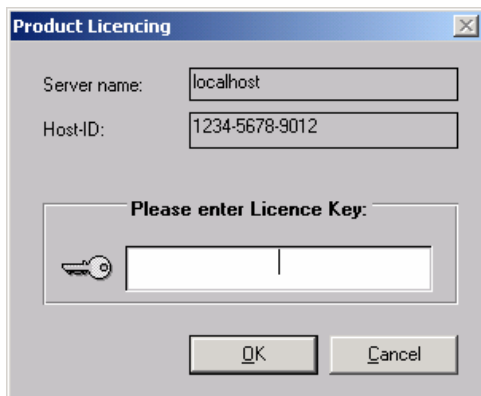
1. Start the FELICS license tool REMBRAND from the Windows Start menu.
2. Enter the name and port of the machine on which the FELICS License Server will run.
3. Click **Connect** to connect to the FELICS License Server.

You do not need a password to connect.

The REMBRAND license tool is opened.

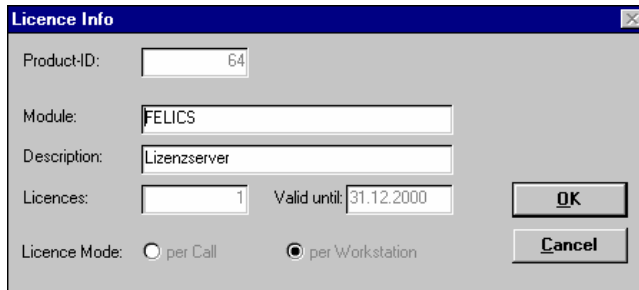


4. Click **New Key** and enter the FELICS Server License key provided by the Agile license administrator.



5. Click **OK**.

The License Info window is opened.



The 'Licence Info' dialog box contains the following fields and options:

- Product-ID: 64
- Module: FELICS
- Description: Lizenzserver
- Licences: 1
- Valid until: 31.12.2000
- Licence Mode: per Call, per Workstation
- Buttons: OK, Cancel

6. Click OK to confirm the information.
7. Repeat Step 4 to 6 to enter the other licenses provided by the Agile license administrator.

Note: Make sure to enter the license keys for DataView (usually designated RUN041 and DEV041); otherwise the Agile e6 clients will not run. It is also useful to fill in the description fields for future references.

8. Close REMBRAND.

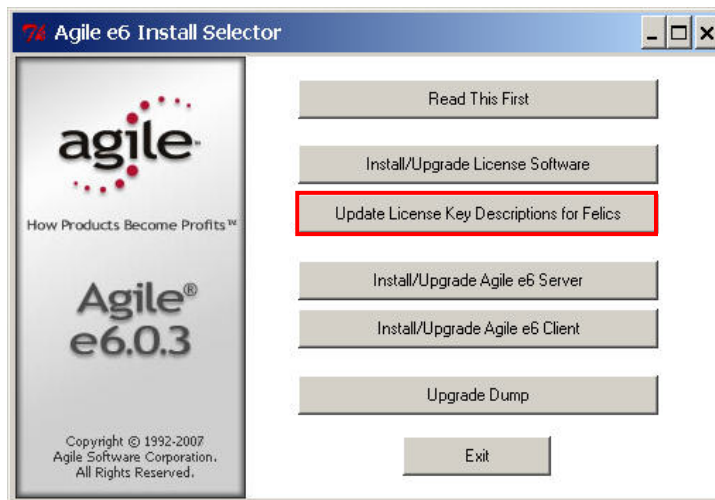
Now you can install Agile e6.

Updating the License Key Description for the Installed License Software

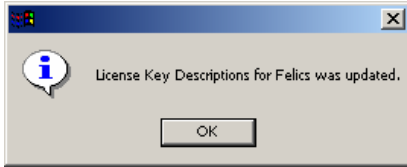
This will update the license key description as shown in the REMBRAND tool.

Note: This step is only needed if you want to use an older version of the License Software.

1. To update the License Key Description for the License Server stop the Felics License Server from the Services Control Panel.



2. Click the Update License Key Description for Felics button.
The license key description is updated and a message is displayed.



3. Click OK.

Chapter 4

Installing Agile e6

Agile e6 is a client-server application that uses a database as the application and data repository. Agile e6 also features secure, encrypted file management support known as the File Service (FMS).

The following components are available for installation:

- Server
- File Service (FMS)
- Database systems

Oracle

SQL Server (this will only configure the SQL Server Paths used by the Agile Server)

Note: Use an account with Windows Administrator privileges to install or uninstall Agile e6.

Upgrading from the Agile e6.0.1 Installation

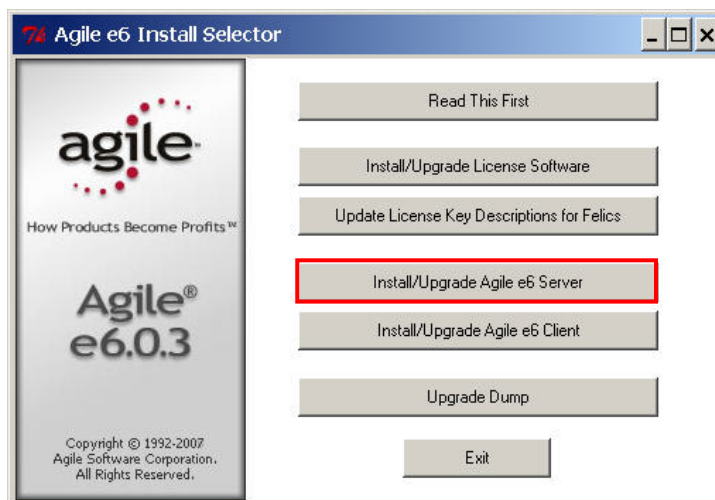
Please refer to *Upgrade Guide from e6.0.1 to Agile e6.0.3* (PLM603_Upgrade.pdf).

Starting the Installation

1. Insert the Agile e6 Installation DVD.

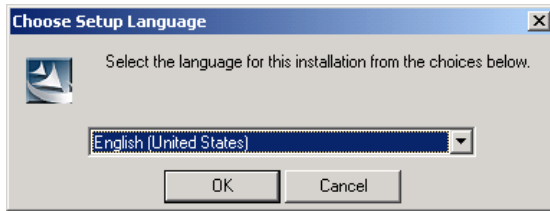
If the CD/DVD autostart feature is enabled, the Agile e6 main setup window opens automatically.

If the autostart feature is disabled, double-click the file `setup.bat` in the root directory of the DVD to start the installation.



Note: For the latest information on the Agile e6 installation, check the **Read This First** file on the DVD.

2. Click **Install/Upgrade Agile e6 Server**.

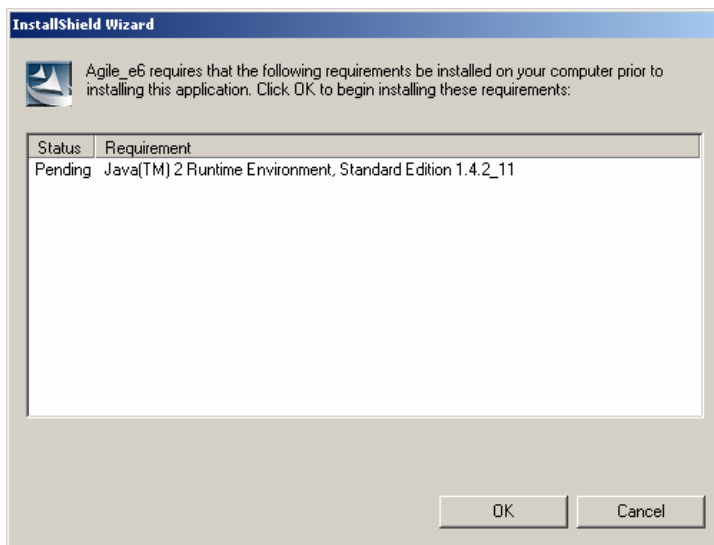


3. Select the language to use for the installation of Agile e6 and click **OK** to continue.

The installation setup checks if a Java 2 Runtime is installed that is needed for running the Java Client.

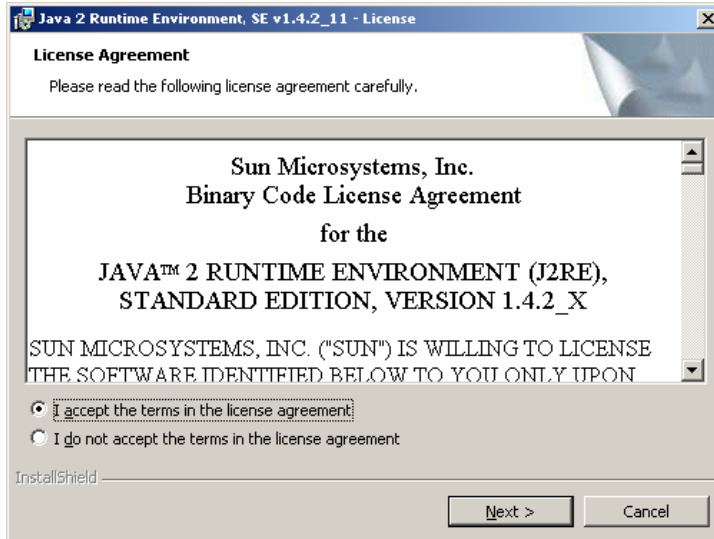
If a Java 2 Runtime Environment is installed go to Step 9 and continue with the Agile e6 Setup wizard.

If Java 2 Runtime Environment is not installed, the installation procedure will install it now.

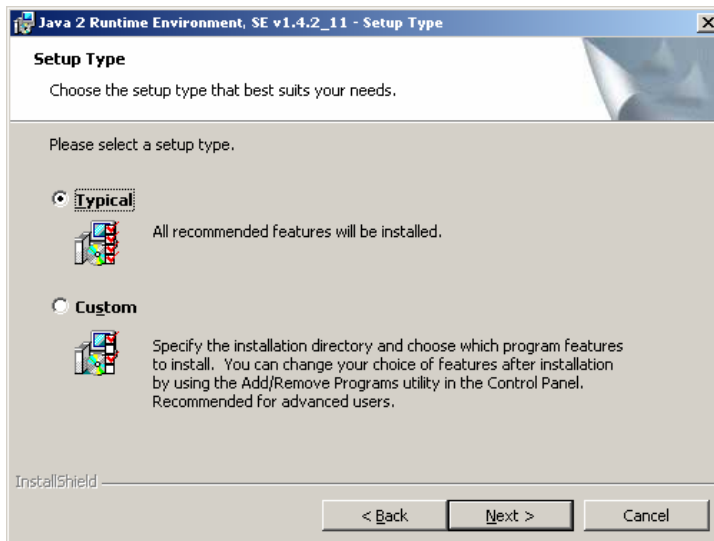


4. Click **OK** to start installing these requirements.

The Sun Java 2 Runtime Environment Installer will be started and the License Agreement window opens.

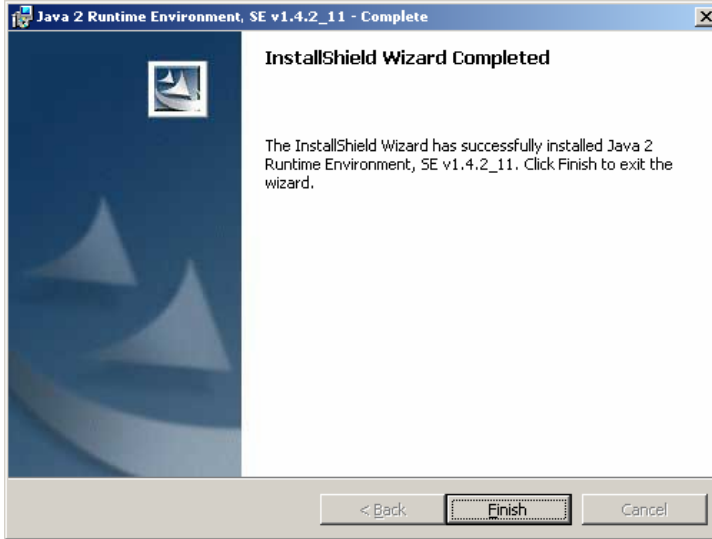


5. Read the license agreement carefully and select **I accept the terms in the license agreement**. Click **Next** to continue.
6. Select the setup type for installing the Java 2 Runtime Environment.

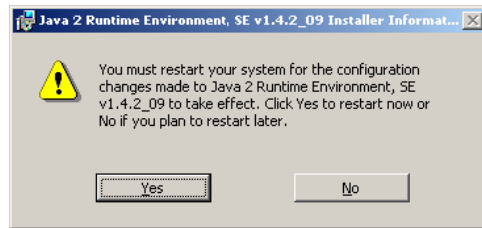


Note: It is recommended to use **Typical**.

7. Click **Next** to start the installation.



Note: It may be possible that the JRE Installer wants to reboot the machine after the JRE installation is finished.



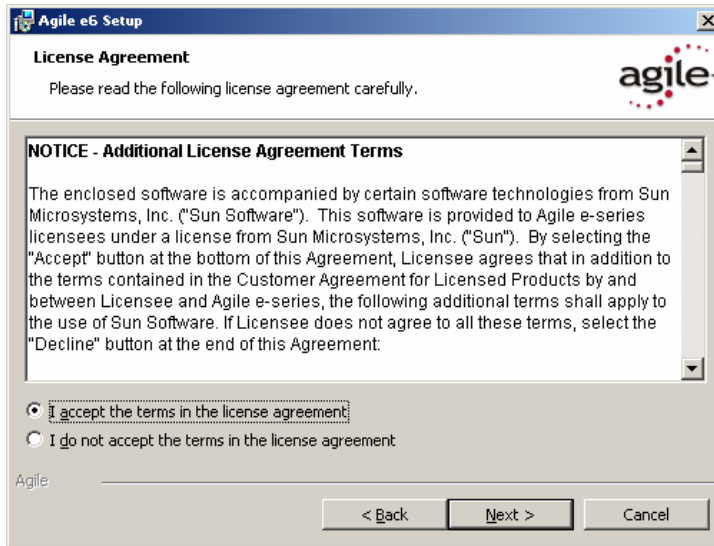
You can restart the Agile e6 Installation after the reboot, which will skip the JRE at that time, by running start.bat from the DVD.

8. When the installation is completed, click **Finish** to go back to the Agile e6 Setup wizard.

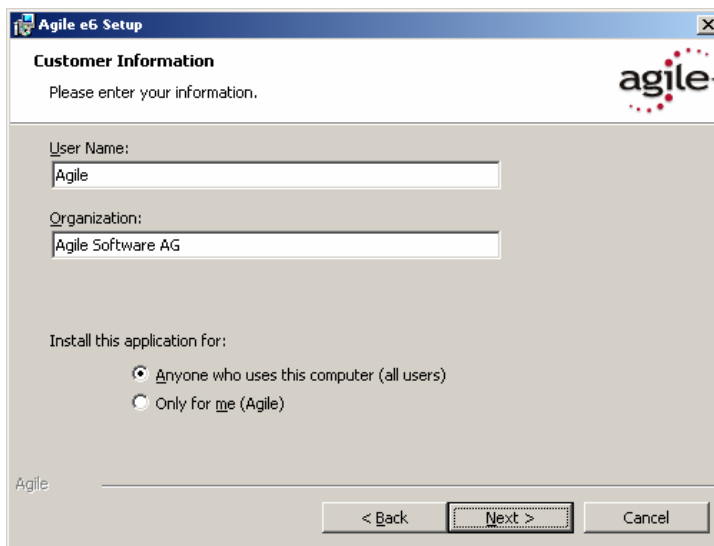


9. Click **Next** to continue.

The License Agreement window is opened.

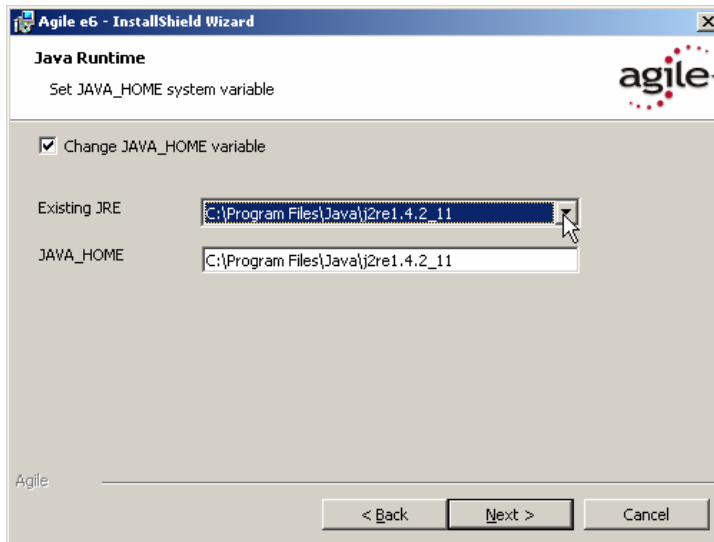


10. Read the license agreement carefully; select **I accept the terms in the license agreement** and click **Next** to continue .



11. Update user and organization name if necessary.
12. Select one of the installation options:
 - Anyone who uses this computer (all users) — recommended
 - Only for me (Agile)
13. Click **Next** to continue .

The Java Runtime Setup window is opened:

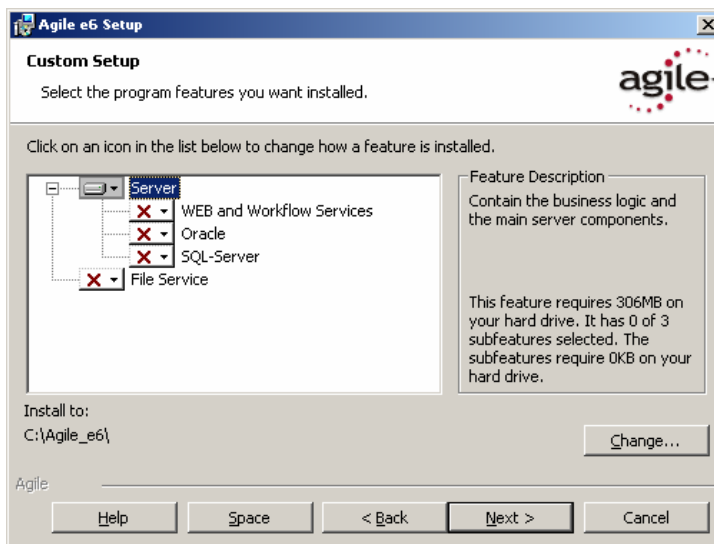


Note: The Installer searches for any installed Java Runtime Environments. Select the one that will be used for Agile e6.

Note: It is required that JAVA_HOME is set and points to the correct Java Runtime Environment. This can be set either here or in the system environment of your Windows operating system.

14. Select the Java 2 Runtime Environment Directory and click Next.

The Custom Setup window is opened.

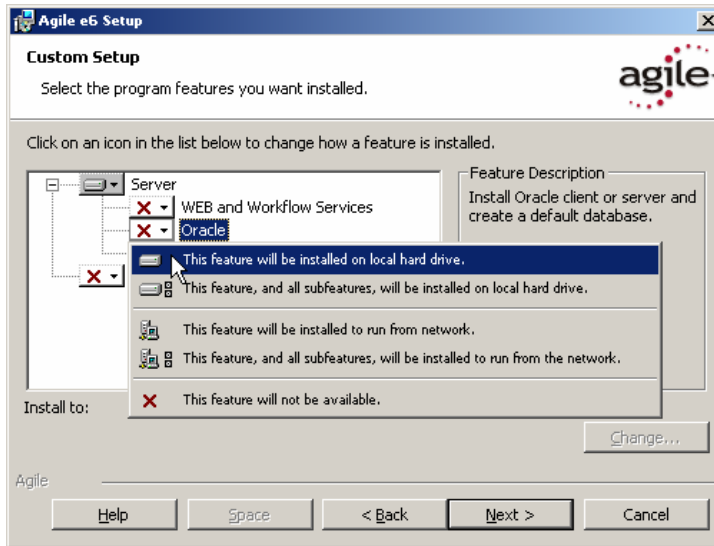


The Server program is automatically selected.

15. Click Change if you want to change the directory where Agile e6 will be installed.

Note: To perform an upgrade, select the installation folder of the existing software.

Note: The installation path must not contain blanks.



16. Specify the Agile e6 components you want to install.

To include a component in the installation, click it and then select **This feature will be installed on local hard drive**. You can include any of the following components:

- Server – the Agile e6 server software

WEB and Workflow services – the Agile e6 Business and Presentation Services.

Oracle – the Oracle 10g database system. The Oracle database will then be installed as part of the Agile e6 installation.

SQL Server (this will only configure the SQL Server Paths used by the Agile Server).

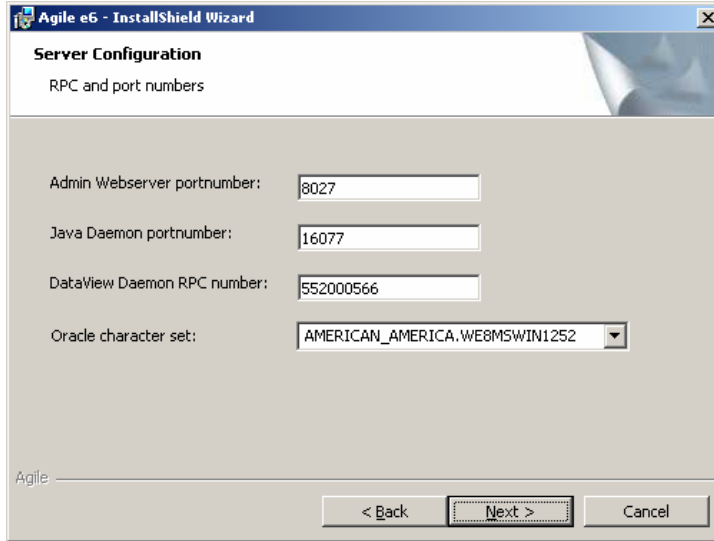
Note: You are only allowed to select one Database for the installation.

- File Service (FMS) – Agile e6 encrypted file management support

17. Click Next to continue.

The Server Configuration for RPC, port numbers and the Oracle character set window is opened.

Note: The Oracle character set will not show up if the SQL Server was selected during the Custom Setup.



Please note the following restrictions for the values you can choose:

- The Admin Webserver portnumber must be between 1 and 65535.

We recommend to use numbers higher than 1024 to avoid conflicts with well known services.

- The Java Daemon portnumber must be between 1 and 65535.

We recommend to use numbers higher than 1024 to avoid conflicts with well known services.

- The DataView Daemon RPC number must be between 550000000 and 990000000

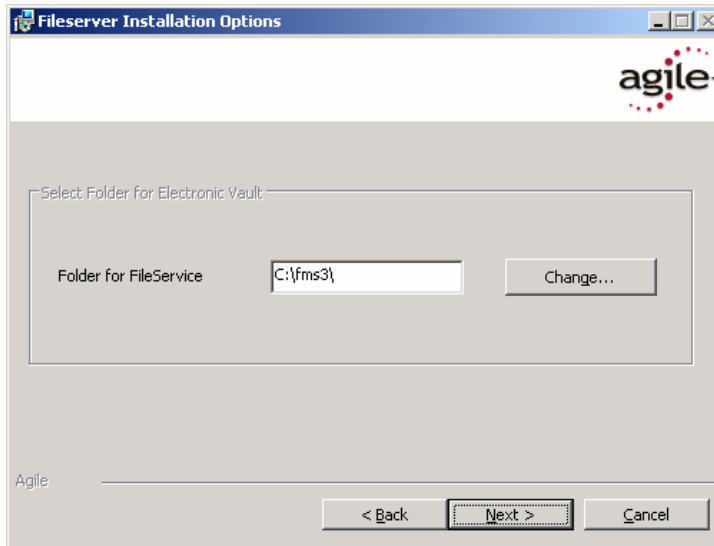
The Oracle character set settings can be set to AMERICAN_AMERICA.WE8ISO8859P15, AMERICAN_AMERICA.WE8MSWIN1252 or be modified to match the old settings.

Note: If you have an existing dump containing customer data with non-ASCII characters, you need to set it to the old value, e.g. AMERICAN_AMERICA.WE8ISO8859P15. The old NLS_LANG value can be found in the file EP_ROOT\axalant\cmd\axalant_srv.cmd. When upgrading the current installation, the value is modified automatically. We recommend setting it to WE8MSWIN1252 if this is a complete new installation where no dump with existing data will be used.

Note: The AMERICAN_AMERICA part of this setting should not be modified.

18. Click Next to continue.

If you have selected the File Service to be installed, the Agile e6 Fileserver Installation Options window opens.



19. Enter the correct installation path for the Agile e6 File Service.

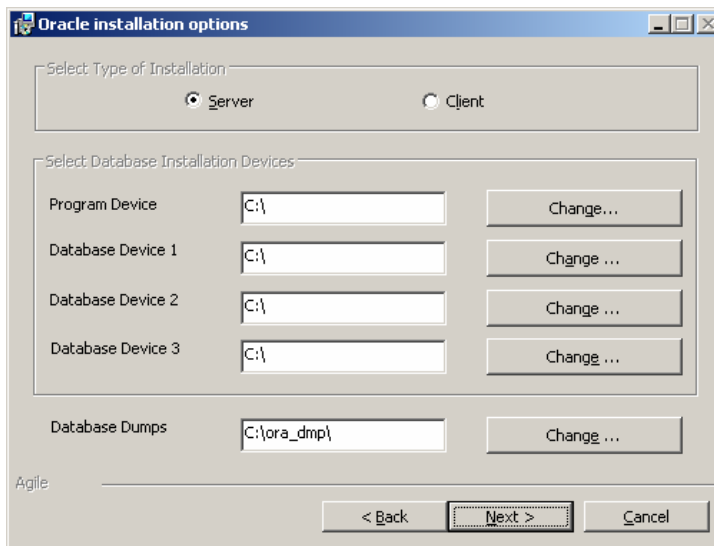
Note: If you perform an upgrade, select the existing File Service folder.

A secure, encrypted file management system will be installed.

20. Click Next to continue.

Note: If Oracle was selected in the Custom Setup, the following window is opened.

The Oracle installation options window is opened.



21. For **Select Type of Installation**, select one of the following:

- Server** – Installs a complete Oracle 10g Server, which includes an installation of the Oracle software itself and the creation of a database for Agile e6.
- Client** – Installs Oracle 10g client software only.

Note: Select the Client option only if the database to be used with Agile e6 is installed on a separate database server. With this option, only the Oracle client software will be installed. The Oracle client software enables the communications between the Agile e6 Server and an existing database server.

- 22.** Specify the locations of the physical devices to be used for the Oracle program and databases. The default folders point to the root directory of drive C (“C:\”).

The installation program creates the following directories on the specified drives:

- Oracle on the drive specified for *Program Device*
- Oradata on the drive specified for *Database Device 1*
- Oradata on the drive specified for *Database Device 2*
- Oradata on the drive specified for *Database Device 3*
- The Database Dumps directory as specified in the above window

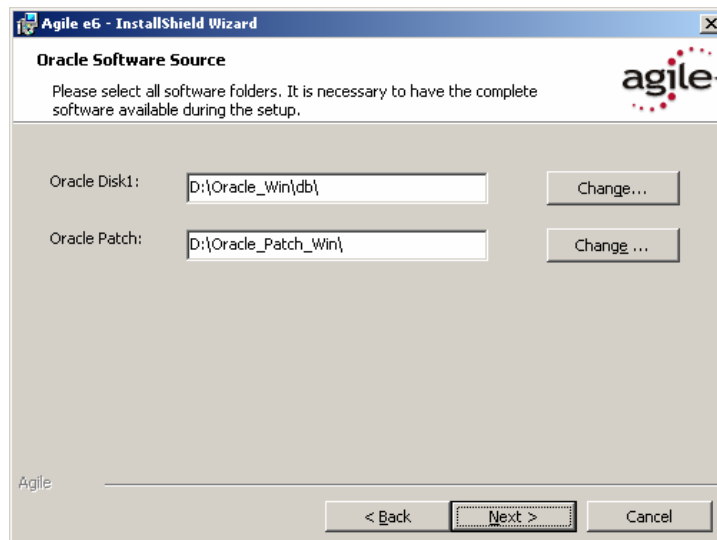
If you specify an incorrect path in any of the fields, the installation program uses the correct information previously entered into the field.

The software and tablespaces are installed as follows:

- Program Device: Oracle software, edb, control file 1
- Database Device 1: edb_idx, control file 2
- Database Device 2: undo, archive, temp, control file 3
- Database Device 3: redolog, system, tools, users

The redologs and the Windows page files must not be stored on the same disk.

- 23.** Click Next to continue.



- 24.** Select the Oracle software location.

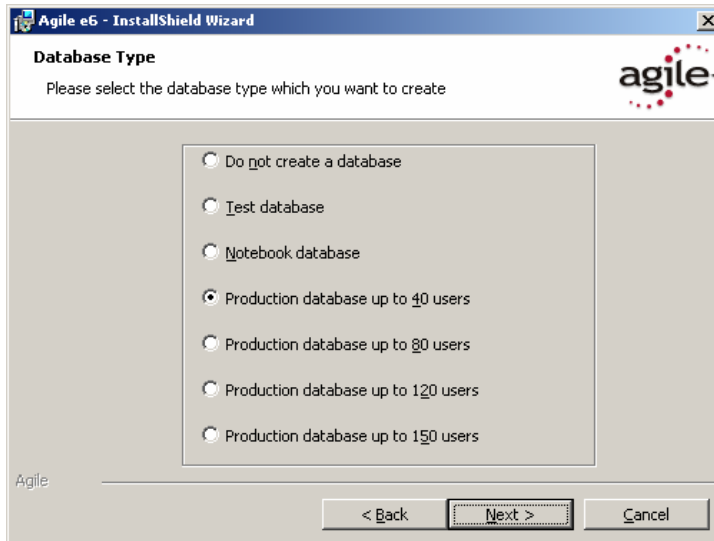
Note: You normally do not need to change the default values if you start the Agile e6 Setup wizard from the DVD, but these folders, containing the Oracle Installation, must be available when the Oracle setup starts.

You are not asked to insert any disk later. The installation will fail if the setup cannot find parts of the software.

Make sure that the Oracle Disk1 and the Oracle Patch folder points to the correct directories.

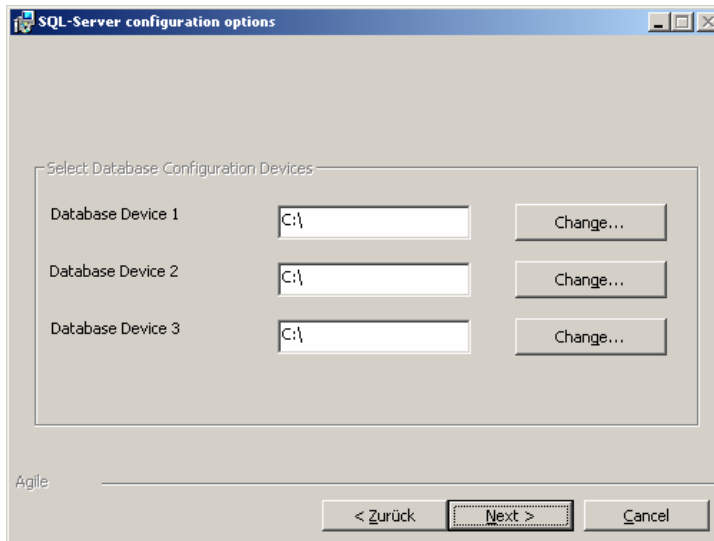
Both folders should contain a stage directory which has a products.xml file.

25. Click Next to continue.



26. Select your preferred database size for your Oracle server installation.

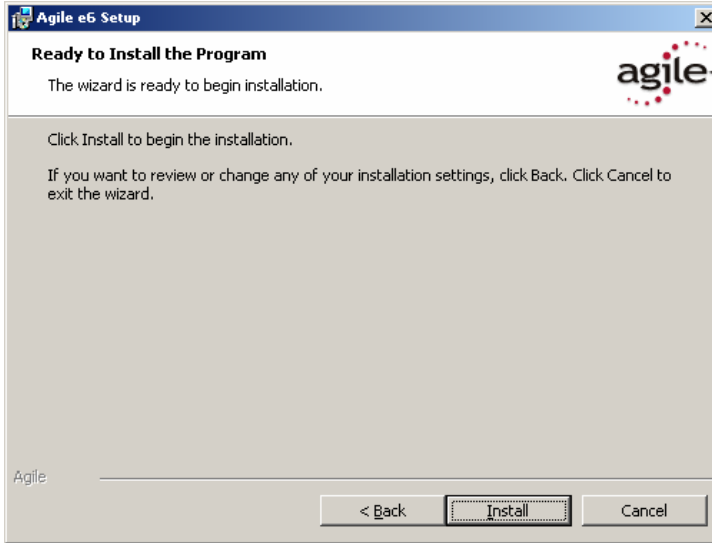
Note: If SQL Server was selected in the Custom Setup, the following window is opened.



27. Specify the locations of the physical devices to be used for the SQL Server databases. The default folders point to the root directory of drive C ("C:\").

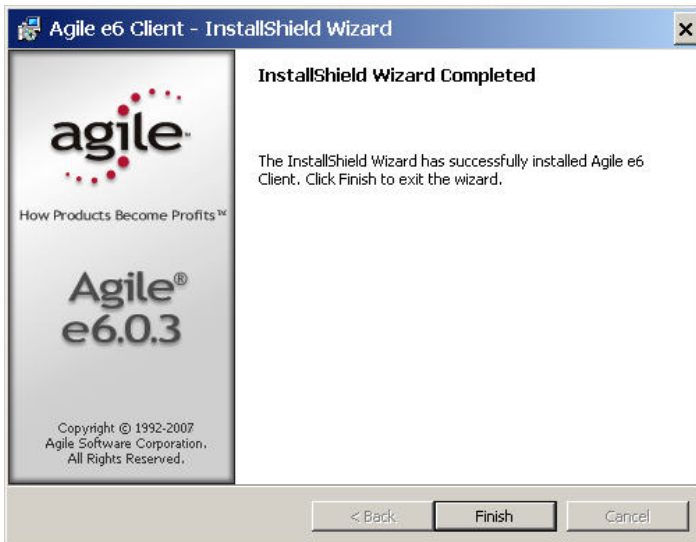
Note: The following directories for installing the tablespaces are necessary when creating an environment with the Agile Admin Server.

- Database Device 1: edb, edb_lob, edb_tmpidx
- Database Device 2: edb_idx, edb_tmp
- Database Device 3: edb_log



28. Click **Install** to start the Agile e6 installation.

If the installation was successful, the following window is opened:



29. Click **Finish** to exit the Setup Wizard.

Silent Oracle Installation

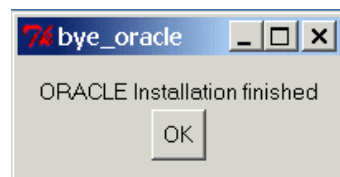
If you selected Oracle in the Custom Setup window, the Oracle installation is started automatically, followed by the import of the Agile e6 database dump.

If the Oracle DVD is not found, the following message is displayed:



1. Insert the Oracle 10g Server DVD or provide the Oracle software in the defined paths.

Note: The installation process should take approximately 30 to 60 minutes. The actual time will depend on the speed of your machine.



2. Click OK to complete the installation.
3. To close the two Oracle Universal Installer windows, press the Enter key in these windows.
4. If the Agile e6 main setup window is opened, close it by clicking the Close button in the upper right corner.
5. If the Oracle installation fails, check the log files for possible errors in *Installation Manual for Oracle 10G for Agile e6.0.3 on Windows* (PLM603_10g_Win.pdf; section Install Errors).
6. You can restart the Oracle installation by uninstalling Oracle (PLM60_10g_Win.pdf; section Deinstall Oracle) and starting the install script (oracleinstall.cmd).

```
cd c:\Agile_e6\axalant\cmd
```

Start the following command with the option where you installed Agile e6:
 oracleinstall.cmd c:\Agile_e6

The install information is retrieved from the configuration file `init\ep.edb` (see description at the end of the document).

A new entry for Agile e6 appears on the Windows Start menu.

7. To test the Agile e6 installation, start the Agile e6 Windows Client.

For a new installation, the default entries in the Startup window should be acceptable. The password for the default user *DEMOEP* is DEMOEP.

Note: The first time you click the Mask Generator button in the Windows Client to regenerate a mask, you must be logged in with Windows Administrator privileges.

Note: The default password for the Oracle user 'system' is: oracle.

Possible Errors During the Oracle Silent Installation:

The following errors might be reported during the silent installation of the Oracle server and can be ignored:

- ERROR: Cannot add user to application access ACL.

The trust relationship between the primary domain and the trusted domain failed. (6fc)

- ERROR: Cannot add user to application access ACL.

The trust relationship between the primary domain and the trusted domain failed. (6fc)

User could not be added 1378

Setup is successful.

Changing the Default Passwords

During the installation process, the system users *axalantrt* and *edbserv* are created for Agile e6. For security reasons you should change the default password (4eigner:plm) for these users and adjust their properties so the passwords will never expire.

1. Open the Windows Control Panel and use the Users and Passwords utility to change the default password for *axalantrt* and *edbserv*.

Note: When you change these passwords, you must also update the passwords of the following dependent services accordingly:

- Agile_eAdmin
- Agile_eDaemon
- Agile_eFileService
- Agile_eJavaDaemon

These services are accessible from Administrative Tools in the Windows Control Panel, under Services. To change the password for a service, click the Log On tab on its properties sheet.

2. Reboot your machine.

Administrating Environments and Services

Follow the steps below to administrate your Agile e6 and Web Presentation Service environments. For more information, refer to the document *Administration Manual for Agile e6.0.3* (PLM603_Admin.pdf).

1. Open a web browser and enter the following URL:

<http://localhost:8027/>

In the URL, *localhost* is the server name of the machine on which Agile e6 was installed.

Or use:

<https://localhost:8028/>

to select the secure webserver.

2. Click **Administrate Agile e6** (User: plm, Password: plm60) to create or modify PLM environments.
3. Click **Administrate Web Presentation Service** to configure and start Agile e6 WEB and Workflow services.

For further help, refer to the Agile e6 Read This First document on the product DVD or the online documentation, which can be found under \axalant\hlp\doc_ep\ in the directory where you installed Agile e6. To view the online help, open the file plm.chm.

About the Modify, Repair, and Remove Options

If you start the Agile e6 setup program and the Windows installer detects a previously installed version of Agile e6 on your system, it presents options for modifying, repairing, or removing the existing installation.

Note: The Modify option is currently not supported.

Repairing Your Installation

You can use the Repair function to fix an Agile e6 installation that is not working properly. If the Repair function discovers that the key file for an Agile e6 component is damaged or missing, it restores all parts of the component—such as its registry entries, service entries, shortcut, and files.

Note: Although the Repair function is available from the Agile e6 product DVD, you **must** initiate the function from Control Panel to successfully restore all files.

1. Open Add/Remove Programs in the Windows Control Panel.
2. Select Agile e6 from the list of currently installed programs.
3. Click the link **Support Information**.
4. In the Support Info box, click the **Repair** button.
5. Insert the Agile e6 Installation DVD.

The repair process will take a few minutes.

6. When the process is completed, restart Windows.

Uninstalling Agile e6

Agile recommends that you use the Remove option in the Windows Control Panel to uninstall Agile e6.

1. Open Add/Remove Programs in the Windows Control Panel.
2. Select Agile e6 from the list of currently installed programs.
3. Click the **Remove** button.

Note: Oracle and the Java 2 Runtime Environment are not removed if you uninstall Agile e6.