



Agile® e6.0

Agile e6.0.3

Installation Manual for Microsoft SQL Server 2005

Part Number: INSMSSQL-603A

Copyrights and Trademarks

Copyright © 1992-2007 Agile Software Corporation. All rights reserved.

You shall not create any derivative works of this publication nor shall any part of this publication be copied, reproduced, distributed, published, licensed, sold, stored in a retrieval system or transmitted in any form or by any means: electronic, mechanical, photocopying, or otherwise, without the prior written consent of Agile Software Corporation, 6373 San Ignacio Avenue, San Jose, California 95119-1200 U.S.A.; Telephone 408.284.4000, Facsimile 408.284.4002, or <<http://www.agile.com/>>.

The material in this document is for information only and is subject to change without notice. While reasonable efforts have been made in the preparation of this document to ensure its accuracy, Agile Software Corporation assumes no liability resulting from errors or omissions in this document or from the use of the information contained herein. Agile Software Corporation reserves the right to make changes in the product design without reservation and without notification to its users.

Agile e6 is a registered trademark. All other brands or product names are trademarks or registered trademarks of their respective holders.

Java and Solaris are registered trademarks of Sun Corporation.

Microsoft, Microsoft Windows, Microsoft Word, Microsoft Excel, Internet Explorer and SQL Server are registered trademarks of Microsoft Corporation.

Oracle and Oracle8i are registered trademarks of Oracle Corporation.

NOTICE OF RESTRICTED RIGHTS:

The Software is a “commercial item,” as that term is defined at 48 C.F.R. 2.101 (OCT 1995), consisting of “commercial computer software” and “commercial computer software documentation” as such terms are used in 48 C.F.R. 12.212 (SEPT 1995) and when provided to the U. S. Government, is provided (a) for acquisition by or on behalf of civilian agencies, consistent with the policy set forth in 48 C.F.R. 12.212; or (b) for acquisition by or on behalf of units of the Department of Defense, consistent with the policies set forth in 48 C.F.R. 227.7202-1 (JUN 1995) and 227.7202-4 (JUN 1995).

January 11, 2007

REVISIONS

Revision	Date	Pages Effected	Description
A	31/01/2007	All	Initial document

CONTENTS

Chapter 1 Install Microsoft SQL Server 2005	1
Chapter 2 Service Pack 1	8
Chapter 3 Restore Database in MSSQL 2005	9
Restore Database	9
Run script after_restore.sql	10

Install Microsoft SQL Server 2005

This guide describes the installation of Microsoft SQL Server 2005 and how a database can be restored.

To install Microsoft SQL Server 2005 the following software versions are required:

- ❑ Microsoft Windows Server 2003 (English, for Europe)
- ❑ Microsoft SQL Server 2005 Enterprise Edition (English)

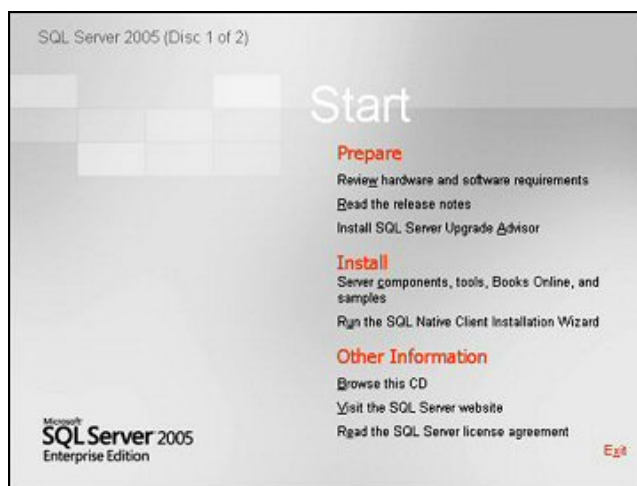
Note: The Microsoft SQL Server Native Client software must be installed on the Agile e6 Application Server when the Microsoft SQL Server is installed on a different server. To install it, run sqlncli.msi from the Agile e6 Application Server DVD placed in the WinRoot directory.

Note: Microsoft .NET Framework 2.0 is required for SQL Server 2005 and will be installed during the setup process.

Note: MDAC version 2.8 or later must be installed on both, on the database server and on the application server.

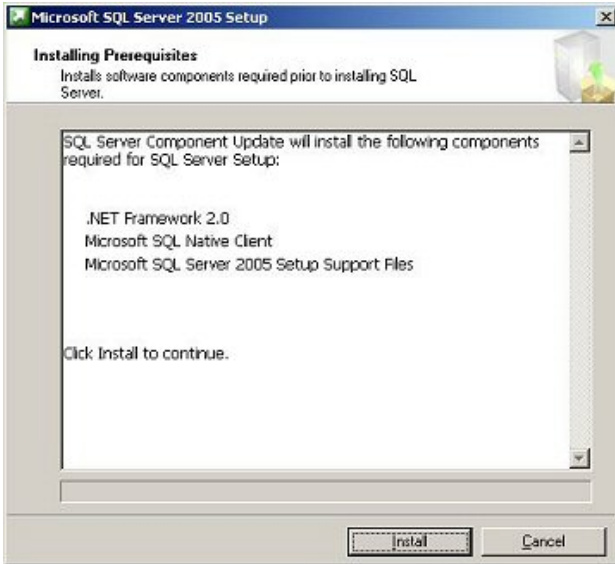
1. Insert the Installation CD and run the setup.

If you have Autostart activated, the Startup window opens automatically, displaying an overview of product and installation requirements.



2. Select Install, Server components, tools, Books Online, and sample to start the installation.

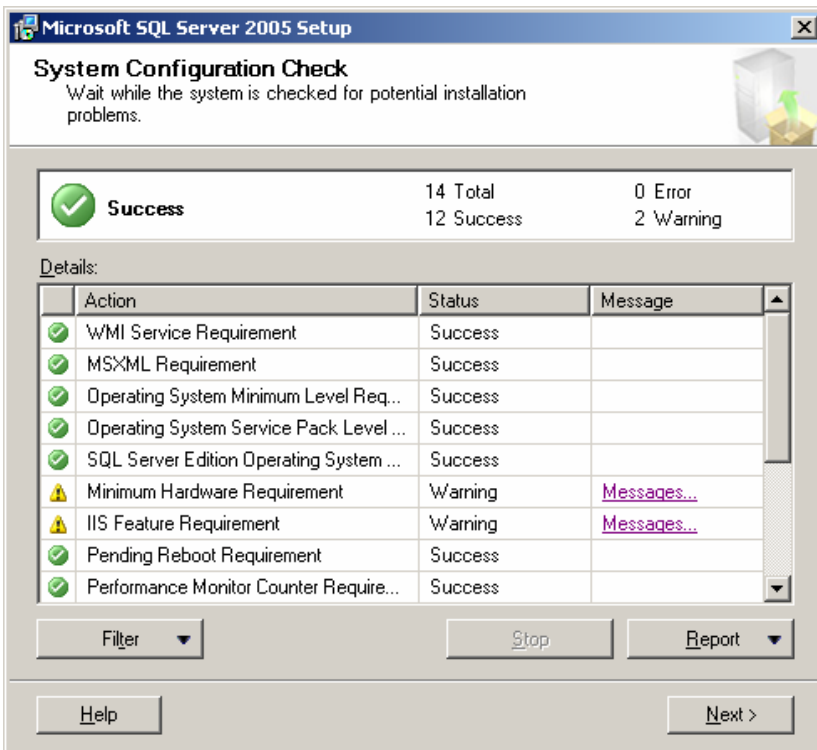
The Installing Prerequisites window is opened, listing all SQL Server components that are required prior to the installation.



3. Click **Install** to install the listed components and continue with the server installation.

The Installation Wizard for SQL Server 2005 is opened. It executes automatically a system check to check if all requirements for the SQL Server 2005 are met.

The result of the system configuration check is displayed in the System Configuration Check window.

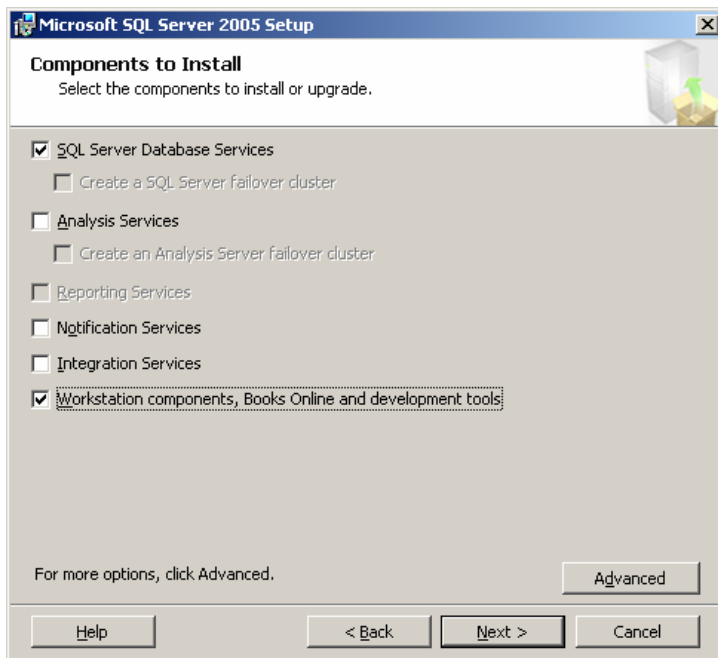


If the system identifies problems a warning or an error message will be issued. Additional information can be found by clicking on the link in the Message column. Possible problems should be solved before continuing with the installation to avoid future problems.

Note: The warning for IIS Feature Requirement can be ignored as Agile e6 does not require any integrated SQL Server Web features.

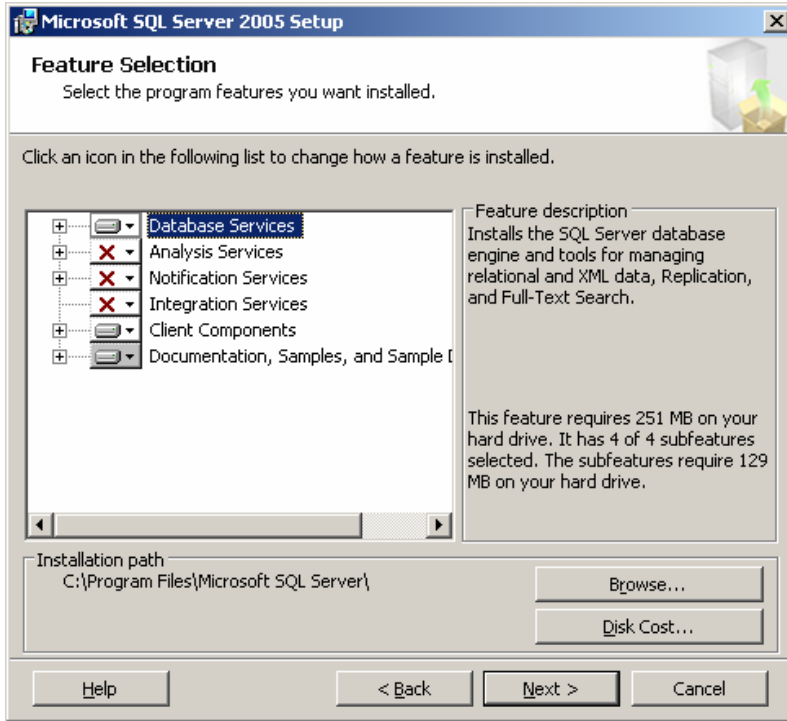
4. When the system check was successful, click **Next >** to continue with the installation.
5. Enter your name, company name and product key and click **Next >**.

In the next window, the components to be installed with SQL Server 2005 can be selected.

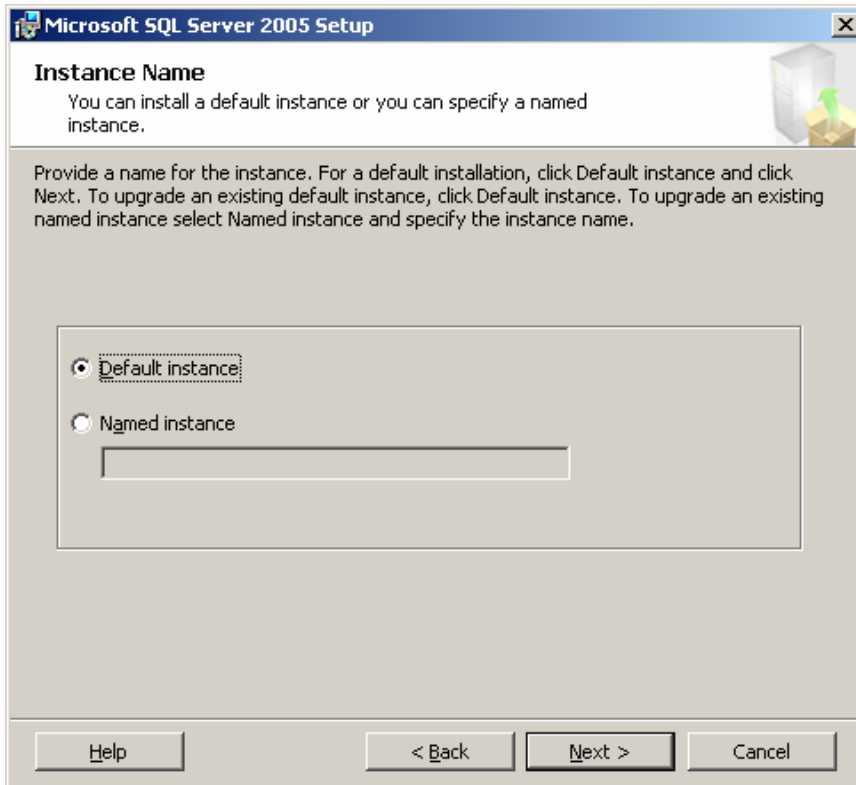


6. Select at least the following components:
 - SQL Server Database Services
 - Workstation components, Books Online and development tools

To adapt the standard installation path and select additional features, click on the **Advanced** button. The following window is opened:

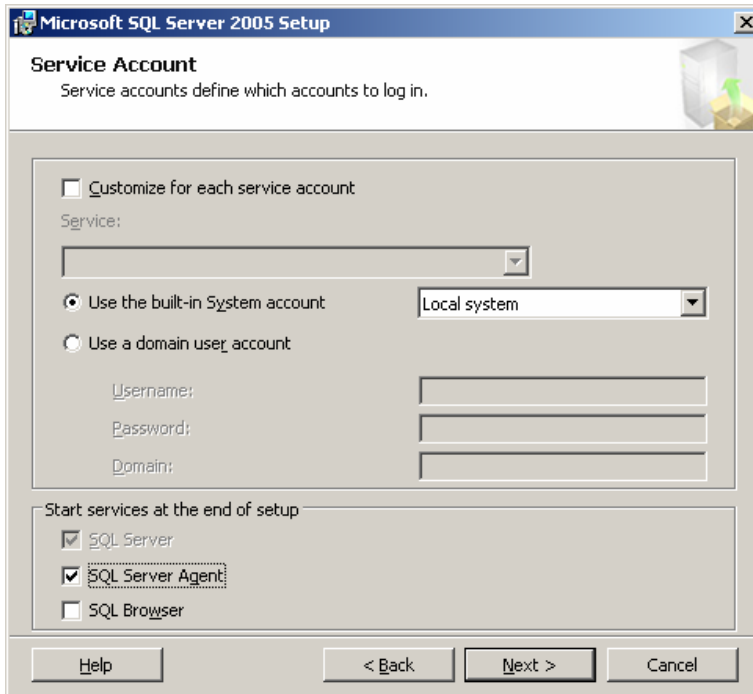


7. Click Next > to install an instance.



8. Select Default instance and click Next>.

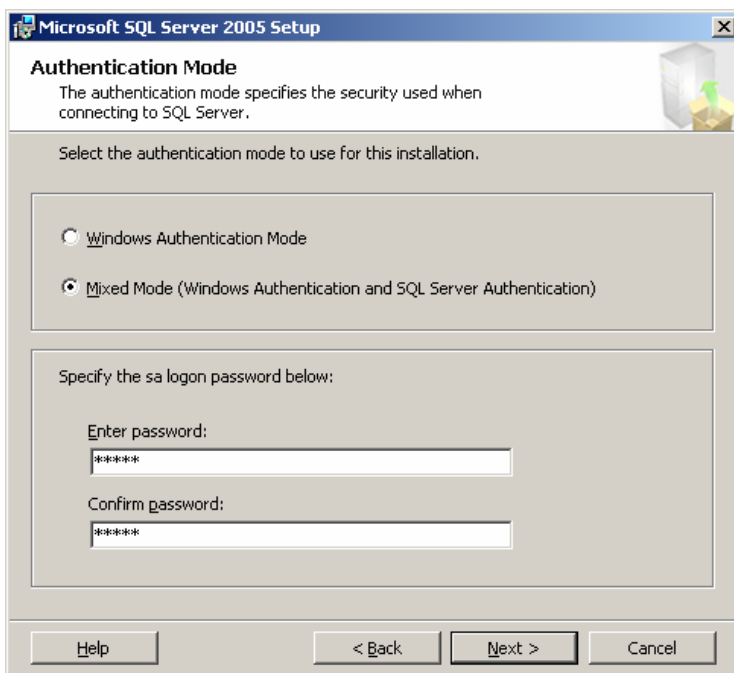
Service account information is entered in the Service Account window, and optional services that start after the installation can be selected.



Please activate the SQL Server Agent option.

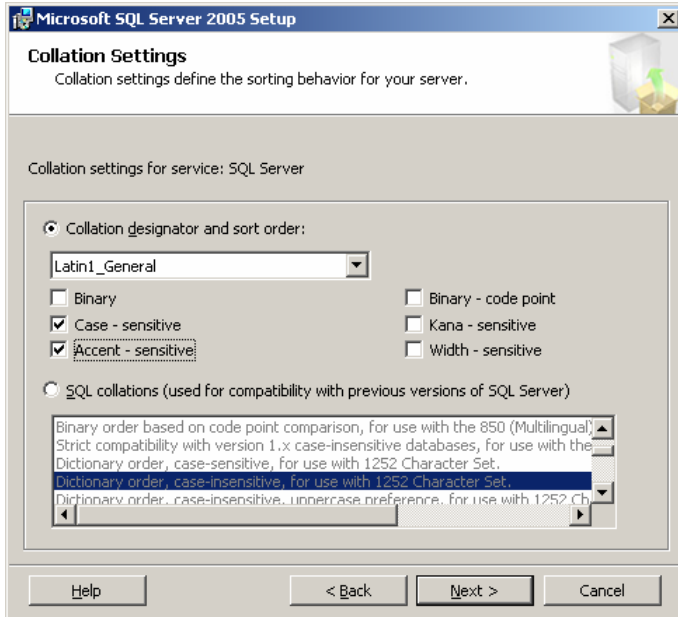
9. For a standard installation, select Use the built-in System account option and click Next>.

In the Authentication Mode window the security that is used when connecting to the SQL server is defined.



10. Select the **Mixed Mode** authentication option for the Agile e6 Application server and enter a DBA user sa password for the SQL Server Authentication. Click **Next >**.

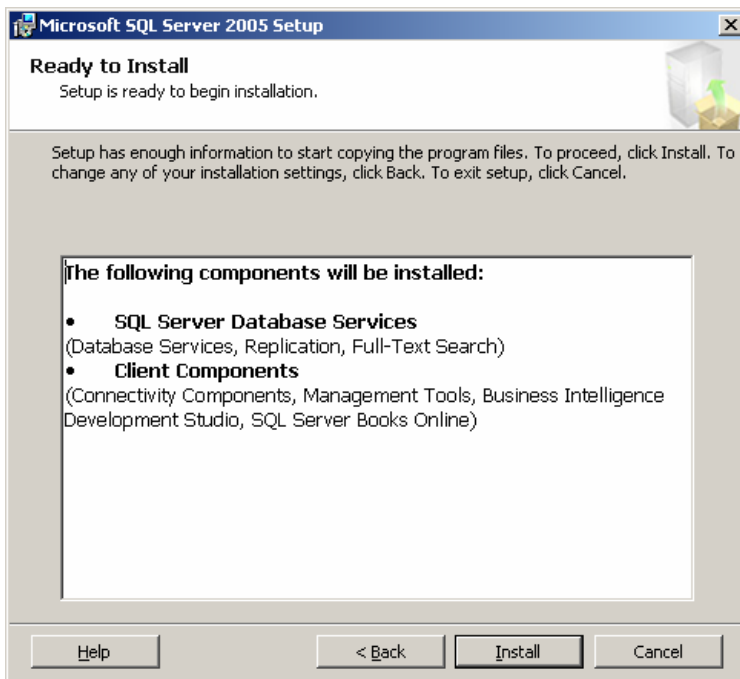
In the Collation Setting window, the different character sets and sort order groups of the SQL Server that can be used in different regions and languages are defined.



Note: Agile e6 SQL Server has to be installed with collation Latin1_General_CS_AS.

11. Select the **Collation designator and sort order** option and Click **Next >**.

The Ready to Install window is opened, listing all components that will be installed.

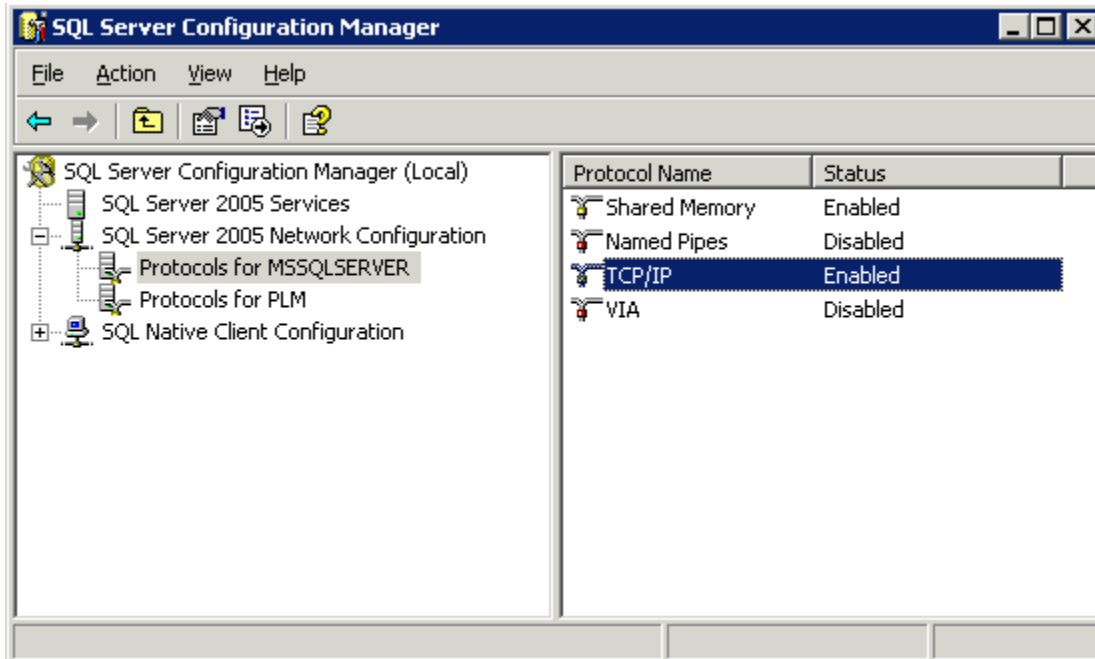


Start the installation by clicking the **Install** button.

The setup progress is displayed.

12. After the installation is finished click **OK**.

13. Start the SQL Server Configuration Manager



14. Check if the TCP/IP protocol is activated.

Chapter 2

Service Pack 1

Install Microsoft SQL Server 2005 Service Pack 1 by using default settings, which will upgrade both the server and client components. The Service Pack can be downloaded at:

German version:

<http://www.microsoft.com/downloads/details.aspx?FamilyID=cb6c71ea-d649-47ff-9176-e7cac58fd4bc&DisplayLang=de>

English version:

<http://www.microsoft.com/downloads/details.aspx?displaylang=en&FamilyID=cb6c71ea-d649-47ff-9176-e7cac58fd4bc>

Chapter 3

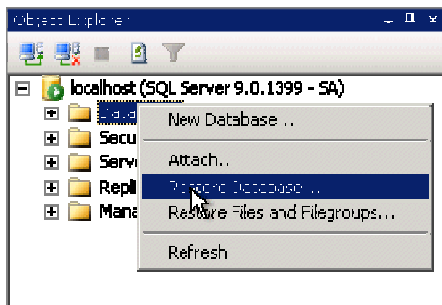
Restore Database in MSSQL 2005

To restore a database in MSSQL 2005 the following steps are required:

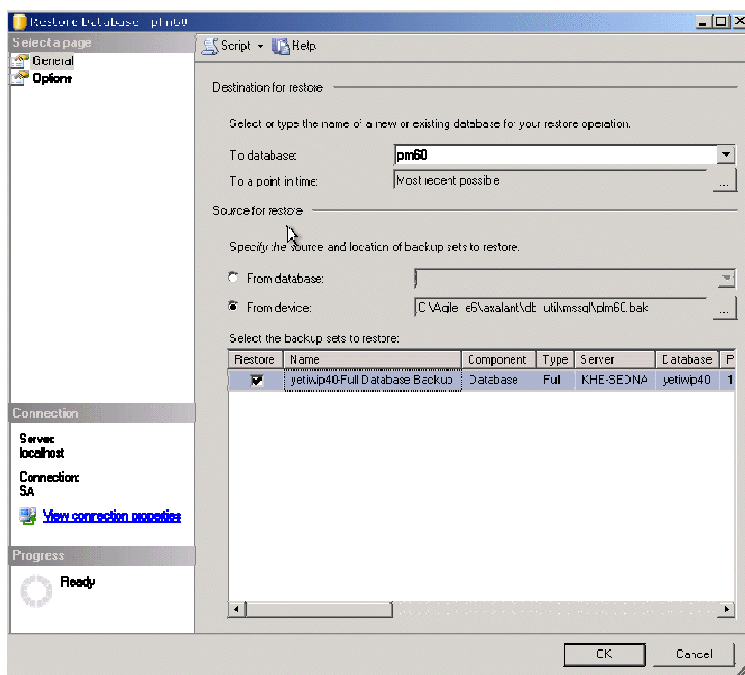
- Restore database
- Set database transaction isolation level
- Create a database user

Restore Database

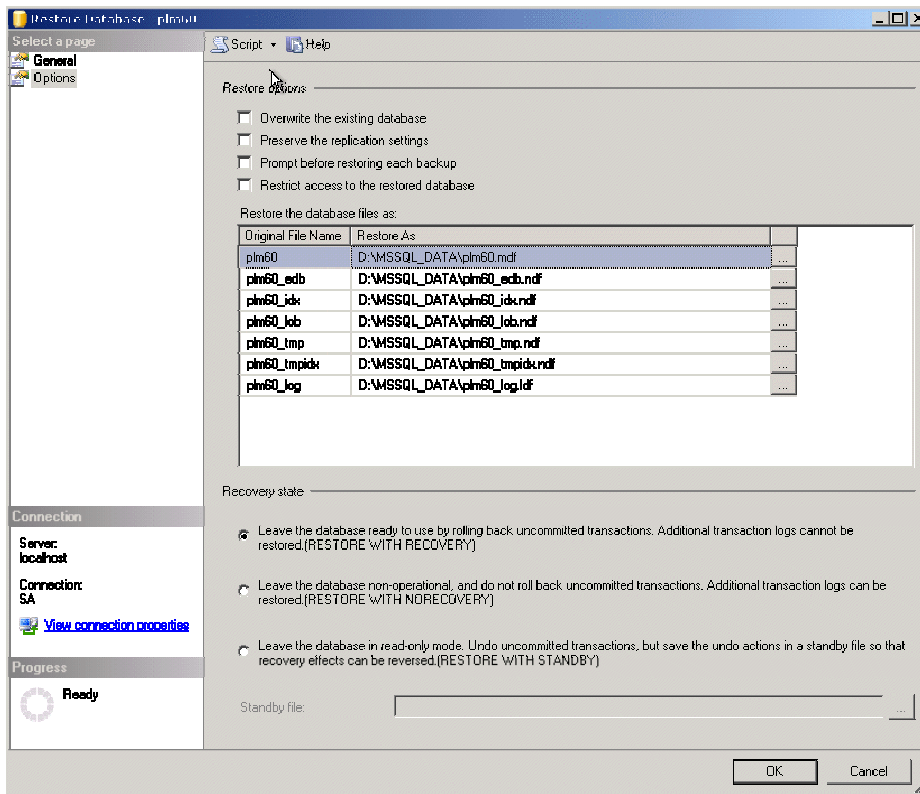
1. Open the Microsoft SQL Server Management Studio from the Start menu.
2. In Microsoft SQL Server Management Studio right-click on the Databases folder and choose Restore Database



3. Add a valid backup file location in the To database field.



- To adapt the restore options click on **Options** in the **Select a page** section.



- Adapt file locations for the database to be created (target directory must exist) in the **Restore the database files as:** section.
- Click **OK**
- Click **OK**.

Run script after_restore.sql

Run the T-SQL script after logging in as a database administrator to create a login. Use the template `axalant\db_util\mssql\after_restore.sql`.