



# Agile e6.0.1

Installation Manual for Agile e6.0.1 Windows Client

## Copyrights and Trademarks

Copyright © 1992-2005 Agile Software Corporation. All rights reserved.

You shall not create any derivative works of this publication nor shall any part of this publication be copied, reproduced, distributed, published, licensed, sold, stored in a retrieval system or transmitted in any form or by any means: electronic, mechanical, photocopying, or otherwise, without the prior written consent of Agile Software Corporation, 6373 San Ignacio Avenue, San Jose, California 95119-1200 U.S.A.; Telephone 408.284.4000, Facsimile 408.284.4002, or <<http://www.agile.com/>>.

The material in this document is for information only and is subject to change without notice. While reasonable efforts have been made in the preparation of this document to ensure its accuracy, Agile Software Corporation assumes no liability resulting from errors or omissions in this document or from the use of the information contained herein. Agile Software Corporation reserves the right to make changes in the product design without reservation and without notification to its users.

Agile e6 is a registered trademark. All other brands or product names are trademarks or registered trademarks of their respective holders.

Java and Solaris are registered trademarks of Sun Corporation.

Microsoft, Microsoft Windows, Microsoft Word, Microsoft Excel, Internet Explorer and SQL Server are registered trademarks of Microsoft Corporation.

Oracle and Oracle10g are registered trademarks of Oracle Corporation.

### **NOTICE OF RESTRICTED RIGHTS:**

The Software is a “commercial item,” as that term is defined at 48 C.F.R. 2.101 (OCT 1995), consisting of “commercial computer software” and “commercial computer software documentation” as such terms are used in 48 C.F.R. 12.212 (SEPT 1995) and when provided to the U. S. Government, is provided (a) for acquisition by or on behalf of civilian agencies, consistent with the policy set forth in 48 C.F.R. 12.212; or (b) for acquisition by or on behalf of units of the Department of Defense, consistent with the policies set forth in 48 C.F.R. 227.7202-1 (JUN 1995) and 227.7202-4 (JUN 1995).

**November 14, 2005**

# CONTENTS

---

<b>Chapter 1 Introduction</b>	<b>1</b>
Where to Go for More Information	1
<b>Chapter 2 Preparing the Installation</b>	<b>2</b>
Requirements	2
Setting the Prerequisites	2
Parallel Installation of Agile e5.1 and Agile e6 clients	2
<b>Chapter 3 Installing the Windows Client</b>	<b>4</b>
Upgrading from the e6.0 Installation	4
Starting the Installation	4
Repair, and Remove Options	11
Repairing the Installation	12
Uninstalling the Windows Client	12



# Chapter 1

## Introduction

This guide describes how to install the Agile e6 Windows Client (also known as the PC Client) and the Agile e6 Java Client on a computer running Microsoft Windows 2003, Windows 2000, or Windows XP.

### Where to Go for More Information

The Agile e6 installation program allows you to install any of the Agile e6 components listed below:

- Client
- Office Suite
- Server
- File Service (FMS)
- Database system: Oracle

This manual describes only the Windows Client and Windows Java Client installation.

Both clients are installed if you select the client during installation.

Please read the *Administration Manual for Agile e6* (PLM601\_Admin.pdf) for more information about how to use the Java Client with WebStart.

After the Client is installed, it must be able to connect to a running Agile e6 Server. For information on installing the Agile e6 Server, refer to one of the following documents, which are provided on the product CD/DVD:

- Installation Manual for Agile e6.0.1 on Windows Server* (PLM601\_WindowsServer.pdf) – to install a PLM Server that runs under Windows and uses an Oracle 10g database system.
- Installation Manual for Agile e6.0.1 on UNIX Server* (PLM601\_UnixServer.pdf) – to install a PLM Server that runs under UNIX and uses an Oracle 10g database system

Consult your Agile e6 administrator or Customer Support representative for information on installing other Agile e6 components and optimizing your system with the components.

**Note:** The Agile e6 installation guides are available in the doc directory on the product DVD. To view Adobe® Portable Document Format (PDF) files, use the Adobe Acrobat Reader® software, which is available at no charge at [www.adobe.com](http://www.adobe.com).

# Chapter 2

## Preparing the Installation

### Requirements

To install and run the Windows Client and Java Client on a separate machine from the Agile e6 Server, you will need:

- ❑ A Pentium class PC running one of the following Microsoft operating systems:
  - Windows XP Professional with Service Pack 2 or higher
  - Windows 2000 Professional with Service Pack 3 or higher
  - Windows Server 2003 Enterprise Edition with Service Pack 1 or higher
- ❑ A Windows display with a resolution of 1024 by 768 pixels or higher
- ❑ 512 MB RAM
- ❑ 160 MB disk space, for the installation directory
- ❑ Java 2 Runtime Environment in the Version 1.4.2 (which will automatically be installed during the installation if there wasn't an useful one installed)
- ❑ Windows .NET Framework version 1.1 (for the Office Suite of the Windows Client)

### Setting the Prerequisites

Before starting the installation, do the following:

1. Open the Windows Control Panel.
2. Click the Advanced tab on the System properties sheet.
3. Set the environment variable TEMP to a temporary directory.
4. The environment variable JAVA\_HOME needs to be set to the path where the Java Runtime Environment is installed.

**Note:** This can be done during the installation of the Agile e6 Software.

5. If you intend to use the Agile e6 Office Suite, verify that the .NET Framework version 1.1 is installed.

You can get it via the Windows Update, where you maybe need to select **Custom Install** instead of **Express Install** after opening the Windows Update Webpage.

### Parallel Installation of Agile e5.1 and Agile e6 clients

To install Agile e5.1 and Agile e6 client parallel on the same machine, it is required to use separate client settings (profiles) for each version. Before installing the e6 client, copy or rename the settings \_Default and \_Large, because the later installation will change these settings. This can be done using the Agile e5.1 (or e6) client setup dialog. After the parallel installation each client version must be started using the corresponding settings.

**Note:** The OfficeSuite feature of Agile e5.1 and Agile e6 cannot be installed parallel on the same machine.

# Chapter 3

## Installing the Windows Client

Agile e6 is a client-server application that uses a relational database as the application and data repository. The instructions in this section describe how to install only the Agile e6 Windows Client.

### Upgrading from the e6.0 Installation

Please refer to the *Upgrade Guide from e6.0 to e6.0.1* (PLM601\_Upgrade.pdf).

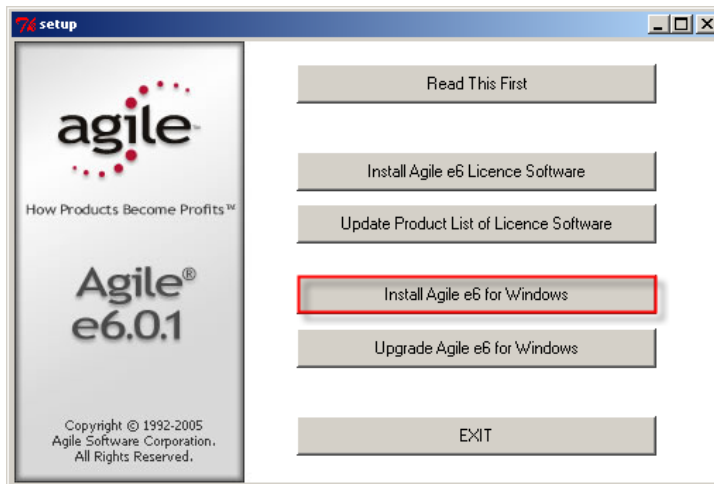
### Starting the Installation

**Note:** Use an account with Windows Administrator privileges to install or uninstall Agile e6.

1. Insert the Agile e6 Installation DVD.

If the CD/DVD autostart feature is enabled on the machine, the Agile e6 main setup window opens automatically.

If the autostart feature is not enabled, open the window manually by double-clicking the file **setup.bat** in the root directory of the DVD.



**Note:** The Windows Installer checks for earlier versions of the Agile e-series installed on your system. If a previously installed version is detected, the Installer presents options for modifying, repairing, or deleting your existing installation. You must delete an existing installation before a new installation can take place.

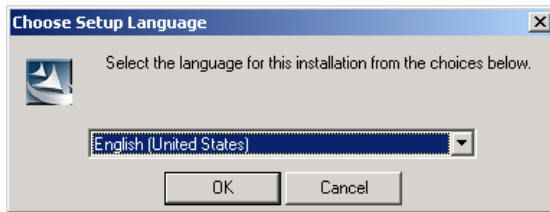
**Note:** For the latest information on the Agile e6 installation, click **Read This First**.

2. Click **Install Agile e6 for Windows**.



**Note:** If a previous version of Agile e-series is installed the, setup will open an upgrade Window. Choose **Yes** if you want to upgrade an existing installation.

This starts a window for selecting the installation language:

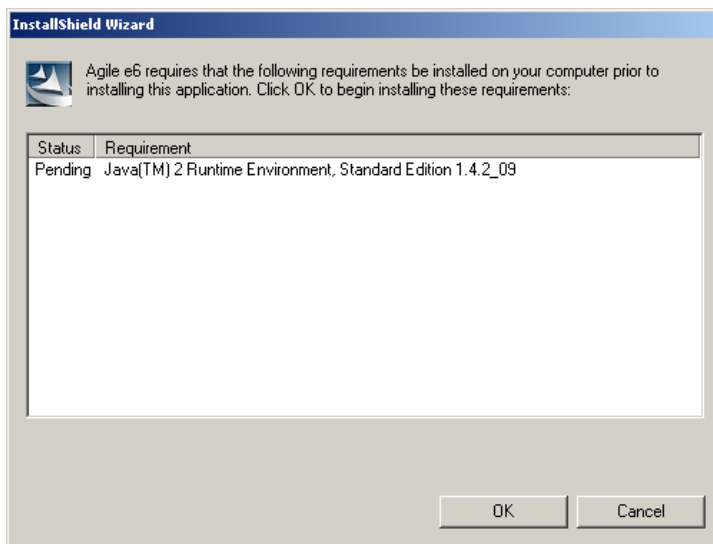


3. Select the language you want to use during the installation of Agile e6 and click **OK** to continue.
4. Checking for an installed Java 2 Runtime Environment

Agile e6 needs an installed Java 2 Runtime Environment for the Java Client.

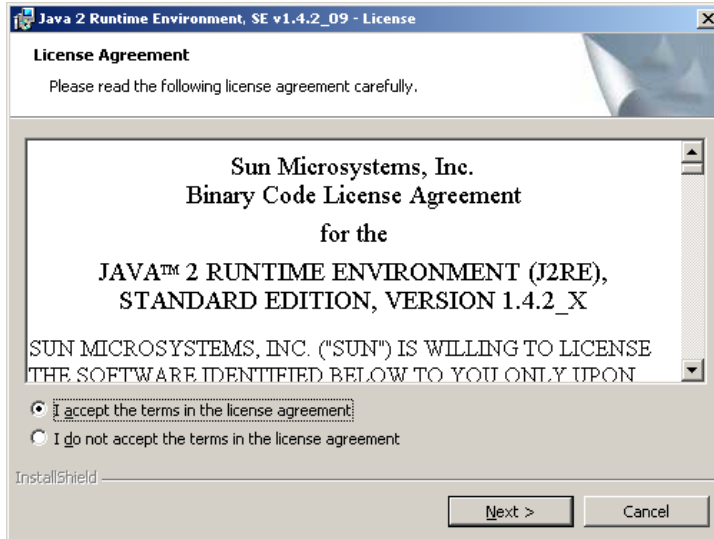
The installation setup performs a check if there is a working Java 2 Runtime installed and opens the following figure if there was not a useful one installed.

Go to Step 9 and continue with the Agile e6 Setup wizard if you already have an installed Java 2 Runtime Environment.

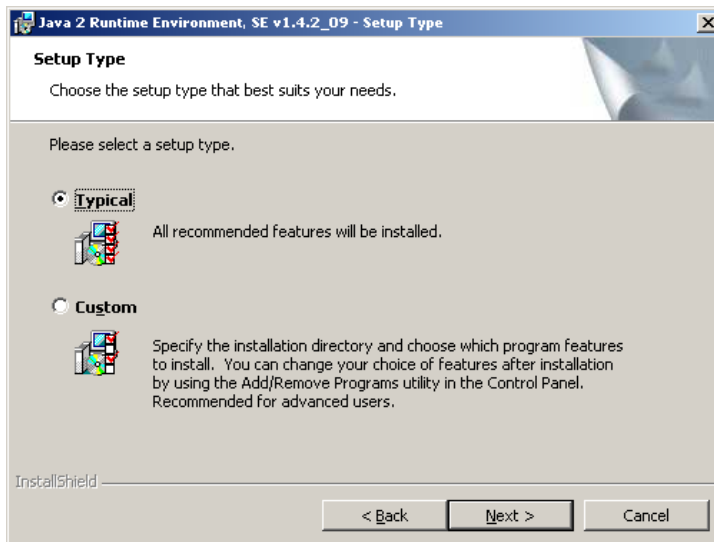


5. Click **OK** to begin installing the Java 2 Runtime Environment.

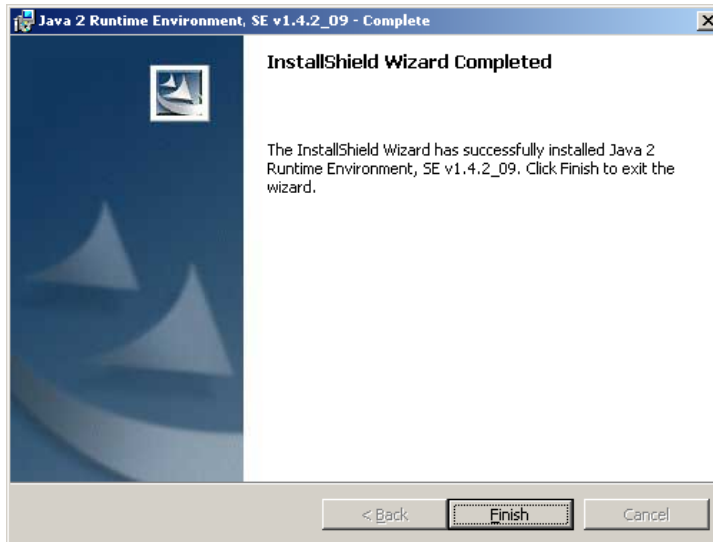
The Sun Java 2 Runtime Environment Installer will be started and the License Agreement window opens.



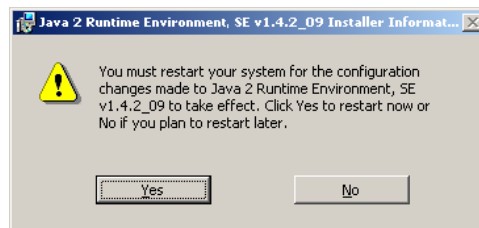
6. After reviewing the license agreement, select **I accept the terms in the license agreement** and click **Next** to continue .
7. Select the setup type for installing the Java 2 Runtime Environment.  
It is recommended to use **Typical**.



8. Click **Next** to start the installation.



**Note:** It may be possible that the JRE Installer wants to reboot the machine after the JRE installation finished.



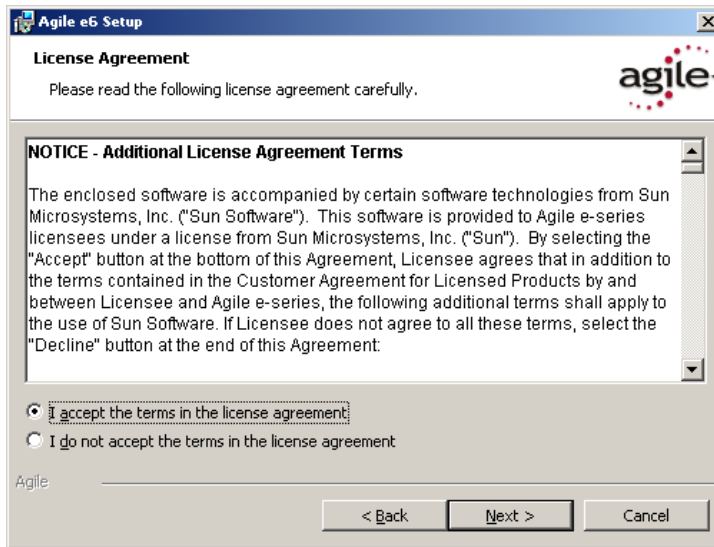
You can restart the Agile e6 Installation after the reboot, which, at that time, will skip the JRE by running start.bat from the DVD.

9. When the installation is completed, click **Finish** to go back to the Agile e6 Setup wizard.

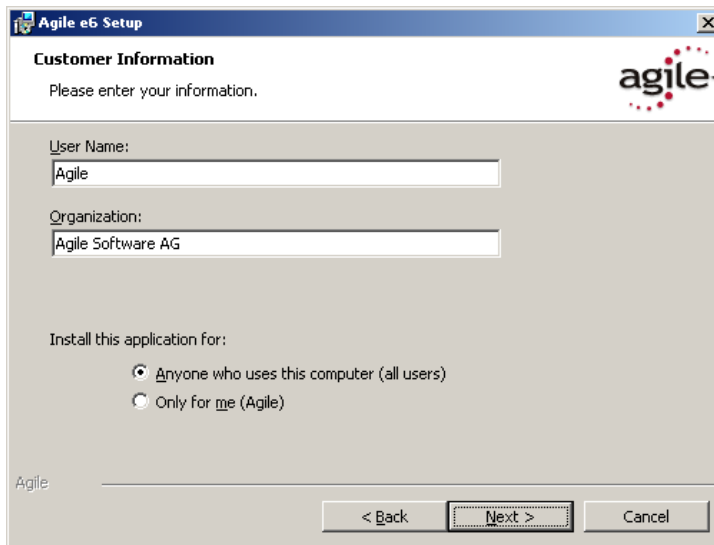


10. Click **Next** to continue.

The License Agreement window is opened.



11. After reviewing the license agreement, select **I accept the terms in the license agreement** and click **Next**.



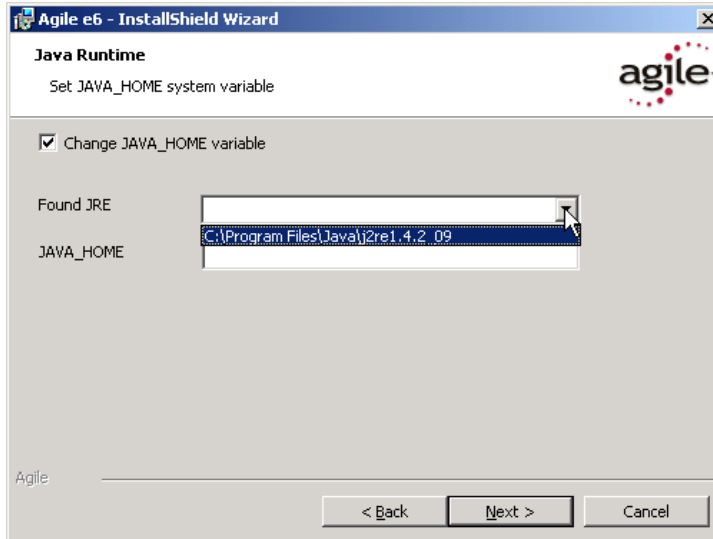
12. Update your user name and the name of your organization if they are incorrect.

13. Select one of the installation options:

- Anyone who uses this computer (all users) — recommended
- Only for me

14. Click **Next** to continue .

The Java Runtime Setup window is opened:

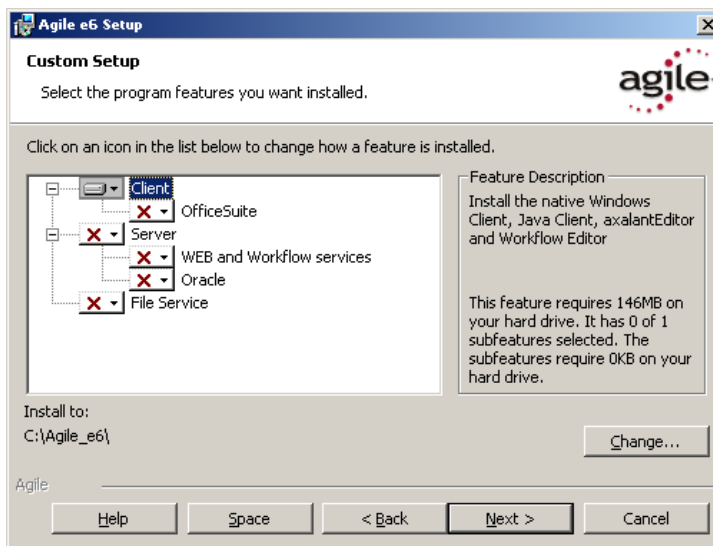


**Note:** The Installer finds all installed Java Runtime Environments and lets you select one which will be used for Agile e6.

**Note:** It is required that JAVA\_HOME is set and pointing to the correct Java Runtime Environment, either by setting it here or in the system environment of your Windows Operating System.

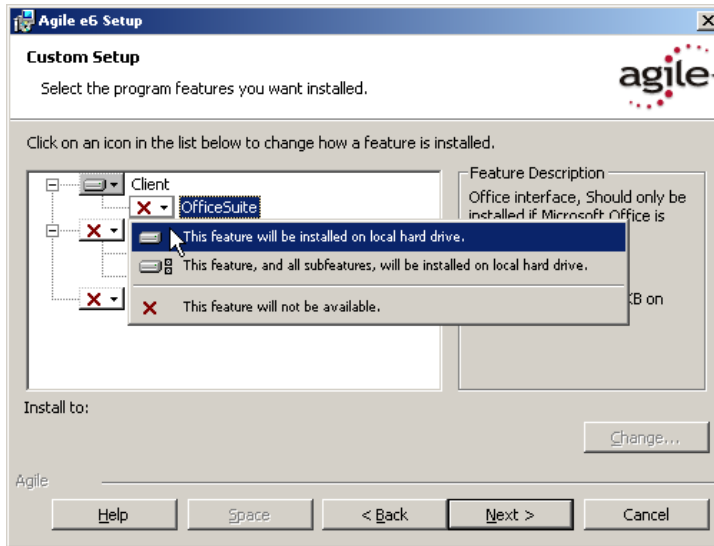
15. Select the Java 2 Runtime Environment Directory and click **Next**.

The Custom Setup window is opened.



The Client program is automatically selected.

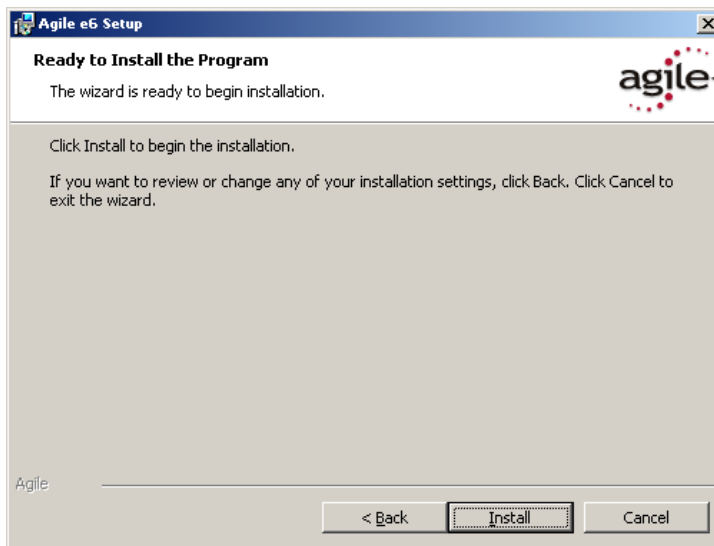
16. If you want to install the OfficeSuite, click **OfficeSuite** and choose **This feature will be installed on local hard drive**.



17. If necessary, change the installation path (for example, C:\Agile\_e6) to the directory where you want to install the Windows Client. If you perform an upgrade you have to select the installation folder of the existing software.

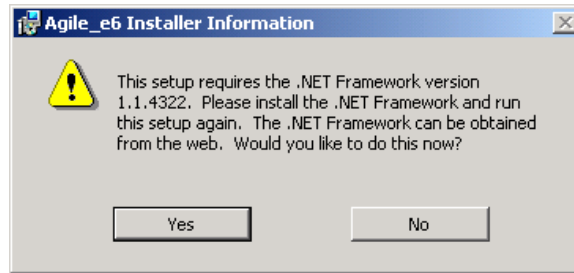
**Note:** The installation path must not contain blank spaces.

18. Click **Next** to continue.



19. Click **Install** to start the installation.

**Note:** The following window will appear if you choose to install the Office Suite, but there is no .NET Framework version 1.1 installed on your system. You have to install it via Windows Update and then start the installation of Agile e6 again.



The following window will open if everything was ok during installation:



**20.** After the installation is complete, click **Finish** to exit the Setup wizard.

**21.** On the main installation window, click **Exit** to close the setup program.

A new entry for Agile e6 appears on the Windows Start menu.

**Note:** The first time you click the **Mask Generator** button in the Windows Client to regenerate a mask, you must be logged into an account that has Windows Administrator privileges.

For further help, refer to the Agile e6 *Read This First* document or the online documentation, which can be found under \axalant\hlp\doc\_ep\ in the directory where you installed Agile e6. To view the Online Help, open the file plm.chm.

## Repair, and Remove Options

If you start the Agile e6 setup program and the Windows installer detects a previously installed version of Agile e6 on your system, it presents options for repairing or removing the existing installation. This section provides an overview of what you can and cannot do to change or remove existing Agile e-series installations.

You can make any of the following changes to an existing installation (**not supported at the moment**):

- Add the PLM Business Services to a server installation

- ❑ Add the File Service to a server installation
- ❑ Modify an installation through the setup program on the Agile e6 product DVD
- ❑ Remove an installation through the setup program on the Agile e6 product DVD

You cannot make any of the following changes to an installation (**not supported at the moment**):

- ❑ Change a client installation to a server installation
- ❑ Add an Oracle or SQL Server installation to an existing server installation
- ❑ Repair an installation through the setup program on the Agile e6 product DVD (Refer to following section for more information.)
- ❑ Modify an installation through the Windows Control Panel (The Modify button is disabled.)

## Repairing the Installation

You can use the Repair function to fix an Agile e6 installation that is not working properly. If the Repair function discovers that the key file for an Agile e6 component is damaged or missing, it restores all parts of the component—such as its registry entries, service entries, shortcut, and files.

**Note:** Although the Repair function is available from the Agile e6 product DVD, you **must** initiate the function from Control Panel to successfully restore all files.

1. Open Add/Remove Programs in the Windows Control Panel.
2. Select Agile e6 from the list of currently installed programs.
3. Click the link **Support information**.
4. In the Support Info box, click the **Repair** button.
5. Insert the Agile e6 Installation DVD. The repair process will take a few minutes. When the process is complete, you will be asked to restart Windows.
6. At the prompt, restart Windows.

## Uninstalling the Windows Client

Agile recommends that you use the Remove option in the Windows Control Panel to uninstall Agile e6.

1. Open Add/Remove Programs in the Windows Control Panel.
2. Select Agile e6 from the list of currently installed programs.
3. Click the **Remove** button.

**Note:** Oracle and the Java 2 Runtime Environment are not removed if you uninstall Agile e6