



Eigner PLM 5.1

Installation Manual for Eigner PLM 5.1 on Windows Server

Copyrights and Trademarks

Copyright © 1995-2003 Agile Software Corporation. All rights reserved.

You shall not create any derivative works of this publication nor shall any part of this publication be copied, reproduced, distributed, published, licensed, sold, stored in a retrieval system or transmitted in any form or by any means: electronic, mechanical, photocopying, or otherwise, without the prior written consent of Agile Software Corporation, 6373 San Ignacio Avenue, San Jose, California 95119-1200 U.S.A.; Telephone 408.284.4000, Facsimile 408.284.4002, or <<http://www.agile.com/>>.

The material in this document is for information only and is subject to change without notice. While reasonable efforts have been made in the preparation of this document to ensure its accuracy, Agile Software Corporation assumes no liability resulting from errors or omissions in this document or from the use of the information contained herein. Agile Software Corporation reserves the right to make changes in the product design without reservation and without notification to its users.

Eigner PLM is a registered trademark. All other brands or product names are trademarks or registered trademarks of their respective holders.

Java and Solaris are registered trademarks of Sun Corporation.

Microsoft, Microsoft Windows, Microsoft Word, Microsoft Excel, Internet Explorer and SQL Server are registered trademarks of Microsoft Corporation.

Oracle and Oracle9iR2 are registered trademarks of Oracle Corporation.

NOTICE OF RESTRICTED RIGHTS:

The Software is a “commercial item,” as that term is defined at 48 C.F.R. 2.101 (OCT 1995), consisting of “commercial computer software” and “commercial computer software documentation” as such terms are used in 48 C.F.R. 12.212 (SEPT 1995) and when provided to the U. S. Government, is provided (a) for acquisition by or on behalf of civilian agencies, consistent with the policy set forth in 48 C.F.R. 12.212; or (b) for acquisition by or on behalf of units of the Department of Defense, consistent with the policies set forth in 48 C.F.R. 227.7202-1 (JUN 1995) and 227.7202-4 (JUN 1995).

April 6, 2004

CONTENTS

Chapter 1 Introduction	1
Where to Go for More Information	1
Chapter 2 Preparing the Installation	2
Hardware and Software Requirements	2
Setting the Prerequisites	3
Chapter 3 Setting up Licensing	4
Obtaining Licenses	4
Installing the License Software	4
Inserting License Keys	9
Chapter 4 Installing Eigner PLM 5.1	12
Starting the Installation	12
Changing the Default Passwords	19
Administrating Environments and Services	20
Hardware and Software Requirements SQL-Server	20
Downloading Files for the PLM Business and Presentation Services	22
About the Modify, Repair, and Remove Options	24
Repairing Your Installation	24
Uninstalling Eigner PLM	25
Install configuration file init/ep.edb:	25

Chapter 1

Introduction

This guide describes how to install Eigner PLM 5.1 for Oracle 9iR2 (9.2.0.4) running under Microsoft Windows 2000/2003 Server. If you want to use Eigner PLM 5.1 in conjunction with Microsoft SQL-Server, please see the SQL-Server section for adapting the installation and configuring the database.

Note: Windows Operating system versions other than Windows 2000/2003 Server are not supported at this time.

Where to Go for More Information

The instructions in this guide assume that you will perform the Eigner PLM installation followed by the Oracle 9iR2 installation. If you plan to use Eigner PLM with an existing Oracle 9iR2 installation, refer to the document *Eigner PLM 5.1 Administration Guide* for instructions on setting up the Eigner PLM environment to work with your existing Oracle databases.

For complete information on installation prerequisites, including required operating system maintenance-level fixes and system patch levels, refer to the document *Eigner PLM 5.1 Prerequisites Guide*.

For information on database preparation and requirements, refer to the document *Installing Oracle 9iR2 for Eigner PLM 5.1 on Windows*.

Note: The Eigner PLM installation guides are available in the `doc` directory on the product CD/DVD. To view Adobe® Portable Document Format (PDF) files, use the Adobe Acrobat Reader® software, which is available at no charge at www.adobe.com.

Chapter 2

Preparing the Installation

This chapter provides an overview of the hardware and software required to install and run Eigner PLM 5.1 with Oracle 9iR2, as well as instructions for setting the installation prerequisites.

Before installing Eigner PLM 5.1, do all of the following:

- Review the hardware and software requirements for your platform.
- Set the necessary installation prerequisites.
- Follow the instructions in the next chapter to set up licensing.

Hardware and Software Requirements

This section describes the minimal hardware and software requirements for performing an initial installation of Eigner PLM in a test environment. For complete information on the requirements for a production environment, refer to *Eigner PLM 5.1 Prerequisites Guide*.

To install and run Eigner PLM 5.1, you'll need, at a minimum:

- Intel Pentium 450 MHz equivalent, running Microsoft Windows 2000 Server with Service Pack 3
- Oracle 9iR2 (9.2.0.4) – installation CD/DVD included in Eigner PLM kit
- Memory:
 - Eigner PLM Server: 256 MB, plus additional 23 MB RAM per concurrent user
 - Database server: 6 MB RAM per connected user, plus 100 MB RAM for database services
- Swap space: Three times the amount of RAM
- Disk space for the installation:
 - Eigner PLM: 400 MB
 - Eigner PLM File Server: 100 MB
 - Oracle 9iR2 Server: 1500 MB
 - Oracle 9iR2 Client: 350 MB
- Disk space for Oracle tablespaces (test):
 - system, temp, undo, redologs, user, tools: 500 MB
 - edb: 100 MB
 - edb_idx: 100 MB
 - edb_lob: 5MB
 - edb_tmp: 5 MB
 - edb_tmpidx: 5MB
- One of the following web browsers (to run the Web Client):

- Internet Explorer 5.5 with Service Pack 2
- Internet Explorer 6.0

Setting the Prerequisites

Before you start the Eigner PLM 5.1 installation, complete the following steps to set the necessary prerequisites:

1. Set the environment variable TEMP to a temporary directory, using System in the Windows Control Panel.
2. If you intend to use the Eigner PLM FMS file management system, verify that the disk drives on which the FMS directories will reside use the NTFS file system.

To determine whether a disk drive uses the NTFS file system, check the General tab on the drive properties sheet. If the *File system* property is not set to NTFS for your drives, consult your system administrator for assistance reformatting them.

Administrators and the Eigner PLM user *edbserv* (which is created during the installation) will require full access rights to the FMS directories.

Chapter 3

Setting up Licensing

To allow users access to PLM functionality, Eigner PLM requires valid licenses. This section describes how to install the license software and insert the required license keys prior to installing Eigner PLM.

Obtaining Licenses

Eigner PLM 5.1 uses FELICS, a license management tool, to handle licenses. To obtain licenses you will need to provide the host ID of the system on which the FELICS license server will be run.

3. To determine the host ID, run the `uchostid.exe` program, which is distributed on the Eigner PLM 5.1 CD/DVD under the following directory:

```
\\licmgr\windows
```

4. Mail the hostid to: vi@agile.com to get the licenses for your installation.

The FELICS License Software has three components:

- ❑ The FELICS License Server, which hosts the licenses for Eigner PLM. You can install the FELICS License Server on any system accessible by the Eigner PLM Server (also known as the axalant Server). It is advantageous to install it on the database machine.
- ❑ The FELICS Agent, which communicates with the FELICS and Eigner PLM Servers to check the validity of licenses for the Eigner clients. The FELICS Agent must be installed on the same machine as the Eigner PLM Server and FileServer.
- ❑ The FELICS Tools, which are utilities for importing and managing license keys. The FELICS Tools should typically be installed on the same machine as the FELICS License Server and on the Administrators PC.

Installing the License Software

Complete the following steps to install FELICS software components.

1. Insert the Eigner PLM 5.1 Installation CD/DVD.

If the autostart feature is enabled on the machine, the Eigner PLM main setup window, shown in the following figure, opens automatically.

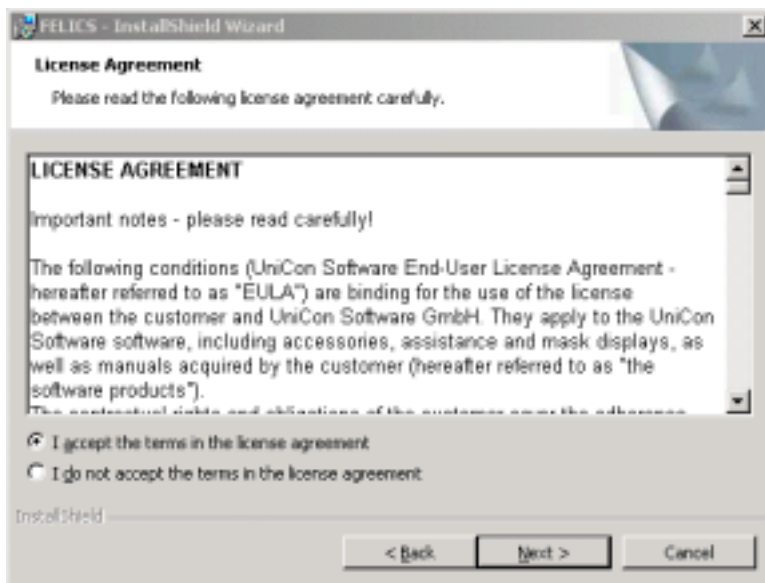


If the CD/DVD autostart feature is not enabled, open the window manually by double-clicking the file **setup.bat** in the root directory of the CD/DVD.

For the latest information on the Eigner PLM 5.1 installation, click **Read This First**.

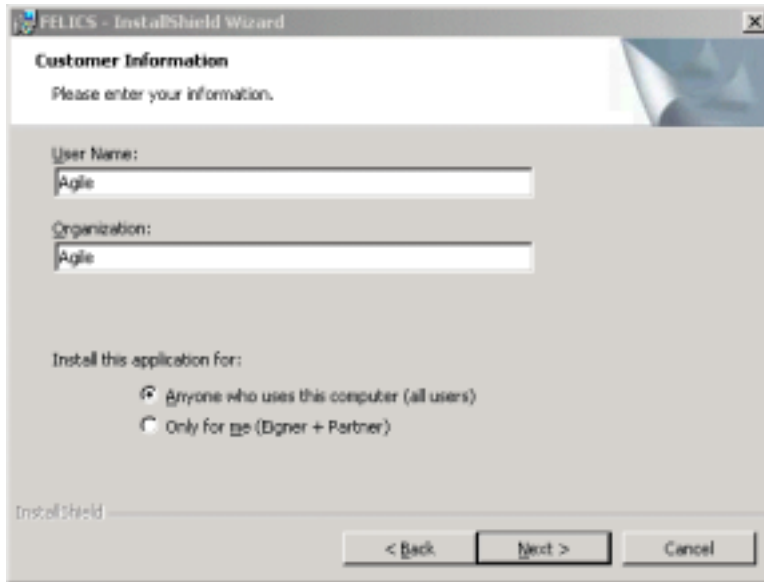
2. Click **Install Eigner License Software**, and then select your preferred language in the **Language Options** dialogue box.

The **License Agreement** window shown in the following figure opens.



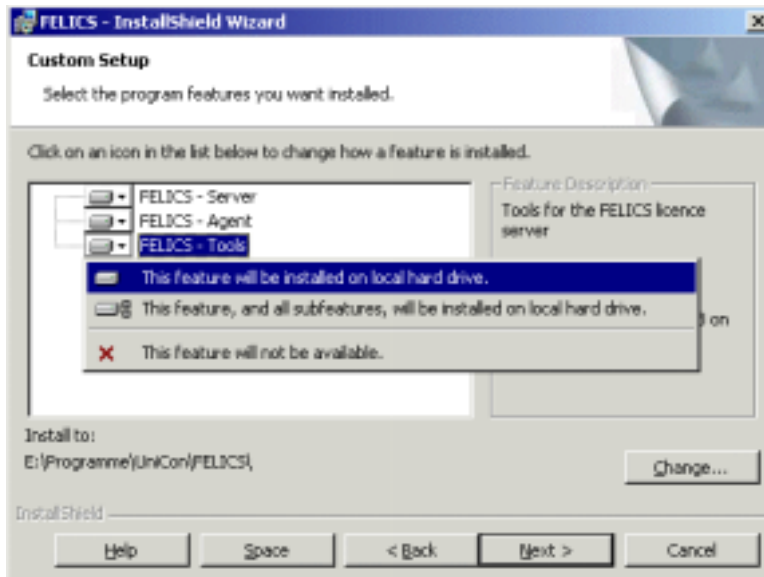
3. After reading the agreement, select **I accept the terms in the license agreement** and then click **Next**.

The **Customer Information** window shown in the following figure opens.



4. Update the information in the **User Name** and **Organization** boxes if it is not correct.
5. Select one of the following installation options and then click **Next**.
 - Anyone who uses this computer (all users) - recommended
 - Only for me

The Custom Setup window shown in the following figure opens.



6. Install the appropriate FELICS components based on your configuration, and click **Change** if you want to change the directory where the FELICS software will be installed.

To include a component in the installation, select it, right-click, and then select **This feature will be installed on local hard drive**. You can include any of the following components.

- FELICS Server

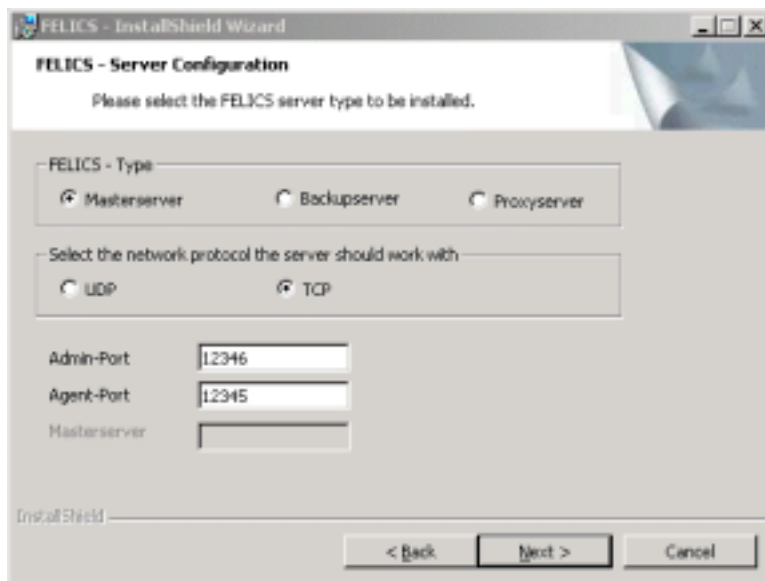
- FELICS Agent
- FELICS Tools

Note: Remember to install the rest of the FELICS components if you are distributing the components to different systems.

You need the FELICS Agent on the Eigner PLM server and the Eigner PLM FileServer machine (if DFM is used). The FELICS License Server is advantageous installed on the database machine. The FELICS Tools should typically be installed on the same machine as the FELICS License Server.

7. Click **Next** to continue.

If you elected to install the FELICS server, the FELICS - Master Information window shown in the following figure opens. (If you did not elect to install the FELICS server, you'll see the Agent Information window shown at step 8.)



For an initial installation, use the default entries:

- FELICS – Master
- TCP
- Admin-Port 12346
- Agent-Port 12345

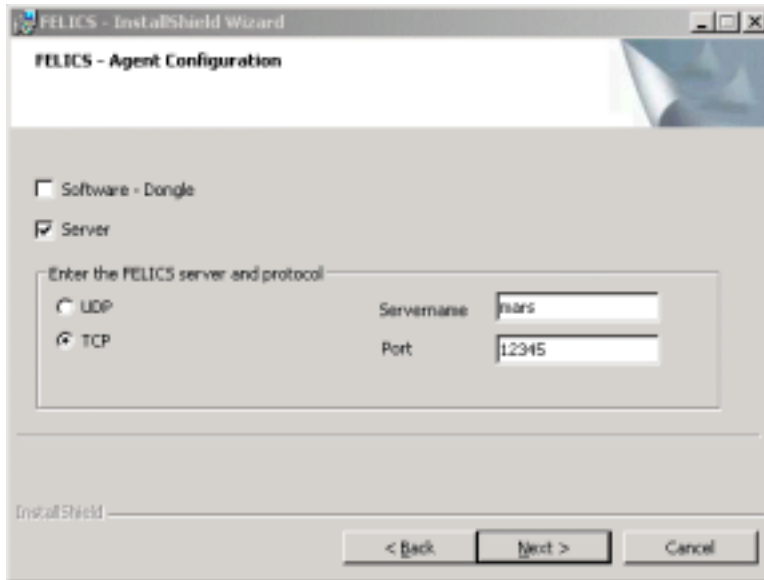
If the default port numbers are already in use, change them to port numbers that are available on your machine. Refer to the document *Eigner PLM 5.1 Administration Guide* for information on determining the active and used ports on your system.

Consult your Eigner Customer Support representative for information about the other options on this window.

Note: If you select FELICS-Backup server or FELICS-Proxy server, you must also enter the name of the FELICS Master server.

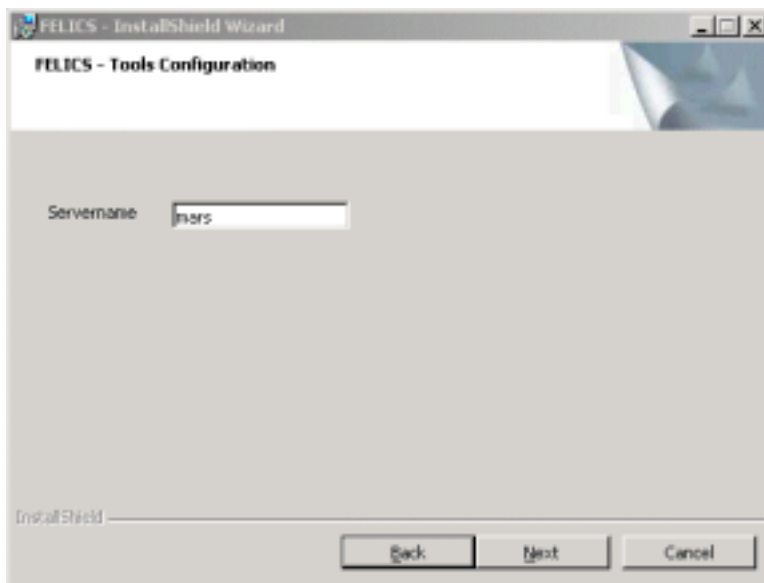
- Click **Next** to continue.

The FELICS Agent Information window shown in the following figure opens.



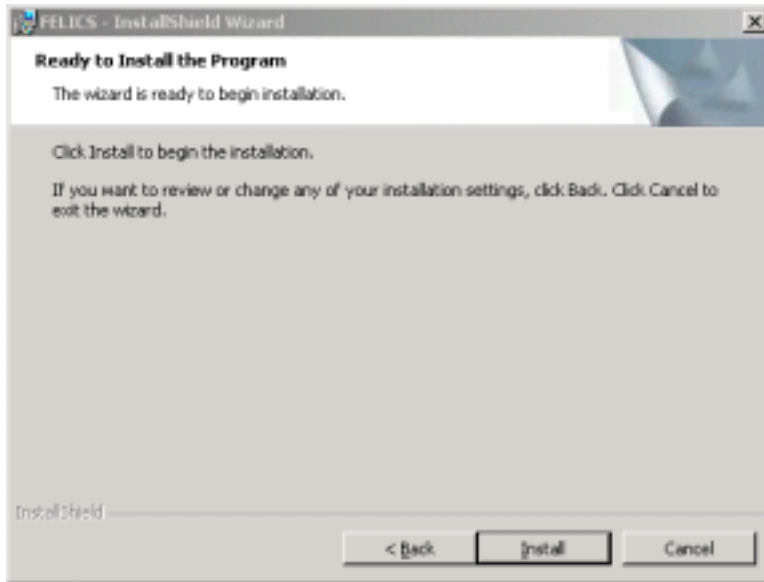
- Select the **server** and TCP options for a typical initial configuration.
- Enter the name of the server where the FELICS License Server is installed (for example, *mars*) and the port number at which it can be reached (for example, the default *12345*).
- Click **Next** to continue.

If you elected to install only the FELICS Tools, the Tools Information window shown in the following figure opens.



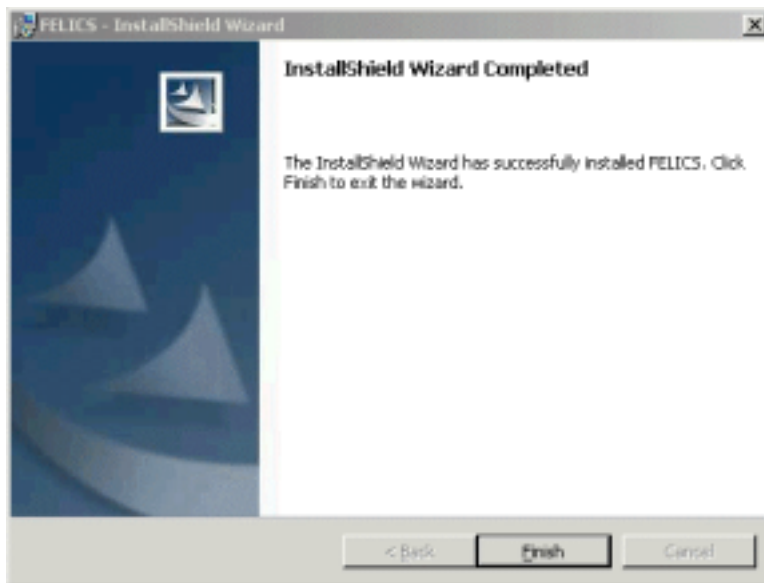
- Enter the server name again, and then click **Next** to continue.

The informational window shown in the following figure opens.



13. Click **Install** to start the installation.

When the installation is complete, the window shown in the following figure opens.



14. Click **Finish** to exit the FELICS installation.

Use the instructions in the following section to insert the licenses needed to run Eigner PLM.

Inserting License Keys

1. Start the FELICS license tool, REMBRAND, from the Windows Start menu.
2. Enter the name and port of the machine on which the FELICS License Server will run.
3. Click **Connect** to connect to the FELICS License Server.

You do not need a password to connect.

The REMBRAND license tool, shown in the following figure, opens.



4. Click **New Key**.
5. Enter the FELICS Server License key first, provided by the Eigner license administrator and then click **OK**.

The informational window shown in the following window opens.



6. Click **OK** to close the window.
7. Press **New Key** again to enter the other licenses provided by the Eigner license administrator.

Be sure to enter the license keys for DataView (usually designated RUN041 and DEV041); otherwise the Eigner PLM clients will not run. It is also useful to fill in the description fields for future reference.

8. Close REMBRAND.

Use the instructions in the next section to install the Eigner PLM software.

Chapter 4

Installing Eigner PLM 5.1

Eigner PLM 5.1 is a client-server application that uses a database as the application and data repository. Eigner PLM also features secure, encrypted file management support known as FMS or the File Service.

The installation procedure allows you to choose which of these options to install on your machine:

- Client
- Server
- File Service (FMS)
- Database system: Oracle

If Microsoft SQL Server is used as database system the installation must be performed manual please see the settings at the end of this manual.

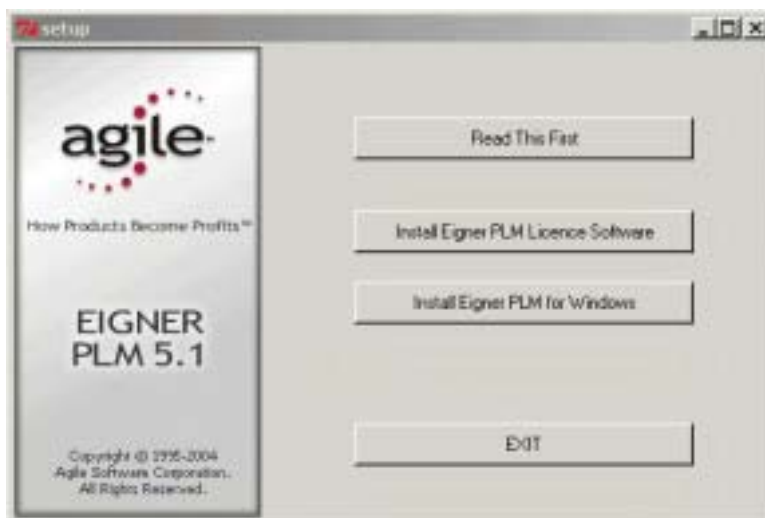
Note: Use an account with Windows Administrator privileges to install and uninstall Eigner PLM.

Starting the Installation

1. Insert the Eigner PLM 5.1 Installation CD/DVD.

If the CD/DVD autostart feature is enabled on the machine, Eigner PLM main setup window, shown in the following figure, opens automatically.

If the autostart feature is not enabled, open the window manually by double-clicking the file **setup.bat** in the root directory of the CD/DVD.



Note: For the latest information on the Eigner PLM 5.1 installation, click Read This First.

2. Click **Install Eigner PLM for Windows**.

This starts the Eigner PLM Setup Wizard, as shown in the following figure.

If a previous version of Eigner PLM is installed, the setup will open an Upgrade Window. Choose yes if you want to upgrade an existing installation. Only perform an upgrade if you have performed a system backup previously.



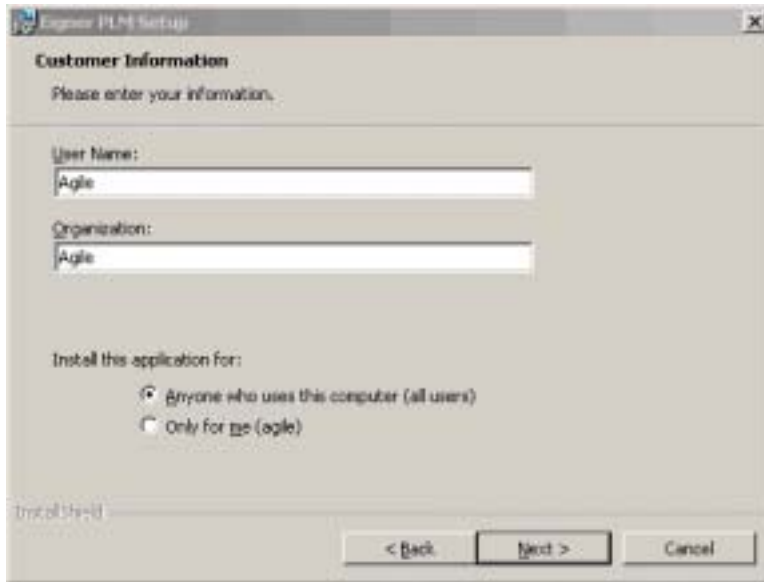
3. Click **Next** to continue.

The License Agreement window shown in the following figure opens.



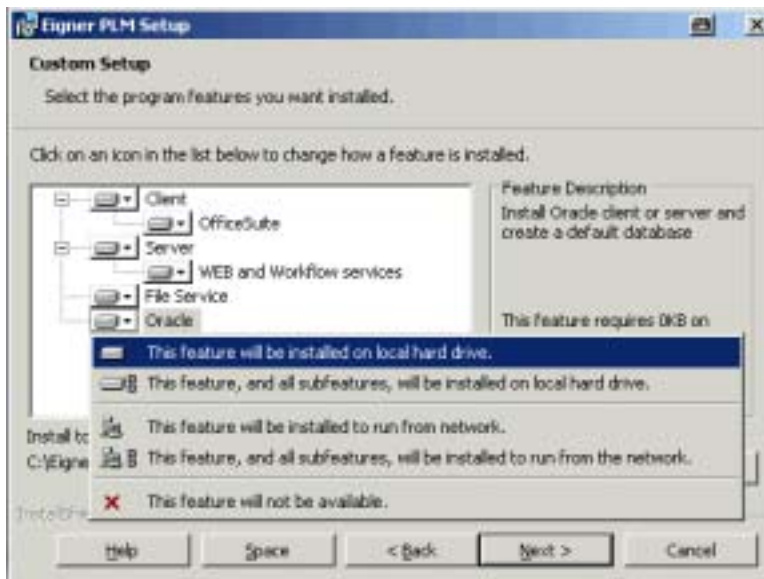
4. After reviewing the license agreement, select **I accept the terms in the license agreement** and then click **Next** to continue.

The Customer Information window shown in the following figure opens.



5. Update your user name and the name of your organization if they are incorrect.
6. Select the installation option:
 - Anyone who uses this computer (all users) - recommended
7. Click **Next** to continue.

The Custom Setup window shown in the following figure opens.



You can use this window to specify which Eigner PLM components to install on the system. You can also choose to install the database software as part of the Eigner PLM installation.

8. Specify the Eigner PLM components you want to install.

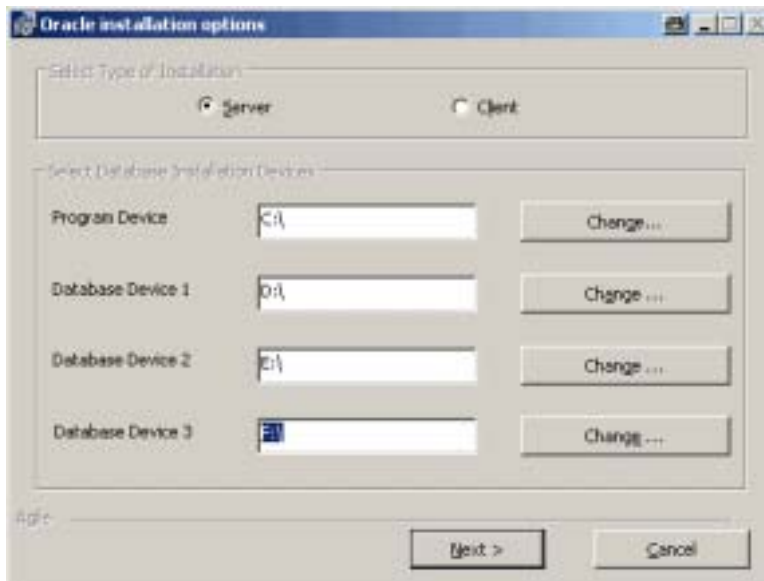
To include a component in the installation, click it and then select **This feature will be installed on local hard drive**. You can include any of the following components:

- Client – the Eigner PLM client software
 - Office Suite – the Eigner PLM Office Suite
 - Server – the Eigner PLM server software
 - WEB and Workflow services – the Eigner PLM Business and Presentation Services
 - File Service (FMS) – Eigner PLM encrypted file management support
 - Oracle – the Oracle 9iR2 database system
9. Click **Change** if you want to change the directory where Eigner PLM will be installed. To perform an upgrade, select the installation folder of the existing software.

IMPORTANT: The installation path **must not** contain blank spaces.

10. Click **Next** to continue.

The Oracle Installation Options window shown in the following figure opens.



11. For **Select Type of Installation**, select one of the following:
- Server – to install a complete Oracle 9iR2 Server, which includes an installation of the Oracle software itself and the creation of a database for Eigner PLM.
 - Client - to install Oracle 9iR2 client software only

Select the Client option only if the database to be used with Eigner PLM is installed on a separate database server. With this option, only the Oracle client software will be installed. The Oracle client software enables the communications between the Eigner PLM server and an existing database server.

12. Specify the locations of the physical devices to be used for the Oracle program and databases, and then click **Next** to continue.

The default folders are set to point to the root directory of drive C (“C:\”), but you can specify different drives. The installation program uses the drive information, but ignores any path information, you specify. It creates the following directories on the specified drives:

- oracle on the drive specified for *Program Device*
- oradata on the drive specified for *Database Device 1*
- oradata on the drive specified for *Database Device 2*
- oradata on the drive specified for *Database Device 3*

If you specify an incorrect path in any of the fields, the installation program uses the correct information previously entered into the field.

The software and tablespaces are installed as follows:

Program device: oracle software, edb, control file 1

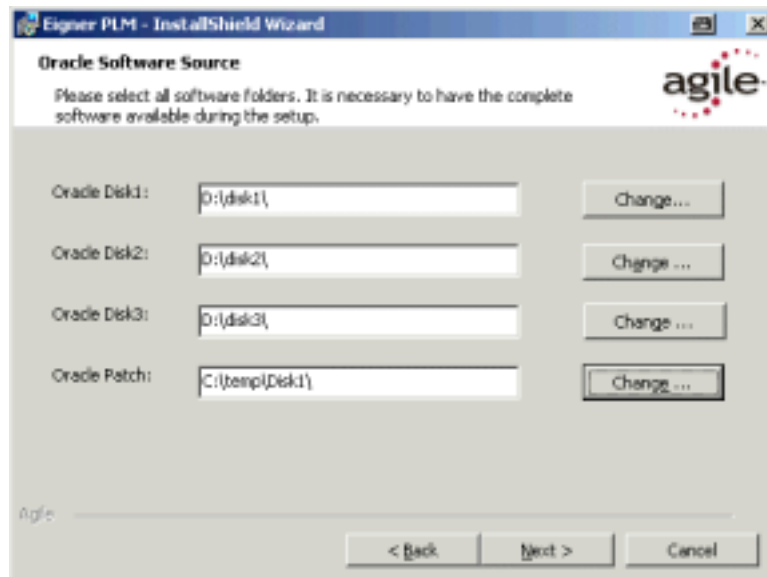
Device1: edb_idx, control file 2

Device2: undo, archive, temp, control file 3

Device3: redolog, system, tools, users

The redologs and the Windows page files must not be stored on the same disk.

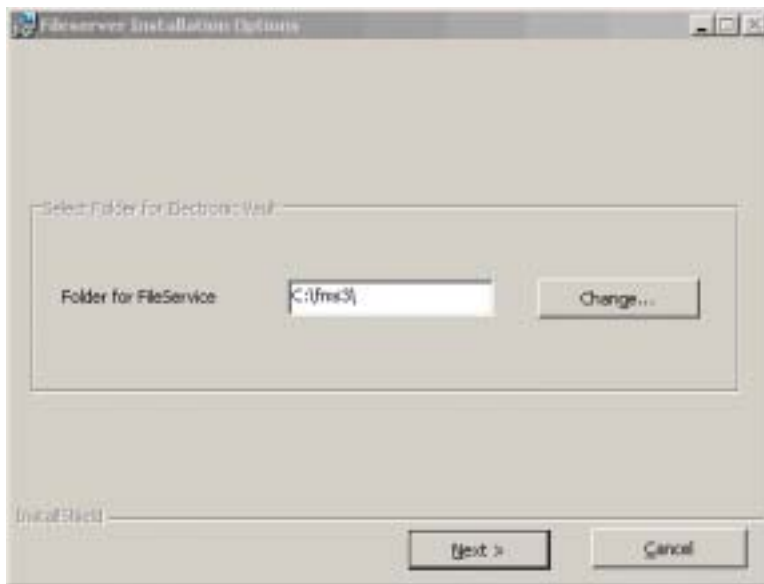
Note: Please select the Oracle software location. Oracle Disk 1-3 is the path to the original Oracle disk folders. If you install from DVD, you find the Oracle disk folders on the install medium. For the Oracle patch you have to extract the zip patch archive onto a local disk (e.g.: 9204_nt_release.zip). A directory Disk1/ is extracted. The setup needs write access to the directory tree. These folders must be available when the Oracle setup starts. You are not asked later to insert any disk. If the setup cannot find parts of the software the installation will fail.





13. Select your preferred database size for your oracle server installation.

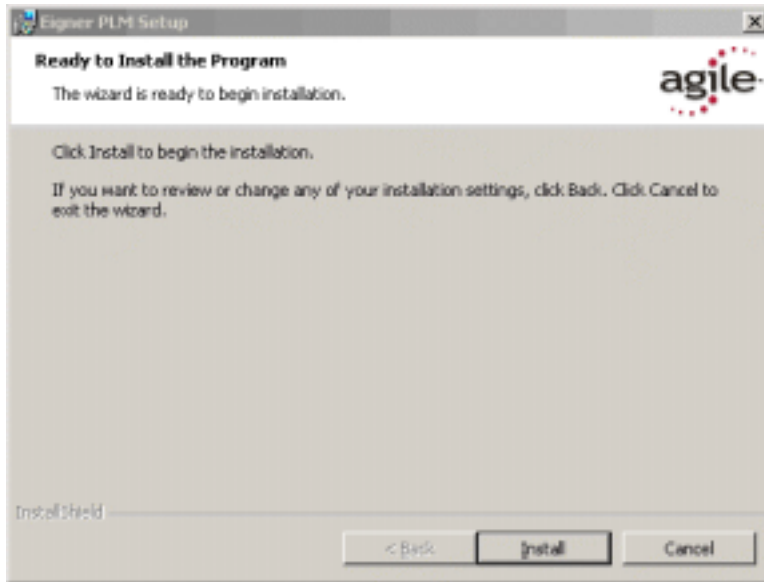
If you chose to install the File Service, the Eigner PLM 5.1 Fileserver Installation Options window, shown in the following window, opens.



14. Enter the correct installation path for the Eigner PLM 5.1 File Service and then click **Next** to continue. If you perform an upgrade, select the existing FileServer folder.

A secure, encrypted file management system will be installed to the folder you specify.

The informational window shown in the following figure opens.



15. Click **Install** to start the Eigner PLM installation.

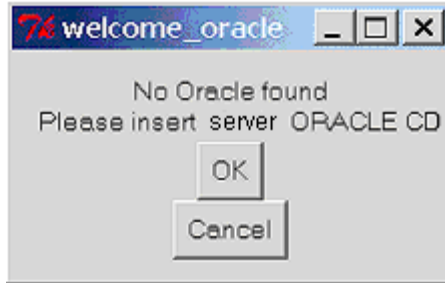
When the installation is complete, the informational window shown in the following figure opens.



16. Click **Finish** to exit the Setup Wizard.

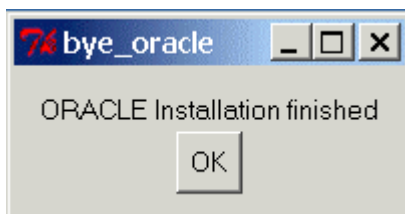
If you selected **Oracle** in the Custom Setup window, the Oracle installation is started automatically, followed by the import of the Eigner PLM database dump.

If the Oracle CD/DVD is not found, you'll see the message shown in the following figure.



1. Insert the Oracle 9iR2 Server DVD or provide the Oracle software under the defined paths

IMPORTANT: Wait until the following message appears on your screen before proceeding to the next step. The installation process should take approximately 30 to 60 minutes. The actual time will depend on the speed of your machine.



2. Click **OK** to complete the installation.
3. If the Eigner PLM main setup window is open, close it by clicking the Close button in the upper right corner.
4. If the Oracle installation fails, check the log files for possible errors (OraInstWin.pdf section Install Errors).
5. You can restart the Oracle installation, if you first deinstall Oracle (OraInstWin.pdf section Deinstall Oracle) and afterwards start the install script.

```
cd c:\EignerPLM
axalant\cmd\oracleinstall.cmd
```

The install information is retrieved from the configuration file `init\ep.edb` (see description at the end of the document).

A new entry for Eigner PLM 5.1 appears on the Windows Start menu.

To test the Eigner PLM installation, start the Eigner PLM 5.1 Windows Client. For a new installation, the default entries in the Startup window should be acceptable. The password for the default user, *DEMOEP*, is *DEMOEP*.

IMPORTANT: The first time you click the Mask Generator button in the Windows Client to regenerate a mask, you must be logged into an account that has Windows Administrator privileges.

Changing the Default Passwords

During the installation process, the system users *axalantrt* and *edbserv* are created for Eigner PLM. For security reasons you should change the default password (`4eigner:plm`) for these users and adjust their properties so the passwords will never expire.

1. Open the Windows Control Panel and use the Users and Passwords utility to change the default password for *axalantrt* and *edbserv*.

Note: When you change these passwords, you must also update the passwords of the following dependent services accordingly:

- EignerPLMAdmin
- EignerPLMDaemon
- EignerPLMFileserver
- EignerPLMJavaDaemon

These services are accessible from Administrative Tools in the Windows Control Panel, under Services. To change the password for a service, click the Log On tab on its properties sheet.

2. **IMPORTANT:** Reboot your machine.

Administrating Environments and Services

Follow the steps below to administrate your Eigner PLM environments and Web Presentation Service environments. For more information, refer to the document *Eigner PLM Administration Guide*.

1. Open a web browser and enter the following URL:

`http://localhost:8017/`

In the URL, *localhost* is the server name of the machine on which Eigner PLM was installed.

2. Click **Administrate Eigner PLM** (User: plm, Password: plm50) to create or modify PLM environments.
3. Click **Administrate Web Presentation Service** to configure and start Eigner PLM WEB and Workflow services.

For further help, refer to the Eigner PLM 5.1 *Read This First* document or the online documentation, which can be found under `\axalant\hlp\doc_ep\` in the directory where you installed Eigner PLM. To view the online help, open the file `plm.chm`.

Hardware and Software Requirements SQL-Server

This section describes the minimal hardware and software requirements for performing an initial installation of PLM in a small test environment. For complete information on the requirements for a production environment, refer to *Eigner PLM 5.1 Prerequisites Guide*.

To install and run PLM 5.1 you'll need, at a minimum:

- Intel Pentium III 450 MHz equivalent, running Microsoft Windows 2000 Server with Service Pack 3
- Microsoft SQL Server 2000 – SP3a
- Memory:
 - PLM Server: 256 MB, plus additional 20 MB RAM per concurrent user

- Database server: 100 MB RAM for database services
- ❑ Swap space: Three times the amount of RAM
- ❑ Disk space for the installation:
 - PLM: 400 MB
 - PLM File Server: 100 MB
 - SQL Server: 270 MB
 - SQL Server Client: 70 MB
 - %TEMP%: 150 MB
- ❑ Disk space for one PLM database in the SQL Server:
 - Master device and log: 20 MB
 - Device: edb: 20 MB
 - Index device: edb_idx: 20 MB
 - Lob device: edb_lob: 5 MB
 - Temporary tables device: edb_tmp: 5 MB
 - Temporary table indexes device: edb_tmpidx: 5 MB
- ❑ One of the following web browsers (to run the Web Client):
 - Internet Explorer 5.5 with Service Pack 2
 - Internet Explorer 6.0

IMPORTANT: Server parameters for the manual installation of SQL Server 2000 must be as shown in the following table.

Parameter	Value
Collation designator	Latin1_General
Sort order	Case sensitive, accent sensitive
After the server is installed, run the Query Analyzer to execute the following: exec sp_configure 'nested triggers'	'config_value' and 'run_value' for the output must be '0'. If they differ, run: exec sp_configure 'nested triggers', 0 reconfigure

Check the settings

1. Open Enterprisemanager
2. Select instance
3. Right mouse button and chose properties:
 - Server sort order: Latin1_General_CS_AS
 - Reduce maximum memory to an appropriate value (server should not swap). Physical memory must be available (see task manager).

- Authentication: SQL-Server and Windows

Eigner PLM connect the SQL-Server database via TCP/IP. The protocol must be available in Server and Client network configuration (see MSSQL-Server shortcuts).

If you want to create a new SQL-Server database with the admin server, you have to set the parameters AxalantInstDbDev2 – AxalantInstDbDev4 in the init/ep.edb file:

..

AxalantInstDbDev2=D:\

AxalantInstDbDev3=E:\

AxalantInstDbDev4=F:\

..

The backslash at the end is necessary to define the root directory of the drive. The database files are stored in folder MSSQL\Data of each drive. See the section *Install configuration file*.

It is possible to connect remote folders from the database server to your PLM Server machine. Do not forget setting the write access rights for axalantrt, who runs the Admin Service.

Type of SQL-Server Installation:

- Server – Install a complete SQL Server 2000 with SP3.
- Client – to install SQL Server client software only
- Select the Client option only if the database to be used with PLM is installed on a separate database server. With this option, only the SQL Server client software will be installed. The SQL Server client software enables communications between the PLM server and an existing database server.

Downloading Files for the PLM Business and Presentation Services

If you selected the *Web and Workflow services* installation option to install the PLM Business and Presentation Services, you'll need to download and install the Microsoft SQL Server 2000 driver for JDBC. This version of the JDBC driver is required by the PLM Business and Presentation Services.

You will need to download the JDBC driver and accept the license agreement only once, even if you have multiple PLM Server installations. After you have installed the driver, you can just copy .jar files created during the installation to other machines that host a PLM Server. You will not need to install the driver on each machine.

Until you have completed the following steps, new and existing PLM environments for which the PLM Business and Presentation Services are enabled will not work.

1. Open the following page in your web browser:

<http://www.microsoft.com/sql/downloads/2000/sp3.asp>

2. Select the appropriate language version for your operating system.
3. When prompted, save the executable file `setup.exe` to your local server.
4. Run the downloaded `setup.exe` to install the JDBC files in the default installation directory (c:\Program Files\) or to a directory you specify.

This creates the following files in the `lib` folder: `msbase.jar`, `mssqlserver.jar`, and `msutil.jar`.

- Copy the `.jar` files from the `lib` folder to the directory `<InstallDir>\ext\bin\java` for each of your PLM Server installations.

For `<InstallDir>`, substitute the name of the directory where PLM is installed.

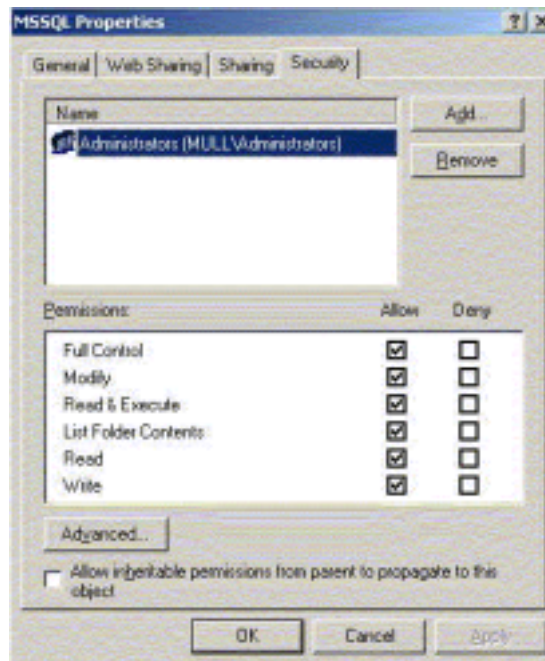
For example, if you used the default installation for the JDBC driver and you installed PLM to `C:\EignerPLM`, your Command Prompt window will look similar to the following figure when you copy the `.jar` files.

```
cd c:\program files\Microsoft SQL Server 2000 Driver for JDBC\lib
dir
msbase.jar
mssqlserver.jar
msutil.jar
copy *.jar c:\EignerPLM\ext\bin\java
```

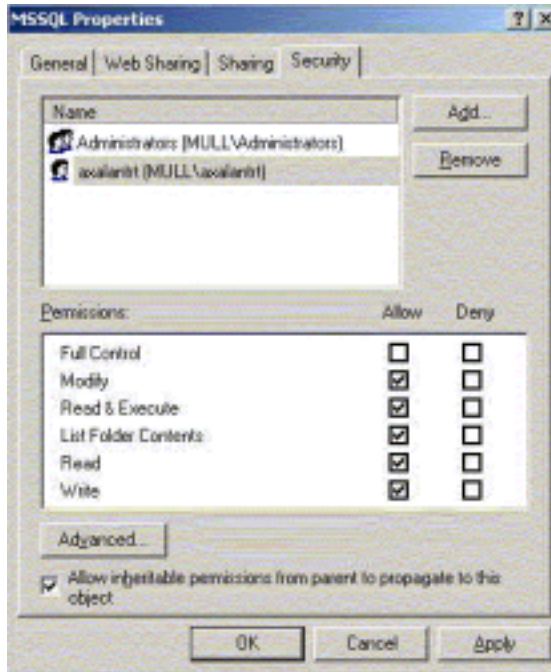
After you copy the `.jar` files, version 2.2 of the JDBC driver will be available automatically for use with the PLM Server installation.

- After installing PLM on Windows 2000 with SQL Server, check access rights on the folders for the database files (Program and Database devices), to ensure that you will be able to create databases for customer environments.

For example, when the installation is complete, right-click the `C:\MSSQL` folder and then select *Properties*. You may see the settings shown in the following figure.



Only members of the **Administrators** local system group have access to the database folder `C:\MSSQL`. To ensure that you can successfully create databases, make sure the **axalantrt** local system or domain account also has access to that folder by changing the account rights as shown in the following figure.



You can also give access rights to the *Authenticated Users* local system or domain group, if doing so will not compromise your company's security policy.

About the Modify, Repair, and Remove Options

If you start the Eigner PLM setup program and the Windows installer detects a previously installed version of Eigner PLM on your system, it presents options for modifying, repairing, or removing the existing installation. This section provides an overview of what you can and cannot do to change or remove existing Eigner PLM 5.1 installations.

You can make any of the following changes to an existing installation:

- Add the PLM Business Services to a server installation
- Add the File Service to a server installation
- Modify an installation through the setup program on the Eigner PLM product CD/DVD
- Remove an installation through the setup program on the Eigner PLM product CD/DVD

You cannot make any of the following changes to an installation:

- Change a client installation to a server installation
- Add an Oracle installation to an existing server installation
- Repair an installation through the setup program on the Eigner PLM product CD/DVD.
- Modify an installation through the Windows Control Panel (The Modify button is disabled.)

Repairing Your Installation

You can use the Repair function to fix an Eigner PLM installation that is not working properly. If the Repair function discovers that the key file for an Eigner PLM component is damaged or

missing, it restores all parts of the component—such as its registry entries, service entries, shortcut, and files.

Note: Although the Repair function is available from the Eigner PLM product CD/DVD, you **must** initiate the function from Control Panel to successfully restore all files.

1. Open Add/Remove Programs in the Windows Control Panel.
2. Select Eigner PLM from the list of currently installed programs.
3. Click the link **support information**.
4. In the Support Info box, click the **Repair** button.
5. Insert the Eigner PLM 5.1 Installation CD/DVD.
6. The repair process will take a few minutes.
7. When the process is complete, restart Windows.

Uninstalling Eigner PLM

Eigner recommends that you use the Remove option in the Windows Control Panel to uninstall Eigner PLM.

1. Open Add/Remove Programs in the Windows Control Panel.
2. Select Eigner PLM from the list of currently installed programs.
3. Click the **Remove** button.

Install configuration file init/ep.edb:

Parameter	Value Oracle	Value SQL-Server
AxalantUseDb	oracle	mssql70
AxalantInstDbDev1	C:\ C:\oracle (software) C:\oradata (edb)	C:\ C:\MSSQL Server software
AxalantInstDbDev2	D:\ D:\oradata edb_idx	D:\ System, log, files in folder D:\MSSQL\Data
AxalantInstDbDev3	E:\ undo, archive, temp	E:\ edb, lob, edb_tmpidx files in folder E:\MSSQL\Data
AxalantInstDbDev4	F:\ F:\oradata redo, system, tools, users	F:\ edb_idx, edb_tmp files in folder F:\MSSQL\Data
AxalantInstDbType	server client	server client

DBSWDisk1	E:\disk1 Sw disk1	-
DBSWDisk2	E:\disk2 Sw disk2	-
DBSWDisk3	E:\disk3 Sw disk3	-
DBSWPatchDir	E:\patch\disk1 Patch extracted	-
DBtemplate	nodb plm_laptop plm_test plm_prod_small plm_prod_medium plm_prod_large plm_prod_huge	-
AxalantInstLang	1031 1033 german/english	1031 1033 german/english