



Eigner PLM 5.1

Installation Manual for Eigner PLM 5.1 UNIX Client

Copyrights and Trademarks

Copyright © 1995-2003 Agile Software Corporation. All rights reserved.

You shall not create any derivative works of this publication nor shall any part of this publication be copied, reproduced, distributed, published, licensed, sold, stored in a retrieval system or transmitted in any form or by any means: electronic, mechanical, photocopying, or otherwise, without the prior written consent of Agile Software Corporation, 6373 San Ignacio Avenue, San Jose, California 95119-1200 U.S.A.; Telephone 408.284.4000, Facsimile 408.284.4002, or <<http://www.agile.com/>>.

The material in this document is for information only and is subject to change without notice. While reasonable efforts have been made in the preparation of this document to ensure its accuracy, Agile Software Corporation assumes no liability resulting from errors or omissions in this document or from the use of the information contained herein. Agile Software Corporation reserves the right to make changes in the product design without reservation and without notification to its users.

Eigner PLM is a registered trademark. All other brands or product names are trademarks or registered trademarks of their respective holders.

Java and Solaris are registered trademarks of Sun Corporation.

Microsoft, Microsoft Windows, Microsoft Word, Microsoft Excel, Internet Explorer and SQL Server are registered trademarks of Microsoft Corporation.

Oracle and Oracle 9iR2 are registered trademarks of Oracle Corporation.

NOTICE OF RESTRICTED RIGHTS:

The Software is a “commercial item,” as that term is defined at 48 C.F.R. 2.101 (OCT 1995), consisting of “commercial computer software” and “commercial computer software documentation” as such terms are used in 48 C.F.R. 12.212 (SEPT 1995) and when provided to the U. S. Government, is provided (a) for acquisition by or on behalf of civilian agencies, consistent with the policy set forth in 48 C.F.R. 12.212; or (b) for acquisition by or on behalf of units of the Department of Defense, consistent with the policies set forth in 48 C.F.R. 227.7202-1 (JUN 1995) and 227.7202-4 (JUN 1995).

April 6, 2004

CONTENTS

Chapter 1 Introduction	1
Where to Go for More Information	1
Preparing the Installation	1
Hardware and Software Requirements	1
Chapter 2 Installing the Eigner PLM 5.1 Client	2
Preparing the Installation	2
Mounting the CD for HP-UX	2
Mounting the CD for Solaris	3
Mounting the CD for IRIX	3
Mounting the CD for AIX	3
Starting the Installation	4
Testing Your Client Installation	5
Troubleshooting	6

Chapter 1

Introduction

This guide describes how to install the Eigner PLM 5.1 UNIX Client.

Where to Go for More Information

For information on installing the Eigner PLM 5.1 UNIX Server, refer to the document *Installing the Eigner PLM 5.1 UNIX Server* (PLM_UnixServer.pdf).

For complete information on installation prerequisites, including required operating system maintenance-level fixes and system patch levels, refer to the document *Eigner PLM 5.1 Prerequisites Guide* (PLM_InstRequirements.pdf).

Note: The Eigner PLM installation guides are available in the `doc` directory on the product CD. To view Adobe® Portable Document Format (PDF) files, use Adobe Acrobat Reader® software, which is available at no charge at www.adobe.com.

Preparing the Installation

Before installing the UNIX Client, do all of the following:

- Review the hardware and software requirements for your platform.
- Follow the instructions in the next chapter to prepare the installation.

Hardware and Software Requirements

This section describes hardware and software requirements for installing and running the Eigner PLM UNIX Client on a separate machine from the Eigner PLM Server. For information on requirements for other Eigner PLM components, refer to the document *Eigner PLM 5.1 Prerequisites Guide* (PLM_InstRequirements.pdf), located in the `doc` directory on the product CD.

To install and run the UNIX Client you'll need:

- A machine running one of the following operating systems:
 - HP UX 11.11
 - Sun Solaris 8/9
 - SGI IRIX 6.5
 - IBM AIX 4.3.3/5.2
- A display with a resolution of 800 by 600 pixels or higher (1024 by 768 or higher recommended)
- Memory: 128 MB RAM
- Disk space: 170 MB, for the installation directory

Note: Operating system versions other than those listed above are not supported at this time.

Chapter 2

Installing the Eigner PLM 5.1 Client

Preparing the Installation

Note: Java Runtime Environment 1.3, which is required, is installed automatically during the installation process.

1. Log in as the installation user.
2. If you are working remote, set the DISPLAY environment variable:

Check whether your environment variable DISPLAY is set to your current working display by calling:

```
echo $DISPLAY
```

If *\$DISPLAY* is unknown to your shell environment, set it as follows:

- If you're running in a c shell (csh):
setenv DISPLAY <YourCurrentDisplay>:0.0

Example: setenv DISPLAY 192.168.0.2:0.0

- If you're running in a k shell (ksh):
set DISPLAY=<YourCurrentDisplay>:0.0
export DISPLAY

3. Create the installation directory in which you want to install the Eigner PLM 5.1 software (for example, /app/plm51).
4. Mount the Eigner PLM 5.1 Installation CD to your file system:

The CD has an ISO 9660 file system with Rock Ridge extension (rrip). If you get filenames such as "filename;1" (HP-UX), use the mount option rrip to get correct filenames. The mount command needs the name of the special file (/dev/*). See /etc/fstab or use the system tools.

The DVD uses UDF file system.

Mounting the CD for HP-UX

1. Establish the file /etc/pfs_fstab:

```
<device_file> <mount_point> <file_type> <translation_method>  
/dev/dsk/c5t2d0 /SD_CDROM pfs-rrip xlat=unix 0 0
```

The file contains only one line, for example:

```
/dev/dsk/ct2d0 /SD_CDROM pfd-rrip xlat=unix 0 0)
```

2. Create the mount point:

```
mkdir /SD_CDROM
```

3. Insert the CD.
4. Enter the following commands:

```
nohup /usr/sbin/pfs_mountd &
```

```
nohup /usr/sbin/pfsd &
```

```
/usr/sbin/pfs_mount /SD_CDROM
```

5. Use the CD.
6. Release the CD by entering:

```
/usr/sbin/pfs_umount /SD_CDROM
```

If you are using the command `df`, the CDROM file system is not attached. Check the existence of the CDROM file system with `cd /SD_CDROM` and `ls`.

The command `pfs_mount` inserts an entry in `/etc/mnttab`. If you do not create a file `/etc/pfs_fstab`, you can add the options to the `pfs_mount` command:

```
pfs_mount -t rrip -x /dev/dsk/... /SD_CDROM
```

```
pfs_mount -t rrip -x /dev/dsk/ct2d0 /SD_CDROM
```

If the processes `pfs_mountd` and `pfsd` are terminated with `kill`, the child processes `pfs_mountd.rpc` and `pfsd.rpc` are stopped by the father process. It is inadvisable to kill the mounted file system processes!

Note: If you make a mistake during the mount procedure, you may need to reboot the machine.

Mounting the CD for Solaris

The operating system should recognize the inserted CD automatically and mount it to `/cdrom` or `/CDROM`. The operating system releases the CD with the command `eject /cdrom`.

If the automatic mount does not run, you'll need to mount the CD by command with root privileges.

Mounting the CD for IRIX

To mount the SGI IRIX installation CD, use:

```
mount -t iso9660 /dev/rdsk/... /cdrom
```

```
mount -t iso9660 /dev/rdsk/dsk0d7vol /cdrom
```

or use:

```
mount_iso9660 /dev/scsi/... /CDROM iso9660 ro
```

```
mount_iso9660 /dev/scsi/sc1d610 /CDROM iso9660 ro
```

Mounting the CD for AIX

To mount the AIX installation CD, use:

```
mount -o ro -v cdrfs /dev/cd0/cdrom
```

or use:

```
smit
```

Starting the Installation

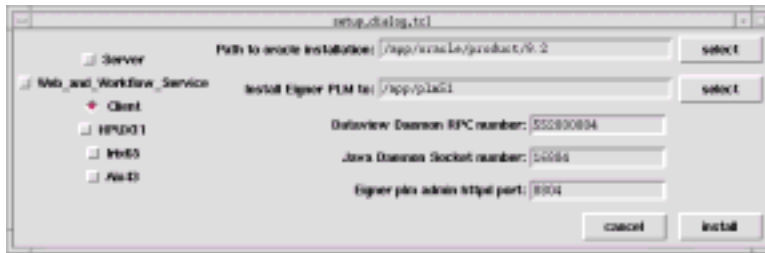
1. To start the installation, change to the setup directory:

```
cd /cdrom/unix/setup
```

2. Enter the following command:

```
./setup
```

This opens the setup window, shown in the following figure, which you can use to set the necessary parameters.



The following parameters refer to the server installation only and are not required for the client installation:

- Path to Oracle installation
- DataView Daemon RPCnumber
- Eigner plm admin httpd port

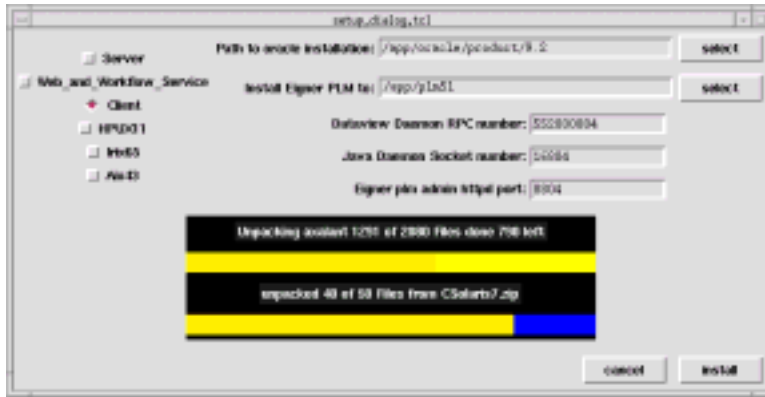
3. Edit the following parameters:

- Installation Type:
- Make sure that the Client button is selected.
- Install Eigner PLM to:
- Enter the path for your Eigner PLM 5.1 installation target if it differs from the default entry.
- Install clients for additional platforms:
- To install clients for additional platforms, select their boxes on the left side of the setup window. Depending on the UNIX platform where you started the installation process, you can select any of the following Eigner PLM clients
 - HPUX11 – HP UNIX
 - Irix65 – SGI IRIX
 - AIX43 – IBM AIX
 - Solaris7 – Sun Solaris

- ❑ The version number in the strings is an information on which OS version, the binaries are compiled. The released version is different, please see the software requirements.

4. Start the installation:

Click the install button. Depending on how many platforms you install, the installation may take from about ten minutes to one hour.



After the installation process has finished you can test the installation by running an Eigner PLM 5.1 client. Refer to the sections on running the UNIX Client, later in this manual.

Testing Your Client Installation

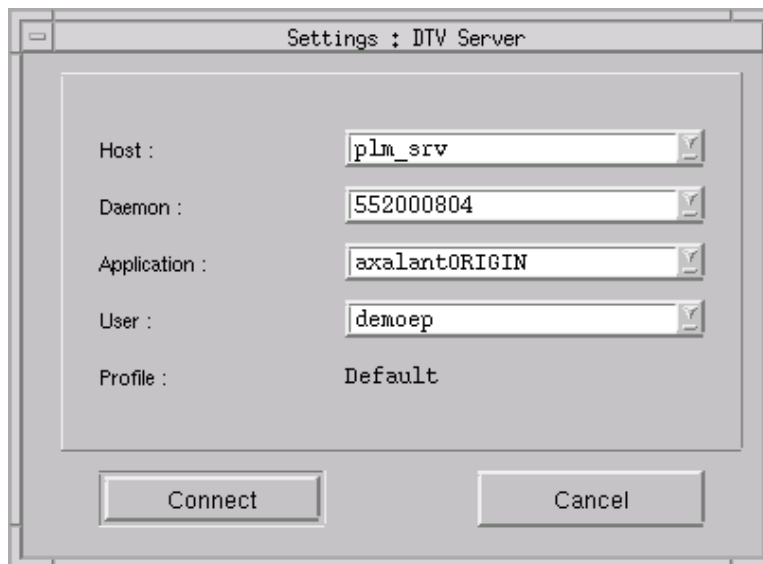
Follow the instructions in this section to test the client installation.

1. Start the UNIX Client.

On UNIX systems, the command to invoke the UNIX Client (using the complete path) is:

```
/<InstallDir>/axalant/scripts/axalant
```

This opens the Settings window shown in the following figure.



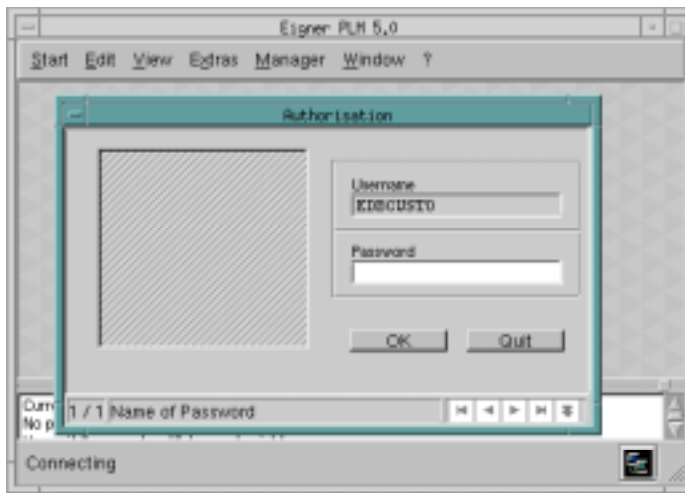
2. Enter the following startup parameters in the Setup window:

- Host: your PLM Server name
- Daemon: your DataView daemon RPC number
- Application: your PLM environment name
- User: your user name

Examples are shown in the previous figure.

3. Click the **Connect** button to continue or **Cancel** to exit.

Clicking Connect to continue opens the Authorization window, shown in the following figure.



4. Enter your password and then click **OK**.

Troubleshooting

If the installation test fails, refer to the section “Troubleshooting” in the document *Installing the Eigner PLM 5.1 UNIX Server* (PLM_UnixServer.pdf).