

# EIGNER

Precision Lifecycle Management



Installation Manual

## Installing the Eigner PLM 5.0 UNIX Client

Part Number XC501a

*U.S. Headquarters:*  
EIGNER U.S. Inc.  
200 Fifth Avenue  
Waltham, MA 02451 USA  
Tel.: 781.472.6300  
Fax: 781.472.6400

© 2002 Eigner



*European Headquarters:*  
EIGNER Germany GmbH  
Ruschgraben 133  
D-76139 Karlsruhe  
Tel.: +49 / 721 / 62 91 0  
Fax: +49 / 721 / 62 91 88

[www.eigner.com](http://www.eigner.com)



## **Important Notice**

This document contains information protected by copyright.

All rights are reserved, including the translation. No part of this documentation may be reproduced in any way (print, photocopy, microfilm or any other form) or processed, duplicated or distributed by use of electronic system without written permission of the company. The information contained in this online documentation does not constitute any obligation on the part of the seller. The software described in this online documentation is delivered under licensing contract which governs its use.

Eigner is not liable for errors in this documentation.

All trademarks are the property of their respective owners.



# Contents

<b>1</b>	<b>Introduction</b>	<b>1</b>
1.1	Where to Go for More Information	1
1.2	Preparing the Installation	1
1.3	Hardware and Software Requirements	1
<b>2</b>	<b>Installing the Eigner PLM 5.0 Client</b>	<b>3</b>
2.1	Preparing the Installation	3
2.1.1	Mounting the CD for HP-UX	4
2.1.2	Mounting the CD for Solaris	5
2.1.3	Mounting the CD for IRIX	5
2.1.4	Mounting the CD for AIX	6
2.2	Starting the Installation	6
2.3	Testing Your Client Installation	8
2.4	Troubleshooting	9

# 1 Introduction

This guide describes how to install the Eigner PLM 5.0 UNIX Client.

## 1.1 Where to Go for More Information

For information on installing the Eigner PLM 5.0 UNIX Server, refer to the document *Installing the Eigner PLM 5.0 UNIX Server* (PLM50\_UNIX\_SRV.pdf).

For complete information on installation prerequisites, including required operating system maintenance-level fixes and system patch levels, refer to the document *Eigner PLM 5.0 Prerequisites Guide* (PLM50\_INST\_REQS.pdf).



*The Eigner PLM installation guides are available in the doc directory on the product CD. To view Adobe® Portable Document Format (PDF) files, use Adobe Acrobat Reader® software, which is available at no charge at [www.adobe.com](http://www.adobe.com).*

## 1.2 Preparing the Installation

Before installing the UNIX Client, do all of the following:

- Review the hardware and software requirements for your platform.
- Follow the instructions in the next chapter to prepare the installation.

## 1.3 Hardware and Software Requirements

This section describes hardware and software requirements for installing and running the Eigner PLM UNIX Client on a separate machine from the Eigner PLM Server. For information on requirements for other Eigner PLM components, refer to the document *Eigner PLM 5.0 Prerequisites Guide* (PLM50\_INST\_REQS.pdf), located in the doc directory on the product CD.

To install and run the UNIX Client you'll need:

- A machine running one of the following operating systems:
  - HP UX 11.11
  - Sun Solaris 8
  - SGI IRIX 6.5
  - IBM AIX 4.3.3
- A display with a resolution of 800 by 600 pixels or higher (1024 by 768 or higher recommended)
- Memory: 128 MB RAM
- Disk space: 170 MB, for the installation directory



*Operating system versions other than those listed above are not supported at this time.*

## 2 Installing the Eigner PLM 5.0 Client

### 2.1 Preparing the Installation



*Java Runtime Environment 1.3, which is required, is installed automatically during the installation process.*



**Log in as the installation user.**



**If you are working remote, set the DISPLAY environment variable:**

- Check whether your environment variable DISPLAY is set to your current working display by calling:

```
echo $DISPLAY
```

- If *\$DISPLAY* is unknown to your shell environment, set it as follows:

- If you're running in a c shell (csh):

```
setenv DISPLAY <YourCurrentDisplay>:0.0
```

**Example:** `setenv DISPLAY 192.168.0.2:0.0`

- If you're running in a k shell (ksh):

```
set DISPLAY=<YourCurrentDisplay>:0.0  
export DISPLAY
```



**Create the installation directory in which you want to install the Eigner PLM 5.0 software (for example, /app/plm50).**



**Mount the Eigner PLM 5.0 Installation CD to your file system:**

The CD has an ISO 9660 file system with Rock Ridge extension (rrip). If you get filenames such as "filename;1" (HP-UX), use the mount option rrip to get correct filenames. The mount command needs the name of the special file (/dev/\*). See /etc/fstab or use the system tools.

### 2.1.1 Mounting the CD for HP-UX

**1. Establish the file `/etc/pfs_fstab`:**

```
<device_file> <mount_point> <file_type>  
<translation_method>  
/dev/dsk/c5t2d0 /SD_CDROM pfs-rrip xlat=unix 0 0
```

The file contains only one line, for example:

```
/dev/dsk/clt2d0 /SD_CDROM pfd-rrip xlat=unix 0 0)
```

**2. Create the mount point:**

```
mkdir /SD_CDROM
```

**3. Insert the CD.**

**4. Enter the following commands:**

```
nohup /usr/sbin/pfs_mountd &  
  
nohup /usr/sbin/pfsd &  
  
/usr/sbin/pfs_mount /SD_CDROM
```

**5. Use the CD.**

**6. Release the CD by entering:**

```
/usr/sbin/pfs_umount /SD_CDROM
```

If you are using the command `df`, the CDROM file system is not attached. Check the existence of the CDROM file system with `cd /SD_CDROM` and `ls`.

The command `pfs_mount` inserts an entry in `/etc/mnttab`. If you do not create a file `/etc/pfs_fstab`, you can add the options to the `pfs_mount` command:



```
pfs_mount -t rrip -x /dev/dsk/... /SD_CDROM
```

```
pfs_mount -t rrip -x /dev/dsk/clt2d0 /SD_CDROM
```

If the processes `pfs_mountd` and `pfsd` are terminated with `kill`, the child processes `pfs_mountd.rpc` and `pfsd.rpc` are stopped by the father process. It is inadvisable to kill the mounted file system processes!



*If you make a mistake during the mount procedure, you may need to reboot the machine.*

### 2.1.2 Mounting the CD for Solaris

The operating system should recognize the inserted CD automatically and mount it to `/cdrom` or `/CDROM`. The operating system releases the CD with the command `eject /cdrom`.

If the automatic mount does not run, you'll need to mount the CD by command with root privileges.

### 2.1.3 Mounting the CD for IRIX

To mount the SGI IRIX installation CD, use:

- `mount -t iso9660 /dev/rdisk/... /cdrom`
- `mount -t iso9660 /dev/rdisk/dsk0d7vol /cdrom`

or use:

- `mount_iso9660 /dev/scsi/... /CDROM iso9660 ro`
- `mount_iso9660 /dev/scsi/sc1d610 /CDROM iso9660 ro`

### 2.1.4 Mounting the CD for AIX

To mount the AIX installation CD, use:

- `mount -o ro -v cdrfs /dev/cd0/cdrom`

or use:

- `smit`

## 2.2 Starting the Installation

1.

To start the installation, change to the setup directory:

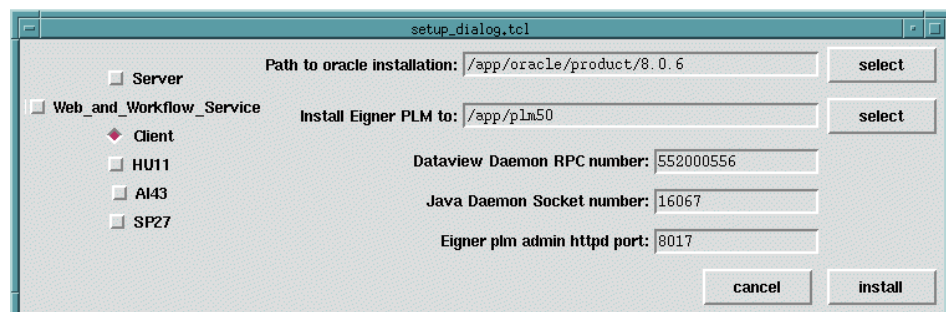
```
cd /cdrom/unix/setup
```

2.

Enter the following command:

```
./setup
```

This opens the setup window, shown in the following figure, which you can use to set the necessary parameters.



The following parameters refer to the server installation only and are not required for the client installation:

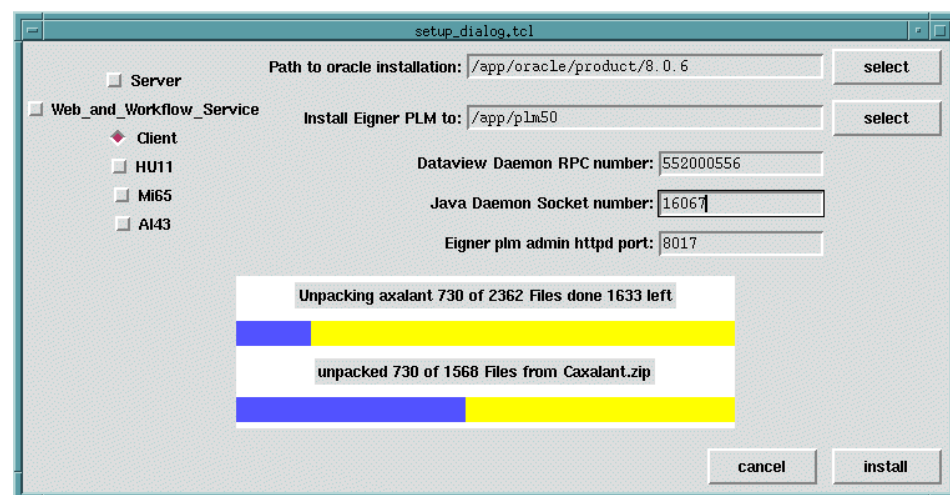
- Path to Oracle installation
- DataView Daemon RPCnumber
- Eigner plm admin httpd port

**3.****Edit the following parameters:**

- Installation Type:  
Make sure that the Client button is selected.
- Install Eigner PLM to:  
Enter the path for your Eigner PLM 5.0 installation target if it differs from the default entry.
- Install clients for additional platforms:  
To install clients for additional platforms, select their boxes on the left side of the setup window. Depending on the UNIX platform where you started the installation process, you can select any of the following Eigner PLM clients
  - HU11 – HP UNIX
  - Mi65 – SGI IRIX
  - AI43 – IBM AIX
  - SP27 – Sun Solaris

**4.****Start the installation:**

Click the install button. Depending on how many platforms you install, the installation may take from about ten minutes to one hour.



After the installation process has finished you can test the installation by running an Eigner PLM 5.0 client. Refer to the sections on running the UNIX Client, later in this manual.

## 2.3 Testing Your Client Installation

Follow the instructions in this section to test the client installation.

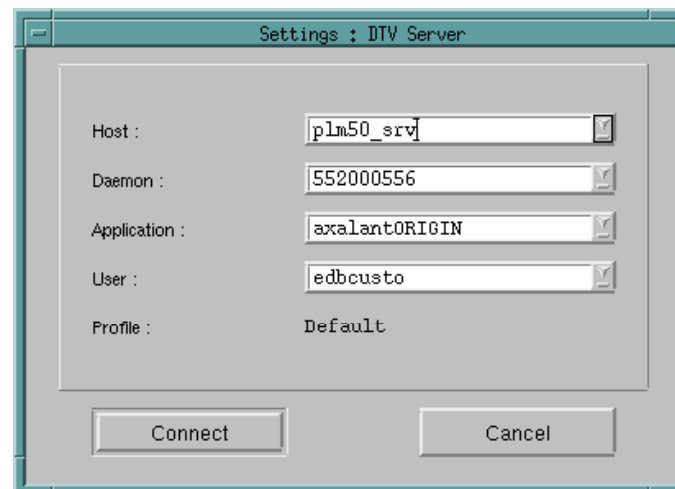
1.

### Start the UNIX Client.

On UNIX systems, the command to invoke the UNIX Client (using the complete path) is:

```
/<InstallDir>/axalant/scripts/axalant
```

This opens the Settings window shown in the following figure.



2.

### Enter the following startup parameters in the Setup window:

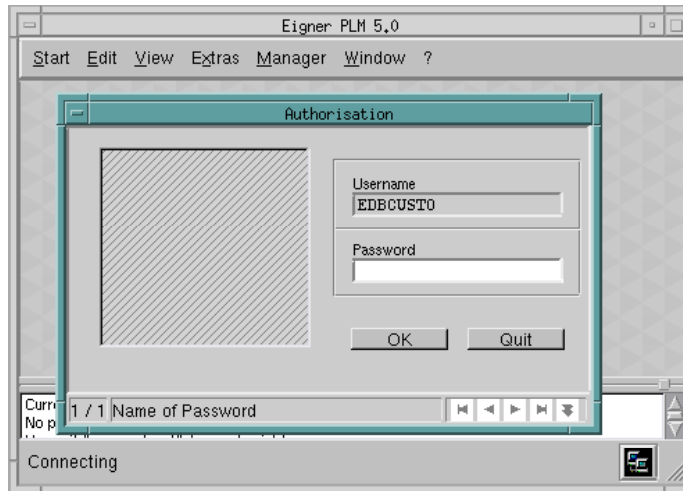
- Host: your PLM Server name
- Daemon: your DataView daemon RPC number
- Application: your PLM environment name
- User: your user name

Examples are shown in the previous figure.

3.

**Click the Connect button to continue or Cancel to exit.**

Clicking Connect to continue opens the Authorization window, shown in the following figure.



4.

**Enter your password and then click OK.**

## 2.4 Troubleshooting

If the installation test fails, refer to the section “Troubleshooting” in the document *Installing the Eigner PLM 5.0 UNIX Server* (PLM50\_UNIX\_SRV.pdf).