

Oracle Agile Engineering Data Management

- Release Notes for Agile e6.1.2.2

August 26, 2015

Part No. E22325-02

The scope of Agile e6.1.2.2 comprises of functional enhancements, platform changes and bug-fixes.

This document outlines the enhancements and additions to the core product, as well as the improvements in each of the following areas:

- Java Client
- AutoVue Integration
- LogiView
- External Mailing
- CAD Integration
- Office Suite
- Userexits
- Configuration Parameter
- Web Client
- Security
- FMS Server
- Web Services
- Installer
- WebLogic
- Rollup Patch
- De-Supported

This document also outlines the features and functionalities which are not supported in this release.

Note Next to this, some bug fixes have been rolled up in Agile e6.1.2.2. Please see the Release Notes – Bug Fixes for Agile e6.1.2.2, which contains a list of fixed bugs and a list with Known Issues.

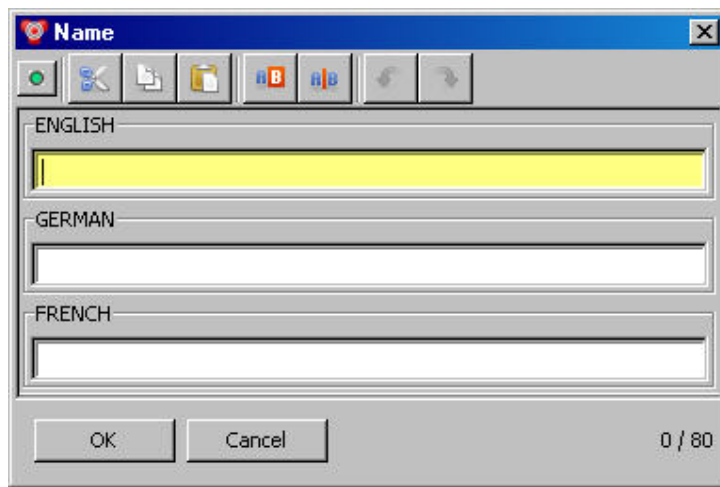
Note A detailed list of supported platforms can be found in the document Release Notes – Platform Support for Agile e6.1.2.2.

Contents

Oracle Agile Engineering Data Management.....	1
- Release Notes for Agile e6.1.2.2.....	1
Java Client.....	3
Multilingual Mask.....	3
New Command Line Parameter	3
Auto Complete Feature	3
URL Support.....	4
AutoVue Integration.....	4
Support of AutoVue 20.1.1	4
Improved Metafile Handling.....	4
Distributed File Management (DFM) Support.....	5
LogiView	5
Userexit "dal_wdg_rfr_cli".....	5
Function "field_write()".....	6
Function "environment()".....	6
External Mailing	6
CAD Integration	6
Office Suite	6
MS-Office 2010	6
Enhanced Property Exchange.....	6
Userexits.....	7
xase_shw_hie.....	7
Configuration Parameter	7
EDB-CHR-UPP-DENY	7
Web Client.....	7
Security	7
FMS Server	7
Web Services	7
Update Object	7
Property "isMultiLng"	8
Installer.....	8
Patch Upgrade	8
WebLogic.....	8
Rollup Patch	8
De-Support	8
Office Suite Parameter GDM_MSG_005.....	8

Java Client

Multilingual Mask



The multilingual mask has been improved to display all languages below each other, instead of on different tabs.

- The Multilanguage mask is displayed for a form in Insert, Edit, Query, and View mode.
- The first language field is the default field of user data in the form
- The field size (height and width) is derived from the original field.
- Pressing the Save button will store the new content.
- Pressing the Cancel button will discard the new content.

New Command Line Parameter

To prevent that the AutoVue viewer affects the current look&feel settings of the Java Client, the default look&feel definition has to be set to "Metal" - command line parameter "swing.defaultlaf". This does not affect the look&feel settings selected by the user, the user can still configure any look&feel he wants to use. The default look&feel is used by the AutoVue viewer to detect that another application controls the look&feel settings. This prevents the following effects:

- Look&Feel changes during loading of the AutoVue viewer.
- Focus problems in lists of Agile e6 masks.

Note See also BugID 12727080

Auto Complete Feature

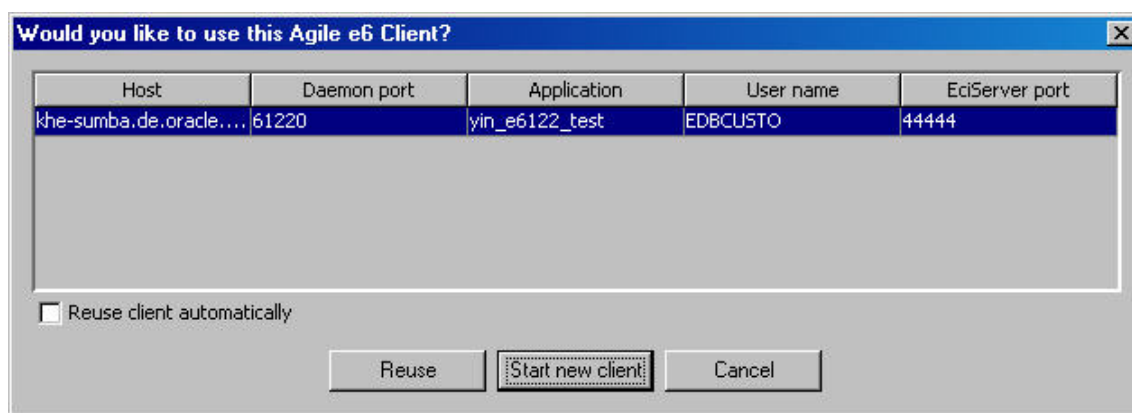
The switch "Enable auto completion" enables and disables the auto completion feature in the Java Client. The switch is found in the "Preference" mask, under "General --> Masks" on the tab "Others"

Note See also BugID 13242724

URL Support

If the Java Client is started via a URL that points to a specific Agile e6 object, the user has the choice to use an already running Java Client instead of starting a new Java Client session.

- One Java Client is already running
The user can decide if he wants to use the already running client or if he wants to start a new client.
- One Java Client is running and checkbox “Re-use client automatically” is checked
The system automatically re-uses the already running client.
- Default
Only clients will show up which use the same “Host” and “Application” parameters.



AutoVue Integration

Agile e6.1.2.2 provides an enhanced AutoVue 20.1.1 integration which allows an improved Offline Metafile Cache, and a Multiple Location Support.

Support of AutoVue 20.1.1

The integration of Agile e6.1.2.2 supports AutoVue 20.1.1. AutoVue 20.1.1 provides an updated list of supported file formats.

Improved Metafile Handling

The handling of AutoVue metafiles has been optimized.

- Metafiles can be checked-in to the Agile e6 vault pro-actively, using a batch service to create and process the Offline Metafiles
- If the corresponding metafile is not available in the AutoVue server during loading of a CAD model, the integration will retrieve the metafile from the Agile e6 file vault. Thus, the processing of complex CAD drawings will be accelerated
- Uses the correct DFM site definition of the offline metafile cache batch service when checking in a metafile.

Note The metafile should be checked in by the Offline Metafile Cache batch service only.

- The AutoVue integration retrieves the metafile from PLM vault even if the metafile is no more present in the AutoVue server cache.

Distributed File Management (DFM) Support

AutoVue integration is fully DFM enabled. For each AutoVue Server the administrator can define its specific DFM site. This gives a lot of flexibility to the deployment structure while assuring best possible performance

For the DFM Support, two new configuration parameters have been created:

- **EDB-PVM-AV-DFM-SITE**
Defines the DFM site to use for the AutoVue Server.
- **EDB-PVM-AV-SITE-REF**
In order to simplify the definition and to avoid redundancy, the configuration parameter EDB-PVM-<siteID> allows to re-use settings for several sites.

Note Only settings which are not specified for the remote site will be retrieved from the central site.

Note The reference from a remote site to the central site can only be defined as a single-tiered reference.

The AutoVue integration supports now different configurations of global working.

- **Central AutoVue – No DFM**
This is the most simple scenario. The central AutoVue integration supports a site specific configuration that uses the environment variable EP_PVM_SITE to choose the configuration of the client location. The stored procedure does not check if the files are available, because DFM is not active.
- **Central AutoVue – With DFM**
In this scenario there are multiple DFM sites, but only one DFM site actually hosts an AutoVue server. The AutoVue server uses the central file server to view the file. The DFM configuration of the AutoVue server is configured through the AutoVue configuration parameter EDB-PVM-AV-DFM-SITE.

Note If a user changes a file on the remote site, it has to be replicated to the central site to be able to view it with AutoVue. Furthermore, markup files will be checked in at central site only.

- **Decentral AutoVue – With DFM**
In this scenario some or all DFM sites host an AutoVue Server. All AutoVue Servers are configured to access their local file server for accessing files.

Note If a user changes a file on a remote site, it has to be replicated to the AutoVue site first to be able to view it with AutoVue. Furthermore, markup files will be checked in at the AutoVue site only

LogiView

Userexit “dal_wdg_rfr_cli”

There is a new option /TAB=<selection_name> for the usxexit function dal_wdg_rfr_cli to show a sub mask with the given selection name in the main mask.

LogiView Example:

```
Open a 'Class' mask with the sub mask 'Classification List'
10 RES=@bvb_usx_opn_ent ("EDB-GROUP /EDB-F=EDB-GRP-CFR @>")
```

```
20 RES = @dal_wdg_rfr_cli(strprint("%d /TAB=EDB-GRP-ATT-RLI",
widget_id()))
```

Function “field_write()”

The LogiView function field_write has a new option called /REFRESH in addition to /NO_DIRTY and /FLD_USX. This option is used to immediately send a new field value to the client. The client will then refresh the field value in its UI.

Note Only use this option if it is required by your use case, because it will increase the communication between server and client. This might result in a noticeable delay, especially if the client is connected to the server via a wide area network.

Note See also BugID 10377182.

Function “environment()”

The LogiView function environment has been enhanced to read the following system parameters:

- SYSTEM_LANGUAGE: The current language of the system
- USER_LANGUAGE: The current language of the current user
- UI_LANGUAGE: The system language defined by the default LANGUAGE_SYSTEM
- DATA_LANGUAGE : The user language defined by the default LANGUAGE_USERDATA,

Note If you are using lng_set_act_sys in a macro, only the SYSTEM_LANGUAGE is updated. Accordingly, using lng_set_act_usr in a macro does only update USER_LANGUAGE.

Note See also BugID 12575712.

External Mailing

The userexit exm_snd_ext supports now the parameter – '<log-file-path-and-name>' to provide more detailed log information. The log output includes for instance the input parameters of the userexit.

Note See also BugID 12939971

CAD Integration

Agile e6.1.2.2 provides a much more powerful fastload capability. It allows the CAD integration to control the set of files which is actually transferred from Fileserver to the CAD Client system.

This new capability combines the power of the bulk fileload mechanism with the intelligent selective loading, and thus results in a significant performance boost.

The new ECI function “eci_upd_cax_fil” is provided, to update columns CKO_FLAG and NEW_NAME for records in T_CAX_FIL_TMP.

Office Suite

MS-Office 2010

Office Suite supports MS-Office 2010 on Windows 7 (32/64-Bit) platform.

Enhanced Property Exchange

Performance improvements have been achieved by transferring all document properties in a bulk

operation to the client. Especially in a WAN environment the performance boost is significant.

Userexits

xase_shw_hie

A new parameter option /NO_MASKLIMIT has been added to xase_shw_hie.

Now, the whole parameter format of xase_shw_hie is: /USE=<useCaseName> [/NO_ROOT] [/NO_MASKLIMIT]

With the /NO_MASKLIMIT option of xase_shw_hie, the full structure will still be shown, even if the record number of the full structure explosion exceeds the mask limit.

Configuration Parameter

EDB-CHR-UPP-DENY

The new configuration parameter EDB-CHR-UPP-DENY defines characters which are excluded from conversion to upper case. The default value is "µß".

Note These characters should not be converted to upper case!

Web Client

The Web Client now supports Firefox 10 and Internet Explorer 9.

Security

Password Encryption

Updated password encryption algorithm now using SHA-1. SHA-1 provides greater resistance to attacks, and thus increases the security.

FMS Server

The File Server and FMS client trace contains now information about the RPC and socket layer on windows. This information is printed on log level DEBUG (7). The log level can be configured by using the "regedit" tool:

```
[HKEY_LOCAL_MACHINE\SOFTWARE\Agile\<FMS_SERVICE_NAME>]
"LOG_LEVEL"=dword:00000007
```

Note The default value should be INFO (6)

Note See also BugID 12560330

Web Services

Update Object

The WebService Interface has been further extended with Agile e6.1.2.2. The WebService interface provides an additional WebService "UpdateObject" which allows to update an entity object.

Property "isMultiLng"

A new property "isMultiLng" has been added to the Agile e6 Meta Attribute, to find out if a field is a multilanguage field or not.

Installer

Patch Upgrade

The release contains the possibility to upgrade all components from Agile e6.1.2.0 to Agile e6.1.2.2. This includes the upgrade to the newest database patch (11.2.0.3) as the setup of the new WebLogic version 10.3.5.

Native and J2EE software components, as well as the database dump of all applications in an installation, will be migrated. For more information please see Patch Upgrade Manual for Windows and Unix.

WebLogic

Agile e6.1.2.2 now supports the new generic WebLogic version 10.3.5 with 64-bit JRE environment on all server platforms.

JRockit JVM is used on Windows 64-bit, Suse Linux 64-bit and Oracle Solaris for Sparc. JRockit offers enhanced monitoring and administration features and improvements for Java applications.

Rollup Patch

Bugfixes that have been delivered for Agile e6.1.x are included in this Release. See detailed list of bugfixes

De-Support

Office Suite Parameter GDM_MSG_005

GDM_MSG_005 is not supported anymore in Office Suite configuration GDM_MSG_YES / GDM_MSG_NO / GDM_MSG_YES_BAT / GDM_MSG_NO_BAT. The original check-out file will be used during check-in operation.