

Oracle Agile Engineering Data Management

Client Installation Guide on Windows

Release e6.2.1.0

E69175-05

June 2023

E69175-05

Copyright © 1995, 2022, 2023 Oracle and/or its affiliates. All rights reserved.

Primary Author:

Contributing Author:

Contributor:

This software and related documentation are provided under a license agreement containing restrictions on use and disclosure and are protected by intellectual property laws. Except as expressly permitted in your license agreement or allowed by law, you may not use, copy, reproduce, translate, broadcast, modify, license, transmit, distribute, exhibit, perform, publish, or display any part, in any form, or by any means. Reverse engineering, disassembly, or decompilation of this software, unless required by law for interoperability, is prohibited.

The information contained herein is subject to change without notice and is not warranted to be error-free. If you find any errors, please report them to us in writing.

If this is software or related documentation that is delivered to the U.S. Government or anyone licensing it on behalf of the U.S. Government, then the following notice is applicable:

U.S. GOVERNMENT END USERS: Oracle programs, including any operating system, integrated software, any programs installed on the hardware, and/or documentation, delivered to U.S. Government end users are "commercial computer software" pursuant to the applicable Federal Acquisition Regulation and agency-specific supplemental regulations. As such, use, duplication, disclosure, modification, and adaptation of the programs, including any operating system, integrated software, any programs installed on the hardware, and/or documentation, shall be subject to license terms and license restrictions applicable to the programs. No other rights are granted to the U.S. Government.

This software or hardware is developed for general use in a variety of information management applications. It is not developed or intended for use in any inherently dangerous applications, including applications that may create a risk of personal injury. If you use this software or hardware in dangerous applications, then you shall be responsible to take all appropriate fail-safe, backup, redundancy, and other measures to ensure its safe use. Oracle Corporation and its affiliates disclaim any liability for any damages caused by use of this software or hardware in dangerous applications.

Oracle and Java are registered trademarks of Oracle and/or its affiliates. Other names may be trademarks of their respective owners.

Intel and Intel Xeon are trademarks or registered trademarks of Intel Corporation. All SPARC trademarks are used under license and are trademarks or registered trademarks of SPARC International, Inc. AMD, Opteron, the AMD logo, and the AMD Opteron logo are trademarks or registered trademarks of Advanced Micro Devices. UNIX is a registered trademark of The Open Group.

This software or hardware and documentation may provide access to or information about content, products, and services from third parties. Oracle Corporation and its affiliates are not responsible for and expressly disclaim all warranties of any kind with respect to third-party content, products, and services unless otherwise set forth in an applicable agreement between you and Oracle. Oracle Corporation and its affiliates will not be responsible for any loss, costs, or damages incurred due to your access to or use of third-party content, products, or services, except as set forth in an applicable agreement between you and Oracle.

Preface	v
Audience.....	v
Documentation Accessibility	v
Related Documents	v
Conventions.....	v
 1 Introduction	
1.1 Where to Go for More Information	1-1
 2 Preparing the Installation	
2.1 Requirements for the Office Suite Installation	2-1
2.2 Parallel Installation of Agile e6.x and Agile e6.2.1.0.....	2-1
 3 Installing with the Agile e6 Installer	
3.1 Enable Trace	3-6
 4 Installing in Silent Mode	
4.1 Java Client.....	4-1
4.2 Agile e6 AutoVue Integration.....	4-1
4.3 Office Suite	4-2
4.3.1 Installation Privileges	4-2
4.3.2 Office Suite Installation Binaries	4-2
4.3.2.1 Options of the Windows Installer.....	4-3
4.3.3 Standalone Tool for Checking the Prerequisites	4-3
 5 Starting Agile e6 Java Client with Web Start	
5.1 Agile e6 AutoVue Integration - WebStart	5-2
 6 Uninstalling the Agile e6 Components	

Preface

Agile PLM is a comprehensive enterprise PLM solution for managing your product value chain.

Audience

This document is intended for administrators and users of the Agile PLM products.

Documentation Accessibility

For information about Oracle's commitment to accessibility, visit the Oracle Accessibility Program website at <http://www.oracle.com/pls/topic/lookup?ctx=acc&id=docacc>.

Access to Oracle Support

Oracle customers that have purchased support have access to electronic support through My Oracle Support. For information, visit

<http://www.oracle.com/pls/topic/lookup?ctx=acc&id=info> or visit

<http://www.oracle.com/pls/topic/lookup?ctx=acc&id=trs> if you are hearing impaired.

Related Documents

Oracle's Agile PLM documentation set includes Adobe® Acrobat PDF files. The Oracle Technology Network (OTN) website

<http://www.oracle.com/technetwork/documentation/agile-085940.html> contains the latest versions of the Agile PLM PDF files. You can view or download these manuals from the Web site, or you can ask your Agile administrator if there is an Agile PLM Documentation folder available on your network from which you can access the Agile PLM documentation (PDF) files.

Conventions

The following text conventions are used in this document:

Convention	Meaning
boldface	Boldface type indicates graphical user interface elements associated with an action, or terms defined in text or the glossary.
<i>italic</i>	Italic type indicates book titles, emphasis, or placeholder variables for which you supply particular values.

Convention	Meaning
monospace	Monospace type indicates commands within a paragraph, URLs, code in examples, text that appears on the screen, or text that you enter.

Introduction

This guide describes how to install the Agile e6 Client set on Windows, which comprises of the following components:

- Java Client
- AutoVue Integration
- Office Suite.

You can install these components of the Agile e6 Client set in the following ways:

- With the Agile e6 Installer program, as described in chapter Installing with Agile e6 Installer.
- With the silent mode installation procedures described in chapter Installing in Silent Mode.

The Agile e6 Java Client can also be initiated by means of WebStart, as described in chapter Agile e6 Java Client - WebStart.

The Agile e6 AutoVue Integration can only be installed with an additional 64-bit JRE.

Please refer to Platform Support document for more information on operating systems supported for the Microsoft Office Suite.

Note: A comprehensive list of supported operating systems can be found in the *Prerequisites Guide for Agile e6.2.1.0*.

1.1 Where to Go for More Information

For more information about how to use the Java Client with WebStart, refer to the *Administration Manual for Agile e6.2.1.0*.

After the Client is installed, it should be able to connect to a running Agile e6 server. For information on installing the EDM server, refer to the Server Installation Guide on Windows and UNIX for Agile e6.2.1.0.

Consult the My Oracle Support for Agile to obtain further information on installing other Agile e6.2.1.0 components and optimizing your system with the components.

Preparing the Installation

Note: Please make sure that all prerequisites are met. A complete list can be found in the *Prerequisites Guide for Agile e6.2.1.0*.

2.1 Requirements for the Office Suite Installation

Detailed information about manual installation can be found in the chapter Installing in Silent Mode.

Note: A user with Administrator rights is required to install the Office Suite.

An older Office Suite cannot be installed parallel to Agile e6.2.1.0 on the same machine. Only a single Office application works with Agile e6.2.1.0.

2.2 Parallel Installation of Agile e6.x and Agile e6.2.1.0

An older Agile e6 version cannot be installed in parallel to Agile e6.2.1.0 on the same machine.

If you need to start an older Agile e6 and an Agile e6.2.1.0 client in parallel on the same machine, one client needs to be started via Webstart.

Installing with the Agile e6 Installer

The Agile e6 Installer, version 6.2, facilitates the installation of the Agile e6 Client Set, which comprises of the following components:

- ? Java Client

Note: The Java Client requires a 32-bit JRE.

- ? AutoVue Integration

Note: The AutoVue Integration requires an additional 64-bit JRE.

- ? Office Suite

To install the Agile e6 Client set:

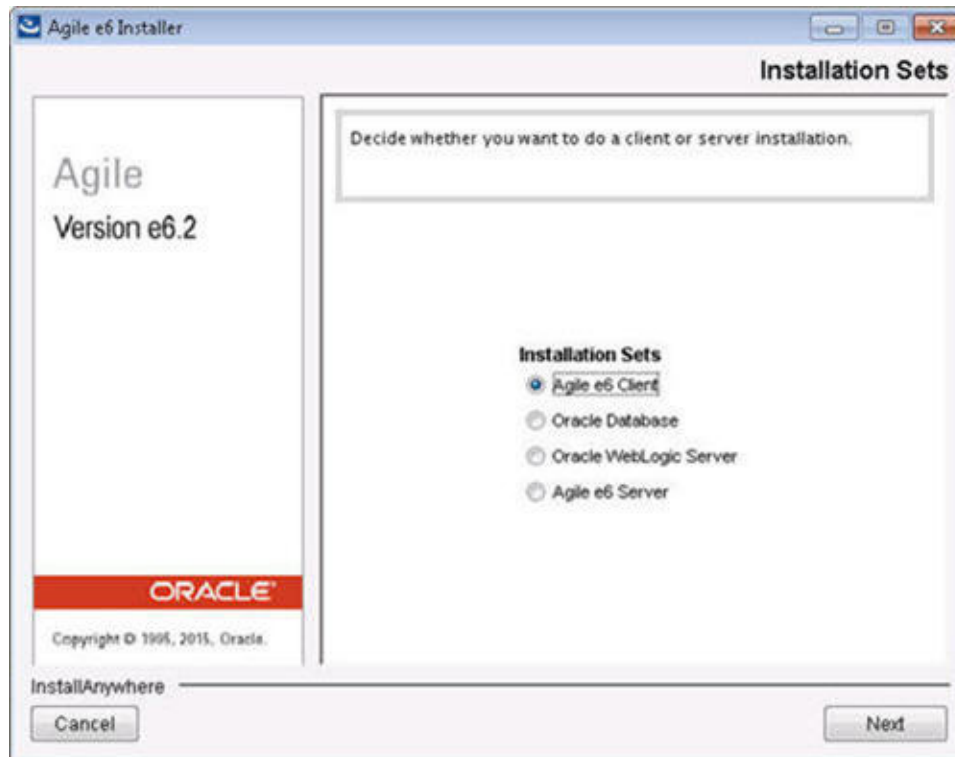
1. Extract the downloaded installation file.
2. Start the command shell with "Run as administrator".
3. Set Java Home path.

Note: The GUI Installer needs a 32bit JDK to install the client set.

```
set JAVA_HOME=C:\Program Files (x86)\Java\jdk1.8.0_<update_number>
```

4. Change to the installer directory ...\\installer.
5. Execute gui.cmd.

The Installation Sets screen opens.



6. Select the Agile e6 Client installation Set and click Next.

The Installation Destination screen opens.

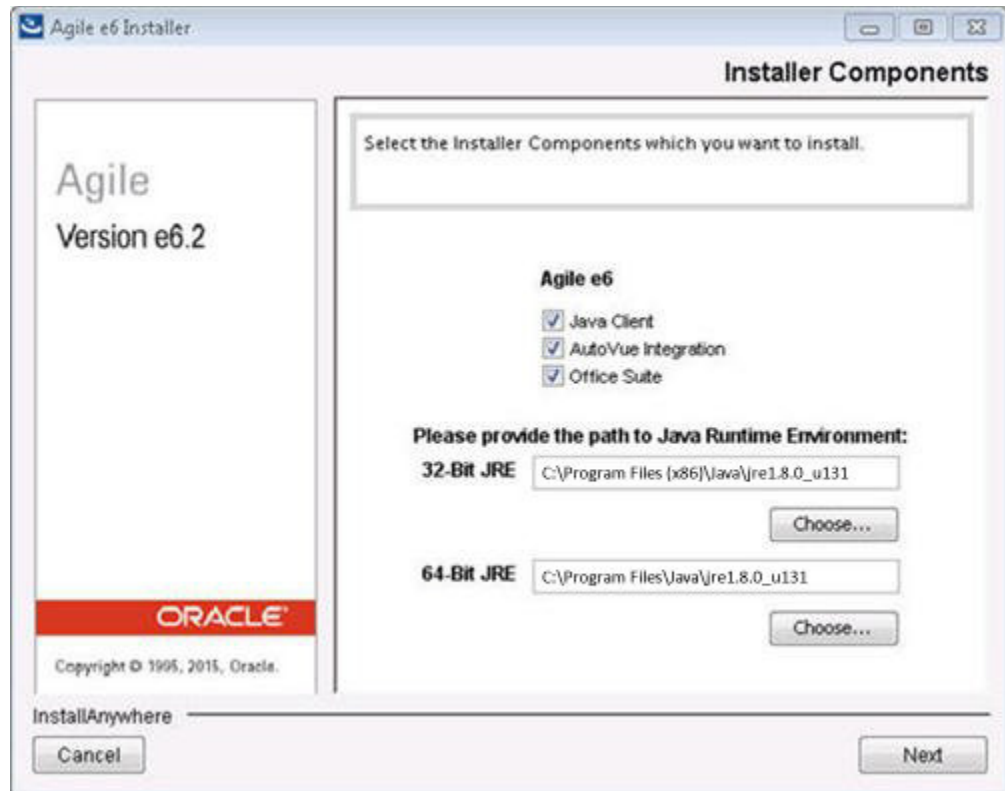
7. Enter the Destination path where the Agile e6 Client set will be installed (e.g. c:\Program Files (x86)\Agile_e6 and click Next.

Note: The installation destination is the root path to install the Agile e6 Client set. This has to be either a non existing path or an empty directory. For every component of the Agile e6 Client set, a separate subdirectory is created under this path.

The Installer Components screen is opened.

Note: Only a user with Administrator rights can install the Agile e6 Office Suite.

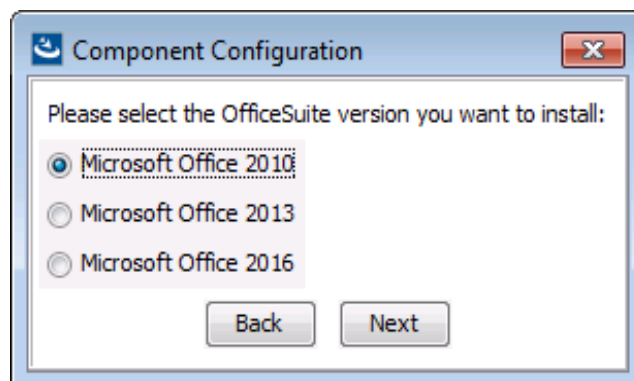
8. Select the Agile e6 components to be installed and click Next.
 1. For the Java Client installation, enter the home directory for 32-bit JRE Version 8.
 2. For the AutoVue Integration installation, enter the home directory for the 64-bit JRE Version 8



Note: De-selecting the AutoVue Integration component is also disabling the 64-bit JRE option.

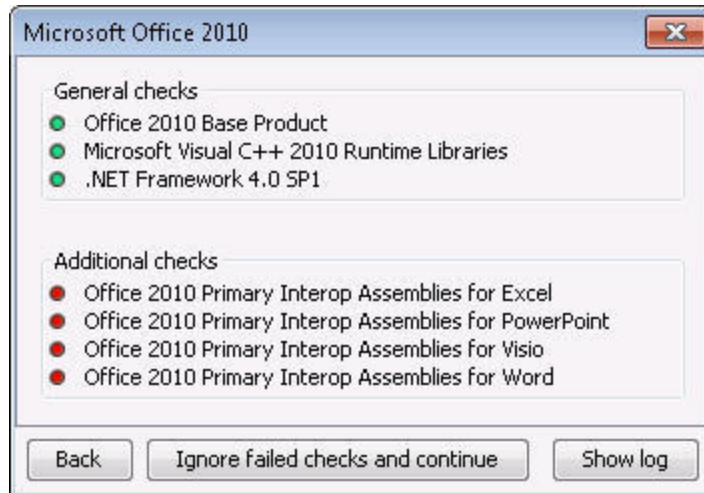
De-selecting the Agile e6 Java Client is also disabling the 32-bit JRE option, and the Agile e6 AutoVue Integration component and its 64-bit JRE option.

3. Click Next.
4. For the Agile e6 Office Suite, the Component Configuration window is opened.
5. Select the Microsoft Office version for which you want to install the Office Suite.



The following sample screen shows some failed checks, too. This implies that some prerequisites for installing the Office Suite are not met.

Note: All General checks have to pass for a successful installation. The Additional checks are not mandatory and reflect the Office products which are found on the system and for which the Office Suite will be enabled.



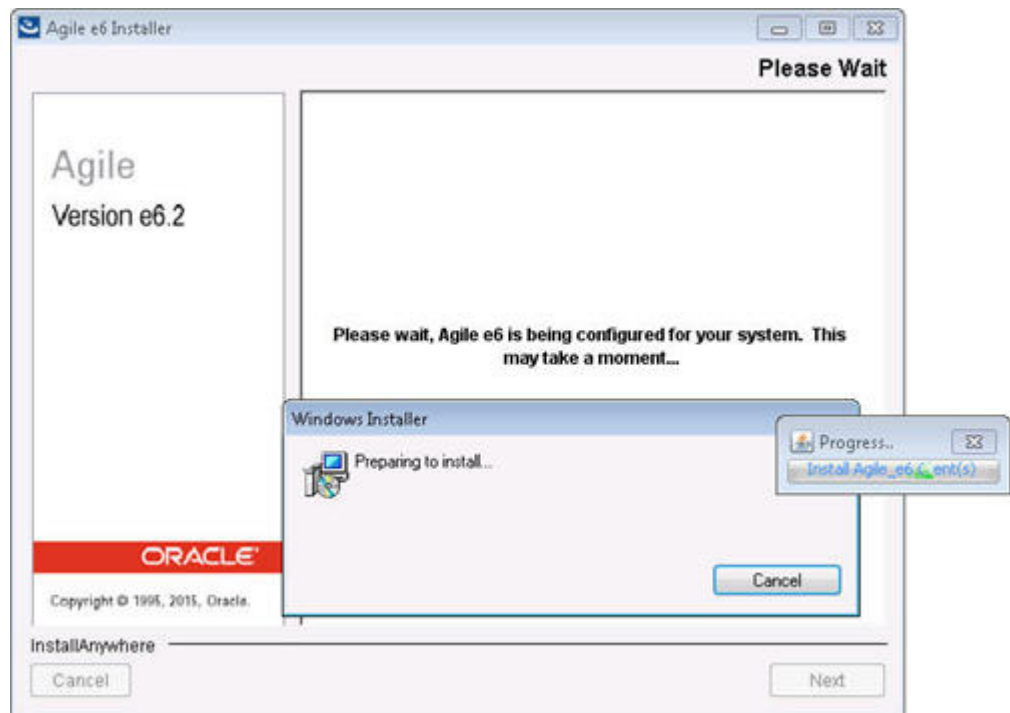
a) If you notice any failed checks (see example below - displayed with Red markings), click the Back button to stop the installer.

Note: If any of the prerequisites are missing, you are required to stop the installation, install the missing prerequisites and then start the installation process again.

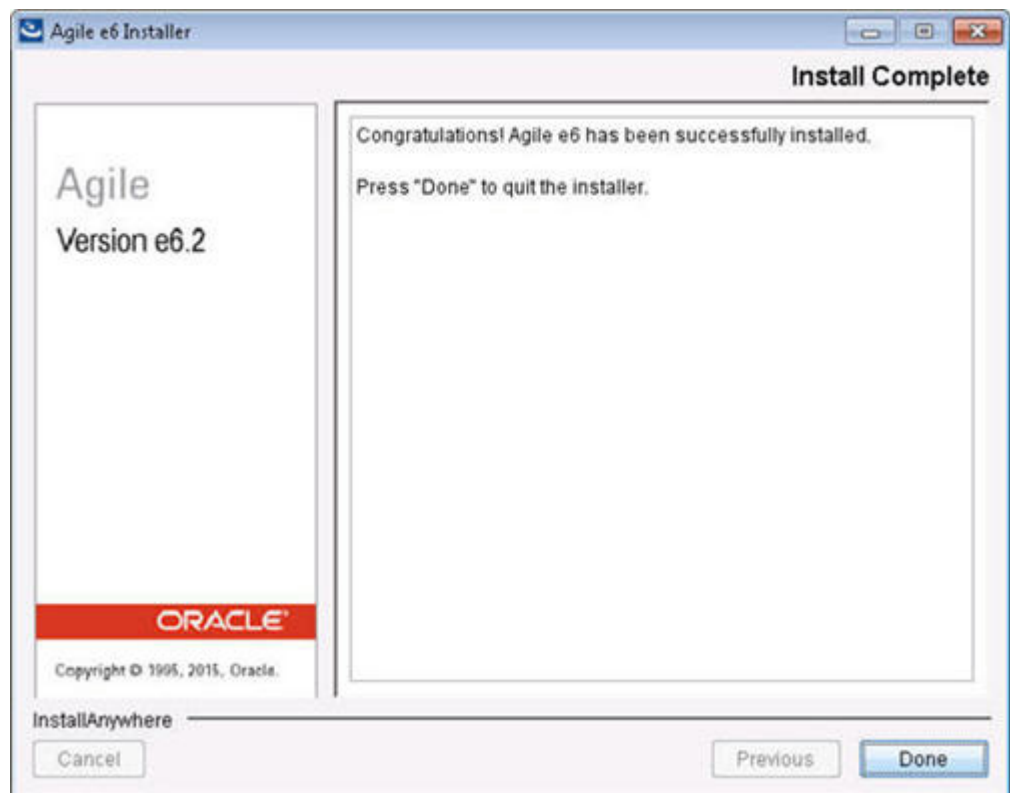
b) If you wish to fix the failed checks after the installation, click Ignore failed checks and continue.

WARNING: It may not be possible to fix the failed checks afterwards.

The system will be installed.



The Install Complete screen appears.



6. Click Done to exit the installer.

3.1 Enable Trace

Set the following environment variables for Windows to have detailed trace messages for your GUI installation:

```
? set plm_ant_loglevel=3
? set plm_ia_stderr=C:\temp\iastderr.log
? set plm_ia_stdout=C:\temp\iastdout.log
```

Ensure that a directory to store the trace file in is available.

Installing in Silent Mode

The installation tool uses the automatic installation feature of the Windows installer (msiexec). The silent installation can be executed for Agile e6 Java Client, Agile e6 AutoVue Integration, and the Agile e6 Office Suite.

The command for executing the installation in silent mode is:

```
msiexec.
```

The following are the msiexec variables:

msiexec Variable	Description
/qb	Reduces the graphical interface to show only the progress bar during the installation with msi.
/i name.msi	Installation for the respective name of the client.
ALLUSERS=2	Default for a pre-machine installation.
TARGETDIR="C:\Program Files (x86)\Oracle\Agile xxx Client"	Target path for the installation.
JAVA_HOME="C:\Program Files (x86)\Java\jre1.8.0_<update_number>"	Path to the installed 32-bit Java 8 JRE.
DISABLEADVTSHORTCUTS=1	Allows modification of the target field in the properties of the shortcut link for the Windows and Java Client.

4.1 Java Client

1. Unpack <installation_package_root>\packages\intel-ms-nt6.1\clientjavamsi.zip.

The file JavaClient.msi can be found in the directory axalant\bin\intel-ms-nt6.1.

2. Execute the silent installation for the Java Client:

Example:

```
msiexec /qb /i JavaClient.msi ALLUSERS=2 JAVA_HOME="C:\Program Files (x86)\Java\jre1.8.0_<update_number>" TARGETDIR="C:\Program Files (x86)\Agile_e6 Java Client"
```

4.2 Agile e6 AutoVue Integration

Note: A 64 bit Java 8 JRE is required to run the Agile e6 AutoVue Integration.

1. Unpack <installation_package_root>\packages\intel-ms-nt6.1\clientjvuemsi.zip.

The file JVue.msi can be found in the directory axalant\bin\intel-ms-nt6.1.

2. Execute the silent installation for the Agile e6 AutoVue Integration.

Example:

```
msiexec /qb /i JVue.msi ALLUSERS=2 JAVA_HOME="C:\Program Files\Java\jre1.8.0_<update_number>" TARGETDIR="C:\Program Files (x86)\Agile_e6\Agile JVue"
```

4.3 Office Suite

The path <OFS_INSTALL> points to the Oracle Office Suite for Agile EDM installation package.

Example:

```
axalant\bin\intel-ms-nt6.1\office2010
```

4.3.1 Installation Privileges

Note: The cmd shell, from where all the Office Suite installation tasks are executed, always has to be started with Run as administrator even if you are doing the installation as the Administrator User.

To open the cmd shell with Run as administrator, do the following:

1. Select Start > All Programs > Accessories > Command Prompt.
2. Select Command Prompt and from the context menu, select Run as administrator.

The User Account Control screen appears.

3. Apply the needed credentials if asked and select Yes/Continue to go ahead.

The Windows cmd shell is opened. This is the shell you have to use for all the Office Suite installation tasks.

4.3.2 Office Suite Installation Binaries

1. Unpack the Zip file for the respective Office Suite version:

Microsoft Office 2010 (32 bit)	<installation_package_root>\packages\intel-ms-nt6.1\officesuite2010.zip
Microsoft Office 2013 (32 bit)	<installation_package_root>\packages\intel-ms-nt6.1\officesuite2013.zip
Microsoft Office 2016/2019/365 (32 bit)	<installation_package_root>\packages\intel-ms-nt6.1\officesuite2016.zip
Microsoft Office 2021/365 (32 & 64 bit)	<installation_package_root>\packages\intel-ms-nt6.1\officesuite2021.zip

2. Check the prerequisites and installation requirements.

For detailed information on the prerequisites and installation requirements refer to the Prerequisites Guide for Agile e6.2.1.0.

3. Execute the prerequisite checks.

4. If the prerequisite checks are successful, execute the silent installation:

Example:

```
msiexec /qb /i GDMAAddin2010Setup.msi ALLUSERS=2 TARGETDIR="C:\Program Files
(x86)\Agile_e6\Office Suite"
msiexec /qb /i GDMAAddin2013Setup.msi ALLUSERS=2 TARGETDIR="C:\Program Files
(x86)\Agile_e6\Office Suite"
```

4.3.2.1 Options of the Windows Installer

? /qb

Reduces the graphical interface to only show a progress bar during the installation of the msi.

? /i name.msi

Indicates that this is an installation for name.

? ALLUSERS=2

Defaults to a per-machine installation.

For more information, see

[http://msdn2.microsoft.com/en-us/library/aa367559\(VS.85\).aspx](http://msdn2.microsoft.com/en-us/library/aa367559(VS.85).aspx), or

[http://msdn2.microsoft.com/en-us/library/aa371865\(VS.85\).aspx](http://msdn2.microsoft.com/en-us/library/aa371865(VS.85).aspx)

? TARGETDIR="C:\Program Files (x86)\Agile_e6\Office Suite": installation target

Example:

? Installation for Microsoft Office 2010

```
msiexec /qb /i GDMAAddin2010Setup.msi ALLUSERS=2 TARGETDIR="C:\Program
Files (x86)\Agile_e6\Office Suite"
```

Note: The installation tool checks all the prerequisites, except for the Microsoft Office application.

Note: Only the installation progress bar is displayed during the installation.

4.3.3 Standalone Tool for Checking the Prerequisites

An additional tool for checking the Office Suite prerequisites can be found at the following location:

<installation_package_root>\addon\officesuite\officecheck.zip

This tool can be used without the need to copy the whole installer to a client machine.

Note: The Office Suite check requires an installed 32-bit Java Runtime Environment Version 8 (JRE) to execute the checks.

1. Extract the officecheck.zip file on the client machine.
2. Start a cmd shell as administrator.
3. The environment variable JAVA_HOME needs to be set to the path where the Java Runtime Environment (JRE) is installed.

Example C:\Program Files (x86)\Java\jre1.8.0_<update_number>

4. To check for all supported Office versions, execute the following command:

officecheck.cmd

Note: The tool will check for all supported Office versions.

5. To check for specific Office versions, execute one of the following commands:

- ? For Microsoft Office 2010

officecheck.cmd 2010

- ? For Microsoft Office 2013

officecheck.cmd 2013

- ? For Microsoft Office 2016

officecheck.cmd 2016

- ? For Microsoft Office 2019

officecheck.cmd 2019

- ? For Microsoft Office 365

officecheck.cmd 365

- ? For Microsoft Office 2021

officecheck.cmd 2021

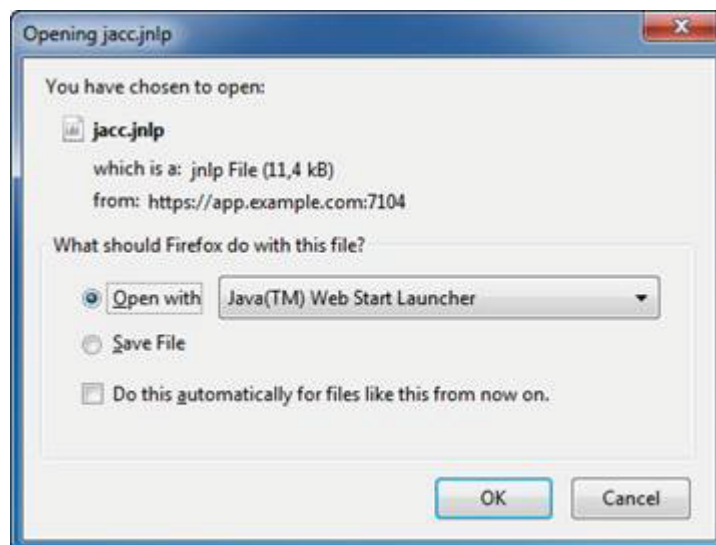
Starting Agile e6 Java Client with Web Start

To initiate Agile e6 Java Client with WebStart:

1. Enter a URL like the following into the address bar:
`https://app.example.com:7104/Jacc/jacc.jnlp`

app.example.com	Name of the Application Server
7104	Port number on the Application Server

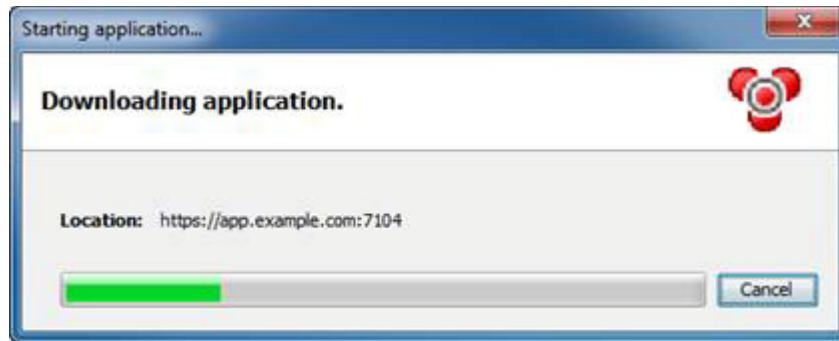
The Opening jacc.jnlp screen opens.



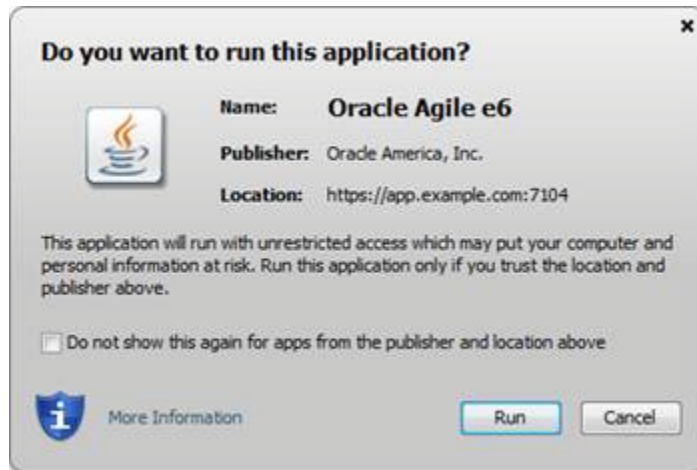
2. Click OK.

The Downloading application screen opens.

Note: This window is opened only for the first download.



Upon completion of the download, a security requester opens.



3. Click Run to start the application.

Note: A working internet configuration for Java is required to verify the security certificates of this application.

4. In Agile e6, enter the connection details in the login dialog.

5.1 Agile e6 AutoVue Integration - WebStart

The Agile e6 AutoVue Integration runs as a WebStart application on the client and is started by the Java Client. The Java Client and the Agile e6 AutoVue Integration establish a socket connection so that the Java Client can control the Agile e6 AutoVue Integration.

Note: A 64 bit Java JRE is required to run the Agile e6 AutoVue Integration.

Uninstalling the Agile e6 Components

Note: To uninstall the Agile e6 Clients and/or the Office Suite, use the standard Microsoft Windows Add or Remove Programs application.
