

ORACLE® FUSION INTELLIGENCE FOR PEOPLESFT ENTERPRISE 9.0 SUPPLEMENTAL INSTALLATION INSTRUCTIONS

January 2007

Oracle® Fusion Intelligence for PeopleSoft Enterprise 9.0 Supplemental Installation Instructions

Copyright © 2007, Oracle. All rights reserved.

The Programs (which include both the software and documentation) contain proprietary information; they are provided under a license agreement containing restrictions on use and disclosure and are also protected by copyright, patent, and other intellectual and industrial property laws. Reverse engineering, disassembly, or decompilation of the Programs, except to the extent required to obtain interoperability with other independently created software or as specified by law, is prohibited.

The information contained in this document is subject to change without notice. If you find any problems in the documentation, please report them to us in writing. This document is not warranted to be error-free. Except as may be expressly permitted in your license agreement for these Programs, no part of these Programs may be reproduced or transmitted in any form or by any means, electronic or mechanical, for any purpose.

If the Programs are delivered to the United States Government or anyone licensing or using the Programs on behalf of the United States Government, the following notice is applicable:

U.S. GOVERNMENT RIGHTS

Open Source Disclosure

Oracle takes no responsibility for its use or distribution of any open source or shareware software or documentation and disclaims any and all liability or damages resulting from use of said software or documentation. The following open source software may be used in Oracle's PeopleSoft products and the following disclaimers are provided.

Apache Software Foundation

This product includes software developed by the Apache Software Foundation (<http://www.apache.org/>). Copyright © 2000-2003. The Apache Software Foundation. All rights reserved. Licensed under the Apache License, Version 2.0 (the "License"); you may not use this file except in compliance with the License. You may obtain a copy of the License at <http://www.apache.org/licenses/LICENSE-2.0>.

Unless required by applicable law or agreed to in writing, software distributed under the License is distributed on an "AS IS" BASIS, WITHOUT WARRANTIES OR CONDITIONS OF ANY KIND, either express or implied. See the License for the specific language governing permissions and limitations under the License.

OpenSSL Copyright

© 1998-2005 The OpenSSL Project. All rights reserved.

This product includes software developed by the OpenSSL Project for use in the OpenSSL Toolkit (<http://www.openssl.org/>).

THIS SOFTWARE IS PROVIDED BY THE OpenSSL PROJECT "AS IS" AND ANY EXPRESSED OR IMPLIED WARRANTIES, INCLUDING, BUT NOT LIMITED TO, THE IMPLIED WARRANTIES OF MERCHANTABILITY AND FITNESS FOR A PARTICULAR PURPOSE ARE DISCLAIMED. IN NO EVENT SHALL THE OpenSSL PROJECT OR ITS CONTRIBUTORS BE LIABLE FOR ANY DIRECT, INDIRECT, INCIDENTAL, SPECIAL, EXEMPLARY, OR CONSEQUENTIAL DAMAGES (INCLUDING, BUT NOT LIMITED TO, PROCUREMENT OF SUBSTITUTE GOODS OR SERVICES; LOSS OF USE, DATA, OR PROFITS; OR BUSINESS INTERRUPTION) HOWEVER CAUSED AND ON ANY THEORY OF LIABILITY, WHETHER IN CONTRACT, STRICT LIABILITY, OR TORT (INCLUDING NEGLIGENCE OR OTHERWISE) ARISING IN ANY WAY OUT OF THE USE OF THIS SOFTWARE, EVEN IF ADVISED OF THE POSSIBILITY OF SUCH DAMAGE.

Loki Library

Copyright © 2001 by Andrei Alexandrescu.

This code accompanies the book: Alexandrescu, Andrei. “Modern C++ Design: Generic Programming and Design Patterns Applied”. Copyright © 2001 Addison-Wesley. Permission to use, copy, modify, distribute and sell this software for any purpose is hereby granted without fee, provided that the above copyright notice appear in all copies and that both that copyright notice and this permission notice appear in supporting documentation.

Helma Project

Copyright © 1999-2004

Helma Project. All rights reserved. THIS SOFTWARE IS PROVIDED “AS IS” AND ANY EXPRESSED OR IMPLIED WARRANTIES, INCLUDING, BUT NOT LIMITED TO, THE IMPLIED WARRANTIES OF MERCHANTABILITY AND FITNESS FOR A PARTICULAR PURPOSE ARE DISCLAIMED. IN NO EVENT SHALL THE HELMA PROJECT OR ITS CONTRIBUTORS BE LIABLE FOR ANY DIRECT, INDIRECT, INCIDENTAL, SPECIAL, EXEMPLARY, OR CONSEQUENTIAL DAMAGES (INCLUDING, BUT NOT LIMITED TO, PROCUREMENT OF SUBSTITUTE GOODS OR SERVICES; LOSS OF USE, DATA, OR PROFITS; OR BUSINESS INTERRUPTION) HOWEVER CAUSED AND ON ANY THEORY OF LIABILITY, WHETHER IN CONTRACT, STRICT LIABILITY, OR TORT (INCLUDING NEGLIGENCE OR OTHERWISE) ARISING IN ANY WAY OUT OF THE USE OF THIS SOFTWARE, EVEN IF ADVISED OF THE POSSIBILITY OF SUCH DAMAGE.

Helma includes third party software released under different specific license terms. See the licenses directory in the Helma distribution for a list of these licenses.

Sarissa

Copyright © 2004 Manos Batsis.

This library is free software; you can redistribute it and/or modify it under the terms of the GNU Lesser General Public License as published by the Free Software Foundation; either version 2.1 of the License, or (at your option) any later version.

This library is distributed in the hope that it will be useful, but WITHOUT ANY WARRANTY; without even the implied warranty of MERCHANTABILITY or FITNESS FOR A PARTICULAR PURPOSE. See the GNU Lesser General Public License for more details.

You should have received a copy of the GNU Lesser General Public License along with this library; if not, write to the Free Software Foundation, Inc., 59 Temple Place, Suite 330, Boston, MA 02111-1307 USA.

ICU

ICU License - ICU 1.8.1 and later COPYRIGHT AND PERMISSION NOTICE Copyright © 1995-2003 International Business Machines Corporation and others. All rights reserved.

Permission is hereby granted, free of charge, to any person obtaining a copy of this software and associated documentation files (the “Software”), to deal in the Software without restriction, including without limitation the rights to use, copy, modify, merge, publish, distribute, and/or sell copies of the Software, and to permit persons to whom the Software is furnished to do so, provided that the above copyright notice(s) and this permission notice appear in all copies of the Software and that both the above copyright notice(s) and this permission notice appear in supporting documentation. THE SOFTWARE IS PROVIDED “AS IS,” WITHOUT WARRANTY OF ANY KIND, EXPRESS OR IMPLIED, INCLUDING BUT NOT LIMITED TO THE WARRANTIES OF MERCHANTABILITY, FITNESS FOR A PARTICULAR PURPOSE AND NONINFRINGEMENT OF THIRD PARTY RIGHTS. IN NO EVENT SHALL THE COPYRIGHT HOLDER OR HOLDERS INCLUDED IN THIS NOTICE BE LIABLE FOR ANY CLAIM, OR ANY SPECIAL INDIRECT OR CONSEQUENTIAL DAMAGES, OR ANY DAMAGES WHATSOEVER RESULTING FROM LOSS OF USE, DATA OR PROFITS, WHETHER IN AN ACTION OF CONTRACT, NEGLIGENCE OR OTHER TORTIOUS ACTION,

ARISING OUT OF OR IN CONNECTION WITH THE USE OR PERFORMANCE OF THIS SOFTWARE. Except as contained in this notice, the name of a copyright holder shall not be used in advertising or otherwise to promote the sale, use or other dealings in this Software without prior written authorization of the copyright holder.

All trademarks and registered trademarks mentioned herein are the property of their respective owners.

Sun's JAXB Implementation – JSDK 1.5 relaxngDatatype.jar 1.0 License

Copyright © 2001, Thai Open Source Software Center Ltd, Sun Microsystems. All rights reserved.

THIS SOFTWARE IS PROVIDED BY THE COPYRIGHT HOLDERS AND CONTRIBUTORS "AS IS" AND ANY EXPRESS OR IMPLIED WARRANTIES, INCLUDING, BUT NOT LIMITED TO, THE IMPLIED WARRANTIES OF MERCHANTABILITY AND FITNESS FOR A PARTICULAR PURPOSE ARE DISCLAIMED. IN NO EVENT SHALL THE REGENTS OR CONTRIBUTORS BE LIABLE FOR ANY DIRECT, INDIRECT, INCIDENTAL, SPECIAL, EXEMPLARY, OR CONSEQUENTIAL DAMAGES (INCLUDING, BUT NOT LIMITED TO, PROCUREMENT OF SUBSTITUTE GOODS OR SERVICES; LOSS OF USE, DATA, OR PROFITS; OR BUSINESS INTERRUPTION) HOWEVER CAUSED AND ON ANY THEORY OF LIABILITY, WHETHER IN CONTRACT, STRICT LIABILITY, OR TORT (INCLUDING NEGLIGENCE OR OTHERWISE) ARISING IN ANY WAY OUT OF THE USE OF THIS SOFTWARE, EVEN IF ADVISED OF THE POSSIBILITY OF SUCH DAMAGE.

W3C IPR SOFTWARE NOTICE

Copyright © 2000 World Wide Web Consortium, (Massachusetts Institute of Technology, Institut National de Recherche en Informatique et en Automatique, Keio University). All Rights Reserved.

Note: The original version of the W3C Software Copyright Notice and License could be found at <http://www.w3.org/Consortium/Legal/copyright-software-19980720>.

THIS SOFTWARE AND DOCUMENTATION IS PROVIDED "AS IS," AND COPYRIGHT HOLDERS MAKE NO REPRESENTATIONS OR WARRANTIES, EXPRESS OR IMPLIED, INCLUDING BUT NOT LIMITED TO, WARRANTIES OF MERCHANTABILITY OR FITNESS FOR ANY PARTICULAR PURPOSE OR THAT THE USE OF THE SOFTWARE OR DOCUMENTATION WILL NOT INFRINGE ANY THIRD PARTY PATENTS, COPYRIGHTS, TRADEMARKS OR OTHER RIGHTS. COPYRIGHT HOLDERS WILL NOT BE LIABLE FOR ANY DIRECT, INDIRECT, SPECIAL OR CONSEQUENTIAL DAMAGES ARISING OUT OF ANY USE OF THE SOFTWARE OR DOCUMENTATION.

CONTENTS

PREFACE

Preface	2
---------------	---

CHAPTER 1

Installing Prerequisites	3
Task Overview	3
Task 1-1: Install IIS or Oracle Application Server	3
Task 1-2: Install JDK 1.5.0 or Higher	4
Task 1-3: Install Oracle 10g Client and ODBC Driver	4
Task 1-4: Install Oracle Business Intelligence Enterprise Edition (OBIEE)	4

CHAPTER 2

Installing Fusion Intelligence for PeopleSoft Enterprise	5
Task Overview	5
Task 2-1: Bundle Resolutions to Apply	5
Task 2-2: Configure Fusion Intelligence for PeopleSoft Enterprise	6

P R E F A C E

PREFACE

This document provides supplemental installation instructions that are required to install Fusion Intelligence for PeopleSoft Enterprise 9.0.

This document supplements the installation and configuration instructions for these systems and applications:

- Oracle Business Intelligence Enterprise Edition, version 10.1.3.2.
- PeopleSoft Enterprise Performance Management, version 9.0.
- PeopleSoft Enterprise or JD Edwards online transaction applications that supply data to PeopleSoft Enterprise Performance Management marts.

Note. Before proceeding with your installation, check Oracle's PeopleSoft Customer Connection website to ensure that you have the latest version of this installation guide.

Installing Fusion Intelligence for PeopleSoft Enterprise applications is grouped into two parts:

- Installing prerequisite components.
- Installing Fusion Intelligence for PeopleSoft Enterprise.

C H A P T E R 1

INSTALLING PREREQUISITES

This chapter discusses how to install various components that are required for using Fusion Intelligence for PeopleSoft Enterprise applications.

Task Overview

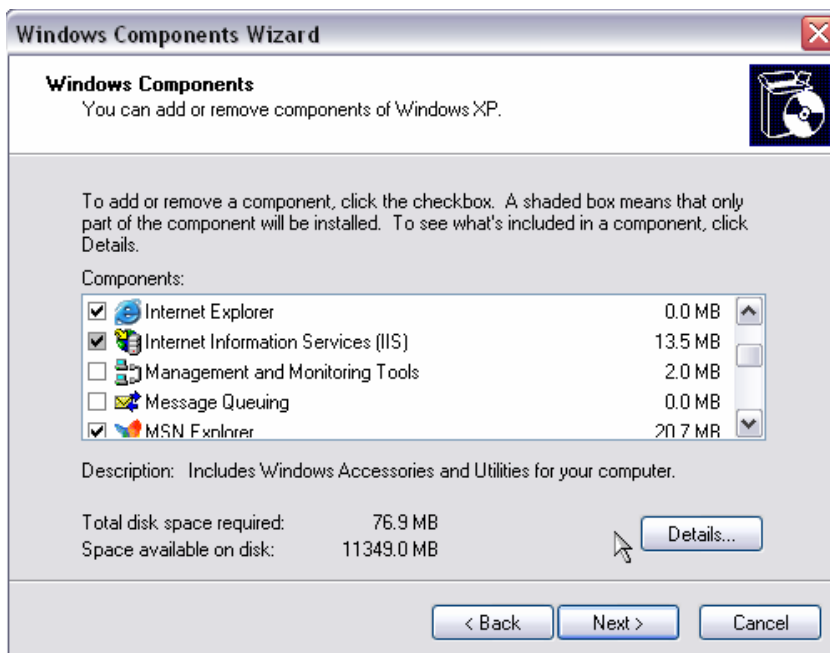
The following table summarizes the tasks in this chapter.

Task No.	Task Name
Task 1-1	Install IIS or Oracle Application Server
Task 1-2	Install JDK 1.5.0 or Higher
Task 1-3	Install Oracle 10g Client and ODBC Driver
Task 1-4	Install Oracle Business Intelligence Enterprise Edition (OBIEE)

Task 1-1: Install IIS or Oracle Application Server

To install IIS:

1. Navigate to Control Panel, Add or Remove Programs, Add/Remove Windows Components.
2. Select Internet Information Services (IIS).
3. Use the Service Pack 4 CD for Windows 2000 and SP2 CD for Windows XP.



[Windows Wizard Components page](#)

Install the Oracle application server from: <http://www.oracle.com/appserver/index.html>.
The OAS version must be 10.1.3.1.0 or greater.

Task 1-2: Install JDK 1.5.0 or Higher

Install the latest JDK from: <http://java.sun.com>.

Task 1-3: Install Oracle 10g Client and ODBC Driver

Install Oracle 10g client and ODBC driver from: <http://www.oracle.com/technology/software/index.html>.

Task 1-4: Install Oracle Business Intelligence Enterprise Edition (OBIEE)

Install Oracle Business Intelligence Enterprise Edition, version 10.1.3.2.

C H A P T E R 2

INSTALLING FUSION INTELLIGENCE FOR PEOPLESOFT ENTERPRISE

Task Overview

The following table summarizes the tasks in this chapter.

Task No.	Task Name
Task 2-1	Bundle Resolutions to Apply
Task 2-2	Configure Fusion Intelligence for PeopleSoft Enterprise

Task 2-1: Bundle Resolutions to Apply

You must apply the bundle resolutions that are listed in this table:

Product Line	Release	Bundle Name	Post Date	State	Resolution ID
EPM	9	EPM - BG 9.0 Bundle #1	09/21/2006	Posted	680992
EPM	9	EPM - BG 9.0 Bundle #2	11/02/2006	Posted	687934
EPM	9	EPM - BG 9.0 Bundle #3	12/14/2006	Posted	691822
EPM	9	EPM - CRM Warehouse 9.0 Bundle 1	09/21/2006	Posted	681036
EPM	9	EPM - Campus Solutions Warehouse 9.0 Bundle 3	12/14/2006	Posted	692826
EPM	9	EPM - EW 9.0 Common Objects and Maps Bundle 1	09/21/2006	Posted	680994
EPM	9	EPM - EW 9.0 Common Objects and Maps Bundle 2	11/02/2006	Posted	687104

Product Line	Release	Bundle Name	Post Date	State	Resolution ID
EPM	9	EPM - EW 9.0 Common Objects and Maps Bundle 3	12/14/2006	Posted	692828
EPM	9	EPM - EW Foundation 9.0 Bundle 1	09/20/2006	Posted	681031
EPM	9	EPM - EW Foundation 9.0 Bundle 2	11/02/2006	Posted	687103
EPM	9	EPM - EW Foundation 9.0 Bundle 3	12/14/2006	Posted	692922
EPM	9	EPM - Financials Warehouse 9.0 Bundle 1	09/21/2006	Posted	681032
EPM	9	EPM - Financials Warehouse 9.0 Bundle 2	11/02/2006	Posted	687098
EPM	9	EPM - Financials Warehouse 9.0 Bundle 3	12/14/2006	Posted	692816
EPM	9	EPM - GC 9.0 Bundle #1	09/21/2006	Posted	680993
EPM	9	EPM - HCM Warehouse 9.0 Bundle 1	09/21/2006	Posted	681035
EPM	9	EPM - HCM Warehouse 9.0 Bundle 2	11/02/2006	Posted	687101
EPM	9	EPM - HCM Warehouse 9.0 Bundle 3	12/14/2006	Posted	692813
EPM	9	EPM - Supply Chain Warehouse 9.0 Bundle 1	09/21/2006	Posted	681033
EPM	9	EPM - Supply Chain Warehouse 9.0 Bundle 2	11/02/2006	Posted	687100
EPM	9	EPM - Supply Chain Warehouse 9.0 Bundle 3	12/14/2006	Posted	692824

Task 2-2: Configure Fusion Intelligence for PeopleSoft Enterprise

To configure Fusion Intelligence for PeopleSoft Enterprise:

Note. For information on setting up security, refer to *Fusion Intelligence PeopleBook for PeopleSoft Enterprise 9.0 and JD Edwards EnterpriseOne*, "Setting Up Security."

- Stop the following OBIEE Services:
 - Oracle BI Java Host
 - Oracle BI Presentation Server
 - Oracle BI Server
- Unzip the EPMMaster.zip file from the setup directory where you installed the Fusion Intelligence for PeopleSoft Enterprise 9.0 CD. Copy the EPMMaster.rpd file to the OracleBI\server\Repository directory.
- Update the NQSConfig.INI file located in the OracleBI\server\Config directory. Edit the Repository section with the EPMMaster.rpd file. See the example below:

[REPOSITORY]

Star = EPMMaster.rpd, DEFAULT;

4. Unzip the EPMMaster_Webcat.zip file from the setup directory where you installed the Fusion Intelligence for PeopleSoft Enterprise 9.0 CD. Copy the EPMMaster webcat folder to the OracleBIData\web\catalog directory.
5. Update the instanceconfig.xml file located in the OracleBIData\web\config directory. Edit the catalog path to point to the EPMMaster webcat folder. See the example below:

```
<CatalogPath>C:/OracleBIData/web/catalog/EPMMaster</CatalogPath>
```
6. Open the EPMMaster.rpd file using the Oracle BI Administration Tool. Launch the tool by navigating to Start, Programs, Oracle Business Intelligence, Administration. Open offline by navigating to File, Open, Offline and selecting the EPMMaster.rpd file located in OracleBI\server\Repository. Enter the User: Administrator and Password: Administrator.
7. Using the Oracle BI Administration Tool, expand the Enterprise Warehouse in the Physical layer column. Update the MDW Connection Pool and the MDW InitBlock Connection Pool with the Data Source Name, User Name, and Password for your EPM 9 database. Save the changes.

Note. For an Oracle database, you must use the Call Interface default value of OCI 8i/9i for this release of Fusion Intelligence for PeopleSoft Enterprise.

8. Unzip the OBIEE.zip file from the setup directory where you installed the Fusion Intelligence for PeopleSoft Enterprise 9.0 CD. Using the Application Designer for your EPM 9 database, copy the OBIEE project into your database. Navigate to Tools, Copy Project, From File, and select the OBIEE project. Select All and click Copy. Build the project by selecting Create Tables and Create Views as the Build Options.
9. Unzip the EPM90_BI2006_SAMPLE_DATA.zip and Security Config.zip from the setup directory where you installed the Fusion Intelligence for PeopleSoft Enterprise 9.0 CD. Using Data Mover, run the EPM90_BI2006_SAMPLE_DATA_IMP.dms and md_imp.dms to import sample data.
10. Sign onto your EPM 9 database using PIA and navigate to EPM Foundation, Foundation Metadata, Metadata Creation and Editing, Record Metadata. Compile the metadata by clicking the Compile button for the following table names:

D_INSTITUTION
 D_INSTN_SJT
 D_BUSINESS_UNIT
 D_BUS_UNIT_SJT
 D_ACAD_GRP
 D_ACAD_GRP_SJT
 D_INV_ITEM
 D_COMMODITY_SJT

11. Update the SQL statements in the EPM 9 database, by using any SQL tool, to point to the source OLTP Enterprise databases.

```
UPDATE PS_SRC_CONFIG
SET URI = '<PS_HOME FOR HCM>'
WHERE SRC_SYS_ID='HCM'
```

```
UPDATE PS_SRC_CONFIG  
SET URI = '<PS_HOME FOR FSCM>'  
WHERE SRC_SYS_ID='FSCM'
```

Do not include a forward slash at the end. For example:

```
UPDATE PS_SRC_CONFIG  
SET URI = 'HTTP://ADNTAS42.PEOPLESOFT.COM:6300/PSP/EM_HC890TS1_TS091824'  
WHERE SRC_SYS_ID='HCM'
```

12. Restart the following OBIEE Services:

- a) Oracle BI Server
- b) Oracle BI Presentation Server
- c) Oracle BI Java Host