

# Retek® Integrator 10.4



## Release Notes



The software described in this documentation is furnished under a license agreement, is the confidential information of Retek Inc., and may be used only in accordance with the terms of the agreement.

No part of this documentation may be reproduced or transmitted in any form or by any means without the express written permission of Retek Inc., Retek on the Mall, 950 Nicollet Mall, Minneapolis, MN 55403, and the copyright notice may not be removed without the consent of Retek Inc.

Information in this documentation is subject to change without notice.

Retek provides product documentation in a read-only-format to ensure content integrity. Retek Customer Support cannot support documentation that has been changed without Retek authorization.

**Corporate Headquarters:**

Retek Inc.  
Retek on the Mall  
950 Nicollet Mall  
Minneapolis, MN 55403  
  
888.61.RETEK (toll free US)  
+1 612 587 5000

Retek® Integrator™ is a trademark of Retek Inc.

Retek and the Retek logo are registered trademarks of Retek Inc.

**European Headquarters:**

Retek  
110 Wigmore Street  
London  
W1U 3RW  
United Kingdom  
  
Switchboard:  
+44 (0)20 7563 4600  
  
Sales Enquiries:  
+44 (0)20 7563 46 46  
Fax: +44 (0)20 7563 46 10

This unpublished work is protected by confidentiality agreement, and by trade secret, copyright, and other laws. In the event of publication, the following notice shall apply:

©2003 Retek Inc. All rights reserved.

All other product names mentioned are trademarks or registered trademarks of their respective owners and should be treated as such.

Printed in the United States of America.



## ***Customer Support***

### **Customer Support hours:**

Customer Support is available 7x24x365 via e-mail, phone, and Web access.

Depending on the Support option chosen by a particular client (Standard, Plus, or Premium), the times that certain services are delivered may be restricted. Severity 1 (Critical) issues are addressed on a 7x24 basis and receive continuous attention until resolved, for all clients on active maintenance.

### **Contact Method    Contact Information**

**Internet (ROCS)**    [www.retek.com/support](http://www.retek.com/support)  
Retek's secure client Web site to update and view issues

**E-mail**    support@retек.com

**Phone**    US & Canada: 1-800-61-RETEK (1-800-617-3835)  
World: +1 612-587-5800  
EMEA: 011 44 1223 703 444  
Asia Pacific: 61 425 792 927

**Mail**    Retek Customer Support  
Retek on the Mall  
950 Nicollet Mall  
Minneapolis, MN 55403

### **When contacting Customer Support, please provide:**

- Product version and program/module name.
- Functional and technical description of the problem (include business impact).
- Detailed step by step instructions to recreate.
- Exact error message received.
- Screen shots of each step you take.



## Overview

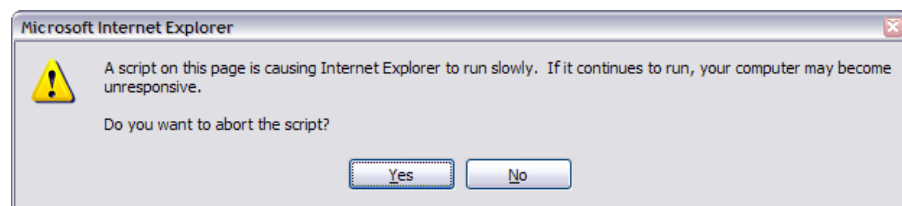
The development is aimed at reducing the number of files downloaded into Integrator when accessing folders.

The enhancements have been applied to base. This version is released on March 20th, 2003.

**Note:** There was no Retek Integrator 10.3 release. To keep the applications aligned, this release is named 10.4

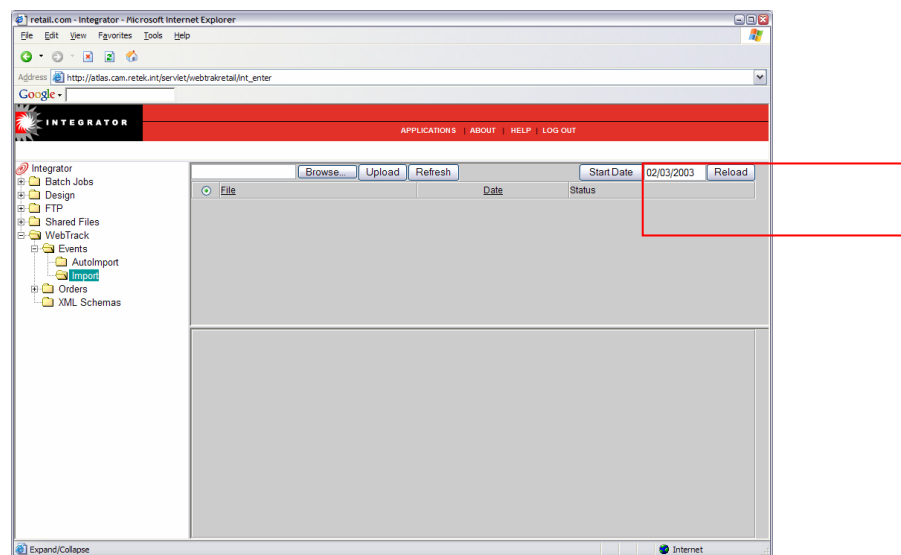
## Functional overview

When you download files into a folder, all files dating back from the year 1900 are transferred. If the files have not been purged, this process could take up to five minutes. Microsoft Internet Explorer prompts you of this:

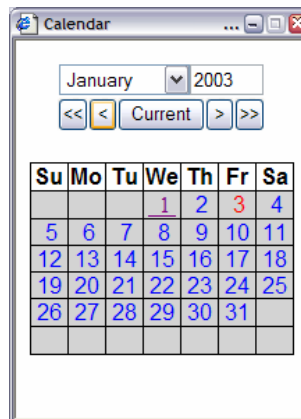


With the Macintosh, this warning message is not displayed. It may appear that the system has “crashed.”

The change made in this release sets a default start date for downloading data. The default will be set to four weeks into the past of today’s date. New groups of buttons have been added to enable you to extend the date range outside the four weeks if required.



The date displayed will be today's date less four weeks. This will remain in black if the default is used. To change the default, click on the Start Date button. A date wizard will appear. Select the day/date. Additional buttons in the wizard allow you to scroll through months and years. If a manual entry for year is required, enter the year (yyyy) into the year field and press Enter to confirm. Click OK to confirm new start date.



The newly selected date will appear in the date field in Red. Click Reload to bring back the files.

**Note:** If you select the date manually as today minus four weeks, the date field will remain red showing that the date has been manually selected.

The default date setting will apply to all folders, that is, if you manually select a date in one folder, then select another folder, the default date in the new folder will be used, not the manually selected date.