

Understanding the External App My Yahoo Portlet Using PDK URL Services

Last Updated
April 17, 2001

Objective

After completing this lesson, you should be able to:

- Understand PDK URL Services Framework.
- Understand usage of URL Services tags
- Understand process of creating portlets, which provide single sign on behavior for affiliated external applications.
- Understand how Filtering works in URL services framework

This exercise is based on JPDK 1.5 (April 2001 release), which is available from <http://technet.oracle.com/products/iportal/files/pdk/jpdk/jpdk13.zip>

Overview

To simplify developing portlets in any language, the Oracle Portal Development Kit introduces PDK Services for URL Rendering (PDK URL Services) with PDK 1.5 available April 01, 2001.

The PDK Services for URL Rendering allow developers to take any application written in any language and easily create integrated portlets. The URL Services takes the URL of an application, parses the content, and uses the JPDK framework to create a portlet.

The increased flexibility of the URL Services offers many advantages:

- Eliminates the learning curve involved for Developers integrating their services with Oracle 9iAS Portal.
- Ability to use existing web sites and content.
- No requirement to learn or use the Oracle 9iAS Portal APIs.
- Allow developers not familiar with PL/SQL, Java, Java Servlets, JSPs, or XML to easily integrate with Oracle 9iAS Portal.
- Allows multiple languages rendering within a single portlet.
- Allows portlet definition within a single file.
- Provides single sign on behavior for portlets without any coding.
- Provides flexible filtering capabilities through rich set of tags.

Lesson Overview

By following the steps provided, and working through the examples, you will become familiar with the fundamental pieces of the portlet programming model, and create an authenticated URL services portlet which is based on the URL services framework.

The steps involved in the creation of My Yahoo Portlet are:

1. Setup and Crosscheck the JSDK environment
2. Modify the provider.xml file
3. Setup your Apache environment for running URL Services web provider
4. Create External Application In Oracle Portal For Yahoo applications.
5. Register the Web Provider through Oracle Portal
6. Add the Portlets to the Portal Page.
7. Test the Yahoo Portlets.

At the end of lesson you would have created a page with two Yahoo portlets Yahoo finance portfolio and Yahoo weather as shown in fig below:

The screenshot shows a web browser window titled "MyYahoo - Microsoft Internet Explorer". The address bar shows a URL from oracle.com. The page content includes a "Yahoo Finance Portlet" titled "Portfolio for uriservices - My First Portfolio". Below the title, there are links for "Views: Basket (edit)", "DayWatch", "Performance", "Fundamentals", "Real-time BGN", "Detailed", and "[Create New View]". The main content area displays a table of stock data for Wednesday, March 28, 2001, 3:15pm ET, with U.S. Markets Closed. The table has columns for Symbol, Last Trade, Change, Volume, More Info, and Trade Now. The data rows are for NYSE, NASDAQ, GE, ORCL, and SUNW. Below the table, there is a note about quote delays and a link to "Select a Symbol for a detailed quote". At the bottom of the page, there is a "Yahoo Weather Portlet" titled "Weather" showing the weather for Chicago, IL (21.42 F), London, UK (40.20 F), and Teddington City, CA (50.15 F). The page footer includes a URL from oracle.com and a taskbar at the bottom with various icons and the system clock showing 06:22 PM.

Symbol	Last Trade	Change	Volume	More Info	Trade Now
NYSE	4:03PM 9785.35	-162.19 -1.63%	N/A	Chart, News, Company Info	N/A
NASDAQ	5:15PM 1854.13	-118.13 -5.99%	N/A	Chart, News	N/A
GE	4:02PM 41.55	-0.36 -0.86%	25,709,100	Chart, News, Mgmt Profile, Research, Insider Options	Change Bid/Ask
ORCL	4:01PM 15.1	-1.55 -9.31%	46,401,600	Chart, News, Mgmt Profile, Research, Insider Options	Change Bid/Ask
SUNW	4:00PM 15.89	-1.56 -8.96%	54,805,900	Chart, News, Mgmt Profile, Research, Insider Options	Change Bid/Ask

Task 1: Setup and Crosscheck the JPDK environment

Oracle Portal Development Kit

The Oracle Portal Development Kit (PDK) is the pre-eminent resource for developing portlets. It contains utilities and articles that assist in every step of portlet development. The PDK is updated every month to provide you with the latest tools and techniques. You will need to download the latest PDK from <http://technet.oracle.com/products/iportal/index2.htm?Info&/products/iportal/files/pdk/index.html>

Installing the PDK Services for Java (JPDK)

The PDK Services for Java include the tools and documentation to build Web Portlets. Included in the PDK Services for Java is the provider framework. Your portlets will use this framework and build upon it. You will perform the following steps to install and configure the JPDK.

Web Provider Requirements For Running This Example

- Oracle HTTP Server (1.0.2.1) – (Apache 1.3.1 with Jserv Installed)
- Oracle PDK 1.5 pre-installed and configured.

The Portal version needed is 3.0.8.9.8 or higher (That is 9iAS 1.0.2.1).

This example assumes that Oracle Portal part Oracle 9iAS is running on remote server.

But you can also have web provider deployed on same web server as 9iAS 1.0.2.1. In that case you will not need separate installation of Oracle Http Server.

Configure the Web Provider Framework

1. Stop your listener
2. In the **jserv.properties** file, add the following to the section containing the wrapper.classpath statements:

```
# JPDK classpath
wrapper.classpath=d:\<jpdk path from download>\jpdk\lib\provider.jar
```

Note: replace the path above with your path

Configure the URL Services

Download URLservices.zip. Unzip it under jpdk.

- 1 In the jserv.properties file, add the following to the section containing the wrapper.classpath statements

```
# URL services classpath
```

```
wrapper.classpath=d:\<jpdk path >\urlservices\lib\urlservices.jar
wrapper.classpath=d:\<jpdk path >\urlservices\lib\Tidy.jar
wrapper.classpath=d:\<jpdk path >\urlservices\lib\http_client.jar
```

Note: replace the path above with your path

- 2 Open the **zone.properties** file. This document uses the root zone which has a virtual path of "/servlets". You will want to add your path. Find the repositories statement and add your path as follows:

```
repositories=D:\oracle\ora81\Apache\Jserv\servlets;<jpdk path
from download>\lib\urlservices.jar
```

Task 2: Create/Modify the provider.xml

1. In this section you will create a new provider.xml. Creating a new provider.xml will allow you to add new portlets without affecting Web Providers already registered with Oracle 9iAS Portal.
 - a. Open a text editor.
 - b. Add the following entry to the file. **Note:** If you plan to add additional portlets in the future, verify that your portlet ID is unique for this provider.

You may use the provided provider.xml file as base.
Review the file contents.

```
<?xml version="1.0" encoding="UTF-8"?>
<?providerDefinition version="2.0"?>
<provider class="oracle.portal.provider.v1.http.DefaultURLProvider" session="true">
  <authentication class="oracle.portal.provider.v1.http.AuthenticationNodeHandler">
    <authType>ExternalApp</authType>
    <loginURL>http://login.yahoo.com/</loginURL>
    <requestType>POST</requestType>
    <userFieldName>login</userFieldName>
    <userPwdName>passwd</userPwdName>
    <fieldName>Submit</fieldName>
  </authentication>
  <proxyInfo class="oracle.portal.provider.v1.http.ProxyInfoNodeHandler">
    <proxyHost>www-proxy.us.oracle.com</proxyHost>
```

```
</proxyInfo>
```

```
<portlet class="oracle.portal.provider.v1.http.PortletNodeHandler" version="1" >
```

```
  <id>1</id>
```

```
  <name>Yahoo Finance Portlet</name>
```

```
  <title>Yahoo Finance Portlet</title>
```

```
  <description>Portlet is to test url services using finance.yahoo.com</description>
```

```
  <timeout>100</timeout>
```

```
  <timeoutMessage>yahoo timed out</timeoutMessage>
```

```
  <showEdit>true</showEdit>
```

```
  <showEditDefault>>false</showEditDefault>
```

```
  <showPreview>>false</showPreview>
```

```
  <showDetails>>false</showDetails>
```

```
  <hasHelp>true</hasHelp>
```

```
  <hasAbout>>false</hasAbout>
```

```
  <acceptContentType>text/html</acceptContentType>
```

```
  <registrationPortlet>>false</registrationPortlet>
```

```
  <renderer class="oracle.portal.provider.v1.RenderManager">
```

```
    <renderContainer>true</renderContainer>
```

```
    <renderCustomize>>false</renderCustomize>
```

```
<showPage class="oracle.portal.provider.v1.http.URLPageRenderer">
```

```
  <contentType>text/html</contentType>
```

```
  <pageUrl>http://finance.yahoo.com/p?v&k=pf_1&d=v1</pageUrl>
```

```
  <accessControl>public</accessControl>
```

```
  <filterType>text/html</filterType>
```

```
  <filter class="oracle.portal.provider.v1.http.HtmlFilter">
```

```
    <headerTrimTag>&lt;table border=0 width=100% cellpadding=4 cellspacing=0&gt;</headerTrimTag>
```

```
      <footerTrimTag>Yahoo! Finance Home&lt;/a&gt;</footerTrimTag>
```

```
      <useAuthLinks>>false</useAuthLinks>
```

```
      <baseHref>http://finance.yahoo.com/</baseHref>
```

```
      <convertTarget>true</convertTarget>
```

```
    </filter>
```

```
</showPage>
```

```
<editPage class="oracle.portal.provider.v1.http.URLPageRenderer">
```

```
  <contentType>text/html</contentType>
```

```
  <accessControl>public</accessControl>
```

```
<pageUrl>http://edit.finance.yahoo.com/config/set_quotes?.done=http://finance.yahoo.com/p&.list_portf=1&port_edit&.src=quote&.key=pf_1&.exchange=us&.smallfont=0&.detailed=0</pageUrl>
```

```
  <filterType>text/html</filterType>
```

```
  <filter class="oracle.portal.provider.v1.http.HtmlFilter">
```

```

        <useAuthLinks>false</useAuthLinks>
        <convertTarget>true</convertTarget>
    </filter>
</editPage>

<helpPage class="oracle.portal.provider.v1.http.URLPageRenderer">
    <accessControl>public</accessControl>
    <contentType>text/html</contentType>
    <pageUrl>http://help.yahoo.com/help/fin/</pageUrl>
    <filterType>text/html</filterType>
    <filter class="oracle.portal.provider.v1.http.HtmlFilter">
        <baseHref>http://help.yahoo.com/</baseHref>
        <useAuthLinks>false</useAuthLinks>
    </filter>

</helpPage>

</renderer>

</portlet>

<portlet class="oracle.portal.provider.v1.http.PortletNodeHandler" version="1" >

    <id>2</id>
    <name>Yahoo Weather Portlet</name>
    <title>Yahoo Weather Portlet</title>
    <description>This portlet is to test url services using weather.yahoo.com</description>
    <timeout>100</timeout>
    <timeoutMessage>yahoo timed out</timeoutMessage>
    <showEdit>false</showEdit>
    <showEditDefault>false</showEditDefault>
    <showPreview>false</showPreview>
    <showDetails>false</showDetails>
    <hasHelp>false</hasHelp>
    <hasAbout>false</hasAbout>
    <acceptContentType>text/html</acceptContentType>
    <registrationPortlet>false</registrationPortlet>
    <renderer class="oracle.portal.provider.v1.RenderManager">
        <renderContainer>true</renderContainer>
        <showPage class="oracle.portal.provider.v1.http.URLPageRenderer">
            <contentType>text/html</contentType>
            <pageUrl>http://weather.yahoo.com/</pageUrl>
            <accessControl>public</accessControl>
            <filterType>text/html</filterType>
            <filter class="oracle.portal.provider.v1.http.HtmlFilter">
                <headerTrimTag>&lt;!--#ymod cmd="weather#moduleweather"--></headerTrimTag>
                <footerTrimTag>Add to My Yahoo!&lt;/a>&lt;/font>&lt;/footerTrimTag>
            </filter>
        </showPage>
    </renderer>
</portlet>

```

```
<baseHref>http://weather.yahoo.com/</baseHref>
<convertTarget>true</convertTarget>
</filter>
</showPage>
</renderer>

</portlet>
</provider>
```

Notes:

- i. Please refer to “[Understanding Provider.xml for URL Services](#)”, for detailed explanation of various tags
- ii. You can use your own MyYahoo account or create a [new My Yahoo account](#) for creating this portlet. If you are using your own account, take care of following for Finance Portlet.
 - **pageUrl tag** for Show mode of finance portlet refers to finance.yahoo.com URL for your login. In our case URL was http://finance.yahoo.com/p?v&k=pf_1
In XML file we cannot use & character, we have to replace it with escape character &. That's why the above URL when entered in provider.xml got changed to http://finance.yahoo.com/p?v&k=pf_1&d=v1
 - **editUrl tag** refers to customize page of finance portfolio. Got to your finance page. Click on edit link next to your portfolio. In our case portfolio name is **My First Portfolio**. This takes to URL http://edit.finance.yahoo.com/config/set_quotes?.done=http://finance.yahoo.com/p&.list_portf=1&port_edit&.src=quote&.key=pf_1&.exchange=us&.smallfont=0&.detailed=0
All occurrences of & in above URL were replaced with &
 - **helpUrl** refers to help page for My Yahoo finance. This URL is <http://help.yahoo.com/help/fin/>
 - **filter tags** are optional section of renderer tags. These tags for removing contents from header

and footer section of output page being produced. If the contents being rendered by portlet are appropriate to the needs of user, then you do not need to add these tags. Also in XML file **< and >** are invalid characters so in filter tags we replace **< with <** and **> with >**;

- **headerTrimTag** trims all contents of HTML header before the first occurrence of value of headerTrimTag.
- **footerTrimTag** trims all contents of HTML header after the first occurrence of value of footerTrimTag.
- To use **headerTrim** and **footerTrimTag** effectively, first open the page whose contents you are trying to access in any browser, decide the region of contents you want in a browser. To trim all the contents before the start of region, identify a unique value of headerTrimTag. Similarly to trim all contents after the region, identify a unique value of footerTrimTag.

- iii. You can have as many portlets in a provider.xml as you like. Make sure to maintain unique value for <id>. Second portlet is weather portlet specific to you're My Yahoo profile.

c Save and close the file. Make sure to name the file provider.xml".

2. Place the file in any directory other than the location where the JPDK provider.xml resides. Remember the location. For example:
C:\myyahoo\provider.xml
3. If you have made any changes to provider.xml, make sure it is a valid XML file. In order to check validity of provider.xml, open this file in Internet Explorer 5.0 or above. If XML file opens successfully it means it is a well formed XML document. Otherwise IE would give an error saying, "**The XML page cannot be displayed**". It also lists the line number where error is expected.

Task 3: Setup & Test your Apache environment for running URL services web provider

- 1 Open the **zone.properties** file. This document uses the root zone which has a virtual path of `"/servlets"`.
- 2 Find the **Servlet Aliases** section in the zone.properties file and add the alias that points to the Provider Adapter:

```
servlet.myyahoo.code=oracle.portal.provider.v1.http.HttpProvider
```

- 3 Find the **Aliased Servlet Init Parameters** section, add the initial arguments needed by the currency portlet. This points to the location of the provider.xml file.

```
servlet.myyahoo.initArgs=provider_root=<location of all myYahoo provider.xml file>, sessiontimeout=1800000
```

Note: the sessiontimeout must match the session.timeout setting located in the zone.properties of your Apache listener. Both settings are specified in milliseconds.

- 4 **Save** and close the zone.properties file.
- 5 The next step is to test that you have properly setup the your web portlet on the listener. Open your browser and go to the following URL:

```
http://<hostname>/servlets/myyahoo
```

- 6 You should receive a test page informing you that the portlet worked as indicated in figure



Task 4: Configure & Test Login Server For My Yahoo External Application In Oracle Portal

External applications in Oracle Portal environment are those which retain their own usernames and passwords, and do not delegate responsibility for authenticating users to the Login Server. They have not been developed or modified to work within the SSO framework. A typical external application might be one developed or deployed by a third party, such as a portal website which requires username and password for access to custom services like email.

Examples of External Applications can be Web based services like MyYahoo, Hotmail etc.

This section walks through how to configure Login Server on Oracle Portal for single sign on access to a sample external application, specifically MyYahoo!.

1. Login to Portal as an administrator. If you have just installed Portal, the default administrator username "portal30" and password "portal30" should work.



2. Click on the **"Administer"** tab. The Portal Administration page should pop up. Scroll down the page; under the "Services" heading you will find a link to the **"Login Server Administration"** page. Click on this link; the Login Server Administration page will pop up.

Services

[Global Settings](#)

Establish default home page, default style, proxy server settings, activity log interval, Login Server settings and logout behavior, and portlet timing at the system level.

[Listener Gateway Settings](#)

Adjust listener and gateway settings.

[Log Registry Administration](#)

Administer log registry which determines what log requests result in log entries.

[Search Settings](#)

Establish basic search features for Oracle and Internet search engines, and advanced InterMedia Text search features including gists and theme searches.

[Login Server Administration](#)

Administer users, configure partner and external applications for authentication through the Login Server, and edit the Login Server configuration.

- 3 Once you are on the Login Server Administration page, click on **"Administer External Applications"**.

Login Server Administration

[Administer Users](#)
Maintain user accounts for Single Sign-On. Specify user passwords, email, login timeframes and Login Server privilege levels.

[Edit Login Server Configuration](#)
Maintain the configuration information for the Login Server. These configuration settings include the Login Server's password policy settings and authentication mode.

[Administer Partner Applications](#)
Create or edit configuration information for partner applications. Partner applications are applications that have delegated authentication processing to the Login Server. Configuration settings for partner applications include application URLs, valid login timeframes, and application administrator contact information.

[Administer External Applications](#)
Create or edit configuration information for external applications. External applications are web-based applications that perform their own user name/password authentication through HTML login forms. The Login Server will login to these applications on behalf of the user. Configuration settings for external applications include the application login URL, fieldnames used for the user name and password fields, and the form submission method.

ORACLE®
Oracle Portal Version: 3.0.6.6.3

- 4 This will display a list of external applications already configured, including Hotmail and OracleMobile.
- 5 To add MyYahoo, click on the "**Add External Application**" link. The Create External Application page will pop up.
- 6 Under External Application Login, you will need to enter the name of the application and some other information:

Create External Application - Netscape

File Edit View Go Communicator Help

Back Forward Reload Home Search Netscape Print Security Stop

Bookmarks Location <http://www.fugent.com> 3690/pls/portal8_css/PORTAL8_550/www/ot_app_admin/administrator_login

noOracle Shift TP&S Oracle.html Oracle Single S Partner Account DoDM/F&Q Login Client Side Sta

External Application

Create External Application

Apply OK Cancel

External Application Login

Enter the application name, the login URL, and the user name and password HTML field names used by the application's login form. The login URL is typically the submit action of the application's login form. It will be used in conjunction with the user name and password field names to perform a single sign-on login into this application. The login URL as well as the user name and password field names should be determined by inspecting the source of the application's standard login form.

Application Name:

Login URL:

User Name/ID Field Name:

Password Field Name:

Authentication Method

Select the authentication method used by this application. The POST method submits the credentials with the body of the form. The GET method submits the login credentials as part of the login URL.

Type of Authentication Used:

Additional Fields

Type the names and values of any additional fields that are submitted with the login form of the external application.

Document Date:

Start Dial-Up Network Inbox - Microsoft Exploring - D:\ Microsoft Word D:\papers_w... Create Exte...

11:37 AM

- a) In the "**Application Name**" box, type the name of the external application as you want it to appear to the user (e.g., MyYahoo!).
- b) In the "**Login URL**" box, enter the URL for the login page of the external application. You can find this by going to the external application login page, typing control-U to show the html source for page, and scrolling through the page until you find the login URL. In the case of MyYahoo!, this value is **<http://login.yahoo.com>**

c) In the "**User Name/ID Field Name**" box, type the name of the login field in the application login page. You can obtain this from the login page source as in step 2. In the case of MyYahoo! the value of this field is **login**.

d) In the "**Password Field Name**" type the name of the password field in the application login page. You can obtain this field from the login page source as in step 2. In the case of MyYahoo! the value of this field is **passwd**.

e) Under "**Authentication Method**" specify whether the application uses GET or POST authentication. MyYahoo! uses **POST**.

Authentication Method

Select the authentication method used by this application. The POST method submits the credentials with the body of the form. The GET method submits the login credentials as part of the login URL.

Type of Authentication Used: **POST**

Additional Fields

Type the names and values of any additional fields that are submitted with the login form of the external application.

Field Name	Field Value
Submit	Sign In

Copyright © 2000, Oracle Corporation. All Rights Reserved.

f) "**Additional Fields**" may be required if the application submits additional fields with the login form. MyYahoo! Needs one additional field.


Field Name = Submit

Field Value = Sign In

- 7 Once you have completed these steps, click "**OK**" to add the external application.

External Applications

Administer External Applications



Add External Application

Add an external application that supports HTML form-based authentication. The settings configured here include the application login URL, fieldnames used for the user name and password fields, and the form submission method.


Edit/Delete External Applications


Modify an external application's configuration or delete it from the list of external applications. You may click on an application link to test the login to that external application.

Edit


Delete


Application Name







[E-Travel](#)







[Files Online](#)







[Global Mail Preferences](#)







[Internet Sales Division Web2000](#)







[Marketing Online](#)





[My Yahoo](#)





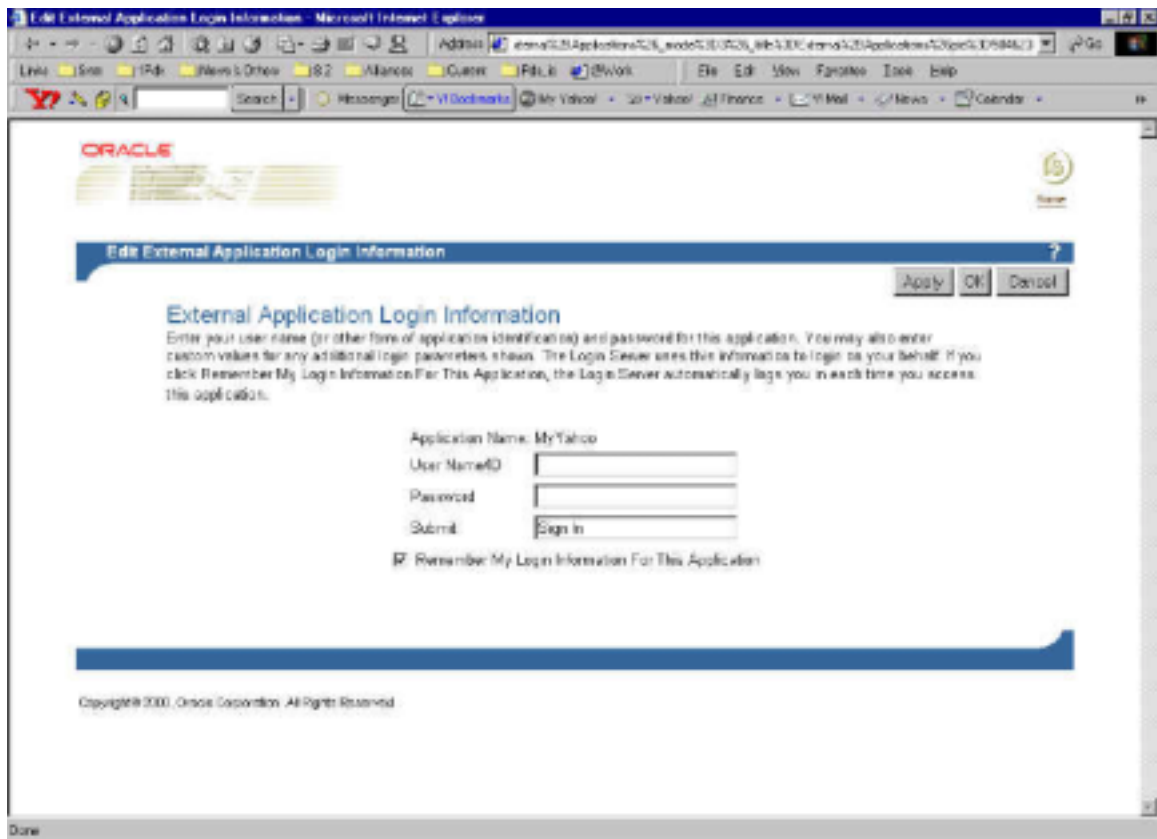
[Oracle Benefits](#)

Test the External Application

You can then test whether the application worked successfully by clicking on the link to the application (e.g. MyYahoo!) under "**Edit/Delete External Applications on the External Applications page**" (Note: click on the name of the application, not on the edit or delete buttons).

The Login to <application name> (Here Login- My yahoo) page should then pop up.

Enter a valid application username and password in the "**User Name/ID**" and "**Password**" boxes,



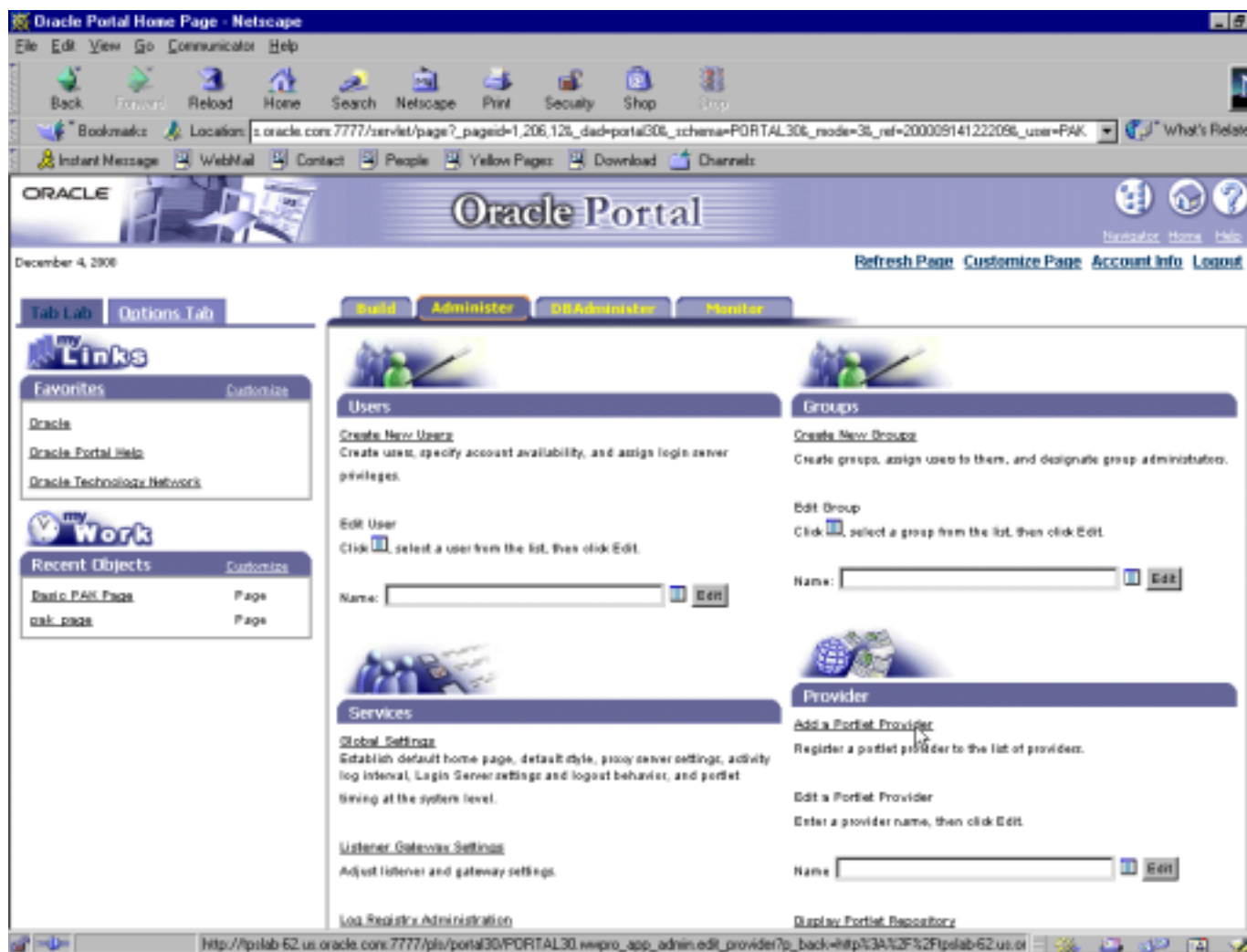
But for our application test, keep the checkbox unchecked

This opens up a new browser window with My Yahoo user logged in.

Task 5: Register the Web Provider through Oracle Portal

In order to execute your web portlet within a Portal page you will first need to register the Web Portlet Provider.

1. Type the URL to go to the main Oracle Portal page.
2. Click the **login** link to login.
3. Specify the **username** and **password** for an Oracle Portal Administer.
4. On the main Portal page, click on the **Administer** tab
5. Click on the **Add a Portlet Provider** link under the Local Provider portlet.



6. On the Create Provider page, enter the following information:
 - **Name:** MyYahoo (Name must be unique)

- **Provider ID:** leave blank, it will automatically generate an ID
- **Timeout:** 1000
- **Timeout Message:** My Yahoo Application Timed Out
- **Implementation Style:** Web
- **Register on Remote Nodes:** No

ORACLE

Edit Provider - sdunejs_my@yahoo

Refresh Provider Done Apply OK Cancel

Provider Information

Enter a unique name for the provider, the timeout time (in seconds) and a timeout message. The timeout message is presented to the user when a portal takes longer than the specified time to execute.

Oracle Portal Node: WWW_30896_50462

Name:

Display Name:

Provider ID:

Hint: The provider ID is used to associate portals to a page. Updating the provider ID may invalidate existing portal references. Use this field to assign a known provider ID. Do this when moving the provider from one portal node to another.

Timeout: seconds

Timeout Message:

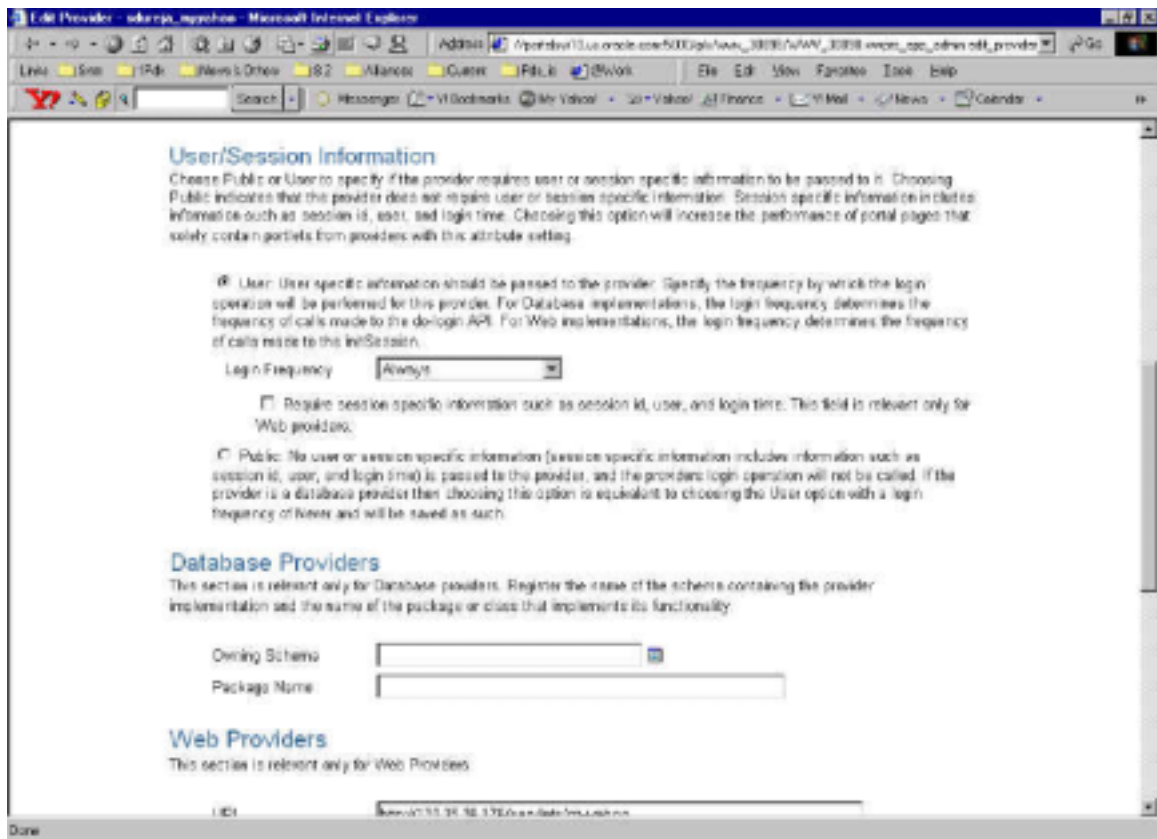
Implementation Style:

Register On Remote Nodes:

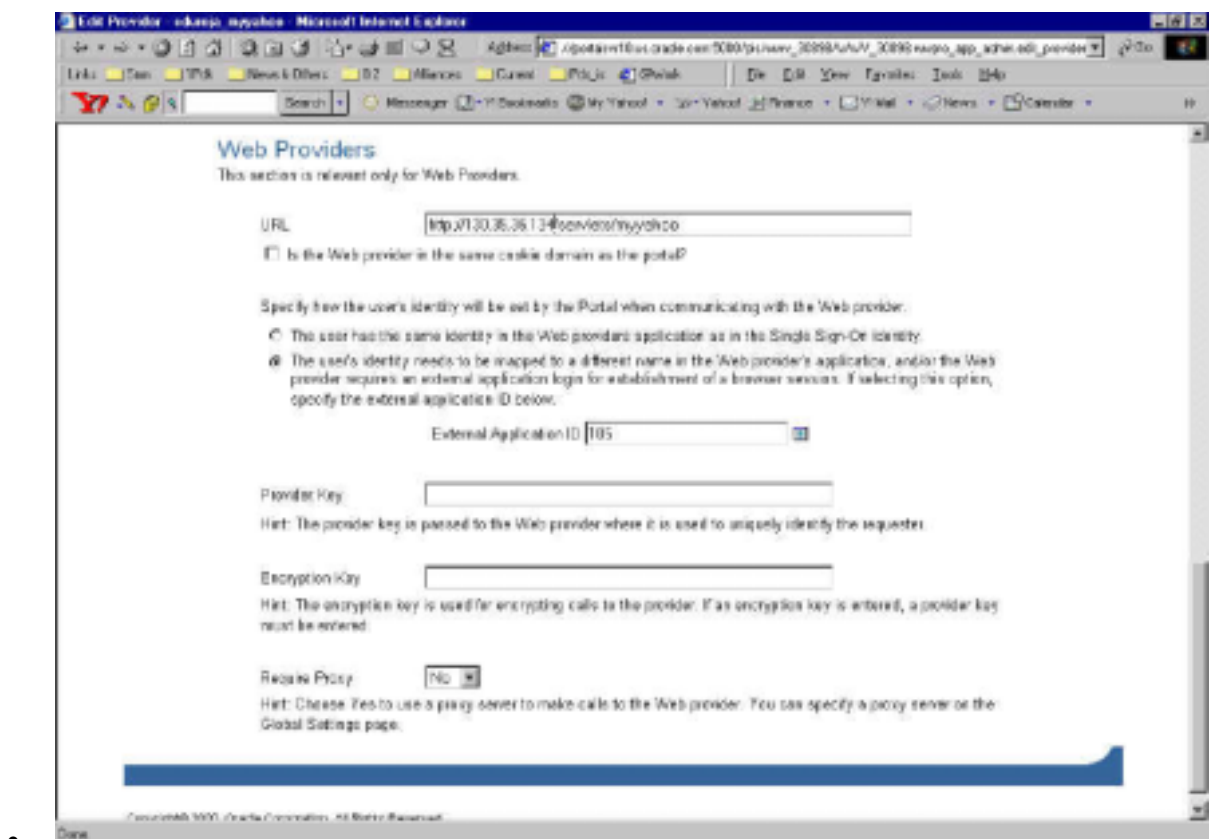
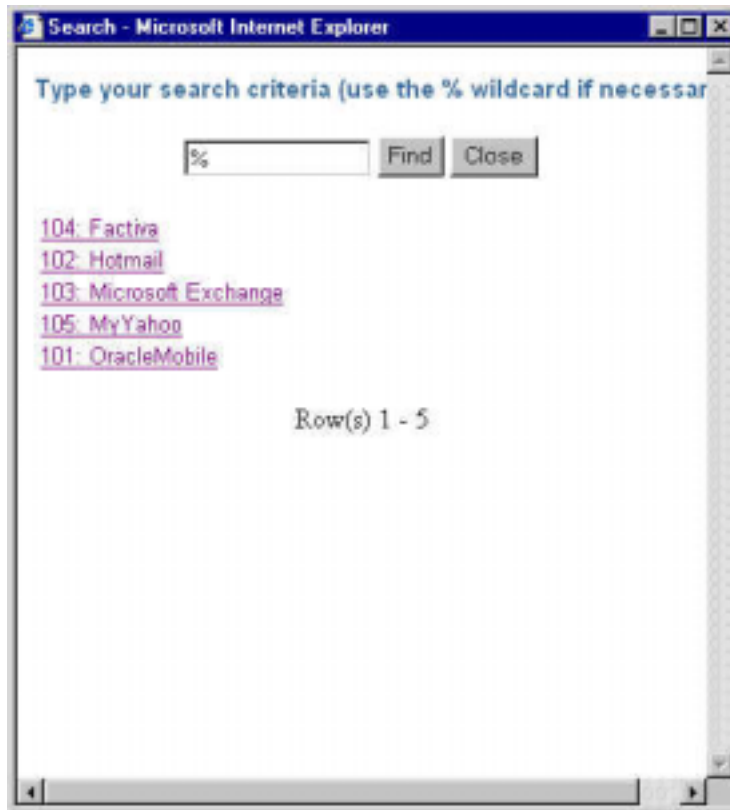
Hint: Choose Yes to allow providers on the local node to be registered on remote nodes.

Done

- **Provider Login Frequency:** Always



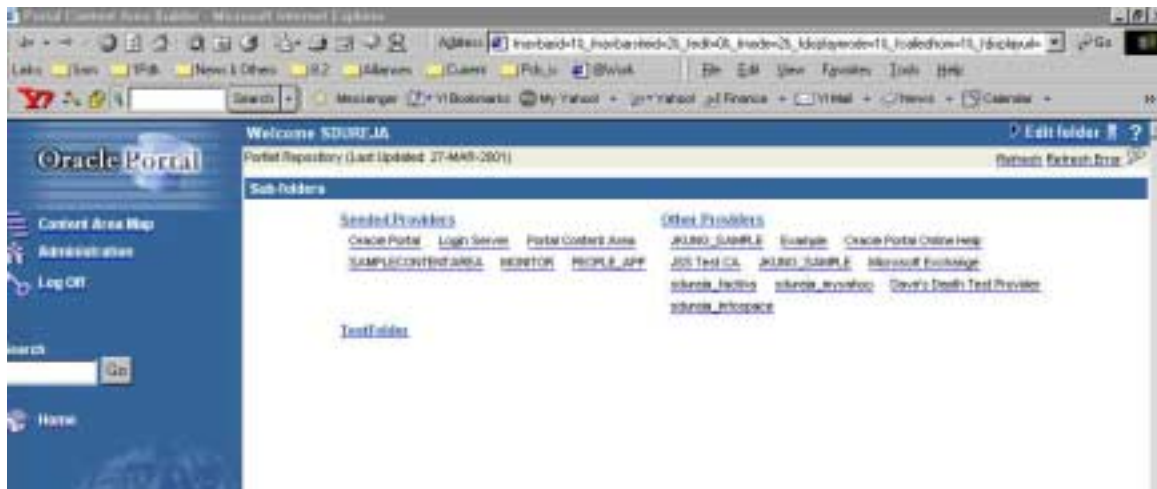
- **URL:** `http://<ip address of machine where web server is located>/servlets/myyahoo`
Note: it must be the ip address and not the hostname or localhost.
- **Check the following radio button:** The user's identity needs to be mapped to a different name in the Web provider's application, and/or the Web provider requires an external application login for establishment of a browser session. If selecting this option, specify the external application ID below
- **Click** on list of value box next to **External Application Id**. Select My Yahoo External Application



7. Click **OK** at the upper right corner of this page when you are done to create the Web Provider.

This associates your new Web Provider with the Login Server external application.

8. Click on the **Display Portlet Repository**.
9. Click on the **Refresh** link on the top right hand side of the page to refresh the list of providers.
10. Scroll down to see your MyYahoo Provider in the list.

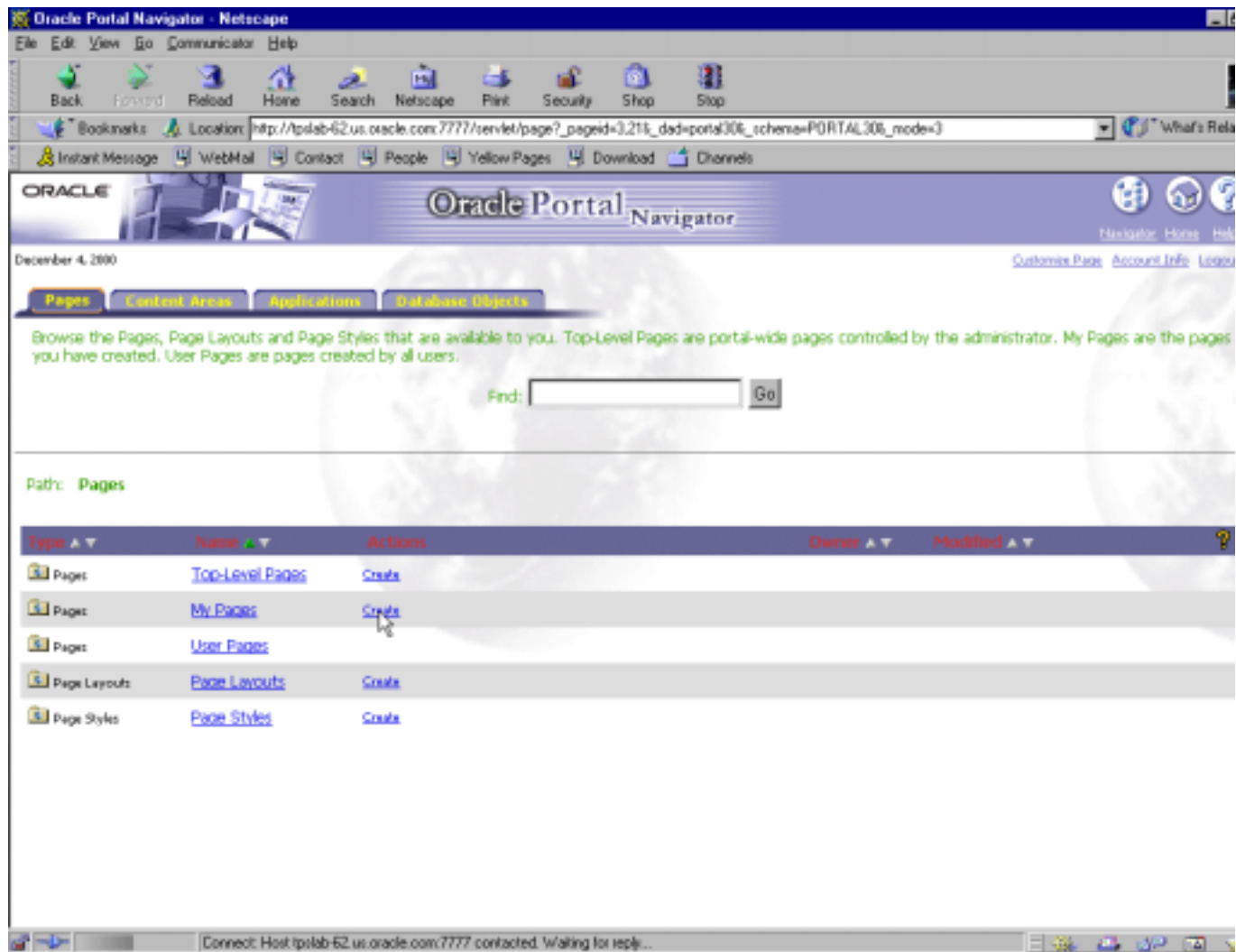


11. When done, click the **Home** link on the left navigator to go to the main portal page

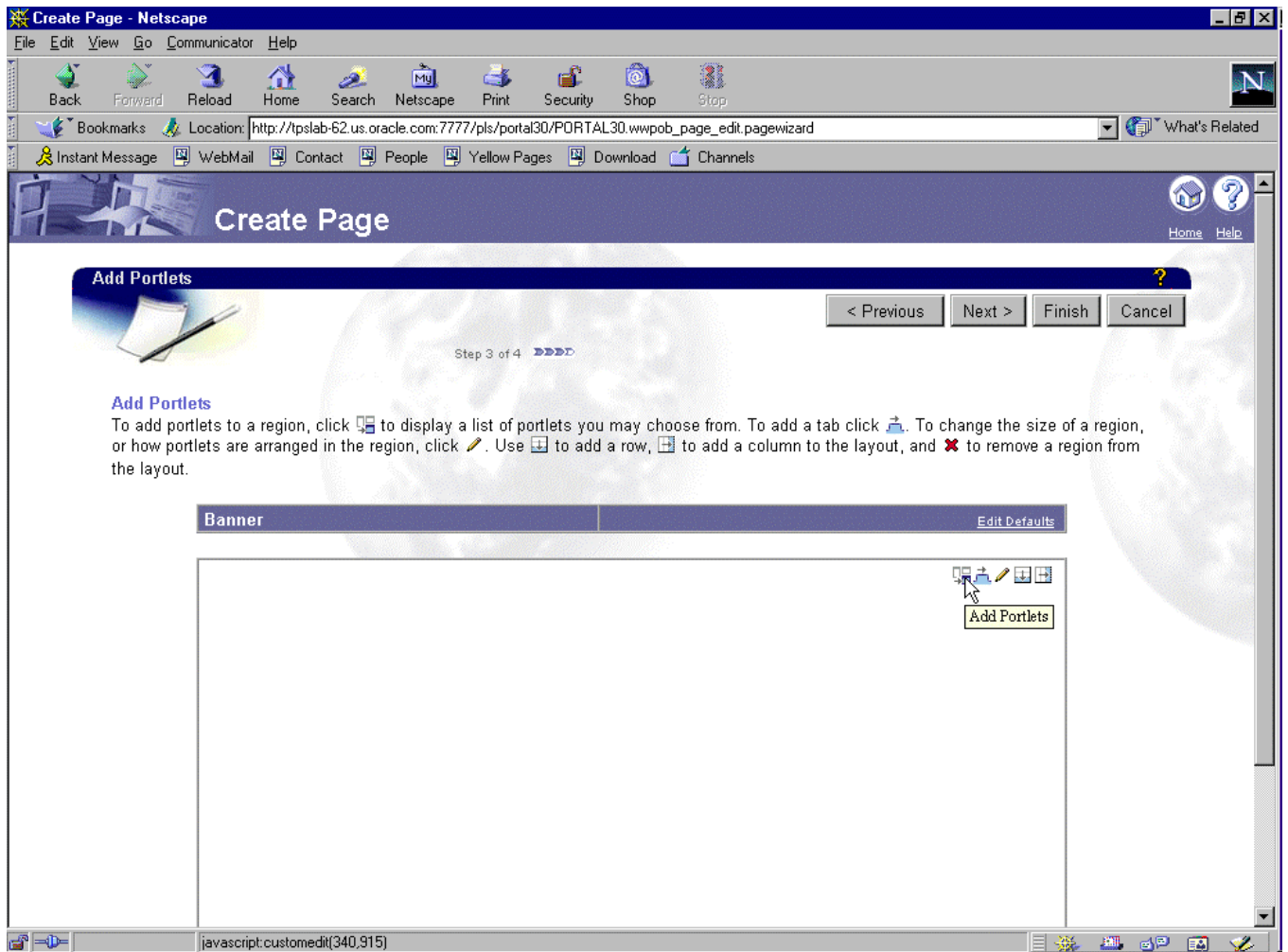
Task 6: Add Portlets To Portal Page

You will now create a Portal Page and add the Portlet you just registered to your Portal Page.

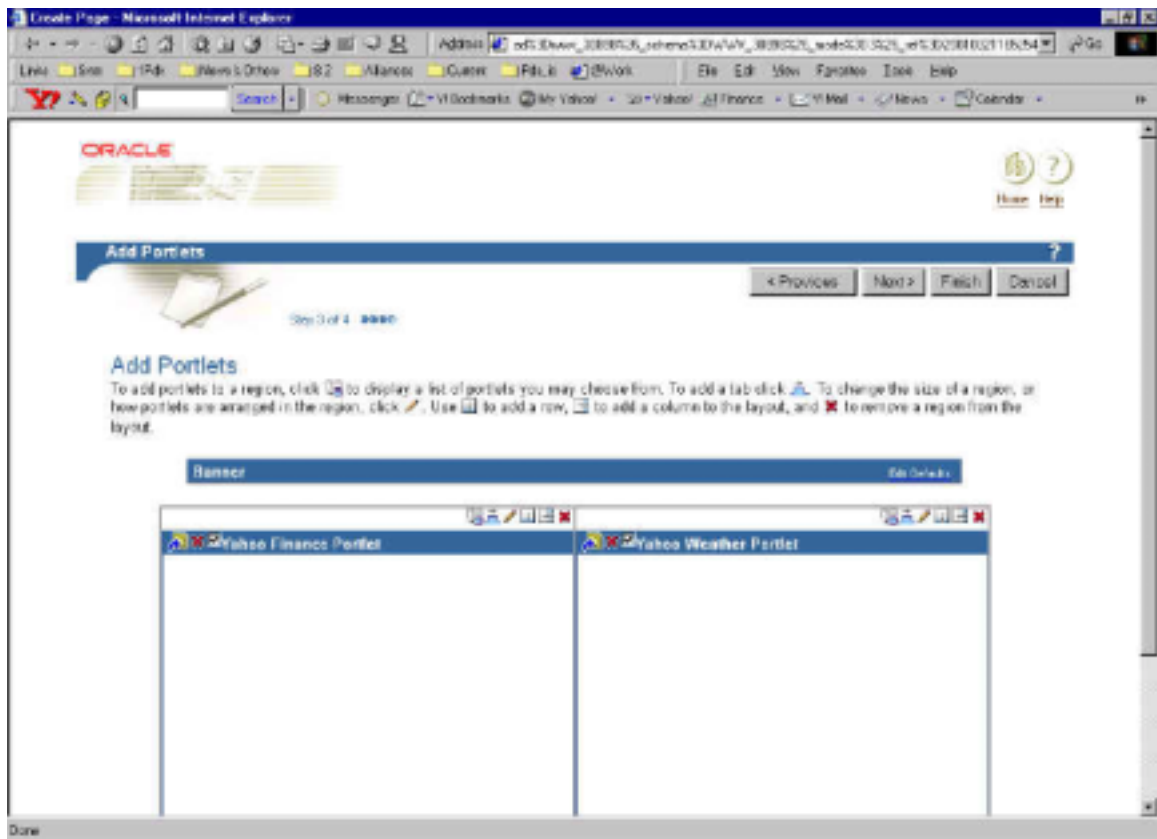
1. You if wish cannot log out of Portal and login as user who does not have login server administration privileges.
2. From the main portal page, in the upper right corner, click on the **Navigator** link.
3. Click on the **Create** link next to My Page.



3. Specify a Name and Display Name and click **Next**.
4. Accept Default layout template and Default style for the page. Click **Next**.
5. Click the **Add Portlet** icon.



6. On Provider Repository Screen. Under Other Providers, you would see your MyYahoo provider listed. Click on your provider. This will bring two yahoo portlets listed. Add portlet to your page by clicking on the > icon in front of the name. Click **OK**.



7. Click **Finish** to create the page. Your browser should return you to the portal page with your portlet added.



Since this is first time you are accessing these portlets for this particular portal user, you will get this login-failed error in portlets. Click on Update login information link to take you to screen where you can store, login information for this portal user and xternal application. All this information entered would be stored in Login Server password vault in encrypted form.

Oracle

Edit External Application Login Information

Apply OK Cancel

External Application Login Information

Enter your user name (or other form of application identification) and password for this application. You may also enter custom values for any additional login parameters shown. The Login Server uses this information to login on your behalf. If you click Remember My Login Information For This Application, the Login Server automatically logs you in each time you access this application.

Application Name: MyYahoo

User Name/ID:

Password:

Submit:

Copyright © 2000, Oracle Corporation. All Rights Reserved.

Submit : Sign In (Default) User Name : (your username)
Password : (your password)
Submit : Sign In (Default)

Click On OK.

This will take you back to your portal page. If you see error WWC-43147 on your page. Reload your portal page.

Task 7: Test the Yahoo Portlets

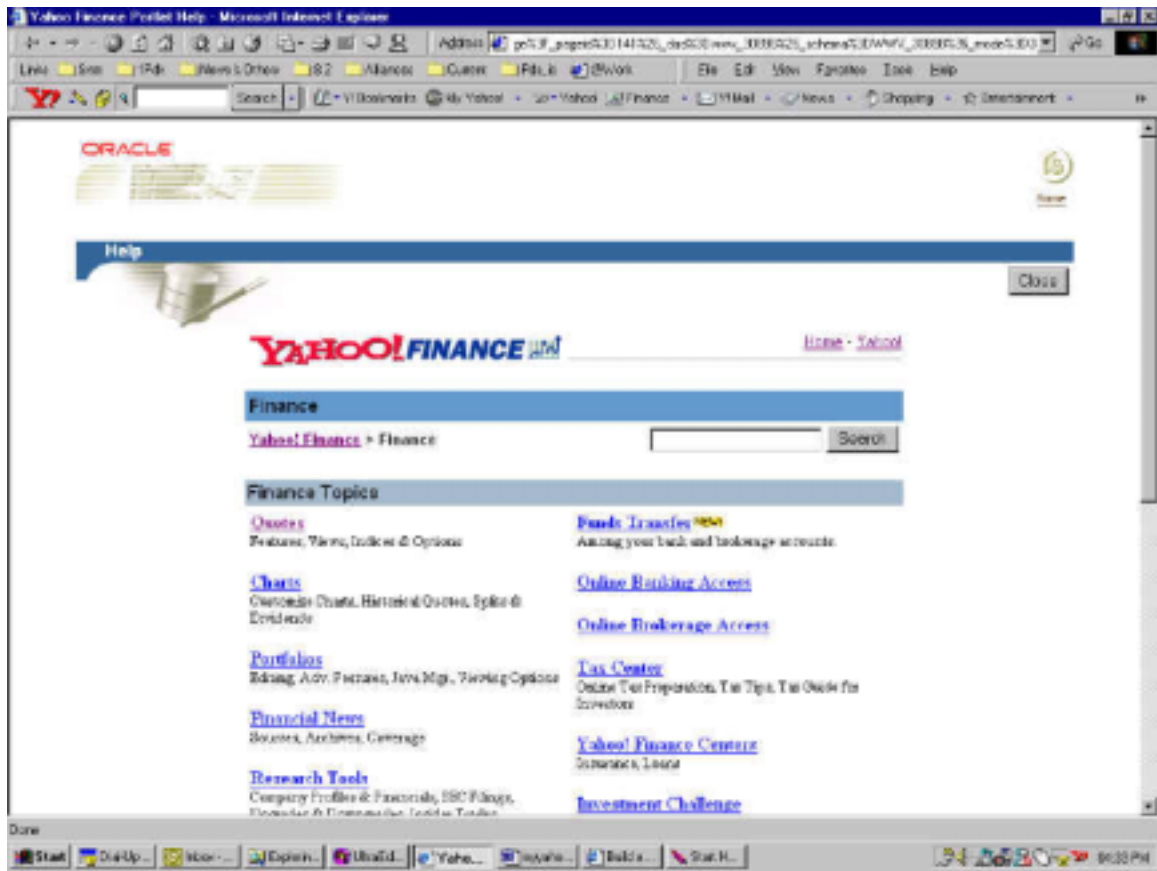
1. On successful addition of Portlet to page, you would see following page

The screenshot shows a Microsoft Internet Explorer browser window displaying a My Yahoo! page. The address bar shows a URL from portaln10.us.oracle.com. The page features a 'my Yahoo' logo and a navigation bar with links like 'Links', 'Snn', '1Pck', 'News & Offers', 'B2', 'Alliances', 'Cnn', 'Pck', 'e@wik', 'Die', 'Ed', 'Yew', 'Fgates', 'Jock', 'Hlp'. Below the navigation bar, there's a 'my Yahoo' section with a date 'March 28, 2001' and links for 'Customize', 'Account Info', and 'Logout'. The main content area is titled 'Yahoo Finance Portlet' and 'Portfolio for uriservices - My First Portfolio'. It includes a 'Views' section with links like 'Basic', 'Index', 'DayWatch', 'Performance', 'Fundamentals', 'Real-time ECN', 'Detailed', and 'Create New View'. A table of stock data is displayed, showing columns for Symbol, Last Trade, Change, Volume, More Info, and Trade now. The table lists stocks like PDJ, PDG, GE, ORCL, and SUNW. Below the table, there's a note about quote delays and a link to 'Select a Symbol for a detailed quote'. At the bottom, there's a 'Yahoo Weather Portlet' showing weather for Chicago, IL, London, UK, and San Francisco, CA. The browser's status bar at the bottom shows the URL 'http://portaln10.us.oracle.com:5000/js/www_30888_sso/www_30888_sso/www_app_admin/app_process_login?_of_nwww_dnnelo_app' and the time '04:22 F'.

Symbol	Last Trade	Change	Volume	More Info	Trade now
PDJ	4:03PM 9785.35	-162.19 -1.63%	N/A	Chart News Components	N/A
PDG	5:15PM 1854.13	-118.13 -5.99%	N/A	Chart News	N/A
GE	4:02PM 41.55	-0.36 -0.86%	25,709,100	Chart News Mega Profile Research Insider Options	Choose Package
ORCL	4:01PM 15.1	-1.55 -9.31%	46,401,600	Chart News Mega Profile Research Insider Options	Choose Package
SUNW	4:00PM 15.85	-1.56 -8.96%	54,805,900	Chart News Mega Profile Research Insider Options	Choose Package

Your My Yahoo user would be logged on your behalf. Click on any of the links. All the links open a different browser window.

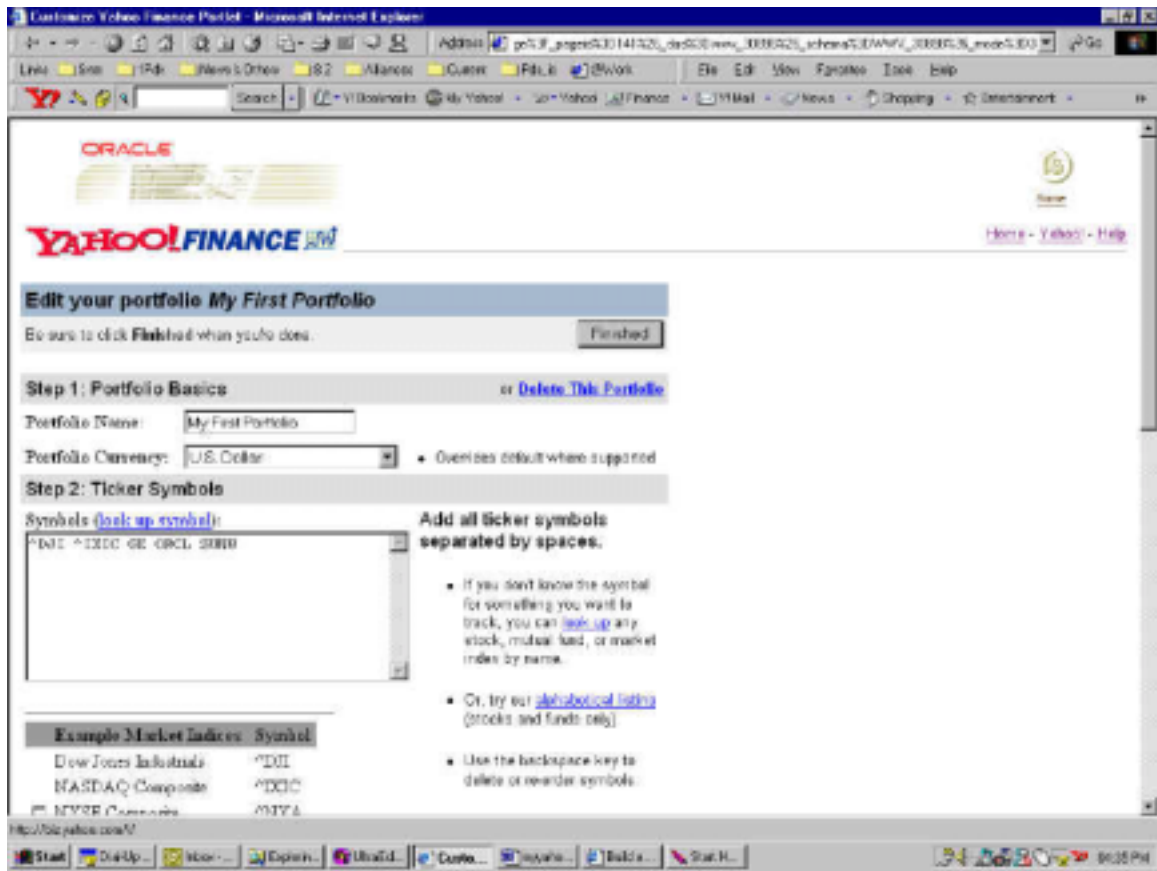
2. On Yahoo Finance Portlet, Click on **Help link of Portlet title bar**. This would bring a Yahoo finance help page, in Portal container. Read help, Click on Close button. This brings you back to your portal page.



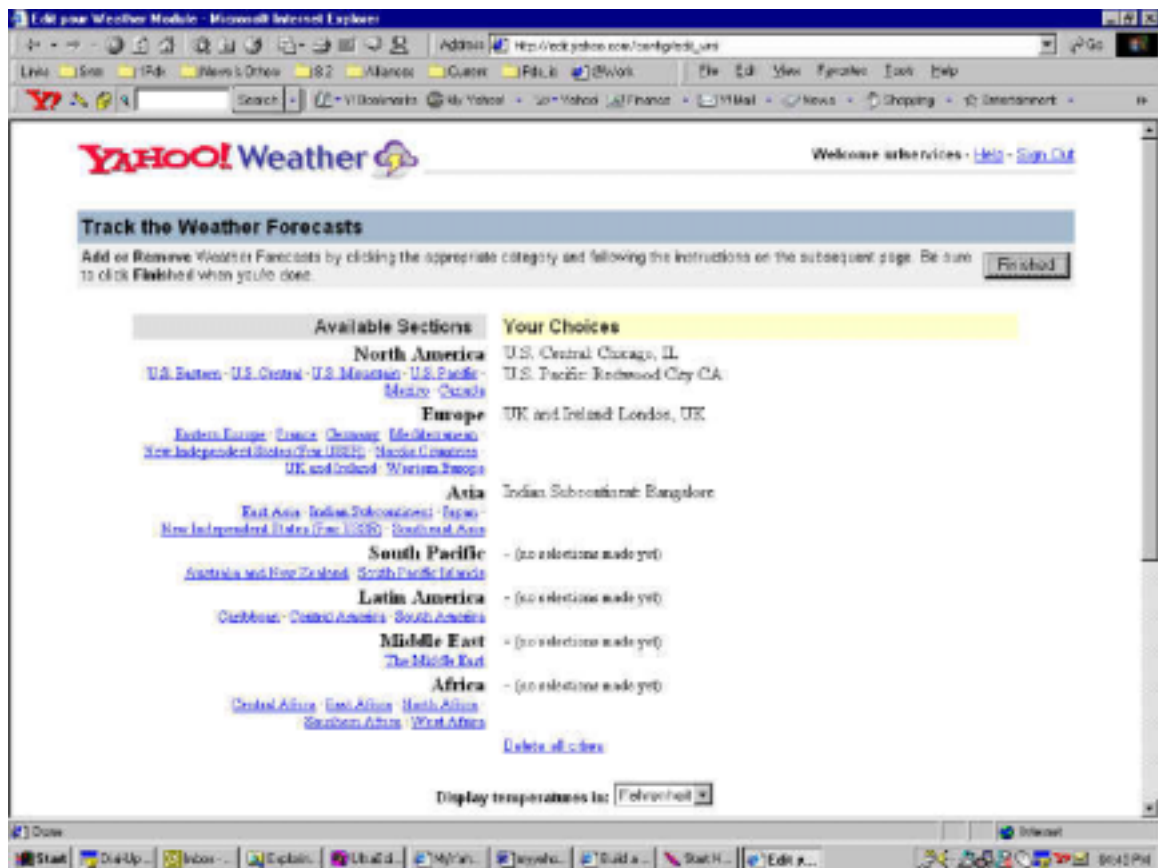
3. On Yahoo Finance Portlet, Click on **Customize link of Portlet title bar**. This would bring Yahoo Finance Portfolio edit screen. This has no Portal Container on it. Edit the Screen. Clicking on Finish would take you out of Portal.

This is default behavior of Edit screen of Yahoo Finance. The expected behavior from edit screen over here is that it should take you to a page from where it navigated. If so then, you will be navigated back to Portal page.

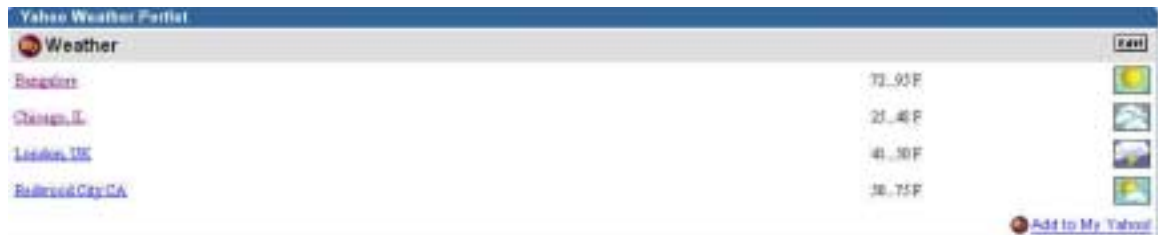
Use browser Back button to go back to your portal page. Or click on Home shortcut to go back to your Portal Home Page.



4. Click on Edit Link within Yahoo Weather Portlet. This opens up another browser window. Add another City to your weather edit list. Click on Finish.



5. Click on Refresh button of your portal page. New City would be added to your weather Portlet.



Summary

In this lesson, you should have learned how to:

- 1 Setup and crosscheck the JPDK environment
- 2 Modify the provider.xml file
- 3 Setup your Apache environment for running URL Services web provider
- 4 Create External Application In Oracle Portal For Yahoo applications.
- 5 Register the Web Provider through Oracle Portal
- 6 Add the Portlets to the Portal Page.
- 7 Test the Yahoo Portlets.