

**ORACLE®**

---

**S P A T I A L**

May 2012

Oracle Spatial User Conference

A horizontal banner with a red background and a black border. The background features a faint, stylized map of a city with various neighborhood names like "Cherrydale", "Lyon Village", "Colonial Village", "Roslyn", "Dominion", "Radnor Heights", and "National Mall" visible. The text "Oracle Spatial User Conference" is written across the center in a large, white, sans-serif font.

# Oracle Spatial User Conference

May 23, 2012  
Ronald Reagan Building and International Trade Center  
Washington, DC USA



# **2012 Oracle Spatial Excellence Awards Presentation**



# Thanks To Our Sponsors





# Education and Research: Technical University of Berlin



Institute for Geodesy and Geoinformation Science

- Lead in developing CityGML standard
- Mapped UML model to Oracle Spatial (geometries, raster)
- Data model available as open source
- Validated approach in various projects, (City of Berlin, Germany)



<http://www.3dcitydb.net>



# Education and Research: Technical University of Berlin



**Institute for Geodesy and Geoinformation Science**

- CityGML used in Germany, Switzerland, The Netherlands, USA, ...
- Many 3<sup>rd</sup> party implementations
- See Presentation at 4:00-4:30pm, Track B, “Deploying 3D City Models for Urban and Metropolitan Planning”
- Javier Herreruella, Senior Developer, IGG, U. Berlin

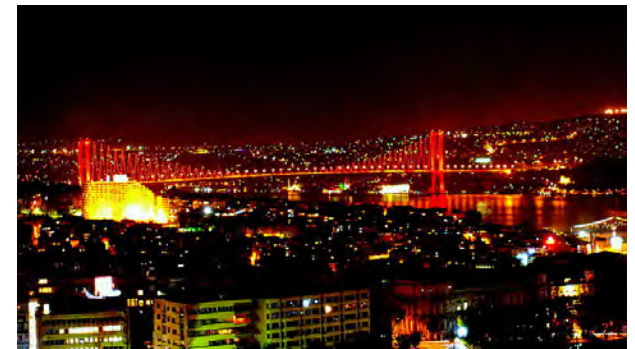
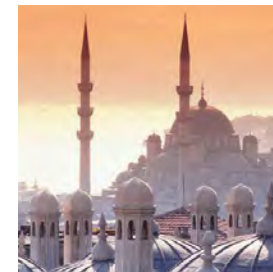




# Innovator: Istanbul Metropolitan Municipality



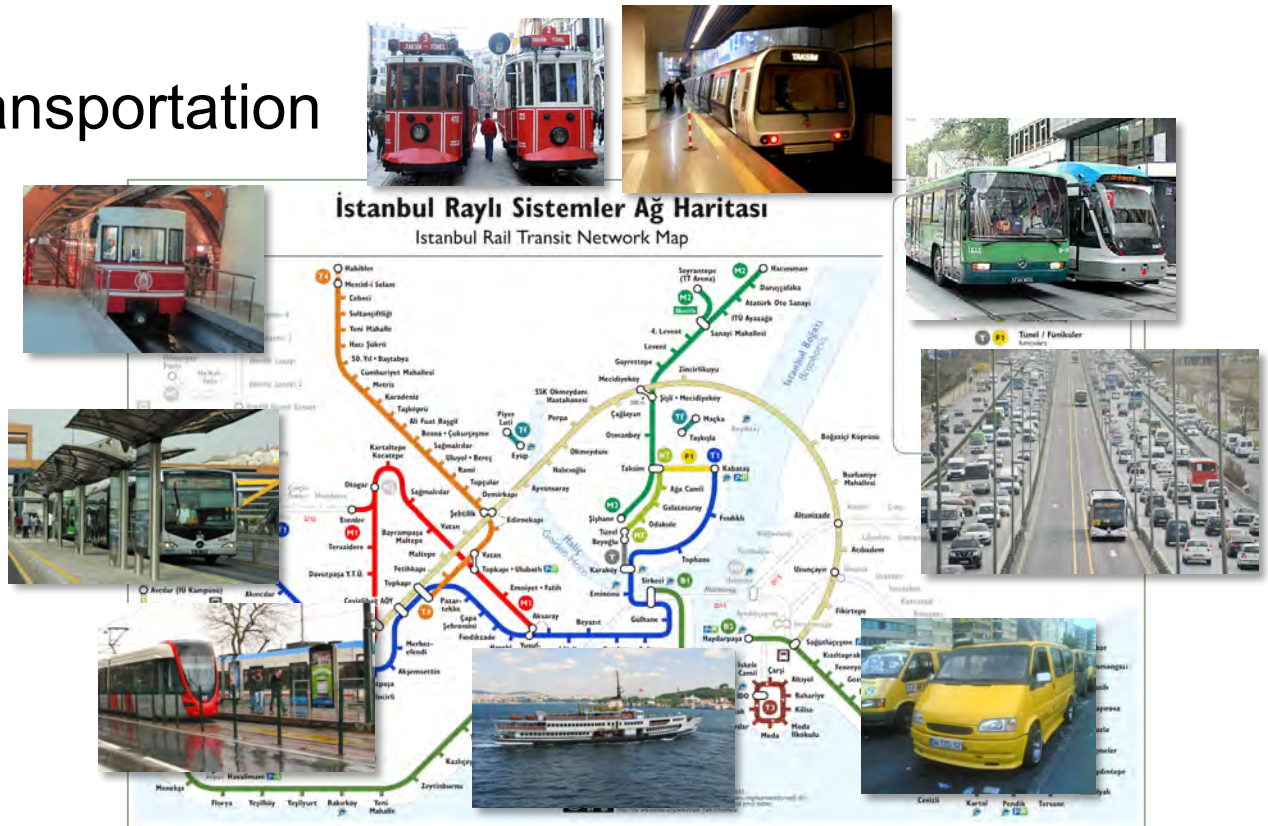
- Istanbul is the 3<sup>rd</sup> largest metropolitan area in Europe
- Over 13 million population and growing
- Spread over Europe and Asia
- Transportation is a challenge



# Innovator: Istanbul Metropolitan Municipality



- Many modes of transportation
  - Buses
  - Tramways
  - Metro
  - Trains
- But also
  - Ferries
  - Private mini-buses
  - Shared taxis





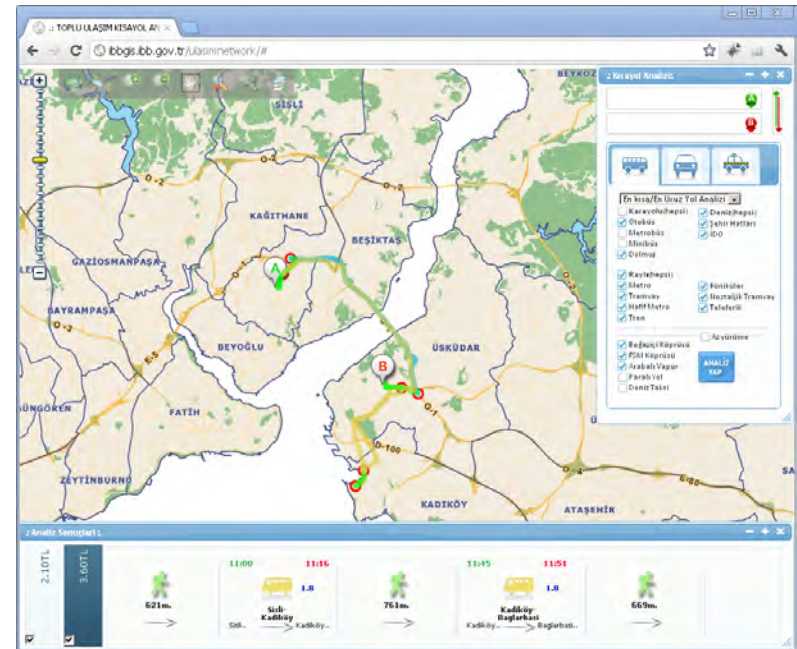


# Innovator: Istanbul Metropolitan Municipality



## Multi-Modal Routing Application

- Public service (web/mobile)
- Guidance for optimal route considering all transportation modes.
- Integrated network combining data from multiple agencies
- Also road network for interconnection
- Includes timetables and costs
- Uses Oracle Spatial Network Data Model

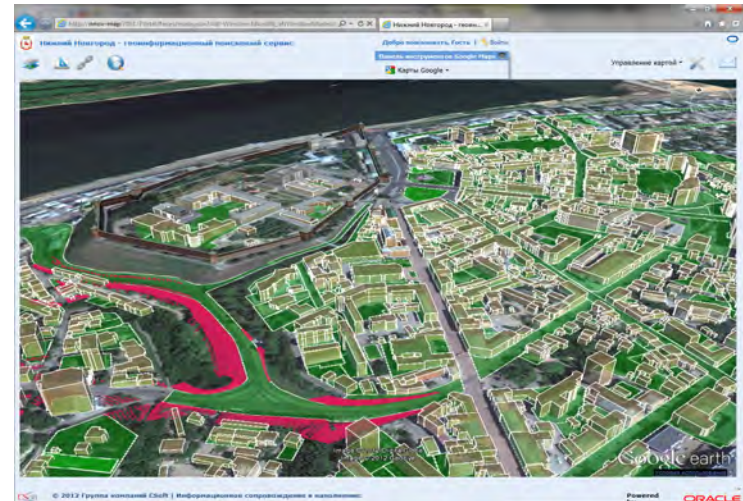




## Partnership: CSoft group



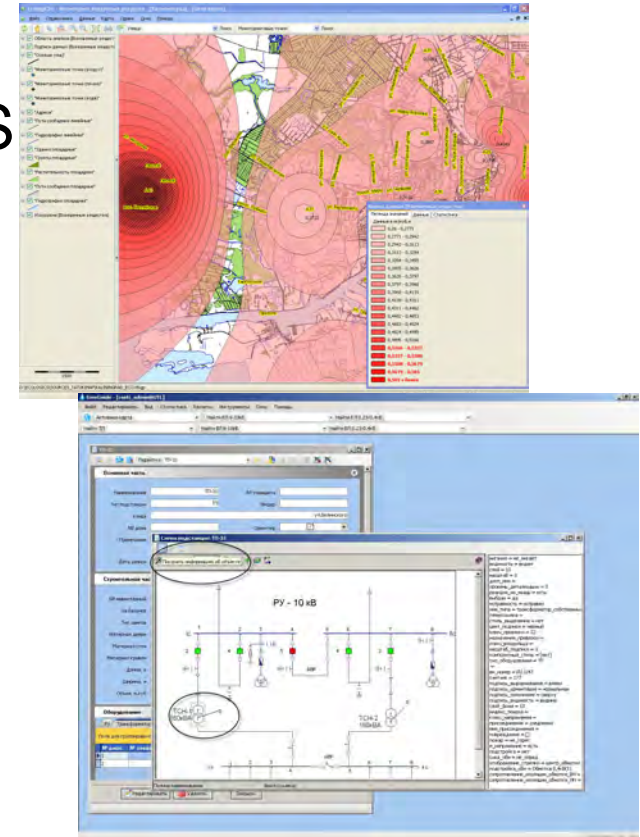
- About CSoft group
  - Largest Russian system integrator and consultancy provider in CAD/GIS
  - 21 regional branches, 600+ employees, 60+ units in proprietary software tools portfolio
  - various vertical solutions (urban development, utilities, road planning, etc.)





## Partnership: CSoft

- Multi-level distributed urban GIS (CS MapDrive, CS UrbanView)
  - Centralized database for multiple municipalities/regions- raster, vector, documents, meets Russian fed. Regulation
  - Decision support for municipal/regional authorities, Web portal for citizen access
  - Supports utilities, environment, transportation





## Partnership: CSoft group

- Key customers/projects include SP GIS for Russian regions and cities
  - Kaliningrad region – won ‘Best project of the RF Federal level’ award at all-Russian IT Awards in St-Petersburg (2009)
  - Tyumen region – won ‘Best project of the regional level’ (2008)
- Alexander Stavitsky, CEO and head of the GIS department, CSoft group
- Presentation at 3:30-4:00pm, Track B, “Multi-level distributed Oracle-based Urban GIS: Implementations in Russia”



## Partnership: **OSCARS**



- Provides consultancy/training in Europe (France, Belgium, Luxembourg)
- Focused on Oracle Spatial/MapView technologies
- Founded in 2004 by Olivier Dubois
- Deliver Oracle University training throughout Europe
- Oversight committee member for new Oracle PartnerNetwork Spatial Specialization





## Partnership: **OSCARS**



- Customer references and innovative implementations
  - Aéroports de Paris (Paris Airports)
    - Vehicle track and trace, Business Intelligence. Plans for CEP
  - Lille Metropole (France)
    - Custom geocoding
  - Walloon Region (Belgium)
    - GeoRaster, Study exploring point clouds/TINs/3D building modeling with Spatial)
    - Web-services and Inspire



## Special recognition

- For their contributions to the Oracle PartnerNetwork Spatial Specialization launch
  - Olivier Dubois, General Manager, OSCARS
  - Steve Pierce, CEO, ThinkHuddle