

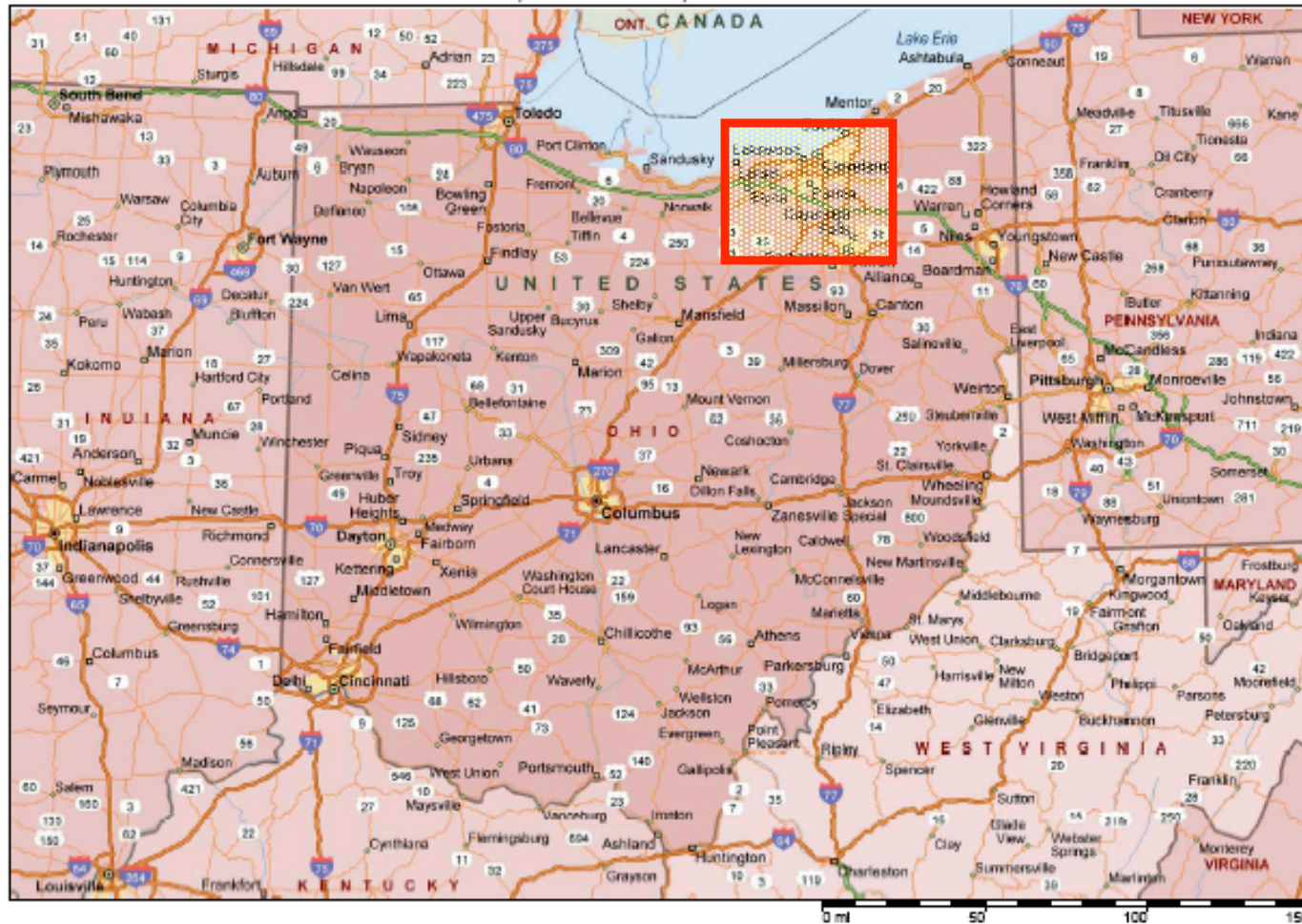
CEGIS ***A Geospatial SOA*** ***for Cuyahoga County, OH***

By:

J. Kevin Kelley – Cuyahoga County GIS Coordinator

Joseph R. Seppi – Michael Baker Jr., Inc.

Ohio, United States, North America



Copyright © 1999-2004 Microsoft Corp. and/or its suppliers. All rights reserved. <http://www.microsoft.com/choice/>

© Copyright 2003 by Geographic Data Technology, Inc. All rights reserved. © 2004 NAVTEQ. All rights reserved. This data includes information taken with permission from Canadian authorities © Her Majesty the Queen in Right of Canada.

What is CEGIS?

- The Cuyahoga County Enterprise GIS Office
 - Currently Under the County Engineer
 - Funded by Department of Homeland Security Grants
 - Governed by a 5 –member Steering Committee
 - GIS Coordinator
 - County Engineer's Office
 - County Auditor's Office
 - County Information Services Center (CIO)
 - County Commissioners
 - Advised by a broader Working Group
 - Emergency Services, Planning Commission, County Board of Elections, City of Cleveland, NEORSD, etc.

Why implement CEGIS?

- The timing was right for CEGIS
 - Funding sources (HLS, HB361, LBRS) etc.
 - Technological advancements:
 - Geospatial data interoperability and portability
 - Linearly scalable SOA
 - Cross-Jurisdictional Data Sharing Agreements
 - City of Cleveland, NEORSD
 - Benefits:
 - Modernized landbase
 - Horizontally integrated geospatial applications
 - Fits current IT business model

As-Is GEA

- Over 30 county agencies with their own desktop GIS in place or planned.
- No coordinated effort to standardize or integrate geospatial data or applications
- MOU between County, City and NEORSD to build parcel map

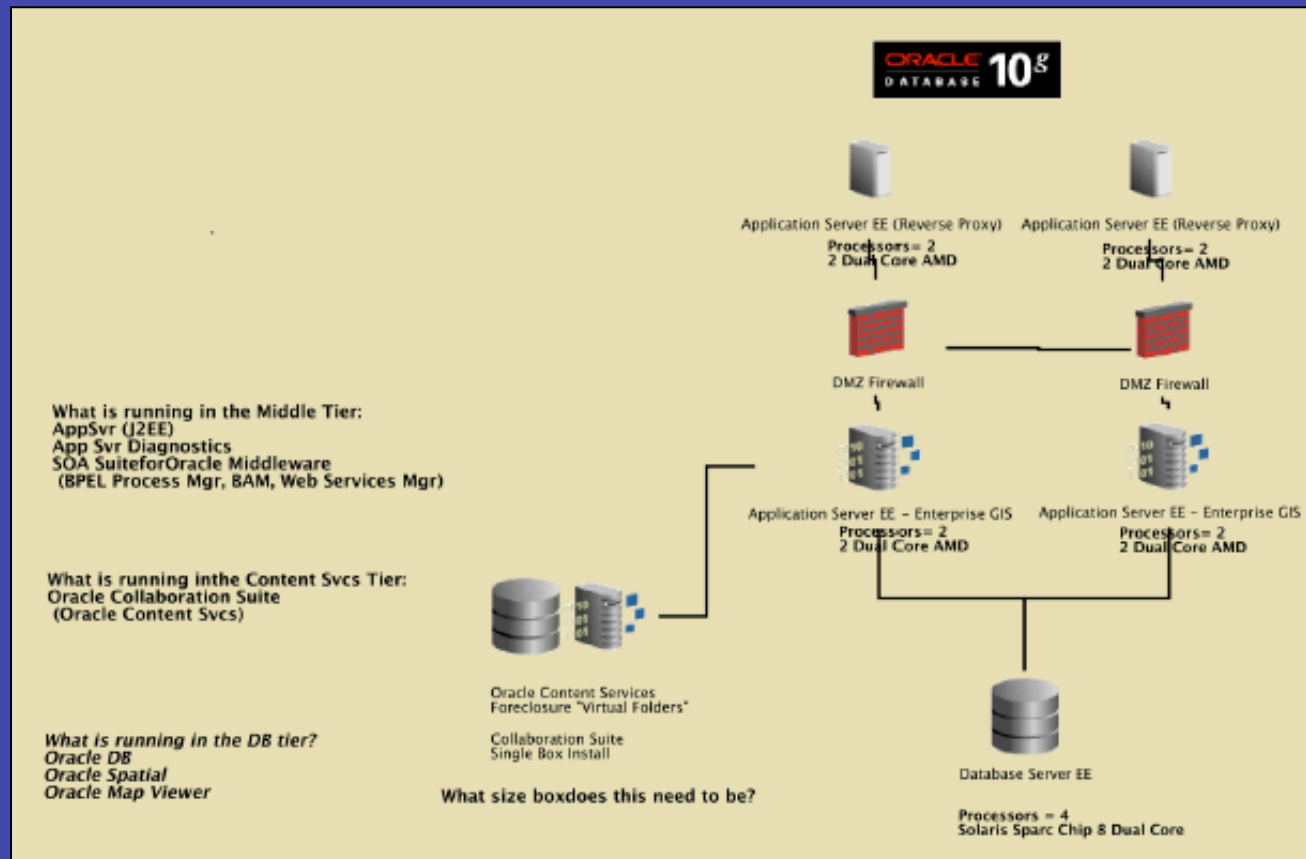
To-Be GEA Strategic Architecture:

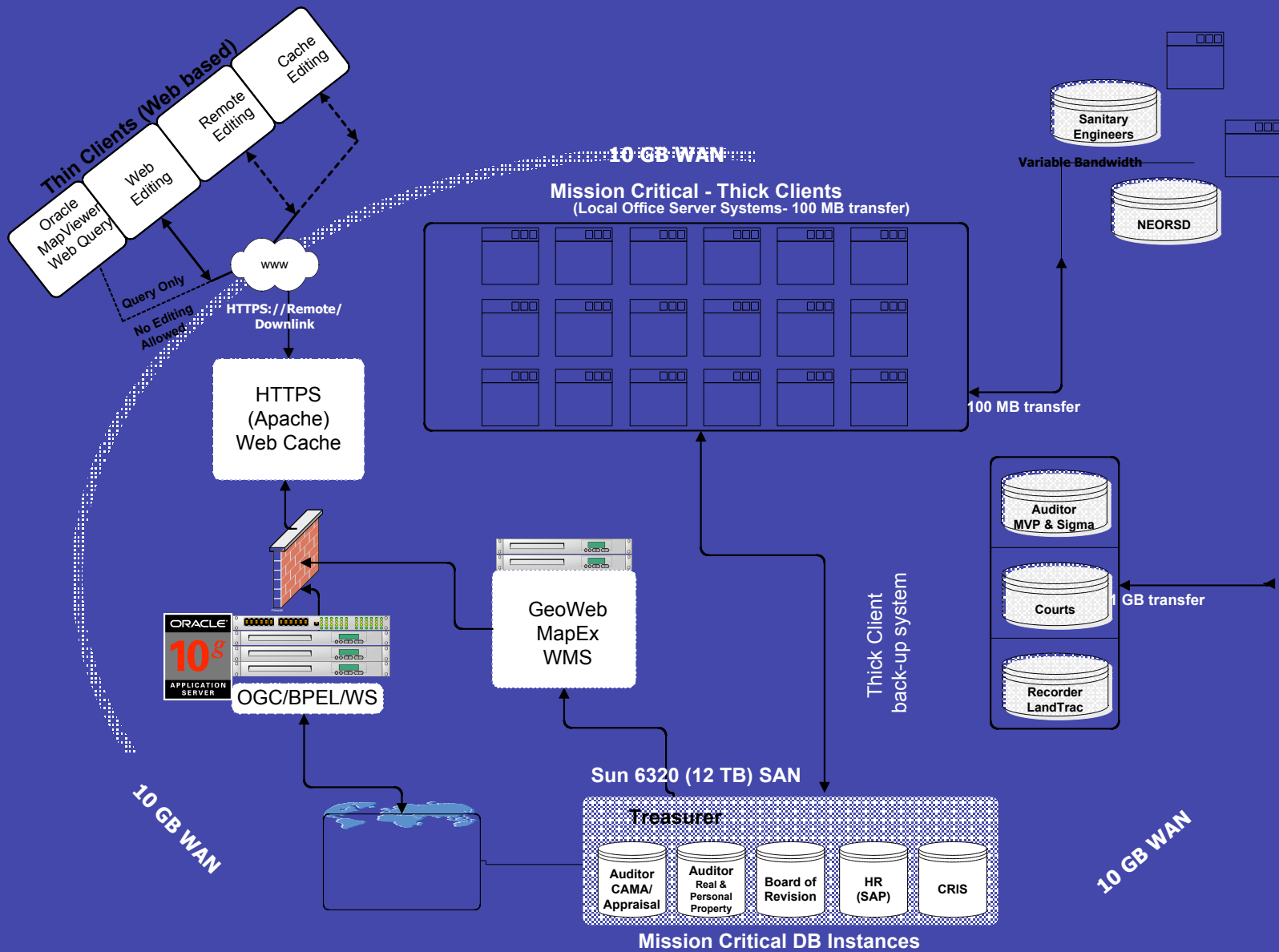
- Geospatial is the catalyst for change.
- Support the investments and respect the accomplishments of the existing GIS user community
- Build the sustainable geospatial data framework
- Offer “least common denominator” desktop mapping tools for use by all
- Let IT do its job
- Committed Steering Committee and Advisory Group
- Demonstrate success early and often
- “Spatial” is Oracle’s most powerful differentiator

Tactical Architecture:

- Oracle IT Framework
 - Database (10g, Spatial)
 - Fusion Middleware (Collaboration Suite, BPEL, BAM, Web Services Manager, Content Services, Application Server, MapViewer)
- Mission-Critical GIS/Orchestrated Applications for County & Regional Agencies
 - Engineer, Auditor, Emergency Services, Board of Elections, Child & Family Services, Prosecutor, Planning Commission, Board of Health, Metro-Parks, Municipal PSAPs, and many others...
 - Existing GIS products throughout the county: MapInfo, Bentley, AutoDesk, Intergraph, ESRI

Deployment Architecture

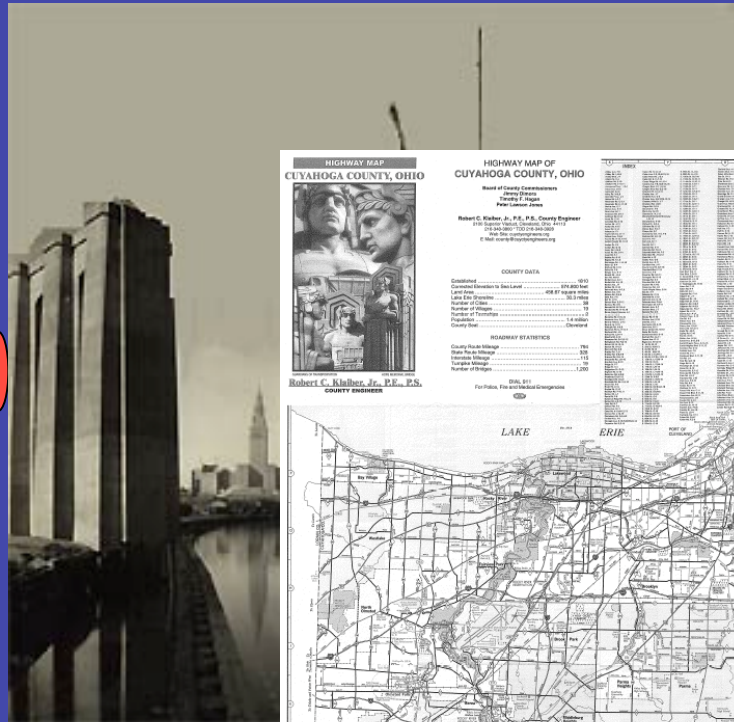




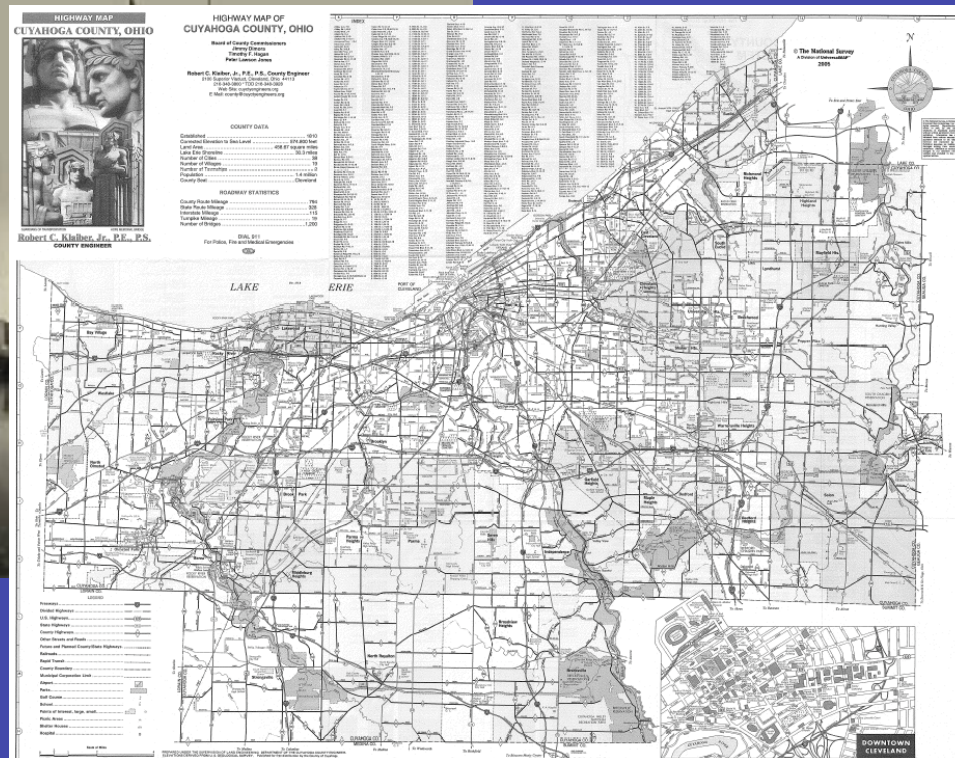
County Engineer's Office

Autodesk®

ORACLE®



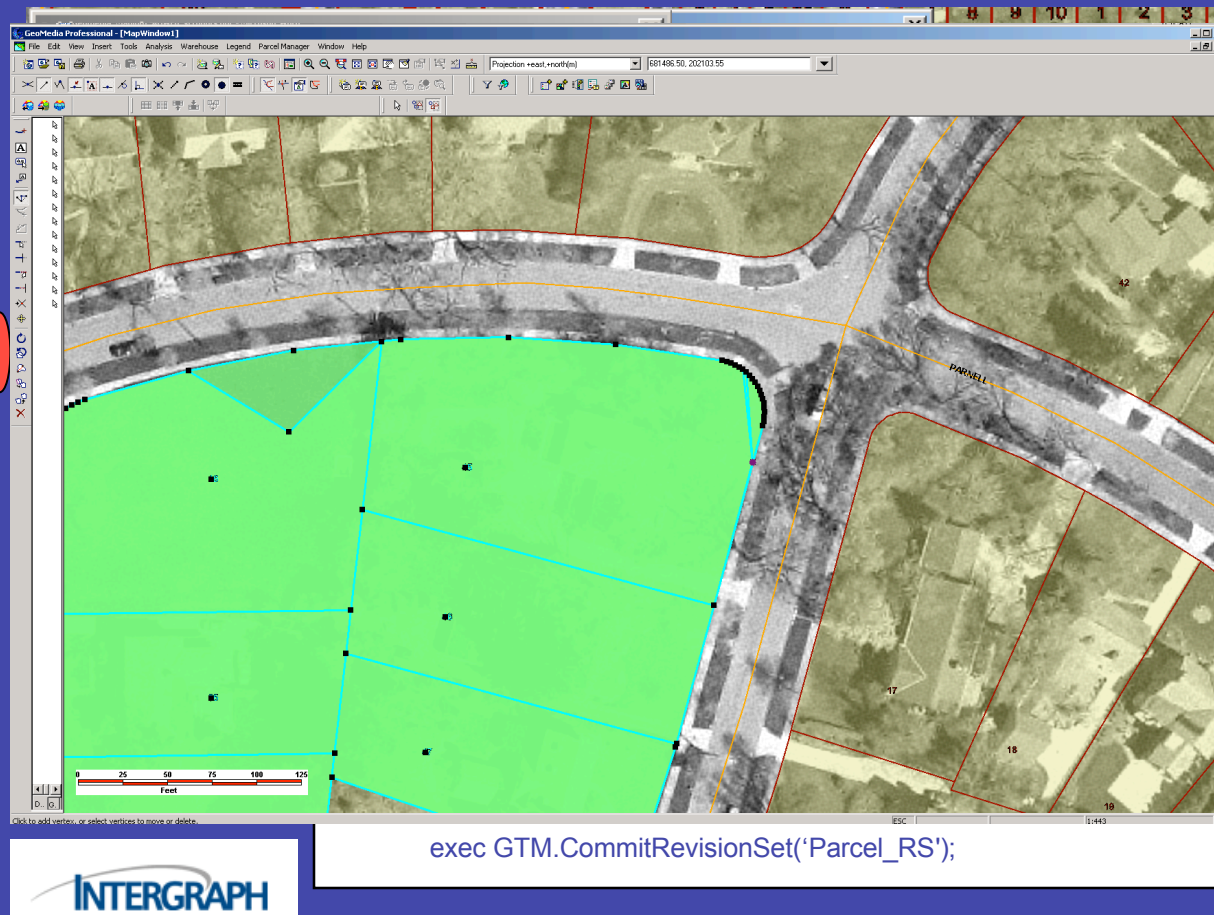
INTERGRAPH



egis
CUYAHOGA COUNTY Geospatial Information System

Parcel Map Maintenance

ORACLE

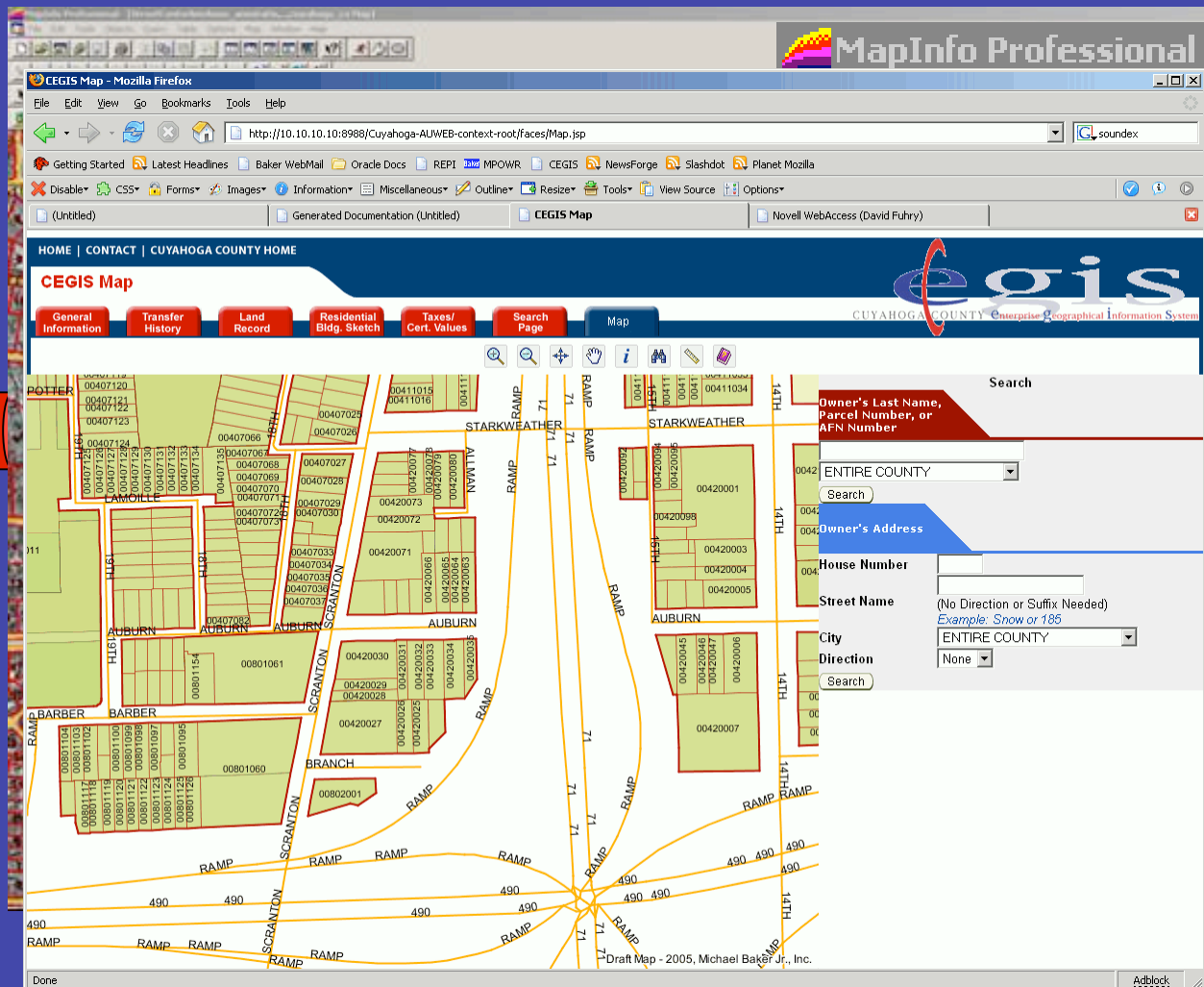


```
exec GTM.CommitRevisionSet('Parcel_RS');
```

INTERGRAPH

egis
CITY/COUNTY/STATE/LOCALITY/ZIP CODE/PHONE NUMBER

County Auditor's Office



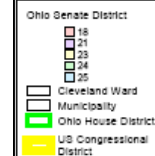
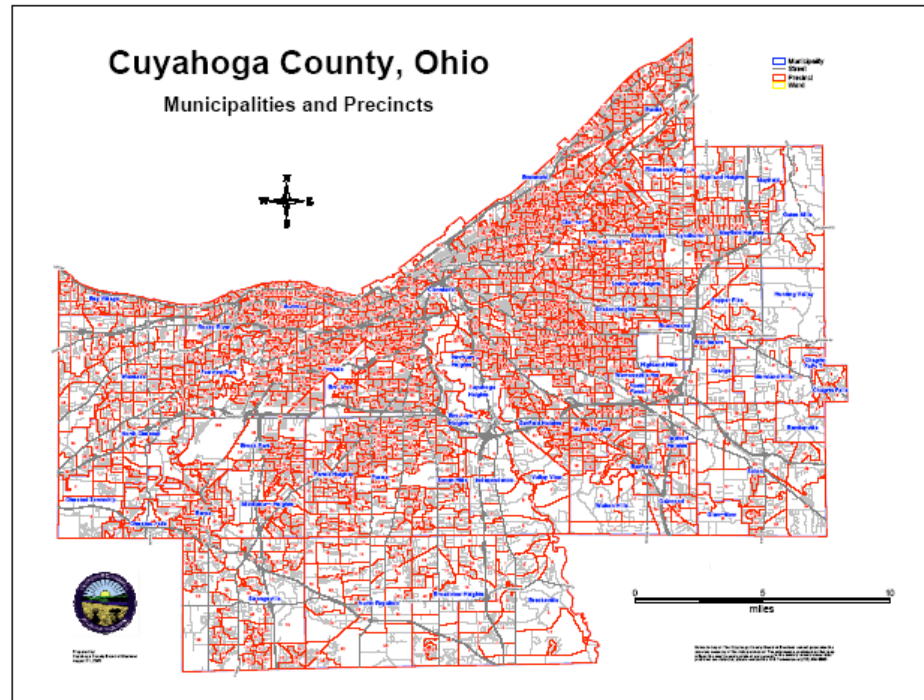
ORACLE

MapViewer

egis
CUYAHOGA COUNTY Geographic Information System

Board of Elections

ORACLE



John F. Kennedy

of Elections cannot guarantee the information contained on this map is the actually current data. Technician at (216)443-6666.

Cuyahoga County Board of Elections
April 13, 2004

MapInfo Professional

egis
Cuyahoga County Geographic Information System

Planning Commission

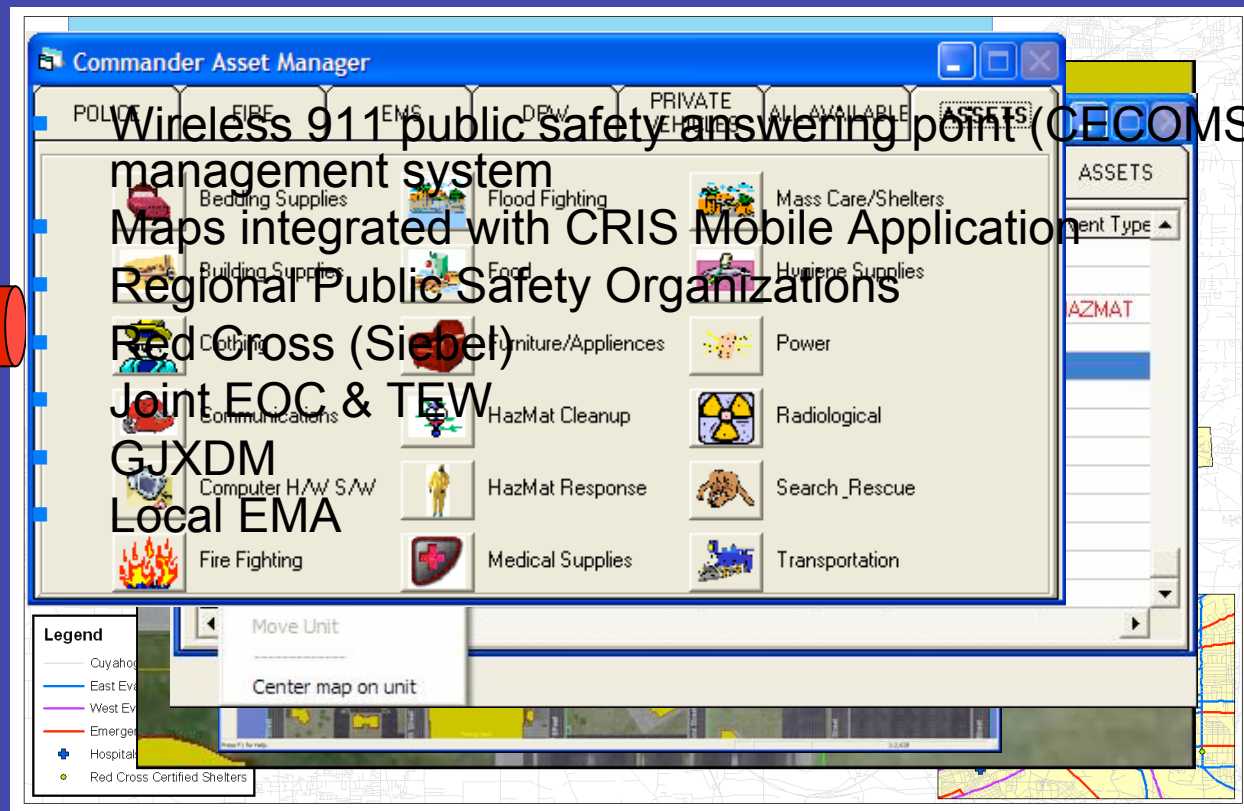


ORACLE

MapXtreme.

egis
CUYAHOGA COUNTY Geographic Information System

Emergency Services



Wireless 911 public safety answering point (CECOMS) incident management system
Maps integrated with CRIS Mobile Application
Regional Public Safety Organizations
Red Cross (Siebel)
Joint EOC & TEW
GJXDM
Local EMA



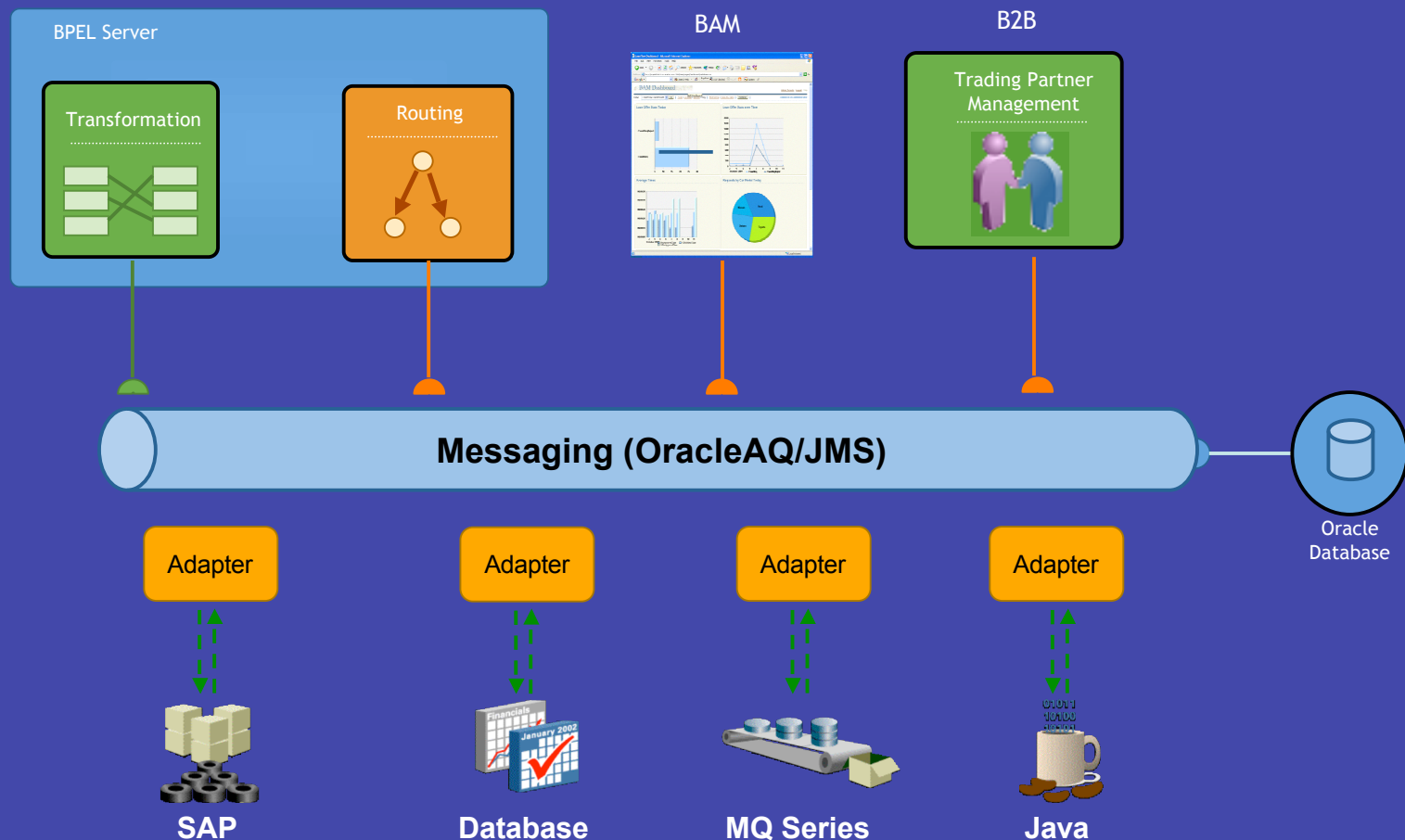
ORACLE®



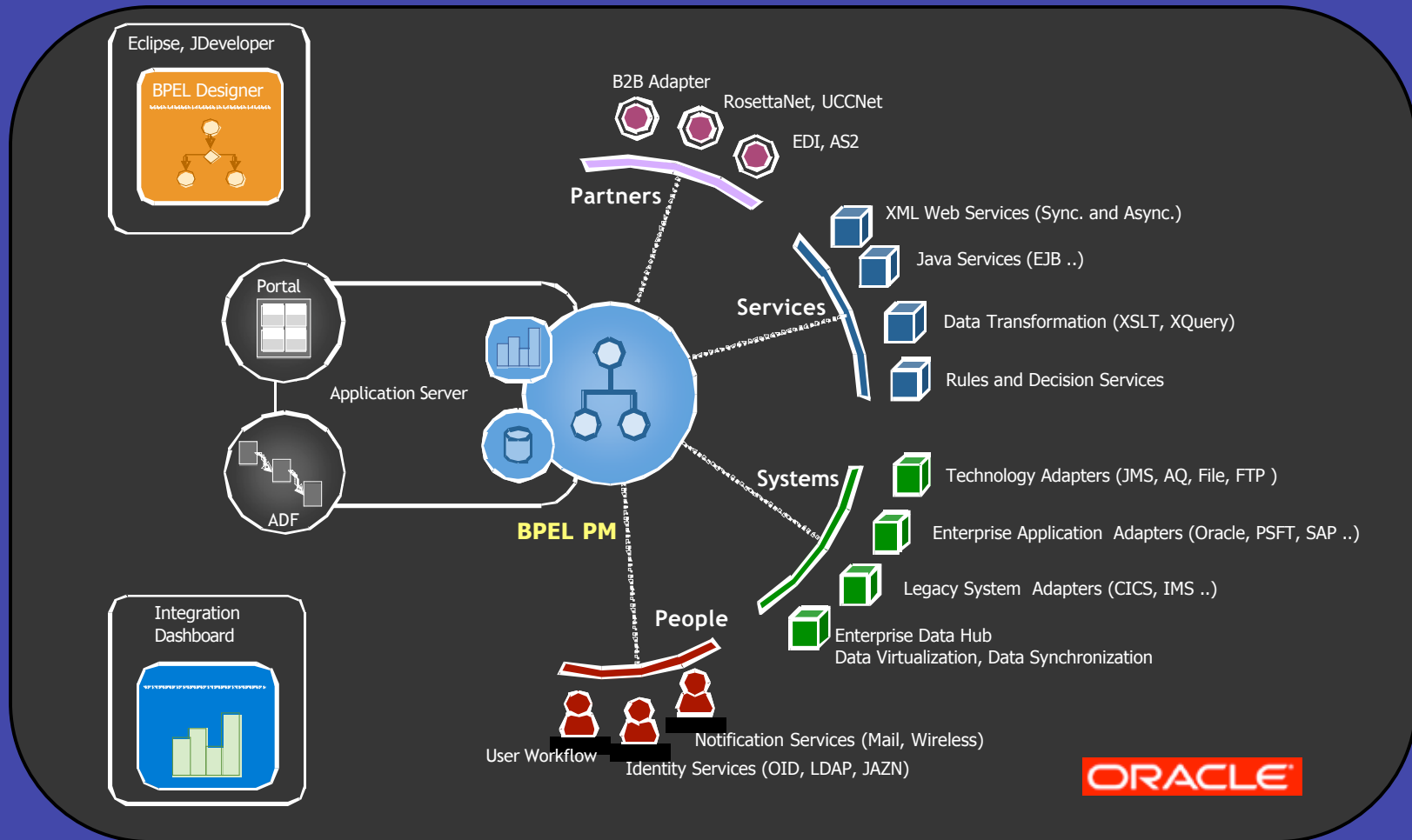
SOA Implementation

- *Requires tools to orchestrate business process integration and web services orchestration*
- *Business Process Execution Language (BPEL)*
- *Using BPEL and Fusion Middleware to embed and extend geospatial web services*

Business Process Integration



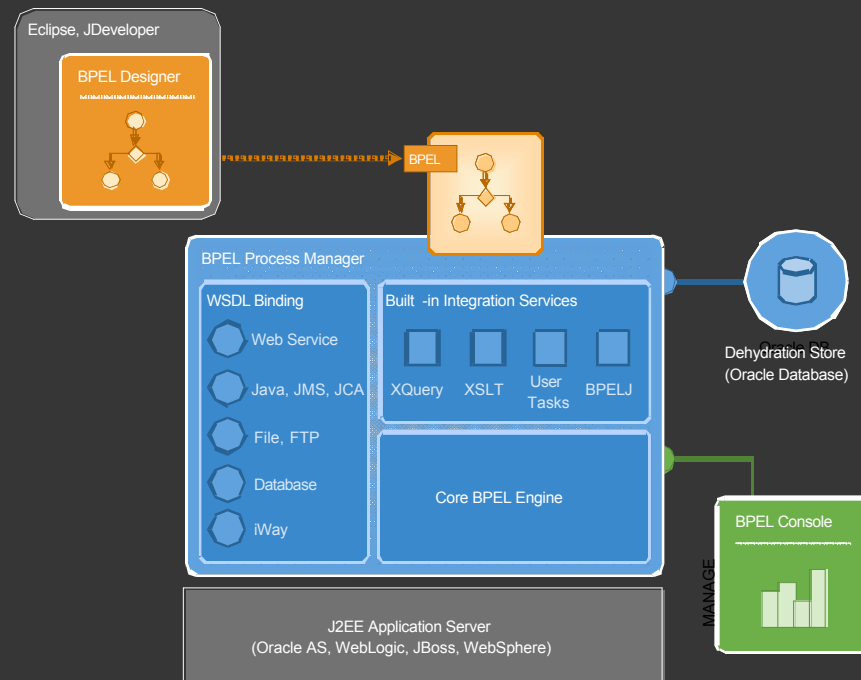
Business Process Integration



Business Process Integration

The Oracle BPEL Process Manager

Enterprise-strength infrastructure for designing, deploying and managing BPEL business processes.



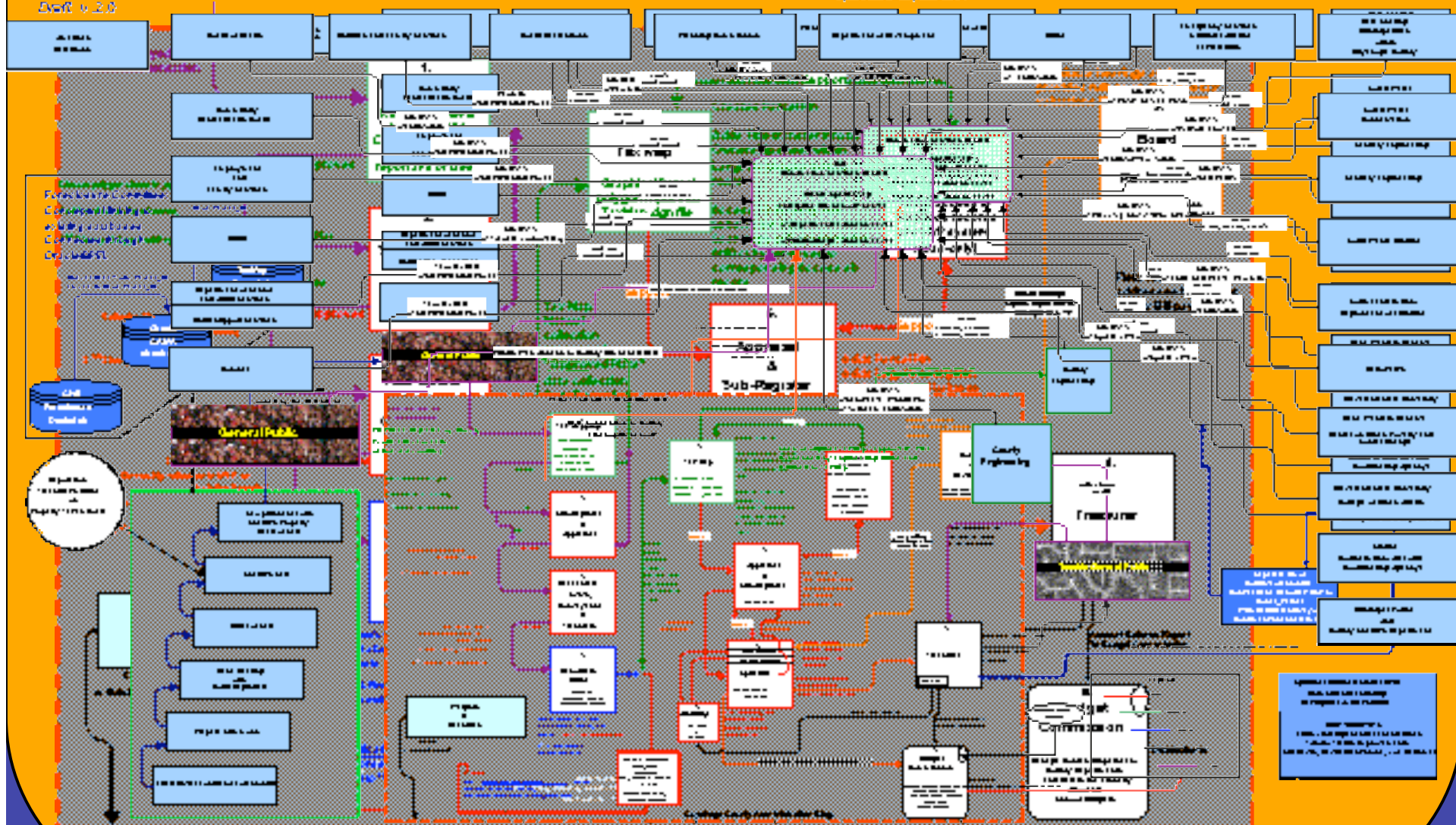
- Comprehensive and native BPEL implementation
- Easy-to-use modeling tool
- Scalable and reliable engine
- Flexible binding framework
- Rich management and monitoring
- Support for Oracle AS, WebLogic and WebSphere
- Get up and running in less than 15 minutes!

Why we need it...

Michael Baker Inc., Inc.
SWIFT v. 2.0

Overview of Copyright County Emergency GIS & Database - Emergency Pre Mapping

Copyright County GIS



Funding & ROI

- Cost Avoidance
 - Reduce unnecessary capital expenditures
 - Reduce operating costs
- Total Cost of Ownership
 - Reduce hardware and software maintenance costs
 - Future-Proof Technologies