



DOJ Office of Justice Programs OBIEE Geospatial



OVERVIEW

- Awards grants to criminal and juvenile justice field
- Incorporates grant and financial systems
- Supports BJA, BJS, NIJ, OJJDP, OVC, SMART, and other programs

CHALLENGES / OPPORTUNITIES

- Need for 20% performance improvement on spatial queries, scalability, security for mission critical data
- Resolve state when county indicates one state and congressional district indicates a different state
- Plot grantees 2 min, zoom 5 min
- Need to integrate disparate data sets
- Data integrity, accuracy issues

SOLUTIONS

- Oracle Database 12c Enterprise Edition (pending)
 - Spatial Option with GeoRaster, Network Data Model
- Oracle Fusion Middleware 11.1.1.7
 - MapViewer
- Oracle Business Intelligence Enterprise Edition
- HERE (formerly Navteq) mapping data



RESULTS

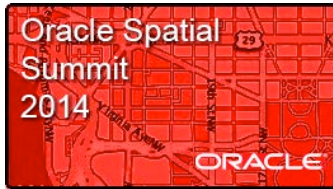
- Geocoded 2,700,000 addresses from multiple sources
- Improved the user experience with buttons and breadcrumbs
- Organization now better understands activities in context of location
- Nationwide geocoding of site locations using both address ranges and point locations
- Improved precision thereby making system more useful to the public and business



May 2014
Oracle Spatial Summit



May 21, 2014
Walter E. Washington Convention Center
Washington, DC USA



Frank Bullard

Data Manager

Chief, Information Management Services Branch

Enterprise Applications Development Division

Office of the Chief Information Officer

Office of Justice Programs

US Department of Justice



Robin Hiscock

Senior Member, SRA



US DOJ Office of Justice Programs

Grants Analysis using Oracle
BI Suite and Oracle Spatial



Vision

- Display interactive maps including detailed analysis of Grant facts with dynamic user-defined areas enabling better evaluation of Grant related data over a specific territory using statistical data from institutional sources.
- Incorporate location data in new and existing data marts.
- Integrate Geospatial components as a solution to support analysis across multiple OJP Bureaus Offices and to improve the Grant/Policy decision-making process.
- Implement of a Geospatial infrastructure that multiple applications share.

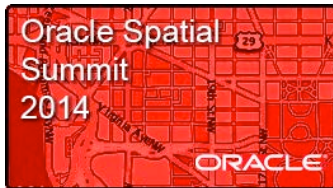




OJP Spatial Use Cases

- Compare areas receiving Grant funding.
- Grantees reporting and submission deadlines.
- Natural disaster such as Hurricane Sandy.
- Identify grantees in a given travel area.





OJP Spatial Use Cases

React to natural disaster, Hurricane Sandy

* Indicates required field. Select the desired values for the prompt below and click "Apply".

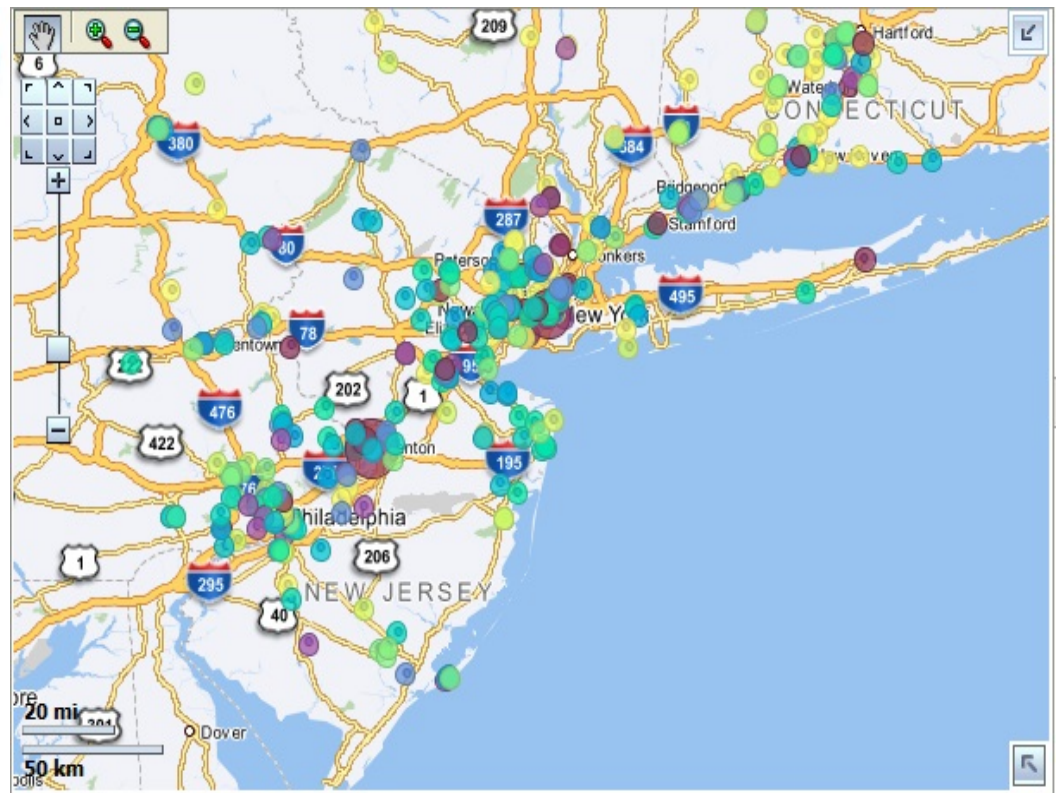
* Distance (miles)

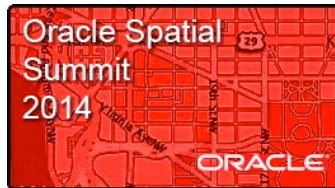
* Address

* City

* State

* Zip Code





OJP Spatial Use Cases

Compare areas

- Which tribal areas with high crime rates are applying for Grants and what funds are they receiving?
- How do tribal areas compare according to arrest rates and funding?

American Indian Desc	American Indian GEO ID	Arrest Count Sum	Obligate Family Amt Sum
Agua Caliente Indian Reservation	35399734	86,733	\$317,136.91
Osage Indian Reservation	34688107	59,062	\$8,388,160.73
Yakama Indian Reservation	26508892	41,207	\$16,648,578.12
Uintah and Ouray Indian Reservation	1416818761	22,863	\$2,407,675.23
Umatilla Indian Reservation	26497376	21,609	\$6,426,510.99
Leech Lake Indian Reservation	30957467	17,972	\$15,093,562.46
Zuni Indian Reservation	35067475	14,820	\$17,943,387.29
Allegany Indian Reservation	35488080	12,759	\$712,630.00
Colorado River Indian Reservation	35069547	12,237	\$9,464,084.03
Yankton Reservation	1414581967	9,667	\$12,654,846.36
Lummi Indian Reservation	26491221	8,650	\$10,723,824.27
Santa Clara Indian Reservation	35071601	5,168	\$17,204,008.35
Flathead Indian Reservation	34937675	4,733	\$13,475,415.23
Sisseton and Wahpeton Indian Res	30969926	4,556	\$6,237,540.82
Lanse Indian Reservation	30956457	4,402	\$4,696,739.00
Oneida Indian Reservation	32203858	4,171	\$7,979,174.01
Lac du Flambeau Indian Reservation	30961219	3,536	\$5,947,859.03
White Earth Indian Reservation	30963601	3,395	\$14,069,527.48
Swinomish Indian Reservation	26496713	3,065	\$1,470,851.89
Bad River Indian Reservation	30963557	2,977	\$1,731,765.45
Fort Peck Indian Reservation	34936747	2,974	\$22,485,903.40
Nez Perce Indian Reservation	34944791	2,551	\$6,045,002.12
Laguna Indian Reservation	35067635	2,434	\$657,648.00
Pine Ridge Indian Reservation	30970850	2,209	\$11,015,041.76
Southern Ute Indian Reservation	34874615	1,756	\$4,494,003.50

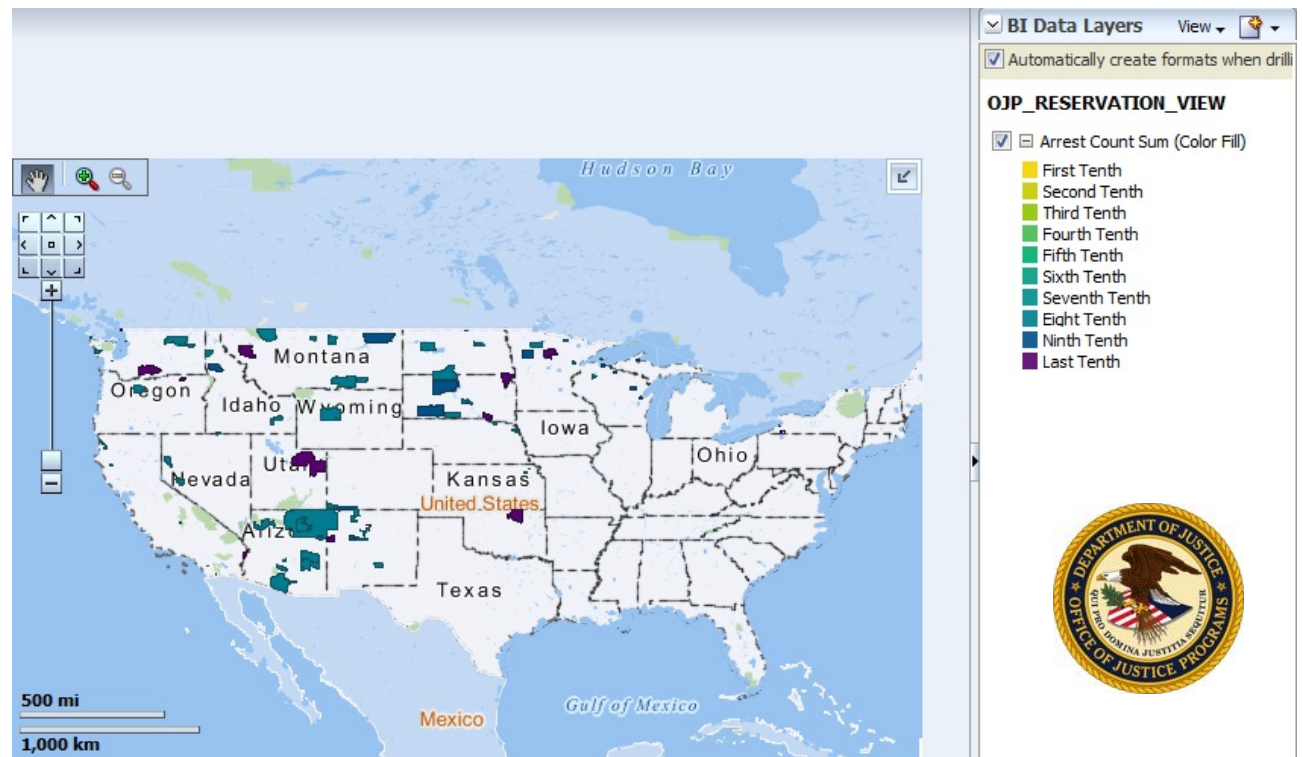
Rows 1 - 25



OJP Spatial Use Cases

Compare areas: Arrests

- How do tribal areas compare according to arrest rates?

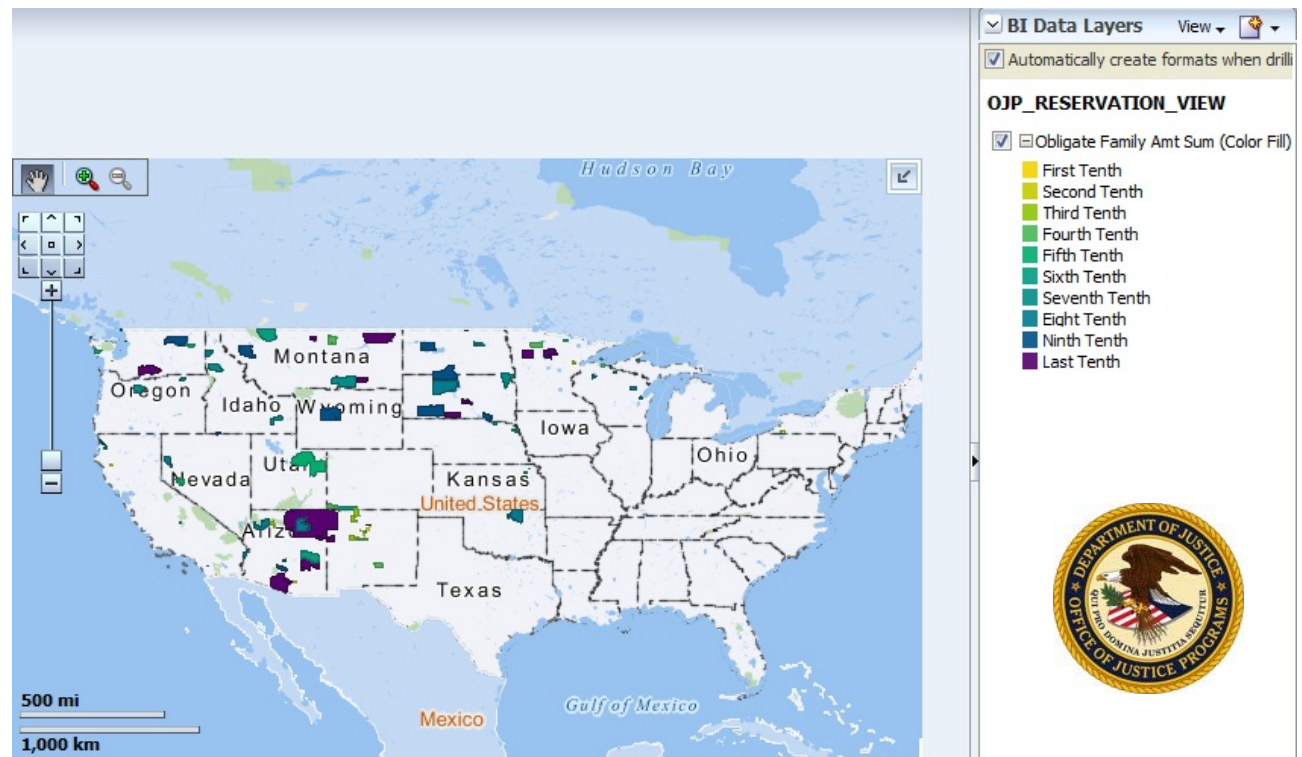




OJP Spatial Use Cases

Compare areas: Funding

- How do tribal areas compare according to Grant funding?





Spatial Reports

Compare state areas by grant awards

- Compare areas
 - State
 - County
 - Congressional District

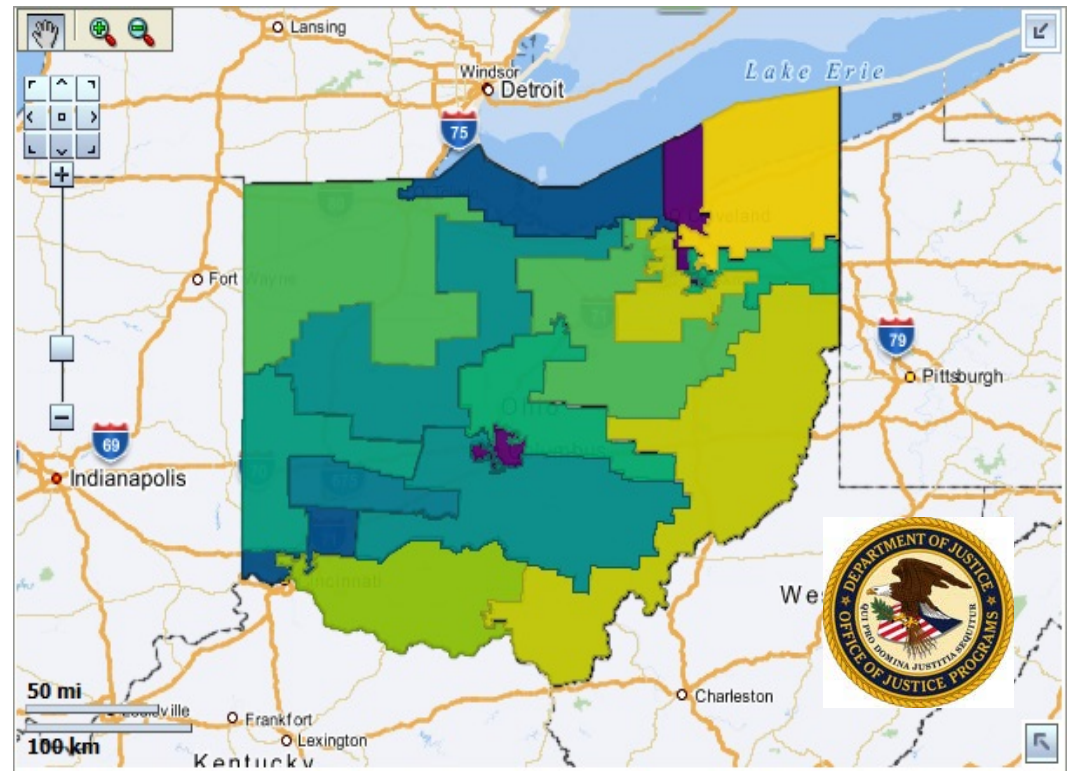




Spatial Reports

Compare district areas by grant awards
(113th Congressional District)

- Compare areas
 - State
 - County
 - Congressional District





Why OBIEE?

- High availability through a web platform
- Analytic reporting and increased user interactivity
- Bottom up approach, from data marts to data warehouse
- Graphical reporting (charts, pivots, gauges)
- Scheduled report generation
- Ad hoc analysis
- Global support and development capability





Why OBIEE?

- Intranet deployment
- Scalable
- Deploys on all platforms
- Less skills required by developers
- Less report redundancy
- Less time required to produce reports





ETL Process for Address

- Source:
 - Grantees: 2,700,000 address records
 - Financial (OCFO): 200,000 address records
- Result:
 - Unique addresses: 390,000 records
 - Street, city, state, zip
 - Locations: 92,000 records
 - Latitude/longitude
 - Areas: 4,100 records
 - Congressional district, county, and Native American Reservation





Geocode

Parameter: Match Modes

- The geocoder can perform matching algorithm based on the parameter passed along with the address object.
- The attribute “match_mode” in geocoding XML request tells the geocoder which matching algorithm to be used.

Mode	Meaning
EXACT	All fields provided must match exactly
RELAX_STREET_TYPE	Street type can be different from the official
RELAX_POI_NAME	POI name does not have to match exactly
RELAX_HOUSE_NUMBER	House number and street type do not have to match
RELAX_BASE_NAME	Base name, house number and street type do not have to match
RELAX_POSTAL_CODE	Postal code (if provided), base name, house number and street type do not have to match
RELAX_BUILTUP_AREA	Search the address outside the city specified, but within the same county, and includes RELAX_POSTAL_CODE
RELAX_ALL	Same as RELAX_BUILTUP_AREA
DEFAULT	RELAX_BASE_NAME



OBIEE Spatial Challenges

- WE to AL charset (Navteq in AL charset).
- Create map tiles to improve speed.
- Geocode locations and areas to minimize spatial calculations.
- Confusion over locations appearing in county in one state and also in Congressional District in another state.
- Update congressional district. Saved old and can report.
- Improved performance with IE10.

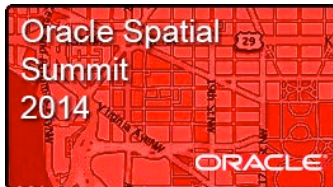




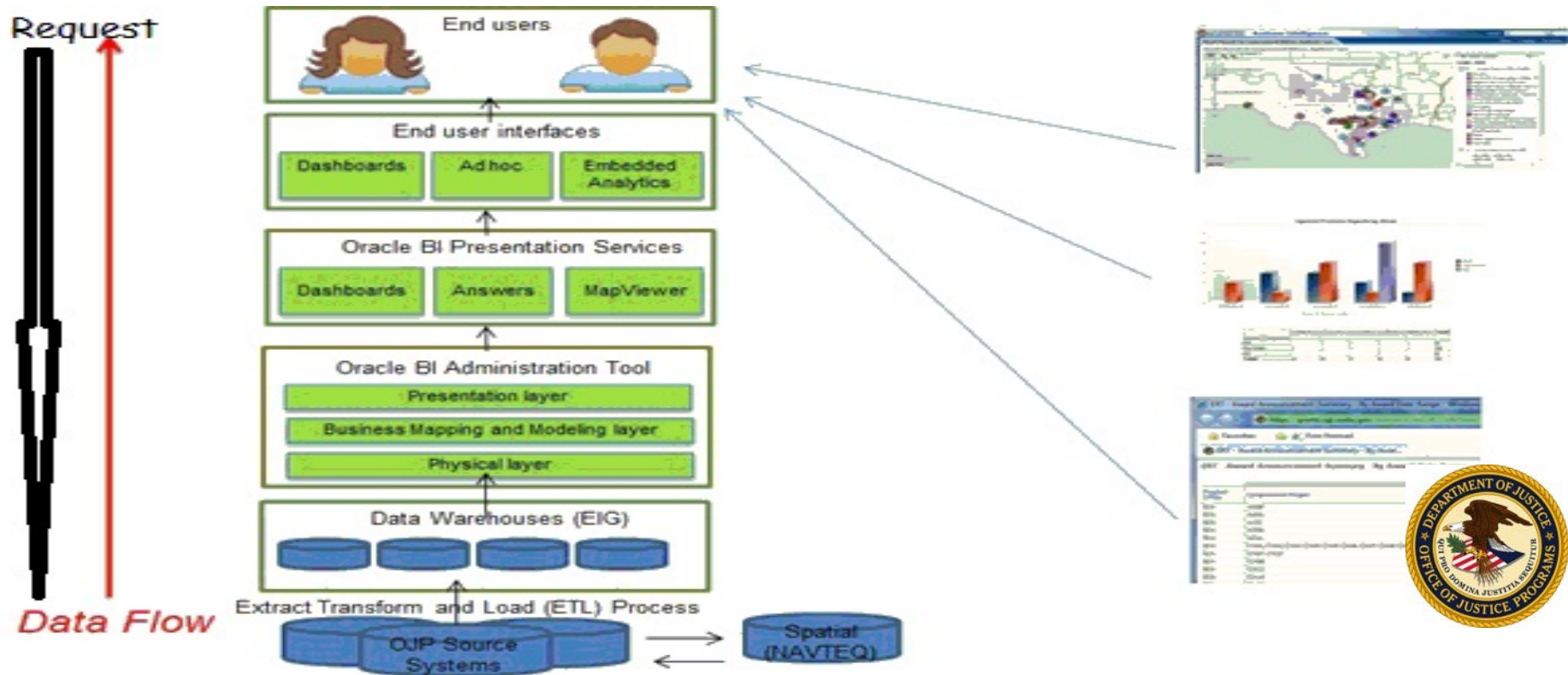
Architecture

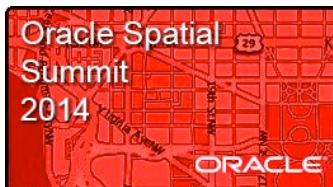
- HERE (formerly Navteq) mapping data
 - Geocode addresses
 - Identify areas
 - County
 - Congressional district
 - Native American Tribe reservation
- Addresses from multiple sources
- OBIEE with Oracle Spatial
- Map Builder
- Map Viewer



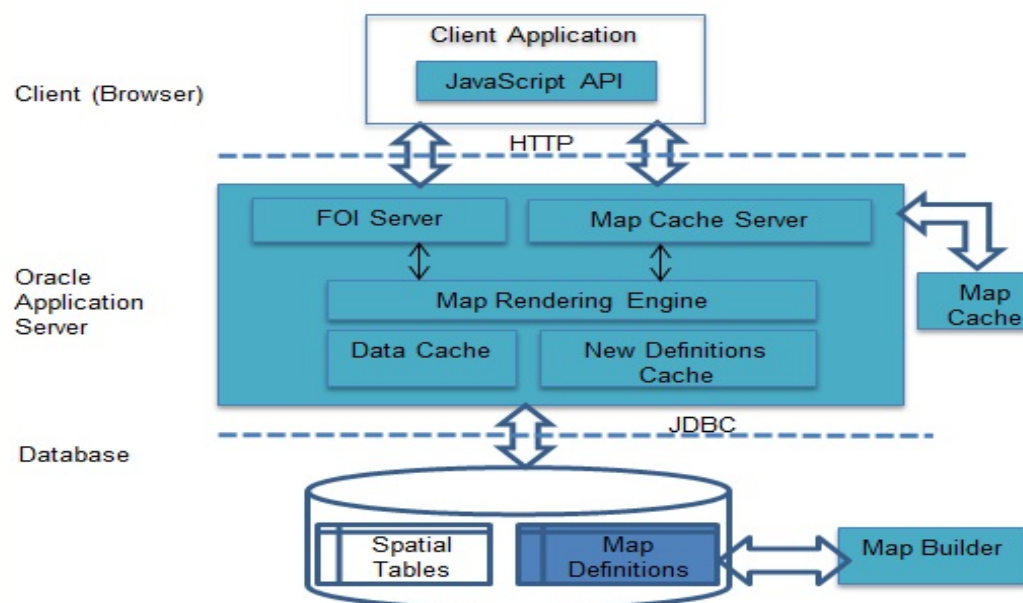


Architecture



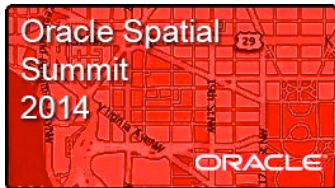


Architecture

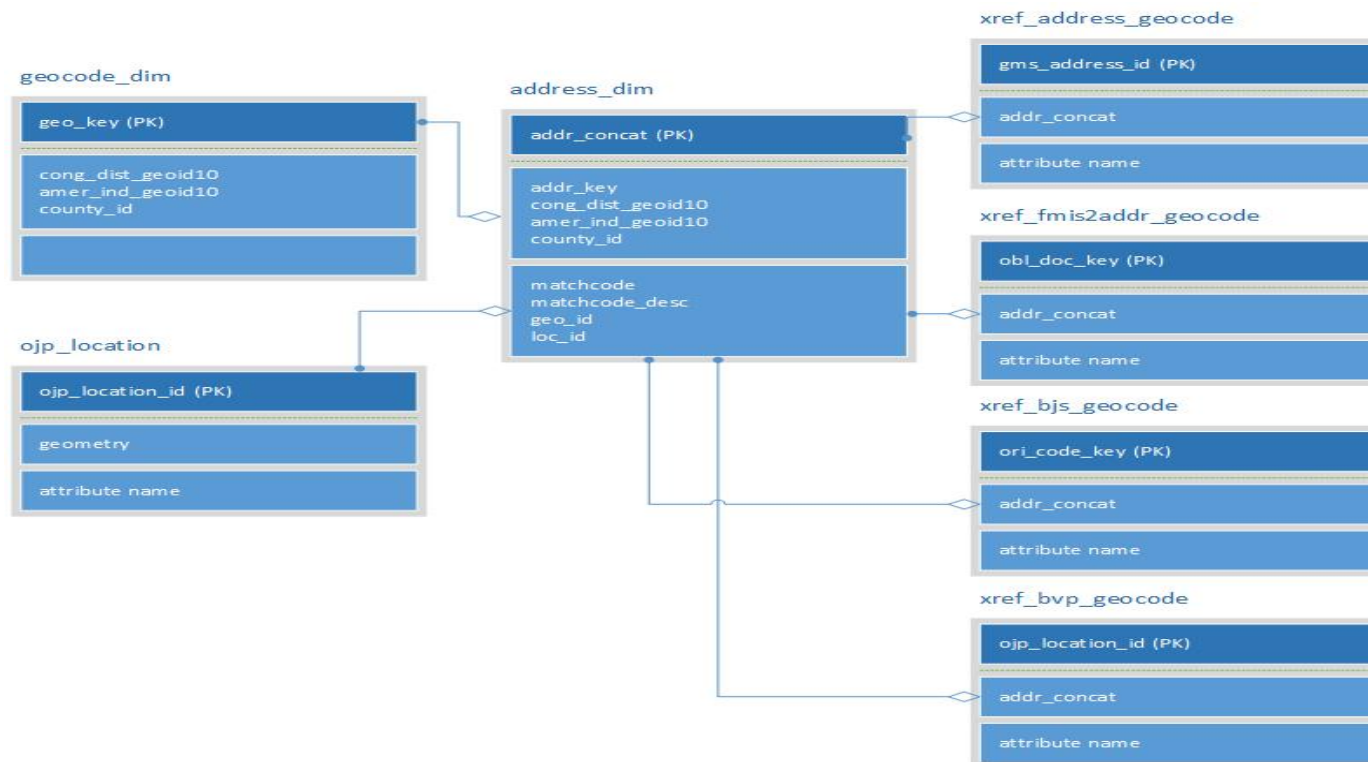


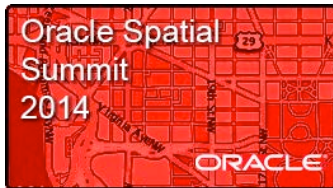
- Part of Oracle Fusion Middleware middle tier
- Includes a rendering engine
- Communicates with client web browser or application
- Performs spatial data access through JDBC calls to the database



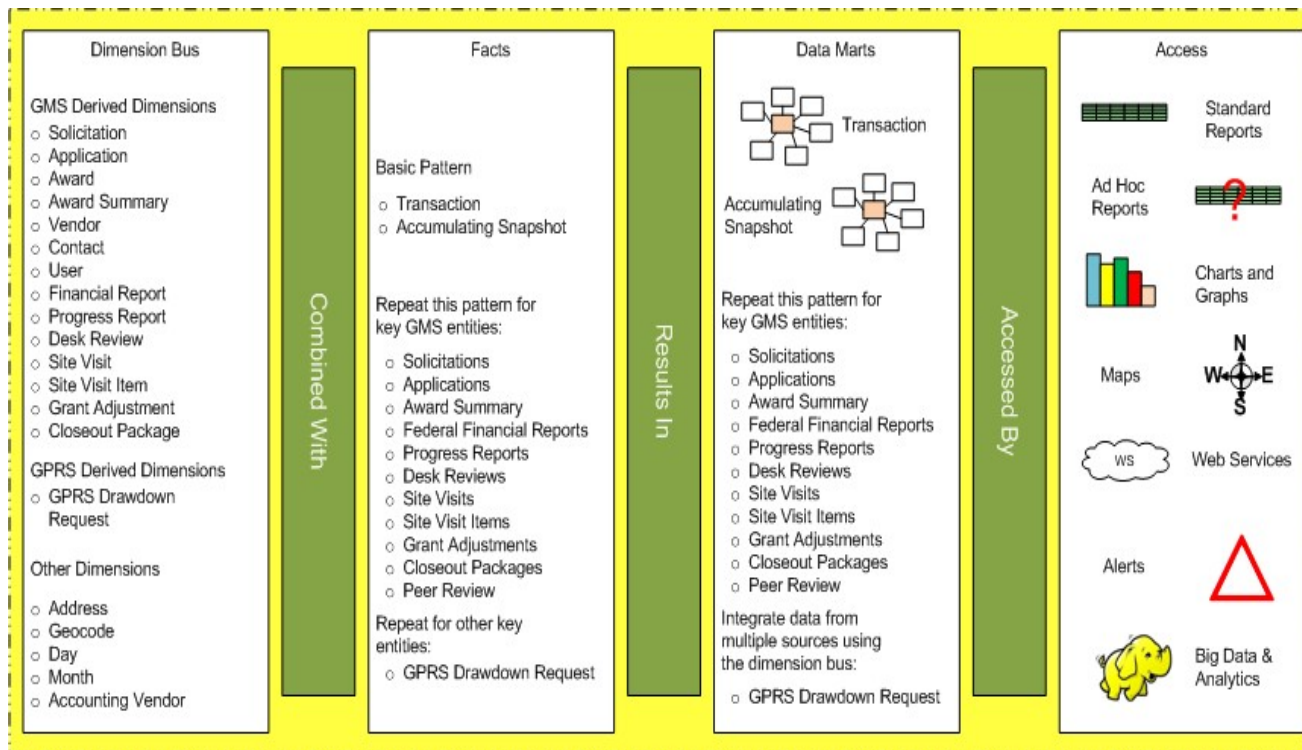


Architecture





Multiple applications share geospatial Data Mart Overview



- File Folder
- Self Service
- Standard Reports
- Award Selector



Q&A