

ORACLE®

Virtual Developer Day: Oracle Fusion Development

Watch technical presentations, demos, and participate in a hands-on lab. Join live Q&A chats online with Oracle technical staff.

Brought to you by Oracle Technology Network



ORACLE®

Oracle WebCenter Portal and ADF Development

Richard Maldonado
Principal Product Manager

Safe Harbor Statement

The following is intended to outline our general product direction. It is intended for information purposes only, and may not be incorporated into any contract. It is not a commitment to deliver any material, code, or functionality, and should not be relied upon in making purchasing decisions. The development, release, and timing of any features or functionality described for Oracle's products remains at the sole discretion of Oracle.

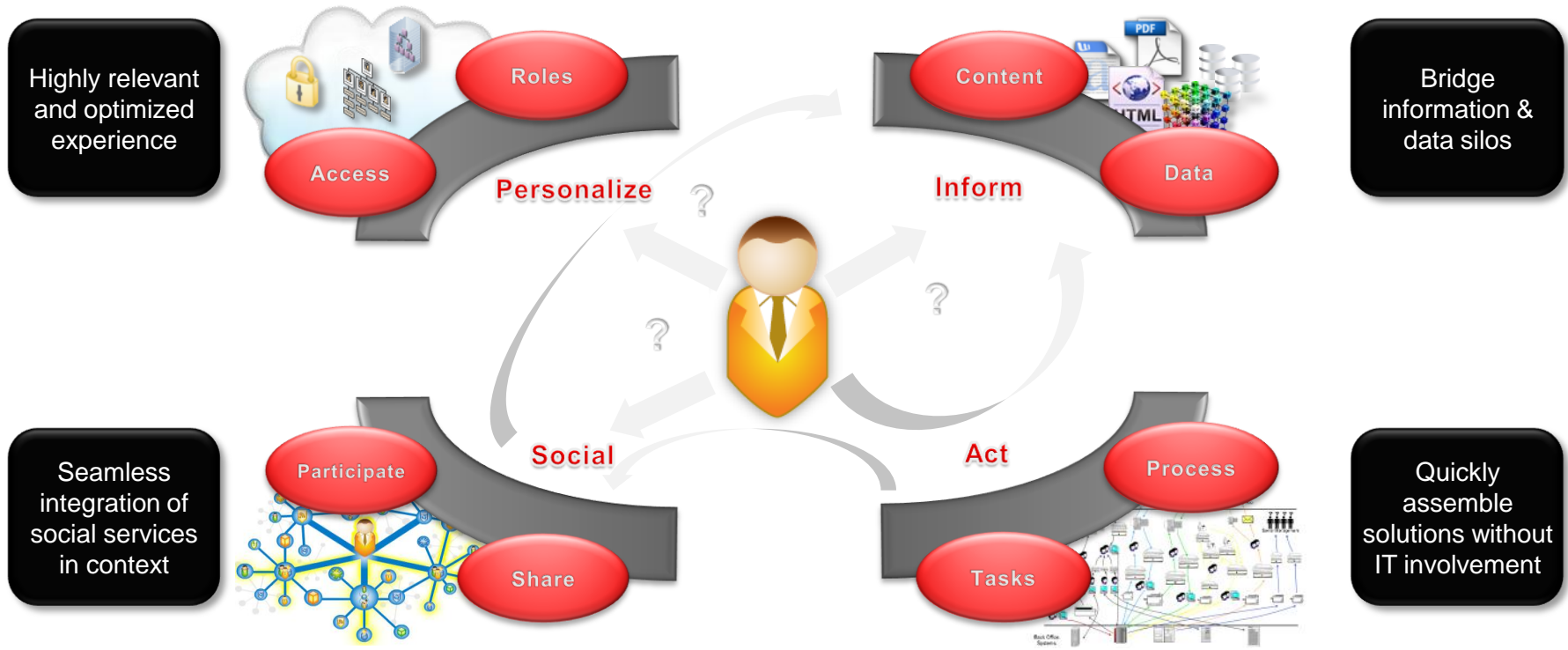
Program Agenda

- Challenges
- WebCenter Portal
 - Access
 - Information
 - Transact
 - Social
- Wrapup

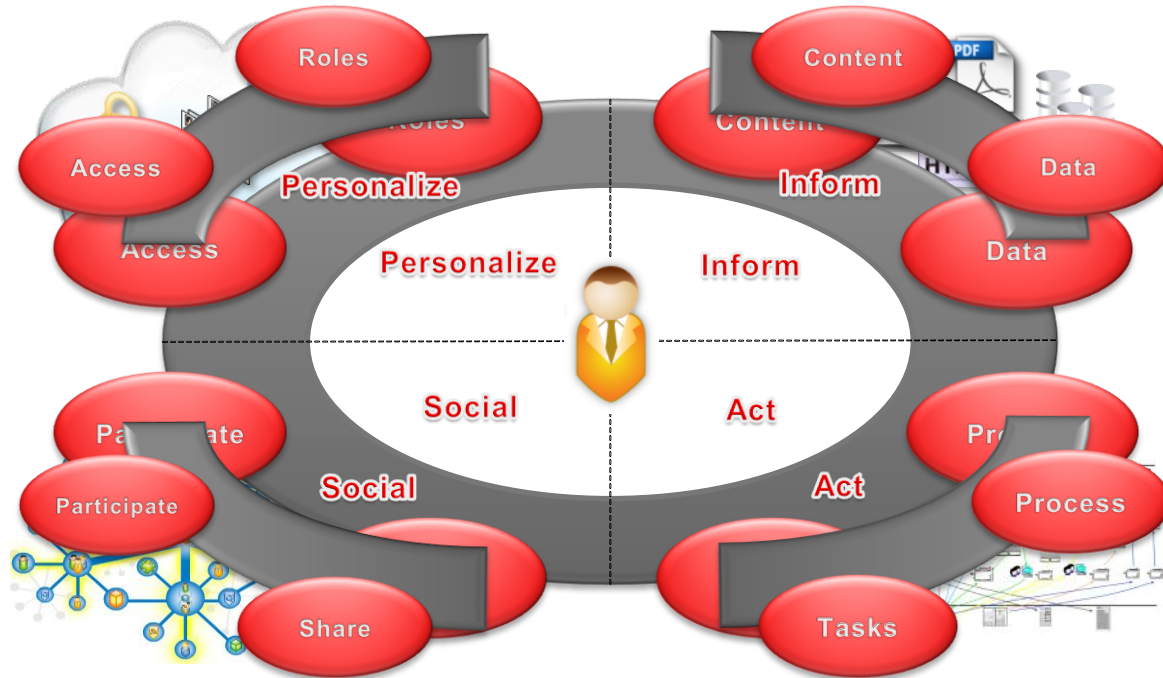


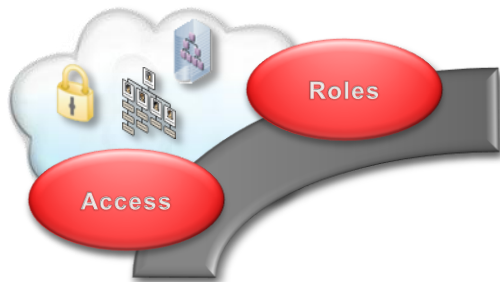
Business User Challenges

User Must Make the Connections



How to Bring it All Together?





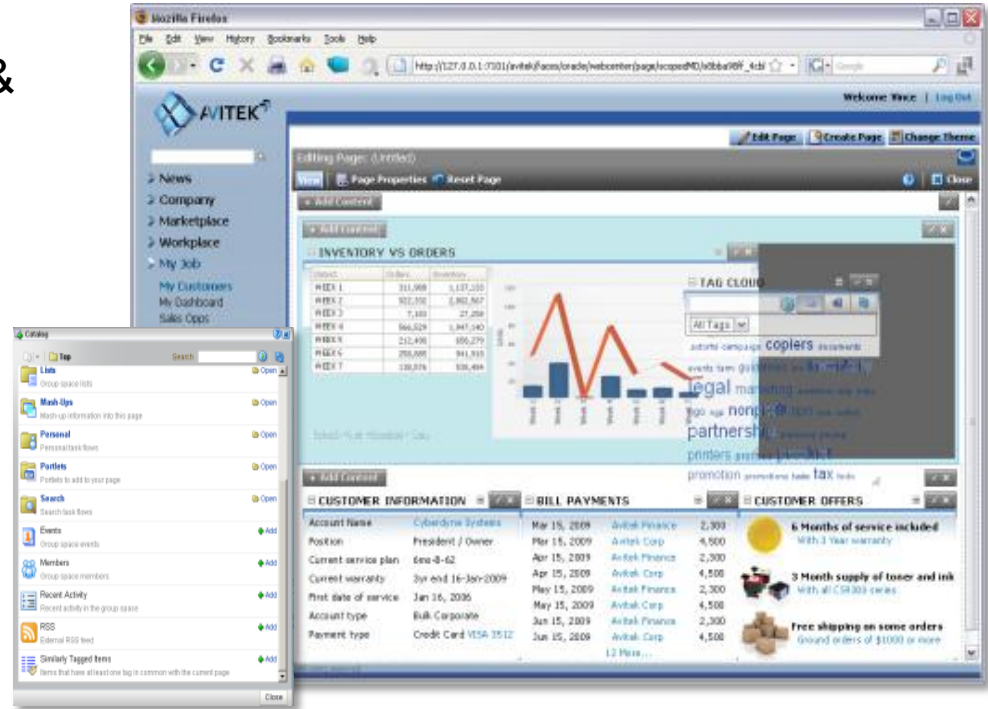
Personalize

Optimizing the User Experience

Composer & Resource Catalogue

Business Users Edit Pages at Runtime

- Role-based view of pre-packaged & integrated enterprise resources
- Add applications, content, rich media, worklists, business intelligence
- Add content from the Resource Catalog
- Wire components together



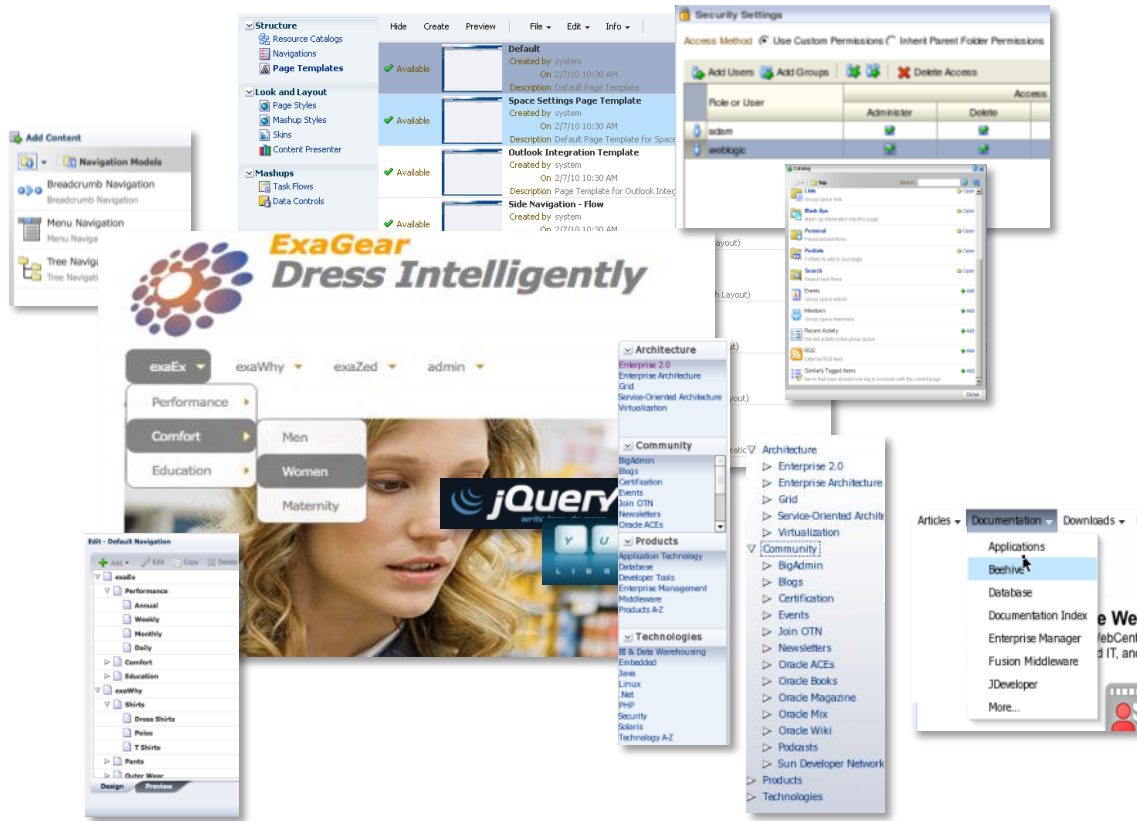
Website and User Experience Management

Powerful Intuitive Management

- Portal “Resource Manager”
 - Resource Catalogs
 - Navigations
 - Page Templates
- Delegate Administration

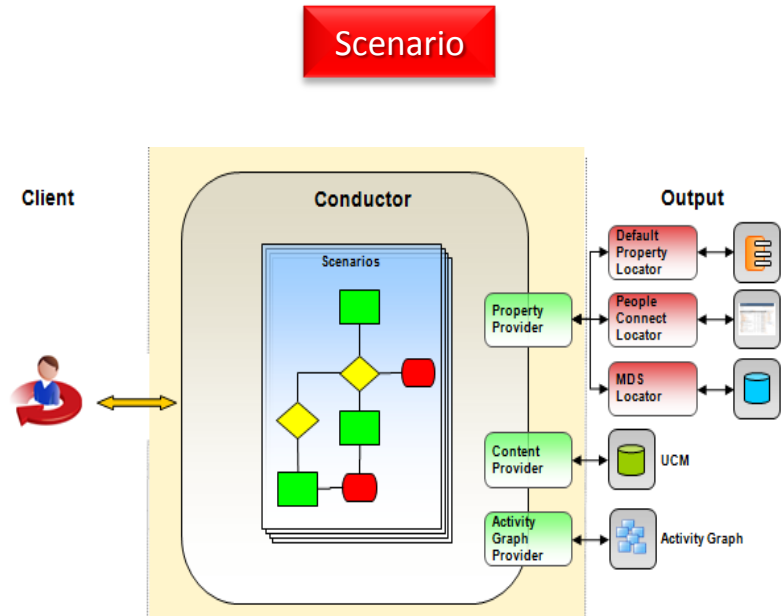
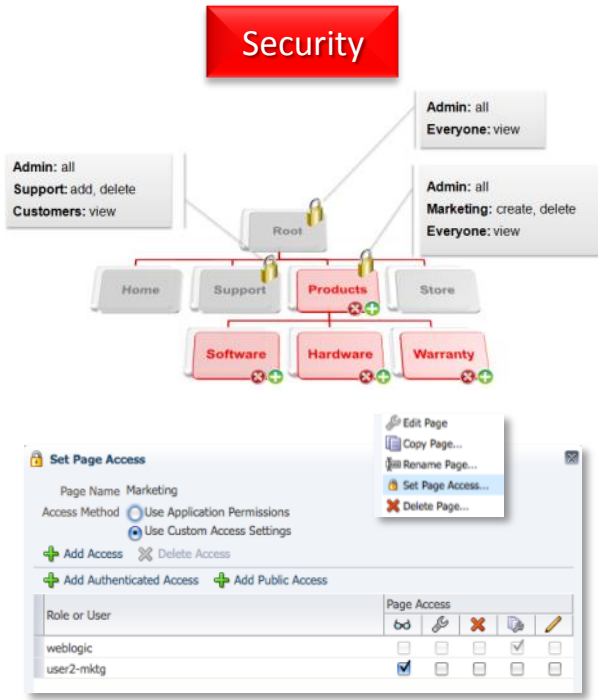
Navigation

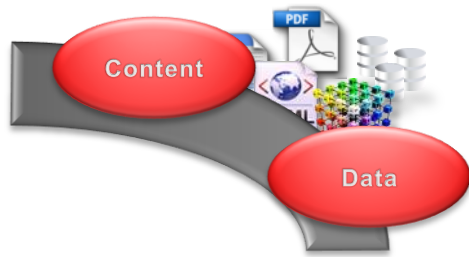
- Easily create navigation models for rendering menus and tabs
- Render navigation models using prebuilt navigation UI components (breadcrumb, menu, or tree) or utilize your favorite Javascript library.



Personalizing the User Experience

Tailor Content, Look/Feel, and Navigation based on....



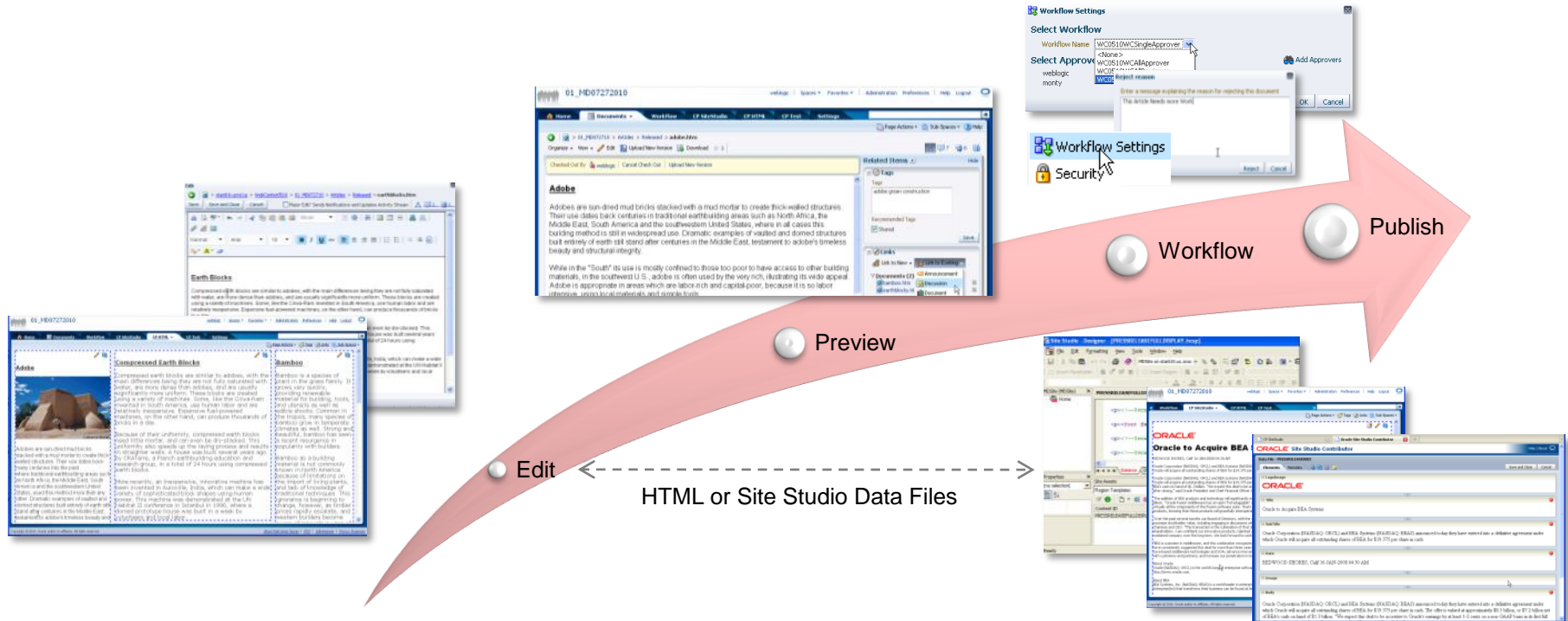


Inform

Eliminate Silos

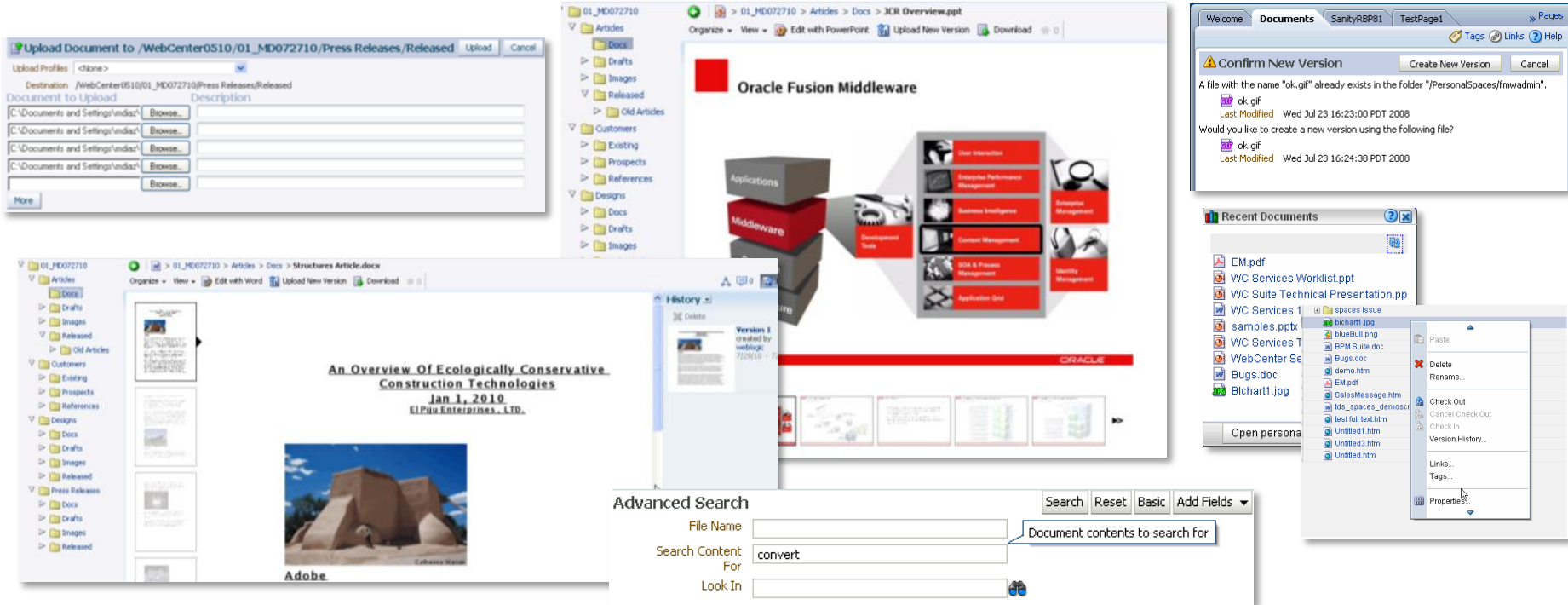
Publishing Web Content

Easily manage content-centric pages and components



Document Management Components

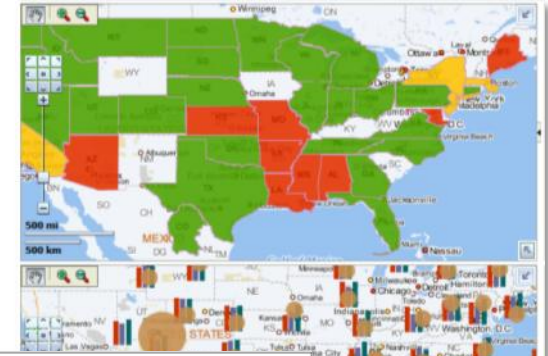
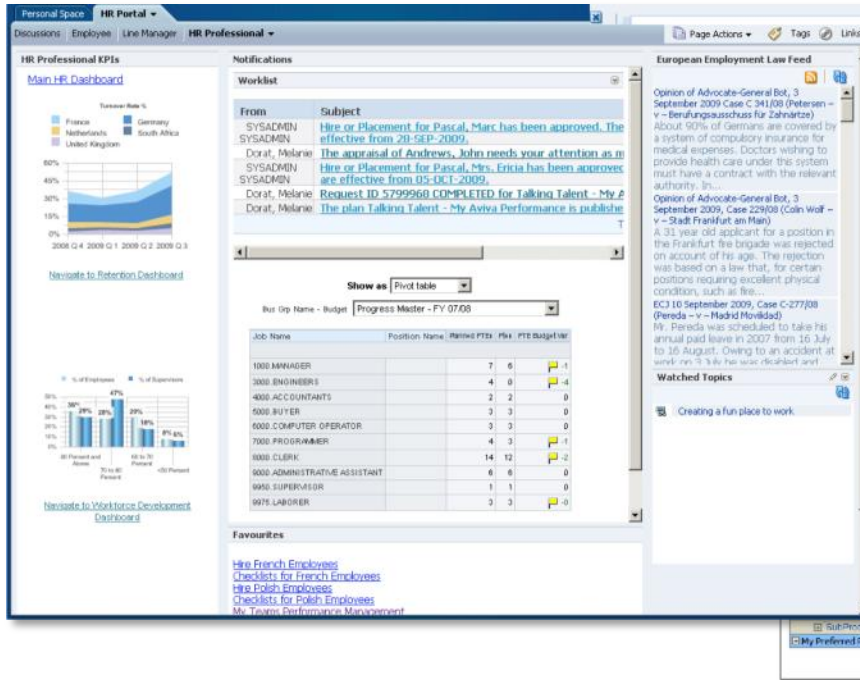
Extensive collection of UI options



ORACLE

Business Intelligence

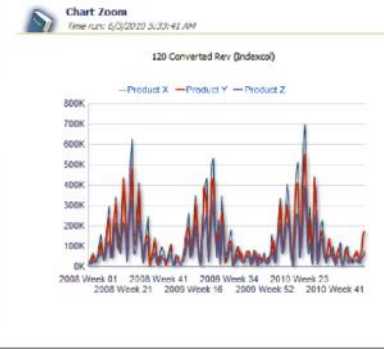
Prebuilt Integration w/ OBIEE



Order Status

Time run: 6/3/2010 5:33:41 AM

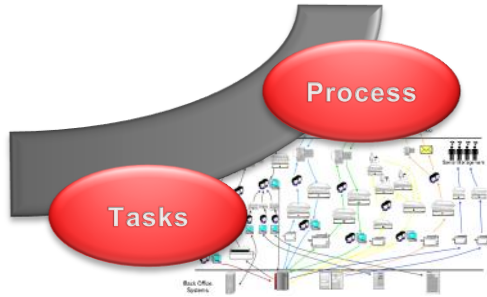
	Secure	Standard
# of Orders	3,736	3,100
Revenue	\$9,321,082	\$7,722,875
Product X	2,083	3,300
Product Y	\$5,177,283	\$8,179,741
Product Z	2,100	1,623
Grand Total	7,919	8,025
	\$19,778,866	\$20,875,969



Details

Time run: 6/3/2010 5:33:41 AM

	Converted Revenue	# of Orders
	\$22,795,240	9,404
	\$10,073,383	7,046
Y1	\$8,418,082	3,132
Y2	\$10,655,309	3,914
	\$12,522,634	4,530
	\$1,108,237	400
Sub Product 22	\$11,414,367	4,130
My Preferred Products	\$54,391,733	20,300



Act

Accelerate Application Development and Empowering the Business Users.

WebCenter Development

Tools for both Business Users and IT

BUSINESS USER

- Easily compose business solutions
- Respond to business needs immediately
- Surface enterprise applications to create custom mash-ups
- Target mobile devices and tablets



IT DEVELOPER

- Broad choice of development tools
- Leverage business user assembled scenarios
- Build reusable components
- Robust management and rapid upgrade cycles



EFFICIENCY

Improved Productivity

IT MANAGEABILITY

ORACLE

Easily Assembled by Business Users

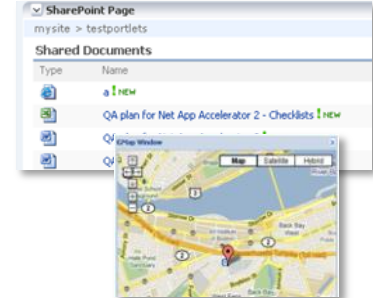
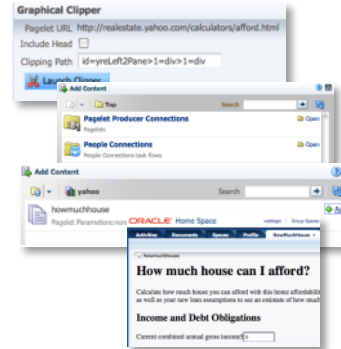
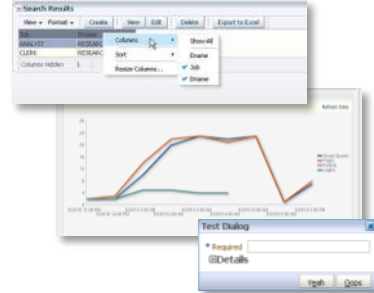
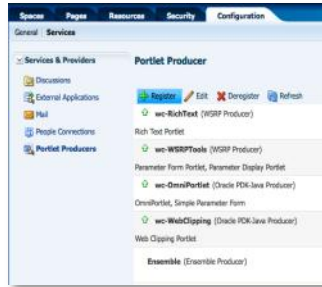
h Visualizations

Simple Mashups

Ice Catalogue



Component Integration



Portlets

- Standards support
- Runtime Registration
- Automatic portlet wiring
- Identity Propagation

Task Flows

- ADF, DVT, BPEL, WebCenter
- OOTB or custom
- Can be portletized

Pagelets

- HTTP-based services using REST & WSRP
- Authentication & provisioning
- Enhanced Reverse Proxy

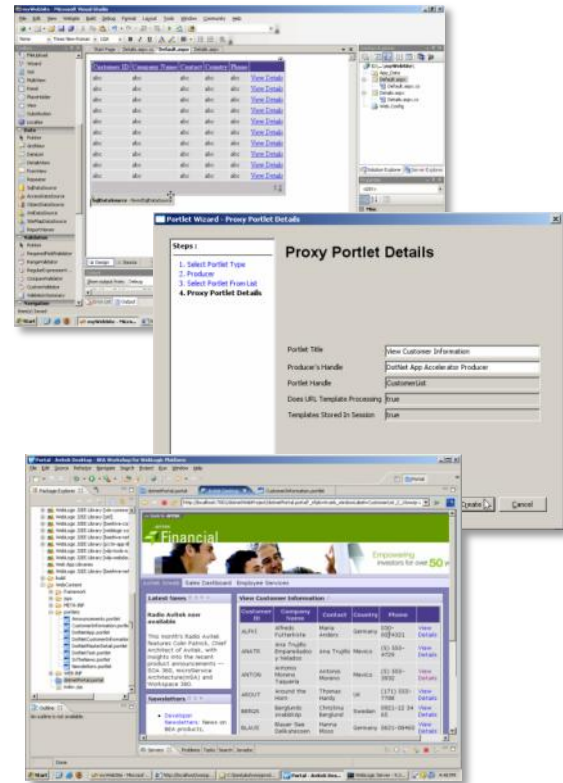
Third Party

- Google, Spring, Struts
- Microsoft SharePoint Web Parts, .NET

Application Accelerator for .NET

Bridging Java and .NET

- Direct support for ASP.NET Web Parts and applications
 - Developers use familiar tools and .NET APIs
 - Deploy the same Web Part to SharePoint or WebCenter with no code change
- Consume portlets in WSRP 1.0 or 2.0 compliant portals
- Support for advanced ASP.NET 3.5 controls
- Ajax support



Enterprise Application Integration

Proven Integrations with Core Business Applications



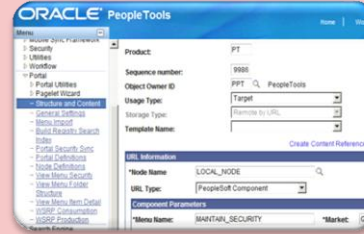
ORACLE® E-BUSINESS SUITE

- Portlet Development Kit (PDK)
- JSR 168/WSRP 1.0



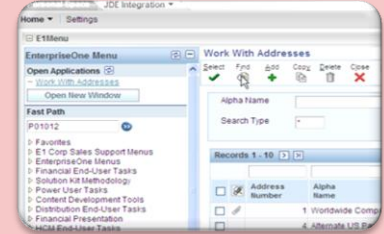
ORACLE® SIEBEL

- Web Services
- Web Engine
- WebCenter services



ORACLE® PEOPLESOFT ENTERPRISE

- Pagelet Wizard Portlets
- WSRP Portlets



ORACLE® JD EDWARDS ENTERPRISEONE

- Form Design Aid (FDA) Based Portlets
- Web Services

Business Process Integration

- **Key Capabilities**

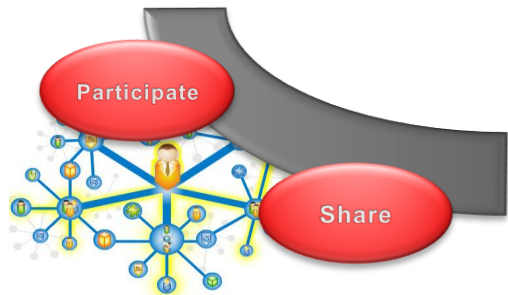
- Seamless view of processes across many applications
- BPEL Worklist integrates workflow tasks directly within the portal
- Extend process and communication to partners with B2B sites

- **Benefits**

- Unified context between process tasks, content and social interaction improves process execution
- Single access point for multiple workflow tasks improves productivity

The screenshot displays the Oracle Business Process Integration interface. It features three main panels:

- Worklist:** A panel on the left showing a list of tasks categorized by time period: Last 7 Days (4), Last 14 Days (3), and Earlier (4). The tasks listed include "Approve vacation request", "Lenovo investigates Sony battery", "Approve \$9,999 ex...", and "Invitation to join Gr".
- My Tasks:** A panel on the right showing a table of tasks. The table has columns: Account, Quote, Status, Net Revenue, and Discount. The data rows are: Citigroup (JStein, Open, \$24.5M, 10%), TC Global (JCooper, Pending, \$7M, 12.5%), TC Global (JCooper, Open, \$450k, 7.2%), Citigroup (JStein, Pending, 62M, 17%), and Tesco (JCooper, Pending, \$24.5M, 10%).
- My Quotes:** A panel at the bottom showing a table of quotes. The table has columns: Account, Quote, Status, Net Revenue, and Discount. The data rows are: KP Medical (JCooper, Open, \$24.5M, 10%), CalCorp (TGrumman, Pending, \$7M, 12.5%), Acme (ASierra, Open, \$450k, 7.2%), Coopers Tire (JStein, Closed, 62M, 17%), and HP (WFaulkner, Open, \$24.5M, 10%).



Social

Harness the “collective wisdom”
of your organization.

People Connections

Business Networks

Key Capabilities:

- User profiles to display info about one's role or self
- Visualization of user's network
- Monitor, manage, receive and give kudos
- Recent Activities - View the most recent changes to documents, discussions, feeds, announcements

Benefits:


- Drive workplace productivity and team effectiveness
- Users can quickly find and connect with the right people



Enterprise “Wall” for Sharing and Discovery


30 Days

Options



Christian Hauser's photo has been updated

5 seconds ago



Christian Hauser added the document PS3_WebCenter_New_Feat

PS3 New Features Presentation

PS3 Release Focus – Portals!

- Holistic tooling around Portal Development
- Portal Standards support
- Multi-Language Portals

Share something with Everyone

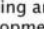
What's on your mind?

Attach: File | Link

Publish

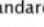
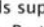
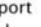


All Events

Options

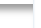


Paul Pedrazzi Here's the document for everyone to use in the upcoming demo.

Task White Paper.pdf

10 min ago • 2 Comments • Like

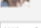


Paul Pedrazzi I just completed the Alpha Project I'll post the information before 5pm today. Every will be able to send this out ASAP

8 hours ago • 10 Comments • You and 2 others like this • Unlike


You and 2 others like this

View all comments



Monty Carpenter I'll look for the update when it arrives and comment then.


10 hours ago



Vicki Col Ok. No Problem.


10 hours ago

Write a Comment...



Opportunity **Project Alpha** for customer **MotoSystems** has been re-assigned to **Bill Smith**

8 hours ago • 0 Comments • Like



Note To Do List has been created for opportunity **Milan Pizza**

10 hours ago • 0 Comments • Like

The screenshot shows a web browser window with the Adobe website. A red dashed circle highlights the 'Adobe' logo and the paragraph starting with 'While in the "South" its use is mostly confined to those too poor to have access to other building materials...'. The browser's address bar shows 'http://www.adobe.com/'. The page content includes a navigation bar with links like 'Home', 'About', 'Contact', and 'Support'. The main content area features the Adobe logo and a paragraph about the history and use of adobe bricks. The right sidebar contains a 'Comments' section with several user comments and a 'Write a comment...' form.

Activity Graph

Contextual or Context-Free Recommendations



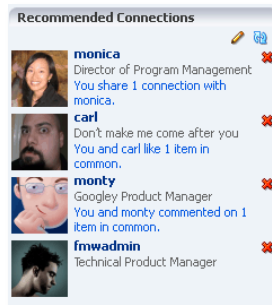
- **Similar Items**

People who worked on this document also worked on these documents, wikis, blogs and topics



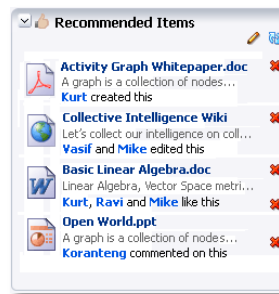
- **Similar Spaces**

People who participate in this Space also are active in these other Spaces



- **Recommended Connections**

People who work on and like the same things as you.



- **Recommended Items**

Personalized recommendations of Spaces, documents, wikis, blogs, and topics

WebCenter Portal

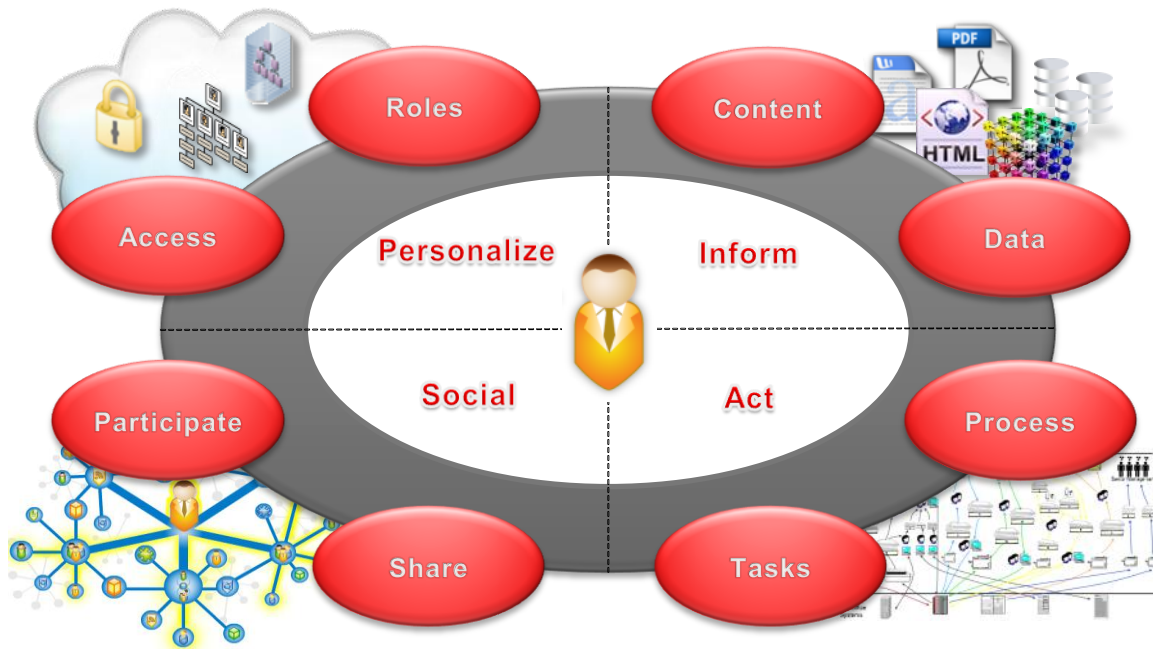
The Comprehensive Portal Platform

Business Ready

- ✓ LDAP integration
- ✓ Role, Group, or Scenario based personalization
- ✓ Site Navigation
- ✓ Delegated Administration

Social Enterprise

- ✓ People Connection
- ✓ Social Graph / Recommendations
- ✓ Activity Stream
- ✓ User self publishing



User Enablement

- ✓ 100's of prebuilt components
- ✓ Web Content and Documents
- ✓ Business Intelligence components

Integration Ready

- ✓ Siebel, Peoplesoft, JDEdwards,
- ✓ SOA/BPM
- ✓ Business Mashups
- ✓ Component Development choice

ORACLE

Thank you and enjoy the rest of the sessions

For more information on Webcenter please visit <http://www.oracle.com/webcenter>

Please join us a the following social media channels



@oraclewebcenter



<http://www.facebook.com/webcenter>



<https://blogs.oracle.com/webcenterportal/>



<http://www.youtube.com/oraclewebcenter>

