

ORACLE®

Virtual Developer Day: Oracle Fusion Development

Watch technical presentations, demos, and participate in a hands-on lab. Join live Q&A chats online with Oracle technical staff.

Brought to you by Oracle Technology Network



ORACLE®

Oracle BI and ADF Integration

Rashmi Raj, Product Manager

Safe Harbor Statement

The following is intended to outline our general product direction. It is intended for information purposes only, and may not be incorporated into any contract. It is not a commitment to deliver any material, code, or functionality, and should not be relied upon in making purchasing decisions. The development, release, and timing of any features or functionality described for Oracle's products remains at the sole discretion of Oracle.

Agenda

- Oracle Business Intelligence
- Oracle Business Intelligence and ADF Integration
 - Fusion BI View Component
 - Programmatic VO against BI Server
- Oracle BI Composer
- WebCenter Spaces Integration (Collaborative Analytics)
- Demo

Agenda

- Oracle Business Intelligence
- Oracle Business Intelligence and ADF Integration
 - Fusion BI View Component
 - Programmatic VO against BI Server
- Oracle BI Composer
- WebCenter Spaces Integration (Collaborative Analytics)
- Demo

Oracle Business Intelligence

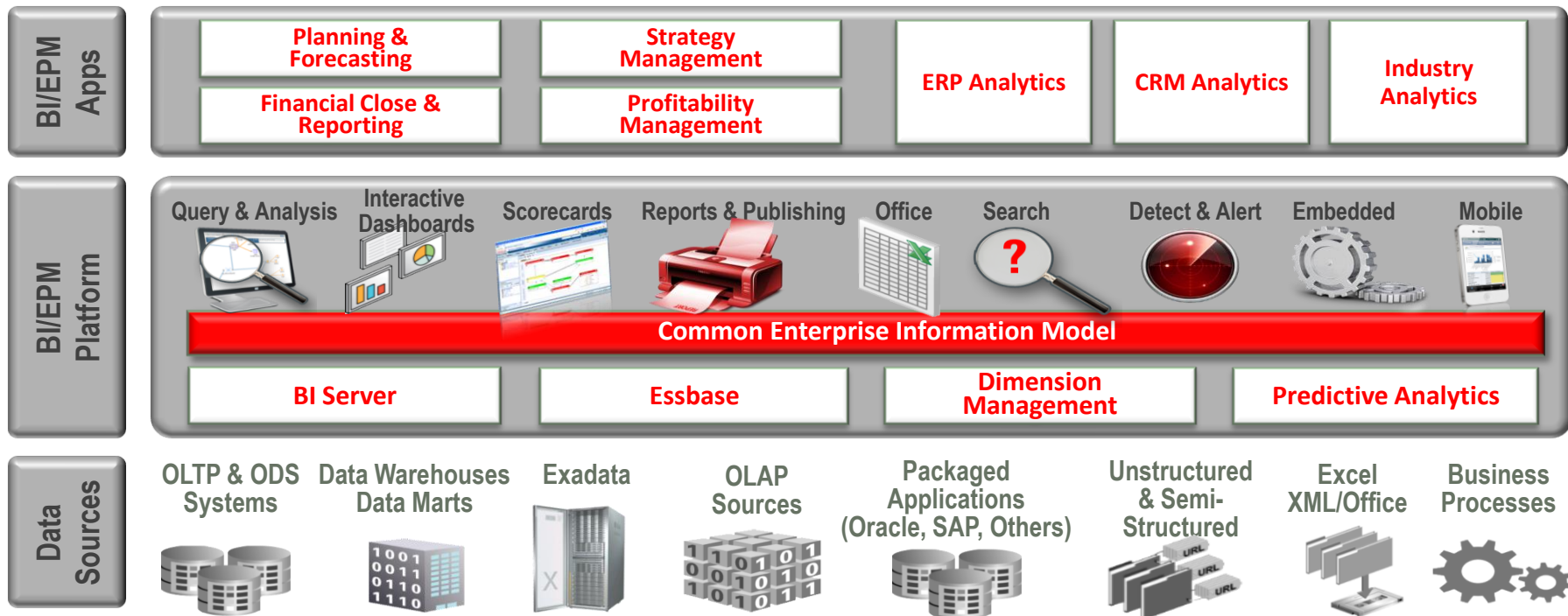
Overview

- Comprehensive BI functionality built on a unified infrastructure
- Powerful user experience
- Unified business model
- Hot-Pluggable
- Best-in-class scalability, reliability and performance



Oracle BI / EPM Portfolio

Complete, Integrated, and Open



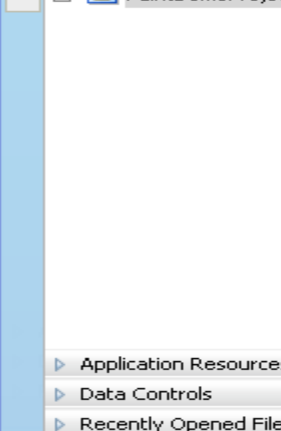
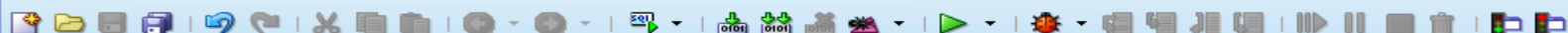
Agenda

- Oracle Business Intelligence
- Oracle Business Intelligence and ADF Integration
 - Fusion BI View Component
 - Programmatic VO against BI Server
- Oracle BI Composer
- WebCenter Spaces Integration (Collaborative Analytics)
- Demo

Oracle BI And ADF Integration

Fusion BI View Component

- Browse Oracle BI Catalog and drag and drop reports, views, dashboards onto ADF page
- Pass context to the embedded components from ADF page
- Raise contextual events from embedded content to the ADF app
- Personalize content via drills, sorts, pivots etc. (saved to MDS)
- Skin embedded content using ADF skins
- Pass JPS user identity and APPLCORE session context to BI EE



Project Properties - D:\JDeveloper\mywork\PaintDemo\PaintDemoProject\PaintDemoProject.jpr

Search

- Project Content
- ADFM Settings
 - ADF View Settings
- Ant
- Business Components
- Compiler
- Dependencies
- Deployment
- EJB Module
- Extension
- Javadoc
- Java EE Application
- JSP Tag Libraries
- JSP Visual Editor
- Libraries and Classpath
- Resource Bundle
- Run/Debug/Profile
- Technology Scope**

Technology Scope

☐ Use Custom Settings [Customize Settings...](#)

☒ Use Project Settings

Available Technologies:

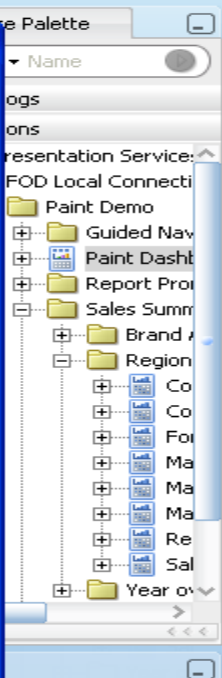
- ADF Business Components
- ADF Desktop Integration
- ADF Faces
- ADF Library Web Application Support
- ADF Page Flow
- ADF Swing
- Ant
- BI ADF Components**
- Database (Offline)
- EJB
- HTML
- Java
- JavaBeans
- JSP

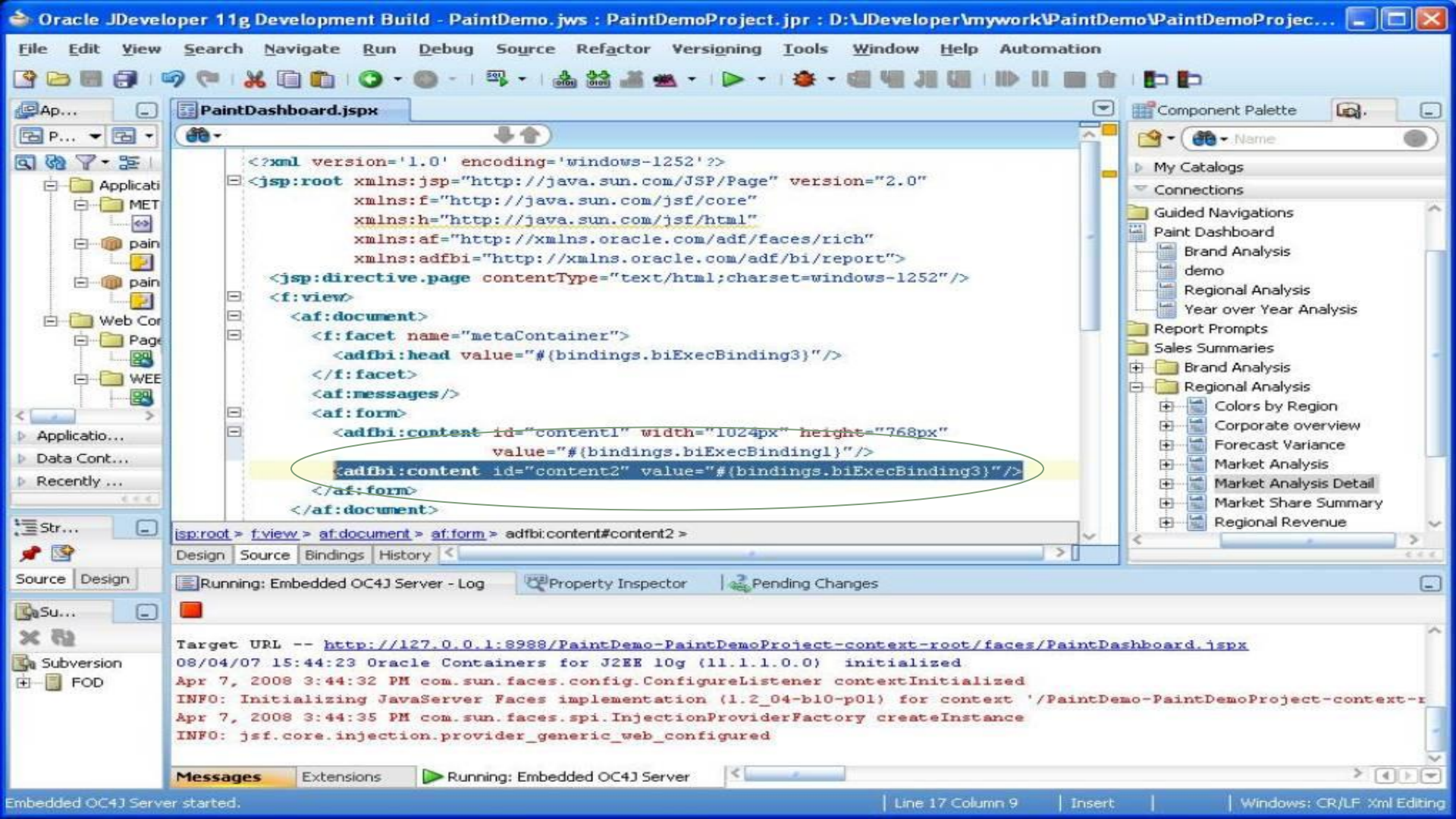
Selected Technologies:

Technology Description:

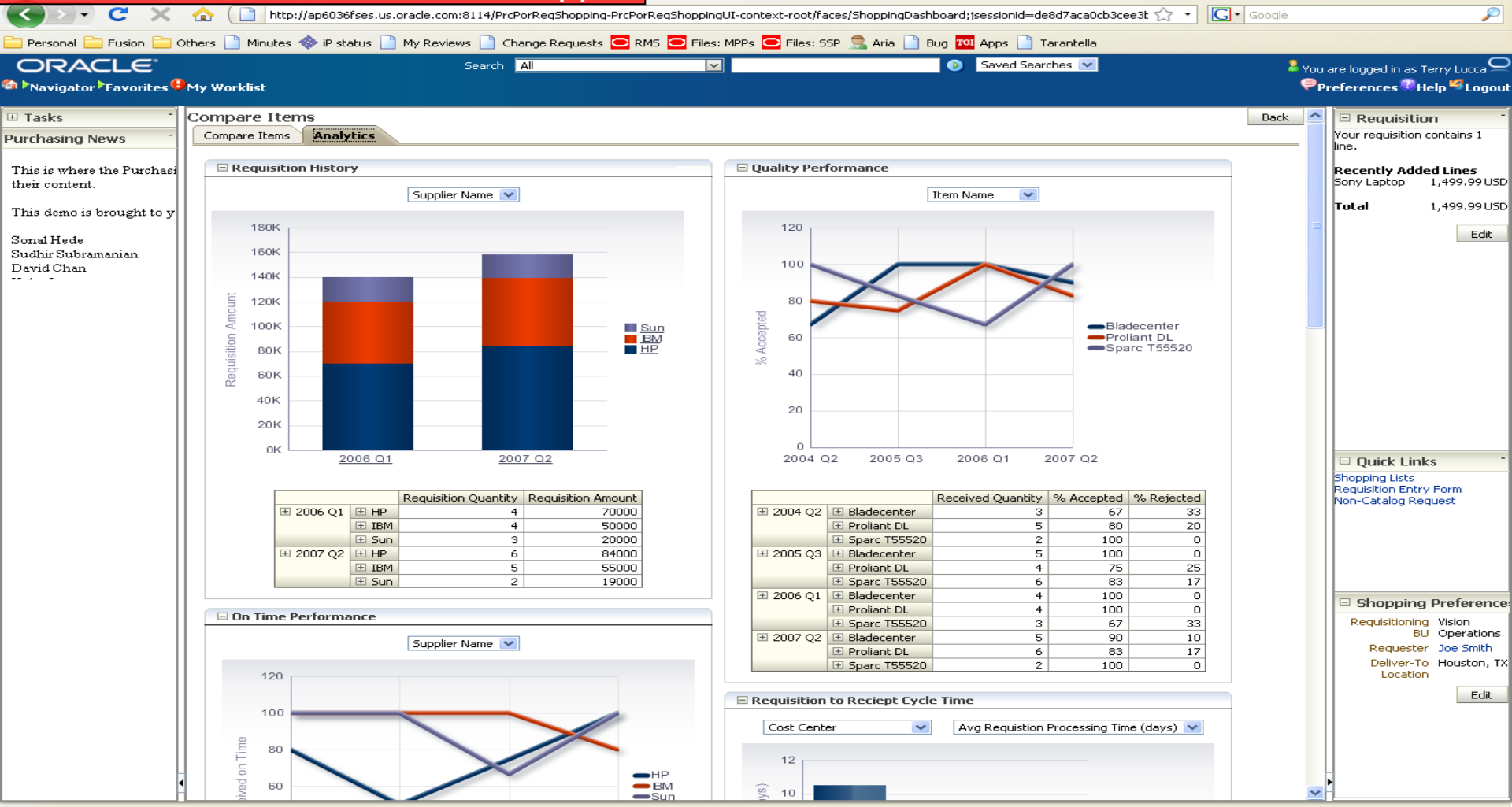
BI ADF Components enables ADF Faces web applications to embed Oracle BI reports and dashboards.

[Help](#) [OK](#) [Cancel](#)

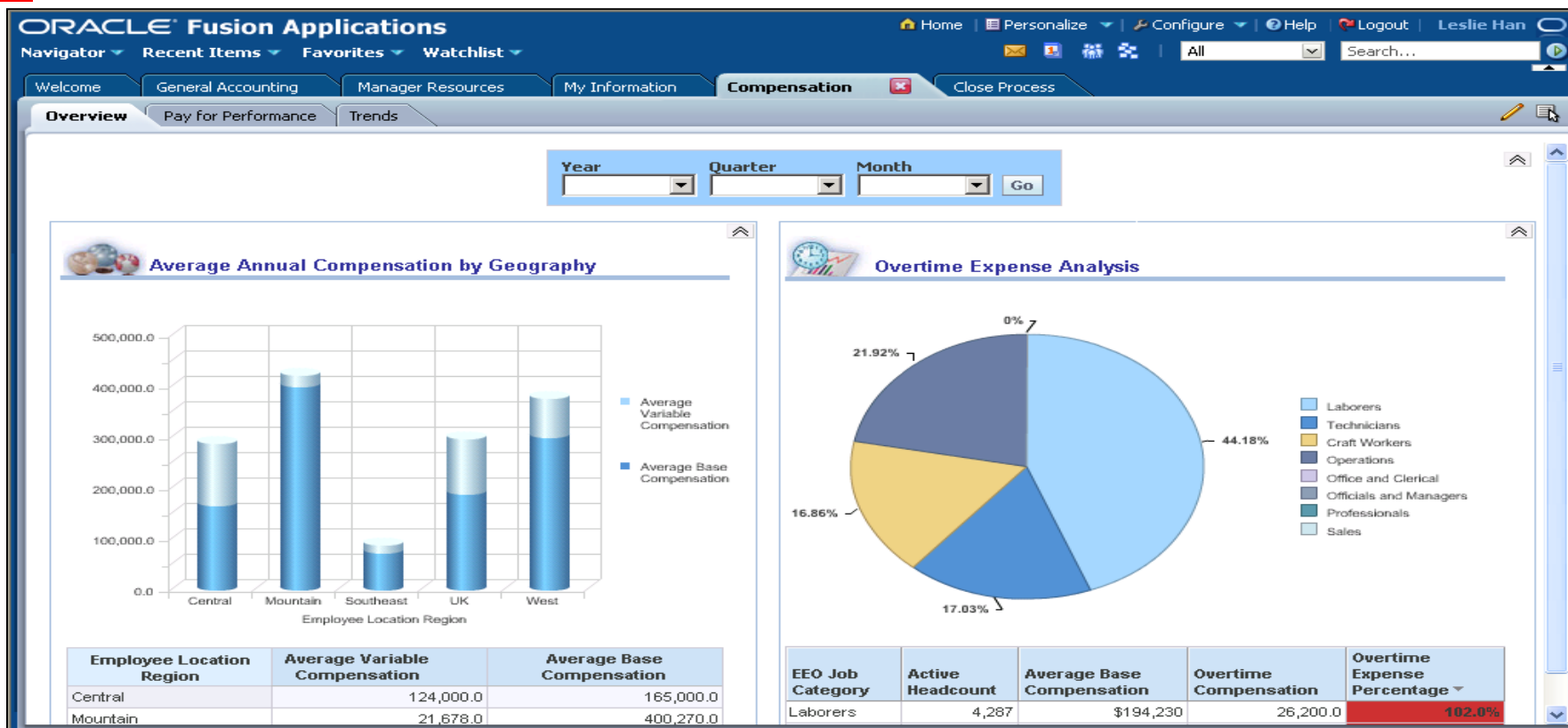




BI Embedded in Procurement App



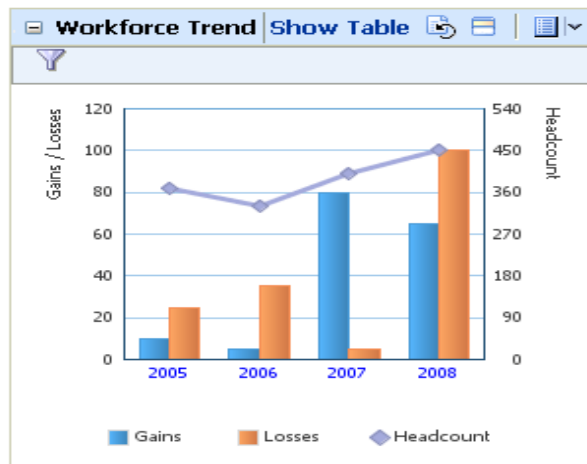
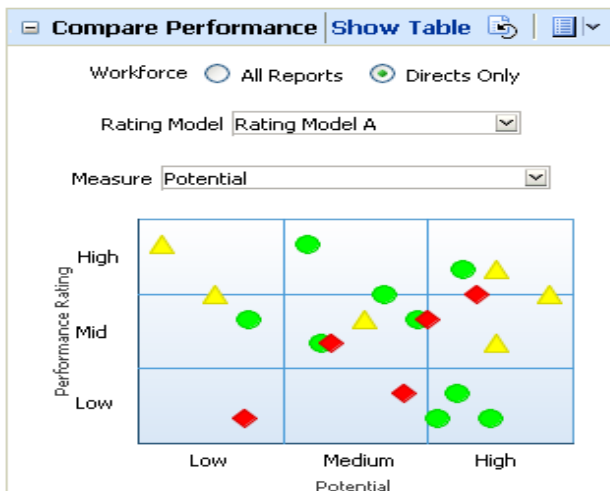
Embedded BI in Fusion Applications



Embedded BI in Fusion Applications

Embedded Analytics in Transactional Pages

Hiring						
Applicants Ready to Hire						
Ready for Onboarding Onboarding Progress						
Actions	View	Format				
Work Start Date	Name	Type of Hire	Department	Hiring Manager	Job	Submitted By
15-Feb-2008	John Wolfmaier	Employee	Sales	Roy Narayan	Pre-Sales Consultant	Brenda Barnes
15-Feb-2008	George Hong	Contingent Worker	Development	Amit Stickley	Software Engineer 1	Karl Chlang
29-Feb-2008	Jenny Smith	Employee	Finance	Yushi Remington	Expenses Clerk	Brenda Barnes

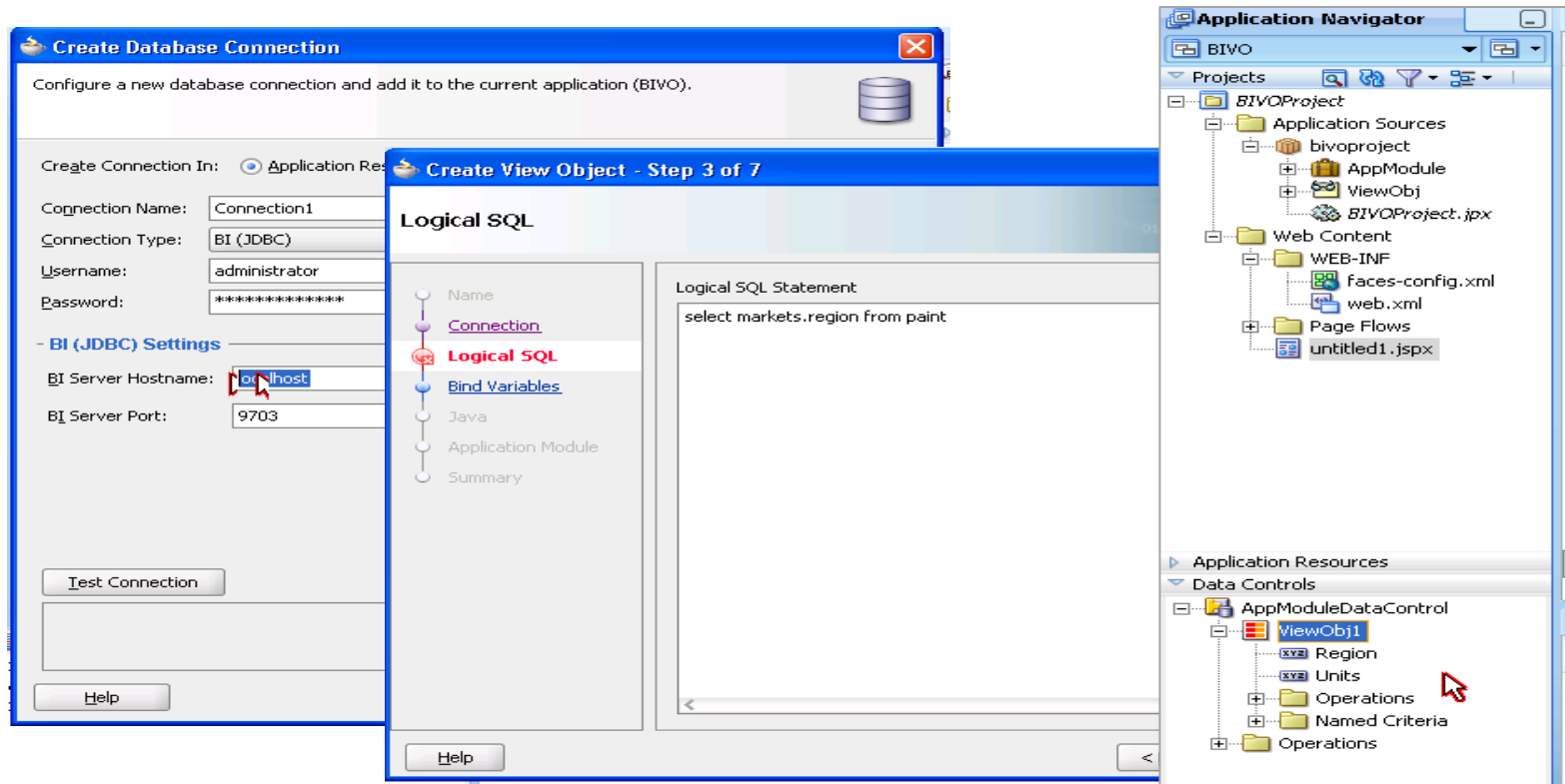


Oracle BI And ADF Integration

Logical SQL View Object

- Ability to make direct database connection (JDBC) with Oracle BI Server
- Issue Logical SQL against BI Server
- Display results in ADF rich/faces component
- Embed BI data inline into transactional view
- Passes JPS User identity and Applcore session id to BI Server

Fusion BI Logical SQL View Object



Agenda

- Oracle Business Intelligence
- Oracle Business Intelligence and ADF Integration
 - Fusion BI View Component
 - Programmatic VO against BI Server
- **Oracle BI Composer**
- WebCenter Spaces Integration (Collaborative Analytics)
- Demo

Oracle BI Composer

Wizard based report creation

- Simple-to-use, checkbox-driven wizard tool for Answers Report creation and customization
 - Remove all navigational complexity from interface
 - Allow non technical users to create and edit reports with no training.
- Simplified UI built in ADF leveraging BI metadata APIs
 - Libraries available in JDeveloper and Web Center
- Default content creation and editing when using Accessibility mode in Answers

BI Composer Functionality

Wizard based report creation

- Ability to create tables, pivots and charts
- Add prompts and filters
- Modify formatting with sections, grouping and conditional formatting
- Ability to preview report while creating
- Save report into the BI Web Catalog for sharing and reuse

BI Composer

BI Composer


Select Columns Select Views Edit Table Edit Graph Sort and Filter **Highlight** Save





Create Analysis: Highlight


Apply conditional formatting highlights to table



Back Next Submit Cancel

☒ **Formatting**

 Indicates Incomplete Format (not applied to report)

Status	Column	Threshold	Color	Action
	Revenue	150,000		
	Revenue	180,000		

 Add Column Format ▾

☒ Preview  

BizTech

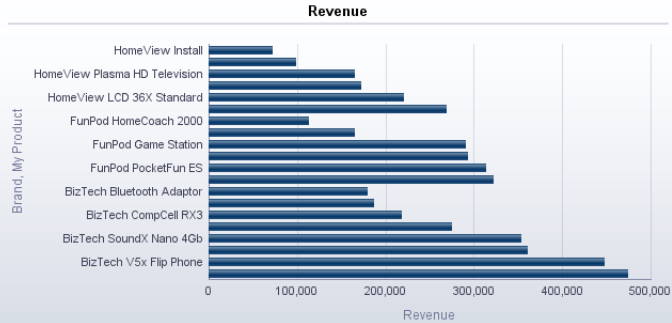
My Product	Revenue
Bluetooth Adaptor	180,172
MP3 Speakers System	187,480
CompCell RX3	218,630
KeyMax S-Phone	274,850
SoundX Nano 4Gb	354,140
Touch-Screen T5	361,443
V5x Flip Phone	448,456
MicroPod 60Gb	474,729

FunPod

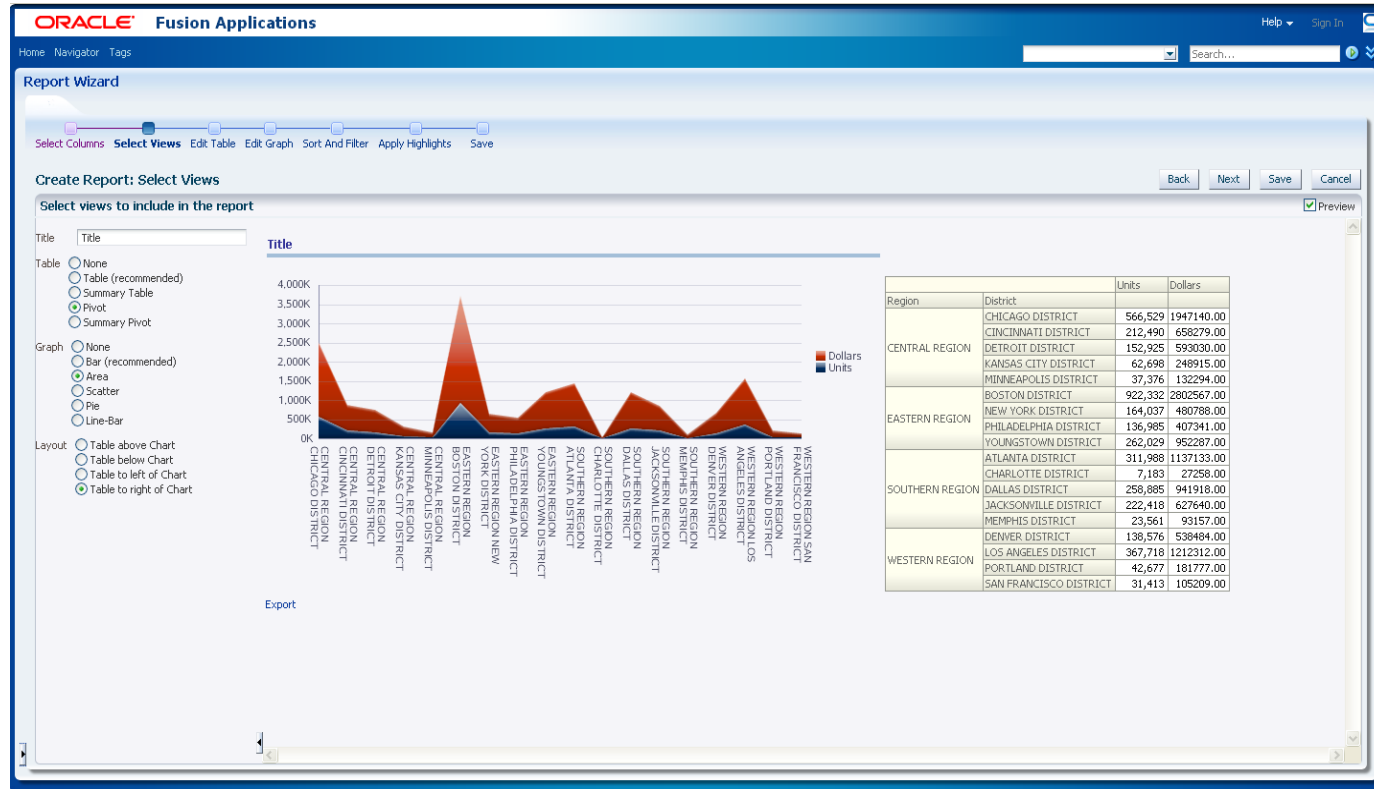
My Product	Revenue
HomeCoach 2000	113,106
MaxiFun 2000	165,839
Game Station	291,285
7 Megapixel Digital Camer	293,012
PocketFun ES	314,018
MPEG4 Camcorder	322,740

HomeView

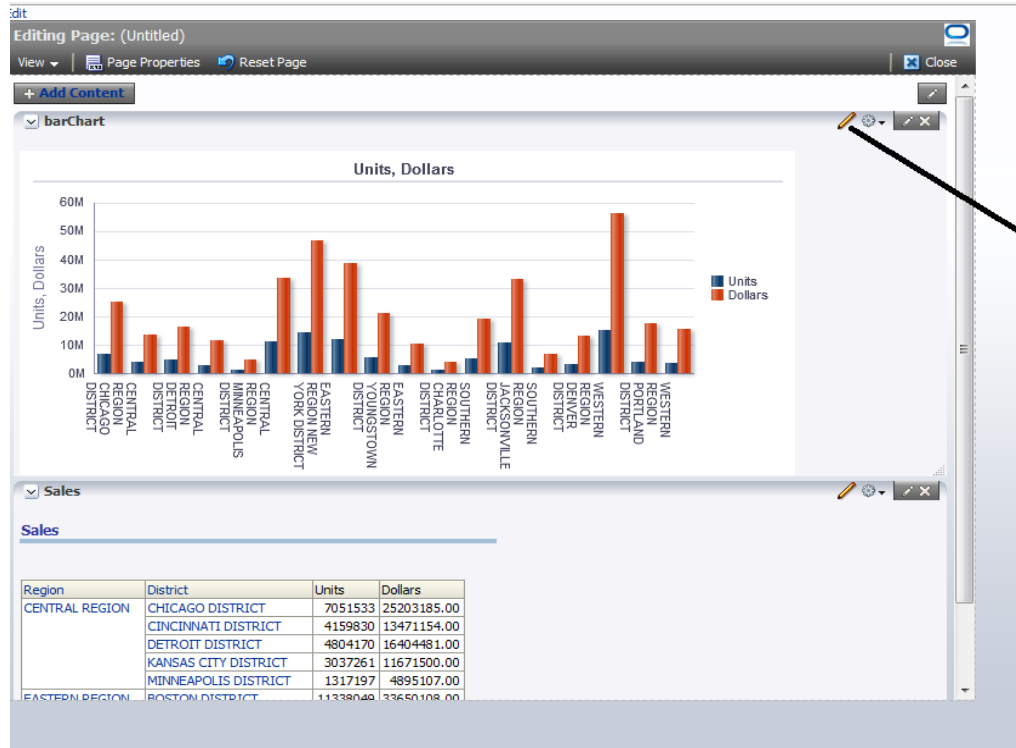
My Product	Revenue
Install	73,697
Maintenance	96,787
Plasma HD Television	165,466
LCD HD Television	172,425
LCD 36X Standard	221,517
Tungsten E Plasma TV	268,799



BI Composer



BI Composer



Edit Report to launch
Report Wizard

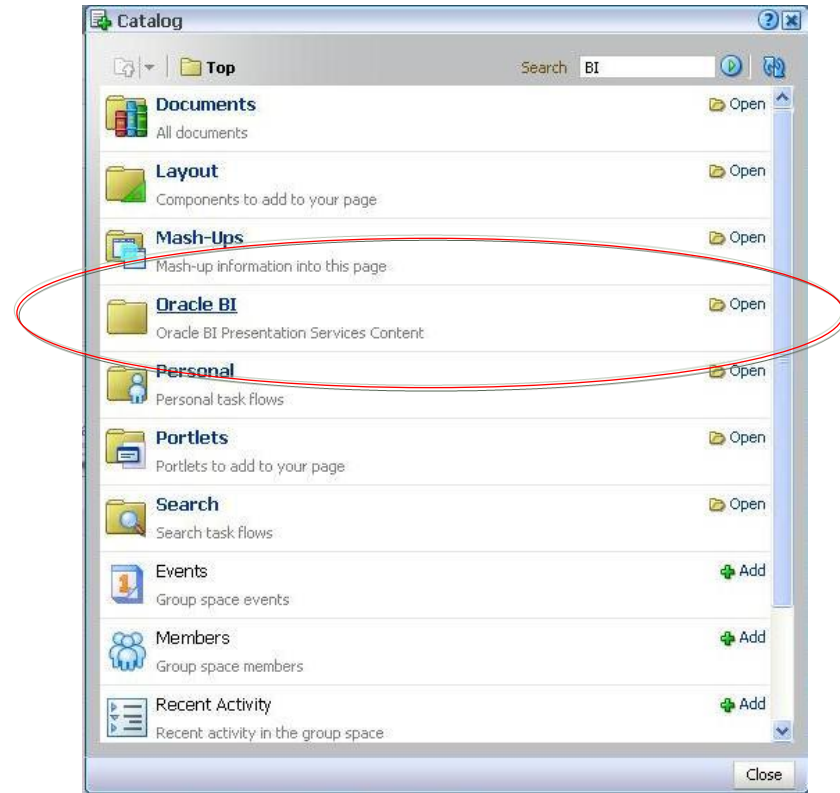
Agenda

- Oracle Business Intelligence
- Oracle Business Intelligence and ADF Integration
 - Fusion BI View Component
 - Programmatic VO against BI Server
- Oracle BI Composer
- **WebCenter Spaces Integration** (Collaborative Analytics)
- Demo

Oracle BI and WebCenter Integration

Run-time Integration

- Provide Oracle BI plug-in for WebCenter catalog
- Support run-time edit
- Support context passing
- Skinning and Personalization (MDS)
- Enable Oracle BI to participate in WebCenter collaborative features
- Tagging
- Linking
- Search
- Discussion Forums



Oracle BI and WebCenter Integration

The screenshot displays the Oracle WebCenter Spaces user interface. At the top, the 'WebCenter Spaces' header is visible, along with user information 'Robin Fisher'. The main content area is titled 'OOOW 2008 WebCenter...' and contains several sections:

- Left Sidebar:** A 'Welcome to the Oracle Open World 2008 PM Group Space' message, followed by 'Here some useful links:' and a link to 'HO.Shuttle.Bus.Schedule'. Below this is a section titled 'Acme Sales' featuring a pie chart with the following data:

Region	Percentage
Americas	62.50%
Europe	31.25%
Asia	6.250%
- Center:** A calendar view for the month of November, showing dates from Sunday to Wednesday.
- Right Sidebar:** A 'Catalog' section with a search bar and a list of items. Two items are highlighted with a red circle: 'Acme Sales Report' and 'Regional Sales Dashboard', each with an 'Add' button.

Agenda

- Oracle Business Intelligence
- Oracle Business Intelligence and ADF Integration
 - Fusion BI View Component
 - Programmatic VO against BI Server
- Oracle BI Composer
- WebCenter Spaces Integration (Collaborative Analytics)
- Demo

Thank you and enjoy the rest of the sessions

For more information on Oracle BI please visit

<http://www.oracle.com/us/solutions/business-analytics/business-intelligence/index.html>

Please join us at the following social media channels



<https://twitter.com/#!/OracleAnalytics>



<https://www.facebook.com/OracleEPMBl>



<http://www.oracle.com/us/solutions/business-analytics/business-intelligence/index.html>



<http://www.youtube.com/EvolvingBI>

