

# ***VueLink for SAP cFolders***

***An Integration between AutoVue  
Client-Server Edition and  
SAP Collaboration Folders (cFolders)***

***System Administrator  
Manual***



---

# CONTENTS

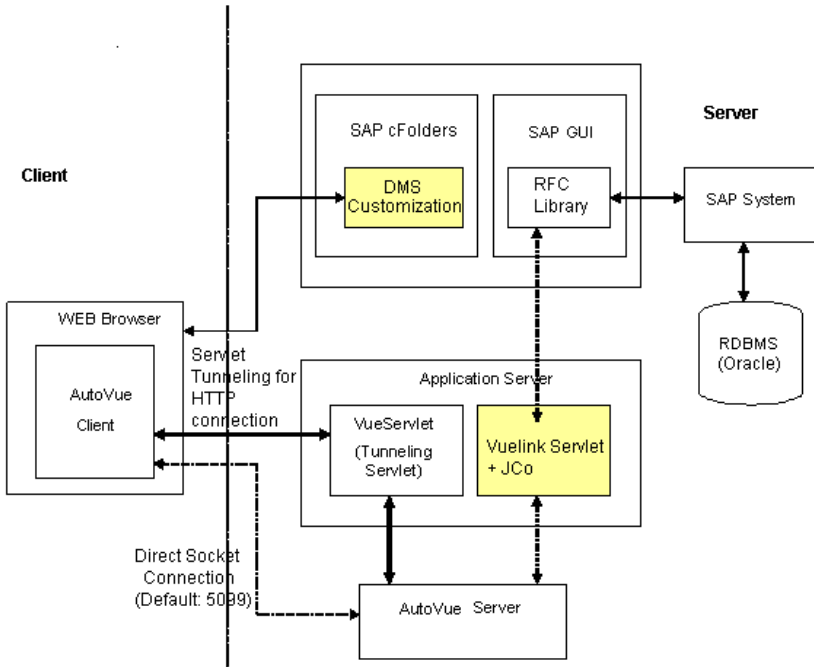
<b>INTRODUCTION</b>	<b>1</b>
How VueLink Works	1
<b>SYSTEM REQUIREMENTS</b>	<b>3</b>
<b>AUTOMATIC INSTALLATION</b>	<b>4</b>
To run InstallShield for VueLink for SAP cFolders	4
Installing VueLink Servlet for the Servlet Engine	17
To Install VueLink for Jetty	18
Generic Instructions to Deploy VueLink to a J2EE-enabled Application Server	18
Deploying VueLink to SAP J2EE Engine	19
<b>CONFIGURATION</b>	<b>26</b>
Setting Parameters inside vuelink.properties	26
To Configure Viewer URL for SAP cFolders	27
Activate Cimmetry Viewer	27
Specify the VueLink URL	27
To Configure web.xml for SAP J2EE Engine	28
To Configure vuelink.properties for SAP J2EE Engine	30
Enabling HTTPS/SSL	31
To Update java.security to Enable HTTPS/SSL	31
<b>VERIFICATION</b>	<b>33</b>
To Verify that VueLink Servlet is Running Properly	33
To Verify the Version of SAP JCo	34
<b>FEEDBACK</b>	<b>37</b>
General inquiries	37
Sales inquiries	37
Customer support	37



# Introduction

The VueLink servlet allows the AutoVue server to communicate with SAP cFolders System using the standard HTTP protocol. The block below illustrates a typical configuration of how AutoVue integrates with SAP cFolders System.

**Note** VueLink components are shaded.



## How VueLink Works

The client logs on to the Document Management System (DMS) through a Web browser such as Microsoft Internet Explorer or Netscape Navigator. With the Customization in place, clicking on a file launches AutoVue. When you click this link, the AutoVue client is launched and you can view that file inside the web browser window.

Depending on the AutoVue configuration, AutoVue client communicates with AutoVue Server either through servlet tunneling for HTTP connection or through direct socket connection. Then AutoVue Server communicates with the VueLink servlet using standard HTTP connection. With DMS Extension installed on the server, the VueLink servlet can communicate with SAP to handle any request made by AutoVue Server, like file 'fetching.'

To display a composite file (a file with external references), the VueLink servlet retrieves the file along with all its component files from DMS and makes them available to AutoVue Server. AutoVue server then processes them and AutoVue Client displays the composite file. From here you can annotate the file, create new Markups, save Markups into DMS and open Markups from DMS.

---

# System Requirements

- AutoVue Client-Server Edition v19 with Sp2
- SAP Java connector 2.0.9, 2.1.0, 2.1.1, 2.1.2, 2.1.3 or 2.1.4 for SAP R/3 v4.7
- SAP Java connector 2.1.6 for SAP Web AS 6.4
- SAP Server Installation
  - SAP R/3 Enterprise v4.7
  - or*
  - SAP Web AS 6.4
  - cFolders 3.1 with SP8
- One of the following Application Servers/Servlet Engines with Sun's Java Runtime Environment (JRE) v1.3.1 or higher
  - SAP J2EE Engine
  - Jetty (internal Servlet engine provided with AutoVue)
  - J2EE-compatible Application Server

**Example:** WebLogic, Tomcat

**Note** Please refer to the Release Notes for most up-to-date System Requirements.

# Automatic Installation

This document's installation instructions for installing VueLink servlet support these SAP server installations:

- SAP 4.7 with cFolders 3.1
- SAP WAS 6.4 with cFolders 3.1

Before installing the VueLink for SAP cFolders, ensure SAP cFolders and AutoVue are installed and configured according to manufacturer's instructions. Verify that they are operating correctly. Try testing SAP cFolders and AutoVue independently to verify that the installation was successful and that all functions are available and produce the expected results.

Below you will find instructions for installing VueLink for SAP cFolders with the help of the InstallShield Wizard. Instructions for manual installation follow.

## To run InstallShield for VueLink for SAP cFolders

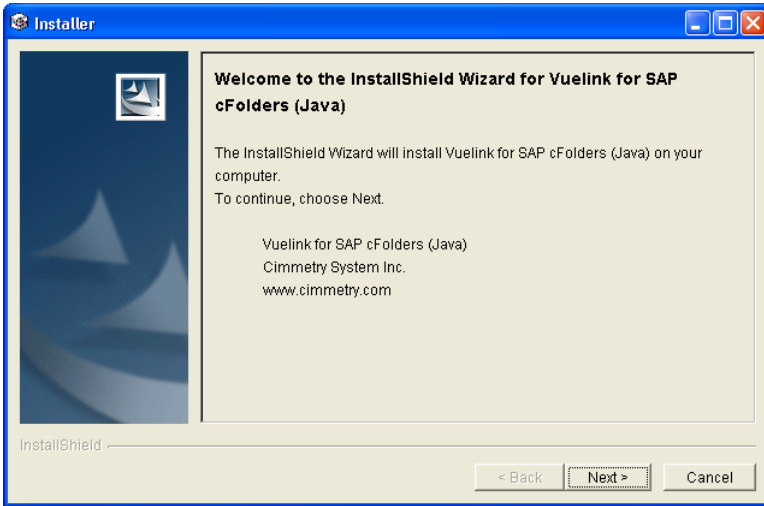
### Note

- If you have a previous copy of VueLink for SAP cFolders installed, **uninstall** it before proceeding with the new installation.
- If you are installing on Solaris, run **setupsolarisSparc.bin** found on the distribution CD under **/vuelink\_setup/solaris**.
- After the installation, you will need to activate the viewer and configure the URL to the viewer, refer to [Configuring Viewer URL for SAP cFolders 3.1](#).
- If you are running the VueLink on Solaris, set **LD\_LIBRARY\_PATH** to the folder containing SAP JCo libraries.
- Make sure the application server port specified during the installation is correct. If you change the host name or the port after the installation, you should modify **vuelink.properties** to indicate the correct values, see [Setting paramaters inside vuelink.properties](#).

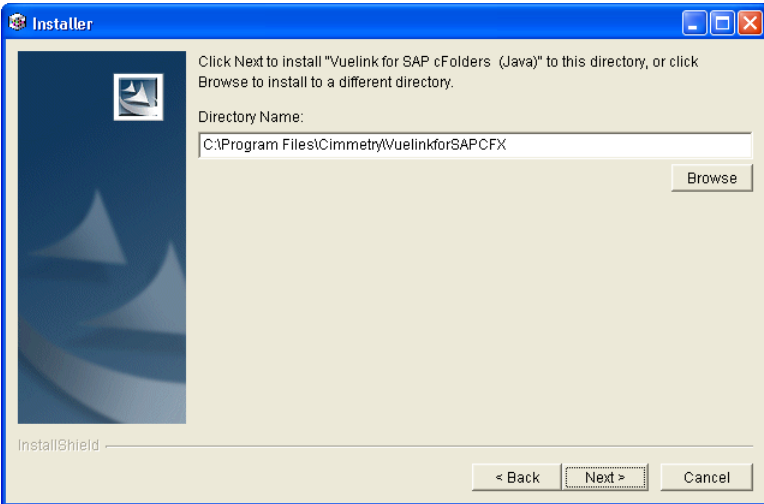
To install VueLink for SAP cFolders:

- 1 Run **setupwin32.exe** found on the distribution CD under **\AutoVue\_Client\_Server\_Edition\ vuelink\_setup\win32**. The installer starts installing VueLink for SAP cFolders.



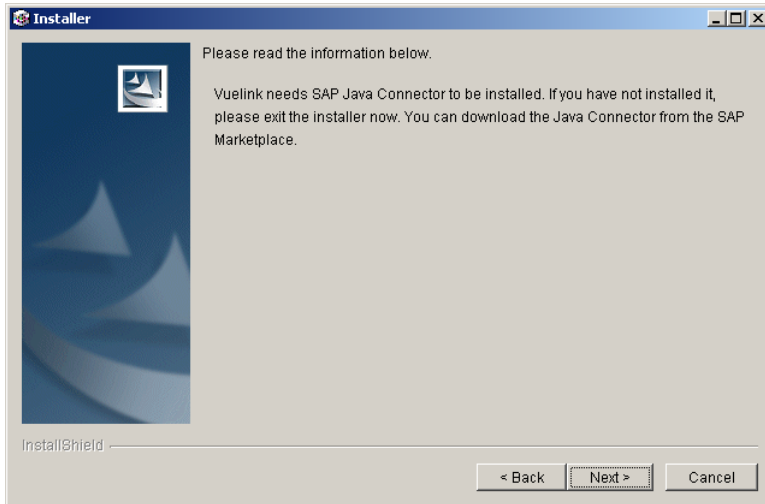


- 2 Specify the directory where you want VueLink for SAP cFolders installed. The setup copies necessary integration files into this directory.

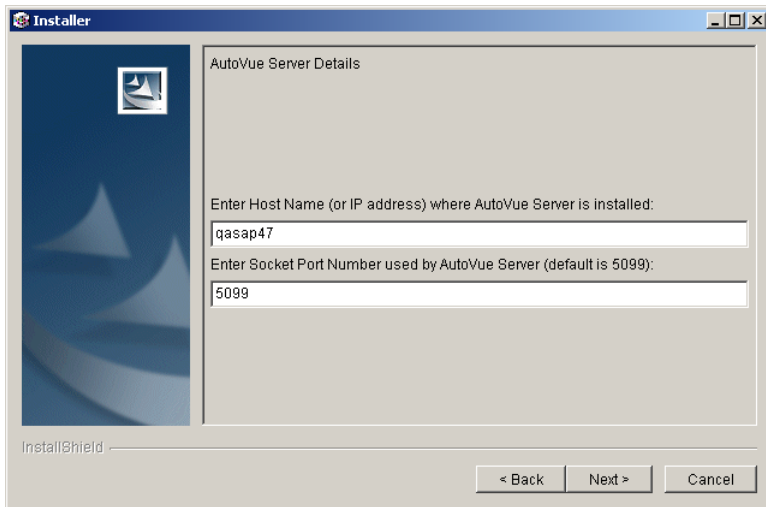


- 3 For VueLink for SAP cFolders to work, SAP Java Connector needs to be installed. If you have not installed it, exit the installer and install the Java Connector. You can download the Java Connector from the SAP

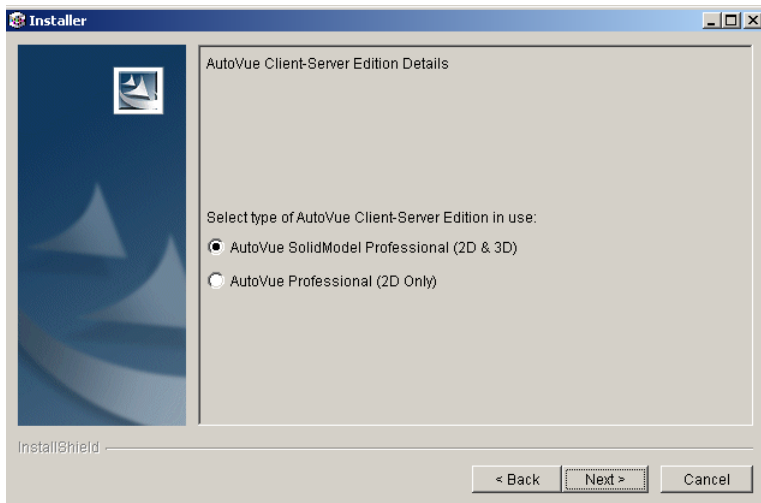
Marketplace. You should restart the installation after the Java Connector is installed.



- 4 Enter the details in the **AutoVue Server** screen that appears. Specify the AutoVue Server **Host Name** and the Socket **Port Number**.  
**Note** The default socket port for AutoVue Server is 5099.

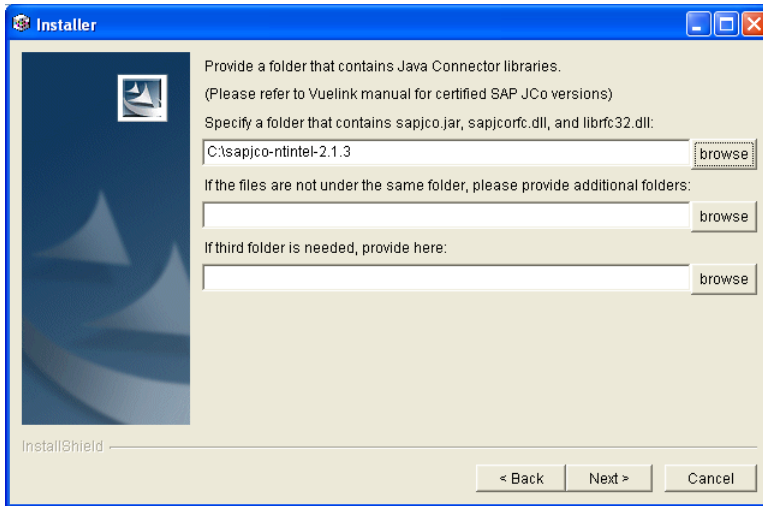


- 5 Select the type of AutoVue Server installation you are using: **AutoVue SolidModel Professional** or **AutoVue Professional**.



- Specify the folder containing Java Connector files.

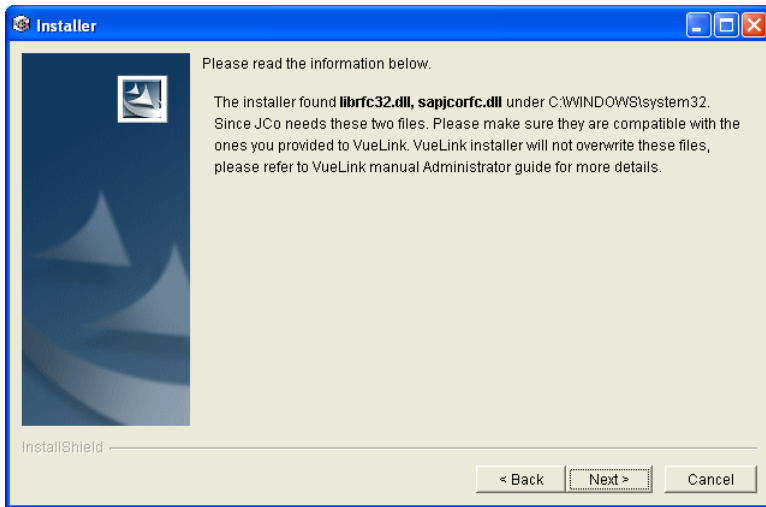
**Note** If the SAP Java Connector files are across multiple folders, specify all folders that contain these files.



The installer checks if Java Connector files are already under the system (c:\windows\system32) folder.

If Java Connector files are not found under the system folder, the installer will copy both files to that folder.

- If Java Connector files are found, the installer will prompt the user to check the compatibility of the Java Connector provided by the user and the files already installed.



To ensure that the Java Connector files in the systems folder are compatible with the ones provided to the VueLink, perform the following steps:

- a. Make a backup of the Java Connector files in the system folder.
- b. Keep the higher version of **librfc32.dll**.
- c. If the file **sapjcorfc.dll** is of a different version, you need to make sure to synchronize the Java Connector installation with VueLink and the application, since there can be only one **librfc32.dll** under the system folder.
- d. After updating any of these files, there are three cases that need to be tested:

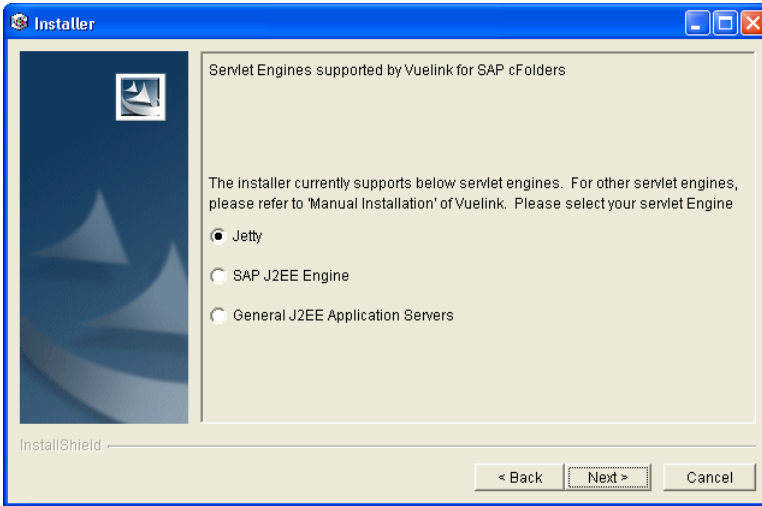
- Test the startup and exit of SAPGUI for Windows (if installed on the system).
- Test the startup and exit of SAP Management Console (if installed on the system).
- For VueLink, view a file where the Java Connector is actually invoked.

**Note** To verify the version of SAP JCo, refer to [Verifying the version of SAP JCo](#).

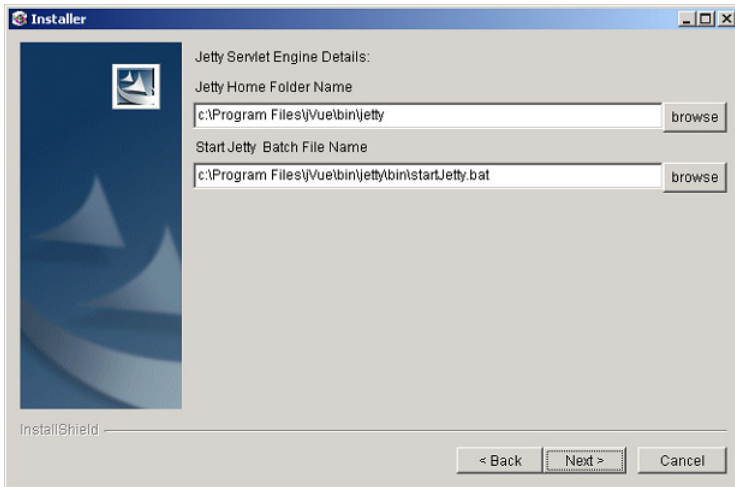
- 8 From the **Supported Servlet Engines** screen, select a servlet engine with which you wish to install the VueLink for SAP cFolders.

**Note** The installer currently supports Jetty, SAP J2EE Engine and J2EE Application Servers. Since many application servers are J2EE compatible,

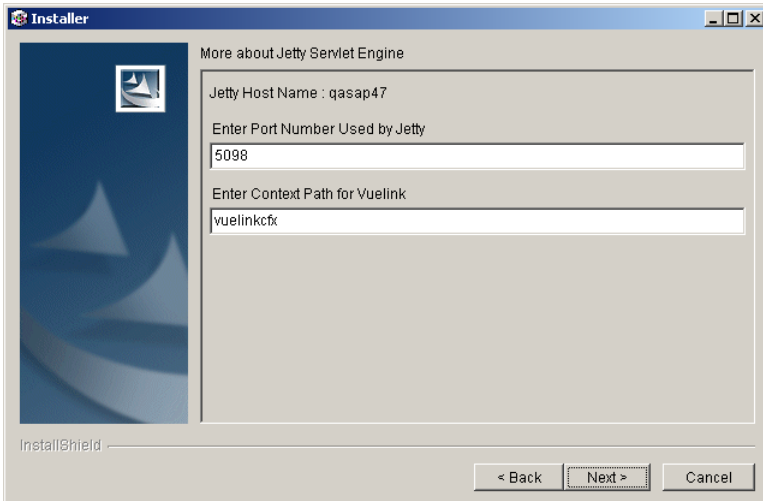
VueLink for SAP cFolders can be installed with most popular application servers.



- 9 If you selected **Jetty**, specify the details for Jetty Servlet Engine (Jetty Servlet engine is shipped with AutoVue Server):  
In the first text box, enter the folder name of the Jetty Installation.  
**Note** If you are using Jetty that is shipped with AutoVue, the default folder is `<Install_dir>\bin\jetty` (where `<Install_dir>` is the directory where AutoVue Server is installed).  
In the second text box, enter the path and name of the batch file to invoke Jetty.  
**Note** If you are using Jetty that is shipped with AutoVue, the default path and name are `<Install_dir>\bin\jetty\bin\startJetty.bat` (where `<Install_dir>` is the directory where AutoVue Server is installed).



- 10 Enter the **Port Number** used by Jetty and the **Context Path** for the VueLink. The Context path is the name with which the VueLink will be deployed.  
**Note** The default port for Jetty is 5098.

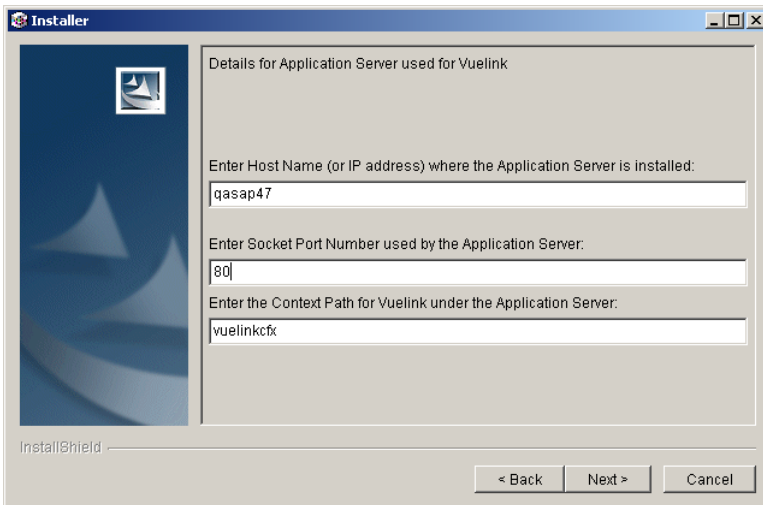


- 11 If you selected **General J2EE Application Servers**, the installer prompts for the Application server host name and the port.

Enter the **Application Server Host Name**, **Application Server Port Number** and the **Context** name for the VueLink.

The VueLink should be deployed with the same context name specified in this step.

The installer creates a **war** file that is to be deployed into your J2EE-enabled Application server. Refer to your J2EE Application Server documentation to finish the deployment for VueLink for SAP cFolders.



The **war** file is created in the folder **vueLink4j2ee** under the VueLink install directory, refer to [Generic instructions to deploy VueLink to a J2EE-enabled application server](#).

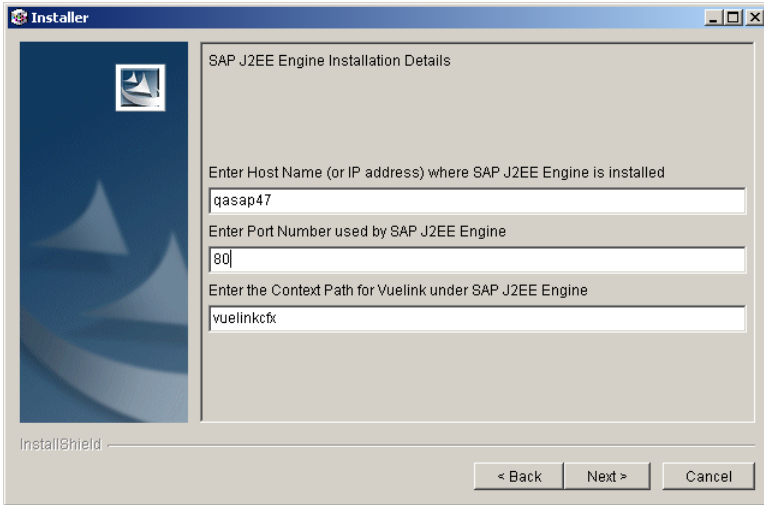
- 12 If you selected **SAP J2EE Engine**, you will be prompted with below details: Specify the **Host Name** of the SAP J2EE Engine installation.

Specify the **Port** used by the SAP J2EE Engine.

Specify the **Context** name for the VueLink.

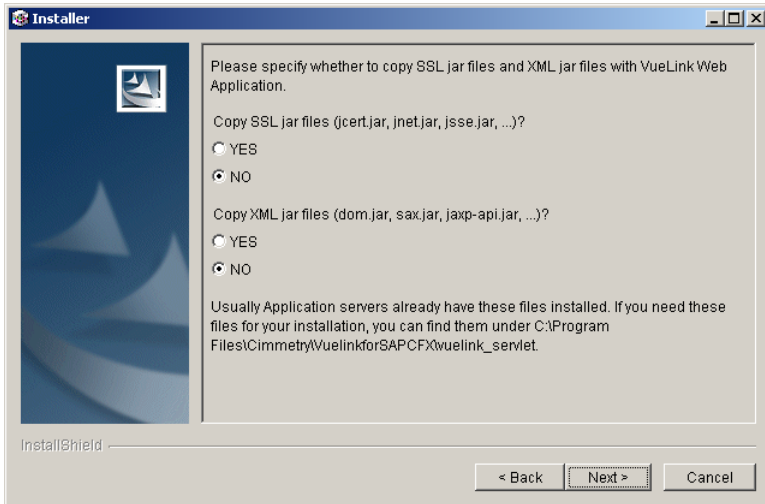
The VueLink should be deployed with the context name specified in this step, refer to [Deploying VueLink to SAP J2EE Engine](#).



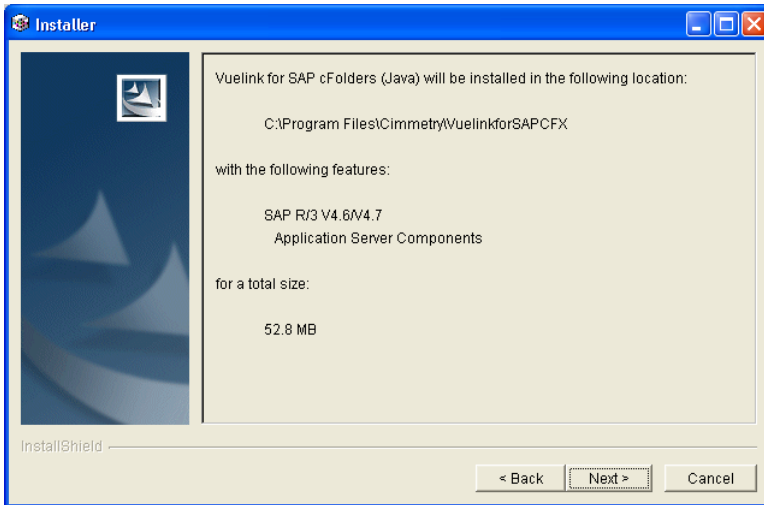


13 Specify whether to copy SSL jars files and XML jar files with VueLink web application.

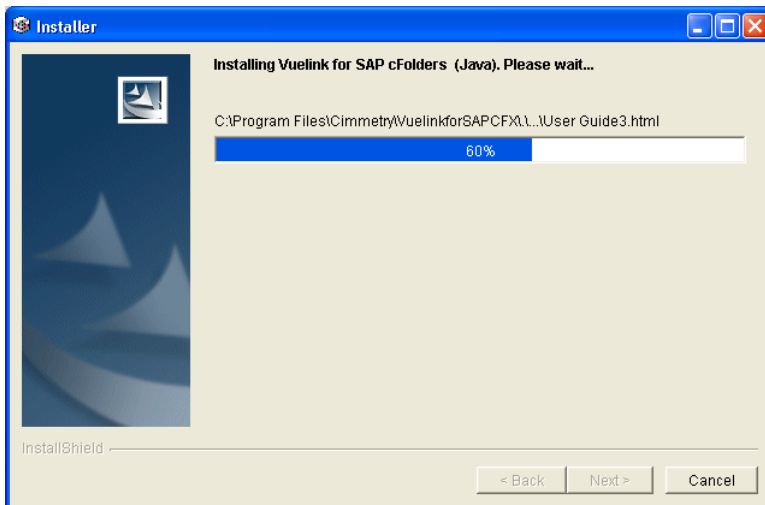
If your application server is using JRE 1.4 or higher, you do not need to copy this file. If you application server is using JRE 1.3 or lower, select **YES**.



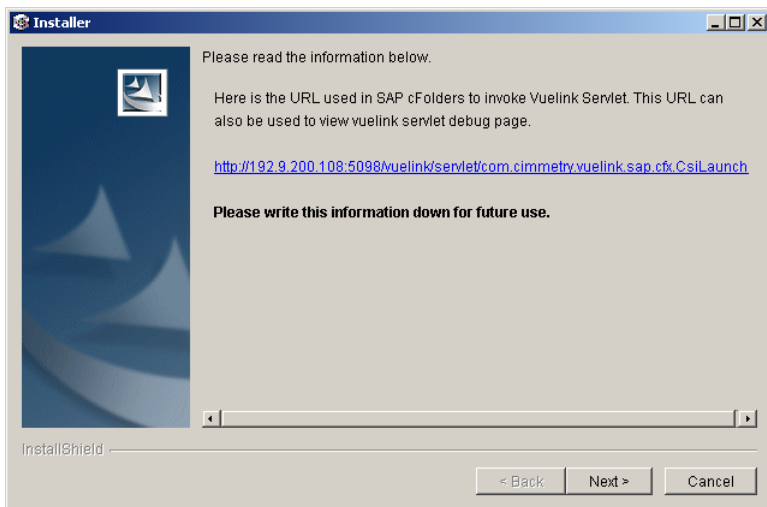
The installer summary screen appears.



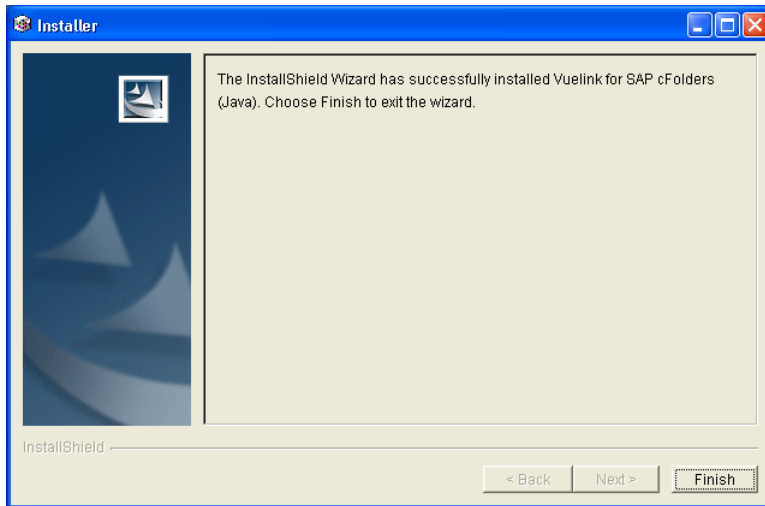
14 Click **Next** to begin the installation. Wait until the installer has completed creating and updating files.



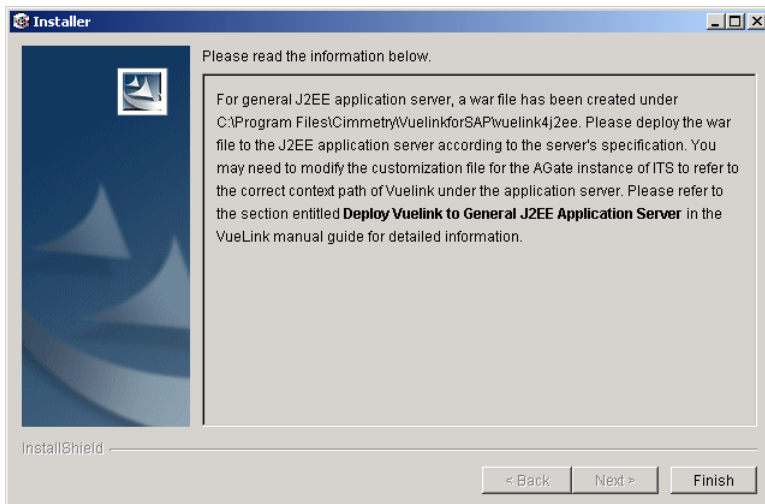
- 15 In the following screen, the URL to the VueLink servlet is displayed. You will need to note down this URL. You will need it later in the installation process



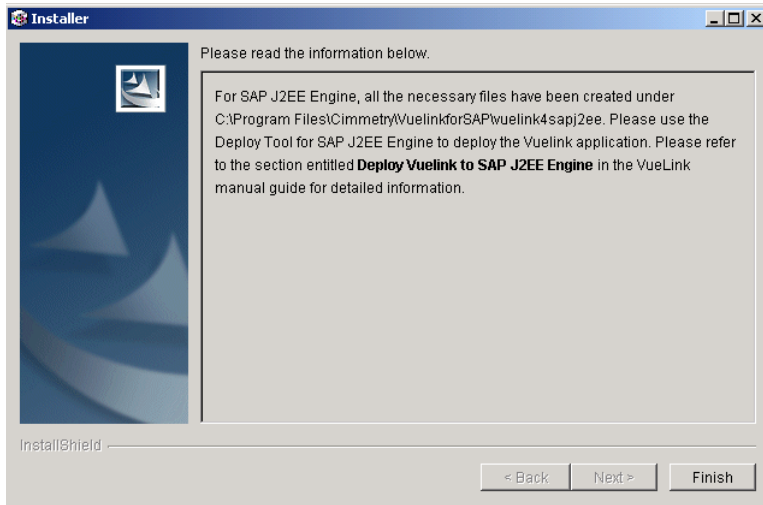
- 16 If this screen appears next, the installation was successful. Click **Next** to continue.



- 17 If you selected J2EE installation, the installer now reminds you that you need to deploy the war file with your Application Server. For instructions on how to deploy the VueLink, refer to [Generic Instructions to deploy VueLink to a J2EE application server](#)



- 18 If you selected SAP J2EE Engine as the servlet engine, the installer displays the reminder screen, refer to [Deploying VueLink to SAP J2EE Engine](#).



- 19 Click **Finish** to quit the installer.
- 20 Complete steps outlined in section [Configuring Viewer URL for SAP cFolders 3.1](#) to activate the Cimmety viewer and to configure the viewer URL.
- 21 For any additional configuration you want to perform for VueLink, refer to [Configuration](#).
- 22 Verify that the VueLink is working, refer to [Verification](#).

## Installing VueLink Servlet for the Servlet Engine

In this section we describe installing VueLink servlet to run with several popular servlet engines

- [Jetty](#)
- [General J2EE Application Server](#)
- [SAP J2EE Engine](#)

## To Install VueLink for Jetty

This section describes the steps necessary to install VueLink servlet to run with Jetty — AutoVue’s internal servlet engine. Jetty is installed as part of the AutoVue Server Installation. Its default location is **C:\Program Files\jVue\bin\jetty**; its default web port is 5098.

- 1 Run the installer for VueLink for SAP cFolders. In step 8, select Generic J2EE Application Server.
- 2 After the installation is complete, the VueLink creates a folder **vueLink4j2ee** in the VueLink installation directory. A **vueLink.war** file is created in this directory.
- 3 Copy **vueLink.war** to the webapps subdirectory in the Jetty installation.  
**Example:** C:\Program Files\jVue\bin\webapps.
- 4 Locate the Jetty configuration file, **jetty.xml**.  
**Example:** C:\Program Files\jVue\bin\webapps.  
Edit the file **jetty.xml**. Locate the following block and uncomment this block:

```
...
<! -- Remove this comment to activate this section
<Call name="addWebApplications">
  <Arg></Arg>
  <Arg><SystemProperty name="jetty.home" default="."/>/webapps</Arg>
  <Arg type="boolean">true</Arg>
</Call>
-->
...
```

- 5 Restart Jetty.  
Refer to [Setting parameters inside VueLink.properties](#) for information on setting VueLink properties.

## Generic Instructions to Deploy VueLink to a J2EE-enabled Application Server

This section describes the steps necessary to install VueLink servlet for a J2EE application server.

If 'General J2EE Application servers' was selected during the installation of the VueLink for SAP cFolders, the installer creates the file **vueLink.war** in **<VueLink Install Root>\vueLink4j2ee**.

The **vueLink.war** file should be deployed to any J2EE application server according to its deployment requirement. Please refer to the administration guide of your J2EE application server for details about how to deploy a war file.

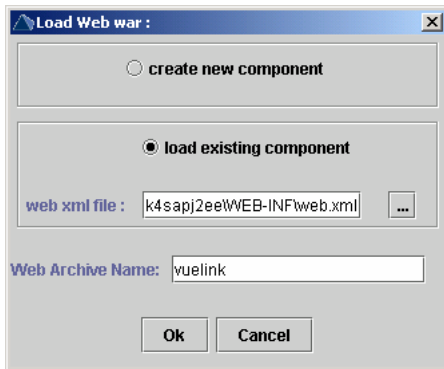
## Deploying VueLink to SAP J2EE Engine

This section describes the steps necessary to install VueLink servlet with the SAP J2EE Engine. If **SAP J2EE Engine** was selected during VueLink installation, a folder called **vueLink4sapj2ee** is created. Before deploying the VueLink with the SAP J2EE Engine, you may want to modify some settings. Please see the sections below:

- [Configuring web.xml for SAP J2EE Engine](#)
- [Configuring VueLink.properties for SAP J2EE Engine](#)

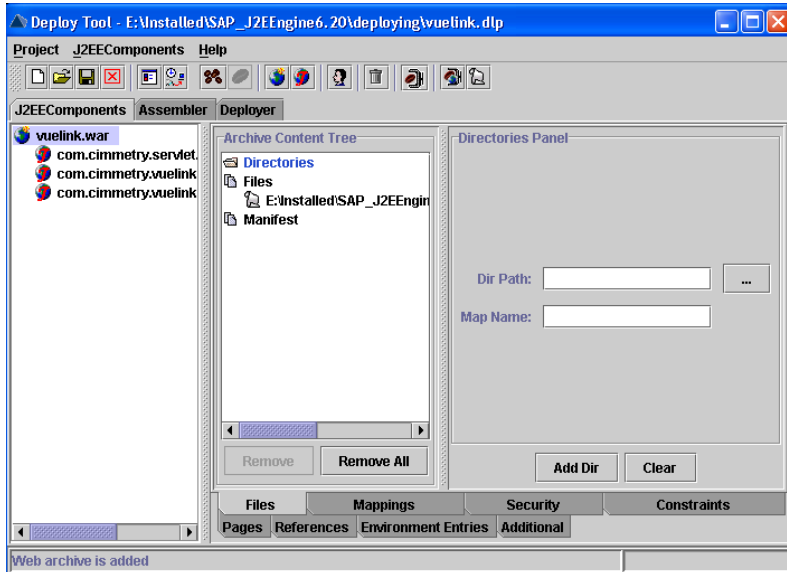
Once all modifications are complete, you must deploy VueLink with the SAP J2EE Engine. Follow the steps below to deploy VueLink with the SAP J2EE Engine:

- 1 Invoke **Deploy Tool** for SAP J2EE Engine.
- 2 To create a new project for the deployment, select **New Project** from the **Project** menu.  
The **New Project** dialog appears.
- 3 Specify a new name for the Project and click **OK**.  
The **Deploy Tool** panel is displayed.
- 4 Click the **J2EE Components** tab.
- 5 From the **J2EEComponents** menu, select **Add Web**.  
The **Load Web war** dialog appears.
- 6 Select **load existing component**.
- 7 Click the browse button (...) to browse to **<VueLink Install Folder>\vueLink4sapj2ee\WEB-INF**.
- 8 Select **web.xml** for the Web War file and click **OK**.
- 9 For the **Web Archive Name**, enter **vueLink** and click **OK**



This war component is displayed on the **J2EE Components** tab.

- 10 Select **vuelink.war** in the **J2EE Components** tab.  
The **Archive Content tree** panel appears.



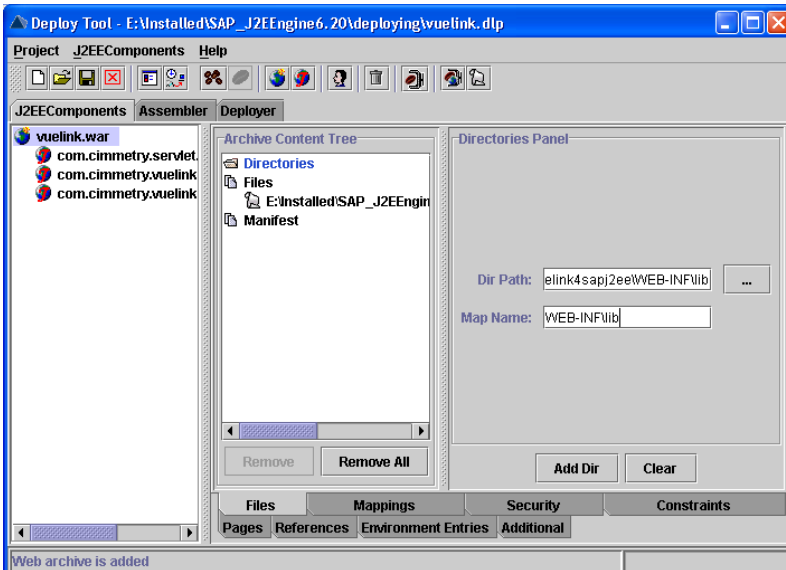


**11 Select Directories.**

The right panel is updated with **Directories Panel**.

To add a directory to the **web war**, click the browse button (...) to invoke the **Open** dialog to browse to the folder where VueLink class files are located. Add the folder <Vuelink Install Folder>\vuelink4sapj2ee\WEB-INF\lib to VueLink.

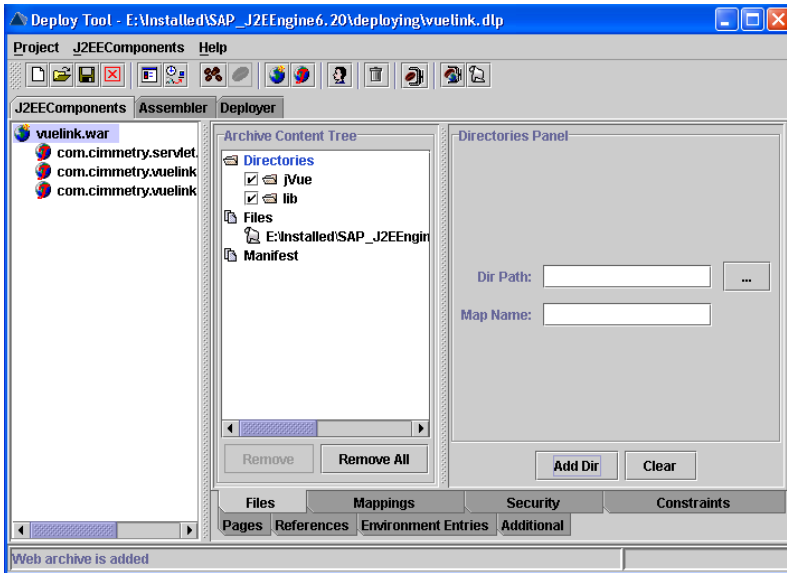
In the **Map Name** field, add **WEB-INF\lib**.

**12 Click Add Dir to confirm the selection.**

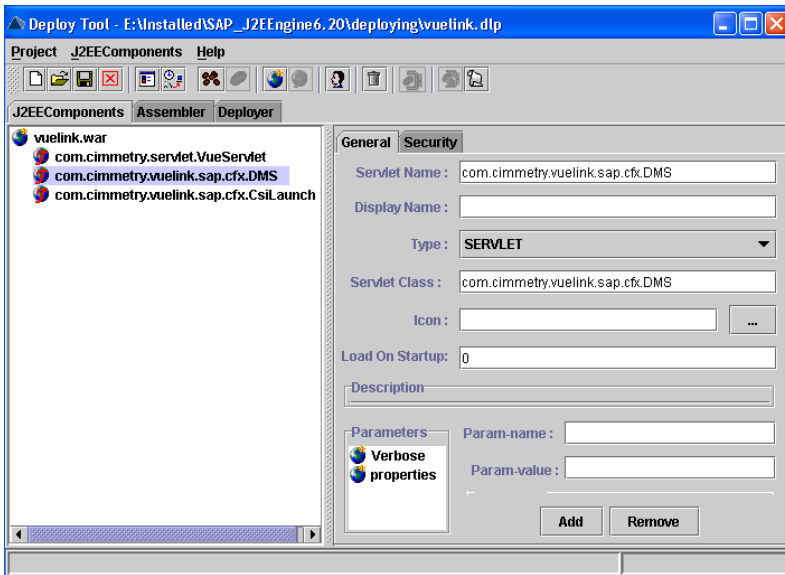
The folder **lib** is displayed in the **Archive Content Tree**.

**13 Repeat steps 11 and 12 to add the folder <Vuelink Install Folder>\vuelink4sapj2ee\jVue to VueLink, with the jVue mapping name.**

**Note** The mapping name is case sensitive.



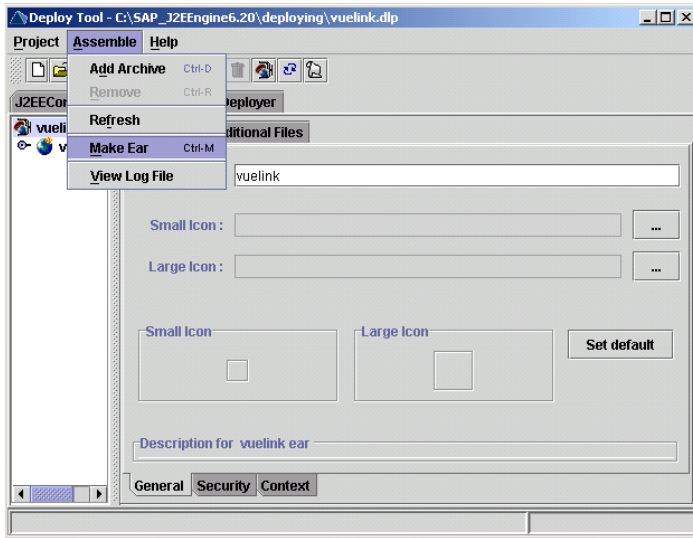
- 14 Save the project.
- 15 In the left panel, three servlets are listed. Select **com.cimmetry.vuelink.sap.cfx.DMS**.  
The information for this servlet is shown in the panel on the right.



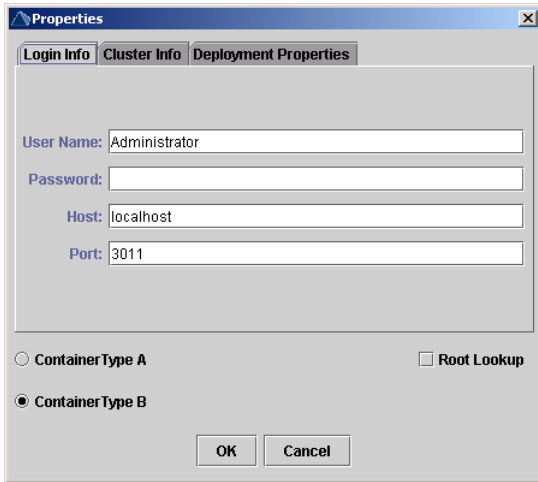
If you need to set or modify the VueLink properties:

In the bottom left corner of the right panel, a Parameters panel is displayed. The pre-defined parameters for the VueLink servlet (in this case, **Verbose** and **properties**) are listed. When you select one of them, the name and value will be shown in the right panel. Modify the values for these properties if required.

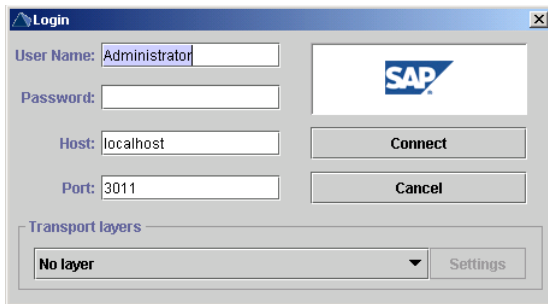
- 16 Select **vueLink.war** in the **J2EE Components** tab. Accept any warnings if they appear by clicking **OK**. From the **J2EEComponents** menu, select **Make Archive**.  
The result of archive creation is displayed in the status bar.
- 17 Once the Archive is created successfully, click the **Assembler** tab and select **Make Ear** from the **Assemble** menu.  
**Note** You will have to select **vueLink.war** in the J2EE Components tab to access the Assemble menu.
- 18 In the dialog that appears, specify the name for the EAR file and click **OK**.  
**Example:** vueLink



- 19 Check the message in the **Deploy Tool** status bar to make sure the EAR was built successfully.
- 20 The next step is to establish a connection between the Deployment Tool and SAP J2EE Engine. To do this, you need to correctly specify the cluster properties:  
Click the **Deployer** tab and select **Properties**, then **Login Info** from the **Deploy** menu.
- 21 Specify the **User Name**, **Password**, **Host** and **Port**.



- 22 Before starting the deployment, make sure the SAP J2EE Engine (cluster or stand-alone version) is started.
- 23 To connect, click the **Deployer** tab.
- 24 From the **Deploy** menu, select **Connect**.  
The **Login** dialog appears. All property fields must be filled in correctly to establish a connection.



- 25 From the **Deploy** menu, select **Deployment** and then **Deploy Ear**.  
The progress bar displays the rate of the procedure execution.  
**Note** If deployment fails, an error message appears.

# Configuration

- [Setting parameters inside vuelink.properties](#)
- [Configuring Viewer URL for SAP cFolders 3.1](#)
- [Configuring web.xml for SAP J2EE Engine](#)
- [Enabling HTTPS/SSL](#)

## Setting Parameters inside vuelink.properties

**vuelink.properties** is part of the vuelink war file that is deployed with your application server. If you need to modify it, you should extract the contents of the war file. When you are finished making the changes, you should recreate the war file and then re-deploy it. You can use JDK's jar utility to create the war file.

- 1 Extract the contents of the vuelink war file into a temporary directory.
- 2 Locate **vuelink.properties**, this file will be in the subfolder **WEB-INF/lib**.
- 3 Open the configuration file **vuelink.properties**.
- 4 Modify any of the required settings:

Setting	Syntax	Description
Language	Language=EN	By default it is set to EN for English. Refer to SAP documentation to get all the language settings.
EnableSapTrace	EnableSapTrace=false	By default, this is set to false. When set to true, the call to JCO will generate trace information for debugging.
SapTraceFolder	SapTraceFolder=C:/temp/	When <b>EnableSapTrace</b> is set to true, VueLink generates an XML result file for calls such as downloading and Markup creation. Specify the folder where these Trace files should be saved. If this is not set, files will be stored in the system's temporary folder.

Setting	Syntax	Description
appServer	appServer=192.9.200.40:5098	The host name and port of the application server where the VueLink servlet is running. If required, specify the IP address instead of the host name.
jVueServer	jVueServer=192.9.200.40:5099	The host name and the port for the AutoVue Server. If required, specify the IP address instead of the host name.

- 5 Recreate the war file.
- 6 Re-deploy the war file with your application server.

**Note** If you are using SAP J2EE engine, you can just update **vueLink.properties** in the **<vueLink installation folder>/vueLink4sapj2ee** folder, then re-deploy the vueLink.

## To Configure Viewer URL for SAP cFolders

In order to view files from the SAP cFolders system with AutoVue, you will need to perform the steps below:

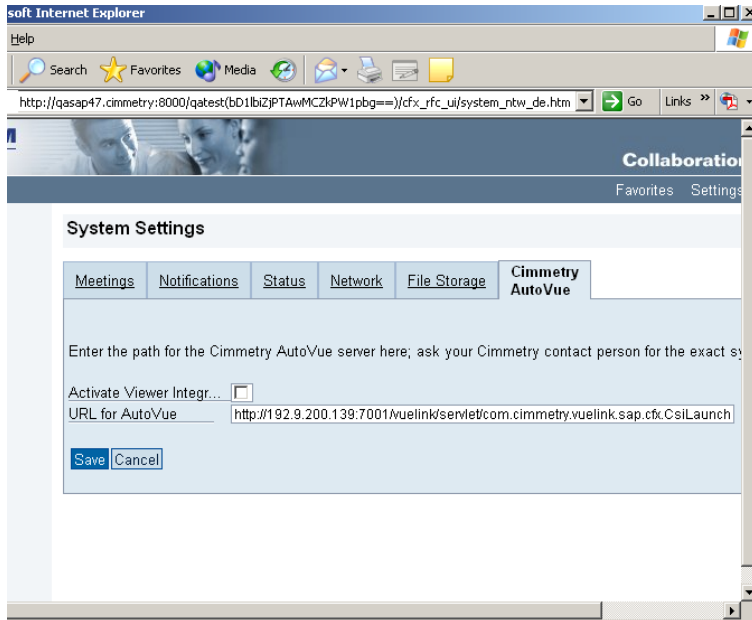
### Activate Cimmetry Viewer

- 1 Logon to the SAP cFolders system as a user that has administration rights.
- 2 Execute transaction **se80**.
- 3 From the class drop-down, select **CL\_CFX\_SYSTEM\_UI**.
- 4 Go to **class\_constructor** method.
- 5 Set **s\_use\_cimmetry** to true.  
**Example:** s\_use\_cimmetry=abap\_true.
- 6 Save changes.
- 7 Activate the changes.

### Specify the VueLink URL

- 1 Logon to the SAP cFolders System as a user with Administrative rights.

- 2 Select **Network Administration**.
- 3 Select the **Cimmetry AutoVue** tab.
- 4 Select the checkbox **Activate Viewer Integration**.
- 5 Specify the URL to the VueLink servlet in the field **URL for AutoVue**. The URL specified here should be the same as listed by the VueLink Installer at the end of the installation.



## To Configure web.xml for SAP J2EE Engine

If you selected SAP J2EE Engine as the servlet engine when you ran the installer, the folder **vueLink4sapj2ee** is created under the installation root. The installation root is referred to as **<VueLink Root>** later in this document. All files necessary for the VueLink deployment are copied here.

- 1 Using a text editor such as Notepad, open the file **web.xml** located in **<VueLink Root>\vueLink4sapj2ee\WEB-INF**.
- 2 Locate the servlet definition for VueServlet:



```

<servlet>
  <servlet-name>com.cimmetry.servlet.VueServlet</servlet-name>
  <servlet-class>com.cimmetry.servlet.VueServlet</servlet-class>
  <init-param>
    <param-name>Verbose</param-name>
    <param-value>0</param-value>
  </init-param>
  <init-param>
    <param-name>JVueServer</param-name>
    <param-value><jVueServer_hostname>:5099</param-value>
  </init-param>
</servlet>

```

There are two parameters for VueServlet you can modify:

Verbose	To enable debug messages, set to 1.
JVueServer	The host and port number for the AutoVue Server installation.

3 Locate the servlet definition for VueLink. See the following block of text:

```

<servlet>
  <servlet-name>com.cimmetry.vuelink.sap.cfx.CsiLaunch</servlet-name>
  <servlet-class>com.cimmetry.vuelink.sap.cfx.CsiLaunch</servlet-class>
  <init-param>
    <param-name>Verbose</param-name>
    <param-value>0</param-value>
  </init-param>
  <init-param>
    <param-name>properties</param-name>
    <param-value>/WEB-INF/lib/vuelink.properties</param-value>
  </init-param>
</servlet>

```

There are two parameters for VueLink you can change to suit your system.

Verbose	Set to 1 to enable debug messages.
properties	Specify the path to vuelink.properties.

## To Configure vuelink.properties for SAP J2EE Engine

If you selected SAP J2EE Engine as the servlet engine when you ran the installer, the folder **vuelink4sapj2ee** is created under the installation root. The installation root will be referred to as **<Vuelink Root>** later in this document. All necessary files for the VueLink deployment are copied here.

- 1 Using a text editor such as Notepad, open the file **vuelink.properties** located in **<Vuelink Root>\vuelink4sapj2ee\WEB-INF\lib**.
- 2 Make the required changes to this file, refer to [Setting Parameters inside vuelink.properties](#).  
You can now deploy VueLink, refer to [Deploy VueLink to SAP J2EE Engine](#).

# Enabling HTTPS/SSL

## To Update java.security to Enable HTTPS/SSL

VueLink for SAP cFolders supports connections to HTTPS (Secure HyperText Transfer Protocol) using SSL (Secure Socket Layer).

- 1 Using a text editor such as Notepad, open the file **java.security** located in **<JRE Home>\jre\lib\security**, where **<JRE Home>** is the root folder where Sun's Java Runtime Environment (JRE) is installed.
- 2 Look for the line **security.provider.2** under the section **# List of Providers** and immediately below it add the following lines shown in **bold**:

```
#  
# List of providers and their preference orders (see above):  
#  
security.provider.1=sun.security.provider.Sun  
security.provider.2=com.sun.rsa.jca.Provider  
security.provider.3=com.sun.net.ssl.internal.ssl.Provider
```

If you already have an entry with **security.provider.3**, replace 3 with next available number.

- 3 Restart your Application Server/Servlet Engine for changes to take effect.  
**Note** If you have obtained a Trial SSL ID from VeriSign (CA), then you need to install **Test CA Root** into the **JRE** used by your Application Server/Servlet Engine. This is a special step that VeriSign has implemented to prevent fraudulent use of Test Server IDs. When you purchase a regular Secure Server ID, you will NOT have to go through this step.  
For example, if you have obtained Trial SSL ID for Microsoft IIS Web server, then do the following:
  - a. Import the SSL ID you obtained from CA into Microsoft Internet Explorer (IE) and export it in Base-64 encoded format X.509.
  - b. From **Tools**, select **Internet Options**.
  - c. Click the **Content** tab.

- d. Click **Certificates** and then click **Import**.
- e. Follow the on-screen instructions.
- f. Import the Base-64 SSL ID to the cacerts file using **keytool.exe** (the default password is **changeit**).

```
C:\jdk1.3.1\bin>keytool -import -alias hostname -file c:\ssl3.cer -
trustcacerts -v -keystore
C:\jdk1.3.1\jre\lib\security\cacerts
```

password: changeit

```
Serial number: 257bc618dbdcbf7befc81c2fce739a8a
Valid from: Wed Apr 10 20:00:00 EDT 2002 until: Thu Apr 25 19:59:59
EDT 2002
Certificate fingerprints:
MD5: E5:0B:A7:36:B7:B9:76:71:72:D8:D7:7A:EB:57:5D:13:SHA1:
E9:CE:9C:35:7F:28:68:7D:6D:1C:0B:4D:18:26:87:63:0C:54:05:98
Trust this certificate? [no]: yes
Certificate was added to keystore
[Saving C:\jdk1.3.1\jre\lib\security\cacerts]
```

**Important:** You need to repeat step to import the SSL ID into cacerts file for JRE used by AutoVue server. The location for cacerts file is **<Install\_dir>\jre\1.3\lib\security\cacerts** where **<Install\_dir>** is the directory where AutoVue server is installed.

```
C:\Program Files\jVue\jre\1.3\bin>keytool -import -alias hostname -file
c:\ssl3.cer -trustcacerts -v -keystore C:\Program Files\jVue\jre\1.3\lib\
security\cacerts
```

- 4 Restart your Application Server/Servlet Engine and the AutoVue server for changes to take effect.
- 5 To verify that the **SSL id** was successfully imported into cacerts, use the keytool utility.
 

```
C:\jdk1.3.1\bin>keytool -list -keystore C:\jdk1.3.1\jre\lib\security\cacerts
```

**Note** If you are using SSL with the application server, make sure that the application server port that you specify in **vueLink.properties** is the correct SSL port.

# Verification

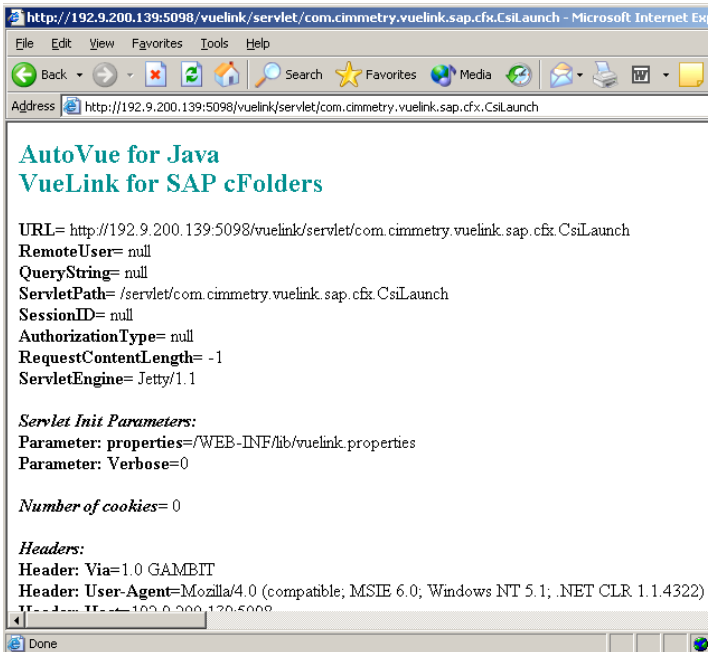
## To Verify that VueLink Servlet is Running Properly

To verify that the VueLink servlet (com.cimmetry.vuelink.sap.cfx.CsiLaunch) is working properly, launch your Web browser and enter the URL pointing to the Servlet alias name, which you assigned when installing **vuelink.jar** into the application server, refer to [Installing VueLink Servlet for the Servlet Engine](#).

**Example:** `http://qasap62:5098/vuelink/servlet/com.cimmetry.vuelink.sap.cfx.CsiLaunch`

Below is a screen representing a sample response indicating that VueLink is running properly. If you do not receive a similar response, refer to the installation instructions.

**Note** **Build number** and **Build Date** are also shown in the response.



At the bottom of the above screen, all the initial parameters for VueLink for SAP cFolders are listed. You can check from here if the parameters were set properly.

```

http://192.9.200.139:5098/vuelink/servlet/com.cimmetry.vuelink.sap.cfx.CsilLaunch
File Edit View Favorites Tools Help
Back Forward Stop Home Search Favorites Media
Address http://192.9.200.139:5098/vuelink/servlet/com.cimmetry.vuelink.sap.cfx.CsilLaunch
java.specification.vendor=Sun Microsystems Inc.
user.language=en
java.vm.info=mixed mode
java.version=1.3.1_02
java.ext.dirs=/export/spare/users/qa/jVue17_1/jre/lib/ext
sun.boot.class.path=/export/spare/users/qa/jVue17_1/jre/lib/rt.jar:/export/sj
java.vendor=Sun Microsystems Inc.
file.separator=/
java.vendor.url.bug=http://java.sun.com/cgi-bin/bugreport.cgi
sun.cpu.endian=big
sun.io.unicode.encoding=UTF-8
sun.cpu.isalist=sparcv9+vis sparcv9 sparcv8plus+vis sparcv8plus sparcv8

Initial Properties:
Language=EN
jVueServer=192.9.200.139:5099
SapSystemNumber=00
EnableSapTrace=false
SapHostName=192.9.250.250
SapTraceFolder=c:/temp/
appServer=192.9.200.139:5098
Verbose=false
Done

```

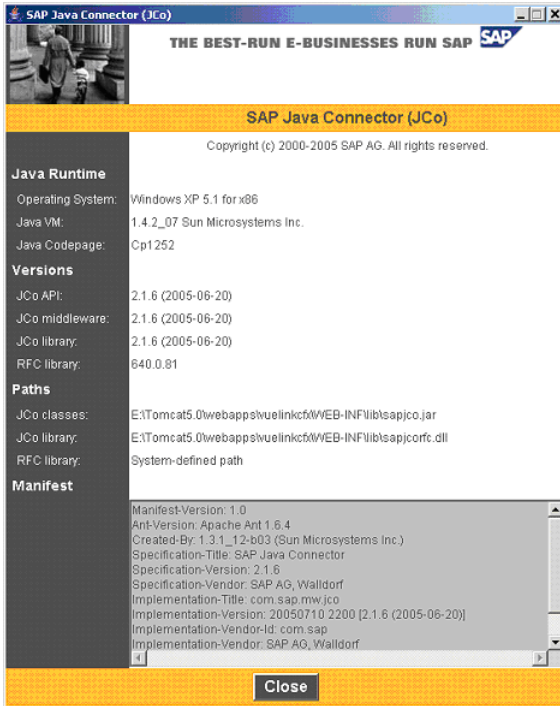
## To Verify the Version of SAP JCo

To verify the SAP JCo installation, you must run the following command in a console window:

```
java -jar ./sapjco.jar
```

**Example:** If you have installed VueLink to Tomcat under **E:\Tomcat\webapps\vueLinkkicfx**, you go to folder **E:\Tomcat\webapps\vueLinkkicfx\WEB-INF\lib** and run the above command.

If the screen below appears and no error or exception appears in the console window, then JCo installed with VueLink was configured properly.







# Feedback

Cimmetry Systems products are designed according to your needs. We would appreciate you feedback, comments or suggestions. Contact us by fax, e-mail or telephone. We added a feedback button to our Web page that activates an easy-to-use feedback form. Let us know what you think!

## General inquiries

**Telephone:** +1 514 735-3219

**Fax:** +1 514 735-6440

**E-mail:** [info@cimmetry.com](mailto:info@cimmetry.com)

**Web Site:** <http://www.cimmetry.com>

## Sales inquiries

**Telephone:** +1 514 735-3219 or 1-800-361-1904

**Fax:** +1 514 735-6440

**E-mail:** [sales@cimmetry.com](mailto:sales@cimmetry.com)

## Customer support

**Telephone:** +1 514 735-9941

**Web Site:** <http://www.cimmetry.com/support>

