

VueLink for SharePoint

***An interface between
AutoVue Client-Server Edition and
Microsoft SharePoint Server***

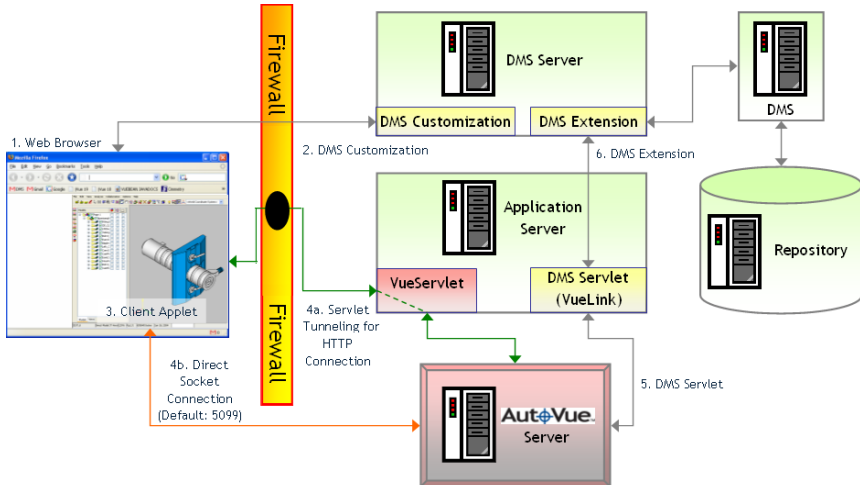
System Administrator Manual

Contents

INTRODUCTION	1
SYSTEM REQUIREMENTS	2
INSTALLATION	3
Installation Prerequisites	3
Automated Installation	3
Manual installation	15
SharePoint Customization	15
SharePoint Extension	17
VueLink Servlet and Web Application	18
Configuration	18
Verification	18
CONFIGURATION	19
Setting DMS launch parameter in vue.aspx	19
Setting AutoVue Applet parameters in vuelink.properties	19
Enabling Markup and Metafile Functionality for New Sites	20
Enabling Viewing Files using Web Parts	21
VERIFICATION	24
Verifying that VueLink is running properly	24
Running VueLink in Debug Mode	25
FEEDBACK	27
General Inquiries	27
Sales Inquiries	27
Customer Support	27

Introduction

The VueLink Servlet allows AutoVue Client Server Edition to communicate with Windows SharePoint Services/SharePoint Portal Server (SharePoint) using the standard HTTP protocol. The following figure and steps show a typical configuration for integration between AutoVue and SharePoint.



- 1 You log on to the Microsoft SharePoint Server through a Web browser such as Microsoft Internet Explorer.
- 2 With the Customization in place, clicking on a file opens a menu that lets you select **View in AutoVue**.
- 3 Clicking this option launches the AutoVue applet and you can view the file inside the web browser window.
- 4 Depending on the AutoVue configuration, the AutoVue applet communicates with the AutoVue Server either through servlet tunneling for HTTP connection or through direct socket connection.
- 5 AutoVue Server then communicates with the VueLink servlet using standard HTTP connection.
- 6 With DMS Extension installed on the server, the VueLink servlet can communicate with SharePoint to handle any request made by AutoVue Server, like file 'fetching.'

System Requirements

Note: For the most up-to-date list of system requirements and for a list of known issues, see the release notes available in the **etc** subfolder of the VueLink distribution.

Server

- AutoVue Client Server Edition v19.1 (and any Service Packs for v19.1)
- Microsoft Office SharePoint Server 2007 or Windows SharePoint Services 2007
- J2EE Web Application Server/Servlet Engine (e.g. Jakarta Tomcat 5.5.20)

Installation

Installation Prerequisites

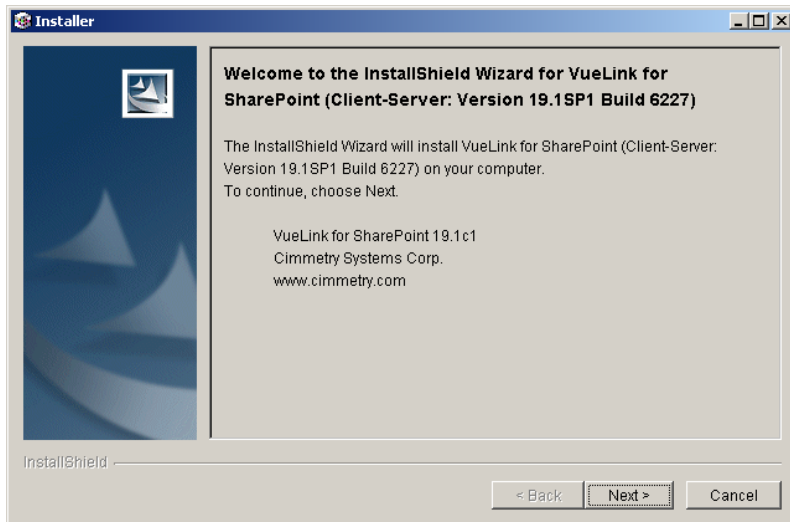
Before integrating AutoVue with SharePoint, ensure SharePoint, AutoVue Client Server and Application Server (e.g. Tomcat) are properly installed and configured on your system, according to the manufacturer's instructions, and are operating correctly. It is best to test either SharePoint or AutoVue independently to verify that the installation has been successful and that all functions are available and produce the expected results before integrating.

Automated Installation

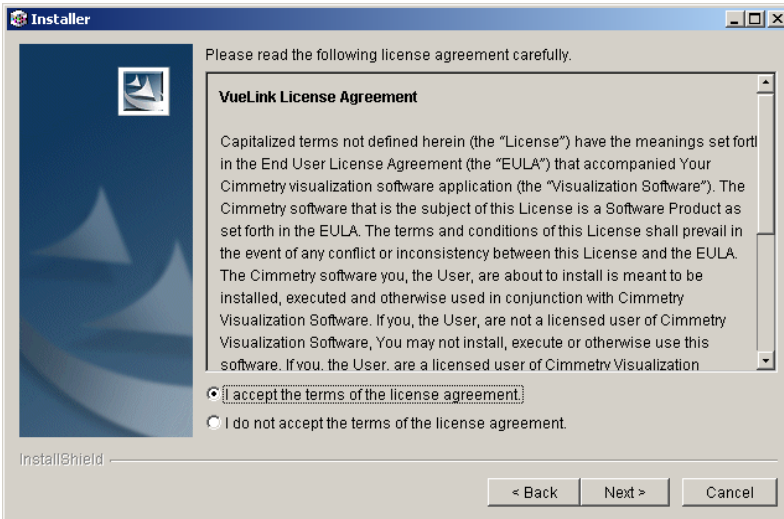
The VueLink Installer for SharePoint installs the VueLink Servlet, and customizes and configures SharePoint and AutoVue Client-Server.

Note If you have a previous copy of VueLink for SharePoint installed, uninstall it before proceeding with the new installation.

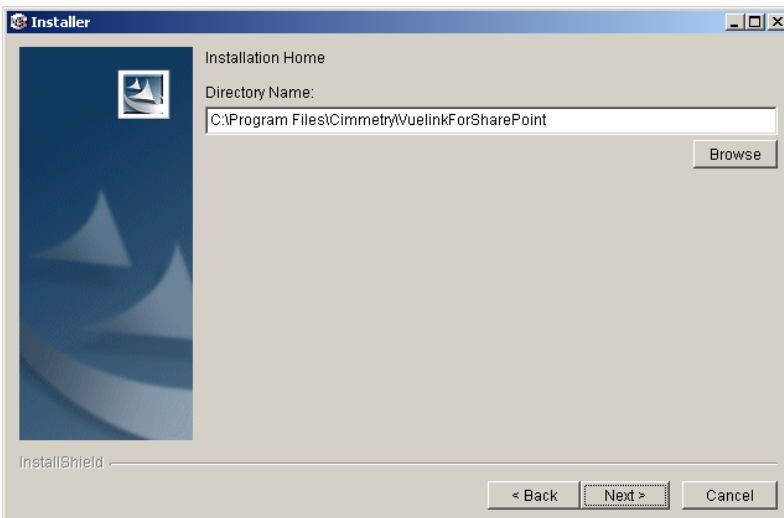
- 1 Run **setupwin32.exe** found on the Distribution CD in `/AutoVue_Client_Server_Edition/vuelink_setup/win32`. The installer starts installation of VueLink for SharePoint.



- 2 Read the VueLink License Agreement, selected the option to agree to the terms, and click **Next**.



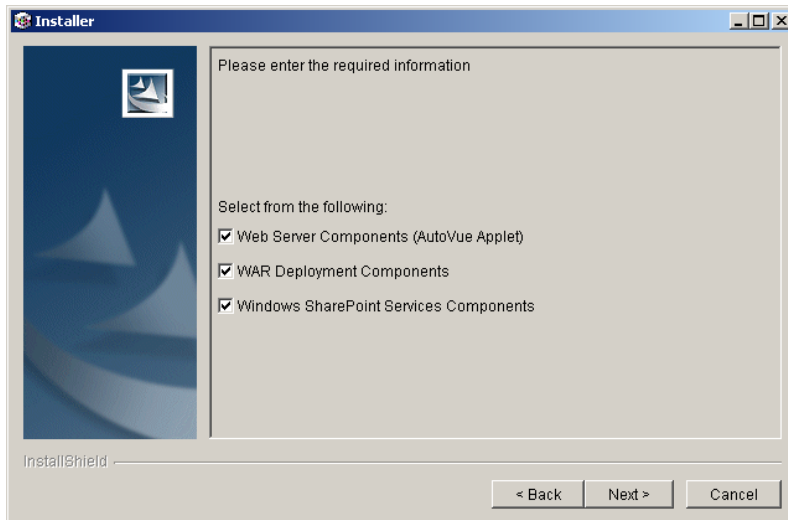
- 3 Enter the Installation home for VueLink for SharePoint. Setup creates a copy of all files installed or updated as part of the installation in this directory. These files can be referred to later in case the installation has to be updated.



- 4 Choose the components that need to be installed:

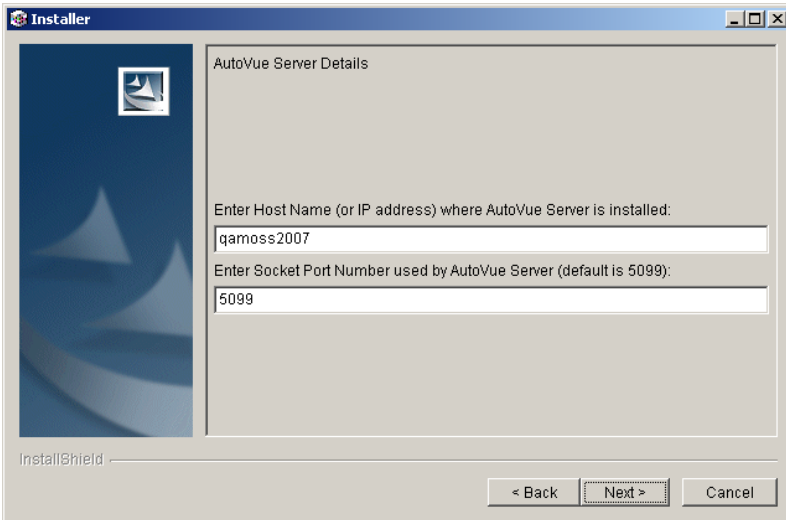
- **Web Server Components (AutoVue Applet)** are html/ gif and other web resources that belong to AutoVue Client Server and VueLink for SharePoint.
- **WAR Deployment Components** installs VueLink components and deploys VueLink components in the Application Server. Note that this component needs a Servlet Engine or Application Server that is compatible with J2EE specification. The vuelink.war also exists in VueLink for SharePoint home directory in the vuelink4j2ee folder after installation. It can be deployed manually later on.
- **SharePoint Components** installs Cimmetry web services and add customization to components inside SharePoint.

You may choose to install all three components. The following steps deal with one component at a time.

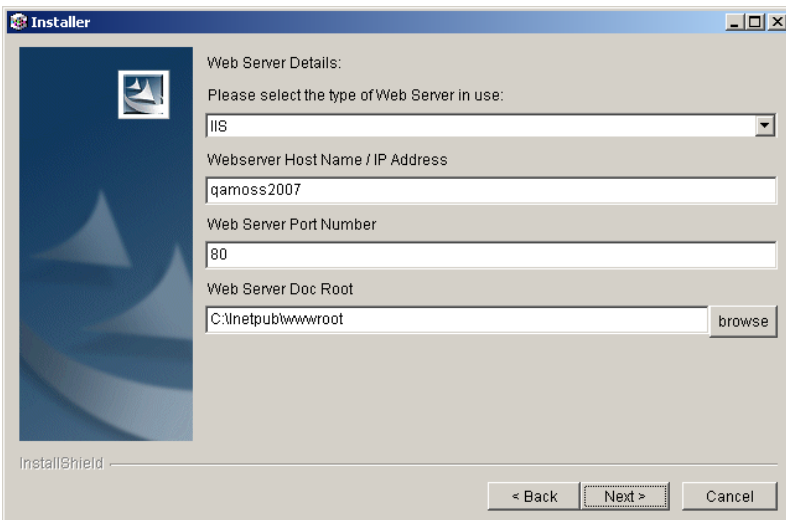


- 5 Since the server part of AutoVue Client-Server is needed for every component, the installer then prompts for the details of AutoVue Server.

Enter the hostname of the machine running the AutoVue Server and the socket port of AutoVue Server.



- 6 The installer prompts for Web Server Details. Select the web server in use and enter the Host Machine Name, the Port for the web server and the web server doc root.



- 7 Enter the hostname and socket port and the desired context name for VueLink for SharePoint and the path to deployment location of the Application server. Also specify if you want the installer to copy SSL-related .jar files. If you are using JVM 1.4 or higher, you do not need to copy these files.

Note The Installer installs Application Server Components in installation home directory and only deploys it under Application Server if the path to its deployment directory is given. If the Application server is capable of hot deployment then proceed after entering requested information. Otherwise, make sure that the Application Server is not running. If it is, stop the Application Server before proceeding.

Installer

Details for Application Server used for VueLink

Enter Host Name (or IP address) where the Application Server is installed:
qamoss2007

Enter Socket Port Number used by the Application Server:
8080

Enter the context to be used for VueLink J2EE deployment
vuelink

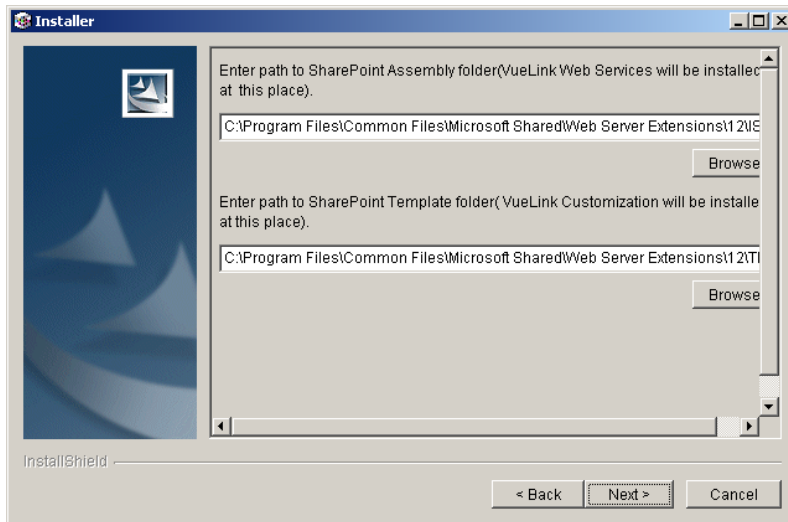
Enter the path to Web Application Server Deployment Directory (optional)
Browse

Copy SSL related packages

InstallShield

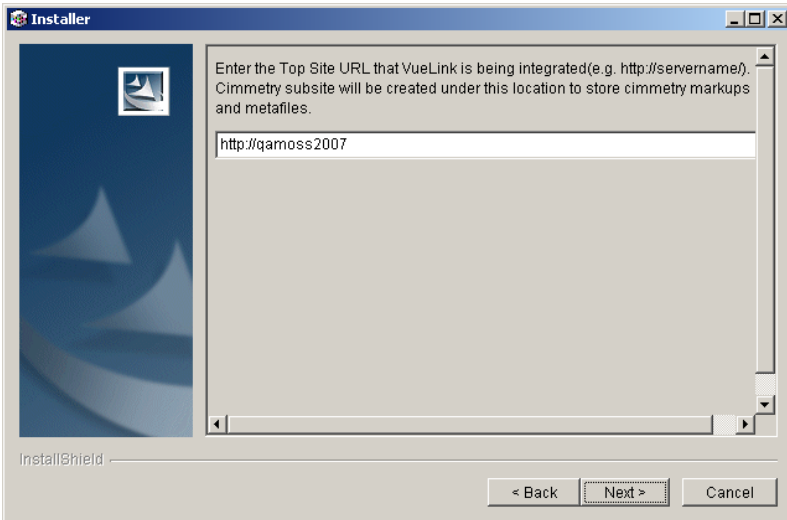
< Back Next > Cancel

- 8 If you choose to install SharePoint Components, the installer prompts for SharePoint Assembly and Template folders.

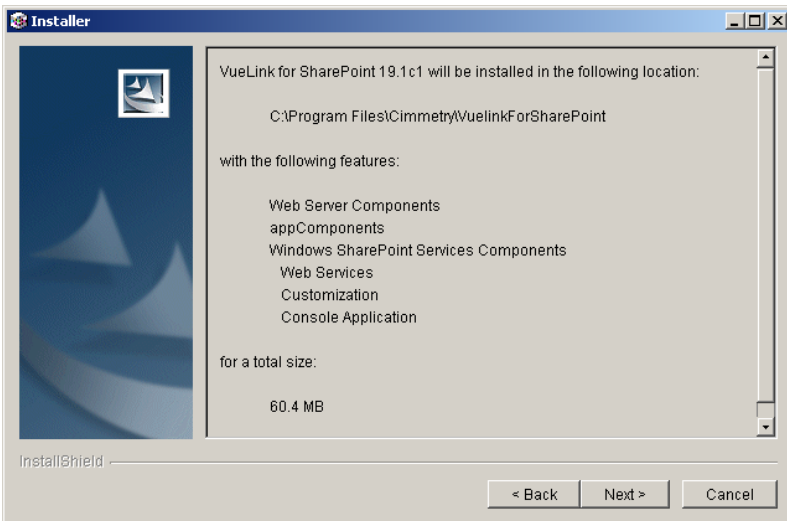


- 9 The installer prompts for the URL of Top Site with which VueLink is being integrated. The installer automatically creates a Cimmetry subsite for storing markups and metafiles at this location. You can also run this tool later on to create a Cimmetry sub site inside other top sites.

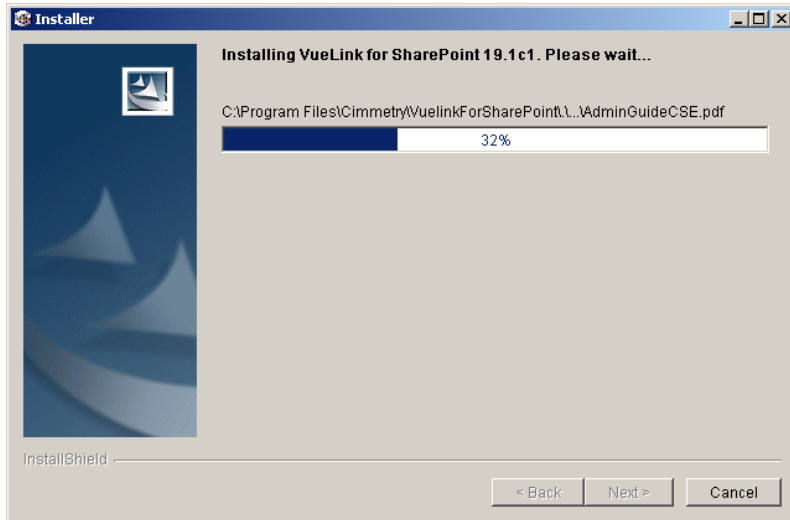
If you do not enter a URL, the Cimmetry tool is not invoked and a Cimmetry site is not created automatically.



10 The Installer summarizes the installation options, and a panel shows the information. The following figure shows an example:

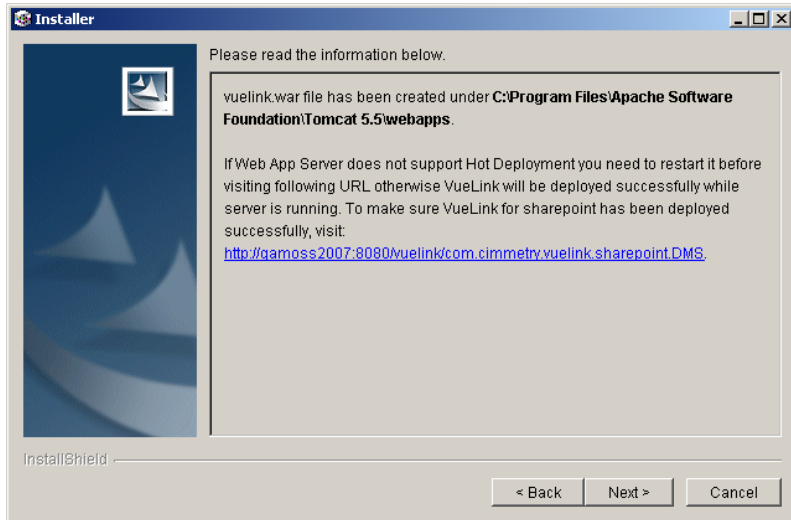


- 11 Click **Next** to Continue Installation. Wait till the installer completes creating and updating files.

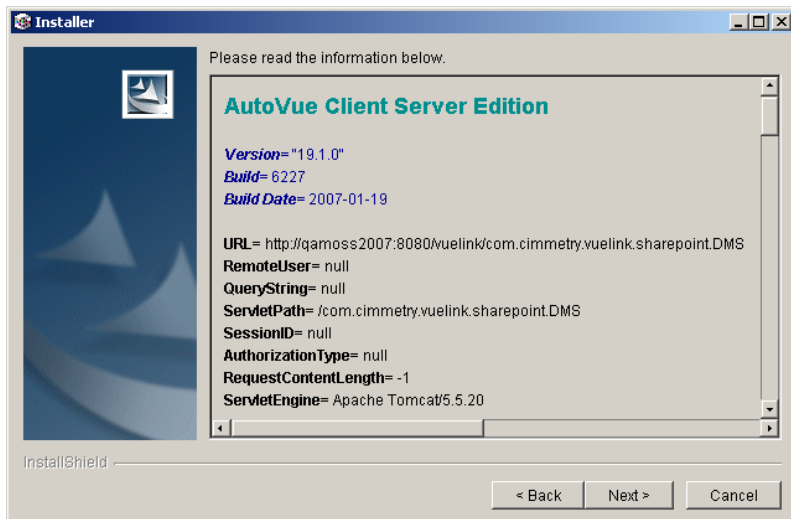


- 12 The installer creates a log of the installation, which is stored in the installation folder. To view the log file, find this log file and open it.

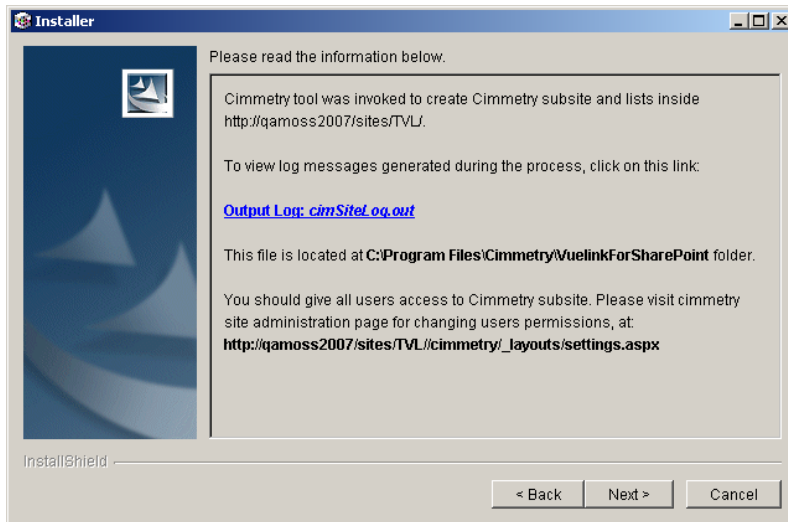
- 13 If you have chosen to install the WAR component and you have provided the installer with deployment directory, the installer deploys vueLink.war and displays the link to the VueLink servlet test page.



If you click the link shown in the previous figure, the VueLink Test page opens inside the installer window, if the application server is running. If it is not running, a message displays telling you that the installer cannot connect to the VueLink test page.

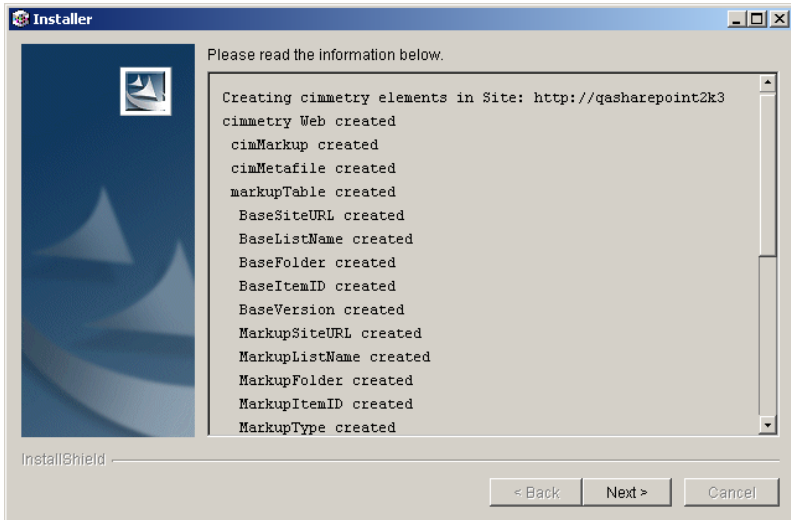


- 14 If you select Top Site URL for Cimmetry tool, the following page appears at the end of installation. You can check the content of its log file by clicking the blue link or by opening the log file at the location specified.

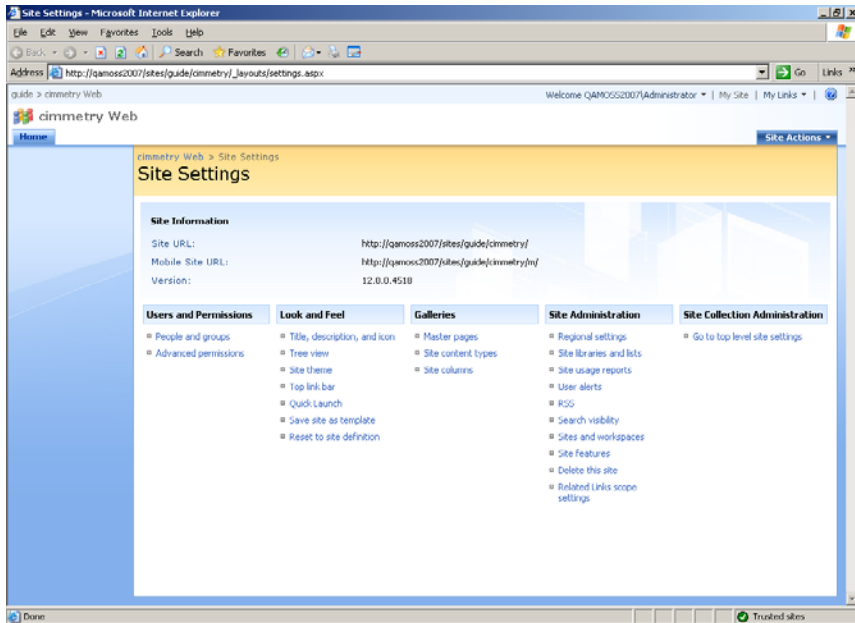


Note You need to manually update access and permission to the Cimmetry sub site for users and groups in your site. This is particularly important if a user wants to save and load markups and metafiles. The URL to the Cimmetry sub site administration page is on the previous page and the installer will open it in separate browser once you click Next.

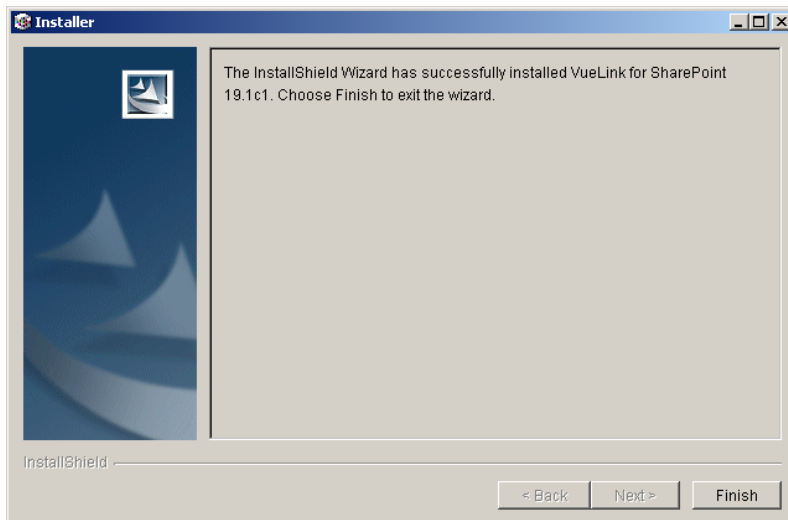
If you click the link for cimSiteLog.out you will see a page similar to the following:



- 15 If you chose to install the SharePoint component, the Cimmetry tool creates and verifies the Cimmetry sub site successfully. The installer opens the Cimmetry Administration page for managing access to Cimmetry sub site. Follow the SharePoint documentation on how to manage anonymous access, users and site groups for sites.



16 When the installation succeeds, the installer shows the following information and prompts you to finish the installation:



17 Click **Finish** to quit the Installer.

Manual installation

This section describes the steps necessary to install VueLink for SharePoint manually. In order for AutoVue Client Server and SharePoint to work properly, you must perform the following steps.

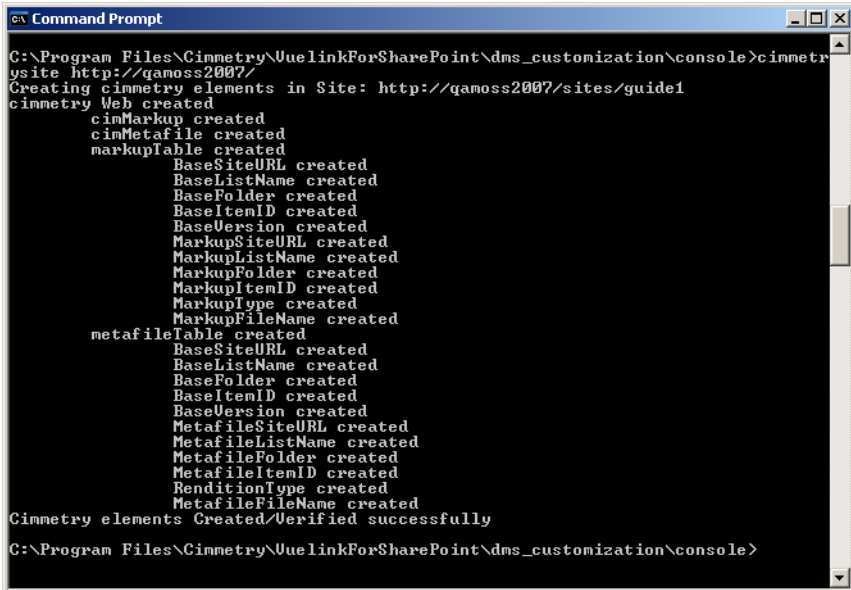
SharePoint Customization

- 1 Verify that Microsoft IIS, ASP.NET and SharePoint (WSS or SPS) are installed properly.
- 2 Copy **core.js** and **vue.aspx** files found on the distribution CD under /AutoVue_Client_Server_Edition/dms_customization/TEMPLATE/LAYOUTS/1033 / directory to <SharePoint Root>/60/TEMPLATE/LAYOUTS/1033, where <SharePoint Root> is the root folder where SharePoint is installed
(e.g. C:\Program Files\Common Files\Microsoft Shared\web server extensions).
- 3 Run the Cimmetry tool found on the distribution CD in the /AutoVue_Client_Server_Edition/dms_customization/console / directory, from command line and specify the URL of Top Level Site under which Cimmetry site/lists have to be created. The Cimmetry site is used to store all markups and metafiles generated for any document within the Top Level Site hierarchy.

After running the tool a similar output should appear on screen:

```
Creating cimmetry elements in Site: http://mytoplevelsite
cimmetry Web created
  cimMarkup created
  cimMetafile created
  markupTable created
    BaseSiteURL created
    BaseListName created
    BaseFolder created
    BaseItemID created
    BaseVersion created
    MarkupSiteURL created
    MarkupListName created
    MarkupFolder created
    MarkupItemID created
    MarkupType created
    MarkupFileName created
  metafileTable created
    BaseSiteURL created
    BaseListName created
    BaseFolder created
    BaseItemID created
    BaseVersion created
    MetafileSiteURL created
    MetafileListName created
    MetafileFolder created
    MetafileItemID created
    RenditionType created
    MetafileFileName created
Cimmetry elements Created/Verified successfully
```

You can run this tool many times for different or for the same Top Level Site. If the Cimmetry site or any part of it is already created, this tool only creates missing lists and fields. The following figure shows an example:



```
Command Prompt
C:\Program Files\Cimmetry\UelinkForSharePoint\dms_customization\console>cimmetry
ysite http://qamoss2007/
Creating cimmetry elements in Site: http://qamoss2007/sites/guide1
cimmetry Web created
  cimMarkup created
  cimMetafile created
  markupTable created
    BaseSiteURL created
    BaseListName created
    BaseFolder created
    BaseItemID created
    BaseVersion created
    MarkupSiteURL created
    MarkupListName created
    MarkupFolder created
    MarkupItemID created
    MarkupType created
    MarkupFileName created
  metafileTable created
    BaseSiteURL created
    BaseListName created
    BaseFolder created
    BaseItemID created
    BaseVersion created
    MetafileSiteURL created
    MetafileListName created
    MetafileFolder created
    MetafileItemID created
    RenditionType created
    MetafileFileName created
Cimmetry elements Created/Verified successfully
C:\Program Files\Cimmetry\UelinkForSharePoint\dms_customization\console>
```

If the specified URL has extra information, this tool extracts TopSite URL from it automatically.

For example, if `http://hostname/sites/mysite/Shared Document/folder1` is passed as argument then `http://hostname/sites/mysite` is used as target automatically.

SharePoint Extension

- 1 Copy all Cimmetry web service files (asmx, aspx) found on the distribution CD under `/AutoVue_Client_Server_Edition/dms_customization/ISAPI/` directory to `<SharePoint Root>/60/ISAPI/` where `<SharePoint Root>` is the root folder where SharePoint is installed (e.g. `C:\Program Files\Common Files\Microsoft Shared\web server extensions`).
- 2 Copy `CimWssExt.dll` from `/AutoVue_Client_Server_Edition/dms_customization/ISAPI/BIN` directory to `<SharePoint Root>/60/ISAPI/BIN` where `<SharePoint Root>` is the root folder where SharePoint is installed.

VueLink Servlet and Web Application

VueLink Servlet files are found on the distribution CD under the /AutoVue_Client_Server_Edition/vuelink_servlet directory.

The VueLink Web Application that is ready to deploy can be found on the distribution CD under the /AutoVue_Client_Server_Edition/vuelink4j2ee directory.

The recommended approach is to copy the .war file from vuelink4j2ee directory into the deployment directory of the web Application server. If the server does not support hot deployment, you need to restart the server. Otherwise the server explodes the .war file into a directory with that name.

If you want to deploy the exploded version of the VueLink web application, create a folder with name of the .war file (e.g. vuelink in the case of vuelink.war) inside the Application Server deployment directory and copy all the content of vuelink4j2ee directory into it except for the .war file. You can also unzip the .war file into the new directory instead.

Note All applet launch configurations are stored inside the vuelink.properties file and are used to initialize the AutoVue applet. If you want to change the setting, you need to update this file. It can be found under WEB-INF\lib of the VueLink application.

Configuration

See “Configuration” on page 19 for instructions for setting up VueLink.

You must complete the steps outlined under the following section:

- “Setting AutoVue Applet parameters in vuelink.properties” on page 19

Verification

See “Verification” on page 24 for verifying that VueLink works properly.

Configuration

Setting DMS launch parameter in vue.aspx

- 1 Open **Vue.aspx** file you copied under /60/TEMPLATE/LAYOUTS/1033 in step 2 of Installation DMS Extension, in a text editor such as Notepad.
- 2 Search for **__APPSERVER_HOST_PORT_CONTEXT__** and replace it with the **host:port/context** name of the VueLink application inside the web application server, where “host” is the server name where VueLink is installed, “port” is the J2EE application server, and “context” is the VueLink web application name. For example: “SharepointServer:8080/VueLink.

Setting AutoVue Applet parameters in vuelink.properties

- 1 Open the **vuelink.properties** configuration file that is inside WEB-INF\lib of the VueLink application.
Note You may need to extract the VueLink application and redeploy it. If you expect to change the vuelink.properties more than once, we recommend that you deploy the exploded version of the VueLink.

2 Modify the following settings:

```
jVueServer=localhost:5099
appServer=localhost:8080
appContext=_APPSERVERCONTEXT_
CodeBase=_CODEBASE_
```

Where

jVueServer	Is the host:port address of AutoVue server that VueLink application should communicate with. This value will be used to replace <code>_JVUESERVER:JVUESERVERPORT_</code> inside <code>csiApplet.html</code>
appServer	Is the host:port address of web application server that is deploying VueLink application. This value will be used to replace <code>_APPSERVER:ASPORT_</code> inside <code>csiApplet.html</code>
appContext	Is the context name of VueLink application inside web application server (e.g. <code>/vuelink</code>). This value will be used to replace <code>_VUELINKCONTEXTPATH_</code> inside <code>csiApplet.html</code>
CodeBase	Is the path to jVue folder in web/application server This value will be used to replace <code>_CODE_BASE_</code> inside <code>csiApplet.html</code>

Enabling Markup and Metafile Functionality for New Sites

If new topsites are created after VueLink has been installed, the SharePoint Administrator needs to create and configure the Cimmetry subsite, so that you can save markups and metafiles. Take the following steps for the newly added topsites:

- 1 On the SharePoint server, run **Cimmetrysite.exe** `<URL_to_the_topsite>`.
Cimmetrysite.exe is included in the VueLink distribution and is located at **AutoVue_Client_Server_Edition/dms_customization/console**.

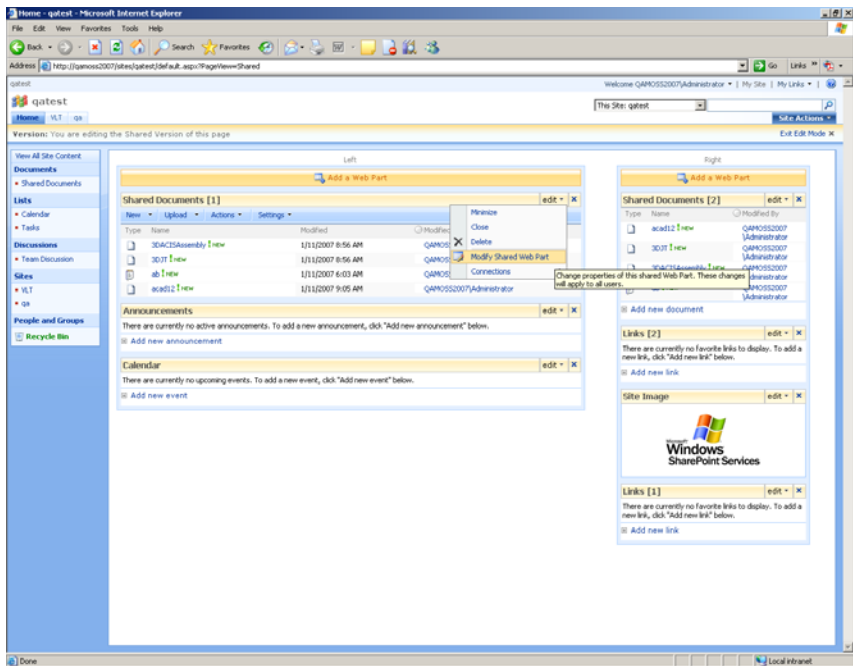
Running Cimmetrysite.exe creates a Cimmetry subsite under the specified topsite.

- 2 Logon to SharePoint as the Site Administrator and manually configure access and permission to the Cimmetry subsite.
Users with proper access can now save markups for files in the new topsite.

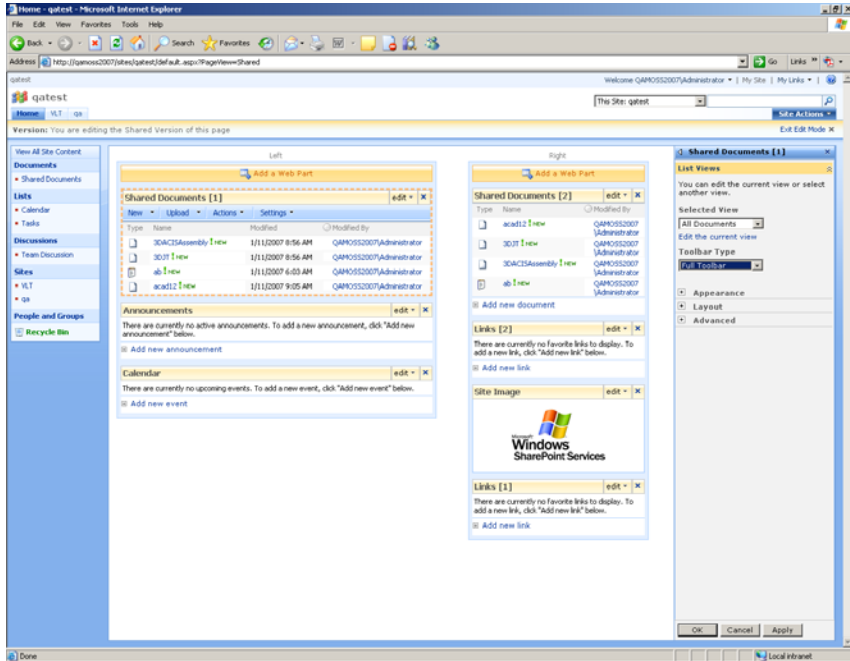
Enabling Viewing Files using Web Parts

Take the following steps to enable Autovue viewing for files using Web Part:

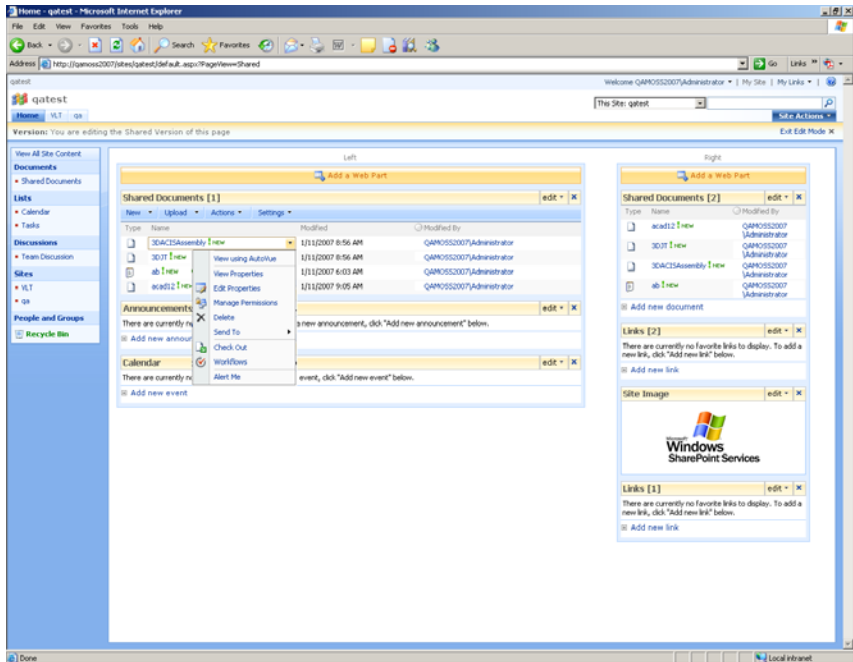
- 1 In Shared Documents, click **edit > Modify Shared Web Part**.



- 2 In the options that appear, select **All Documents** as the **Selected View** and **Full Toolbar** as the **Toolbar Type**, then click **Apply**.



Customized AutoVue options are now available.



Verification

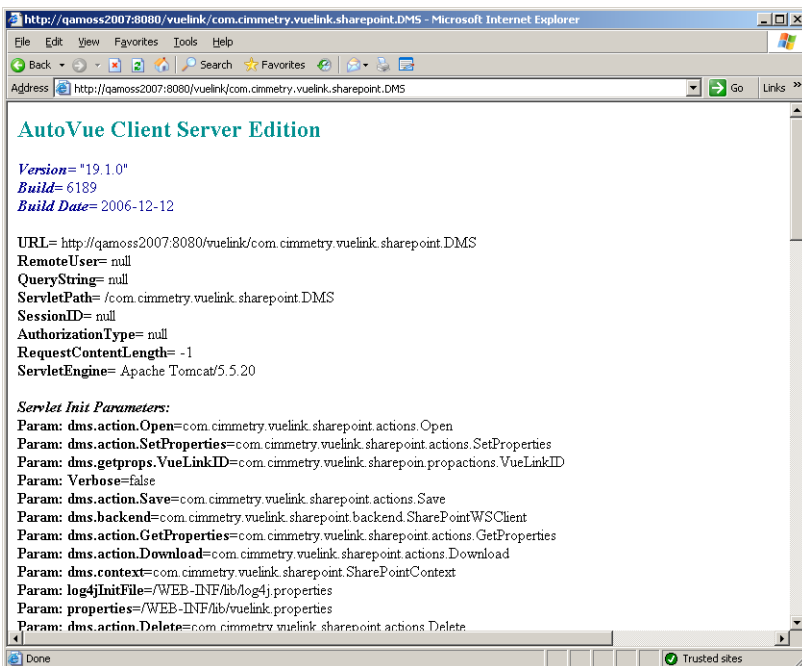
Verifying that VueLink is running properly

To verify that the VueLink Servlet (`com.cimmety.vuelink.sharepoint.DMS`) is running properly, launch your Web browser and enter the URL pointing to the Servlet alias name, which you assigned when installing `Vuelink.war` into the application server.

Here is an example of a URL:

`http://127.0.0.1:8080/servlet/com.cimmety.vuelink.sharepoint.DMS`

The following figure shows a sample response if VueLink is running properly. If you do not get a response similar to the one shown in the following figure, verify that the VueLink Servlet is installed and deployed properly and that your application server is running and is functioning properly.



The Build number and Build Date are also shown in the response above.

Running VueLink in Debug Mode

VueLink for SharePoint uses apache log4j package for logging. Default configurations are set in log4j.properties inside WEB-INF\lib folder of the VueLink application.

You can change the level and location of output by modifying this file. The following figure shows the different levels of logging available:

Will Output Messages Of Level

	DEBUG	INFO	WARN	ERROR	FATAL
Debugger Level	DEBUG	INFO	WARN	ERROR	FATAL
DEBUG	Green	Green	Green	Green	Green
INFO	Red	Green	Green	Green	Green
WARN	Red	Red	Green	Green	Green
ERROR	Red	Red	Red	Green	Green
FATAL	Red	Red	Red	Red	Green
ALL	Green	Green	Green	Green	Green
OFF	Red	Red	Red	Red	Red

For example, if you want to elevate log to DEBUG level then set **log4j.logger.com.cimmetry.vuelink=DEBUG** inside the previously-mentioned file.

For more information on log4j capabilities, refer to log4j documentation.

Feedback

Cimmetry Systems products are designed according to your needs. We would appreciate your feedback, comments and suggestions. We can be contacted by fax, e-mail or telephone. A new addition to our Web page is a feedback button that activates an easy-to-use feedback form. Let us know what you think!

General Inquiries

Telephone: +1 514-735-3219
Fax: (514) 735-6440
E-mail: info@cimmetry.com
Web Site: <http://www.cimmetry.com>

Sales Inquiries

Telephone: +1 514-735-3219 or 1-800-361-1904
Fax: (514) 735-6440
E-mail: sales@cimmetry.com

Customer Support

Telephone: +1 514-735-9941
Web Site: <http://www.cimmetry.com/support>

