
***AutoVue Integration SDK
&
Sample Integration for
Filesys***

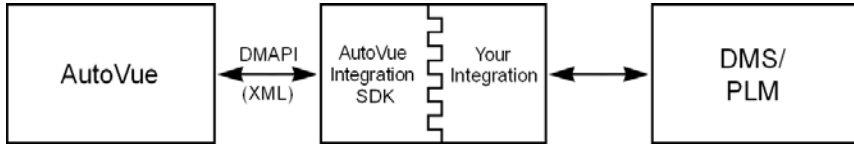
Introduction and Overview

Contents

INTRODUCTION	1
GETTING STARTED	2
OVERVIEW OF SDK COMPONENTS	4
Documentation	4
Eclipse Project	5
Framework (VueLink Core)	6
Sample Integration	7
AutoVue Components	9
Third-Party Libraries	10
FEEDBACK	11
General Inquiries	11
Sales Inquiries	11
Customer Support	11

Introduction

The AutoVue Integration SDK is intended for third-party developers who want to integrate AutoVue Client-Server Edition (CSE) with their Document Management System (DMS) or Product Lifecycle Management System (PLM).

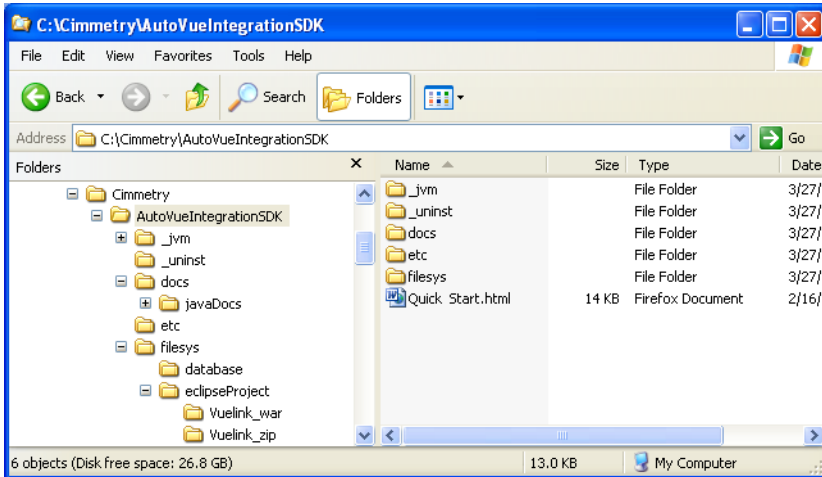


AutoVue CSE is a thin client viewing and collaboration solution for enterprise-wide data access. Its Document Management Application Programming Interface (API), or "DMAPI", allows for a very tight-knit integration with Document Management Systems (DMS).

The AutoVue Integration SDK is a Java-based implementation of this DMAPI specifications published by Cimmetry Systems Corp. For more information, refer to the **Java DMAPI** document.

Getting Started

After you run the SDK installer on your machine, it creates several folders. Here is a screen shot of the folder structure created when the SDK is installed on Windows XP.



The **Quick Start.html** file found in the root folder is a top-level readme file that acts as an entry point to the rest of the documentation included in this SDK. To view the content of this file, open it in your browser.

Here is a brief description of what is contained in each folder found in this SDK:

- The **/docs** folder contains SDK documentation (javadocs, installation guide, user guide, and so on).
- The **/filesystem/database** folder contains 2D and 3D sample files used by the sample integration.
- The **/filesystem/eclipseProject** folder contains an Eclipse project (single WAR or separate ZIP files) that you can easily import into your Eclipse workspace. This folder contains source code for the sample integration, AutoVue client and third-party libraries required by the integration.
- The **/_jvm** and **/_uninst** folders are for uninstalling the SDK.

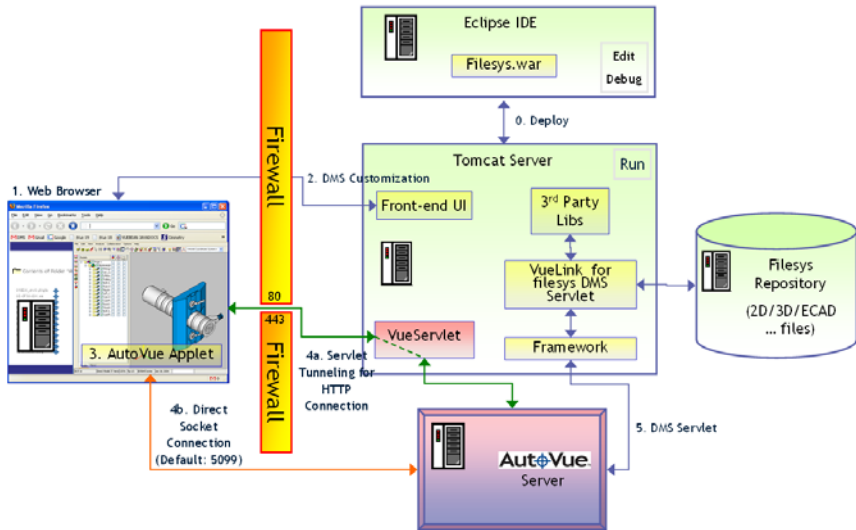
Once you have run the SDK installer, you need to import the **Eclipse project**, then deploy and run the sample integration (Filesys DMS). To do so, you must follow steps outlined in the **Installation Guide**. You need to make sure that you have all the prerequisite software installed before you start deployment. For the

complete list specific to your platform, refer to the System Requirements section found in the **Installation Guide**.

Once you have successfully deployed the Eclipse project, the next step is for you to get familiar with the sample integration. To learn more about the features and functionality provided by the sample integration, refer to the **User Guide**.

Once you are familiar with the sample integration, the next step is for you to build your own integration. To do so, refer to the **Technical Guide** and **Javadocs**. The Technical Guide explains the technical details and provides step by step guidance for developing your own integration.

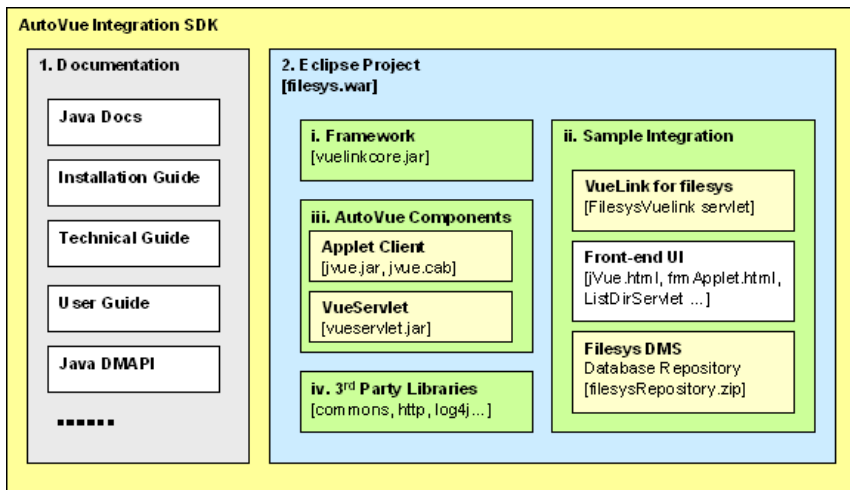
The following high-level architectural diagram shows how various components included in the AutoVue Integration SDK are related to each other as well as to other components. For a more detailed description about this architectural diagram, please refer to **Technical Guide**. The next section, [Overview of SDK Components](#), briefly describes each component included in this SDK.



Overview of SDK Components

The following figure shows various components included in the AutoVue Integration SDK. There are two main components and four main subcomponents:

- 1 [Documentation \(page 4\)](#)
- 2 [Eclipse Project \(page 5\)](#)
 - i. [Framework \(VueLink Core\) \(page 6\)](#)
 - ii. [Sample Integration \(page 7\)](#)
 - iii. [AutoVue Components \(page 9\)](#)
 - iv. [Third-Party Libraries \(page 10\)](#)



Documentation

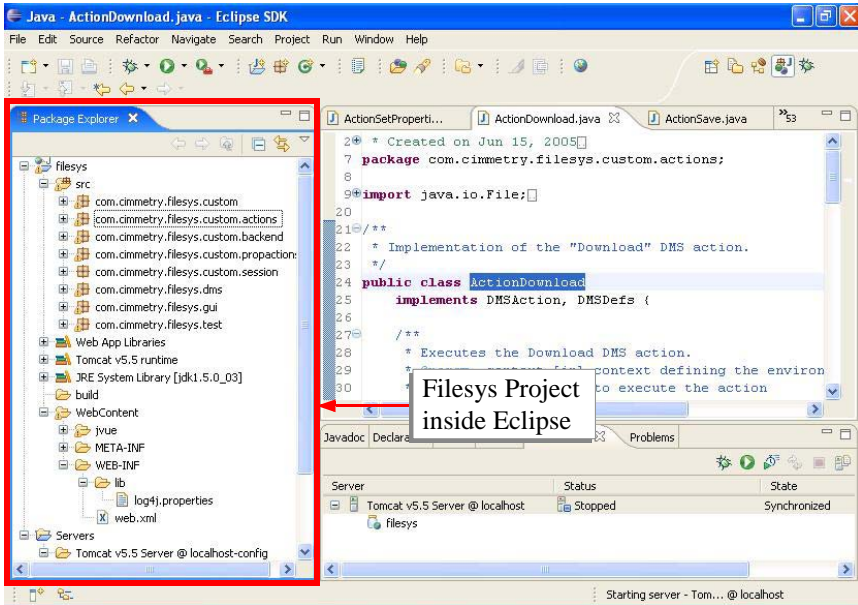
The documentation included in the AutoVue Integration SDK is under the `/docs` folder and contains following:

- **Installation Guide**
 - This guide contains information related to the installation, configuration, and deployment of the Eclipse project included in this SDK.
- **User Guide**

- This guide contains information related to functionality available to the end user of the sample integration included in this SDK.
- **Technical Guide**
 - This guide contains in-depth technical information about the integration framework and describes how to implement your own integration based on the sample integration included in this SDK.
- **Java DMAPi**
 - This guide contains information related to Java Document Management API (DMAPi); XML specification of each HTTP request made by the AutoVue server and the response it expects back.
- **JavaDocs**
 - This contains the JavaDocs of the DMAPi of underlying framework contained in the AutoVue Integration SDK.

Eclipse Project

Eclipse is an industry-standard tool for developing Java applications (see www.eclipse.org). The AutoVue Integration SDK bundles a sample integration into an Eclipse-based project. This project is located under the **filesystem\ eclipseProject** folder and is available as single Web ARchive: WAR (filesystem.war) and separate zip files (jvue.zip, src.zip, WEB-INF.zip). This provides you with the option of either importing the project from a single WAR file into your Eclipse workspace, or manually creating a project and adding individual pieces to it.



The Eclipse project contains four main subcomponents:

- [Framework \(VueLink Core\) \(page 6\)](#)
- [Sample Integration \(page 7\)](#)
- [AutoVue Components \(page 9\)](#)
- [Third-Party Libraries \(page 10\)](#)

Framework (VueLink Core)

The framework is implemented based on Java Servlet API provided by SUN as part of J2EE. The main class is called `com.cimmetry.vuelink.Vuelink` which extends `javax.servlet.http.HttpServlet`. Servlets do not run on their own; they require a servlet engine such as Tomcat (see tomcat.apache.org).

The framework links AutoVue system with third-party DMS. Integration framework receives requests from AutoVue, obtains information from the DMS, and builds responses back to AutoVue.

The framework provides plumbing for parsing XML requests received from the AutoVue server as well as constructing XML responses sent back to the AutoVue server. The framework uses XML parser libraries included in your tomcat servlet container.

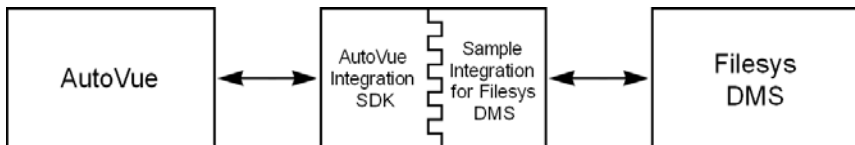
The AutoVue Integration SDK framework defines a set of interfaces and classes that facilitate the integration task. The AutoVue Integration SDK framework is packaged into **vuelinkcore.jar** and contains many packages, including the following:

- com.cimmetry.vuelink
- com.cimmetry.vuelink.authentication
- com.cimmetry.vuelink.backend
- com.cimmetry.vuelink.context
- com.cimmetry.vuelink.property
- com.cimmetry.vuelink.io
- com.cimmetry.vuelink.query
- com.cimmetry.vuelink.util
- com.cimmetry.vuelink.xml

The framework uses log4j for logging messages into the application server log file or console.

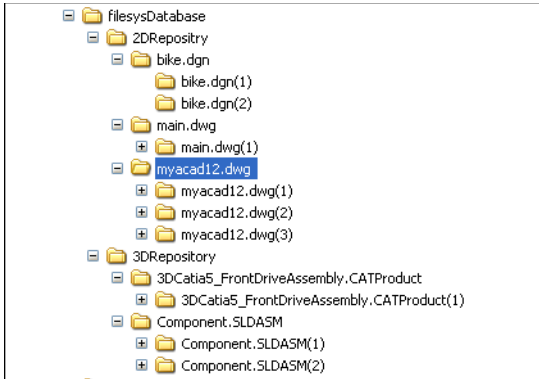
Sample Integration

The SDK includes a sample integration of a simplified file system management (filesys). This sample includes "Sample Integration for filesys DMS", and is the starting point for developing your own integration and getting familiar with AutoVue Integration SDK.



The Filesys DMS comes with a database repository that is preloaded with some sample files in 2D and 3D formats. To simplify things, the structure of this

repository is based on the local file system and requires a basic understating of files and folders. Markups and renditions are stored back into this repository.



The sample integration demonstrates how you can add basic and advanced functionalities to your own integration, including:

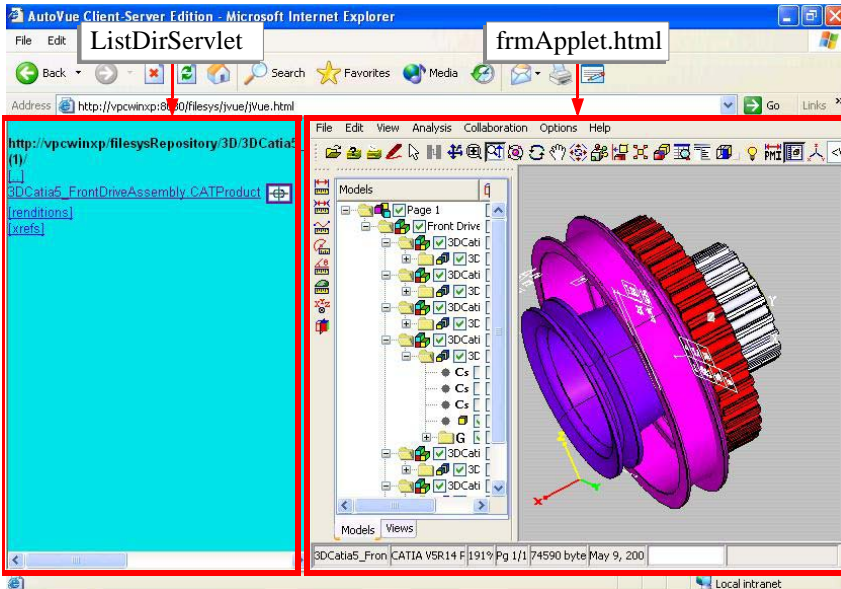
- Document viewing of native formats
- Retrieve document attributes
- Create, save and review markups.
- Browse DMS repository
- Search DMS repository
- Compare document versions
- Convert documents to other formats
- Override behavior of single DMAPAPI without need to recompile the code

The sample integration for Filesys contains many packages, including the following:

- com.cimmetry.vuelink.filesys.actions
- com.cimmetry.vuelink.filesys.backend
- com.cimmetry.vuelink.filesys.dms
- com.cimmetry.vuelink.filesys.dms.gui
- com.cimmetry.vuelink.filesys.propactions

The sample integration includes a front-end UI which allows users to navigate the Filesys DMS data structure. This UI consists of a single servlet called **com.cimmetry.vuelink.filesys.dms.gui.ListDirServlet** and some HTML pages (jvue.html, frmApplet.html, and so on). The main HTML page contains two frames as shown in the following figure.

- The frame on the left displays the structure of Filesys DMS data. The content of this frame is displayed by ListDirServlet which allows you to navigate the Filesys DMS by expanding folders and selecting documents to view.
- The frame on the right displays the AutoVue applet using frmApplet.html. When you click a document in the frame on the left, it displays in the frame on the right.



AutoVue Components

The SDK bundles following two components of AutoVue CSE:

- AutoVue Applet Client (jvue.jar / jvue.cab)
 - Referenced by frmApplet.html which contains HTML code for AutoVue Applet (<applet> tag).
- VueServlet tunneling servlet (vueservlet.jar)
 - This servlet is used to allow AutoVue applet connects to AutoVue Servlet.

The AutoVue Integration SDK does not bundle AutoVue server. You need to download and install it separately. Refer to the **Installation Guide** for more information.

Third-Party Libraries

The AutoVue Integration SDK bundles several third-party open-source libraries needed by the framework, such as **org.apache.log4j** and **org.apache.commons.httpclient**.

Feedback

Cimmetry Systems products are designed according to your needs. We would appreciate your feedback, comments or suggestions. Contact us by fax, e-mail or telephone. There is a feedback button on our Web page that activates an easy-to-use feedback form. Let us know what you think.

General Inquiries

Telephone: +1 514-735-3219

Fax: (514) 735-6440

E-mail: info@cimmetry.com

Web Site: <http://www.cimmetry.com>

Sales Inquiries

Telephone: +1 514-735-3219 or 1-800-361-1904

Fax: (514) 735-6440

E-mail: sales@cimmetry.com

Customer Support

Telephone: +1 514-735-9941

Web Site: <http://www.cimmetry.com/support>

