



# Using Eclipse Tools Bundle to Develop for the GlassFish Server

7001\_glassfisheclipse Lab

Davis Nguyen  
Rochelle Racciah  
Sun Microsystems

# Prerequisites

- **Hardware**

- Please bring your own laptop

- **Software**

- Download the GlassFish Tools Bundle for Eclipse from  
<http://download.java.net/glassfish/eclipse>
  - If possible, please complete Exercise 0 to install the software

# Hands-on Lab Tips for Success

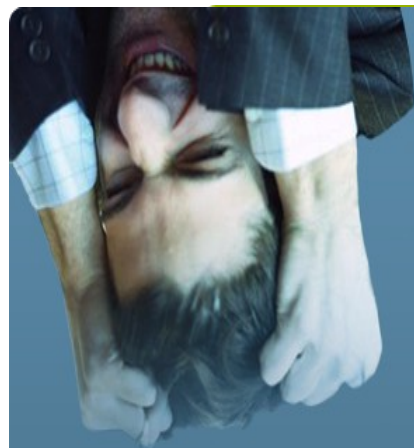
- Instructor(s) will provide background for exercises
- Exercises are self-paced
  - Hard-copy and online lab guides are available
  - Use suggested durations as a guide
- Raise your hand at any time for assistance
- To get the most out of the lab...
  - **Read** the lab guide, especially the background
  - **Don't** just copy and paste the solutions

# GlassFish Eclipse Tools Bundle

## Product Introduction



# Architecture



**Installer**

Eclipse Java EE IDE

GlassFish v2.1, v3prelude  
JDK1.6 (optional)

GlassFish Eclipse Plugins

Registration

Eclipse

User

Workspace:

v2.1 domain  
v3 domain  
JavaDB config  
Java EE projects  
User settings



# Size of the Bundle

Component in the Installer	Size (375Mb with JDK, 265Mb without)
Eclipse	164Mb
GlassFish v2.1	87Mb
GlassFish v3 Prelude	29Mb
GlassFish Plugin for Eclipse	10Mb (with ee javadoc)
Registration Configuration	0.5
JDK 1.6 U12 (optional)	90Mb

- JBoss Dev Studio 2.0 RC2 +EAP = 617Mb (No JDK)
- Oracle Workshop for WebLogic 10.2 = 748Mb (No JDK)

# Exercises

- **Exercise 0:** Download, Install & Test
- **Exercise 1:** Introduction to the Tools Bundle
  - Expected duration: 30 minutes
- **Exercise 2:** Application Development using the Tools Bundle
  - Expected duration: 30 minutes

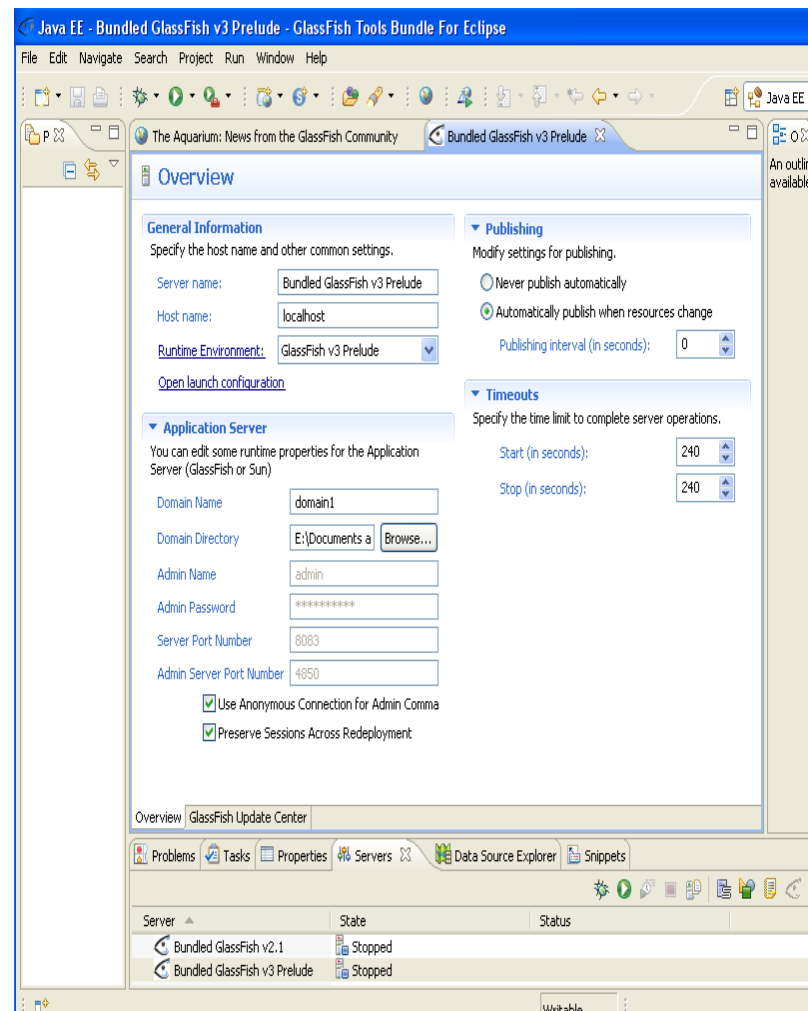
## Exercise 0: Download and Install the GlassFish Eclipse Tools Bundle

- If you have not yet downloaded the Tools Bundle, please do so now
- Bits are available at:
  - <http://download.java.net/glassfish/eclipse>
  - On the local server at <http://hol.javaone.net/software/glassfish-tools>
  - On the DVD under software/glassfish-tools-bundle-1.0



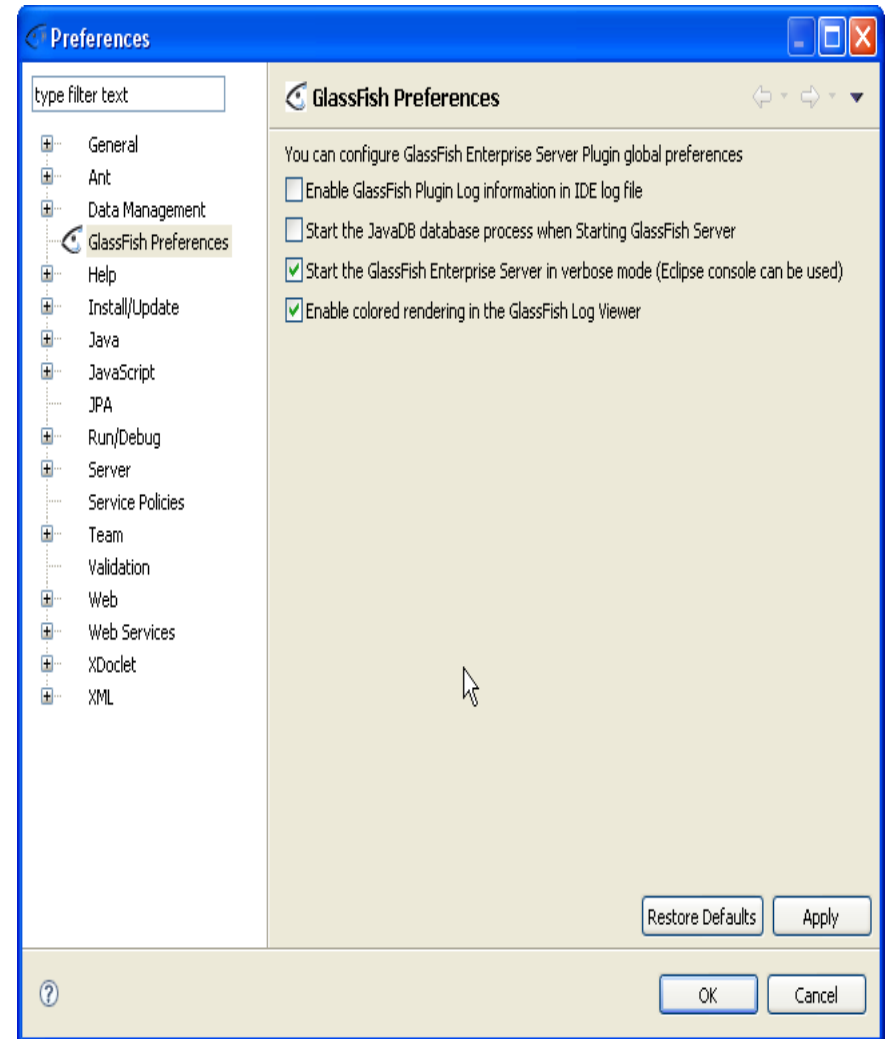
# Exercise 1: Introduction to the Tools Bundle

- Read the background info
- Server Usage
- Server Configuration Editor
- Server Global Preferences



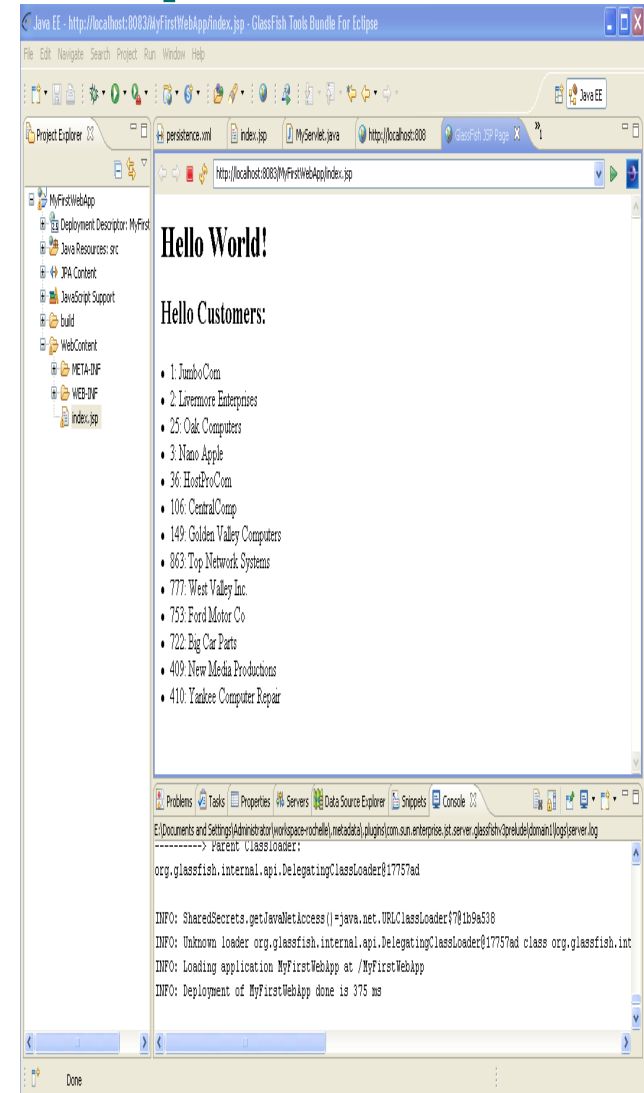
# Exercise 1: Introduction to the Tools Bundle (continued)

- Administration Console
- Update Center
- JavaDB Database
- Registering
- Time: 30 minutes



## Exercise 2: Application Development using the Tools Bundle

- Read the background info
- Create a Dynamic Web Project
- Use Session Preservation
- Add JPA Functionality
- Time: 30 minutes



## For More Information

- Please take the lab exercises with you.
  - For help or comments, please email us at:  
[users@glassfishplugins.dev.java.net](mailto:users@glassfishplugins.dev.java.net)  
or, [dev@glassfishplugins.dev.java.net](mailto:dev@glassfishplugins.dev.java.net)
- Visit <https://glassfishplugins.dev.java.net/> to get more involved in the GlassFish Plugins community.
- 
- You can attend session TS-5055 at JavaOne on Friday at 1:30

**THANK YOU!!**



# thank you

## Using Eclipse Tools Bundle to Develop for the GlassFish Server

7001\_glassfisheclipse Lab

Davis Nguyen  
Rochelle Raccach  
Sun Microsystems