

# GlassFish V3 Admin CLI

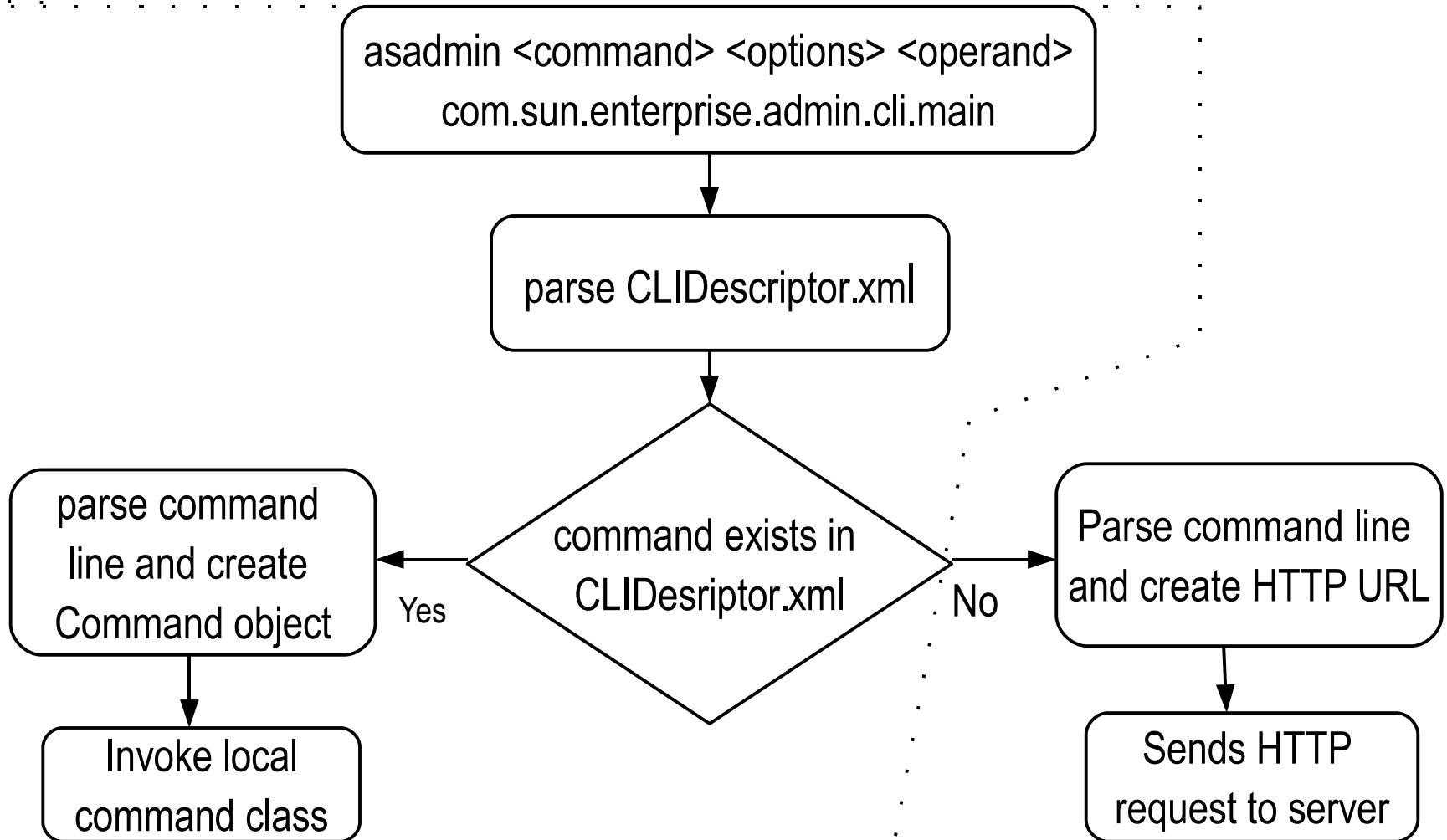
Jane Young  
janey@dev.java.net  
January 14<sup>th</sup> 2008

# Agenda

- Admin CLI
- Local Commands
- Remote Commands

# Admin CLI

- v3/admin/cli and v3/admin/cli-framework modules



# Local Commands

- Same as in GF V2

# Remote Commands

- HTTP URL Get/Post – REST Web Services
- For Admin CLI Commands, the HTTP URL is:  
`http://<host>:<port>/__asadmin/<command>?<option-name>=<option-value>?DEFAULT=<operand>`
- URI containing “\_\_asadmin” invokes the AdminAdapter class on the server side (Grizzly Adapter)
- AdminAdapter class searches for the command class in the inhabitat
- executes the command class

# Remote Command Class

- Located in the module repository
- Implements AdminCommand class
- @Service annotation – name of the command -- Gfv3 depends on this information to find the Service.
- @Param annotation – command option
- @Param (primary=true) – command operand
- @Inject – inject dependent Service (i.e. @Inject  
Domain domain;)

# Remote Command Class – cont'd

- Example

```
package com.foo.bar;
@Service(name="dummycommand")
@Param
String option1;
@Param(optional=true, shortName="o")
String option2;
@Param(primary=true)
String operand;
public class DummyCommand implements AdminCommand {
    public void execute(AdminCommandContext context) {
        ...
    }
}
```

# Remote Command Class – cont'd

- AdminCommandContext
  - > Utility containing useful services
    - > ActionReport
    - > CommandParameters
    - > Logger



# Remote Command Class – cont'd

- What is returned to the client?
  - > From CLI: `java.util.jar.Manifest`
    - > where message is saved in the Manifest's main Attribute:  
`getMainAttribute().putValue("message", <value>);`
  - > From browser: HTML

# Remote Command -- Why?

- Location independent – loadable from any module
- Extensible – no preset list of commands, commands are discovered on demand
- Lightweight client – no need to add command jar files in the classpath of asadmin
- Injection dependency – use injection to express dependencies
- CLI via browser