



GlassFish in real life

Deployment Stories



Wotif.com GlassFish Case Study

Greg Luck
Chief Architect, Wotif.com



Wotif.com Case Study

Key facts and figures

- Australia's No 1 Hotel Booking Site
- Rapidly Growing elsewhere
- 1,000,000 users
- 10,000 concurrent users
- 3.6 million room nights sold per year
- 9000 hotels
- Very Large Pages by design (some > 1.5MB)

Source: <http://blogs.sun.com/stories/entry/wotif>
<http://www.networksasia.net/ena/article/articleDetail.jsp?id=393040>
http://info.wotif.com/pdf/Wotif.com_Facts_Figures.pdf



Wotif.com Case Study

Screen shots – Home Page

wotif.com
28 days of great deals!

Home | About Us | Contact Us | Investors | Suppliers

GREAT RATES for a broad range of hotels, motels, apartments, resorts and bed & breakfasts in over 35 countries. Book last-minute accommodation or up to 28 days in advance.

Wot's On?

- [FINA World Swimming Championships Melbourne](#)
- [Adelaide Fringe](#)
- [Autumn Bed & Breakfast deals](#)
- [INXS Accommodation](#)

Gift voucher?

Search Accommodation

- Country
 - Australia
 - Austria
 - Belgium
 - Brazil
- Destination (browse all)
 - Sydney
 - Sydney CBD
 - Melbourne
 - Melbourne CBD
 - Brisbane
 - Gold Coast
 - Sunshine Coast
 - Adelaide
 - Perth
 - Canberra
 - Darwin
 - Hobart
 - NSW
- All Days Weekends (Fri-Sun)

Search

Wot's Hot?

- Melbourne **Easystay The Bayside Motel** AU\$75 economy room, great location on vibrant Fitzroy St, room incl. tv, fridge, tea/coffee & ensuite!
- Adelaide **Oaks Embassy** AU\$182 deluxe 1 bedroom, incl. use of the pool, gym, spa, sauna & steam room, spacious apartment!
- Perth **Hyatt Regency Perth** AU\$235 Hyatt Guest Room, incl. newspaper & use of the Hotels Gym and Sauna!
- Newcastle **Quest Newcastle** AU\$160 1 bedroom apartment, incl. a bottle of Hunter wine on arrival and parking!
- Melbourne **Punt Hill South Yarra - Punt Road** AU\$115 one bedroom, spacious apartment with fully equipped kitchen, tv and dvd player!
- Launceston and Tamar Valley (TAS) **Country Comfort Coach House** AU\$99 queen/twin special, incl. unlimited broadband and Astar, don't miss out!
- Sunshine Coast **Australis Noosa Lakes** AU\$99 one bedroom 3 nights, incl. parking, enjoy the use of 3 lagoon style pools or relax on your balcony!

[Newsletter subscribe or unsubscribe](#)

Advanced Search Options
Get more specific results by selecting to display only properties matching these criteria:

Property type: Room type: Min. rating: Max. price: per night Hotel name:

Restaurant Fitness Centre Broadband Internet
 Kitchen/ette Balcony Satellite/cable TV
 Pool 24hr front desk In-room Spa

Advanced Search

Terms & Conditions | Privacy | Security | Feedback | Help

VISA | MasterCard | American Express | Discover | PayPal

Source: <http://wotif.com>



Wotif.com Case Study

Screen shots – Search Results

wotif.com 28 days of great deals! Home About Us Contact Us Investors Suppliers

Choose Accommodation

Advanced Search Options Get more specific results by selecting to display only properties matching these criteria:

Property type: All types Room type: All rooms Min. rating: All Max. price: \$ per night Hotel name:

Restaurant Pool Balcony Broadband Internet In-room Spa
 Kitchen/ette Fitness Centre 24hr front desk Satellite/cable TV **Advanced Search**

Showing properties in: Sydney **Go**

Currency Converter **Now showing all days** **Next Seven Days** 27 Mar - 9 Apr **Change to weekends**

Sydney	Full Rate	Tue 20 Mar	Wed 21 Mar	Thu 22 Mar	Fri 23 Mar	Sat 24 Mar	Sun 25 Mar	Mon 26 Mar	Tue 27 Mar	Wed 28 Mar	Thu 29 Mar	Fri 30 Mar	Sat 31 Mar	Sun 1 Apr	Mon 2 Apr
Amora Hotel Jamison ★★★★★ Next	\$536	SOLD	\$350	\$300	\$220	\$250	\$220	\$300	\$300	\$300	\$300	\$210	\$220	\$220	\$250
BLUE Sydney - A Taj Hotel SELF RATED Next	\$520	\$420	\$300	\$300	\$280	\$280	\$220	\$420	SOLD	\$280	\$280	\$280	\$280	\$250	\$220
Establishment Hotel SELF RATED Next	\$415	SOLD	SOLD	SOLD	SOLD	SOLD	\$290	\$320	SOLD	SOLD	\$350	SOLD	SOLD	\$290	\$330
Four Seasons Hotel Sydney ★★★★★ Next	\$440	\$450	\$450	SOLD	\$300	SOLD	\$300	\$450	\$450	\$450	\$450	\$300	\$300	\$260	\$350
Fraser Suites Sydney SELF RATED Next	\$420	\$266	\$266	\$266	\$294	\$294	\$252	\$266	\$266	\$266	\$266	\$294	\$294	\$252	\$266
Hilton Sydney ★★★★★ Next	\$530	\$430	\$430	\$345	\$295	\$295	\$295	\$325	\$325	\$325	\$325	\$345	\$345	\$245	\$395
InterContinental Sydney ★★★★★ Next	\$465	SOLD	\$485	\$440	SOLD	\$440	\$440	\$485	\$410	\$410	\$410	\$485	\$410	\$320	\$320
Kirketon Boutique Hotel SELF RATED Next	\$220	SOLD	SOLD	SOLD	SOLD	SOLD	\$145	\$145	SOLD	SOLD	SOLD	SOLD	SOLD	SOLD	SOLD
Marriott Sydney															

- + 15 more screenfuls for a total of 1.5MB
- Support many of these per second

Source: <http://www.wotif.com/search/Simple?refine=simpleSearch&country=1®ion=1&viewType=all>



Wotif.com Case Study

Technology Platform

- Sun AMD64 Servers
- RHEL5
- 64bit Java technology – 5 moving to 6
- GlassFish V1 UR1
- Open Message Queue
- Oracle & MySQL
- Full stack Java EE 5
- Also lots of open source, including ehcache



Wotif.com Case Study

Why we chose Glassfish?

- Needed to move off Orion
- Wanted Java EE 5, open source or cheap
- Wanted commercial support
- Path to the future
- Considered JBoss, Geronimo, non-Java EE like Tomcat and Resin.
- Evaluated by doing a small test port of the busiest pages and running it in our performance and stress test environment
- Worked Great!



Wotif.com Case Study

Porting Experience

- Started with 8 spikes including performance, stability and security
- 5 devs took one month
- J2EE 1.3 > Java EE 5 (Servlet 2.5, JSP 2.1, EJB 3)
- Required extensive regression testing
- Dev issues:
 - Bugs
 - Memory use
 - Startup and deploy times
- Upgraded Dev machines to 3GB and some to dual core
- Went live January 2007



Wotif.com Case Study

Bugs Raised

- We have raised around 10 bugs on Glassfish. Most of these are now closed.
- There is a PermGen memory leak on redeploy. Developers have to restart after about 10 deploys.
- The guide to configuring domain.xml is very patchy. It is a lot of trial and error to tune your app. We need a tuning guide. I have already suggested this to Jeanfrancois Arcand.
- The QuickStart feature is **very** buggy. We turned it off to resolve a whole host of bugs we had. We suggest it is turned off by default until it is fixed.
- Unfortunately we hit a show stopper in SSL with Grizzly. Used Catalina which is done using a system property



Wotif.com Case Study

Extending Glassfish with Other Open Source Projects

- Ehcache – distributed cache. We use inter alia for HTTP response caching
- Spnego – A JMAC plugin for Kerberos



Wotif.com Case Study

Ehcache

- Required some minor changes to the Caching Filter to support GlassFish. Version 1.2.4 supports GlassFish
- Hibernate Persistent Object and Collection Caches
- Distributed Page Caches in a “Customer” cluster
- AJAX XML Response Caches
- Distributed Java technology Object Caches
- 5 GB Heap. Requires fine tuning of GC
- Uses SelfPopulating and Blocking Cache
- Web Cache Full Page & Fragment Web Filters
- Disk Store and Persistent Disk Stores



Wotif.com Case Study

Spnego

- Spnego is an SPNEGO and Kerberos plugin for GlassFish.
- Enables GlassFish to participate in a Single Sign On environment using Kerberos.
- Works with IE, Firefox and Safari on Linux, Windows and Mac OS X
- First version finished and will be released soon
- Requires GlassFish V2 and JDK6
- Developed by Wotif.com and Sun.
- CDDL License
- <http://spnego.ocean.net.au>



Wotif.com Case Study

Future Plans

- Moving to GlassFish V2 in August
- Implementing an Enterprise Message Queue using Open Message Queue 4.
- Moving to Java 6 in August
- Implementing an enterprise wide Kerberos Single Sign On IAM. Will start using SPNEGO module with GlassFish in August.
- Maybe: Port two RoR apps to JRuby and run in GlassFish



Relevant Sessions at JavaOne

Ehcache

Session ID: TS-6175 Session Title: Distributed Caching, Using the JCACHE API and ehcache, Including a Case Study on Wotif.com

Track: The Next Generation Web

Room: Esplanade 307-310

Date: Tuesday 08-MAY-07 Start Time: 10:50

SPNEGO

JMAC Birds of a Feather Session (Ron Monzillo of Sun)



Q&A



Harvard's Dataverse Network on GlassFish

Merce Crosas



Who are we? What do we do?

Introduction to the Dataverse Network

- The Dataverse Network is a data-sharing project housed at Harvard's Institute of Quantitative Social Science.
- It has been written from scratch since 2006 (based on its precursor, the Virtual Data Center).
- It allows researchers and students to:
 - Disseminate and cite data
 - Replicate published work
 - Perform on-line data analysis
- It's currently used by Harvard and MIT at: <http://dvn.iq.harvard.edu/dvn> (Beta)
- Other Universities and research centers are adopting it as well (for example, ODUM at the UNC).
- We are extending it to support data in other research fields.

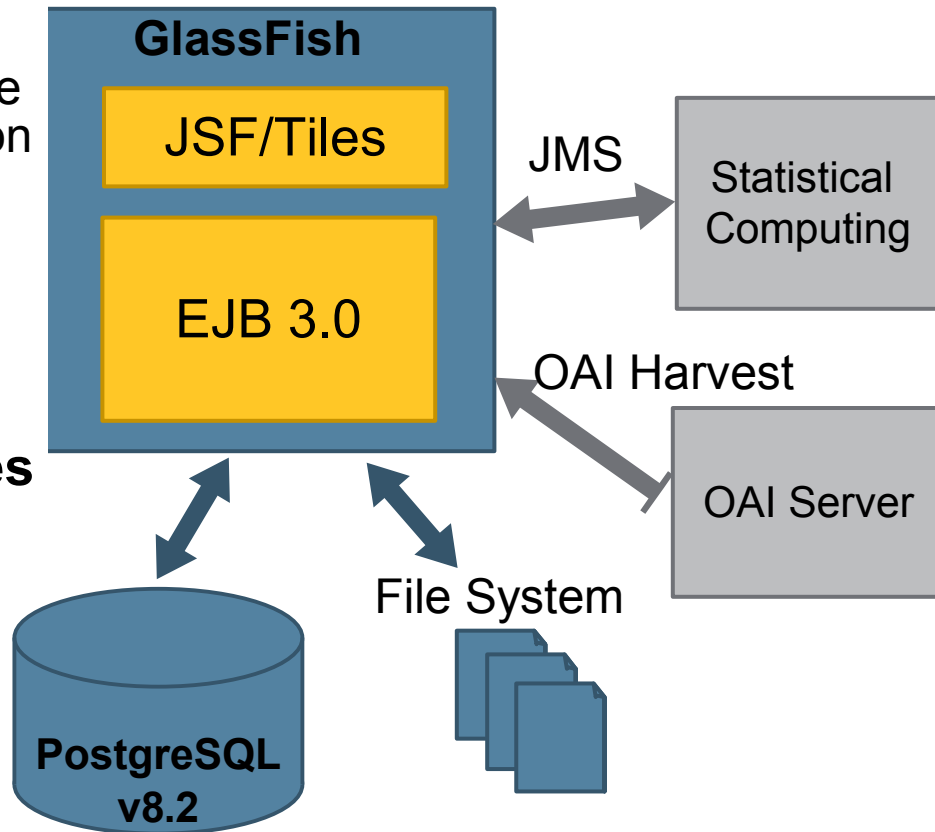


Why GlassFish?

- Two main reasons:
 - Free, Open Source – The Dataverse Network is open source and relies on other open source technologies.
 - Java EE 5 compliant – Need a maintainable and rapid to develop architecture: EJB3 and JavaServer Faces.

Other Open Source Technologies we use:

- Apache Lucene 2.0 (index/search)
- Shale Tiles Integration
- OAIHarvester, OAICat
- R, Zelig (statistical computing)



Configuring GlassFish: postgresSQL

Sun Java™ System Application Server Admin Console

Resources > JDBC > Connection Pools > VDCNet-devpool

General | Advanced | Additional Properties

Edit Connection Pool

Modify existing JDBC connection pools. A JDBC connection pool is a group of reusable connections for a particular database.

General Settings

Name: VDCNet-devpool

Datasource Classname:
Vendor-specific classname that implements the DataSource and/or XADataSource APIs

Resource Type:
Must be specified if the datasource class implements more than 1 of the interface.

Description:

Pool Settings

Initial and Minimum Pool Size: Connections
Minimum and initial number of connections maintained in the pool

Maximum Pool Size: Connections
Maximum number of connections that can be created to satisfy client requests

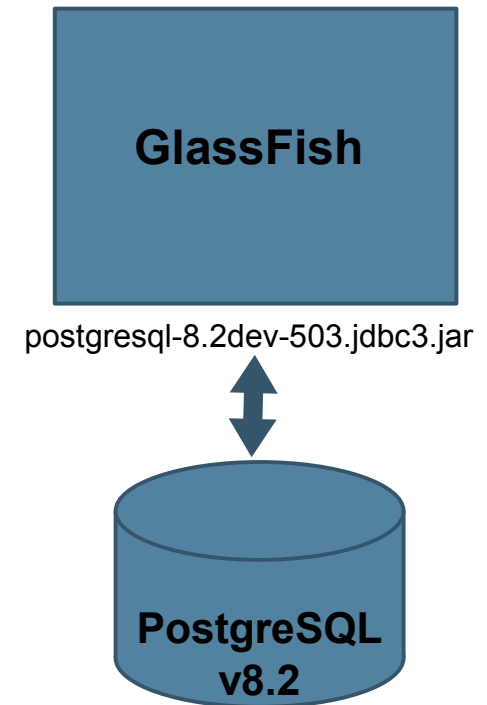
Pool Resize Quantity: Connections
Number of connections to be removed when pool idle timeout expires

Idle Timeout: Seconds
Maximum time that connection can remain idle in the pool

Max Wait Time: Milliseconds
Amount of time caller waits before connection timeout is sent

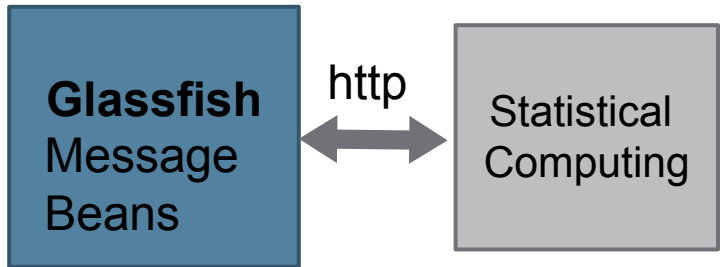
Connection Validation

Connection Validation: Required





Configuring GlassFish: JMS



Destination Resources (2)

JNDI Name	Enabled	Resource
<input type="checkbox"/> jms/IndexMessage	true	javax.jms.Q
<input type="checkbox"/> jms/DSBIngest	true	javax.jms.Queue

Resources > JMS Resources > Connection Factory

Edit JMS Connection Factory

Editing a Java Message Service (JMS) connector resource.

General Settings

JNDI Name: jms/DSBQueueConnectionFactory
Pool Name: jms/DSBQueueConnectionFactory
Type: javax.jms.QueueConnectionFactory
Description:
Status: Enabled

Pool Settings

Initial and Minimum Pool Size: Connections
Minimum and initial number of connections maintained in the pool

Maximum Pool Size: Connections
Maximum number of connections that can be created to satisfy client requests

Pool Resize Quantity: Connections
Number of connections to be removed when pool idle timeout expires

Idle Timeout: Seconds
Maximum time that connection can remain idle in the pool

Max Wait Time: Milliseconds
Amount of time caller waits before connection timeout is sent

Connection Factories (2)

JNDI Name
<input type="checkbox"/> jms/DSBQueueConnectionFactory
<input type="checkbox"/> jms/IndexMessageFactory



Configuring GlassFish: Mail Sessions

Sun Java™ System Application Server Admin Console

Resources > JavaMail Sessions > mail/notifyMailSession

Edit JavaMail Session

A JavaMail session resource represents a mail session in the JavaMail API.

General Settings

JNDI Name: mail/notifyMailSession

Mail Host:
DNS name of the default mail server

Default User:
User name to provide when connecting to a mail server; must contain only alphanumeric, underscore, dash, or dot characters

Default Return Address:
E-mail address of the default user

Description:
Makes it easier to find this session later

Status: Enabled

Advanced

Store Protocol:
Either IMAP or POP3; default is IMAP

Store Protocol Class:
Default is com.sun.mail.imap.IMAPStore

Transport Protocol:
Default is SMTP

Transport Protocol Class:
Default is com.sun.mail.smtp.SMTPTransport

Debug: Enabled

Additional Properties (0)

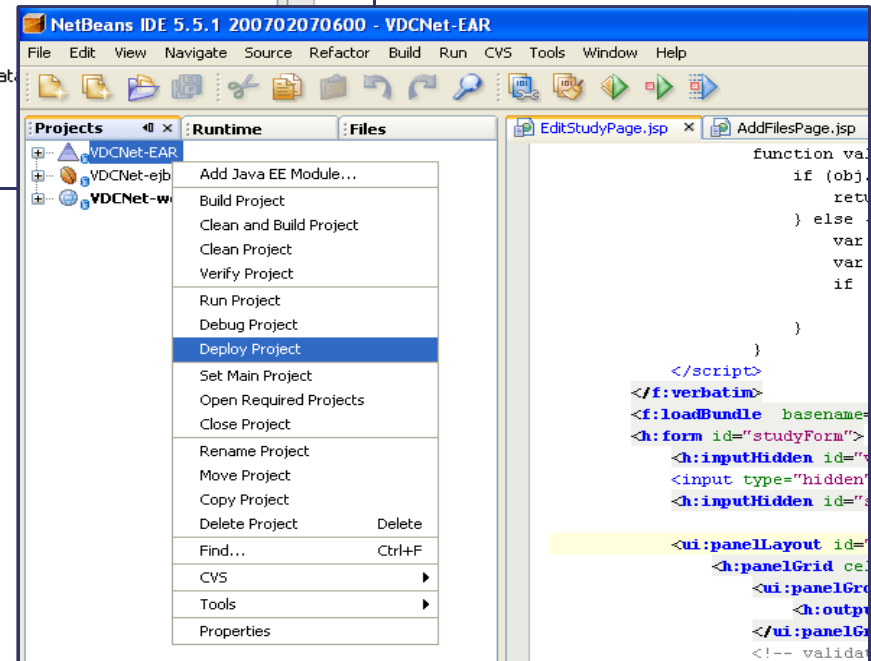
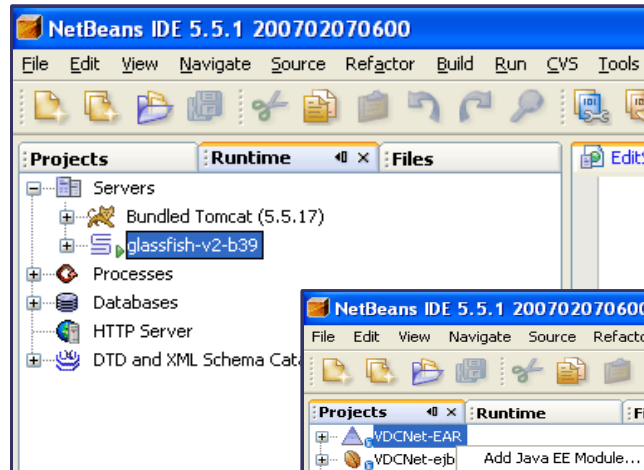
Name	Value
No items found.	

Setting E-mail notifications to users



Developing and Deploying our Application

- We use NetBeans 5.5.1 as our development environment.
- In Development, we deploy the EAR file into GlassFish through NetBeans.
- In Production, for deployment we use ANT scripts generated by NetBeans.





Our Production (Beta)

- The IQSS Dataverse Network is hosted at Harvard.
- OS production: Linux
- GlassFish Version: v2-b41
- Thousands of users once it's in full production.
- Any researcher, department or center can create their own “dataverse”.

The screenshot shows the IQSS Dataverse Network website. The header includes the logo for The Institute for Quantitative Social Science and the text "IQSS Dataverse Network A social science research data archive". Below the header is a navigation menu with links for Home, About, Help, Site Map, Contact Us, and Log in. The main content area is divided into two sections: "Search All Dataverses" and "Browse Dataverses". The "Search All Dataverses" section has a search bar with a dropdown menu set to "Cataloging Information" and a "Search" button. The "Browse Dataverses" section lists several dataverses, including Ben Lewis, Center for Survey Research (UVA), Dale Jorgenson, Dan Koretz, Gary King, International Studies Quarterly, Jameel Poverty Action Lab, Murray Research Archive (highlighted), and Rosalind Chait Barnett. A call-to-action box on the right side of the page, titled "Create Your Own Dataverse", is circled in red. The text in this box reads: "Are you interested in having your on-line archive? Send a request to [Create your own Dataverse](#). Or find out more about [how to create and use a dataverse](#) before sending a request."



Fully Custom "Dataverses"

A dataverse is an on-line virtual archive for research data

Journals

Researchers

Archives

INTERNATIONAL STUDIES QUARTERLY
2003-2008

CONTACT INFORMATION
UNT DEPARTMENT OF POLITICAL SCIENCE
125 WOOTEN HALL PO BOX 305340
DENTON, TX 76203-5340
VOICE: 940.565.2801
FAX: 940.369.7768

International Studies Quar

Home | About | Help | Site

Search International Stud

Advanced Search | Search Help

Search: Cataloging Informa

Browse

- ISQ Journal
 - Volume 49, 2005
 - Issue 1
 - Issue 2
 - Issue 3
 - Issue 4
 - Volume 50, 2006
 - Volume 51, 2007

GARY KING

Bio & C.V.
Writings
Software
Data
Research Group
Class Materials
Links
Contact

Enter search text

This Site
 Harvard University
 Google Scholar
 The Web

Google Search

Gary King Dataverse

Home | About | Help

Search Gary King D

Advanced Search | Search

Search: Cataloging I

Browse

- Gary King Data
 - 10 Million In
 - Cause of De
 - Elections to
 - King

Henry A. Murray
Research Archive

Murray Research Archive Dataverse | IQSS Dataverse Network

powered by the **DATVERSE NETWORK PROJECT**

Home | About | Help | Site Map | Contact Us | Log in

Search Murray Research Archive Dataverse

Advanced Search | Search Help

Search: Cataloging Information For: Search

Browse

- All Murray Research Archive Datasets
 - 1. Diversity: Race, Ethnicity, Sexual Orientation, Religion
 - 2. Group Behavior
 - 3. Health
 - 4. Education
 - 5. Family, Marriage, Women

Become a Contributor

Are you interested in uploading your data to **Murray Research Archive** Dataverse? Send a request to **Become a Contributor**. Or find out more about being a contributor before sending a request.

Most Recent

- Controversial Facilities in Japan.

Dataverse Functionality

Persistent data citation

Download data files and documentation

Adolescent Health Care Evaluation Study, 1984-1991

Cataloging Information Study Files

Citation Information

How to Cite Felton J. Earls, 1992, "Adolescent Health Care Evaluation Study, 1984-1991", hdl:1902.1/00915
<http://id.theData.org/hdl%3A1902.1%2F00915> UNF:3:C1ofxgde+AHG|BOyZvZQ== Murray Research Archive [Distributor]

Study Global Id hdl:1902.1/00915

Other ID 00915

Authors Felton J. Earls

Distributor Murray Research Archive **MRA**

Adolescent Health Care Evaluation Study, 1984-1991

00915Earls-Adolescent-Data-Waves1-4.tab

Download Subset Recode Descriptive Statistics Advanced Statistical Analysis

Selected Variables: ABUSE, ACHV4, ABUSSX4

Choose Descriptive Statistics output to apply to selected variables:

Univariate Numeric Summaries

Univariate Graphic Summaries

Select variables from table below (selected variables will be displayed above)

Type	Variable ID	Variable Name	Variable Label	Quick Summary
<input type="checkbox"/>	D	257533	ABSNT	DAYS OF SCHOOL MISSED
<input type="checkbox"/>	D	259242	ABSNT2	NUMBER OF ABSENCES
<input checked="" type="checkbox"/>	D	253763	ABUSE	EVER LOST CONTROL WHEN SPANKED/HIT BABY
<input type="checkbox"/>	D	256946	ABUSS22	ALCOHOL DISRUPTIVE FAMILY/SELF/COMMUNITY
<input type="checkbox"/>	D	256643	ABUSS44	[label missing]
<input type="checkbox"/>	D	259570	ABUSSX2	INDICATORS OF DRINKING PROBLEM

Adolescent Health Care Evaluation Study, 1984-1991

Cataloging Information Study Files

Download all files in a single archive file (files that you cannot access will not be downloaded):

- 1. Documentation**
 - 00915Earls-Adolescent-Codebook.pdf Description of coded data variables application/pdf
 - 00915Earls-Adolescent-Documentation.pdf Overview: abstract, research methodology, publications, and other info. application/pdf
 - 00915Earls-Adolescent-Measures.pdf Collection of Blank Measures Used in Study application/pdf
- 2. Adolescent Data**
 - 00915Earls-Adolescent-Data-Waves1-4.por Data files waves 1-4 in SPSS Portable Format
 - 00915Earls-Adolescent-Data-Waves1-4.tab Data files waves 1-4 in Tab Delimited Format text/tab-separated-values cases: 2788 variables: 3908 citation
- 3. HIV Subsample Data**
 - 00915Earls-Adolescent-Data-HIVFollowup.por Follow-up of HIV Subsample in SPSS Portable Format
 - 00915Earls-Adolescent-Data-HIVFollowup.tab Follow-up of HIV Subsample in Tab Delimited Format text/tab-separated-values cases: 602 variables: 2240 citation
- 4. Supplementary Documentation**
 - 00915Earls-Adolescent-CodebookAddendum.pdf Clarifications of discrepancies in the data files application/pdf
 - 00915Earls-Adolescent-DataFileList.pdf Detailed description of computer data files application/pdf
- 5. Detailed Usage Terms**
 - 00915Earls-Adolescent-MemoOfAgreement.pdf Legal agreement between data depositor and Murray Archive application/pdf

Data Analysis

Admin Functionality

Add Studies, Upload Files, Create collections, custom settings (edit banner, homepage), permissions, etc

Cataloging Information
Study Files

* Required Fields
 * Recommended Fields
 A light blue background in a form field indicates html is permitted.

A light orange form indicates that a Date format is required. Please enter YYYY or YYYY-MM or YYYY-MM-DD.

Add a new row (e.g., when add multiple authors).
 Remove an existing row.

Citation Information

Title *

Study ID *

Author (FirstName LastName) *

Producer *

Abbreviation

URL (Enter full url, e.g., http://...)

Logo URL (Enter full url for image, e.g., http://...)

Production Date * (Enter date as YYYY or YYYY-MM or Y

Distributor *

Abbreviation

URL (Enter full url, e.g., http://...)

Logo URL (Enter full url for image, e.g., http://...)

Distribution Date * (Enter date as YYYY or YYYY-MM or Y

Deposit Date * (Enter date as YYYY or YYYY-MM or Y

Replication For *

Abstract and Scope

Abstract *

Collection by Assigning Studies

Enter collection name: Choose a parent:

Assign Studies to Collection:

1) Here you can define a collection by selecting studies and assign them directly to the collection. First, select studies from an existing collection or search for studies, and then add studies to the collection.

1) Choose studies from an existing collection:

2) or choose from search results:

Studies to Choose from:

- Child Rearing Antecedents of Hypnotic Susceptibility, 1963-1964 (Log# 00570)
- Follow-Up of the Children of the Patterns of Child Rearing Subjects, 1977-1978 (Log# 00046)
- Harvard Bereavement Study, 1965-1966 (Log# 00636)
- Harvard Sexual Harassment Survey, 1983 (Log# 00686)
- Informal Barriers to Women Entering Engineering, 1980 (Log# 00611)
- Intergenerational Studies, 1932-1982 (Log# 00627)
- Intergenerational Study of Puerto Rican Families in New York City, 1976-1978 (Log# 01085)
- Japanese Competitive Success: A Study in the Motivation of Japanese Women, 1984 (Log# 00701)
- Life Patterns, Personality Style and Self-Esteem in Gifted Family-Oriented and Career-Committed Women, 1969-1970 (Log# 00001)
- Life Patterns Survey, 1980 (Log# 00571)

Studies Selected:

- Baltimore Longitudinal Study of Attachment, 1963-1967 (Log# 00967)
- Early Years of Marriage Study, 1986-1989 (Log# 01018)
- High School and Beyond (Student Data Set) (Log# 00654)

Upload Files

Adding Files to: A Test Study

? You may upload multiple files to this page (by browsing each file individually) and then save all of them at once. If you upload a STATA (.dta) or SPSS (.sav or .por) file, it will be processed as a subsetting data file.

Original File Name	Category	Documentation	File Name	Description	Delete?
TestDocument.bt	<input checked="" type="checkbox"/>	Documentation	<input type="text" value="TestDocument.bt"/>	<input type="text" value="Here goes the description"/>	<input type="checkbox"/>
AnotherTestDocument.bt	<input checked="" type="checkbox"/>	Documentation	<input type="text" value="AnotherTestDocument.bt"/>	<input type="text" value="Here goes the description"/>	<input type="checkbox"/>



For More Information

- This Friday at 12:10!
 - TS 4656: Harvard's Dataverse Network: A JSF/EJB 3.0 Technology Data Sharing Solution on Java EE 5
- IQSS Dataverse Network at:
 - <http://dvn.iq.harvard.edu/dvn/>
- Dataverse Network Project Site:
 - <http://thedata.org/>
- Gary King, "An Introduction to the Dataverse Network as an Infrastructure for Data Sharing":
 - <http://gking.harvard.edu/files/dvn.pdf>



DEMO

IQSS Dataverse Network



GlassFish in Real Life: Peerflix.com

Cyril Bouteille

CTO

Peerflix, Inc.

<http://www.peerflix.com>





Peerflix: the DVD Trading Community

Why rent when you can own?

- Created a vibrant community around movies to:
 - Discover DVDs
 - Connect/converse with other members
 - Trade the DVDs you have for ones you want
- Offering Peer-to-Peer DVD trading service

1 Join for FREE



2 Make 2 lists



- Add DVDs you WANT.
- Add DVDs you HAVE to sell.

3 Trade DVDs



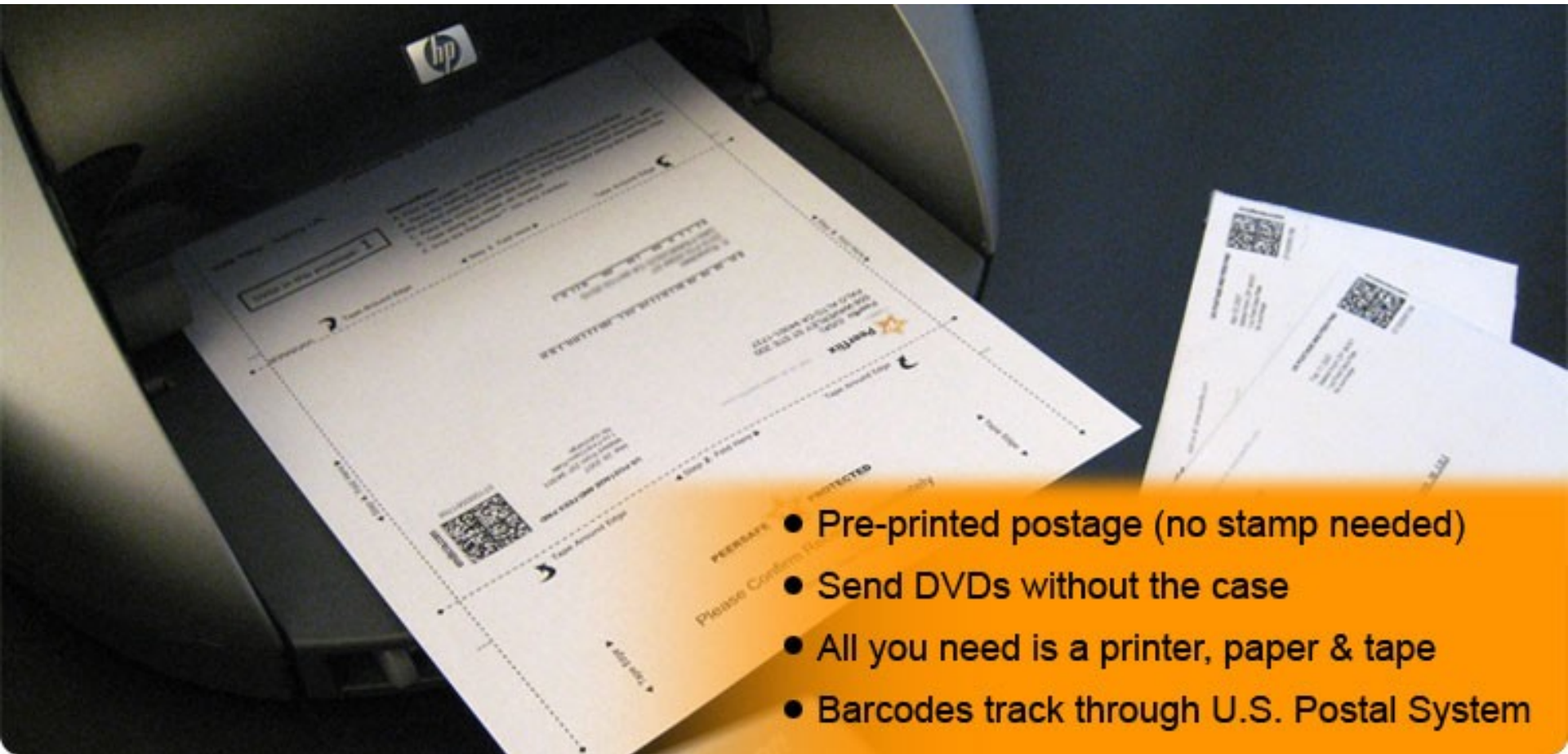
- Mail DVDs to members
- Receive DVDs from members
- Keep or trade what you get

Easy DVD mailing System

[Try it FREE](#)



How does the Peermailer work?



- Pre-printed postage (no stamp needed)
- Send DVDs without the case
- All you need is a printer, paper & tape
- Barcodes track through U.S. Postal System



Early-stages of Peerflix

- Peerflix started in 2004 with an ASP.NET web site
- Growth to 300k members led to scalability issues:
 - Complexity => longer TTM for features
 - Traffic => reduced availability @ peak times
- In 2006, a new platform was needed:
 - Extensibility to add features + expand in new markets
 - Horizontal scalability to support traffic growth
 - Low cost of ownership and operation
 - Evolution vs. Revolution?



Growth through a next-generation Enterprise Java platform

Not Invented Here

- Complete re-architecture of the web site using Java EE & open-source technologies:
 - Software redesign with JSP/JSF, EJB3 & JDO2
 - Glassfish V1 UR1 / SJSAS 9.0.1 PE
 - Solaris 10 on AMD-based X Fire servers
 - Kodo Java Data Objects on MySQL 5 Database
- Peerflix V2 launched on December 18th, 2006
 - A 6-month project with a team of 8 engineers
 - PR brought 360% increase in traffic volume
 - New platform was stable with no unplanned downtime



Why Glassfish?

Why open-source?

- No licensing costs for development and production use
- Affordable production support options
 - Integrated from server to JVM and Operating System
- Ahead in Java EE 5 compliance
- Strong vibrant community with active forums
- Low-maintenance w/ easy to use admin tools
- Clean and coordinated server architecture



DEMO

<http://www.peerflix.com>



GlassFish in real life

Deployment Stories

<http://blogs.sun.com/stories>