



# Practical GlassFish

**Alexis Moussine-Pouchkine**

GlassFish Team

Sun Microsystems

# glassfish.org



GlassFish » Community

**GlassFish Community**

- Downloads
- Announcements
- Mailing lists
- Discussion forums
- + Using GlassFish
- + Samples
- + Developing GlassFish
- Issue tracker
- Go to Issue #
- 日本語
- 简体中文
- + Other Languages
- Migration to GF**
- GlassFish v3
- Samples
- Grizzly



[Start](#)



[Download](#)



[Communicate](#)



[Contribute](#)

The GlassFish community is building free, open source, production-quality, enterprise software.

Announcing the [Community Awards Program](#) to Encourage and Recognize Innovation.

Download **GlassFish** NOW v2 ur1

Download **TopLink** NOW Essentials

Download **OpenMQ** NOW v4.1

Download **GlassFish** NOW v2.1 Builds

Download **GlassFish** NOW v3 Preview

**Commercial Support**  
Now Worldwide!

# wiki.glassfish.java.net

[Aquarium](#)
[Core](#)
[Webtier](#)
[WSXML](#)
[Tools](#)


**Glassfish Wiki » GlassFishWiki**

Your trail: [GlassFishDay2008Sydney](#)

## Glassfish Wiki

[GlassFish Wiki](#)
[GlassFish Day 07](#)
[About this Wiki](#)
[Using GlassFish](#)
[GlassFish User FAQ](#)
[Schedule for Milestones](#)
[GlassFish V2.1](#)
[GlassFish V2 UR1](#)
[GlassFish V2](#)
[GlassFish V3](#)
[GlassFish V1 UR1](#)
[Communication Server](#)
[Adoption](#)
[Product Comparisons](#)
[Commercial Products](#)
[Support](#)
[Training and Certification](#)
[Events](#)
[Technology Areas](#)
[GlassFish Extras Catalog](#)
[Screencasts](#)
[Tips and Blogs](#)
[General](#)
[Getting Started](#)
[Governance](#)
[Wiki Editors](#)

## Welcome to the Community Wiki for Project GlassFish!

[Project GlassFish](#) is an open source community comprising of Users, Developers, Partners, and Evangelists creating an industry leading Java EE 5 compatible enterprise-quality Application Server (see [Principles of Project GlassFish](#)). In the common Open Source tradition, we encourage pluggability and reuse across many other communities and projects

The GlassFish Wiki is a valuable informational resource addressing the requirements of this broad community. The wiki is open for reading to all. Contributors to existing or new wiki topics need to have a registered user id.

Content in the wiki includes information for:

- [Developers Using GlassFish](#)
- [Developers Improving GlassFish](#)
- [General Interest](#)

## General Information

### RoadMaps - Upcoming releases

- [Plan for GlassFish v1 UR1](#) - the update to GlassFish v1 release
- [GlassFishV1UR1](#) - New page
- [Plan for GlassFish v2](#) - Upcoming release of GlassFish with clustering features
- [Plan for GlassFish v2UR](#) - Upcoming update release of GlassFish v2

## Community News

### [The Aquarium](#)

[Using SSL with GlassFish GlassFish v2 production story - Karlow Vary International Airport GlassFish on alternate Mac VM Grizzly Comet and IceFaces driving your presentation slides](#)

## Announcements

[Project RSS Feed for Project](#)

# blogs.sun.com/theaquarium

## The Aquarium

A blog that has nothing to do with fish ...  
... but everything to do with Open Source Java EE, XML, SOA and more ...

Download Now  
GlassFish v2 **FINAL**

Commercial Support  
Now Worldwide!

[Main](#) | [Next page](#) »

MAR 08  
4

### New GeoMap for GlassFish - February 08

Posted by [pelegri](#) in [GlassFish](#)



The Feb '08 data has been added into our GF Admin Console [GeoMap](#):

- 303,673 - Pings in Feb '08
- 2,184,074 - Total cumulative pings (Since Feb '07)
- 36,394 - Unique IPs in Feb '08
- 287,098 - Total Unique IPs (Since Feb '07)

We also have the download numbers and they are our best so far; even better than [Last Month](#). I'm composing a longer note with more details that I'll push in a few days; stay tuned.

**TAGS:** [adoption](#) [geomap](#) [glassfish](#) [mashup](#)



MAR 08  
4

### GlassFish and PHP5 (Quercus) on OpenSUSE

Posted by [pelegri](#) in [Web.Next](#)



New blogger! [Siegfried Bolz](#) is working on his Diplom-Informatiker in Computer Science in Munich and joined the blogosphere with a nice set of notes.

His first entry shows how to run [GlassFish v2 with Quercus](#) (i.e. PHP5) on OpenSUSE 10.1. Given the earlier news on [Frank](#) and

#### LANGUAGES

[english](#) [简体中文](#) [español](#) [日本語](#) [русский](#)

#### NEWS AND EVENTS

##### Connect and Participate

Try GlassFish for a chance to win an iPhone!

» [Participate Now](#)

#### SEARCH

#### POPULAR TAGS

[adoption](#) [ajax](#)  
[clustering](#) [community](#)  
[fastinfoset](#) [frontpage](#)  
[glassfish](#)  
[glassfishday](#) [grizzly](#)  
[hudson](#) [japex](#) [java](#) [javaee](#)  
[javaone](#) [jax-rs](#) [jax-ws](#)  
[jaxb](#) [jboss](#) [jcp](#) [jersey](#)  
[jmaki](#) [jruby](#) [jsf](#) [jsp](#)  
[maven](#) [metro](#)  
[netbeans](#) [opens](#)  
[opensource](#) [odensso](#)

#### DOWNLOADS



#### EVENTS



# Installers

- “jar” GlassFish installer from glassfish.org (java.net)
  - > `java -jar glassfish*.jar`
  - > `ant -f setup.xml`
  - > *developer and cluster profiles*
- Community-contributed IzPack Installer
  - > Same as above with graphical UI, single archive for multiple platforms, does install, config, startup, and shows admin page
  - > <http://izpack.org/showcase-glassfish-v2/>

# Installers (cont.)

- SJS Application Server installers
  - > Native Package-based (linux and Solaris). Need “root” privileges
  - > File-based (with HADB and JDK, or without)
  - > *IFR (Java ES)*
  - > All of the above add support for *enterprise* profile (HADB)
- Linux distros
  - > Debian
  - > Ubuntu multiverse
  - > more in the works, help welcome

# Which profile do I use?

- GlassFish bits
  - > `setup-cluster.xml`
  - > `setup.xml`

- SJS AS bits
  - > Set in `AS_ADMIN_PROFILE` in `config/asadminenv.conf`

	Developer	Cluster	Enterprise
Security KeyStore	JKS	JKS	NSS
Security Manager	Disabled	Disabled	Enabled
JVM™ software	Client	Client	JDK™
HTTP access log	Disabled	Disabled	Enabled
GMS Heartbeat	Disabled	Enabled	Enabled
Cluster creation	Not Allowed	Allowed	Allowed
Session Repl.	Not Allowed	Allowed	Allowed

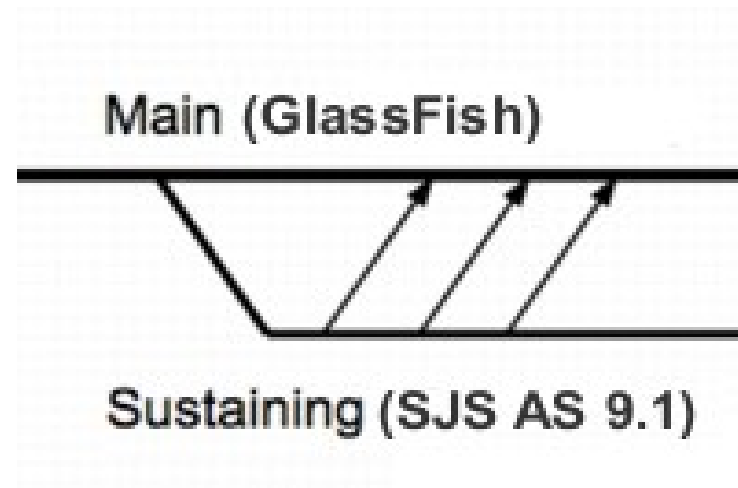
- “developer” profile **can** be used in production
- Can upgrade from Developer to Cluster
- Further details:
  - > <http://docs.sun.com/app/docs/doc/819-3671/gelvk>
  - > Example: jms-service is EMBEDDED, LOCAL, or REMOTE

# Releases

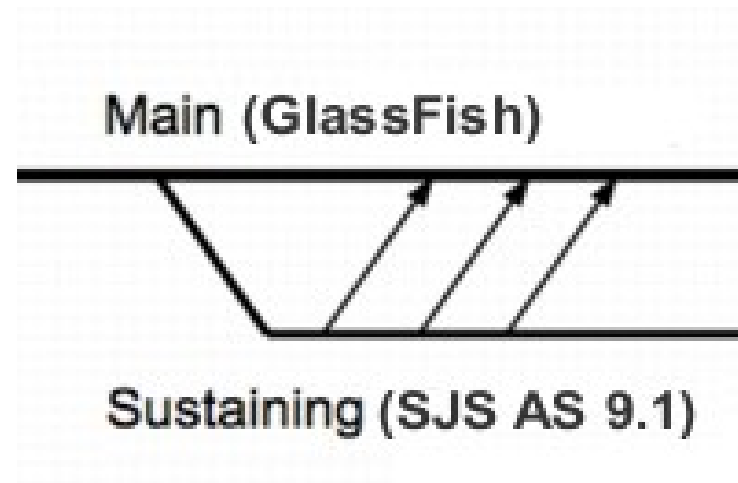
- Major release
  - > GlassFish v2 == SJS AS 9.1 (Sept. '07)
- Dot release
  - > GlassFish v2.1 == SJS AS 9.1.1 (June '08)
- Update Release
  - > GlassFish v2ur1 == SJS AS 9.1ur1 (Dec '07)
- Patch releases
  - > Potentially every 6 weeks
  - > For supported customers only



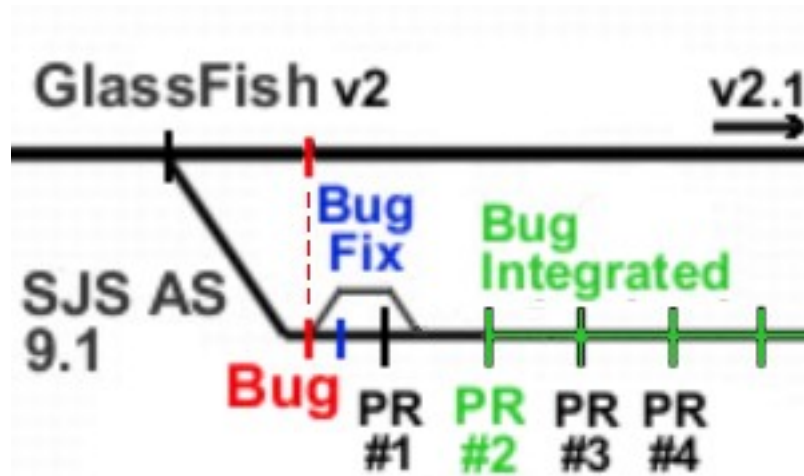
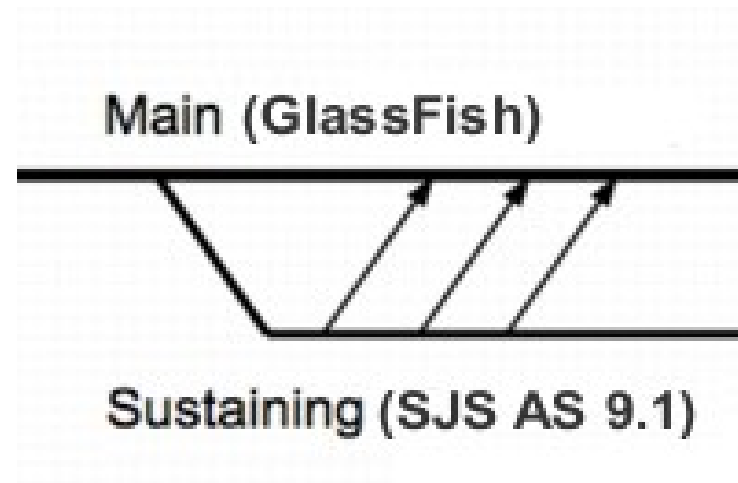
# Sustaining branch (patches)



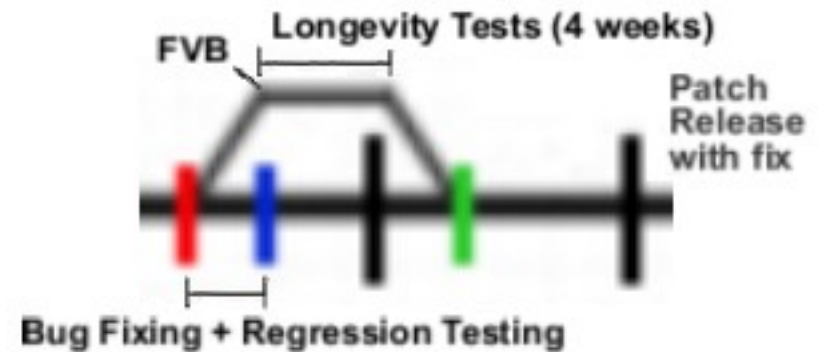
# Sustaining branch (patches)



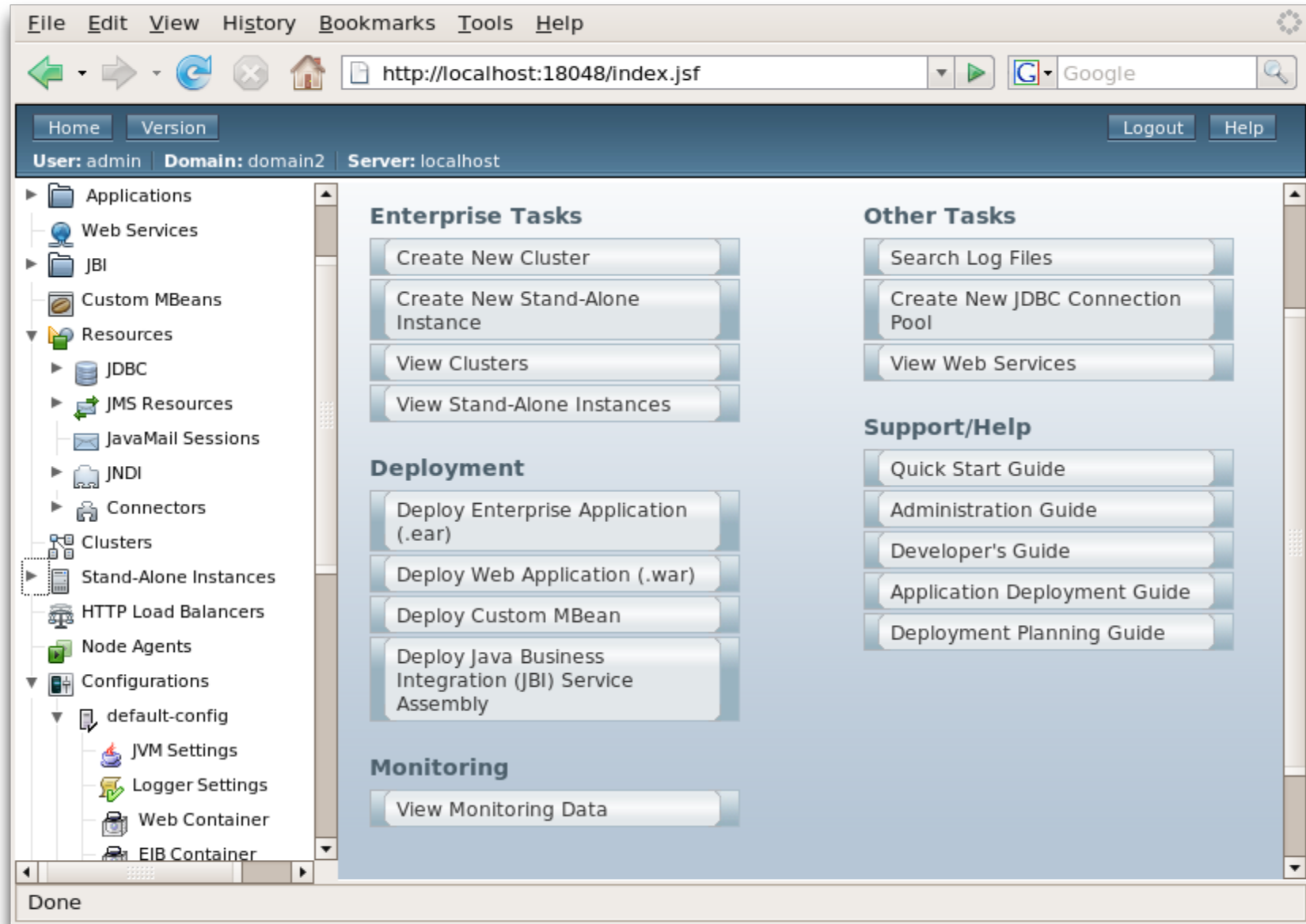
# Sustaining branch (patches)



PR : Patch Release via SunSolve

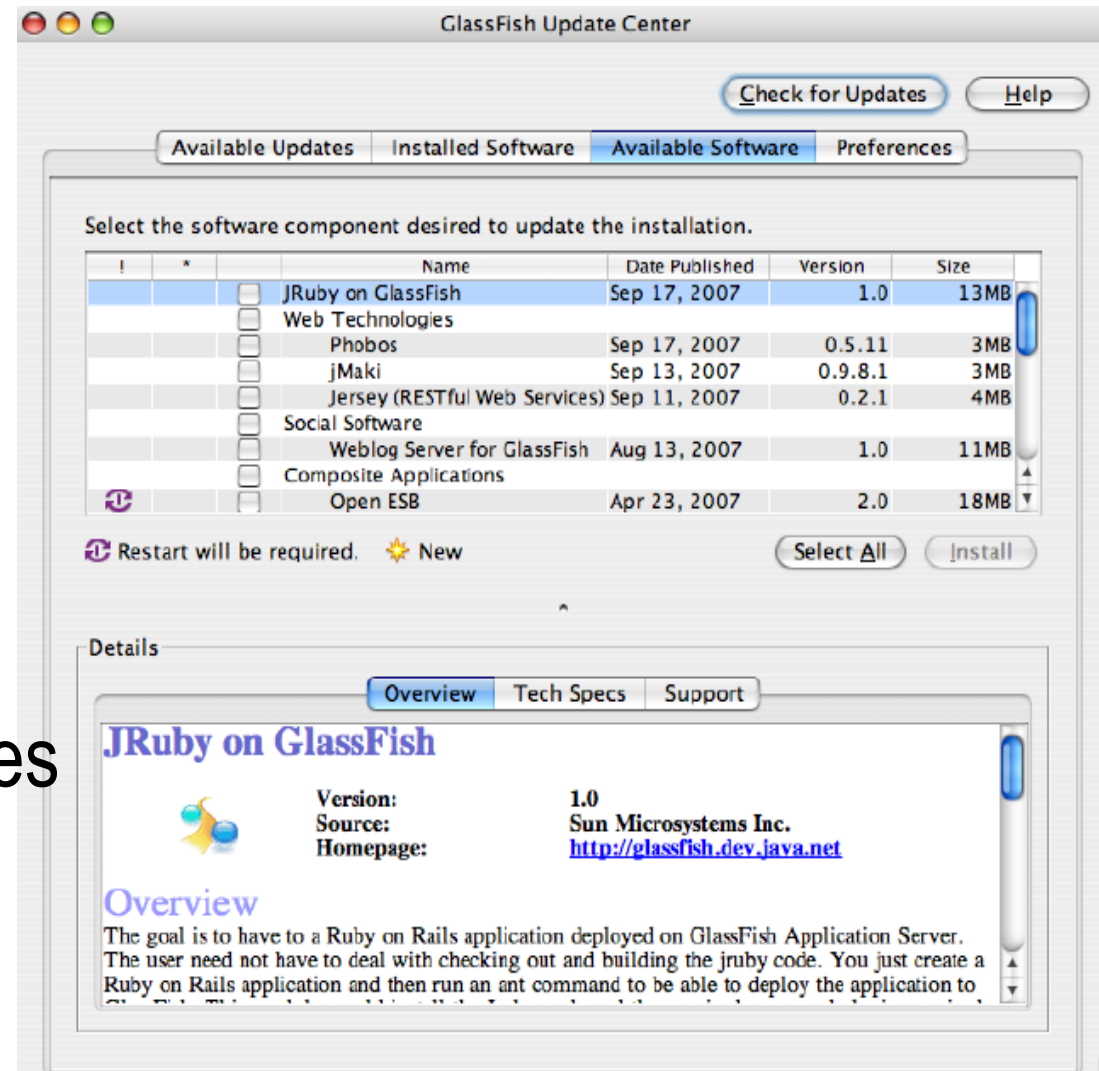


# Web Admin Console



# GlassFish Update Center

- JRuby On Rails
- Jersey
- jMaki
- Open ESB
- Roller
- OpenSSO
- Portal
- Java EE tutorial & samples
- ...
- *your own extension*



GLASSFISH\_INSTALL/updatecenter/bin/updatetool  
<http://updatecenter.dev.java.net>

# Useful `asadmin` commands

`list-domains`

`undeploy`

`list-*`

`backup-domain`

`create-domain`

`restore-domain`

`start-domain`

`list-backups`

`stop-domain`

`generate-diagnostic-report`

`deploy`

`generate-jvm-report`

`deploydir`

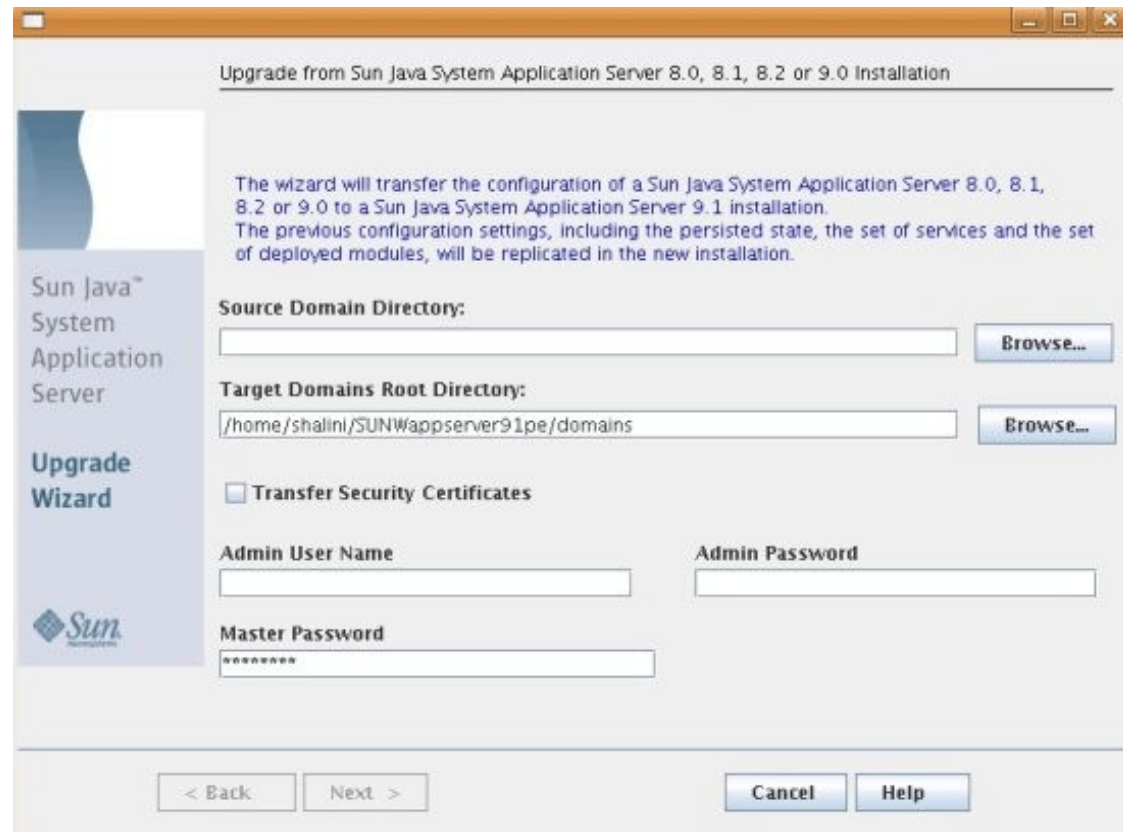
`get/set`

- > All available in: interactive, batch, multimode
- > Closest command
- > Can configure auto-complete\*

\*: [http://blogs.sun.com/harsha/entry/command\\_line\\_completion\\_in\\_glassfish](http://blogs.sun.com/harsha/entry/command_line_completion_in_glassfish)

# asupgrade

- Upgrade a domain's applications, resources, and configuration
- Option #1: Side-by-Side Upgrade
- Option #2: In-place Upgrade



Upgrade from Sun Java System Application Server 8.0, 8.1, 8.2 or 9.0 Installation

The wizard will transfer the configuration of a Sun Java System Application Server 8.0, 8.1, 8.2 or 9.0 to a Sun Java System Application Server 9.1 installation. The previous configuration settings, including the persisted state, the set of services and the set of deployed modules, will be replicated in the new installation.

**Source Domain Directory:**

**Target Domains Root Directory:**

Transfer Security Certificates

**Admin User Name**

**Admin Password**

**Master Password**

< Back    Next >    Cancel    Help

# Generate Diagnostic Report

Generate Report

Confidential data appears in the generated report as listed in the Confidential Properties table. To mask properties, use the `create-password-alias` and `set` commands.

Generate Report For:

- Entire domain
- Cluster
- Instance
- Node Agent

Description:

Bug IDs:

Comma separated

Server Log Start Date:  

mm/dd/yyyy

Server Log End Date:  

mm/dd/yyyy

## Confidential Properties (3)

### Confidential Properties

domain/configs/config=server-config/jms-service/jms-host=default_JMS_host/admin-password="admin"
domain/configs/config=default-config/jms-service/jms-host=default_JMS_host/admin-password="admin"
domain/configs/config=LocalCluster-config/jms-service/jms-host=default_JMS_host/admin-password="admin"

Generate Report



# Migrate to GlassFish

- AVK (Application Verif. Kit)
  - > Tests for Java EE portability (Java EE 5 or J2EE 1.4)
  - > Does static, dynamic and packaging verifications
  - > Available as ANT tasks
  - > GlassFish-agnostic
  - > <http://java.sun.com/j2ee/avk/>
- Migration tool
  - > Picks up where AVK left off
  - > Open Source tool at <http://migrate2glassfish.dev.java.net>
  - > Automate migration from Tomcat, JBoss, WebSphere, WebLogic, and previous versions of Sun App Server
  - > GlassFish-specific



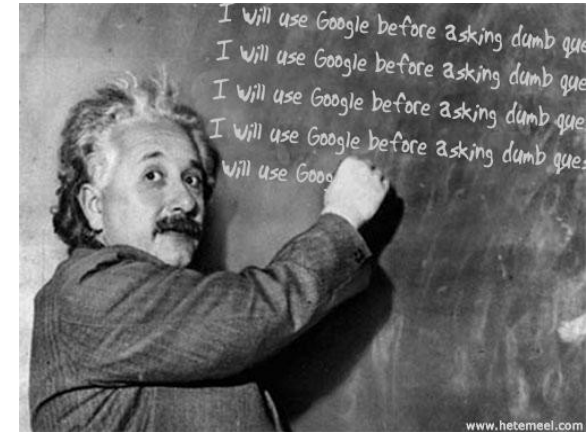
# Documentation

- Online contextual help in Web Console
- **asadmin --help**
- Latest stable documentation
  - > <http://docs.sun.com/app/docs/coll/1343.4>
  - > Title “Sun Java System AS” but equally applies to GlassFish
- Documentation drafts
  - > <https://glassfish.dev.java.net/javaee5/docs/DocsIndex.html>
- The Java EE 5 Tutorial
  - > <http://java.sun.com/javaee/5/docs/tutorial/doc/index.html>



# Where to ask questions?

- User Forum or Mailing List (cross-posted)
  - > Anything technical
  - > [USERS@glassfish.dev.java.net](mailto:USERS@glassfish.dev.java.net)
  - > <http://forums.java.net/jive/forum.jspa?forumID=56>
- [theaquarium@sun.com](mailto:theaquarium@sun.com)
  - > Anything makerting/partner/community-related (private)
- [advocacy@glassfish.dev.java.net](mailto:advocacy@glassfish.dev.java.net)
  - > Anything makerting/partner/community-related (public)
- Your own community/network
  - > [developpez.com](http://developpez.com) has a French-speaking active GlassFish forum
  - > (other...)



# Where to file bugs



- We love bug reports! Seriously!
  - > We like patches too...
  - > We reward both. See <http://glassfish.org/GAP>
- java.net Issue Tracker
  - > <https://glassfish.dev.java.net/servlets/ProjectIssues>
  - > Please specify Bug (Defect) or RFE (Enhancement)
  - > The better the report, the more chances of getting a fix
  - > Feel free to discuss in public (issue tracker or mailing list)
- Using your Sun support contract
  - > Only way to escalate a problem



# Questions ?

[alexis.mp@sun.com](mailto:alexis.mp@sun.com)  
<http://blogs.sun.com/alexismp>