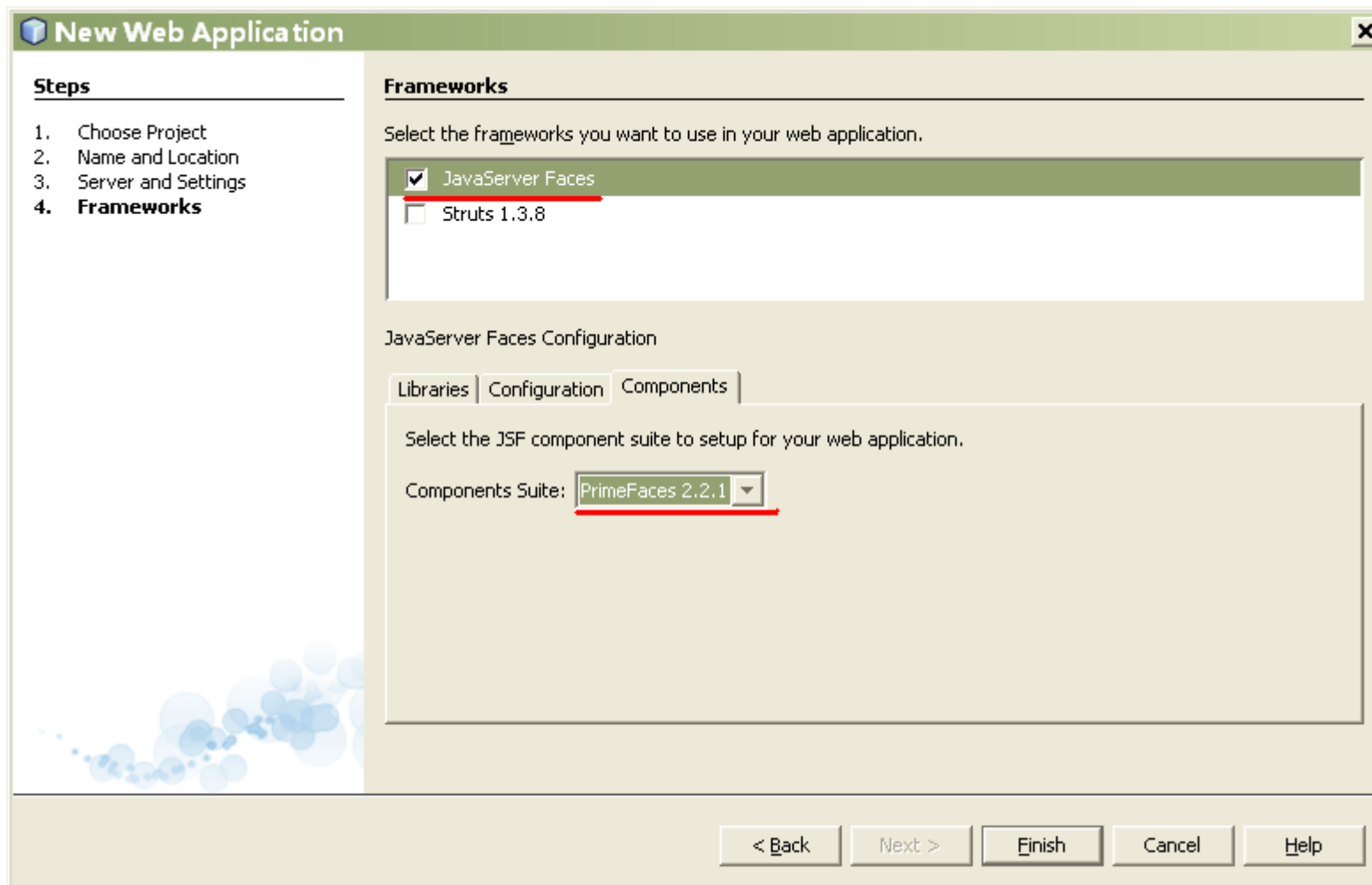


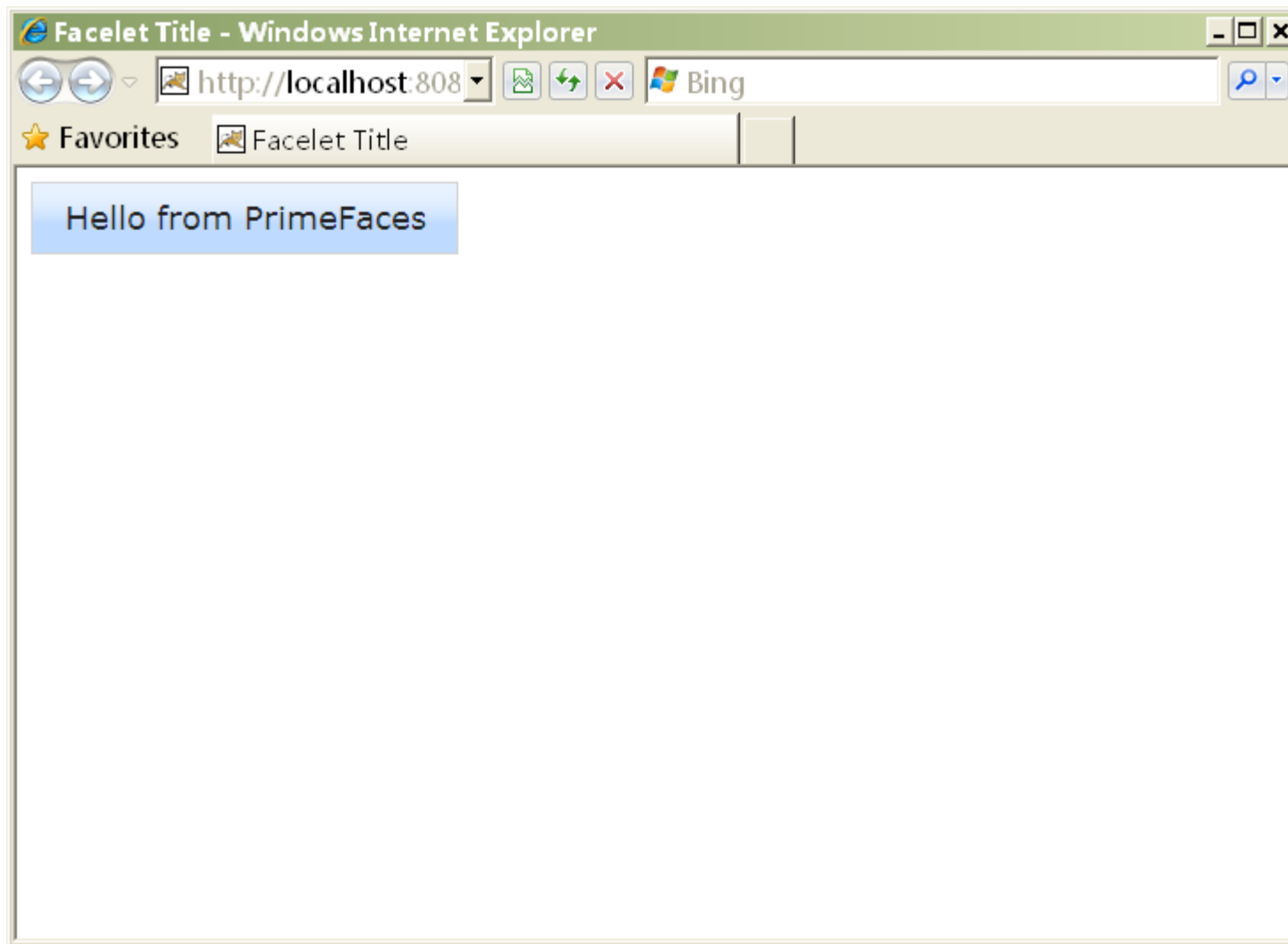
First, this is my os, jdk and netbeans version:



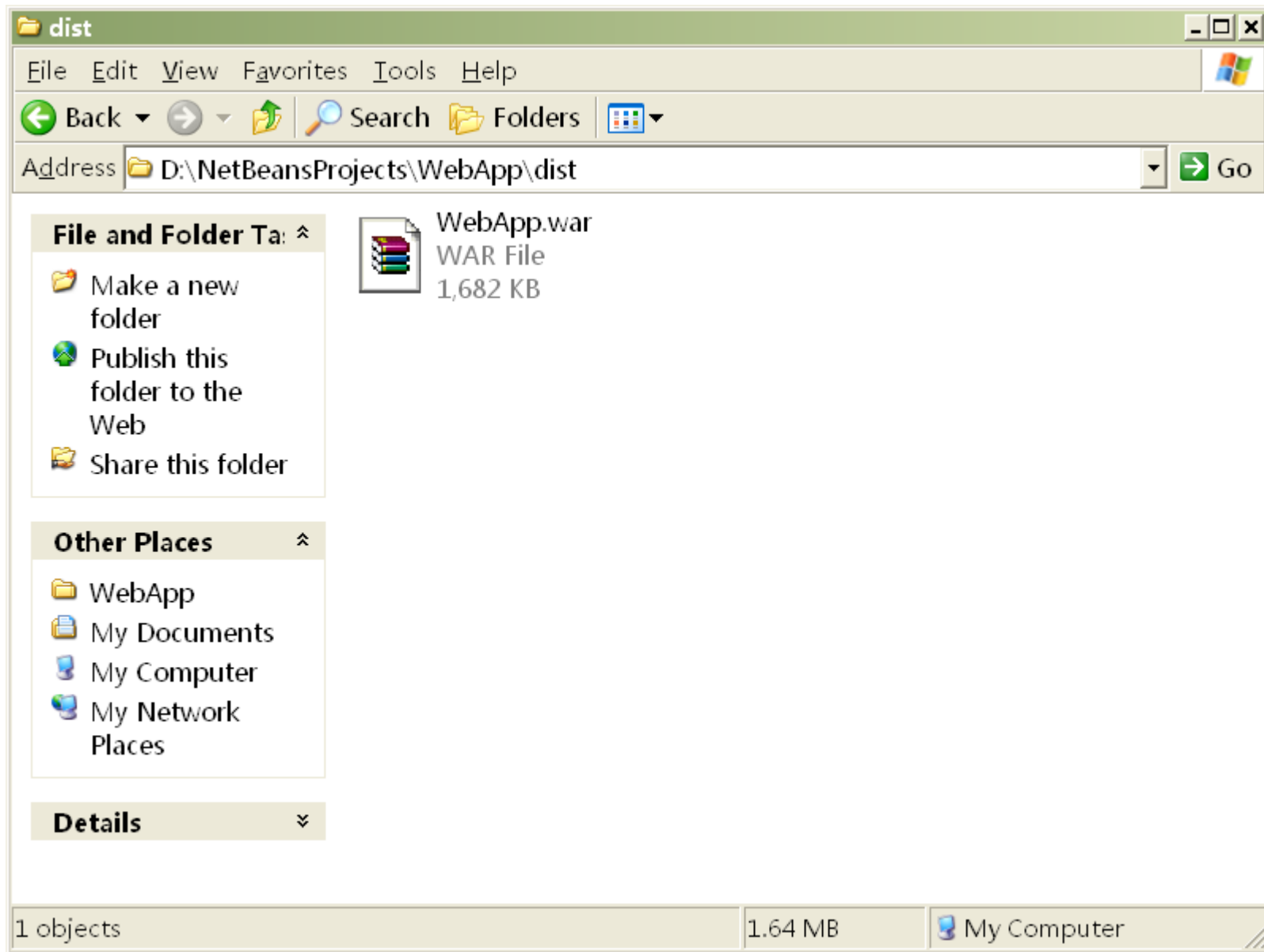
Create a java web project. A very simple project, only one index.xhtml



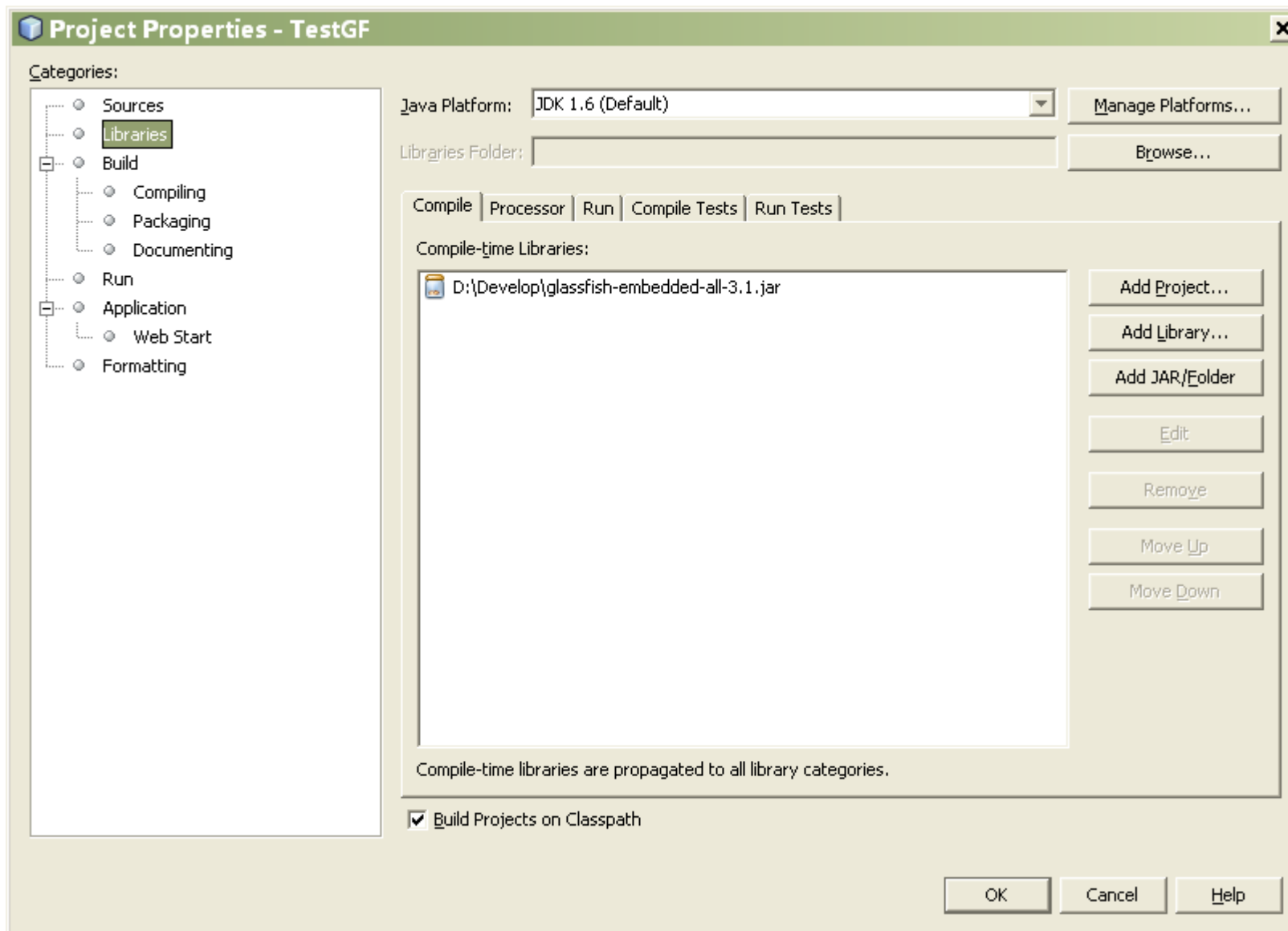
Run this project:



Build this project to create war file:



Create a java project. Add glassfish-embedded-all-3.1.jar to classpath:



All code is here.

The screenshot displays the NetBeans IDE 7.0 interface. The main editor window shows the following Java code in `MainClass.java`:

```
9 import org.glassfish.embeddable.GlassFishProperties;
10
11 public class MainClass {
12     public static void main(String[] args) throws Exception {
13         GlassFishRuntime runtime = GlassFishRuntime.bootstrap();
14         GlassFishProperties glassfishProperties = new GlassFishProperties();
15         glassfishProperties.setPort("http-listener", 8080);
16         glassfishProperties.setPort("https-listener", 8181);
17         glassfishProperties.setProperty("glassfish.embedded.tmpdir", "C:\\Program Files\\Tmp");
18         GlassFish glassfish = runtime.newGlassFish(glassfishProperties);
19         glassfish.start();
20         glassfish.getDeployer().deploy(new File("D:\\NetBeansProjects\\WebApp\\dist\\WebApp.war"));
21     }
22 }
23
```

The `Output - TestGF (run)` window shows the following error message:

```
警告: Illegal character in path at index 16: file:/C:/Program Files/Tmp/gfembed6546639236708671586tmp/applications/WebApp/WEB-INF/lib/
java.net.URISyntaxException: Illegal character in path at index 16: file:/C:/Program Files/Tmp/gfembed6546639236708671586tmp/applicati
    at java.net.URI$Parser.fail(URI.java:2809)
    at java.net.URI$Parser.checkChars(URI.java:2982)
    at java.net.URI$Parser.parseHierarchical(URI.java:3066)
    at java.net.URI$Parser.parse(URI.java:3014)
```

The status bar at the bottom indicates the current file is `TestGF (run)`, line 22 of 2, with the cursor at the end of the line.

Change the tmpdir folder:

The screenshot displays the NetBeans IDE 7.0 interface. The main editor window shows the code for `MainClass.java`. The following code is visible:

```
9 import org.glassfish.embeddable.GlassFishProperties;
10
11 public class MainClass {
12     public static void main(String[] args) throws Exception {
13         GlassFishRuntime runtime = GlassFishRuntime.bootstrap();
14         GlassFishProperties glassfishProperties = new GlassFishProperties();
15         glassfishProperties.setPort("http-listener", 8080);
16         glassfishProperties.setPort("https-listener", 8181);
17         glassfishProperties.setProperty("glassfish.embedded.tmpdir", "C:\\\\Tmp");
18         GlassFish glassfish = runtime.newGlassFish(glassfishProperties);
19         glassfish.start();
20         glassfish.getDeployer().deploy(new File("D:\\\\NetBeansProjects\\WebApp\\dist\\WebApp.war"));
21     }
22 }
23
```

The line `glassfishProperties.setProperty("glassfish.embedded.tmpdir", "C:\\\\Tmp");` is highlighted in blue. The output window at the bottom shows the following log messages:

```
信息: WEB0671: Loading application [WebApp] at [/WebApp]
2011-6-7 15:04:08 org.glassfish.deployment.admin.DeployCommand execute
PlainTextActionReporterSUCCESSDescription: deploy AdminCommandApplication deployed with name WebApp.
[name=WebApp]
信息: WebApp was successfully deployed in 3,718 milliseconds.
```

The status bar at the bottom indicates the application is running: `TestGF (run)` with a progress indicator, and the cursor is at line 17, column 75.