

Oracle Health Insurance Back Office

HTTP Service Layer (HSL) Installation & Configuration Manual

Version 1.48

Part number: G49637-01

January 15, 2026

Copyright © 2016, 2026, Oracle and/or its affiliates. All rights reserved.

This software and related documentation are provided under a license agreement containing restrictions on use and disclosure and are protected by intellectual property laws. Except as expressly permitted in your license agreement or allowed by law, you may not use, copy, reproduce, translate, broadcast, modify, license, transmit, distribute, exhibit, perform, publish, or display any part, in any form, or by any means. Reverse engineering, disassembly, or decompilation of this software, unless required by law for interoperability, is prohibited.

The information contained herein is subject to change without notice and is not warranted to be error-free. If you find any errors, please report them to us in writing.

If this software or related documentation is delivered to the U.S. Government or anyone licensing it on behalf of the U.S. Government, the following notice is applicable:

U.S. GOVERNMENT RIGHTS

Programs, software, databases, and related documentation and technical data delivered to U.S. Government customers are “commercial computer software” or “commercial technical data” pursuant to the applicable Federal Acquisition Regulation and agency-specific supplemental regulations. As such, the use, duplication, disclosure, modification, and adaptation shall be subject to the restrictions and license terms set forth in the applicable Government contract, and, to the extent applicable by the terms of the Government contract, the additional rights set forth in FAR 52.227-19, Commercial Computer Software License (December 2007). Oracle USA, Inc., 500 Oracle Parkway, Redwood City, CA 94065.

This software is developed for general use in a variety of information management applications. It is not developed or intended for use in any inherently dangerous applications, including applications which may create a risk of personal injury. If you use this software in dangerous applications, then you shall be responsible to take all appropriate fail-safe, backup, redundancy, and other measures to ensure the safe use of this software. Oracle Corporation and its affiliates disclaim any liability for any damages caused by use of this software in dangerous applications.

Oracle is a registered trademark of Oracle Corporation and/or its affiliates. Other names may be trademarks of their respective owners.

This software and documentation may provide access to or information on content, products, and services from third parties. Oracle Corporation and its affiliates are not responsible for and expressly disclaim all warranties of any kind with respect to third-party content, products, and services. Oracle Corporation and its affiliates will not be responsible for any loss, costs, or damages incurred due to your access to or use of third-party content, products, or services.

Where an Oracle offering includes third party content or software, we may be required to include related notices. For information on third party notices and the software and related documentation in connection with which they need to be included, please contact the attorney from the Development and Strategic Initiatives Legal Group that supports the development team for the Oracle offering. Contact information can be found on the Attorney Contact Chart.

The information contained in this document is for informational sharing purposes only and should be considered in your capacity as a customer advisory board member or pursuant to your beta trial agreement only. It is not a commitment to deliver any material, code, or functionality, and should not be relied upon in making purchasing decisions. The development, release, and timing of any features or functionality described in this document remains at the sole discretion of Oracle.

This document in any form, software or printed matter, contains proprietary information that is the exclusive property of Oracle. Your access to and use of this confidential material is subject to the terms and conditions of your Oracle Software License and Service Agreement, which has been executed and with which you agree to comply. This document and information contained herein may not be disclosed, copied, reproduced, or distributed to anyone outside Oracle without prior written consent of Oracle. This document is not part of your license agreement nor can it be incorporated into any contractual agreement with Oracle or its subsidiaries or affiliates.

CHANGE HISTORY

Release	Version	Changes
10.16.2.2.0	1.0	<ul style="list-style-type: none"> • Creation
10.16.2.2.0	1.1	<ul style="list-style-type: none"> • Revision
10.17.1.0.0	1.2	<ul style="list-style-type: none"> • Changed grant instructions
10.17.2.0.0	1.3	<ul style="list-style-type: none"> • Documented hsl.<app>.developermode and hsl.developermode • Added reference to Doc[2] (Back Office HTTP Service Layer User Manual)
10.17.2.1.0	1.4	<ul style="list-style-type: none"> • Extended set of relevant properties.
10.17.2.2.0	1.5	<ul style="list-style-type: none"> • Minor revision of ‘Creating a HSL database account’ • Revised ‘Security Configuration’ • Removed ‘Restricting access with custom roles’ from Security Aspects • Renamed ‘Security Aspects’ to ‘Additional Security Aspects’ and revised contents. • Added ‘Deployment Validation’ • Added ‘Appendix C – Testing with SoapUI’ • Added ‘Appendix D – Generating a WADL file’ • Extended set of relevant properties for HSL_CLA.war deployment.
10.17.2.3.0	1.6	<ul style="list-style-type: none"> • Added paragraph ‘Examining the Log File’ • Added JDK version specific information regarding JSSE configuration.
10.18.1.0.0	1.7	<ul style="list-style-type: none"> • Added Appendix E – Authentication and Authorization • Added Appendix F – HSL_AUN and HSL_AUZ Services • Revised 2.1 including diagram • Revised introduction and document title
10.18.1.2.0	1.8	<ul style="list-style-type: none"> • Added Appendix G – PSL services • Use setUserOverrides.sh instead of modifying startManagedWebLogic.sh and Server Start arguments. Support for WLS 12.2.1.3.
10.18.1.3.0	1.9	<ul style="list-style-type: none"> • Added warning about patch 28278427
10.18.1.3.0	1.10	<ul style="list-style-type: none"> • Revised installation of PSL services
10.18.1.4.0	1.11	<ul style="list-style-type: none"> • Updated ‘Additional Security Aspects’ Mentioned use of Basic Authentication for ‘admin’ requests. • Updated ‘setting user context’ in Appendix E • Added HTTP codes to ‘Troubleshooting’
10.18.1.4.0	1.12	<ul style="list-style-type: none"> • Updated HTTP codes overview in ‘Troubleshooting’ • Revised Appendix G – PSL services
10.18.2.0.0	1.13	<ul style="list-style-type: none"> • Corrected typo: hsl.auz, not hsl.aur. • Rewrote explanation of setUserOverrides.sh
10.18.2.0.0	1.14	<ul style="list-style-type: none"> • Services Components: added HSL_AUN and HSL_AUZ • WLS Preparation: fixed typos • Additional Security Aspects: removed remarks about patch 28278427 (already covered by certification matrix)
10.18.2.1.0	1.15	<ul style="list-style-type: none"> • Added example properties for new PSL service with shortname zvp • Added description of allowedorigins property to protect against cross site scripting attack
10.18.2.2.0	1.16	<ul style="list-style-type: none"> • Added additional deployment notes for HSL_C2B
10.18.2.3.0	1.17	<ul style="list-style-type: none"> • Added Appendix for HSL_IUP • Introduction of properties file templates
10.19.1.0.0	1.18	<ul style="list-style-type: none"> • No changes. Republished with different part nr.
10.19.1.4.0	1.19	<ul style="list-style-type: none"> • Added properties for logdirectory and logfilesuffix • The operation of developermode changed • Change in properties template is described • Updated description of data source creation
10.19.2.0.0	1.20	<ul style="list-style-type: none"> • Added description of deployment check verifyInterfaceVersion
10.20.1.0.0	1.21	<ul style="list-style-type: none"> • No changes, republished.
10.20.3.0.0	1.22	<ul style="list-style-type: none"> • Adapted for impact of DB 19c and FMW12.2.1.4 certification
10.20.4.0.0	1.23	<ul style="list-style-type: none"> • Added new recommended Initial Capacity configuration option for data sources in Creating a Data Source paragraph
10.20.7.0.0	1.24	<ul style="list-style-type: none"> • Introduced HSLBOWS.ear and adapted deployment instructions and references to individual web service deployments. • Introduced Appendix I as an example of limiting access to web applications through the use of a security policy
10.21.1.0.0	1.25	<ul style="list-style-type: none"> • No changes, republished with new part number
10.21.2.0.0	1.26	<ul style="list-style-type: none"> • Added descriptions about Security Models

Release	Version	Changes
10.21.5.0.0	1.27	<ul style="list-style-type: none"> Added more information on the Custom Roles security model
10.21.7.0.0	1.28	<ul style="list-style-type: none"> Custom Roles: added instructions Added Statement Timeout
10.22.1.0.0	1.29	<ul style="list-style-type: none"> Replaced base64 encoded strings with place holders; updated paragraph 3.7 for CustomRoles. Republished with new part number.
10.22.2.0.0	1.30	<ul style="list-style-type: none"> Added property maxcontentlength
10.22.5.0.0	1.31	<ul style="list-style-type: none"> Added remark about financial unit in hsl.usercontext in paragraph 5.2.3
10.22.8.0.0	1.32	<ul style="list-style-type: none"> Added Authentication with Oracle Access Manager to appendix E.
10.22.3.0.0	1.33	<ul style="list-style-type: none"> No changes, republished with a new part number.
10.23.1.0.0	1.34	<ul style="list-style-type: none"> Removed reference to online swagger editor
10.23.3.0.0	1.35	<ul style="list-style-type: none"> Corrected properties names for loglimit, logcount and logappend (paragraph 5.2.9, 5.2.10 and 5.2.11) Recommended log level settings for Production (paragraphs 5.2.8, 13.1)
10.23.6.0.0	1.36	<ul style="list-style-type: none"> Clarified impact of certification of Forms & Reports Services 12.2.1.19.0
10.23.6.0.0	1.37	<ul style="list-style-type: none"> Added Authentication with OpenID to appendix E.
10.23.7.0.0	1.38	<ul style="list-style-type: none"> Chapter 4.2 “template listing” (path */templates) removed.
10.23.7.0.0	1.39	<ul style="list-style-type: none"> Added mentions of OpenApi 3.1 support. Added information on the OpenApi 3.1 runtime documentation url. Removed dots from the chapter numbers, e.g. ..3.5.2.1 to 3.5.2.1. Added Appendix I as a regular numbered chapter instead of as an unnumbered appendix.
10.23.8.0.0	1.40	<ul style="list-style-type: none"> Added restuserbsn and restuserbsn-role for the HSL_BSNCHECK service
10.24.1.0.0	1.41	<ul style="list-style-type: none"> Republished with new part number. Corrected some typing errors. Removed mention of support for changing the language used for messages in a webservice based on the user context as this support has been removed.
10.24.2.0.0	1.42	<ul style="list-style-type: none"> Added restuseragb and restuseragb-role for the HSL_AGBCHECK service (service will be delivered in the 10.24.3.0.0 release)
10.24.5.0.0	1.43	<ul style="list-style-type: none"> Corrected some typing errors. Added Appendix J with more information regarding the monitoring and diagnostics options provided by Jersey.
10.24.8.0.0	1.44	<ul style="list-style-type: none"> Added a description of an HSL OAuth2.0 setup using Private Key JWT as a form of client authentication. As a result of this change the default authentication method for the HSL services has changed from BASIC Authentication to OAuth2.0. The instructions for setting up the HSL services with BASIC Authentication have been moved to Appendix A. Moved the following appendices to Doc[3] as these chapters are only applicable to the Private Service Layer (PSL) webservices that support the OHI JET web application: <ul style="list-style-type: none"> Appendix E – Authentication and Authorization Appendix F – HSL_AUN and HSL_AUZ Services Appendix G – HSL_JUP Service Moved the following webservices to PSL: <ul style="list-style-type: none"> HSL_AUN → PSL_AUN HSL_AUZ → PSL_AUZ HSL_JUP → PSL_JUP Moved the following properties to psl.properties and removed their use for HSL: <ul style="list-style-type: none"> hsl.sso.platform hsl.sso.openid.authorizationendpoint hsl.sso.openid.endsessionendpoint hsl.sso.openid.tokenendpoint hsl.sso.openid.clientid hsl.sso.openid.clientsecret Removed the following properties in hsl.properties: <ul style="list-style-type: none"> hsl.<app>.tokenvalidation.rotor hsl.<app>.tokenvalidation.url hsl.<app>.tokenvalidation.method hsl.<app>.tokenvalidation.headerparams hsl.<app>.tokenvalidation.queryparams hsl.<app>.tokenvalidation.bodyparams hsl.<app>.tokenvalidation.authentication hsl.<app>.usercontext.control
10.25.1.0.0	1.45	<ul style="list-style-type: none"> No changes, republished with a new part number.

Release	Version	Changes
10.25.4.0.0	1.46	<ul style="list-style-type: none"> • Changes in logging (paragraph 5.2.7) • Added paragraph outlining the importance of setting up confidential applications for the individual check webservices (paragraph 3.5.1) • Updated Appendix A – BASIC authentication, generalizing the setup of roles and users for the CHECK webservices (restuserbsn, restuserbsn-role, restuser<...>, restuser<...>-role)
10.25.7.0.0	1.47	<ul style="list-style-type: none"> • Added additional settings in 3.4.5 Creating a datasource
10.26.1.0.0	1.48	<ul style="list-style-type: none"> • No changes, republished with new part number.

RELATED DOCUMENTS

A reference in the text (**doc[x]**) is a reference to another document about a subject that is related to this document.

Below is a list of related documents:

- | | |
|---------------|---|
| Doc[1] | Object Authorisation within OHI Back Office (docs.oracle.com) |
| Doc[2] | Back Office HTTP Service Layer User Manual (docs.oracle.com) |
| Doc[3] | OHI Back Office JET Application Installation & Configuration Manual (docs.oracle.com) |

Contents

1	Introduction	10
1.1	Licenses	10
2	Architectural overview	11
2.1	Services components	11
3	Installation of HSL services	13
3.1	Terminology	13
3.2	Sizing/load aspects	13
3.2.1	Deployment choices	14
3.3	Database installation	14
3.3.1	Creating a HSL database account	14
3.4	WLS Preparation	15
3.4.1	Requirements	17
3.4.2	Creating a domain	17
3.4.3	Creating Managed Server(s)	19
3.4.4	Creating a machine definition	20
3.4.5	Creating a data source	21
3.4.6	Enable SSL	28
3.4.7	Setting up a key store	29
3.4.8	Configure Managed Server logging level	30
3.5	OAuth2.0 Authorization and OpenID Connect Authentication	31
3.5.1	Confidential applications for services with stringent security requirements	32
3.5.2	Client configuration	33
3.5.3	IDCS - confidential application setup	34
3.5.4	OHS - mod_auth_openidc installation and configuration	39
3.5.5	WLS - enable proxy plug-in	40
3.5.6	WLS - OHS as the only means of accessing HSL services	41
3.5.7	HSL service configuration	42
3.5.8	Troubleshooting OHS and mod_auth_openidc	42
3.5.9	OHS log message - nzos_Handshake: mod_wl failed	42
3.6	(Re)deployment of the HSL Application	43
3.6.1	Deploy to a single Managed Server	43
3.6.2	Deploy to multiple Managed Servers	45
3.6.3	Deploy to WebLogic cluster	45
3.6.4	Deploy for multiple environments (DTAP)	45
3.6.5	Validate deployment	46
3.7	Additional Security Aspects	46
3.7.1	Cross-Site scripting protection	46
4	Deployment validation	47

4.1	Testing with Curl.....	47
4.2	getDatabaseInfo	48
4.3	verifyInterfaceVersion	49
4.4	Get Runtime Swagger definition.....	49
4.4.1	Saving the Swagger definition to a file.....	50
4.5	Troubleshooting.....	50
5	Configuration Files for HSL services	52
5.1	Properties file templates	52
5.2	Back Office HSL properties file	52
5.2.1	hsl.<app>.jndiname /hsl.jndiname	52
5.2.2	hsl.<app>.authorization /hsl.authorization	53
5.2.3	hsl.<app>.usercontext /hsl.usercontext.....	53
5.2.4	hsl.<app>.developermode /hsl.developermode	53
5.2.5	hsl.<app>. allowedorigins /hsl.allowedorigins	54
5.2.6	hsl.<app>.logdirectory, logfilesuffix, logfile / hsl.logdirectory, logfilesuffix, logfile	54
5.2.7	hsl.<app>.loglevel /hsl.loglevel.....	55
5.2.8	hsl.<app>.loglimit /hsl.loglimit	56
5.2.9	hsl.<app>.logcount /hsl.logcount.....	56
5.2.10	hsl.<app>.logappend /hsl.logappend.....	57
5.2.11	hsl.<app>.maxcontentlength /hsl.maxcontentlength	57
5.2.12	Activating changes to hsl.properties	57
5.2.13	Troubleshooting hsl.properties	57
5.2.14	Keeping hsl.properties up to date	57
5.3	Examining the Log File	57
5.3.1	Changing the log format.....	58
6	Upgrading HSL services	60
7	Appendix A – BASIC authentication	61
7.1	Background information	61
7.2	Setup security realm.....	62
7.2.1	Setup WebLogic user for accessing the HSL application.....	62
7.2.2	Set user lockout.....	69
7.3	Testing with SoapUI.....	69
7.3.1	Create REST project and import Swagger definiton.....	70
7.3.2	Create a request	70
7.4	Generating a WADL file	71
7.4.1	Create a REST project in SoapUI for your HSL application	71
7.4.2	Open the Service Viewer for the REST Project	71
7.4.3	Export WADL from your REST project.....	72
8	Appendix B – Service Information	73
9	Appendix C – Removing a WLS domain	74
10	Appendix D – HSL C2B services – deployment points of attention	75
10.1	HSL_C2B deployment aspects.....	75

11	Appendix E – Limiting access to a specific application inside a module.....	77
12	Appendix F – Eclipse Jersey Monitoring and Diagnostics.....	79

1 Introduction

The OHI Back Office HTTP Service Layer is an optional component to provide so-called Use Case services.

Use Case services constitute a group of specific operations aiming to support use cases that are common for Dutch healthcare payers. Examples of typical use cases: requesting a new policy, adding an insured member, changing insured products, changing payment method etc.

OHI BO Use Case Services are implemented through the HTTP Service Layer (HSL).

The services in this service layer are based on RESTful Services technology which has the following advantages for current web application frameworks (like AngularJS and Oracle JET):

- Accessible through HTTP (for example through JavaScript).
- Supports (JavaScript friendly) JSON as input and output formats.
- Standardized interface language through using HTTP verbs (GET, POST, PUT, PATCH, DELETE)
- Standardized set of exceptions through HTTP error codes.

This HTTP Service Layer is intended to ease integration in a Service Oriented environment.

This document describes the generic technical details regarding the HTTP Service Layer, how to install and update it and how to change configuration settings.

1.1 Licenses

Customers are required to have the appropriate license for using the HTTP Service Layer. Customers who have acquired a Connect to Back Office (C2B) license or an OHI SOAP Service Layer (SVL) license are currently permitted to install and use the web service component of the HTTP Service Layer. This is valid until further notice.

The corresponding PL/SQL services may not be used when no Connect to Back Office license, SOAP Service Layer license or HTTP Service Layer license has been obtained.

For further information please consult your OHI sales representative.



Attention: OHI Back Office releases 10.23.6.0.x and higher are certified against Fusion MiddleWare 12.2.1.4.0 and - on top of that - Forms & Reports 12.2.1.4.0 or 12.2.1.19.0. Because the Fusion MiddleWare (FMW) version is the same and the OHI Web Services do not use any of the Forms & Reports functionality, this document will refer to an installation of Fusion Middleware 12.2.1.4.0. It should make no difference which version of Forms & Reports (if any) is installed on top of FMW 12.2.1.4.0.

2 Architectural overview

This chapter gives a high-level architectural overview of the current HTTP Service Layer implementation.

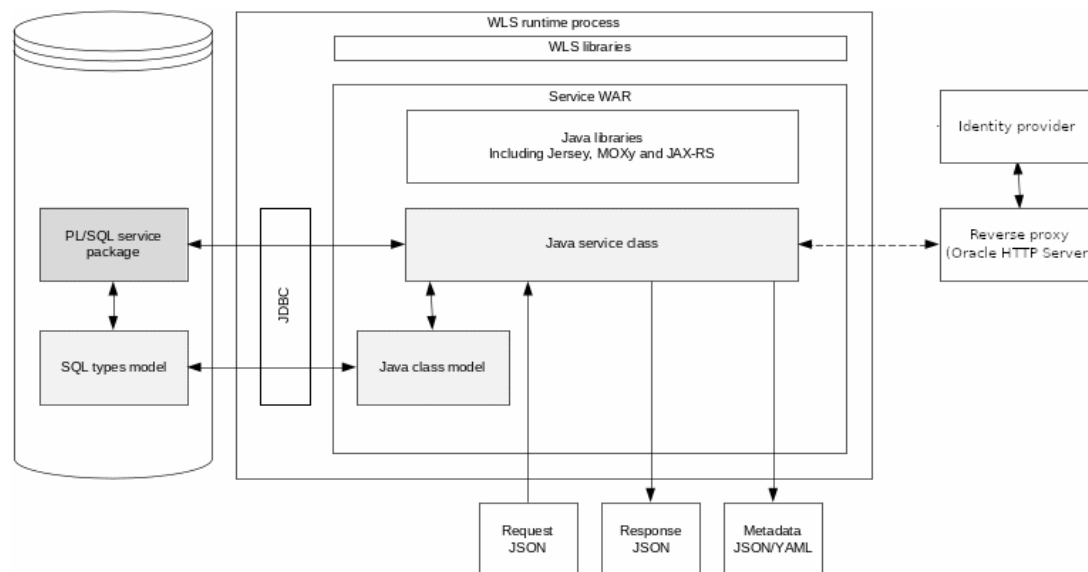
2.1 Services components

The functionality of each service is implemented through a PL/SQL service package. The service interface is provided through a Java layer.

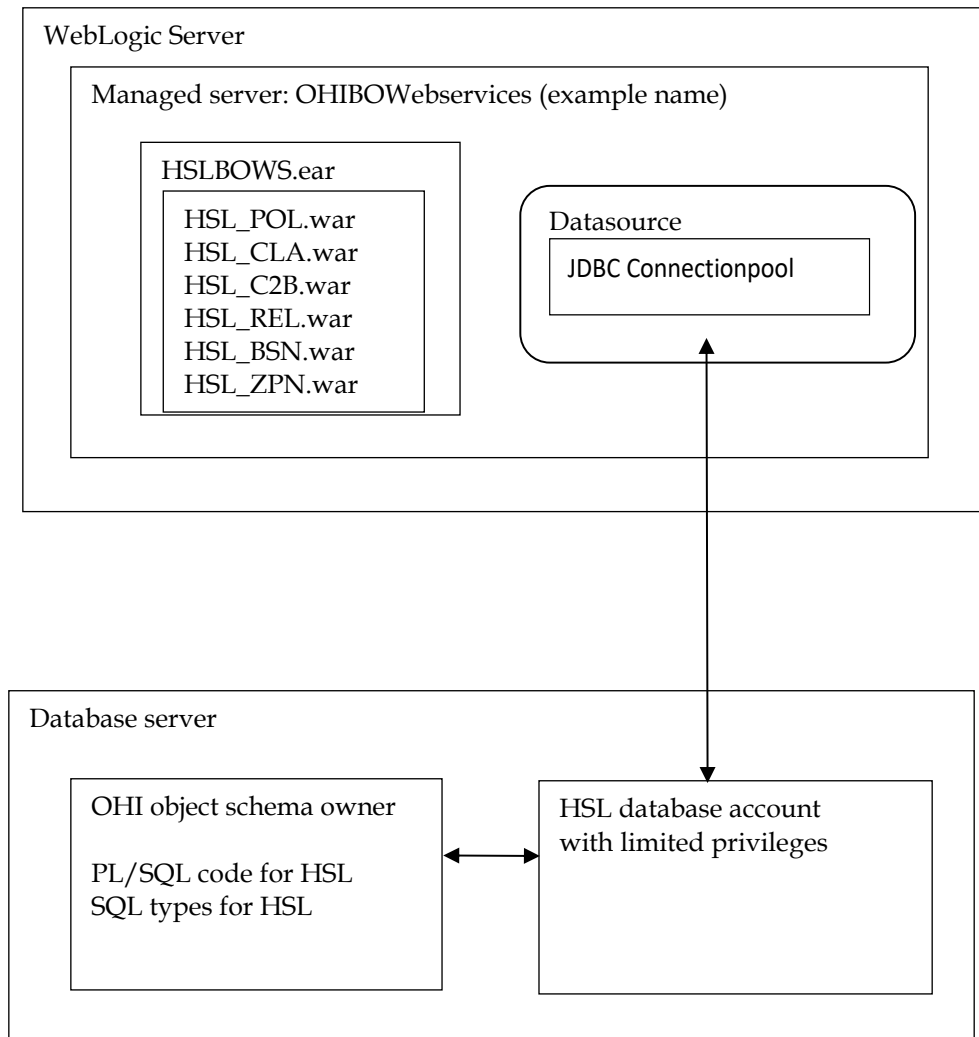
Eclipse Jersey (JAX-RS reference implementation) and EclipseLink MOXy are used to serialize and deserialize JSON objects and for input validation.

JDBC is used to map Java objects to SQL objects and vice versa.

The PL/SQL service package performs the required operations, using operation parameters and inbound objects to communicate with the OHI Back Office database.



The high-level schema below shows how the services are deployed. It also shows the database connection to OHI which uses a database account with restricted access to execute the HSL service implementation in PL/SQL.



3 Installation of HSL services

This chapter describes the steps to (re)install the HSL services.

This chapter contains the following parts to separate the various work areas:

- Sizing/load aspects
- Database installation
- WLS preparation
- Identity Provider configuration
- Oracle HTTP Server (OHS) preparation
- Setting up an OAuth2.0 resource server through the use of the `mod_auth_openidc` module for OHS.
- Security configuration
- (Re)deployment of the HSL application
- Additional Security aspects

3.1 Terminology

Note the following use of terminology:

- HSL stands for HTTP Service Layer. The underlying technology is based on RESTful service technology.
- A HSL service has one or more service operations.
- Each HSL service resides in its own HSL application (which is packaged as a WAR file).
- The HSL applications are packaged together as an EAR file, which is deployed to the WebLogic application server.

3.2 Sizing/load aspects

From the “Introduction” and the “Architectural overview” chapters it should be clear that the HSL services are functionally implemented through PL/SQL in the database.

The Java layer providing the REST interface handles request and response messages. It validates an incoming request, calls the PL/SQL service implementation to perform the required operation and transforms the result into a response message.

This choice means that the larger part of the processing is carried out on the database server and only a small part is handled on the application server.

Since the architecture for HSL is similar to the SVL services, the distribution of loads on the application and database server is expected to be comparable.

Tests with 10.24.x.x.x releases showed that for relatively small request and response messages and easy to process HSL service operations the related application and database CPU load are in the same order of magnitude. But when the size of a request and/or response message grows, the time needed for the related deserialization and serialization increases linearly with the size of the message, which may result in considerably more CPU load on the application server than on the database server. Exceptions are service operations that demand a lot of processing on the database server, such as registering or changing a policy and immediately, synchronously, processing all possible related acceptance checks.

Based on SVL experience, most of the simpler service operations on a well-sized and well-performing production environment should not take more than 0.2 up to 0.5 second in total elapsed time when measured on the WebLogic Server. Of this elapsed time a comparable amount of time should be spent by the application and database server handling the call, as mentioned before.

More complicated calls and service calls that return large data sets may take more time but usually should not exceed response times of more than a few seconds. As an example, if it would be offered, a typical premium calculation call should be executed within a second and a fetching a large set of claim lines (several hundreds) should usually be returned within 5 to 10 seconds.

3.2.1 Deployment choices

The overall load on the OHI application resulting from HSL service calls is customer specific and may change over time.

HSL services are likely to be used by customer-facing applications. Although it may technically be possible to deploy HSL services to the same application server running the Forms GUI for internal users, you should be aware of the peak loads from HSL services during commercial campaigns. These loads may well exceed your normal capacity. You should devise your own strategy to cope with these extra loads. This strategy may include using separate application servers for internet users, potentially using a separate database with cached data for information requests, throttling inbound requests, etc.

If you choose to install HSL services on the application server for the Forms GUI it is advisable to actively monitor the respective loads of Forms processes, SVL processes and HSL processes. This allows you to pick up trends to help you refine your infrastructure strategy.

Especially if you have multiple applications using the same HSL services, it may help to use a service bus to create a 'separation of concerns'. The service bus allows you to map the HSL interface specification to a customer-specific interface which means less maintenance on the client applications when deploying a new version of a HSL service. As long as the mapping on the service bus can be synchronized with the HSL service interface, the code of client applications can remain the same.

Stringent requirements for high availability and failover are also reasons to consider a service bus, combined with a load balancer, as a go-between.

3.3 Database installation

All database components of the HTTP Service Layer are owned by the OHI Back Office schema and are installed through the OHI Back Office release installation procedure.

To use the database components of the HTTP service layer, one or more database accounts must be created with HTTP Service Layer access privileges.

Before creating the account(s), check if you are licensed to use the HTTP Service Layer.

We expect that you are familiar with the DBA tasks of an Oracle database administrator in the instructions that follow.

Please check if you have a database object (package) HSL_UTIL_PCK in the OHI Back Office schema. If not, something went wrong regarding the installation of the HTTP Service Layer code. If this is incorrect, please contact the OHI Support department.

If the package is present in your database, you can continue with the database part of the installation.

3.3.1 Creating a HSL database account

The OHI Back Office schema owns the PL/SQL code to implement the HTTP Service Layer but this account may never be directly used to execute the services.

The use of a separate database account to access the HTTP Service Layer components reduces the risk of accessing unauthorized OHI data and makes that account accountable for HSL actions. The HSL account(s) only need a minimum of object privileges to the HSL database objects.

One or more HSL accounts can be created:

- Default HSL account for use with WebLogic application server
This account is configured in the HSL properties file as the default account for HSL service requests.
- Optional additional HSL accounts for use with WebLogic application server.
These may be configured in the HSL properties file for one or more specific services.
- Additional HSL account for use with bespoke PL/SQL code development by the customer. Please follow the directions in [Doc\[1\]](#).

The following steps are needed to setup a HTTP Service Layer database account:

1. Create a schema owner, for example HSL_USER. Determine the password policy, temporary tablespace, etc. according to your company standards but beware there is no interactive login which might show expiration messages for the password due to the enforced password policy.
2. Grant *create session* system privilege to this account.
3. Grant the HTTP Service Layer object privileges: logon as the OHI Back Office schema owner, enable server output, and run

```
alg_security_pck.HSL_grants
(pi_owner    => '<ohibo_owner>'
,pi_grantee => '<hsl_user_account>'
)
```

Example:

```
execute
alg_security_pck.HSL_grants
(pi_owner    => 'OZG_OWNER'
,pi_grantee => 'HSL_USER');
```

IMPORTANT: This command needs be run only once at this moment. While installing subsequent OHI BO updates, the privileges of the HSL user accounts are automatically updated.

However, if you run into ORA-01403 errors during the execution of webservice operation, your first check should be to run this command in SQL*Plus, enabling server output before running, and see whether missing grant privileges were granted.

3.4 WLS Preparation

When the database account has been created and granted successfully, a WebLogic Server environment (software home) must be prepared for deploying the HSL application.

We expect that you are familiar with the WebLogic concepts like 'Domain', 'Managed Server', 'Cluster', etc.

These are your options:

- Use the same WebLogic environment (ORACLE_HOME) which is used for servicing the OHI Back Office user interface and batches. In this case you should create a new WebLogic domain (with a new Admin Server) for the HSL applications to prevent interference with the GUI application.
- Deploy the HSL applications in a separate WebLogic environment (possibly on a separate server). This allows you to separately upgrade or patch the different WebLogic environments or implement a workload distribution.

Deploy HSL applications to multiple environments for better scalability. Be sure

to deploy each HSL application only once in a Managed Server or a cluster of Managed Servers.

- For testing purposes, you may want to have multiple versions within the same domain. In that case you should have a separate Managed Server for each deployment.

Some remarks about installing in a separate WebLogic environment:

- The OHI Back Office GUI application (Forms) installation requires a WebLogic Server “Infrastructure” installation. That means the domain created for Forms needs to have its own database schemas with OPSS and Audit database tables (created by RCU, the Repository Configuration Utility). For the HTTP Service Layer domain these schemas are not required provided you do not select more components during the domain configuration than described.
- When installing in a separate WebLogic Server environment, use a different Installer: use the “Generic” installer instead of the “FMW Infrastructure” installer. When installing in a separate WebLogic environment make sure the correct components are installed when creating the Domain. You need at least:
 - WebLogic Advanced Web Services for JAX-WS Extension - 12.2.1.4.0 [oracle_common]
 - WebLogic JAX-WS SOAP/JMS Extension - 12.2.1.4.0 [oracle_common]

When you have not installed these components your web services will respond with ‘There are error messages.’ All info in the functionalFaultType will contain question marks (???).

The instructions in the following paragraphs cover the setup of a new domain including the setting up of Managed Servers, a machine definition, data sources, etc.

This will support the following scenarios:

- ✓ Creating a separate domain with a single Managed Server
- ✓ Creating a separate domain with a cluster of 2 Managed Servers
- ✓ Adding a Managed Server to an existing domain

Using *setUserOverrides.sh*

Traditionally, Server Start arguments for the WebLogic Managed Server had to be added in multiple locations (depending on the way the Managed Servers were started):

- Via the Admin console: in the tab “Server Start” in the field “Arguments” for Admin Servers and Managed Servers
- In the script \$DOMAIN_HOME/bin/startManagedWebLogic.sh for Managed Servers
- In script \$DOMAIN_HOME/bin/startWebLogic.sh for Admin Servers

WebLogic 12.1.2 introduced a better way to pass Server Start arguments to the WebLogic servers. See document “How To Customize Env Parameters Via 'setUserOverrides.sh' File (In WLS 12.1.2.0.0 ~ 12.2.1.4.0) (Doc ID 2138183.1)” on My Oracle Support for details.

By using setUserOverrides.sh the Server Start arguments only need to be maintained in one place. This document will assume you use this new method, and it will only give instructions for setting the Server Start arguments using this method. The file is located here:

\$DOMAIN_HOME/bin/setUserOverrides.sh

3.4.1 Requirements

The following requirements/limitations must be taken into account:

- ✓ A certified WebLogic Server version including JAX-WS (SOAP/JMS) extensions. The HSL services must be deployed on a single Managed Server or a cluster of Managed Servers (the 'target').
- ✓ The HSL services may not be deployed on a Managed Server which is also used for hosting the OHI GUI application (Forms). The Managed Server may not belong to a cluster used for deploying the GUI application.
- ✓ One deployment can only service one single OHI Back Office environment (it connects to a specific connection pool which accesses a specific OHI Back Office 'instance').

If the HSL application must be deployed more than once (for servicing different OHI Back Office environments) each deployment should be on its own Managed Server or Cluster.

HSL can be deployed on the same Managed Servers as SVL and PSL.

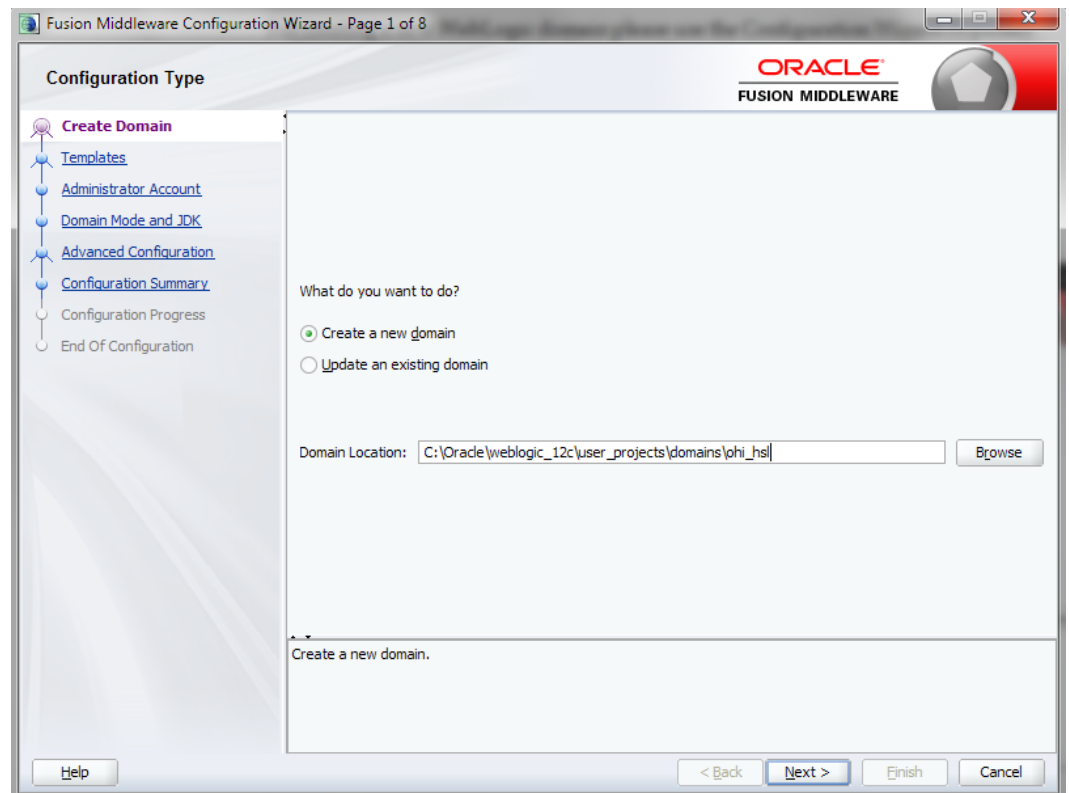
3.4.2 Creating a domain

Before creating a Domain, be sure to understand the difference between a "FMW Infrastructure" and a "Generic" WebLogic installation, and the consequences. Make sure the environment variable DOMAIN_HOME is not set.

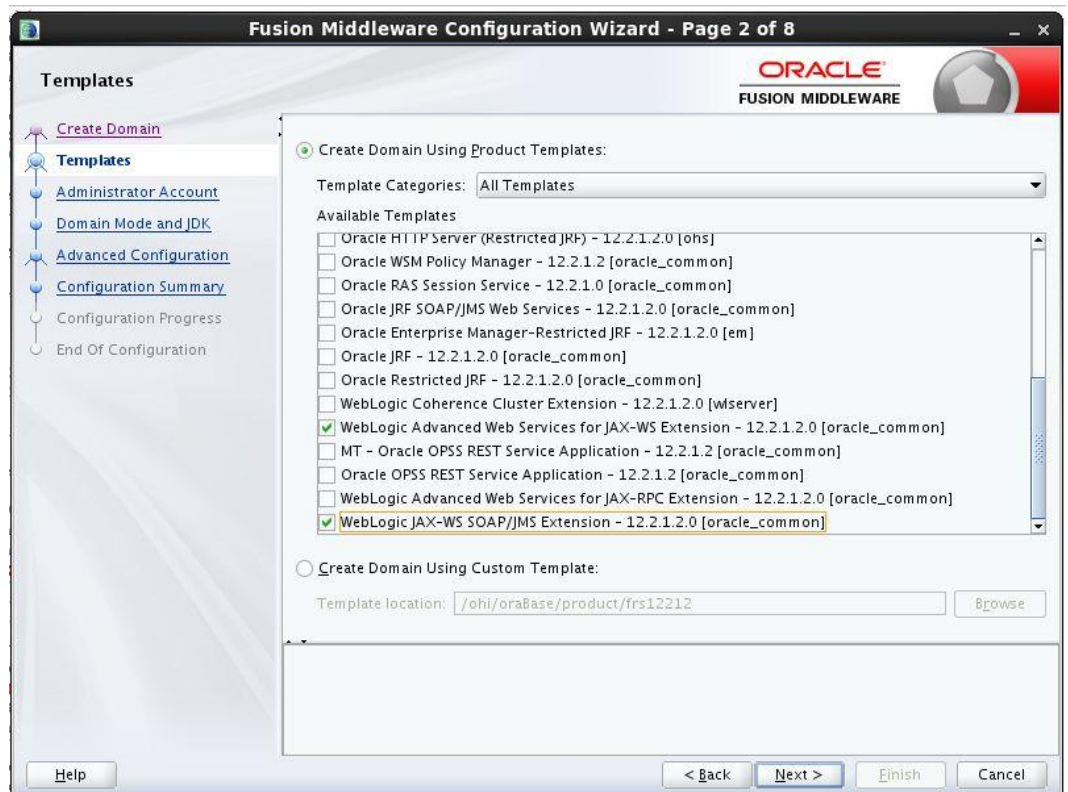
If you create the new WebLogic Domain from the same software home as the Forms Domain, you must choose the same "Domain Mode" (Development or Production), to avoid errors during startup of the new Managed Server(s).

For creating a new WebLogic domain, please use the Configuration Wizard (typically in the common/bin folder of the WebLogic Server home, so for example `$MW_HOME/oracle_common/common/bin/config.sh`) or use your own scripting.

Specify the domain location. This is inside the WebLogic Home by default, but you can specify a location outside the WebLogic Home. The last part of the location will be the Domain Name.



When creating a new domain select at least the options as shown below.

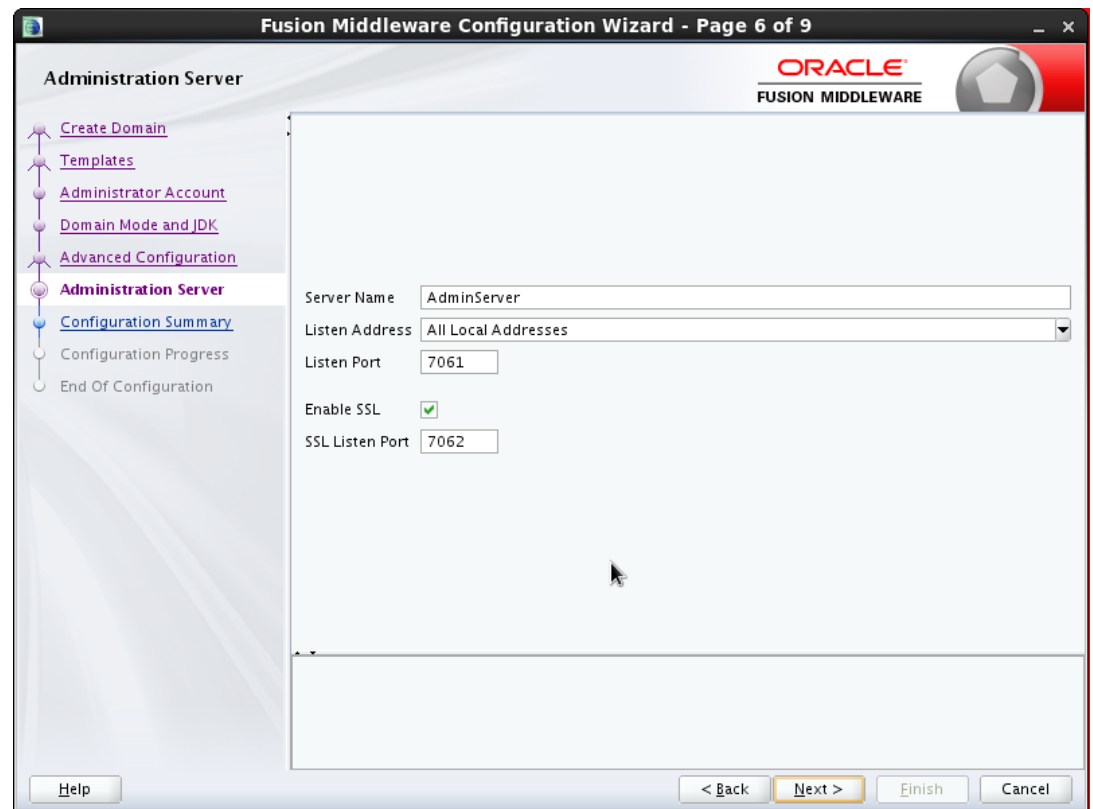


In the next screens, specify the *username* and *password* for the domain administrator account. When prompted for developer or production mode choose *production mode* and pick a JDK.

In this documentation we choose to configure only the Administration Server using the wizard. The Administration Server can be used as the starting point for additional configuration options you may want to choose later:



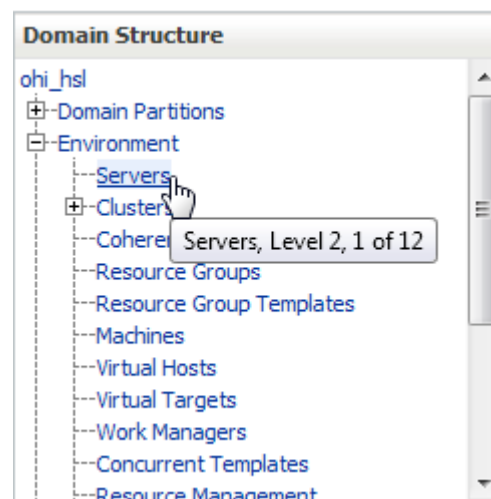
For the Administration Server a free port number must be specified. Enable SSL to support secure connections. An example using non default ports is shown below.



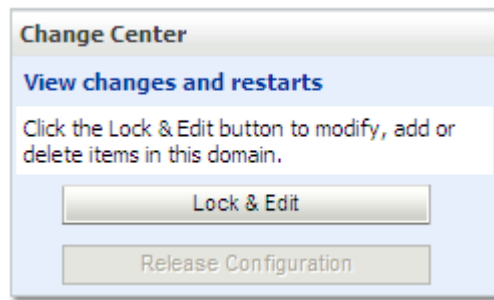
3.4.3 Creating Managed Server(s)

Start the Administration Server (of the existing or newly created domain) using the startWebLogic.sh script (this is present in the root folder of the domain folder, which you created through the Configuration Wizard).

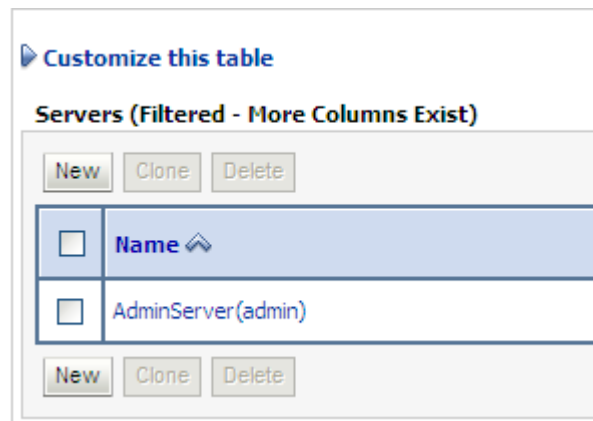
After it has started, logon to the console and choose the Servers option in the left panel:



In the Change Center choose Lock & Edit to get into editing mode.



This enables the New option in the 'Summary of Servers' overview:



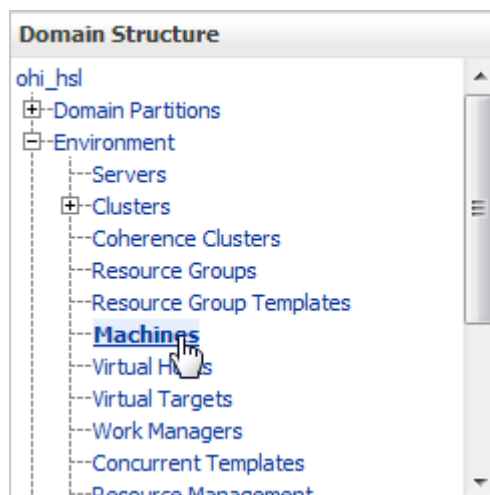
You need to provide a name and listening port for the Managed Server. For easy reference you may want to include the domain name in the name of the Managed Server, for example 'ms_ohi_hsl'.

At this point you should decide whether or not to make the Managed Server part of a Cluster.

If no Cluster exists you can create one; if there is an existing Cluster you can make the Managed Server a member of the Cluster.

3.4.4 Creating a machine definition

It is recommended to create a machine definition to make it easier to start up Managed Servers:



You can now assign Managed Servers to the new machine definition. In the example below Managed Server ms_ohi_hsl is assigned to Machine1.

<input type="checkbox"/>	ms_ohi_hsl	Configured		Machine1
--------------------------	------------	------------	--	----------

If you start a Node Manager you can use the console to start the Managed Servers.

You need to associate the machine with the Node Manager so that the Node Manager can start the Managed Server within the domain of the machine definition.

Do this in the Node Manager tab for the machine definition like in the example below:

Settings for Machine1

Configuration | Monitoring | Notes

General | **Node Manager** | Servers

This page allows you to define the Node Manager configuration for this machine. To control a Managed Server from Node Manager must be configured and running on the machine where the Managed Servers are installed.

The settings defined on this page are used to configure communication between the current domain and Node Manager that control Managed Servers. This page does not control the configuration of the Node Manager instances.

Type: Returns the node manager type.

Listen Address: The host name or IP address where Node Manager listens for connection requests. [Info...](#)

Listen Port: The port number where Node Manager listens for connection requests. [More Info...](#)

Node Manager Home: Returns the node manager home directory that will be used to substitute for the home directory in the command template. [More Info...](#)

Make sure the listen address is the actual listen address that is used by the Node Manager. This is passed as first parameter to the `$WL_HOME/server/bin/startNodeManager.sh` shell script. The correct value can be found as `ListenAddress` in the file `nodemanager.properties`.

This address can be changed in the file `nodemanager.properties` which is located in the `<domain home>/nodemanager` folder. This is necessary when you have a node manager per domain.

You need to create a `boot.properties` file for the new Managed Server for the domain in the domain home Managed Server `../data/nodemanager`.

This is done automatically when you start the Managed Server in the console (after you have started the AdminServer for the domain).

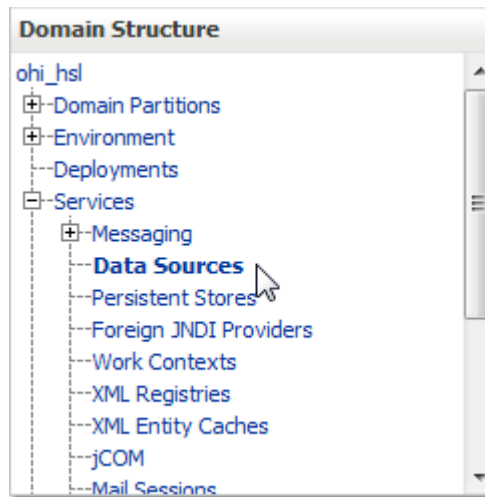
When you are running in Development Mode, a `boot.properties` file is automatically created for the AdminServer.

Because you are running in Production Mode, you need to create the file yourself, in the `$DOMAIN_HOME/servers/AdminServer/security` folder. This file is used when the AdminServer is started by the script `startWebLogic.sh`. If the file is not present, the script prompts for the username/password. The same goes for the Managed Servers when you start them through a script.

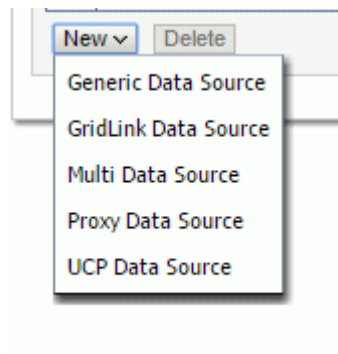
3.4.5 Creating a data source

The HSL application needs a data source to connect with the OHI Back Office database.

To create a data source, navigate in the Domain Structure panel on the left to the data sources option. Choose 'Lock & Edit' so you can create a new data source.



Create a new 'Generic data source' in case of a 'regular' database instance:



When the data source connects to a RAC data source it is more useful to choose for 'GridLink Data Source' as this can respond to instance state changes.

Next, choose a name for the data source to reflect its purpose. For example, you may want to reference the database name: DS_OHI_prd or DS_VOHI_DEV.

Next specify a JNDI name. The JNDI name will be used in the properties file for starting the HSL application.

Specify 'Oracle' as the database type (for GridLink this is a predefined value).

An example:

Home Log Out Preferences Record Help

Home > Summary of JDBC Data Sources


Create a New JDBC Data Source

Back Next Finish Cancel

JDBC Data Source Properties

The following properties will be used to identify your new JDBC data source.
* Indicates required fields


What would you like to name your new JDBC data source?

 * Name: DS_vohi_dev

What scope do you want to create your data source in ?

Scope: Global ▼

What JNDI name would you like to assign to your new JDBC Data Source?

 JNDI Name:
jdbc/DSvohi

What database type would you like to select?

Database Type: Oracle ▼

Back Next Finish Cancel

Next you need to specify a database driver. For regular database instances, use “Oracle’s Driver (Thin) for Service connections; Versions: Any”.

Home Log Out Preferences Record Help

Home > Summary of Machines > ol6ohi.ohi.oracle.com > Summary of JDBC Data Sources

Create a New JDBC Data Source

Back Next Finish Cancel

JDBC Data Source Properties

The following properties will be used to identify your new JDBC data source.

Database Type: Oracle

What database driver would you like to use to create database connections? Note: * indicates that the driver is explicitly supported by Oracle WebLogic Server.

Database Driver:

- *Oracle's Driver (Thin) for Service connections; Versions:Any
- *Oracle's Driver (Thin XA) for Application Continuity; Versions:Any
- *Oracle's Driver (Thin XA) for Instance connections; Versions:Any
- *Oracle's Driver (Thin XA) for RAC Service-Instance connections; Versions:Any
- *Oracle's Driver (Thin XA) for Service connections; Versions:Any
- *Oracle's Driver (Thin) for Application Continuity; Versions:Any
- *Oracle's Driver (Thin) for Instance connections; Versions:Any
- *Oracle's Driver (Thin) for RAC Service-Instance connections; Versions:Any
- *Oracle's Driver (Thin) for Service connections; Versions:Any
- *Oracle's Driver (Thin) for pooled instance connections; Versions:Any
- DataDirect's Oracle Driver (Type 4 XA) Versions:Any
- DataDirect's Oracle Driver (Type 4) Versions:Any
- Other

Back Next Finish Cancel

If you are using RAC (or considering using RAC) choose the thin RAC driver if you created a regular data source (we do not advise this anymore, but in previous versions of this manual this was the usual option). Do NOT use the XA driver.

When you have chosen to create a GridLink data source use "Oracle's Driver (Thin) for GridLink Connections, Versions: Any".

Choose the following Transaction Options:

- 'Supports Global Transactions'
- 'One-Phase Commit' (this is why you don't need the XA driver)

Example:

Home Log Out Preferences Record Help
Welcome, weblogic Connected to: ohi_svl

Home > Summary of Machines > ol6ohi.ohi.oracle.com > Summary of JDBC Data Sources

Create a New JDBC Data Source

Back Next Finish Cancel

Transaction Options

You have selected non-XA JDBC driver to create database connection in your new data source.

Does this data source support global transactions? If yes, please choose the transaction protocol for this data source.

☒ **Supports Global Transactions**

Select this option if you want to enable non-XA JDBC connections from the data source to participate in global transactions using the *Logging Last Resource* (LLR) transaction optimization. Recommended in place of Emulate Two-Phase Commit.

☐ **Logging Last Resource**

Select this option if you want to enable non-XA JDBC connections from the data source to emulate participation in global transactions using JTA. Select this option only if your application can tolerate heuristic conditions.

☐ **Emulate Two-Phase Commit**

Select this option if you want to enable non-XA JDBC connections from the data source to participate in global transactions using the one-phase commit transaction processing. With this option, no other resources can participate in the global transaction.

☒ **One-Phase Commit**

Back Next Finish Cancel

Next specify the connection details like the example on the page below. Be sure to use values which are valid for your environment.

Create a New JDBC Data Source

Back Next Finish Cancel

Connection Properties

Define Connection Properties.

What is the name of the database you would like to connect to?

Database Name: btspc03

What is the name or IP address of the database server?

Host Name: slc01qrw.us.oracle.com

What is the port on the database server used to connect to the database?

Port: 1521

What database account user name do you want to use to create database connections?

Database User Name: hsl_user

What is the database account password to use to create database connections?

Password: ●●●●●●

Confirm Password: ●●●●●●

Additional Connection Properties:

oracle.jdbc.DRCPConnectionClass: |

Back Next Finish Cancel

On the next page the result of your answers will be shown. You can test the connection with the data shown (the table name is not relevant).

When you navigate to the next page you can select the targets where the data source should be deployed to. In the example below only the Managed Server shown will be used for deploying the data source to.

Servers

☐ AdminServer

☒ ms_ohi_hsl

Back Next Finish Cancel

Press Activate Changes to conclude your configuration.

At this point, go back to your data source and re-open the connection pool tab.

Initial Capacity setting

Consider setting the 'Initial Capacity' to 0. During the setup of new connections a health check, if you configured this (for more information see the OHI Release Installation manual), claims a shared lock that might stall (patch) sessions and vice versa.

Setting this option to zero implies no connections are set up after the connection pool is initialized but only on demand. Press Lock & Edit and set the option to 0 and press Save.

Initial Capacity: 0

Test Connections On Reserve

Test Frequency

Test Table Name

Seconds to Trust an Idle Pool Connection

When “Statement Timeout” (see below) is set an execution of a statement can be interrupted. This could lead to the following error in subsequent calls:

“The current transaction is not allowed, because the current PL/SQL definition is defined as 'Query only'!”

To prevent this error for subsequent calls, set the following properties in the advanced settings of the Connection Pool tab:

- Test Connection On Reserve: checked
- Test Frequency: 0 seconds
- Test Table Name: SQL begin alg_public_pck.session_health_check(); end;
- Seconds to Trust an Idle Pool Connection: 0 seconds

The screenshot shows the 'Advanced' tab in a configuration window. It contains four settings:

- Test Connections On Reserve:** A checkbox that is checked.
- Test Frequency:** A text input field containing the value '0'.
- Test Table Name:** A text area containing the SQL code:

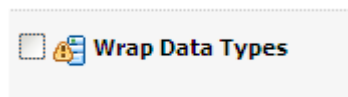
```
SQL begin
alg_public_pck.session_health_check();
end;
```
- Seconds to Trust an Idle Pool Connection:** A text input field containing the value '0'.

Wrap Data Types setting

Navigate to the ‘Advanced’ part.

Ensure that the option ‘Wrap Data Types’ is unchecked. This setting is needed for passing CLOB objects to and from the database and when activated slows down execution. Uncheck this option and press Save and Activate the change.

Example:



Statement Timeout

Consider activating the ‘Statement Timeout’. This is the time after which a statement currently being executed will time out. This can be used to limit the impact of run-away queries (e.g. if a bad execution plan is chosen or a wildcard search is not selective). Especially in scenarios where the requestor (e.g. OSB) stops listening after a certain period – and possibly retries the same operation several times – continued execution of these long running queries can overload the database. This can have serious effects on the performance of other web services. In those cases, it is better to cancel the query (after a period that is a little longer than the timeout of the requestor).

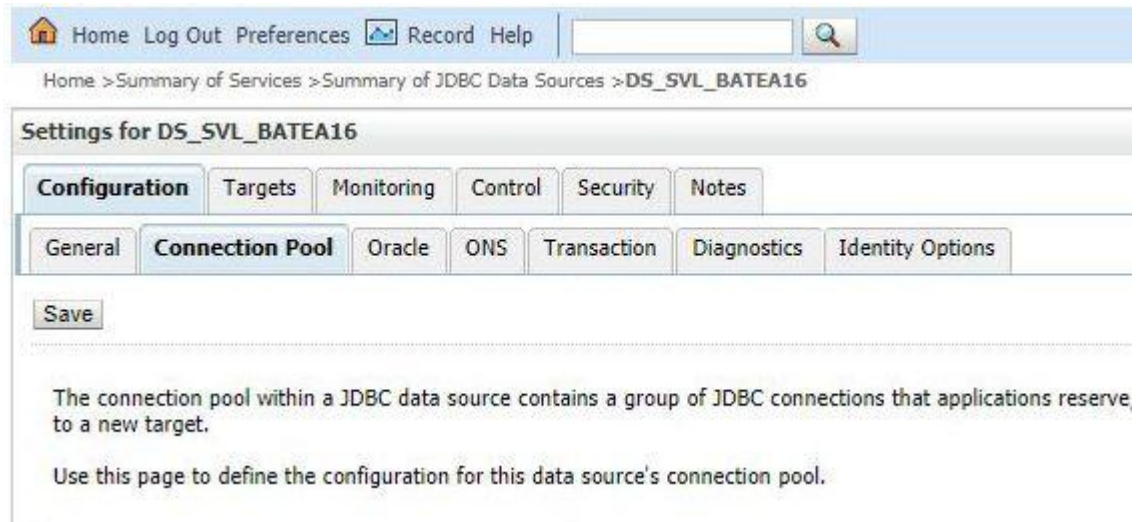
Queries that are cancelled will result in a technical fault:

ORA-01013: user requested cancel of current operation
or
ORA-03111: break received on communication channel

Note that it is possible to specify different data sources for different web services (see [properties file for the HSL web services](#)). This can be used to specify different timeouts for different web services. You could create a data source with a long timeout for web services that usually take longer and one for web services that are normally quick.

Be aware that the 'Statement Timeout' is only about database processing. Any processing of output by the Middle Tier is not included in this period.

To activate 'Statement Timeout', go back to your data source and re-open the connection pool tab.



Home Log Out Preferences Record Help

Home > Summary of Services > Summary of JDBC Data Sources > DS_SVL_BATEA16

Settings for DS_SVL_BATEA16

Configuration Targets Monitoring Control Security Notes

General **Connection Pool** Oracle ONS Transaction Diagnostics Identity Options

Save

The connection pool within a JDBC data source contains a group of JDBC connections that applications reserve to a new target.

Use this page to define the configuration for this data source's connection pool.

Navigate to the 'Advanced' part and change the default value of -1 to a value (in seconds) that is appropriate for your situation.



Statement Timeout: 15

Press 'Save' and 'Activate Changes' to conclude your configuration. You may have to restart your Managed Server to activate this setting.

3.4.6 Enable SSL

The HSL services are preconfigured to use a default policy which uses SSL. Therefore, you need to enable SSL for every Managed Server to which you deploy the HSL application.

Go to the Managed Server configuration and enable SSL in the 'Configuration > General' tab:

Settings for ms_ohi_hsl

Configuration Protocols Logging Debug Monitoring Control Deployments Services Security Notes

General Cluster Services Keystores SSL Federation Services Deployment Migration Tuning Overload Concurrency Health Monitoring

Save

Use this page to configure general features of this server such as default network communications.

Name: ms_ohi_hsl

Template: (No value specified) Change

Machine: Machine1

Cluster: (Stand-Alone)

Listen Address: localhost

☒ Listen Port Enabled

Listen Port: 7063

☒ SSL Listen Port Enabled

SSL Listen Port: 7064

☐ Client Cert Proxy Enabled

Java Compiler: javac

Diagnostic Volume: Low

Default Datasource:

Advanced

Save

In previous versions of WebLogic, you needed to configure the Java Secure Socket Extension (JSSE) if the JDK version was below JDK 1.8.0_162. Because the minimum JDK version for WebLogic 12.2.1.4.0 is JDK 1.8.0_221, no further action is needed.

3.4.7 Setting up a key store

For testing purposes, you may want to use the built-in keystore as shown below in the 'Configuration > Keystores' tab for the Managed Server:

Note that in a production environment it is not safe to use the demo keystore.

For more information about configuring keystores please read the WebLogic documentation. As a starter you can use this address: [Configuring Keystores](#)

It contains references to pages which describe in more detail how to obtain private keys, digital certificates, etc.

You should take action and not rely on the demo keystore!

3.4.8 Configure Managed Server logging level

The standard logging level for a Managed Server regarding security issues is intentionally non-informative to discourage fraudulent users.

A typical security-related error message looks like:

'Unknown exception, internal system processing error.'

In non-production environments it might be useful to enable more verbose logging, this can be achieved with the following Server Start argument for the Managed Server:

```
-Dweblogic.wsee.security.debug=true
```

Create a new file \$DOMAIN_HOME/bin/setUserOverrides.sh and add the following text:

```
#!/bin/bash
echo Adding Settings from UserOverrides.sh

# global settings (for all servers)
# this will decrease start up times
```

```

JAVA_OPTIONS="-Djava.security.egd="file:/dev/./urandom" ${JAVA_OPTIONS}"
export JAVA_OPTIONS
CONFIG_JVM_ARGS="-Djava.security.egd=file:/dev/./urandom ${CONFIG_JVM_ARGS}"
export CONFIG_JVM_ARGS

# specify additional java command line options for the Admin Server
# if [ "${SERVER_NAME}" = "${AS_NAME}" ]
# then
#
# fi
# export JAVA_OPTIONS

# specify additional java command line options for specific servers
if [ "${SERVER_NAME}" = "ms_ohi_hsl" ]
then
    # add settings for HSL
    # Custom Setting for ms_ohi_hsl to set debug level for SSL
    JAVA_OPTIONS="-Dweblogic.wsee.security.debug="true" ${JAVA_OPTIONS}"
fi
export JAVA_OPTIONS

```

Replace the server name ms_ohi_hsl with your server name.

When startup times of your service calls are important and the security of the connection is less important you may consider to specify an alternative for retrieving cryptographically strong random numbers (included above):

```

JAVA_OPTIONS="-Djava.security.egd="file:/dev/./urandom" ${JAVA_OPTIONS}"

```

Restart the Managed Server to enable the newly set option.

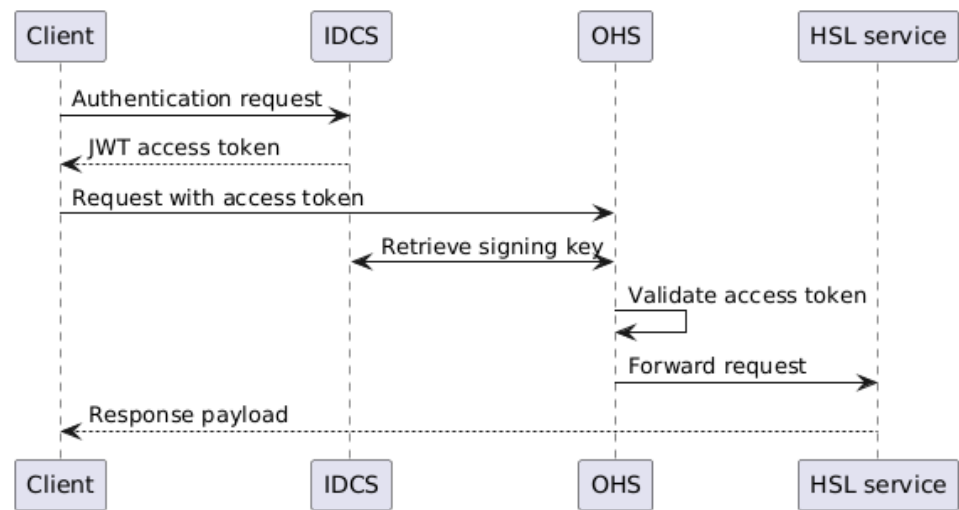
3.5 OAuth2.0 Authorization and OpenID Connect Authentication

As part of OHI release 10.24.8.0.0 a new way of securing the HSL webservices has been introduced. This setup is based on the OAuth2.0 authorization framework. As an alternative the services can be secured using Basic authentication, details for which can be found in Appendix A. The setup described in this chapter is the preferred option for securing the HSL services.

The setup uses a commonly used open-source module for the Apache HTTP server. This module can also be used for the Oracle HTTP server (OHS). The module allows OHS to act as an OAuth2.0 Resource Server, protecting access to the HSL services.

After client applications authenticate against an Authorization Server (which for the purposes of this manual will be Oracle Identity Cloud Service, in short IDCS, but could also be Microsoft Entra ID, formerly known as Azure AD) they will receive an access token. The Resource Server validates the access tokens the client received from the Identity Provider, sets headers and forwards the request to the HSL services, or denies access based on the validation result.

After setting up all the required components you will have a setup that allows client applications to authenticate themselves to IDCS, receiving an access token in the form of a JSON Web Token (JWT) as a part of this interaction. The JWT can then be added as part of the Authorization HTTP header to requests to the OAuth2.0 Resource Server (OHS in this manual). The resource server provides the only means of accessing the HSL services, acting as an intermediary (also known as a reverse proxy) that forwards requests to the HSL services upon successful validation of the access token. Schematically, a successful first interaction will look like this:



The description of the required configuration will start with the client and will continue inward, toward the HSL services. Along the way the components themselves, and the interactions between them will be discussed in more detail.

3.5.1 Confidential applications for services with stringent security requirements

OHI Web Services require a non-guessable UUID as an identifier of the object the caller wants information about.

To start the conversation, the caller therefore needs to get the UUID of the object. For certain types of objects, it is not sufficient to supply a single guessable identifier, as that is deemed insecure.

For example, relations (persons) can be identified by their 'BurgerServiceNummer' (BSN)(Social Security number), but these BSNs come from a publicly known range, so a malicious caller could simply do repeated call with random numbers from the BSN range, get the UUIDs for each and use those to retrieve a lot of confidential information about the persons.

To prevent this abuse, two security measures have been implemented:

- To start the conversation with the regular OHI Web Services, a second data element is required in addition to the first, guessable identifier. For persons, the date of birth must be supplied in addition to the BSN. Only if these match will the regular OHI Web Service return the UUID of the person.
- The second data element can only be retrieved from a special check service that requires a separate authentication. For persons, this check service will return the date of birth for the supplied BSN.

It is important that these check operations are authenticated separately from the regular webservice operations, to implement this additional line of defense.

Each individual check service should have an individual authentication, to make sure a breach of authentication of one check service does not compromise the other check services.

When using OpenID Connect specification (OIDC) for authentication, it is of vital importance to set up so-called 'confidential applications' with unique private keys to support separate authentication for the individual check services in your Identity Cloud Service. See paragraph 3.5.3.

For more information refer to Doc[2] paragraph 3.4.

When using Basic authentication this separate authentication can be realized through separate sets of credentials as outlined in Appendix A. A future version of this document will provide steps outlining the setup of confidential applications for services with more stringent security requirements.

3.5.2 Client configuration

Before a client may request access to a protected resource like the HSL services it must first authenticate itself. OAuth2.0 only describes authorization and leaves authentication of clients to be implemented by other specifications. The OpenID Connect specification (OIDC) builds on the OAuth2.0 framework standardizing mechanisms for clients to authenticate against Authorization Servers. What follows is a description of how a client application authenticates itself to IDCS using the Private Key JWT method of OIDC.

Public-key cryptography is used as a means for the client to prove to the Authorization Server it is communicating with a known client. This works by having the client application sign a JSON Web Token (JWT) with its private key. The JWT serves as an intermediate credential that can be sent to an Authorization Server along with a request for a specific scope of access to a protected resource. The protected resource here being an HSL service. The received JWT (called the authorization grant in OAuth2.0 parlance) is verified by IDCS by checking the signature with the public key counterpart that has been uploaded in advance as part of the IDCS setup (described in the next chapter). Note that values between '<>' are placeholder values and need to be replaced with values obtained from IDCS.

The header of the JWT consists of the following:

```
{
  "alg": "RS256",
  "typ": "JWT",
  "kid": "<KEY ID>"
}
```

The body of the JWT consists of a number of claims:

```
{
  "iss": "<CLIENT_ID>",
  "sub": "<CLIENT_ID>",
  "aud": "https://identity.oraclecloud.com/",
  "jti": "<UUIDv4>",
  "iat": "<Unix time>",
  "exp": "<Unix time + 5 minutes>"
}
```

Explanation:

- alg: algorithm used to encrypt the JWT
- typ: Token type.
- kid: Key ID. The alias given to the uploaded public key (configured in the next chapter).
- iss: Issuer. As the client creates the authorization grant, the client itself is the issuer.
- sub: Subject. Refers to the client the grant is used to request an access token for.
- aud: Audience. Identifies the Authorization Server as an intended audience.
- jti: JWT ID. Unique identifier for the token.
- iat: Issued At. Time at which the JWT is issued.
- exp: Expiration time after which the JWT must not be accepted for processing

To create a validly signed JWT it is recommended to use one of the readily available libraries that offer such functionality. See <https://jwt.io/libraries> for several options in a variety of programming languages.

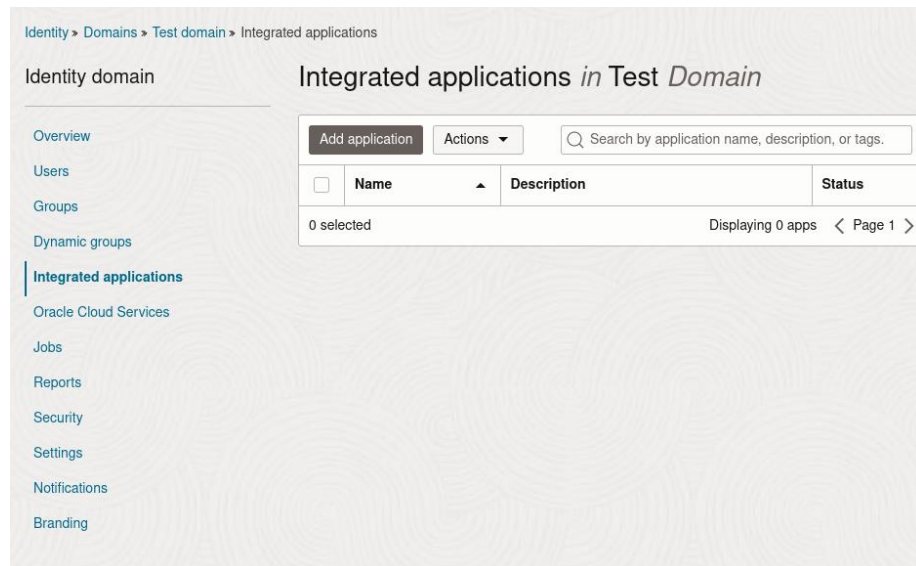
Before the signed JWT can be used, IDCS needs to be configured to receive it.

3.5.3 IDCS – confidential application setup

To be able to access protected resources the client application first needs an access token from the authorization server. In this case IDCS. The server needs to be setup beforehand. This is done by setting up a confidential application for an HSL client application.

A confidential client is considered confidential for its ability to keep a secret. Specifically, to keep its private key secret as we're using public key cryptography for signing and verifying JWT's.

To add a new confidential application, navigate from the cloud console to the relevant identity domain ("Test domain" in the following description). From the domain overview navigate to "Integrated application." From there the "Add application" button can be used to start the setup.



Provide a name and description for the new application.

Add Confidential Application

1 Add application details

2 Configure OAuth

3 Configure policy

Name

Required

Description *Optional*

Application icon

X

If the service account that's used to access the HSL applications is managed through IDCS then consider enabling the "Enforce grants as authorization" option.

the Social linking callback URL specified in Session settings will be used.

1 Add application details
2 Configure OAuth
3 Configure policy

Display settings

☐ Display In My Apps
Select if you want the application to be listed for users on their My Apps page.

☐ User can request access
Select if you want to allow users to request access to the application from the Catalog.

Authentication and authorization

Define a more detailed authentication and authorization configuration.

☐ Enforce grants as authorization
Select if you want to allow access to this app only if the user has been granted this app.

Press next and add a Resource Server configuration.

Resource server configuration

☒ Configure this application as a resource server now
 ☐ No resource server configuration

Configure application APIs that need to be OAuth protected

Access token expiration (seconds)

3600

☐ Allow token refresh
Select if you want to use the refresh token that you obtain when using the Resource Owner, Authorization Code, or Assertion grant types.

Primary audience

hsl

Enter the primary recipient where the access token of your application is processed.

☐ Add secondary audience
Enter the secondary recipients where the access token of your application is processed.

☒ Add scopes
Add scopes to specify which of the application's resources are available to other applications.

Scopes

Add Remove

<input type="checkbox"/>	Scope	Protected	Display name	Description	Requires user consent
<input type="checkbox"/>	api:full	No	API access to the HSL webservice	API access to the HSL webservice	No

0 selected Showing 1 item

Enter a primary audience and create relevant scopes. As we're configuring access to the HSL services 'hsl' is used here as the primary audience (primary recipient of access tokens generated by IDCS). Scopes describe what kinds of resources are available to other applications. We'll use the scope(s) defined here to restrict or allow access to resources by client applications by adding them in the context of specific resources in the configuration of OHS later on.

Client configuration

☒ Configure this application as a client now
 ☐ Skip for later

Authorization

Allowed grant types ⓘ

☐ Resource owner
 ☐ Authorization code

☒ Client credentials
 ☐ Implicit

☐ JWT assertion
 ☐ SAML2 assertion

☐ Refresh token
 ☐ TLS client authentication

☐ Device code

☐ Allow non-HTTPS URLs ⓘ

Redirect URL *Optional* ⓘ

×

+ Another redirect URL

Post-logout redirect URL *Optional* ⓘ

×

+ Another post-logout redirect URL

Logout URL *Optional*

Enter the URL to be called during the logout process. When this URL is called, the resource owner session is terminated.

Client type ⓘ

☐ Trusted
 ☒ Confidential

Certificate *Optional*

Import certificate

Allowed operations ⓘ

☐ Introspect
 ☐ On behalf of

ID token encryption algorithm

None

Select one of the available content encryption algorithms so that ID tokens passed through third parties, such as browsers, are encrypted.

Moving on to the client configuration, starting with the allowed grant types.

The only allowed option in this case is the client credentials flow. The client credentials grant flow permits a client application to use its own credentials (signed JWT) to authenticate when calling IDCS endpoints, instead of having to impersonate a user, for example.


You'll note the URLs in the configuration below are left empty. As the application is capable of requesting access to protected resources based on its own credentials there is no use for logout or redirect URLs. The application would simply be able to request a new token with which it can access a resource.

The client type option is set to "Confidential" as the client application using this configuration is capable of keeping its private key secret.

Import certificate

Alias

Certificate file

 Drop a file or [select one...](#)

File formats supported: .pem, .cer, .crt, .der


Through the “Certificate” option the public key counterpart of the private key of the client application can be uploaded and provided an alias. The alias is the `kid` or Key Id used in the JWT in paragraph 3.5.1. IDCS uses the alias/key id to be able to verify using the correct public key that requests for access tokens using the JWT signed by the client applications private key are in fact signed with the private key that only the client application should have access to.

Client IP address

☐ Anywhere ☒ Restrict by network perimeter

Enter or select one or more network perimeters.

Token issuance policy

Authorized resources 

☐ All ☒ Specific

☒ Add resources

Add resources if you want your application to access the APIs of other applications.

Resources

Add scope Remove


<input type="checkbox"/>	Resource	Protected	Scope
<input type="checkbox"/>	Test	No	hslapi:full

0 selected Showing 1 item

If able, it is advisable to restrict access to the IDCS application through the “Client IP Address” option by entering one or more network perimeters. Ask your network engineers for help setting this up.

Lastly, tokens issued by IDCS on behalf of this configuration should be restricted to specifically authorized resources. The resources previously configured must be added here.

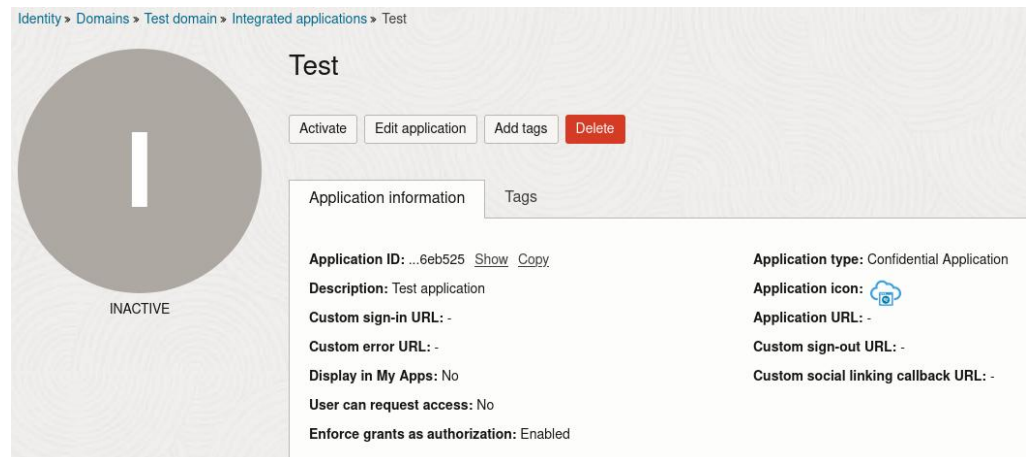
Add scope

 Search by application name, description, or tags.

<input type="checkbox"/>	Name	Description
<input type="checkbox"/>	Test	Test application

Note that upon going through the workflow and configuring the client configuration for the first time, the “Resource server configuration” that was previously set up hasn’t yet been saved, so it won’t show up in the “Add scope” window. Press next and on the “Web tier policy” window press previous. The scopes configured in the resource server configuration are now saved and can be added through the “Add scope” window.

Setting up a Web tier policy and/or app gateway in OCI is considered out of scope here. Reference the OCI documentation for more information on this component through: <https://docs.oracle.com/en-us/iaas/Content/Identity/applications/add-confidential-application.htm>.



The configuration of the confidential application in IDCS is now complete. The application can be activated after pressing finish.

With IDCS set up, the signed JWT created in the previous section can be used to retrieve an access token. To find out where the JWT should be sent to, reference the *well-known* endpoint. Every application registration in IDCS is provided a publicly accessible endpoint that serves its OpenID configuration document. To determine the URI of the configuration document's endpoint for your application, append the *well-known OpenID configuration* path to your applications registration's URL:
`https://idcs-abcdef123456ghijk7890.identity.oraclecloud.com/.well-known/openid-configuration`

The signed JWT is sent via an HTTP POST request to the activated IDCS application, e.g.

```
curl --header 'Accept: application/json' --header 'Content-Type: application/x-www-form-urlencoded' --request POST https://idcs-abcdef123456ghijk7890.identity.oraclecloud.com/oauth2/v1/token?grant_type=client_credentials&scope=<SCOPE>&client_assertion_type=urn%3Aietf%3Aparams%3Aoauth%3Aclient-assertion-type%3Ajwt-bearer&client_assertion=<SIGNED JWT>
```

SCOPE: specific scope (of access) that the client wants to receive an access token for. In the case of IDCS this is a combination of the primary audience and the specific scope access is requested for. Based on the configuration outlined above that would be 'hslapi:full'.

On a successful request an access token should be returned. The access token can be used as a bearer token for requests to the OHS instance and indirectly the HSL services, e.g.

```
curl -s -H 'Accept: application/json; Charset=utf-8' -H 'Accept-Language: en-US' -H 'Authorization: Bearer eyJ4NXQjUzI[... omitted for brevity ...]' --get 'https://example.com:7580/HSL_CLA/cla/v1/vervoerDeclaratie/100'
```

3.5.3.1 Key management and rotation

Care should be taken to protect the private key used by the client application. As access to this key constitutes access to protected resources. The resources a key provides access to, should be tailored to the application and should be as narrow in

scope as possible. A way to achieve that for any given application is by setting up and configuring a specific confidential application in IDCS (with its own private key and scope of access) for that application.

In addition, a key needs to be rotated periodically as part of a healthy security posture. Factors that should be considered when defining a key management policy (and specifically a key rotation period) are considered out of scope for this document. For a more in-depth discussion regarding key management see the following report by the US National Institute of Standards and Technology (NIST):

<https://doi.org/10.6028/NIST.SP.800-57pt1r5>. With regards to the key rotation period (also known as the cryptoperiod), chapter 5.3 of the report describes 1 to 2 years per rotation to be acceptable.

3.5.4 OHS - mod_auth_openidc installation and configuration

The next step is to configure OHS to act as an OAuth2.0 Resource Server for HSL services. In this example we will use the OHS component as it is installed in combination with the Oracle Forms product. Note that without OHS serving as a reverse proxy in front of the HSL services, the services are left unprotected! It is vitally important to have a reverse proxy that includes OAuth2 token verification, like the setup outlined in this paragraph, in front of the HSL webservices. The HSL services will only execute rudimentary checks on incoming requests to verify they are forwarded by a proxy-like application.

The apache module mod_auth_openidc should be installed on the OHI BO application tier. It is available from the ol8_appstream dnf/yum repository. To install it, login as root and run: `dnf install mod_auth_openidc`

After a successful installation locate and record the location of the installed module. The module needs to be registered in the OHS configuration for OHS to be able to load it as a part of its startup. Typically, the module can be found using: `rpm -ql mod_auth_openidc | grep mod_auth_openidc.so`

The module might be installed at something like:
`/usr/lib64/httpd/modules/mod_auth_openidc.so`

Next

Login as oracle to the OHI BO Application Tier and go to the OHS moduleconf directory:

```
oraset DOMFRS12214
(or use ". ozg_init.env" to set the environment variables for the WLS domain)
cd
$DOMAIN_HOME/config/fmwconfig/components/OHS/instances/ohs12214/moduleconf
```

Create or edit an OHS configuration file, ending with .conf, in this moduleconf directory as these are normally all included by the OHS httpd.conf file. Name it e.g. OHIBO.HSL.conf:

```
LoadModule auth_openidc_module
/usr/lib64/httpd/modules/mod_auth_openidc.so
<IfModule auth_openidc_module>

    OIDCOAuthVerifyJwksUri https://idcs- idcs-
    abcdef123456ghijk7890.identity.oraclecloud.com/admin/v1/Signing
    Cert/jwk
    <LocationMatch "^/HSL" >
        AuthType oauth20
        <RequireAll>
            Require valid-user
            Require claim "scope:api:full"
```

```

        Require claim aud:hsl
    </RequireAll>

    SetHandler weblogic-handler
    WebLogicHost localhost
    WebLogicPort 9522
    SecureProxy ON
    WLSSLWallet
    "${ORACLE_INSTANCE}/config/fmwconfig/components/${COMPONENT_TYPE}
    E)/instances/${COMPONENT_NAME}/keystores/default"
    WLProxySSL ON
    </LocationMatch>
</IfModule>

```

This configuration manages a couple of things. It specifies where the `mod_auth_openidc` module can obtain the public key counterpart of the key IDCS used to sign access tokens through the `'OIDCAuthVerifyJwksUri'` option. This key is obtained the first time a request hits a location protected by OHS, in this case all locations starting with `'/HSL'`. The signing key is cached for a configurable amount of time, which is an hour by default. Incoming requests that send along JWT's will be verified to have been signed by IDCS are additionally required to contain a configurable set of claims. Here the scope and audience claim are used as an example.

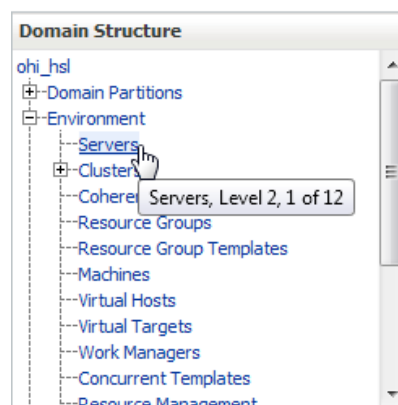
Through standard Apache Require-directives access can be managed to resources. See <https://httpd.apache.org/docs/2.4/howto/access.html> for more information.

3.5.4.1 `mod_auth_openidc` and `mod_oauth2`

In an upstream version of the `mod_auth_openidc` module the developer has split-off the OAuth2.0 Resource Server functionality into its own module called `mod_oauth2`. This module might in the future be made available via the OL dnf/yum repositories. It offers identical functionality to what is currently provided by the 2.4.9.4-5 version of `mod_auth_openidc` in the OL8 and OL9 dnf/yum repositories with regards to an OAuth2.0 Resource Server implementation and can be used interchangeably.

3.5.5 WLS - enable proxy plug-in

For WebLogic to be able to proxy requests back and forth to OHS the following configuration is required to be executed for all managed servers that will be used to serve requests for HSL resources. Login to the WebLogic console and navigate to the relevant managed server from the 'Servers' link in the sidebar.



From the configuration page of the managed server navigate to the 'advanced' section:

<input checked="" type="checkbox"/> Listen Port Enabled	Specifies whether this server can be reached through the default plain-text (non-SSL) listen port. More Info...
Listen Port: <input type="text" value="8522"/>	The default TCP port that this server uses to listen for regular (non-SSL) incoming connections. More Info...
<input checked="" type="checkbox"/> SSL Listen Port Enabled	Indicates whether the server can be reached through the default SSL listen port. More Info...
SSL Listen Port: <input type="text" value="9522"/>	The TCP/IP port at which this server listens for SSL connection requests. More Info...
<input type="checkbox"/> Client Cert Proxy Enabled	Specifies whether the HttpClusterServlet proxies the client certificate in a special header. More Info...
Java Compiler: <input type="text" value="javac"/>	The Java compiler to use for all applications hosted on this server that need to compile Java code. More Info...
Diagnostic Volume: <input type="text" value="Low"/>	Specifies the volume of diagnostic data that is automatically produced by WebLogic Server at run time. Note that the WLDF diagnostic volume setting does not affect explicitly configured diagnostic modules. For example, this controls the volume of events generated for Flight Recorder. More Info...
Default Datasource: <input type="text"/>	The JNDI name of a system resource data source used to override the default datasource. More Info...
<hr/> Advanced <hr/>	
Virtual Machine Name: <input type="text" value="DOMSVL122119_MS_SVL12211"/>	When WLS is running on JRVE, this specifies the name of the virtual machine running this server. More Info...
WebLogic Plug-In Enabled: <input type="text" value="yes"/>	Specifies whether this server uses the proprietary WL-Proxy-Client-IP header. More Info...
<input type="checkbox"/> Classpath Servlet Disabled	The ClasspathServlet will serve any class file in the classpath and is registered by default in every Web application (including management). It does not need to be turned on for many applications though, and represents a security hole if

Next, make sure the ‘WebLogic Plug-In Enabled’ option is set to yes.

3.5.6 WLS – OHS as the only means of accessing HSL services

As the access to the HSL webservices is secured through OHS, it is vitally important that there are no other ways of accessing the HSL webservices without going through OHS.

If OHS and the WLS managed server should run on the same host the following configuration can be used to allow for the WLS managed server to be only accessible locally on that host. This is achieved through setting the “Listen Address” in the configuration of the managed server to localhost.

Name:	ms_ohi_hsl
Template:	(No value specified) Change
Machine:	localmachine
Cluster:	(Stand-Alone)
Listen Address:	<input type="text" value="localhost"/>

If OHS (or another application serving the same purpose) and the HSL services don’t reside on the same host, access to the HSL services should still be routed via the reverse proxy to protect the services. Whether this could be setup transparently via firewall rules or as part of a cloud-based solution is considered out-of-scope for this manual. Include your network administrator in this conversation.

3.5.7 HSL service configuration

The HSL services are configured through the `hsl.properties` file. Chapter 5 describes the possible configuration properties the file might contain in more detail. For the purposes of the OAuth2.0 setup it should be noted that the following properties must be present in the configuration file:

- `hsl.<app>.authorization` (or when this property isn't set the fallback `hsl.authorization` property). The property must have the value `TOKEN`.
- `hsl.<app>.allowedorigins` (or when this property isn't set the fallback `hsl.allowedorigins` property). This property must contain the host and port combination of the OHS reverse proxy, e.g. `https://example.com:7580`

3.5.8 Troubleshooting OHS and `mod_auth_openidc`

To troubleshoot OHS the following statements can be added to the HSL OHS configuration (`httpd.conf`) to enable debug logging:

```
LogLevel info auth_openidc:debug weblogic:debug
```

The `LogLevel`-directive sets a default log level of `info` for all log messages except the `mod_auth_openidc` module and `weblogic`. They get a level of `debug`.

3.5.9 OHS log message - `nzos_Handshake: mod_wl failed`

If the OHS log should contain something like the following messages:

```
[2000-01-01T12:01:22.1000+02:00] [OHS] [ERROR:32] [OH999999]
[weblogic] [host_id: example.com] [host_addr: 100.100.100.1]
[pid: 1059400] [tid : 140178737800960] [user: oracle] [ecid:
0067NOLxtkk9d_eUtaXvWH0042d8000002] [rid: 0] [VirtualHost:
main] nzos_Handshake: mod_wl failed (29024)
[2000-01-01T12:01:22.2000+02:00] [OHS] [ERROR:32] [OH999999]
[weblogic] [host_id: example.com] [host_addr: 100.100.100.1]
[pid: 1059400] [tid : 140178737800960] [user: oracle] [ecid:
0067NOLxtkk9d_eUtaXvWH0042d8000002] [rid: 0] [VirtualHost:
main] wl_ssl_open : SSL Handshake failed onerror : Success,
error : 29024, status : 2
[2000-01-01T12:01:22.3000+02:00] [OHS] [ERROR:32] [OH999999]
[weblogic] [client_id: 10.10.10.1] [host_id: example.com]
[host_addr: 100.100.100.1] [pid: 1059400] [tid:
140178737800960] [user: oracle] [ecid:
0067NOLxtkk9d_eUtaXvWH0042d8000002] [rid: 0] [VirtualHost:
example.com:7580] <0067NOLxtkk9d_eUtaXvWH0042d8000002>
*****Exception type [NO_RESOURCES] (Could not open secure
connection) raised at line 1829 of URL.cpp
[2000-01-01T12:01:22.4000+02:00] [OHS] [ERROR:32] [OH999999]
[weblogic] [client_id: 10.10.10.1] [host_id: example.com]
[host_addr: 100.100.100.1] [pid: 1059400] [tid:
140178737800960] [user: oracle] [ecid:
0067NOLxtkk9d_eUtaXvWH0042d8000002] [rid: 0] [VirtualHost:
example.com:7580] Trying GET
/OHI/EXAMPLE/HSL_CLA/cla/v1/vervoerDeclaratie/1000 at backend
host '::1/9522; got exception 'NO_RESOURCES: [os error=0, line
1829 of URL.cpp]: Could not open secure connection'
```

and if OHS is configured for an SSL connection to WLS refer to Doc ID 1665711.1 on My Oracle Support for more information and a likely fix.

3.6 (Re)deployment of the HSL Application

The HSL web applications are packaged in a single archive named 'HSLBOWS.ear'. This EAR file must be deployed to WLS.

The EAR file containing the HSL applications resides in the \$OZG_BASE/java directory on the application server containing the OHI Back Office software release.

You can copy this to another location if required.

Ensure that the .ear file is located on the WLS Admin Server host (this is the server running the WLS Administration Console).

Note that you cannot use an older EAR file with a newer OHI Back Office release and vice versa.

The following scenarios are discussed:

- Deploy to a single Managed Server
- Deploy to multiple Managed Servers
- Deploy to a WebLogic cluster
- Deploy for DTAP (development, test, acceptance, production)

3.6.1 Deploy to a single Managed Server

3.6.1.1 Deploy EAR file

In the Domain Structure pane, select the Deployments branch. This will show the applications that have already been deployed.

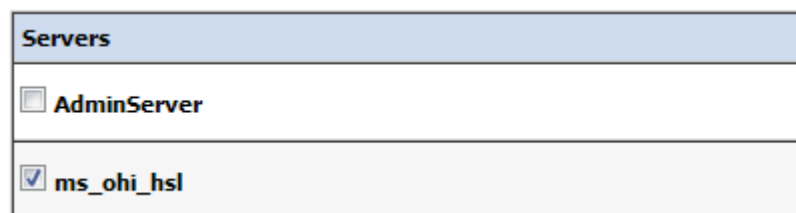
If you want to shorten this list, use 'Customize this table' to exclude the libraries.

Select 'Lock & Edit' to enter editing mode, this will enable the 'Install' button which you need to use next.

In the new window, locate the .ear file on the WLS server, select one and press 'Next':



Select 'Install this deployment as an application', press 'Next' and select the target(s) for deployment. In the example below only Managed Server ms_ohi_hsl is chosen.



Press 'Next' and decide on a deployment name and select "Custom Roles and Policies" as the security model to use with the application. At this point the version of the EAR file is also shown.

Install Application Assistant

Back Next Finish Cancel

Optional Settings

You can modify these settings or accept the defaults.

* Indicates required fields

General

What do you want to name this deployment?

* Name:

HSLBOWS

Archive Version:

v1

Deployment Plan Version:

Security

What security model do you want to use with this application?

☐ DD Only: Use only roles and policies that are defined in the deployment descriptors.

☐ Custom Roles: Use roles that are defined in the Administration Console; use policies that are defined in the deployment descriptor.

☒ Custom Roles and Policies: Use only roles and policies that are defined in the Administration Console.

☐ Advanced: Use a custom model that you have configured on the realm's configuration page.

Source Accessibility

How should the source files be made accessible?

Regarding source accessibility, select 'Copy this application....' if you want to remove the EAR file from its current location.

Finish the configuration.

Beware that – in Production mode - you need to Activate your changes in order to enable the web services. At that moment the deployment will show status 'Prepared'.

By selecting the deployment in the Control tab and pressing Start → Servicing all requests the State will change to 'Active' (assuming your Managed Server is in 'Running' state, the hsl.properties file has been specified and can be found).

3.6.1.2 Specify configuration file

Before using the web services, implement the following actions as described below. These actions have to be executed only once. There is no need to repeat them when you update a deployment or delete and install it again.

Add a Server Start argument by adding a line to the file \$DOMAIN_HOME/bin/setUserOverrides.sh created earlier. Add the line to the part for the HSL server, as indicated below:

```
# specify additional java command line options for specific servers
if [ "${SERVER_NAME}" = "ms_ohi_hsl" ]
then
    # add settings for HSL
    # Custom Setting for ms_ohi_hsl to set debug level for SSL
    JAVA_OPTIONS="-Dweblogic.wsee.security.debug="true" ${JAVA_OPTIONS}"
    # Set location for HSL properties file
    JAVA_OPTIONS="-Dhsl.properties="/u01/app/oracle/product/OHI/vohi/hsl.properties" ${JAVA_OPTIONS}"
fi
export JAVA_OPTIONS
```

- Make sure to keep the parts with \${JAVA_OPTIONS} on the same line

This example uses a properties file with the name hsl.properties which is located in the \$OZG_BASE folder of your OHI Back Office application server environment, but you can specify any name and location.

The contents of this file are discussed in Chapter 5 "Configuration files for HSL services").

When completed, (re)start the Managed Server. This can be done from the WebLogic Admin console, or from the command line with the following commands;

```
cd $DOMAIN_HOME/bin
./startManagedWebLogic.sh ms_ohi_hsl http://localhost:7061
```

The example above contains the Managed Server's name as first parameter and the listen address of the Admin Server of the domain as second parameter

Check in the <ManagedServer>.log file and/or in the <ManagedServer>.out file in \$DOMAIN_HOME/servers/<ManagedServer>/logs directory of your Managed Server whether the command line contains the arguments as specified above.

NOTE: If the file specified by hsl.properties cannot be read, messages as below will show up in the WebLogic console and in the <ManagedServer>.log file:

```
java.lang.RuntimeException: Property file could not be loaded.
...
java.io.FileNotFoundException:
/u01/domains/OHIDEV01/conf/psl.properties (No such file or directory)
```

3.6.2 Deploy to multiple Managed Servers

You may deploy the application to more than one target.

Example: if you choose to target the application to Managed Servers MS1 and MS2, the application will be available on separate end points. The URLs of these end points will only differ in port number.

If you choose this scenario, be aware that each Managed Server should have different Server Start argument values (hsl.properties).

3.6.3 Deploy to WebLogic cluster

You may deploy the application on all the Managed Servers of a cluster. This may be needed for better scalability. Be aware to use some form of load balancing to allow the use of a single endpoint by the end users.

The best way to implement this type of deployment depends on your specific situation.

If you are planning a load balanced environment with multiple Managed Servers in a WebLogic cluster it is vital that the configuration of every Managed Server is aligned with the others.

3.6.4 Deploy for multiple environments (DTAP)

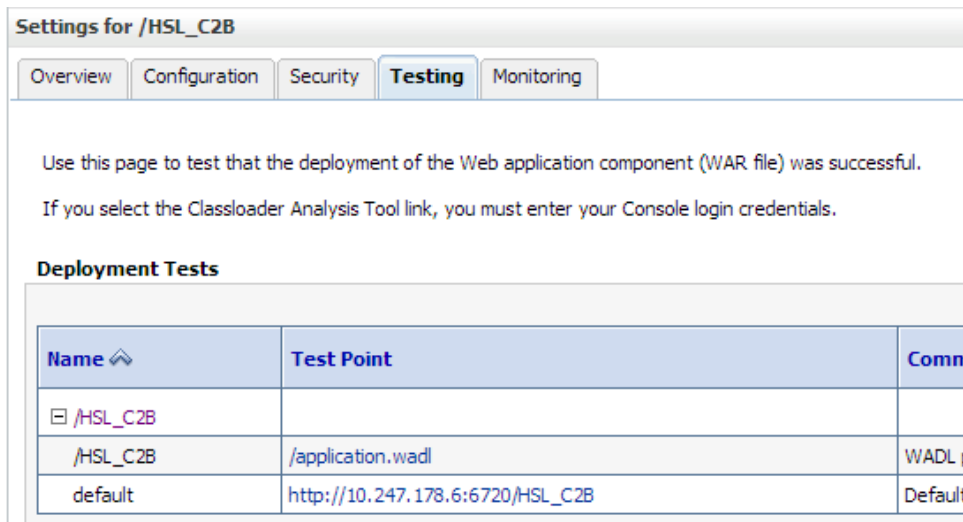
If you use several OHI-related environments to support the various DTAP (Develop-Test-Accept-Production) stages, you may want to have different versions of the HSL application running at the same time.

To implement this, you need to:

- Create at least one Managed Server for each of the DTAP stages.
- Create a data source for each OHI Back Office database and deploy that data source only to the corresponding Managed Server(s).
- Create an hsl.properties file for each Managed Server.
- Configure each Managed Server to start up with the appropriate hsl.properties.
- Deploy the appropriate version of the HSL application to its corresponding Managed Server(s) and give it a unique deployment name to identify its deployment.

3.6.5 Validate deployment

Be aware that the URLs displayed in the Admin Console cannot be used to test or validate the deployment.



Settings for /HSL_C2B

Overview Configuration Security **Testing** Monitoring

Use this page to test that the deployment of the Web application component (WAR file) was successful.

If you select the Classloader Analysis Tool link, you must enter your Console login credentials.

Deployment Tests

Name	Test Point	Comments
/HSL_C2B		
/HSL_C2B	/application.wadl	WADL
default	http://10.247.178.6:6720/HSL_C2B	Default

Also note that, even with the correct URLs, you cannot use a browser to test, because the request needs to include a Request Header "Accept:application/json".

You may get no response, or a reply like this:

```
<exceptionResponse>
<internalStatus>Not Acceptable</internalStatus>
<message>Wrong value for Accept</message>
</exceptionResponse>
```

Instead, use curl, as described in chapter 4 "Deployment validation" or SoapUI, as described in Appendix D "Testing with SoapUI".

3.7 Additional Security Aspects

Since HSL services provide an additional channel to access OHI Back Office data, you must prevent unauthorized use of the HSL applications.

Please consult the 'Oracle Health Insurance Security Aspects' guide for more information about OHI Back Office security aspects.

In order to prevent the exposure of sensitive data or unauthorized changes to the OHI Back Office data, access of the HSL applications should be limited to trusted systems and interfaces. When access to the HSL applications is secured through OHS (as it is for Single Sign-On using OpenID Connect), it is vitally important that there are no other ways of accessing the HSL webservices without going through OHS.

Finally, note that it is your responsibility as an administrator to secure the HSL services within your organization.

3.7.1 Cross-Site scripting protection

As a measure to prevent against potential cross site scripting attacks you can limit the callers of the REST services by specifying a set of trusted origins. The set of origins can be added as a space-separated list to the property 'allowedorigins'.

4 Deployment validation

Especially when deploying a HSL application for the first time, it makes sense to validate that the HSL application is in working order.

Before you begin, check in the WLS Admin Console that the deployment status of the HSL application is active.

The following validation tests can be performed by the administrator:

- getDatabaseInfo operation
- Get Runtime Swagger definition

The getDatabaseInfo operation requires a JDBC connection between the HSL application and the OHI BO database, so you are not only testing the deployment itself but also the integration between the HSL application and the OHI database.

If a validation test fails see the paragraph *'Troubleshooting'* below to find and resolve the problem.

The validation tests described below assume that you test with 'curl'.

4.1 Testing with Curl

An operation of the HSL application can be invoked with many HTTP client tools. One of these tools is curl, which is present on any Linux/Unix server. Assuming that you have terminal access to the Linux server running the reverse proxy in front of the HSL services, curl is a good tool to run the deployment validation tests.

Use 'curl --version' to check the curl version. Ensure that you are running curl 7.35.0 or higher as that supports the required SSL implementation.

First an access token needs to be retrieved from an identity provider. Continuing with the setup outlined in chapter 3, we'll use IDCS as an example.

```
curl --header 'Accept: application/json' --header 'Content-Type: application/x-www-form-urlencoded' --request POST https://idcs-250703492t3452395h234985236eb5525.identity.oraclecloud.com/oauth2/v1/token?grant_type=client_credentials&scope=hslapi%3Afull&client_assertion_type=urn%3Aietf%3Aparams%3Aoauth%3Aclient-assertion-type%3Ajwt-bearer&client_assertion=<SIGNED JWT>
```

Explanation of the used options and placeholders:

- --header 'Accept: application/json'
We'd like IDCS to send the access token and accompanying information back in json format.
- --header 'Content-Type: application/x-www-form-urlencoded'
This header specifies the way in which the information sent as part of the IDCS url has been formatted.
- --request POST
add HTTP POST verb

If, or rather when, IDCS accepts the signed JWT, the access token is sent as part of a json payload that includes metadata about the requested access and token, e.g. the expiry time of the access token or the scope of access. The access token itself is contained in the 'access_token' field of the payload. We'll use this token in the upcoming curl requests in this chapter.

A typical invocation of an HSL operation using curl would look like this

```
curl --dump-header - --request <verb> --insecure --header "Accept:application/json" --header "Authorization: Bearer <access token>" <url>
```

Explanation of the used options and placeholders:

- `--dump-header -`
Dump response headers to stdout
- `--request <verb>`
add HTTP verb (GET/PUT/POST/PATCH/DELETE)
- `--insecure`
Allow curl to run HTTP requests without checking SSL certificates.
- `--header "Accept:application/json"`
Add request header to require a response in application/json format.
This is required for every HSL operation.
- `--user <user>`
The username of the WLS user used for Basic Authentication.
The <user> must refer to an existing WLS user.
Note that curl will prompt for a password if it is not given on the command line.
- `<access token>`
Access token retrieved from an identity provider.
- `<url>`
The path to the HSL operation.

The url format is <https://server:port/application/path> where

server	This must be one of the managed servers protected by a reverse proxy that includes a OAuth2 resource server implementation, like the OHS setup as specified in chapter 3 of this manual. In addition, the managed server must be listed in the WLS console as an active target for the HSL application.
port	The SSL port of the reverse proxy running the HSL application.
application	This is the name of the HSL application as listed on the WLS deployment page. For example, HSL_POL, HSL_REL, HSL_CLA or HSL_C2B.
path	The path to this operation. Each operation is uniquely identified by a <path> + <verb> combination. Path examples: '/dbinfo' or 'api/swagger.json'

In the following example, information on the database connection is requested from the HSL_POL application on the local WLS host running a managed server accessed via an OHS instance that serves as a reverse proxy at SSL port 7094:

```
curl --dump-header - --insecure --header "Authorization: Bearer yJ4NXQjUzI1NiI6I1RyYmlwdUM0YjJGbzBBcXJ6dm9IVGpZRLhLQX...[omitted for brevity]" --header "Accept:application/json" https://localhost:7094/HSL_POL/dbinfo
```

4.2 getDatabaseInfo

This operation provides information about the database connection between the HSL application and the OHI BO database.

If you are familiar with OHI BO's SVL services, note that the getDatabaseInfo operation is comparable with the 'isAlive' operation implemented in every SVL service.

This operation requires a working database connection and invokes the PL/SQL implementation package specific to the HSL application.

The `getDatabaseInfo` operation is invoked through

```
https://server:port/application/dbinfo
```

In the following example the `getDatabaseInfo` of the HSL_POL application accessed via an OHS instance that serves as a reverse proxy on SSL port 7094 in front of our local WLS host is invoked through `curl`.

```
curl --dump-header - --insecure --header "Authorization: Bearer yJ4NXQjUzI1NiI6IlRyYmlwdUM0YjJGbzBBXJ6dm9IVGpZRLhLQX...[omitted for brevity]" --header "Accept:application/json" https://localhost:7094/HSL_POL/dbinfo
```

The output is a JSON object with information about the database connection and the PL/SQL package implementing the HSL application in the OHI BO database:

```
{
  "basePath": "https://localhost:7094/HSL_POL/pol",
  "database": "BDDEV1722",
  "instance": "CDB02",
  "jndiName": "HSL_BDDEV1722",
  "plsqlPackage": "hsl_pol_sp_pck $Revision: 4.21 $",
  "user": "HSL_USER",
  "userContext": "MANAGER"
}
```

4.3 verifyInterfaceVersion

This operation checks whether the deployed version at the application server and the corresponding objects as installed in the database do match with each other.

The `verifyInterfaceVersion` operation is invoked through

```
https://server:port/application/api/verifyInterfaceVersion
```

In the example below the operation is called for application HSL_CLA:

```
curl --dump-header - --insecure --header "Authorization: Bearer yJ4NXQjUzI1NiI6IlRyYmlwdUM0YjJGbzBBXJ6dm9IVGpZRLhLQX...[omitted for brevity]" --header "Accept:application/json" https://localhost:7410/HSL_CLA/api/verifyInterfaceVersion
```

The output is a JSON object like:

```
{
  "items":
    [
      { "name": "plsqlSwaggerRevision", "value": "4.47.1.1" },
      { "name": "warSwaggerRevision", "value": "4.47.1.1" },
      { "name": "match", "value": "true" }
    ]
}
```

It states whether both versions do match (true) or not (false). They should match and if not, you should find out what went wrong, is the problem at the database side of the application server deployment side.

4.4 Get Runtime Swagger definition

Each HSL application has an operation to generate a Swagger definition which documents the operations and the objects of the HSL service.

This documentation is not only useful to client application developers but can also be used as the basis for code generation.

The Swagger 2.0 and OpenApi 3.1 standards are supported by many leading software vendors including Oracle. They are documented on <https://www.openapis.org>.

The Swagger 2.0 definition can be retrieved as follows:

- `https://server:port/application/api/swagger.json`
Returns the Swagger definition in JSON format
- `https://server:port/application/api/swagger`
Returns the Swagger definition in JSON format
- `https://server:port/application/api/swagger.yaml`
Returns the Swagger definition in YAML format

The OpenApi 3.1 definition can be retrieved as follows:

- `https://server:port/application/api/openapi.json`
Returns the OpenApi definition in JSON format
- `https://server:port/application/api/openapi`
Returns the OpenApi definition in JSON format
- `https://server:port/application/api/openapi.yaml`
Returns the OpenApi definition in YAML format

In the following example we retrieve the runtime Swagger definition of the POL service:

```
curl --dump-header - --insecure --header "Authorization: Bearer
yJ4NXQjUzI1NiI6I1RyYmlwdUM0YjJGbzBBXJ6dm9IVGpZRLhLQX...[omitte
d for brevity]" --header "Accept:application/json"
https://localhost:7094/HSL_POL/api/swagger.json
```

The output is a JSON object containing the Swagger definition of the deployed HSL application.

For retrieving the YAML format beware that you specify x-yaml in the -H argument:

```
curl --dump-header - --insecure --header "Authorization: Bearer
yJ4NXQjUzI1NiI6I1RyYmlwdUM0YjJGbzBBXJ6dm9IVGpZRLhLQX...[omitte
d for brevity]" --header "Accept:application/json"
https://localhost:7094/HSL_POL/api/swagger.yaml
```

4.4.1 Saving the Swagger definition to a file

Curl can also write the response of an invocation to a file, using the '`--output <filename>`' option

In the example below we save the online Swagger definition of the POL service running on localhost at SSL port 7094 to a file called 'saved_swagger.json':

```
curl --dump-header - --insecure --header "Authorization: Bearer
yJ4NXQjUzI1NiI6I1RyYmlwdUM0YjJGbzBBXJ6dm9IVGpZRLhLQX...[omitte
d for brevity]" --header "Accept:application/json" --output
"saved_swagger.json"
https://localhost:7094/HSL_POL/api/swagger.yaml
```

4.5 Troubleshooting

If the deployment validation fails, first check that the following items have been configured correctly:

- **hsl.properties configuration file (see next chapter)**
This sets the data source for your HSL application.
- **hsl.properties Server Start argument**
This parameter tells the HSL application where to find the hsl.properties file. If the hsl.properties parameter refers to a non-existing file, the HSL application cannot be started by WLS and its state will be 'Failed'.
- **Data source configured in hsl.properties configuration file**
This data source is used to create the JDBC connection between the HSL application and the OHI BO database

- **HSL database account**
This account in the OHI BO database has access to the PL/SQL components used by the HSL application.
- **The configuration of the reverse proxy (OHS in the context of this manual)**
See paragraph 3.5.7 for more information on how to enable debug output for OHS.

Troubleshooting tips:

- Edit the hsl.properties file and set 'developermode=true' for your HSL application.
- Restart the managed server for your application.
Error messages will now be included in the output (normally they are suppressed from the output).
- Reproduce the request with curl. Be sure to use the 'dumpheader' option (--dump-header) to dump the response headers.

The table below may help you to pinpoint the problem:

HTTP	Message	Problem	Action
	WLS Console: java.lang.RuntimeException: Property file could not be loaded.	The configuration file could not be loaded when starting the HSL application.	Restart application after ensuring that the file referred to by the 'hsl.properties' Server Start argument exists and is readable.
500	Unable to resolve 'xyz'	The jndiname property for this application does not refer to a valid data source.	Examine hsl.properties and ensure that the application's jndiname points to a valid datasource.
500	ORA-06550:line 1..	The required HSL objects cannot be accessed by the database user related to the data source.	Verify that the data source points to a HSL database account. Verify that the HSL database account has access to the HSL objects (see 'Creating a HSL database account' above).
401	Missing Authentication Scheme	No authorization header has been supplied as part of the request	Add an authorization header that includes the access token that was retrieved from the identity provider to the request.
401	Unauthorized or Forbidden	Invalid or expired access token	Add a valid
422	Functional Error	A syntactically correct request could not be completed due to a functional error or business rule violation.	Adapt the request or the database situation so the cause of the failure is prevented.
412	Precondition Failed	Another user already updated these data.	Refresh data and try again.

5 Configuration Files for HSL services

In the previous chapter a properties file was referenced in the web service application server deployment description. This chapter provides more information about that file.

5.1 Properties file templates

With the OHI Back Office release installation, a properties file template called `hsl.properties.template` is distributed to the `$OZG_BASE/conf/Back-Office` directory. Each OHI Back Office release may overwrite this template with an updated version. The `hsl.properties.template` can be used as an example to create your own `hsl.properties` file (for example in `$OZG_BASE/conf`).

Please note that all values are examples. You should consider if these values are appropriate for your installation and replace them with your own values if needed. Values indicated with `<<SOME_NAME>>` in the templates are placeholders and must be replaced. This notation is intended to make scripted deployment easier.

Also make sure not to set log level to FINE, FINER or FINEST in production mode, use SEVERE or WARNING instead.

5.2 Back Office HSL properties file

The location of the Back Office properties file for the HSL services is specified as a Server Start argument for a Managed Server with:

```
-Dhsl.properties=<filename>
```

This file contains properties to configure the various deployed HSL applications:

- Datasource to connect the HSL application to the OHI database.
- Default OHI employee (Dutch: functionaris) on whose behalf a request is executed. This can (should?) be generic name (e.g. `HSL_FUNC_USER`) without a corresponding database account. It is only used for the auditing columns in the OHI BO tables.
- Logging configuration.
Note that HSL services use Java Util Logging (JUL). You may find more information about the configuration options of JUL on the internet.

In the subsection below, the properties are described in more detail, where “`<app>`” is a placeholder for the service name, like “`rel`”, “`pol`” or “`polis`” (see the properties file template for more examples).

5.2.1 `hsl.<app>.jndiname/hsl.jndiname`

The JNDI name of the data source to connect this HSL application to the OHI database is configured in `hsl.<app>.jndiname`. If not set, this value defaults to the value of the `hsl.jndiname` property.

There is no default value if `hsl.jndiname` is not set, which will result in an error.

Setting `hsl.<app>.jndiname` allows you to use different data sources for different HSL applications. A different data source may connect to the same database using a different account, or to a different database altogether.

As an example, you may want to use `HSL_PRD` for the REL service and `HSL_RO` (“read only”) for the POL service to avoid changes to the policies in the production database.

Note that you must use `//` for each forward slash in the JNDI name.

Example:

```
hsl.jndiname=jdbc//HSL_BDDEV1622
```

5.2.2 hsl.<app>.authorization/hsl.authorization

By default, HSL service operations require OAUTH2 authentication. The setting must be set to TOKEN for this form of authentication to take effect.

As a fallback, Basic authentication is provided as a minimal policy to reduce the risk of unauthorized access and network sniffing. Basic authentication requires HTTPS communication and providing a WebLogic username/password with each call.

To enforce basic authentication, the value of `hsl.<app>.authorization` or the default `hsl.authorization` property, should be set to BASIC.

5.2.3 hsl.<app>.usercontext/hsl.usercontext

The OHI employee (Dutch: functionaris) on whose behalf a request is executed.

Setting `hsl.<app>.usercontext` allows you to set an OHI employee per HSL application. If not set, this value defaults to the value of the `hsl.usercontext` property.

The user context is inserted in the call context which is included in the call to the PL/SQL implementation procedure. Note that the PL/SQL implementation may set a different OHI employee based on the request data.

This user context determines the user identity that is used for performing and also logging changes to the data. The value must be the Oracle username of a registered BackOffice user (in Dutch: "Functionaris").

This user context will also be used to determine the access to the financial units when applicable (in Dutch: "Bedrijfstoegang").

Notes:

- the usercontext must always be set, even if `hsl.<app>.usercontext.control` is set to TOKEN
- the user context from the `hsl.properties` file may be overwritten in the SQL at the HSL application level, for the specific service or even operation. This should be documented in the functional specification(s) which apply to the given HSL application.
- This value should not match the technical database account (HSL_USER) used for the Data Source. HSL_USER should not be registered as a BackOffice user/employee.
- Conversely, the BackOffice user/employee should be a generic user without a database account. The "Oracle username" should not have a matching database account.
- Do not use the value "MANAGER". Records created and updated by HSL functionality should be recognizable as such. Using MANAGER will make it impossible to distinguish those records from records created or updated by batch procedures run by MANAGER and conversion scripts run during release installations, as these latter ones use hardcoded MANAGER.

Example:

```
hsl.usercontext=HSL_FUNC_USER
```

5.2.4 hsl.<app>.developermode/hsl.developermode

For security reasons, a response for a failed request contains minimal information so that potential hackers cannot use this information to misuse the HSL services. For functional errors, being either a BAD REQUEST or an OHI business rule violation, the functional error is returned. For all other errors, the error message will be replaced with 'Non-disclosed'. The original error message is written to the log file.

If `hsl.<app>.developermode` is set to 'true', the response for a failed request contains the original error message for all errors. If not set, this value defaults to the

value of the `hsl.developermode` property. If `hsl.developermode` is not set, `developermode` is disabled.

Note that in production mode it is strongly advised to delete the `hsl.developermode` and `hsl.<app>.developermode` property from the `hsl.properties` file.

See **Doc[2]** ('Error Handling') for the differences in error handling between developer mode and non-developer mode.

5.2.5 `hsl.<app>.allowedorigins/hsl.allowedorigins`

For security reasons, to provide protection from cross-site scripting attacks, you can limit the callers of the REST services by specifying a set of trusted origins. See also the separate paragraph with 'Additional Security Aspects' earlier in this document describing this property.

If `hsl.<app>.allowedorigins` is not set, this value defaults to the value of the `hsl.allowedorigins` property. If `hsl.allowedorigins` is not set, protection is not enabled.

Note that in production mode it is strongly advised to set explicitly trusted origins through this property.

An example:

```
hsl.allowedorigins=https://server.domain.com:7430, https://localhost:8000
```

5.2.6 `hsl.<app>.logdirectory, logfilesuffix, logfile / hsl.logdirectory, logfilesuffix, logfile`

`hsl.<app>.logdirectory / hsl.logdirectory`

`hsl.<app>.logfilesuffix / hsl.logfilesuffix`

`hsl.<app>.logfile hsl.logfile`

To minimize maintenance, the properties `hsl.logdirectory` and `hsl.logfilesuffix` can be used instead of the `hsl.<app>.logfile` property.

With `hsl.logdirectory`, a generic logdirectory can be defined. When there is no fully qualified logfile defined in `hsl.<app>.logfile`, the log file for the HSL application will be written to this location.

With `hsl.logfilesuffix` a generic logfile name suffix can be defined. When no `hsl.<app>.logfile` property is defined, it will default to "`hsl.<app>.log`", but when the suffix is set the logfile will default to "`hsl.<app>.<logfilesuffix>.log`".

When `hsl.logdirectory` is set, the `hsl.<app>.logfile` property no longer has to be set. The HSL application will be able to determine the log file name and location from `hsl.logdirectory` (and optionally `hsl.logfilesuffix`). This means that you will not have to add properties for new HSL applications.

These properties can also be set at app level: `hsl.<app>.logdirectory` and `hsl.<app>.logfilesuffix`, but that will not help to reduce the configuration effort.

`hsl.<app>.logfile` can only be set at `<app>` level.

Default values:

- `hsl.<app>.logdirectory`: no default value
- `hsl.<app>.logfilesuffix`: no default value
- `hsl.<app>.logfile`: "`hsl.<app>.log`"

Note:

- The directory referenced in `hsl.<app>.logdirectory` / `hsl.logdirectory` must exist and must be writable by the OS user running the WLS application server.
- The `hsl.<app>.logfile` property can be a filename only or a fully qualified path including a filename.

Examples:

- `hsl.logdirectory=/u01/log`
`hsl.logfilesuffix=BOPROD_AS1`
`hsl.<app>.logfile` is not set
This will result in logfiles for all HSL applications as follows:
/u01/log/hsl.<app>.BOPROD_AS1.log

This is the recommended setup.

- `hsl.logdirectory=/u01/log`
`hsl.logfilesuffix` is not set
`hsl.<app>.logfile` is not set

This will result in logfiles for all HSL applications as follows:
/u01/log/hsl.<app>.log

NOTE: do not use this setup for multiple OHI Environments and/or multiple Managed Servers (e.g. in a clustered environment) to log to the same directory. Locking issues will occur. Use different (sub) directories for each OHI Environment and Managed Server or use the `logfilesuffix` to create unique file names.

- `hsl.logdirectory` is not set
`hsl.logfilesuffix` is not set
`hsl.<app>.logfile=/u01/log/hsl.myownname.log`

This will result in logfiles per HSL applications as follows:
/u01/log/hsl.myownname.log

HSL applications that have no setting for `hsl.<app>.logfile` will try to create a logfile in the WLS domain directory (which is likely to cause issues):
/<WLS domain directory>/hsl.<app>.log

This setup is not recommended.

5.2.7 `hsl.<app>.loglevel` / `hsl.loglevel`

The severity level that determines which log messages should be written is controlled by `hsl.<app>.loglevel`. If not set, this value defaults to the value of the `hsl.loglevel` property. If the global property is also not set, the default value is SEVERE.

Logging levels: SEVERE, WARNING, INFO, CONFIG, FINE, FINER or FINEST.

The following logging levels are currently used: SEVERE, WARNING, FINER and FINEST. These levels are used as follows:

Level	Usage
SEVERE	Severe is used for technical error, where it is expected that the user cannot do anything to solve the issue and that a system administrator is needed to solve the issue.

WARNING	Warning is used for functional errors, where it is expected that the user can change something and try again. This log-level is used when an error occurs with one of the following HTTP response codes: <ul style="list-style-type: none"> • HTTP 400: Bad Request • HTTP 401: Unauthorized • HTTP 404: Not Found • HTTP 412: Optimistic lock • HTTP 422: OHI business rule violation • HTTP 423: Locked
FINER	Finer is used for tracking and tracing. This can be used when an unexpected error occurs, and tracing information is required for debugging purposes.
FINEST	Also used for tracking and tracing, but for the low-level objects that have a very high frequency.

The logging levels FINER and FINEST should only be used for debugging.

Example:

```
hsl.loglevel=SEVERE
```



WARNING: When setting the loglevel to FINER or FINEST this may lead to extensive log messages being recorded which can slow down the processing of service requests considerably. Response times measured while using such detailed log levels are clearly affected and should not be considered as representative for regular use.



WARNING: for production environments, set the loglevel to SEVERE or WARNING, to avoid logging of sensitive data.

5.2.8 hsl.<app>.loglimit/hsl.loglimit

The maximum size of the log file (in bytes) is controlled by `hsl.<app>.loglimit`. If not set, this value defaults to the value of the `hsl.loglimit` property. If the global property is also not set, the default value is 1000000 (1Mb).

When the size of the log file reaches this limit, the log is rolled over to the next log file.

Note that a value of 0 means 'unlimited'.

Example:

```
hsl.loglimit=5000000
```

5.2.9 hsl.<app>.logcount/hsl.logcount

The number of log files to use in the log file rotation is controlled by `hsl.<app>.logcount`. If not set, this value defaults to the value of the `hsl.logcount` property. If the global property is also not set, the default value is 1.

A value of 1 means that only 1 log file is created, and no log rotation takes place.

When the log.limit is reached, the log file is overwritten and its previous contents are lost.

Set the log.count to 2 or higher to avoid overwriting the log file once it is full.

Example

```
hsl.logcount=2
```

5.2.10 hsl.<app>.logappend/hsl.logappend

Configure `hsl.<app>.logappend` if logging can be appended to existing log files. If not set, this value defaults to the value of the `hsl.logappend` property. If the global property is also not set, the default value is `true`.

If `false`, a new log file will be created when rotating log files.

Example:

```
hsl.logappend=false
```

5.2.11 hsl.<app>.maxcontentlength/hsl.maxcontentlength

For security reasons, to provide denial of service attack protection, the maximum size on an incoming request is limited to the `maxcontentlength`. If the request exceeds this length, HTTP 406 Not Acceptable is returned.

If `hsl.<app>.maxcontentlength` is not set, this value defaults to the value of the `hsl.maxcontentlength` property. If `hsl.maxcontentlength` is also not set, a default of 100.000 is applied.

It is advised not to set this property to a value higher than 500.000.

An example:

```
hsl.maxcontentlength=100000
```

5.2.12 Activating changes to hsl.properties

To activate changes to `hsl.properties` you must restart the managed server.

5.2.13 Troubleshooting hsl.properties

Note the following if you have trouble starting up with a new `hsl.properties` file:

- an empty value for ANY property will block any HSL application from starting up.
Example:

```
hsl.jndiname=
```
- lines starting with '#' are ignored.
- empty lines are ignored.
- do not use whitespace characters in property lines (even at the end). Whitespace characters are tabs and spaces. Inserting whitespace characters may result in a malfunction in the operation of HSL services.

5.2.14 Keeping hsl.properties up to date

When new HSL properties are released through (patch) releases of OHI Back Office, the installation instructions will tell you to change the `hsl.properties` file if required. Also, an updated properties file template will be released, as described in the previous section 'Properties file templates'.

5.3 Examining the Log File

When encountering long-running HSL operations, examining the log file allows you to break down the roundtrip into different components.

Ensure that the log level for the HSL application is set to `FINE`.

If the log level is set to `FINEST`, writing log messages alone may require significant time and may account for much of the time spent in the HSL operation.

If you changed the log level, you must restart the Managed Server to activate the new log properties.

Next, look up the long-running operation in the log file. The example shows log messages of a fictitious operation:

```
Mar 08, 2018 5:09:39 PM com.oracle.insurance.ohibo.hpo.HpoService
getDossierRegels
FINE: begin getDossierRegels
Mar 08, 2018 5:09:39 PM com.oracle.insurance.ohibo.hpo.HpoService getLanguage
FINE: getLanguage() returns: nl-NL
Mar 08, 2018 5:09:39 PM com.oracle.insurance.ohibo.hpo.HpoService
getDossierRegels
FINE: expand=all
Mar 08, 2018 5:09:39 PM com.oracle.insurance.ohibo.hpo.HpoService
getDossierRegels
FINE: limit=10000
Mar 08, 2018 5:09:39 PM com.oracle.insurance.ohibo.hpo.HpoService
getDossierRegels
FINE: number=35
Mar 08, 2018 5:09:39 PM com.oracle.insurance.ohibo.hpo.HpoService
getDossierRegels
FINE: offset=0
Mar 08, 2018 5:09:39 PM com.oracle.insurance.ohibo.hpo.CCallContext
toJDBCObject
FINE: enter toJDBCObject
Mar 08, 2018 5:09:40 PM com.oracle.insurance.ohibo.hpo.CCallContext
toJDBCObject
FINE: leave toJDBCObject
Mar 08, 2018 5:09:41 PM com.oracle.insurance.ohibo.hpo.HpoService
getDossierRegels
FINE: Before calling PL/SQL operation
Mar 08, 2018 5:09:59 PM com.oracle.insurance.ohibo.hpo.HpoService
getDossierRegels
FINE: After calling PL/SQL operation
Mar 08, 2018 5:10:00 PM com.oracle.insurance.ohibo.exception.ExceptionUtil
handleReturnContext
FINE: start handleReturnContext
Mar 08, 2018 5:10:00 PM com.oracle.insurance.ohibo.exception.ExceptionUtil
handleReturnContext
FINE: end handleReturnContext
Mar 08, 2018 5:10:00 PM com.oracle.insurance.ohibo.hpo.HpoService
getDossierRegels
FINE: Before mapping SQL object to Java object
Mar 08, 2018 5:10:21 PM com.oracle.insurance.ohibo.hpo.HpoService
getDossierRegels
FINE: After mapping SQL object to Java object
Mar 08, 2018 5:10:21 PM com.oracle.insurance.ohibo.hpo.HpoService
getDossierRegels
FINE: http code=200
Mar 08, 2018 5:10:21 PM com.oracle.insurance.ohibo.hpo.HpoService
getDossierRegels
FINE: Before creating response
Mar 08, 2018 5:10:22 PM com.oracle.insurance.ohibo.hpo.HpoService
getDossierRegels
FINE: After creating response
Mar 08, 2018 5:10:22 PM com.oracle.insurance.ohibo.hpo.HpoService
getDossierRegels
FINE: end getDossierRegels
```

From this fragment we may derive the following information:

- Total roundtrip is about 43s (5:09:39 - 5:10:22)
- PL/SQL execution: 18s (5:09:41 - 5:09:59)
- Mapping SQL object to Java object:<1s
- Creating response with JSON string:<1s

5.3.1 Changing the log format

The default format for logging timestamps is not suitable for sub-second operations. Logging timestamps in milliseconds since 01-01-1970 is needed if you want to analyse sub-second operations.

To override the default format, create a configuration file with the following contents:

```
# override default format for timestamps in milliseconds since 01-01-1970.
java.util.logging.SimpleFormatter.format=%1$tQ %2$s%n%4$s: %5$s%6$s%n
```

You now need to activate this configuration for the managed server to which the HSL application is deployed:

- Start WebLogic Console
- Choose Environments > Servers > *managed_server*
- Add `-Djava.util.logging.config.file=your_config_file` to the Server Start parameters. Add a line to the file `$DOMAIN_HOME/bin/setUserOverrides.sh` you created earlier. Add the line to the part for the HSL server:

```
JAVA_OPTIONS="-Djava.util.logging.config.file="your_config_file" {JAVA_OPTIONS}"
```

- Restart the Managed Server.
- Call the HSL operation and check that the subsequent log messages show log messages in milliseconds since 01-01-1970

The output should now look like:

```
1520867075960 com.oracle.insurance.ohibo.hpo.HpoService getDossierRegels
FINE: begin getDossierRegels
1520867075971 com.oracle.insurance.ohibo.hpo.HpoService getLanguage
FINE: getLanguage() returns: nl-NL
1520867075974 com.oracle.insurance.ohibo.hpo.HpoService getDossierRegels
FINE: expand=all
1520867075974 com.oracle.insurance.ohibo.hpo.HpoService getDossierRegels
FINE: limit=10000
1520867075975 com.oracle.insurance.ohibo.hpo.HpoService getDossierRegels
FINE: number=11
1520867075975 com.oracle.insurance.ohibo.hpo.HpoService getDossierRegels
FINE: offset=0
1520867075976 com.oracle.insurance.ohibo.hpo.CCallContext toJDBCObject
FINE: enter toJDBCObject
1520867075977 com.oracle.insurance.ohibo.hpo.CCallContext toJDBCObject
FINE: leave toJDBCObject
1520867075978 com.oracle.insurance.ohibo.hpo.HpoService getDossierRegels
FINE: Before calling PL/SQL operation
1520867092723 com.oracle.insurance.ohibo.hpo.HpoService getDossierRegels
FINE: After calling PL/SQL operation
1520867092728 com.oracle.insurance.ohibo.exception.ExceptionUtil
handleReturnContext
FINE: start handleReturnContext
1520867092729 com.oracle.insurance.ohibo.exception.ExceptionUtil
handleReturnContext
FINE: end handleReturnContext
1520867092730 com.oracle.insurance.ohibo.hpo.HpoService getDossierRegels
FINE: Before mapping SQL object to Java object
1520867093066 com.oracle.insurance.ohibo.hpo.HpoService getDossierRegels
FINE: After mapping SQL object to Java object
1520867093068 com.oracle.insurance.ohibo.hpo.HpoService getDossierRegels
FINE: http code=200
1520867093072 com.oracle.insurance.ohibo.hpo.HpoService getDossierRegels
FINE: Before creating response
1520867093073 com.oracle.insurance.ohibo.hpo.HpoService getDossierRegels
FINE: After creating response
1520867093074 com.oracle.insurance.ohibo.hpo.HpoService getDossierRegels
FINE: end getDossierRegels
```

This log output of a fictitious operation gives us the following information:

- Total roundtrip is 17114 ms (1520867093074 - 1520867075960)
- PL/SQL execution: 16745 ms (1520867092723 - 1520867075978)
- Mapping SQL object to Java object: 336 ms (1520867093066 - 1520867092730)
- Creating response with JSON string: 1 ms

6 Upgrading HSL services

Future OHI releases may include a new EAR file for HSL services.

To deploy a new version of an existing HSL application, follow the steps below:

- ✓ Check your web service properties file (typically `hsl.properties`) and implement necessary changes for your release. For information about the contents please see the previous chapter.
- ✓ Logon to the Admin Server console of the domain where the web services are deployed.
- ✓ Navigate to the deployments pane.
- ✓ Choose the 'Lock & Edit' option.
- ✓ If you already have a Retired version of the deployment, mark the check box in front of the retired deployment and delete it.
- ✓ Navigate to the deployment that must be updated and mark the check box in front of it.
- ✓ Press the Update button.
- ✓ Determine whether the same source path still applies (typically a new version is delivered in the `$OZG_BASE/java` folder of your environment but your organisation may have additional distribution methods implemented). When the correct `.ear` file is selected press Next.
- ✓ You now have two options for 'retiring' the previous version. Because normally the Back Office application is not available during patching, you can retire the previous version 'immediately', meaning using a timeout of 1 second:

How would you like to retire the previous version of this application?

☐ Allow the application to finish its current sessions and then retire.

☒ Retire the previous version after retire timeout.

Retire timeout (seconds):

Press 'Finish' to retire the previous version and continue.

- ✓ Choose 'Activate Changes'.
- ✓ Refresh the screen a few seconds after having activated the changes.
- ✓ Inform the communities which use the web services of the availability and publish the latest URIs to the swagger definitions to them.

If the old deployment cannot be deleted when updating, stop the deployment with the 'Force' option and deploy it again completely (using the 'Install' option for deployments). In some cases (depending on the changes) you may need to repeat the Deployment delete/install when the install results in errors. If the deployment keeps failing, you may have to restart the Managed Server(s) as a last resort.

After this the deployment state of the web services should be Active again (be sure the Managed Server(s) is/are running, otherwise start it/them to get this result).

If not, check whether your OHI database environment and deployed version are correct, meaning that their version levels correspond with each other.

7 Appendix A – BASIC authentication

By default, OAUTH2 is used as the authorization method of the HSL webservice. BASIC authentication is offered as a fallback option. This form of authentication involves sending cleartext credentials over a secure encrypted connection (for the purposes of this document, HTTPS). Setting up the HSL webservice for basic authentication involves multiple parts.

The following steps are needed to set up minimal security for the HSL application:

- Set up the WebLogic security realm
- Setup a WebLogic user for accessing the HSL application
- Configure the key store

7.1 Background information

Before you can install the HSL application using BASIC authentication, you need to decide on a Security Model for the HSL Webservices. See [Comparison of Security Models for Web Applications and EJBs](#) for an introduction of the different Security Models. Your choice will depend on the security standards set by your company.

A very short summary:

- **DD Only** (Deployment Descriptors Only): choose this option if the default policies and role-mapping are desired and the WebLogic user “restuser” is allowed to execute the HSL Web Services (or “restuserbsn” for the HSL_BSNCHECK service, or “restuseragb” for the HSL_AGBCHECK service, or for other CHECK services “restuser<...>” for the HSL_<...>CHECK service).
- **Custom Roles**: choose this option if the default policies are desired, but with a customizable role. The default policies are linked to the role “restuser-role” (or “restuserbsn-role” for the HSL_BSNCHECK service, “restuser<...>-role” for the HSL_<...>CHECK service, etc.), which needs to be created using the Admin Console. If this role is not created and assigned, all requests will be refused with HTTP 403 “Unauthorized”.
- **Custom Roles and Policies**: choose this option if you want to overrule the default policy of each web service and create customizable roles, e.g. to limit access to certain of the HSL Webservices.

NOTE: The HSL application must be deployed with Custom Roles and Policies to use token validation.

Within the context of the ‘DD Only’ security model the following WebLogic users hold special significance:

- “restuser” (for all services except HSL_BSNCHECK and HSL_<...>CHECK)
- “restuserbsn” (specific for the HSL_BSNCHECK service) or
- “restuser<...>” (specific for the HSL_<...>CHECK service).

Within the context of the ‘Custom Roles’ security model the following WebLogic roles hold special significance:

- “restuser-role” (for all services except HSL_BSNCHECK and HSL_<...>CHECK)
- “restuserbsn-role” (specific for the HSL_BSNCHECK service) or
- “restuser<...>-role” (specific for the HSL_<...>CHECK service).

In the rest of this chapter the special ‘check’ services, discussed hereafter, will only be documented for the ‘bsn’ and ‘...’ service. The same instructions apply to the other check services as well.

The specific users and roles for check services like the HSL_BSNCHECK and HSL_<...>CHECK (restuserbsn, restuserbsn-role, restuser<...> and restuser<...>-role) were created as an extra security measure to prevent users that gain unauthorized access to the restuser or a WebLogic user with the restuser-role, to easily crawl data from a lot of our services.

Most of the newer HSL services require a relation UUID (or another UUID that was retrieved using the relation UUID first) to retrieve data. In order to retrieve this relation UUID of a member it is required to supply the social security number of the relation as well as the relation's date of birth. The social security number can be retrieved using the HSL_BSNCHECK service.

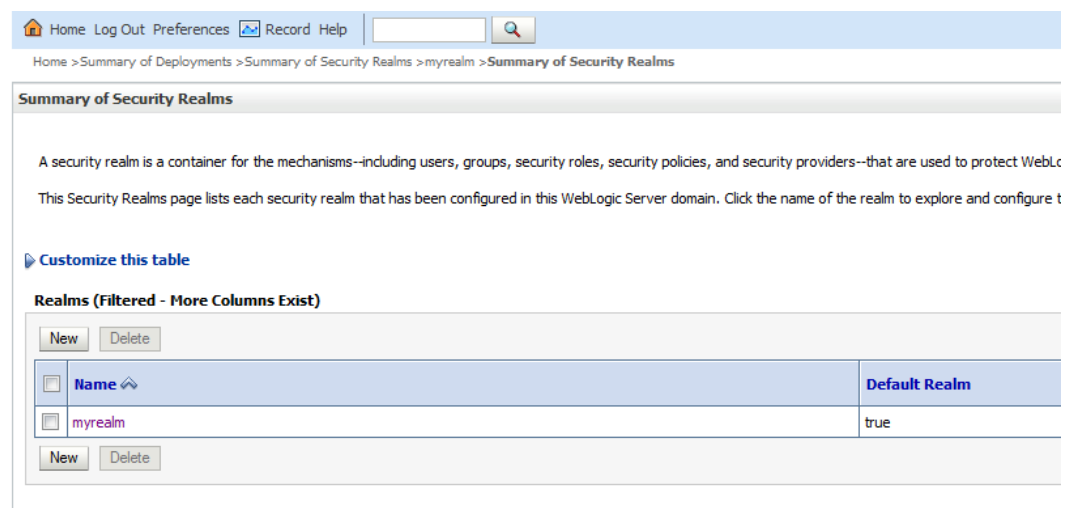
In order to retrieve the relation UUID of a provider it is required to supply the AGB-code and the provider id of the relation. The provider id can be retrieved using the HSL_AGBCHECK service.

Because the HSL_BSNCHECK and 'the other' services are authorized to different users, a person with bad intentions needs to compromise multiple different accounts to be able to crawl all services (without causing many failing calls, which should notify a system administrator that there is suspicious activity).

7.2 Setup security realm

Create a security realm if this has not already been done (normally realm 'myrealm' will already be present).

The security realm 'myrealm' as shown below will be used to configure the security at application level.



If there are no other security realms, this will be the default security realm.

7.2.1 Setup WebLogic user for accessing the HSL application

Each operation of an HSL service requires basic authentication. This means that each call must be made as an authenticated WebLogic user.

Depending on the Security Model you choose for deployment, the WebLogic user that makes the Web Services requests must have additional authorization.

7.2.1.1 DDOnly

The name of the default WebLogic user to access the HSL services is defined in a preconfigured deployment descriptor in the EAR file. This default name is 'restuser' for all services except HSL_BSNCHECK and HSL_<...>CHECK for which the names are 'restuserbsn' and 'restuser<...>'.

If the HSL application is deployed with the default security model (DD Only), the WebLogic user 'restuser' must be created and used as authentication when invoking

the HSL service operations (or 'restuserbsn' for the HSL_BSNCHECK service or 'restuser<...>' for the HSL_<...>CHECK service).

To set up the WebLogic users 'restuser', 'restuserbsn' and 'restuser<...>', select 'Users and Groups' for your security realm:

Home Log Out Preferences Record Help

Home > Realm Roles > Users and Groups > Summary of Environment > Summary of Servers > Summary of Deployments > HSL_POL(v4.31) > Summary of Security

Settings for myrealm

Configuration **Users and Groups** Roles and Policies Credential Mappings Providers Migration

General RDBMS Security Store User Lockout Performance

Click the **Lock & Edit** button in the Change Center to modify the settings on this page.

Save

Use this page to configure the general behavior of this security realm.

Note:
If you are implementing security using JACC (Java Authorization Contract for Containers as defined in JSR 115), you must use the DD Only se Administration Console are disabled.

Name: myrealm

Security Model Default: DD Only

☒ Combined Role Mapping Enabled

Add 'restuser' to the pool of WebLogic users and do the same for 'restuserbsn' and 'restuser<...>':

Home Log Out Preferences Record Help

Home > Users and Groups > Summary of Environment > Summary of Servers > Summary of Deployments > HSL_POL(v4.31) > Summary of Security Realms > my

Messages

✓ User created successfully

Settings for myrealm

Configuration **Users and Groups** Roles and Policies Credential Mappings Providers Migration

Users Groups

This page displays information about each user that has been configured in this security realm.

[Customize this table](#)

Users (Filtered - More Columns Exist)

New Delete

<input type="checkbox"/>	Name ↕	Description
<input type="checkbox"/>	LCMUser	This is the default service account for WebLogic Server Lifecycle Manager configuration updates.
<input type="checkbox"/>	OracleSystemUser	Oracle application software system user.
<input type="checkbox"/>	restuser	weblogic user for accessing HSL applications
<input type="checkbox"/>	weblogic	This user is the default administrator.

New Delete

7.2.1.2 CustomRoles

If you choose Security Model "Custom Roles", create and/or customize the roles "restuser-role", "restuserbsn-role" and "restuser<...>-role" now. See [Securing Resources Using Roles and Policies for Oracle WebLogic Server](#) for more information on how to setup a secure role.

To create the role, assign it to a Group and add WebLogic users to that Group (make sure you create separate groups, one for the "restuser-role", one for the "restuserbsn-role" and so on for the "restuser<...>-role"):

Choose "Security Realm" -> your realm -> "Users and Groups" -> "Groups"

Settings for myrealm

Configuration **Users and Groups** Roles and Policies Credential Mappings Providers Migration

Users **Groups**

This page displays information about each group that has been configured in this security realm.

Customize this table

Groups

New Delete Showing 1 to 8 of 8 Previous | Next

<input type="checkbox"/>	Name ↕	Description	Provider
<input type="checkbox"/>	AdminChannelUsers	AdminChannelUsers can access the admin channel.	DefaultAuthenticator
<input type="checkbox"/>	Administrators	Administrators can view and modify all resource attributes and start and stop servers.	DefaultAuthenticator
<input type="checkbox"/>	AppTesters	AppTesters group.	DefaultAuthenticator
<input type="checkbox"/>	CrossDomainConnectors	CrossDomainConnectors can make inter-domain calls from foreign domains.	DefaultAuthenticator
<input type="checkbox"/>	Deployers	Deployers can view all resource attributes and deploy applications.	DefaultAuthenticator
<input type="checkbox"/>	Monitors	Monitors can view and modify all resource attributes and perform operations not restricted by roles.	DefaultAuthenticator
<input type="checkbox"/>	Operators	Operators can view and modify all resource attributes and perform server lifecycle operations.	DefaultAuthenticator
<input type="checkbox"/>	OracleSystemGroup	Oracle application software system group.	DefaultAuthenticator

New Delete Showing 1 to 8 of 8 Previous | Next

Click the button “New”.

In the next screen, fill in a name and a description

Create a New Group

OK Cancel

Group Properties

The following properties will be used to identify your new Group.

* Indicates required fields

What would you like to name your new Group?

* **Name:**

How would you like to describe the new Group?

Description:

Please choose a provider for the group.

Provider:

OK Cancel

Click the button “OK”.

Choose “Security Realm” -> your realm -> “Roles and Policies” -> “Realm Roles”.

Expand the Node “Global Roles” and click on the node “Roles”.

Settings for myrealm

Configuration Users and Groups **Roles and Policies** Credential Mappings Providers Migration

Realm Roles Realm Policies

Use this table to view, add, modify or remove global or scoped security roles for this security realm. Global roles are listed in the Name column under the Global Roles node. Scoped roles are listed in the Name column under the individual resources that they secure.

Notes:

- This table does not list scoped roles for JNDI resources or Work Context resources. To see these scoped roles, view the Security tab for each JNDI node or Work Context object.
- If you imported security roles for EJBs or Web applications from deployment descriptors using the Install Application Assistant, you must activate changes to access the roles.

Roles

Edit Role Showing 1 to 8 of 8 Previous | Next

Name	Resource Type	Role Policy
Coherence Clusters		
Deployments		
Domain		
Global Roles		
Roles		
Admin	Global Role	View Role Conditions
AdminChannelUser	Global Role	View Role Conditions
Anonymous	Global Role	View Role Conditions
AppTester	Global Role	View Role Conditions
CrossDomainConnector	Global Role	View Role Conditions
Deployer	Global Role	View Role Conditions
Monitor	Global Role	View Role Conditions
Operator	Global Role	View Role Conditions
OracleSystemRole	Global Role	View Role Conditions
JCOM		
JDBC		
JMS		
Servers		

Edit Role Showing 1 to 8 of 8 Previous | Next

In the next screen, click the button “New”.

Global Roles

A global security role applies to all WebLogic resources deployed within a security realm (and thus the entire WebLogic Server domain). Use this page to add, edit or remove global security roles configured in this security realm.

Customize this table

Global Roles

New Delete Showing 1 to 9 of 9 Previous | Next

Role Name	Provider Name
Admin	XACMLRoleMapper
AdminChannelUser	XACMLRoleMapper
Anonymous	XACMLRoleMapper
AppTester	XACMLRoleMapper
CrossDomainConnector	XACMLRoleMapper
Deployer	XACMLRoleMapper
Monitor	XACMLRoleMapper
Operator	XACMLRoleMapper
OracleSystemRole	XACMLRoleMapper

New Delete Showing 1 to 9 of 9 Previous | Next

In the next screen, fill in the name of the pre-defined role “restuser-role”, or “restuser<...>-role” (depending on which group is being created) and click the button “OK”.

Create a New Role for this Realm

OK Cancel

Role Properties

The following properties will be used to identify your new role.

* Indicates required fields

What would you like to name your new role?

* Name: restuser-role

Which role mapper would you like to use with this role?

Provider Name: XACMLRoleMapper ▼

OK Cancel

Back in the screen “Global Roles”, click on the role “restuser-role” or “restuser<...>-role” you have just created. In the next screen, click on the button “Add Conditions” below “Role Conditions:”

Edit Global Role

Save

Global Role Conditions

This page is used to edit the conditions for a global role on an application.

This is the name of the global role.

Name: restuser-role

These conditions determine membership in the role.

Role Conditions :

Add Conditions Combine Uncombine Move Up Move Down Remove Negate

No Policy Specified

Add Conditions Combine Uncombine Move Up Move Down Remove Negate

Save

In the next screen, select “Group” and click button “Next”.

Edit Global Role

Back Next Finish Cancel

Choose a Predicate

Choose the predicate you wish to use as your new condition

The predicate list is a list of available predicates which can be used to make up a security policy condition

Predicate List: Group ▼

Back Next Finish Cancel

In the next screen, enter the name of the Group you created before, and click the button “Add” to move the name to the box below. Then click button “Finish”

Edit Global Role

Back Next **Finish** Cancel

Edit Arguments

On this page you will fill in the arguments that pertain to the predicate you have chosen.

Add one or more groups to this condition. If you add multiple groups, the condition evaluates as true if the user is a member of ANY of the groups.

Group Argument Name:

Add

HSLCRUsersGroup Remove

Back Next **Finish** Cancel

This should result in:

Edit Global Role

Save

Global Role Conditions

This page is used to edit the conditions for a global role on an application.

This is the name of the global role.

Name: restuser-role

These conditions determine membership in the role.

Role Conditions :

Add Conditions Combine Uncombine Move Up Move Down Remove Negate

☐ **Group : HSLCRUsersGroup**

Add Conditions Combine Uncombine Move Up Move Down Remove Negate

Save

Do not forget to click button “Save”.

Now add an existing or new user to the Group to authorize that user for HSL, using the Security Model “CustomRoles”. To create a new user, see the step above, for DDOnly.

To add a user to the Group:

Choose “Security Realm” -> your realm -> “Users and Groups” -> “Users”. Click on the user you want to authorize. In the next screen, move the Group you created to the right, and click the button “Save”.

7.2.1.3 CustomRolesAndPolicies

If you do not want to authenticate the HSL application using the predefined weblogic users 'restuser', 'restuserbsn' and 'restuser<...>' and/or the predefined roles 'restuser-role', 'restuserbsn-role' and 'restuser<...>-role', and instead you want to change the default permissions for individual Web Services or Web Service methods in the HSL application, you can choose to deploy using 'Custom Roles and Policies'.



Attention: deploying HSL with 'Custom Roles and Policies' but not adding your own roles and policies will allow any authenticated WebLogic user to execute the application.

7.2.1.4 Using a custom security policy for a deployed application

The WebLogic console allows the administrator to specify a custom security policy for HSL applications deployed using 'Custom Roles and Policies'.

For example, a custom security policy can be used:

- to limit access to a specified list of named WebLogic users; or
- to limit access to a group of WebLogic users; or
- to limit access to WebLogic users with a specific role; or
- to limit access to a specific web module; or
- to limit access to a specific web service operation inside a module (see Appendix G for an example)
- or a combination of the above.

7.2.2 Set user logout

While setting up HSL services for testing you may want to disable user logout. In a production environment you should enable user logout to discourage fraudulent use. Navigate to the Security Realm and use the 'Configuration > User Lockout' tab.

Home > Summary of Deployments > Summary of Security Realms > myrealm > Summary of Security Realms > myrealm

Settings for myrealm

Configuration Users and Groups Roles and Policies Credential Mappings Providers Migration

General RDBMS Security Store **User Lockout** Performance

Save

Password guessing is a common type of security attack. In this type of attack, a hacker attempts to log in to a computer using various co security realm.

☒ Lockout Enabled

☒ Lockout Threshold: 5

☒ Lockout Duration: 30

☒ Lockout Reset Duration: 5

☒ Lockout Cache Size: 5

☒ Lockout GC Threshold: 400

Save

7.3 Testing with SoapUI

SoapUI is a tool for testing web services which can be downloaded from <http://www.soapui.org>.

It is especially useful for functional testing of the HSL application.

WLS 12c has removed the support for the security protocols SSLv3 and TLS 1.1, because they are now considered insecure.

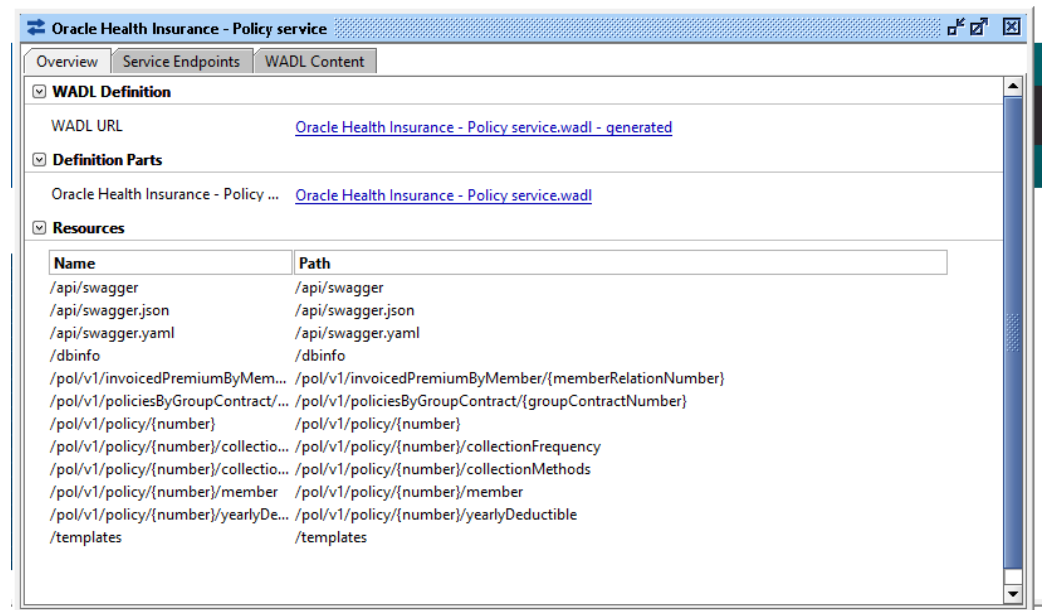
This means you must access the HSL application with a client that uses TLS 1.2.

Unlike earlier versions, SoapUI 5.3 and 5.4 enable TLS 1.2 by default. The examples below assume SoapUI 5.4 or higher.

7.3.1 Create REST project and import Swagger definition

- Follow the instructions in 'Get Runtime Swagger Definition (curl)' to retrieve the runtime Swagger definition from the HSL application and save the output to a file (for example 'saved_swagger.json')
- Create a new REST project (empty value for URL)
- Choose 'Project > Import Swagger' and select the saved Swagger definition.

The operations of the HSL application are now discovered:



You may now create requests for the operations provided by this HSL application.



NOTE: Upon release of this document there was no SoapUI version available that provided the 'Import Swagger' functionality for OpenApi 3.1 documents. Resources/testcases and mockservers can't be automatically generated but can be entered manually.

7.3.2 Create a request

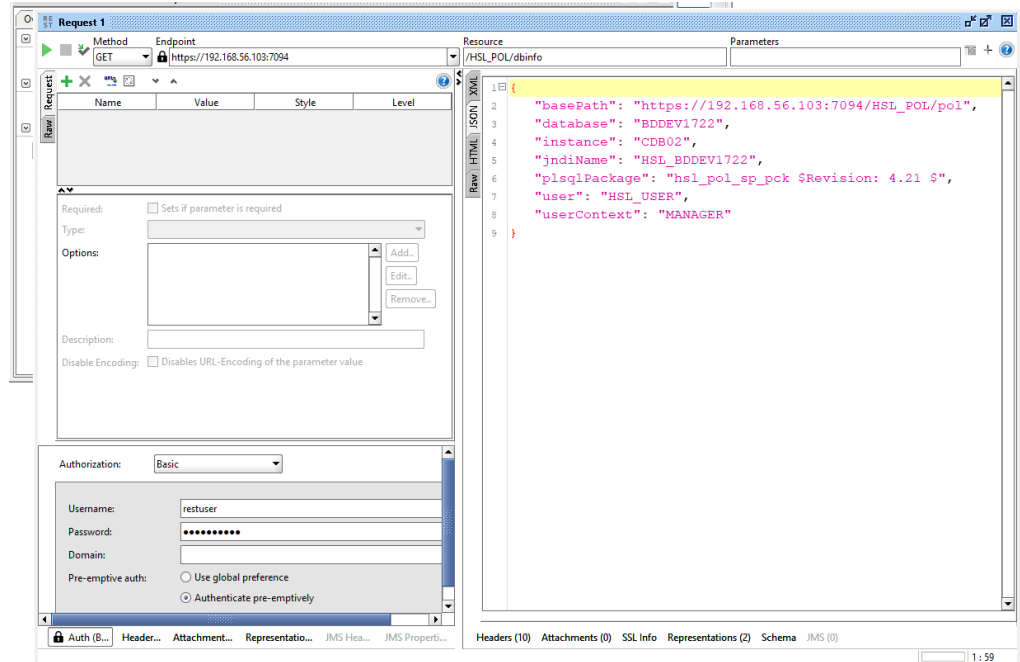
Once you have imported the Swagger definition you may create a request for each of the operations.

In the example below we create a request for the getDatabaseInfo operation:

- Double-click on 'Request 1' of the requested operation (in our case /dbinfo > getDatabaseInfo).
- Set the endpoint for the request to `https://<server>:<port>`
For example <https://127.0.0.1:7094>.
- Select 'Headers' and add a HTTP request header with Header value 'Accept' and with Value value 'application/json'.
- Add other HTTP request headers as required (not needed for this example)

- Select 'Auth' to add Basic Authentication for the WLS user.
If you deployed with the 'DD Only' deployment model the WLS user should be 'restuser' (or 'restuserbsn' for the HSL_BSNCHECK service or 'restuser<...>' for the HSL_<...>CHECK service).
- Set 'pre-emptive authentication'.
- Run the request.

The request window should now look like this:



7.4 Generating a WADL file

A WADL (Web Application Description Language) file may be required by Oracle Service Bus or other middleware to describe your HSL application.

The current HSL applications cannot be used to generate WADL files directly.

However, a WADL file can be easily generated from the online Swagger definition using SoapUI.

This involves the following steps:

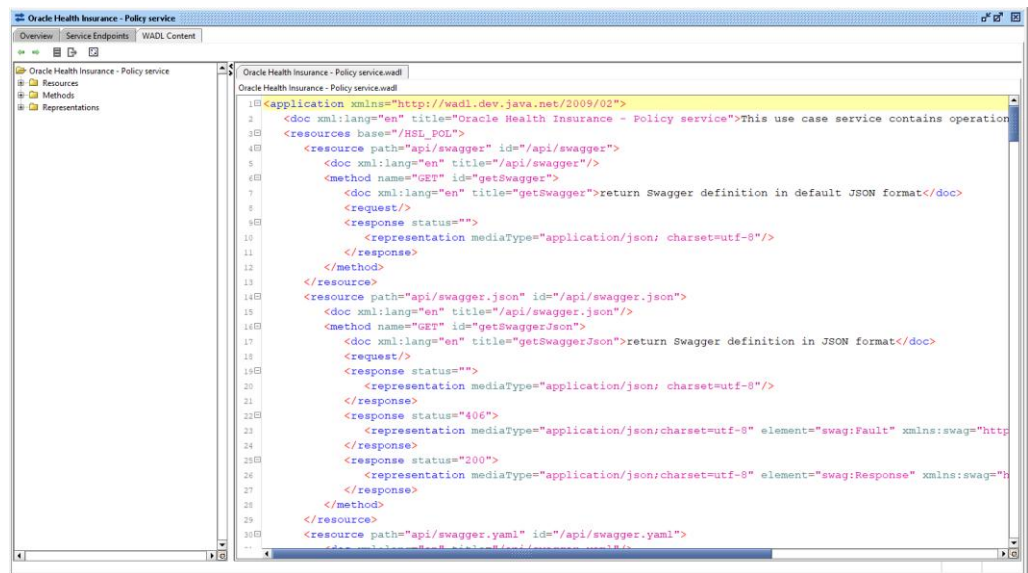
- Create a REST project in SoapUI for your HSL application
- Open the Service Viewer for the REST project
- Export WADL from your REST project

7.4.1 Create a REST project in SoapUI for your HSL application

Follow the instructions in 'Testing with SoapUI' (chapter 7.3) to set up SoapUI for testing with your HSL application.

7.4.2 Open the Service Viewer for the REST Project

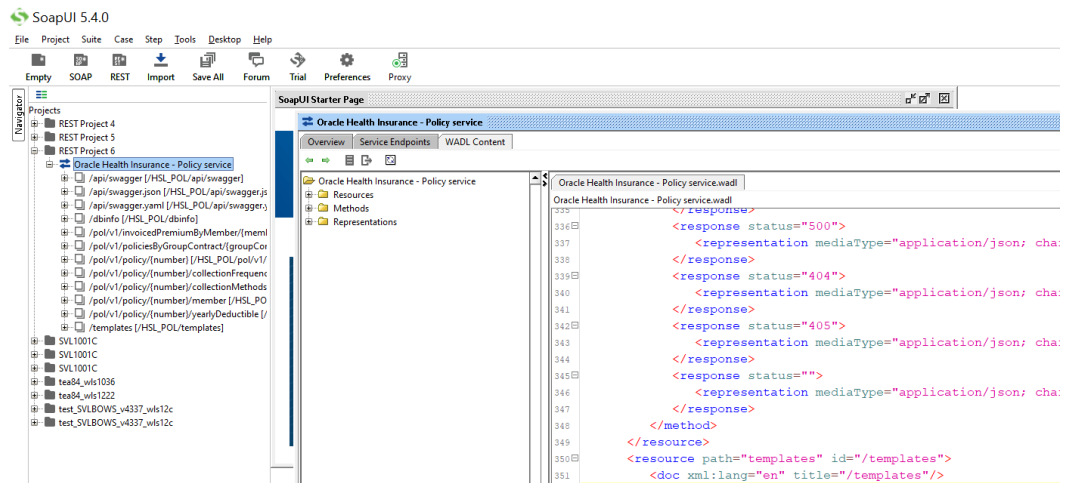
Click on the 'WADL Content' to see the WADL description.
Your screen may look like this:



7.4.3 Export WADL from your REST project

Save the buffer to a WADL file.

Alternatively, you may right-click on the service within the REST project (highlighted in the screen shot below):



And select 'Export WADL' to create the WADL for this application.

8 Appendix B – Service Information

The following URI provides version information about a running HSL application:

`https://server:port/application/dbinfo`

For example:

https://localhost:7002/HSL_POL/dbinfo

This will return a JSON object like below:

```
{
  "basePath": "https://localhost:7002/HSL_POL/pol",
  "database": "BTSPC19",
  "instance": "CDB19",
  "jndiName": "HSL_BTSPC19",
  "plsSqlPackage": "hsl_pol_sp_pck $Revision: 4.39 $",
  "user": "HSL_USER",
  "userContext": "MANAGER"
}
```

Information:

- **basePath**
Format: `https://server:port/application/context`
This is the base URI for all operations in this service.
- **database**
The name of the database associated with the current database connection
- **instance**
Instance name of the database associated with the current database connection.
- **jndiName**
The JNDI name of the database connection (specified in the `hsl.properties` file)
- **plsSqlPackage**
The PL/SQL package which implements the operations of the HSL service.
The revision number refers to the version of the PL/SQL package.
- **user**
The database account used to log on to the database.
- **user context**
The default OHI employee on whose behalf service operations are performed, as specified in the `hsl.properties` file.

9 Appendix C – Removing a WLS domain

In case you want to restructure your environment or recreate a domain you can remove an existing domain.

In order to do this, make sure all servers for the domain are stopped and make sure there is no Node Manager process running which 'guards' this domain.

Next perform the following actions:

- ✓ Completely remove your domain directory including all contents.
- ✓ Remove any reference in start and stop scripts to this domain.
- ✓ Remove, if present, the domain from the <WebLogic home>\oracle_common\common\nodemanager\nodemanager.domains.
- ✓ Remove the domain from the domain-registry.xml file which is located in the Middleware home folder (\$MW_HOME).

For more information, please reference the standard WebLogic documentation.

10 Appendix D – HSL C2B services – deployment points of attention

Starting with OHI Back Office release 10.17.2.2.0, a set of web service operations has been made available in the HTTP Service Layer to replace the ‘old’ Connect to Back Office (C2B) services that modified policies and relations. These SOAP envelope-based services were first delivered in 2006 and have been used for a long time by many OHI customers to send all kinds of policy and relation modification requests to OHI Back Office.

However, as years went by, these services were kept up to date from a functional perspective but received no technical updates. From a technical and security perspective, they could no longer be supported, because they were based on by now obsolete Java libraries and did not support any form of security.

In 2015 it was announced the C2B services would become obsolete and be replaced by more use case driven HSL services. This intention was frustrated because customers could not agree on a uniform set of commonly accepted service definitions to replace the C2B services. It also became clear that OHI customers could not easily say goodbye to the functionally well-known behaviour of the old C2B services. The impact of implementing a new set of functionally different services was perceived as difficult and as a change that would have a large impact on the business.

So, as more strict security requirements demanded phasing out of the old C2B services, time ran out to develop completely new C2B use case services. This resulted in a compromise, where OHI Development would implement a new set of C2B business operations according to the technology used for the existing, modern HTTP Service Layer services, but their functional behaviour would be kept identical, as much as possible.

As a result, the C2B ‘Use Case services’ clearly differ from the other Use Case services that were developed from scratch. The C2B Use Case services should be seen as ‘classic C2B operations’ being implemented with more modern technology but with a minimum of effort. No new functionality has been added and no new requirements were set, to keep the implementation costs low. It was deemed better to invest later on in new functionality.

This clearly influences the way the C2B Use Case services should be deployed and used. This paragraph focuses on these aspects. Please bear in mind that the old C2B services descend from an OHI era in which it was agreed documentation was not part of the contractual obligations and usage knowledge was transferred as part of consulting activities.

10.1 HSL_C2B deployment aspects

The ‘old’ C2B operations were made available in 2 different versions:

- A synchronous deployment
- An asynchronous deployment

The asynchronous deployment version required a hard-coded JMS queue and contained a Message Driven Bean that dequeued the message and called the service. This bean could only be deployed to one WebLogic Managed Server and as such was not scalable. Any submitted messages were processed in First in First out (FIFO) order. This had a fortunate side-effect: 2 changes on the same policy were always processed in the correct order provided they were put on the queue in the correct order.

In the new C2B implementation the asynchronous deployment is no longer supported by code in the application. Modern queueing and service implementations offer this functionality out of the box and as such only a synchronous implementation can be deployed. Queues with delayed asynchronous processing should be implemented through standard middleware functionality and put in front of the synchronous implementation.

This has deployment implications:

- Scalability is still relatively poor as it is expected messages are processed in FIFO order and it is assumed that changes on the same policy are offered and processed non-concurrently. This means the number of processing threads must be kept to a minimum, preferably one or only a few, provided that dequeuing and processing takes care of the order of processing. A C2B operation for adding a new policy and possibly ending an existing one (a typical functionality from the old C2B SOAP Services) is a relatively resource consuming operation, in which up to a several hundred standard and custom 'policy checks' and other business rules are fired and during which a full copy of the policy to be approved may be created, changed and dropped. This may lead to a response time of several seconds even on modern infrastructure. This response time may increase when synchronous policy processing calls also lead to synchronous webservice callouts towards external providers, like 'BRP' (formerly 'GBA') and 'VECOZO'.
- Large amounts of stored messages that may have piled up during a maintenance downtime of OHI Back Office should not be processed through a burst of many parallel threads but must be digested in an ordered manner of (at most) a few parallel processes.

11 Appendix E – Limiting access to a specific application inside a module

When HSL applications are deployed using ‘Custom Roles and Policies’ additional options are available to limit the access to a web application or operation. WebLogic can be configured to limit access through the use of a security policy. To give an idea as to what configuration might involve, an example is shown below.

First, expand the HSLBOWS EAR file, revealing the individual HSL applications.

ORACLE® WebLogic Server Administration Console 12c

Change Center

View changes and restarts

Click the **Lock & Edit** button to modify, add or delete items in this domain.

Lock & Edit

Release Configuration

Domain Structure

DOMSVL12214

- + Domain Partitions
- + Environment
- + **Deployments**
- + Services
- + Security Realms
- + Interoperability
- + Diagnostics

How do I...

- Install an enterprise application
- Configure an enterprise application
- Update (redeploy) an enterprise application
- Monitor the modules of an enterprise application
- Deploy EJB modules
- Install a Web application

System Status

Health of Running Servers as of 17:12

Failed (0)
Critical (0)

Home Log Out Preferences Record Help

Home > Summary of Deployments > HSLBOWS_BATEA08(v4.7) > Roles > Edit Application Scoped Roles > HSLBOWS_BATEA08(v4.7) > Roles > HSLBOWS_BATEA08(v4.7) > Summary of Deployments

Summary of Deployments

Configuration Control Monitoring

This page displays the list of Java EE applications and standalone application modules installed to this domain.

You can update (redeploy) or delete installed applications and modules from the domain by selecting the checkbox next to the application.

To install a new application or module for deployment to targets in this domain, click **Install**.

[Customize this table](#)

Deployments

Install Update Delete

<input type="checkbox"/>	Name ↕	State	Health	Type	Targets
<input type="checkbox"/>	HSLBOWS_BATEA08 (v4.7)	Active	OK	Enterprise Application	MS_SVL12214_BATEA08
	Modules				
	/HSL_BSN			Web Application	
	/HSL_C2B			Web Application	
	/HSL_CLA			Web Application	
	/HSL_FIN			Web Application	
	/HSL_POL			Web Application	
	/HSL_REL			Web Application	
	/HSL_ZKR			Web Application	
	/HSL_ZPN			Web Application	

Now to fully disable the HSL_REL service, enter its configuration page by clicking on the link. Click on the tab 'Security' in the resulting page. Finally enter the 'Policies' sub-tab.

Settings for /HSL_REL

Overview

Configuration

Security

Testing

Monitoring

Roles

Policies


JASPIC

This page summarizes the policies that secure specific URL patterns in this Web application module.

If you are using the DD Only or Custom Roles security model for this deployment, then you cannot use the Administrator to create or delete policies.

[Customize this table](#)

Web Application Module URL Patterns

New	Delete
<input type="checkbox"/> URL Pattern 	Provider Name
There are no items to display	
New	Delete

As we want to disable access to this specific application in its entirety, adding a policy with an URL pattern of '*' is enough. After the creation of the policy, rules and conditions need to be defined that will be enforced through the policy. Enter the policy's configuration page through clicking on the link named after the URL pattern of the newly created policy.

A number of options are available on the following page to narrow, limit or deny access to a web application. Add a condition and choose the predicate 'Deny access to everyone' from the predicate list. The added condition becomes active immediately

after saving the policy at which point all access to the HSL_REL web application is denied.

Edit a Web Application Module URL Pattern Scoped Policy

Save

Use this page to edit the security policy for a URL pattern in this Web application module. This policy overrides

Note:

If you are using the DD Only or Custom Roles security model for this deployment, then you canr

URL Pattern

This is the URL pattern to edit security policy for.

URL Pattern:

Providers

These are the authorization providers an administrator can select from.

Authorization Providers:

XACMLAuthorizer

Methods

This is the list of available methods for this URL pattern.

Methods:

ALL

Policy Conditions

These conditions determine the access control to your web module url pattern resources.

Add Conditions

Combine

Uncombine

Move Up

Move Down

Remove

Negate

☐ Deny access to everyone

Add Conditions

Combine

Uncombine

Move Up

Move Down

Remove

Negate

Save

Overridden Policy

Group : everyone

Note that the created policies survive an update of the ear-file but not a complete reinstall (deletion and subsequent installation of the ear-file). This allows for setting up policies as a one-time configuration step and having all future updates adhere to the same (strict) set of policies.

Oracle Health Insurance Back Office - HTTP Service Layer (HSL) Installation and Configuration Manual

78

12 Appendix F – Eclipse Jersey Monitoring and Diagnostics

The HSL and PSL webservices use Jersey to expose data from a OHI Back Office application through a RESTful interface. Jersey provides functionality for monitoring JAX-RS/Jersey applications. Application monitoring is useful when you need to identify the performance hot-spots in a JAX-RS application or observe execution statistics of particular resources. The information collected in this manner is accessible through multiple applications and/or interfaces. See "[Monitoring RESTful Web Services and Clients](#)" for more information.



WARNING: RESTful webservice monitoring is enabled by default by WLS. In some cases, this may result in increased memory consumption. You can disable the monitoring feature at the WLS domain level, and at the application level. See [Disabling RESTful Web Service Application Monitoring](#).