

# **Agile Product Lifecycle Management**

Agile Drive User Guide

Release 9.3.3

**E39306-01**

October 2013

Agile Drive User Guide, Release 9.3.3

E39306-01

Copyright © 2010, 2013, Oracle and/or its affiliates. All rights reserved.

Primary Author: Usha Pereira

Contributing Author:

Contributor:

This software and related documentation are provided under a license agreement containing restrictions on use and disclosure and are protected by intellectual property laws. Except as expressly permitted in your license agreement or allowed by law, you may not use, copy, reproduce, translate, broadcast, modify, license, transmit, distribute, exhibit, perform, publish, or display any part, in any form, or by any means. Reverse engineering, disassembly, or decompilation of this software, unless required by law for interoperability, is prohibited.

The information contained herein is subject to change without notice and is not warranted to be error-free. If you find any errors, please report them to us in writing.

If this is software or related documentation that is delivered to the U.S. Government or anyone licensing it on behalf of the U.S. Government, the following notice is applicable:

U.S. GOVERNMENT END USERS: Oracle programs, including any operating system, integrated software, any programs installed on the hardware, and/or documentation, delivered to U.S. Government end users are "commercial computer software" pursuant to the applicable Federal Acquisition Regulation and agency-specific supplemental regulations. As such, use, duplication, disclosure, modification, and adaptation of the programs, including any operating system, integrated software, any programs installed on the hardware, and/or documentation, shall be subject to license terms and license restrictions applicable to the programs. No other rights are granted to the U.S. Government.

This software or hardware is developed for general use in a variety of information management applications. It is not developed or intended for use in any inherently dangerous applications, including applications that may create a risk of personal injury. If you use this software or hardware in dangerous applications, then you shall be responsible to take all appropriate fail-safe, backup, redundancy, and other measures to ensure its safe use. Oracle Corporation and its affiliates disclaim any liability for any damages caused by use of this software or hardware in dangerous applications.

Oracle and Java are registered trademarks of Oracle and/or its affiliates. Other names may be trademarks of their respective owners.

Intel and Intel Xeon are trademarks or registered trademarks of Intel Corporation. All SPARC trademarks are used under license and are trademarks or registered trademarks of SPARC International, Inc. AMD, Opteron, the AMD logo, and the AMD Opteron logo are trademarks or registered trademarks of Advanced Micro Devices. UNIX is a registered trademark of The Open Group.

This software or hardware and documentation may provide access to or information on content, products, and services from third parties. Oracle Corporation and its affiliates are not responsible for and expressly disclaim all warranties of any kind with respect to third-party content, products, and services. Oracle Corporation and its affiliates will not be responsible for any loss, costs, or damages incurred due to your access to or use of third-party content, products, or services.

---

---

# Contents

<b>Preface</b> .....	v
Audience .....	v
Documentation Accessibility .....	v
Related Documents .....	v
Conventions .....	v
 <b>1 Introducing Agile Drive</b>	
1.1 Working with Agile Drive .....	1-1
1.2 Limitations .....	1-2
1.3 Definitions .....	1-2
1.4 Structure of Agile Drive .....	1-3
 <b>2 Setting Up Agile Drive</b>	
2.1 Enabling Agile Drive in Java Client .....	2-1
2.2 Configuring Agile Drive Settings .....	2-1
2.2.1 Changing Parameter Values in the settings.conf File .....	2-2
2.2.1.1 Parameter Definitions .....	2-2
2.2.1.2 URL for Application and File Manager .....	2-2
2.2.1.3 User Account Details .....	2-2
2.2.1.4 Encoding Details .....	2-2
2.2.1.5 Read Only Mode .....	2-3
2.2.1.6 Cache Tuning Parameters .....	2-3
2.2.1.7 Exclusion Filters .....	2-3
2.2.1.8 Maximum Rows Displayed .....	2-3
2.2.2 Agile Drive Configuration for OAM Setup .....	2-3
2.2.3 Deployment Architecture .....	2-5
2.2.4 Optional Settings .....	2-6
2.2.5 Platform Settings .....	2-6
2.3 Mapping Agile Drive .....	2-6
2.3.1 On Windows XP System .....	2-7
2.3.2 On Windows VISTA System .....	2-7
2.3.3 On Windows 7 System .....	2-8
2.3.4 On Macintosh System .....	2-9
2.3.5 On GNOME Linux System .....	2-10
2.3.6 On KDE Linux System .....	2-10

### 3 Using the Agile Drive

3.1	Searching for Agile Objects .....	3-1
3.1.1	Search Limitations .....	3-1
3.2	Working with Files and Folders.....	3-2
3.3	Opening files in Agile Drive .....	3-3
3.4	Tracking Versions .....	3-4
3.5	Traversing Item Revisions .....	3-6
3.6	Traversing a Bill of Material.....	3-7

---

---

# Preface

Agile PLM is a comprehensive enterprise PLM solution for managing your product value chain.

## Audience

This document is intended for administrators and users of the Agile PLM products.

## Documentation Accessibility

For information about Oracle's commitment to accessibility, visit the Oracle Accessibility Program website at <http://www.oracle.com/pls/topic/lookup?ctx=acc&id=docacc>.

### Access to Oracle Support

Oracle customers have access to electronic support through My Oracle Support. For information, visit <http://www.oracle.com/pls/topic/lookup?ctx=acc&id=info> or visit <http://www.oracle.com/pls/topic/lookup?ctx=acc&id=trs> if you are hearing impaired.

## Related Documents

Oracle's Agile PLM documentation set includes Adobe® Acrobat PDF files. The Oracle Technology Network (OTN) Web site <http://www.oracle.com/technetwork/documentation/agile-085940.html> contains the latest versions of the Agile PLM PDF files. You can view or download these manuals from the Web site, or you can ask your Agile administrator if there is an Agile PLM Documentation folder available on your network from which you can access the Agile PLM documentation (PDF) files.

## Conventions

The following text conventions are used in this document:

Convention	Meaning
<b>boldface</b>	Boldface type indicates graphical user interface elements associated with an action, or terms defined in text or the glossary.
<i>italic</i>	Italic type indicates book titles, emphasis, or placeholder variables for which you supply particular values.

Convention	Meaning
monospace	Monospace type indicates commands within a paragraph, URLs, code in examples, text that appears on the screen, or text that you enter.

---

# Introducing Agile Drive

Agile Drive is a system of managing the file attachments of Agile objects from your computer system in the form of files and folders, without requiring you to invoke Agile PLM application. It connects Agile's Distributed File Manager as a network place on your system, thus enabling Explorer like operations, such as copy or delete, on file attachments of Agile objects. It simplifies file management, leveraging existing intuitive client applications, like Explorer, Mac Finder, etc.

## 1.1 Working with Agile Drive

Agile Drive enables you to use the files and folders available in Agile PLM without having to download them. With Agile Drive, you can carry out the following actions:

1. Work on Files, such as documents, drawings, associated with Agile objects as file attachments in Agile PLM System
  - **View a File:** Open a file directly from an Agile Drive folder and view it in its native application, without downloading or checking out.
  - **Save a File:** Save a file directly in an Agile Drive folder and create a file attachment to the corresponding Agile object in the Agile PLM System.
  - **Edit a File:** Edit a file in its native application directly from an Agile Drive folder without downloading or checking out. To create a new version, save it as a new file.
  - **Create a File:** Create a new file in Agile Drive using drag and drop from a non-Agile Drive.
  - **Delete a File:** Delete a file from an Agile Drive folder using **Delete** key, which in turn deletes the file attachment from the corresponding Agile object in the Agile PLM system.
  - **View File Properties:** View file properties, such as data of creation, date of last modification, size and more. Right-click a file in the Agile folder to locate View File Properties.
  - **Add a File:** Add a file from your local drive, or any non-Agile network drive to an Agile Drive folder. Agile Drive stores this file as a file attachment to the corresponding Agile object in Agile PLM system. Agile Drive creates a version of every file that you add (this applicable only for Design and File Folder objects). You can choose either the Drag-Drop option or Copy-Paste option to add a file.
  - **Move a File:** Move a file from Agile Drive folder. You can use the Cut-Paste option to move a file from Agile Drive folder. Agile Drive creates a version of

every file that you remove (this is applicable only for Design and File Folder objects).

- **Copy Files:** Copy files from a non-Agile Drive folder into an Agile Drive folder or drag and drop the required file.

## 2. Work on Folders

- **View Folder Properties:** Select Properties from right-click menu to view file properties of an Agile Drive folder.

## 1.2 Limitations

Agile Drive does *not* support the following functionality:

### File Functions

- Save a file to a folder on the Agile Drive. Use the Save As option to save the file under a different name.
- Rename a file
- Check-in files from Agile Drive folders
- Check-out files into Agile Drive folders
- Create files in Agile Drive folder
- Extract data out of an uploaded file in Agile PLM
- Undo operations

### Folder Functions

- Create Agile Drive folders
- Use the Copy-Paste option or the Drag-Drop option to move an Agile Drive folder into another Agile Drive folder
- Use the Copy-Paste option or the Drag-Drop option to move a non-Agile Drive folder to an Agile Drive folder
- Rename Agile Drive folders

### Business Functions

- Affected Items & BOM revisions rendering only for ECOs
- Design Structure expansion
- Workflow approvals
- Status change
- Display of Application data (Cover Page/P2/P3)
- PPM Content Tab

## 1.3 Definitions

Name	Descriptions
Agile Drive	A file system that helps manage the files attached to objects in the Agile PLM system. It is a logical representation of the Agile PLM objects and their associated attachments.

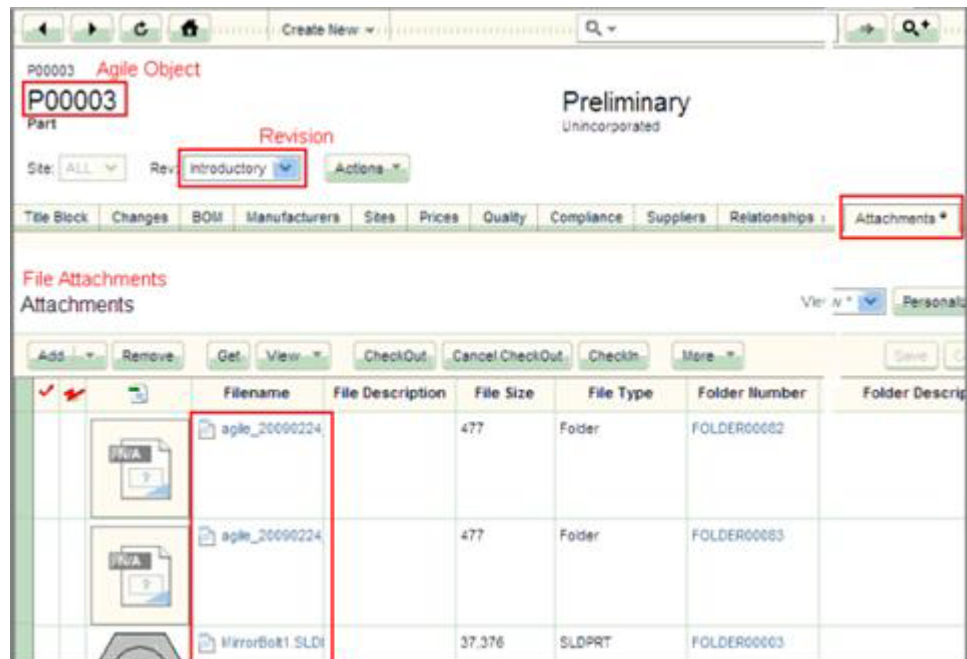
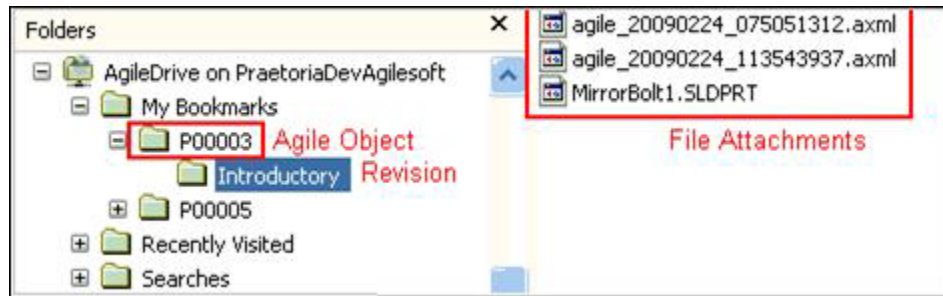


Name	Descriptions
Agile object	An entity defined in Agile PLM that groups a set of attributes and relationships related to that object. Examples: Item, Folder, etc.
Agile PLM folder	A folder in Agile PLM system that holds attachments of other Agile objects, such as Item, Change Order, etc. Agile PLM folder is also treated as an independent Agile object.
Agile Drive folder	A folder that represents an Agile object on your system.
Non-Agile Drive folder	A folder on your system drive or any network drive other than Agile Drive.

## 1.4 Structure of Agile Drive

Agile Drive displays Agile objects as folders, and attachments as files in these folders. The table below gives us a better understanding of Agile objects in both; Agile Drive and Agile PLM system.

Entity	In Agile PLM System	In Agile Drive
Part	A Part is an Agile object. Example - P00003	A Part is a folder, called as Agile Drive folder, named after the Agile object it represents. Example - P00003
Revision	A Revision is a state of an Agile object. Example: Introductory	A Revision is a Sub-folder, again called as Agile Drive folder, named after the Revision state of the Agile object it represents. Example: Introductory
Attachments	An Attachment is a file associated to an Agile object. Example: - agile_20090224_075051312.xml - agile_20090224_113543937.xml - MirrorBolt1.SLDPRT	An Attachment is a Agile Drive file contained in an Agile Drive folder. The name of this Agile Drive file is exactly the same as that of corresponding Attachment. Example: - agile_20090224_075051312.xml - agile_20090224_113543937.xml - MirrorBolt1.SLDPRT



---

## Setting Up Agile Drive

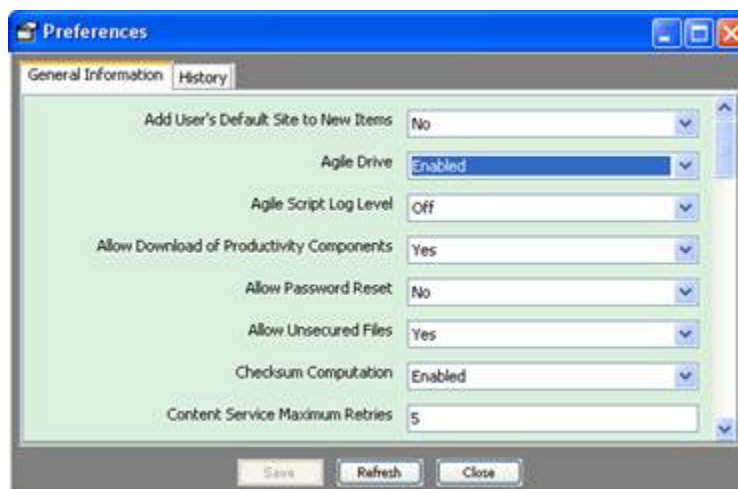
This chapter helps you to configure and map Agile Drive settings.

### 2.1 Enabling Agile Drive in Java Client

When you deploy Agile PLM, by default, the Agile Drive is set as **Disabled**. To use Agile Drive, ensure to enable it in Java Client.

**To enable Agile Drive:**

1. In Java Client, go to **Server Settings > Preferences**.
2. From the Agile Drive dropdown list, select **Enabled**. By default, Agile Drive is set to **Disabled**.



Once you enable the Agile Drive, the access will be Read-only. To change the access to Read-Write, see Configuring the Agile Drive Settings.

3. Restart all Distributed File Managers.

### 2.2 Configuring Agile Drive Settings

You can customize settings for Agile Drive by editing parameter definitions in the settings.conf file.

#### 2.2.1 Changing Parameter Values in the settings.conf File

To change parameter values in the settings.conf file:

1. Navigate to  
<Installed server  
location>\FileManager\webapps\webdav.war\WEB-INF\classes\  
  
<Installed server  
location>\FileManager\work\Catalina\localhost\webdav\WEB-INF\classes
2. Open 'settings.conf' file
3. Set the readonly.mode=false & Save file.
4. Restart FileServer.

### 2.2.1.1 Parameter Definitions

You can edit the settings.conf file to define the following parameters.

- URL for Application and File Manager
- User Account Details
- Encoding Details
- Readonly mode
- Exclusion Filters
- Cache tuning
- Maximum rows displayed

### 2.2.1.2 URL for Application and File Manager

Name	Description
app.server.url	Specifies the location of the Agile PLM Application Server. The format is http://<Server>:<Port>/Agile/RMIServlet
file.server.url	Specifies the location of the File Server (Manager). The format is http://<Server>:<Port>/Filemgr/services/FileServer

### 2.2.1.3 User Account Details

User Credentials	Description
Name	Agile User ID Example: ifsuser
Password	The encrypted Agile User Password Example: 221B758BAAE4C4

### 2.2.1.4 Encoding Details

Parameter	Description
name.encoding	Encodes directory names using HTML URL Encoding. Setting the value to 'FALSE' enables HTML URL encoding on folder names.

### 2.2.1.5 Read Only Mode

Parameter	Description
readonly.mode	Setting it to 'FALSE' turns on the 'Read-write' mode. Setting it to 'TRUE' allows you to only view the files and not modify them. The default setting is 'TRUE'.

### 2.2.1.6 Cache Tuning Parameters

Parameter	Description
cache.reload.interval	Setting cache reload interval to 2 enables you to refresh the cache twice.
cache.timeout	Setting cache timeout to 30 implies cache entries are deleted from Agile Drive after being inactive for 30 minutes.  30 indicates the time to live (TTL) for cache entries. The minimum cache timeout is 20 minutes.

### 2.2.1.7 Exclusion Filters

Parameter	Description
exclude.filetypes	Specifies file types that should be filtered out of the file list. Usage: exclude.filetypes - doc,dwg prt. For example, to filter out Word files and show only PDFs, set exclude.filetypes=doc.

### 2.2.1.8 Maximum Rows Displayed

Parameter	Description
max.rows	Specifies the number of rows to be displayed in the Search Results and BOM tables.  Minimum value = 250 Maximum value = 5000

## 2.2.2 Agile Drive Configuration for OAM Setup

The Agile Drive configurations given below are applicable for Oracle Access Manager and Windows NTLM.

#### To configure Agile Drive for SSO setup:

1. Ensure Agile Drive is enabled in the Java Client.
2. Configure LDAP Authenticator in WLS Admin console. Refer to the *Agile PLM Administrator Guide* for details.

**Settings for AgileRealm**

Configuration Users and Groups Roles and Policies Credential Mappings **Providers** Migration

**Authentication** Password Validation Authorization Adjudication Role Mapping Auditing Credential Mapping Certification Path Keystores

An Authentication provider allows WebLogic Server to establish trust by validating a user. You must have one Authentication provider in a security realm, and you must have one Assertion provider in a security realm. Different types of Authentication providers are designed to access different data stores, such as LDAP servers or Oracle Internet Directory. You can also configure a Realm Adapter Authentication provider that allows you to work with users and groups from previous releases of WebLogic Server.

[Customize this table](#)

**Authentication Providers**

Click the **Lock & Edit** button in the Change Center to activate all the buttons on this page.

New Delete Reorder Showing 1 of 3

Name	Description
AgileIdentityAsserter	Agile Identity Assertion Provider
AgileAuthenticator	Agile Authentication Provider
OIDAuthenticator	Provider that performs LDAP authentication

**Settings for OIDAuthenticator**

Configuration Performance

Common **Provider Specific**

Click the **Lock & Edit** button in the Change Center to modify the settings on this page.

Save

Use this page to define the provider specific configuration for this Oracle Internet Directory Authentication Provider.

**Connection**

**Host:** blr2230059.idc.oracle.cc

**Port:** 3060

**Principal:** cn=orcladmin,cn=Users,dc=oracle,dc=com

**Credential:** .....

**Confirm Credential:** .....

☐ **SSLEnabled**

**Users**

**User Base DN:** cn=Users,dc=idc,dc=oracle,dc=com

3. Ensure the File Server and Agile Drive application are configured with WLS direct access without going through the proxy URL.

Example:

IN server.conf for File server

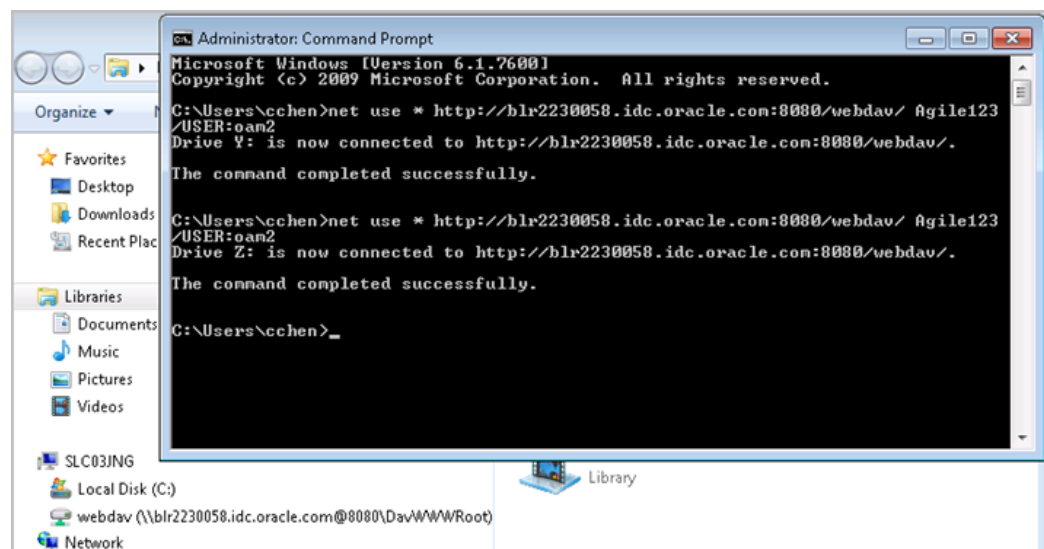
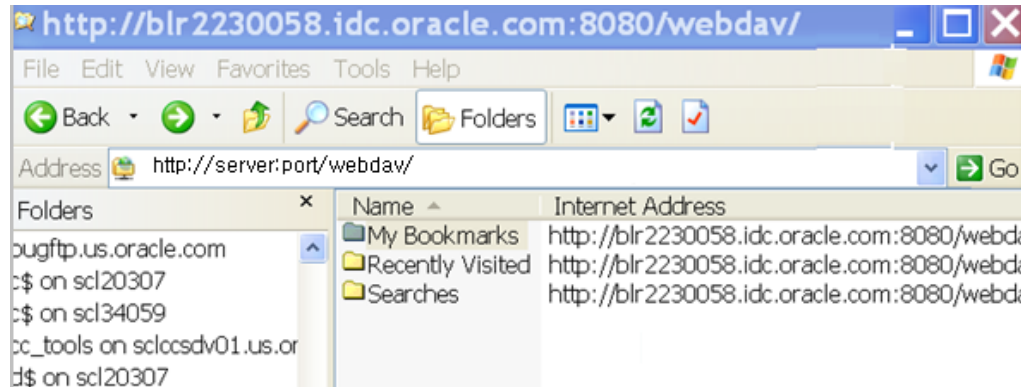
- app.server.http://<Server>:<Port>/Agile/services/FSHelper
- file.server.url=http://<Server>:<Port>/Filemgr/services/FileServer

- `dms.server.url=http://<Server:<Port>/Agile/services/DmsService`

In Settings.conf for Agile Drive

- `app.server.url=http://<server>:<Port>/Agile/RMIServlet`
- `file.server.url=http://<server>:<Port>/Filemgr/services/FileServer`

4. Configure Agile drive in Windows XP and Window 7 and the results are as shown below.



### 2.2.3 Deployment Architecture

- XML based request/response model
- Customized version of Tomcat 6.0 Web DAV Servlet
- Supported on most platforms
- Deployed on File Manager instance as a new Web Application
- Communicates with Application Server for object meta data
- Caching for better performance

### 2.2.4 Optional Settings

Agile Searches on Windows XP/Vista times out after 30 seconds. This is due to the timeout feature of Microsoft Internet Explorer 7.

**To increase the Microsoft Client timeout:**

1. Add a ReceiveTimeout DWORD value with a data value of (<number of seconds>)\*1000 in the Registry settings as follows: *HKEY\_CURRENT\_USER\Software\Microsoft\Windows\CurrentVersion\Internet Settings* Example: If you want the timeout duration to be 8 minutes, set the ReceiveTimeout data value to 480000 (<480>\*1000).
2. Reboot the system.

## 2.2.5 Platform Settings

**1. Microsoft Windows Explorer - XP/Vista**

The Web Folders Client is bundled in XP/Vista. Download and install Microsoft Web Folder Update **KB907306** from

<http://www.microsoft.com/downloads/details.aspx?FamilyId=17C36612-632E-4C04-9382-987622ED1D64&displaylang=en>

**2. MAC OSX Finder**

To ensure the correct working of file uploads, disable the creation of intermediate file store (.DS\_Store).

<http://support.apple.com/kb/HT1629>

**3. IIS Support**

Supports only IIS 6.0 & 7.0.

Ensure that the **WebDAV** Web Service Extension is set to **Allowed**.

## 2.3 Mapping Agile Drive

You can map Agile Drive on one of the following operating systems.

- ["On Windows XP System"](#) on page 2-6
- ["On Windows VISTA System"](#) on page 2-7
- ["On Windows 7 System"](#) on page 2-8
- ["On Macintosh System"](#) on page 2-9
- ["On GNOME Linux System"](#) on page 2-9
- ["On KDE Linux System"](#) on page 2-10

### 2.3.1 On Windows XP System

**To map Agile Drive on MS Windows XP system:**

You cannot deploy Agile Drive on MS Windows XP-64 since it does not contain the web folders component.

1. On the desktop, double-click the My Network Places icon.
2. Click the Add a network place link.
3. In the Add Network Place Wizard window click Next. Choose a network location.
4. Enter the Host Name or IP Address of the server where Agile Drive is deployed, together with its Port Number and the Folder Name, as follows:

<http://<Host Name or IP Address>:<port>/webdav/>



---

**Note:** Use the host name/IP address of web proxy or Tomcat server where Agile Drive is deployed (same as the Agile File Manager by default). Contact your Agile administrator for the IP address and complete path of Agile Drive.

---

5. Click **Next**. In the Connection window that pops up, enter your Agile PLM username and password. Contact your Agile administrator for username and password.

If you do not want Agile Drive to ask you for user name and password each time you connect, select the Remember my password check box.

6. Click **OK**. Enter a name for the network place.
7. Click **Next**.
8. Click **Finish**.

The Agile Drive folder window appears.

## 2.3.2 On Windows VISTA System

To map Agile Drive on Windows VISTA system:

1. Click Computer in the Start menu.
  - In the Computer window, click the Map a Network Drive icon.
  - In the Map Network Drive wizard window, click the Connect to a Web site that you can use to store your documents and pictures link.
  - In the Add Network Location Wizard window, click Next. Choose a custom network location.
2. Specify the location of your website.
3. Select Choose a custom network location.
4. Enter the Host Name or IP Address of server where Agile Drive is deployed, together with its Port Number and the Folder Name, as follows:

http://<Host Name or IP Address>:<port>/webdav/

---

**Note:** Use the host name/IP address of web proxy or Tomcat server where Agile Drive is deployed (same as the Agile File Manager by default). Contact your Agile administrator for the IP address and complete path of Agile Drive.

---

5. Click **Next**.
6. In the Connection window that pops up, enter your Agile PLM username and password. Contact your Agile administrator for username and password.

If you do not want the Agile Drive to ask you for username and password each time you wish to connect, select the Remember my password check box.

7. Click **OK**. Enter a name for the network location. You may change this name to one of your choice.
8. Click **Finish**.

9. Click Next.

The Agile Drive folder window appears.

---

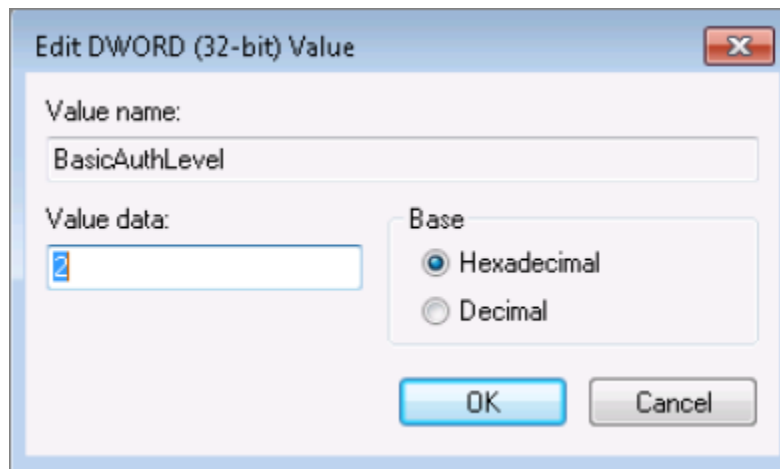
**Important:** Agile Drive folders do not open in Windows Vista when you double-click. You need to right-click on it and select Open.

---

### 2.3.3 On Windows 7 System

To map Agile Drive on Windows 7 system (both 32-bit and 64-bit machine):

1. Click the Start button in Windows 7.
2. Run regedit.
3. Navigate to key "HKEY\_LOCAL\_MACHINE\SYSTEM\CurrentControlSet\services\WebClient\Parameters" in regedit and modify the parameter "BasicAuthLevel" with value of 2. This enables basic authentication for Windows 7.



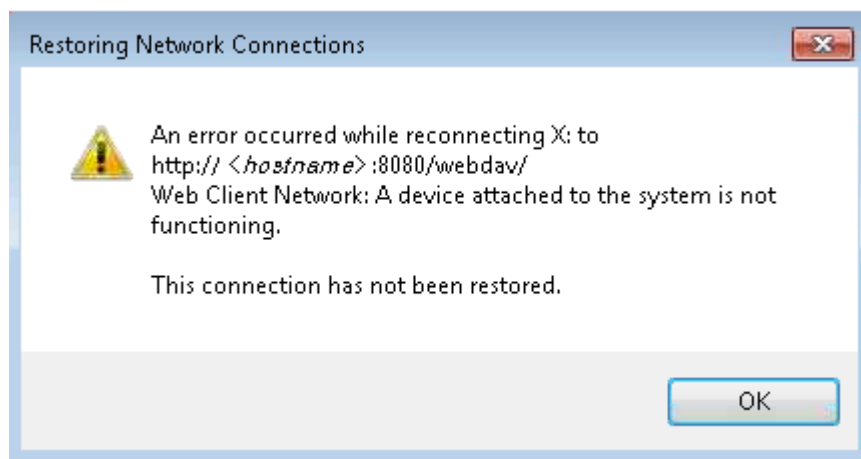
4. Close regedit to save the changes.
5. Restart the service of "Web Client" in Windows 7 Services.
6. Launch the command in Windows 7.
7. Enter the following in the command line: `net use * http://<Host Name or IP Address>:<port>/webdav/ PASSWORD /USER:USERID` where User=Username, and password.
8. Press ENTER.

You have successfully mapped Agile Drive on Windows 7.

---

**Note:** Users connecting to Agile Drive on WIN7 come up against the below warning message. Since this is a WIN7 limitation, the workaround is to disconnect and configure Agile Drive again.

---



### 2.3.4 On Macintosh System

To map Agile Drive on the Macintosh system:

1. Select Connect to Server from Go in Main menu.
2. In the Connect to Server window, enter the Host Name or IP Address of the server where Agile Drive is deployed, together with Port Number and Folder Name, as follows:

`http://<Host Name or IP Address>:<port>/webdav/`

---

**Note:** Use the host name/IP address of web proxy or Tomcat server where Agile Drive is deployed (same as the File Manager by default). Contact your Agile administrator for the IP address and complete path of Agile Drive.

---

3. Click Connect.
4. Enter your Agile PLM username and password.
5. Click OK.

The Agile Drive folder window appears.

### 2.3.5 On GNOME Linux System

To map Agile Drive on the GNOME Linux system:

1. Select Connect to Server... from Places in the main menu. The Connect to Server screen appears.
2. Enter the following parameters:

Service type	Select <b>WebDAV (HTTP)</b> from the drop-down list.
Server	Enter the <b>IP Address</b> of the server where Agile Drive is deployed.
Port	Enter <b>Port Number</b> of the server. The default value is <b>80</b> .
Folder	Enter <b>webdav</b> in lower case.

User Name	Enter your Agile PLM username.
Name to use for connection	Enter any name of your choice. Contact the Agile administrator for required values.

3. Click Connect.
4. Enter your Agile PLM password and click Connect.  
The Agile Drive default folder window appears.

### 2.3.6 On KDE Linux System

**To map Agile Drive on the KDE Linux system:**

1. Open Shell Console and execute `knetattach`.
2. Select Webfolder (webdav) and click Next.
3. Enter data in the table below or contact your Agile administrator for required values.

Name	Enter a name of your choice.
User	Enter your Agile PLM user name.
Server	Enter the IP Address of the server where Agile Drive is deployed.
Port	Enter Port Number of the server. The default value is 80.
Folder	Enter webdav in lower case.

4. Click Connect.  
The Agile Drive folder window appears.

---

## Using the Agile Drive

You can access Agile Drive using Windows Explorer, listed under My Network Places. When prompted, log in using your Agile PLM user name and password.

For quick access to Agile Drive, you may create a shortcut on your desktop or create its menu item in the Start Menu.

---

**Note:** Access to Agile Drive folders and files depends on the roles and privileges assigned to you in Agile PLM Administrator.

MS Vista 64-bit and Windows XP 64 are not supported because Microsoft does not ship the required drivers. To open a folder, right-click on it and select Open.

---

### 3.1 Searching for Agile Objects

You can search for Agile PLM objects using Agile's canned (predefined) queries, such as Global Searches and Personal Searches. A canned search query appears as a folder in Agile Drive, and the Search Results appear as folders within this folder.

For example: To perform a search called Unreleased Changes That I Created, navigate to the corresponding Folder. All unreleased changes that you created appear as folders within this Search folder. Navigate to the desired unreleased change folder to see the affected items and its attachments, if any.

#### 3.1.1 Search Limitations

Any search that requires user inputs or search criteria is not a feature of Agile Drive. For example, you cannot search for a specific ECO, say ECO25000. To search for specific searches, you need to use the Explorer feature of file or folders search.

**To search for specific folders in (Windows XP):**

1. Click Start > Search > For Files or Folders...
2. In the Search Results window, click All Files and Folders. Specify the search criteria in the search field(s).
3. In the Look in drop-down list, select Browse. A Browse for Folder window pops up.
4. Expand My Network Places and select the Agile Drive.
5. Click OK to return to the Search Results window.
6. Click Search button. The specified object appears as a folder in the Search results.

## 3.2 Working with Files and Folders

You can perform the following actions on files and folders in Agile Drive.

---

---

**Note:** Due to limitations of the client OS, Agile Drive error messages do not show up correctly on the client side.

---

---



---

---

**Note:** Intermittent failures can occur while adding multiple files on MAC OSX finder.

---

---

How to	Steps
View or read a file	<p>In an Agile Drive folder, double-click a file to read or view. Alternately, select Open from the right-click menu. The system opens the file in its associated application.</p> <p>For example, when you double-click a MS Word document file in an Agile folder, the system invokes MS Word, which opens this document in editable mode. If MS Word is not installed on your system, you cannot view the document.</p> <p>You can only open the MS Office files directly from Agile Drive provided MS Office or MS Office Viewer application is installed on your system. For every other file type, you need to drag and drop the file (or copy the file and paste it) to the desktop or local drive and open it with its associated application.</p>
Save a file	<p>In Agile Drive, you can save a file in two ways:</p> <p>Save a new file in an Agile Drive folder directly: Create a file in an application and click Save (or Ctrl+S). In the Save window, select and save it in the desired Agile Drive folder.</p> <p>Save As: After editing an existing file in the Agile Drive folder, you can only save it using the Save As option due to the versioning aspect of Agile PLM.</p> <p>Use the Save As function to copy a file from an Agile Drive folder to your system folder, and save it after editing.</p>
Delete a file	<p>Deletion of a file from an Agile Drive folder implies removal of a file attachment from an Agile object.</p> <p>To delete a file, select the desired file(s) in the Agile Drive folder and press Delete (Del) key once, or select Delete from right-click menu.</p> <p>The system deletes the file(s) without issuing any warning or requesting any confirmation. Agile Drive continues to display the deleted file(s) until you Refresh the display.</p> <p>Although the file appears to be deleted from Agile Drive folder, and from the corresponding Agile object, the Agile PLM application does not purge it out.</p> <p>Agile Drive does not allow deletion of a Redlined File.</p>
View properties of a file	<p>Select Properties from right-click menu of a selected file in the Agile Drive folder, to view its general properties.</p>

How to	Steps
Add a file	<p>Adding a file in an Agile Drive folder implies adding a file attachment to an Agile object. You can do this by</p> <ul style="list-style-type: none"> <li>- copying &amp; pasting</li> <li>- dragging &amp; dropping, a file from a non-Agile Drive folder into an Agile Drive folder.</li> </ul> <p>You can also use the Save, and Save As features to save a file from an application.</p> <p>Agile Drive does not display the added file(s) until you refresh the display.</p> <p>When you add multiple files in Read-only mode of Agile Drive, a pop-up message appears for each file you add. It is recommended that you add only one or two files at a time.</p>
Copy a file from an Agile Drive folder to a non-Agile Drive folder	<p>In an Agile Drive folder, select the desired file.</p> <p>Select Copy from the right-click menu, or select Copy from Edit Menu of MS Windows Explorer.</p> <p>Navigate to the desired non-Agile Drive folder.</p> <p>Select Paste from the right-click menu, or, select Paste from Edit Menu of MS Windows Explorer.</p>
View folder properties	<p>To view general properties of a folder in Agile Drive, select Properties from right-click menu.</p>

### 3.3 Opening files in Agile Drive

Agile Drive supports opening *only* Microsoft Office format files from the Internet Explorer.

#### To open files in Agile Drive:

- For HTML, DOC, RTF, XLS, PPT and other Microsoft formats which support Microsoft clients: Double-click the file or open within Internet Explorer after authentication.

---

**Note:** Text and PDF files do not open in Agile Drive.

---

#### To open text and PDF files:

1. Select the files from the Agile Drive folder.
2. Drag and drop the files to the desktop.
3. Click Open.

#### To open files in Adobe Reader or Notepad:

1. Select the file from the Agile Drive folder.
2. Click File > Open.
3. Navigate to Network Places > Agile Drive.
4. Click Open.

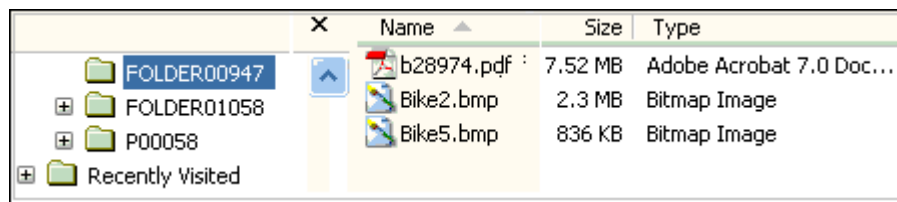
## 3.4 Tracking Versions

Versioning applies to Design objects and File Folder objects of Agile PLM. When you add or delete a file attachment from a Design object or a File Folder object, Agile PLM retains the original status of these attachments as a version.

Agile Drive displays these versions as numbered folders under Previous Versions Folder in the 'versioned' Agile object, with Version Number 1 being the oldest/earliest version of the said Agile object.

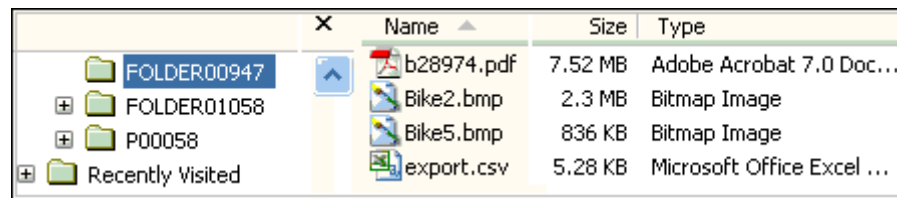
This can best be understood with the example below:

1. In Agile Drive, select FOLDER00947, as shown in Screen 1. It contains three files.  
FOLDER00947 in Agile Drive is an Agile PLM File Folder Object, which has three file attachments.



Name	Size	Type
b28974.pdf	7.52 MB	Adobe Acrobat 7.0 Doc...
Bike2.bmp	2.3 MB	Bitmap Image
Bike5.bmp	836 KB	Bitmap Image

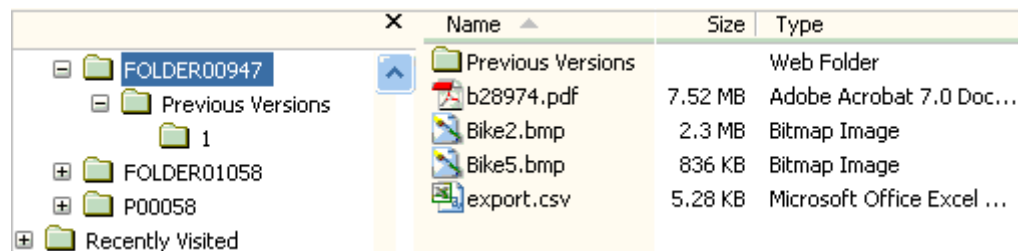
2. Add a file in FOLDER00947. The folder now contains four files.



Name	Size	Type
b28974.pdf	7.52 MB	Adobe Acrobat 7.0 Doc...
Bike2.bmp	2.3 MB	Bitmap Image
Bike5.bmp	836 KB	Bitmap Image
export.csv	5.28 KB	Microsoft Office Excel ...

3. Wait for a few seconds and refresh (press Ctrl+F5) the Explorer view.

A Previous Versions folder, and a sub-folder numbered 1, appears under FOLDER00947. This implies FOLDER00947 is the 'latest' version of File Folder object, which now has four file attachments.

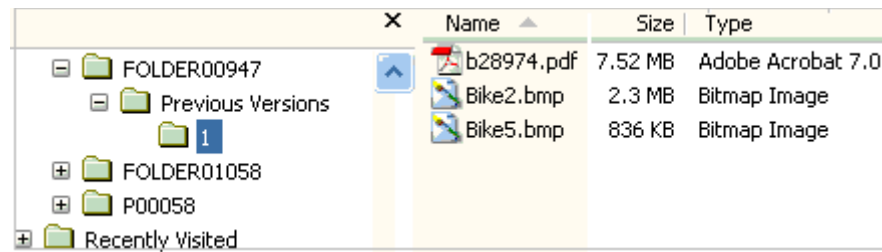


Name	Size	Type
Previous Versions		Web Folder
1		
b28974.pdf	7.52 MB	Adobe Acrobat 7.0 Doc...
Bike2.bmp	2.3 MB	Bitmap Image
Bike5.bmp	836 KB	Bitmap Image
export.csv	5.28 KB	Microsoft Office Excel ...

4. Go to the folder 1 under Previous Versions folder.

It contains the three files that originally existed in FOLDER00947 before you added the fourth file. This implies, the 'earlier' version of the File Folder object had three file attachments.

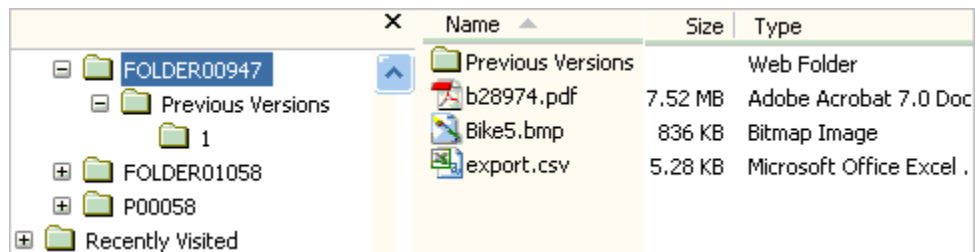




Name	Size	Type
b28974.pdf	7.52 MB	Adobe Acrobat 7.0
Bike2.bmp	2.3 MB	Bitmap Image
Bike5.bmp	836 KB	Bitmap Image

5. Now, go back to FOLDER00947, which is the 'latest' version. **Delete** one of the files, say Bike2.bmp. This folder now has three files.

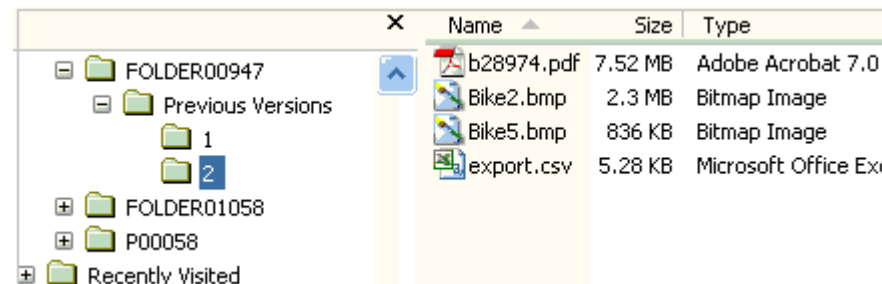
This implies, you have deleted a file attachment from the File Folder object.



Name	Size	Type
Previous Versions		Web Folder
b28974.pdf	7.52 MB	Adobe Acrobat 7.0 Doc
Bike5.bmp	836 KB	Bitmap Image
export.csv	5.28 KB	Microsoft Office Excel .

6. Wait for a few seconds and refresh (press Ctrl+F5) the Explorer view.

The Previous Versions folder now has two sub-folders numbered 1 and 2. This implies, the Agile Drive folder number 2 is the 'previous' version of the said File Folder object, FOLDER00947, and it has the four file attachments that existed before you deleted one.



Name	Size	Type
b28974.pdf	7.52 MB	Adobe Acrobat 7.0 .
Bike2.bmp	2.3 MB	Bitmap Image
Bike5.bmp	836 KB	Bitmap Image
export.csv	5.28 KB	Microsoft Office Exc

Likewise, each time you add or delete any file in an Agile Drive folder (corresponding to a Design object or File Folder object), it maintains the original files in version numbered folders under the Previous Versions folder.

---

**Note:** You cannot add or delete files from any of the Previous Version folders.

---

If you delete, or purge, a version folder in Agile, the deleted or purged version folder does not appear in the corresponding Agile Drive folder.

---

**Note:** The number of version folders that you see depends on the settings you have configured in Agile PLM. Refreshing (Ctrl+F5) the view in MS Windows XP Explorer does not display the changed versions in the folders (left) pane, although the changed versions appear in the right pane.

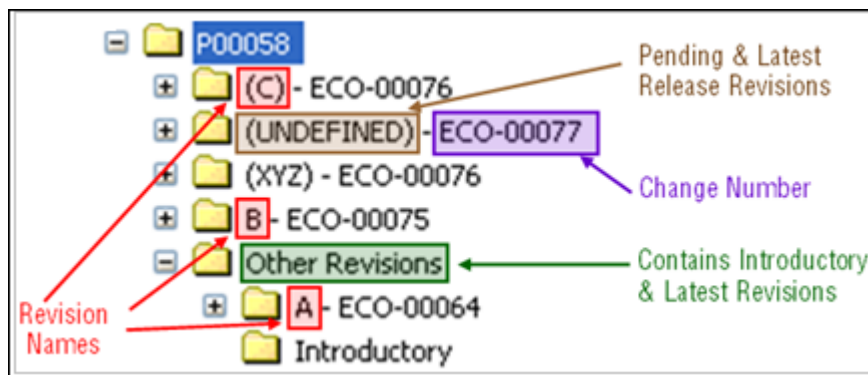
---

## 3.5 Traversing Item Revisions

A revision in Agile Drive appears as a 'prefix' to the Change object. The structure of Agile Drive folder, thus, appears as follows:

<Revision Name> - <Change Object Name>

**Example:** In the image below, the Agile Drive folder **B - ECO-00075** corresponds to **Revision B** of Change Object **ECO-00075** associated to Agile object **P00058**.



The Agile objects, whose revisions are not yet defined in Agile are represented as <UNDEFINED> - <Change Object Name>

**Example:** In the above image, since the new Change object, **ECO-00077** has not been assigned a Revision Number, it is in the Pending state and hence appears as **(UNDEFINED) - ECO-00077** in Agile Drive.

When you create a Part, its revision state is **Introductory**. When you bring about a change to this Part, a **Revision** is created, which is identified by a **Revision Number**. Once the Revision Number is assigned, it remains in the pending state until released. The pending state is represented by enclosing the revision number in brackets.

Example: In this image, **(C) - ECO-00076**.

Other than the latest released revision, Agile Drive moves the 'earlier released revisions' into an Agile Drive folder called **Other Revisions**. Every time an Agile object goes through a Change, the latest revision appears as an Agile Drive folder under the folder for the main object.

**Example:** In the above image, the Agile Object **P00058** had undergone a change by means of Change object **ECO-00064**, which was revised only once as **Rev-A**. Later, it went through another change, **ECO-00075**, which was revised to **Rev-B**.

---

**Note:** Agile Drive does *not* display the structure of **Design** objects.

---

### 3.6 Traversing a Bill of Material

The Bill of Material (BOM) of an Agile object appears as folders under its corresponding Change object.

In a BOM, the file attachments of a Parent object are located in the Change object. For example, the file attachments of Part **P00058** are located under the folder **B - ECO-00075**, which corresponds to the Change object of this Part.

The file attachments of a Child object are located in its corresponding folder. For example, **100-01014-A** is the child object of **P00058**.

