

# **Oracle Insurance Datamarts for Health**

## **Administrator Reference**

version 9.31

Part number: E39905-01

March 2013



Copyright © 2011, 2012, 2013 Oracle and/or its affiliates. All rights reserved.

This software and related documentation are provided under a license agreement containing restrictions on use and disclosure and are protected by intellectual property laws. Except as expressly permitted in your license agreement or allowed by law, you may not use, copy, reproduce, translate, broadcast, modify, license, transmit, distribute, exhibit, perform, publish, or display any part, in any form, or by any means. Reverse engineering, disassembly, or decompilation of this software, unless required by law for interoperability, is prohibited.

The information contained herein is subject to change without notice and is not warranted to be error-free. If you find any errors, please report them to us in writing.

If this software or related documentation is delivered to the U.S. Government or anyone licensing it on behalf of the U.S. Government, the following notice is applicable:

#### **U.S. GOVERNMENT RIGHTS**

Programs, software, databases, and related documentation and technical data delivered to U.S. Government customers are “commercial computer software” or “commercial technical data” pursuant to the applicable Federal Acquisition Regulation and agency-specific supplemental regulations. As such, the use, duplication, disclosure, modification, and adaptation shall be subject to the restrictions and license terms set forth in the applicable Government contract, and, to the extent applicable by the terms of the Government contract, the additional rights set forth in FAR 52.227-19, Commercial Computer Software License (December 2007). Oracle USA, Inc., 500 Oracle Parkway, Redwood City, CA 94065.

This software is developed for general use in a variety of information management applications. It is not developed or intended for use in any inherently dangerous applications, including applications which may create a risk of personal injury. If you use this software in dangerous applications, then you shall be responsible to take all appropriate fail-safe, backup, redundancy, and other measures to ensure the safe use of this software. Oracle Corporation and its affiliates disclaim any liability for any damages caused by use of this software in dangerous applications.

Oracle is a registered trademark of Oracle Corporation and/or its affiliates. Other names may be trademarks of their respective owners.

This software and documentation may provide access to or information on content, products, and services from third parties. Oracle Corporation and its affiliates are not responsible for and expressly disclaim all warranties of any kind with respect to third-party content, products, and services. Oracle Corporation and its affiliates will not be responsible for any loss, costs, or damages incurred due to your access to or use of third-party content, products, or services.

Where an Oracle offering includes third party content or software, we may be required to include related notices. For information on third party notices and the software and related documentation in connection with which they need to be included, please contact the attorney from the Development and Strategic Initiatives Legal Group that supports the development team for the Oracle offering. Contact information can be found on the Attorney Contact Chart.

The information contained in this document is for informational sharing purposes only and should be considered in your capacity as a customer advisory board member or pursuant to your beta trial agreement only. It is not a commitment to deliver any material, code, or functionality, and should not be relied upon in making purchasing decisions. The development, release, and timing of any features or functionality described in this document remains at the sole discretion of Oracle.

This document in any form, software or printed matter, contains proprietary information that is the exclusive property of Oracle. Your access to and use of this confidential material is subject to the terms and conditions of your Oracle Software License and Service Agreement, which has been executed and with which you agree to comply. This document and information contained herein may not be disclosed, copied, reproduced, or distributed to anyone outside Oracle without prior written consent of Oracle. This document is not part of your license agreement nor can it be incorporated into any contractual agreement with Oracle or its subsidiaries or affiliates.

## CHANGE HISTORY

Release	Version	Changes
10.12.2.0.0	9.29	<ul style="list-style-type: none"><li>• Added change history paragraph.</li><li>• Added description for Oracle Business Intelligence translations external file (WBX_OBIEE_TRANSLATIONS.csv)</li><li>• Added description for configuring generic structure of claim properties</li><li>• Added description how to configure DWH_OHI_BI.rpd connection pools.</li></ul>
10.12.3.0.0	9.30	<ul style="list-style-type: none"><li>• Added new fact table DWH_ONDERHANDEN_WERK (Work in Progress Claims)</li><li>• Replaced generic role OZG_ROL_SELECT by secure role OBD_SELECT_ROLE.</li></ul>
10.13.1.0.0	9.31	<ul style="list-style-type: none"><li>• Added Exadata Support, Migrating OWB from single instance to multi node RAC, added OBI_SELECT_USER</li><li>• Added new batch Correct monitorcode (ZRGO005S)</li></ul>

# CONTENTS

<b>Change History</b>	<b>ii</b>
<b>Introduction</b>	<b>5</b>
Important documentation	5
Software used	5
<b>Overview</b>	<b>6</b>
<b>Part I Installation</b>	<b>7</b>
Introduction	7
Setting up Oracle Insurance Datamarts for Health environment	7
OS set-up	7
Software installation	7
Creation of an Oracle Insurance Datamarts for Health database	8
Database users	10
Database link	11
Database directories	11
General instructions	11
<b>Installation of Oracle Warehouse Builder (OWB) Repository</b>	<b>12</b>
Client installation	12
Server installation	12
Software	12
Repository	12
<b>Generation and installation of Oracle Insurance Datamarts for Health objects.</b>	<b>21</b>
Installation	21
Release	21
System parameters	21
External files	23
<b>Set-up of Oracle Business Intelligence Enterprise Edition environment</b>	<b>26</b>
Software installation	26
Oracle Business Intelligence Customizations	26
Creating a non privileged user: OBI_SELECT_USER	26
Installation of Oracle Insurance Datamarts for Health Repository (RPD)	26
Configure Usage Tracking	31

<b>Part II Loading</b>	<b>36</b>
Introduction	36
Extract OHI Back Office (ZRGOE01S)	36
Transform data (ZRGOS01S)	39
Load OHI Business Intelligence (ZRGOD01S)	40
Undo loadruns (ZRGO004S)	40
Correct monitorcode (ZRGO005S)	42
Checks	42
Audit information	43
Log information	43
Resolving errors	44
Checking status request load scripts	44
Verifying the load	45
<b>Part III Application management</b>	<b>46</b>
Introduction	46
Functional management	46
Logging and validation	46
Authorization	50
Configuration of generic structure for claim properties	50
Technical management	56
Cleaning up OWB Audit data	56
New releases of Oracle Insurance Datamarts for Health	56
Reorganization of tables	57
Compression of partitioned fact tables.	57
OWB Runtime service	58
<b>Part IV Appendices</b>	<b>59</b>
Appendix A: Cloning Oracle Insurance Datamarts for Health environments	59
Appendix B: Use of WBX_LAADRUN_ERRORS_VW and WBX_MAPPINGS_VW views.	59
Appendix C: Exadata Usage	61
Appendix D: OWB 11gR2 post-cloning process for OHI Business Intelligence	64
Appendix E: Migrating OWB from single instance to multi node RAC	68

## INTRODUCTION

The purpose of this document is to give an overview of the architecture of Oracle Insurance Datamarts for Health, as well as information on installation and management.

This document may be used as both a training material and a reference material. It is assumed that the reader has a basic knowledge of the Oracle tools being used.

With this document the Oracle Insurance Datamarts for Health administrator should be in a position to install and maintain the Data Warehouse.

## IMPORTANT DOCUMENTATION

The documentation below is important for the activities of the functional administrator. These describe the design of Oracle Insurance Datamarts for Health and contain information that is (potentially) required for installation and management.

1. Standard product manuals from Oracle DBMS, Oracle Warehouse Builder and Oracle Business Intelligence Enterprise Edition (OBI EE). Documentation on these Oracle products can be found on the Oracle support website (<http://support.oracle.com>)
2. Certification form 10.13.1.0
3. CTA13508.doc: Oracle Health Insurance Installation, Configuration and DBA Manual
4. CTA13535.doc: Oracle Health Insurance Security Aspects

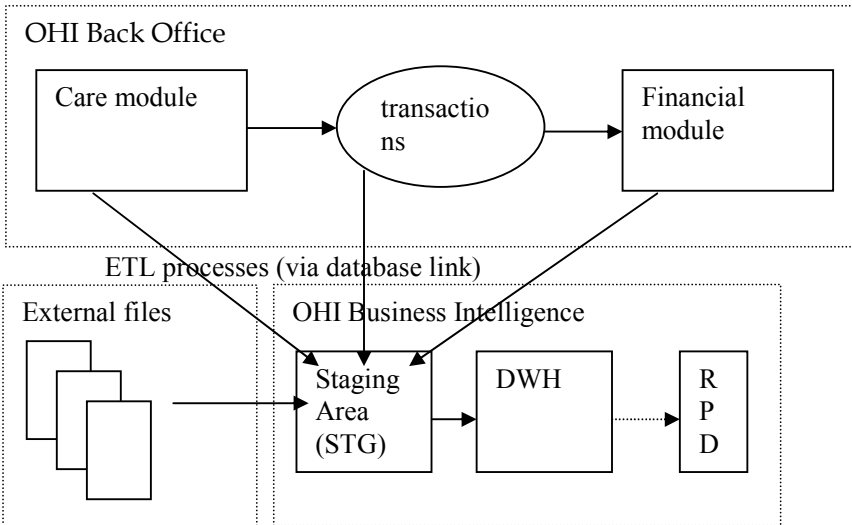
## SOFTWARE USED



Certifications matrix 10.13.1.0

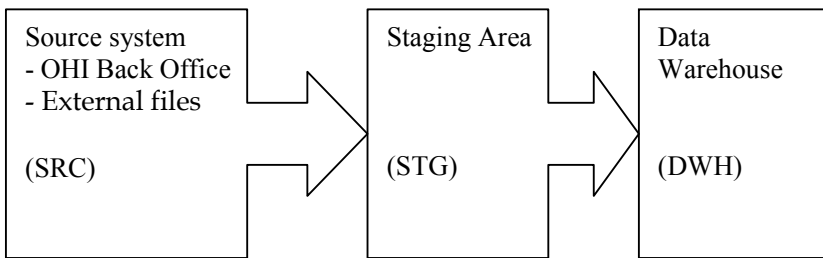
## OVERVIEW

The architecture of Oracle Insurance Datamarts for Health broadly looks like this:



Oracle Insurance Datamarts for Health makes use of three data areas. These data areas have a logical mutual connection. Their goal is to supply the data from the sources in a verified manner for reading in, checking and publishing.

The figure below shows the mutual relationships between the various data areas:



Data from the source system is always moved through the system in the following way:

1. 'Raw' data is loaded into the staging area.
2. Validated data is moved from the staging area to the Data Warehouse. There, the data is stored optimally for querying purposes and brought into alignment with the previously-loaded data.



# PART I INSTALLATION

## INTRODUCTION

Various components make up Oracle Insurance Datamarts for Health. This chapter contains a short description of each.

The set-up and installation of these components is dealt with in the following paragraphs.

## SETTING UP ORACLE INSURANCE DATAMARTS FOR HEALTH ENVIRONMENT

### OS set-up

Oracle Insurance Datamarts for Health runs on a database server. The load run of Oracle Insurance Datamarts for Health requires that there is an application server on which the OHI Back Office application is installed. Oracle Insurance Datamarts for Health makes use of OHI Back Office functionality including, for example, the batch scheduler for starting and scheduling the load run.

For set-up of the application and database server environment, including set-up of the environmental variables and directory structure, see:



Oracle Health Insurance Installation, Configuration and DBA Manual  
(chapter 3)

### Software installation

#### Database

Oracle Insurance Datamarts for Health must be installed in a dedicated database. It is not permitted to install Oracle Insurance Datamarts for Health in the same database as OHI Back Office, as Oracle Insurance Datamarts for Health is a Data Warehouse and OHI Back Office is an OLTP system. Different user settings are used in each database.

**Please note** that the JServer option must also be installed in the database (and the *java\_pool\_size* parameter is filled in in "init.ora"). This is a requirement to be able to install the OWB Runtime environment.

For more details regarding the installation of the database software, see:



Oracle Health Insurance Installation, Configuration and DBA Manual  
(chapter 2)

#### Oracle Warehouse Builder

An OWB Runtime environment is required in order to be able to execute the Oracle Insurance Datamarts for Health ETL process. As of Oracle 11gR1 the OWB software is installed at the same time as the Oracle 11g software in the Oracle home directory of the database.

Oracle Insurance Datamarts for Health releases and patches are installed from an application server. This application server can be used in 2 configurations. As stated before

1. Configuration with database server and application server on different hosts (separate database and application server)

Because OWB is part of the complete Oracle 11g software installation, it was necessary in release 2010.01.0.0000 through release 2011.01.0000 to perform a full Oracle 11g software installation on both the application server and the database server. As of release 2011.01.0.0000, the installation software of Oracle Health Insurance only uses the OWB software in the 11g Oracle Home on the database server for the installation of Oracle Insurance Datamarts for Health. The installation of Oracle Insurance Datamarts for Health no longer uses the OWB software on the application server. Therefore, installation of the full Oracle 11g software on the application server is no longer necessary.

2. Configuration with database server and application server on same host (combined database and application server)

There are no changes for this configuration compared to previous releases.

For the right version of the OWB software, see:



Certifications matrix 10.13.1.0

## Creation of an Oracle Insurance Datamarts for Health database

A database needs to be created first before Oracle Insurance Datamarts for Health can be installed.

### Parameters

The following database parameters must be set to the specified values:

```
AQ_TM_PROCESSES=1                #For batch scheduler queue time monitoring
DB_BLOCK_SIZE=16384 or DB_BLOCK_SIZE=8192
NLS_LANGUAGE=DUTCH                #DUTCH or AMERICAN
NLS_NUMERIC_CHARACTERS=',' '.'    #Set to the desired combination
NLS_SORT=BINARY                  #For performance reasons
NLS_TERRITORY='THE NETHERLANDS'  #THE NETHERLANDS or AMERICA
OPTIMIZER_MODE=ALL_ROWS          #For performance reasons
OS_AUTHENT_PREFIX=''             #For externally ident. Users
PGA_AGGREGATE_TARGET=<value>     #Automatic SQL Execution Memory Management
REMOTE_OS_AUTHENT=TRUE           #Permit externally ident. Users
STAR_TRANSFORMATION_ENABLED=TRUE #For performance reasons
STATISTICS_LEVEL=TYPICAL         #For self-tuning capabilities
UNDO_MANAGEMENT=AUTO             #Automatic Undo
WORKAREA_SIZE_POLICY=AUTO        #Automatic SQL Execution Memory Management
```

The following database parameters must be set to the specified values at a *minimum*: When a *maximum* value applies, this is specified:

```
DML_LOCKS=500
OPEN_CURSORS=500
SESSION_CACHED_CURSORS=500
PROCESSES=200
JOB_QUEUE_PROCESSES=10
```

As well as the parameters above, there is also a parameter that is extremely important for parallel processing during both the loading process and for queries by end-users:

```
PARALLEL_MAX_SERVERS=number
```

If this setting is left out of the init.ora, it will be set to a very high value by default. It is therefore highly advisable to set a value for this parameter. However, the correct value for this parameter depends on the system (speed of I/O, number and speed of CPUs, among other things). Unfortunately, there is no hard

and fast rule. More details on setting these parameters can be found on Oracle Support under note 280939.1 "Checklist for Performance Problems with Parallel Execution". The manual 'Oracle Database Data Warehousing Guide' describes how the execution of parallel statements works. To find out whether parallel statements have actually been executed serially due to a lack of parallel servers, the following statement, for example, can be used:

```
select * from gv$sysstat where name like 'Parallel operation%';
```



**Note 1:** In the production environment it is *not* permitted to have activated the database events, unless explicitly requested by Oracle Health Insurance Development or Oracle Support Services.



**Note 2:** If user settings that have not been recommended or prescribed are used in the Database or Application Server, the customer may be asked to reset these user settings if problems arise that may be connected.

The underlying reason for this is to avoid unnecessary instability risks. Use in custom applications also requires special consideration.



**Tip 1:** Oracle Health Insurance recommends the use of *Oracle Resource Management*.

The script `OZGI002S.sql` can be used to set a standard configuration. Set the following database parameter:

```
RESOURCE_MANAGER_PLAN="SYSTEM_PLAN"
```



**Tip 2:** Oracle Health Insurance recommends the use of the `WE8ISO8859P15` character set, which supports the use of the Euro symbol €.

This character set can be chosen when creating the database.

To change the character set of an existing database, see



Migration of database character set

## Tablespaces

The table spaces below must be created for data and indexes:

Tablespace	Initial	Next
STG_STAD	128 Kb	128 Kb
STG_STAI	128 Kb	128 Kb
STG_DYND	4 Mb	4 Mb
STG_DYNI	4 Mb	4 Mb
DWH_STAD	128 Kb	128 Kb
DWH_STAI	128 Kb	128 Kb
DWH_DYND	4 Mb	4 Mb
DWH_DYNI	4 Mb	4 Mb
OZG_DIM_SYS_TAB	128 Kb	128 Kb
OZG_DIM_SYS_IND	128 Kb	128 Kb
OZG_FACT_SYS_TAB	128 Kb	128 Kb
OZG_FACT_SYS_IND	128 Kb	128 Kb
OZG_LOG_TAB	128 Kb	128 Kb
OZG_LOG_IND	128 Kb	128 Kb
OWBSYS	2048Mb	32 Mb
Tablespace	Initial	Next
STG_STAD	128 Kb	128 Kb
STG_STAI	128 Kb	128 Kb
STG_DYND	4 Mb	4 Mb
STG_DYNI	4 Mb	4 Mb
DWH_STAD	128 Kb	128 Kb
DWH_STAI	128 Kb	128 Kb
DWH_DYND	4 Mb	4 Mb

Tablespace	Initial	Next
DWH_DYNI	4 Mb	4 Mb
OZG_DIM_SYS_TAB	128 Kb	128 Kb
OZG_DIM_SYS_IND	128 Kb	128 Kb
OZG_FACT_SYS_TAB	128 Kb	128 Kb
OZG_FACT_SYS_IND	128 Kb	128 Kb
OZG_LOG_TAB	128 Kb	128 Kb
OZG_LOG_IND	128 Kb	128 Kb
OWBSYS	2048Mb	32 Mb

The created table spaces must comply with the following requirements:

1. Locally Managed
2. System managed extent allocation
3. Automatic Segment Space Management
4. 8K or 16K blocksize



**Note 3:** Oracle Health Insurance requires the use of a *default temporary* tablespace for temporary segments.

## Database users

The following users should be created in the Oracle Insurance Datamarts for Health database:

User	ID	Description
Oracle Insurance Datamarts for Health repository owner	OWBSYS	This is the owner of the OWB repository on the Oracle Insurance Datamarts for Health database server. This user is created during the installation of the OWB 11g software. The data/index tablespace is OWBSYS.
Oracle Insurance Datamarts for Health Workspace owner	OHI_BI_WS_OWN	This is the owner or the workspace in which the Oracle Insurance Datamarts for Health objects have been created and are executed.
Oracle Insurance Datamarts for Health owner	OBD_OWN	This is the owner of the Oracle Insurance Datamarts for Health objects. <b>This user must be created using the Oracle Insurance Datamarts for Health installation software</b> with USERS as data/index tablespace
Batch User	BATCH	This is the user with which the Batch Scheduler scripts that are requested in the OHI Back Office application are executed. This user does not own any objects and therefore does not need its own separate tablespace. The user should be 'externally identified' so that the loading process can be started remotely from the OHI Back Office application server. <b>This user is created by the Oracle Insurance Datamarts for Health installation software.</b> (see 'Oracle Health Insurance Security Aspects' document on iProjects Files for security of the BATCH account)

The following user should be created in the OHI Back Office database:

User	ID	Description
Select user for extractions	OBD_SELECT_USER	This is the user that performs the selections on the OHI Back Office database. This user should be assigned the following privileges:  CREATE SESSION OBD_SELECT_ROLE SELECT ON V_\$DATABASE

## Database link

A database link should be created from the Oracle Insurance Datamarts for Health database to the OHI Back Office database with the name SRC\_OPENZORG. The link should be created in the following way (under user OBD\_OWEN) in the Oracle Insurance Datamarts for Health database:

```
create database link SRC_OPENZORG
connect to OBD_SELECT_USER
identified by [password]
using '[servicename]'
;
```

## Database directories

For a number of external tables the following database directories need to be created under the OBD\_OWEN schema:

Directory	Value	Description
OBD_INPUT	Value of \$OZG_BASE	This is the location of the source files that are used for the external tables
OBD_LOG	/tmp	This is the location for the log, discard and bad files of the external tables.

Example:

```
if $OZG_BASE = /ozg/app/oracle/product/Zorg/oton
```

```
create or replace directory OBD_INPUT
as '/ozg/app/oracle/product/Zorg/oton';
```

## General instructions

For instructions relating to active management of Oracle Insurance Datamarts for Health, see:



Oracle Health Insurance Installation, Configuration and DBA Manual

(chapter 5)

## INSTALLATION OF ORACLE WAREHOUSE BUILDER (OWB) REPOSITORY

### CLIENT INSTALLATION

Oracle Insurance Datamarts for Health was developed with the help of OWB. The metadata relating to the Oracle Insurance Datamarts for Health objects is stored in an OWB (Design) repository. This doesn't play a part in the use of Oracle Insurance Datamarts for Health. A client installation is therefore not necessary.

### SERVER INSTALLATION

#### Software

From Oracle Database 11g Release 1, OWB is automatically installed in the same Oracle home as the database. This happens at the same time as the installation of the Oracle database software. As of release 2011.01, the OWB software only has to be present on the database server. (see also Software Installation - Oracle Warehouse Builder)

#### Repository

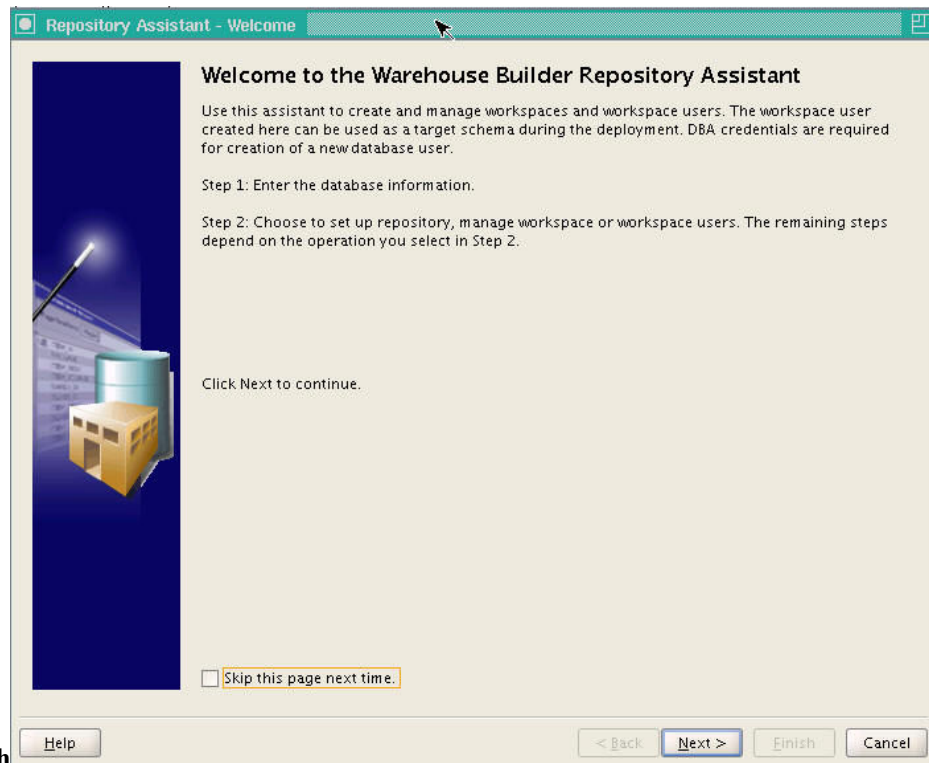
An OWB repository has to be present on the Oracle Insurance Datamarts for Health database server in order to run the mappings generated by OWB. Information is stored in the repository relating to installation and running of mappings.

Installation of an OWB repository is done as follows:

- 1) **. ozg\_init.env** <ohi\_db\_name>
- 2) **. ozg\_init.env DB11G**
- 3) Set read (R) rights for OTHERS on the whole of \$ORACLE\_HOME/owb/bin/unix and explicit execution (X) rights for OTHERS on OMBPlus.sh and setowbenv.sh in the \$ORACLE\_HOME/owb/bin/unix directory.
- 4) **Login to the database with SYS (as SYSDBA)**
- 5) **create tablespace OWBSYS logging**  
    **datafile '<datafiledir>/<datafilename>.dbf'**  
    **size 2048M**  
    **autoextend on**  
    **next 32M**  
    **extent management local;**
- 6) Install the new OWB 11g repository with:  
    **@\$ORACLE\_HOME/owb/UnifiedRepos/cat\_owb.sql OWBSYS**
- 7) Unlock the OWBSYS account and set a password:  
    **alter user OWBSYS account unlock;**  
    **alter user OWBSYS identified by <password>;**  
    **grant restricted session to OWBSYS;**

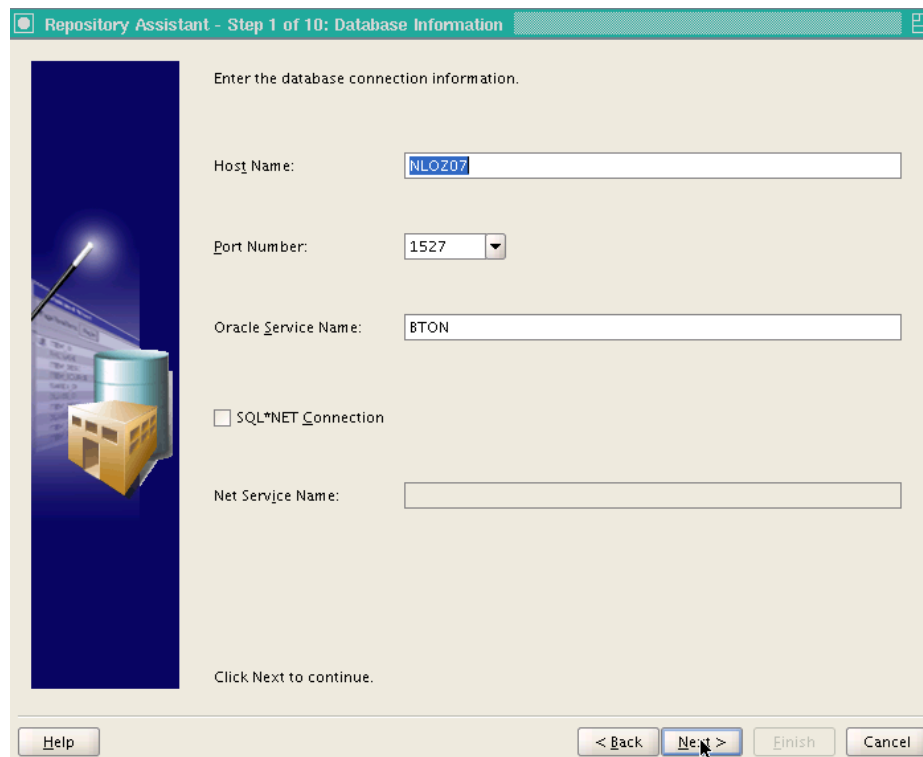
Exit;

8) `cd $ORACLE_HOME/owb/bin/unix`



9) `./reposinst.sh`

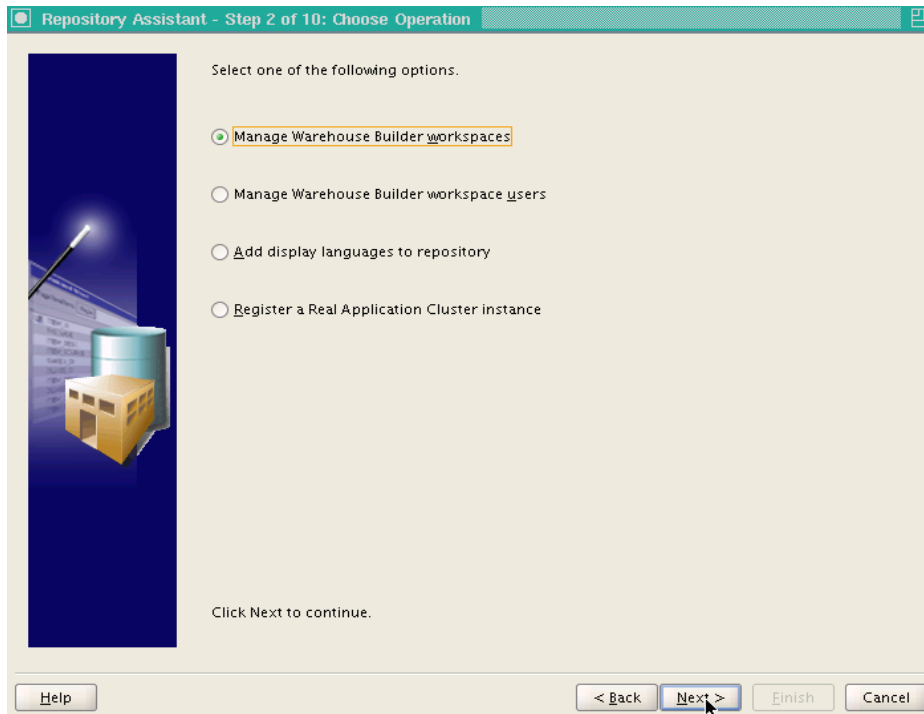
Click on Next>



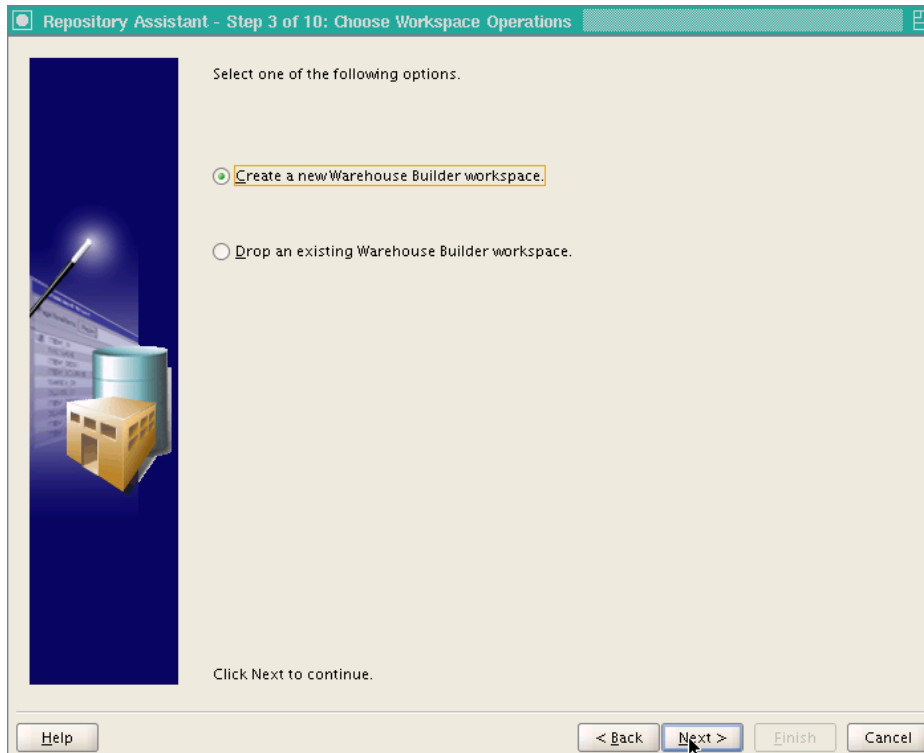
Host Name: Name of the host server

Port Number: Port of the listener for the database

Oracle Service Name: `<ohi_db_name>`  
Then click on Next>

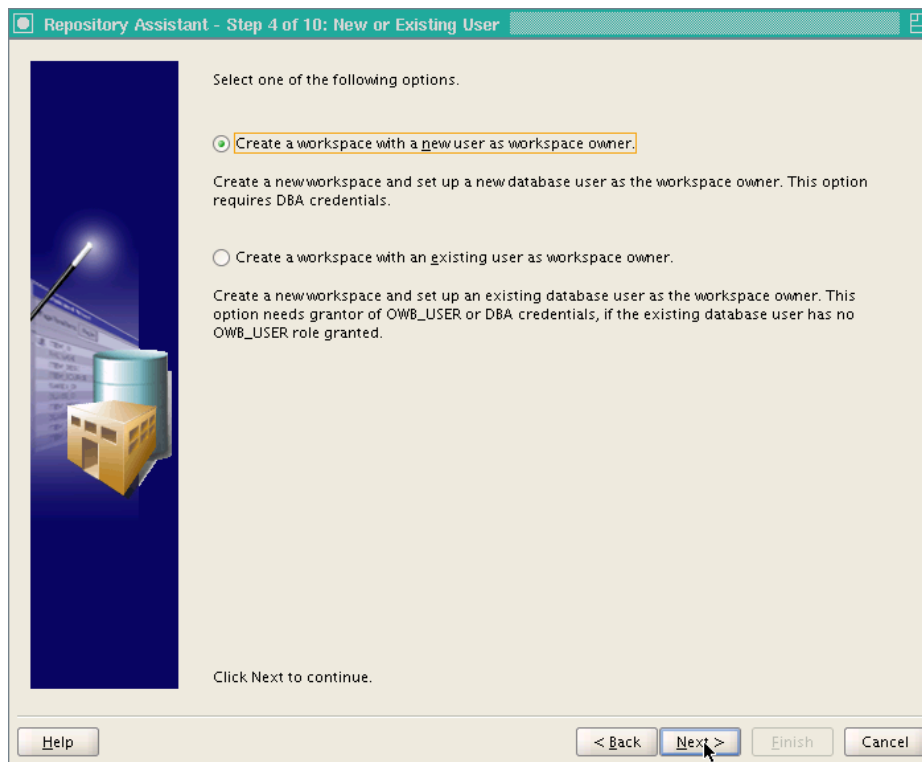


Choose "Manage Warehouse Builder workspaces" and click on Next>

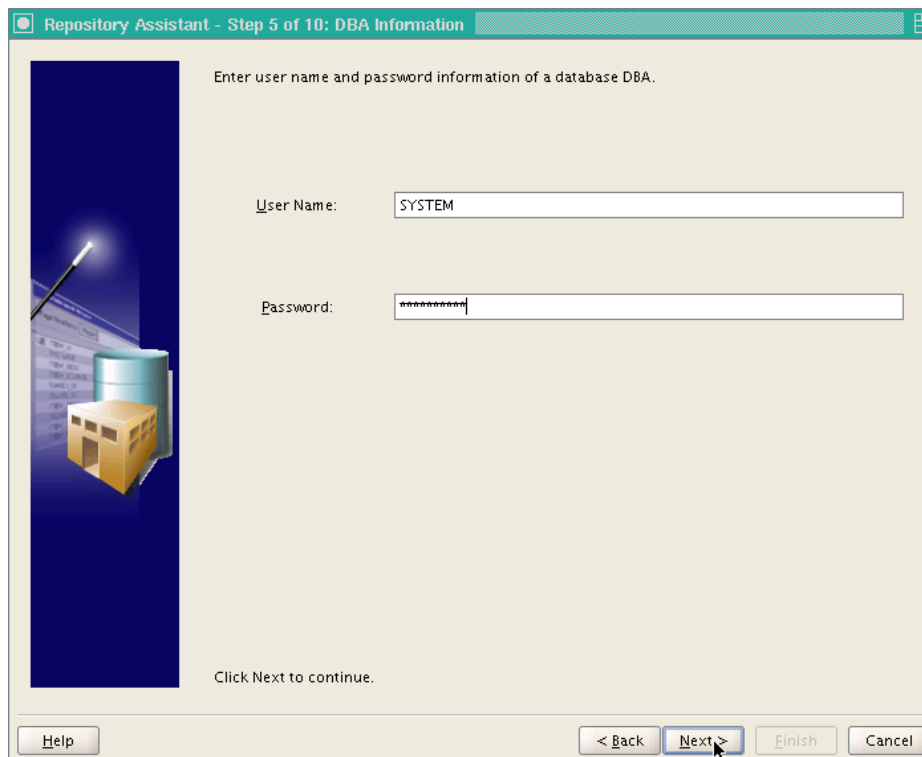


Choose "Create a new Warehouse Builder workspace" and click on Next>





Choose "Create a workspace with a new user as workspace owner" and click on Next>



Enter the password for the SYSTEM user and click on Next>

Repository Assistant - Step 6 of 10: Workspace Owner (New)

Create a new database user as a workspace owner. Enter user name, user password and workspace name.

Workspace Owner's User Name: ohi\_bi\_ws\_own

Workspace Owner's Password: \*\*\*\*\*

Workspace Owner's Password Confirmation: \*\*\*\*\*

Workspace Name: ohi\_bi\_ws

Click Next to continue.

Help < Back Next > Finish Cancel

Workspace Owner's User Name: ohi\_bi\_ws\_own  
 Workspace Owner's Password: <password>  
 Workspace Owner's Password confirmation: <password>  
 Workspace Name: ohi\_bi\_ws

Click on Next>

Repository Assistant - Step 7 of 10: OWBSYS Information

Enter the Password of OWBSYS.

User Name: OWBSYS

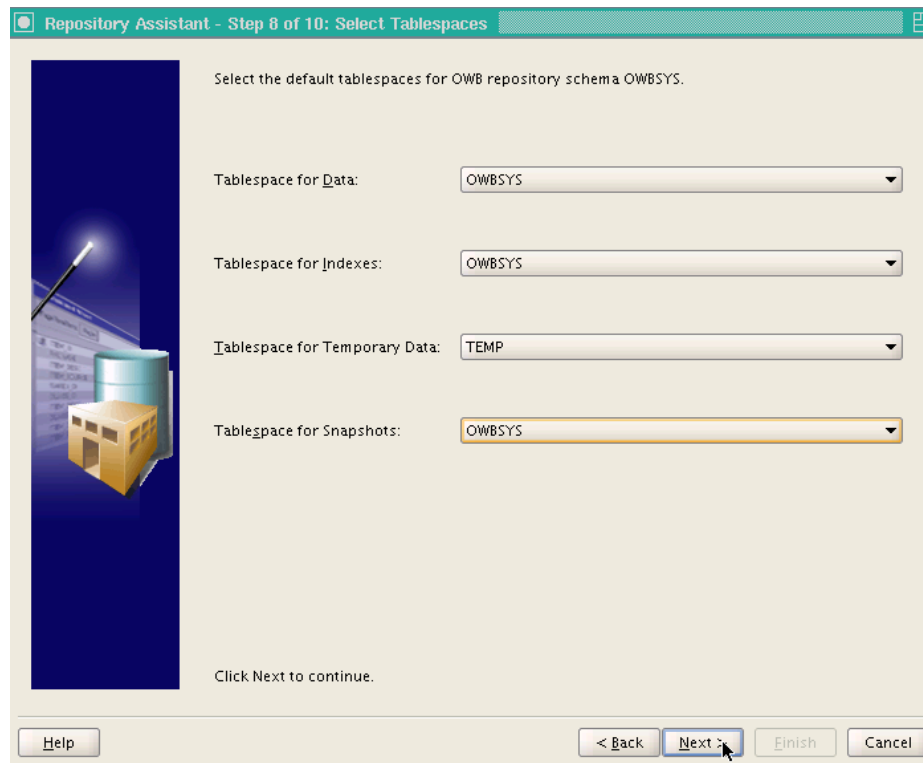
Password: \*\*\*\*\*

Click Next to continue.

Help < Back Next > Finish Cancel

User Name: OWBSYS  
 Password: <password>

Click on Next>



Repository Assistant - Step 8 of 10: Select Tablespaces

Select the default tablespaces for OWB repository schema OWBSYS.

Tablespace for Data: OWBSYS

Tablespace for Indexes: OWBSYS

Tablespace for Temporary Data: TEMP

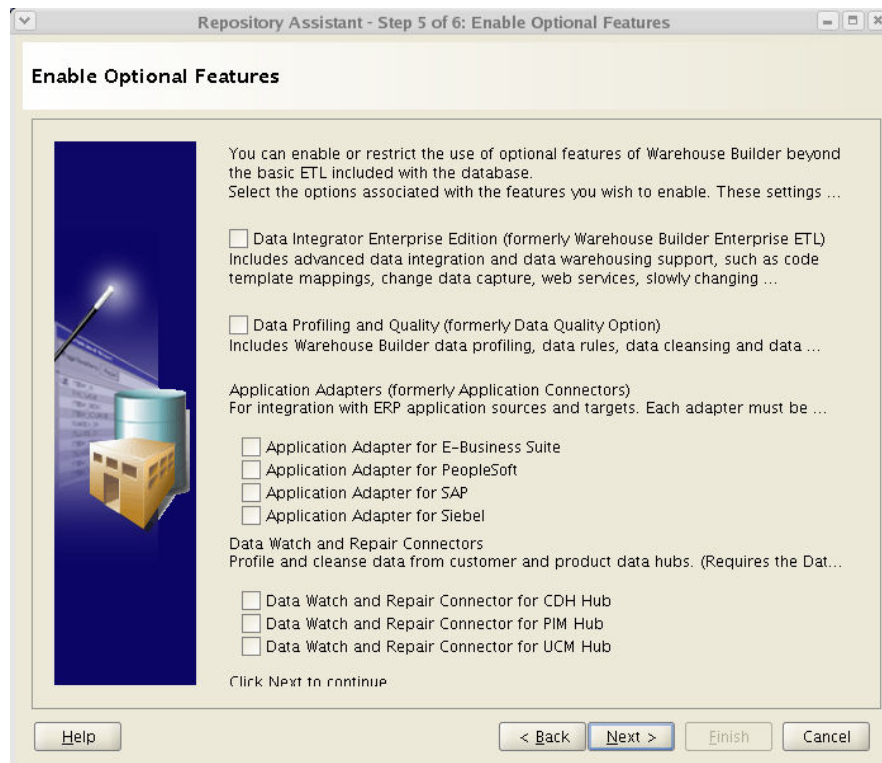
Tablespace for Snapshots: OWBSYS

Click Next to continue.

Help < Back Next > Finish Cancel

Tablespace for Data: OWBSYS  
 Tablespace for Indexes: OWBSYS  
 Tablespace for Temporary Data: TEMP  
 Tablespace for Snapshots: OWBSYS

Click on Next>



Repository Assistant - Step 5 of 6: Enable Optional Features

**Enable Optional Features**

You can enable or restrict the use of optional features of Warehouse Builder beyond the basic ETL included with the database. Select the options associated with the features you wish to enable. These settings ...

☐ Data Integrator Enterprise Edition (formerly Warehouse Builder Enterprise ETL)  
Includes advanced data integration and data warehousing support, such as code template mappings, change data capture, web services, slowly changing ...

☐ Data Profiling and Quality (formerly Data Quality Option)  
Includes Warehouse Builder data profiling, data rules, data cleansing and data ...

Application Adapters (formerly Application Connectors)  
For integration with ERP application sources and targets. Each adapter must be ...

☐ Application Adapter for E-Business Suite  
☐ Application Adapter for PeopleSoft  
☐ Application Adapter for SAP  
☐ Application Adapter for Siebel

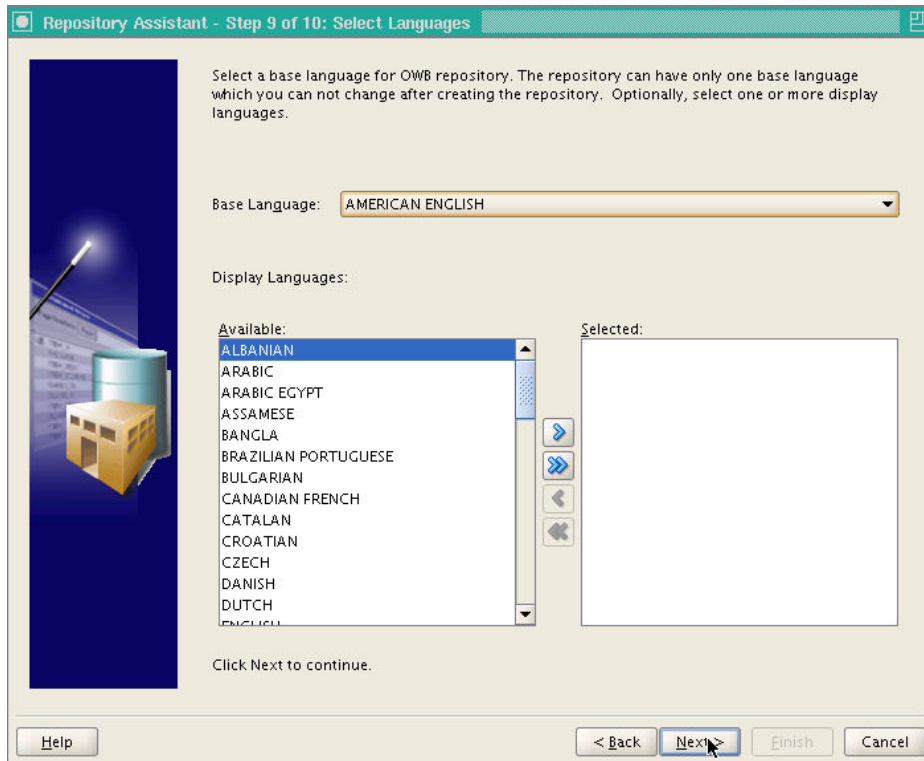
Data Watch and Repair Connectors  
Profile and cleanse data from customer and product data hubs. (Requires the Dat...

☐ Data Watch and Repair Connector for CDH Hub  
☐ Data Watch and Repair Connector for PIM Hub  
☐ Data Watch and Repair Connector for UCM Hub

Click Next to continue

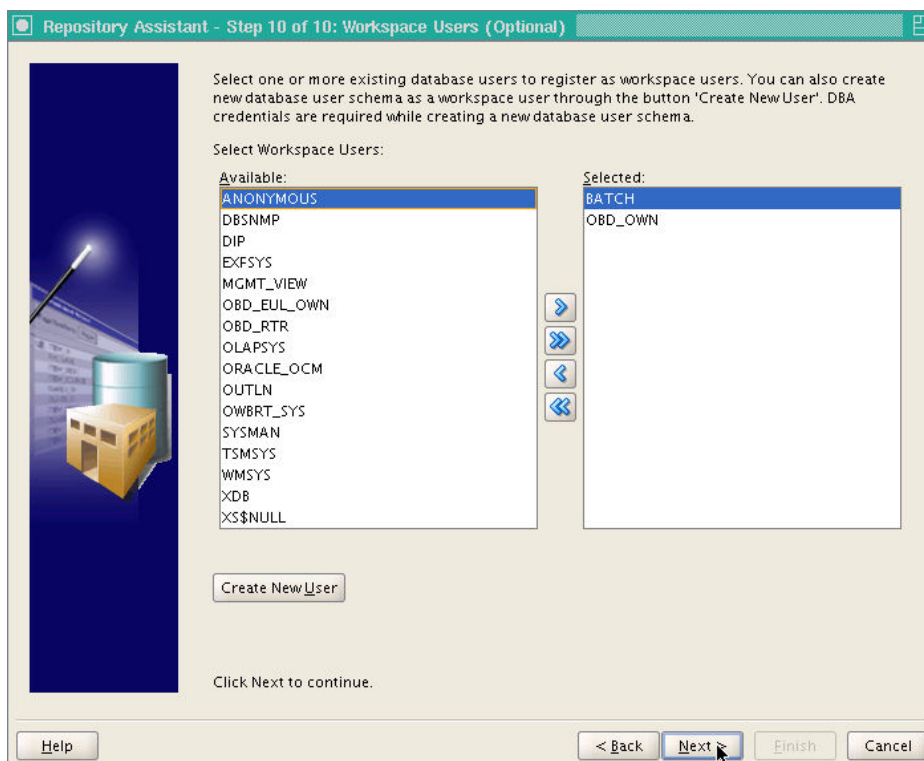
Help < Back Next > Finish Cancel

Deselect all optional features.

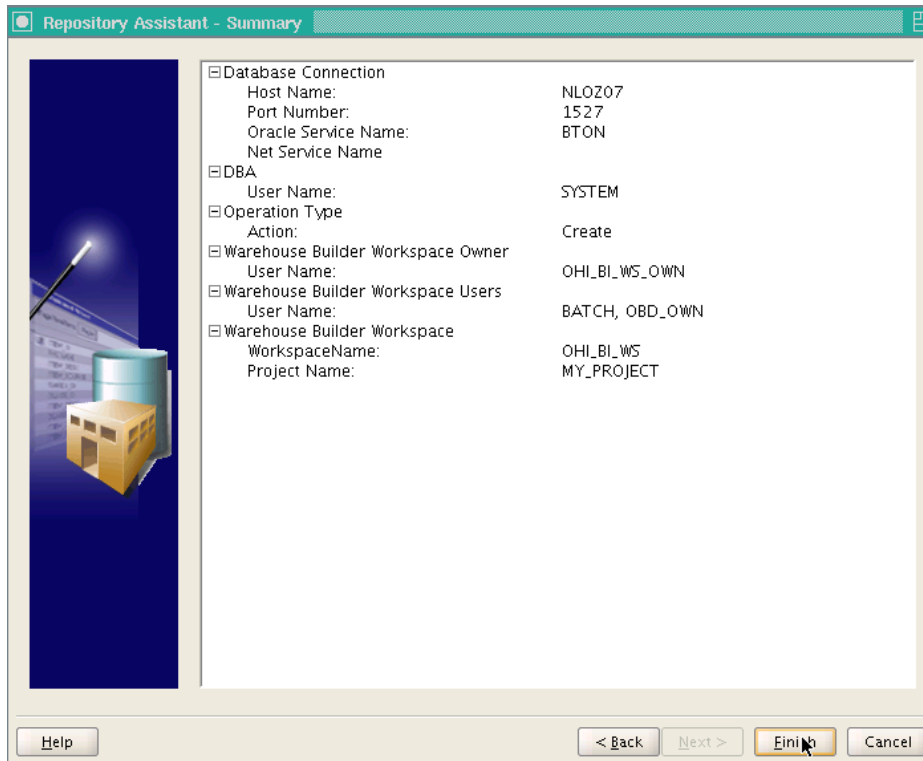


Base Language: AMERICAN ENGLISH

Click on Next>

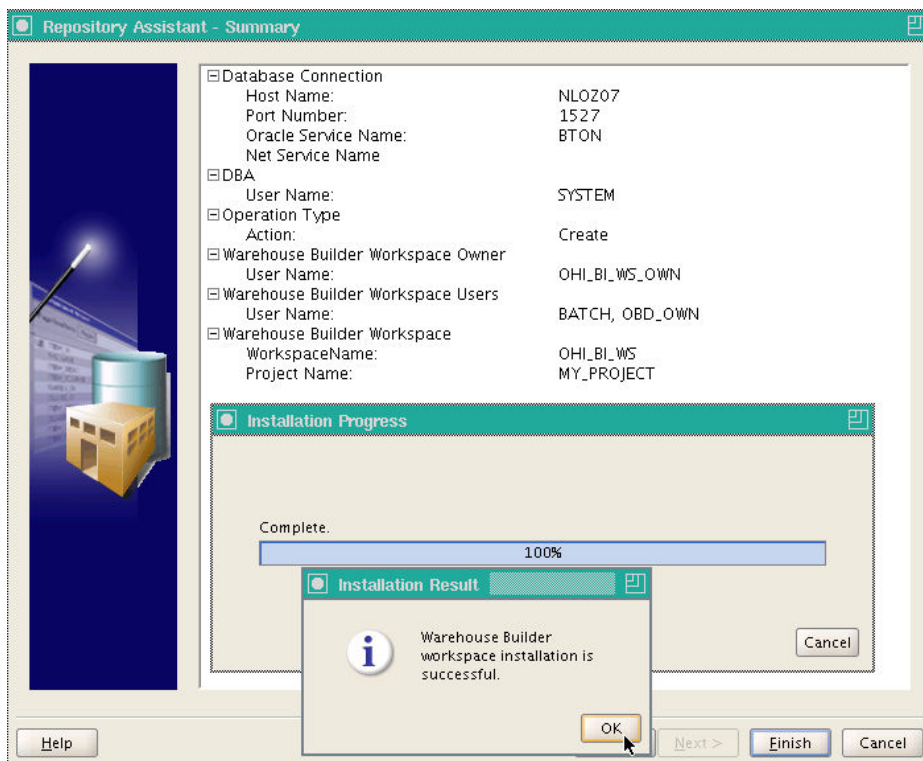


Add the users BATCH and OBD\_OWN as Workspace Users if these already exist. If not, these users will have to be added later using /reposinst.sh. Click on Next>



Check the displayed 'summary'. This should also show that no optional features will be installed. If everything is correct, click on Finish.

The repository with the OHI\_BI\_WS\_OWN workspace is now installed.



Click on OK.

10) **sqlplus / as sysdba**

- 11) Assign grant from SYS to OHI\_BI\_WS\_OWN.

**grant restricted session to ohi bi ws own;**

- 12) Assign grants from OWBSYS.

**connect OWBSYS/<ww>**

The following grants should be assigned to OHI\_BI\_WS\_OWN.

**grant select on wb rt service nodes to ohi bi ws own;**

If the OBD\_OWN user exists already, the following grants can be assigned. If the OBD\_OWN user does not exist yet, this must be done later.

**grant select on wb rt audit to obd own;**

**grant select on wb rt errors to obd own;**

**grant select on wb rt warehouse objects to obd own;**

**grant execute on wb workspace management to obd own;**

**exit;**

- 13) Extract the files DWH\_M2667\_02.tcl and DWH\_M2667\_02\_LOC.mdl from 2012.01.0.0000.zip (xml directory) and place these in the \$OZG\_BASE/xml directory.

- 14) Navigate to the \$ORACLE\_HOME/owb/bin/unix directory

- 15) ./OMBPlus.sh \$OZG\_BASE/xml/DWH\_M2667\_02.tcl

The installation of the OWB repository is now complete.

# GENERATION AND INSTALLATION OF ORACLE INSURANCE DATAMARTS FOR HEALTH OBJECTS.

## INSTALLATION

### Release

Installation of Oracle Insurance Datamarts for Health (patch) releases is described in the OHI Back Office Release Installation Manual and is performed on the application server.



#### ORACLE HEALTH INSURANCE Installation of releases

Because Oracle Insurance Datamarts for Health is dependent on OHI Back Office as source environment, the patch level of both must be the same (this can differ at interim patch level if the patches between are only Oracle Insurance Datamarts for Health patches or only OHI Back Office patches).

In addition, when installing patches the OHI Back Office environment must always be patched first, and then the Oracle Insurance Datamarts for Health environment, otherwise packages may be invalidated during installation.

### System parameters

One of the supplied files is the SYS\_PARAMETERS.dat file, which must be placed in the \$OZG\_BASE directory of the relevant Oracle Insurance Datamarts for Health environment on the database server. This file contains the control variables for the Oracle Insurance Datamarts for Health loading process. These parameters are customer-specific and the value of a number of these parameters **must** be adjusted in the file **before** Oracle Insurance Datamarts for Health can be loaded. A further number may also be adjusted if desired.

The parameters that **must** be adjusted to ensure correct operation of the loading process:

Parameter	Description
FINMOD	Indication (J/N [Yes/No]) of whether the financial module of OHI Back Office is used to load financial transactions. The default value is J [meaning yes], which means that Oracle Insurance Datamarts for Health assumes that the financial data can be retrieved from OHI Back Office.
EOZNLS	<p>The value that is given for this parameter depends on the NLS language setting. This determines, among other things, how a number is displayed. We distinguish between two different styles of notation. The following values indicate each style for the EOZNLS parameter.</p> <p>1) Decimals separated by a comma Thousands separated by a period</p> <p>e.g.: 1.000.000,001 This style is used in the DUTCH NLS Language, among others.</p> <p>Value for EOZNLS: nls_numeric_characters = ','</p> <p>This is the default value for the parameter.</p> <p>2) Thousands separated by a comma Decimals separated by a period</p> <p>e.g.: 1,000,000.001 This style is used in the AMERICAN NLS Language, among others.</p> <p>Value for EOZNLS: nls_numeric_characters = '.,'</p>

There are a number of parameters that are not mandatory for the correct operation of the load run, but are required for functional population, namely:

Parameter	Description
DCTYP1	First type of third-party code
DCTYP2	Second type of third-party code
DCTYP3	Third type of third-party code
DCTYP4	Fourth type of third-party code
DCTYP5	Fifth type of third-party code

This shows the third-party codes that should be loaded in the members dimension as alternative identifying codes. The values that have to be entered here are the codes of the 'code type' as shown in the 'Code' window in the relation management subsystem of OHI Back Office. The default value is empty.

A further 16 parameters can be included in SYS\_PARAMETERS.dat, to also enable population of a number of self-provided flex fields, namely:

Parameter	Description
CCTAE1	The description of the first alphanumeric field of the group contract.
CCTAE2	The description of the second alphanumeric field of the group contract.
CCTAE3	The description of the third alphanumeric field of the group contract.
CCTAE4	The description of the fourth alphanumeric field of the group contract.
CCTAE5	The description of the fifth alphanumeric field of the group contract.
CCTAE6	The description of the sixth alphanumeric field of the group contract.
CCTAE7	The description of the seventh alphanumeric field of the group contract.
CCTAE8	The description of the eighth alphanumeric field of the group contract.
CCTAE9	The description of the ninth alphanumeric field of the group contract.
CCTAE0	The description of the tenth alphanumeric field of the group contract.
CCTDE1	The description of the first date field of the group contract.
CCTDE2	The description of the second date field of the group contract.
CCTDE3	The description of the third date field of the group contract.
CCTNE1	The description of the first numeric field of the group contract.
CCTNE2	The description of the second numeric field of the group contract.
CCTNE3	The description of the third numeric field of the group contract.

This shows the flex fields that should be loaded in the collective contracts dimension. The values that have to be entered here are the descriptions of the flex fields as shown in the 'Flex field' window in the Back Office subsystem of OHI Back Office. The default value is empty.

The group contract flex fields have not yet been added to the Discover End User Layer or the OBIEE RPD. If these fields are desired they have to be added manually to the repository concerned.

A further 16 parameters can be included in SYS\_PARAMETERS.dat, to also enable population of a number of procedure claim group flex fields for the authorization element, namely:

Parameter	Description
VEWAE1	The description of the first alphanumeric field of the care authorization element.
VEWAE2	The description of the second alphanumeric field of the care authorization element.
VEWAE3	The description of the third alphanumeric field of the care authorization element.
VEWAE4	The description of the fourth alphanumeric field of the care authorization element.
VEWAE5	The description of the fifth alphanumeric field of the care authorization element.
VEWAE6	The description of the sixth alphanumeric field of the care authorization element.
VEWAE7	The description of the seventh alphanumeric field of the care authorization element.
VEWAE8	The description of the eighth alphanumeric field of the care authorization element.
VEWAE9	The description of the ninth alphanumeric field of the care authorization element.
VEWAE0	The description of the tenth alphanumeric field of the care authorization element.
VEWDE1	The description of the first date field of the care authorization element.
VEWDE2	The description of the second date field of the care authorization element.
VEWDE3	The description of the third date field of the care authorization element.
VEWNE1	The description of the first numeric field of the care authorization element.
VEWNE2	The description of the second numeric field of the care authorization element.
VEWNE3	The description of the third numeric field of the care authorization element.

This shows the procedure claim group flex fields that should be loaded in the care authorization fact. The values that have to be entered here are the descriptions of the procedure claim group flex fields as shown in the 'Procedure claim group flex field' window in the Back Office subsystem of OHI Back Office. Here,



choose either 'Message' or 'Authorization' as Usage Type. The default value is empty.

Message/authorization

The other parameters concern descriptions of unknown values, for example, that **can** be adjusted if desired.

In addition a number of date system parameters have been added to the table DWH\_SYS\_PARAMETERS (which are not in the file) that are used to determine from which date a number of fact tables should be loaded.

Parameter	Description
DCEVDM	Date from for load run of Claim fact.
PREVDM	Date from for load run of Premiums fact.
VZEVD	Date from for load run of Members fact.
ZVNVDM	Date from for load run of Care authorizations fact.
OHVVD	Date from for load run of Work in Progress Claim fact.

These dates have an initial value of '01-01-1980', which means that this is the date from for the listing of data when loading for the first time. If there is older data that also needs to be loaded, then the relevant date has to be adjusted once in the table.

Finally, there is the parameter INDDCA that specifies whether the aggregation of claims in table DWH\_DECLARATIES\_AGG should be performed. This parameter should be set manually to 'J' [meaning yes] or 'N' [meaning no].

## External files

Three external data files are defined within Oracle Insurance Datamarts for Health. This relates to the following files:

- **SYS\_PARAMETERS.dat:**  
File with control variables for the Oracle Insurance Datamarts for Health load run (see previous paragraph).

```
CODE (PK)   VARCHAR2(6)
OMSCHRIJVING VARCHAR2(100)
OMSCHRIJVING_EN VARCHAR2(100)
WAARDE_CHAR VARCHAR2(80)
WAARDE_NUM  NUMBER
WAARDE_DATE DATE "DDMMYYYY"
```

- **LEEFTIJD\_CATEGORIEEN.dat:**  
File with a number of age categories, e.g. youth or senior citizen.

```
LEEFTIJD (PK)  NUMBER
CAT_VIJF      VARCHAR2(30)
CAT_TIEN      VARCHAR2(30)
CAT_VIJFTIEN  VARCHAR2(30)
CAT_JEUGD     VARCHAR2(30)
CAT_PENSIOEN  VARCHAR2(30)
CAT_SPECIAAL  VARCHAR2(30)
CAT_LOGO      VARCHAR2(30)
```

- **POSTCODE\_VERRIJKINGEN.dat:**  
File with geographic data enhancements (e.g. disadvantaged neighborhood or DHV area code).

```
POSTCODE_NR (PK)  NUMBER
ACHTERSTANDSWIJK VARCHAR2(1)
ADVISEUR_BUITENDIENST VARCHAR2(50)
```

```
VESTIGINGSMANAGER VARCHAR2(50)
RAYONCODE VARCHAR2(50)
CONSUMENTEN_MARKTREGIO VARCHAR2(100)
DHV_REGIOCODE VARCHAR2(10)
DHV_REGIO_OMSCHRIJVING VARCHAR2(100)
WGR_REGIOCODE VARCHAR2(10)
WGR_REGIO_OMSCHRIJVING VARCHAR2(100)
OAD_CODE VARCHAR2(10)
ZIP_CODE VARCHAR2(10)
WZV_REGIOCODE VARCHAR2(10)
WZV_REGIO_OMSCHRIJVING VARCHAR2(100)
```

- **WBX\_OBIEE\_TRANSLATIONS.csv**  
File with translations for Oracle Business Intelligence

```
LANG_ID (PK) VARCHAR2(2),
METADATA_OBJECT VARCHAR2(4000)
MSG_NUM (PK) VARCHAR2(4000)
MSG_TXT VARCHAR2(4000)
```

- **GEN\_EIGENSCHAPPEN.dat**  
File with mapping definition of claim properties into OHI Business Intelligence. More information about the configuration of this file can be found in the application management chapter.

```
GEBRUIKGROEP CHAR(60),
EIGENSCHAP VARCHAR2(60)
TABEL_SPECIFIEK VARCHAR2(30)
KOLOM_SPECIFIEK VARCHAR2(30)
TABEL_GENERIEK VARCHAR2(30)
KOLOM_GENERIEK VARCHAR2(30)
```

Templates of these files can be retrieved from iProjects Files (NL Oracle Health Insurance Public - OHI Releases (all products) - Release 2011.01 - Templates - Business Intelligence).

The files SYS\_PARAMETERS.dat and LEEFTIJD\_CATEGORIEEN.dat must be filled for correct operation of the Oracle Insurance Datamarts for Health load run. The file POSTCODE\_VERRIJKINGEN.dat may be left empty.

The files should be placed in the \$OZG\_BASE directory of the relevant Oracle Insurance Datamarts for Health environment on the database server. This is a manual process.

The content of these files can be changed with the exception of the key fields **(PK)**.

When adjusting the files, spaces should be used and not tabs. To check that any changes have been made correctly and that the files have been placed in the correct location, select queries can be performed on the external tables that are populated by the files.

WBX\_OBIEE\_TRANSLATIONS.csv is used for Oracle Business Intelligence. The translation for all metadata is described here. The default language is set to English (LANG\_ID = 'en') which means that in WBX\_OBIEE\_TRANSLATIONS.csv there should always be a translation for the English language. To limit the languages to be used in Oracle Business Intelligence set the AllowedLanguages parameter in instanceconfig.xml (e.g. <AllowedLanguages>en,nl</AllowedLanguages> as per documentation *Oracle Fusion Middleware System Administrator's Guide for Oracle Business Intelligence Enterprise Edition, Localizing Oracle Business Intelligence*). When no language has been chosen yet, the language defaults to the browser language. To adjust the language as per login, modify the url (eg [http://Server\\_Name:port\\_number/analytics/saw.dll?Dashboard&Lang=nl](http://Server_Name:port_number/analytics/saw.dll?Dashboard&Lang=nl)). Once new translations are made available by modifying the WBX\_OBIEE\_TRANSLATIONS.csv file, the Oracle Business Intelligence server needs to be restarted.

File	Table
LEEFTIJD_CATEGORIEEN.dat	STG_LEEFTIJD_CATEGORIEEN_EXT
POSTCODE_VERRIJKINGEN.dat	STG_POSTCODE_VERRIJKINGEN_EXT
SYS_PARAMETERS.dat	STG_SYS_PARAMETERS_EXT
GEN_EIGENSCHAPPEN.dat	STG_GEN_EIGENSCHAPPEN_EXT

## SET-UP OF ORACLE BUSINESS INTELLIGENCE ENTERPRISE EDITION ENVIRONMENT

Oracle Business Intelligence Enterprise Edition (OBI EE) is the best reporting tool to use.

### SOFTWARE INSTALLATION

For installation of OBI EE, reference is made to the installation documentation of this product.

For reports, end users can make use of the presentation layer of OBI EE. Reports can be made with Oracle BI Answers and these can then be shared using the Oracle BI Interactive Dashboard component.

For the right versions of the software, see:



Certifications matrix 10.13.1.0

### ORACLE BUSINESS INTELLIGENCE CUSTOMIZATIONS

Customization of OBI is supported, to support your company style. This includes but is not limited to logo, background color and font color, basically all HTML customization may be made. For detailed instructions on Customizing Oracle Business Intelligence see the White Paper.

([HTTP://WWW.ORACLE.COM/TECHNETWORK/MIDDLEWARE/BI/CUSTOMIZING-ORACLE-BIEE-11G-176387.PDF](http://www.oracle.com/technetwork/middleware/bi/customizing-oracle-biee-11g-176387.pdf))

### CREATING A NON PRIVILEGED USER: OBI\_SELECT\_USER

Based on the principle of "the least privileged" a user should be created with minimal privileges. The process of creating such a user consists of creating a database user and granting privileges to that user. The privileges needed are obd\_rol\_select, which contains only select privileges on the warehouse tables. The create session privilege is required to be able to logon to the database. Access to the directory obd\_input is required for accessing the translations stored in an external table.

This is done in SQLPlus, instructions as per below.

Log on to the OHIBI database and create the OBI\_SELECT\_USER

```
SQLPlus> create user obi_select_user identified by <password>;
```

```
SQLPlus> grant obd_rol_select to obi_select_user;
```

```
SQLPlus> grant create session to obi_select_user;
```

```
SQLPlus> grant read on directory obd_input to obi_select_user;
```

### INSTALLATION OF ORACLE INSURANCE DATAMARTS FOR HEALTH REPOSITORY (RPD)

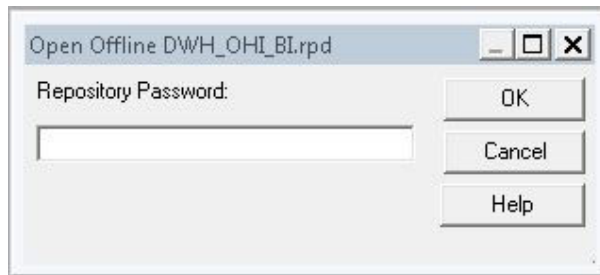
Oracle supplies an OBI EE repository as part of OHI Business Intelligence. This repository makes the OHI Business Intelligence database accessible. The repository can be installed on the Oracle BI Server.

This repository includes a subject area for each star schema as well as an over-arching subject area in which the entire data model has been made accessible.

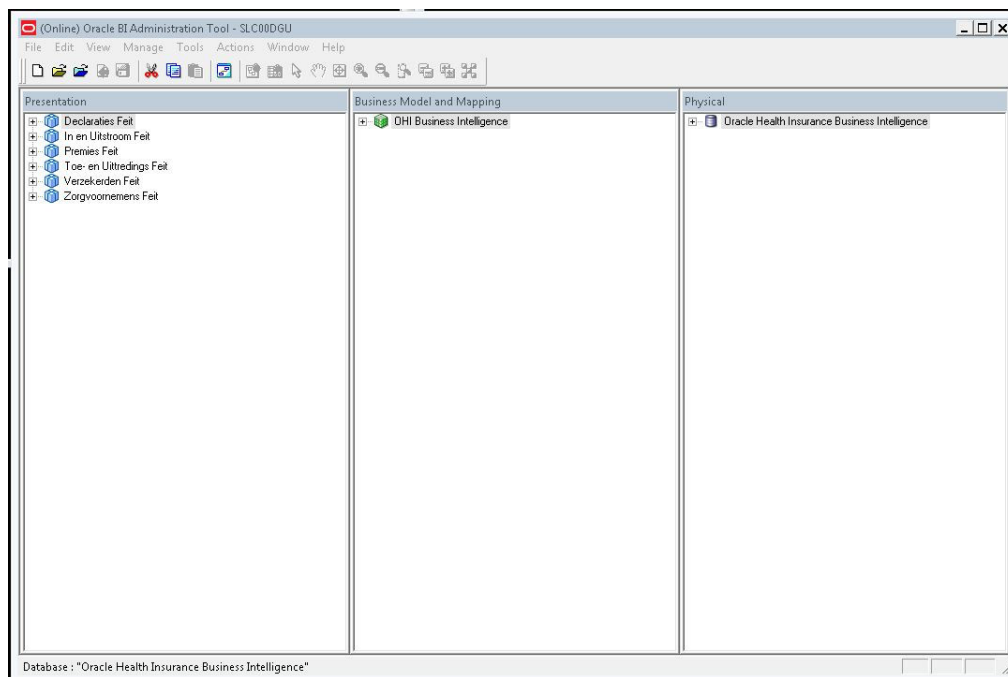
Before being able to use the DWH\_OHI\_BI.rpd file in your OBIEE environment, you will have to configure 3 connection pools using the Oracle BI Administration Tool.

Please follow the steps below to configure the 3 connection pools.

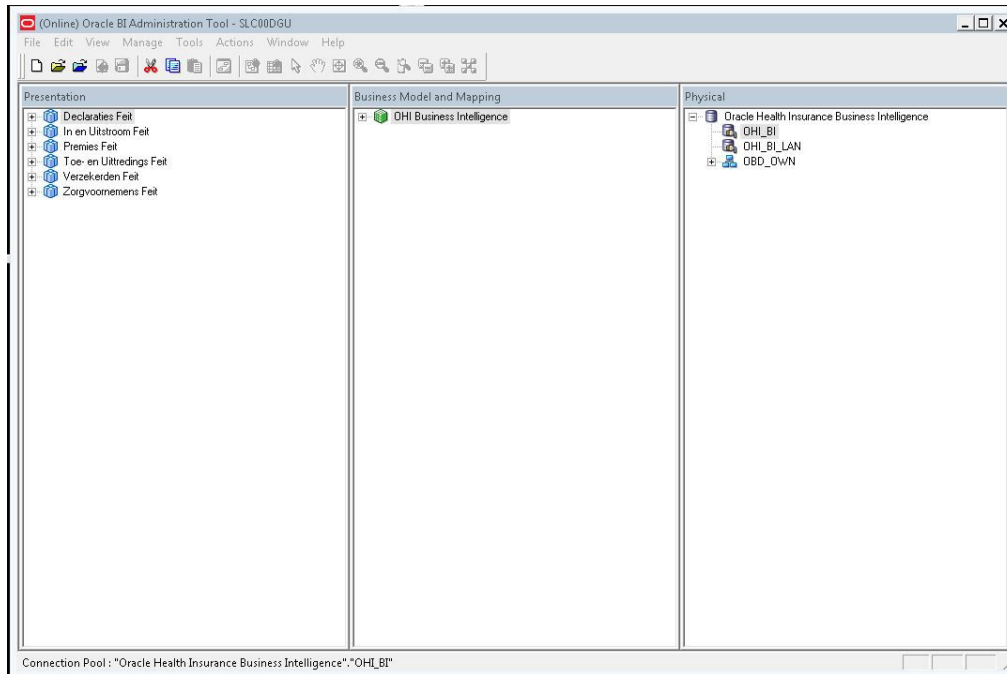
Open the DWH\_OHI\_BI.rpd offline using the Oracle BI Administration Tool:



Enter adm1n1strator as the initial password.



Open the Oracle Health Insurance Business Intelligence node in the Physical layer.



Open the OHI\_BI connection pool by double clicking OHI\_BI.

Connection Pool - OHI\_BI

General | Connection Scripts | XML | Write Back | Miscellaneous

Name:  Permissions...

Call interface:

Maximum connections:

☐ Require fully qualified table names

Data source name:

☒ Shared logon

User name:  Password:

☒ Enable connection pooling

Timeout:  (minutes)

☒ Use multithreaded connections

☒ Parameters supported

Isolation level:

Description:

OK Cancel Help

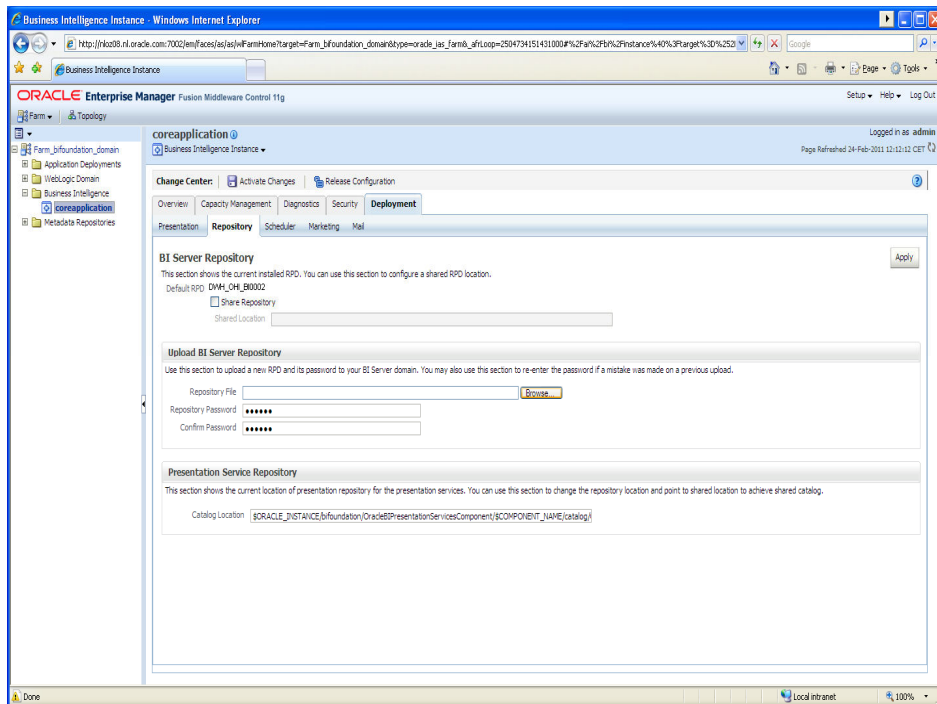
Change the data source name to your OHI Business Intelligence database.

The Connection pool OHI\_BI\_LAN is the connection pool used by translations of the repository to enable usage of OBI in your native language. This is not the same connection pool as OHI\_BI due to the fact that the translation table may be stored on a different server as opposed to where the datamarts reside. To configure the connection pool for OHI\_BI\_LAN, execute the above steps for the OHI\_BI\_LAN connection pool.

The connection pool for Usage Tracking is by default the repository used by OBI and should be a different Oracle schema as the datamarts. With security in mind this would also typically be a different database as the database where the datamarts reside. To configure the connection pool for Usage Tracking please execute the above steps for the OHI\_BI\_USAGE\_TRACKING connection pool, and use the credentials of the OBI repository.

Save the DWH\_OHI\_BI.rpd.

After this you can import the DWH\_OHI\_BI.rpd in your OBI EE server environment using the Oracle Enterprise Manager (Fusion Middleware Control 11g) shown below.



In this window, under the heading "Upload BI Server Repository" choose the new DWH\_OHI\_BI.rpd file and enter the password. Enter the new password again for verification. The new repository will be imported and receives a new sequence number.

Note: this will cause any changes made to the repository to be removed.



## CONFIGURE USAGE TRACKING

To configure usage tracking see the documentation in “*Oracle® Fusion Middleware System Administrator's Guide for Oracle Business Intelligence Enterprise Edition*”, chapter 9 “*Managing Usage Tracking*”.

As a reference below values are an example of Direct Insertion in  
\$ORACLE\_INSTANCE//config/OracleBIServerComponent/coreapplication\_obis1/NQSConfig.INI

```
DIRECT_INSERT = YES;
PHYSICAL_TABLE_NAME = "Oracle Health Insurance Business
Intelligence"."OBI_BIPLATFORM"."S_NQ_ACCT";
CONNECTION_POOL = "Oracle Health Insurance Business
Intelligence"."OHI_BI_USAGE_TRACKING";
SUMMARY_STATISTICS_LOGGING = YES;
SUMMARY_ADVISOR_TABLE_NAME = "Oracle Health Insurance Business
Intelligence"."OBI_BIPLATFORM"."S_NQ_SUMMARY_ADVISOR";
```

## UPGRADING ORACLE BUSINESS INTELLIGENCE REPOSITORY

To upgrade the OBIEE repository, the procedure used, is referred to as a “Full Merge With a Common Parent with Binary Repositories”. The documentation may be found in “[Oracle Fusion Middleware Metadata Repository Builder’s Guide for Oracle Business Intelligence Enterprise Edition](#)”.

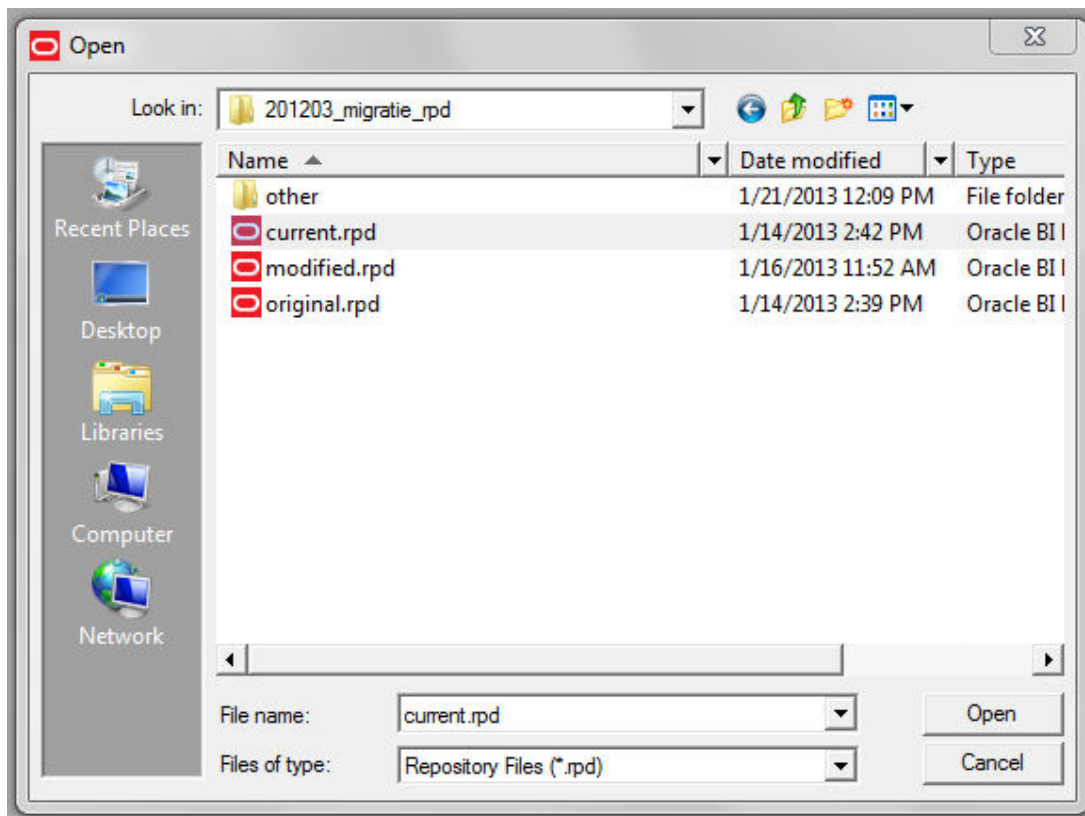
Definitions used in this topology:

- **Original RPD:** The rpd of the release which is migrated from.  
(This is the version provided in the previous release of OHI Business Intelligence and is unmodified by the Health Insurer, for instance of version 2012.03.01, in the example original.rpd)
- **Modified RPD:** The rpd of the release which is migrated to.  
(This is the version provided in the new release of OHI Business Intelligence and is unmodified by the Health Insurer, for instance of version 10.13.1.0.0, in the example modified.rpd)
- **Current RPD:** The rpd of the release of the customer where is migrated to  
(This is the client version modified i.e. the version of the Health Insurer of the current release for instance 2012.03.01, in the example current.rpd ).

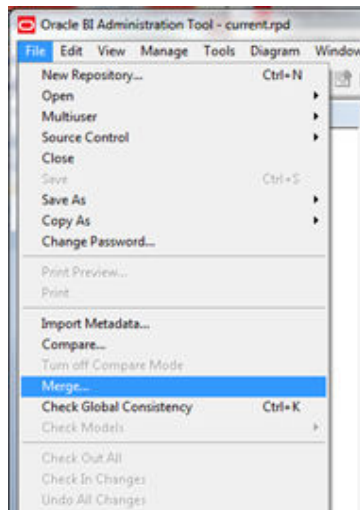
In short the above mentioned procedure needs to be followed.

First Download and Install the Oracle Business Intelligence Developer Client Tools Installer. To download the correct version please consult the certification matrix  
(From OHI BI release 10.13.1.0.0 and further the required version for the Client tool is 11.1.1.6.5).

1. Open the current.rpd.



2. File Merge



3. Tick equalize during merge
4. Open original and merge rpd's
5. Type the passwords for original and modified repositories.
6. Save merged repository as: DWH\_OHI\_BI.rpd

Merge Type: ☒ Full Repository Merge ☐ Patch Repository Merge

Original Master Repository: C:\Users\DUVANL\Desktop\201203\_migratie\_rpd\original.rpd Select

Repository Password: .....

Modified Repository: C:\Users\DUVANL\Desktop\201203\_migratie\_rpd\modified.rpd Select

Repository Password: .....

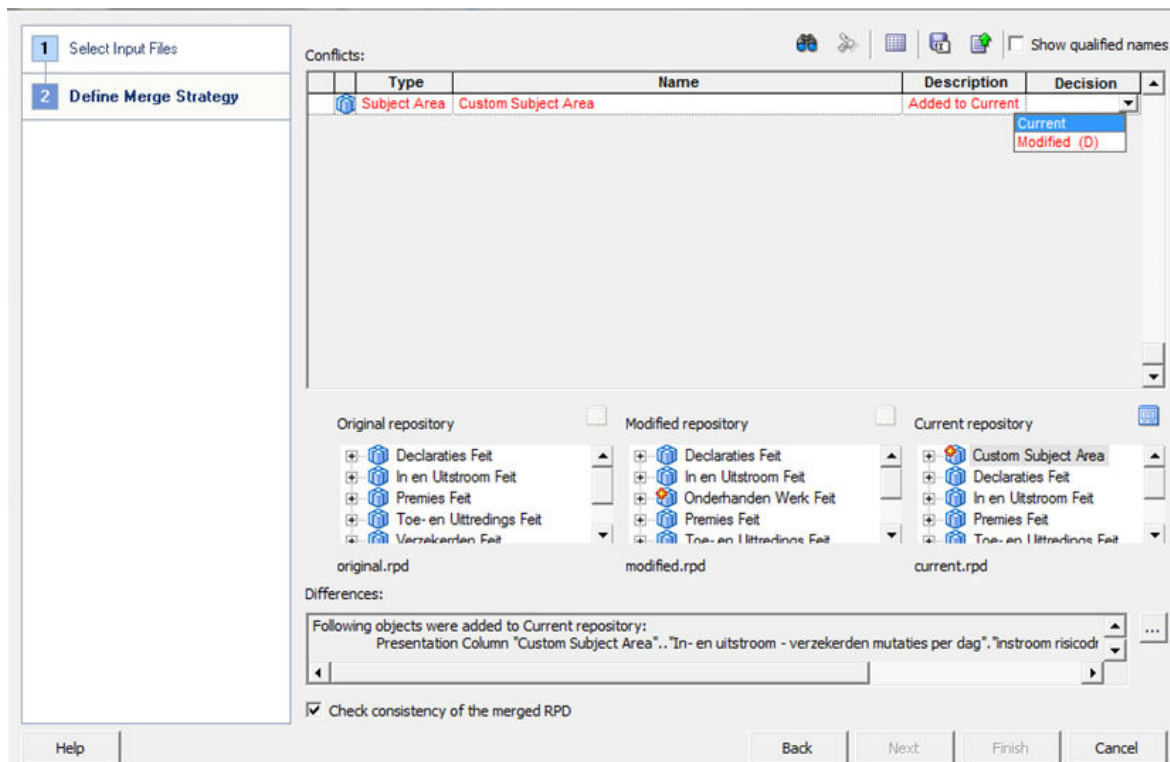
Current Repository: C:\Users\DUVANL\Desktop\201203\_migratie\_rpd\current.rpd Select...

Save Merged Repository as: C:\Users\DUVANL\Desktop\201203\_migratie\_rpd\DWH\_OHI\_BI.rpd Select

Repository Password: .....

☒ Equalize during merge

7. Define Merge strategy:  
Tick Check Consistency of the merged RPD.

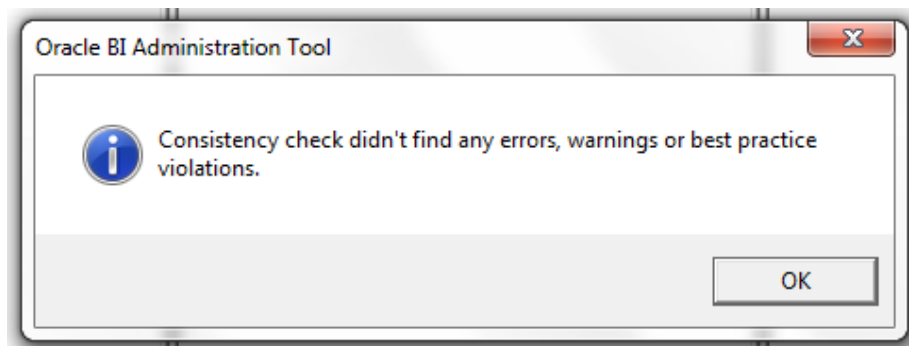
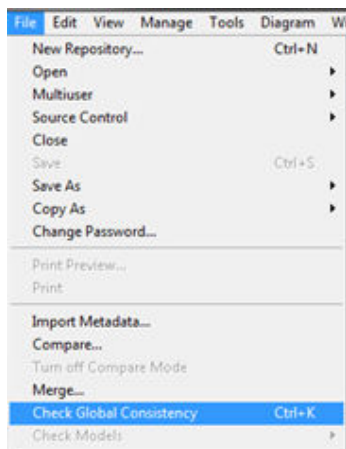


-- choose current to keep the changes in Current repository (Health Insurer RPD)

-- choose modified to keep the change In Modified repository (Oracle RPD) the (D) stands for delete, because this when choosing this it will actually remove the Custom Subject Area.

In the example current is chosen, to keep the Custom Subject Area in the newly to be generated PRD.

8. Review the results of the Consistency Check, and make sure there are no consistency errors.



9. Check the connection details of the connection pools; while merging the two repositories the connection details will be overwritten.
10. Upload the newly created rpd DWH\_OH1\_BI.rpd to the OBIEE repository see "Upload BI Server Repository".

## PART II LOADING

### INTRODUCTION

The full load run of Oracle Insurance Datamarts for Health consists of three steps.

1. Population of the Oracle Insurance Datamarts for Health Staging Area (STG) tables from the sources (OHI Back Office and external files) by script ZRGOE01S.
2. Transformation of the data in the Oracle Insurance Datamarts for Health Staging Area (STG) tables via script ZRGOS01S.
3. Population of the Oracle Insurance Datamarts for Health Data Warehouse Area (DWH) tables from the Staging Area using script ZRGOD01S.

The scripts above may **not** be run at the same time because the Data Warehouse section is dependent on the data in the Staging Area. There may well be dependencies specified in the OHI Back Office application so that all scripts can be requested but the next script can only be started once the previous script has terminated (successfully).

In this chapter the load run is described in detail.

### EXTRACT OHI BACK OFFICE (ZRGOE01S)

The first step is loading of the source data in the Staging Area (STG). The Staging Area is a data area to temporarily store and potentially process data from the OHI Back Office source system that is to be processed.

This data area therefore serves as a temporary buffer for storage of data and is not intended for queries by the end user. There are **no** relations made between the various tables that normally aim to be able to immediately perform a number of trivial integrity checks. These checks already take place in the source system and are therefore not necessary in Oracle Insurance Datamarts for Health.

Starting up this load run happens by calling the script **ZRGOE01S** via the batch scheduler in the OHI Back Office application. The script runs a number of PL/SQL packages (generated by OWB) to populate a number of tables.

This script can be started simply from the OHI Back Office menu by selecting the menu option Oracle Insurance Datamarts for Health → Extract OHI Back Office.

**Submit Batch Request**

Script: ZRG0E01S Extract OHI Back Office Submit Request

**Batch Request**

Number: 1020567 Start Time:  ...

Printer:  Interval:

Processes:  Optimizer Mode: ALL\_ROWS

No. of Hours:  Period terminable: ☐ Trace terminable?: ☐

Trace?: ☐ Debug?: ☐

**Parameters**

<input checked="" type="checkbox"/>	OHI BI database	<input type="text"/>	<input type="text"/>	<input type="text"/>
<input type="checkbox"/>	Claims to date	<input type="text"/>	<input type="text"/>	<input type="text"/>
<input type="checkbox"/>	Premiums to date	<input type="text"/>	<input type="text"/>	<input type="text"/>
<input type="checkbox"/>	Policies to date	<input type="text"/>	<input type="text"/>	<input type="text"/>
<input type="checkbox"/>	Care author. to date	<input type="text"/>	<input type="text"/>	<input type="text"/>

**Dependencies**

	Depending on	Start Time
<input checked="" type="checkbox"/>	Func <input type="text"/>	<input type="text"/>
<input type="checkbox"/>	<input type="text"/>	<input type="text"/>
<input type="checkbox"/>	<input type="text"/>	<input type="text"/>

The parameters should be filled as follows.

- Fill in 'OHI BI database' with the alias of the Oracle Insurance Datamarts for Health database (e.g. OACC).

**Note:** The script request is executed under the batch user, it is important that the database name is specified as defined in the secure external password store (wallet). This means the db\_connect\_string that is specified for the batch user on the Oracle Insurance Datamarts for Health environment (e.g. oacc\_batch). This db\_connect\_string should be specified as 'OHI BI database' parameter when submitting the ZRG0E01S.

- Fill in 'Claim to date' with the date up to which the claims should be loaded on the basis of the approval date.  
If this field is left empty then the system date -1 day is used (default).
- Fill in 'Premium to date' with the date up to which the premiums should be loaded on the basis of the date and time of the status change.  
If this field is left empty then the system date -1 day is used (default).
- Fill in 'Policies to date' with the date up to which the Policies should be loaded on the basis of the modification date of the policy modification.  
If this field is left empty then the system date -1 day is used (default).
- Fill in 'Care auth. to date' with the date up to which the Care authorizations should be loaded on the basis of the approval date or date terminated of the care authorization.  
If this field is left empty then the system date -1 day is used (default).
- Fill in 'WIP to date' with the date up to which the Work in Progress Claims should be loaded on the basis of the registration date of the Work in Progress Claim.  
If this field is left empty then the system date -1 day is used (default).
- Fill in 'Data from time dim.' with the date from when the time dimension should be filled. The default value is '01-01-1980'.
- Fill in 'Nr of years of time dim.' with the number of years that should be filled in the time dimension. The default value is 40.

- For 'Claims?', 'Premiums?', 'In- and Out-flux?', 'Policies?', 'Care authorizations?' and 'Work in Progress Claims?' enter whether the relevant star schema should be loaded (J) or not (N=default).
- For 'Hospitalization?' enter whether the field `ind_eerste_opname` in `dwh_declaraties` should be updated after a load run. The default value is 'N'.
- For 'Perform checks?', enter whether data checks should be carried out when loading the data warehouse.
- For 'Check source?', enter whether the OHI Back Office source tables should be checked for integrity before extraction.
- For 'Suppress errors?', specify whether potential overridable errors from the previous load run (e.g. compatibility checks) can be generated.

Once the parameters have been filled in the script can be submitted to the Batch Scheduler with 'Submit request'.

A number of checks are first carried out before the extraction of data from OHI Back Office is started:

1. Did the last DWH load run (ZRGOD01S) terminate successfully? If this is not the case the extraction is not performed unless the value 'J' [meaning yes] has been entered for the parameter 'Override faults?'.
2. In the event that the claim star schema is loaded, it is checked whether all financial transactions have been duplicated in the OHI Back Office source environment. If this is not the case, the loading of claims is stopped.
3. In the event that the policies star schema is loaded, it is checked whether all policy events in the OHI Back Office source environment have been processed into modifications. If this is not the case, the load run is still started but it may occur that in the compatibility checks the number of members in Oracle Insurance Datamarts for Health deviates from the number in OHI Back Office.
4. If the star schemas are loaded for which a date to can be specified then a check is performed on the specified date to value:
  - If the specified value is empty, the value of the date to parameter is set to the highest date -1 of the data being loaded. The date -1 is necessary because the data of the highest date may be an incomplete day.

For example: if claims are loaded on May 27 and the highest approval date of the claims in OHI Back Office is May 25 then the date to is filled with May 24.

- If a value has been given for the date to parameter, the above check is also performed; in that case the final value is determined by the given or the found value, whichever is lower. However, a day is not subtracted unless the specified date is the same as the system date.

For example: if claims are loaded on May 27, the date specified is May 26 and the highest approval date of the claims in OHI Back Office is May 25, then the date to is set to May 25.

For example: if claims are loaded on May 27, the date specified is May 27 and the highest approval date of the claims in OHI Back Office is May 27, then the date to is set to May 26.

- If the value is before the date to of the previous load run, then the load run is not performed for the fact concerned. This is reported in the extraction process log.
1. The current release of Oracle Insurance Datamarts for Health is checked to see if it matches the current release of OHI Back Office. This check takes place at the patchset level; 2011.03.5, for example. If the releases do not match at the patchset level, it may not be loaded.
  2. If the 'Check source?' value is set to 'J' [meaning yes], it is checked that statistics are present for all tables in OHI Back Offices that serve as a source for the load run and that all integrity rules have been activated and successfully validated. This concerns both the declarative constraints (PK, UK, FK and CHECK constraints, via `USER_CONSTRAINTS`) and procedural constraints (CDM Ruleframe via `ALG#BUSINESS_RULES`).

If there are tables for which no integrity rules have been activated and successfully validated, then



these are excluded. It is recommended to first correct the data in the source system and validate the integrity rules. It is possible to opt to continue loading; this is done by specifying a parameter.

It is checked whether the source tables in OHI Back Office actually have statistics. If no statistics are present, this may lead to inefficient execution scheduling during the extraction due to the fact that in that case 'dynamic sampling' is used. To avoid this, an error report is issued if there are tables without statistics.

## TRANSFORM DATA (ZRGOS01S)

The second step is the execution of a number of transformations in the Staging Area (STG). The Staging Area is a data area for temporarily transforming data that may be loaded in the extraction phase to the correct format and potentially processing it.

Starting this step happens by calling the script **ZRGOS01S** via the batch scheduler in the OHI Back Office application. The script runs a number of PL/SQL packages (generated by OWB) to enhance a number of tables with 'calculated' data and transfer the data structure to star schema.

This script can be started simply from the OHI Back Office menu by selecting the menu option Oracle Insurance Datamarts for Health → Transform data.

**Submit Batch Request**

Script: **ZRGOS01S** Transform data Submit Request

*Batch Request*

Number: 1020573 Start Time:  ...

Printer:  Interval:

Processes:  Optimizer Mode: **ALL\_ROWS**

No. of Hours:  Period terminable: ☐ Trace terminable?: ☐

Trace?: ☐ Debug?: ☐

*Parameters*

	Parameter Name	Value
<input checked="" type="checkbox"/>	OHI BI database	<input type="text"/>
<input type="checkbox"/>		<input type="text"/>
<input type="checkbox"/>		<input type="text"/>
<input type="checkbox"/>		<input type="text"/>
<input type="checkbox"/>		<input type="text"/>

*Dependencies*

	Depending on	Start Time
<input checked="" type="checkbox"/>	Func <input type="text"/>	<input type="text"/>
<input type="checkbox"/>	<input type="text"/>	<input type="text"/>
<input type="checkbox"/>	<input type="text"/>	<input type="text"/>

The name of the OHI BI database in which the transformations should be performed has to be specified as a parameter. Make sure that the OHI BI database name given here is the same as that specified for the batch user in the 'wallet'.

After the transformation step has run, a compatibility check between OHI Back Office and Oracle Insurance Datamarts for Health will be performed. The results of this compatibility check are shown in the log of the ZRGOS01S script. More information on available checks can be found in the chapter **checks**.

## LOAD OHI BUSINESS INTELLIGENCE (ZRGOD01S)

The final step in the process is loading the data from the staging area into the Data Warehouse Tables. The Data Warehouse tables are intended for query and analysis purposes by the end user. The data model is set up as a dimensional model (star schema) and can contain both atomic data and aggregates. This model fits the way in which users approach the data (dimensions and facts).

Starting up the load run happens by calling the script **ZRGOD01S** in the OHI Back Office application. The script runs, among other things, a number of PL/SQL packages (generated by OWB) to populate the tables.

This script can be started simply from the OHI Back Office menu by selecting the menu option Oracle Insurance Datamarts for Health → Load Oracle Insurance Datamarts for Health.

As well as the name of the OHI BI database it should be specified as a parameter whether potential non-fatal errors arising during the transformation process (namely compatibility checks) may be overridden.

## UNDO LOADRUNS (ZRGO004S)

If, after refreshing Oracle Insurance Datamarts for Health, it is discovered that errors have arisen and it is not possible to restore from a backup, the script 'Undo load runs' can be used for a specific star schema to remove one or more load runs from Oracle Insurance Datamarts for Health at the same time. The registration of the date to on which the relevant star schema was refreshed is also restored. After running ZRGO004S the data can be reloaded using the regular load run (ZRGOE01S, ZRGOS01S and ZRGOD01S).

In the event of a software error or conversion, data usually only needs to be removed for one star schema. If, for example, first claims are loaded, then policies, and then claims again and the claims star schema appears to contain errors in the data, it is not desirable that the policies also have to be removed. However it is also possible to remove data for multiple star schemas at once.

With the script ZRGO004S load runs can be removed for the following star schemas:

1. Claims

2. Policies
3. Premiums
4. Care authorizations
5. Work in Progress Claims

**Submit Batch Request**

Script:

**Batch Request**

Number:  Start Time:

Printer:

Processes:  Interval:

No. of Hours:  Optimizer Mode:

Period terminable: ☐ Trace terminable?: ☐

Trace?: ☐ Debug?: ☐

**Parameters**

	OHI BI database	Claims?	Premiums?	Policies?	Care authorizations?
	<input type="text" value="N"/>	<input type="text" value="N"/>	<input type="text" value="N"/>	<input type="text" value="N"/>	<input type="text" value="N"/>

**Dependencies**

Depending on	Start Time	
<input type="text" value="Func"/>	<input type="text"/>	<input type="text"/>
<input type="text"/>	<input type="text"/>	<input type="text"/>
<input type="text"/>	<input type="text"/>	<input type="text"/>

If the script 'Undo loadruns' is executed while the current loadrun has not yet terminated, the current loadrun is cancelled first.



**Note:** If the script 'Undo load runs' is executed while the current load run has not yet terminated, the load run of ALL star schemas loaded during the current load run is canceled. Regardless of whether the star schemas were loaded correctly and regardless of the supplied script parameters.

### Script parameters

Parameter	Values	Hint	Mandatory?
OHI BI Database		Name of the Oracle Insurance Datamarts for Health database	Y
Claims?	'J', 'N'	Undo claims star schema load run(s)?	Y
Premiums?	'J', 'N'	Undo premiums star schema load run(s)?	Y
Policies?	'J', 'N'	Undo policies star schema load run(s)?	Y
Care authorizations?	'J', 'N'	Undo care authorizations star schema load run(s)?	Y
WIP Claims?	'J', 'N'	Undo Work in Progress star schema load run(s)?	Y
Date	Default empty	Load runs on and after this date are removed. Empty = only remove the most recent load run.	Y

## CORRECT MONITORCODE (ZRGO005S)

If the mapping of procedures on monitorcode in the source system OHI Back Office has been changed it might be necessary to correct the references to the Monitorcode dimension in the claims datamart in OHI Business Intelligence. Script ZRGO005S can be used for this purpose.

This script first updates the monitorcode dimensions and then corrects the incorrect references in the claims datamart for all claims with a DATUM\_ACCOORD (finalized date) equal to or greater than the date parameter specified. If parameter Monitorcode is specified as well only claims that reference to that particular monitorcode will be corrected (if necessary).

Submit Batch Request

Script: ZRGO005S Correcting monitorcode Submit Request

**Batch Request**

Number: 1068929 Start Time:

Printer:  Interval:

Processes:  Optimizer Mode: ALL\_ROWS

No. of Hours:  Period terminable: ☐ Trace terminable?: ☐

Trace?: ☐ Debug?: ☐

**Parameters**

	Parameter	Value	Start Time
<input checked="" type="checkbox"/>	OHI BI database	oacc	
<input checked="" type="checkbox"/>	Date from	01-01-2013	
<input type="checkbox"/>	Monitorcode		
<input type="checkbox"/>			
<input type="checkbox"/>			

**Dependencies**

	Depending on	Start Time
<input checked="" type="checkbox"/>	Func	
<input type="checkbox"/>		
<input type="checkbox"/>		

### Script parameters

Parameter	Values	Hint	Mandatory?
OHI BI Database		Name of the Oracle Insurance Datamarts for Health database	Y
Date from	Default empty	The monitorcode of all claims with DATUM_ACCOORD equal to or greater than this parameter will be corrected if necessary.	Y
Monitorcode	Default empty	If this parameter is filled only claims with this monitorcode will be corrected	N

## CHECKS

At the end of each step any errors that may have arisen are printed in the log of the script request concerned.

If the script request parameter 'Perform check?' is set to 'J' [meaning yes] for the extraction process, then data checks are performed during the warehouse load run and after completion. These check whether particular data in Oracle Insurance Datamarts for Healths matches OHI Back Office. These checks are available for the claims (including aggregated claims), premiums, care authorization and policies star schemas. The totals and number of differences in OHI Back Office and Oracle Insurance Datamarts for Health are printed in the log.

It is also possible to perform the star schema checks separately from the load run using script ZRGO003S ("Perform compatibility checks"). Here, the name of the Oracle Insurance Datamarts for Health database needs to be specified as well as for which star schema(s) the check should be run. A period can also be specified for which it must be checked. If this period is not specified then the period read in during the last load run is checked.

The following checks are available:

Star schema	Check	Description
Claims	DCACTL1	Check aggregated claims
Claims	DCECTL1	Check booked amount per date imported, general ledger account and claim number
Claims	DCECTL2	Check booked amount per general ledger unit/account/category/product, date imported and accounting period
Claims	DCECTL3	Check cost price per approval date and claim number
Claims	DCECTL4	Check coverage amount per risk-bearing insurance company
Claims	DCECTL5	Check deductible amounts per claim line
Premiums	PRECTL1	Check gross premium amount per renewal date and member
Premiums	PRECTL2	Check net premium amount per renewal date and member
Premiums	PRECTL3	Check net premium amount per risk-bearing insurance company
Policies	VZECTL1	Check number of members per branded product combination and member
Care authorizations	ZVNCTL1	Check number per procedures per authorization period
Care authorizations	ZVNCTL2	Check amount per procedure per authorization period
WIP Claims	OHWCTL1	Check amount per Work in Progress claims line
WIP Claims	OHWCTL2	Check number per Work in Progress claims line

Individual checks can be turned on and off using procedures `WBX_LAADPROCES_CONTROLES.ZET_CONTROLE_AAN` and `ZET_CONTROLE_UT` respectively. If all checks need to be turned on/off, this can be done using the procedures `ZET_ALLE_CONTROLES_AAN` and `ZET_ALLE_CONTROLES_UT` respectively. These procedures must be performed under the `OBD_OWN` schema on the Oracle Insurance Datamarts for Health database.

## AUDIT INFORMATION

In Oracle Insurance Datamarts for Health, during the load run audit information is established for the newly read-in records. This means that each loaded record receives a `LAADRUN_ID` that refers to a specific record in the audit table (`STG_SYS_AUDIT`). In this audit record, information is recorded about the time of loading and extraction, the code of the source system and the load dates of the various facts of the load run.

This audit data is also transferred to the Data Warehouse in table `DWH_SYS_AUDIT`.

## LOG INFORMATION

Oracle Insurance Datamarts for Health has an internal audit mechanism that keeps log information up to date with mappings generated by OWB (among others: number of records selected, number inserted, updated, number of errors arising and why).

This information can be requested using a few views. These are the views `WBX_LAADRUNS_VW`, `WBX_MAPPING_VW` and `WBX_LAADRUN_ERRORS_VW`. These views are included in the schema of `OBD_OWN`. The view `WBX_LAADRUNS_VW` gives an overview of all load runs that have been performed. For each load run it will be shown which star schemas were loaded, what the run times were, which period was loaded and whether a compatibility check was performed. The view `WBX_LAADRUN_ERRORS_VW` gives an overview for each script request ID of all mappings that produced an error report during a load run. The view shows which mapping has produced an error

message for each script request, at what moment this occurred and what the error message was. The view WBX\_LAADDRUNS\_VW gives an overview of all data warehouse mappings that have been run.

As well as this, an additional logging mechanism is implemented, because not all packages run during the load run are generated by OWB and the standard log is therefore not complete.

The tables WBX\_LOG\_EVENTS and WBX\_LOG\_MESSAGES have been added so that log information can also be stored for non-OWB packages.

Furthermore, the output of the Unix load scripts is written to disk in log and out files in \$OZG\_BASE/log or out/<user>. In these it is possible to find out whether everything ran successfully.

## RESOLVING ERRORS

If errors have arisen then in most cases the run can be restarted. Loading of the Staging Area can be done as many times as desired, as the Staging tables are made empty for the read in.

[see also Part III Application management]

## CHECKING STATUS REQUEST LOAD SCRIPTS

When the scripts are run the status of the load run can be followed to see if the load run has started, is still running, has finished, or failed.

Log in to the OHI Back Office application. Navigate to 'System' → 'Batch request' to 'Maintain'. For the script name, type the name of the script that is requested and click on 'Perform search request'. The window looks like this:

The screenshot shows the 'Maintain Batch Request' window with the 'Batch Requests' tab selected. It contains a table of batch requests with the following columns: Number, Batch, Status, Outst. Msgs?, Time Started, Time Aborted, Runtime, No. of Subpr., To Process, and Pe. The table lists 15 batch requests, mostly with a status of 'Finished'.

Number	Batch	Status	Outst. Msgs?	Time Started	Time Aborted	Runtime	No. of Subpr.	To Process	Pe
1020569	SYS1124S	Finished	✓	01-03-2012 16:04:49	01-03-2012 16:04:57	8s	0		
1020568	SYS1124S	Failed	✗	01-03-2012 15:52:40			0		
1020547	FIN2105S	Finished	✓	01-03-2012 11:49:46	01-03-2012 11:50:10	24s	2	167	
1020546	FIN2105S	Finished	✓	01-03-2012 11:49:38	01-03-2012 11:50:09	31s	2	229	
1020502	ZRG3012S	Finished	✓	29-02-2012 11:08:20	29-02-2012 11:08:39	19s	1	3	
1020484	SYS1107S	Finished	✓	29-02-2012 09:59:48	29-02-2012 09:59:53	5s	0		
1020483	SYS1107S	Finished	✓	29-02-2012 09:56:27	29-02-2012 09:56:32	5s	0		
1020482	SYS1107S	Finished	✓	29-02-2012 09:50:30	29-02-2012 09:50:38	8s	0		
1020462	ZRG3012S	Finished	✓	29-02-2012 09:31:50	29-02-2012 09:32:07	17s	3	3	
1020451	ZRG4203S	Finished	✓	28-02-2012 17:29:35	28-02-2012 17:29:38	3s	2	1	
1020450	ZRG4203S	Finished	✓	28-02-2012 17:28:56	28-02-2012 17:28:57	1s	0		
1020447	ZRG4203S	Finished	✓	28-02-2012 17:26:45	28-02-2012 17:26:49	4s	2	1	
1020444	ZRG4203S	Finished	✓	28-02-2012 17:18:11	28-02-2012 17:18:53	42s	2	4	

At the bottom of the window, there is a 'Description' field with the text 'Automatic Processing' and a 'Details' field.

## VERIFYING THE LOAD

An important task of the Oracle Insurance Datamarts for Health Administrator is the checking of the load run. That doesn't just mean checking that a process has completed, but also checking that the load run was successful. For example, a process can terminate correctly even though no data is loaded. It is therefore not sufficient just to check that a process has terminated.

**NOTE!!!: If the status of the script in the window above is 'Complete', this does not automatically mean that the script ran successfully. The administrator must perform additional checks to determine if the process ran successfully!**

## PART III APPLICATION MANAGEMENT

### INTRODUCTION

This chapter describes aspects of both the technical and functional application management of Oracle Insurance Datamarts for Health.

### FUNCTIONAL MANAGEMENT

#### Logging and validation

Validation of the Oracle Insurance Datamarts for Health load runs is an important part of the functional/technical management.

Currently, the log information concerning the run load runs can be found in multiple locations. **It is therefore not sufficient just to check the status of the script request in the batch scheduler.** It may be that the status of the script after running the load run is 'Complete', but that errors have in fact occurred. Therefore, the administrator should check the sources of log information described below.

#### Logging of loading

The following views are present in the obd\_own schema to request information on the results of the load run:

##### WBX\_LAADRUNS\_VW

*This view gives a complete overview of all load runs that have taken place. The following is shown for each load run:*

Column	Description
LAADRUN_ID	Unique generated key
RELEASE_NR	Oracle Insurance Datamarts for Health release number
SAV_ID_EXT	ID of script request ZRG0E01S.
SAV_ID_STG	ID of script request ZRG0S01S.
SAV_ID_DWH	ID of script request ZRG0D01S.
DECLARATIES_GELADEN	Indication (J/N [meaning Y/N]) of whether the claims fact is loaded in this run.
VERZEKERDEN_GELADEN	Indication (J/N [meaning Y/N]) of whether the policies fact is loaded in this run.
PREMIES_GELADEN	Indication (J/N [meaning Y/N]) of whether the premiums fact is loaded in this run.
TOE_EN_UITTREDINGEN_GELADEN	Indication (J/N [meaning Y/N]) of whether the In- and Out-fluxes fact is loaded in this run.
ZORGVOORNEMENS_GELADEN	Indication (J/N [meaning Y/N]) of whether the care authorizations fact is loaded in this run.
ABONNEMENTSHONORARIUM_GELADEN	Indication (J/N [meaning Y/N]) of whether the per capita agreement fact is loaded in this run.
VERBINTENISSEN_GELADEN	Indication (J/N [meaning Y/N]) of whether the provider relationships fact is loaded in this run.
DATUM_EXTRACTIE	Date of extraction of the source data
LAADPERIODE_DECLARATIES	Date used for this load as date to for selection of the source data for claims
LAADPERIODE_VERZEKERDEN	Date used for this load as date to for selection of the source data for policies.
LAADPERIODE_PREMIES	Date used for this load as date to for selection of the source data for premiums.



Column	Description
LAADPERIODE_ZORGVOORNEMENS	Date used for this load as date to for selection of the source data for care authorizations.
LAADPERIODE_VERBINTENISSEN	Date used for this load as date from for selection of the source data for provider relationships.
CONTROLE UITGEVOERD	Is the loaded data checked?
DOORLOOPTIJD_EXTRACTIE	Run time of the extraction phase
DOORLOOPTIJD_TRANFORMATIE	Run time of the transformation phase
DOORLOOPTIJD_LADEN	Run time of the load phase
DOORLOOPTIJD_TOTAAL	Total run time of the extraction + transformation + load phase
LAADRUN_ID	Unique generated key
RELEASE_NR	Oracle Insurance Datamarts for Health release number

### WBX\_MAPPING\_VW

In this view all mappings are shown that are run during a load run. The following information is available:

Column	Description
SAV_ID	The ID of the script request from the OHI Back Office batch scheduler
FASE	Phase in which the load run is found
MAPPING_NAAM	Name of the mapping
MAPPING_GESTART	Time when the mapping was started
AANTAL_VERWERKTE_RIJEN	Number of processed rows
AANTAL_FOUTEN	Number of errors arisen
AANTAL_MINUTEN	Number of minutes the mapping took

### WBX\_LAADRUN\_ERRORS\_VW

In this view all errors are shown that have occurred during a load run. This concerns the technical error message that may arise during a mapping. The following information is available:

Column	Description
SAV_ID	The ID of the script request from the OHI Back Office batch scheduler
FASE	Phase in which the load run is found
MAPPING_NAAM	Name of the mapping
TIJDSTIP_FOUT	Time when the error occurred
FOUT_MELDING	Which error occurred

### **WBX logging**

Since there are also a number of non-OWB packages that run during the load run for which no logging exists in the OWB audit logging described above, two logging tables have been added in which logging is also written for the non-OWB packages.

This concerns the tables WBX\_LOG\_EVENTS and WBX\_LOG\_MESSAGES (master – detail).

In WBX\_LOG\_EVENTS the following log data is saved:

Column	Comments
SAV_ID	The ID of the script request from the OHI Back Office batch scheduler
AUDIT_ID	Audit ID of the load run, refers to the ID of the table stg_sys_audit.
SCRIPTNAAM	The code of the script request from the OHI Back Office batch scheduler
STARTTIJD	Start time of the script request
EINDTIJD	End time of the script request
GELADEN_SCHEMAS	The star schemas that have been loaded with this script request
EINDSTATUS	Final status of the script request (Start, Error, Complete)

In WBX\_LOG\_MESSAGES the following log data is saved:

Column	Comments
WB_RT_AUDIT_ID	The OWB runtime audit ID (only for mappings generated by OWB)
SAV_ID	The ID of the script request, the FK column to WBX_LOG_EVENTS.
OBJECT_NAAM	The name of the object (package, procedure, ...) which is being logged.
OPMERKINGEN	Potential remarks (step numbers in the case of partitioning)
STARTTIJD	Start time of the object
EINDTIJD	End time of the object

### Results of the compatibility checks

The views below provide detailed information on the compatibility checks performed between OHI Back Office and Oracle Insurance Datamarts for Health.

#### WBX\_CTR\_DECLARATIES\_VW

This view shows the results of compatibility checks performed on the claim fact.

Column	Description
SAV_ID	The ID of the script request from the OHI Back Office batch scheduler
CTR_ID	Identification of the check result
CODE	Code of the check
OMSCHRIJVING	Description of the check
DCR_NR	Claim number
VOLGNR	Sequence number of the claim line
DATUM_ACCOORD	The date on which the claim line was approved
PAKKET	The product offered by the coverage
VEL_ID	Identification of the journal entry
GRG_NR	General ledger account number
GBF_NR	General ledger unit number
RUK_NR	Category number
DATUM_IMPORT	Date imported of the liability
RISICODRAGER	The relationship number of the insurance company bearing the risk
BETAALMAAND	The month in which the payment took place
SOORT_BEDRAG	The amount type of the columns below
BEDRAG_BO	Total amount of the claim in Oracle Back Office
BEDRAG_BI	Total amount of the claim in Oracle Insurance Datamarts for Health

#### WBX\_CTR\_PREMIES\_VW

This view shows the results of the compatibility check on the premium fact.

Column	Description
SAV_ID	The ID of the script request from the OHI Back Office batch scheduler
CTR_ID	Identification of the check result
CODE	Code of the check
OMSCHRIJVING	Description of the check
DATUM_VA	Start date of the check period
DATUM_TM	End date of the check period
PTL_ID	The unique ID of the premium time line in OHI Back Office
REL_NR	The party number of the member
DATUM_PROLONGATIE	The month for which the renewal was performed
RISICODRAGER	The number of risk bearer
PAKKET	The code of the product
DEKKINGSMAAND	The month for which the coverage applies
SOORT_BEDRAG	Description of the check amount
BEDRAG_BO	The monthly amount of the premium including potential discounts and surcharges in OHI Back Office
BEDRAG_BI	The monthly amount of the premium including potential discounts and surcharges in Oracle Insurance Datamarts for Health

WBX\_CTR\_VERZEKERDEN\_VW

This view shows the results of the compatibility check on the policies fact. For all branded product combinations of a member it is checked that this is present in both OHI Back Office and Oracle Insurance Datamarts for Health.

Column	Description
SAV_ID	The ID of the script request from the OHI Back Office batch scheduler
CTR_ID	Identification of the check result
CODE	Code of the check
OMSCHRIJVING	Description of the check
PEILDATUM	End date of the check period
CLI_REL_NR	The member which is a member of the policy
MERK_CODE	A unique identifying code for the brand
PAKKET_CODE	The product that is offered
PREMIE_CONSTRUCTIE_CODE	The premium structure that is offered in the product
DEKKING_CONSTRUCTIE_CODE	The unique code of the coverage structure unit
EIGEN_RISICO_CONSTRUCTIE_CODE	The unique code of the yearly deductible structure unit
EIGEN_RISICO_HOOGTE_CODE	The code by which the yearly deductible level is identified
ZORGPLICHT_CODE	The code of the contracted care
AANTAL_BI	Number of memberships in Oracle Insurance Datamarts for Health
AANTAL_BO	Number of memberships in OHI Back Office

WBX\_CTR\_ONDERHANDEN\_WERK\_VW

This view shows the results of the compatibility checks on the Work in Progress Claims fact.

Column	Description
SAV_ID	The ID of the script request from the OHI Back Office batch scheduler
CTR_ID	Identification of the check result
CODE	Code of the check
OMSCHRIJVING	Description of the check
DATUM_VA	Start date of the check period
DATUM_TM	End date of the check period
DCR_NR	Claim number
VOLGNR	Sequence number of the claim line
SOORT_BEDRAG	Description of the check amount
BEDRAG_BO	Number or amount of the Work in Progress Claim in OHI Back Office
BEDRAG_BI	Number or amount of the Work in Progress Claim in Oracle Insurance Datamarts for Health

WBX\_CTR\_ZORG\_VOORNEMENS\_VW

This view shows the results of the compatibility checks on the care authorizations fact.

Column	Description
SAV_ID	The ID of the script request from the OHI Back Office batch scheduler
CTR_ID	Identification of the check result
CODE	Code of the check
OMSCHRIJVING	Description of the check
DATUM_VANAF	Start date of the check period
DATUM_TM	End date of the check period
ZVN_NR	Care authorization identification number
VOLGNR	Sequence number of the period within the care authorization
SOORT_BEDRAG	Description of the check amount
BEDRAG_BO	Number or amount of the care authorization in OHI Back Office

Column	Description
BEDRAG_BI	Number or amount of the care authorization in Oracle Insurance Datamarts for Health

## Logging load scripts

The output of the scripts started through the OHI Back Office application are saved in .out files. These files show how the load run ran, including run times and potential errors. These scripts can be found on the OHI Back Office application server under \$OZG\_BASE/out/<user>.

<user>: user used to log in to the batch scheduler to start the load run.

## Authorization

### User access

It is recommended to create a separate account for each user of Oracle Insurance Datamarts for Health. This is particularly convenient from a security standpoint.

This account must be created in the Oracle Insurance Datamarts for Health database. CREATE SESSION rights must be assigned to the account at database level, as well as the database role OBD\_ROL\_SELECT. The database role OBD\_ROL\_SELECT has select rights on all relevant DWH tables and views.

Creating an account in the database and assigning the correct rights/roles can be done in many ways, for example with the following statement in SQL\*Plus:

```
create user username identified by password;  
grant create session to username;  
grant obd_rol_select to username;
```

### External tables

The Oracle Insurance Datamarts for Health load run makes use of external tables. These are files on the server that are treated as tables by the database. These external tables reside on the Oracle Insurance Datamarts for Health database server in the directory referred to by the Unix variable \$OZG\_ADMIN. The input and output (log and bad files) end up in the directory referred to by the Unix variable \$TMP.

Because the database for the external tables has to have a reference to these directories, these directory objects are created in the Oracle Insurance Datamarts for Health database.

These files contain data that can be adjusted by the functional administrator, after which these adjustments are made to the Data Warehouse in the next load run.

---

## Configuration of generic structure for claim properties

### Introduction

It is possible to register a set of claim properties in OHI Back Office, which can be used for a specific claim type (depending on the type of procedure). When a claim property is required for use in OHI Business Intelligence it can be added by means of configuring the external file GEN\_EIGENSCHAPPEN.dat. This file has the following structure:

- GEN\_EIGENSCHAPPEN.dat  
File with containing the mapping definition of claim properties into OHI Business Intelligence.

```

GEBRUIKGROEP    VARCHAR2 (60) ,
EIGENSCHAP    VARCHAR2 (60)
TABEL_SPECIFIEK    VARCHAR2 (30)
KOLOM_SPECIFIEK    VARCHAR2 (30)
TABEL_GENERIEK    VARCHAR2 (30)
KOLOM_GENERIEK    VARCHAR2 (30)

```

GEBRUIKGROEP contains the Procedure Claim Group of the property that is mapped.

EIGENSCHAP contains the exact name of the property as it is defined in OHI Back Office.

Before functionality was used to add the claim property into a generic structure, claim properties were fixed attributes in the data warehouse (fixed properties which were not configurable).

TABEL\_SPECIFIEK contains the specific table where a claim property is a part of. Refer to the examples below for additional details related to this topic. KOLOM\_SPECIFIEK contains the specific attribute name for a claim property that is part of the old fixed structure. Refer to the examples below for additional details related to this topic. Note that the columns are only relevant for properties that were already available in the old structure (release 2012.01 and beyond).

TABEL\_GENERIEK is used to define to which table the claim property should be mapped to, this can be a dimension (DWH\_EWE\_GENERIEK) or the fact table (DWH\_DECLARATIES). Chapter '[When to place a claim property in dimension table](#)' outlines when DWH\_DECLARATIES should be used and when DWH\_EWE\_GENERIEK should be used.

KOLOM\_GENERIEK contains the generic attribute that will contain the value of the claim property in OHI Business Intelligence. Refer to the examples in the next paragraph for additional information related to this topic.



**Note:** Columns TABEL\_SPECIFIEK and KOLOM\_SPECIFIEK may not be changed to another value than specified in the template, these columns are used to enclose the old fixed version. Only TABEL\_GENERIEK and KOLOM\_GENERIEK can be used for customizing the (new) claim properties. This note is only applicable for claim properties that were already available in the old fixed structure. When a new claim property is introduced, the columns TABEL\_SPECIFIEK and KOLOM\_SPECIFIEK must be empty (refer to example 2).



**Note:** Once a claim property is allocated to a generic column, we advise to not reallocate this and allocate another claim property to this same generic column within the same claim procedure group.

Example:

Until 1-6-2012 Property A for claim procedure group 'GRPA' is allocated to generic attribute CHAR\_EIGENSCHAP\_01 in DWH\_EWE\_GENERIEK. After 1-6-2012 the mapping definition is changed: Property B for group 'GRPA' is allocated to generic attribute CHAR\_EIGENSCHAP\_01. This will result in a situation where claims before 1-6-2012 contain Property A in CHAR\_EIGENSCHAP\_01. After 1-6-2012 claims contain PropertyB in CHAR\_EIGENSCHAP\_01.

This situation must be avoided.

## Examples

### Example 1

*Move claim properties that are already present in the old fixed structure to the generic structure.*

The following claim properties of the procedure claim group ‘Tandheelkunde’ are available as fixed columns in OHI Business Intelligence:

Claim Property	BI table	BI column
Aand. prestatiecodelijst	DWH_DECLARATIES	AAND_PRESTATIECODELIJST
Gebitselement	DWH_EWE_TANDHEELKUNDE	TAE_DCL_TND_GEBITSELEMENT
Vlakcode	DWH_EWE_TANDHEELKUNDE	TAE_DCL_TND_VLAK_CODE
Machtigingsnummer	DWH_DECLARATIES	MACHTIGINGSNUMMER
Patientnummer	DWH_DECLARATIES	PATIENTNUMMER
Prestatiecode	DWH_DECLARATIES	PRESTATIECODE
Soort prestatie	DWH_EWE_TANDHEELKUNDE	TAE_SOORT_PRESTATIE
Specialisme	DWH_DECLARATIES	SPEC_VOORSCHRIJVER
Voorschrijver	DWH_DECLARATIES	ZRE_REL_NR_VOORSCHRIJVER

In this example the attributes are moved into generic claim property columns.

In order to load these claim properties into the generic structure, they mapping to the generic structure must be added into the file GEN\_EIGENSCHAPPEN.dat. The claim properties should be loaded into the following generic attributes:

Claim Property	Table	Generic Attribute
Aand. prestatiecodelijst	DWH_DECLARATIES	NUMBER_EIGENSCHAP_01
Gebitselement	DWH_EWE_GENERIEK	NUMBER_EIGENSCHAP_01
Vlakcode	DWH_EWE_GENERIEK	CHAR_EIGENSCHAP_01
Machtigingsnummer	DWH_DECLARATIES	CHAR_EIGENSCHAP_01
Patientnummer	DWH_DECLARATIES	CHAR_EIGENSCHAP_02
Prestatiecode	DWH_DECLARATIES	CHAR_EIGENSCHAP_03
Soort prestatie	DWH_EWE_GENERIEK	NUMBER_EIGENSCHAP_02

In this case the GEN\_EIGENSCHAP.dat should contain the following rows:

GEBRUIKGROEP	EIGENSCHAP	TABEL_SPECIFIEK	KOLOM_SPECIFIEK	TABEL_GENERIEK	KOLOM_GENERIEK
TANDHEELKUNDE	MACHTIGINGSNUMMER	DWH_DECLARATIES	MACHTIGINGSNUMMER	DWH_DECLARATIES	CHAR_EIGENSCHAP_01
TANDHEELKUNDE	PATIENTNUMMER	DWH_DECLARATIES	PATIENTNUMMER	DWH_DECLARATIES	CHAR_EIGENSCHAP_02
TANDHEELKUNDE	PRESTATIECODE	DWH_DECLARATIES	PRESTATIECODE	DWH_DECLARATIES	CHAR_EIGENSCHAP_03
TANDHEELKUNDE	AAND_PRESTATIECODELIJST	DWH_DECLARATIES	AAND_PRESTATIECODELIJST	DWH_DECLARATIES	NUMBER_EIGENSCHAP_01
TANDHEELKUNDE	DCL_TND_VLAK_CODE	DWH_EWE_TANDHEELKUNDE	TAE_DCL_TND_VLAK_CODE	DWH_EWE_GENERIEK	CHAR_EIGENSCHAP_01
TANDHEELKUNDE	DCL_TND_GEBITSELEMENT	DWH_EWE_TANDHEELKUNDE	TAE_DCL_TND_GEBITSELEMENT	DWH_EWE_GENERIEK	NUMBER_EIGENSCHAP_01
TANDHEELKUNDE	SOORT_PRESTATIE	DWH_EWE_TANDHEELKUNDE	TAE_SOORT_PRESTATIE	DWH_EWE_GENERIEK	NUMBER_EIGENSCHAP_04

Column GEBRUIKGROEP contains the procedure claim group as it is defined in OHI Back Office; in this case this is ‘TANDHEELKUNDE’.

The column TABEL\_SPECIFIEK contains the location of the old fixed structure. In this example a few properties are part of DWH\_DECLARATIES and several others are part of DWH\_EWE\_TANDHEELKUNDE.

The column KOLOM\_SPECIFIEK contains the column name in the old structure. TABEL\_SPECIFIEK and KOLOM\_SPECIFIEK are already pre-defined in the template that is provided by Oracle.

The next two columns provide the mapping to the new generic structure. TABEL\_GENERIEK contains the table where the claim property should be loaded and the column KOLOM\_GENERIEK contains the attribute where the claim property is loaded.

The value of the column GEBRUIKGROEP is loaded into DWH\_DECLARATIES (column dwh\_declaraties.gebruikgroep). The combination of the generic column and the column dwh\_declaraties.gebruikgroep determines the functional meaning of the column. In the abovementioned example, the column dwh\_declaraties.char\_eigenschap\_01 for DWH\_DECLARATIES with dwh\_declaraties.gebruikgroep is equal to 'TANDHEELKUNDE', and contains the claim property MACHTIGINGSNUMMER.

#### Example 2:

*A new claim property 'IND\_TAND' is introduced in OHI Back Office for procedure claim group 'TANDHEELKUNDE', this claim property should be added to OHI Business Intelligence. The claim property can have two values in OHI Back Office: 'Y' or 'N'.*

In order to add this claim property, the file GEN\_EIGENSCHAPPEN.dat should be edited. The new property must be added and a column should be defined where the claim property 'IND\_TAND' is loaded into OHI Business Intelligence.

The first thing to decide is whether this property should be loaded into the dimension (DWH\_EWE\_GENERIEK), or into the fact (DWH\_DECLARATIES). When a claim property does not have multiple values, it is recommended to save it in a dimension table for storage optimization. In this case there are only two possible values ('Y' or 'N'); therefore this property should be added to the dimension table DWH\_EWE\_GENERIEK.

The property is a character, in example 1 we already added some properties for the procedure claim group 'TANDHEELKUNDE'; One character claim property is already used for this Procedure Claim Group, namely 'DCL\_TND\_VLAK\_CODE'. This one is mapped to column CHAR\_EIGENSCHAP\_01 in table DWH\_EWE\_GENERIEK. Therefore the new claim property can be added to CHAR\_EIGENSCHAP\_02, this attribute is not yet used for this procedure claim group. The following line should be added to GEN\_EIGENSCHAPPEN.dat:

GEBRUIKGROEP	EIGENSCHAP	TABEL_SPECIFIEK	KOLOM_SPECIFIEK	TABEL_GENERIEK	KOLOM_GENERIEK
TANDHEELKUNDE	IND_TAND			DWH_DECLARATIES	CHAR_EIGENSCHAP_02

The complete file will now look as follows:

GEBRUIKGROEP	EIGENSCHAP	TABEL_SPECIFIEK	KOLOM_SPECIFIEK	TABEL_GENERIEK	KOLOM_GENERIEK
TANDHEELKUNDE	MACHTIGINGSNUMMER	DWH_DECLARATIES	MACHTIGINGSNUMMER	DWH_DECLARATIES	CHAR_EIGENSCHAP_01
TANDHEELKUNDE	PATIENTNUMMER	DWH_DECLARATIES	PATIENTNUMMER	DWH_DECLARATIES	CHAR_EIGENSCHAP_02
TANDHEELKUNDE	PRESTATIECODE	DWH_DECLARATIES	PRESTATIECODE	DWH_DECLARATIES	CHAR_EIGENSCHAP_03
TANDHEELKUNDE	AAND_PRESTATIECODELIJST	DWH_DECLARATIES	AAND_PRESTATIECODELIJST	DWH_DECLARATIES	NUMBER_EIGENSCHAP_01
TANDHEELKUNDE	DCL_TND_VLAK_CODE	DWH_EWE_TANDHEELKUNDE	TAE_DCL_TND_VLAK_CODE	DWH_EWE_GENERIEK	CHAR_EIGENSCHAP_01
TANDHEELKUNDE	DCL_TND_GEBITSELEMENT	DWH_EWE_TANDHEELKUNDE	TAE_DCL_TND_GEBITSELEMENT	DWH_EWE_GENERIEK	NUMBER_EIGENSCHAP_01
TANDHEELKUNDE	SOORT_PRESTATIE	DWH_EWE_TANDHEELKUNDE	TAE_SOORT_PRESTATIE	DWH_EWE_GENERIEK	NUMBER_EIGENSCHAP_04
TANDHEELKUNDE	IND_TAND			DWH_DECLARATIES	CHAR_EIGENSCHAP_02

Note that the columns TABEL\_SPECIFIEK and KOLOM\_SPECIFIEK are not set up for IND\_TAND, this is because this claim property does not exist in the old fixed structure (claim property is added after release 2012.01).

In the situation where both fixed and generic structures are set up, the new records are only loaded in the generic structure; this is due to storage optimization. An exception to this are claim properties that are used for dimension keys, these claim properties are also loaded in the old structure if a definition is available for the generic structure.

#### Example 3:

*Claim property 'MACHTIGINGSNUMMER' for Procedure Claim Group 'TANDHEELKUNDE' should not be loaded in the generic structure but only in the old fixed structure (table: DWH\_DECLARATIES, attribute: MACHTIGINGSNUMMER).*

In this example, the old fixed attribute for 'MAGHTIGINGSNUMMER' should be used. The claim property must not be mapped to a generic attribute. This can be easily done by removing the mapping to the generic table and attribute in GEN\_EIGENSCHAPPEN.dat. The file will look as follows after implementing this:

GEBRUIKGROEP	EIGENSCHAP	TABEL_SPECIFIEK	KOLOM_SPECIFIEK	TABEL_GENERIEK	KOLOM_GENERIEK
TANDHEELKUNDE	MAGHTIGINGSNUMMER	DWH_DECLARATIES	MAGHTIGINGSNUMMER		
TANDHEELKUNDE	PATIENTNUMMER	DWH_DECLARATIES	PATIENTNUMMER	DWH_DECLARATIES	CHAR_EIGENSCHAP_02
TANDHEELKUNDE	PRESTATIECODE	DWH_DECLARATIES	PRESTATIECODE	DWH_DECLARATIES	CHAR_EIGENSCHAP_03
TANDHEELKUNDE	AAND_PRESTATIECODELIJST	DWH_DECLARATIES	AAND_PRESTATIECODELIJST	DWH_DECLARATIES	NUMBER_EIGENSCHAP_01
TANDHEELKUNDE	DCL_TND_VLAK_CODE	DWH_EWE_TANDHEELKUNDE	TAE_DCL_TND_VLAK_CODE	DWH_EWE_GENERIEK	CHAR_EIGENSCHAP_01
TANDHEELKUNDE	DCL_TND_GEBITSELEMENT	DWH_EWE_TANDHEELKUNDE	TAE_DCL_TND_GEBITSELEMENT	DWH_EWE_GENERIEK	NUMBER_EIGENSCHAP_01
TANDHEELKUNDE	SOORT_PRESTATIE	DWH_EWE_TANDHEELKUNDE	TAE_SOORT_PRESTATIE	DWH_EWE_GENERIEK	NUMBER_EIGENSCHAP_04
TANDHEELKUNDE	IND_TAND			DWH_DECLARATIES	CHAR_EIGENSCHAP_02

Note that only TABEL\_SPECIFIEK and KOLOM\_SPECIFIEK are set up for MAGHTIGINGSNUMMER.

Also note that is only relevant for claim properties that were already available in the old fixed structure in OHI Business Intelligence.

### When to place a claim property in a dimension table

There are two places where a claim property can be added in OHI Business Intelligence: fact table DWH\_DECLARATIES and dimension table DWH\_EWE\_GENERIEK.

It is important to make a good decision where to place a claim property in the generic structure. A claim property should be placed in DWH\_DECLARATIES if there are many different potential values for the claim property. For instance the claim property PATIENTNUMMER contains the patient number, this is different for every patient and therefore there are many potential values in OHI Back Office for this claim property. As a result of this it should be placed in DWH\_DECLARATIES. If this is placed in DWH\_EWE\_GENERIEK, the dimension will be very large. A new dimension record will be created for almost every fact record, which results in very insufficient storage optimization.

It can be generally stated that when a claim property has more than a few dozen different values, that it should be placed in the fact table.

### Generate views to create a functional overlay over the generic structure

It is possible to generate a view per Procedure Claim Group that contains a fixed set of DWH\_DECLARATIES attributes and a dynamic created set of claim properties. In DWH\_DECLARTIES and DWH\_EWE\_GENERIEK there is a generic naming convention (e.g. CHAR\_EIGENSCHAP\_01) for claim properties. With the view generator it is possible to create a view that contains all claim properties of a Procedure Claim Group, the attributes will obtain the functional name of the claim property (as defined in GEN\_EIGENSCHAPPEN.dat) instead of the generic name. The view can be used to represent the data with column names that have a functional meaning.

The view can be generated with a procedure that is available in the package WBX\_VIEW\_GENERATOR. The procedure is called WBX\_VIEW\_GENERATOR.GENERATE\_VIEW. This procedure must be executed under the OBD\_OW schema on the OHI Business Intelligence database. It is mandatory to give a value for the parameter 'P\_GEGRUIGKROEP'. This parameter should contain the exact name of the Procedure Claim Group. For example, the view for the Procedure Claim Group 'TANDHEELKUNDE' can be generated with the following statement:

```
exec wbx_view_generator.generate_view('TANDHEELKUNDE');
```

This view can subsequently be used to integrate information into the reporting environment.



## Add claim properties from generic structure to OBI EE repository

This paragraph describes how to add generically mapped claim properties to the OBI EE repository business model.

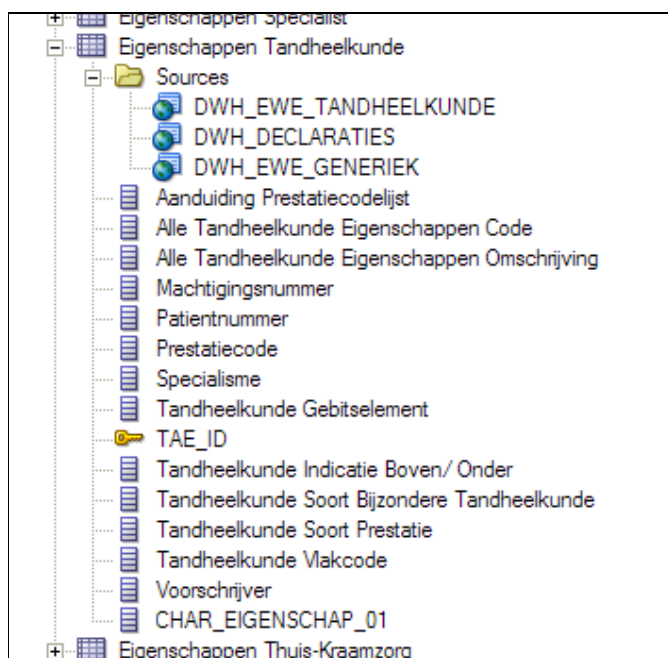
All generic claim property attributes are already added to the physical layer of the OBI EE repository.

How a claim property attribute can be added to the business model layer and presentation layer in OBI EE is described in the following example:

In Procedure Claim Group ‘Tandheelkunde’ the claim property ‘EXAMPLE123’ is added. This column is mapped to ‘CHAR\_EIGENSCHAP\_01’ in DWH\_EWE\_GENERIEK. The claim property ‘EXAMPLE123’ should be added to the logical table ‘Eigenschappen Tandheelkunde’ and should be named ‘Example 123’.

### 1. Add the generic column to the business model

Drag the attribute ‘CHAR\_EIGENSCHAP\_01’ from the Physical Table Source ‘DWH\_EWE\_GENERIEK’ to the Logical Table ‘Eigenschappen Tandheelkunde’. Once this has been done, DWH\_EWE\_GENERIEK is automatically added as a Logical Table Source and CHAR\_EIGENSCHAP\_01 is added to the logical table, represented as follows:



### 2. Rename the column to the functional meaning

Change the name of CHAR\_EIGENSCHAP\_01 to ‘Example 123’ in the logical table

### 3. Add the associated Claim Procedure Group

Due to the fact that generic claim property attributes can have a different functional meaning per Claim Procedure Group, it is needed to add information that CHAR\_EIGENSCHAP\_01 only means ‘Example 123’ as the Claim Procedure Group is equal to ‘TANDHEELKUNDE’. Open the Logical Table Source ‘DWH\_EWE\_GENERIEK’.

After opening the Logical Table Source ‘DWH\_EWE\_GENERIEK’, open the ‘General’ tab. In pane ‘Map to these tables:’ the physical table source ‘DWH\_EWE\_GENERIEK’ is already there. The attribute ‘GEBRUIKGROEP’ from ‘DWH\_DECLARATIES’ is also needed, therefore add

‘DWH\_DECLARATIES’ as physical table by means of selecting the ‘Add’ button:



Add ‘DWH\_DECLARATIES’ as a source

Now open the ‘Column Mapping’ tab. ‘Example 123’ is mapped to CHAR\_EIGENSCHAP\_01. This

is correct, but it only should be mapped as the Claim Property Group is 'TANDHEELKUNDE'. Therefore we need to change the expression. Open the expression editor for

'CHAR\_EIGENSCHAP\_01' by means of using this button:



The editor window is shown. CHAR\_EIGENSCHAP\_01 should be used only if GEBRUIKGROEP is equal to 'TANDHEELKUNDE'. This can be achieved by means of using this expression:

```
Case when "Oracle Health Insurance Business Intelligence", "", "OBD_OWN", "DWH_DECLARATIES", "GEBRUIKGROEP" = 'TANDHEELKUNDE'
then "Oracle Health Insurance Business Intelligence", "", "OBD_OWN", "DWH_EWE_GENERIEK", "CHAR_EIGENSCHAP_01"
else null
end
```

Add the new attribute to the presentation layer

Add 'Example 123' to the Presentation table '- Eigenschappen Tandheelkunde'

Check in the changes, save the repository and the claim property will now be available for end-users.

## TECHNICAL MANAGEMENT

### Cleaning up OWB Audit data

As described earlier, OWB generates audit information while running the OWB mappings. This information is stored in the run time tables of the Oracle Insurance Datamarts for Health repository schema OWBSYS (WB\_RT\_% tables). These tables are located in the OWBSYS tablespace. Every time that it's loaded this tablespace grows.

To avoid this table space becoming too large it is possible to delete (part of) the audit data. A package is available for this in the OWBSYS schema. This is the package **WB\_RT\_API\_PURGE** that contains a number of 'purge' procedures that can remove data in a variety of ways:

purge_execution	All audit data is cleaned
purge_execution (exec_id)	Audit data with rte_id = exec_id is cleaned
purge_execution (start_date, end_date)	All data from the period between the start and end date is cleaned

This audit data forms an important source of information for how a load run has run and for resolving problems. It is therefore important to consider carefully whether the information is genuinely no longer needed before running this procedure.

This data can also be removed using the script purge\_audit\_template.sql in the directory \$ORACLE\_HOME/owb/rtp/sql/.

### New releases of Oracle Insurance Datamarts for Health

When new releases of Oracle Insurance Datamarts for Health are brought out new versions of this documentation will also be supplied via iProjects files.

The Oracle Health Insurance installation menu OZGPATCH must be used for the installation of new Oracle Insurance Datamarts for Health releases or patches. For operation of the installation menu: see document 'PCM02101.pdf' (Oracle Health Insurance Installation of Releases).

## Reorganization of tables

It is recommended to regularly (depending on the load frequency, e.g. once per quarter/half year) reorganize the Data Warehouse facts tables and indexes on facts tables .

For the partitioned facts tables:

- DWH\_AFGeweZEN\_DECLARATIES
- DWH\_DECLARATIES
- DWH\_DECLARATIES\_AGG
- DWH\_DEELNAME\_MUTATIES
- DWH\_ONDERHANDEN\_WERK
- DWH\_PREMIES
- DWH\_VERBINTENISSEN
- DWH\_VERZEKERDEN
- DWH\_ZORG\_VOORNEMENS

this can be done using:

- ALTER TABLE [table name] MOVE PARTITION [partition name]
- ALTER INDEX [index name] REBUILD PARTITION [partition name]

For the non-partitioned facts table:

- DWH\_TOE\_UITTREDINGEN

this can be done using:

- ALTER TABLE [table name] MOVE
- ALTER INDEX [index name] REBUILD

## Compression of partitioned fact tables.

As of Oracle Insurance Datamarts for Health version 2011.03 it is possible to compress the partitioned tables. By compressing large fact tables, a large amount of disk space can be saved.

Step '850 - Partition/compress tables' in OZGPATCH.pl is available for this. This choice is the same for OHI Back Office and Oracle Insurance Datamarts for Health, however the following submenu choices are only shown for Oracle Insurance Datamarts for Health.

```
INFO : =====
INFO : = Redefine a table:                      =
INFO : = C - Compress tables and indexes        =
INFO : = U - Uncompress (revert compression)    =
INFO : =====
INFO : Which table redefinition would you like to execute (C, U)?
```

If 'C'ompress tables and indexes is chosen, then you see a list of tables that can be compressed. By typing in the table name the choice is confirmed and the (sub)partitions of the table are compressed, including local partitioned indexes. For large fact tables this may take a long time. After compression, all local partitioned indexes are no longer usable and have to be rebuilt. Option '870 - Rebuild unusable indexes'

in OZGPATCH.pl is available for this. Rebuilding these 'unusable' indexes can also take a long time if the indexes concern large facts tables.

If 'U'ncompress (revert compression) is chosen, then you see a list of tables that can be uncompressed. The rest of the procedure is the same as for compressing tables. After uncompressing tables, the local partitioned tables must also be rebuilt.



**Note:** Ensure that there is enough disk space available for compression and uncompression.

## OWB Runtime service

As of Oracle Insurance Datamarts for Health version 2010.01, use is made of OWB11g. As a consequence, as well as the Oracle Insurance Datamarts for Health OBD\_OWN schema, an OWB Runtime repository schema OWBSYS and a workspace owner OHI\_BI\_WS\_OWN are also available for the administration of the installation and execution of OWB mappings (see [Server installation](#)).

To enable performance of this administration, the repository makes use of the OWB Runtime Service. This is a process on the server that is started by the OS user oracle when starting the Oracle Insurance Datamarts for Health database.

There are a number of scripts available relating to the management of this runtime service (in \$ORACLE\_HOME/owb/rtp/swl) and these can be run in SQLPlus under the OWBSYS account:

show_service.sql	This script shows the current status of the service.
start_service.sql	This script starts the service.
stop_service.sql	This script stops the service.
service_doctor.sql	This script can be used to perform a diagnosis of the service if it will not start.
reset_repository.sql	Sets the password of the repository owner (OWBSYS) and initializes a number of repository-specific values.

See the header of these scripts for a more detailed explanation of their use.

## PART IV APPENDICES

### APPENDIX A: CLONING ORACLE INSURANCE DATAMARTS FOR HEALTH ENVIRONMENTS

From a management standpoint, it is sometimes necessary to make a copy of an Oracle Insurance Datamarts for Health environment and place it in another environment, for example to make a production environment available on a test environment.

An Oracle Insurance Datamarts for Health environment consists of the repository schema OWBSYS, the OWB workspace owner OHI\_BI\_WS\_OWN and the Oracle Insurance Datamarts for Health schema OBD\_OWN.

Seeing as environment-specific information is stored in the repository, a number of things have to be done after the transfer to adjust this connection information for the new environment to ensure that everything continues to work correctly.

This environment-specific information includes:

- Connection information for the repository
- Connection information relating to the registered locations

For a description of the cloning of an Oracle Insurance Datamarts for Health environment there is a page available on My Oracle Support. See:

How To Update Warehouse Builder After A Database Cloning [ID 434272.1]

This also refers to a Java based tool for correcting the locations used by Oracle Insurance Datamarts for Health:

How To Use The OWB 11.2.0.3 Java Tool oracle.wh.util.locationhelper.LocationTool for Failover [ID 1362745.1]

### APPENDIX B: USE OF WBX\_LAADRUN\_ERRORS\_VW AND WBX\_MAPPINGS\_VW VIEWS.

A number of extra steps are required to use views WBX\_LAADRUN\_ERRORS\_VW and WBX\_MAPPINGS\_VW. This is because, in contrast to older OWB versions, from OWB 11gR2 makes use of workspaces. The WBX\_LAADRUN\_ERRORS\_VW and WBX\_MAPPINGS\_VW views calculate OWB public views in the OWBSYS schema that is subdivided into workspaces. Before the view is calculated it must be specified for which workspace the view should be used. This is done as follows:

Extra grants must be assigned from OWBSYS to OBD\_OWN:

```
grant select on wb_rt_audit to obd_own with grant option;  
grant select on wb_rt_errors to obd_own with grant option;
```

Users who want to calculate the view should be set up as workspace users (of workspace OHI\_BI\_WS) using the OWB Repository assistant (reposinst.sh).

Therefore before the view is used, the following command has to be run:

Execute `owbsys.wb_workspace_management.set_workspace('OHI_BI_WS','OHI_BI_WS_OWN');`

This can potentially be solved using a LOGON trigger:

```
create or replace trigger gebruiker_logon_trigger  
after logon on gebruiker.schema  
begin  
owbsys.wb_workspace_management.set_workspace('OHI_BI_WS','OHI_BI_WS_OWN');  
end;
```

For this, an explicit grant has to first be assigned to 'user' from OWBSYS:

```
grant execute on wb_workspace_management to user;
```

In the example above replace 'user' with the user that wishes to use the named views.

## APPENDIX C: EXADATA USAGE

When migrating to Exadata bear in mind the following migration path.

1. Please refer to chapter C: "Converting to Oracle RAC and Oracle Rac One Node from Single Instance Oracle Database.", "Oracle Real Application Clusters Installation Guide 11g Release 2".
2. Please refer to chapter 8: "Performing Oracle ASM Data Migration with RMAN", "Oracle Automatic Storage Management Administrator's Guide."

After migration steps

Check to see if owbsys or obd\_own accounts are locked

Sqlplus obd\_own/<PASSWORD>

```
select username,account_status,lock_date,expiry_date from dba_users where username in
('OWBSYS','OBD_OWN','OWBRT_SYS','OHI_BI_WS_OWN');
```

If the owbsys repository need to be reset run: \$ORACLE\_HOME/owb/rtp/sql/reset\_repository.sql)

For example:

```
-- reset home
-- all homes on exadata should be located here:
update wb_rt_service_nodes
set server_side_home      = '/u01/app/oracle/product/11.2.0.3/dbhome_1';
--
commit
$ORACLE_HOME/owb/UnifiedRepos/reset_owbcc_home.sql
</u01/app/oracle/product/11.2.0.3/dbhome_1>
```

```
$ORACLE_HOME/owb/rtp/sql/reset_repository.sql
<Password for OWBSYS>
```

Check to see if locations are registered

```
BEGIN
  sys_mapping_util_pck.set_workspace;
END;
/
```

```
SELECT object_name
FROM user_objects
WHERE object_type      = 'PACKAGE BODY'
AND SUBSTR(object_name,1,3) IN ('DWH','STG')      -- Destination
AND SUBSTR(object_name,9,3) IN ('DWH','STG','SRC','EXT') -- Source
MINUS
SELECT wo.object_name FROM owbsys.wb_rt_warehouse_objects wo ORDER BY 1;
/
```

(should not show any rows, if any redo migration, do not unregister locations)

Check to see if OWB is running

```
select sid,serial#,username,status,server,machine,module from gv$session where module = 'OWB_CCS';
```

If there is a module OWB\_CCS then shutdown owb by running:

Sqlplus OWBSYS/<PASSWORD>

```
@$ORACLE_HOME/ owb/rtp/sql/stop_service.sql
```

In release 101201 for Open Beleid the proper execute rights should be granted to Exadata DataMachine machine (770)

```
$ORACLE_HOME/owb/bin/unix/OMBPlus.sh
$ORACLE_HOME/owb/bin/unix/setowbenv.sh
$ORACLE_HOME/owb/bin/unix/ombplus
```

If this is not set correctly patching will fail with a permission denied error

3. Make sure the DB link SRC\_OPENZORG.WORLD point to the correct Open Zorg environment.
4. Grant permissions as per administrator reference on the Open Zorg Database.

```

Sqlplus system/password@BO
grant create session to obd_select_user;
Grant alter session to obd_select_user;
Grant ozg_rol_select to obd_select_user;
Grant select, insert, delete on ozg_owner.geb#obd_declaraties to obd_select_user;
Grant execute on ozg_owner.alg_tab_pck to obd_select_user;
Grant execute on ozg_owner.fin_fpm_vars_pck to obd_select_user;
Grant select on v_$database to obd_select_user;
Grant execute on ozg_owner.geb_odr_pck to obd_select_user;

```

5. Make sure the following patchsets are installed on the Exadata Database Machine: 13257502, 13575868.  
 Note 1: that these patchsets are installed in 2012.01, however if the physical machine changes, the software of new and old machines need to be identical.  
 Note 2: please note that no SQL statements of the patches need to be applied: they should be already applied in 2012.01 (ie only run Opatch apply)

6. Make sure java and xmldb are installed.

7. For multi node RAC: Apply the steps described in "Migrating OWB from Single Instance to **multi node RAC**"  
 For single instance: Apply the steps described in "OWB 11gR2 post-cloning process for OHI Business Intelligence"

8. Gather schema statistics for OBD\_OWN.

9. Make sure the tnsnames.ora entries on application server are pointing to the correct environment for Open Beleid as well as Open Zorg.

10. Recompile schema OBD\_OWN, after which make sure no invalid objects are found in schema OBD\_OWN

```

begin
dbms_utility.compile_schema( schema => user , compile_all =>TRUE, reuse_settings =>TRUE);
end;

```

```

select count(*) from user_objects where status != 'VALID';

```

11. Create wallet entries on Application server for 3 users, and display mkstore is similar to below on the application server.

```

mkstore -wrl . -listCredential

```

```

<db> batch

```

```

<db>_batch batch

```

```

<db>_install obd_own

```

Also make sure there is a tnsnames entry for

```

<db>

```

```

<db>_batch

```

```

<db>_install

```

**To check for multi instance rac node (setup 1, non preferred setup):**

```

mkstore -wrl . -listCredential

```

```

oton1 batch

```

```

oton1_batch batch

```

```

oton1_install obd_own

```

where oton1 is the service\_name which is used for extraction

```

sqlplus /@oton1

```

```

sqlplus /@oton1_batch

```

```

sqlplus /@oton1_install

```

should all be able to connect

**To check for multi instance rac node (setup 2, preferred setup ) or single instance:**

```

mkstore -wrl . -listCredential

```

```

oton batch

```

```

oton_batch batch

```

```

oton_install obd_own

```

where oton is the service\_name which is used for extraction

```

sqlplus /@oton

```

```

sqlplus /@oton_batch

```

```

sqlplus /@oton_install

```

should all be able to connect



12. Make sure the input files of the External tables, are a the OBD\_INPUT location, if not place them in OBD\_INPUT directory and make sure oracle has read, write permissions on that directory.
13. Make sure there is a batch scheduler running on the application server.

Note For **Multi node Rac**: To transfer the service to another node:  
`srvctl modify service -d db_unique_name -s service_name -i old_instance_name -t new_instance_name [-f]`  
also please note that you might need a batch scheduler on the other node, and tnsnames entry on the second node of the first service to be able to connect to the relocated service.

Note for Exadata: the use of a IORM plan is highly recommendable, so is setting the limit clause for a consistent performance experience see MOS "Configuring Exadata I/O Resource Manager for Common Scenarios [ID 1363188.1]"

## APPENDIX D: OWB 11GR2 POST-CLONING PROCESS FOR OHI BUSINESS INTELLIGENCE

The post-cloning process means the steps to be executed after the files of a shutdown OI Claims Data Marts for Health database have been copied and started up again as another database.

This document describes the post-cloning process of an OI Claims Data Marts for Health (a.k.a. OHI Business Intelligence) environment running on an Oracle 11.2.0.3 database and Oracle Warehouse Builder version. It is presumed that the database and owb software for the database to be cloned is in the same Oracle Home as the database that is used for cloning. If this is not the case than the following steps need to be executed first:

– connect as sysdba

– execute `reset_owbcc_home.sql` in `$ORACLE_HOME/owb/UnifiedRepos`  
when asked for the control center home, enter the full path to the `$ORACLE_HOME`  
for instance `/ozg/app/oracle/product/11.2.0.3/db_1`

note: in some instances when running `@start_service.sql` later on to (re)start the CC service this may result in OWB not being able to find the `rrepos.properties` file. In that case please run `reset_owbcc_home.sql` again but now add the owb directory to the path (i.e. `/ozg/app/oracle/product/11.2.0.3/db_1/owb`). After this `start_service` will be able to start normally. When on a rac node, make sure to copy `rrepos.properties` to all other nodes.

The post-clone steps:

1) `. ozg_init.env <sid of the ohi business intelligence database>`

2) `. ozg_init.env DB11G2`

On Exadata or in absence of `ozg_init.env` make sure `ORACLE_HOME` `ORACLE_SID` en `PATH` environmental variables are set.

3) `cd $ORACLE_HOME/owb/rtp/sql`

4) `sqlplus OWBSYS/<password OWBSYS user>`

5) `@reset_repository.sql <password OWBSYS user>`

6) `@stop_service.sql`

7) `exit`

8) start the OWB repository listener (`$OWB_HOME/bin/win32/startOwbblnst.bat` in windows or find the linux equivalent and start it there)

9) start owb repository browser or `openRAB.sh` on linux (do not pay attention to certificate warning) and enter user `OHI_BI_WS_OWN` plus the rest of all the runtime repository database credentials. Click 'locations report' next.

10) Select `LOC_DWH`

Click on the 'Validation' link next to the location.

Change the connection details `HOST`, `PORT` and `SERVICE_NAME` to the appropriate values, they will initially show the values of the database the clone is taken from.

Press 'Update Details'

Enter password for the location (`OBD_OWN` password) and press 'Get Status'. What follows is shown next:

Info	Connection successful
Info	Registered password is same as entered password
Info	This location has been deployed to.
Info	Installed components are at the correct version level (11.2.0.3.0)
Info	Registered connection properties (NLOZ08:1527:OACC) are the same as the connection properties for the Control Center (nloz08:1527:oacc)

	User OBD_OWN is registered as an OWB User.
Info	This Schema contains 2 invalid objects.
Info	All objects are compatible with the current Workspace.
Info	Actual version of this location (11.2) is the same as the version registered in the Control Center (11.2)
Info	There were 0 Warnings and 0 Errors.

*table class = pdf-full-page-width*

On top of the screen 'Connection Tested OK.' is shown.

Execute the same steps for all locations except for the 'PlatformSchema'. This will be changed manually in a later stage of the process. Make sure that you enter the correct service name. Have a look at the example given for LOC\_SRC\_OPENZORG below.

Host: NLOZ11  
Port: 1527  
Service Name: ACCT.WORLD

- press 'update details'
- enter password (ozg\_owner)
- press 'upgrade'
- press 'get status'

For LOC\_SRC\_EXT\_TABLES and LOC\_SRC\_OPENZORG the following is shown.

Info	Connection successful
Info	Registered password is same as entered password
Info	Location is not a deployment candidate so does not have an installed version
Info	Actual version of this location (11.2) is the same as the version registered in the Control Center (11.2)
Info	There were 0 Warnings and 0 Errors.

*table class = pdf-full-page-width*

**Rule of thumb in changing locations is: First change connection details, press 'update details', enter password, press Get Status, enter password press upgrade (button next to password), enter password press Get Status. It may take a short while before the password has been registered.**

11) Log out, close browser and stop browser listener (\$OWB\_HOME/owb/bin/win32/stopOwbbInst.bat)

12) Go back to linux if not already there.

. ozg\_init.env <db\_name>

and

. ozg\_init.env DB11G2

have probably been executed in this session (see step 1 and 2). If not, execute the commands.

13) cd \$ORACLE\_HOME/owb/rtp/sql

14) sqlplus OWBSYS/<password OWBSYS user>

15) @UpdateLocation.sql

*This sql script sets the properties for Host:Port:Service location, SQL\*Net Connection location, and FTP or General file system location in the OWB Client Repository. It must be run from user OWBSYS.*

*The connection type must be Host:Port:Service, or SQL\*Net Connection for Oracle Location, and FTP or General for File System Location. The connection type of a location can not be changed by this script.*

*The location may be registered or unregistered.*

*Restart OWB client in order to see the new version in the UI.*

```
Enter Workspace Name: OHI_BI_WS
Enter Workspace User Name: OHI_BI_WS_OWN
Enter Location Name: LOC_DWH
New Host: nloz08
New Port: 1527
New Service Name: oacc
New Net Service Name:
New Version: 11.2
New File Path:
New FTP Host:
New FTP Path:
Select Workspace Id for workspace OHI_BI_WS and user OHI_BI_WS_OWN
Workspace id = 2
Update location properties for LOC_DWH
Location Type = Oracle Database
Location LOC_DWH Found
Connection Type = Default HOST:PORT:SERVICE Updating...
Updating CMPLocation_Host = nloz08
Updating CMPLocation_Port = 1527
Updating CMPLocation_ServiceName = oacc
Updating CMPLocation_Version = 11.2
PL/SQL procedure successfully completed.
```

Execute the same steps for the locations LOC\_STG, LOC\_WBX, LOC\_SRC\_EXT\_TABLES and LOC\_SRC\_OPENZORG. Be careful to enter the correct LOC\_SRC\_OPENZORG credentials, because they differ from the other locations. In all cases enter the exact same credentials as previously in repository browser screens. In some cases the LOC\_SRC\_OPENZORG is the same as the other locations although this may seem odd, it is not relevant since ETL is executed over a database link in LOC\_DWH and no objects are deployed to LOC\_SRC\_OPENZORG.

16) Now the Control Center must be edited. Update the connect\_spec column in the wb\_rt\_service\_nodes table. Connect\_spec should be updated with host:port:service\_name of the cloned database.

```
update wb_rt_service_nodes
set connect_spec = 'nloz08:1527:oacc'
;
```

```
commit
;
```

@UpdateControlCenter.sql

*This sql script updates the host:port:service, net service name parameters for a control center in the OWB Client Repository. It must be run from user OWBSYS.*

*The connection type must be host:port:service or SQL\*Net Connection. The connection type cannot be changed using this script.*

*The default control center (DEFAULT\_CONTROL\_CENTER) cannot be changed using this script.*

```
Enter Workspace Name: OHI_BI_WS
Enter Workspace User Name: OHI_BI_WS_OWN
Enter Control Center Name: DEFAULT_CONTROL_CENTER
Host: nloz08
Port: 1527
Service Name: oacc
New Net Service Name:
Select Workspace Id for workspace OHI_BI_WS and user OHI_BI_WS_OWN
Workspace id = 2
Update location properties for DEFAULT_CONTROL_CENTER
Location Type =
Control Center DEFAULT_CONTROL_CENTER Found
```

```

Connection Type = Default HOST:PORT:SERVICE Updating...
Updating CMPLocation_Host = nloz08
CMPLocation_Host Not Found Inserting
Updating CMPLocation_Port = 1527
CMPLocation_Port Not Found Inserting
Updating CMPLocation_ServiceName = oacc
PL/SQL procedure successfully completed.

```

Although the script states that the default control center can not be updated, the procedure does what needs to be done.

17) @start\_service.sql

This may fail the first time. Please execute again after a minute and the service will start.

*Role set.*

*Available*

*Database managed service using nloz08:1527:oacc and home /ozg/app/oracle/product/11.2.0.3/db\_1*

*PL/SQL procedure successfully completed.*

Make absolutely sure that the service is DATABASE MANAGED (as opposed to CLIENT MANAGED). If this is not the case straight away, stop and start the service again.

18) @service\_doctor.sql

*Role set.*

```

>>>>> There are errors in one or more PL/SQL packages and functions
Platform properties have been loaded correctly
Platform location has been seeded correctly
NLS messages have been loaded correctly
The platform service is available
Service script is accessible to the database server
Connection information stored within the repository is correct
PL/SQL procedure successfully completed.

```

19) Correct the OBD\_INPUT directory object in the database (login SYS as SYSDBA).

```
SQL> drop directory obd_input;
```

*Directory dropped.*

```
SQL> create directory obd_input as '/ozg/app/oracle/product/Zorg/oacc';
```

*Directory created.*

```
SQL> grant read, write on directory obd_input to public;
```

*Grant succeeded.*

20) Change SRC\_OPENZORG database link to the correct Back Office source.

## APPENDIX E: MIGRATING OWB FROM SINGLE INSTANCE TO MULTI NODE RAC

### Steps for OWB for RAC Environment

#### 1. Create Unique Service Names

```
srvctl add service -d rovac -s rovac1 -r rovac1
srvctl add service -d rovac -s rovac2 -r rovac2
```

#### 2. Start the service

```
srvctl start service -d rovac -s rovac1
srvctl start service -d rovac -s rovac2
```

#### 3. Check the Status of added service's

```
srvctl status service -d rovac
```

```
Service rovac1 is running on instance(s) rovac1
Service rovac2 is running on instance(s) rovac2
```

#### 4. Complete post Clone steps as mentioned in the previous chapter. Please check the instructions mentioned below.

- Use SCAN Address as the Host name for the Locations (SLC03FNR-S-SCAN.US.ORACLE.COM)
- While running @UpdateControlCenter.sql step .. make sure to use the following parameters.

```
Enter Workspace Name:      OHI_BI_WS
Enter Workspace User Name: OHI_BI_WS_OWN
Enter Control Center Name: DEFAULT_CONTROL_CENTER
Host:                     SLC03FNR-S-SCAN.US.ORACLE.COM (Make sure to use SCAN
Address as the host name)
Port:                     1521
Service Name:             ROVAC1 (Make sure you use ROVAC1 and not ROVAC for
Unique Service Name for Each Node)
New Net Service Name:
```

- When running update control center use ROVAC1:

```
update wb_rt_service_nodes
set connect_spec = slc03fnr-s-scan.us.oracle.com:1521:rovac1';

commit;
```

- Since service nodes need to be unique the service name for the node will be different than the service of the location, therefore the following error may be ignored.

```
Error: Registered connection properties (SLC03FNR-S-SCAN.US.ORACLE.COM:1521:ROVAC) are
NOT the same as the connection properties for the Control Center (slc03fnr-s-
scan.us.oracle.com:1521:rovac1)
```

- Location Report Should look as following.

## Control Center Connection

Service Description **slc03fmr-s-scan.us.oracle.com:1521:rovac1**

## Logical Details

<a href="#">Unregister Selected Locations</a>								
<a href="#">Select All</a>   <a href="#">Select None</a>								
Select	Name	Type /	Type Version	Service Description	User	Connect As	Latest Deployment	Validation
<input type="checkbox"/>	<a href="#">PlatformSchema</a>	<a href="#">Control Center</a>	0	slc03fmr-s-scan:1521:rovac1				<a href="#">Unknown</a>
<input type="checkbox"/>	<a href="#">LOC_DWH</a>	Oracle Database	11.2	SLC03FNR-S-SCAN.US.ORACLE.COM:1521:ROVAC		OBD_OWN	2012-04-16 11:25:59	<a href="#">Tested</a>
<input type="checkbox"/>	<a href="#">LOC_SRC_EXT_TABLES</a>	Oracle Database	11.2	SLC03FNR-S-SCAN.US.ORACLE.COM:1521:ROVAC		OBD_OWN		<a href="#">Tested</a>
<input type="checkbox"/>	<a href="#">LOC_SRC_OPENZORG</a>	Oracle Database	11.2	SLC03FNR.US.ORACLE.COM:1521:RVOBD		OBD_SELECT_USER		<a href="#">Tested</a>
<input type="checkbox"/>	<a href="#">LOC_STG</a>	Oracle Database	11.2	SLC03FNR-S-SCAN.US.ORACLE.COM:1521:ROVAC		OBD_OWN	2012-04-16 12:29:01	<a href="#">Tested</a>
<input type="checkbox"/>	<a href="#">LOC_WBX</a>	Oracle Database	11.2	SLC03FNR-S-SCAN.US.ORACLE.COM:1521:ROVAC		OBD_OWN		<a href="#">Tested</a>

## 5. How to Register the Node's for RAC

No need of registering the first node . It will automatically get Registered as 1st Node.

We only need to register the 2nd Node.

**scp /u01/app/oracle/product/11.2.0/dbhome\_1/owb/bin/admin/rtrepos.properties to 2nd Node ---->  
Before Registering this file should be copied to 2nd Node.**

Register Node 2 for RAC Services .  
Login to Node 2 and perform the following steps.

```
. ozg_init.env rovac2
. ozg_init.env DB11G2
set the Appropriate DISPLAY according to the VNC Session (eg: export DISPLAY=:10.0) if vnc running on port 10
```

```
On Exadata above steps would be:
export ORACLE_HOME=/u01/app/oracle/product/11.2.0.3/dbhome_1
export ORACLE_SID=<SID>
export PATH=$ORACLE_HOME/bin:$PATH
export DISPLAY=:<displaynumber>
```

```
cd $ORACLE_HOME/owb/bin/unix
./reposinst.sh
```

Enter the Hostname as Node2 Host name (SLC03FNS.US.ORACLE.COM)  
Port 1521  
Oracle Service Name = rovac2 (2nd Node Unique Service Name)

Repository Assistant - Step 1 of 11: Database Information

### Database Information

Enter the database connection information.

Host Name:

Port Number:

Oracle Service Name:

☐ SQL\*NET Connection

Net Service Name:

Click Next to continue.

Help < Back Next > Finish Cancel

Select Register a Real Application Cluster Instance Option and click on Next

Repository Assistant - Step 2 of 11: Choose Operation

### Choose Operation

Select one of the following options.

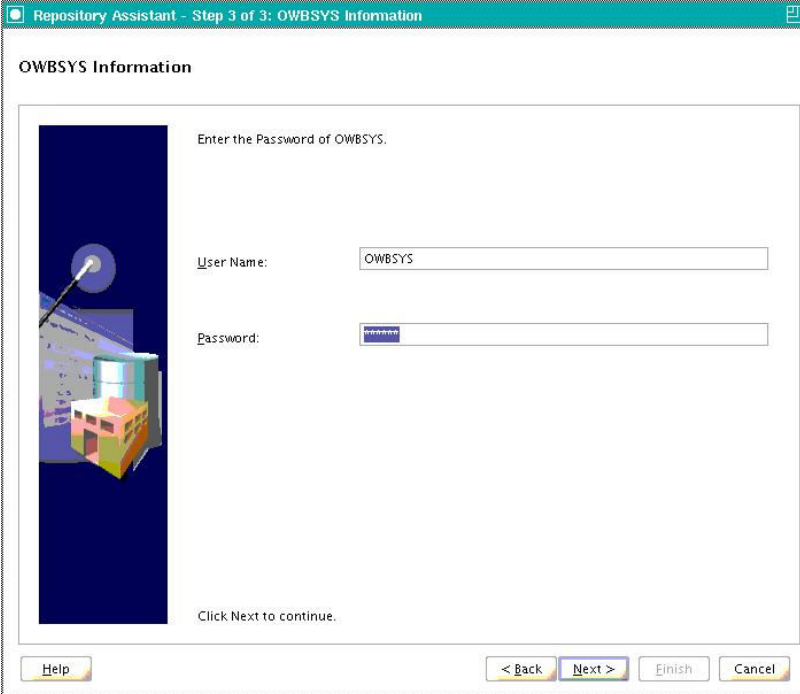
- ☐ Manage Warehouse Builder workspaces
- ☐ Manage Warehouse Builder workspace users
- ☐ Add display languages to repository
- ☒ Register a Real Application Cluster instance
- ☐ Upgrade repository to current release of Oracle Warehouse Builder
- ☐ Manage J2EE user account
- ☐ Manage optional features

Click Next to continue.

Help < Back Next > Finish Cancel

Enter the owbsys password and click on Next





Repository Assistant - Step 3 of 3: OWBSYS Information

OWBSYS Information

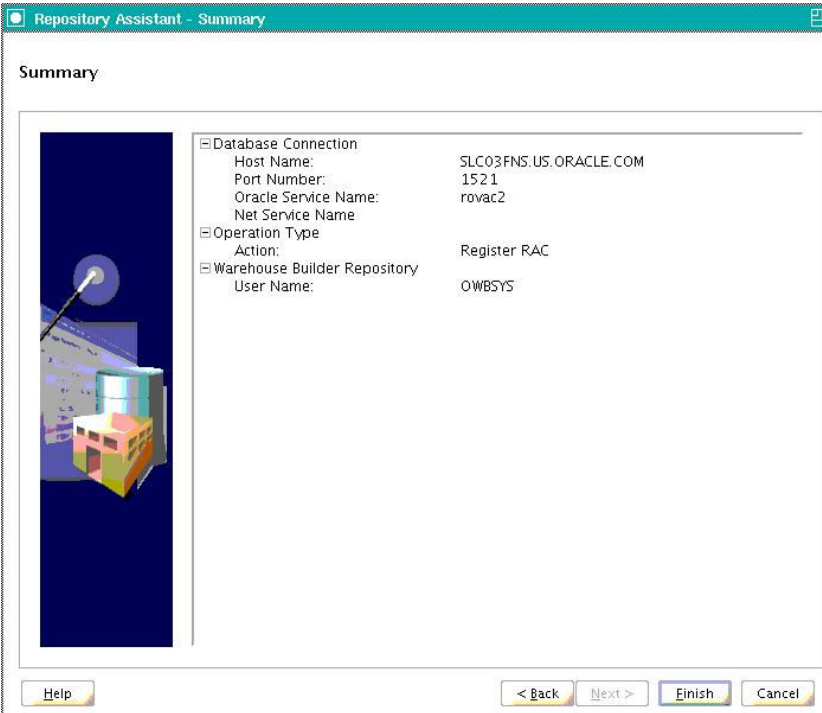
Enter the Password of OWBSYS.

User Name: OWBSYS

Password:

Click Next to continue.

Help < Back Next > Finish Cancel



Repository Assistant - Summary

Summary

Database Connection

Host Name:	SLC03FNS.US.Oracle.COM
Port Number:	1521
Oracle Service Name:	rovac2
Net Service Name:	

Operation Type

Action:	Register RAC
---------	--------------

Warehouse Builder Repository

User Name:	OWBSYS
------------	--------

Help < Back Next > Finish Cancel

Click on Finish.

A Message will appear that it has successfully registered the Node.

To Verify the Node is Registered do the following.  
Start the Repository Browser Listener:

```
./startOwbbInst.sh
```

Login to Repository Browser Listener

<https://slc03fns.us.oracle.com:8999/owbb/RABLogin.uix>

Click on Service Node Report.. Following should be visible.

OWBSYS Password

Select	Instance Number /	Instance Name	Control Center Version	Host	Port	Service Name	Net Service Name	Server Side Home	Enabled	Active
<input type="checkbox"/>	1	slc03fmr:rovac1,	11.2.0.3.0	slc03fmr-s-scan	1521	rovac1		/u01/app/oracle/product/11.2.0/dbhome_1	<input checked="" type="checkbox"/>	<input checked="" type="checkbox"/>
<input type="checkbox"/>	2	slc03fms:rovac2,	11.2.0.3.0	SLC03FNR-s-scan.US.ORACLE.COM	1521	rovac2		/u01/app/oracle/product/11.2.0/dbhome_1	<input checked="" type="checkbox"/>	<input type="checkbox"/>

The first time you login the 2nd node will not be enabled . whether to enable node 2 depends on the setup you choose. Please refer to the next paragraph for the details, the default situation is 2 nodes enabled.

This screen shows that Unique Service names are used for each instance . ROVAC1 and ROVAC2.

#### How To Verify if OWB is Installed Correctly on RAC and Exadata (Doc ID 455999.1)

##### 1. UNIQUE Service Names

```
srvctl status service -d rovac
```

Service rovac1 is running on instance(s) rovac1

Service rovac2 is running on instance(s) rovac2

##### 2. LISTENER Configuration

We are using SCAN listener . so tnsnames.ora file has been updated as follows.

```
ROVAC1 =
(DESCRIPTION =
  (ADDRESS_LIST =
    (ADDRESS = (PROTOCOL = TCP) (HOST = slc03fmr-vip.us.oracle.com) (PORT = 1521))
  )
  (CONNECT_DATA =
    (SERVICE_NAME = rovac1)
  )
)

ROVAC2 =
(DESCRIPTION =
  (ADDRESS_LIST =
    (ADDRESS = (PROTOCOL = TCP) (HOST = slc03fms-vip.us.oracle.com) (PORT = 1521))
  )
  (CONNECT_DATA =
    (SERVICE_NAME = rovac2)
  )
)
```

##### 3. To get the instance and status per node, execute the following command on one of the nodes:

```
select inst_id
,      instance_number
,      instance_name
,      database_status
,      status
,      host_name
from   gv$instance
;
```

INST_ID	INSTANCE_NUMBER	INSTANCE_NAME	DATABASE_STATUS	STATUS	HOST_NAME
1	1	rovac1	ACTIVE	OPEN	slc03fmr
2	2	rovac2	ACTIVE	OPEN	slc03fms

##### 4. To get the service\_name for all nodes, execute the following command on one of the nodes:

```
select inst_id
,      name
from   gv$services
;
```

INST_ID	NAME
1	rovac1
2	rovac2

##### 5. If the service\_names have been assigned to the instances, use following query to verify this.

```

select s.inst_id
,      instance number
,      instance name
,      name service_name
,      host name
from   gv$services s
,      gv$instance i
where  s.inst_id = i.inst_id
;

```

INST_ID	INSTANCE_NUMBER	INSTANCE_NAME	SERVICE_NAME	HOST_NAME
1	1	rovac1	rovac1	slc03fnr
2	2	rovac2	rovac2	slc03fns

## 6. How the OWB configuration should look like

For OWB 11.2 queries are as follows:

```
select * from owbsys.owbrtps;
```

```
KEY VALUE
```

```

-----
11.2.0.3.0[2] /u01/app/oracle/product/11.2.0/dbhome_1
11.2.0.3.0[1] /u01/app/oracle/product/11.2.0/dbhome_1

```

## 7. Check Service Node Report under OWB Browser Listener

<https://slc03fnr.us.oracle.com:8999/owbb/RABLogin.uix>

```

1 slc03fnr:rovac1 11.2.0.3.0 SLC03FNR.US.ORACLE.COM 1521 ROVAC1
/u01/app/oracle/product/11.2.0/dbhome_1
2 slc03fns:rovac2 11.2.0.3.0 SLC03FNS.US.ORACLE.COM 1521 ROVAC2
/u01/app/oracle/product/11.2.0/dbhome_1

```

## 8. Enable all RAC nodes

```

select schema_user, what,
to_char(last_date, 'DD-MON-YYYY HH24:MI:SS') last_date,
to_char(next_date, 'DD-MON-YYYY HH24:MI:SS') next_date
from user_jobs
where what like '%check_service%'

```

SCHEMA_USER	WHAT	LAST_DATE	NEXT_DATE
OWBSYS	wb_rti_service_job.check_service(1);	09-OKT-2012 09:27:54	09-OKT-2012 09:33:54
OWBSYS	wb_rti_service_job.check_service(26);	09-OKT-2012 09:27:54	09-OKT-2012 09:33:54

```

begin
wb_rti_service_job.check_service(1);
wb_rti_service_job.check_service(26);
end;
/

```

## 9. Locations

Locations that point to the RAC should be using Net Service Names. If host:port:service Locations are used, this would cause mappings to connect to a specific RAC node during mapping execution. A crash of such a node would stop the mapping. This can be prevented by using Net Service Names Locations.

## Reference MOS Note ID's used to configure .

1. How to Install a Warehouse Builder Repository on a RAC (Doc ID 459961.1)
2. How To Verify if OWB is Installed Correctly on RAC and Exadata (Doc ID 455999.1)
3. How to Regenerate the rtrepos.properties File (Doc ID 473151.1)
4. Option To Register Node is Missing when Configuring OWB 11g On RAC (Doc ID 791362.1)

## OWB RAC RATIONALE

With regard to RAC there are two configuration modes or rather setups possible. In Setup 1 there is one RAC node exclusively for ETL, and one exclusively for “Query”. Setup 2 has two nodes, both for query and for ETL.

In setup 1 ETL was performed on one node, and node 2 was queried constantly by two “Query” sessions over a database link. The databaselink connected to node 2 only.

In setup 2 ETL was performed on both nodes and both nodes were queried constantly by two “Query” sessions over a database link. The database link connected to the service.

Multiple tests were performed to define optimum: Setup 1 or Setup 2. AWR snapshots were taken during the tests. Below is a snippet from the AWR report from Setup 1

### Global Cache Load Profile

	Per Second	Per Transaction
Global Cache blocks received:	1.14	17.69
Global Cache blocks served:	1.58	24.40
GCS/GES messages received:	130.18	2,013.60
GCS/GES messages sent:	72.16	1,116.16
DBWR Fusion writes:	0.05	0.72
Estd Interconnect traffic (KB)	83.06	

Below is a snippet from the AWR report from Setup 2

### Global Cache Load Profile

	Per Second	Per Transaction
Global Cache blocks received:	0.39	4.87
Global Cache blocks served:	1.07	13.45
GCS/GES messages received:	75.68	950.75
GCS/GES messages sent:	42.95	539.55
DBWR Fusion writes:	0.03	0.39
Estd Interconnect traffic (KB)	46.50	

From this can be deducted that there is far more communication between the nodes in Setup 1 than in Setup 2. Although this might look strange since Partition Exchange Loading is used (PEL), this is actually not strange since PEL only is used in the fact tables and not in dimension tables.

Extraction Transformation and Loading Times:

Setup 1 approx: 5hr:20 min

Setup 2 approx: 4hrs:53 min

From the tests is also concluded that Setup 2 performed ETL quicker than Setup 1, although the load times did not differ too much. Therefore preferred setup is setup 2, ETL and Query on both nodes.

## OWB RAC SETUP 1

This setup describes pinning the ETL to node 1, reason for this is that other queries can be directed to node 2.

This Oracle Warehouse Builder setup for OHI Business Intelligence consists of the following;

OHI Back Office - on multi node rac node 1 and node 2

OHI Business Intelligence - on multi node rac, with OWB configured to run ETL on node1, node 2 is for custom ETL and query (EUL).

Setup 1 relies on an application server with wallet and tnsnames entry rovac1; sqlplus connects to the first node. In the Runtime Audit Browser only one node is enabled for ETL.

### Service Nodes

OWBSYS Password

[Select All](#) | [Select None](#)

Select	Instance Number /	Instance Name	Control Center Version	Host	Port	Service Name	Net Service Name	Server Side Home	Enabled	Active
<input type="checkbox"/>	1	slc03fmr:rovac1	11.2.0.3.0	slc03fmr-s-scan	1521	rovac1		/u01/app/oracle /product/11.2.0 /dbhome_1	<input checked="" type="checkbox"/>	<input checked="" type="checkbox"/>
<input type="checkbox"/>	2	slc03fms:rovac2	11.2.0.3.0	SLC03FNR- s-scan.US.ORACLE.COM	1521	rovac2		/u01/app/oracle /product/11.2.0 /dbhome_1	<input type="checkbox"/>	<input type="checkbox"/>

Queries are bound to the instance by an after logon trigger or database parameter:

parallel\_force\_local = true

```
CREATE OR REPLACE TRIGGER trg_parallel_force_local AFTER logon ON database
DECLARE
  l_osuser          VARCHAR2(1000);
  l_application_server VARCHAR2(1000);
BEGIN
  SELECT lower(sys_context('USERENV', 'OS_USER')) l_osuser,
         lower(sys_context('USERENV', 'HOST')) l_application_server
  INTO l_osuser,
       l_application_server
  FROM DUAL;
  IF USER = 'BATCH' AND l_osuser = 'batch'
    AND l_application_server = 'slc03fmr'
  THEN --- change l_application_server to the name of your application server
    execute immediate 'ALTER session SET parallel_force_local = true';
  END IF;
END;
/
```

The wallet entries on the application server are directed to the first instance (node 1), and “Scriptaanvragen” are supplied with the ORACLE\_SID of the first node.

## OWB RAC SETUP 2

This setup describes ETL that can run on both nodes, this is the preferred setup.

OHI Back Office - on multi node rac

OHI Business Intelligence - on multi node rac with OWB to configured ETL to run on both nodes, and custom ETL / query (EUL) on two nodes.

In the Runtime Audit Browser two nodes are enabled for ETL.

OWBSYS Password

[Select All](#) | [Select None](#)

Select	Instance Number /	Instance Name	Control Center Version	Host	Port	Service Name	Net Service Name	Server Side Home	Enabled	Active
<input type="checkbox"/>	1	slc03fmr:rovac1,	11.2.0.3.0	slc03fmr-s-scan	1521	rovac1		/u01/app/oracle/product/11.2.0/dbhome_1	<input checked="" type="checkbox"/>	<input checked="" type="checkbox"/>
<input type="checkbox"/>	2	slc03fms:rovac2,	11.2.0.3.0	SLC03FNR-s-scan.US.ORACLE.COM	1521	rovac2		/u01/app/oracle/product/11.2.0/dbhome_1	<input checked="" type="checkbox"/>	<input type="checkbox"/>

Queries are not bound to the instance by either a logon trigger or database parameter:

`parallel_force_local = false`

```
CREATE OR REPLACE TRIGGER trg_parallel_force_local AFTER logon ON database
DECLARE
    l_osuser          VARCHAR2(1000);
    l_application_server VARCHAR2(1000);
BEGIN
    SELECT lower(sys_context('USERENV', 'OS_USER')) l_osuser,
           lower(sys_context('USERENV', 'HOST')) l_application_server
    INTO l_osuser,
         l_application_server
    FROM DUAL;
    IF USER = 'BATCH' AND l_osuser = 'batch' AND l_application_server = 'slc03fmr'
    THEN --- change l_application_server to the name of your application server
        execute immediate 'ALTER session SET parallel_force_local = false;
    END IF;
END;
/
```

The wallet entries on the application server are directed to the service, not to a specific node.