
PeopleTools 8.53: Getting Started with PeopleTools

February 2013

PeopleTools 8.53: Getting Started with PeopleTools
CDSKU pt853pbr0
Copyright © 1988, 2013, Oracle and/or its affiliates. All rights reserved.

Trademark Notice

Oracle and Java are registered trademarks of Oracle and/or its affiliates. Other names may be trademarks of their respective owners.

License Restrictions Warranty/Consequential Damages Disclaimer

This software and related documentation are provided under a license agreement containing restrictions on use and disclosure and are protected by intellectual property laws. Except as expressly permitted in your license agreement or allowed by law, you may not use, copy, reproduce, translate, broadcast, modify, license, transmit, distribute, exhibit, perform, publish or display any part, in any form, or by any means. Reverse engineering, disassembly, or decompilation of this software, unless required by law for interoperability, is prohibited.

Warranty Disclaimer

The information contained herein is subject to change without notice and is not warranted to be error-free. If you find any errors, please report them to us in writing.

Restricted Rights Notice

If this is software or related documentation that is delivered to the U.S. Government or anyone licensing it on behalf of the U.S. Government, the following notice is applicable:

U.S. GOVERNMENT END USERS: Oracle programs, including any operating system, integrated software, any programs installed on the hardware, and/or documentation, delivered to U.S. Government end users are “commercial computer software” pursuant to the applicable Federal Acquisition Regulation and agency-specific supplemental regulations. As such, use, duplication, disclosure, modification, and adaptation of the programs, including any operating system, integrated software, any programs installed on the hardware, and/or documentation, shall be subject to license terms and license restrictions applicable to the programs. No other rights are granted to the U.S. Government.

Hazardous Applications Notice

This software or hardware is developed for general use in a variety of information management applications. It is not developed or intended for use in any inherently dangerous applications, including applications that may create a risk of personal injury. If you use this software or hardware in dangerous applications, then you shall be responsible to take all appropriate failsafe, backup, redundancy, and other measures to ensure its safe use. Oracle Corporation and its affiliates disclaim any liability for any damages caused by use of this software or hardware in dangerous applications.

Third Party Content, Products, and Services Disclaimer

This software or hardware and documentation may provide access to or information on content, products and services from third parties. Oracle Corporation and its affiliates are not responsible for and expressly disclaim all warranties of any kind with respect to third-party content, products, and services. Oracle Corporation and its affiliates will not be responsible for any loss, costs, or damages incurred due to your access to or use of third-party content, products, or services.

Contents

Preface.....	vii
Understanding the PeopleSoft Online Help and PeopleBooks.....	vii
PeopleSoft Hosted Documentation.....	vii
Locally Installed Help.....	vii
Downloadable PeopleBook PDF Files.....	vii
Common Help Documentation.....	vii
Typographical Conventions.....	viii
ISO Country and Currency Codes.....	ix
Region and Industry Identifiers.....	ix
Access to Oracle Support.....	x
Documentation Accessibility.....	x
Using and Managing the PeopleSoft Online Help.....	x
PeopleTools Related Links.....	x
Contact Us.....	xi
Follow Us.....	xi
Chapter 1: Getting Started with Enterprise PeopleTools.....	13
Getting Started with Enterprise PeopleTools.....	13
Enterprise PeopleTools Overview.....	13
Enterprise PeopleTools Implementation.....	14
Chapter 2: Development Tools.....	15
Development Tools.....	15
Understanding Development Tools.....	15
PeopleSoft Application Designer.....	15
PeopleCode.....	16
PeopleSoft Application Engine.....	17
Global Technology.....	17
PeopleTools Internet Technology.....	18
PeopleSoft Documents Technology.....	18
PeopleSoft Search Technology.....	18
PeopleSoft Search Framework.....	19
PeopleSoft Search.....	19
Chapter 3: Administration Tools.....	21
Administration Tools.....	21
Understanding Administration Tools.....	21
PeopleTools Security.....	21
PeopleSoft Performance Monitor.....	22
PeopleSoft Diagnostic Framework.....	23
PeopleSoft Data Mover.....	23
PeopleSoft Data Archive Manager.....	23
Data Integrity Tools.....	24
PeopleTools Utilities.....	24
PeopleSoft Configuration Manager.....	25
Additional Administration Utilities.....	25
Oracle Enterprise Manager.....	25
Oracle Configuration Manager.....	26
Chapter 4: Analytic Tools.....	27
Analytic Tools.....	27

Understanding Analytic Tools.....	27
PeopleSoft Query.....	27
PeopleSoft Analytic Calculation Engine.....	28
PeopleSoft Cube Builder.....	28
PS/nVision.....	28
BI Publisher for PeopleSoft.....	29
Crystal Reports for PeopleSoft.....	30
SQR for PeopleSoft.....	30
PeopleSoft Tree Manager.....	30
PeopleSoft Process Scheduler.....	31
Reporting Web Services.....	31
Chapter 5: Integration Tools.....	33
Integration Tools.....	33
Understanding Integration Tools.....	33
PeopleSoft Integration Broker.....	34
Feed Publishing Framework.....	34
PeopleSoft Component Interfaces.....	35
File Interfaces.....	35
Supported Integration Tools.....	36
Integration Testing Tools.....	37
Send Master Utility.....	37
Simple Post Utility.....	37
Automated Integration Point Testing.....	37
Transformation Test Utility.....	38
Handler Tester.....	38
Schema Tester.....	38
Enterprise Integration Utilities.....	39
Publish Utility.....	39
Error Handling Utility.....	39
Effective Date Publish Utility.....	40
Flat File Utility.....	40
XML Schema Utility.....	40
Workflow Technology.....	40
PeopleSoft MultiChannel Framework.....	41
Chapter 6: Lifecycle Management Tools.....	43
Lifecycle Management Tools.....	43
Understanding Lifecycle Management Tools.....	43
Change Assistant.....	43
Data Migration Workbench.....	44
Change Impact Analyzer.....	44
Setup Manager.....	44
Application Designer.....	45
PeopleSoft Test Framework.....	45
Chapter 7: Viewing PeopleTools Within Implementation Phases.....	47
Viewing PeopleTools Within Implementation Phases.....	47
Understanding the Phases of Implementation.....	47
Using PeopleTools within Implementation Phases.....	47
Chapter 8: PeopleSoft Internet Architecture.....	51
PeopleSoft Internet Architecture.....	51
Understanding the PeopleSoft Topology.....	51
PeopleSoft Database.....	52

PeopleSoft Application Server.....	54
Web Server.....	55
PeopleTools Development Environment.....	55
Application Access Types.....	56

Preface

Understanding the PeopleSoft Online Help and PeopleBooks

The PeopleSoft Online Help is a website that enables you to view all help content for PeopleSoft Applications and PeopleTools. The help provides standard navigation and full-text searching, as well as context-sensitive online help for PeopleSoft users.

PeopleSoft Hosted Documentation

You access the PeopleSoft Online Help on Oracle's PeopleSoft Hosted Documentation website, which enables you to access the full help website and context-sensitive help directly from an Oracle hosted server. The hosted documentation is updated on a regular schedule, ensuring that you have access to the most current documentation. This reduces the need to view separate documentation posts for application maintenance on My Oracle Support, because that documentation is now incorporated into the hosted website content. The Hosted Documentation website is available in English only.

Locally Installed Help

If your organization has firewall restrictions that prevent you from using the Hosted Documentation website, you can install the PeopleSoft Online Help locally. If you install the help locally, you have more control over which documents users can access and you can include links to your organization's custom documentation on help pages.

In addition, if you locally install the PeopleSoft Online Help, you can use any search engine for full-text searching. Your installation documentation includes instructions about how to set up Oracle Secure Enterprise Search for full-text searching.

See *PeopleTools 8.53 Installation* for your database platform, "Installing PeopleSoft Online Help." If you do not use Secure Enterprise Search, see the documentation for your chosen search engine.

Note: Before users can access the search engine on a locally installed help website, you must enable the Search portlet and link. Click the Help link on any page in the PeopleSoft Online Help for instructions.

Downloadable PeopleBook PDF Files

You can access downloadable PDF versions of the help content in the traditional PeopleBook format. The content in the PeopleBook PDFs is the same as the content in the PeopleSoft Online Help, but it has a different structure and it does not include the interactive navigation features that are available in the online help.

Common Help Documentation

Common help documentation contains information that applies to multiple applications. The two main types of common help are:

- Application Fundamentals

- Using PeopleSoft Applications

Most product lines provide a set of application fundamentals help topics that discuss essential information about the setup and design of your system. This information applies to many or all applications in the PeopleSoft product line. Whether you are implementing a single application, some combination of applications within the product line, or the entire product line, you should be familiar with the contents of the appropriate application fundamentals help. They provide the starting points for fundamental implementation tasks.

In addition, the *PeopleTools: PeopleSoft Applications User's Guide* introduces you to the various elements of the PeopleSoft Pure Internet Architecture. It also explains how to use the navigational hierarchy, components, and pages to perform basic functions as you navigate through the system. While your application or implementation may differ, the topics in this user's guide provide general information about using PeopleSoft Applications.

Typographical Conventions

The following table describes the typographical conventions that are used in the online help.

<i>Typographical Convention</i>	<i>Description</i>
Bold	Highlights PeopleCode function names, business function names, event names, system function names, method names, language constructs, and PeopleCode reserved words that must be included literally in the function call.
<i>Italics</i>	Highlights field values, emphasis, and PeopleSoft or other book-length publication titles. In PeopleCode syntax, italic items are placeholders for arguments that your program must supply. Italics also highlight references to words or letters, as in the following example: Enter the letter <i>O</i> .
Key+Key	Indicates a key combination action. For example, a plus sign (+) between keys means that you must hold down the first key while you press the second key. For Alt+W, hold down the Alt key while you press the W key.
Monospace font	Highlights a PeopleCode program or other code example.
. . . (ellipses)	Indicate that the preceding item or series can be repeated any number of times in PeopleCode syntax.
{ } (curly braces)	Indicate a choice between two options in PeopleCode syntax. Options are separated by a pipe ().
[] (square brackets)	Indicate optional items in PeopleCode syntax.

<i>Typographical Convention</i>	<i>Description</i>
& (ampersand)	When placed before a parameter in PeopleCode syntax, an ampersand indicates that the parameter is an already instantiated object. Ampersands also precede all PeopleCode variables.
⇒	This continuation character has been inserted at the end of a line of code that has been wrapped at the page margin. The code should be viewed or entered as a single, continuous line of code without the continuation character.

ISO Country and Currency Codes

PeopleSoft Online Help topics use International Organization for Standardization (ISO) country and currency codes to identify country-specific information and monetary amounts.

ISO country codes may appear as country identifiers, and ISO currency codes may appear as currency identifiers in your PeopleSoft documentation. Reference to an ISO country code in your documentation does not imply that your application includes every ISO country code. The following example is a country-specific heading: "(FRA) Hiring an Employee."

The PeopleSoft Currency Code table (CURRENCY_CD_TBL) contains sample currency code data. The Currency Code table is based on ISO Standard 4217, "Codes for the representation of currencies," and also relies on ISO country codes in the Country table (COUNTRY_TBL). The navigation to the pages where you maintain currency code and country information depends on which PeopleSoft applications you are using. To access the pages for maintaining the Currency Code and Country tables, consult the online help for your applications for more information.

Region and Industry Identifiers

Information that applies only to a specific region or industry is preceded by a standard identifier in parentheses. This identifier typically appears at the beginning of a section heading, but it may also appear at the beginning of a note or other text.

Example of a region-specific heading: "(Latin America) Setting Up Depreciation"

Region Identifiers

Regions are identified by the region name. The following region identifiers may appear in the PeopleSoft Online Help:

- Asia Pacific
- Europe
- Latin America
- North America

Industry Identifiers

Industries are identified by the industry name or by an abbreviation for that industry. The following industry identifiers may appear in the PeopleSoft Online Help:

- USF (U.S. Federal)
- E&G (Education and Government)

Access to Oracle Support

Oracle customers have access to electronic support through My Oracle Support. For information, visit <http://www.oracle.com/pls/topic/lookup?ctx=acc&id=info> or visit <http://www.oracle.com/pls/topic/lookup?ctx=acc&id=trs> if you are hearing impaired.

Documentation Accessibility

For information about Oracle's commitment to accessibility, visit the Oracle Accessibility Program website at <http://www.oracle.com/pls/topic/lookup?ctx=acc&id=docacc>.

Using and Managing the PeopleSoft Online Help

Click the Help link in the universal navigation header of any page in the PeopleSoft Online Help to see information on the following topics:

- What's new in the PeopleSoft Online Help.
- PeopleSoft Online Help accessibility.
- Accessing, navigating, and searching the PeopleSoft Online Help.
- Managing a locally installed PeopleSoft Online Help website.

PeopleTools Related Links

[Oracle's PeopleSoft PeopleTools 8.53 Documentation Home Page \[ID 1494462.1\]](#)

[PeopleSoft Information Portal on Oracle.com](#)

[My Oracle Support](#)

[PeopleSoft Training from Oracle University](#)

[PeopleSoft Video Feature Overviews on YouTube](#)

Contact Us

Send us your suggestions Please include release numbers for the PeopleTools and applications that you are using.

Follow Us

.

Get the latest PeopleSoft updates on [Facebook](#).

.

Follow PeopleSoft on [Twitter@PeopleSoft_Info](#).

Getting Started with Enterprise PeopleTools

Getting Started with Enterprise PeopleTools

This topic provides an overview of the contents of this book.

Enterprise PeopleTools Overview

Enterprise PeopleTools provides the underlying technology for PeopleSoft applications. All PeopleSoft Enterprise applications, such as Human Capital Management and Customer Relationship Management are built, deployed, and maintained using Enterprise PeopleTools.

With Enterprise PeopleTools you can:

- Develop new applications or customize existing applications.
- Administer applications that you have deployed within your organization.
- Provide decision support and reporting functionality to decision makers.
- Integrate PeopleSoft applications with other PeopleSoft applications or third party applications.
- Upgrade and update your applications as part of system lifecycle management.

The area of Enterprise PeopleTools technology contains over 40 tools, utilities, and technologies. This document provides brief introductions of each tool or technology, and presents two frameworks with which you can gain a better understanding of the delivered technology, how to categorize the tools, and when to use particular tools.

Enterprise PeopleTools Categories

This framework divides the PeopleTools technologies, tools, and utilities into these categories:

- Development Tools.
- Administration Tools.
- Analytic Tools.
- Integration Tools.
- Lifecycle Management Tools.

Implementation Phases

This framework provides a sample set of implementation phases and lists the tools and technologies that are likely to be used or implemented within a particular phase. The implementation phases are:

- Installation.
- Application Configuration.
- System Configuration.
- Decision Support Configuration.
- Business Process Integration.
- Maintenance.

Note: The implementation phases in this framework are intended to help you gain a better understanding of Enterprise PeopleTools. The implementation phases in no way imply strict dependencies between phases or tools. Every implementation is unique.

Other Sources of Information

This section provides information to consider before you begin to use Enterprise PeopleTools. In addition to implementation considerations presented in this section, take advantage of all PeopleSoft sources of information, including the installation guides, release notes, PeopleBooks, and training courses.

Related Links

[Understanding Development Tools](#)

[Understanding Administration Tools](#)

[Understanding Analytic Tools](#)

[Understanding Integration Tools](#)

[Understanding Lifecycle Management Tools](#)

[Understanding the Phases of Implementation](#)

Enterprise PeopleTools Implementation

Implementing Enterprise PeopleTools requires the installation of the PeopleTools software within a supported environment as described in the Enterprise PeopleTools Installation documentation. An installation guide is provided for each supported database platform. Each PeopleSoft application also provides supplemental installation instructions specific to that application.

Chapter 2

Development Tools

Development Tools

This section provides overview information and discusses:

- PeopleSoft Application Designer.
 - PeopleCode.
 - PeopleSoft Application Engine.
 - Global Technology.
 - PeopleTools Internet Technology.
 - PeopleSoft Documents Technology.
 - PeopleSoft Search Technology.
-

Understanding Development Tools

The development tools that Enterprise PeopleTools provides offer a powerful application development environment in which you can build and customize PeopleSoft applications to suit your specific enterprise needs quickly, easily, and comprehensively. By using Enterprise PeopleTools development tools you can complete a variety of tasks including:

- Design and define application objects.
 - Enable applications to serve different locations and languages while sharing the same data.
 - Define end-to-end processes in a user-friendly, graphical design environment.
-

PeopleSoft Application Designer

PeopleSoft Application Designer is a metadata driven, interactive development environment (IDE) used to customize PeopleSoft applications.

Every PeopleSoft application contains a collection of related definitions, such as fields, records, pages, and components (groups of pages) that work together to provide the functionality of PeopleSoft applications. Developing and adapting PeopleSoft applications is a step-by-step process in which you configure and build the definitions, establish relationships among definitions, implement security, register your PeopleSoft application to the PeopleTools portal environment, and test every aspect thoroughly.

To perform the majority of these development activities, you use one interactive tool, PeopleSoft Application Designer, in an integrated development environment that enables you to work with all the definitions of a business application in a single work area.

PeopleSoft Application Designer enables you to perform numerous development tasks including:

- Create and modify field and record definitions.
- Build and run SQL scripts that create and alter tables and indexes.
- Create and debug PeopleCode.
- Create and modify pages for the user interface.
- Create and modify components (groups of pages).
- Work with style sheets to customize the appearance of applications.
- Upgrade your existing applications to newer PeopleSoft versions.

Related Links

PeopleTools 8.53: PeopleSoft Application Designer Developer's Guide

PeopleCode

PeopleCode is the PeopleSoft proprietary integrated programming language that touches virtually every aspect of PeopleSoft applications. PeopleCode is a powerful programming language, enabling you to include object-oriented business logic to your application as well as support modify interface display based on application context. For example, with PeopleCode you can:

- Control presentation of information to the user.
- Implement complex business logic that cannot be defined with metadata.
- Validate user inputs.
- Perform calculations and data manipulation.
- Maintain data integrity.
- Update database tables.
- Manage portal navigation.
- Integrate with other PeopleSoft applications.
- Integrate with third-party applications.
- Manage workflow.
- Administer security.

PeopleCode enables you to create programs using structured and object-oriented techniques. PeopleSoft delivers numerous PeopleCode functions, classes, methods, and APIs.

Related Links

PeopleTools 8.53: PeopleCode Developer's Guide

PeopleTools 8.53: PeopleCode Language Reference

PeopleTools 8.53: PeopleCode API Reference

PeopleSoft Application Engine

PeopleSoft Application Engine enables you to develop, test, and run Application Engine programs, which are batch or online programs that perform high-volume, background processing against your data. Application Engine programs can be compared to COBOL programs, except the Application Engine program definition is stored in the database itself, making upgrades and updates more efficient.

In PeopleSoft Application Engine, a program is a set of SQL statements, PeopleCode, and program control actions that enable looping and conditional logic. Common batch programming needs, like parallel processing and restartability, are built into PeopleSoft Application Engine programs.

You define PeopleSoft Application Engine programs in PeopleSoft Application Designer.

Related Links

PeopleTools 8.53: Application Engine

Global Technology

PeopleSoft applications are built on a robust framework enabling you to deploy your applications across the globe, regardless of language. Enterprise PeopleTools is designed so that a single implementation can serve users in different regions. Users can share the same data while operating in different languages and applying different date, time, and numeric formatting conventions.

PeopleSoft's global technology provides the core global abilities that are common to all PeopleSoft application products enabling you to:

- Operate in your own language.
- Apply different numeric formatting.
- Use any currency and market rate.
- Support multiple languages in a single database.
- Display formatted data using standards that users expect based on their language and country.
- Deploy systems spanning multiple time zones.

Related Links

"PeopleTools Global Technology Overview (*PeopleTools 8.53: Global Technology*)"

PeopleTools Internet Technology

The PeopleTools portal technologies are a multiplicity of internet-specific tools that enable you to create and manage your PeopleSoft applications and their components in the portal environment.

PeopleSoft Pure Internet Architecture enables internet application deployment through a browser, and enables you to take advantage of PeopleSoft intranet solutions, and integration technologies. PeopleSoft Pure Internet Architecture runs seamlessly in portals created and managed by PeopleSoft portal technologies.

The foundation of PeopleTools portal technology is the PeopleSoft Pure Internet Architecture, which provides you with the ability to access and administer a broad range of content providers, such as PeopleSoft applications like CRM and HCM, as well as non-PeopleSoft content. It enables you to combine content from a variety of sources and deliver that content to your application in an elegant, unified, intuitive, user-friendly interface.

Related Links

"Portal Technology Overview (*PeopleTools 8.53: Portal Technology*)"

PeopleSoft Documents Technology

PeopleSoft documents technology includes a Document Builder, a PeopleCode API, and several utilities that enable you to create, manage, and test documents.

The Document Builder enables you to build XML documents from the ground up, by importing schema definitions, or from PeopleSoft table definitions. A PeopleCode API is provided to enable you to populate and retrieve document data. PeopleSoft delivers a number of document utilities to help you validate documents during and after construction, validate schema, resolve copy project, import, and upgrade metadata issues, and more.

Extensible Markup Language (XML) is the default physical representation of PeopleSoft documents.

Documents are used to simplify integrations with third-party integration partners, as an alternative to using stand-alone rowsets, as a mechanism to distribute complex data.

Related Links

"PeopleSoft Documents Technology Overview (*PeopleTools 8.53: PeopleSoft Documents Technology*)"

PeopleSoft Search Technology

PeopleSoft Search Technology consists of these features:

- PeopleSoft Search Framework
- PeopleSoft Search

Related Links

PeopleTools 8.53: PeopleSoft Search Technology

PeopleSoft Search Framework

The PeopleSoft Search Framework enables application developers and implementation teams, to create search artifacts in a declarative manner, using PeopleSoft Query and Connected Query and to deploy and maintain searchable objects, using one standard interface, regardless of PeopleSoft application. The PeopleSoft Search Framework consists of PeopleSoft components (pages and records provided by PeopleTools), which provide a centralized interface for configuring PeopleSoft integration with the search engine, creating search definitions, search categories, and building and maintaining search indexes.

Note: The PeopleSoft Search Framework relies on Oracle Secure Enterprise Search (SES) for *all* search engine tasks.

PeopleSoft Search

Once the PeopleSoft Search Framework is configured, you can enable these PeopleSoft Search features for your end users:

- Global Search.
- Search Pages.

These end user search options enable users off the system to execute searches on application data similar to running a Google search on the internet. Users access the pages for viewing and updating application data by clicking on search results rather than needing to remember navigation to various pages in a business process.

With Global Search enabled, a Global Search Bar displays in the header of the PeopleSoft application. The Global Search bar provides a drop-down list for selecting a specific search category against which to run a search. The results enable the end user to navigate to the appropriate record or transaction simply by clicking a link.

If you've enabled the Search Pages features, a Keyword Search tab appears amongst the search pages the end user encounters when navigating into a component. The Keyword Search page enables users to execute a deeper, more free-form search to access application data than the traditional "Find an Existing Value" tab. The traditional "Find an Existing Value" tab is limited to level 0 data (high-level keys), where the Keyword Search tab lets the users enter custom keywords and the system will search indexed data from level 0-3, regardless of strict key assignments.

Chapter 3

Administration Tools

Administration Tools

This topic provides overview information and discusses:

- PeopleTools Security.
- PeopleSoft Performance Monitor.
- PeopleSoft Diagnostic Framework.
- PeopleSoft Data Mover.
- Data Integrity Tools.
- PeopleTools Utilities.
- PeopleSoft Configuration Manager.
- Additional administration utilities.

Understanding Administration Tools

With Information Technology infrastructure becoming more complex, Enterprise PeopleTools offers the state-of-the-art tools to make maintenance easy and cost-effective. The Enterprise PeopleTools administration tools enable system administrators to manage the applications you have deployed within your organization. The administration tools enable you to perform numerous system management tasks, such as configure security, monitor performance, troubleshoot, and configure servers. Most of the tasks can be completed using the same browser interface used for completing business transactions in PeopleSoft applications.

PeopleTools Security

The PeopleSoft security approach is tailored for the internet. As you implement PeopleSoft, you need a robust and scalable means by which you can grant authorization to users efficiently. When you deploy your applications to the internet, the number of potential users of your system increases exponentially. Suddenly, you have customers, vendors, suppliers, employees, and prospects all using the same system.

Just as PeopleTools provides the foundation for PeopleSoft applications, PeopleTools security provides the foundation for PeopleSoft security and for managing the user life cycle within the application.

You can apply security to all users, including employees, managers, customers, contractors, and suppliers. You group your users according to roles to give them different degrees of access. For instance, there

might be an Employee role, a Manager role, and an Administrator role. PeopleTools security enables you to manage the role-based system, including directory group import capabilities, to leverage your Lightweight Directory Access Protocol (LDAP) directory facilities.

Users who belong to a particular role require a specific set of permissions, or authorizations, within your system so that they can complete their daily tasks. Because of the increase in users due to the internet deployment, PeopleTools security enables you to perform numerous maintenance tasks programmatically, which enables your system administrators to focus on other tasks. PeopleTools security also delivers robust encryption methods to provide additional custom data protection.

PeopleTools security also provides the capability for easily integrating enterprise user management and access applications like Oracle Access Manager and Oracle Identity Manager.

Additionally PeopleTools security implements the WS-Security framework to protect web services-based integrations.

Related Links

PeopleTools 8.53: Security Administration

PeopleSoft Performance Monitor

PeopleSoft Performance Monitor is a built-in diagnostic utility that enables system administrators to monitor performance of the main elements of your PeopleSoft system, such as web servers, application servers, and PeopleSoft Process Scheduler servers. You can monitor real-time performance as well as analyze historical data.

PeopleSoft Performance Monitor reports:

- Durations and key metrics of PeopleTools runtime execution, such as SQL statements and PeopleCode events.
- Key resource metrics, such as host CPU utilization and web server execution threads.

The metrics provided by PeopleSoft Performance Monitor enable system administrators to:

- Monitor real-time system performance.
- Identify poorly performing tiers, hosts, domains, servers, application code, and SQL in a PeopleSoft environment.
- Identify performance trends.
- Address and isolate performance bottlenecks.

Related Links

"Performance Monitor Overview (*PeopleTools 8.53: Performance Monitor*)"

PeopleSoft Diagnostic Framework

The PeopleSoft Diagnostic Framework is designed to facilitate the diagnosis and resolutions of incidents by Oracle Global Customer Support. It enables the critical system data to be packaged and sent to PeopleSoft Global Support Center without the need for IT intervention. This reduces administration overhead and can help PeopleSoft solve customer issues more quickly.

The diagnostic framework retrieves diagnostic information from a PeopleSoft database enabling you to:

- Discover problematic application-related data.
- Explore setup details.
- Present information to PeopleSoft support in a common format.

Related Links

"Understanding Diagnostics Framework (*PeopleTools 8.53: Data Management*)"

PeopleSoft Data Mover

PeopleSoft Data Mover enables the database administrator or system programmer to perform a number of functions, including:

- Transfer application data between PeopleSoft databases.
- Move PeopleSoft databases across operating systems and database platforms.
- Execute Structured Query Language (SQL) statements against any PeopleSoft database, regardless of the underlying operating system or database platform.
- Create, edit, and run scripts.

PeopleSoft Data Mover provides a development interface that enables you to create scripts using specific commands. You can run scripts from the development environment or from a command line. You use PeopleSoft Data Mover during the PeopleSoft installation, but it is also used for a variety of maintenance tasks.

Related Links

"Understanding PeopleSoft Data Mover (*PeopleTools 8.53: Data Management*)"

PeopleSoft Data Archive Manager

In any enterprise application, the ability to purge and archive transactional data is critical to data management. You need to have consistent methods to archive transactional data before your database increases to unmanageable sizes. PeopleSoft Data Archive Manager provides an integrated and consistent framework for archiving data from PeopleSoft applications. Using a predefined template, you can select

any queries and multiple objects that meet your archiving and restoration requirements. Leveraging the Archive Query in PeopleSoft Query, you can easily define and customize your archive template.

Related Links

"Understanding PeopleSoft Data Archive Manager (*PeopleTools 8.53: Data Management*)"

Data Integrity Tools

PeopleSoft provides several tools to ensure the integrity of the data that is stored in the PeopleSoft system. Typically, you use these tools during installations, upgrades, and system configuration to verify the PeopleSoft system and compare it to the underlying SQL objects to ensure synchronization. Data Integrity tools include:

SYSAUDIT

The System Audit (SYSAUDIT) identifies orphaned PeopleSoft objects and other inconsistencies within the system. An example of an orphaned object is a module of PeopleCode that exists, but which does not relate to any other objects in the system.

DDDAUDIT

The Database Audit Report (DDDAUDIT) finds inconsistencies between PeopleTools record and index definitions and the database objects. This audit focuses on tables, views, and indexes.

SQL Alter

The PeopleSoft Application Designer SQL Alter function brings SQL tables into accordance with PeopleTools record definitions.

Related Links

"Understanding Data Integrity Tools (*PeopleTools 8.53: Data Management*)"

"Using Audit Utilities (*PeopleTools 8.53: System and Server Administration*)"

PeopleTools Utilities

As you work with the PeopleSoft system, you find that there are some administrative tasks that you only need to perform occasionally. The PeopleTools Utilities provide a set of tools for accomplishing some of these more infrequent tasks. Although use of these utilities may be infrequent, they provide an easy means to manage important aspects of your PeopleSoft environment. Examples of tasks that require the use of the PeopleTools Utilities are:

- Setting your base language.
- Specifying a specific style sheet.
- Setting PeopleBook Help locations.
- Editing messages in the message catalog.
- Entering values in the URL catalog.

- Setting PeopleCode and SQL trace options.

Related Links

"Understanding the PeopleTools Utilities (*PeopleTools 8.53: System and Server Administration*)"

PeopleSoft Configuration Manager

PeopleSoft Configuration Manager simplifies Windows workstation administration by enabling you to adjust PeopleSoft registry settings from one central location. The Configuration Manager applies only to workstations being used by developers and system administrators who need access to the development environment. For example, developers who need to access PeopleSoft Application Designer to view and modify pages, records, components and so on need the appropriate options set in the PeopleSoft Configuration Manager.

PeopleSoft Configuration Manager contains a variety of controls that let you set up workstations for connecting to the database, connecting to application servers, or setting trace options. You can set up one development workstation to reflect the environment at your site, and then export the configuration file, which can be shared among all the development workstations at your site.

Related Links

"Understanding PeopleSoft Configuration Manager (*PeopleTools 8.53: System and Server Administration*)"

Additional Administration Utilities

With Enterprise PeopleTools, you can also take advantage of:

- Oracle Enterprise Manager.
- Oracle Configuration Manager.

Oracle Enterprise Manager

Oracle Enterprise Manager provides a comprehensive, integrated management solution that helps you achieve high levels of performance and availability, and reduce the costs of managing applications. Oracle Enterprise Manager monitors the health of all application components, the hosts that they run on, and the key business processes that they support. Oracle Enterprise Manager's diagnostic tools help to identify system issues for you to address. In addition to monitoring and diagnostics, Oracle Enterprise Manager also manages the configuration of application environments through its integrated configuration management tool. This tool provides the ability to configure application environments properly by keeping an inventory of application and infrastructure components, tracking the changes that are made, and validating the changes to make sure that they are correct. Oracle Enterprise Manager provides the tools that help organizations achieve the required application performance and availability, improve management productivity, better utilize resources, and drive down costs.

To integrate the Oracle Enterprise Manager with your PeopleSoft implementation, you can install the PeopleSoft Enterprise Environment Management Plug-in for Oracle Enterprise Manager (licensed separately from PeopleTools).

For more information download this document from Oracle: *PeopleSoft Enterprise Environment Management Plug-in for Oracle Enterprise Manager Implementation Guide*.

Oracle Configuration Manager

Oracle Configuration Manager is used to collect configuration information from your environment and store that information at Oracle to provide you proactive resolutions to issues affecting your specific environment. During your PeopleTools installation, you have the option of installing Oracle Configuration Manager along with PeopleTools. Oracle Configuration Manager, working in conjunction with Software Configuration Manager (SCM), enables Oracle to deliver:

- Faster time to problem resolution.
- Service Request (SR) management and tracking for your configurations.
- Security patch advice and health checks specific to your configurations.
- Knowledge content tailored for your configurations.

Note: There is *no* relationship between PeopleSoft Configuration Manager and Oracle Configuration Manager. PeopleSoft Configuration Manager is used only for configuring development workstations.

Chapter 4

Analytic Tools

Analytic Tools

This topic contains overview information and discusses:

- PeopleSoft Query.
- PeopleSoft Analytic Calculation Engine.
- PeopleSoft Cube Builder.
- BI Publisher for PeopleSoft.
- PS/nVision.
- Crystal Reports for PeopleSoft.
- SQR for PeopleSoft.
- PeopleSoft Tree Manager.
- PeopleSoft Process Scheduler.

Understanding Analytic Tools

The PeopleSoft analytic tool solutions span the wide-ranging information access needs of your organization, from end-user querying and exploration, to multidimensional reporting and analysis, to production reporting.

These include the standard reports we deliver, as well as the reporting tools you can use to customize reports or create new ones. Enterprise PeopleTools reporting and decision support capabilities enable you to perform numerous tasks, such as create queries, create reports, and create online analytical processing (OLAP) cubes.

Your database contains a wealth of information that you've carefully entered, maintained, and secured for the ultimate purpose of generating timely, meaningful, presentation-quality reports as well as provide online analytical options. Our reporting and decision support capabilities enable you to access the data you need and present it in the form that is most useful for the decision makers in your organization.

PeopleSoft Query

PeopleSoft Query provides a user friendly, intuitive way to generate ad-hoc and scheduled reports quickly from any data stored in your PeopleSoft tables. Users can design and run queries using any supported web

browser. Designers of queries do not need to write or be familiar with Standard Query Language (SQL). In addition, users who are less technically savvy can run predefined queries. Queries can be as simple or as complex as necessary. You can run queries from a web browser and then download the data as a Microsoft Excel spreadsheet

Related Links

"PeopleSoft Query Overview (*PeopleTools 8.53: PeopleSoft Query*)"

PeopleSoft Analytic Calculation Engine

PeopleSoft Analytic Calculation Engine combines a calculation engine plus several Enterprise PeopleTools features that enable application developers to define both the calculation rules and the display of calculated data within PeopleSoft applications. The calculated data is used for the purposes of multidimensional reporting, data editing, and analysis.

Application developers create *analytic models* which define the rules used to calculate data. To display the data to end users, application developers create PeopleSoft pages that include a specific type of grid—an analytic grid.

End users can view, analyze, and even make changes to analytic model data. When end users save any changes made to the analytic model, PeopleSoft Analytic Calculation Engine recalculates the data and sends the calculated data to the application database.

Related Links

"Understanding Analytic Calculation Engine (*PeopleTools 8.53: Analytic Calculation Engine*)"

PeopleSoft Cube Builder

PeopleSoft Cube Builder provides a framework for modeling your OLAP cubes through its design tools. This framework enables you to manage dimensions, attributes, measures, and cubes that you might want to build from PeopleSoft sources. All of these definitions can be shared across cubes to ensure that OLAP results are consistent across your enterprise.

What you design in PeopleSoft Cube Builder can be used across all target OLAP platforms supported by PeopleSoft. The majority of a cube's design attributes can be applied to Hyperion Essbase. PeopleSoft Cube Builder also enables you to leverage your existing PeopleSoft metadata to define the cube structure.

Related Links

"PeopleSoft Cube Builder Overview (*PeopleTools 8.53: PeopleSoft Cube Builder*)"

PS/nVision

PS/nVision is a sophisticated tool for creating business reports in Microsoft Excel. Working within Microsoft Excel, you create a report layout that defines both the data to retrieve and the format of the report. Using PS/nVision, you can create report layouts that summarize information from your PeopleSoft

database and use the drill down feature to expose the supporting details. You can share report layouts across multiple business units and time periods, creating reports that "roll" from unit to unit or period to period without changing the data-retrieval criteria.

PS/nVision works within spreadsheets. You access PS/nVision features from a special PS/nVision menu within Microsoft Excel to create templates (layouts) for data retrieval. Once you create a report layout (XNV file), you can use it to automatically format data. PS/nVision selects data from your PeopleSoft database using ledgers, trees, and queries.

PS/nVision enables you to extend the rich querying features that PeopleSoft Query offers. For example:

- With PeopleSoft Query you can generate tabular reports without formatting, and with PS/nVision you can deliver well formatted, easy-to-read reports.
- PS/nVision enables you to produce matrix reports in which you can use multiple ledgers or queries to define the reports.
- PS/nVision provides dynamic features, such as bursting and nPlosion, unavailable in static query results.
- PS/nVision offers built-in logic to detect detailed ledger metadata in multiple financial environments.

Related Links

"PS/nVision Overview (*PeopleTools 8.53: PS/nVision*)"

BI Publisher for PeopleSoft

Oracle provides a standalone Java-based reporting technology named BI Publisher (BIP) that streamlines report and form generation. Enterprise PeopleTools is leveraging this technology with BI Publisher for PeopleSoft Enterprise, which provides native BIP technology for PeopleSoft Query as well as any PeopleSoft application.

BIP separates the data extraction process from the report layout. BIP provides the ability to design and create report layout templates with the more common desktop applications of Microsoft Word and Adobe Acrobat, and renders XML data based on those templates. With a single template, you can generate reports in many formats (PDF, RTF, Excel, HTML, and so on) and in many languages.

BI Publisher for PeopleSoft provides an environment for the power business user to manage templates, data sources, reports, translations, content components, and to produce reports according to a user-defined criteria. BI Publisher for PeopleSoft also can burst reports, such as annual wage statements for employees, electronically.

Related Links

"BI Publisher Overview (*PeopleTools 8.53: BI Publisher for PeopleSoft*)"

Crystal Reports for PeopleSoft

Crystal Reports enable you to generate clear and easy-to-read reports presenting data from your PeopleSoft applications. You can generate standard reports already created and saved in Crystal, or you can create your own custom reports.

Generating formatted output in Crystal involves two steps. First you create and save queries in PeopleSoft Query, and then you create report definitions in Crystal to format the fields (columns) used in the queries. You can generate reports in a variety of different formats, including text files, Microsoft Word documents, and spreadsheets.

Related Links

"Crystal Reports for PeopleSoft Overview (*PeopleTools 8.53: Crystal Reports for PeopleSoft*)"

SQR for PeopleSoft

SQR for PeopleSoft is a powerful enterprise reporting system that provides direct access to multiple data sources. The SQR for PeopleSoft tools make it possible to create clear, professional reports from complex arrays of information systems.

SQR is a specialized programming language for accessing, manipulating, and reporting enterprise data. With SQR, you build complex procedures that perform multiple calls to multiple data sources and implement nested, hierarchical, or object-oriented program logic.

The high-level programming capabilities that SQR provides enable you to add procedural logic and control to data source calls. You can use SQR to write other types of applications, such as those for database manipulation and maintenance, table loading and unloading, and interactive querying and displaying.

Related Links

"SQR for PeopleSoft Overview (*PeopleTools 8.53: SQR for PeopleSoft Developers*)"

"The SQR Language (*PeopleTools 8.53: SQR Language Reference for PeopleSoft*)"

PeopleSoft Tree Manager

The PeopleSoft Tree Manager enables you to arrange data into a hierarchal format that can then be used in other areas, such as report generators, OLAP, chartfield field combination editing in PeopleCode, and security. Casual users have a familiar and easy-to-understand interface, as well as all of the functionality required for creating and maintaining trees.

PeopleSoft Tree Manager enables you to:

- Present summarization rules visually.
- Give the system a single place to look for summarization rules.

- Provide simpler selection and updating of values in reports, ledgers, or security profiles.

Related Links

"PeopleSoft Tree Manager Overview (*PeopleTools 8.53: PeopleSoft Tree Manager*)"

PeopleSoft Process Scheduler

PeopleSoft Process Scheduler enables you to schedule and manage the execution of PeopleSoft batch processes. With PeopleSoft Process Scheduler you can:

- Schedule recurring processes to run on any date or time interval that your business requires, such as monthly, daily, hourly, or by the minute.
- Create jobs (groups of processes) that run several processes and conditionally schedule successive processes based on the status of a previous process in the job.

The primary role of Process Scheduler is to support the PeopleSoft application environment. With a PeopleSoft application, you might want to run certain processes (batch programs, reports, and so on) behind the scenes of the online system. Running reports, posting journal entries, loading benefit enrollment forms, and calculating payroll deductions are all examples of processes that you might want to perform offline.

Using PeopleSoft Process Scheduler can streamline your business practices by enabling you to take advantage of the distributed computing environment at your site, whereby you can schedule performance-sensitive jobs to run on a powerful server while the online system is still available to end users.

Note: While the PeopleSoft Process Scheduler runs all types of online and offline programs, it's primarily used to support your reporting environment.

Related Links

"PeopleSoft Process Scheduler Overview (*PeopleTools 8.53: PeopleSoft Process Scheduler*)"

Reporting Web Services

Reporting Web Services are services published through the Integration Broker that can be consumed by third-party applications to facilitate creating and running reports on the PeopleSoft system. Web Services are available for Query Access and Process Scheduler. Each web service contains multiple service operations to perform specific tasks relating to reporting.

Related Links

"Query Access Service Operations (*PeopleTools 8.53: Reporting Web Services*)"

Chapter 5

Integration Tools

Integration Tools

This topic provides overview information and discusses:

- PeopleSoft Integration Broker.
- Feed Publishing Framework.
- PeopleSoft Component Interfaces.
- File Interfaces.
- Supported Integration Tools.
- Integration testing tools.
- Enterprise integration utilities.
- Workflow Technology.
- MultiChannel Framework.

Understanding Integration Tools

IT departments continue to be challenged by:

- Multiple types of disparate systems.
- Lack of communication standards.
- Islands of automation (business applications) operating in a standalone fashion.

These conditions can lead to:

- Duplicate data entry.
- Unavailable or inaccurate information.
- Inefficient operations.

The Enterprise PeopleTools integration tools enable you to share information seamlessly with other PeopleSoft applications, third party ERP vendors, legacy applications, and your business partners.

PeopleSoft Integration Broker

PeopleSoft Integration Broker provides service oriented architecture (SOA) technology that facilitates the transmission of synchronous and asynchronous service operations. Use the PeopleSoft Integration Broker to:

- Perform asynchronous and synchronous messaging among internal systems and third-party systems.
- Expose PeopleSoft business logic as web services to PeopleSoft and third-party systems.
- Consume and invoke web services from third-party and PeopleSoft systems.

The two major components of PeopleSoft Integration Broker are the integration gateway and the integration engine. The integration gateway is a platform that manages the receipt and delivery of service operations passed among systems through PeopleSoft Integration Broker. The integration engine is an application server process that routes service operations to and from PeopleSoft applications as well as transforms the structure of service operations and translates data according to specifications that you define.

PeopleSoft Integration Broker offers the following benefits:

- PeopleSoft Integration Broker is provided with PeopleTools so you don't need to purchase additional, third party integration tools.
- Consistent infrastructure using PeopleSoft Application Servers and web servers.
- Ability to reuse development staff skills.
- "Out-of-the-box" integration to all PeopleSoft applications.
- Supports all major integration methods, such as web services.

Related Links

"Introduction to PeopleSoft Integration Broker (*PeopleTools 8.53: PeopleSoft Integration Broker*)"

Feed Publishing Framework

The Feed Publishing Framework provides user interfaces and APIs for feed definition creation and maintenance, feed searching and subscription, as well as feed document generation and delivery.

A web feed, news feed, or feed is a data format that provides users with access to frequently updated content. A feed contains entries, which might be headlines, full-text articles, excerpts, summaries, digital media, and links to content on a web site, along with various metadata. PeopleSoft applications, news organizations, external web sites, and other content distributors publish or syndicate web feeds, which enables users to subscribe to them.

The Feed Publishing Framework provides:

- A set of APIs and code samples to assist application developers in creating new type of feeds and integrating them with existing features

- Unified interfaces for content owners and administrative users to create, configure, and maintain feed definitions of various types.
- Interfaces for end users to discover related feeds and search feed definitions.

Related Links

"Feed Publishing Framework Overview (*PeopleTools 8.53: Feed Publishing Framework*)"

PeopleSoft Component Interfaces

Component interfaces provide a way to access the PeopleSoft database without using a graphical user interface. A component interface encapsulates a PeopleSoft component, which is a logical grouping of PeopleSoft pages representing a complete business transaction. You create component interfaces using PeopleSoft Application Designer.

A PeopleSoft component provides all of the business rules, through PeopleCode and edits, for interacting with the PeopleSoft database. Components are based on pages and are presented to the user to view and update with a browser. The component interface takes this same functionality and exposes it to third-party systems without using a graphical user interface.

Component interfaces:

- Enforce all of the business rules defined on the component.
- Provide synchronous access to the PeopleSoft database.
- Provide access to PeopleSoft components through APIs.

Component interfaces expose the rich functionality delivered in the hundreds of components within PeopleSoft products. A component is an atomic transaction that implements a business process or function. A component interface provides real-time synchronous access to the PeopleSoft business rules and data associated with a business component.

The interface is exposed via standard access methods: Java, C/C++, COM, SOA, and CORBA (through partnership). Component interfaces encapsulate PeopleSoft data and business processes, and they hide the details of the structure and implementation of the underlying page and data. The actual interface consists of a set of clearly defined properties and methods that follow an object-oriented programming model. External applications can access component data only by using the properties or methods specified in the component interface.

Related Links

"Understanding Component Interfaces (*PeopleTools 8.53: PeopleSoft Component Interfaces*)"

File Interfaces

File-based integrations provide the ability to exchange files with third-party systems or legacy systems that do not support messaging. Files are exchanged using file layouts or PeopleSoft Application Engine

programs. File layouts are used to graphically define where data is located in a file. The file definition layout is then accessible to the PeopleSoft Application Engine program to import or export the file.

The File class provides methods and properties for reading from and writing to external files. Most application interfaces to files require complex parsing of file data. Files that allow for this kind of complexity in a PeopleSoft application are based on a File interface.

A File Interface is a definition (or mapping) of a file to be processed. It identifies where data fields are located in the file. This powerful interface enables application developers to access data from a file as they would a message or a page buffer (scroll). There is no need to parse each file record into fields.

File interfaces are unique to a specific format and may only process that particular type of formatted file. The definition created in Application Designer retains a consistent look and feel regardless of format.

File layouts support the following file types:

- Fixed format sequential files.
- Comma delimited files.
- XML files.

Related Links

"Understanding File Layouts (*PeopleTools 8.53: PeopleSoft Application Designer Developer's Guide*)"

Supported Integration Tools

PeopleSoft supports these additional integration utilities:

- EDI Manager.
- Outgoing Forms API.
- Open Query ODBC Driver and API.

Electronic Data Interchange (EDI) is a standard means of exchanging data between companies so they can transact business electronically. For example, using EDI a company can submit an order to a vendor, and the vendor can acknowledge and fulfill the order without any paper changing hands or any contact between company representatives.

With PeopleSoft Application Designer, you can implement routings, which transfer data from one step in a business process to another. One type of routings is a forms routing. With a forms routing, the system takes data from a PeopleSoft page the user is working on, enters it onto a third-party form, and mails the completed form to designated users by means of the forms product's mail capabilities.

The PeopleSoft Open Query ODBC driver and API allow third-party reporting tools or applications to access PeopleSoft data in conformance with the PeopleSoft Query access architecture (the embedded SQL access intelligence provided by PeopleSoft Query).

Integration Testing Tools

PeopleSoft provides these tools for testing your integration development:

- Send Master Utility.
- Simple Post Utility.
- Automated integration point testing.
- Transformation Test Utility.
- Handler Tester.
- Schema Tester.

Related Links

"PeopleSoft Integration Testing Utilities and Tools Overview (*PeopleTools 8.53: Integration Broker Testing Utilities and Tools*)"

Send Master Utility

The Send Master utility enables you to test PeopleSoft Integration Broker messaging interactions with PeopleSoft and third-party web servers, application servers, and integration gateways. It can test listening connector functionality, target connector functionality, connector introspection and transactions. Send Master enables you to post any data format, including the PeopleSoft Multipurpose Internet Mail Extensions (MIME) message format, to web and application servers over HTTP and HTTPS. You can also use Send Master to simultaneously test groups of different types of messages, as well as stress test your system.

Related Links

"Understanding Send Master (*PeopleTools 8.53: Integration Broker Testing Utilities and Tools*)"

Simple Post Utility

The Simple Post utility enables you to use shell scripts or a Java API to post XML messages from third-party systems to the integration gateway. The utility wraps the incoming messages in the PeopleSoft XML wrapper format and posts them to the HTTP listening connector. The Simple Post utility reads ASCII, UTF-8 and UTF-16 file formats for incoming messages and converts them to UTF-8 to send to the integration gateway.

Related Links

"Understanding the Simple Post Utility (*PeopleTools 8.53: Integration Broker Testing Utilities and Tools*)"

Automated Integration Point Testing

PeopleSoft provides a means for automated integration point testing. You can perform automated integration point testing as a means to unit test, perform cross-application business process testing, or

regression test integration points. Automated integration point testing is suitable for testing integration points between PeopleSoft systems, PeopleSoft systems and third-party systems, and PeopleSoft systems and open interfaces. You can use automated integration point testing with the following PeopleSoft integration technologies:

- Messaging, including asynchronous and synchronous publishing and subscribing.
- Component interfaces.
- Flat files.
- Staging tables.

Related Links

"Understanding Automated Integration Point Testing (*PeopleTools 8.53: Integration Broker Testing Utilities and Tools*)"

Transformation Test Utility

PeopleSoft Integration Broker provides the Transformation Test utility, which you can use to test Application Engine transform programs without sending messages, and with minimal development effort.

Related Links

"Understanding the Transformation Test Utility (*PeopleTools 8.53: Integration Broker Testing Utilities and Tools*)"

Handler Tester

The Handler Tester allows you to test handlers defined for rowset-based and nonrowset-based service operations from within the PeopleSoft Pure Internet Architecture. You can test handlers without setting up a routing, without having pub/sub booted on your application server, and without impacting other developer activity on the system.

Related Links

"Understanding the Handler Tester Utility (*PeopleTools 8.53: Integration Broker Testing Utilities and Tools*)"

Schema Tester

The Schema Tester Utility enables you to validate rowset-based and nonrowset-based messages against message schemas during development to determine if messages adhere to defined message schemas.

Related Links

"Understanding the Schema Tester Utility (*PeopleTools 8.53: Integration Broker Testing Utilities and Tools*)"

Enterprise Integration Utilities

In addition to the integration technology provided by Enterprise PeopleTools, there is a set of utilities shipped with your PeopleSoft applications that are also a part of the PeopleSoft integration solution.

Note: The documentation for these utilities is not shipped with the Enterprise PeopleTools documentation; it is shipped with your PeopleSoft application documentation and resides in the PeopleSoft Enterprise Components for <your application> PeopleBook.

These additional utilities include:

- Publish utility.
- Error Handling utility.
- Effective Date Publish utility.
- Flat File utility.
- XML Schema utility.

Publish Utility

The Publish utility automates the process of copying the contents of an entire table into a remote database or legacy system. Use the utility to synchronize data from an existing system when a new PeopleSoft system is installed. The data is chunked based on the maximum size set for a message. You can control the size, number, and frequency of these data messages by using a series of data publishing rules and:

- Whether to create header and trailer records.
- Where the data comes from.
- Whether to chunk the message.
- Which related languages to publish.

The publishing rules include pages for full table publishing rules, batch publishing rules, record mapping, languages, and batch programs.

Error Handling Utility

The Error Handling utility is a PeopleTools application that you use to view and correct messages that are received by the subscriber. You can also use this utility to correct data that is stored in staging tables.

PeopleSoft applications that receive flat file data from other systems through batch processes have built-in facilities to validate and correct data prior to updating the main application tables. Likewise, before updating core PeopleSoft application tables, the subscription process detects data errors in the messages that it receives. These error messages are stored in either message queues or staging tables.

In some cases, however, errors can't be sent back to the third party for correction (such as when data is in a flat file). In these cases, you must provide error processing on incoming data so that messages that

contain information on business objects, such as items and vendors, can be corrected and reprocessed in the PeopleSoft system. The Error Handling utility enables you to achieve this task.

Effective Date Publish Utility

The Effective Date Publish utility enables you to design processes to update external systems that process only current data and don't use or recognize effective dating.

For example, for full data messages that are intended for vendors who do not handle effective dating, the Effective Date Publish utility enables you to publish only those rows that are currently active. Any future-dated rows are not published and written to the delay table instead.

Flat File Utility

The Flat File utility enables you to develop complementary processes to translate incoming files into messages or translate outbound messages into files. You use this utility when external systems send you flat files, when external systems only accept flat files sent to them.

The Flat File utility reads the data in an incoming flat file and copies the rowsets of the data file into a message. When the utility sends the message to the subscribers, the subscribing systems receive the message and initiate normal inbound data processing. This process works in reverse for outbound flat files.

XML Schema Utility

PeopleSoft Open Integration Framework enables near real-time messaging and transactions by using a format that is based on XML to convey information between diverse applications in a standard way. To take advantage of this standardization, you must obtain clear XML definitions (schemas) for each application message, component interface, or business interlink.

The XML Schema utility provides the following features:

- Output options for the XML Schema utility, document type definition (DTD), or BizTalk definition for all application messages.
- The ability to create an XML definition for a single object, for all of the objects, or for all of the objects by a specific owner.
- A single flat file for each XML definition that is written to your system's %TEMP directory (when you use the Microsoft Windows client) or the server's common access file directory (when you use PeopleSoft Internet Architecture).
- An application foundation for future standards of XML definitions.

Workflow Technology

Workflow enables collaboration between applications, organizations, and people. PeopleSoft Workflow enables you to:

- Automate paper-based business processes.
- Increase collaboration between employees, customers, and suppliers.

- Integrate your system according to business processes.

The main elements of PeopleSoft Workflow include:

- Business process definitions, which reflect the business process—from beginning to end.
- Activities, which are a set of logically ordered steps in a process.
- Worklists, which are the automated “to-do” lists.
- Rules, which determine the activities that are required to process your business data.
- Roles, which describe how people fit into the workflow.
- Routings, which specify where information goes and what form it takes (email message or worklist entry).

Related Links

"Understanding PeopleSoft Workflow (*PeopleTools 8.53: Workflow Technology*)"

PeopleSoft MultiChannel Framework

PeopleSoft MultiChannel Framework delivers an integrated infrastructure to support multiple interaction channels for call center agents or other PeopleSoft users who must respond to incoming requests and notifications. The PeopleSoft MultiChannel Framework can be used from any PeopleSoft application.

A “channel” refers to the technology used to communicate during an interaction. PeopleSoft MultiChannel Framework supports the following channels:

- Voice (telephone).
- Web collaboration (chat).
- Email.
- Instant messaging.

Related Links

PeopleTools 8.53: PeopleSoft MultiChannel Framework

Chapter 6

Lifecycle Management Tools

Lifecycle Management Tools

This topic provides overview information and discusses:

- Change Assistant.
- Change Impact Analyzer.
- Setup Manager.
- Application Designer.
- PeopleSoft Test Framework.

Understanding Lifecycle Management Tools

PeopleTools Lifecycle Management Tools enable you to manage your investment in your PeopleSoft application infrastructure. Lifecycle management tools help you to upgrade and update your system with the latest releases and patches using automated tools that enable you to apply only what you need as well as determine the impact to your existing version level.

Change Assistant

The Change Assistant is an administration tool designed to automate the process of installing software patches, updates, and upgrades, reducing the time required for application updates. With Change Assistant, administrators can manage changes to their PeopleSoft Enterprise applications—from the smallest patch to a major update. PeopleSoft Change Assistant uses Customer Connection to retrieve only those patches that are needed for a specific PeopleSoft environment, thereby improving administrator productivity. Change Assistant uses the Environment Management Framework to store, retrieve and distribute system configurations across PeopleSoft implementations.

PeopleSoft Change Assistant helps to assemble and organize all of the steps necessary to complete your upgrade. It runs some of the steps automatically, while others may require you to make changes manually. The Change Assistant provides the relevant documentation for the steps included in your upgrade process.

Related Links

"PeopleSoft Change Assistant Overview (*PeopleTools 8.53: Change Assistant and Update Manager*)"

Data Migration Workbench

Data Migration Workbench facilitates the Configuration Management process using *Application Data Sets* as its underlying transport technology. Application Data Sets enable developers to use a PeopleSoft Pure Internet Architecture (PIA) browser page to define data set definitions as a hierarchy of records and assign collective properties. The two main components in data sets are the Data Set Designer used to define the structure of the data set and the Data Migration Workbench, used to define the Data Migration project content and to orchestrate copy and compare. Data Migration Workbench shows the current status of a project and prevents inconsistent actions.

The Data Migration Workbench is designed to manage the complexity of migrating configuration data across numerous PeopleSoft systems. It is very common to have multiple databases (four or more) in a single PeopleSoft environment, including one or more for development, another for quality assurance, not to mention the primary production system. PeopleTools migrates managed objects between environments using PeopleSoft Application Designer projects that are extracted from one database and imported into another, which works well for PeopleTools metadata. However, projects do not handle application configuration data. The Data Migration Workbench addresses the application configuration data.

Related Links

"Data Migration Workbench Overview (*PeopleTools 8.53: Data Migration Workbench*)"

Change Impact Analyzer

Change Impact Analyzer is a tool installed separately from PeopleTools that helps you determine the impact of specific changes you plan to make to your application. It's an interactive program where you can see the relationships of PeopleSoft definitions in a hierarchical view. Change Impact Analyzer displays several views of analyses in tabular and text views. It's delivered with a set of rules that are used to determine the relationships between definitions. Rules define the impact or effect on definition(s) when another definition changes. For example, if a database field changes, it would impact the record containing that field. You can add custom rules to the rules files, if needed, to assess the impact of additional relationships.

Related Links

"Understanding Change Impact Analyzer (*PeopleTools 8.53: PeopleSoft Change Impact Analyzer*)"

Setup Manager

Setup Manager supports application configurations with a step-by-step process for identifying, managing, and executing setup tasks based either on business processes or the PeopleSoft products and features you select. Based on specific configuration templates the PeopleSoft Setup Manager actually generates a setup task list and pages you can use to manage the completion of setup tasks.

Setup Manager reduces the time and cost required to implement your PeopleSoft applications by ensuring the application setup is completed accurately and in the correct sequence, thus eliminating costly rework.

The Setup Manager also provides links to relevant integration points, which include the documentation for and online pages used for managing the data.

Related Links

"Setup Manager Overview (*PeopleTools 8.53: PeopleSoft Setup Manager*)"

Application Designer

Application Designer is the main application development tool of the Enterprise PeopleTools suite, and it also offers a rich set of lifecycle management features that you will use frequently when upgrading, applying updates provided by Oracle, or applying customizations to your production database. These features enable you to:

- Copy projects between databases.
- Compare definitions in one database to like definitions in another to assess the upgrade or update impact.
- Merge definitions from one database to another.
- Create change packages to apply updates to your system automatically using Change Assistant.

Related Links

PeopleTools 8.53: PeopleSoft Application Designer Lifecycle Management Guide

PeopleSoft Test Framework

PeopleSoft Test Framework (PTF) is a tool that automates various tasks within the PeopleSoft Enterprise application – primarily functional testing. Automating functional testing allows you to execute more tests with greater accuracy during a shorter time window.

PTF works by replicating the actions of a single user executing functional tests against a PeopleSoft browser-based application. Users can capture or “record” manual test procedures and save them within the framework. Later, perhaps after an application upgrade or patch, those tests can be executed against the application to verify whether the application still behaves as expected. This method for capturing and executing tests is often called the “record and playback” approach to automation.

Test assets (tests, test cases, logs, and execution options) are stored in a database as Application Designer objects, which means they can be compared and copied between databases.

PTF includes a number of features that many other commercially-available record-and-playback automation tools lack, including:

- The ability to validate recorded objects against PeopleSoft’s object metadata definitions. This enables the tester to assertively verify the existence of test objects before running a test rather than running the test to identify invalid object definitions by trial and error.
- Features to help manipulate data within PeopleSoft’s rowset-oriented data structure.

- Functionality to automate numerous PeopleSoft-specific functions, such as running processes through Process Scheduler.
- Built-in commands to interface with other PeopleSoft tools, such as Data Mover and PeopleSoft Query.

Related Links

"PeopleSoft Test Framework (*PeopleTools 8.53: PeopleSoft Test Framework*)"

Viewing PeopleTools Within Implementation Phases

Viewing PeopleTools Within Implementation Phases

This topic provides overview information related to using PeopleTools within a sample implementation framework.

Note: The implementation phases in this framework are intended to help you gain a better understanding of Enterprise PeopleTools regarding how and when they may be used. The implementation phases in no way imply strict dependencies between phases. Every implementation is unique.

Understanding the Phases of Implementation

Although few implementations follow exactly the phases of a system development lifecycle (SDLC) or implementation plan, the following implementation phases are provided as a framework through which you can gain an understanding of how and when specific Enterprise PeopleTools are intended to be used. This framework should be viewed as a high-level educational guide rather than a strict, implementation model.

Note: Some PeopleTools may be used in multiple phases of an implementation.

Using PeopleTools within Implementation Phases

The following table describes the implementation phases and lists the tools and technologies that are likely to be used within the particular phases.

<i>Phase</i>	<i>Description</i>	<i>Tools and Technologies Used</i>
Installation	This phase covers the activities involved in installing the PeopleSoft software and setting up your demonstration PeopleSoft environment. A demonstration environment includes application servers, Process Scheduler servers, web servers, and a PeopleSoft database.	<ul style="list-style-type: none">• Data Mover• Configuration Manager• Application Designer• PeopleTools Security• Data Integrity Tools (DDDAUDIT and SYSAUDIT)

Phase	Description	Tools and Technologies Used
Application Configuration	This phase covers the activities involved in configuring the PeopleSoft applications you have purchased to fit the business processes of your organization. This phase includes setting up security access, customizing pages, creating custom batch programs, and so on.	<ul style="list-style-type: none"> • PeopleTools Security • PeopleSoft Application Designer • Global Technology • PeopleCode • PeopleSoft Search • PeopleSoft Application Engine • PeopleSoft Setup Manager
System Configuration	This phase covers the activities involved in setting up and configuring the infrastructure that supports the deployment of your application configuration. For example, in this phase you would set up the servers, the security, and processes required to be in place for your end users to use the PeopleSoft system to complete business transactions with a browser or other device.	<ul style="list-style-type: none"> • Portal Technology (portal) • PeopleTools Security • PeopleSoft Application Server • PeopleSoft Process Scheduler • PeopleSoft Search Framework • PeopleSoft MultiChannel Framework • PeopleSoft Setup Manager • PeopleSoft Application Engine
Decision Support Configuration	This phase covers the activities involved with setting up the reporting and decision support systems that decision makers will use to gather business information. This includes developing predefined queries and reports, setting up a system to generate reports at scheduled times, set up access to OLAP cubes, and so on.	<ul style="list-style-type: none"> • PeopleSoft Process Scheduler • PeopleSoft Query • PeopleSoft Analytic Calculation Engine • PeopleSoft Tree Manager • Crystal Reports for PeopleSoft • PS/nVision • PeopleSoft Cube Builder • SQR for PeopleSoft • PeopleCode

<i>Phase</i>	<i>Description</i>	<i>Tools and Technologies Used</i>
Business Process Integration	This phase covers the activities involved in setting up systems that enable your business processes to span multiple business areas, such as HR and Finance, within your organization. This phase includes setting up our XML-driven integration technology that enables disparate systems to exchange data seamlessly, and it also includes setting up PeopleSoft Workflow to enable multiple users within a business process to easily route data and notifications to each other.	<ul style="list-style-type: none"> • PeopleSoft Integration Broker • Workflow Technology • PeopleSoft Component Interfaces • PeopleSoft Application Designer • PeopleCode • PeopleSoft Application Engine
Maintenance	This phase covers the activities that are involved in maintaining your PeopleSoft system once you have rolled out the system to your end users. This phase includes monitoring system performance, upgrading to new releases, applying patches, and so on.	<ul style="list-style-type: none"> • PeopleSoft Performance Monitor • PeopleSoft Test Framework • Diagnostic Framework • PeopleSoft Data Archive Manager • PeopleSoft Change Assistant • Data Migration Workbench. • PeopleTools Utilities • PeopleSoft Enterprise Environment Management Plug-in for Oracle Enterprise Manager

Chapter 8

PeopleSoft Internet Architecture

PeopleSoft Internet Architecture

This section provides an overview and discusses these elements of the PeopleSoft Internet Architecture:

- PeopleSoft database.
- PeopleSoft Application Server.
- Web server.
- PeopleTools Development Environment.
- Application access types.

See PeopleSoft Enterprise PeopleTools Certifications on My Oracle Support.

Understanding the PeopleSoft Topology

The PeopleSoft Internet Architecture is comprised of these main server types:

- RDBMS.
- PeopleSoft Application Server(s).
- Web server(s).

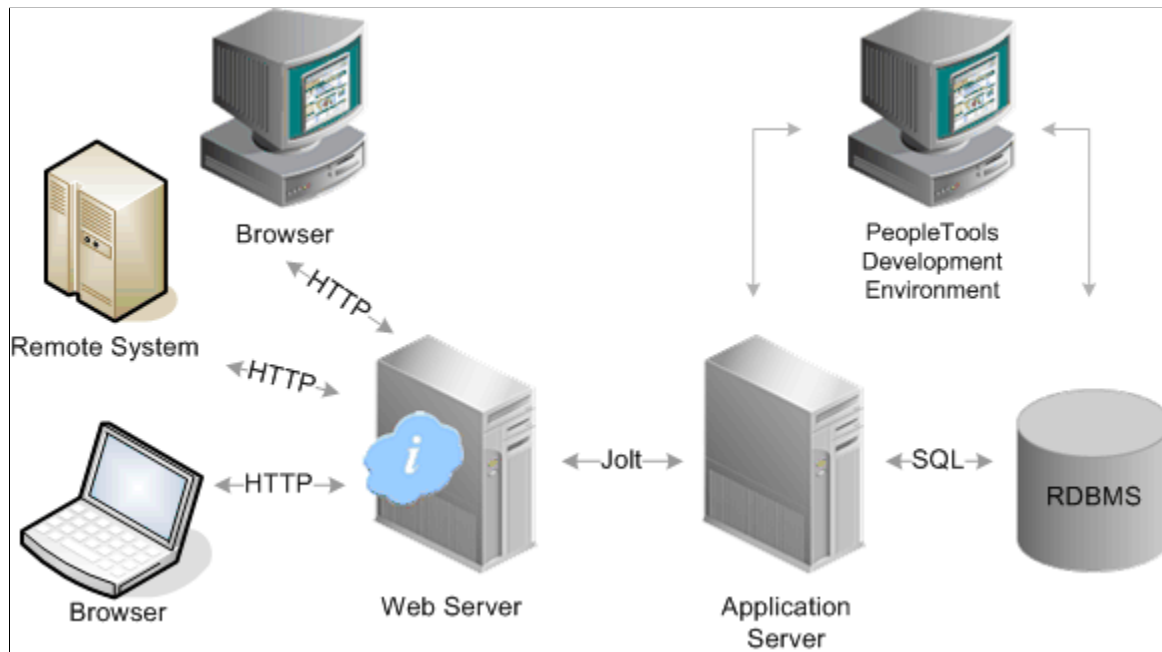
The servers facilitate connections and process requests from:

- PeopleTools Development Environment: A Windows workstation running a development tool, such as PeopleSoft Application Designer.
- Browser: A supported browser type and version displaying a PeopleSoft application or administrative interface.
- Remote system: A PeopleSoft or third-party system integrated through PeopleSoft Integration Broker's service oriented architecture (SOA).

The following diagram illustrates the relationship between the elements of the PeopleSoft Internet Architecture.

Image: Application requests are received at the web server, then sent to the application server, which submits the SQL to the RDBMS

The following image illustrates how application requests are received at the web server, then sent to application server, which finally submits the SQL to the RDBMS



PeopleSoft Database

PeopleSoft has a long history of offering customers a choice of market-leading databases. PeopleTools provides an abstraction layer, which insulates application developers from the intricacies of each of the specific database platforms. Customer databases choices include:

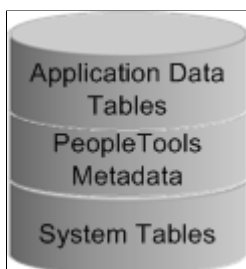
- Oracle
- IBM DB2
- Microsoft SQL Server
- Informix
- Sybase

After you install your database engine there are three distinct layers within the database that work in concert to store and manage data for your PeopleSoft system. The database system tables manage both the

PeopleTools and PeopleSoft application database objects, while the PeopleSoft application tables reside within the infrastructure defined by the PeopleTools metadata.

Image: PeopleSoft database comprised of distinct, yet integrated, layers including system tables, PeopleTools metadata, and PeopleSoft application data

The following image describes three distinct yet integrated database layers for PeopleSoft system.



The following table describes each layer of a PeopleSoft database.

<i>PeopleSoft Database Layer</i>	<i>Description</i>
System Tables	<p>System tables, also called system catalog tables, are analogous to a table of contents for a book or to file allocation tables on a hard drive. The structure and table names vary depending on which RDBMS you use. System catalog tables:</p> <ul style="list-style-type: none"> • Keep track of all of the objects that reside in the database instance. • Are created by and owned by the RDBMS. • Are often described as system metadata.
PeopleTools metadata	<p>PeopleTools tables provide the infrastructure for PeopleSoft applications by storing and managing PeopleSoft application metadata. This metadata consists of information that defines the application, such as records, fields, pages, PeopleCode, and security. PeopleTools tables:</p> <ul style="list-style-type: none"> • Define the structure of all object definitions that make up an application. • Use the same table structure for all applications. • Contain data that is added and updated only when the application is installed, or when using development tools such as PeopleSoft Application Designer or Data Mover.

PeopleSoft Database Layer	Description
PeopleSoft application data tables	<p>Application data tables store data entered through a PeopleSoft application. The specific tables and their structures vary by application. Application data tables:</p> <ul style="list-style-type: none"> • Contain transactional data entered by users. • Are empty prior to data entry (except the demo databases).

PeopleSoft Application Server

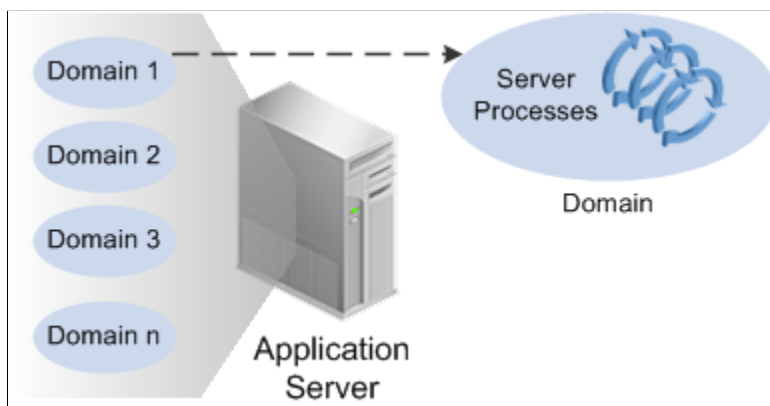
The application server handles the bulk of the workload within the PeopleSoft system. It runs the business logic and processes all application requests. The application server relies on Oracle Tuxedo middleware to process transaction requests. Oracle Jolt provides the Java interface making Oracle Tuxedo available for web-based requests.

Unique server processes run on the application server, with each server process type designed to handle specific types of transactions. For example, some server processes are designed to handle browser requests, while others are designed to handle Integration Broker requests.

Server processes are configured to boot within a domain. The number of and type of server processes that boot within a particular domain varies depending on the purpose of the domain. For example, if the domain is configured to handle application requests, primarily, it can contain only server processes designed to handle such requests. Likewise, if a domain is configured to handle Integration Broker processing, it can contain a predominant amount of the integration server processes. A domain can connect to one, and only one, database, while a database can accept connections from multiple domains.

Image: An application server can contain multiple domains with each domain containing multiple server processes

The following image explains that an application server can contain multiple domains with each domain containing multiple server processes



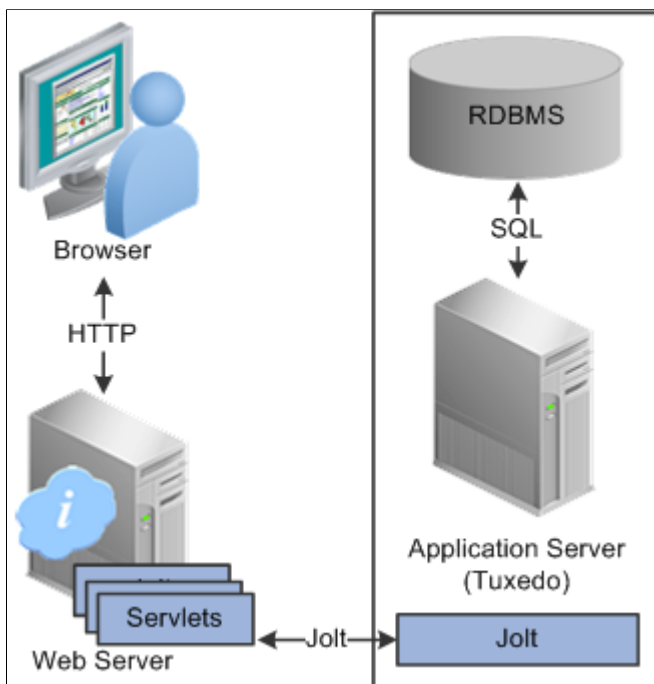
To enhance the scalability of your system, you can configure multiple domains on a single application server machine, and you can also incorporate multiple application server machines to meet the demands of your system.

Web Server

The web server receives application requests from the web environment (internet and intranet) and forwards the requests to the Oracle Jolt port on the application server. A collection of PeopleSoft servlets running on the web server handle incoming requests. Like the server processes on the application server, each PeopleSoft servlet is designed to perform unique functions. For example, the portal servlet handles browser requests while the gateway servlet handles service oriented architecture (SOA) messages and requests.

Image: PeopleSoft servlets on the web server receive web-based requests and forward those to Jolt on the application server

The below mentioned image illustrates how PeopleSoft servlets on the web server receive web-based requests and are forwarded to Jolt present on the application server



Supported web servers include:

- Oracle WebLogic
- IBM WebSphere

PeopleTools Development Environment

While many development and administrative tools and interfaces are accessible by browser, some tools are only available from a Windows-based workstation. The PeopleTools Development Environment refers to the Microsoft Windows workstations that run the collection of Windows-based PeopleTools, which enables application developers, technical specialists, and system administrators to perform a variety of tasks.

For example, application developers use PeopleSoft Application Designer in the development environment to create and modify application definitions such as fields, records, pages, and components. System administrators use PeopleSoft Data Mover in the development environment to import data into the database, for example.

The PeopleTools Development Environment can access the system using these connection types:

<i>Connection Type</i>	<i>Description</i>
Two-tier	Involves connecting directly to the database. A two-tier connection requires connectivity software per the RDBMS to be installed and configured on the workstation. A two-tier connection is required for many upgrade and installation tasks.
Three-tier	Involves connecting to the database through the application server. A three-tier connection requires no connectivity software to be installed on the workstation. In a three-tier connection, the application server maintains the connection to the database for transmitting SQL statements between the application server and the database. Only lightweight Tuxedo messages are sent between the workstation and the application server.

Application Access Types

The PeopleSoft Internet Architecture enables these application access types:

<i>Connection Type</i>	<i>Description</i>
Browser	<p>All PeopleSoft applications as well as many PeopleTools interfaces are rendered within a browser. No connectivity software is required on the workstation running the browser, nor are there any applets downloaded to the browser. All processing occurs within servlets on the web server and server processes on the application server. The system sends to the browser only HTML, JavaScript, and XML.</p> <p>Supported browser types include Microsoft Internet Explorer, Mozilla, FireFox, Chrome, and Safari.</p>
Remote system	<p>A remote system may be a separate PeopleSoft application, a third-party system, or a legacy system. The service oriented architecture (SOA) provided by PeopleSoft Integration Broker enables you to configure your PeopleSoft system to produce services for and consume services from other systems.</p>