

Oracle Utilities Operational Device Management

Quick Install Guide

Release 2.0.1.0

E35352-02

October 2012/updated November 2012

Copyright © 2000,2012, Oracle and/or its affiliates. All rights reserved.

This software and related documentation are provided under a license agreement containing restrictions on use and disclosure and are protected by intellectual property laws. Except as expressly permitted in your license agreement or allowed by law, you may not use, copy, reproduce, translate, broadcast, modify, license, transmit, distribute, exhibit, perform, publish, or display any part, in any form, or by any means. Reverse engineering, disassembly, or decompilation of this software, unless required by law for interoperability, is prohibited.

The information contained herein is subject to change without notice and is not warranted to be error-free. If you find any errors, please report them to us in writing.

If this software or related documentation is delivered to the U.S. Government or anyone licensing it on behalf of the U.S. Government, the following notice is applicable:

U.S. GOVERNMENT RIGHTS

Programs, software, databases, and related documentation and technical data delivered to U.S. Government customers are "commercial computer software" or "commercial technical data" pursuant to the applicable Federal Acquisition Regulation and agency-specific supplemental regulations. As such, the use, duplication, disclosure, modification, and adaptation shall be subject to the restrictions and license terms set forth in the applicable Government contract, and, to the extent applicable by the terms of the Government contract, the additional rights set forth in FAR 52.227-19, Commercial Computer Software License (December 2007).

Oracle America, Inc., 500 Oracle Parkway, Redwood City, CA 94065.

This software or hardware is developed for general use in a variety of information management applications. It is not developed or intended for use in any inherently dangerous applications, including applications which may create a risk of personal injury. If you use this software or hardware in dangerous applications, then you shall be responsible to take all appropriate fail-safe, backup, redundancy and other measures to ensure its safe use. Oracle Corporation and its affiliates disclaim any liability for any damages caused by use of this software or hardware in dangerous applications.

Oracle and Java are registered trademarks of Oracle and/or its affiliates. Other names may be trademarks of their respective owners.

Intel and Intel Xeon are trademarks or registered trademarks of Intel Corporation. All SPARC trademarks are used under license and are trademarks or registered trademarks of SPARC International, Inc. AMD, Opteron, the AMD logo, and the AMD Opteron logo are trademarks or registered trademarks of Advanced Micro Devices. UNIX is a registered trademark of The Open Group.

This software or hardware and documentation may provide access to or information on content, products and services from third parties. Oracle Corporation and its affiliates are not responsible for and expressly disclaim all warranties of any kind with respect to third party content, products and services. Oracle Corporation and its affiliates will not be responsible for any loss, costs, or damages incurred due to your access to or use of third party content, products or services.

Contents

Contents

Preface	i-i
Audience	i-i
Related Documents	i-i
Conventions	i-i
Additional Resources	i-ii
 Chapter 1	
Introduction	1-1
Introduction	1-1
Product Overview	1-2
Installation Overview	1-3
Installation Components	1-4
Installation Types	1-4
Initial Installation	1-4
Demo Installation	1-4
Upgrade Installation	1-5
Media Pack Components	1-5
Documentation Packages	1-5
Installation Packages.....	1-6
 Chapter 2	
Supported Platforms and Hardware Requirements	2-1
Operating Systems and Application Servers	2-1
Hardware Requirements.....	2-2
Application Server Memory Requirements	2-2
Additional Notes on Supported Platforms.....	2-3
Support for Software Patches and Upgrades	2-3
 Chapter 3	
Planning the Installation.....	3-1
Before You Install	3-1
Prerequisite Software List	3-1
Prerequisite Software for Database Server.....	3-1
Prerequisite Software for Application Server	3-2
Web Browser Requirements.....	3-2
Installing Prerequisite Software.....	3-2
Readiness Checklist	3-2
 Chapter 4	
Installing Oracle Utilities Operational Device Management - Initial Installation	4-1
Before You Install	4-1
Initial Installation Procedure	4-1
Database Component Installation.....	4-1

Application Components Installation.....	4-1
Installing Service Packs and Patches	4-2
Chapter 5	
Installing Oracle Utilities Operational Device Management - Demo Installation.....	5-1
Before You Install	5-1
Demo Installation Procedure	5-1
Database Component Installation.....	5-1
Application Components Installation.....	5-1
Installing Service Packs and Patches	5-2
.....	5-2
Chapter 6	
Upgrading Oracle Utilities Operational Device Management	6-1
Before You Upgrade.....	6-1
Upgrade Procedure	6-1
Database Component Upgrade	6-1
Application Components Upgrade	6-1
Installing Service Packs and Patches	6-2
Appendix A	
Additional Information for Installing Other Oracle Software	A-1
Oracle WebLogic 11gR1 (10.3.6).....	A-1
Install the Oracle WebLogic license.....	A-1

Preface

This guide provides an overview of installing Oracle Utilities Operational Device Management.

This preface contains these topics:

- **Audience**
- **Related Documents**
- **Conventions**
- **Additional Resources**

Audience

Oracle Utilities Operational Device Management Quick Installation Guide is intended for anyone interested in the process of installing Oracle Utilities Operational Device Management.

Related Documents

For more information, see these Oracle documents:

- *Oracle Utilities Operational Device Management Installation Guide*
- *Oracle Utilities Operational Device Management Database Administrator's Guide*
- *Oracle Utilities Operational Device Management Administration Guide*
- *Oracle Utilities Oracle Utilities Application Framework V4.2.0.0 Business Process Guide*
- *Oracle Utilities Application Framework V4.2.0.0 Administration Guide*
- *Operational Device Management Batch Server Administration Guide*

Conventions

The following text conventions are used in this document:

Convention	Meaning
boldface	Boldface type indicates graphical user interface elements associated with an action, or terms defined in text or the glossary.

Convention	Meaning
<i>italic</i>	Italic type indicates book titles, emphasis, or placeholder variables for which you supply particular values.
monospace	Monospace type indicates commands within a paragraph, URLs, code in examples, text that appears on the screen, or text that you enter.

Additional Resources

To contact Oracle support, visit the Oracle Support Web site at:

<http://www.oracle.com/support/index.html>

Chapter 1

Introduction

This chapter provides an overview of the Oracle Utilities Operational Device Management product and installation process. It contains the following sections:

- **Introduction**
- **Product Overview**
- **Installation Overview**
- **Installation Components**
- **Installation Types**
- **Media Pack Components**

Introduction

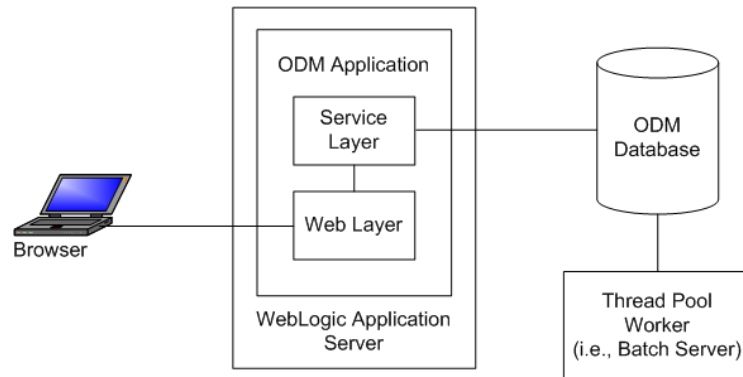
Oracle Utilities Operational Device Management provides functionality to handle large volumes of assets and to manage the receipt, installation, maintenance, tracking and removal of those assets.

Oracle Utilities Operational Device Management supports the following business processes:

- Capturing device attributes and supporting any type of device
- Supporting integration with other utility applications requiring Device information and configuration
- Supporting detailed smart device attributes
- Supporting detailed location management and tracking of individual devices throughout their lifecycle
- Capturing device configurations, settings and calibrations
- Tracking firmware on smart devices
- Validating devices at the time of receipt
- Scheduling and capturing data related to periodic inspection history over time
- Defining cycle information to schedule inspections
- Defining procedures to follow when performing inspections
- Using activities and work orders to track and manage the electronic or in-field maintenance of devices
- Creating work activity/work order document to be used in the field for inspection work
- Defining a work activity/work order life cycle

Product Overview

The following figure describes an overview of the Oracle Utilities Operational Device Management product.



Oracle Utilities Operational Device Management (ODM) is housed in the Oracle WebLogic J2EE Web Application Server. ODM has two layers: web and service. The application is accessed by using a browser, which connects to the web layer.

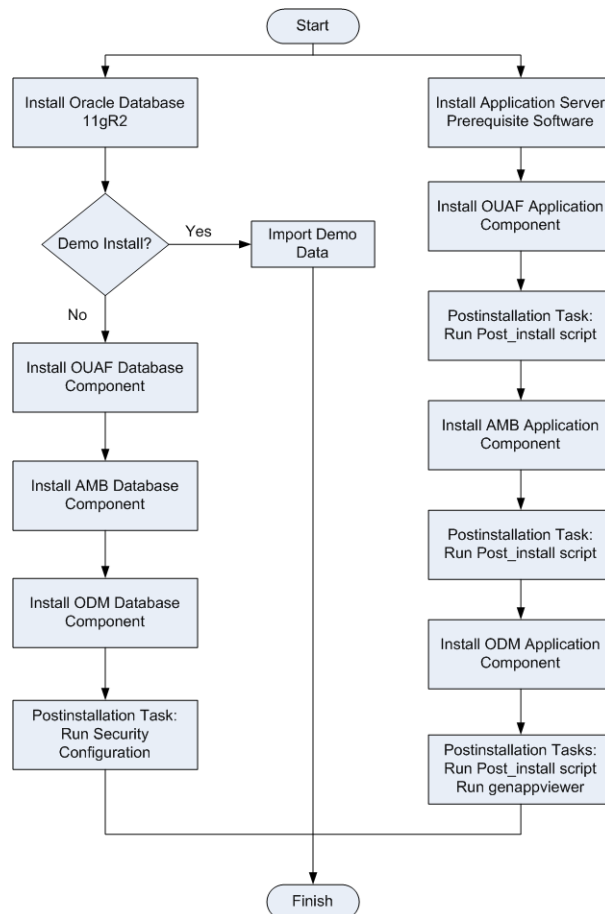
ODM data is stored in the Oracle Database. For processing large amounts of data, ODM provides thread pool worker (batch server) that interacts with the same ODM database.

Installation Overview

Oracle Utilities Operational Device Management consists of several components all of which need to be installed for a successful installation. Refer to **Installation Components** for the list of components comprising the product.

Certain prerequisite software may need to be installed for installing each of these components. Refer to **Prerequisite Software List** for the list of prerequisite software for each component.

The following figure details the workflow for the installation process.



Installation Components

The Oracle Utilities Operational Device Management product installation consists of the following components:

- Database Components:
 - Oracle Utilities Application Framework database
 - Oracle Utilities Asset Management Base database
 - Oracle Utilities Operational Device Management database
- Application Components:
 - Oracle Utilities Application Framework application
 - Oracle Utilities Asset Management Base application
 - Oracle Utilities Operational Device Management application

For a successful installation, you must install ALL of the above components.

Installation Types

The first step in the installation procedure is to determine the installation type that meets your business requirements. The following are the possible installation types:

- **Initial Installation** - a base installation, typically used for a production environment
- **Demo Installation** - a base installation with pre-populated demo data, typically used for demonstration or training purposes
- **Upgrade Installation** - an upgrade installation from version 2.0.0 to version 2.0.1.0

The following sections describe these installation types in detail.

Initial Installation

This installation type is applicable when installing Oracle Utilities Operational Device Management for the first time or from scratch. For an initial install, you must install all of the following components:

- Database components:

Refer to the “Initial Install” section of the *Oracle Utilities Operational Device Management Database Administrator’s Guide* for more information.
- Application components:
 - Oracle Utilities Application Framework application
 - Oracle Utilities Asset Management Base application
 - Oracle Utilities Operational Device Management application

Refer to chapter “Installing Oracle Utilities Operational Device Management - Initial Installation” of the *Oracle Utilities Operational Device Management Installation Guide* for the steps involved in installing each of the above components.

Demo Installation

This installation type is applicable when installing a demo application of Oracle Utilities Operational Device Management for demonstration or training purposes. For a demo install, you must install all of the following components:

- Demo Database components:

Refer to the “Demo Install” section of the *Oracle Utilities Operational Device Management Database Administrator's Guide* for more information.

- Application components:
 - Oracle Utilities Application Framework application
 - Oracle Utilities Asset Management Base application
 - Oracle Utilities Operational Device Management application

Refer to chapter “Installing Oracle Utilities Operational Device Management - Demo Installation” of the *Oracle Utilities Operational Device Management Installation Guide* for the steps involved in installing each of the above components.

Upgrade Installation

This installation type is applicable when upgrading Oracle Utilities Operational Device Management from version 2.0.0 to 2.0.1.0. For an upgrade, you must upgrade all of the following components:

- Database components:

Refer to the “Upgrade Install” section of the *Oracle Utilities Operational Device Management Database Administrator's Guide* for more information.
- Application components:
 - Oracle Utilities Application Framework application
 - Oracle Utilities Asset Management Base application
 - Oracle Utilities Operational Device Management application

Refer to chapter “Upgrading Oracle Utilities Operational Device Management” in the *Oracle Utilities Operational Device Management Installation Guide* for the steps involved in upgrading each of the above components.

Media Pack Components

The following Media Pack components are part of the product package:

Documentation Packages

- *Oracle Utilities Operational Device Management Release Notes*
- *Oracle Utilities Operational Device Management Quick Install Guide*
- *Oracle Utilities Operational Device Management Database Administrator's Guide*
- *Oracle Utilities Operational Device Management Installation Guide*
- *Oracle Utilities Operational Device Management User Guide*
- *Oracle Utilities Operational Device Management Configuration Guide*
- *Oracle Utilities Application Framework v4.2.0.0 Administration Guide*
- *Oracle Utilities Application Framework v4.2.0.0 Business Process Guide*
- *Oracle Utilities Operational Device Management Server Administration Guide*
- *Oracle Utilities Operational Device Management Batch Server Administration Guide*

Installation Packages

- Oracle Utilities Application Framework v4.2.0.0.0 Multiplatform
- Oracle Utilities Application Framework v4.2.0.0.0 Single Fix PreRequisite Rollup for ODM V2.0.1.0.0
- Oracle Utilities Asset Management Base v2.0.1.0.0 Multiplatform
- Oracle Utilities Operational Device Management v2.0.1.0.0 Multiplatform
- Oracle Utilities Operational Device Management v2.0.1.0.0 Oracle Database Multiplatform

Chapter 2

Supported Platforms and Hardware Requirements

This chapter includes the following details:

- **Operating Systems and Application Servers**
- **Hardware Requirements**
- **Application Server Memory Requirements**
- **Additional Notes on Supported Platforms**
- **Support for Software Patches and Upgrades**

Operating Systems and Application Servers

This installation is certified to operate on many operating system, application server and database server combinations.

The following table details the operating system and application server combinations on which this version of the application has been tested and certified.

Operating System and Web Browser (Client)	Operating System (Server)	Chipset	Application Server	Database
Windows XP SP3 (Internet Explorer 8.x or 9.x)	AIX 7.1 TL01 SP1	Power 64-bit	WebLogic 10.3.6	Oracle 11.2.0.1+
	Oracle Linux 5.8/6.2 (64-bit)/Red Hat Enterprise Linux 5.8/6.2 (64-bit)	x86_64	WebLogic 10.3.6	Oracle 11.2.0.1+
Windows 7 (32 and 64 bit) (Internet Explorer 8.x or 9.x)	Oracle Solaris 10 update 9 (64-bit)	SPARC 64-bit	WebLogic 10.3.6	Oracle 11.2.0.1+
	Windows Server 2008 R2 (64-bit)	x86_64	WebLogic 10.3.6	Oracle 11.2.0.1+

Hardware Requirements

Client Side Hardware Requirements

Configuration	Processor	Memory (RAM)	Monitor (Display)
Minimum	Pentium IV - 2.0 GHz	1024 MB	1024X768** 16-bit Color
Recommended*	Pentium IV -3.0+ GHz, (or) any Core 2 Duo (or) any Athlon X2	2048 MB	1280X1024** 32-bit Color

* The Recommended configuration supports better performance of the client.

** To reduce the amount of scrolling required for pages that are longer than 768 or 1024 pixels, consider placing a monitor into vertical position (with narrow side on the bottom).

Application Server Memory Requirements

For each application server environment a minimum of 4 GB of real memory is required, plus 6 GB of swap space.

Disk Space Requirements

The approximate disk space requirements in a standard installation are as follows:

Location	Size	Usage
Install_dir Location	5 GB minimum	This location is where the application and Framework get installed. Startup, shutdown and other online log files are stored here. The size and space that is used should be monitored because various debugging options can significantly affect the size of log files.
Log Location	2 GB minimum	This location is used for storing batch log files and output from batch jobs. The size of this space should be influenced by which batches are run and how often, and the amount of debugging information that is collected.
Location of the application web work files on the web servers	1.5 GB minimum	This location is used by various web server vendors to expand the application. It should be considered when installing these products. Refer to the individual web server documentation to determine the location of the temporary files.
Installation Temporary Area	4 GB	The application gets installed from this location. You need enough space to uncompress the files and install the application.
Oracle data area	4 GB minimum	This location is where the Oracle database data files are stored. The size of this space should be based on the requirements of the production environment. For an initial or demo database install 4 GB should be sufficient.

Additional Notes on Supported Platforms

Oracle Database Server - This version of Oracle Utilities Operational Device Management is supported on Oracle Database Server 11.2.0.1+ on operating systems listed in above section. The following versions of the database are supported:

- Oracle Database Enterprise Edition
- Oracle Database Standard Edition

Oracle VM Support - This version of Oracle Utilities Operational Device Management is supported on Oracle VM 2.2.2 for supported releases of Oracle Linux and Microsoft Windows operating systems.

Oracle Support Policy on VMWare - Refer to My Oracle Support knowledge base article 249212.1 for Oracle's support policy on VMWare

Support for Software Patches and Upgrades

Due to the ongoing nature of software improvement, vendors will issue patches and service packs for the operating systems, application servers and database servers on top of specific versions that Oracle Utilities Operational Device Management has been tested with.

If it is necessary to apply an upgrade, please do so in a test environment that is running on the same platform as your production environment prior to updating the Oracle Utilities Operational Device Management production environment.

The exception from this rule is Hibernate software version 4.1.0. This version should not be upgraded.

Always contact Oracle Utilities Operational Device Management support prior to applying vendor updates that do not guarantee backward compatibility.

Chapter 3

Planning the Installation

This chapter provides information for planning an Oracle Utilities Operational Device Management installation, including:

- **Before You Install**
- **Prerequisite Software List**
- **Installing Prerequisite Software**
- **Readiness Checklist**

Before You Install

Refer to My Oracle Support for up-to-date additional information about installing Oracle Utilities Operational Device Management.

Prerequisite Software List

Before you install Oracle Utilities Operational Device Management, you must install prerequisite software.

Refer to the respective installation documentation of the software for instructions on downloading and installing.

Prerequisite Software for Database Server

The prerequisite software for the database component of Oracle Utilities Operational Device Management is as follows:

- Oracle Database Server 11.2.0.1+ - This is required for installing the database component of the Oracle Utilities Operational Device Management product. The following versions of the database server are supported:
 - Oracle Database Enterprise Edition
 - Oracle Database Standard Edition

Prerequisite Software for Application Server

The prerequisite software for the application component of Oracle Utilities Operational Device Management is as follows:

- Oracle Database 11g Release 2 Client
- JDK 1.6.0_20 (64-bit)
- Oracle Web Logic 11gR1 (10.3.6)
- Hibernate 4.1.0

Web Browser Requirements

The following operating system / web browser software are supported:

- Windows XP SP3 or higher with Internet Explorer 8.x or 9.x
- Windows 7 (32-bit or 64-bit) with Internet Explorer 8.x or 9.x

Installing Prerequisite Software

Refer to the section “**Installing Prerequisite Software**” in the *Oracle Utilities Operational Device Management Installation Guide* for detailed instructions on installing the prerequisite software.

Readiness Checklist

The following checklist will guide you through the installation process of Oracle Utilities Operational Device Management. The details for each step are presented in the *Oracle Utilities Operational Device Management Installation Guide*.

1. Confirm recommended hardware is ready. Refer to **Supported Platforms and Hardware Requirements** for more details.
2. Install prerequisite software, refer to **Prerequisite Software List** for more details.
3. Ensure that you have downloaded Oracle Utilities Operational Device Management v2.0.1.0 components.
4. Go through the installation and configuration worksheets to understand the configuration menu.
5. Determine type of the installation:
 - **Initial** Installation - For initial installation follow the instructions mentioned in *Oracle Utilities Operational Device Management Installation Guide*.
 - **Demo** Installation - For demo installation follow the instructions mentioned in *Oracle Utilities Operational Device Management Installation Guide*.
 - **Upgrade** Installation - For upgrade installation from v2.0.0 to v2.0.1.0 follow the instructions mentioned in *Oracle Utilities Operational Device Management Installation Guide*.
6. Perform post-installation tasks.

Chapter 4

Installing Oracle Utilities Operational Device Management - Initial Installation

This chapter provides an overview of installing Oracle Utilities Operational Device Management from scratch. This chapter includes:

- **Before You Install**
- **Initial Installation Procedure**
- **Installing Service Packs and Patches**

Before You Install

Refer to My Oracle Support for up-to-date additional information on Oracle Utilities Operational Device Management.

Initial Installation Procedure

The initial installation procedure consists of:

- **Database Component Installation**
- **Application Components Installation**

Database Component Installation

Installation of the database component of Oracle Utilities Operational Device Management must be complete before you can proceed with the following sections. Refer to the section “**Initial Install**” of the *Oracle Utilities Operational Device Management Database Administrator's Guide*, which provides instructions on installing the database component.

Application Components Installation

Refer to the chapter “**Installing Oracle Utilities Operational Device Management - Initial Installation**” of the *Oracle Utilities Operational Device Management Installation Guide*, which provides instructions on installing the application components.

Installing Service Packs and Patches

Periodically, Oracle Utilities releases a service pack of single fixes for its products. A service pack is an update to an existing release that includes solutions to known problems and other product enhancements. A service pack is not a replacement for an installation, but a pack consisting of a collection of changes and additions for it. The service pack may include changes to be applied to the application server, the database, or both. The service pack includes all files necessary for installing the collection of changes, including installation instructions.

Between services packs, Oracle Utilities releases patches to fix individual bugs. For information on installing patches, refer to knowledge base article ID 974985.1 on My Oracle Support.

Service packs and patches can be downloaded from My Oracle Support (<https://support.oracle.com/>).

Chapter 5

Installing Oracle Utilities Operational Device Management - Demo Installation

This chapter provides an overview of the instructions for setting up a demo application of Oracle Utilities Operational Device Management useful for demonstration or training purposes. This chapter includes:

- **Before You Install**
- **Demo Installation Procedure**
- **Installing Service Packs and Patches**

Before You Install

Refer to My Oracle Support for up-to-date additional information on Oracle Utilities Operational Device Management.

Demo Installation Procedure

The demo installation procedure consists of:

- **Database Component Installation**
- **Application Components Installation**

Database Component Installation

Installation of the database component of Oracle Utilities Operational Device Management must be complete before you can proceed with the following sections. Refer to the section “**Demo Install**” of the *Oracle Utilities Operational Device Management Database Administrator's Guide*, which provides instructions on installing the database component with pre-populated demo data.

Application Components Installation

Refer to the chapter “**Installing Oracle Utilities Operational Device Management - Demo Installation**” of the *Oracle Utilities Operational Device Management Installation Guide*, which provides instructions on installing the application components.

Installing Service Packs and Patches

Periodically, Oracle Utilities releases a service pack of single fixes for its products. A service pack is an update to an existing release that includes solutions to known problems and other product enhancements. A service pack is not a replacement for an installation, but a pack consisting of a collection of changes and additions for it. The service pack may include changes to be applied to the application server, the database, or both. The service pack includes all files necessary for installing the collection of changes, including installation instructions.

Between services packs, Oracle Utilities releases patches to fix individual bugs. For information on installing patches, refer to knowledge base article ID 974985.1 on My Oracle Support.

Service packs and patches can be downloaded from My Oracle Support (<https://support.oracle.com/>).

Chapter 6

Upgrading Oracle Utilities Operational Device Management

This chapter provides an overview of upgrading Oracle Utilities Operational Device Management from v2.0.0 to v2.0.1.0. This chapter includes:

- **Before You Upgrade**
- **Upgrade Procedure**
- **Installing Service Packs and Patches**

Before You Upgrade

Review the list of operating system, application server and database server combinations that Oracle Utilities Operational Device Management is certified to operate on, in the chapter **Supported Platforms and Hardware Requirements**.

For further assistance, contact My Oracle Support before you upgrade.

Upgrade Procedure

The initial installation procedure consists of:

- **Database Component Upgrade**
- **Application Components Upgrade**

Database Component Upgrade

Upgrade of the database component of Oracle Utilities Operational Device Management must be complete before you can proceed with the following sections. Refer to the chapter “**Upgrade Install**” of the *Oracle Utilities Operational Device Management Database Administrator's Guide*, which provides instructions on upgrading the database component.

Application Components Upgrade

Refer to the chapter “**Upgrading Oracle Utilities Operational Device Management**” of the *Oracle Utilities Operational Device Management Installation Guide*, which provides instructions on installing the application components.

Installing Service Packs and Patches

Periodically, Oracle Utilities releases a service pack of single fixes for its products. A service pack is an update to an existing release that includes solutions to known problems and other product enhancements. A service pack is not a replacement for an installation, but a pack consisting of a collection of changes and additions for it. The service pack may include changes to be applied to the application server, the database, or both. The service pack includes all files necessary for installing the collection of changes, including installation instructions.

Between services packs, Oracle Utilities releases patches to fix individual bugs. For information on installing patches, refer to knowledge base article ID 974985.1 on My Oracle Support.

Service packs and patches can be downloaded from My Oracle Support (<https://support.oracle.com/>).

Appendix A

Additional Information for Installing Other Oracle Software

Please read this section and the follow directions if you purchased a license from Oracle for Oracle WebLogic 11gR1 (10.3.6)

Oracle WebLogic 11gR1 (10.3.6)

Customers must download Oracle WebLogic Server from the Oracle Software Delivery Cloud. The version of Oracle WebLogic Server is in the Oracle Utilities Operational Device Management Supported Platforms Summary section.

Note: If you install a temporary license for Oracle WebLogic, please note that this license is limited to 5 non-current users. You will need to install the full license.

Install the Oracle WebLogic license

To apply a full license you will need to complete the following steps:

1. The license keys for Oracle WebLogic products are located at:
<http://licensecodes.oracle.com/bea.html>
2. The following products are supported: Oracle WebLogic Server Standard Edition and Oracle WebLogic Server Enterprise Edition.
3. At the time of release of this document the license key on the web site for Oracle WebLogic Server Standard Edition is BEA WebLogic Server Advantage Edition. The license key for Oracle WebLogic Server Enterprise Edition on the web site is BEA WebLogic Server Premium Edition.
4. Shut down the Oracle Utilities Operational Device Management application server.
5. Follow the instructions from the Oracle WebLogic installation document to install the license key.
6. Start the Oracle Utilities Operational Device Management application server.