

Oracle Insurance

**Insbridge Rating and
Underwriting
IBRU Upgrade Guide**

Release 4.6.1

November 2012

Copyright © 2005, 2012, Oracle and/or its affiliates. All rights reserved.

Oracle Insurance Insbridge Rating and Underwriting IBRU Upgrade Guide

Release 4.6.1

Part # E36914-01

Library # E36936-01

November 2012

Primary Authors: Mary Elizabeth Wiger

This software and related documentation are provided under a license agreement containing restrictions on use and disclosure and are protected by intellectual property laws. Except as expressly permitted in your license agreement or allowed by law, you may not use, copy, reproduce, translate, broadcast, modify, license, transmit, distribute, exhibit, perform, publish, or display any part, in any form, or by any means. Reverse engineering, disassembly, or decompilation of this software, unless required by law for interoperability, is prohibited.

The information contained herein is subject to change without notice and is not warranted to be error-free. If you find any errors, please report them to us in writing.

If this software or related documentation is delivered to the U.S. Government or anyone licensing it on behalf of the U.S. Government, the following notice is applicable:

U.S. GOVERNMENT RIGHTS

Programs, software, databases, and related documentation and technical data delivered to U.S. Government customers are "commercial computer software" or "commercial technical data" pursuant to the applicable Federal Acquisition Regulation and agency-specific supplemental regulations. As such, the use, duplication, disclosure, modification, and adaptation shall be subject to the restrictions and license terms set forth in the applicable Government contract, and, to the extent applicable by the terms of the Government contract, the additional rights set forth in FAR 52.227-19, Commercial Computer Software License (December 2007). Oracle USA, Inc., 500 Oracle Parkway, Redwood City, CA 94065.

This software is developed for general use in a variety of information management applications. It is not developed or intended for use in any inherently dangerous applications, including applications which may create a risk of personal injury. If you use this software in dangerous applications, then you shall be responsible to take all appropriate fail-safe, backup, redundancy, and other measures to ensure the safe use of this software. Oracle Corporation and its affiliates disclaim any liability for any damages caused by use of this software in dangerous applications.

Oracle is a registered trademark of Oracle Corporation and/or its affiliates. Other names may be trademarks of their respective owners.

This software and documentation may provide access to or information on content, products, and services from third parties. Oracle Corporation and its affiliates are not responsible for and expressly disclaim all warranties of any kind with respect to third-party content, products, and services. Oracle Corporation and its affiliates will not be responsible for any loss, costs, or damages incurred due to your access to or use of third-party content, products, or services.

Where an Oracle offering includes third party content or software, we may be required to include related notices. For information on third party notices and the software and related documentation in connection with which they need to be included, please contact the attorney from the Development and Strategic Initiatives Legal Group that supports the development team for the Oracle offering. Contact information can be found on the Attorney Contact Chart.

The information contained in this document is for informational sharing purposes only and should be considered in your capacity as a customer advisory board member or pursuant to your beta trial agreement only. It is not a commitment to deliver any material, code, or functionality, and should not be relied upon in making purchasing decisions. The development, release, and timing of any features or functionality described in this document remains at the sole discretion of Oracle.

This document in any form, software or printed matter, contains proprietary information that is the exclusive property of Oracle. Your access to and use of this confidential material is subject to the terms and conditions of your Oracle Software License and Service Agreement, which has been executed and with which you agree to comply. This document and information contained herein may not be disclosed, copied, reproduced, or distributed to anyone outside Oracle without prior written consent of Oracle. This document is not part of your license agreement nor can it be incorporated into any contractual agreement with Oracle or its subsidiaries or affiliates.

CONTENTS

PREFACE	6
AUDIENCE	6
TYPES OF INSTALLATION	6
<i>Definitions</i>	<i>7</i>
<i>Related Documents</i>	<i>8</i>
<i>Manual History</i>	<i>8</i>
CHAPTER 1	9
SYSTEM UPGRADE REQUIREMENTS	9
<i>Oracle Software Delivery Cloud</i>	<i>9</i>
QUICK VIEW	11
UPGRADING RATEMANAGER, IBFA AND SR-WIN	11
CHAPTER 2	12
UPDATING AN INSBRIDGE APPLICATION	12
STEP 1 – SHUT DOWN THE INSBRIDGE COMPONENT SERVICES (COM +)	12
STEP 2 – RUNNING THE IBRU APPLICATION	14
STEP 3 – STARTING INSBRIDGE SERVICES	20
STEP 4 – UPDATING DATABASES	21
<i>Updating Databases in RateManager</i>	<i>21</i>
<i>Updating a SoftRater for Windows Database</i>	<i>23</i>
CHAPTER 3	24
OPTIONAL STEPS	24
STEP 1 – MIGRATE WORK FILES	24
<i>Performing the Migration in RateManager</i>	<i>25</i>
STEP 2 – UPDATING PREFERENCES	29
<i>Web Settings</i>	<i>30</i>
CHAPTER 4	33
UPGRADING TO A NEW MACHINE	33
<i>Step 1: Install RateManager/IBFA</i>	<i>33</i>
<i>Step 2: Export the Insbridge Registry Key</i>	<i>33</i>
<i>Step 3: Importing the Registry Key</i>	<i>34</i>
<i>Step 4: Copy the Insbridge.XML File</i>	<i>34</i>
<i>Step 5: Paste the Insbridge.XML File</i>	<i>35</i>
<i>Step 6: Complete the RateManager/IBFA Installation</i>	<i>35</i>
<i>Step 7: Run the Oracle Client – Optional</i>	<i>35</i>
<i>Step 8: Manually Migrate Workfiles</i>	<i>35</i>

IMPORTING REGISTRY KEY AFTER INSTALLATION	36
<i>Step 1: Export the Insbridge Registry Key</i>	36
<i>Step 2: Importing the Registry Key</i>	36
<i>Step 3: Re-enter Username and Password</i>	36
<i>Upgrading the Database Machine</i>	37
CHAPTER 5	38
MANUAL UPDATES TO THE IBRU DATABASES	38
<i>Updating a SoftRater for Windows Database</i>	40
QUICK VIEW	41
UPGRADING SOFTRATER FOR JAVA	41
CHAPTER 6	42
SOFTRATER UPDATES	42
<i>UPGRADE NOTICE</i>	42
UPGRADING WEBLOGIC.....	43
UPGRADING WEBSPHERE	45
UPGRADING JBOSS	47
UPDATING SOFTRATER FOR JAVA DATABASES	50
<i>SQL Server Update</i>	50
<i>Oracle Database Update</i>	50
SUPPORT	51
CONTACTING SUPPORT	51
TTY ACCESS TO ORACLE SUPPORT SERVICES	51
INDEX	52

LIST OF FIGURES

Figure 1 Component Services.....	13
Figure 2 Installing Insbridge.....	14
Figure 3 Destination Location for Update	15
Figure 4 Entering User Information for Insbridge.....	16
Figure 5 Selecting Features to Install	17
Figure 6 Ready to Install	18
Figure 7 Insbridge Services Screen	20
Figure 8 Tool Mandatory Update	21
Figure 9 Available Updates.....	22
Figure 10 Updating Scripts in RateManager.....	23
Figure 11 Location of WorkFiles	24
Figure 12 Migrating Work Files	26
Figure 13 Confirming a Migration.....	26
Figure 14 Successful Migration.....	27
Figure 15 Verifying File Migration in RateManager	27
Figure 16 Verifying File Migration at Server Level	28
Figure 17 Preferences Settings.....	30
Figure 18 Updating Database	39
Figure 19 Script Viewer.....	39

PREFACE

Welcome to the *Oracle Insurance Insbridge Rating and Underwriting IBRU Upgrade Guide*. The Insbridge Rating and Underwriting (IBRU) System is a browser-based, multiplatform insurance rating and underwriting technology solution that provides integrated management for every aspect of the rate definition and modification process. This guide helps with the upgrading of the Insbridge Rating and Underwriting System.

There are different types of upgrades available to the 4.6.1 release of the IBRU system:

- RateManager/IBFA
- SoftRater for Windows
- SoftRater for WebLogic
- SoftRater for WebSphere
- SoftRater for JBoss

This document focuses on upgrading RateManager/IBFA and SoftRater for Windows. Also included are the steps for upgrading SoftRater for WebLogic, WebSphere and JBoss. Detailed instructions for these upgrades can be found in the corresponding installation guide.

AUDIENCE

This guide is intended for system administrators, installers, database administrators and others tasked with installing and configuring the IBRU system and associated databases.

TYPES OF INSTALLATION

There are various types of installations:

RateManager Installation

- **Full RateManager** – This installation installs RateManager and the Insbridge Framework Administrator (IBFA). This is for a Windows only environment using a SQL Server database.

SoftRater Installation

- **Full SoftRater for Java Installation** – This installation deploys SoftRater to an application server; WebLogic, WebSphere or JBoss, using a SQL Server database or an Oracle database.

- **Full SoftRater for Windows Node** – This installation is for existing environments that want to add a SoftRater for Windows node to an environment. This is for a Windows only environment using a SQL Server database, or an Oracle database.

Upgrading a Current Installation

- **Upgrade** – This installation is for existing customers and will take their current version of IBRU up to version 04.06.01.

This guide will describe **Upgrading an existing environment**.

Definitions

Some commonly used terms when installing or using the Oracle Insurance Insbridge Rating and Underwriting system:

- **IBRU** – Insbridge Rating and Underwriting System. This is the entire system.
- **IBFA** – Insbridge Framework Administrator. IBFA is an administrative tool used to configure Insbridge applications and setup RateManager database connections. IBFA will be located on a Windows Server machine. IBFA/SR-WIN is an Insbridge Framework Administrator/SoftRater for Windows.
- **IBSS** – Insbridge SoftRater Server. IBSS is the administrative tool for the SoftRater engine. The SoftRater engine is a multi-platform component within IBRU that executes the rules, rating and underwriting instructions as defined by the user in RateManager. IBSS is usually located on a Java machine. IBSS/SR-JAVA is an Insbridge SoftRater Server/SoftRater for Java.
- **SoftRater Node** – A SoftRater node is either an IBFA (without RateManager) or IBSS instance on a physical environment.
- **SoftRater Native** – SoftRater Native is a remote instance of SoftRater that can execute rules and rating logic in environments where access via the SoftRater web-services is not desired or possible.
- **RM** – RateManager. RateManager is a component within IBRU that enables users to manage the product definition and modification process, including rating and underwriting logic.
- **SR** – SoftRater. The engine that executes the rating, rules and underwriting instructions defined within RateManager. The rating environment for runtime execution and processing of business content. SoftRater can be further defined by the operating system where it has been loaded.
- **SR-WIN** – SoftRater for Windows. This is also another name for IBFA.
- **SR-JAVA** – SoftRater for Java. This is also another name for IBSS.
- **SRP** – SoftRater Packages. A package that holds all the RateManager logic for a specific program and version.
- **VFS** – Virtual File Servers. Virtual file server management allows you to access environments that are located on other machines in different locations where packages can be downloaded.

- **Package Location** – A pointer to a location where SoftRater Packages (SRP's) are stored.
- **Physical Environment** – A physical environment is generally referred to as a physical machine.
- **Authoring Environment** – The physical machine where RateManager is installed.
- **Rating Environment** – The physical machine(s) where SoftRater is installed. This is typically the same as a SoftRater node.
- **Logical Environment** – An environment created for a subscriber in IBFA. It defines package location, engine location and database location in addition to several other supporting data items. This environment is used for rating and/or SRP management. Each database connection will have a logical environment.

Related Documents

For more information, refer to the following Oracle resources:

- The Oracle Insurance Insbridge Rating and Underwriting Operating Environments for Hardware and Software.
- You can view this guide on-line at this address:

<http://www.oracle.com/technetwork/documentation/insurance-097481.html>

Manual History

New editions incorporate any updates issued since the previous edition.

Edition	Publication Number	Product Version	Publication Date	Comment
1 st Edition	P01-788-01		May 2011	Initial Release
2 nd Edition	P01-788-02	R 4.5.1	September 2011	Update
3 rd Edition	P01-788-03	R 4.6	May 2012	Update
4 th Edition	P01-788-04	R 4.6.1	November 2012	Update

SYSTEM UPGRADE REQUIREMENTS

Prior to upgrading an IBRU system, please have ready:

- The Insbridge User Account information.
- The location of the current IBRU installation.
- Prior to running an IBRU upgrade, please make sure all users are logged off.
- The Insbridge User has administrative rights or proper permissions to run an installation and start the Insbridge Message Service and the Insbridge Task Manager Service.
- You must run as Administrator for a Windows 2008 Server upgrade.
- Administrator User name and password for RateManager.

OR

- Access to the IBRU databases. Updates are run against the IBRM and the IB_CLIENT databases. SoftRater databases may not require an update.

NOTE: *Upgrades are performed the same way for either a 32-bit machine or a 64-bit machine. The same permissions and requirements are needed and should already be set up.*

NOTE: *If you attempting to update from a 32-bit Insbridge instance to a 64-bit Insbridge instance, please contact Oracle Support.*

Oracle Software Delivery Cloud

Prior to installation, please make sure the source machine(s) where IBRU will be loaded has an unzip utility. An unzip utility for most platforms is available on the Oracle Software Delivery Cloud download page.

Documentation from Oracle Software Delivery Cloud is in PDF format. Prior to installation, please make sure the source machine(s) where IBRU documentation will be loaded has a PDF reader.

Files are downloaded with part numbers as file names. Please make note of the part numbers you have downloaded and the corresponding file name. You may be asked to provide the part numbers or the filename if you contact Oracle Insurance Support.

The installation downloads you can select are:

- **Insbridge IBRU Install** – This is required for all RateManager installations
- **SoftRater for WebSphere** – This is required if you are using WebSphere

- **SoftRater for WebLogic** – This is required if you are using WebLogic
- **SoftRater for Jboss** – This is required if you are using Jboss
- **Documentation** – It is recommended that you download the documentation. Installation guides and user guides are located here.

The 04.06.01-Insbridge-IBRU folder contents:

- **Databases**
 - ♦ DB2
 - SoftRater – IBSR
 - DDL
 - ♦ Oracle
 - SoftRater – IBSR
 - DDL
 - Update:Usp_IBSR_v04.05.00oracle
 - ♦ SQL Server
 - RateManager – IBRM
 - Latin1_General_BIN
 - DATABASE_BACKUP_IBRM_TEMPLATE_CASE_SENSITIVE.bak
 - SQL_Latin1_General_CP1_CI_AS
 - DATABASE_BACKUP_IBRM_TEMPLATE.bak
 - Security – IB_CLIENT
 - SQL_Latin1_General_CP1_CI_AS
 - DATABASE_BACKUP_IB_CLIENT_TEMPLATE.bak
 - SoftRater – IBSR
 - Latin1_General_BIN
 - DATABASE_BACKUP_IBSR_TEMPLATE_CASE_SENSITIVE.bak
 - SQL_Latin1_General_CP1_CI_AS
 - DATABASE_BACKUP_IBSR_TEMPLATE.bak
 - Update:Usp_IBSR_v04.05.01.sql- **IE7_IE8 Users**
 - ♦ Insbridge IE7 Active X Control Update PDF
 - ♦ RateManager_IE7_IE8.exe
- **Oracle BI Publisher**
 - ♦ OBI_PUBLISHER.exe
- **Oracle Client**
 - ♦ Oracle_client.exe
- **Oracle Insurance – Insbridge Rating and Underwriting.exe**

No license file is required.

SoftRater can be installed any time after the Insbridge Framework Administrator and RateManager have been installed. SoftRater must be installed prior to any users creating packages. Please note, all folders and files may not be needed, depending upon the kind of setup you want.

UPGRADING RATEMANAGER, IBFA AND SR-WIN

Windows should be up and running prior to upgrading. Make sure all users have logged off the system.

Steps to Upgrade RateManager/IBFA:

Every upgrade will require:

- **Step 1:** Shut Down the Component Services (Com +)
- **Step 2:** Run the IBRU exe. This will update the application.
- **Step 3:** Start Insbridge Message Service.
- **Step 4:** Login to RateManager and perform IBRU database updates.

NOTE: *Updates can be performed manually, if desired. Manual updates are performed directly in SQL Server.*

This will take RateManager and the corresponding IBFA from 4.0 or later to release 4.6.1.

Additional Steps to Upgrade RateManager/IBFA

You will need to run this step if you are currently running release 3.13.7 or previous:

This procedure takes RateManager and the corresponding IBFA from 3.13.7 or previous to release 4.6.1 and make sure that previous workfiles are available.

- **Step 1:** Migrate Workfiles.
- **Step 2:** Update Preferences. Make any updates to Preferences at this time.

Steps to Upgrade SoftRater for Windows from a Previous Release

This procedure takes a SoftRater for Windows node from a previous version to release 4.6.1. This setup must utilize SQL Server.

- **Step 1:** Shut Down the Component Services (Com +)
- **Step 2:** Run the IBRU exe. This will update the application.
- **Step 3:** Start Insbridge Message Service.
- **Step 4:** Run the SQL script Usp_IBSR_v04.05.01.sql, located in the IBRU download→Database→SQL Server→SoftRater file. This script will need to be run manually by the DBA.
- **If you updating from release 4.5.1, you do not need to run the update script.**

UPDATING AN INSBRIDGE APPLICATION

Every upgrade requires:

- **Step 1:** Shut down the Insbridge Component Services (Com +)
- **Step 2:** Run the IBRU exe. This updates the application.
- **Step 3:** Start Insbridge Message Service.
- **Step 4:** Login to RateManager and perform IBRU database updates.

NOTE: *Updates can be performed manually, if desired. Manual updates are performed directly in SQL Server.*

This procedure takes RateManager and the corresponding IBFA from 4.0 or later to release 4.6.1.

STEP 1 – SHUT DOWN THE INSBRIDGE COMPONENT SERVICES (COM +)

The Insbridge Com + services need to be shut down prior to the installation. Insbridge Com + uses files that need to be updated. If Insbridge Com + is running, these files may not be updated. If the Insbridge Com + services are running, you will receive a message that the system will need to be rebooted after the installation. Rebooting may not allow for file updates to be performed. To assure that all files are properly updated, please shut down the Insbridge Com + services.

On the machine where Insbridge is installed, shut down the 3 Insbridge Com + services.

- Insbridge Com+ Administrator 3.5
- Insbridge Com+ SoftRater Engine
- Insbridge Com+ SoftRater Library

Failure to Shut Down Com + Services

Failure to shut down Com + Services may result in a configured identity error message when accessing RateManager. To correct, enter the server where the IBRU System was installed. Run the IBRU executable to remove. Shut down the Com + services. Rerun the IBRU executable again. Enter Com + and verify the Identity of each of the Insbridge Com + Services is the Insbridge user. The Identity can be found on Properties->Identity.

1. Click **Start→Administrative Tools→Component Services**.
2. Expand the **Component Services** option under console Root.
3. Expand **Computers→My Computer→COM+ Applications**.
4. Select each Insbridge **COM+ library** and right click.

5. Select **Shut down**.

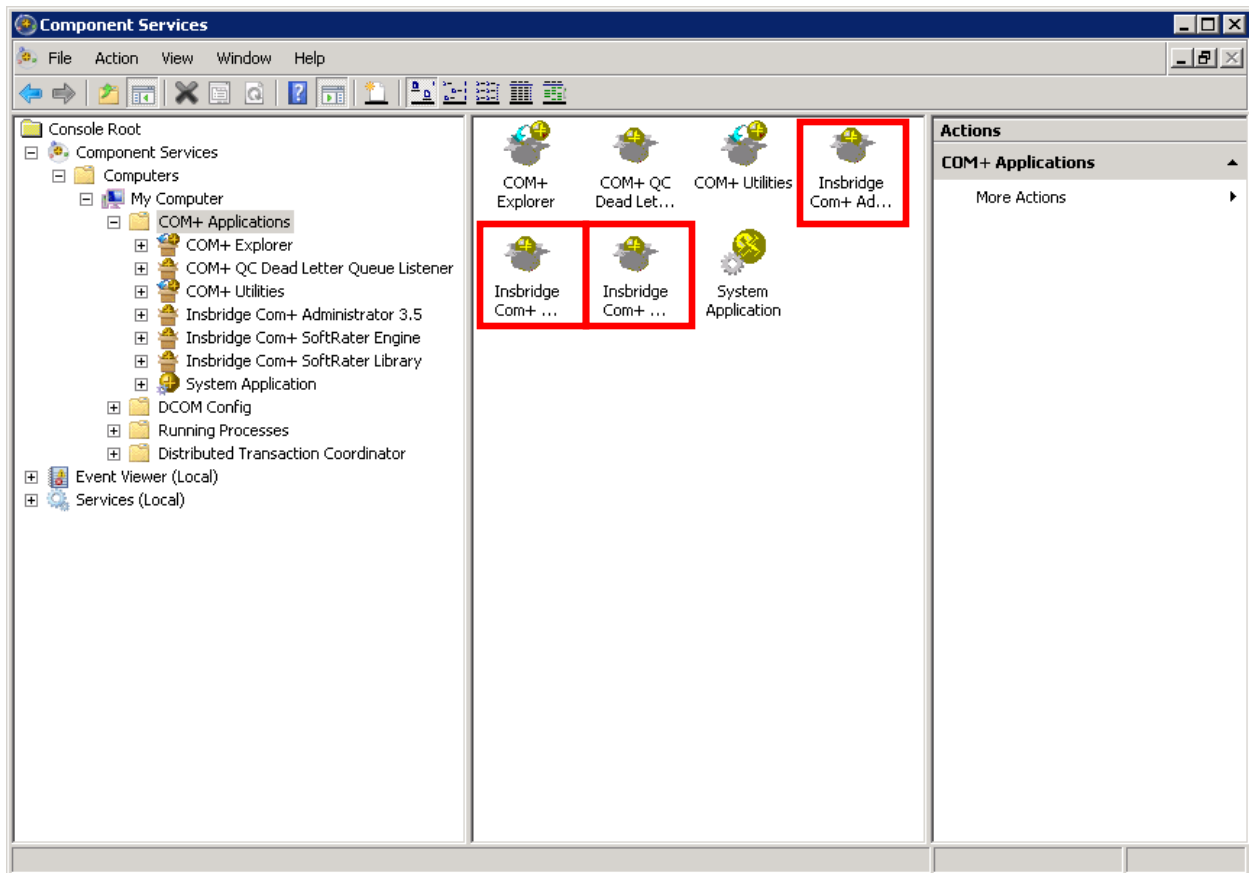


Figure 1 Component Services

NOTE: The Insbridge Com plus services will be started when users access the system.

STEP 2 – RUNNING THE IBRU APPLICATION

An update to the IBRU system is run from the **Oracle Insurance – Insbridge Rating and Underwriting.exe**. Unzip the IBRU folder on the machine where the IBRU system (IBFA and RateManager) is currently installed.

1. Begin with the **Oracle Insurance - Insbridge Rating and Underwriting Install file**.
2. Open the Oracle Insurance – Insbridge Rating and Underwriting file. A Welcome screen is displayed.

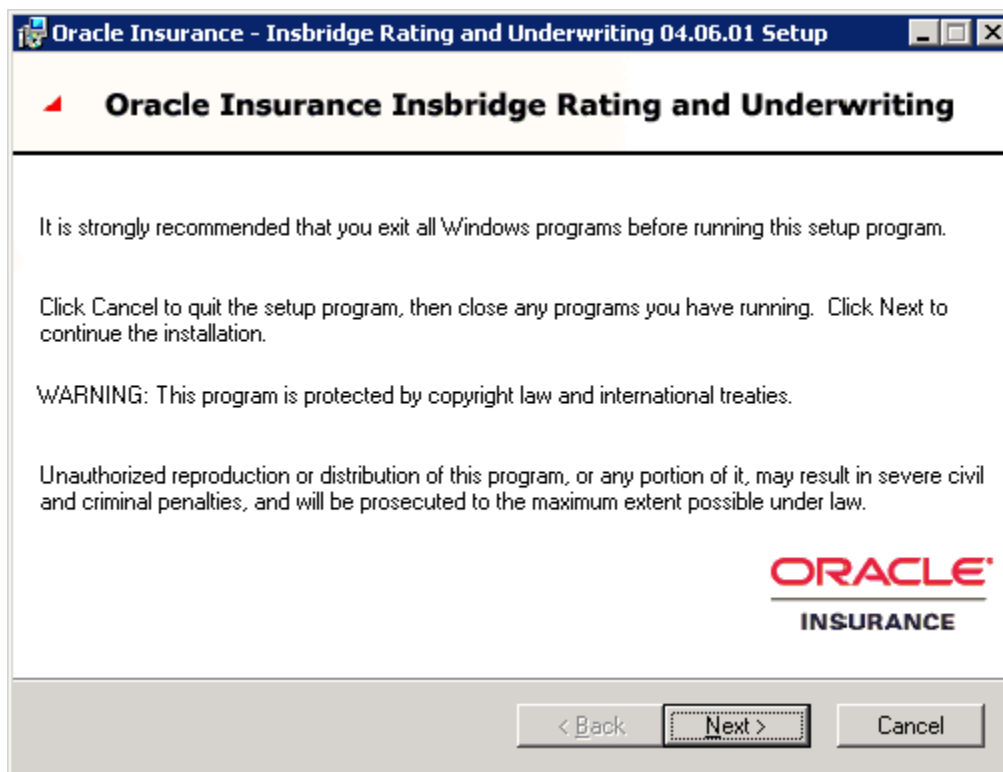


Figure 2 Installing Insbridge

3. Click on **Next** to continue.

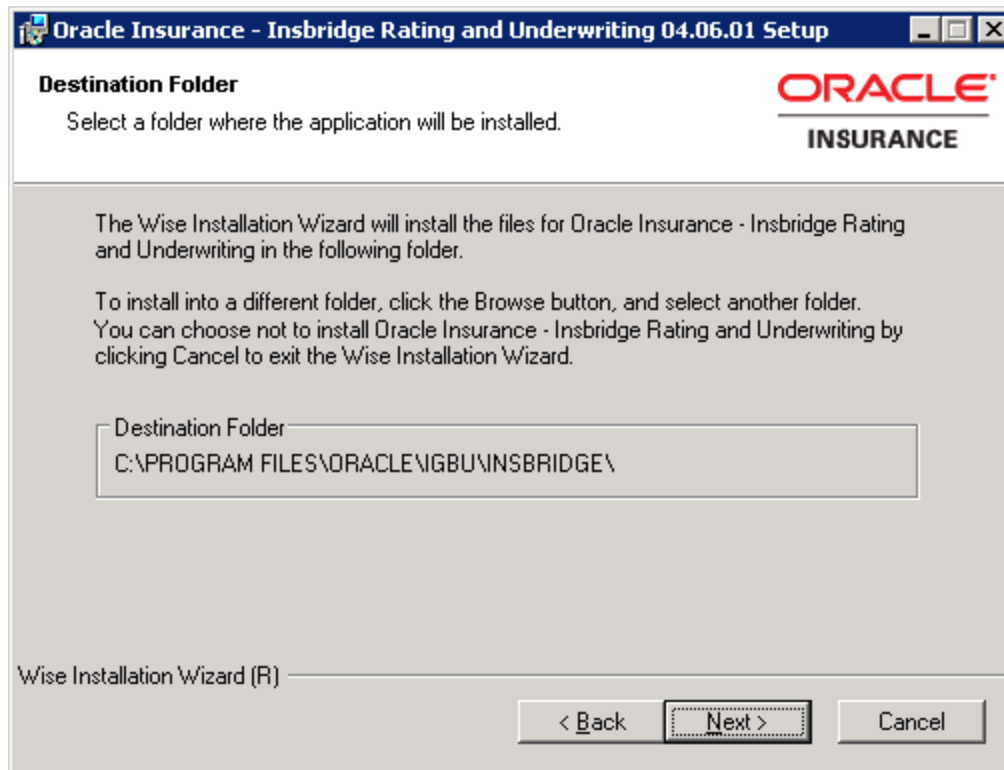


Figure 3 Destination Location for Update

4. The destination path is displayed next. This is an information only screen. No changes will be allowed. Click **Next**.

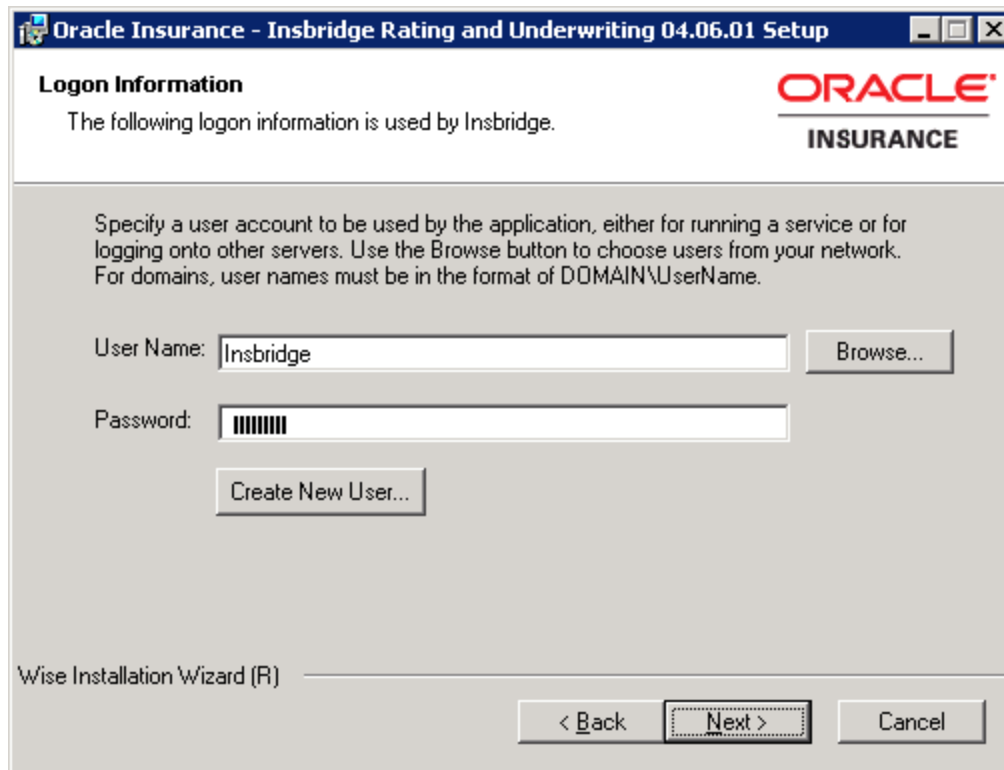


Figure 4 Entering User Information for Insbridge

5. The next screen is the Logon Information screen. Please use the Insbridge user account information that you set up for the initial installation. Click **Next** to continue.

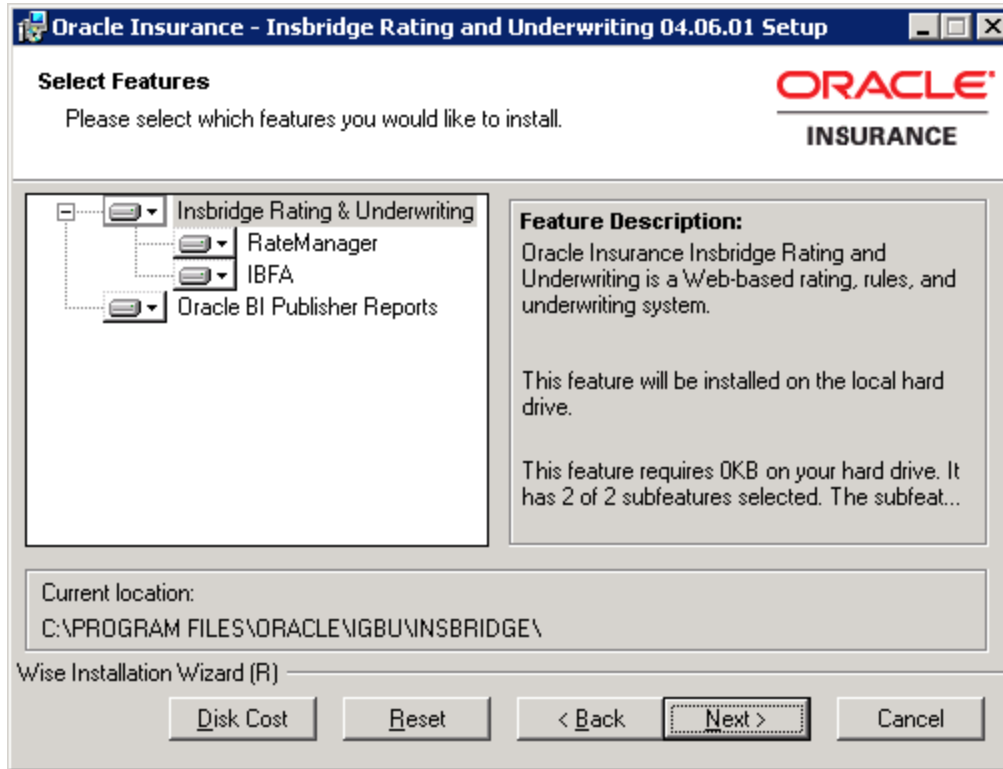


Figure 5 Selecting Features to Install

- The next screen lists the applications to be installed. To expand the options and view details, click on the downward arrow. All features are checked for installation. RateManager is the only one that you will be allowed to not install. Click **Next**.

Options are:

- **Insbridge Rating and Underwriting:**
 - The default option is: Entire feature will be installed on local hard drive.
 - You will not be able to opt out of this selection.
- **RateManager:**
 - The default option is: Entire feature will be installed on local hard drive.
 - You will be able to opt out of this option. Select Entire Feature will be unavailable. RateManager will not be installed.

NOTE: Do not install this option for SoftRater for Windows (SoftRater Node) updates.

- **IBFA:**
 - The default option is: Entire feature will be installed on local hard drive.
 - You will not be able to opt out of this selection.
- **Oracle BI Publisher:**
 - The default option is: Entire feature will be installed on local hard drive.
 - You will not be able to opt out of this selection.

This option does not install the OBI Publisher. Only the templates required by the IBRU application will be installed on local hard drive.

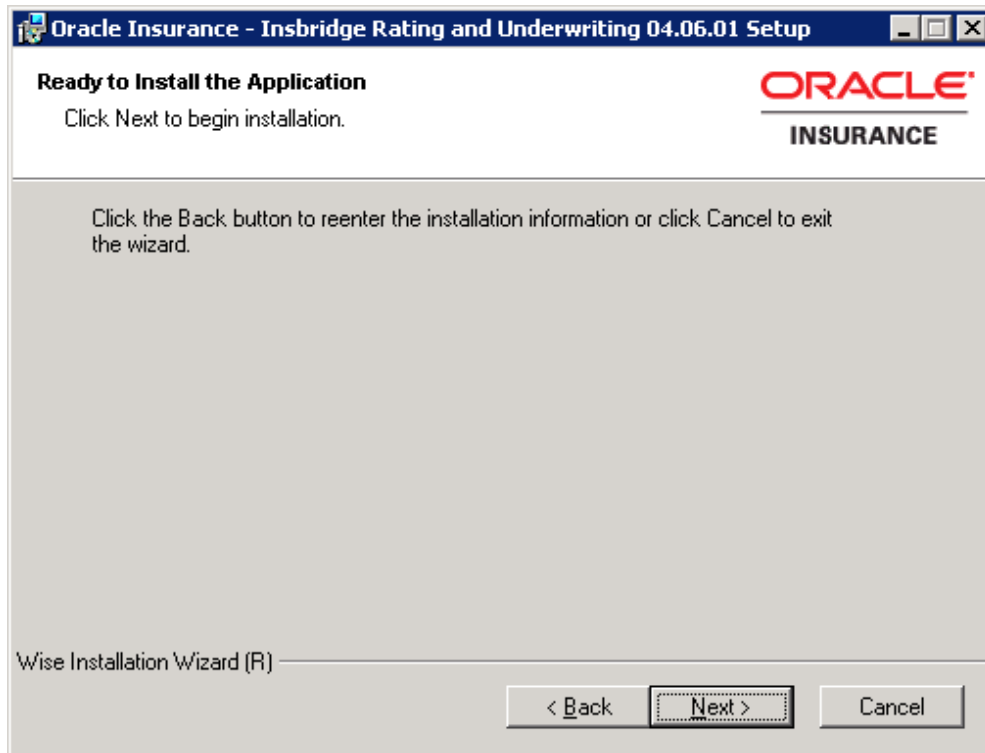
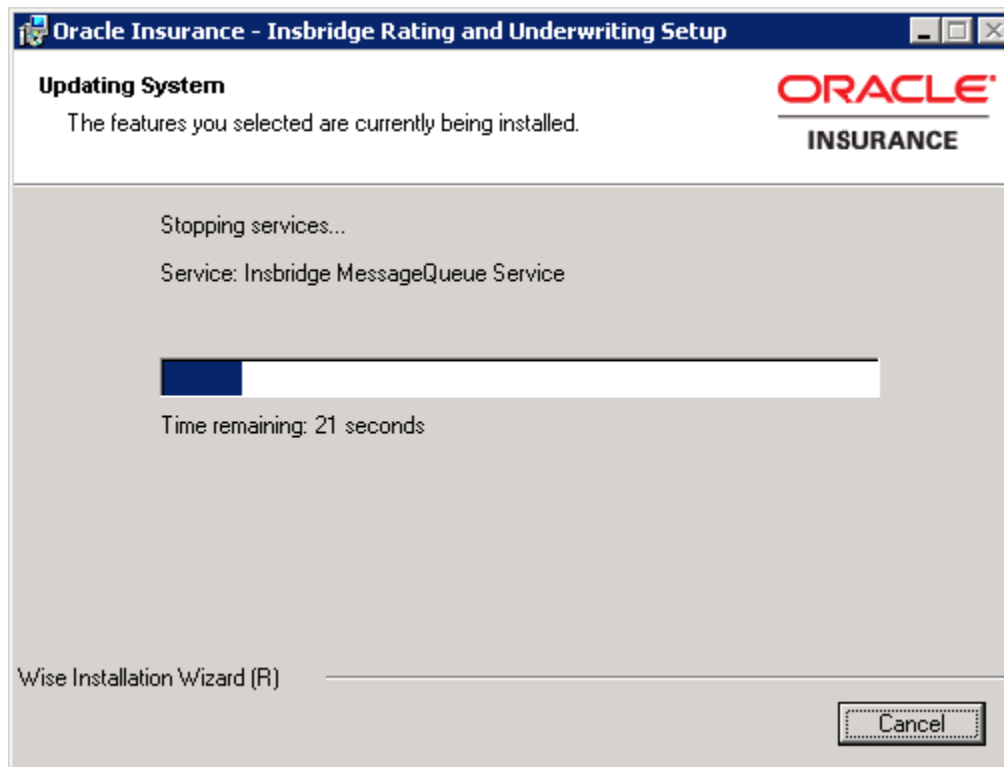


Figure 6 Ready to Install

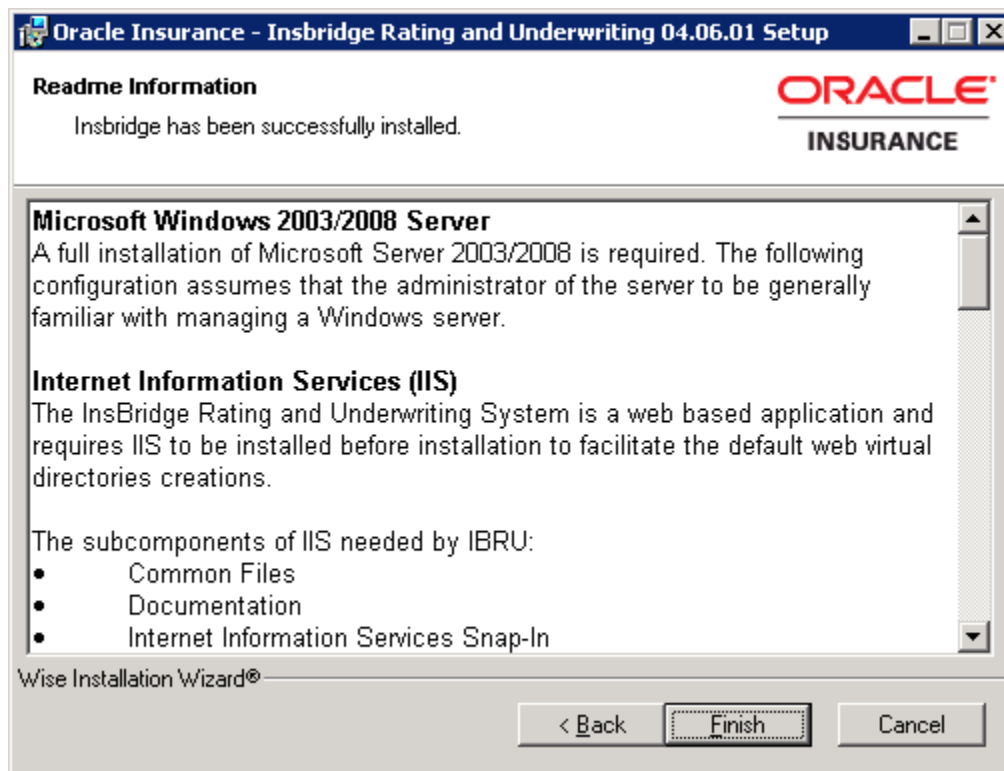
7. A Ready to Install screen is displayed. If you are ready, click **Next**. Otherwise click Back to check the options you want to install. A progress screen displays your progress.



NOTE: If you receive a message that the system will need to be rebooted after the installation, **STOP THE INSTALLATION**. This message means that the Insbridge Com + services are running. If you get this message:

1. Stop the Installation.
 2. Shut down the Insbridge Com + services.
 3. Start the Installation over.
-

8. When complete, a ReadMe Information screen is displayed.



9. Click **Finish** to finish the installation. The installation should complete successfully.

NOTE: Insbridge Message Services also will be stopped during the update.

STEP 3 – STARTING INSBRIDGE SERVICES

It is also recommended that you start the Insbridge Task Manager as well. The Insbridge Task Manager is a task queue that lists the tasks that are scheduled to be performed as well as the last time the task was run and the status.

Insbridge Message Service

The Insbridge Message Service is a Message Queue Listener that will route all batched messages to an assembly (process) for execution. These processes may take resources and time to execute. Please consult with you system admin before configuring the number of listeners per process.

Message Process

Batch Rating

If you see this message, you have not requested a listing from the selected spoke client. Clicking View Messages will provide you with a list view of the first in - first out messages that are waiting to execute.

Insbridge Task Manager

The Insbridge Task Manager gives you the ability to execute daily, weekly, hourly, or by the minute.

(This process may take a while to execute)

TASK	LAST RUN-DATE	START-TIME	STATUS
------	---------------	------------	--------

Figure 7 Insbridge Services Screen

1. In **IBFA**, navigate to the **Services** page.
2. Next to Insbridge Message Service, click **Start**. After a few seconds, the buttons will refresh to indicate that the service is started.
3. Next to Insbridge Task Manager, click **Start**. After a few seconds, the buttons will refresh to indicate that the service is started.

STEP 4 – UPDATING DATABASES

Database updates can be performed in RateManager for the IBRM and IB_Client databases. This is the recommended way to update these databases. The SoftRater database need to be updated manually on the machine where it is located.

To update the RM and IB_Client databases, log into RateManager.

NOTE: If you need to go from an older version, such as 3.9, you will have to enter RateManager and run the IBRM and IB_CLIENT update scripts in sequential order from there. You must be a DB Owner to run the update scripts in RateManager.

NOTE: SoftRater update scripts must be run manually. See Manual Updates to the IBRU Databases for more information.

Updating Databases in RateManager

The URL for RateManager will be <http://INSTALLATIONSERVERNAME/RM>. Where Installation server is the server where RateManager was installed. This places you on the RateManager login screen.

If you log into RateManager and Tools is the only option, you must perform a database update.

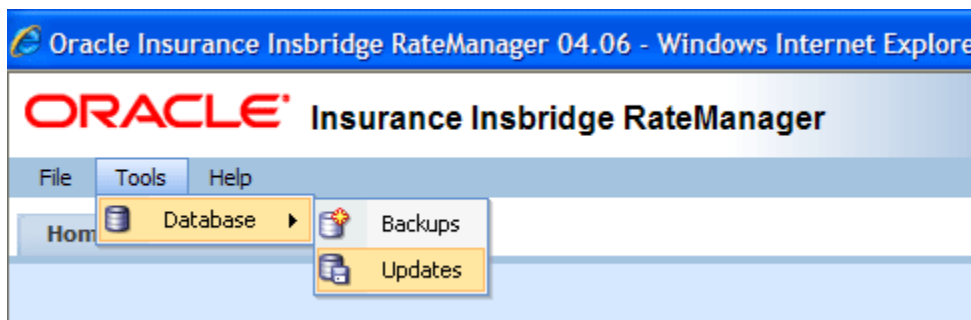


Figure 8 Tool Mandatory Update

1. Enter your username and password.
2. Navigate to the **Tools→Database→Updates**.

On the DB Updates screen, the current version is highlighted and the status is *Current*. The updates below the current version are grayed out. These updates cannot be run again. You will receive an error message if you attempt to run a lower version update. Any version update above the current version will also be grayed out but will be available for executing.

Updates have to be installed sequentially, meaning if you are on Version 03.13, you must run the 04.00 update, the 04.01 update and finally the 04.06.01 update. If you attempt to run an update that is more than one level above the current version, you will receive an error message.

3. The **Updates** tab is displayed. Select the database you want to view from the **Show updates for** drop down. The database updates for your selection are listed. The last column, the **Status** column, shows you which update is the **Current** one installed.

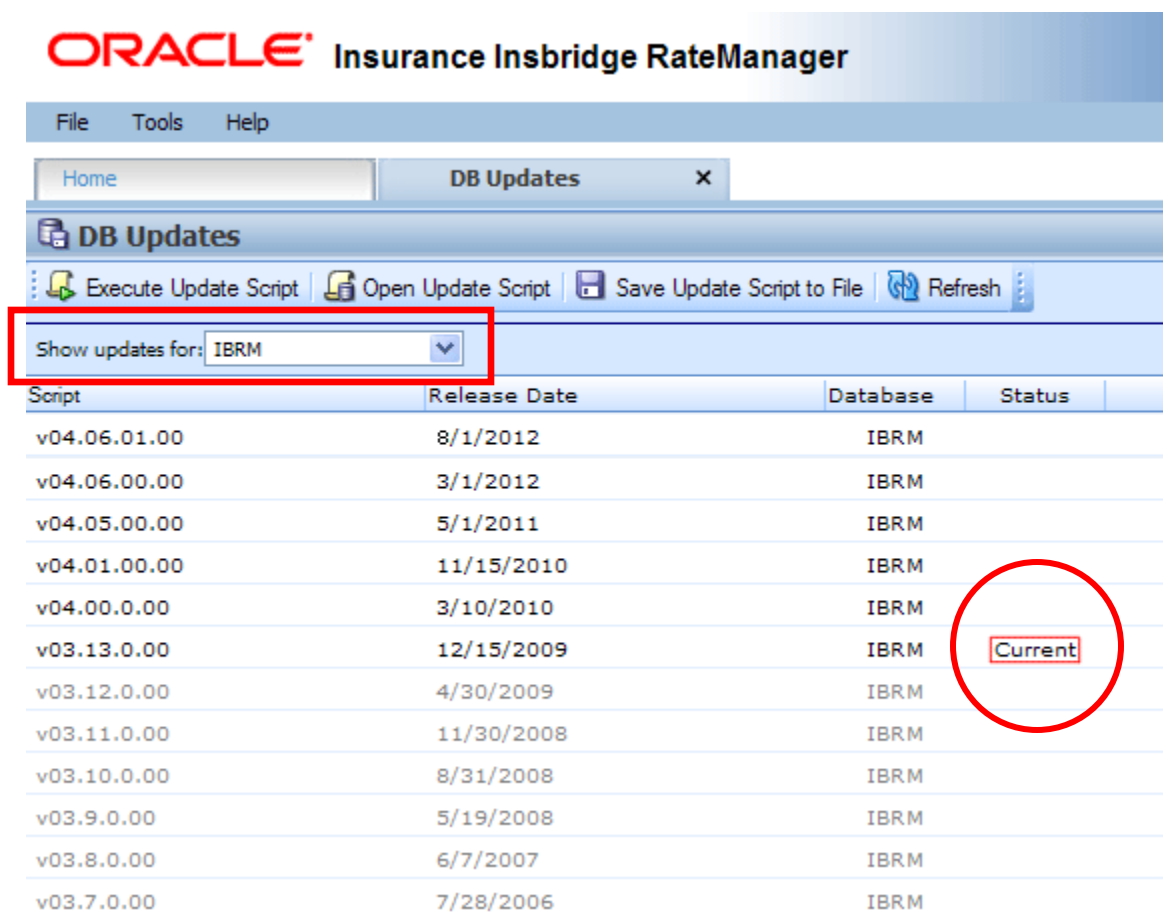


Figure 9 Available Updates

4. There are two ways to execute an update:
 - a. **Directly in RateManager**
 - b. **In SQL Server**

Directly in RateManager

This is recommended way to update a database. It is recommended that you start by selecting the update showing Current. This assures that the database showing as Current has all possible updates.

1. Highlight the update you want to run.
2. Click **EXECUTE UPDATE SCRIPT**. A warning message is displayed.
3. Click **OK** to run the update or **Cancel** to return to the previous screen.

4. Run all script in consecutive order until the 04.06.01 script is showing as current.
5. Do this for both the IBRM database and the IB_CLIENT database.

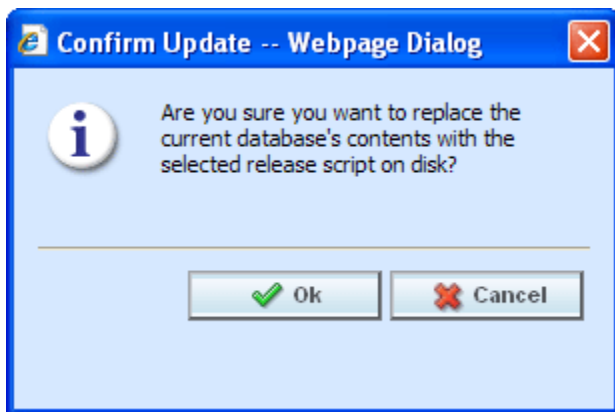


Figure 10 Updating Scripts in RateManager

6. Click File→Reload to refresh the system

In SQL Server

This method should be performed by a database administrator. No warning message will be displayed if you execute scripts in the wrong order. You must know the name of the databases you are updating. Please see **Manual Updates to the IBRU Database**.

After you perform the database updates, to view all menu options, click File→Reload.

Updating a SoftRater for Windows Database

SoftRater for Windows utilizes a SQL Server database and requires that an update script be run against the SQL Server database if the IBRU release is 4.5.1 or previous.

The SQL database update file is packaged in the install, located in the Databases→SQL→SoftRater - IBSR→Update folder. The file name is usp_IBSR_v04.05.01.bak. Run the script against the database to update. No other steps are needed.

This update must be run manually and is not available from RateManager like the IBRM or IB_CLIENT databases.

If you updating from release 4.5.1, you do not need to run the update script.

OPTIONAL STEPS

There are two optional steps that can be performed for a RateManager/IBFA update.

- **Step 1:** Migrate Files
- **Step 2:** Update Preferences

These steps may not be required, depending upon the actions you want to take.

STEP 1 – MIGRATE WORK FILES

This feature migrates work files from previous versions of RateManger to release 4.6.1. Work files are rating, pricing, mapping and template files used in various areas of RateManager such as Impact Analysis, Library and Testing. Migrating files allows users to access work files that were available in previous releases of RateManager. If you do not migrate work files from previous versions, users will not have access to them.

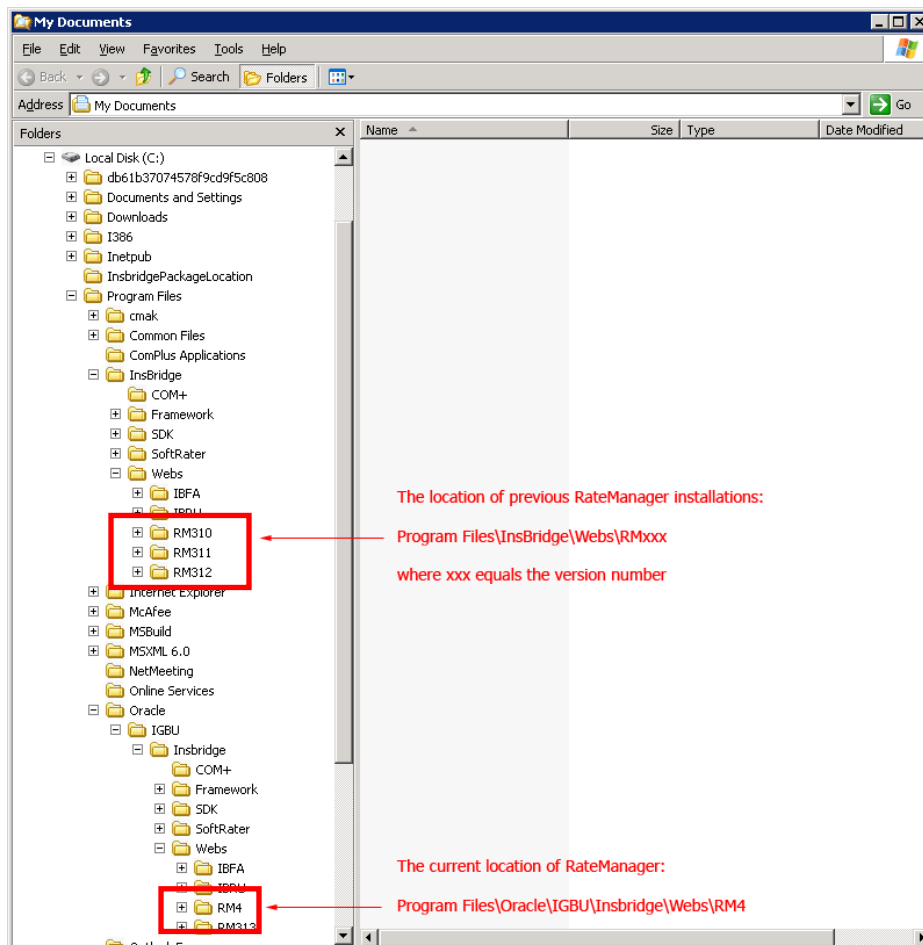


Figure 11 Location of WorkFiles

Work files should be migrated after the initial upgrade has been run, but can be run at any time after.

Prior to migrating files, please create backup copies of the files to be migrated. This will require access to the server were RateManager has been installed.

File Location:

The location of the files to be migrated and the exact file name will depend upon what version of RateManager you want to migrate. There are two possible locations.

For Release 3.12 and earlier:

- **File Name:** WorkFiles
- **Location:** \Program Files\InsBridge\Webs\RMxxx\WorkFiles

Where xxx is the version number, i.e. 310, 311, 312

For Release 3.13:

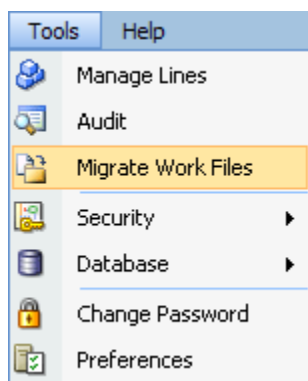
- **File Name:** Workfiles
- **Location:** \Program Files\Oracle\IGBU\Insbridge\Webs\RM313\Workfiles

Copy all work files for every version to be migrated and store in a safe location. In the unlikely event that an error with the migration occurs, you will have backup files that you can place directly in the RateManager (RM4) Workfiles location or restore to the previous version.

Performing the Migration in RateManager

This migration process will move rating, pricing, mapping and template files from a previous version of RateManager to the current RateManager version. You can select the oldest version that you want to migrate. For example, if you have been running RateManager from version 3.10, you will have the option to select to migrate from version 3.10 and forward. You also can choose to migrate from version 3.12.

1. Select **Tools→Migrate Work Files**. A separate screen will be displayed.



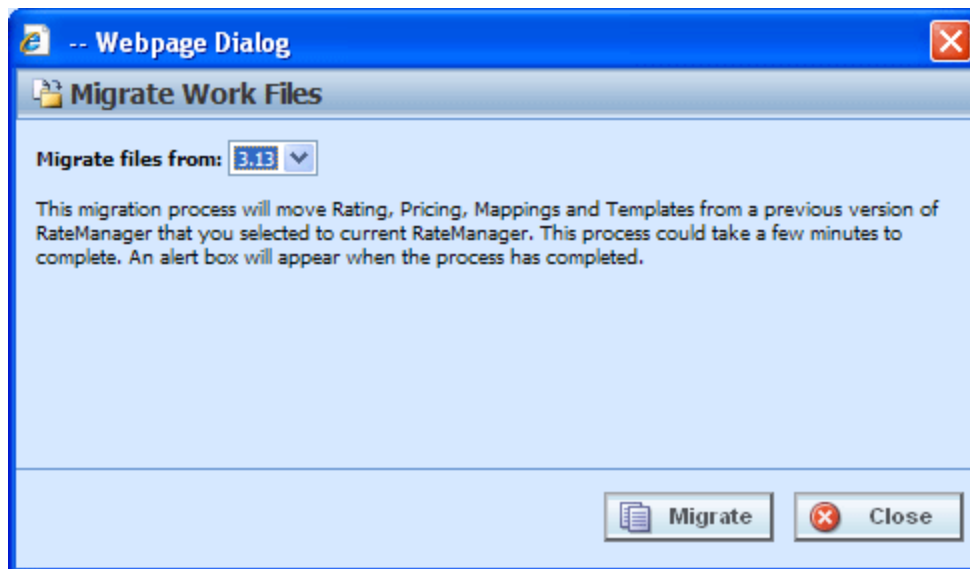


Figure 12 Migrating Work Files

2. RateManager will determine the possible versions to migrate. Select the oldest version you want to migrate. You do not have to select the oldest version available. You can select a newer version. Only work files from the selected version and newer will be migrated. Any version prior to the selected version will not have work files migrated.
3. Click **Migrate**.

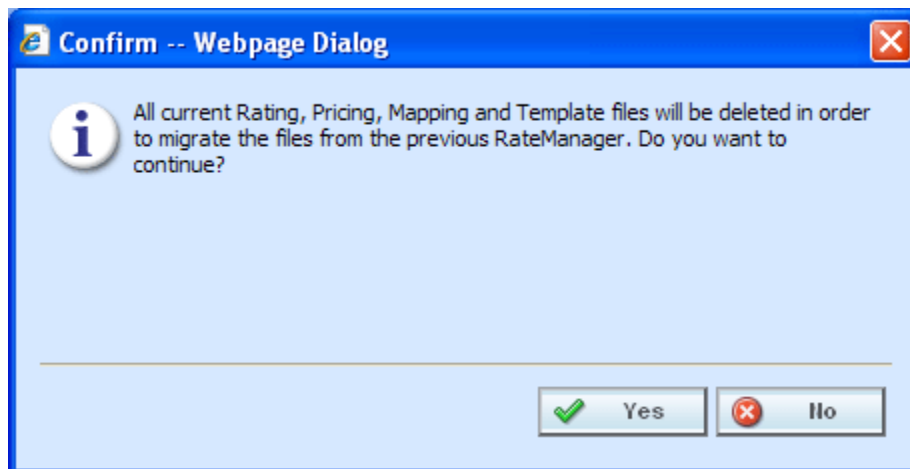


Figure 13 Confirming a Migration

4. Say **Yes** to migrate. If you are unsure about the action you want to take, click No to stop the migration process.

The migration will begin. This process could take a few minutes to complete. When all files have been migrated, an information notice will be displayed.

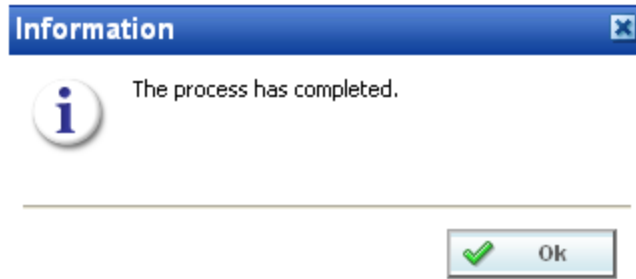


Figure 14 Successful Migration

- Say OK to close the screen.

Verifying Migrated Files in RateManager

Migrated files are available in the same areas.

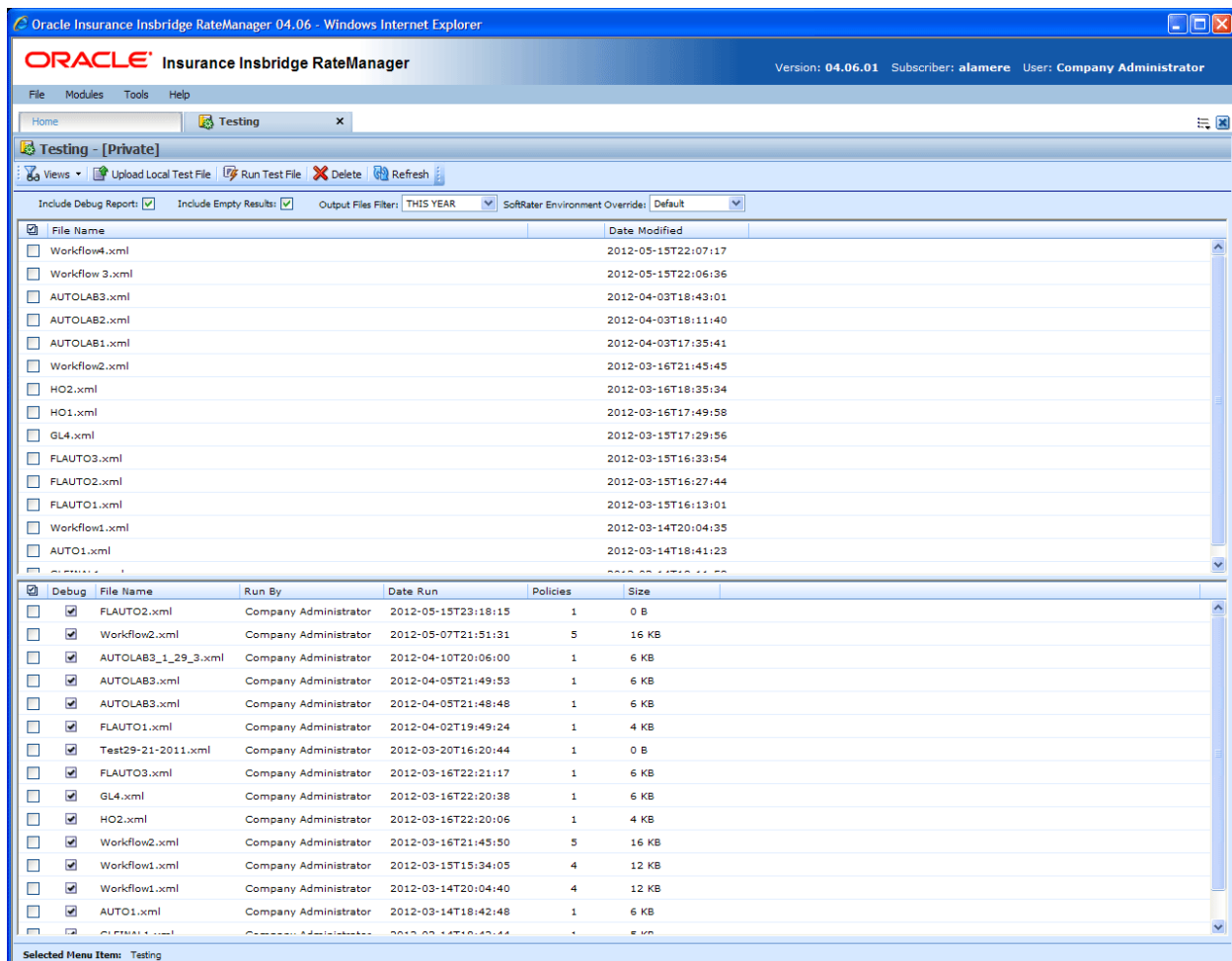


Figure 15 Verifying File Migration in RateManager

To verify that work files from a previous version have been migrated, enter an area where these files would be used, such as Impact Analysis or Library.

The tab will refresh with all available files. Your files from previous versions will be listed.

Verifying the File Migration in the Server

Migrated files will be moved from previous releases into the updated RM4 Workfiles location.

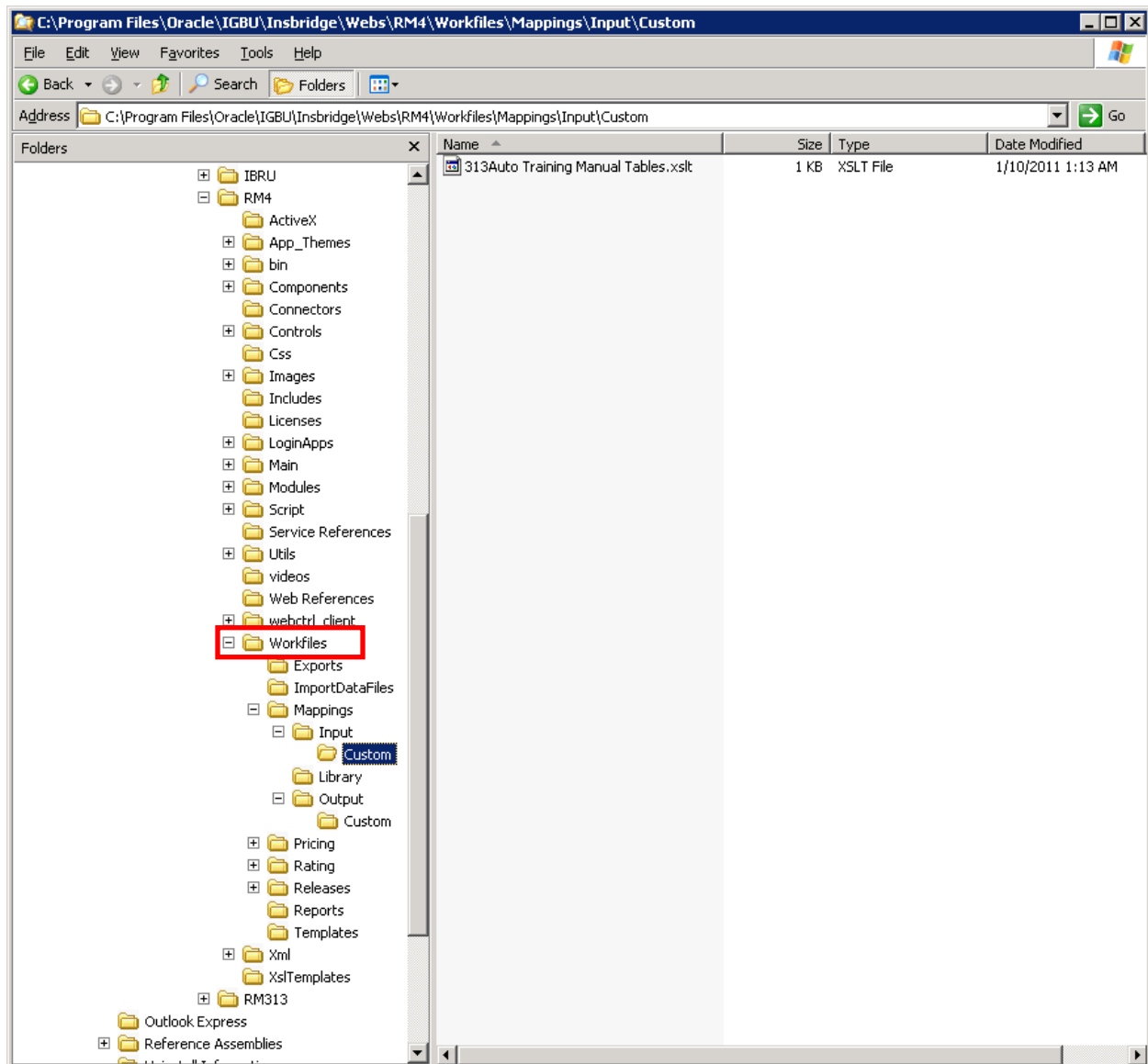


Figure 16 Verifying File Migration at Server Level

You can verify that files have been moved by looking in the `\Program Files\Oracle\IGBU\Insbridge\Webs\RM4\Workfiles` folder.

You also can verify that previous WorkFiles have been removed by looking in the prior WorkFile location on the server.

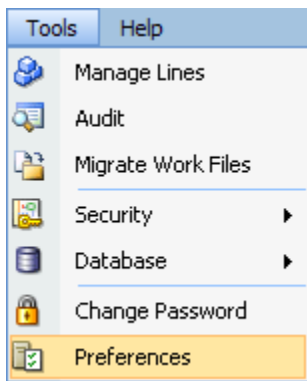
Workfiles only need to be migrated one time.

STEP 2 – UPDATING PREFERENCES

Administrators can edit web settings at any time from the Preferences option in RateManager. Changes will take place after the user sessions have been ended. If web settings are changed while the users are inside the module, the change will not be visible to them. Prior to users accessing RateManager for the first time, it is recommended that Preferences be set.

To Change Settings

1. Select Tools→Preferences.



2. This will open the **Preferences** window. Select **Web Settings**.

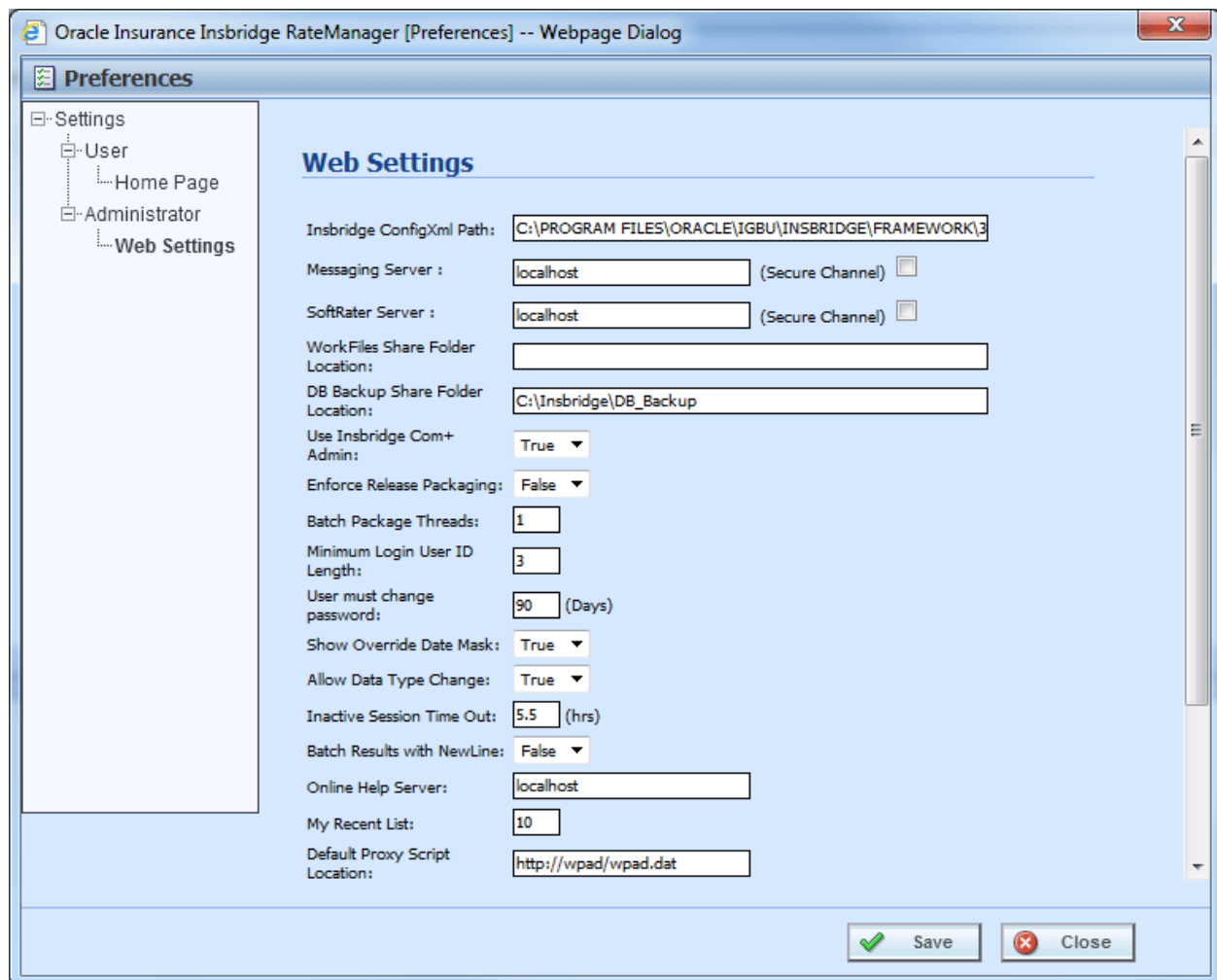


Figure 17 Preferences Settings

3. Make any necessary changes. If you do not know all the settings, you can come back and edit later at a later time. It is recommended that you update the **ONLINE HELP Server** immediately.
4. When you are finished, click **SAVE** to update your settings.

Web Settings

Insbridge ConfigXml Path

This is the path from IBFA. This pathway must match the IBFA path. You may need to change this path if you have changed the path in IBFA. Please contact Insbridge support for further information. It is strongly recommended that you leave the default.

Messaging Server

RateManager is set up to run batches on the same server that RateManager is located on. If you have an especially large batch to run and you want to batch to a different server, you will have to change server locations here. Unless necessary, it is strongly recommended that you leave the default.

SoftRater Server

If you need to rate on another server, you will have to change server locations here. It is strongly recommended that you leave the default.

Backup Share Folder Location

When you make backups of the RateManager database, you can specify the location of the backup file. If the location is local, you will use a local path. If the location is not local, you must be a disk admin to change.

If the database is on a remote server, a share is needed for the backup location. The Insbridge user must have write access to this location as well.

Use Insbridge Com + Admin

This setting must always be true. If there is a conflict, please contact Oracle Insurance support.

Enforce Release Packaging

When set to **False**, a release is not required in order for users to create a SoftRater (full) package. False is the default setting.

If set to **True**, a release is required in order for a SoftRater (full) package to be created. If a user wants to create a SoftRater (full) package in the Program Explorer module, a release must be created in the Releases area first. This release must have the program added to it and be unlocked. When the user creates the SoftRater package in Program Explorer, they will have the option to select the Release they want this package to be placed into. If there is no release, or no release that contains that program and is unlocked, then the user will be able to do RateManager (local) packages only.

Batch Package Threads

RateManager allows you to change how many threads are used. Threading enables a process to finish faster by splitting the process into smaller processes that run quasi-simultaneously. On multiprocessor systems, using multiple threads enables the operating system to assign the threads to different processors.

In addition, the Framework Administrator also enables you to change the administrator email address for each client. When a process fails, an email will be sent to the person who initiated the process, as well as to the administrator email addresses listed for the client of that process.

NOTE: *Before changing the number of threads, you should consult with your system administrator. Setting the number too high can result in poor performance or even a system crash. If you are unsure of how many threads to use, set the number to 1. For single processor systems, Oracle Insurance recommends a maximum of 2 threads.*

Minimum Login User ID Length

This is the minimum number of characters required for a user ID.

User must change password

This where you set the number of days before a user is required to change his/her password. This setting will only be active when you elect to have users change their password on the user setup screen.

Show Override Date Mask

If enabled, a date mask for 'Date' data types will be displayed when importing a table. If not enabled, this field will not be visible.

Allow Data Type Change

The type of data associated with a parameter. RateManager supports three (decimal, integer and string) data types for variables and inputs and a fourth (date) for inputs and result variables only.

Setting this option to True will allow RateManager users change the data type of a variable or input. Setting this option to False will not allow users to change data types.

Inactive Session Time Out

This is the amount of time that a user sits inactive before being automatically logged out of the system.

Batch Results with New Line

Allows batch results to go to a new line instead of forming one continuous string. A True setting will place a carriage return between result files. A False setting will result in one continuous string without a break.

Online Help Server

Online help is installed with RateManager. This setting should be the server name where RateManager currently resides. Either a server name or an IP address can be entered here. If needed, you can change the name of the server. For example, if the machine name is not the same as the host name, you may need to change the name in order for online help to function.

Change Control

If change control is on, it will be mandatory for users to enter a change control entry and justification to any element or program when it is revisioned. If change control is off, the option will not be presented.

UPGRADING TO A NEW MACHINE

If you are upgrading RateManager/IBFA from any previous release **AND** moving to a different machine you will need to perform these steps. These steps will allow any packages loaded to the old machine to be loaded and used by the new machine. If you do not perform these steps, old packages may not rate properly or even be available to users.

NOTE: *These steps need to be done **only** when you are migrating your RateManager/IBFA instance from an old machine to a new machine.*

- **Step 1:** Install RateManager/IBFA
- **Step 2:** Export the Insbridge Registry Key from the old Machine
- **Step 3:** Import the registry key from the old machine to the new machine
- **Step 4:** Copy the Insbridge XML file from the old machine.
- **Step 5:** Paste the Insbridge XML file in the new machine.
- **Step 6:** Finish the Installation
- **Step 7:** Run the Oracle Client – Optional
- **Step 8:** Manually Migrate Workfiles

After these steps, your RateManager/IBFA should be ready for use.

Step 1: Install RateManager/IBFA

A RateManager/IBFA upgrade that involves moving to a new machine is considered a new install. Please follow the instructions for installing RateManager/IBFA in the *RateManager Installation Guide*.

STOP At Step 6 – Configuring Insbridge Framework Administrator.

Do not create a subscriber or environments.

Step 2: Export the Insbridge Registry Key

The Insbridge registry key located in HKEY_LOCAL_MACHINE→SOFTWARE→Insbridge is used to store all information for proper encryption of the SoftRater Packages (SRPs).

When RateManager/IBFA is re-installed on a new server, a new registry key will be created. The new registry key will not match the registry key associated with any packages that have been created on the old machine. In order to load packages to the new machine, you will need to restore the previous registry key.

1. On the old machine, enter Registry Editor. Run→regedt32.
2. Select the Insbridge key: HKEY_LOCAL_MACHINE→SOFTWARE→Insbridge.
3. Right click and select **Export**.
4. Select a storage location for the file and **Save**.
5. Close out of Registry Editor.

Step 3: Importing the Registry Key

The old registry key needs to be imported in to the new machine.

1. **Save the Exported Registry Key** to a location you can easily access.
2. **Double click the Exported Registry Key**. The key will be loaded.
3. Store the Exported Registry Key in a safe location.

Step 4: Copy the Insbridge.XML File

You can copy and paste the Insbridge XML file from the old machine to the new machine. This will allow the environments and subscriber created in the old machine to be populated in the new machine.

NOTE: *If you want to re-enter or re-create your environments, you can skip Step 4 and Step 5. After you import the registry key, you will need to continue the RateManager/IBFA installation at Step 6 – Configuring Insbridge Framework Administrator.*

File Location:

The location of the Insbridge.XML file to be copied will depend upon what version of RateManager the old machine is running. There are two possible locations.

For Release 3.12 and earlier:

- **File Name:** InsBridge.XML
- **Location:** D:\ProgramFiles\InsBridge\Framework\2.0.2\InsBridge.Xml.
OR C:\Program Files\Oracle\Insbridge\Framework\2.0.0\Insbridge.Xml

For Release 3.13 and later:

- **File Name:** InsBridge.XML
- **Location:** C:\Program Files\Oracle\IGBU\Insbridge\Framework\3.5.0\Insbridge.Xml

Copy the Insbridge.XML file to a location you can easily access.

NOTE: *If you are changing databases, you can copy and paste the Insbridge XML file, however you will need to update your environments with the new database information.*

Step 5: Paste the Insbridge.XML File

Before pasting the Insbridge.XML file into the new location, make a copy of the blank Insbridge.XML file and store in a safe location. In the unlikely event that an error occurs, you will have a backup file that you can use.

The Insbridge.XML file in the New Machine is located:

C:\Program Files\Oracle\IGBU\Insbridge\Framework\3.5.0\Insbridge.Xml

1. Make a copy of the blank Insbridge.XML file on the new machine and store in a safe location.
2. Paste the Insbridge.XML file from the old machine in to the new machine in the same location.
3. Open an Internet Explorer web browser either remotely on the local IBRU web server and browse to IBFA location on the new machine: <http://SERVERNAME/ibfa/>
4. Subscribers and Environments should be available in IBFA on the new machine. Verify your entries.

Step 6: Complete the RateManager/IBFA Installation

Complete the instructions for installing RateManager/IBFA. Please see the *RateManager Installation Guide* for detailed instructions.

Continue at Step 7 – Verifying the Component Services. You will need to complete the rest of the installation.

Step 7: Run the Oracle Client – Optional

This step is optional. You will need to run the Oracle Client if you are utilizing a Java SoftRater, i.e. SoftRater for WebLogic, SoftRater for WebSphere or SoftRater for JBoss. The Oracle Client is located in the Oracle Cloud Delivery package. For instructions on running the Oracle Client, please see the corresponding SoftRater Installation Guide, i.e. *SoftRater for WebLogic Installation Guide*, *SoftRater for WebSphere Installation Guide* or *SoftRater for JBoss Installation Guide*.

If you are running 64-bit, please make sure you use the 64-bit client.

Step 8: Manually Migrate Workfiles

After the installation has been completed, you will need to migrate workfiles. Follow the instructions for Manually Migrating Workfiles, see page 24.

The RateManager system is ready for use.

NOTE: *If users experience any difficulties with migrated packages, please verify that the database usernames and passwords are entered for any SoftRater environment.*

IMPORTING REGISTRY KEY AFTER INSTALLATION

The registry key can be imported at any time after the initial RateManager/IBFA install and subscriber creation. If the registry key needs to be imported after you have completed the installation and set up your SoftRater environments, you will need to re-enter Database Username and Passwords for the SoftRater Environments.

This procedure is only required if you have configured your environments. If you have not configured your environments, you should not have to re-enter usernames and passwords for your environments.

Prior to starting, IBFA should be up and running on the new machine.

Step 1: Export the Insbridge Registry Key

The Insbridge registry key located in HKEY_LOCAL_MACHINE→SOFTWARE→Insbridge is used to store all information for proper encryption of the SoftRater Packages (SRPs).

When RateManager/IBFA is re-installed on a new server, a new registry key will be created. The new registry key will not match the registry key associated with any packages that have been created on the old machine. In order to load packages to the new machine, you will need to restore the previous registry key.

1. On the old machine, enter Registry Editor. Run→regedt32.
2. Select the Insbridge key: HKEY_LOCAL_MACHINE→SOFTWARE→Insbridge.
3. Right click and select **Export**.
4. Select a storage location for the file and **Save**.
5. Close out of Registry Editor.

Step 2: Importing the Registry Key

The old registry key needs to be imported in to the new machine.

1. **Save the Exported Registry Key** to a location you can easily access.
2. **Double click the Exported Registry Key**. The key will be loaded.
3. Store the Exported Registry Key in a safe location.

Step 3: Re-enter Username and Password

1. Enter the new IBFA instance.

2. Browse to **SoftRater→Explorer→Subscriber name**.
3. Select the **Environments** link under the Configuration header on the left hand side.
4. You will notice that the database username and password entries will be blank. Please re-enter the username and password. Test connections for any SoftRater environments.
5. Save your entries and close out of environments.

Upgrading the Database Machine

If you are upgrading your database machine, the new database information will need to be entered in IBFA→Environments.

MANUAL UPDATES TO THE IBRU DATABASES

The preferred method of updating the IBRM and IB_CLIENT databases is to go into RateManager. If the administrator has DB User privileges and is the DB Owner of the database as well as the disk administrator, database updates can be done on the **Tools→Database→Updates** tab. If these privileges are not in place, an error message will be displayed. See Step 4 – Updating Databases for more information.

NOTE: *If you need to go from an older version, such as 03.13, it is strongly recommended that you enter RateManager and run the 04.00, 04.01, 04.05, 04.06, and 04.06.01 update scripts successively from there. Failure to run scripts in order may result in errors.*

To manually update a SQL Server database, you will be required to save off each update and run them in sequential order in SQL Server. A DBA or a person with the proper permissions will need to apply the database updates in SQL Server using Query Analyzer.

1. First, you will need to get the scripts you need from RateManager.
2. In RateManager, highlight the update you need. Begin with the version that is listed as “current”. If you are going from a much lower version of RateManager, you will have to save multiple files.
3. Click **Save Update Script to File**. Your computer's dialog box is displayed. **Save** the file to a location of your choice. For IBRM scripts, it is recommended that you rename the file to `usp_IBRM_R(version number).sql`. For example the Release 4.6.1 update would be: `usp_IBRM_R04.06.01.sql`. For IB_CLIENT scripts, it is recommended that you rename the file to `usp_IB_CLIENT_R0(version number).sql`. For example the Release 4.6.1 update would be: `usp_IB_CLIENT_R04.06.01.sql`.
4. Verify that you have saved all the necessary scripts from “current” to release 04.06.01. You must save off update scripts for both the IBRM and the IB_CLIENT databases.
5. Next, enter SQL Server.

NOTE: *If you do not have database permissions, you will not be able to perform the following database queries.*

NOTE: *When using Database Engine Query, the SQL scripts must run on each individual database.*

6. Begin with the current version of either the IBRM database or the IB_CLIENT database. Open **Query Analyzer**.
7. **Open up the DB script updates** from the download file. You can open in any program you want, such as Notepad. Begin with the “current” script. For example, if you are going from release 03.13 to 04.06.01, 3.13 should be “current”. Open 3.13 first.

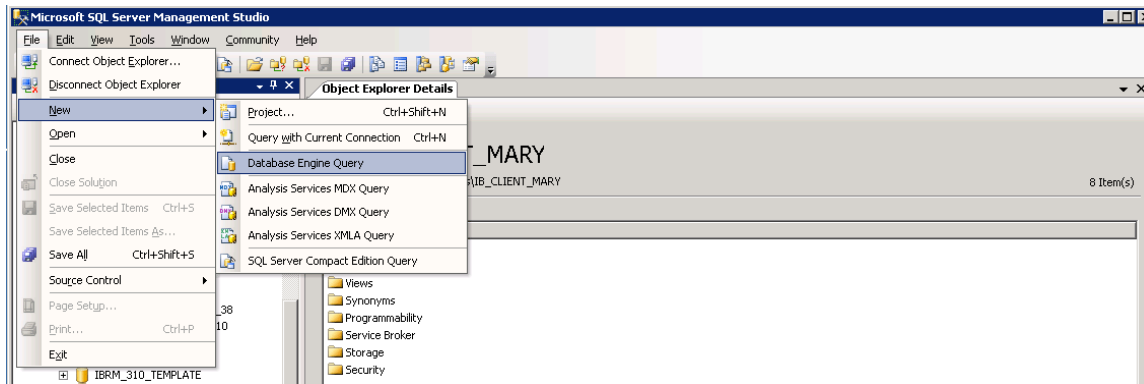


Figure 18 Updating Database

8. Select the database you want to update. In SQL Server Management Studio, create a new Database Engine Query, **File→New→Database Engine Query**.
9. Copy the first update from Notepad and paste onto the query screen.
10. Click **Execute**. The script will execute. Any messages will be displayed in the lower portion of the screen. You must run the updates in sequential order. Run each update until you run the 04.06.01 update.
11. When you have finished updating one database, update the remaining database. Make sure you do both the IBRM and IB_CLIENT databases.
12. After the scripts have been run, return to RateManager. Click **Refresh Listing**. The status should show current and the full RateManager menu should be displayed. The updates are now properly applied and users can log back in to the system.

NOTE: You can view the update script in RateManager. Select the update you want to view. Click **Open Update Script**. The update script will be displayed in a separate screen.

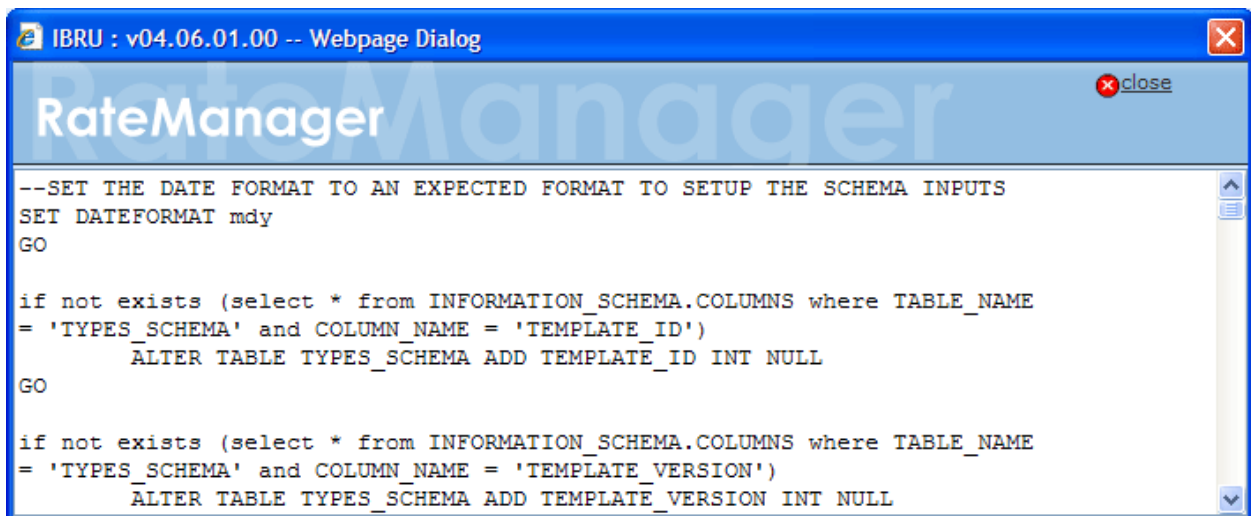


Figure 19 Script Viewer

Updating a SoftRater for Windows Database

SoftRater for Windows utilizes a SQL Server database and requires that an update script be run against the SQL Server database if the IBRU release is 4.5.1 or previous.

The SQL database update file is packaged in the install, located in the Databases→SQL→SoftRater - IBSR→Update folder. The file name is usp_IBSR_v04.05.01.bak. Run the script against the database to update. No other steps are needed.

This update must be run manually and is not available from RateManager like the IBRM or IB_CLIENT databases.

If you updating from release 4.5.1, you do not need to run the update script.

UPGRADING SOFTRATER FOR JAVA

How you upgrade SoftRater for Java will depend upon what IBRU release you are starting from:

- Upgrading from Oracle Insurance Insbridge Rating and Underwriting Release 3.13.4 or previous to release 4.6.1 requires that the previous .EAR and config files be removed. The new .EAR file can then be deployed and the new config file must be implemented.
- If you are upgrading from release 3.13.5 or later, you need to redeploy the .EAR file only. You do not need to redeploy the config file.
- You will need to run an update script against the database you are utilizing.
- If you are upgrading from release 3.12 or previous you should check for SOAP changes. Updated WSDL documents will need to be incorporated into any client calling application that communicates with SoftRater. If upgrades are done to the SoftRater for Java engines without updating the calling applications, the calling application will fail.

NOTE: UPGRADE YOUR TEST ENVIRONMENT PRIOR TO PRODUCTION. Validate in test prior to implementing in production.

Steps to Upgrade SoftRater for Java:

Every upgrade requires:

1. **Update the application server.** Please follow the instruction for the release your application server is currently running.
 - For Release 3.13.4 and Prior, delete the .EAR file and config file.
 - For Release 3.13.5 and Later, delete the .EAR file only.
1. **Update the associated database.** All database updates should be performed by your DBA or qualified system administrator. This takes the SoftRater databases to release 4.6.1.

NOTE: *Updates are performed manually on the database server.*

Additional Steps to Upgrade SoftRater for Java:

You will need to run this step if you are currently running release 3.12 or previous and incorporating a calling application:

- Update the WSDL documents.

This will allow your calling application to function in the upgraded SoftRater.

SOFTRATER UPDATES

There are three SoftRater for Java engines:

- SoftRater for WebLogic
- SoftRater for WebSphere
- SoftRater for JBoss

The upgrade procedures to the application are similar and the upgrade procedure for the associated databases is the same.

UPGRADE NOTICE

This notice is for customers currently running a SoftRater for Java engine release 3.12 or previous. This includes:

- **SoftRater for WebLogic**
- **SoftRater for WebSphere**
- **SoftRater for JBoss**

Necessary updates have been made to the SoftRater for Java engines:

- **SoftRater for WebSphere has been updated to SOAP version 1.1.**
- **SoftRater for WebLogic has been updated to SOAP version 1.2.**
- **SoftRater for JBoss has been updated to SOAP version 1.2.**

These changes mean that the WSDLs for the SoftRater for Java engines have been modified. Updated WSDL documents will need to be incorporated into any client calling application that communicates with SoftRater. If upgrades are done to the SoftRater for Java engines without updating the calling applications, the calling application will fail.

Please update a test environment prior to deploying to production. Install the .EAR file in a test environment to obtain the WSDL. Update your calling application and then test again. When testing is complete, you can upgrade your other environments.

NOTE: *Customers running a Windows only environment, without a Java component, will not be affected.*

These updates are for the SoftRater for Java engines only.

UPGRADING WEBLOGIC

SoftRater for WebLogic can be upgraded any time after the IBRU system.

Upgrading from Release 3.13.4 or Previous

This method removes the previous .EAR and config files. The configuration information needs to be re-entered in IBSS and validated in IBFA.

If you are using SQL Server, please see the Preserving Environments for SQL Server Upgrade information. The Preserving Environments for SQL Server Upgrade information allows you to keep your existing environments by editing the config file.

1. Locate the configuration folder used in the previous SoftRater for WebLogic installation. The configuration folder would have been parked in a location on the WebLogic server. For example:
 - In a Windows environment, `C:\Insbridge\config`
 - In a Linux environment, `home/Insbridge/config`

This same folder should be used for the update.

2. Locate the current **Insbridge.net.softraterconfig.xml** file within the configuration folder and make a back-up copy. The configuration information will need to be re-entered in IBSS. The updated config file will not contain this information. This information cannot be directly imported but a copy of the original file may be helpful when re-entering.
3. Enter WebLogic and stop the WebLogic Service.
4. Delete the old IBSS_WL.EAR file in WebLogic.
5. Start the WebLogic Service.
6. Return to the configuration folder and delete the previous config file, the previous .EAR file and the previous .jar file. You can leave the log file.
7. In the configuration folder, unzip and place the contents from the new SoftRater for WebLogic Release 4.6.1 zip file inside. There will be an XML file, a .JAR file and an .EAR file.
 - **ojsp.jar**
 - **IBSS_WL.ear**
 - **Insbridge.net.softraterconfig.xml**
8. Verify that the system property is in the WebLogic Server. If you have placed the new files in the same location as the previous files, the information can remain the same. If you have changed location, you will need to update the file.
9. Return to WebLogic. Install the required library. For help with installing the library and .EAR files, please see the SoftRater for WebLogic Installation Guide.
10. Install the new .EAR file.

11. Enter IBSS. You will need to re-enter the config information.
12. Verify your entry in IBFA.
13. If necessary, obtain any WSDL information from IBSS and update any calling application.
14. Test your configuration and updated calling applications before deploying to production.

Upgrading from Release 3.13.5 or Later

This method removes the previous .EAR but leaves the config files. The configuration information will remain and does not need to be re-entered in IBSS.

1. Locate the configuration folder used in the previous SoftRater for WebLogic installation. The configuration folder would have been parked in a location on the WebLogic server. For example:
 - In a Windows environment, C:\Insbridge\config
 - In a Linux environment, home/Insbridge/config

This same folder should be used for the update.

2. Enter WebLogic and stop the WebLogic Service.
3. Delete the old IBSS_WL.EAR file in WebLogic.
4. Start the WebLogic Service.
5. Return to the configuration folder and delete the previous .EAR file. You can leave the .jar file and the log files. Leave the **Insbridge.net.softraterconfig.xml** file as well.
6. Unzip the SoftRater for WebLogic zip file. There will be an XML file, a .JAR file and an .EAR file.
 - **ojsp.jar – you will not need this file**
 - **IBSS_WL.ear**
 - **Insbridge.net.softraterconfig.xml – you will not need this file**
7. Place the .EAR file from the new SoftRater for WebLogic Release 4.6.1 zip file inside the configuration folder. You do not need the .jar file or the .xml file.
8. Verify that the system property is in the WebLogic Server. If you have placed the new files in the same location as the previous files, the information can remain the same. If you have changed location, you will need to update the file.
9. Return to WebLogic.
10. Install the new .EAR file.
11. Enter IBSS. You will not need to re-enter the config information. All config information should be present.
12. Test your configuration before deploying to production.

UPGRADING WEBSPHERE

SoftRater for WebSphere can be upgraded any time after the IBRU system.

Upgrading from Release 3.13.4 or Previous

This method will remove the previous .EAR and config file. The configuration information will need to be re-entered in IBSS and validated in IBFA.

If you are using SQL Server, please see the Preserving Environments for SQL Server Upgrade information. The Preserving Environments for SQL Server Upgrade information will allow you to keep your existing environments by editing the config file.

1. Locate the configuration folder used in the previous SoftRater for WebSphere installation. The configuration folder would have been parked in a location on the WebSphere server. For example:

- In a Windows environment, C:\Insbridge\config
- In a Linux environment, home/Insbridge/config

This same folder should be used for the update.

2. Locate the current **Insbridge.net.softraterconfig.xml** file within the configuration folder and make a back-up copy. The configuration information will need to be re-entered in IBSS. The updated config file will not contain this information. This information cannot be directly imported but a copy of the original file may be helpful when re-entering.
3. Enter WebSphere and stop the WebSphere Service.
4. Delete the old IBSS_WL.EAR file in WebSphere.
5. Start the WebSphere Service.
6. Return to the configuration folder and delete the previous config file, and the previous .EAR file. You can leave the log file.
7. In the configuration folder, unzip and place the contents from the new SoftRater for WebSphere Release 4.6.1 zip file inside. There will be an XML file, and two .EAR files.
 - **IBSS_WL_v7.ear**
 - **IBSS_WS_v61.ear**
 - **Insbridge.net.softraterconfig.xml**
8. Return to WebSphere. Install the new .EAR file for the version of WebSphere you are running.
9. Enter IBSS. You will need to re-enter the config information.
10. If necessary, obtain any WSDL information from IBSS and update any calling application.
11. Verify you entry in IBFA.

12. If necessary, obtain any WSDL information from IBSS and update any calling application.
13. Test your configuration and updated calling applications before deploying to production.

Upgrading from Release 3.13.5 or Later

This method removes the previous .EAR but leaves the config files. The configuration information will remain and does not need to be re-entered in IBSS.

1. Locate the configuration folder used in the previous SoftRater for WebSphere installation. The configuration folder would have been parked in a location on the WebSphere server. For example:
 - In a Windows environment, C:\Insbridge\config
 - In a Linux environment, home/Insbridge/configThis same folder should be used for the update.
2. Enter WebSphere and stop the WebSphere Service.
3. Delete the old IBSS_WL.EAR file in WebSphere.
4. Start the WebSphere Service.
5. Return to the configuration folder and delete the previous .EAR file. You can leave the **Insbridge.net.softmaterconfig.xml** file and the log file.
6. In the configuration folder, unzip and place the contents from the new SoftRater for WebSphere Release 4.6.1 zip file inside. There will be an XML file, and two .EAR files.
 - **IBSS_WL_v7.ear**
 - **IBSS_WS_v61.ear**
 - **Insbridge.net.softmaterconfig.xml – you will not need this file**
7. Return to WebSphere. Install the new .EAR file.
8. Enter IBSS. You will not need to re-enter the config information. All config information should be present.
9. Test your configuration before deploying to production.

UPGRADING JBOSS

SoftRater for JBoss can be upgraded any time after the IBRU system.

Upgrading from Release 3.13.4 or Previous

This method removes the previous .EAR and config file. The configuration information needs to be re-entered in IBSS and validated in IBFA.

If you are using SQL Server, please see the Preserving Environments for SQL Server Upgrade information. The Preserving Environments for SQL Server Upgrade information allows you to keep your existing environments by editing the config file.

1. Locate the configuration folder used in the previous SoftRater for JBoss installation. The configuration folder would have been parked in a location on the JBoss server. For example:
 - In a Windows environment, C:\Insbridge\config
 - In a Linux environment, /Users/Administrator/Desktop/config

This same folder should be used for the update.

2. Locate the current **Insbridge.net.softraterconfig.xml** file within the configuration folder and make a back-up copy. The configuration information will need to be re-entered in IBSS. The updated config file will not contain this information. This information cannot be directly imported but a copy of the original file may be helpful when re-entering.
3. Enter JBoss and stop the JBoss Service.
4. Delete the old .EAR file from the JBoss deployment directory. ie:
<JBoss_Installation_Home>/server/SR_Server/deploy/
5. Return to the configuration folder and delete the previous config file. Go to “<JBoss_Installation_Home>/SR_Server/conf” folder and look the “jndi.properties” file. The configuration file information should be located here.
6. Return to JBoss. Install the new .EAR file. Copy the IBSS_JB.ear file to the <JBoss_HOME>/standalone/deployments location.
7. Start the JBoss Service.
8. Enter IBSS. You will need to re-enter the config information.
9. If necessary, obtain any WSDL information from IBSS and update any calling application.
10. Verify your entry in IBFA.
11. If necessary, obtain any WSDL information from IBSS and update any calling application.
12. Test your configuration and updated calling applications before deploying to production.

Upgrading from Release 3.13.5 or Later

This method will remove the previous .EAR config file.

This method removes the previous .EAR but leaves the config files. The configuration information will remain and does not need to be re-entered in IBSS.

1. Locate the configuration folder used in the previous SoftRater for JBoss installation. The configuration folder would have been parked in a location on the JBoss server. For example:

- In a Windows environment, C:\Insbridge\config
- In a Linux environment, /Users/Administrator/Desktop/config

This same folder should be used for the update.

2. Enter JBoss and stop the JBoss Service.
3. Delete the old .EAR file from the JBoss deployment directory. ie:
<JBoss_Installation_Home>/server/SR_Server/deploy/
4. Install the new .EAR file. Copy the IBSS_JB.ear file to the
<JBoss_HOME>/standalone/deployments location.
5. Start the JBoss Service.
6. Enter IBSS. You will not need to re-enter the config information. All config information should be present.
7. Test your configuration before deploying to production.

Common Errors

If you experience any deployment issues, look for a deploy fail file in the deployments folder. Delete the deploy fail file and try again.

You also can re-name the .ear file to IBSS_JB.ear.

Upgrading for 3.13.4 or Previous: Preserving Environments for a SQL Server Upgrade

NOTE: *You do not need to do perform this action if you are running release 3.13.5, or later. These steps are not necessary if you do not want to keep your existing environments.*

If you are utilizing SQL Server and want to keep your current Environment settings, you will need to edit the insbridge.net.softraterconfig.xml file.

1. Deploy the new .EAR file.
2. Open the insbridge.net.softraterconfig.xml. The insbridge.net.softraterconfig.xml file will be located in the folder you setup when you initially installed SoftRater for WebLogic. For example, C:\Insbridge\config.
3. Make a back-up copy of this file.
4. In the insbridge.net.softraterconfig.xml file, find this section:

```
<jdbcDriver provider="1" name="SQLSERVER">  
  <jdbcDriverClassName>com.microsoft.jdbc.sqlserver.SQLServerDriver</jdbcDriverClassName>  
  <jdbcUrlPrefix>jdbc:microsoft:sqlserver://</jdbcUrlPrefix>  
  <jdbcFetchSize>25</jdbcFetchSize>  
</jdbcDriver>
```

And replace it with this:

```
<jdbcDriver provider="1" name="SQLSERVER">  
  <jdbcDriverClassName>com.microsoft.sqlserver.jdbc.SQLServerDriver</jdbcDriverClassName>  
  <jdbcUrlPrefix>jdbc:sqlserver://</jdbcUrlPrefix>  
  <jdbcFetchSize>25</jdbcFetchSize>  
</jdbcDriver>
```

5. Restart the Application Server.

UPDATING SOFTRATER FOR JAVA DATABASES

After the application servers have been updated, you will need to update the database servers. All database updates for SoftRater engines must be performed manually.

SQL Server Update

SoftRater for Java utilizing a SQL Server database requires an update script be run against the SQL Server database if the IBRU release is 4.5.1 or previous.

The SQL database update file is packaged in the install, located in the Databases→SQL→SoftRater - IBSR→Update folder. The file name is usp_IBSR_v04.05.01.bak. Run the script against the database to update. No other steps are needed.

If you updating from release 4.5.1, you do not need to run the update script.

Oracle Database Update

SoftRater for Java utilizing an Oracle database requires an update script be run against the Oracle database if the IBRU release is 4.5.0 or previous.

The Oracle database update file is packaged in the install, located in the Databases→Oracle→SoftRater - IBSR→Update folder. The file name is usp_IBSR_v04.05.00.oracle. Run the script against the database to update. No other steps are needed.

If you updating from release 4.5.0, you do not need to run the update script

CONTACTING SUPPORT

If you need assistance with an Oracle Insurance Insbridge Rating and Underwriting System product, please log a Service Request using My Oracle Support at <https://support.oracle.com/>.

Address any additional inquiries to:

Oracle Corporation
World Headquarters
500 Oracle Parkway
Redwood Shores, CA 94065
U.S.A.

Worldwide Inquiries:
Phone: +1.650.506.7000
Fax: +1.650.506.7200
oracle.com

TTY ACCESS TO ORACLE SUPPORT SERVICES

Oracle provides dedicated Text Telephone (TTY) access to Oracle Support Services within the United States of America 24 hours a day, seven days a week. For TTY support, call 800.446.2398.

Index

A

Administration

Allow Data Type Change	33
Backup Share Folder Location.....	32
Batch Package Threads.....	32
Batch Results with New Line	33
Change Control.....	33
Enforce Release Packaging.....	32
Inactive Session Time Out.....	33
Messaging Server	32
Minimum Login User ID Length	33
Online Help	33
Show Override Date Mask.....	33
SoftRater Server	32
Use Insbridge Com + Admin.....	32
User Must Change Password.....	33

Administration Section

Online Help Settings	33
Setting Options.....	31

Allow Data Type Change

Admin	33
-------------	----

B

Backup

Registry Key.....	34, 37
-------------------	--------

Backup Share Folder Location

Admin	32
-------------	----

Batch Package Threads

Admin	32
-------------	----

Batch Results with New Line

Admin	33
-------------	----

C

Change Control

Admin	33
-------------	----

Changing

Administrator Email.....	32
--------------------------	----

Changing Machine Locations

Com + Services

Stopped.....	12
--------------	----

Configuring

Insbridge Framework Administrator	36
---	----

E

Editing

Web Config Settings	30
---------------------------	----

Edition Notice

Email

Changing Administrator.....	32
-----------------------------	----

Encryption

SoftRater Package	34, 37
-------------------------	--------

Enforce Release Packaging

Admin	32
-------------	----

Execute Update Script

	23
--	----

F

Framework Administrator

Administrator Email	32
---------------------------	----

H

HKEY_LOCAL_MACHINE/SOFTWARE/Ins

bridge	34, 37
--------------	--------

http://SERVERNAME/ibfa/

	36
--	----

I

IBRU

	6
--	---

Oracle Software Delivery Cloud

	9
--	---

IBRU Web Server

SERVERNAME	36
------------------	----

Inactive Session Time Out

Admin	33
-------------	----

Insbridge Framework Administrator

Configuring	36
-------------------	----

Insbridge Message Service

	21
--	----

Insbridge Services

Stopped.....	20
--------------	----

M

Messaging Server

Admin	32
-------------	----

Minimum Login User ID Length

Admin	33
-------------	----

O

Online Help	
Admin	33
Online Help settings	
Administration Section	33
Oracle Software Delivery Cloud	
IBRU	9
Required Programs	9
Overview	
Package	7
Threading	32

P

Package	
Environment	8
Overview	7
Part Numbers	
Oracle Software Delivery Cloud	9
PDF Reader	
Oracle Software Delivery Cloud	9

R

<i>Reboot Message</i>	19
Registry Key	34, 37
System Update	34
Requirements	44, 45, 46, 47
Running	
Database Updates	22

S

Script	
Executing Update	23
<i>Viewing Update</i>	40
SERVERNAME	
Replacing	36
Setting Options	
Administration Section	31
Settings	30
Administration	30
Editing Web Config	30
Thread	32
Show Override Date Mask	

Admin	33
SoftRater Package	
Encryption	34, 37
SoftRater Packages	
Environments	8
SoftRater Server	
Admin	32
SQL Scripts	
Query Analyzer	39

T

Thread	
Settings	32
Threading	
Overview	32

U

Unzip Utility	
Oracle Software Delivery Cloud	9
Update	
Web Config Settings	31
Updates	
Running	22
Viewing	22
Use Insbridge Com + Admin	
Admin	32
User Must Change Password	
Admin	33

V

Validating	
COM+ Library	12, 13
VFS Definition	7
Viewing	
Database Updates	22
Virtual File Server Definition	7

W

Web Config	
Editing Settings	30