

Agile Product Lifecycle Management

Agile Drive User Guide

v9.3.2



Part No. E28696-01

December 2012

Copyright and Trademarks

Copyright © 1995, 2012, Oracle and/or its affiliates. All rights reserved.

This software and related documentation are provided under a license agreement containing restrictions on use and disclosure and are protected by intellectual property laws. Except as expressly permitted in your license agreement or allowed by law, you may not use, copy, reproduce, translate, broadcast, modify, license, transmit, distribute, exhibit, perform, publish or display any part, in any form, or by any means. Reverse engineering, disassembly, or decompilation of this software, unless required by law for interoperability, is prohibited.

The information contained herein is subject to change without notice and is not warranted to be error-free. If you find any errors, please report them to us in writing.

If this software or related documentation is delivered to the U.S. Government or anyone licensing it on behalf of the U.S. Government, the following notice is applicable:

U.S. GOVERNMENT RIGHTS

Programs, software, databases, and related documentation and technical data delivered to U.S. Government customers are "commercial computer software" or "commercial technical data" pursuant to the applicable Federal Acquisition Regulation and agency-specific supplemental regulations. As such, the use, duplication, disclosure, modification, and adaptation shall be subject to the restrictions and license terms set forth in the applicable Government contract, and, to the extent applicable by the terms of the Government contract, the additional rights set forth in FAR 52.227-19, Commercial Computer Software License (December 2007). Oracle USA, Inc., 500 Oracle Parkway, Redwood City, CA 94065.

This software is developed for general use in a variety of information management applications. It is not developed or intended for use in any inherently dangerous applications, including applications which may create a risk of personal injury. If you use this software in dangerous applications, then you shall be responsible to take all appropriate fail-safe, backup, redundancy and other measures to ensure the safe use of this software. Oracle Corporation and its affiliates disclaim any liability for any damages caused by use of this software in dangerous applications.

Oracle and Java are registered trademarks of Oracle Corporation and/or its affiliates. Other names may be trademarks of their respective owners.

This software and documentation may provide access to or information on content, products and services from third parties. Oracle Corporation and its affiliates are not responsible for and expressly disclaim all warranties of any kind with respect to third party content, products and services. Oracle Corporation and its affiliates will not be responsible for any loss, costs, or damages incurred due to your access to or use of third party content, products or services. The RMW product includes software developed by the Visigoth Software Society.

CONTENTS

Copyright and Trademarks	2
Introducing Agile Drive	1
Working with Agile Drive.....	1
Limitations.....	2
Definitions	2
Structure of Agile Drive.....	3
What's New in Agile Drive 9.3.2.....	4
Setting up the Agile Drive	5
Enabling Agile Drive in Java Client	5
Configuring Agile Drive Settings.....	6
Changing Parameter Values in the settings.conf File	6
Parameter Definitions	6
Agile Drive Configuration for OAM Setup.....	8
Deployment Architecture.....	10
Optional Settings.....	11
Platform Settings	11
Mapping Agile Drive	11
On Windows XP System	12
On Windows VISTA System.....	12
On Windows 7 System.....	13
On Macintosh System.....	15
On GNOME Linux System.....	15
On KDE Linux System	17
Using the Agile Drive	19
Searching for Agile Objects	19
Working with Files and Folders	21
Opening files in Agile Drive	22
Tracking Versions	22
Traversing Item Revisions	25
Traversing a Bill of Material.....	26

Preface

Oracle's Agile PLM documentation set includes Adobe® Acrobat PDF files. The [Oracle Technology Network \(OTN\) Web site](http://www.oracle.com/technetwork/documentation/agile-085940.html) <http://www.oracle.com/technetwork/documentation/agile-085940.html> contains the latest versions of the Agile PLM PDF files. You can view or download these manuals from the Web site, or you can ask your Agile administrator if there is an Agile PLM Documentation folder available on your network from which you can access the Agile PLM documentation (PDF) files.

Note To read the PDF files, you must use the free Adobe Acrobat Reader version 9.0 or later. This program can be downloaded from the [Adobe Web site](http://www.adobe.com) <http://www.adobe.com>.

The [Oracle Technology Network \(OTN\) Web site](http://www.oracle.com/technetwork/documentation/agile-085940.html) <http://www.oracle.com/technetwork/documentation/agile-085940.html> can be accessed through **Help > Manuals** in both Agile Web Client and Agile Java Client. If you need additional assistance or information, please contact My Oracle Support (<https://support.oracle.com>) for assistance.

Note Before calling Oracle Support about a problem with an Agile PLM manual, please have the full part number, which is located on the title page.

TTY Access to Oracle Support Services

Oracle provides dedicated Text Telephone (TTY) access to Oracle Support Services within the United States of America 24 hours a day, 7 days a week. For TTY support, call 800.446.2398. Outside the United States, call +1.407.458.2479.

Readme

Any last-minute information about Agile PLM can be found in the Readme file on the [Oracle Technology Network \(OTN\) Web site](http://www.oracle.com/technetwork/documentation/agile-085940.html) <http://www.oracle.com/technetwork/documentation/agile-085940.html>.

Agile Training Aids

Go to the [Oracle University Web page](http://www.oracle.com/education/chooser/selectcountry_new.html) http://www.oracle.com/education/chooser/selectcountry_new.html for more information on Agile Training offerings.

Accessibility of Code Examples in Documentation

Screen readers may not always correctly read the code examples in this document. The conventions for writing code require that closing braces should appear on an otherwise empty line; however, some screen readers may not always read a line of text that consists solely of a bracket or brace.

This documentation may contain links to Web sites of other companies or organizations that Oracle does not own or control. Oracle neither evaluates nor makes any representations regarding the accessibility of these Web sites.

Introducing Agile Drive

This chapter includes the following:

▪ Working with Agile Drive.....	1
▪ Limitations.....	2
▪ Definitions.....	2
▪ Structure of Agile Drive.....	3
▪ What's New in Agile Drive 9.3.2.....	4

Agile Drive is a system of managing the file attachments of Agile objects from your computer system in the form of files and folders, without requiring you to invoke Agile PLM application. It connects Agile's Distributed File Manager as a network place on your system, thus enabling Explorer like operations, such as copy or delete, on file attachments of Agile objects. It simplifies file management, leveraging existing intuitive client applications, like Explorer, Mac Finder, etc.

Working with Agile Drive

Agile Drive enables you to use the files and folders available in Agile PLM without having to download them. With Agile Drive, you can carry out the following actions:

1. Work on **Files**, such as documents, drawings, associated with Agile objects as file attachments in Agile PLM System
 - **View a File:** Open a file directly from an Agile Drive folder and view it in its native application, without downloading or checking out.
 - **Save a File:** Save a file directly in an Agile Drive folder and create a file attachment to the corresponding Agile object in the Agile PLM System.
 - **Edit a File:** Edit a file in its native application directly from an Agile Drive folder without downloading or checking out. To create a new version, save it as a new file.
 - **Create a File:** Create a new file in Agile Drive using drag and drop from a non-Agile Drive.
 - **Delete a File:** Delete a file from an Agile Drive folder using **Delete** key, which in turn deletes the file attachment from the corresponding Agile object in the Agile PLM system.
 - **View File Properties:** View file properties, such as data of creation, date of last modification, size and more. Right-click a file in the Agile folder to locate View File Properties.
 - **Add a File:** Add a file from your local drive, or any non-Agile network drive to an Agile Drive folder. Agile Drive stores this file as a file attachment to the corresponding Agile object in Agile PLM system. Agile Drive creates a version of every file that you add (this applicable only for Design and File Folder objects). You can choose either the Drag-Drop option or Copy-Paste option to add a file.
 - **Move a File:** Move a file from Agile Drive folder. You can use the Cut-Paste option to move a file from Agile Drive folder. Agile Drive creates a version of every file that you remove (this is applicable only for Design and File Folder objects).
 - **Copy Files:** Copy files from a non-Agile Drive folder into an Agile Drive folder or drag and drop the required file.

2. Work on Folders

- **View Folder Properties:** Select **Properties** from right-click menu to view file properties of an Agile Drive folder.

Limitations

Agile Drive does *not* support the following functionalities:

File Functions

- Save a file to a folder on the Agile Drive. Use the **Save As** option to save the file under a different name.
- Rename a file
- Check-in files from Agile Drive folders
- Check-out files into Agile Drive folders
- Create files in Agile Drive folder
- Extract data out of an uploaded file in Agile PLM
- Undo operations

Folder Functions

- Create Agile Drive folders
- Use the Copy-Paste option or the Drag-Drop option to move an Agile Drive folder into another Agile Drive folder
- Use the Copy-Paste option or the Drag-Drop option to move a non-Agile Drive folder to an Agile Drive folder
- Rename Agile Drive folders

Business Functions

- Affected Items & BOM revisions rendering only for ECOs
- Design Structure expansion
- Workflow approvals
- Status change
- Display of Application data (Cover Page/P2/P3)
- PPM Content Tab

Definitions

Name	Descriptions
Agile Drive	A file system that helps manage the files attached to objects in the Agile PLM system. It is a logical representation of the Agile PLM objects and their associated attachments.
Agile object	An entity defined in Agile PLM that groups a set of attributes and relationships related to that object. Examples: Item, Folder, etc.

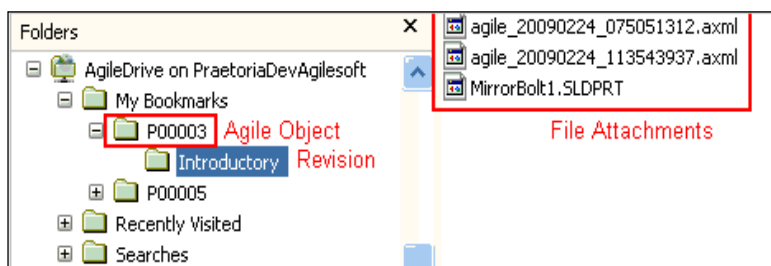
Name	Descriptions
Agile PLM folder	A folder in Agile PLM system that holds attachments of other Agile objects, such as Item, Change Order, etc. Agile PLM folder is also treated as an independent Agile object.
Agile Drive folder	A folder that represents an Agile object on your system.
non-Agile Drive folder	A folder on your system drive or any network drive other than Agile Drive.

Structure of Agile Drive

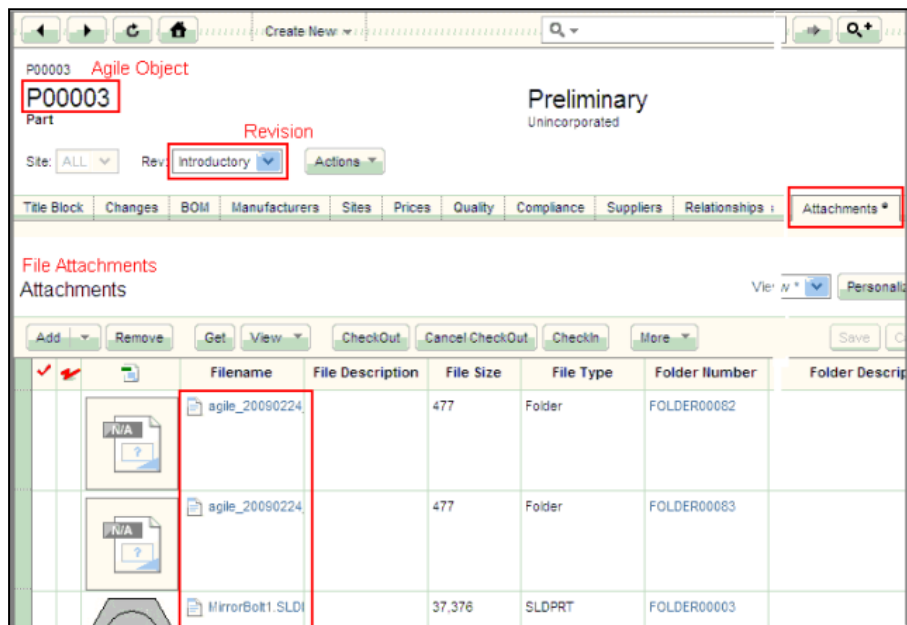
Agile Drive displays Agile objects as folders, and attachments as files in these folders. The table below gives us a better understanding of Agile objects in both; Agile Drive and Agile PLM system.

Entity	In Agile PLM System	In Agile Drive
Part	A Part is an Agile object. Example - P00003	A Part is a folder, called as Agile Drive folder, named after the Agile object it represents. Example - P00003
Revision	A Revision is a state of an Agile object. Example: Introductory	A Revision is a Sub-folder, again called as Agile Drive folder, named after the Revision state of the Agile object it represents. Example: Introductory
Attachments	An Attachment is a file associated to an Agile object. Example: - agile_20090224_075051312.xml - agile_20090224_113543937.xml - MirrorBolt1.SLDPRT	An Attachment is a Agile Drive file contained in an Agile Drive folder. The name of this Agile Drive file is exactly the same as that of corresponding Attachment. Example: - agile_20090224_075051312.xml - agile_20090224_113543937.xml - MirrorBolt1.SLDPRT

Agile Drive: An Agile Object and its File Attachments in Agile Drive



Agile PLM: An Agile Object and its File Attachments in Agile Application



What's New in Agile Drive 9.3.2

Agile Drive introduces the following updates in 9.3.2.

- **Configuring:**
 - **Agile Drive in the OAM Setup.** Refer to [Agile Drive Configuration for OAM Setup](#) on page 7.
 - **Cache Reload Interval and Timeout parameters.** Refer to [Parameter Definitions](#) on page 6.
- **Mapping Agile Drive on Windows 7 System.** Refer to [On Windows 7 System](#) on page 13.
- **Setting the Readonly property to 'FALSE' in the settings.conf file,** turns on the read and write mode and allows you to modify files. Refer to [Parameter Definitions](#) on page 6.

Setting up the Agile Drive

This chapter includes the following:

- Enabling Agile Drive in Java Client 5
- Configuring Agile Drive Settings 6
- Mapping Agile Drive 11

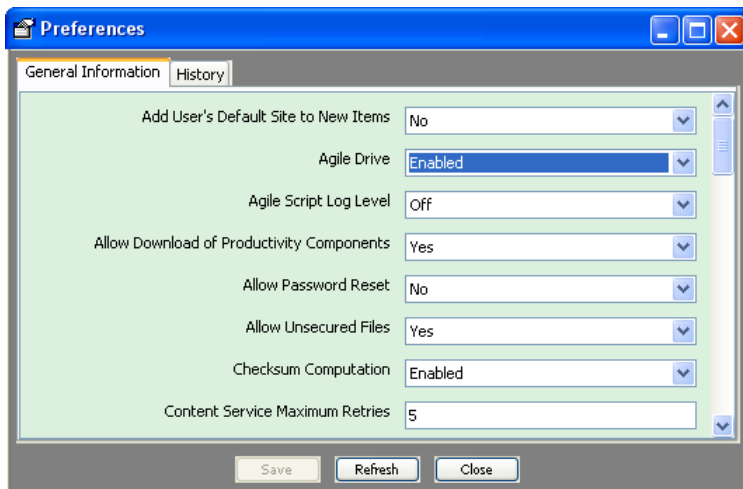
Enabling Agile Drive in Java Client

When you deploy Agile PLM, by default, the Agile Drive is set as **Disabled**. To use Agile Drive, ensure to enable it in Java Client.

To enable Agile Drive:

1. In Java Client, go to **Server Settings > Preferences**.
2. From the Agile Drive dropdown list, select **Enabled**.

Note By default, Agile Drive is set to **Disabled**.



Once you enable the Agile Drive, the access will be Read-only. To change the access to Read-Write, see Configuring the Agile Drive Settings.

3. Restart all Distributed File Managers.

Configuring Agile Drive Settings

You can customize settings for Agile Drive by editing parameter definitions in the settings.conf file.

Changing Parameter Values in the settings.conf File

To change parameter values in the settings.conf file:

1. Navigate to Agile\agileDomain\applications\webdav.war\WEB-INF\classes\
2. Open 'settings.conf' file
3. Set the readonly.mode=false & Save file.
4. Restart FileServer.

Parameter Definitions

You can edit the settings.conf file to define the following parameters.

- URL for Application and File Manager
- User Account Details
- Encoding Details
- Readonly mode
- Exclusion Filters
- Cache tuning
- Maximum rows displayed

URL for Application and File Manager

Name	Description
app.server.url	Specifies the location of the Agile PLM Application Server. The format is <a href="http://<Server>:<Port>/Agile/RMIServlet">http://<Server>:<Port>/Agile/RMIServlet
file.server.url	Specifies the location of the File Server (Manager). The format is <a href="http://<Server>:<Port>/Filemgr/services/FileServer">http://<Server>:<Port>/Filemgr/services/FileServer

User Account Details

User Credentials	Description
Name	Agile User ID Example: ifsuser
Password	The encrypted Agile User Password Example: 221B758BAAE4C4

Encoding Details

Parameter	Description
name.encoding	Encodes directory names using HTML URL Encoding . Setting the value to 'FALSE' enables HTML URL encoding on folder names.

Readonly mode

Parameter	Description
readonly.mode	Setting it to 'FALSE' turns on the 'Read-write' mode. Setting it to 'TRUE' allows you to only view the files and not modify them. The default setting is 'TRUE'.

Cache Tuning Parameters

Parameter	Description
cache.reload.interval	Setting it to 2 enables the user to refresh the cache twice.
cache.timeout	Setting it to 30 deletes inactive cache entries from the Agile Drive after 30 minutes. 30 indicates the time to live (TTL) for cache entries. The minimum cache timeout is 20 minutes.

Exclusion Filters

Parameter	Description
exclude.filetypes	Specifies file types that should be filtered out of the file list. Usage: exclude.filetypes - doc,dwg,ppt. For example, to filter out Word files and show only PDFs, set exclude.filetypes=doc.

Maximum rows displayed

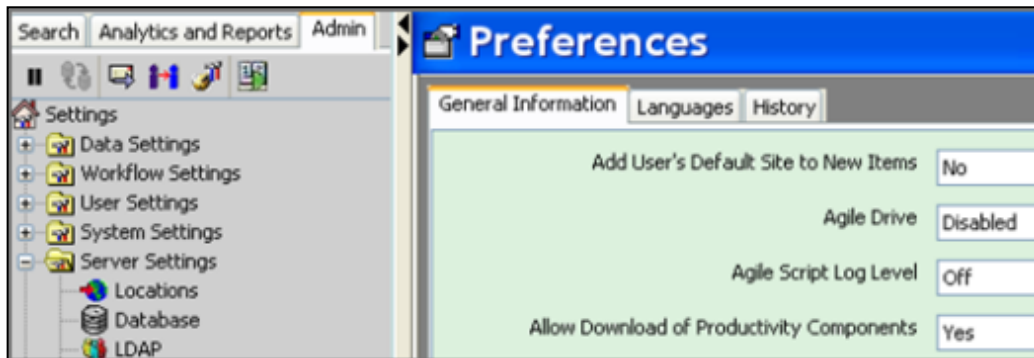
Parameter	Description
max.rows	Specifies the number of rows to be displayed in the Search Results and BOM tables. Minimum value = 250. Maximum value = 5000

Agile Drive Configuration for OAM Setup

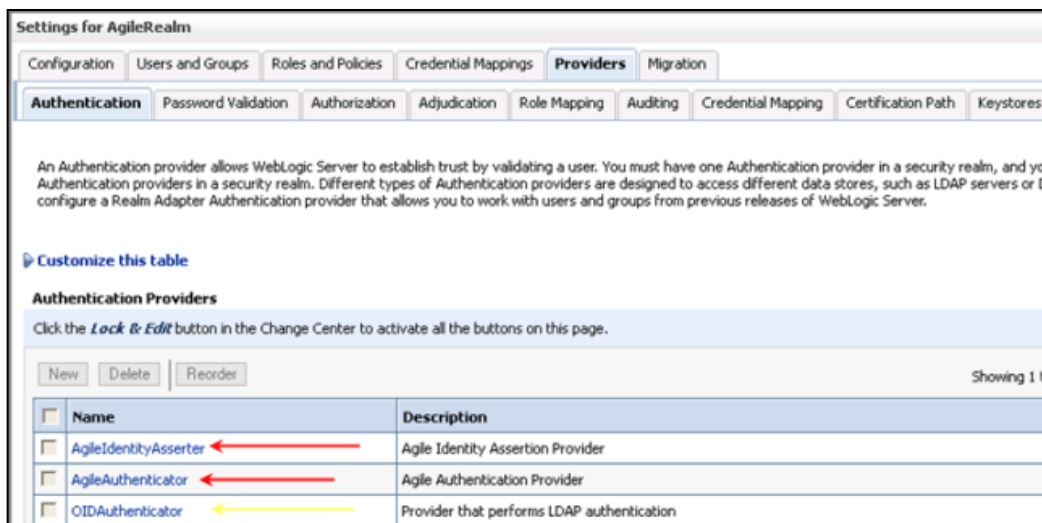
The Agile Drive configurations given below are applicable for Oracle Access Manager and Windows NTLM.

To configure Agile Drive for SSO setup:

1. Ensure Agile Drive is enabled in the Java Client.



2. Configure LDAP Authenticator in WLS Admin console. Refer to the *Agile PLM Administrator Guide* for details on how to configure LDAP in WLS Admin Console.



Settings for OIAuthenticator

Configuration Performance

Common **Provider Specific**

Click the **Lock & Edit** button in the Change Center to modify the settings on this page.

Save

Use this page to define the provider specific configuration for this Oracle Internet Directory Authenticator.

Connection

Host: blr2230059.idc.oracle.cc

Port: 3060

Principal: cn=orcladmin,cn=Users,

Credential:

Confirm Credential:

☐ **SSLEnabled**

Users

User Base DN: cn=Users,dc=idc,dc=ore

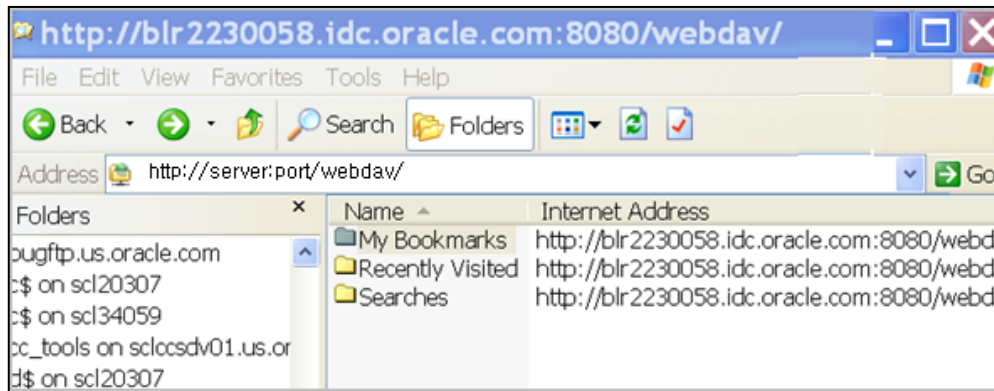
3. Ensure the File Server and Agile Drive application are configured with WLS direct access without going through the proxy URL.

Example:

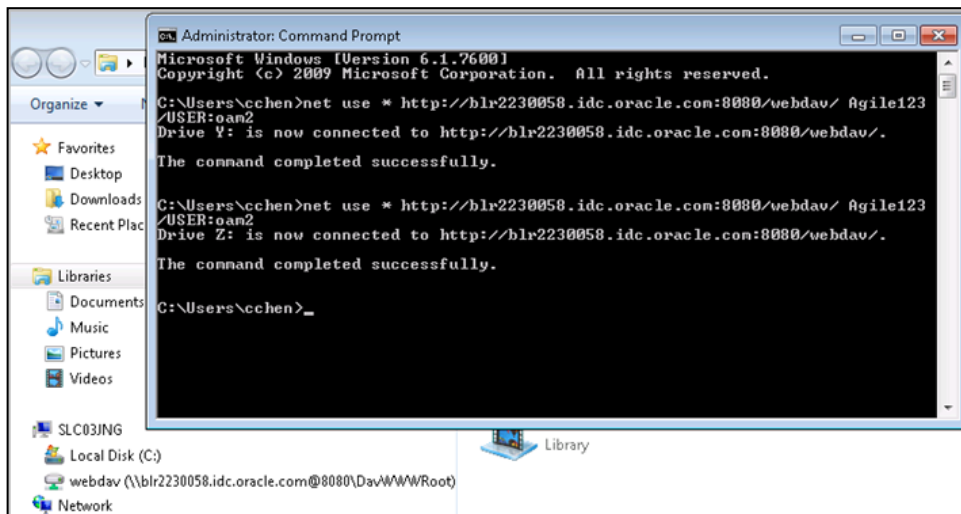
- In server.conf for File server
app.server.http://<Server>:<Port>/Agile/services/FSHelper
file.server.url=http://<Server>:<Port>/Filemgr/services/FileServer
dms.server.url=http://<Server>:<Port>/Agile/services/DmsService
- In Settings.conf for Agile Drive
app.server.url=http://<server>:<Port>/Agile/RMIServlet
file.server.url=http://<server>:<Port>/Filemgr/services/FileServer

4. Configure Agile drive in Windows XP and Window 7 and the results are as shown below.

Windows XP



Windows 7



Deployment Architecture

- XML based request/response model
- Customized version of Tomcat 6.0 Web DAV Servlet
- Supported on most platforms
- Deployed on File Manager instance as a new Web Application
- Communicates with Application Server for object meta data
- Caching for better performance

Optional Settings

Agile Searches on Windows XP/Vista times out after 30 seconds. This is due to the timeout feature of Microsoft Internet Explorer 7.

To increase the Microsoft Client timeout:

1. Add a ReceiveTimeout DWORD value with a data value of (<number of seconds>)*1000 in the Registry settings as follows:
HKEY_CURRENT_USER\Software\Microsoft\Windows\CurrentVersion\Internet Settings
Example: If you want the timeout duration to be 8 minutes, set the ReceiveTimeout data value to 480000 (<480>*1000).
2. Reboot the system.

Platform Settings

1. Microsoft Windows Explorer - XP/Vista

The Web Folders Client is bundled in XP/Vista. Download and install Microsoft Web Folder Update **KB907306** from

<http://www.microsoft.com/downloads/details.aspx?FamilyId=17C36612-632E-4C04-9382-987622ED1D64&displaylang=en>

2. MAC OSX Finder

To ensure the correct working of file uploads, disable the creation of intermediate file store (.DS_Store).

<http://support.apple.com/kb/HT1629>

3. IIS Support

Supports only IIS 6.0 & 7.0.

Ensure that the **WebDAV** Web Service Extension is set to **Allowed**.

Mapping Agile Drive

You can map Agile Drive on one of the following operating systems.

- [On Windows XP System](#) on page 12
- [On Windows Vista System](#) on page 12
- [On Windows 7 System](#) on page 13
- [On Macintosh System](#) on page 15
- [On GNOME Linux System](#) on page 15
- [On KDE Linux System](#) on page 17

On Windows XP System

To map Agile Drive on MS Windows XP system:

Note You cannot deploy Agile Drive on MS Windows XP-64 since it does not contain the web folders component.

1. On the desktop, double-click the **My Network Places** icon.



2. Click the **Add a network place** link.
3. In the **Add Network Place Wizard** window click **Next**. Choose a network location.
4. Enter the **Host Name or IP Address** of the server where Agile Drive is deployed, together with its **Port Number** and the **Folder Name**, as follows:

http://<Host Name or IP Address>:<port>/webdav/

Note Use the host name/IP address of web proxy or Tomcat server where Agile drive is deployed (same as the Agile File Manager by default).

Note Contact your Agile administrator for the IP Address and complete path of Agile Drive.

5. Click **Next**. In the **Connection** window that pops up, enter your Agile PLM username and password.

Note Contact your Agile administrator for username and password.

If you do not want Agile Drive to ask you for user name and password each time you connect, select the **Remember my password** check box.

6. Click **OK**. Enter a name for the network place.
7. Click **Next**.
8. Click **Finish**.

The Agile Drive folder window appears.

On Windows VISTA System

To map Agile Drive on Windows VISTA system:

1. Click **Computer** in the Start menu.

In the **Computer** window, click the **Map a Network Drive** icon.

In the **Map Network Drive** wizard window, click the **Connect to a Web site that you can use to store your documents and pictures** link.

In the **Add Network Location Wizard** window, click **Next**. Choose a custom network location.

2. Specify the location of your website.
3. Select **Choose a custom network location**.
4. Enter the **Host Name or IP Address** of server where Agile Drive is deployed, together with its **Port Number** and the **Folder Name**, as follows:

http://<Host Name or IP Address>:<port>/webdav/

Note Use host name/IP address of web proxy or Tomcat server where Agile Drive is deployed (same as Agile File Manager by default).

Note Contact your Agile administrator for the IP Address and complete path of Agile Drive.

5. Click **Next**.
6. In the **Connection** window that pops up, enter your Agile PLM username and password.

Note Contact your Agile administrator for username and password.

If you do not want the Agile Drive to ask you for username and password each time you wish to connect, select the **Remember my password** check box.

7. Click **OK**. Enter a name for the network location. You may change this name to one of your choice.
8. Click **Next**.
9. Click **Finish**.

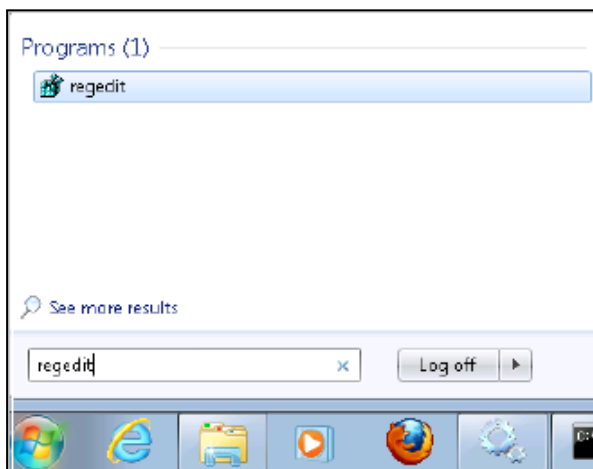
The Agile Drive folders window appears.

Important Agile Drive folders do not open in Windows VISTA on double-clicking. Right-click on it and select **Open**.

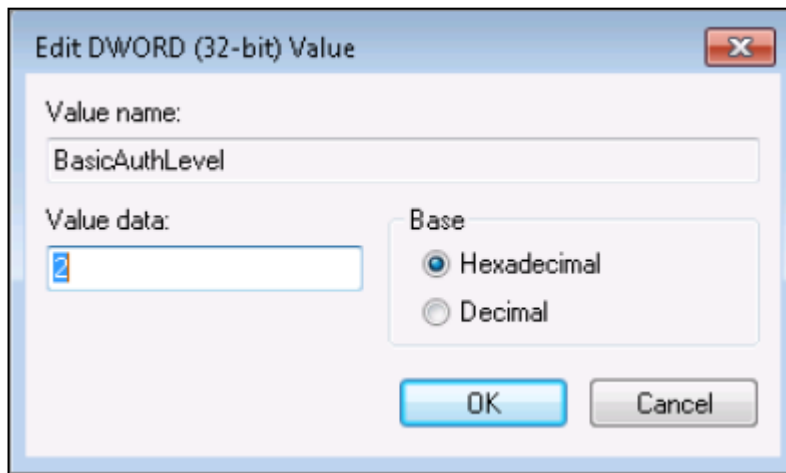
On Windows 7 System

To map Agile Drive on Windows 7 system (both 32-bit and 64-bit machine):

1. Click the **Start** button in Windows 7.
2. Run **regedit**.



3. Navigate to key "HKEY_LOCAL_MACHINE\SYSTEM\CurrentControlSet\services\WebClient\Parameters" in regedit and modify the parameter "BasicAuthLevel" with value of 2. This enables basic authentication for Windows 7.



4. Close **regedit** to save the changes.
5. Restart the service of "WebClient" in Windows 7 Services.



6. Launch the command in Windows 7.
7. Enter the following in the command line: `net use * http://<Host Name or IP Address>:<port>/webdav/ PASSWORD /USER:USERID` where User= Username, and password.
8. Press ENTER.

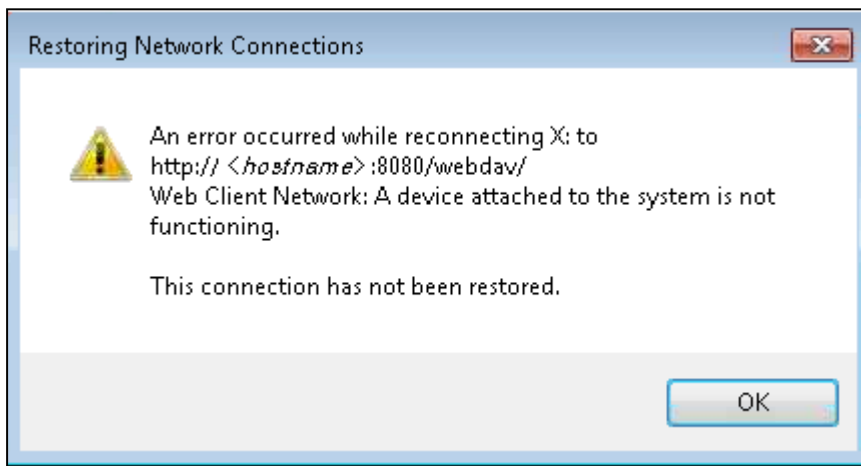
```
C:\>net use * http://sc134059.us.oracle.com:8090/webdav/ agile /USER:admin
Drive Y: is now connected to http://sc134059.us.oracle.com:8090/webdav/.

The command completed successfully.

C:\>_
```

You have successfully mapped Agile Drive on Windows 7.

Users connecting to Agile Drive on WIN7 face the following warning.



Since this is a WIN7 limitation, the workaround is to disconnect and configure Agile Drive again.

On Macintosh System

To map Agile Drive on the Macintosh system:

1. Select **Connect to Server** from **Go** in **Main** menu.
2. In the **Connect to Server** window, enter the **Host Name or IP Address** of the server where Agile Drive is deployed, together with **Port Number** and **Folder Name**, as follows:
http://<Host Name or IP Address>:<port>/webdav/

Note Use host name/IP address of web proxy or Tomcat server where Agile Drive is deployed (same as Agile File Manager by default).

Note Contact your Agile PLM administrator for required data values.

3. Click **Connect**.
4. Enter your Agile PLM username and password.
5. Click **OK**.

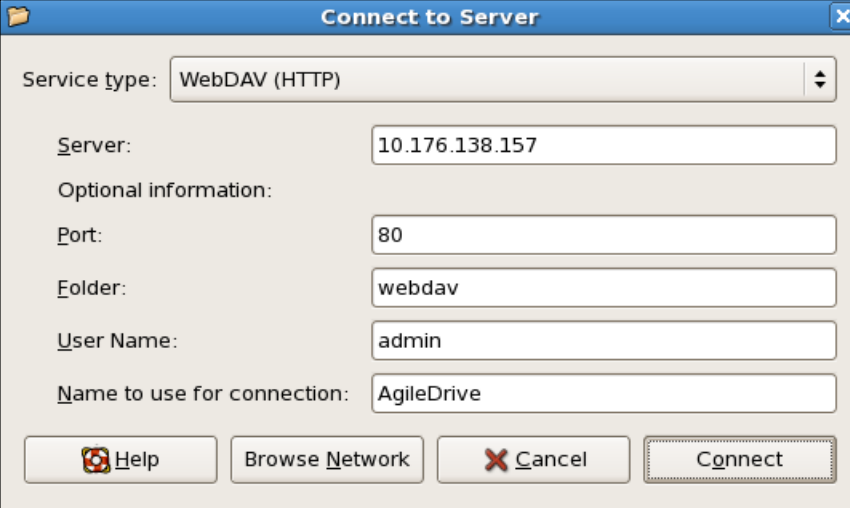
The Agile Drive folder window appears.

On GNOME Linux System

To map Agile Drive on the GNOME Linux system:

1. Select **Connect to Server...** from **Places** in the **Main** menu.

The **Connect to Server** screen appears.



The image shows a 'Connect to Server' dialog box with a blue title bar and a close button. It contains several input fields and buttons. The 'Service type' dropdown is set to 'WebDAV (HTTP)'. The 'Server' field contains '10.176.138.157'. Under 'Optional information:', the 'Port' is '80', 'Folder' is 'webdav', 'User Name' is 'admin', and 'Name to use for connection' is 'AgileDrive'. At the bottom are four buttons: 'Help' (with a question mark icon), 'Browse Network', 'Cancel' (with a red X icon), and 'Connect'.

Field	Value
Service type	WebDAV (HTTP)
Server	10.176.138.157
Optional information:	
Port	80
Folder	webdav
User Name	admin
Name to use for connection	AgileDrive

Buttons: Help, Browse Network, Cancel, Connect

2. Enter the following parameters:

Service type	Select WebDAV (HTTP) from the drop-down list.
Server	Enter the IP Address of the server where Agile Drive is deployed.
Port	Enter Port Number of the server. The default value is 80 .
Folder	Enter webdav in lower case.
User Name	Enter your Agile PLM username.
Name to use for connection	Enter any name of your choice.

Note Contact the Agile administrator for required values.

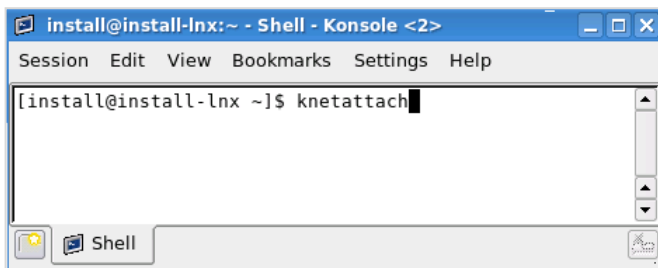
3. Click **Connect**.
4. Enter your Agile PLM password and click **Connect**.

The Agile Drive default folder window appears.

On KDE Linux System

To map Agile Drive on the KDE Linux system:

1. Open **Shell Console** and execute **knetattach**.



2. Select **Webfolder (webdav)** and click **Next**.
3. Enter the following data:

Name	Enter a name of your choice.
User	Enter your Agile PLM user name.
Server	Enter the IP Address of the server where Agile Drive is deployed.
Port	Enter Port Number of the server. The default value is 80 .
Folder	Enter webdav in lower case.

Note Contact the Agile administrator for required values.

4. Click **Connect**.

The Agile Drive folder window appears.

Using the Agile Drive

This chapter includes the following:

▪ Searching for Agile Objects	19
▪ Working with Files and Folders.....	20
▪ Opening files in Agile Drive.....	22
▪ Tracking Versions	22
▪ Traversing Item Revisions	25
▪ Traversing a Bill of Material	26

You can access Agile Drive using Windows Explorer, listed under My Network Places. When prompted, log in using your Agile PLM user name and password.

For quick access to Agile Drive, you may create a shortcut on your desktop or create its menu item in the Start Menu.

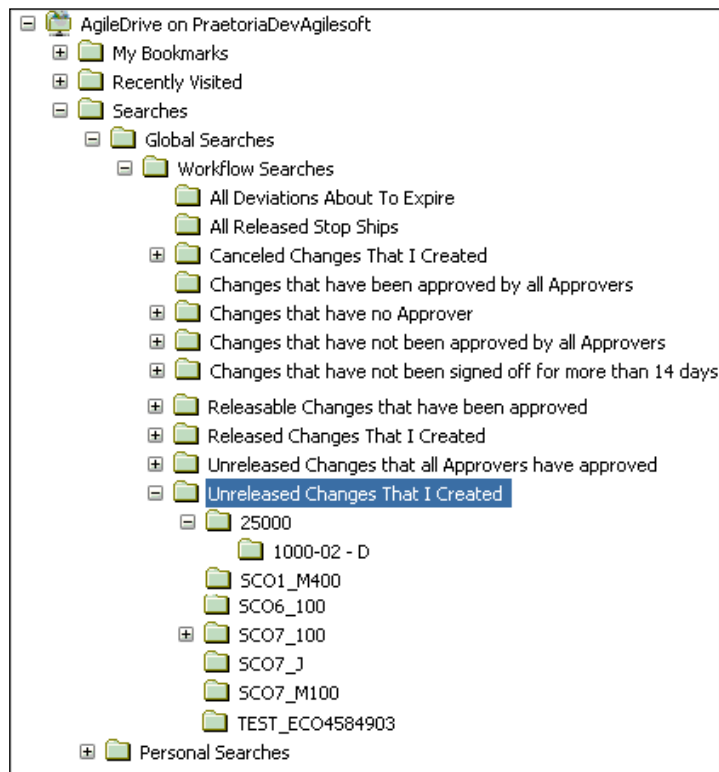
Note MS Vista 64-bit and Windows XP 64-bit are *not* supported because Microsoft does not ship the required drivers. To open a folder, right-click on it and select **Open**.

Note Access to Agile Drive folders and files depends on the roles and privileges assigned to you in Agile PLM Administrator.

Searching for Agile Objects

You can search for Agile PLM objects using Agile's canned (predefined) queries, such as Global Searches and Personal Searches. A canned search query appears as a folder in Agile Drive, and the Search Results appear as folders within this folder.

For example, to perform a search called **Unreleased Changes That I Created**, navigate to the corresponding Folder. All unreleased changes that you created appear as folders within this Search folder. Navigate to the desired unreleased change folder to see the affected items and its attachments, if any.



Search Limitations

Any search that requires user inputs or search criteria is not a feature of Agile Drive. For example, you cannot search for a specific ECO, say ECO25000. To search for specific searches, you need to use the Explorer feature of file or folders search.

To search for specific folders in (Windows XP):

1. Click **Start > Search > For Files or Folders...**
2. In the **Search Results** window, click **All Files and Folders**. Specify the search criteria in the search field(s).
3. In the **Look in** drop-down list, select **Browse..** A **Browse for Folder** window pops up.
4. Expand **My Network Places** and select the Agile Drive.
5. Click **OK** to return to the Search Results window.
6. Click **Search** button.

The specified object appears as a folder in the Search results.

Working with Files and Folders

You can perform the following actions on files and folders in **Agile Drive**.

Note Due to limitations of the client OS, Agile Drive error messages do not show up correctly on the client side.

Caution Intermittent failures can occur while adding multiple files on MAC OSX Finder.

How to	Steps
View or read a file	<p>In an Agile Drive folder, double-click a file to read or view. Alternately, select Open from the right-click menu. The system opens the file in its associated application.</p> <p>For example, when you double-click a MS Word document file in an Agile folder, the system invokes MS Word, which opens this document in editable mode. If MS Word is not installed on your system, you cannot view the document.</p> <p>You can only open the MS Office files directly from Agile Drive provided MS Office or MS Office Viewer application is installed on your system. For every other file type, you need to drag and drop the file (or copy the file and paste it) to the desktop or local drive and open it with its associated application.</p>
Save a file	<p>In Agile Drive, you can save a file in two ways:</p> <p>Save a new file in an Agile Drive folder directly: Create a file in an application and click Save (or Ctrl+S). In the Save window, select and save it in the desired Agile Drive folder.</p> <p>Save As: After editing an existing file in the Agile Drive folder, you can only save it using the Save As option due to the versioning aspect of Agile PLM.</p> <p>Use the Save As function to copy a file from an Agile Drive folder to your system folder, and save it after editing.</p>
Delete a file	<p>Deletion of a file from an Agile Drive folder implies removal of a file attachment from an Agile object.</p> <p>To delete a file, select the desired file(s) in the Agile Drive folder and press Delete (Del) key once, or select Delete from right-click menu.</p> <p>The system deletes the file(s) without issuing any warning or requesting any confirmation. Agile Drive continues to display the deleted file(s) until you Refresh the display.</p> <p>Although the file appears to be deleted from Agile Drive folder, and from the corresponding Agile object, the Agile PLM application does not purge it out.</p> <p>Agile Drive does not allow deletion of a Redlined File.</p>
View properties of a file	<p>Select Properties from right-click menu of a selected file in the Agile Drive folder, to view its general properties.</p>
Add a file	<p>Adding a file in an Agile Drive folder implies adding a file attachment to an Agile object. You can do this by</p> <ul style="list-style-type: none"> - copying & pasting - dragging & dropping, a file from a non-Agile Drive folder into an Agile Drive folder.

How to	Steps
	You can also use the Save, and Save As features to save a file from an application. Agile Drive does not display the added file(s) until you refresh the display. When you add multiple files in Read-only mode of Agile Drive, a pop-up message appears for each file you add. It is recommended that you add only one or two files at a time.
Copy a file from an Agile Drive folder to a non-Agile Drive folder	In an Agile Drive folder, select the desired file. Select Copy from the right-click menu, or select Copy from Edit Menu of MS Windows Explorer. Navigate to the desired non-Agile Drive folder. Select Paste from the right-click menu, or, select Paste from Edit Menu of MS Windows Explorer.
View folder properties	To view general properties of a folder in Agile Drive, select Properties from right-click menu.

Opening files in Agile Drive

Agile Drive supports opening *only* Microsoft Office format files from the Internet Explorer.

To open files in Agile Drive:

- For HTML, DOC, RTF, XLS, PPT and other Microsoft formats which support Microsoft clients: Double-click the file or open within Internet Explorer after authentication.

Note Text and PDF files do *not* open in Agile Drive.

To open text and PDF files:

1. Select the files from the Agile Drive folder.
2. Drag and drop the files to the desktop.
3. Click **Open**.

To open files in Adobe Reader or Notepad:

1. Select the file from the Agile Drive folder.
2. Click **File > Open**.
3. Navigate to **Network Places > Agile Drive**.
4. Click **Open**.

Tracking Versions

Versioning applies to Design objects and File Folder objects of Agile PLM. When you add or delete a file attachment from a Design object or a File Folder object, Agile PLM retains the original status of these attachments as a version.

Agile Drive displays these versions as numbered folders under **Previous Versions** Folder in the 'versioned' Agile object, with Version Number 1 being the oldest/earliest version of the said Agile object.

This can best be understood with the example below:

1. In Agile Drive, select **FOLDER00947**, as shown in Screen 1. It contains three files.
FOLDER00947 in Agile Drive is an Agile PLM **File Folder Object**, which has three file attachments.

Screen 1: Select a folder in Agile Drive

	Name	Size	Type
FOLDER00947	b28974.pdf	7.52 MB	Adobe Acrobat 7.0 Doc...
FOLDER01058	Bike2.bmp	2.3 MB	Bitmap Image
P00058	Bike5.bmp	836 KB	Bitmap Image
Recently Visited			

2. Add a file in FOLDER00947. The folder now contains four files.

Screen 2: Add a file

	Name	Size	Type
FOLDER00947	b28974.pdf	7.52 MB	Adobe Acrobat 7.0 Doc...
FOLDER01058	Bike2.bmp	2.3 MB	Bitmap Image
P00058	Bike5.bmp	836 KB	Bitmap Image
Recently Visited	export.csv	5.28 KB	Microsoft Office Excel ...

3. Wait for a few seconds and refresh (press Ctrl+F5) the Explorer view.
A **Previous Versions** folder, and a sub-folder numbered **1**, appears under FOLDER00947. This implies FOLDER00947 is the 'latest' version of File Folder object, which now has four file attachments.

Screen 3: Previous Versions Folder

	Name	Size	Type
FOLDER00947	Previous Versions		Web Folder
Previous Versions	1		
FOLDER01058	b28974.pdf	7.52 MB	Adobe Acrobat 7.0 Doc...
P00058	Bike2.bmp	2.3 MB	Bitmap Image
Recently Visited	Bike5.bmp	836 KB	Bitmap Image
	export.csv	5.28 KB	Microsoft Office Excel ...

4. Go to the folder **1** under **Previous Versions** folder.
It contains the three files that originally existed in FOLDER00947 before you added the fourth file. This implies, the 'earlier' version of the File Folder object had three file attachments.

Screen 4: Earlier/older Version Folder - '1'

	Name	Size	Type
FOLDER00947	b28974.pdf	7.52 MB	Adobe Acrobat 7.0
Previous Versions	Bike2.bmp	2.3 MB	Bitmap Image
1	Bike5.bmp	836 KB	Bitmap Image
FOLDER01058			
P00058			
Recently Visited			

5. Now, go back to FOLDER00947, which is the 'latest' version. **Delete** one of the files, say Bike2.bmp. This folder now has three files.

This implies, you have deleted a file attachment from the File Folder object.

Screen 5: Delete a File

	Name	Size	Type
FOLDER00947	Previous Versions		Web Folder
Previous Versions	b28974.pdf	7.52 MB	Adobe Acrobat 7.0 Doc
1	Bike5.bmp	836 KB	Bitmap Image
2	export.csv	5.28 KB	Microsoft Office Excel .
FOLDER01058			
P00058			
Recently Visited			

6. Wait for a few seconds and refresh (press Ctrl+F5) the Explorer view.

The **Previous Versions** folder now has two sub-folders numbered 1 and 2. This implies, the Agile Drive folder number 2 is the 'previous' version of the said File Folder object, FOLDER00947, and it has the four file attachments that existed before you deleted one.

Screen 6: Previous Version

	Name	Size	Type
FOLDER00947	b28974.pdf	7.52 MB	Adobe Acrobat 7.0 .
Previous Versions	Bike2.bmp	2.3 MB	Bitmap Image
1	Bike5.bmp	836 KB	Bitmap Image
2	export.csv	5.28 KB	Microsoft Office Exc
FOLDER01058			
P00058			
Recently Visited			

Likewise, each time you add or delete any file in an Agile Drive folder (corresponding to a Design object or File Folder object), it maintains the original files in version numbered folders under the **Previous Versions** folder.

Note You cannot add or delete files from any of the **Previous Version** folders.

If you delete, or purge, a version folder in Agile, the deleted or purged version folder does not appear in the corresponding Agile Drive folder. The number of version folders that you see depends on the settings in Agile PLM.

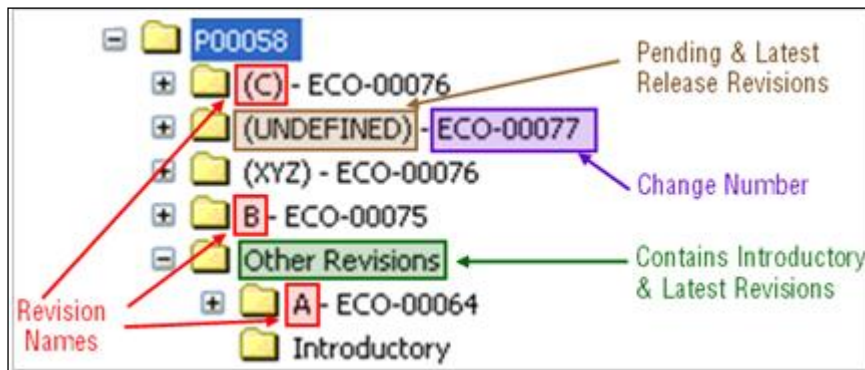
Note Refreshing (Ctrl+F5) the view in MS Windows XP Explorer does not display the changed versions in the folders (left) pane, although the changed versions appear in the right pane.

Traversing Item Revisions

A revision in Agile Drive appears as a 'prefix' to the Change object. The structure of Agile Drive folder, thus, appears as follows:

<Revision Name> - <Change Object Name>

Example: In the image below, the Agile Drive folder **B - ECO-00075** corresponds to **Revision B** of Change Object **ECO-00075** associated to Agile object **P00058**.



The Agile objects, whose revisions are not yet defined in Agile are represented as

<UNDEFINED> - <Change Object Name>

Example: In the above image, since the new Change object, **ECO-00077** has not been assigned a Revision Number, it is in the Pending state and hence appears as **(UNDEFINED) - ECO-00077** in Agile Drive.

When you create a Part, its revision state is **Introductory**. When you bring about a change to this Part, a **Revision** is created, which is identified by a **Revision Number**. Once the Revision Number is assigned, it remains in the pending state until released. The pending state is represented by enclosing the revision number in brackets.

Example: In this image, **(C) - ECO-00076**.

Other than the latest released revision, Agile Drive moves the 'earlier released revisions' into an Agile Drive folder called **Other Revisions**. Every time an Agile object goes through a Change, the latest revision appears as an Agile Drive folder under the folder for the main object.

Example: In the above image, the Agile Object **P00058** had undergone a change by means of Change object **ECO-00064**, which was revised only once as **Rev-A**. Later, it went through another change, **ECO-00075**, which was revised to **Rev-B**.

Note Agile Drive does *not* display the structure of **Design** objects.

Traversing a Bill of Material

The Bill of Material (BOM) of an Agile object appears as folders under its corresponding Change object.

In a BOM, the file attachments of a Parent object are located in the Change object. For example, the file attachments of Part **P00058** are located under the folder **B - ECO-00075**, which corresponds to the Change object of this Part.

The file attachments of a Child object are located in its corresponding folder. For example, **100-01014-A** is the child object of **P00058**.

