

**ORACLE®**

PEOPLESOFT

---

**Oracle's PeopleTools PeopleBook**

# PeopleTools 8.52: Getting Started with PeopleTools

---

**February 2012**

**ORACLE®**

Copyright © 1988, 2012, Oracle and/or its affiliates. All rights reserved.

### **Trademark Notice**

Oracle and Java are registered trademarks of Oracle and/or its affiliates. Other names may be trademarks of their respective owners.

### **License Restrictions Warranty/Consequential Damages Disclaimer**

This software and related documentation are provided under a license agreement containing restrictions on use and disclosure and are protected by intellectual property laws. Except as expressly permitted in your license agreement or allowed by law, you may not use, copy, reproduce, translate, broadcast, modify, license, transmit, distribute, exhibit, perform, publish or display any part, in any form, or by any means. Reverse engineering, disassembly, or decompilation of this software, unless required by law for interoperability, is prohibited.

### **Warranty Disclaimer**

The information contained herein is subject to change without notice and is not warranted to be error-free. If you find any errors, please report them to us in writing.

### **Restricted Rights Notice**

If this is software or related documentation that is delivered to the U.S. Government or anyone licensing it on behalf of the U.S. Government, the following notice is applicable:

U.S. GOVERNMENT END USERS: Oracle programs, including any operating system, integrated software, any programs installed on the hardware, and/or documentation, delivered to U.S. Government end users are "commercial computer software" pursuant to the applicable Federal Acquisition Regulation and agency-specific supplemental regulations. As such, use, duplication, disclosure, modification, and adaptation of the programs, including any operating system, integrated software, any programs installed on the hardware, and/or documentation, shall be subject to license terms and license restrictions applicable to the programs. No other rights are granted to the U.S. Government.

### **Hazardous Applications Notice**

This software or hardware is developed for general use in a variety of information management applications. It is not developed or intended for use in any inherently dangerous applications, including applications that may create a risk of personal injury. If you use this software or hardware in dangerous applications, then you shall be responsible to take all appropriate failsafe, backup, redundancy, and other measures to ensure its safe use. Oracle Corporation and its affiliates disclaim any liability for any damages caused by use of this software or hardware in dangerous applications.

### **Third Party Content, Products, and Services Disclaimer**

This software or hardware and documentation may provide access to or information on content, products and services from third parties. Oracle Corporation and its affiliates are not responsible for and expressly disclaim all warranties of any kind with respect to third-party content, products, and services. Oracle Corporation and its affiliates will not be responsible for any loss, costs, or damages incurred due to your access to or use of third-party content, products, or services.

# Contents

## Preface

<b>Getting Started with Enterprise PeopleTools Preface .....</b>	<b>vii</b>
Getting Started with Enterprise PeopleTools .....	vii
PeopleBooks and the PeopleSoft Online Library .....	vii

## Chapter 1

<b>Getting Started with Enterprise PeopleTools .....</b>	<b>1</b>
Enterprise PeopleTools Overview .....	1
Enterprise PeopleTools Implementation .....	2

## Chapter 2

<b>Development Tools .....</b>	<b>3</b>
Understanding Development Tools .....	3
PeopleSoft Application Designer .....	3
PeopleCode .....	4
PeopleSoft Application Engine .....	5
Global Technology .....	5
PeopleTools Internet Technology .....	6
PeopleSoft Documents Technology .....	6
PeopleSoft Search Technology .....	6
PeopleSoft Search Framework .....	7
PeopleSoft Search .....	7

## Chapter 3

<b>Administration Tools .....</b>	<b>9</b>
Understanding Administration Tools .....	9
PeopleTools Security .....	9
PeopleSoft Performance Monitor .....	10
PeopleSoft Diagnostic Framework .....	11
PeopleSoft Data Mover .....	11

PeopleSoft Data Archive Manager .....	12
Data Integrity Tools .....	12
PeopleTools Utilities .....	13
PeopleSoft Configuration Manager .....	13
Additional Administration Utilities .....	14
Oracle Enterprise Manager .....	14
Oracle Configuration Manager .....	14

## Chapter 4

<b>Analytic Tools .....</b>	<b>17</b>
Understanding Analytic Tools .....	17
PeopleSoft Query .....	18
PeopleSoft Analytic Calculation Engine .....	18
PeopleSoft Cube Builder .....	18
PS/nVision .....	19
BI Publisher for PeopleSoft .....	19
Crystal Reports for PeopleSoft .....	20
SQR for PeopleSoft .....	20
PeopleSoft Tree Manager .....	21
PeopleSoft Process Scheduler .....	21
Reporting Web Services .....	22

## Chapter 5

<b>Integration Tools .....</b>	<b>23</b>
Understanding Integration Tools .....	23
PeopleSoft Integration Broker .....	24
Feed Publishing Framework .....	24
PeopleSoft Component Interfaces .....	25
File Interfaces .....	26
Supported Integration Tools .....	26
Integration Testing Tools .....	27
Send Master Utility .....	27
Simple Post Utility .....	28
Automated Integration Point Testing .....	28
Transformation Test Utility .....	28
Handler Tester .....	29
Schema Tester .....	29
Enterprise Integration Utilities .....	29
Publish Utility .....	30
Error Handling Utility .....	30

Effective Date Publish Utility .....	30
Flat File Utility .....	31
XML Schema Utility .....	31
Workflow Technology .....	31
PeopleSoft MultiChannel Framework .....	32

## **Chapter 6**

<b>Lifecycle Management Tools .....</b>	<b>33</b>
Change Assistant .....	33
Change Impact Analyzer .....	34
Setup Manager .....	34
Application Designer .....	34
PeopleSoft Test Framework .....	35

## **Chapter 7**

<b>Viewing PeopleTools Within Implementation Phases .....</b>	<b>37</b>
Understanding the Phases of Implementation .....	37
Using PeopleTools within Implementation Phases .....	37

## **Chapter 8**

<b>PeopleSoft Internet Architecture .....</b>	<b>41</b>
Understanding the PeopleSoft Topology .....	41
PeopleSoft Database .....	42
PeopleSoft Application Server .....	44
Web Server .....	44
PeopleTools Development Environment .....	45
Application Access Types .....	46

<b>Index .....</b>	<b>47</b>
--------------------	-----------



# Getting Started with Enterprise PeopleTools Preface

This preface provides a general overview of the contents discussed in Getting Started with PeopleTools and discusses PeopleBooks and the Online PeopleSoft Library.

---

## Getting Started with Enterprise PeopleTools

This document is designed to introduce PeopleTools in a high-level manner and provide a structure for understanding the categories and usage of the PeopleTools technology.

---

## PeopleBooks and the PeopleSoft Online Library

A companion PeopleBook called *PeopleBooks and the PeopleSoft Online Library* contains general information, including:

- Understanding the PeopleSoft online library and related documentation.
- How to send PeopleSoft documentation comments and suggestions to Oracle.
- How to access hosted PeopleBooks, downloadable HTML PeopleBooks, and downloadable PDF PeopleBooks as well as documentation updates.
- Understanding PeopleBook structure.
- Typographical conventions and visual cues used in PeopleBooks.
- ISO country codes and currency codes.
- PeopleBooks that are common across multiple applications.
- Common elements used in PeopleBooks.
- Navigating the PeopleBooks interface and searching the PeopleSoft online library.
- Displaying and printing screen shots and graphics in PeopleBooks.
- How to manage the locally installed PeopleSoft online library, including web site folders.
- Understanding documentation integration and how to integrate customized documentation into the library.
- Application abbreviations found in application fields.

You can find *PeopleBooks and the PeopleSoft Online Library* in the online PeopleBooks Library for your PeopleTools release.





## Chapter 1

# Getting Started with Enterprise PeopleTools

This chapter provides an overview of the contents of this book.

---

## Enterprise PeopleTools Overview

Enterprise PeopleTools provides the underlying technology for PeopleSoft applications. All PeopleSoft Enterprise applications, such as Human Capital Management and Customer Relationship Management are built, deployed, and maintained using Enterprise PeopleTools.

With Enterprise PeopleTools you can:

- Develop new applications or customize existing applications.
- Administer applications that you have deployed within your organization.
- Provide decision support and reporting functionality to decision makers.
- Integrate PeopleSoft applications with other PeopleSoft applications or third party applications.

The area of Enterprise PeopleTools contains over 40 tools, utilities, and technologies. This document provides two frameworks with which you can gain a better understanding of the delivered technology, how to categorize the tools, and when to use particular tools.

### ***Enterprise PeopleTools Categories***

This framework divides the PeopleTools technologies, tools, and utilities into four categories:

- Development Tools.
- Administration Tools.
- Analytic Tools.
- Integration Tools.
- Lifecycle Management Tools.

### ***Implementation Phases***

This framework provides a sample set of implementation phases and lists the tools and technologies that are likely to be used or implemented within a particular phase. The implementation phases are:

- Installation.
- Application Configuration.
- System Configuration.
- Decision Support Configuration.
- Business Process Integration.
- Maintenance.

---

**Note.** The implementation phases in this framework are intended to help you gain a better understanding of Enterprise PeopleTools. The implementation phases in no way imply strict dependencies between phases or tools. Every implementation is unique.

---

### ***Other Sources of Information***

This section provides information to consider before you begin to use Enterprise PeopleTools. In addition to implementation considerations presented in this section, take advantage of all PeopleSoft sources of information, including the installation guides, release notes, PeopleBooks, and training courses.

### ***See Also***

[Chapter 2, "Development Tools," Understanding Development Tools, page 3](#)

[Chapter 3, "Administration Tools," Understanding Administration Tools, page 9](#)

[Chapter 4, "Analytic Tools," Understanding Analytic Tools, page 17](#)

[Chapter 5, "Integration Tools," Understanding Integration Tools, page 23](#)

[Chapter 6, "Lifecycle Management Tools," page 33](#)

[Chapter 7, "Viewing PeopleTools Within Implementation Phases," page 37](#)

---

## **Enterprise PeopleTools Implementation**

Implementing Enterprise PeopleTools requires the installation of the PeopleTools software within a supported environment as described in the Enterprise PeopleTools Installation documentation.

### ***See Also***

*PeopleTools 8.52 Installation* for your database platform

PeopleTools Hardware and Software Requirements

[http://download.oracle.com/docs/cd/E18373\\_01/psft/html/doclist.html](http://download.oracle.com/docs/cd/E18373_01/psft/html/doclist.html)

<https://metalink3.oracle.com/od/faces/secure/km/DocumentDisplay.jspx?id=747587.1>

## Chapter 2

# Development Tools

This section provides overview information and discusses:

- PeopleSoft Application Designer.
- PeopleCode.
- PeopleSoft Application Engine.
- Global Technology.
- PeopleTools Internet Technology.
- PeopleSoft Documents Technology.
- PeopleSoft Search Technology.

---

## Understanding Development Tools

The development tools that Enterprise PeopleTools provides offer a powerful application development environment in which you can build and customize PeopleSoft applications to suit your specific enterprise needs quickly and easily. By using Enterprise PeopleTools development tools you can complete a variety of tasks including:

- Design and define application objects.
- Enable applications to serve different locations and languages while sharing the same data.
- Define end-to-end processes in a user-friendly, graphical design environment.

---

## PeopleSoft Application Designer

PeopleSoft Application Designer is a metadata driven, interactive development environment (IDE) used to customize PeopleSoft applications.

Every PeopleSoft application contains a collection of related definitions, such as fields, records, pages, and components that work together to provide the functionality of PeopleSoft applications. Developing and adapting PeopleSoft applications is a step-by-step process in which you configure and build the definitions, establish relationships among definitions, implement security, register your PeopleSoft application to the PeopleTools portal environment, and test every aspect thoroughly.

To perform the majority of these development activities, you use one interactive tool, PeopleSoft Application Designer. The PeopleSoft Application Designer is an integrated development environment that enables you to work with the numerous definitions of a business application in a single work area.

PeopleSoft Application Designer enables you to perform numerous development tasks including:

- Create and modify field and record definitions.
- Build and run SQL scripts that create and alter tables and indexes.
- Create and debug PeopleCode.
- Create and modify pages for the user interface.
- Create and modify components (groups of pages).
- Work with style sheets to customize the appearance of applications.
- Upgrade your existing applications to newer PeopleSoft versions.

### **See Also**

*PeopleTools 8.52: PeopleSoft Application Designer Developer's Guide*, "Getting Started with PeopleSoft Application Designer"

---

## **PeopleCode**

PeopleCode is the PeopleSoft proprietary integrated programming language that touches virtually every aspect of PeopleSoft applications. For example, with PeopleCode you can:

- Control presentation of information to the user.
- Implement complex business logic that cannot be defined with metadata.
- Validate user inputs.
- Perform calculations and data manipulation.
- Maintain data integrity.
- Update database tables.
- Manage portal navigation.
- Integrate with other PeopleSoft applications.
- Integrate with third-party applications.
- Manage workflow.
- Administer security.

PeopleCode enables you to create programs using structured and object-oriented techniques. PeopleSoft delivers numerous PeopleCode functions, classes, methods, and APIs.

**See Also**

*PeopleTools 8.52: PeopleCode Developer's Guide, "Getting Started with PeopleCode"*

---

## PeopleSoft Application Engine

PeopleSoft Application Engine enables you to develop, test, and run Application Engine programs. You use PeopleSoft Application Engine to develop batch or online programs that perform high-volume, background processing against your data.

In PeopleSoft Application Engine, a program is a set of SQL statements, PeopleCode, and program control actions that enable looping and conditional logic. Common batch programming needs, like parallel processing and restartability, are built into PeopleSoft Application Engine programs.

You define PeopleSoft Application Engine programs in PeopleSoft Application Designer.

**See Also**

*PeopleTools 8.52: Application Engine, "Getting Started With Application Engine"*

---

## Global Technology

PeopleSoft applications are built on a robust global framework enabling you to deploy your applications across the globe. Enterprise PeopleTools is designed so that a single implementation can serve users in different regions. Users can share the same data while operating in different languages and applying different date, time, and numeric formatting conventions.

PeopleSoft's global technology provides the core global abilities that are common to all PeopleSoft application products enabling you to:

- Operate in your own language.
- Apply different numeric formatting.
- Use any currency and market rate.
- Support multiple languages in a single database.
- Display formatted data using standards that users expect based on their language and country.
- Deploy systems spanning multiple time zones.

**See Also**

*PeopleTools 8.52: Global Technology, "Getting Started with Global Technology"*

---

## PeopleTools Internet Technology

The Enterprise PeopleTools internet technologies are a multiplicity of internet-specific tools that enable you to create and manage your PeopleSoft applications and their components in the portal environment.

PeopleSoft Pure Internet Architecture enables internet application deployment through a browser, and enables you to take advantage of PeopleSoft intranet solutions, and integration technologies. PeopleSoft Pure Internet Architecture runs seamlessly in portals created and managed by PeopleSoft portal technologies.

The foundation of PeopleTools portal technology is the PeopleSoft Pure Internet Architecture, which provides you with the ability to easily access and administer a broad range of content providers, such as PeopleSoft applications like CRM and HCM, as well as non-PeopleSoft content. It enables you to combine content from a variety of sources and deliver that content to your application in an elegant, unified, intuitive, user-friendly interface.

### **See Also**

*PeopleTools 8.52: PeopleTools Portal Technologies, "Getting Started with PeopleTools Portal Technologies"*

---

## PeopleSoft Documents Technology

PeopleSoft documents technology includes a Document Builder, a PeopleCode API, and several utilities that enable you to create, manage, and test documents.

The Document Builder enables you to build XML documents from the ground up, by importing schema definitions, or from PeopleSoft table definitions. A PeopleCode API is provided to enable you to populate and retrieve document data. PeopleSoft delivers a number of document utilities to help you validate documents during and after construction, validate schema, resolve copy project, import, and upgrade metadata issues, and more.

Extensible Markup Language (XML) is the default physical representation of PeopleSoft documents.

Documents are used to simplify integrations with third-party integration partners, as an alternative to using stand-alone rowsets, as a mechanism to distribute complex data, and more.

### **See Also**

*PeopleTools 8.52: PeopleSoft Documents Technology, "Getting Started with PeopleSoft Documents Technology"*

---

## PeopleSoft Search Technology

PeopleSoft Search Technology consists of these features:

- PeopleSoft Search Framework
- PeopleSoft Search

**See Also**

*PeopleTools 8.52: PeopleSoft Search Technology*

## PeopleSoft Search Framework

The PeopleSoft Search Framework enables application developers and implementation teams, to create search artifacts in a declarative manner, using PeopleSoft Query and Connected Query and to deploy and maintain searchable objects, using one standard interface, regardless of PeopleSoft application. The PeopleSoft Search Framework consists of PeopleSoft components (pages and records provided by PeopleTools), which provide a centralized interface for configuring PeopleSoft integration with the search engine, creating search definitions, search categories, and building and maintaining search indexes.

---

**Note.** The PeopleSoft Search Framework relies on Oracle Secure Enterprise Search (SES) for all search engine tasks.

---

## PeopleSoft Search

Once Search Framework is configured you can enable these PeopleSoft Search features for your end users:

- Application Search.
- Search Pages.

With Application Search enabled, a Application Search bar displays in the header of the PeopleSoft application. The Application Search bar provides a dropdown list for selecting a specific search category against which to run a search. The results enable the end user to navigate to the appropriate record or transaction simply by clicking a link.

If you've enabled the Search Pages features, a Keyword Search tab appears amongst the search pages the end user encounters when navigating into a component. The Keyword Search page enables users to execute a deeper, more free-form search to access application data than the traditional "Find an Existing Value" tab. The traditional "Find an Existing Value" tab is limited to level 0 data, where the Keyword Search tab lets the users enter custom keywords and the system will search indexed data from level 0-3.





## Chapter 3

# Administration Tools

This chapter provides overview information and discusses:

- PeopleTools Security.
- PeopleSoft Performance Monitor.
- PeopleSoft Diagnostic Framework.
- PeopleSoft Data Mover.
- Data Integrity Tools.
- PeopleTools Utilities.
- PeopleSoft Configuration Manager.
- Additional administration utilities.

---

## Understanding Administration Tools

With Information Technology infrastructure becoming more complex, Enterprise PeopleTools offers the state-of-the-art tools to make maintenance easy and cost-effective. The Enterprise PeopleTools administration tools enable system administrators to manage the applications you have deployed within your organization. The administration tools enable you to perform numerous administrative tasks, such as configure security, monitor performance, troubleshoot, upgrade to new versions, apply patches, and transfer data from target to source systems. Most of the tasks can be completed using the same browser interface used for completing business transactions in PeopleSoft applications.

---

## PeopleTools Security

The PeopleSoft security approach is tailored for the internet. As you implement PeopleSoft, you need a robust and scalable means by which you can grant authorization to users efficiently. When you deploy your applications to the internet, the number of potential users of your system increases exponentially. Suddenly, you have customers, vendors, suppliers, employees, and prospects all using the same system.

Just as PeopleTools provides the foundation for PeopleSoft applications, PeopleTools security provides the foundation for PeopleSoft security and for managing the user life cycle within the application.

You can apply security to all users, including employees, managers, customers, contractors, and suppliers. You group your users according to roles to give them different degrees of access. For instance, there might be an Employee role, a Manager role, and an Administrator role. PeopleTools security enables you to manage the role-based system, including directory group import capabilities, to leverage your Lightweight Directory Access Protocol (LDAP) directory facilities.

Users who belong to a particular role require a specific set of permissions, or authorizations, within your system so that they can complete their daily tasks. Because of the increase in users due to the internet deployment, PeopleTools security enables you to perform numerous maintenance tasks programmatically, which enables your system administrators to focus on other tasks. PeopleTools security also delivers robust encryption methods to provide additional custom data protection.

PeopleTools security also provides the capability for easily integrating enterprise user management and access applications like Oracle Access Manager and Oracle Identity Manager.

Additionally PeopleTools security implements the WS-Security framework to protect web services-based integrations.

### **See Also**

*PeopleTools 8.52: Security Administration, "Getting Started with Security Administration"*

---

## **PeopleSoft Performance Monitor**

PeopleSoft Performance Monitor is a built-in diagnostic utility that enables system administrators to monitor performance of the main elements of your PeopleSoft system, such as web servers, application servers, and PeopleSoft Process Scheduler servers. You can monitor real-time performance as well as analyze historical data.

PeopleSoft Performance Monitor reports:

- Durations and key metrics of PeopleTools runtime execution, such as SQL statements and PeopleCode events.
- Key resource metrics, such as host CPU utilization and web server execution threads.

The metrics provided by PeopleSoft Performance Monitor enable system administrators to:

- Monitor real-time system performance.
- Identify poorly performing tiers, hosts, domains, servers, application code, and SQL in a PeopleSoft environment.
- Identify performance trends.
- Address and isolate performance bottlenecks.

### **See Also**

*PeopleTools 8.52: Performance Monitor, "Getting Started with Performance Monitor"*

---

## PeopleSoft Diagnostic Framework

The PeopleSoft Diagnostic Framework is designed to facilitate the diagnosis and resolutions of incidents by Oracle Global Customer Support. It enables the critical system data to be packaged and sent to PeopleSoft Global Support Center without the need for IT intervention. This reduces administration overhead and can help PeopleSoft solve customer issues more quickly.

The diagnostic framework retrieves diagnostic information from a PeopleSoft database enabling you to:

- Discover problematic application-related data.
- Explore setup details.
- Present information to PeopleSoft support in a common format.

### **See Also**

*PeopleTools 8.52: Data Management*, "Getting Started with Data Management"

---

## PeopleSoft Data Mover

PeopleSoft Data Mover enables the database administrator or system programmer to perform a number of functions, including:

- Transfer application data between PeopleSoft databases.
- Move PeopleSoft databases across operating systems and database platforms.
- Execute Structured Query Language (SQL) statements against any PeopleSoft database, regardless of the underlying operating system or database platform.
- Create, edit, and run scripts.

PeopleSoft Data Mover provides a development interface that enables you to create scripts using specific commands. You can run scripts from the development environment or from a command line. You use PeopleSoft Data Mover during the PeopleSoft installation, but it is also used for a variety of maintenance tasks.

### **See Also**

*PeopleTools 8.52: Data Management*, "Getting Started with Data Management"

---

## PeopleSoft Data Archive Manager

In any enterprise application, the ability to purge and archive transactional data is critical to data management. You need to have consistent methods to archive transactional data before your database increases to unmanageable sizes. PeopleSoft Data Archive Manager provides an integrated and consistent framework for archiving data from PeopleSoft applications. Using a predefined template, you can select any queries and multiple objects that meet your archiving and restoration requirements. Leveraging the Archive Query in PeopleSoft Query, you can easily define and customize your archive template.

### See Also

*PeopleTools 8.52: Data Management, "Using PeopleSoft Data Archive Manager"*

---

## Data Integrity Tools

PeopleSoft provides several tools to ensure the integrity of the data that is stored in the PeopleSoft system. Typically, you use these tools during installations, upgrades, and system configuration to verify the PeopleSoft system and compare it to the underlying SQL objects to ensure synchronization. Data Integrity tools include:

<b>SYSAUDIT</b>	The System Audit (SYSAUDIT) identifies orphaned PeopleSoft objects and other inconsistencies within the system. An example of an orphaned object is a module of PeopleCode that exists, but which does not relate to any other objects in the system.
<b>DDDAUDIT</b>	The Database Audit Report (DDDAUDIT) finds inconsistencies between PeopleTools record and index definitions and the database objects. This audit focuses on tables, views, and indexes.
<b>SQL Alter</b>	The PeopleSoft Application Designer SQL Alter function brings SQL tables into accordance with PeopleTools record definitions.

### See Also

*PeopleTools 8.52: System and Server Administration, "Getting Started with System and Server Administration"*

*PeopleTools 8.52: System and Server Administration, "Using PeopleTools Utilities," Using Audit Utilities*

---

## PeopleTools Utilities

As you work with the PeopleSoft system, you find that there are some administrative tasks that you only need to perform occasionally. The PeopleTools Utilities provide a set of tools for accomplishing some of these more infrequent tasks. Although use of these utilities may be infrequent, they provide an easy means to manage important aspects of your PeopleSoft environment. Examples of tasks that require the use of the PeopleTools Utilities are:

- Setting your base language.
- Specifying a specific style sheet.
- Setting PeopleBook Help locations.
- Editing messages in the message catalog.
- Entering values in the URL catalog.
- Setting PeopleCode and SQL trace options.

### **See Also**

*PeopleTools 8.52: System and Server Administration*, "Getting Started with System and Server Administration"

*PeopleTools 8.52: System and Server Administration*, "Using PeopleTools Utilities"

---

## PeopleSoft Configuration Manager

PeopleSoft Configuration Manager simplifies Windows workstation administration by enabling you to adjust PeopleSoft registry settings from one central location. Note that the Configuration Manager applies only to workstations being used by developers and system administrators who need access to the development environment. For example, developers who need to access PeopleSoft Application Designer to view and modify pages, records, components and so on need the appropriate options set in the PeopleSoft Configuration Manager.

PeopleSoft Configuration Manager contains a variety of controls that let you set up workstations for connecting to the database, connecting to application servers, or setting trace options. You can set up one development workstation to reflect the environment at your site, and then export the configuration file, which can be shared among all the development workstations at your site.

### **See Also**

*PeopleTools 8.52: System and Server Administration*, "Getting Started with System and Server Administration"

*PeopleTools 8.52: System and Server Administration*, "Using PeopleSoft Configuration Manager"

---

## Additional Administration Utilities

With Enterprise PeopleTools, you can also take advantage of:

- Oracle Enterprise Manager.
- Oracle Configuration Manager.

### Oracle Enterprise Manager

Oracle Enterprise Manager provides a comprehensive, integrated management solution that helps you achieve high levels of performance and availability, and reduce the costs of managing applications. Oracle Enterprise Manager monitors the health of all application components, the hosts that they run on, and the key business processes that they support. Oracle Enterprise Manager's diagnostic tools help to identify system issues for you to address. In addition to monitoring and diagnostics, Oracle Enterprise Manager also manages the configuration of application environments through its integrated configuration management tool. This tool provides the ability to configure application environments properly by keeping an inventory of application and infrastructure components, tracking the changes that are made, and validating the changes to make sure that they are correct. Oracle Enterprise Manager provides the tools that help organizations achieve the required application performance and availability, improve management productivity, better utilize resources, and drive down costs.

To integrate the Oracle Enterprise Manager with your PeopleSoft implementation, you can install the PeopleSoft Enterprise Environment Management Plug-in for Oracle Enterprise Manager (licensed separately from PeopleTools).

#### See Also

This document on [oracle.com](http://www.oracle.com/enterprise_manager/index.html): *PeopleSoft Enterprise Environment Management Plug-in for Oracle Enterprise Manager Implementation Guide*

[http://www.oracle.com/enterprise\\_manager/index.html](http://www.oracle.com/enterprise_manager/index.html)

### Oracle Configuration Manager

Oracle Configuration Manager is used to collect configuration information from your environment and store that information at Oracle to provide you proactive resolutions to issues affecting your specific environment. During your PeopleTools installation, you have the option of installing Oracle Configuration Manager along with PeopleTools. Oracle Configuration Manager, working in conjunction with Software Configuration Manager (SCM), enables Oracle to deliver:

- Faster time to problem resolution.
- Service Request (SR) management and tracking for your configurations.
- Security patch advice and health checks specific to your configurations.
- Knowledge content tailored for your configurations.

---

**Note.** There is no relationship between PeopleSoft Configuration Manager and Oracle Configuration Manager. PeopleSoft Configuration Manager is used only for configuring development workstations.

---

### **See Also**

*PeopleTools Installation Guide* <for your platform>

<http://www.oracle.com/technology/documentation/ocm.html>





## Chapter 4

# Analytic Tools

This chapter contains overview information and discusses:

- PeopleSoft Query.
- PeopleSoft Analytic Calculation Engine.
- PeopleSoft Cube Builder.
- BI Publisher for PeopleSoft.
- PS/nVision.
- Crystal Reports for PeopleSoft.
- SQR for PeopleSoft.
- PeopleSoft Tree Manager.
- PeopleSoft Process Scheduler.

---

## Understanding Analytic Tools

The PeopleSoft analytic tool solutions span the wide-ranging information access needs of your organization, from end-user querying and exploration, to multidimensional reporting and analysis, to production reporting.

These include the standard reports we deliver, as well as the reporting tools you can use to customize reports or create new ones. Enterprise PeopleTools reporting and decision support capabilities enable you to perform numerous tasks, such as create queries, create reports, and create online analytical processing (OLAP) cubes.

Your database contains a wealth of information that you've carefully entered, maintained, and secured for the ultimate purpose of generating timely, meaningful, presentation-quality reports as well as provide online analytical options. Our reporting and decision support capabilities enable you to access the data you need and present it in the form that is most useful for the decision makers in your organization.

---

## PeopleSoft Query

PeopleSoft Query provides a user friendly, intuitive way to quickly generate ad-hoc and scheduled reports from any data stored in your PeopleSoft tables. Users can design and run queries using any supported web browser. Designers of queries do not need to write or be familiar with Standard Query Language (SQL). In addition, users who are less technically savvy can run predefined queries. Queries can be as simple or as complex as necessary. You can run queries from a web browser and then download the data as a Microsoft Excel spreadsheet.

### **See Also**

*PeopleTools 8.52: PeopleSoft Query, "Getting Started with PeopleSoft Query"*

---

## PeopleSoft Analytic Calculation Engine

PeopleSoft Analytic Calculation Engine combines a calculation engine plus several Enterprise PeopleTools features that enable application developers to define both the calculation rules and the display of calculated data within PeopleSoft applications. The calculated data is used for the purposes of multidimensional reporting, data editing, and analysis.

Application developers create *analytic models* which define the rules used to calculate data. To display the data to end users, application developers create PeopleSoft pages that include a specific type of grid—an analytic grid.

End users can view, analyze, and even make changes to analytic model data. When end users save any changes made to the analytic model, PeopleSoft Analytic Calculation Engine recalculates the data and sends the calculated data to the application database.

### **See Also**

*PeopleTools 8.52: Analytic Calculation Engine, "Getting Started with Oracle's PeopleSoft Analytic Calculation Engine"*

---

## PeopleSoft Cube Builder

PeopleSoft Cube Builder provides a framework for modeling your OLAP cubes through its design tools. This framework enables you to manage dimensions, attributes, measures, and cubes that you might want to build from PeopleSoft sources. All of these definitions can be shared across cubes to ensure that OLAP results are consistent across your enterprise.

What you design in PeopleSoft Cube Builder can be used across all target OLAP platforms supported by PeopleSoft. The majority of a cube's design attributes can be applied to Hyperion Essbase. PeopleSoft Cube Builder also enables you to leverage your existing PeopleSoft metadata to define the cube structure.

**See Also**

*PeopleTools 8.52: PeopleSoft Cube Builder, "Getting Started with PeopleSoft Cube Builder"*

---

## PS/nVision

PS/nVision is a sophisticated tool for creating business reports in Microsoft Excel. Working within Microsoft Excel, you create a report layout that defines both the data to retrieve and the format of the report. Using PS/nVision, you can create report layouts that summarize information from your PeopleSoft database and use the drill down feature to expose the supporting details. You can share report layouts across multiple business units and time periods, creating reports that "roll" from unit to unit or period to period without changing the data-retrieval criteria.

PS/nVision works within spreadsheets. You access PS/nVision features from a special PS/nVision menu within Microsoft Excel to create templates (layouts) for data retrieval. Once you create a report layout (XNV file), you can use it to automatically format data. PS/nVision selects data from your PeopleSoft database using ledgers, trees, and queries.

PS/nVision enables you to extend the rich querying features that PeopleSoft Query offers. For example:

- With PeopleSoft Query you can generate tabular reports without formatting, and with PS/nVision you can deliver well formatted, easy-to-read reports.
- PS/nVision enables you to produce matrix reports in which you can use multiple ledgers or queries to define the reports.
- PS/nVision provides dynamic features, such as bursting and nPlosion, unavailable in static query results.
- PS/nVision offers built-in logic to detect detailed ledger metadata in multiple financial environments.

**See Also**

*PeopleTools 8.52: PS/nVision, "Getting Started with PS/nVision"*

---

## BI Publisher for PeopleSoft

Oracle provides a standalone Java-based reporting technology named BI Publisher (BIP) that streamlines report and form generation. Enterprise PeopleTools is leveraging this technology with BI Publisher for PeopleSoft Enterprise, which provides native BIP technology for PeopleSoft Query as well as any PeopleSoft application.

BIP separates the data extraction process from the report layout. BIP provides the ability to design and create report layout templates with the more common desktop applications of Microsoft Word and Adobe Acrobat, and renders XML data based on those templates. With a single template, you can generate reports in many formats (PDF, RTF, Excel, HTML, and so on) and in many languages.

BI Publisher for PeopleSoft provides an environment for the power business user to manage templates, data sources, reports, translations, content components, and to produce reports according to a user-defined criteria. BI Publisher for PeopleSoft also can burst reports, such as annual wage statements for employees, electronically.

**See Also**

*PeopleTools 8.52: BI Publisher for PeopleSoft, "Getting Started with BI Publisher"*

---

## Crystal Reports for PeopleSoft

Crystal Reports enable you to generate clear and easy-to-read reports presenting data from your PeopleSoft applications. You can generate standard reports already created and saved in Crystal, or you can create your own custom reports.

Generating formatted output in Crystal involves two steps. First you create and save queries in PeopleSoft Query, and then you create report definitions in Crystal to format the fields (columns) used in the queries. You can generate reports in a variety of different formats, including text files, Microsoft Word documents, and spreadsheets.

**See Also**

*PeopleTools 8.52: Crystal Reports for PeopleSoft, "Getting Started with Crystal Reports for PeopleSoft"*

---

## SQR for PeopleSoft

SQR for PeopleSoft is a powerful enterprise reporting system that provides direct access to multiple data sources. The SQR for PeopleSoft tools make it possible to create clear, professional reports from complex arrays of information systems.

SQR is a specialized programming language for accessing, manipulating, and reporting enterprise data. With SQR, you build complex procedures that perform multiple calls to multiple data sources and implement nested, hierarchical, or object-oriented program logic.

The high-level programming capabilities that SQR provides enable you to add procedural logic and control to data source calls. You can use SQR to write other types of applications, such as those for database manipulation and maintenance, table loading and unloading, and interactive querying and displaying.

**See Also**

*PeopleTools 8.52: SQR for PeopleSoft Developers, "Getting Started with SQR for PeopleSoft"*

---

## PeopleSoft Tree Manager

The PeopleSoft Tree Manager enables you to arrange data into a hierarchal format that can then be used in other areas, such as report generators, OLAP, chartfield field combination editing in PeopleCode, and security. Casual users have a familiar and easy-to-understand interface, as well as all of the functionality required for creating and maintaining trees.

PeopleSoft Tree Manager enables you to:

- Present summarization rules visually.
- Give the system a single place to look for summarization rules.
- Provide simpler selection and updating of values in reports, ledgers, or security profiles.

### See Also

*PeopleTools 8.52: PeopleSoft Tree Manager, "Getting Started with PeopleSoft Tree Manager"*

---

## PeopleSoft Process Scheduler

PeopleSoft Process Scheduler enables you to schedule and manage the execution of PeopleSoft batch processes. With PeopleSoft Process Scheduler you can:

- Schedule recurring processes to run on any date or time interval that your business requires, such as monthly, daily, hourly, or by the minute.
- Create jobs (groups of processes) that run several processes and conditionally schedule successive processes based on the status of a previous process in the job.

The primary role of Process Scheduler is to support the PeopleSoft application environment. With a PeopleSoft application, you might want to run certain processes (batch programs, reports, and so on) behind the scenes of the online system. Running reports, posting journal entries, loading benefit enrollment forms, and calculating payroll deductions are all examples of processes that you might want to perform offline.

Using PeopleSoft Process Scheduler can streamline your business practices by enabling you to take advantage of the distributed computing environment at your site, whereby you can schedule performance-sensitive jobs to run on a powerful server while the online system is still available to end users.

---

**Note.** While the PeopleSoft Process Scheduler runs all types of online and offline programs, it's primarily used to support your reporting environment.

---

### See Also

*PeopleTools 8.52: PeopleSoft Process Scheduler, "Getting Started With PeopleSoft Process Scheduler"*

---

## Reporting Web Services

Reporting Web Services are services published through the Integration Broker that can be consumed by third-party applications to facilitate creating and running reports on the PeopleSoft system. Web Services are available for Query Access and Process Scheduler. Each web service contains multiple service operations to perform specific tasks relating to reporting.

### **See Also**

*PeopleTools 8.52: Reporting Web Services, "Understanding Query Access Service"*

## Chapter 5

# Integration Tools

This chapter provides overview information and discusses:

- PeopleSoft Integration Broker.
- Feed Publishing Framework.
- PeopleSoft Component Interfaces.
- File Interfaces.
- Supported Integration Tools.
- Integration testing tools.
- Enterprise integration utilities.
- Workflow Technology.
- MultiChannel Framework.

---

## Understanding Integration Tools

IT departments are challenged by:

- Multiple types of disparate systems.
- Lack of communication standards.
- Islands of automation (business applications) operating unaware of each other.

These conditions can lead to:

- Duplicate data entry.
- Unavailable or inaccurate information.
- Inefficient operations.

The Enterprise PeopleTools integration tools enable you to share information seamlessly with other PeopleSoft applications, third party ERP vendors, legacy applications, and your business partners.

---

## PeopleSoft Integration Broker

PeopleSoft Integration Broker provides service oriented architecture (SOA) technology that facilitates the transmission of synchronous and asynchronous service operations. Use the PeopleSoft Integration Broker to:

- Perform asynchronous and synchronous messaging among internal systems and third-party systems.
- Expose PeopleSoft business logic as web services to PeopleSoft and third-party systems.
- Consume and invoke web services from third-party and PeopleSoft systems.

The two major components of PeopleSoft Integration Broker are the integration gateway and the integration engine. The integration gateway is a platform that manages the receipt and delivery of service operations passed among systems through PeopleSoft Integration Broker. The integration engine is an application server process that routes service operations to and from PeopleSoft applications as well as transforms the structure of service operations and translates data according to specifications that you define.

PeopleSoft Integration Broker offers the following benefits:

- PeopleSoft Integration Broker is provided with PeopleTools so you don't need to purchase additional, third party integration tools.
- Consistent infrastructure using PeopleSoft Application Servers and web servers.
- Ability to reuse development staff skills.
- "Out-of-the-box" integration to all PeopleSoft applications.
- Supports all major integration methods, such as web services.

### See Also

*PeopleTools 8.52: PeopleSoft Integration Broker, "Getting Started with PeopleSoft Integration Broker"*

---

## Feed Publishing Framework

The Feed Publishing Framework provides user interfaces and APIs for feed definition creation and maintenance, feed searching and subscription, as well as feed document generation and delivery.

A web feed, news feed, or feed is a data format that provides users with access to frequently updated content. A feed contains entries, which might be headlines, full-text articles, excerpts, summaries, digital media, and links to content on a web site, along with various metadata. PeopleSoft applications, news organizations, external web sites, and other content distributors publish or syndicate web feeds, which enables users to subscribe to them.

The Feed Publishing Framework provides:

- A set of APIs and code samples to assist application developers in creating new type of feeds and integrating them with existing features



- Unified interfaces for content owners and administrative users to create, configure, and maintain feed definitions of various types.
- Interfaces for end users to discover related feeds and search feed definitions.

**See Also**

*PeopleTools 8.52: Feed Publishing Framework*, "Getting Started With the Feed Publishing Framework"

---

## PeopleSoft Component Interfaces

Component interfaces provide a way to access the PeopleSoft database without using a graphical user interface. A component interface encapsulates a PeopleSoft component, which is a logical grouping of PeopleSoft pages representing a complete business transaction. You create component interfaces using PeopleSoft Application Designer.

A PeopleSoft component provides all of the business rules, through PeopleCode and edits, for interacting with the PeopleSoft database. Components are based on pages and are presented to the user to view and update with a browser. The component interface takes this same functionality and exposes it to third-party systems without using a graphical user interface.

Component interfaces:

- Enforce all of the business rules defined on the component.
- Provide synchronous access to the PeopleSoft database.
- Provide access to PeopleSoft components through APIs.

Component interfaces expose the rich functionality delivered in the hundreds of components within PeopleSoft products. A component is an atomic transaction that implements a business process or function. A component interface provides real-time synchronous access to the PeopleSoft business rules and data associated with a business component.

The interface is exposed via standard access methods: Java, C/C++, COM, SOA, and CORBA (through partnership). Component interfaces encapsulate PeopleSoft data and business processes, and they hide the details of the structure and implementation of the underlying page and data. The actual interface consists of a set of clearly defined properties and methods that follow an object-oriented programming model. External applications can access component data only by using the properties or methods specified in the component interface.

**See Also**

*PeopleTools 8.52: PeopleSoft Component Interfaces*, "Getting Started with PeopleSoft Component Interfaces"

---

## File Interfaces

File-based integrations provide the ability to exchange files with third-party systems or legacy systems that do not support messaging. Files are exchanged using file layouts or PeopleSoft Application Engine programs. File layouts are used to graphically define where data is located in a file. The file definition layout is then accessible to the PeopleSoft Application Engine program to import or export the file.

The File class provides methods and properties for reading from and writing to external files. Most application interfaces to files require complex parsing of file data. Files that allow for this kind of complexity in a PeopleSoft application are based on a File interface.

A File Interface is a definition (or mapping) of a file to be processed. It identifies where data fields are located in the file. This powerful interface enables application developers to access data from a file as they would a message or a page buffer (scroll). There is no need to parse each file record into fields.

File interfaces are unique to a specific format and may only process that particular type of formatted file. The definition created in Application Designer retains a consistent look and feel regardless of format.

File layouts support the following file types:

- Fixed format sequential files.
- Comma delimited files.
- XML files.

### See Also

*PeopleTools 8.52: PeopleSoft Application Designer Developer's Guide*, "Getting Started with PeopleSoft Application Designer"

*PeopleTools 8.52: PeopleSoft Application Designer Developer's Guide*, "Constructing File Layouts and Performing Data Interchanges"

---

## Supported Integration Tools

PeopleSoft supports these additional integration utilities:

- EDI Manager.
- Outgoing Forms API.
- Open Query ODBC Driver and API.

Electronic Data Interchange (EDI) is a standard means of exchanging data between companies so they can transact business electronically. For example, using EDI a company can submit an order to a vendor, and the vendor can acknowledge and fulfill the order without any paper changing hands or any contact between company representatives.

With PeopleSoft Application Designer, you can implement routings, which transfer data from one step in a business process to another. One type of routings is a forms routing. With a forms routing, the system takes data from a PeopleSoft page the user is working on, enters it onto a third-party form, and mails the completed form to designated users by means of the forms product's mail capabilities.

The PeopleSoft Open Query ODBC driver and API allow third-party reporting tools or applications to access PeopleSoft data in conformance with the PeopleSoft Query access architecture (the embedded SQL access intelligence provided by PeopleSoft Query).

### **See Also**

*PeopleTools 8.52: Supported Integration Technologies*, "Getting Started with Supported Integration Technologies"

---

## **Integration Testing Tools**

PeopleSoft provides these tools for testing your integration development:

- Send Master Utility.
- Simple Post Utility.
- Automated integration point testing.
- Transformation Test Utility.
- Handler Tester.
- Schema Tester.

### **Send Master Utility**

The Send Master utility enables you to test PeopleSoft Integration Broker messaging interactions with PeopleSoft and third-party web servers, application servers, and integration gateways. It can test listening connector functionality, target connector functionality, connector introspection and transactions. Send Master enables you to post any data format, including the PeopleSoft Multipurpose Internet Mail Extensions (MIME) message format, to web and application servers over HTTP and HTTPS. You can also use Send Master to simultaneously test groups of different types of messages, as well as stress test your system.

### **See Also**

*PeopleTools 8.52: Integration Broker Testing Utilities and Tools*, "Getting Started with PeopleSoft Integration Testing Utilities and Tools"

*PeopleTools 8.52: Integration Broker Testing Utilities and Tools*, "Using the Send Master Utility"

## Simple Post Utility

The Simple Post utility enables you to use shell scripts or a Java API to post XML messages from third-party systems to the integration gateway. The utility wraps the incoming messages in the PeopleSoft XML wrapper format and posts them to the HTTP listening connector. The Simple Post utility reads ASCII, UTF-8 and UTF-16 file formats for incoming messages and converts them to UTF-8 to send to the integration gateway.

### See Also

*PeopleTools 8.52: Integration Broker Testing Utilities and Tools*, "Getting Started with PeopleSoft Integration Testing Utilities and Tools"

*PeopleTools 8.52: Integration Broker Testing Utilities and Tools*, "Using the Simple Post Utility"

## Automated Integration Point Testing

PeopleSoft provides a means for automated integration point testing. You can perform automated integration point testing as a means to unit test, perform cross-application business process testing, or regression test integration points. Automated integration point testing is suitable for testing integration points between PeopleSoft systems, PeopleSoft systems and third-party systems, and PeopleSoft systems and open interfaces. You can use automated integration point testing with the following PeopleSoft integration technologies:

- Messaging, including asynchronous and synchronous publishing and subscribing.
- Component interfaces.
- Flat files.
- Staging tables.

### See Also

*PeopleTools 8.52: Integration Broker Testing Utilities and Tools*, "Getting Started with PeopleSoft Integration Testing Utilities and Tools"

*PeopleTools 8.52: Integration Broker Testing Utilities and Tools*, "Using Automated Integration Point Testing"

## Transformation Test Utility

PeopleSoft Integration Broker provides the Transformation Test utility, which you can use to test Application Engine transform programs without sending messages, and with minimal development effort.

**See Also**

*PeopleTools 8.52: Integration Broker Testing Utilities and Tools*, "Getting Started with PeopleSoft Integration Testing Utilities and Tools"

*PeopleTools 8.52: Integration Broker Testing Utilities and Tools*, "Using the Transformation Test Utility"

## Handler Tester

The Handler Tester allows you to test handlers defined for rowset-based and nonrowset-based service operations from within the PeopleSoft Pure Internet Architecture. You can test handlers without setting up a routing, without having pub/sub booted on your application server, and without impacting other developer activity on the system.

**See Also**

*PeopleTools 8.52: Integration Broker Testing Utilities and Tools*, "Getting Started with PeopleSoft Integration Testing Utilities and Tools"

*PeopleTools 8.52: Integration Broker Testing Utilities and Tools*, "Using the Handler Tester Utility"

## Schema Tester

The Schema Tester Utility enables you to validate rowset-based and nonrowset-based messages against message schemas during development to determine if messages adhere to defined message schemas.

**See Also**

*PeopleTools 8.52: Integration Broker Testing Utilities and Tools*, "Getting Started with PeopleSoft Integration Testing Utilities and Tools"

*PeopleTools 8.52: Integration Broker Testing Utilities and Tools*, "Using the Schema Tester Utility"

---

## Enterprise Integration Utilities

In addition to the integration technology provided by Enterprise PeopleTools, there is a set of utilities shipped with your PeopleSoft applications that are also a part of the PeopleSoft integration solution.

---

**Note.** The documentation for these utilities is not shipped with the Enterprise PeopleTools documentation; it is shipped with your PeopleSoft application documentation and resides in the PeopleSoft Enterprise Components for <your application> PeopleBook.

---

These additional utilities include:

- Publish utility.

- Error Handling utility.
- Effective Date Publish utility.
- Flat File utility.
- XML Schema utility.

## Publish Utility

The Publish utility automates the process of copying the contents of an entire table into a remote database or legacy system. Use the utility to synchronize data from an existing system when a new PeopleSoft system is installed. The data is chunked based on the maximum size set for a message. You can control the size, number, and frequency of these data messages by using a series of data publishing rules and:

- Whether to create header and trailer records.
- Where the data comes from.
- Whether to chunk the message.
- Which related languages to publish.

The publishing rules include pages for full table publishing rules, batch publishing rules, record mapping, languages, and batch programs.

## Error Handling Utility

The Error Handling utility is a PeopleTools application that you use to view and correct messages that are received by the subscriber. You can also use this utility to correct data that is stored in staging tables.

PeopleSoft applications that receive flat file data from other systems through batch processes have built-in facilities to validate and correct data prior to updating the main application tables. Likewise, before updating core PeopleSoft application tables, the subscription process detects data errors in the messages that it receives. These error messages are stored in either message queues or staging tables.

In some cases, however, errors can't be sent back to the third party for correction (such as when data is in a flat file). In these cases, you must provide error processing on incoming data so that messages that contain information on business objects, such as items and vendors, can be corrected and reprocessed in the PeopleSoft system. The Error Handling utility enables you to achieve this task.

## Effective Date Publish Utility

The Effective Date Publish utility enables you to design processes to update external systems that process only current data and don't use or recognize effective dating.

For example, for full data messages that are intended for vendors who do not handle effective dating, the Effective Date Publish utility enables you to publish only those rows that are currently active. Any future-dated rows are not published and written to the delay table instead.

## Flat File Utility

The Flat File utility enables you to develop complementary processes to translate incoming files into messages or translate outbound messages into files. You use this utility when external systems send you flat files, when external systems only accept flat files sent to them.

The Flat File utility reads the data in an incoming flat file and copies the rowsets of the data file into a message. When the utility sends the message to the subscribers, the subscribing systems receive the message and initiate normal inbound data processing. This process works in reverse for outbound flat files.

## XML Schema Utility

PeopleSoft Open Integration Framework enables near real-time messaging and transactions by using a format that is based on XML to convey information between diverse applications in a standard way. To take advantage of this standardization, you must obtain clear XML definitions (schemas) for each application message, component interface, or business interlink.

The XML Schema utility provides the following features:

- Output options for the XML Schema utility, document type definition (DTD), or BizTalk definition for all application messages.
- The ability to create an XML definition for a single object, for all of the objects, or for all of the objects by a specific owner.
- A single flat file for each XML definition that is written to your system's %TEMP directory (when you use the Microsoft Windows client) or the server's common access file directory (when you use PeopleSoft Internet Architecture).
- An application foundation for future standards of XML definitions.

---

## Workflow Technology

Workflow enables collaboration between applications, organizations, and people. PeopleSoft Workflow enables you to:

- Automate paper-based business processes.
- Increase collaboration between employees, customers, and suppliers.
- Integrate your system according to business processes.

The main elements of PeopleSoft Workflow include:

- Business process definitions, which reflect the business process—from beginning to end.
- Activities, which are a set of logically ordered steps in a process.
- Worklists, which are the automated "to-do" lists.
- Rules, which determine the activities that are required to process your business data.

- Roles, which describe how people fit into the workflow.
- Routings, which specify where information goes and what form it takes (email message or worklist entry).

**See Also**

*PeopleTools 8.52: Workflow Technology*, "Getting Started with PeopleSoft Workflow Technology"

---

## PeopleSoft MultiChannel Framework

PeopleSoft MultiChannel Framework delivers an integrated infrastructure to support multiple interaction channels for call center agents or other PeopleSoft users who must respond to incoming requests and notifications. The PeopleSoft MultiChannel Framework can be used from any PeopleSoft application.

A "channel" refers to the technology used to communicate during an interaction. PeopleSoft MultiChannel Framework supports the following channels:

- Voice (telephone).
- Web collaboration (chat).
- Email.
- Instant messaging.

**See Also**

*PeopleTools 8.52 : MultiChannel Framework*, "Getting Started with PeopleSoft MultiChannel Framework"



## Chapter 6

# Lifecycle Management Tools

This chapter provides overview information and discusses:

- Change Assistant.
- Change Impact Analyzer.
- Setup Manager.
- Application Designer.
- PeopleSoft Test Framework.

---

## Change Assistant

The Change Assistant is an administration tool designed to automate the process of installing software patches, updates, and upgrades, reducing the time required for application updates. With Change Assistant, administrators can manage changes to their PeopleSoft Enterprise applications—from the smallest patch to a major update. PeopleSoft Change Assistant uses Customer Connection to retrieve only those patches that are needed for a specific PeopleSoft environment, thereby improving administrator productivity. Change Assistant uses the Environment Management Framework to store, retrieve and distribute system configurations across PeopleSoft implementations.

PeopleSoft Change Assistant helps to assemble and organize all of the steps necessary to complete your upgrade. It runs some of the steps automatically, while others may require you to make changes manually. The Change Assistant provides the relevant documentation for the steps included in your upgrade process.

### **See Also**

*PeopleTools 8.52: Change Assistant, "Getting Started with PeopleSoft Change Assistant"*

---

## Change Impact Analyzer

Change Impact Analyzer is a tool installed separately from PeopleTools that helps you determine the impact of specific changes you plan to make to your application. It's an interactive program where you can see the relationships of PeopleSoft definitions in a hierarchical view. Change Impact Analyzer displays several views of analyses in tabular and text views. It's delivered with a set of rules that are used to determine the relationships between definitions. Rules define the impact or effect on definition(s) when another definition changes. For example, if a database field changes, it would impact the record containing that field. You can add custom rules to the rules files, if needed, to assess the impact of additional relationships.

### See Also

*PeopleTools 8.52: PeopleSoft Change Impact Analyzer, "Getting Started with Change Impact Analyzer"*

---

## Setup Manager

Setup Manager supports application configurations with a step-by-step process for identifying, managing, and executing setup tasks based either on business processes or the PeopleSoft products and features you select. Based on specific configuration templates the PeopleSoft Setup Manager actually generates a setup task list and pages you can use to manage the completion of setup tasks.

Setup Manager reduces the time and cost required to implement your PeopleSoft applications by ensuring the application setup is completed accurately and in the correct sequence, thus eliminating costly rework.

The Setup Manager also provides links to relevant integration points, which include the documentation for and online pages used for managing the data.

### See Also

*PeopleTools 8.52: PeopleSoft Setup Manager, "Getting Started with Setup Manager"*

---

## Application Designer

Application Designer is the main application development tool of the Enterprise PeopleTools suite. It offers a rich set of lifecycle management features that you will use frequently when upgrading, applying updates provided by Oracle, or applying customizations to your production database. These features enable you to:

- Copy projects between databases.
- Compare definitions in one database to like definitions in another to assess the upgrade or update impact.
- Merge definitions from one database to another.
- Create change packages to apply updates to your system automatically using Change Assistant.

**See Also**

*PeopleTools 8.52: PeopleSoft Application Designer Lifecycle Management Guide, "Getting Started with Application Designer's Lifecycle Management Features"*

*PeopleTools 8.52: Change Assistant, "Working with Change Packages"*

---

## PeopleSoft Test Framework

PeopleSoft Test Framework (PTF) is a tool that automates various tasks within the PeopleSoft Enterprise application – primarily functional testing. Automating functional testing allows you to execute more tests with greater accuracy during a shorter time window.

PTF works by replicating the actions of a single user executing functional tests against a PeopleSoft browser-based application. Users can capture or "record" manual test procedures and save them within the framework. Later, perhaps after an application upgrade or patch, those tests can be executed against the application to verify whether the application still behaves as expected. This method for capturing and executing tests is often called the "record and playback" approach to automation.

Test assets (tests, test cases, logs, and execution options) are stored in a database as Application Designer objects, which means they can be compared and copied between databases.

PTF includes a number of features that many other commercially-available record-and-playback automation tools lack, including:

- The ability to validate recorded objects against PeopleSoft's object metadata definitions. This enables the tester to assertively verify the existence of test objects before running a test rather than running the test to identify invalid object definitions by trial and error.
- Features to help manipulate data within PeopleSoft's rowset-oriented data structure.
- Functionality to automate numerous PeopleSoft-specific functions, such as running processes through Process Scheduler.
- Built-in commands to interface with other PeopleSoft tools, such as Data Mover and PeopleSoft Query.

**See Also**

*PeopleTools 8.52: PeopleSoft Test Framework, "PeopleSoft Test Framework Preface"*



## Chapter 7

# Viewing PeopleTools Within Implementation Phases

This chapter provides overview information related to using PeopleTools within a sample implementation framework.

---

**Note.** The implementation phases in this framework are intended to help you gain a better understanding of Enterprise PeopleTools regarding how and when they may be used. The implementation phases in no way imply strict dependencies between phases. Every implementation is unique.

---

---

## Understanding the Phases of Implementation

Although few implementations follow exactly the phases of a system development lifecycle (SDLC) or implementation plan, the following implementation phases are provided as a framework through which you can gain an understanding of how specific Enterprise PeopleTools are intended to be used. This framework should be viewed as a high-level educational guide rather than a strict, implementation model.

---

**Note.** Some PeopleTools may be used in multiple phases of an implementation.

---

---

## Using PeopleTools within Implementation Phases

The following table describes the implementation phases and lists the tools and technologies that are likely to be used within the particular phases.

<i><b>Phase</b></i>	<i><b>Description</b></i>	<i><b>Tools and Technologies Used</b></i>
Installation	This phase covers the activities involved in installing the PeopleSoft software and setting up your demonstration PeopleSoft environment. A demonstration environment includes application servers, Process Scheduler servers, web servers, and a PeopleSoft database.	<ul style="list-style-type: none"><li>• Data Mover</li><li>• Configuration Manager</li><li>• Application Designer</li><li>• PeopleTools Security</li><li>• Data Integrity Tools (DDDAUDIT and SYSAUDIT)</li></ul>

<b>Phase</b>	<b>Description</b>	<b>Tools and Technologies Used</b>
Application Configuration	This phase covers the activities involved in configuring the PeopleSoft applications you have purchased to fit the business processes of your organization. This phase includes setting up security access, customizing pages, creating custom batch programs, and so on.	<ul style="list-style-type: none"> <li>• PeopleTools Security</li> <li>• PeopleSoft Application Designer</li> <li>• Global Technology</li> <li>• PeopleCode</li> <li>• PeopleSoft Search</li> <li>• PeopleSoft Application Engine</li> <li>• PeopleSoft Setup Manager</li> </ul>
System Configuration	This phase covers the activities involved in setting up and configuring the infrastructure that supports the deployment of your application configuration. For example, in this phase you would set up the servers, the security, and processes required to be in place for your end users to use the PeopleSoft system to complete business transactions with a browser or other device.	<ul style="list-style-type: none"> <li>• Portal Technology (portal)</li> <li>• PeopleTools Security</li> <li>• PeopleSoft Application Server</li> <li>• PeopleSoft Process Scheduler</li> <li>• PeopleSoft Search Framework</li> <li>• PeopleSoft MultiChannel Framework</li> <li>• PeopleSoft Setup Manager</li> <li>• PeopleSoft Application Engine</li> </ul>
Decision Support Configuration	This phase covers the activities involved with setting up the reporting and decision support systems that decision makers will use to gather business information. This includes developing predefined queries and reports, setting up a system to generate reports at scheduled times, set up access to OLAP cubes, and so on.	<ul style="list-style-type: none"> <li>• PeopleSoft Process Scheduler</li> <li>• PeopleSoft Query</li> <li>• PeopleSoft Analytic Calculation Engine</li> <li>• PeopleSoft Tree Manager</li> <li>• Crystal Reports for PeopleSoft</li> <li>• PS/nVision</li> <li>• PeopleSoft Cube Builder</li> <li>• SQR for PeopleSoft</li> <li>• PeopleCode</li> </ul>

<b>Phase</b>	<b>Description</b>	<b>Tools and Technologies Used</b>
Business Process Integration	This phase covers the activities involved in setting up systems that enable your business processes to span multiple business areas, such as HR and Finance, within your organization. This phase includes setting up our XML-driven integration technology that enables disparate systems to exchange data seamlessly, and it also includes setting up PeopleSoft Workflow to enable multiple users within a business process to easily route data and notifications to each other.	<ul style="list-style-type: none"> <li>• PeopleSoft Integration Broker</li> <li>• Workflow Technology</li> <li>• PeopleSoft Component Interfaces</li> <li>• PeopleSoft Application Designer</li> <li>• PeopleCode</li> <li>• PeopleSoft Application Engine</li> </ul>
Maintenance	This phase covers the activities that are involved in maintaining your PeopleSoft system once you have rolled out the system to your end users. This phase includes monitoring system performance, upgrading to new releases, applying patches, and so on.	<ul style="list-style-type: none"> <li>• PeopleSoft Performance Monitor</li> <li>• PeopleSoft Test Framework</li> <li>• Diagnostic Framework</li> <li>• PeopleSoft Data Archive Manager</li> <li>• PeopleSoft Change Assistant</li> <li>• PeopleTools Utilities</li> <li>• PeopleSoft Enterprise Environment Management Plug-in for Oracle Enterprise Manager</li> </ul>





## Chapter 8

# PeopleSoft Internet Architecture

This section provides an overview and discusses these elements of the PeopleSoft Internet Architecture:

- PeopleSoft database.
- PeopleSoft Application Server.
- Web server.
- PeopleTools Development Environment.
- Application access types.

### **See Also**

PeopleSoft Enterprise PeopleTools Certifications on My Oracle Support:<https://support.oracle.com>

---

## Understanding the PeopleSoft Topology

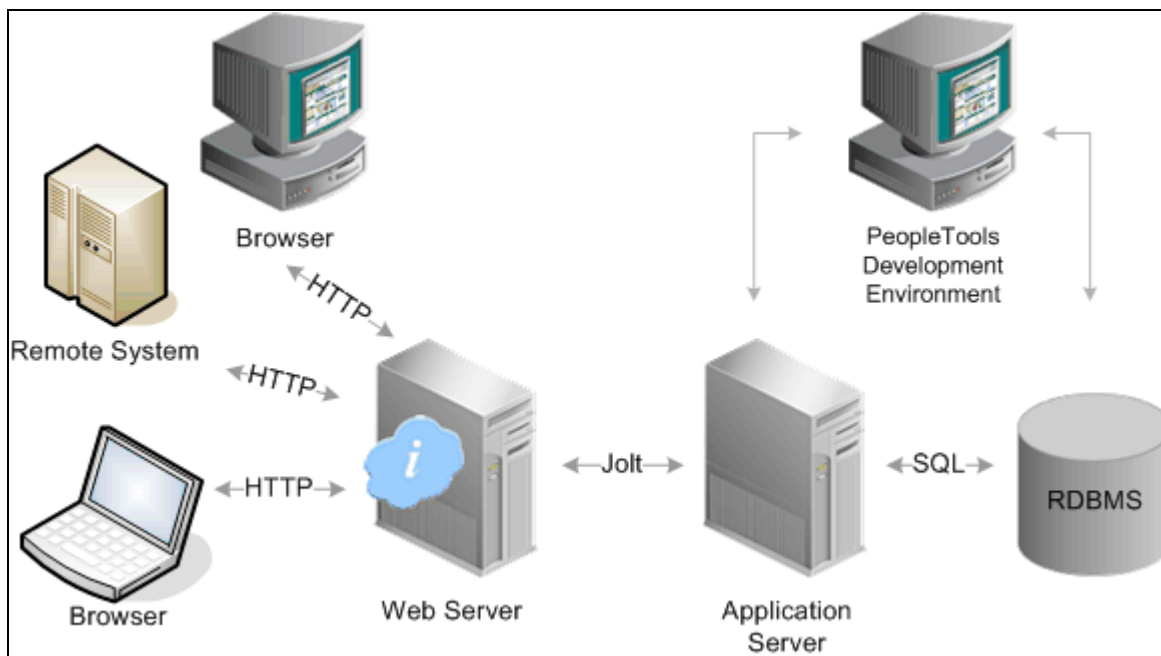
The PeopleSoft Internet Architecture is comprised of these main server types:

- RDBMS.
- PeopleSoft Application Server(s).
- Web server(s).

The servers facilitate connections and process requests from:

- PeopleTools Development Environment: A Windows workstation running a development tool, such as PeopleSoft Application Designer.
- Browser: A supported browser type and version displaying a PeopleSoft application or administrative interface.
- Remote system: A PeopleSoft or third-party system integrated through PeopleSoft Integration Broker's service oriented architecture (SOA).

The following diagram illustrates the relationship between the elements of the PeopleSoft Internet Architecture.



Application requests are received at the web server, then sent to the application server, which submits the SQL to the RDBMS

---

## PeopleSoft Database

PeopleSoft has a long history of offering customers a choice of market-leading databases. PeopleTools provides an abstraction layer, which insulates application developers from the intricacies of each of the specific database platforms. Customer databases choices include:

- Oracle
- IBM DB2
- Microsoft SQL Server
- Informix
- Sybase

After you install your database engine there are three distinct layers within the database that work in concert to store and manage data for your PeopleSoft system. The database system tables manage both the PeopleTools and PeopleSoft application database objects, while the PeopleSoft application tables reside within the infrastructure defined by the PeopleTools metadata.



PeopleSoft database comprised of distinct, yet integrated, layers including system tables, PeopleTools metadata, and PeopleSoft application data

The following table describes each layer of a PeopleSoft database.

<b><i>PeopleSoft Database Layer</i></b>	<b><i>Description</i></b>
System Tables	<p>System tables, also called system catalog tables, are analogous to a table of contents for a book or to file allocation tables on a hard drive. The structure and table names vary depending on which RDBMS you use. System catalog tables:</p> <ul style="list-style-type: none"> <li>• Keep track of all of the objects that reside in the database instance.</li> <li>• Are created by and owned by the RDBMS.</li> <li>• Are often described as system metadata.</li> </ul>
PeopleTools metadata	<p>PeopleTools tables provide the infrastructure for PeopleSoft applications by storing and managing PeopleSoft application metadata. This metadata consists of information that defines the application, such as records, fields, pages, PeopleCode, and security. PeopleTools tables:</p> <ul style="list-style-type: none"> <li>• Define the structure of all object definitions that make up an application.</li> <li>• Use the same table structure for all applications.</li> <li>• Contain data that is added and updated only when the application is installed, or when using development tools such as PeopleSoft Application Designer or Data Mover.</li> </ul>
PeopleSoft application data tables	<p>Application data tables store data entered through a PeopleSoft application. The specific tables and their structures vary by application. Application data tables:</p> <ul style="list-style-type: none"> <li>• Contain transactional data entered by users.</li> <li>• Are empty prior to data entry (except the demo databases).</li> </ul>

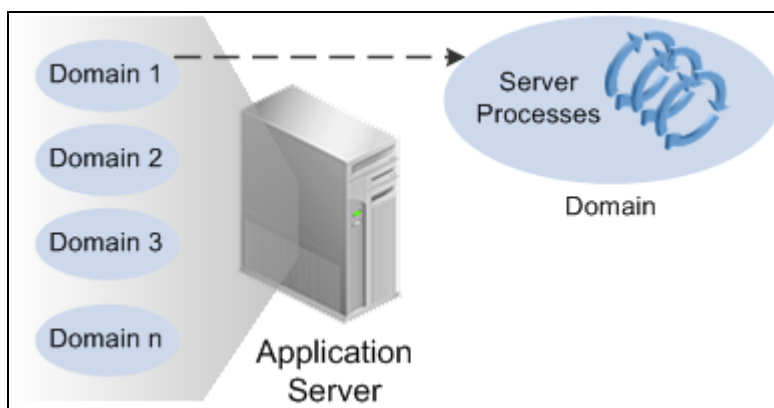
---

## PeopleSoft Application Server

The application server handles the bulk of the workload within the PeopleSoft system. It runs the business logic and processes all application requests. The application server relies on Oracle Tuxedo middleware to process transaction requests. Oracle Jolt provides the Java interface making Oracle Tuxedo available for web-based requests.

Unique server processes run on the application server, with each server process type designed to handle specific types of transactions. For example, some server processes are designed to handle browser requests, while others are designed to handle Integration Broker requests.

Server processes are configured to boot within a domain. The number of and type of server processes that boot within a particular domain varies depending on the purpose of the domain. For example, if the domain is configured to handle application requests, primarily, it can contain only server processes designed to handle such requests. Likewise, if a domain is configured to handle Integration Broker processing, it can contain a predominant amount of the integration server processes. A domain can connect to one, and only one, database, while a database can accept connections from multiple domains.



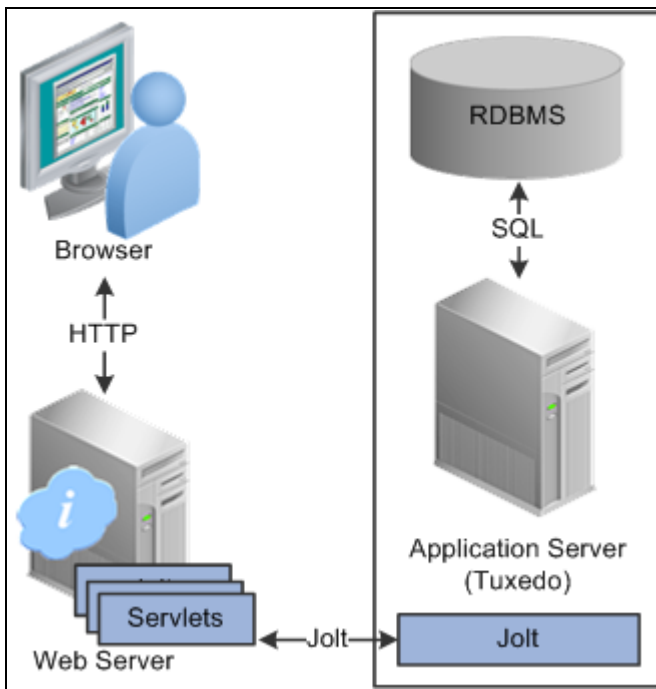
An application server can contain multiple domains with each domain containing multiple server processes

To enhance the scalability of your system, you can configure multiple domains on a single application server machine, and you can also incorporate multiple application server machines to meet the demands of your system.

---

## Web Server

The web server receives application requests from the web environment (internet and intranet) and forwards the requests to the Oracle Jolt port on the application server. A collection of PeopleSoft servlets running on the web server handle incoming requests. Like the server processes on the application server, each PeopleSoft servlet is designed to perform unique functions. For example, the portal servlet handles browser requests while the gateway servlet handles service oriented architecture (SOA) messages and requests.



PeopleSoft servlets on the web server receive web-based requests and forward those to Jolt on the application server

Supported web servers include:

- Oracle WebLogic
- IBM WebSphere

## PeopleTools Development Environment

While many development and administrative tools and interfaces are accessible by browser, some tools are only available from a Windows-based workstation. The PeopleTools Development Environment refers to the Microsoft Windows workstations that run the collection of Windows-based PeopleTools, which enables application developers, technical specialists, and system administrators to perform a variety of tasks.

For example, application developers use PeopleSoft Application Designer in the development environment to create and modify application definitions such as fields, records, pages, and components. System administrators use PeopleSoft Data Mover in the development environment to import data into the database, for example.

The PeopleTools Development Environment can access the system using these connection types:

<b>Connection Type</b>	<b>Description</b>
Two-tier	Involves connecting directly to the database. A two-tier connection requires connectivity software to be installed and configured on the workstation. A two-tier connection is required for many upgrade and installation tasks.

<b>Connection Type</b>	<b>Description</b>
Three-tier	Involves connecting to the database through the application server. A three-tier connection requires no connectivity software to be installed on the workstation. In a three-tier connection, the application server maintains the connection to the database for transmitting SQL statements between the application server and the database. Only lightweight Tuxedo messages are sent between the workstation and the application server.

---

## Application Access Types

The PeopleSoft Internet Architecture enables these application access types:

<b>Connection Type</b>	<b>Description</b>
Browser	<p>All PeopleSoft applications as well as many PeopleTools interfaces are rendered within a browser. No connectivity software is required on the workstation running the browser, nor are there any applets downloaded to the browser. All processing occurs within servlets on the web server and server processes on the application server. The system sends to the browser only HTML, JavaScript, and XML.</p> <p>Supported browser types include Microsoft Internet Explorer, Mozilla, FireFox, and Safari.</p>
Remote system	A remote system may be a separate PeopleSoft application, a third-party system, or a legacy system. The service oriented architecture (SOA) provided by PeopleSoft Integration Broker enables you to configure your PeopleSoft system to produce services for and consume services from other systems.

# Index

## A

- administration tools
  - Configuration Manager 13
  - Data Archive Manager 12
  - Data Integrity 12
  - Data Mover 11
  - Diagnostic Framework 11
  - PeopleTools Utilities 13
  - Performance Monitor 10
  - security 9
  - understanding 9
- analytic tools
  - BI Publisher for PeopleSoft 19
  - Crystal Reports 20
  - Cube Builder 18
  - PeopleSoft Analytic Calculation Engine 18
  - Process Scheduler 21
  - PS/nVision 19
  - Query 18
  - SQR 20
  - Tree Manager 21
  - understanding 17
  - web services 22
- application configuration 37
- Application Designer 3
  - lifecycle management features 34
- Application Engine 5

## B

- BI Publisher for PeopleSoft 19
- business process integration 39

## C

- Change Assistant 33
- Change Impact Analyzer 34
- Component Interfaces 25
- Configuration Manager 13
- Crystal Reports 20
- Cube Builder 18

## D

- Data Archive Manager 12
- Data Integrity 12
- Data Mover 11
- decision support configuration 38
- development tools
  - documents 6
  - feeds 24
  - Global Technology 5
  - Internet technology 6
  - PeopleCode 4

- PeopleSoft Application Designer 3
- PeopleSoft Application Engine 5
- portal 6
- understanding 3
- Diagnostic Framework 11
- documents 6

## E

- EDI Manager 26
- Effective Date Publish Utility 30
- Error Handling Utility 30

## F

- feed publishing framework 24
- file interface 26
- Flat File Utility 31
- Forms API 26

## G

- globalization 5
- Global Technology 5

## H

- Handler Tester 29

## I

- implementation phases 1
  - application configuration 37
  - business process integration 39
  - decision support configuration 38
  - installation 37
  - maintenance 39
  - system configuration 38
  - understanding 37
- installation 2, 37
- Integration Broker 24
- integration point testing, automated 28
- integration testing
  - Handler Tester 29
  - integration points 28
  - Schema Tester 29
  - Send Master 27
  - Simple Post 28
  - transformation testing 28
- integration tools
  - Component Interfaces 25
  - EDI 26

- Effective Date Publish Utility 30
- Error Handling Utility 30
- file interfaces 26
- Flat File Utility 31
- forms API 26
- Integration Broker 24
- MultiChannel Framework 32
- Open Query 26
- Publish Utility 30
- supported tools 26
- understanding 23
- Workflow Technology 31
- XML Schema Utility 31
- Internet technology 6
  - feeds 24

## L

- lifecycle management tools
  - Application Designer 34
  - Change Assistant 33
  - Change Impact Analyzert 34
  - PeopleSoft Setup Manager 34
  - PeopleSoft Test Framework 35

## M

- maintenance 39
- MultiChannel Framework 32

## O

- Open Query 26
- Oracle Configuration Manager 14
- Oracle Enterprise Manager 14
- Oracle Secure Enterprise Search 6

## P

- PeopleCode 4
- PeopleSoft Analytic Calculation Engine 18
- PeopleSoft Pure Internet Architecture 6
- PeopleSoft Search 6
- PeopleSoft Search Framework 6
- PeopleSoft Setup Manager 34
- PeopleSoft Test Framework
  - lifecycle management features 35
- PeopleTools
  - category 1
  - installation 2
  - overview 1
- Performance Monitor 10
- phases of implementation
  - See* implementation phases
- Process Scheduler 21
  - web service 22
- PS/nVision 19
- Publish Utility 30

## Q

- Query 18
- Query Access
  - web service 22

## R

- reporting tools *See* decision support tools

## S

- Schema Tester 29
- Security 9
- Send Master 27
- SES 6
- Simple Post 28
- SQR 20
- system configuration 38

## T

- Transformation Test utility 28
- Tree Manager 21

## U

- utilities 13

## W

- web services
  - Process Scheduler 22
  - Query Access 22
- Workflow Technology 31

## X

- XML Schema Utility 31