

Oracle Utilities Customer Self Service

Installation Guide

Release 2.0.0

E24861-01

September 2011

Copyright © 2000, 2011, Oracle and/or its affiliates. All rights reserved.

This software and related documentation are provided under a license agreement containing restrictions on use and disclosure and are protected by intellectual property laws. Except as expressly permitted in your license agreement or allowed by law, you may not use, copy, reproduce, translate, broadcast, modify, license, transmit, distribute, exhibit, perform, publish, or display any part, in any form, or by any means. Reverse engineering, disassembly, or decompilation of this software, unless required by law for interoperability, is prohibited.

The information contained herein is subject to change without notice and is not warranted to be error-free. If you find any errors, please report them to us in writing. If this software or related documentation is delivered to the U.S. Government or anyone licensing it on behalf of the U.S. Government, the following notice is applicable:

U.S. GOVERNMENT RIGHTS

Programs, software, databases, and related documentation and technical data delivered to U.S. Government customers are "commercial computer software" or "commercial technical data" pursuant to the applicable Federal Acquisition Regulation and agency-specific supplemental regulations. As such, the use, duplication, disclosure, modification, and adaptation shall be subject to the restrictions and license terms set forth in the applicable Government contract, and, to the extent applicable by the terms of the Government contract, the additional rights set forth in FAR 52.227-19, Commercial Computer Software License (December 2007). Oracle America, Inc., 500 Oracle Parkway, Redwood City, CA 94065.

This software or hardware is developed for general use in a variety of information management applications. It is not developed or intended for use in any inherently dangerous applications, including applications which may create a risk of personal injury. If you use this software or hardware in dangerous applications, then you shall be responsible to take all appropriate fail-safe, backup, redundancy and other measures to ensure its safe use. Oracle Corporation and its affiliates disclaim any liability for any damages caused by use of this software or hardware in dangerous applications.

Oracle and Java are registered trademarks of Oracle and/or its affiliates. Other names may be trademarks of their respective owners.

This software or hardware and documentation may provide access to or information on content, products and services from third parties. Oracle Corporation and its affiliates are not responsible for and expressly disclaim all warranties of any kind with respect to third party content, products and services. Oracle Corporation and its affiliates will not be responsible for any loss, costs, or damages incurred due to your access to or use of third party content, products or services.

Table of Contents

Chapter 1	5
Overview	5
Additional Resources	5
Abbreviations	5
Chapter 2	7
Installation	7
Software Requirements	7
Pre-Installation Tasks	7
Configuring Edge Applications	8
Installing OUCSS	8
Post-Installation Checklist	15
Verify the OUCSS Schema tables	15
Verify the OUCSS Data Source	16
Verify the OUCSS Security Credential	17
Verify OUCSS Shared Libraries and Offers Deployment	18
Verify Tokenization of the CCB Edge Application <i>wsdl</i>	18
Verify OUCSS Group Spaces Deployment	19
Post-Installation Steps	20
Register New WSS User and Test Functionality	20
Verify the Security Configuration	23
Verify OUCSS Admin Default User "WSSAdmin" Functionality :	23
Verify OUCSS User "WSSCSR" Functionality	24
Installing CCB-MDM Integrated Flows	24
Software Requirements	24
Pre-Installation Tasks	24
Converting an Existing PRODUCT HOME to an OUI-Based PRODUCT HOME	25
Installing the Integration	26
Post-Installation Checklist for CCB-MDM Flows	27
Verifying Composites in Enterprise Manager	27
Verify Security Credentials from EM	28
Uninstalling CCB-MDM Integrated Flows	28
Chapter 3	31
Uninstalling OUCSS	31
Appendix A	35
The InstallProperties.xml File	35
InstallProperties XPath Descriptions and Examples	38
Appendix B	41
Installing OUCSS Components as Portlets	41
Pre-Installation Tasks	41
Deploying OUCSS Components as Portlets into an Existing Portal Application	42
Post-Installation Steps	45
Verify OUCSS Schema and Data Source Configuration	45
Verify the OUCSS Data Source	46

Verify the Creation of OUCSS_XAI_BASIC_KEY	47
Verify OUCSS Application Deployment	48
Verify Tokenization of the CCB Edge Application <i>wsdl</i>	49
Post-Installation Task: Update SS_Configuration	50
Uninstalling OUCSS Components as Portlets	51

Chapter 1

Overview

This guide describes the installation steps that must be completed in order to use Oracle Utilities Customer Self Service integrated with Oracle Utilities Customer Care and Billing and Oracle Utilities Meter Data Management.

Additional Resources

For more information on products related to OUCSS installation, see the following documents:

Resource	Location
Oracle WebCenter documentation	http://www.oracle.com/technetwork/middleware/webcenter/portal/documentation/index.html
Oracle Utilities Customer Care and Billing Integration to Oracle Utilities Meter Data Management Release 3.1.1 Media Pack Install Guide and Implementation Guide	Refer to Oracle Utilities Customer Care and Billing Integration to Oracle Utilities Meter Data Management Release 3.1.1 Media Pack documentation located on Oracle E-Delivery.
Oracle Utilities Meter Data Management Installation Guide for Release v2.0.1	Refer to Oracle Utilities Meter Data Management installation documentation located on Oracle E-Delivery.
Oracle Utilities Customer Care and Billing Installation Guide for Release v2.3.1	Refer to Oracle Utilities Customer Care and Billing installation documentation located on Oracle E-Delivery.
Oracle SOA Suite documentation	http://www.oracle.com/technetwork/middleware/soasuite/documentation/index.html

Abbreviations

OUCSS	Oracle Utilities Customer Self Service
CCB	Oracle Utilities Customer Care and Billing
MDM	Oracle Utilities Meter Data Management
DDL	Data Definition Language
MDS	Metadata Services

OUI	Oracle Universal Installer
RCU	Repository Creation Utility
EAR	Enterprise Archive
WC	WebCenter
WLS	WebLogic Server

Chapter 2

Installation

Software Requirements

The following software must be installed and configured prior to installation of Oracle Utilities Customer Self Service:

- Oracle WebCenter release 11.1.1.4.0 on WebLogic server 10.3.4.
- Oracle Utilities Customer Care and Billing release 2.3.1 installed on an Oracle database with Service Pack 2 (patch 12729127).

If integrating Oracle Utilities Meter Data Management:

- Oracle Utilities Meter Data Management release 2.0.1 installed on an Oracle database with Service Pack 2 (patch 12769782).
- Oracle Utilities Customer Care and Billing Integration to Oracle Utilities Meter Data Management Release 3.1.1 Media Pack.
- See other requirements in the CCB-MDM Integrated Flows section of this guide.

Pre-Installation Tasks

1. Ensure that Oracle WebCenter 11.1.1.4.0 is up and running (AdminServer, WC_Spaces, WC_Portlet servers are running).
2. Verify that edge applications are properly installed and configured.

Note: The installation script performs the detokenization of the Oracle Utilities Customer Care and Billing application URL according to your environment.

3. Deploy the Offer Service EAR (optional).

Note: If another Offer Service is used instead of the provided web service, the connection information in *InstallProperties.xml* file must be adjusted accordingly.

4. For the OUCSS application, only the WC_Portlet and WC_Spaces managed servers are required in WebCenter. Other managed servers (WC_Collaboration and WC_Utilities) are not required for installation. These can be either shut down or bypassed in WebCenter installation.

- Node Manager must be running to start and stop administration servers, managed servers, and WebCenter applications through the Fusion Middleware Control or the Oracle WebLogic Server Administration Console.

To start Node Manager (first time only), run the `setNMProps` script to set `StartScriptEnabled=true` in the `nodemanager.properties` file:

On Linux:

```
Oracle_Common_Home/common/bin/setNMProps.sh
```

On Windows:

```
Oracle_Common_Home\common\bin\setNMProps.cmd
```

To start the Node Manager (subsequent starts), navigate to `WL_HOME/server/bin`, then enter:

On Linux:

```
./startNodeManager.sh
```

On Windows:

```
./startNodeManager.cmd
```

When Node Manager starts, it reads the `nodemanager.properties` file with the `StartScriptEnabled=true` property, and uses the start scripts when it subsequently starts the managed servers. Note that you need to run the `setNMProps` script only once.

- Before starting OUCSS deployment, verify that `WC_Portlet`, `WC_Spaces`, and the WebCenter admin are running from `http://webcenterhostname:weblogicadminport/console`.

The screenshot shows the Oracle WebLogic Server Administration Console. On the left, there is a navigation tree with categories like Virtual Hosts, Migratable Targets, Coherence Servers, Coherence Clusters, Machines, Work Managers, Startup and Shutdown Classes, Deployments, Services, and Security Realms. Below this is a 'How do I...' section with links like 'Create Managed Servers', 'Clone Servers', 'Delete Managed Servers', 'Delete the Administration Server', and 'Start and stop servers'. At the bottom left is a 'System Status' section showing 'Health of Running Servers' with a bar chart indicating 0 Failed, 0 Critical, 0 Overloaded, 0 Warning, and 3 OK servers.

The main area displays a table titled 'Servers (Filtered - More Columns Exist)'. The table has columns for Name, Cluster, Machine, State, Health, and Listen Port. There are five rows of servers, all on 'new_Machine_1'. The first three rows (AdminServer(admin), WC_Collaboration, and WC_Portlet) are highlighted with red boxes. The last two rows (WC_Spaces and WC_Uilities) are also highlighted with red boxes. The AdminServer(admin), WC_Portlet, and WC_Spaces are in a 'RUNNING' state with 'OK' health. WC_Collaboration and WC_Uilities are in a 'SHUTDOWN' state.

Name	Cluster	Machine	State	Health	Listen Port
AdminServer(admin)		new_Machine_1	RUNNING	OK	7001
WC_Collaboration		new_Machine_1	SHUTDOWN		8000
WC_Portlet		new_Machine_1	RUNNING	OK	8009
WC_Spaces		new_Machine_1	RUNNING	OK	8006
WC_Uilities		new_Machine_1	SHUTDOWN		8091

Configuring Edge Applications

To configure edge applications, see the configuration information in the *Oracle Utilities Customer Care and Billing Implementation Guide*, including the sections related to Oracle Utilities Meter Data Management (if integrating that product).

Installing OUCSS

This procedure describes the default installation method for OUCSS that extends WebCenter Spaces with OUCSS taskflows.

Note: An alternative portlets-based method for installing and uninstalling OUCSS is available for users implementing a non-WebCenter-based portal solution or for users who may want to integrate OUCSS portlets into an existing WebCenter or non-WebCenter-based portal application. For details on the alternative method, see *Appendix B*.

To perform the default OUCSS installation:

1. Download <OUCSS-ProductInstall>.zip from Oracle E-Delivery (edelivery.oracle.com) and unzip into a target installation directory (e.g., /spl/OUCSS-ProductInstall on Linux or D:\OUCSS-ProductInstall on Windows).
2. Locate *webcenter_WSS.zip* in the installation folder and unzip the contents to a *webcenter_WSS* subfolder under the installation folder.

Note: The *webcenter_WSS* folder contains your OUCSS program, configuration, and installation folders and files (/bin, /config, /Install).



3. Set the `PRODUCT_HOME` environment variable to point to *webcenter_WSS*:

Windows example:

```
SET PRODUCT_HOME=D:\OUCSS\webcenter_WSS
echo %PRODUCT_HOME%
```

Echo should return `PRODUCT_HOME` as `D:\OUCSS\webcenter_WSS`.

Linux example:

```
export PRODUCT_HOME=/spl/OUCSS/webcenter_WSS
echo $PRODUCT_HOME
```

Echo should return `PRODUCT_HOME` as `/spl/OUCSS/webcenter_WSS`.

4. Set the WebLogic server environment by running the *setWLSEnv.cmd* script (on Windows) or *setWLSEnv.sh* script (on Linux). The scripts are located in <WebCenter_Home>\wlserver_10.3\server\bin (where WebCenter_Home is the directory in which WebCenter is installed). After running the script setWLSEnv on windows/linux, verify that **wlserver** environment is set in your **classpath** and **path** environment variables

Windows example:

```
run D:\webcenter\wlserver_10.3\server\bin\setWLSEnv.cmd
```

Linux example:

```
source /spl/wctest/webcenter/wlserver_10.3/server/bin/setWLSEnv.sh
```

5. Update the <PRODUCT_HOME>/config/InstallProperties.xml file with values appropriate to your environment (see Appendix A for a sample *InstallProperties.xml* file and an explanation of the properties and elements available in the file).
6. Execute following command to change to PRODUCT_HOME/bin

On Linux:

```
cd $PRODUCT_HOME/bin
```

On Windows:

```
cd %PRODUCT_HOME%\bin
```

Note: Before proceeding with Steps 7-11 ensure that Admin, WC_Spaces, and WC_Portlet servers are up and running.

7. Run the deployment/installation command to import default OUCSS users and groups into the WebLogic LDAP.

Note: This command is valid only if you are using a WebLogic embedded LDAP; it is not valid on other LDAPs.

On Windows:

```
ant -f InstallBuild.xml importLDIFWeblogicEmbeddedLDAP -
DInstallProperties=%PRODUCT_HOME%\config\InstallProperties.xml -l importLDAP.log
```

On Linux:

```
ant -f InstallBuild.xml importLDIFWeblogicEmbeddedLDAP -
DInstallProperties=$PRODUCT_HOME/config/InstallProperties.xml -l importLDAP.log
```

After running the command check *importLDAP.log* for any build errors. If “BUILD SUCCESSFUL” does not appear at the end of the file, fix any errors listed in the log before proceeding.

8. Verify user and group creation by logging in to the Oracle WebLogic Server console at `http://<webcenterhostname>:<WLSAdminServerPort>/console` as `wlsadminuser/wlsadminpasswd`.
 - A. Select **webcenter_domain > Security Realms > myrealm > Users and Groups**.
 - B. Verify that the users WSSAdmin and WSSCSR were created.
 - C. Verify that the groups WSSAdminGroup, WSSCSRGroup, WSSEnrolledGroup, and WSSGroup were created.
9. Run the installation command to deploy the following OUCSS artifacts:
 - *extend.spaces.webapp.war* and *OUCSS_Extension.war* as shared libraries in WebLogic. These libraries are required.
 - *oracle.ugbu.ss.billing.offers.ws.model_2.0.0.ear* is deployed only if your environment uses the offer service (if the OUCSSOfferServiceFlag in *InstallProperties.xml* is set to true).
 - New DB Schema and required tables for OUCSS are created in the database.
 - WebCenter customizations for OUCSS (Forgot Password link, GroupSpaces) are imported into MDS.
 - Security Credentials.
 - Create Mail Session.

On Windows:

```
ant -f InstallBuild.xml -DInstallProperties=%PRODUCT_HOME%\config\InstallProperties.xml
-l installOUCSS.log
```

On Linux:

```
ant -f InstallBuild.xml -DInstallProperties=$PRODUCT_HOME/config/InstallProperties.xml -
l installOUCSS.log
```

After running the command check *installOUCSS.log* for any build errors. If “BUILD SUCCESSFUL” does not appear at the end of the file, fix any errors listed in the log before proceeding.

10. Run the installation command to create connections to CCB:

On Windows:

```
ant -f InstallBuild.xml createConnection -
DInstallProperties=%PRODUCT_HOME%\config\InstallProperties.xml -l createConnection.log
```

On Linux:

```
ant -f InstallBuild.xml createConnection -
DInstallProperties=$PRODUCT_HOME/config/InstallProperties.xml -l createConnection.log
```

After running the command check *createConnection.log* for any build errors. If “BUILD SUCCESSFUL” does not appear at the end of the file, fix any errors listed in the log before proceeding.

11. After creating the connections to CCB, run the following command to restart WebCenter managed servers:

On Windows:

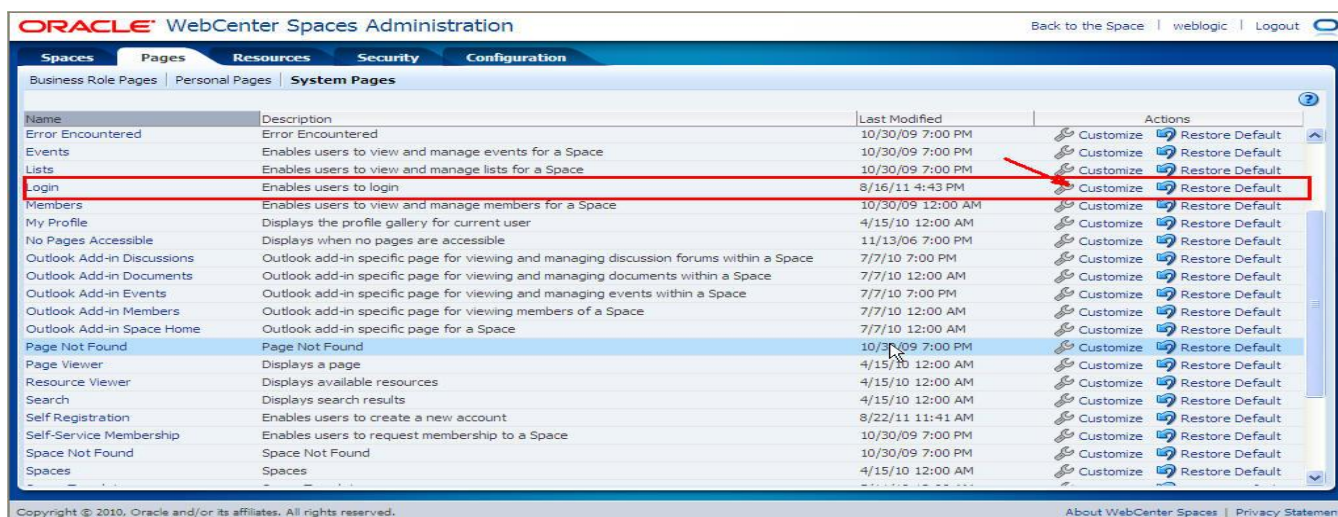
```
ant -f InstallBuild.xml restartWebcenterPortletServer -
DInstallProperties=%PRODUCT_HOME%\config\InstallProperties.xml -l
restartWebcenterPortletServer.log
```

On Linux:

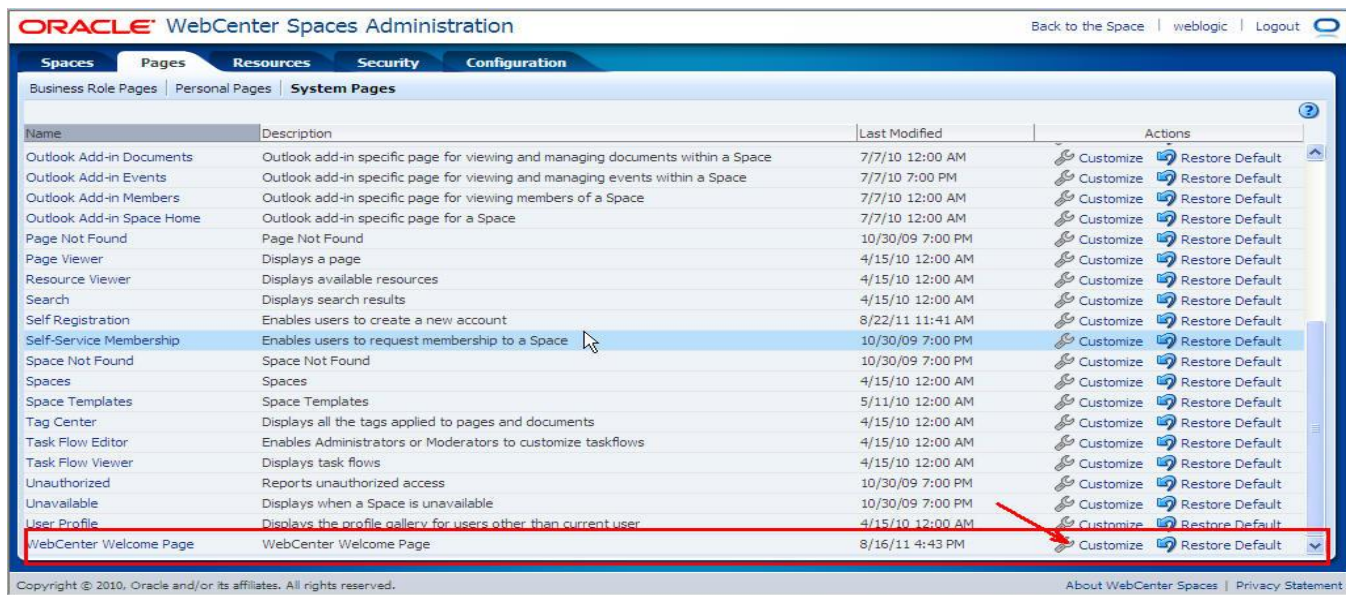
```
ant -f InstallBuild.xml restartWebcenterPortletServer -
DInstallProperties=$PRODUCT_HOME/config/InstallProperties.xml -l
restartWebcenterPortletServer.log
```

12. Enable customization for Login and WebCenter Welcome Pages of Webcenter Spaces:

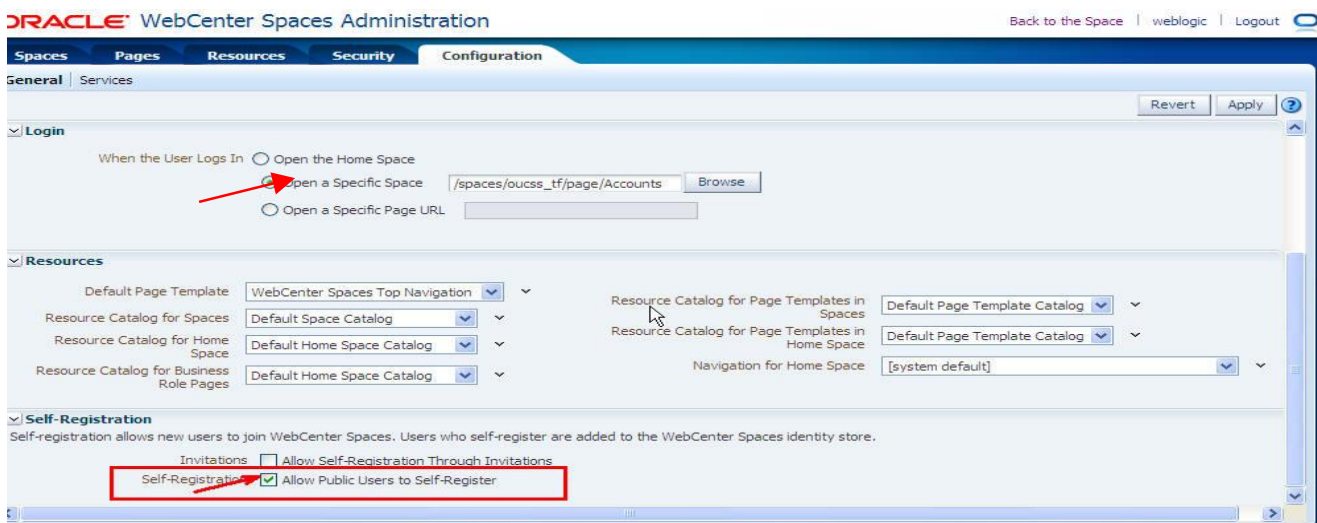
- A. Log in to the WebCenter Spaces application
http://<webcenter_hostname>:WebCenterSpacesPort/webcenter as wadminuser/wcadminpasswd.
- B. Select **Administration > Configuration > Pages**.
- C. Under **Pages > System Pages**, select **Login**, then click **Customize**.
- D. Click **Save** and **Close**.



- E. Again select **Administration > Configuration > Pages**.
- F. Under **Pages > System Pages**, select **WebCenter Welcome Page**, then click **Customize**.



- G. Click **Save**, then **Close**.
- H. Click **Logout** to complete the customization.
13. Enable Self-Registration to allow new users to register from WebCenter Spaces and set the landing page:
 - A. Log in to the WebCenter Spaces application
`http://<webcenter_hostname>:WebCenterSpacesPort/webcenter` as `wcadminuser/wcadminpasswd`
 - B. Choose the **Administration** tab and select **Configuration > General**.
 - C. In the **Self-Registration** section (as shown in the following image) check **Allow Public Users to Self Register**, then click **Apply**.
 - D. In the **Login** section of the same **Configuration** page, choose the **When the User Logs In > Open a Specific Space** option. Enter `/spaces/oucss_tf/page/Accounts`, then click **Apply**, as shown in the following image:



- E. Click **Logout**.
- F. On the WebCenter Spaces Login screen, the **Register** and **Forgot Password** links will now be available, as shown in following image:



14. Update **SS_CONFIGURATION** table values in the oucss schema by logging in as oucssdbuser/oucssdbpasswd and modifying the following properties to match your environment:

Property	Description	Default Value
installation.owner.flag	This is the current installation owner flag. When the product will be shipped this property should be CM	CM
oucss.default.locale	Default Locale of OUCSS Application	en
edgeapplication.ccb.datasource	This is the edge application code. E.g. C1, M1 etc. from where the data is pulled.	C1
lookups.webservice.status	Status of the Lookup Value inserted using this service. Only allowed values are ACTIVE, INACTIVE.	ACTIVE
validate.regex.email	Regular expression to validate email address in OUCSS UI.	[a-zA-Z0-9._%+-]+@[a-zA-Z0-9.-]+\.[a-zA-Z]{2,4}
validate.regex.username	Regular expression to validate a valid user name that can be used when registering.	[a-zA-Z0-9_]*
validate.regex.password	Regular expression to validate the password pattern that can be used when registering or changing user password.	[a-zA-Z0-9_]*
validate.length.password.min	Integer value for minimum length of the password that should accepted when registering or changing password.	8
validate.length.password.max	Integer value to allow maximum length of the password when registering or changing password.	12
mail.session.jndi.name	JNDI of Mail Session to send emails.	mail/OU CSS
webcenter.register.url	This will be used in the registration email which is sent to the user with the registration key and a URL. User shall click on this link in the email to complete the OUCSS registration.	http://webcenterserverhostname:webcenterspacesport/webcenter/spaces/oucss/page/Accounts?regKey=
webcenter.login.url	This property will be used in email messages to send the user the login URL.	http://webcenterserverhostname:webcenterspacesport/webcenter/spaces/oucss/page/Accounts

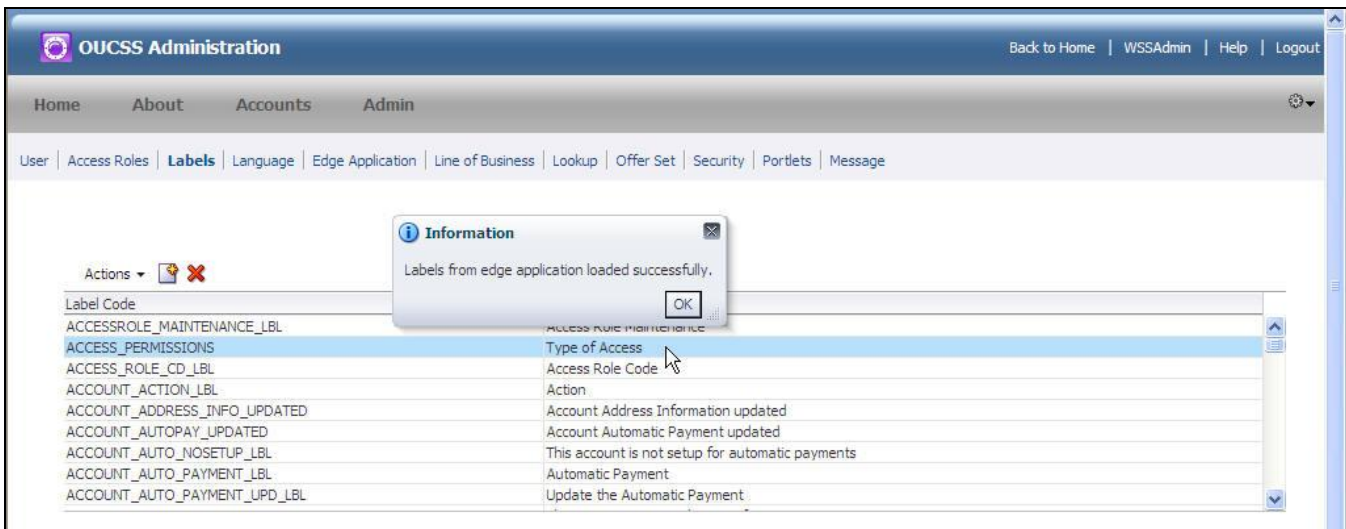
15. Perform reloading of Labels and Lookups from CCB.

Important: See the pertinent sections of the *OUCSS Implementation Guide* for information on configuring labels and lookups in CCB (as well as MDM, if applicable) and ensure configurations are in place prior to executing this step.

- A. Log in into the WebCenter Spaces application at `http://<WebCenterSpacesHost>:<WebCenterSpacesPort>/webcenter` with WSSAdmin/welcome1.

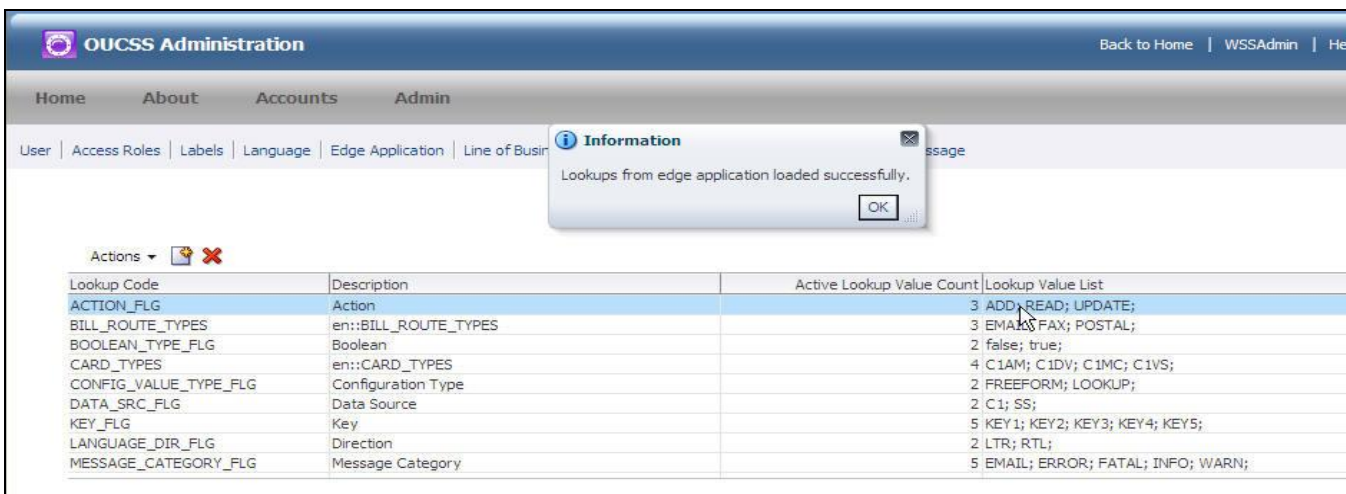
Note: For LDAP security reasons, change the default password for WSSAdmin user from “welcome1” to a new password.

- B. Select **Admin** and then click **Labels**.
- C. Click **Actions > Reload Labels** as shown in the following image:

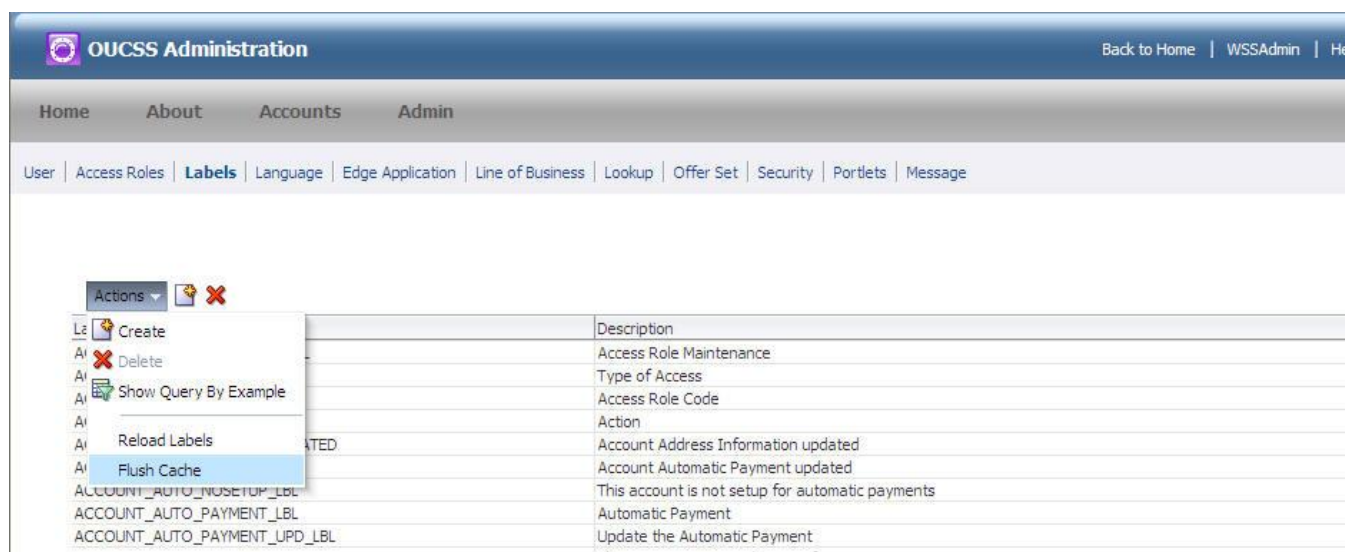


The message, “Labels from edge application loaded successfully” should appear.

- D. Click **Lookup**.
- E. Click **Actions > Reload Lookups**.
- F. The message “Lookups from edge application loaded successfully” should appear:



- G. Select **Labels** again and click **Actions > Flush Cache**.



16. Run the following command from `product_home\bin` to restart WebCenter managed servers after reloading labels and lookups from CCB:

On Windows:

```
ant -f InstallBuild.xml restartWebcenterPortletServer -
DInstallProperties=%PRODUCT_HOME%\config\InstallProperties.xml -l restartWebcenter1.log
```

On Linux:

```
ant -f InstallBuild.xml restartWebcenterPortletServer -
DInstallProperties=$PRODUCT_HOME/config/InstallProperties.xml -l restartWebcenter1.log
```

Post-Installation Checklist

Use this following checklist to verify that OUCSS correctly installed.

Verify the OUCSS Schema tables

1. Log in into the database with the OUCSS dbuser/passwd credentials that you created during the installation process.
2. Verify that the following tables exist by executing the query `select *`:
 - SS_ACCESS_ROLE
 - SS_ACCESS_ROLE_L
 - SS_CONFIGURATION
 - SS_EDGE_APPLICATION
 - SS_EDGE_APPLICATION_L
 - SS_KEYS
 - SS_LABEL
 - SS_LABEL_L
 - SS_LANGUAGE
 - SS_LINE_OF_BUSINESS
 - SS_LINE_OF_BUSINESS_L
 - SS_LOB_ACCESS_ROLE
 - SS_LOB_ACCESS_ROLE_PORTLET

- SS_LOB_ACCROLE_PRTLT_ACTION
- SS_LOOKUP
- SS_LOOKUP_L
- SS_LOOKUP_VAL
- SS_LOOKUP_VAL_L
- SS_MESSAGE
- SS_MESSAGE_L
- SS_OFFER
- SS_OFFER_LANGUAGE
- SS_OFFER_SET
- SS_OFFER_SET_L
- SS_PORTLET
- SS_PORTLET_ACTION
- SS_PORTLET_L
- SS_USER
- SS_USER_LOB_ACCESS_ROLE

Verify the OUCSS Data Source

1. Log in to the Oracle WebLogic Server console at `http://webcenterhostname:WLSAdminServerPort/console` with `wlsadminuser/wlsadminpasswd`.
2. Select the `<webcenter_domainname>`, then expand Services and click Data Sources.

The list of data sources should include the OUCSS data source **OUCSSDS**, as shown in the following image:

Configuration editing is enabled. Future changes will automatically be activated as you modify, add or delete items in this domain.

Domain Structure

- webcenter_domain
 - Environment
 - Deployments
 - Services
 - Messaging
 - Data Sources**
 - Persistent Stores
 - Foreign JNDI Providers
 - Work Contexts
 - XML Registries
 - XML Entity Caches
 - JCOM
 - Mail Sessions
 - File T3

How do I...

- Create JDBC generic data sources
- Create JDBC GridLink data sources
- Create JDBC multi data sources
- Delete JDBC data sources
- Delete JDBC multi data sources

System Status

Health of Running Servers

Failed (0)

Summary of JDBC Data Sources

Configuration | Monitoring

A JDBC data source is an object bound to the JNDI tree that provides database connectivity through a pool of JDBC connections. Applications can look up a data source on the JNDI tree and then borrow a database connection from a data source.

This page summarizes the JDBC data source objects that have been created in this domain.

[Customize this table](#)

Data Sources (Filtered - More Columns Exist)

New | Delete

Showing 1 to 10 of 10 Previous | Next

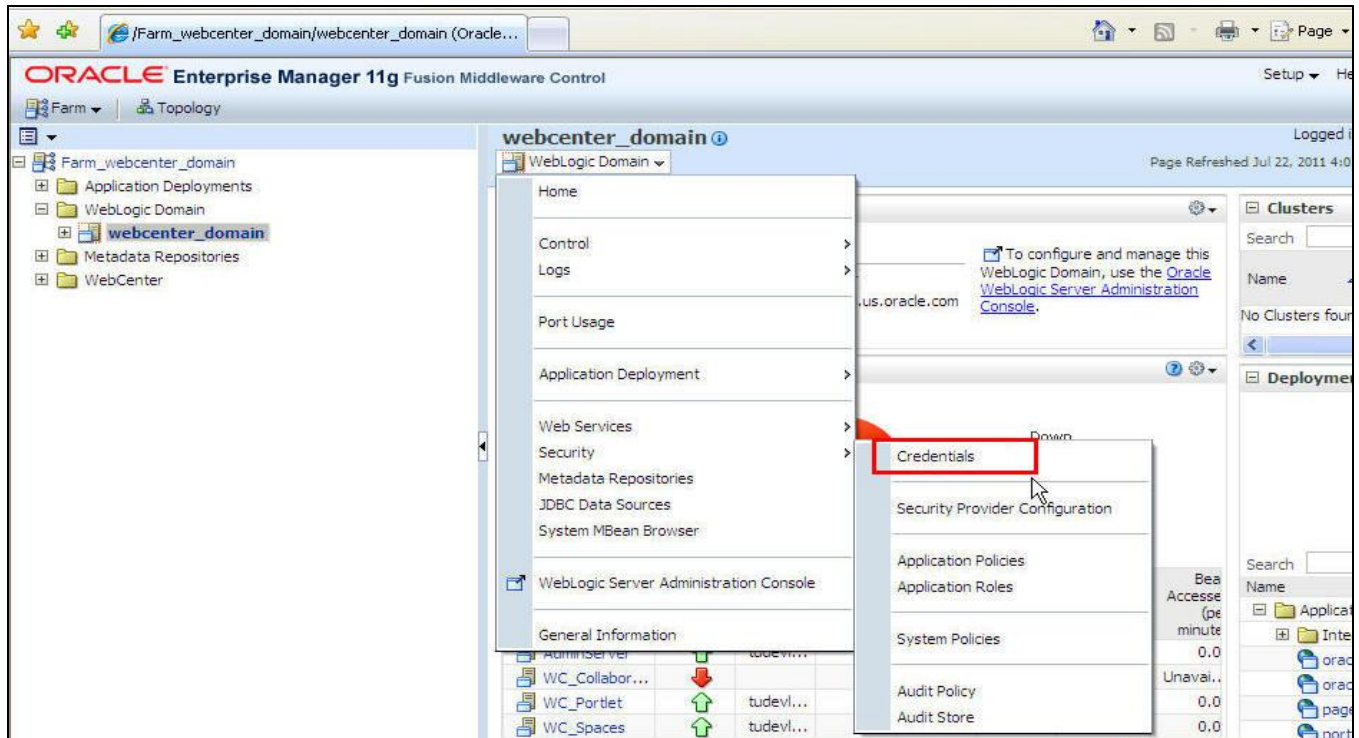
<input type="checkbox"/>	Name	Type	JNDI Name	Targets
<input type="checkbox"/>	ActivitesDS	Generic	jdbc/ActivitesDS	WC_Uilities, WC_Spaces
<input type="checkbox"/>	mds-owsm	Generic	jdbc/mds/owsm	AdminServer, WC_Collaboration, WC_Portlet, WC_Spaces
<input type="checkbox"/>	mds-PageletProducerDS	Generic	jdbc/mds/PageletProducerDS	WC_Portlet
<input type="checkbox"/>	mds-SpacesDS	Generic	jdbc/mds/SpacesDS	AdminServer, WC_Spaces
<input type="checkbox"/>	mds-wcpsDS	Generic	jdbc/mds/wcpsDS	WC_Uilities
<input type="checkbox"/>	OUCSSDS	Generic	jdbc/OUCSSDS	WC_Spaces, WC_Portlet
<input type="checkbox"/>	OWC_DiscussionDS	Generic	jdbc/OWC_DiscussionsDS	WC_Collaboration
<input type="checkbox"/>	PersonalizationDS	Generic	jdbc/WcpsDS	WC_Uilities

Internet 100%

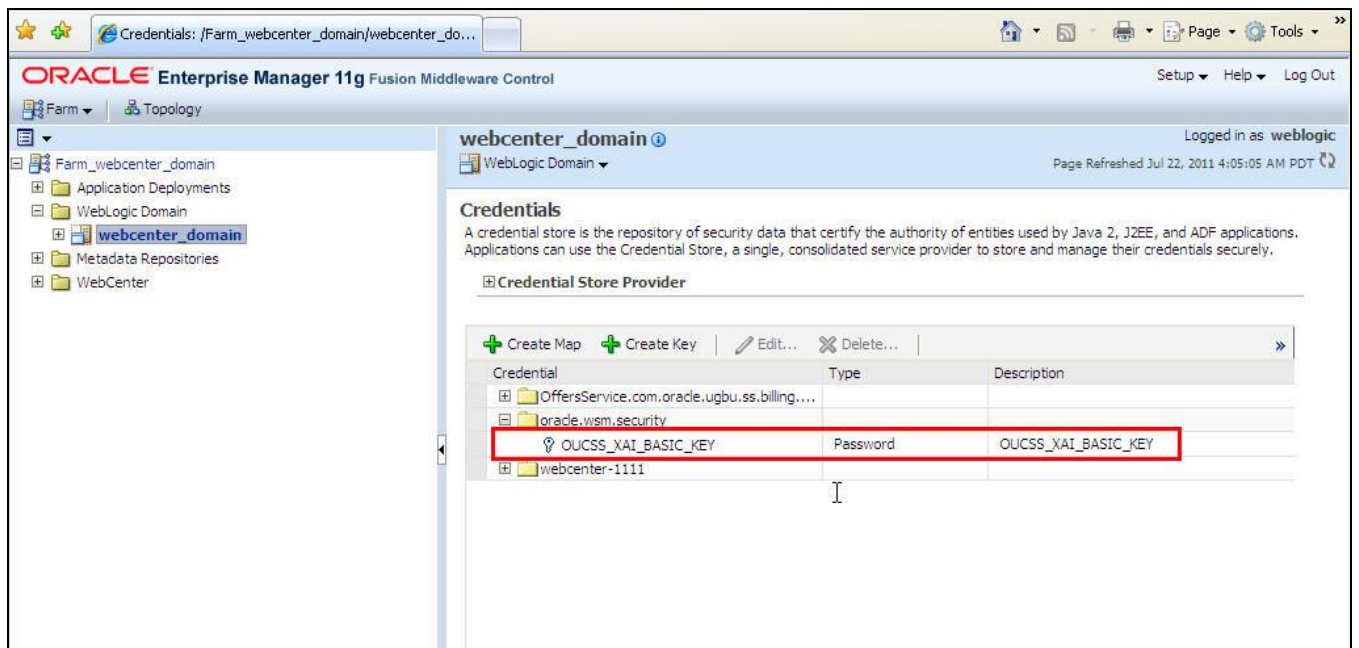
Verify the OUCSS Security Credential

To verify that the Security Credential **OUCSS_XAI_BASIC_KEY** was successfully created:

1. Log in into the Oracle Enterprise Manager console `http://webcenterhostname:WLSAdminServerPort/em` with `wlsadminuser/wlspasswd`.
2. Select **Weblogic_Domain**, then `<webcenter_domainname>`.
3. Click `<webcenter_domainname>`, then choose **Security > Credentials**, as shown in the following image:



4. Under **Credentials** select and expand **oracle.wsm.security**. **OUCSS_XAI_BASIC_KEY** should be present, as shown in the following image:



Verify OUCSS Shared Libraries and Offers Deployment

To verify OUCSS shared library deployment:

1. Log in to the Oracle WebLogic Server console at `http://<webcenterhostname>:<WLSAdminServerPort>/console` as `wlsadminuser/wlsadminpasswd`.
2. Navigate to `webcenter_domain > Deployments`.

The following deployments should be listed:

- `com.oracle.ugbu.ss_2.0.0(11.1.1,11.1.1.4.0)` [as a “Library” deployment]
- `extend.spaces.webapp(11.1.1,11.1.1.2.5)` [as a “Library” deployment]
- `oracle.ugbu.offers_2.0.0` [as an optional “Enterprise Application” deployment]

Note: `oracle.ugbu.offers_2.0.0` deployment depends on the value of the `<OUCCSOfferServiceFlag>` in `Installproperties.xml`. If the value of `<OUCCSOfferServiceFlag>` is set to `true`, `oracle.ugbu.offers_2.0.0` is deployed; if the value is `false`, it is not deployed.

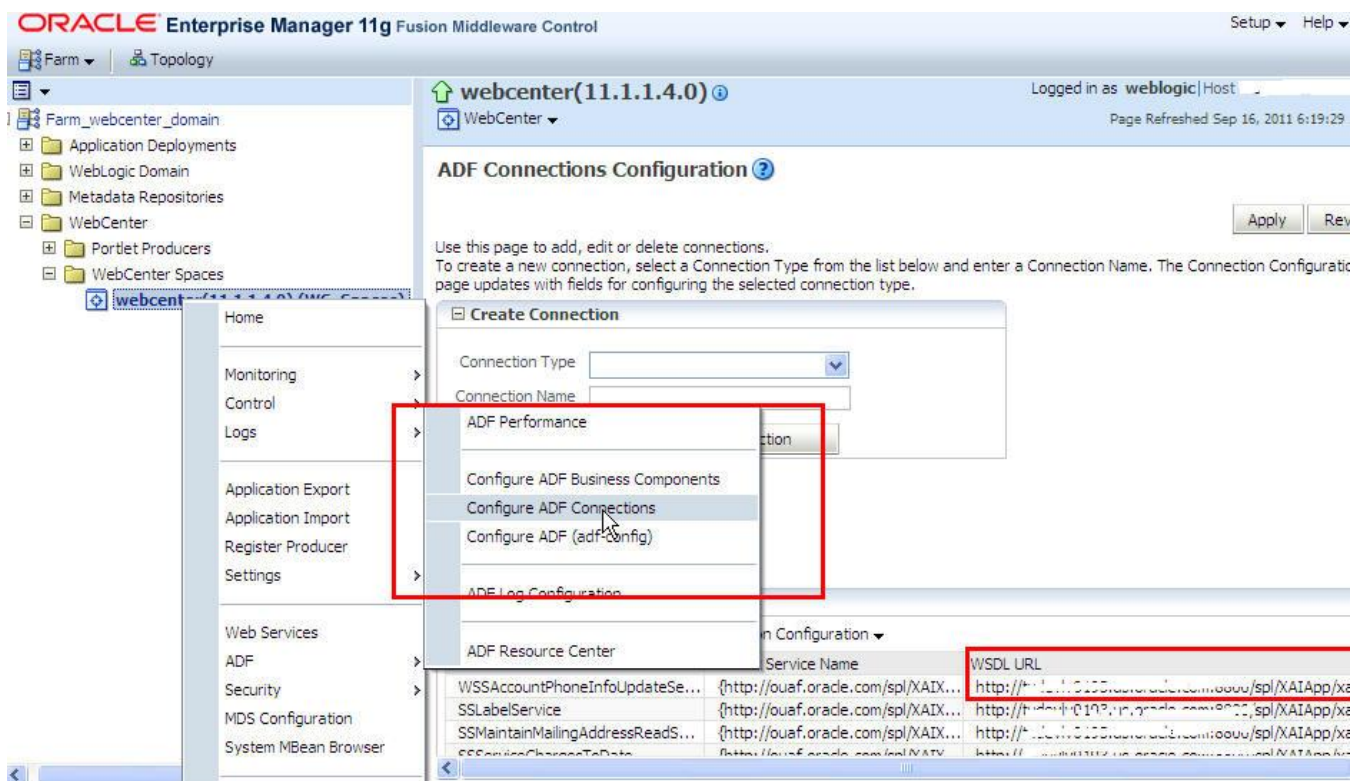
Deployment Name	Status	Type	Size
adf.oracle.domain.webapp(1.0,11.1.1.2.0)	Active	Library	100
analytics-collector (11.1.1.4.0)	New	Enterprise Application	400
cmis-web-lib(11.1.1,11.1.1)	Active	Library	300
com.oracle.ugbu.ss_2.0.0(11.1.1,11.1.1.4.0)	Active	Library	100
conductor-extensions-library(11.1.1,11.1.1)	Active	Library	300
content-app-lib(11.1.1,11.1.1)	Active	Library	300
content-web-lib(11.1.1,11.1.1)	Active	Library	300
custom.webcenter.spaces.fwk(11.1.1,11.1.1)	Active	Library	300
DMS Application (11.1.1.1.0)	Active	Web Application	5
em	Active	Enterprise Application	400
email	Active	Library	100
emas	Active	Library	100
emcore	Active	Library	100
extend.spaces.webapp(11.1.1,11.1.1)	Active	Library	200
extend.spaces.webapp(11.1.1,11.1.1.2.5)	Active	Library	200
FMW Welcome Page Application (11.1.0.0.0)	Active	Enterprise Application	5
jaxrs-framework-web-lib(10.3.2,10.3.2)	Active	Library	300

Deployment Name	Status	Type	Size
oracle.soa.worklist.webapp(11.1.1,11.1.1)	Active	Library	100
oracle.ucm.ridc.app-lib(11.1.1,11.1.1)	Active	Library	100
oracle.ugbu.offers_2.0.0	Active	Enterprise Application	100
oracle.webcenter.activitygraph.engineLib(11.1.1,11.1.1)	New	Library	300
oracle.webcenter.activitygraph.lib(11.1.1,11.1.1)	Active	Library	300

Verify Tokenization of the CCB Edge Application *wsdl*

To verify that the CCB edge application *wsdl* is correctly tokenized:

1. Log in into the Oracle Enterprise Manager console at `http://webcenterhostname:WLSAdminServerPort/em` with `wlsadminuser/wlsadminpasswd`.
2. Select **Webcenter**, expand **WebcenterSpaces**, choose **webcenter(11.1.1.4.0)(WC_Spaces)**, then right-click and choose **ADF > Configure ADF Connections** from the context menu as shown in the following image:



- Under **Web Service Connections** each connection name has a corresponding CCB WSDL URL. Click on any connection name (e.g., **WSSAccountPhoneInfoUpdateService**), click **Edit**, and select **WSDL URL**. The connection URL (e.g., <http://ccbhostname:portno/spl/XAIAApp/xaiserver/WXMaintainPhoneInfo?WSDL>) should open in your browser.
- Repeat Step 3 for all remaining connections to confirm that detokenization has been completed.

Verify OUCSS Group Spaces Deployment

- Log in to the WebCenter Spaces application at <http://<WebCenterSpacesHost>:<WebCenterSpacesPort>/webcenter> with `wcadminuser/wcadminpasswd`.
Note: If on login the message, “Page Not Found. The page you requested is not found” appears, select **Click here to go to home** to continue.
- Select **Administration**, then **Spaces**. Make sure the **OUCSS Development Home** group space is listed, it is **Online**, and it contains one member and two subspaces, as shown in the following image.



- Select the **OUCSS Development Home** group space, then click **Edit**.

Space Options

Space URL: http://tudevl.../webcenter/spaces/oucsl_tf
 To change the URL, go to "Spaces" page in "Home Space"

* Display Name: OUCSS Development Home

Description: Home Group Space for Oracle Utilities using taskflows

Search Keywords:


Created By: on 7/19/11 4:17 PM


State: ☐ Take Space Temporarily Offline

Status: ☐ Close Space Last Changed 7/19/11 4:17 PM

Publish RSS: ☐ Enable RSS Publishing

Display Settings

Space Icon: 
 For best results, select an icon to fit 16 x 16 pixels.

Space Logo: 

Page Template: OUCSS Page Template

Skin: WebCenter Spaces FX

Resource Catalog for Pages: OUCSS Core Taskflows

Resource Catalog for Page Template: [system default]

Navigation: OUCSS Top Navigation

Copyright © 2010, Oracle and/or its affiliates. All rights reserved. About WebCenter Spaces | Administrator | Privacy Statement

4. Click **Subspaces**.

You should see group two group spaces: **OUCSS Account Information** and **OUCSS Administration**. Both should be **Online**. **OUCSS Account Information** should show two members, and **OUCSS Administration** should show three members, as shown in the following image:

All Spaces

Create Export Import Edit About Space

Filter:

Status	State	Display Name	Description	Last Activity	Members	Subspaces
Active	Online	OUCSS Account Information	Account Details of Oracle Utilities Account.	22 hours ago	2	
Active	Online	OUCSS Administration	Group space containing all admin related taskflows.	22 hours ago	3	

Post-Installation Steps

Register New WSS User and Test Functionality

- Browse to the WebCenter Spaces application at `http://<WebCenterSpacesHost>:<WebCenterSpacesPort>/webcenter` and click **Register** to open the **OUCSS Self-Registration** page.

Login to WebCenter Spaces

User Name

Password

Login

Need an account? **Register**

Forgot Password

Work Together

more effectively to increase everyone's productivity

Oracle WebCenter Spaces:
Where individuals and groups come together. Work more effectively and keep everyone in the loop with intuitive tools that help you discover, share, and manage information with just the right portlets, business applications, and Web 2.0 services.

- Spaces**
Focus on a common problem or interest by sharing content, discussing ideas, and keeping track of group events.
- Social Networking**
Find, connect, communicate, and collaborate with people.
- Content Management**
Access, share, and manage a variety of content.
- Home Space**
Manage your personal content, keep up with mail, and create notes to help you stay organized.
- Web 2.0 Services**
Take advantage of tools that help you organize and find content, collaborate with others, and bring all your applications together in one place.
- Page Creation**
Create personal and role-based pages for publishing, sharing, and reuse.
- Composer**
Get creative with your pages by adding, arranging, and managing content and components.
- Enterprise Application Integration**
Interact with Oracle Fusion Applications and Application Unlimited within WebCenter Spaces.

2. Enter the **Username, Password, First and Last Name, and Email Address** in the self-registration page, then click **Register**.

ORACLE WebCenter

Change Language | Help | Login

Self-Registration

* User Name

* Password

* Confirm Password

* First Name

* Last Name

* Email Address

Register

3. An information screen should appear to let you know the user was successfully created, as shown in the following image. Click **Login** to return to the login page.

ORACLE WebCenter

Change Language | Help | Login

Self-Registration

Information

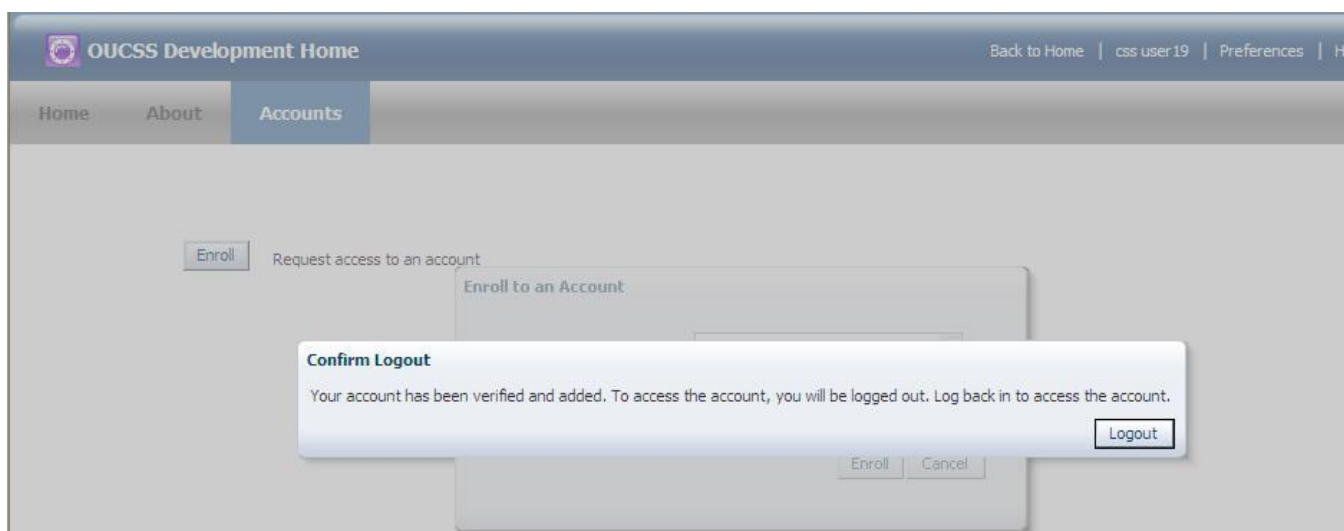
Created user successfully. Please confirm your registration using the link sent to your email address at jtestuser@email.com

4. In the **Login** welcome screen (shown in the following image), enter the newly-registered WSS user name and password, then click the **Login** button.

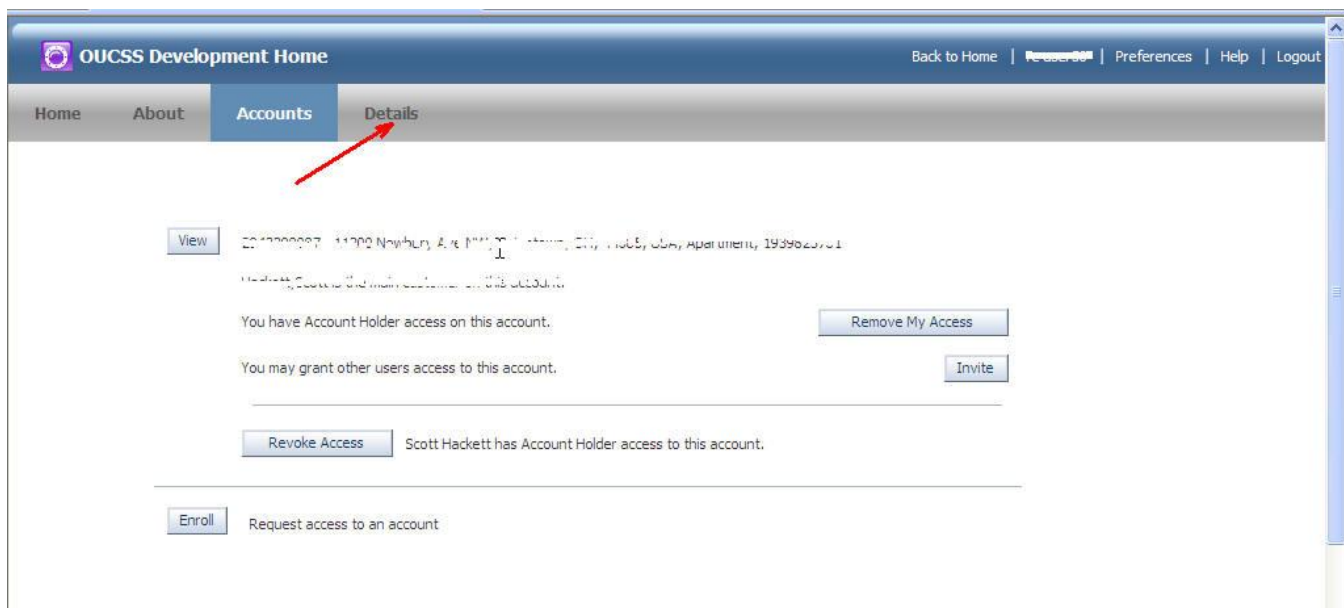
5. When you log in for the first time, the **Self-Registration** page will appear again. Click **Logout**, then log in again with newly-created user/passwd.
6. When the **OUCSS Development Home** page opens, click **Enroll** to open the **Enroll to an Account** details screen.

7. Select the valid enrollment (Residential/Commerical) and enter details, depending upon your environment. If, for example, your account type is "Residential", enter **Account Id** and **Social Security Number** details, then click **Enroll**.

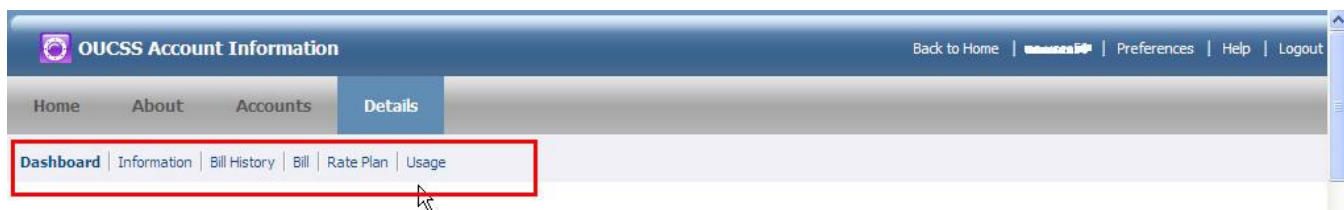
8. After the account has been verified and added, click **Logout**.



9. Log in again to WebCenter Spaces with your WSS user name and password, then click **Details**, as shown in the following image:



10. Verify establishment of the account by checking that all Dashboard, Information, Bill History, Bill, Rate Plan, and Usage functions are working properly.



Verify the Security Configuration

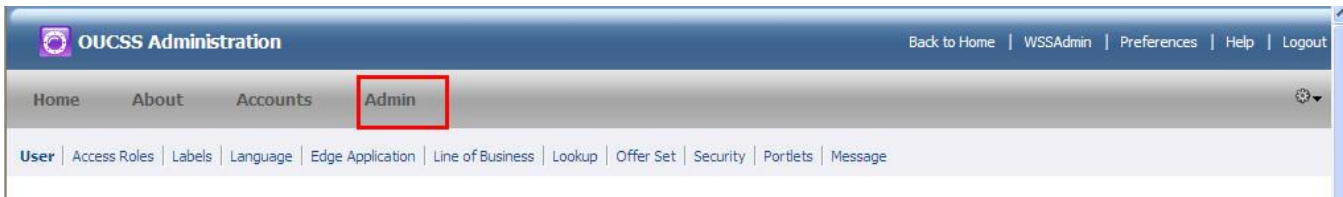
Verify OUCSS Admin Default User “WSSAdmin” Functionality :

1. Connect to the WebCenter Spaces application at `http://<WebCenterSpacesHost>:<WebCenterSpacesPort>/webcenter`.

2. Log in as WSSAdmin/welcome1.

Note: For LDAP security reasons, change the default password for WSSAdmin user from “welcome1” to a new password from the WLS console.

3. Click the **Admin** tab on the menu bar and verify that all **Admin** details (**User**, **Access Roles**, **Labels**, **Language**, **Edge Application**, **Line of Business**, **Lookup**, **Offer Set**, **Security**, **Portlets**, and **Message**) are functioning properly.



Verify OUCSS User “WSSCSR” Functionality

1. Connect to the WebCenter Spaces application at `http://<WebCenterSpacesHost>:<WebCenterSpacesPort>/webcenter`.

2. Log in as WSSCSR/welcome1.

Note: For LDAP security reasons, change the default password for WSSAdmin user from “welcome1” to a new password.

3. Click **Admin** and verify that only the **User Management** portlet is displayed.



Installing CCB-MDM Integrated Flows

This section describes the installation steps for Oracle Utilities Meter Data Management integration with Oracle Utilities Customer Care and Billing.

Software Requirements

The Oracle Utilities Customer Care and Billing Integration to Oracle Utilities Meter Data Management Release 3.1.1 Media Pack must be installed and running on the server.

Note: This integration does *not* require installation of the AIA Foundation Pack.

Pre-Installation Tasks

The following tasks should be completed before you install CCB-MDM integrated flows:

- Ensure that the Oracle SOA Suite is installed and running. (See the *Oracle Utilities Customer Care and Billing Integration to Oracle Utilities Meter Data Management Release 3.1.1 Media Pack Install Guide* for the SOA Suite version number required for the integration).
- For more information on SOA, refer to the documentation at <http://www.oracle.com/technetwork/middleware/soasuite/documentation/index.html#111130>

- Log in to the WebLogic console to confirm there are no changes in **Pending Activation** status.
- Start Node Manager.
- Restart the Enterprise Manager and the WebLogic Administration server.
- Ensure the WebLogic Admin server, SOA server, and Node Manager are running.
- The Oracle Utilities Customer Care and Billing Integration to Oracle Utilities Meter Data Management Release 3.1.1 Media Pack must already be installed and running on the server.
- Note that Oracle Utilities Customer Self Service is installed as a patch using the Oracle OUI-based OPatch tool utility (used for applying/rolling back patches on top of the Oracle Utilities Customer Care and Billing Integration to Oracle Utilities Meter Data Management Release (CCB2-MDM2) product).
- Before applying the patch, ensure that **Product Home** is OUI-based, as described in the next section.

Note: The syntax for **Product Home** depends on whether you are installing on Linux or Windows. On Linux, the variable is `$PRODUCT_HOME`. On Windows, it is `%PRODUCT_HOME%`.

Converting an Existing PRODUCT HOME to an OUI-Based PRODUCT HOME

In future, patches and/or enhancements to this product will be applied using OPatch. Steps mentioned in this section are required for using OPatch. The PRODUCT HOME for CCB2-MDM2 integration must be converted to an OUI-based PRODUCT HOME to use the OPatch utility.

If permissions must be modified for an existing PRODUCT HOME, see the *readme.txt* file shipped with Patch#6486988 for instructions on granting permissions before proceeding.

IMPORTANT:

- If the same version of OUI is present in an Oracle Home directory, see "Steps to install OUI in case of reinstallation" in the *readme.txt* document shipped with Patch#6486988.
- If an *earlier* version of OUI is present in an Oracle Home directory, see "Steps to install OUI in case of upgrade" in the *readme.txt* document shipped with Patch#6486988.

Conversion steps:

1. Install OUI version 11.1.0.9.0 from Patch#6486988 under the PRODUCT HOME directory (in this case, PRODUCT HOME is the CCB2-MDM2 integration home).
2. Download the archive <patch_number>.zip file from the Oracle Automated Release Updates (ARU; <http://aru.us.oracle.com/>).
3. If the folder is read only, remove the read only attribute from the folder.
4. Copy the inventory folder to PRODUCT HOME (CCB2-MDM2).
5. To install, navigate to the install directory:


```
cd <UNZIPDIR>/cd/Disk1/install/
```

 then execute following command to ensure that the same central inventory is used for SOA and PRODUCT HOME:

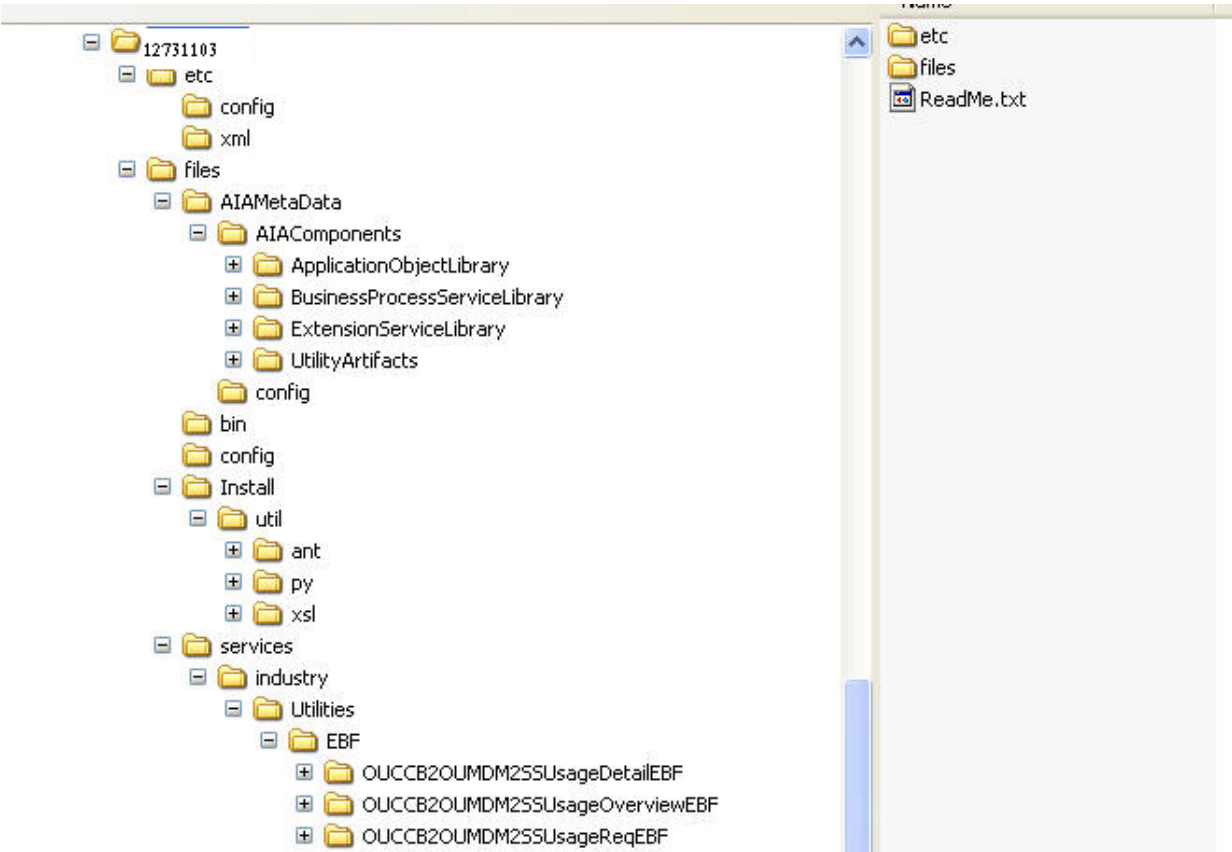

```
./runInstaller -invPtrLoc $SOA_HOME/oraInst.loc
```

 where \$SOA_HOME is XXX/Middleware/Oracle_SOA1
6. Choose **Next** on the Welcome page.
7. Choose the **Custom** install type.
8. Enter the Oracle home where OUI components are to be installed (CCB2-MDM2 integration install home directory).
9. When an "ORACLE HOME not empty" warning is encountered, click **Yes** to proceed.
10. On the **Available Product Components** page, select the checkbox to show all components, including required dependencies. Then drill down and choose all OUI components. Note that **Oracle Installation Products** is selected by default.
11. On the **Summary** page, Check that the OUI components are listed. The summary should include:
 - A. Oracle Installation Products
 - B. Installer SDK Component

- C. Oracle Universal Installer
 - D. Oracle One-Off patch installer.
12. Press **Install** to start the install and to create /oui, /opatch, and /jre folders under PRODUCT HOME.
13. Run **attachHome.sh** from the PRODUCT_HOME/oui/bin folder. This registers the PRODUCT HOME as an Oracle Home in the central inventory.

Installing the Integration

1. Extract the <patch_number>.zip file to create a <patch_number> folder. This folder includes a subfolder hierarchy as shown in the following image. If the folder is read-only, remove the read-only attribute from the folder.



2. Set the following environment variables:

Variable	Example
Unix/Linux and Windows OS	
SOA_HOME	XXX/Middleware/Oracle_SOA1
ORACLE_HOME	XXX/Middleware/Oracle_SOA1
MW_HOME	XXX/Middleware
WL_HOME	XXX/Middleware
PRODUCT_HOME	This is CCB2-MDM2 product installation home. For Example: Unix/Linux: PRODUCT_HOME=/slot/oracle/CCB2-MDM2 Windows: PRODUCT_HOME=D:\Oracle\CCB2-MDM2

The following commands (*setWLSEnv.sh* on Linux or *setWLSEnv.bat* on Windows) set the environment variables used for executing the installation scripts.

On Unix/Linux:

```
source "${WL_HOME}/wlserver_10.3/server/bin/setWLSEnv.sh"
```

On Windows:

```
cd %WL_HOME%\wlserver_10.3\server\bin\  
setWLSEnv.cmd
```

Notes:

- Do not delete the patch_number directory. This directory is used as the download location for patches.
- For a Windows installation, when updating any of the properties listed in the table below, add “/” to the path (e.g., C:/CCB2-MDM2).
- This patch installation will work only when CCB2_MDM2 has been successfully installed and deployed on the server. If it is not deployed or the composites are down for some reason, the patch installation will fail.
- This patch installation uses the values in \$PRODUCT_HOME and its underlying properties file that were used to configure the OUCSS installation.

3. Open a command prompt and execute the following installation scripts for your OS to allow OPatch to copy the files from the patch to the appropriate directories in \$PRODUCT_HOME:

On Linux:

```
$PRODUCT_HOME/OPatch/patch apply -oh $PRODUCT_HOME  
-invPtrLoc$PRODUCT_HOME/oraInst.loc
```

Then:

```
cd $PRODUCT_HOME/bin  
ant -f 12731103.xml  
-DInstallProperties=$PRODUCT_HOME/config/InstallProperties.xml
```

On Windows:

```
%PRODUCT_HOME%\OPatch\patch.bat apply -oh %PRODUCT_HOME%  
cd %PRODUCT_HOME%\bin  
ant -f 12731103.xml -DInstallProperties=%PRODUCT_HOME%\config/InstallProperties.xml
```

4. When the process completes you are prompted to enter the following values:
 - **MDM EDGE Application Server protocol**: allowed values are http or https.
 - **MDM EDGE Application Hostname**: MDM application hostname (e.g., intser0.xxx.xxx.com)
 - **MDM EDGE Application Port Number**: MDM application port number (e.g., 7010)
 - **MDM EDGE Application Context URI**: ouaf
 - **MDM EDGE Application Username**: MDM user name
 - **MDM EDGE Application Password**: MDM password
5. Restart both the WebLogic Admin server and the SOA server to activate the installation processes and ensure that all artifacts are successfully installed.

Post-Installation Checklist for CCB-MDM Flows

Verifying Composites in Enterprise Manager

Verify that the CCB2-MDM2 partition was created with all the composites deployed:

1. Log in to Enterprise Manager.
2. Expand the Farm_soa_domain>soa>soa-infra>CCB2-MDM2 partition.

3. Verify that following three composites are deployed:

- OUCCB2OUMDM2SSUsageDetailEBF
- OUCCB2OUMDM2SSUsageOverviewEBF
- OUCCB2OUMDM2SSUsageReqEBF



Verify Security Credentials from EM

Follow these steps to verify security for connecting to Oracle Utilities Meter Data Management from SOA11g middleware:

1. Log in to the WebLogic EM console using the admin username and password.
2. Expand WebLogic Domain and right-click **soa_domain** > **Security** > **Credentials**.
3. Expand the **oracle.wsm.security** credential and verify that **OU_MDM2_01** was created.

Uninstalling CCB-MDM Integrated Flows

If the deployed composite involves changes made to MDS artifacts, you must first undeploy the composite. Rolling back the patch undeploys the three composites deployed as part of this patch and deletes the implemented security credentials.

To uninstall an existing composite, open a command prompt and execute the following:

On Linux:

```
cd $PRODUCT_HOME\bin
ant -f 12731103.xml uninstallWSSIntegration -
DInstallProperties=$PRODUCT_HOME/config/InstallProperties.xml
$PRODUCT_HOME/OPatch/opatch rollback -id 12731103 $PRODUCT_HOME -invPtrLoc
$PRODUCT_HOME/oraInst.loc
```

On Windows:

```
cd %PRODUCT_HOME%\bin
ant -f 12731103.xml uninstallWSSIntegration -
DInstallProperties=%PRODUCT_HOME%/config/InstallProperties.xml
%PRODUCT_HOME%\OPatch\opatch.bat rollback -id 12731103 -oh %PRODUCT_HOME%
```


Chapter 3

Uninstalling OUCSS

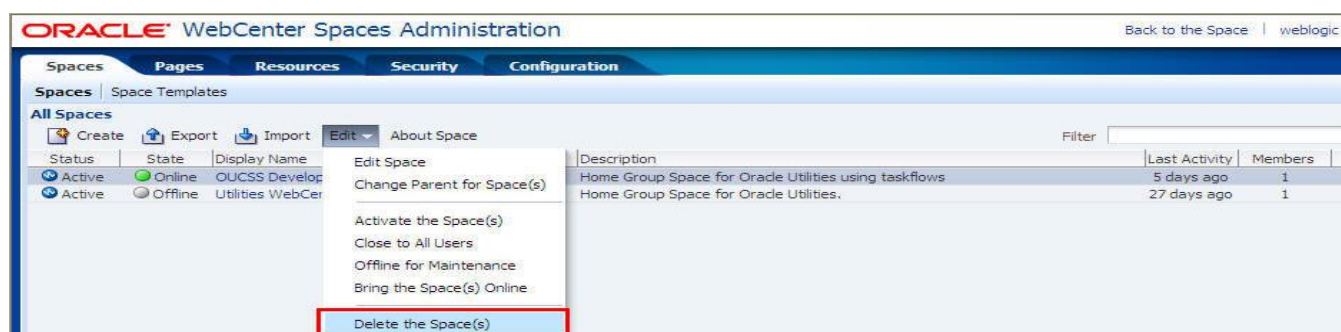
The following procedure describes how to uninstall the default OUCSS installation (shared library). If you used the alternative installation procedure (portlets-based), see “Uninstalling OUCSS Components as Portlets” in *Appendix B* for uninstallation instructions.

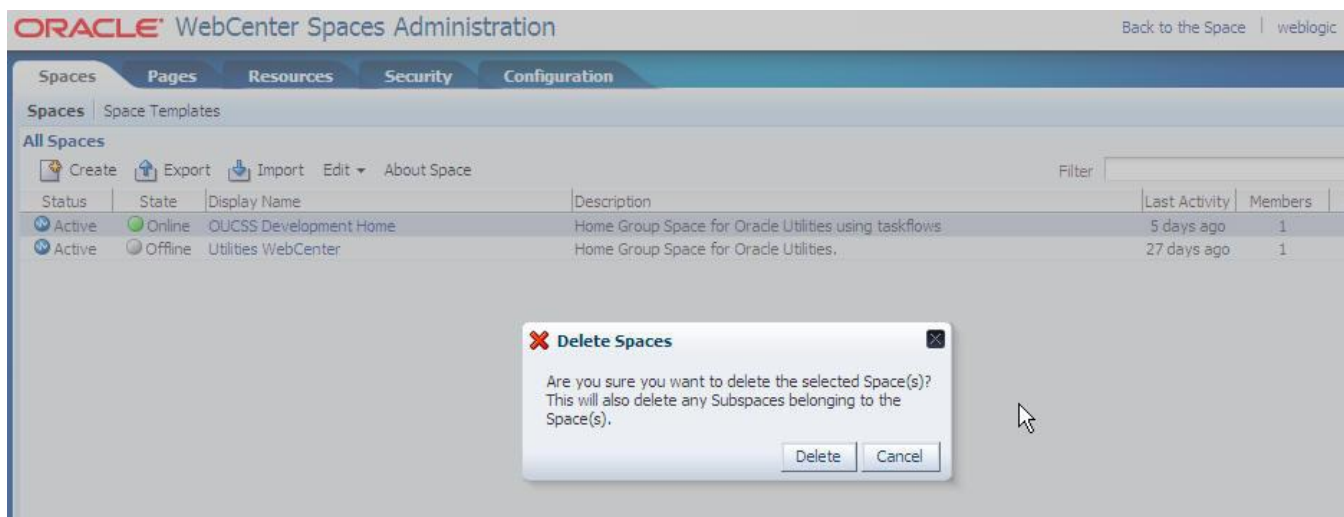
Important: Before running the scripts in this procedure, ensure that WC_Spaces and WC_Portlet are in running mode without any errors and perform Steps 1 through 3 to delete existing group spaces.

1. Log in to the WebCenter Spaces application at `http://<WebCenterSpacesHost>:<WebCenterSpacesPort>/webcenter` as `wcadminuser/wcadminpasswd`.

Note: If on login you see the message, “Page Not Found”, select **Click here to go to home** to continue.

2. Choose **Administration > Spaces > All Spaces** and select the **OUCSS Development Home** group space.
3. Choose **Edit > Delete the Space(s)**, then click **Delete** in the confirmation dialog.





To verify successful deletion of the **OUCSS Development Home** group space, log in to WebCenter Spaces application. The warning message "oucss_tf is no longer available. The Space may have been deleted or renamed" appears after the group space is deleted.

4. Set the `PRODUCT_HOME` environment variable:

On Windows:

```
SET PRODUCT_HOME=D:\OUCSS\webcenter_WSS
echo %PRODUCT_HOME%
```

Echo should return `PRODUCT_HOME` as `D:\OUCSS\webcenter_WSS`.

On Linux:

```
export PRODUCT_HOME=/spl/OUCSS/webcenter_WSS
echo $PRODUCT_HOME
```

Echo should return `PRODUCT_HOME` as `/spl/OUCSS/webcenter_WSS`.

5. Set the WebLogic server environment by running the `setWLSEnv.cmd` script (on Windows) or `setWLSEnv.sh` script (on Linux). The scripts are located in `<WebCenter_Home>\wlserver_10.3\server\bin` (where `<WebCenter_Home>` is the directory in which WebCenter is installed). After running the `setWLSEnv` script, verify that the **wlserver** environment is set in your **classpath** and **path** environment variables.

On Windows:

```
run D:\webcenter\wlserver_10.3\server\bin\setWLSEnv.cmd
```

On Linux:

```
source /spl/wctest/webcenter/wlserver_10.3/server/bin/setWLSEnv.sh
```

6. Use the same `InstallProperties.xml` file located in `<PRODUCT_HOME>/config` that was updated for installation.

Important: Do not update any new values in `InstallProperties.xml` during uninstall; the file should remain the same as it was during installation.

7. Execute the following command to change to `PRODUCT_HOME/bin`:

On Linux:

```
cd $PRODUCT_HOME/bin
```

On Windows:

```
cd %PRODUCT_HOME%\bin
```

8. Run the following command to uninstall the following OUCSS artifacts:

- OUCSS DB user and tables that were created in the database.
- MDS customizations for OUCSS that were imported.
- Security Credentials Map with CCB credentials.

- MailSession.
- OUCSS Shared lib and extend.spaces.webapp (11.1.1, 11.1.1.5.0), used to extend WebCenter.

Important: Ensure that the WebCenter default extension library **extend.spaces.webapp(11.1.1,11.1.1)** is *not* deleted and is listed.

On Windows:

```
ant -f UnInstallBuild.xml -
DInstallProperties=%PRODUCT_HOME%\config\InstallProperties.xml -l uninstall.log
```

On Linux:

```
ant -f UnInstallBuild.xml -DInstallProperties=$PRODUCT_HOME/config/InstallProperties.xml
-l uninstall.log
```

After running the command check *uninstall.log* for any build errors. If “BUILD SUCCESSFUL” does not appear at the end of the file, fix any errors listed in the log before proceeding.

9. Run the deleteConnection command to delete connections to CCB from product_home\bin:

On Windows:

```
ant -f UnInstallBuild.xml deleteConnection -
DInstallProperties=%PRODUCT_HOME%\config\InstallProperties.xml -l deleteConnection.log
```

On Linux:

```
ant -f UnInstallBuild.xml deleteConnection -
DInstallProperties=$PRODUCT_HOME/config/InstallProperties.xml -l deleteConnection.log
```

After running the command (which runs in background) check *deleteConnection.log* for any build errors. If “BUILD SUCCESSFUL” does not appear at the end of the file, fix any errors listed in the log before proceeding.

10. Run the following command to restart the WebCenter managed servers.

On Windows:

```
ant -f UnInstallBuild.xml restartWebcenterPortletServer -
DInstallProperties=%PRODUCT_HOME%\config\InstallProperties.xml -l
restartWebcentermgservers1.log
```

On Linux:

```
ant -f UnInstallBuild.xml restartWebcenterPortletServer -
DInstallProperties=$PRODUCT_HOME/config/InstallProperties.xml -l
restartWebcentermgservers1.log
```

After running the command check *restartWebcentermgservers1.log* for any build errors. If “BUILD SUCCESSFUL” does not appear at the end of the file, fix any errors listed in the log before proceeding.

11. To remove Users and Groups from the WebLogic Embedded LDAP by running the following command from the <PRODUCT HOME>/bin directory:

Note: This command is valid *only* for a WebLogic embedded LDAP.

On Windows:

```
ant -f UnInstallBuild.xml deleteUserGroupWeblogicEmbeddedLdap -
DInstallProperties=%PRODUCT_HOME%\config\InstallProperties.xml -l deleteFromLDAP.log
```

On Linux:

```
ant -f UnInstallBuild.xml deleteUserGroupWeblogicEmbeddedLdap -
DInstallProperties=$PRODUCT_HOME/config/InstallProperties.xml -l deleteFromLDAP.log
```

After running the command check *deleteFromLDAP.log* for any build errors. If “BUILD SUCCESSFUL” does not appear at the end of the file, fix any errors listed in the log before proceeding.

12. Restart the WebCenter environment, including the admin and managed servers.
13. For additional verification of a successful uninstall:
 - A. Log in to the WebLogic console as wlsadminuser/wlsadminpasswd.
 - B. Choose **webcenter_domain > Deployments** and verify that the following are no longer listed:
 - com.oracle.ugbu.ss_2.0.0(11.1.1,11.1.1.4.0)
 - extend.spaces.webapp(11.1.1,11.1.1.2.5)

- oracle.ugbu.offers_2.0.0(enterprise application)

Important: Ensure that the WebCenter default extension library **extend.spaces.webapp(11.1.1,11.1.1)** is *not* deleted and is listed.

- C. Choose **Services > Datasources** and verify that “OUCSSDS” data source is no longer present.
- D. Choose Service > Mail Session and verify that mail/OUCSS mail session is no longer present.
- E. Log in to the Enterprise Manager console as weblogic admin.
- F. Choose **domain > Security > credentials** and verify that the OUCSS credential **oracle.wsm.security > OUCSS_XAI_BASIC_KEY** is no longer present.
- G. Finally, verify that OUCSS DB User is dropped from the database.

Appendix A

The InstallProperties.xml File

The following listing shows the structure and sample data contained in *InstallProperties.xml*.

```
<?xml version="1.0" standalone="yes"?>
<config>
  <WSS2>
    <modulename>PORTLET-APPLICATION</modulename>
    <CCB>
      <hostname>ccbhostname.com</hostname>
      <portnumber>8700</portnumber>
      <servername></servername>
      <protocol>http</protocol>
      <appcontext>spl</appcontext>
      <username>CCBUSER</username>
      <password>xyz#1</password>
    </CCB>
    <WebCenter>
      <AdminServer>
        <hostname>webcenterhostname.com</hostname>
        <portnumber>WLSAdminServerPort</portnumber>
        <servername>AdminServer</servername>
        <username>WLSAdminUser</username>
        <password>xyz#1</password>
        <domainname>webcenter_domain</domainname>
        <realmName>myrealm</realmName>
      </AdminServer>
      <ManagedServer>
        <hostname>abc.oracle.com</hostname>
        <portnumber>WebCenterSpacesPort</portnumber>
        <servername>WC_Spaces</servername>
        <username>WLSAdminUser</username>
```

```
<password>xyz#1</password>
</ManagedServer>
<mdsconfig>
  <mdsdbusername><leave blank-don't update></mdsdbusername>
  <mdsdbuserpassword><leave blank-don't update></mdsdbuserpassword>
  <mdsdbhostname><leave blank-don't update></mdsdbhostname>
  <mdsdbportnumber><leave blank-don't update></mdsdbportnumber>
  <mdsdbsid><leave blank-don't update></mdsdbsid>
</mdsconfig>
<DB>
  <dbusername>WC_WEBCENTER</dbusername>
  <dbuserpassword>xyz#1</dbuserpassword>
  <dbhostname>dbserver1.com</dbhostname>
  <dbportnumber>1521</dbportnumber>
  <dbsid> wcdb1</dbsid>
</DB>
</WebCenter>
<SOA>
  <AdminServer>
    <hostname><leaveblank-don'tupdate></hostname>
    <portnumber><leaveblank-don'tupdate></portnumber>
    <servername><leaveblank-don'tupdate></servername>
    <username><leaveblank-don'tupdate></username>
    <password><leaveblank-don'tupdate></password>
    <domainname><leaveblank-don'tupdate></domainname>
  </AdminServer>
  <ManagedServer>
    <hostname><leaveblank-don'tupdate></hostname>
    <portnumber><leaveblank-don'tupdate></portnumber>
    <servername><leaveblank-don'tupdate></servername>
    <username><leaveblank-don'tupdate></username>
    <password><leaveblank-don'tupdate></password>
  </ManagedServer>
  <mdsconfig>
    <mdsdbusername><leaveblank-don'tupdate></mdsdbusername>
    <mdsdbuserpassword><leaveblank-don'tupdate></mdsdbuserpassword>
    <mdsdbhostname><leaveblank-don'tupdate></mdsdbhostname>
    <mdsdbportnumber><leaveblank-don'tupdate></mdsdbportnumber>
    <mdsdbsid><leaveblank-don'tupdate></mdsdbsid>
  </mdsconfig>
  <partition-name>default</partition-name>
</SOA>
  <WSS>
    <AdminServer>
      <hostname>webcenterhostname.com</hostname>
      <portnumber>WLSAdminServerPort</portnumber>
      <servername>AdminServer</servername>
```

```

    <username>WLSAdminUser</username>
    <password>WLSAdminPasswd</password>
    <domainname>webcenter_domain</domainname>
    <realmName>myrealm</realmName>
  </AdminServer>
  <ManagedServer>
    <hostname> webcenterhostname.com </hostname>
    <portnumber>WC_PortletmanagedServerPort</portnumber>
    <servername>WC_Portlet</servername>
    <username>WLSAdminUser</username>
    <password>xyz#1</password>
  <remote>>false</remote>
</ManagedServer>
<mdsconfig>
  <mdsdbusername>WCCUST_MDS</mdsdbusername>
  <mdsdbuserpassword>manager</mdsdbuserpassword>
  <mdsdbhostname>dbserver.com </mdsdbhostname>
  <mdsdbportnumber>1521</mdsdbportnumber>
  <mdsdbsid>wcdb1</mdsdbsid>
</mdsconfig>
<DB>
  <dba.dbusername>system</dba.dbusername>
  <dba.dbuserpassword>xyz#1</dba.dbuserpassword>
  <dbusername>wssdbinstall1</dbusername>
  <dbuserpassword>xyz#1</dbuserpassword>
  <dbuser.createflag>true</dbuser.createflag>
  <dbhostname>dbserver.com</dbhostname>
  <dbportnumber>1521</dbportnumber>
  <dbsid> wcdb1</dbsid>
</DB>
<offerService>
  <OUCCSOfferServiceFlag>true/false</OUCCSOfferServiceFlag>
  <NonOUCCSOfferServiceURL></NonOUCCSOfferServiceURL>
</offerService>
<MailServer>
  <send>
    <hostname>mail.domain.com</hostname>
    <portnumber>25</portnumber>
    <protocol>smtp</protocol>
    <fromAddress>wssAdmin@domain.com</fromAddress>
  </send>
</MailServer>
</WSS>
</WSS2>
</config>

```

InstallProperties XPath Descriptions and Examples

XPath information contained in *InstallProperties.xml* is as follows:

- `/config/WSS2/CCB`
All subelements of this node contain information specific to CCB.
- `/config/WSS2/WebCenter`
All subelements of this node contain information specific to WebCenter.
- `/config/WSS2/SOA`
All subelements of this node contain information specific to SOA.
- `/config/WSS2/WSS`
All sub-elements of this node contain information specific to WSS (OUCSS).

XPath	Description	Example
modulename	ModuleName for which this installation property is used. Not used by installation framework. Hardcoded to "PORTLET-APPLICATION"	
<code>/config/WSS2/CCB/hostname</code>	Hostname of server hosting CCB application	ccbhostname.oracle.com
<code>/config/WSS2/CCB/portnumber</code>	Portnumber on which CCB application is listening	8500
<code>/config/WSS2/CCB/servername</code>	Managed server name CCB hosting server. Not used in current release, can be left blank	
<code>/config/WSS2/CCB/protocol</code>	Protocol of ccb application url	http
<code>/config/WSS2/CCB/appcontext</code>	Appcontext of ccb application url	If your ccb application url is http://ccbhostname.us.com:8500/spl the appcontext would be "spl"
<code>/config/WSS2/CCB/username</code>	Username which should be use to create OUCSS_XAI_BASIC_KEY CSF Key for CCB XAI Inbound calls	SPLXAI
<code>/config/WSS2/CCB/password</code>	Password which should be use to create OUCSS_XAI_BASIC_KEY CSF Key for CCB XAI Inbound calls	splxai00
<code>/config/WSS2/WebCenter/AdminServer/hostname</code>	Hostname of Admin server of WebLogic domain hosting WebCenter application	webcenterhostname.oracle.com
<code>/config/WSS2/WebCenter/AdminServer/portnumber</code>	Admin server portnumber	7001
<code>/config/WSS2/WebCenter/AdminServer/servername</code>	Admin server name of WebLogic domain hosting WebCenter	AdminServer
<code>/config/WSS2/WebCenter/AdminServer/username</code>	Admin user to connect to Admin server	webLogic
<code>/config/WSS2/WebCenter/AdminServer/password</code>	Admin user password to connect to Admin server	WLSAdminPasswd
<code>/config/WSS2/WebCenter/AdminServer/Domainname</code>	WebLogic domain name hosting WebCenter managed server	wss_domain
<code>/config/WSS2/WebCenter/AdminServer/realmName</code>	Realm name of the embedded WebLogic LDAP configured for WebLogic domain hosting WebCenter	myrealm

/config/WSS2/WebCenter/ManagedServer/hostname	Hostname of Managed server hosting WebCenter	webcenterhostname.oracle.com
/config/WSS2/WebCenter/ManagedServer/portnumber	Managed server portnumber	8888
/config/WSS2/WebCenter/ManagedServer/servename	Managed server name hosting WebCenter	WC_Spaces
/config/WSS2/WebCenter/ManagedServer/username	Managed user to connect to Managed server	weblogic
/config/WSS2/WebCenter/ManagedServer/password	user password to connect to Managed server	WLSAdminPasswd
/config/WSS2/WebCenter/mdsconfig	Leave this & all sub-element as blank as this is currently not used	
/config/WSS2/WebCenter/DB/dbusername	DB username to connect to WebCenter schema. This will generally have suffix as *_WEBCENTER	WSS_WEBCENTER
/config/WSS2/WebCenter/DB/dbuserpassword	Password to connect to WebCenter schema	
/config/WSS2/WebCenter/DB/dbhostname	Hostname to connect to WebCenter schema	dbserver.oracle.com
/config/WSS2/WebCenter/DB/dbportnumber	Portnumber to connect to WebCenter schema	1521
/config/WSS2/WebCenter/DB/dbsid	Service name/sid to connect to WebCenter schema	Wcdb1
/config/WSS2/SOA	Currently not use, will be use when portlet need to connect to SOA composite. Leave this & sub-element as blank	
/config/WSS2/WSS/AdminServer/hostname	Hostname of Admin server of WebLogic domain hosting WSS application	webcenterhostname.oracle.com
/config/WSS2/WSS/AdminServer/portnumber	Admin server portnumber	7001
/config/WSS2/WSS/AdminServer/servename	Admin server name WSS hosting server	AdminServer
/config/WSS2/WSS/AdminServer/username	Admin user to connect to Admin server	Weblogic
/config/WSS2/WSS/AdminServer/password	Admin user password to connect to Admin server	WLSAdminPasswd
/config/WSS2/WSS/AdminServer/Domainname	WebLogic domain name hosting WSS managed server	wss_domain
/config/WSS2/WSS/AdminServer/realmName	Realm name of the embedded WebLogic LDAP configured for WebLogic domain hosting WSS	myrealm
/config/WSS2/WSS/ManagedServer/hostname	Hostname of Managed server hosting WSS. This will host the WSS EAR file	webcenterhostname.oracle.com
/config/WSS2/WSS/ManagedServer/portnumber	Managed server portnumber	8889
/config/WSS2/WSS/ManagedServer/servename	Managed server name hosting WSS	WC_Portlet
/config/WSS2/WSS/ManagedServer/username	Managed user to connect to Managed server	weblogic
/config/WSS2/WSS/ManagedServer/password	user password to connect to Managed server	WLSAdminPasswd

/config/WSS2/WSS/ManagedServer/remote	If the deployment is not happening from physical machine hosting managed server (which will host WSS) then set this value to true else false	false
/config/WSS2/WSS/mdsconfig/mdsdbusername	Username of schema hosting MDS for WSS application.	OUCSSCUST_MDS
/config/WSS2/WSS/mdsconfig/mdsdbuserpassword	Password to connect to schema	
/config/WSS2/WSS/mdsconfig/mdsdbhostname	Hostname to connect to DB	Dbserver.oracle.com
/config/WSS2/WSS/mdsconfig/mdsdbportnumber	Portnumber to connect to DB	Dbportno
/config/WSS2/WSS/mdsconfig/mdsdbsid	SID/service name to connect to schema	Wc1
/config/WSS2/WSS/DB/dba.dbusername	Sys user to connect to DB which will host WSS specific DB objects	System Note : If using sys user then use "sys as sysdba".
/config/WSS2/WSS/DB/dba.dbuserpassword	Sys user password	manager
/config/WSS2/WSS/DB/dbusername	DB username which will host WSS specific DB objects	wssdbinstall1
/config/WSS2/WSS/DB/dbuserpassword	Password of DB username which will host WSS specific DB objects	
/config/WSS2/WSS/DB/dbuser.createflag	Flag to state whether to create DB user or user already exist. Following are the value- true – Create user during installation & drop during uninstallation of WSS false – Do not create/drop user as part of WSS installation/uninstallation as user already exist with connect, resource grants	true
/config/WSS2/WSS/DB/dbhostname	Hostname to connect to DB	Dbserver.oracle.com
/config/WSS2/WSS/DB/dbportnumber	Portnumber to connect to DB	1521
/config/WSS2/WSS/DB/dbsid	SID/service name to connect to DB	Dbserver.oracle.com
/config/WSS2/WSS/OUCCSOfferServiceFlag	OUCCS Offer service flag	true- use Offer service shipped with OUCCS false-use offer service provided by customer in NonOUCCSOfferServiceURL property
/config/WSS2/WSS/NonOUCCSOfferServiceURL	Customer specific offer service URL	http://host:port/Offers?WSDL
/config/MailServer/send/hostname	Mailserver hostname	mail.domain.com
/config/MailServer/send/portnumber	Mailserver portnumber	25
/config/MailServer/send/protocol	Mailserver protocol	Smtp
/config/MailServer/send/fromAddress	Mail server from address	wssAdmin@domain.com

Appendix B

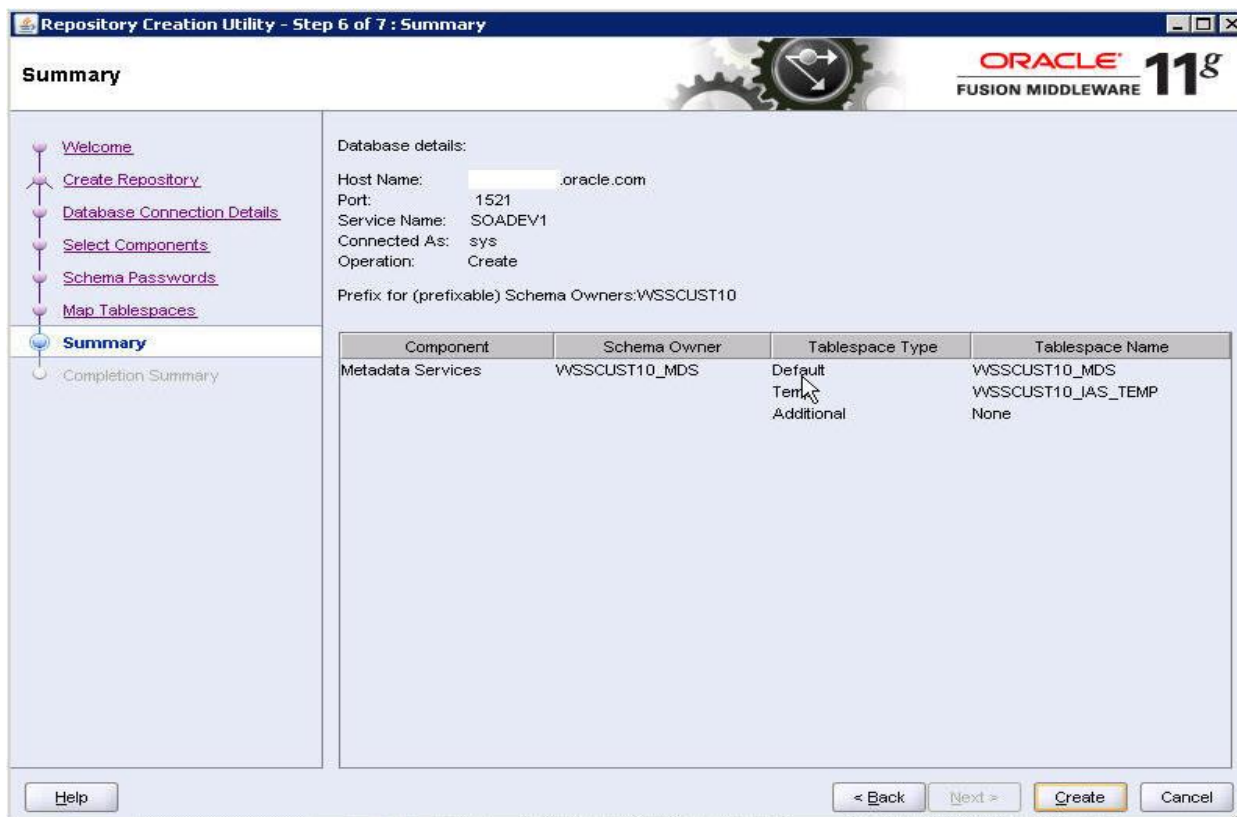
Installing OUCSS Components as Portlets

This section describes an alternative portlets-based approach to installing and uninstalling OUCSS for users implementing a non-WebCenter-based portal solution or for users who may want to integrate OUCSS portlets into an existing WebCenter or non-WebCenter-based portal application.

Note: The default shared library installation approach is described in Chapter 2. For uninstallation of the default installation method, see Chapter 4.

Pre-Installation Tasks

1. Ensure that Oracle WebCenter 11.1.1.4.0 is running (AdminServer, WC_Spaces, WC_Portlet servers are up and running).
2. Run the RCU provided by the Oracle WebCenter installation and create a separate MDS schema in the database for the Oracle Utilities Customer Self Service application.



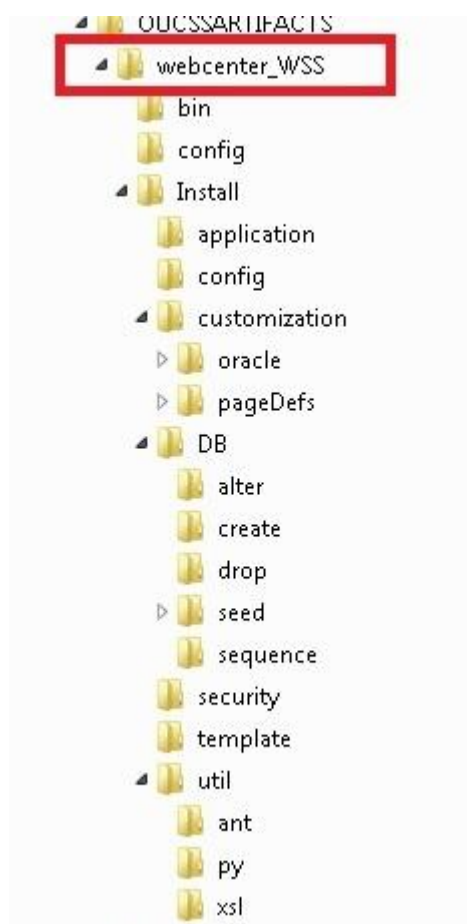
3. Deploy the Offer Service EAR (optional).

Note: If another Offer Service is used instead of the provided web service, the connection information in *InstallProperties.xml* file must be adjusted accordingly.

Deploying OUCSS Components as Portlets into an Existing Portal Application

1. Download <OUCSS-ProductInstall>.zip from Oracle E-Delivery (edelivery.oracle.com) and unzip into a target installation directory (e.g., /spl/OUCSS-ProductInstall on Linux or D:\OUCSS-ProductInstall) on Windows.
2. Locate *webcenter_WSS.zip* in the installation folder and unzip the contents to a *webcenter_WSS* subfolder under the installation folder.

Note: the *webcenter_WSS* folder contains your OUCSS program, configuration, and installation folders and files (/bin, /config, /Install).



3. Set the PRODUCT_HOME environment variable to point to webcenter_WSS:

Windows example:

```
SET PRODUCT_HOME=D:\OUCSS\webcenter_WSS
echo %PRODUCT_HOME%
```

Echo should return PRODUCT_HOME as D:\OUCSS\webcenter_WSS.

On Linux example:

```
export PRODUCT_HOME=/spl/OUCSS/webcenter_WSS
echo $PRODUCT_HOME
```

Echo should return PRODUCT_HOME as /spl/OUCSS/webcenter_WSS.

4. Set the WebLogic server environment by running the *setWLSEnv.cmd* script (on Windows) or *setWLSEnv.sh* script (on Linux). The scripts are located in <WebCenter_Home>\wlserver_10.3\server\bin (where WebCenter_Home is the directory in which WebCenter is installed).

Windows example:

```
run D:\webcenter\wlserver_10.3\server\bin\setWLSEnv.cmd
```

Linux example:

```
source /spl/wctest/webcenter/wlserver_10.3/server/bin/setWLSEnv.sh
```

5. Update the <PRODUCT_HOME>/config/InstallProperties.xml file with values appropriate to your environment (see *Appendix A* for a sample *InstallProperties.xml* file and an explanation of the properties and elements available in the file).
6. cd %PRODUCT_HOME%\bin(windows) and cd \$PRODUCT_HOME/bin(Linux) to change PRODUCT_HOME/bin
7. Run the deployment/installation command to import default OUCSS users and groups into the WebLogic LDAP.

Note: This command is valid only if you are using a WebLogic embedded LDAP; it is not valid on other LDAPs.

On Windows:

```
ant -f InstallBuild.xml importLDIFWeblogicEmbeddedLDAP -
DInstallProperties=%PRODUCT_HOME%\config\InstallProperties.xml -l importLDAP.log
```

On Linux:

```
ant -f InstallBuild.xml importLDIFWeblogicEmbeddedLDAP -
DInstallProperties=$PRODUCT_HOME/config/InstallProperties.xml -l importLDAP.log
```

After running the command check *importLDAP.log* for any build errors. If “BUILD SUCCESSFUL” does not appear at the end of the file, fix any errors listed in the log before proceeding.

8. Verify user and group creation by logging in to the Oracle WebLogic Server console at `http://<webcenterhostname>:<WLSAdminServerPort>/console` as `wlsadminuser/wlsadminpasswd`.
 - A. Select **webcenter_domain > Security Realms > myrealm > Users and Groups**.
 - B. Verify that the users WSSAdmin and WSSCSR were created.
 - C. Verify that the groups WSSAdminGroup, WSSCSRGroup, WSSEnrolledGroup, and WSSGroup were created.
9. Run the deployment/installation command to install OUCSS artifacts (OUCSS Schema, Data Source, CredentialMap, MailSession).

On Windows:

```
ant -f InstallBuild.xml PortletInstall -
DInstallProperties=%PRODUCT_HOME%\config\InstallProperties.xml -l install.log
```

On Linux:

```
ant -f InstallBuild.xml PortletInstall -
DInstallProperties=$PRODUCT_HOME/config/InstallProperties.xml -l install.log
```

After running the command check *install.log* for any build errors. If “BUILD SUCCESSFUL” does not appear at the end of the file, fix any errors listed in the log before proceeding.

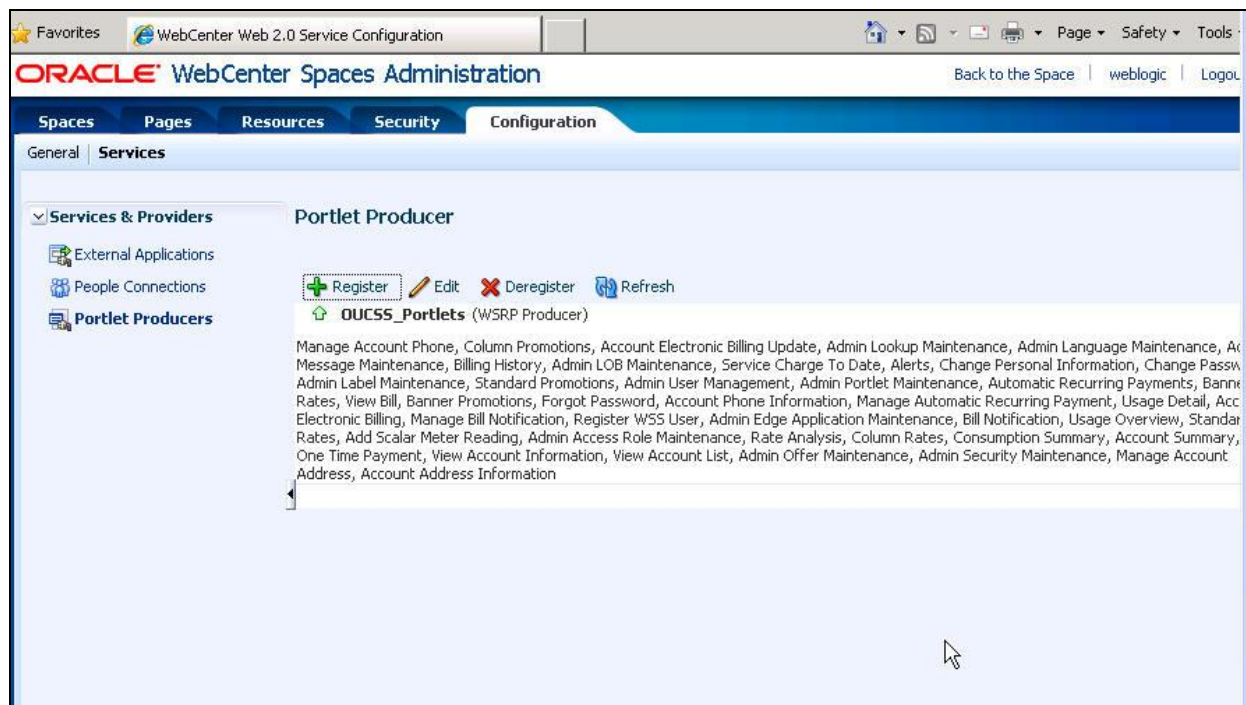
10. Register the portlet producer by logging in to `http://<webcenter_hostname>:WebCenterSpacesPort/webcenter` as `wcadminuser/wcadminpasswd`, then:
 - A. Select **Administration > Configuration > Services**.
 - B. Select **PortletProducers > Register** and use the following values:

ProducerName	OUCSS_Portlets Important: Use only OUCSS_Portlets for registration.
ProducerType	WSRP Producer
WSDL URL	<code>http://WC_PortletmanagedServerHost:WC_PortletmanagedServerPort/WSSPortlets/portlets/wsrp2?WSDL</code>
Advanced Configuration > DefaultExecutionTimeout (seconds)	30
Security	Select the token profile used for authentication with this WSRP producer.
TokenProfile	Per the selected security level; if no security is used, choose None.

11. After providing the above values click **Test** to test the connection.

Note: If the test is not successful and OUCSS_Portlets Producer registration fails, then there is issue with deployment of OUCSS. Check install.log for any error(s) and adjust accordingly.

12. Click **OK** to register. The process may run for some time, depending on your environment.
13. After registration is successful, OUCSS_Portlets Producer should display results similar to those in the following image:



14. Manually restart the WC_Portlet and WC_Spaces managed servers, and the WebLogic admin server including node manager.

Note: The servers can be restarted using either the Administration console or the command line.

Post-Installation Steps

Use this checklist to verify that OUCSS correctly installed.

Verify OUCSS Schema and Data Source Configuration

Log into the database with the OUCSS dbuser/passwd credentials you created during the installation process. Verify that the following tables exist by executing the query `select *`.

- SS_ACCESS_ROLE
- SS_ACCESS_ROLE_L
- SS_CONFIGURATION
- SS_EDGE_APPLICATION
- SS_EDGE_APPLICATION_L
- SS_KEYS
- SS_LABEL
- SS_LABEL_L

- SS_LANGUAGE
- SS_LINE_OF_BUSINESS
- SS_LINE_OF_BUSINESS_L
- SS_LOB_ACCESS_ROLE
- SS_LOB_ACCESS_ROLE_PORTLET
- SS_LOB_ACCROLE_PRTLT_ACTION
- SS_LOOKUP
- SS_LOOKUP_L
- SS_LOOKUP_VAL
- SS_LOOKUP_VAL_L
- SS_MESSAGE
- SS_MESSAGE_L
- SS_OFFER
- SS_OFFER_LANGUAGE
- SS_OFFER_SET
- SS_OFFER_SET_L
- SS_PORTLET
- SS_PORTLET_ACTION
- SS_PORTLET_L
- SS_USER
- SS_USER_LOB_ACCESS_ROLE

Verify the OUCSS Data Source

1. Log in to the Oracle WebLogic Server console at `http://webcenterhostname:WLSAdminServerPort/console` with `wlsadminuser/wlsadminpasswd`.
2. Select the `<webcenter_domainname>`, expand **Services**, then **Messaging**, and click **Data Sources**.
3. The **Data Sources** summary should show the OUCSS data source provided during installation (and as specified in *InstallProperties.xml*).

Configuration editing is enabled. Future changes will automatically be activated as you modify, add or delete items in this domain.

Domain Structure

- Deployments
 - Services
 - Messaging
 - Data Sources**
 - Persistent Stores
 - Foreign JNDI Providers
 - Work Contexts
 - XML Registries
 - XML Entity Caches
 - JCOM
 - Mail Sessions
 - File T3
 - JTA
 - Security Realms

How do I...

- Create JDBC generic data sources
- Create JDBC GridLink data sources
- Create JDBC multi data sources
- Delete JDBC data sources
- Delete JDBC multi data sources

System Status

Health of Running Servers

Failed (0)

Summary of JDBC Data Sources

Configuration | Monitoring

A JDBC data source is an object bound to the JNDI tree that provides database connectivity through a pool of JDBC connections. Applications can look up a data source on the JNDI tree and then borrow a database connection from a data source.

This page summarizes the JDBC data source objects that have been created in this domain.

[Customize this table](#)

Data Sources (Filtered - More Columns Exist)

New | Delete | Showing 1 to 10 of 11 | Previous | Next

<input type="checkbox"/>	Name	Type	JNDI Name	Targets
<input type="checkbox"/>	ActivitiesDS	Generic	jdbc/ActivitiesDS	WC_Uilities, WC_Spaces
<input type="checkbox"/>	mds-OUCSS_MDS_REPO	Generic	jdbc/mds/OUCSS_MDS_REPO	AdminServer, WC_Portlet
<input type="checkbox"/>	mds-owsm	Generic	jdbc/mds/owsm	AdminServer, WC_Collaboration, WC_Portlet, WC_Spaces
<input type="checkbox"/>	mds-PageletProducerDS	Generic	jdbc/mds/PageletProducerDS	WC_Portlet
<input type="checkbox"/>	mds-SpacesDS	Generic	jdbc/mds/SpacesDS	AdminServer, WC_Spaces
<input type="checkbox"/>	mds-wcpsDS	Generic	jdbc/mds/wcpsDS	WC_Uilities
<input type="checkbox"/>	OUCSSDS	Generic	jdbc/OUCSSDS	WC_Portlet
<input type="checkbox"/>	OWC_DiscussionDS	Generic	jdbc/OWC_DiscussionsDS	WC_Collaboration

Verify the Creation of OUCSS_XAI_BASIC_KEY

To verify that the OUCSS_XAI_BASIC_KEY credential key was created in the WebLogic domain:

1. Log in into the Oracle Enterprise Manager console <http://webcenterhostname:WLSAdminServerPort/em> with `wlsadminuser/wlspasswd`.
2. Select **Weblogic_Domain**, then `<webcenter_domainname>`.

File Edit View Favorites Tools Help

McAfee

Links Applications Documentation B S N L HYDERABAD Batch File Help BUG Customize Links Database 11g Knowledge Zone Partner Network Oracle

/Farm_webcenter_domain/webcenter_domain (Oracle...)

ORACLE Enterprise Manager 11g Fusion Middleware Control Setup Help Log Out

Farm Topology

Farm_webcenter_domain

- Application Deployments
- WebLogic Domain
 - webcenter_domain**
- Metadata Repositories
- WebCenter

webcenter_domain WebLogic Domain

Logged in as weblogic

Page Refreshed Jul 22, 2011 4:03:33 AM PDT

Summary

General

Administration Server AdminServer

Administration Server Host tudevly0153.us.oracle.com

Administration Server Listen Port 7001

To configure and manage this WebLogic Domain, use the [Oracle WebLogic Server Administration Console](#).

Servers

60% Up (3) 40% Down (2)

Search

Clusters

Search

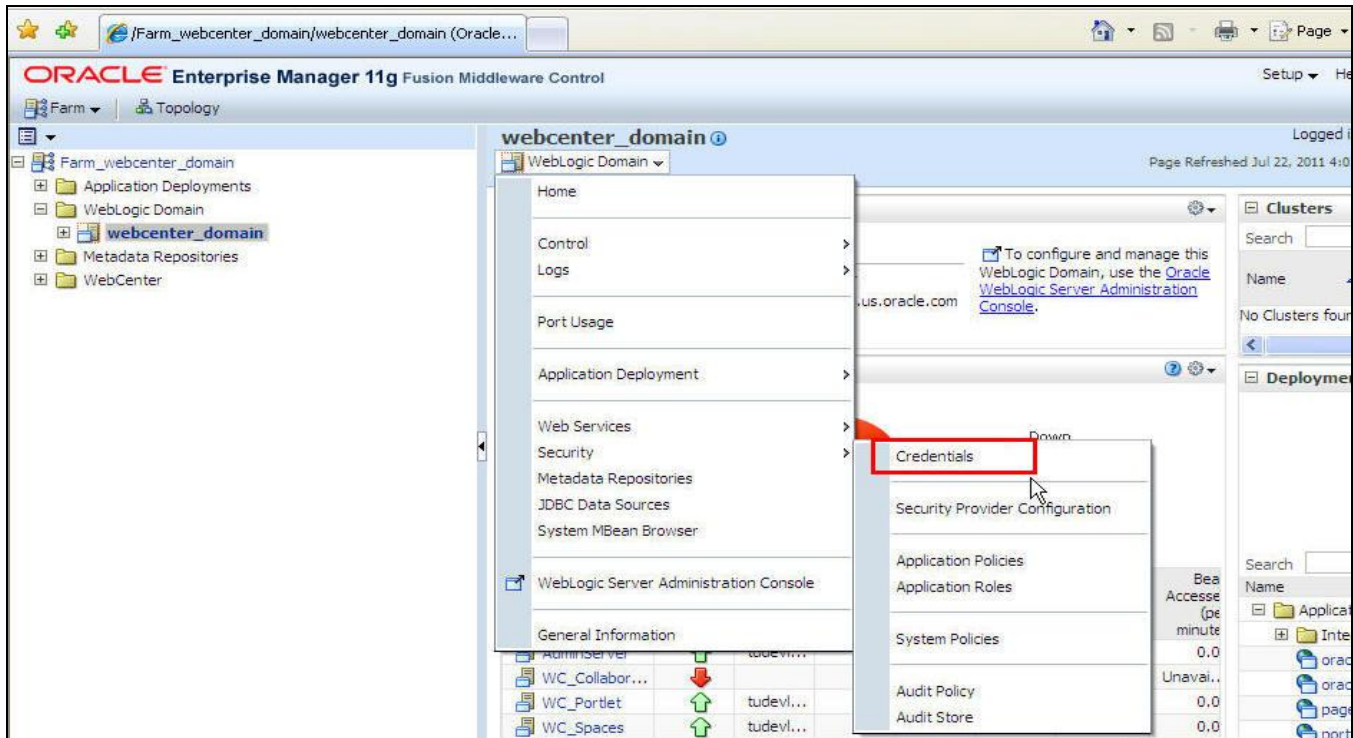
Name

No Clusters found

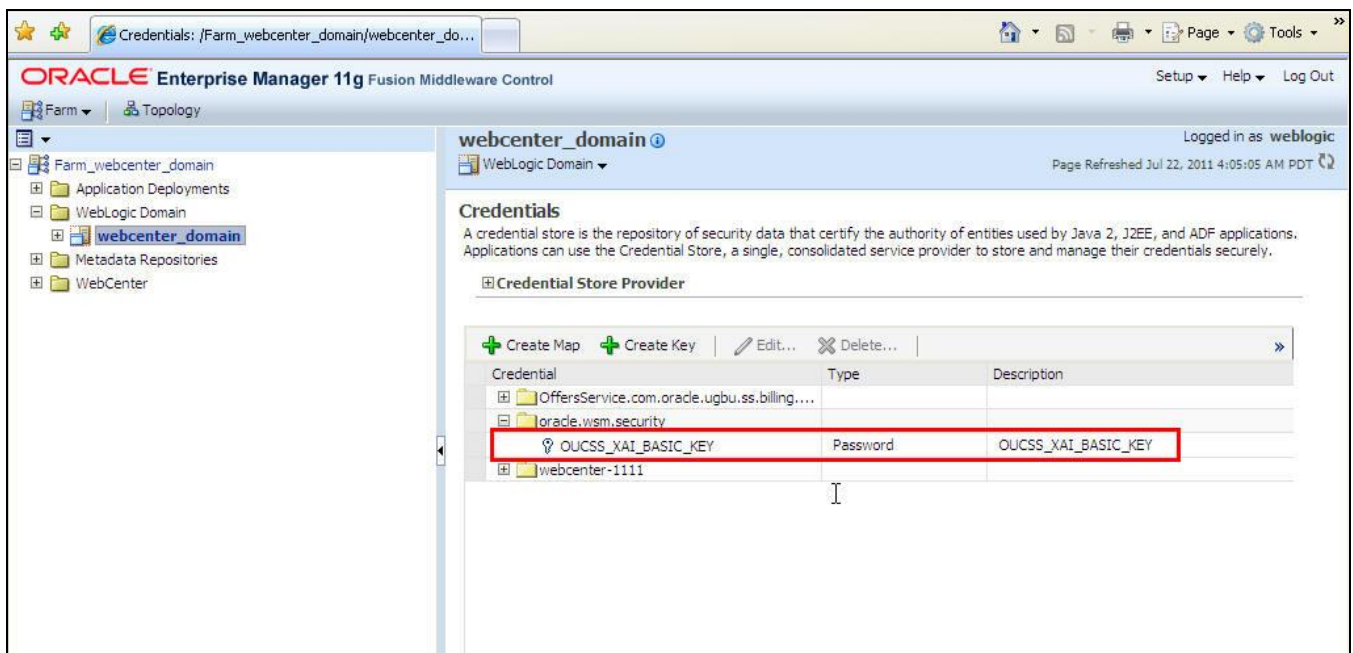
Deployments

Search

- Click <webcenter_domainname>, select **Security**, then choose **Credentials**, as shown in the following image:

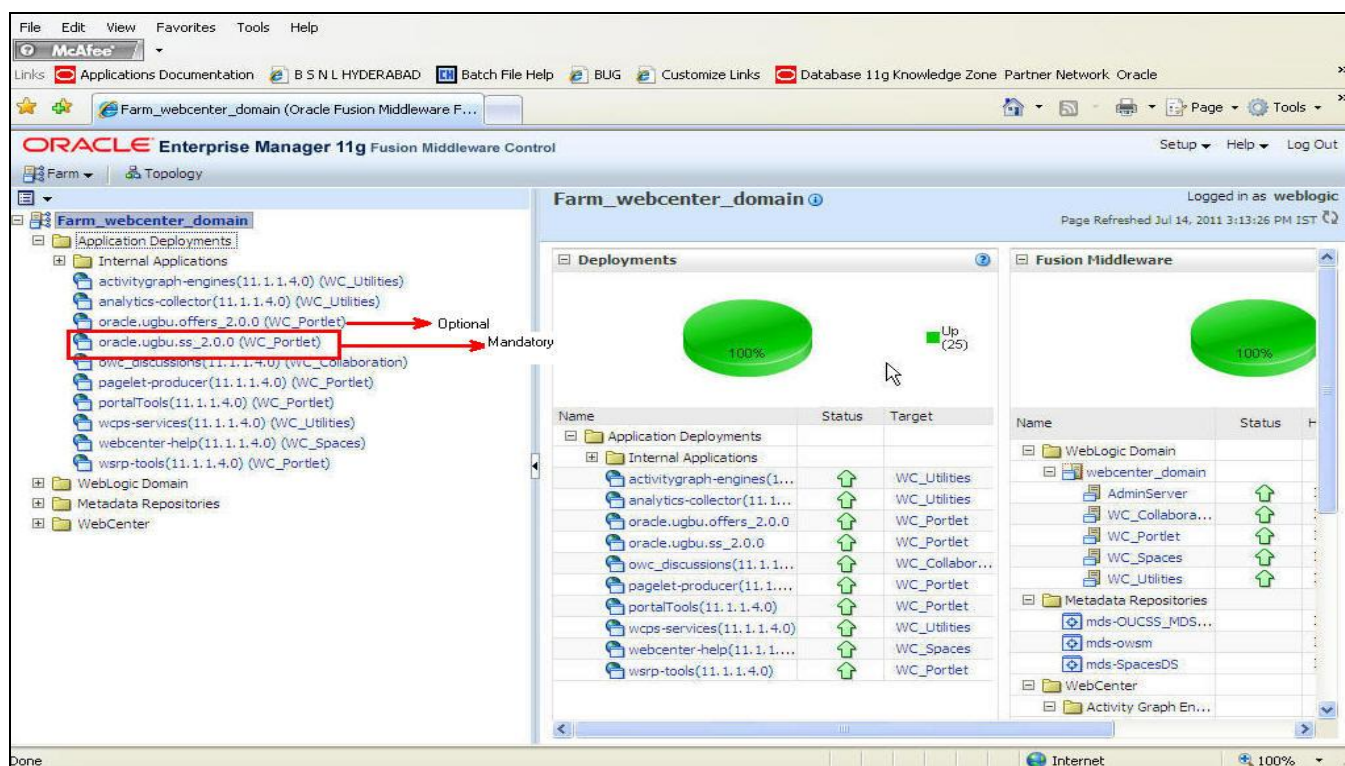


The credentials for **oracle.wsm.security** should show a **Credential** named **OUCSS_XAI_BASIC_KEY** (created by OUCSS Installation).



Verify OUCSS Application Deployment

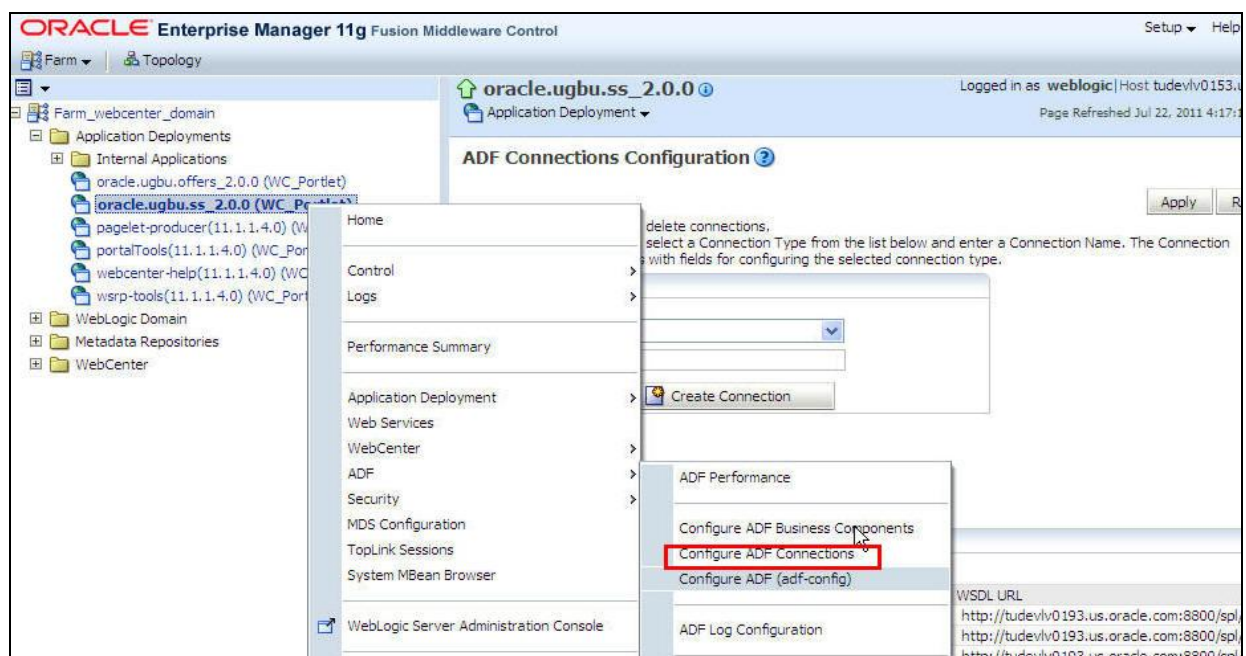
- Log in into the Oracle Enterprise Manager console at <http://webcenterhostname:WLSAdminServerPort/em> with `wlsadmin/wlspasswd`.
- Expand **Application Deployments** and verify the presence of OUCSS Producer application **oracle.ugbu.ss_2.0.0** (mandatory) and **oracle.ugbu.offers_2.0.0** (optional).



Verify Tokenization of the CCB Edge Application *wsdl*

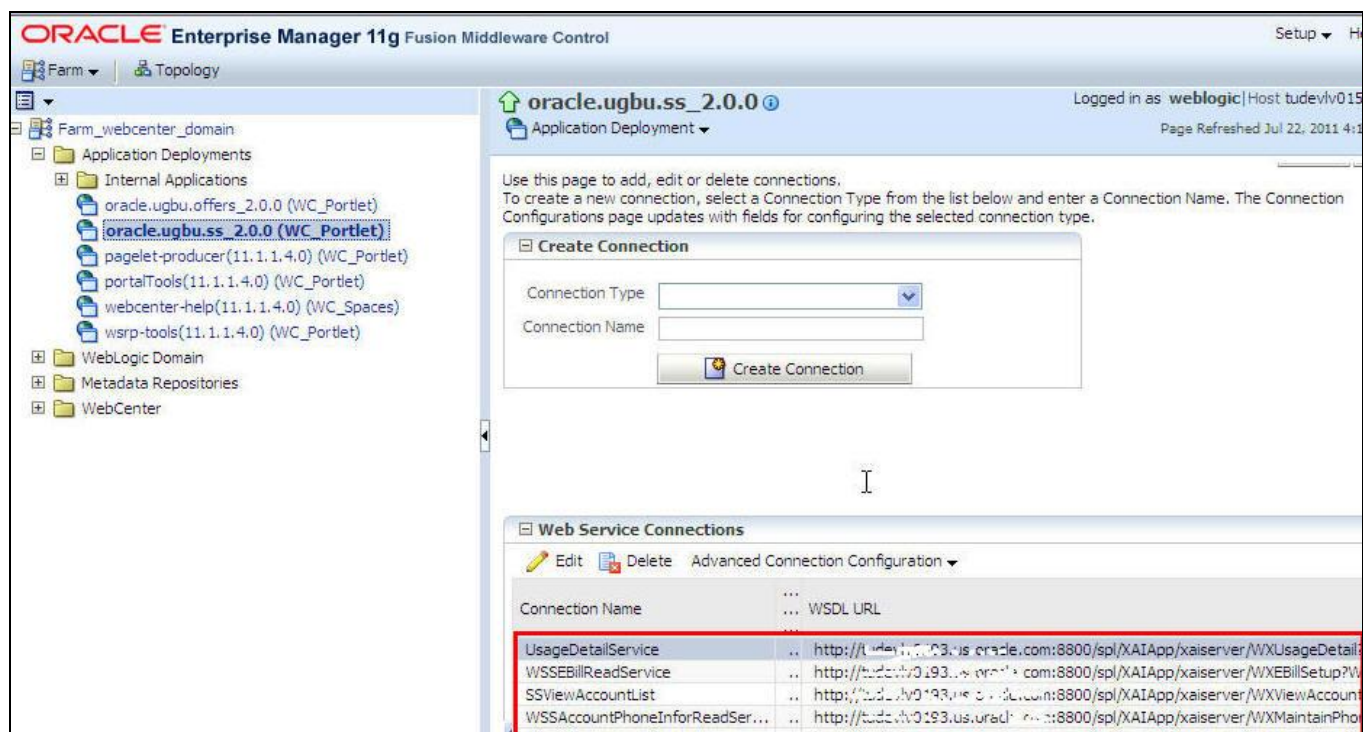
To verify that the CCB edge application *wsdl* is correctly tokenized:

1. Log in into the Oracle Enterprise Manager console at <http://webcenterhostname:WLSAdminServerPort/em> with `wlsadminuser/wlsadminpasswd`.
2. Click **Application Deployments**, select **oracle.ugbu.ss_2.0.0 (WC_Portlet)**, then right-click and select **ADF > Configure ADF Connections** from the context menu.



3. Under **webserver connections**, each connection name should show a corresponding CCB WSDL URL.

- Click on any connection name (e.g., **UsageDetailService**), click **Edit**, select **WSDL URL**, and open the connection in your browser. If the WSDL URL is correctly formed (e.g., `http://ccbhostname:ccbportno/spl/XAIApp/xaiserver/WXUsageDetail?`) and WSDL opens, then tokenization has been completed correctly.
- Repeat this verification procedure for all remaining connections.



Post-Installation Task: Update SS_Configuration

Update **SS_CONFIGURATION** table values by modifying the following properties to match your environment:

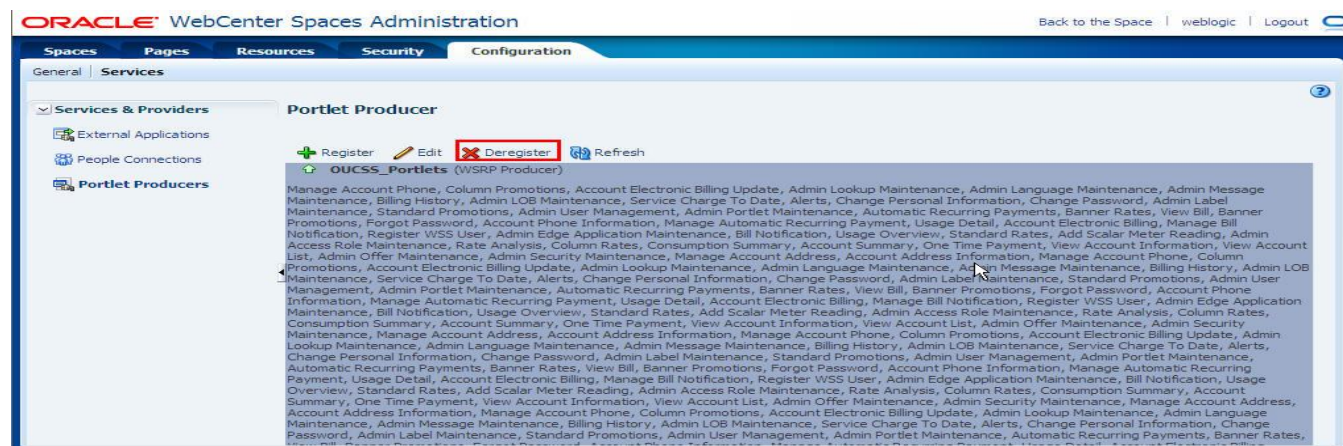
Property	Description	Default Value
installation.owner.flag	This is the current installation owner flag. When the product will be shipped this property should be CM	CM
oucss.default.locale	Default Locale of OUCSS Application	en
edgeapplication.ccb.datas ource	This is the edge application code. E.g. C1, M1 etc. from where the data is pulled.	C1
lookups.webservice.status	Status of the Lookup Value inserted using this service. Only allowed values are ACTIVE, INACTIVE.	ACTIVE
validate.regex.email	Regular expression to validate email address in OUCSS UI.	[a-zA-Z0-9_%+-.]+@[a-zA-Z0-9-]+\.[a-zA-Z]{2,4}
validate.regex.username	Regular expression to validate a valid user name that can be used when registering.	[a-zA-Z0-9_]*
validate.regex.password	Regular expression to validate the password pattern that can be used when registering or changing user password.	[a-zA-Z0-9_]*
validate.length.password. min	Integer value for minimum length of the password that should accepted when registering or changing password.	6

validate.length.password.max	Integer value to allow maximum length of the password when registering or changing password.	12
mail.session.jndi.name	JNDI of Mail Session to send emails.	mail/UCSS
webcenter.register.url	This will be used in the registration email which is sent to the user with the registration key and a URL. User shall click on this link in the email to complete the OUCSS registration.	http://webcenterserverhostname:webcenterspacespor t/webcenter/spaces/oucss/page/Accounts?regKey=
webcenter.login.url	This property will be used in email messages to send the user the login URL.	http://webcenterserverhostname:webcenterspacespor t/webcenter/spaces/oucss/page/Accounts

Uninstalling OUCSS Components as Portlets

Important: This procedure is required only if you performed a portlets-based OUCSS deployment as described in this Appendix. If you chose to install OUCSS using the default (shared library) approach described in Chapter 2, see Chapter 4 for uninstallation steps.

1. Log in to the WebCenter Spaces application at <http://<WebCenterSpacesHost>:<WebCenterSpacesPort>/webcenter> with `wcadminuser/wcadminpasswd`.
Note: If on login you see the message, “Page Not Found”, select **Click here to go to home** to continue.
2. Choose **Administration > Spaces > All Spaces**, select the **Utilities WebCenter** group space, choose **Edit > Delete the space(s)**, then click **OK** to confirm.
3. Click **Logout** and manually restart the WC_Portlet and WC_Spaces managed servers.
4. Manually unregister the portlet producer:
 - A. Log in to the WebCenter Spaces application at <http://<WebCenterSpacesHost>:<WebCenterSpacesPort>/webcenter> with `wcadminuser/wcadminpasswd`.
Note: If on login you see the message, “oucss is no longer available. The Space may have been deleted or renamed”, select **Click here to go to home** to continue.
 - B. Go to **Administration > Configuration > Services**, select **PortletProducers**, then select **OUCSS_Portlets(WRSP Producer)** and click **Deregister**.



- C. When the confirmation message appears, click **OK**. “OUCSS_Portlets (WRSP Producer)” should no longer appear under Portlet Producer when successfully deregistered.
Note: This process may run for several minutes, depending upon your environment.
5. Set the `PRODUCT_HOME` environment variable:
On Windows:


```
SET PRODUCT_HOME=D:\OUCSS\webcenter_WSS
echo %PRODUCT_HOME%
```

Echo should return `PRODUCT_HOME` as `D:\OUCSS\webcenter_WSS`.

On Linux:

```
export PRODUCT_HOME=/spl/OUCSS/webcenter_WSS
echo $PRODUCT_HOME
```

Echo should return `PRODUCT_HOME` as `/spl/OUCSS/webcenter_WSS`.

6. Set the WebLogic server environment by running the *setWLSEnv.cmd* script (on Windows) or *setWLSEnv.sh* script (on Linux). The scripts are located in `<WebCenter_Home>\wlserver_10.3\server\bin` (where *WebCenter_Home* is the directory in which WebCenter is installed).

On Windows:

```
run D:\webcenter\wlserver_10.3\server\bin\setWLSEnv.cmd
```

On Linux:

```
source /spl/wctest/webcenter/wlserver_10.3/server/bin/setWLSEnv.sh
```

7. Remove OUCSS artifacts (OUCSS Schema, Data Source, CredentialMap, Mailsession) by running the following command from the `<PRODUCT_HOME>/bin` directory:

Important: The same *InstallProperties.xml* file (`<PRODUCT_HOME>/config/InstallProperties.xml`) that was used for installation should be used in this step. Do not update any new values in *InstallProperties.xml* during undeployment; the file should remain same as it was during installation.

On Windows:

```
cd %PRODUCT_HOME%\bin
ant -f UnInstallBuild.xml PortletunInstall -
DInstallProperties=%PRODUCT_HOME%\config\InstallProperties.xml -l uninstallProducer.log
```

On Linux:

```
cd $PRODUCT_HOME/bin
ant -f UnInstallBuild.xml PortletunInstall -
DInstallProperties=$PRODUCT_HOME/config/InstallProperties.xml -l uninstallProducer.log
```

After running the command check *uninstallProducer.log* for any build errors. If “BUILD SUCCESSFUL” does not appear at the end of the file, fix any errors listed in the log before proceeding.

8. Remove **Users and Groups** from the WebLogic Embedded LDAP by running the following command from the `<PRODUCT_HOME>/bin` directory:

Note: This command is valid *only* for a WebLogic embedded LDAP.

On Windows:

```
ant -f UnInstallBuild.xml deleteUserGroupWeblogicEmbeddedLdap -
DInstallProperties=%PRODUCT_HOME%\config\InstallProperties.xml -l deleteFromLDAP.log
```

On Linux:

```
ant -f UnInstallBuild.xml deleteUserGroupWeblogicEmbeddedLdap -
DInstallProperties=$PRODUCT_HOME/config/InstallProperties.xml -l deleteFromLDAP.log
```

After running the command check *deleteFromLDAP.log* for any build errors. If “BUILD SUCCESSFUL” does not appear at the end of the file, fix any errors listed in the log before proceeding.

When the process completes, log in to the Oracle Enterprise Manager console and check that the OUCSS deployments have been removed (under **Application Deployments**), and that all OUCSS data sources, mds, database tables, and database user data have been deleted.