

# AutoVue Integration SDK

## User Guide

Copyright © 1998, 2011, Oracle and/or its affiliates. All rights reserved. The Programs (which include both the software and documentation) contain proprietary information; they are provided under a license agreement containing restrictions on use and disclosure and are also protected by copyright, patent, and other intellectual and industrial property laws. Reverse engineering, disassembly, or decompilation of the Programs, except to the extent required to obtain interoperability with other independently created software or as specified by law, is prohibited. The information contained in this document is subject to change without notice. If you find any problems in the documentation, please report them to us in writing. This document is not warranted to be error-free. Except as may be expressly permitted in your license agreement for these Programs, no part of these Programs may be reproduced or transmitted in any form or by any means, electronic or mechanical, for any purpose. If the Programs are delivered to the United States Government or anyone licensing or using the Programs on behalf of the United States Government, the following notice is applicable:

U.S. GOVERNMENT RIGHTS Programs, software, databases, and related documentation and technical data delivered to U.S. Government customers are "commercial computer software" or "commercial technical data" pursuant to the applicable Federal Acquisition Regulation and agency-specific supplemental regulations. As such, use, duplication, disclosure, modification, and adaptation of the Programs, including documentation and technical data, shall be subject to the licensing restrictions set forth in the applicable Oracle license agreement, and, to the extent applicable, the additional rights set forth in FAR 52.227-19, Commercial Computer Software-Restricted Rights (June 1987). Oracle Corporation, 500 Oracle Parkway, Redwood City, CA 94065.

The Programs are not intended for use in any nuclear, aviation, mass transit, medical, or other inherently dangerous applications. It shall be the licensee's responsibility to take all appropriate fail-safe, backup, redundancy, and other measures to ensure the safe use of such applications if the Programs are used for such purposes, and we disclaim liability for any damages caused by such use of the Programs.

The Programs may provide links to Web sites and access to content, products, and services from third parties. Oracle is not responsible for the availability of, or any content provided on, third-party Web sites. You bear all risks associated with the use of such content. If you choose to purchase any products or services from a third party, the relationship is directly between you and the third party. Oracle is not responsible for: (a) the quality of third-party products or services; or (b) fulfilling any of the terms of the agreement with the third party, including delivery of products or services and warranty obligations related to purchased products or services.

Oracle is not responsible for any loss or damage of any sort that you may incur from dealing with any third party. Oracle is a registered trademark of Oracle Corporation and/or its affiliates. Other names may be trademarks of their respective owners.

# CONTENTS

1	Preface .....	4
1.1	Audience .....	4
1.2	Documentation Accessibility .....	4
1.3	Accessibility of Code Examples in Documentation .....	4
1.4	Accessibility of Links to Extern Web Sites in Documentation.....	4
1.5	Deaf/Hard of Hearing Access to Oracle Support Services.....	4
1.6	Related Documents .....	5
2	Integration SDK Demo Home Page.....	5
3	Filesys Demo .....	6
3.1	Filesys Demo page .....	6
3.2	Viewing Documents .....	7
3.3	Creating Markups .....	9
3.4	Saving Markups .....	10
3.5	Displaying Existing Markups.....	11
3.6	Promoting Markups.....	11
3.7	Deleting Markups.....	12
3.8	Consolidating Markup Files .....	14
3.9	Printing Headers, Footers and Watermarks .....	16
3.10	DMS Properties .....	19
3.11	File Compare .....	19
3.12	Opening a file from a Backend DMS System .....	21
3.13	Searching for Files in a Backend DMS System.....	21
3.14	Add new data to the document repository.....	22
3.15	Intellistamp / Pick List .....	29
3.16	AutoVue Mobile & Markup Policy .....	34
3.17	Authentication & Login Dialog .....	39
3.18	Embedded vs. New Window.....	41
3.19	Pop-up Blocker .....	42
3.20	Image Preview .....	44
3.21	Prompt to Save Markup on Exit.....	44
4	Real-Time Collaboration Demo .....	45
4.1	Real-Time Collaboration Demo page .....	45
4.2	Start a Meeting .....	46
4.3	Join a Meeting .....	46
4.4	Conduct Meeting.....	47
4.5	Close Meeting.....	48
5	Oracle Enterprise Visualization Framework Demo.....	49
6	Feedback Section .....	50

# 1 Preface

The *AutoVue Integration SDK User Guide* explores ISDK's key capabilities.

For the most up-to-date version of this document, go to the AutoVue Documentation Web site on the Oracle Technology Network (OTN) at <http://www.oracle.com/technetwork/documentation/autovue-091442.html>.

## 1.1 Audience

This document is intended for Oracle partners and third-party developers (such as integrators) who want to implement their own integration with AutoVue.

## 1.2 Documentation Accessibility

Our goal is to make Oracle products, services, and supporting documentation accessible to all users, including users that are disabled. To that end, our documentation includes features that make information available to users of assistive technology. This documentation is available in HTML format on OTN, and contains markup to facilitate access by the disabled community. Accessibility standards will continue to evolve over time, and Oracle is actively engaged with other market-leading technology vendors to address technical obstacles so that our documentation can be accessible to all of our customers. For more information, visit the Oracle Accessibility Program Web site at <http://www.oracle.com/accessibility/>.

## 1.3 Accessibility of Code Examples in Documentation

Screen readers may not always correctly read the code examples in this document. The conventions for writing code require that closing braces should appear on an otherwise empty line; however, some screen readers may not always read a line of text that consists solely of a bracket or brace.

## 1.4 Accessibility of Links to Extern Web Sites in Documentation

This documentation may contain links to Web sites of other companies or organizations that Oracle does not own or control. Oracle neither evaluates nor makes any representations regarding the accessibility of these Web sites.

## 1.5 Deaf/Hard of Hearing Access to Oracle Support Services

To reach Oracle Support Services, use a telecommunications relay service (TRS) to call Oracle Support at 1.800.223.1711. An Oracle Support Services engineer will handle technical issues and provide customer support according to the Oracle service request process. Information about TRS is available at <http://www.fcc.gov/cgb/consumerfacts/trs.html>, and a list of phone numbers is available at <http://www.fcc.gov/cgb/dro/trsphonebk.html>.

## 1.6 Related Documents

For more information, see the following documents in the AutoVue Integration SDK library:

- *Overview*
- *Installation Guide*
- *Technical Guide*
- *Acknowledgments*
- *Javadocs*
- *Security and Authentication Guide*

## 2 Integration SDK Demo Home Page

Launch your Web browser and go to the Oracle AutoVue Integration SDK demo home page. For example: <http://<myserver>:8080/isdk/index.jsp>

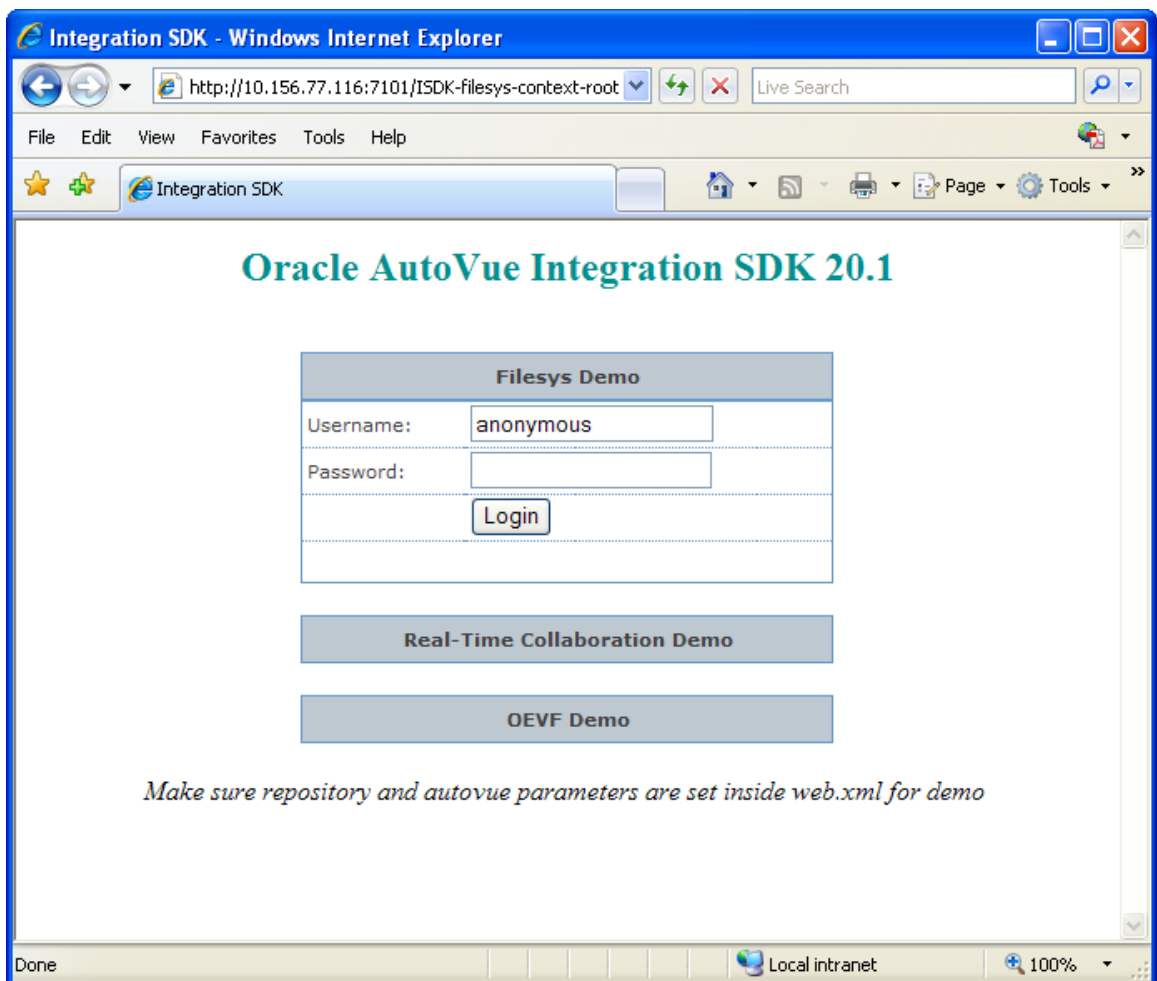


Figure 1.1 Integration SDK Demo Home Page

This page includes entrance points for three demos:

1. **Filesys Demo:** Enter username and password and then click **Login**. The Filesys Demo page loads. Note that the default username is **anonymous** with an empty password.

2. **Real-Time Collaboration Demo:** Click **Real-Time Collaboration Demo** to enter the AutoVue Real-Time collaboration demo page.
3. **Oracle Enterprise Visualization Framework Demo:** Click **OEVF Demo** to enter the Oracle Enterprise Visual Framework demo page.

### 3 Filesys Demo

#### 3.1 Filesys Demo page

From the Oracle AutoVue Integration SDK demo home page, click **Login** to launch Filesys Demo page.

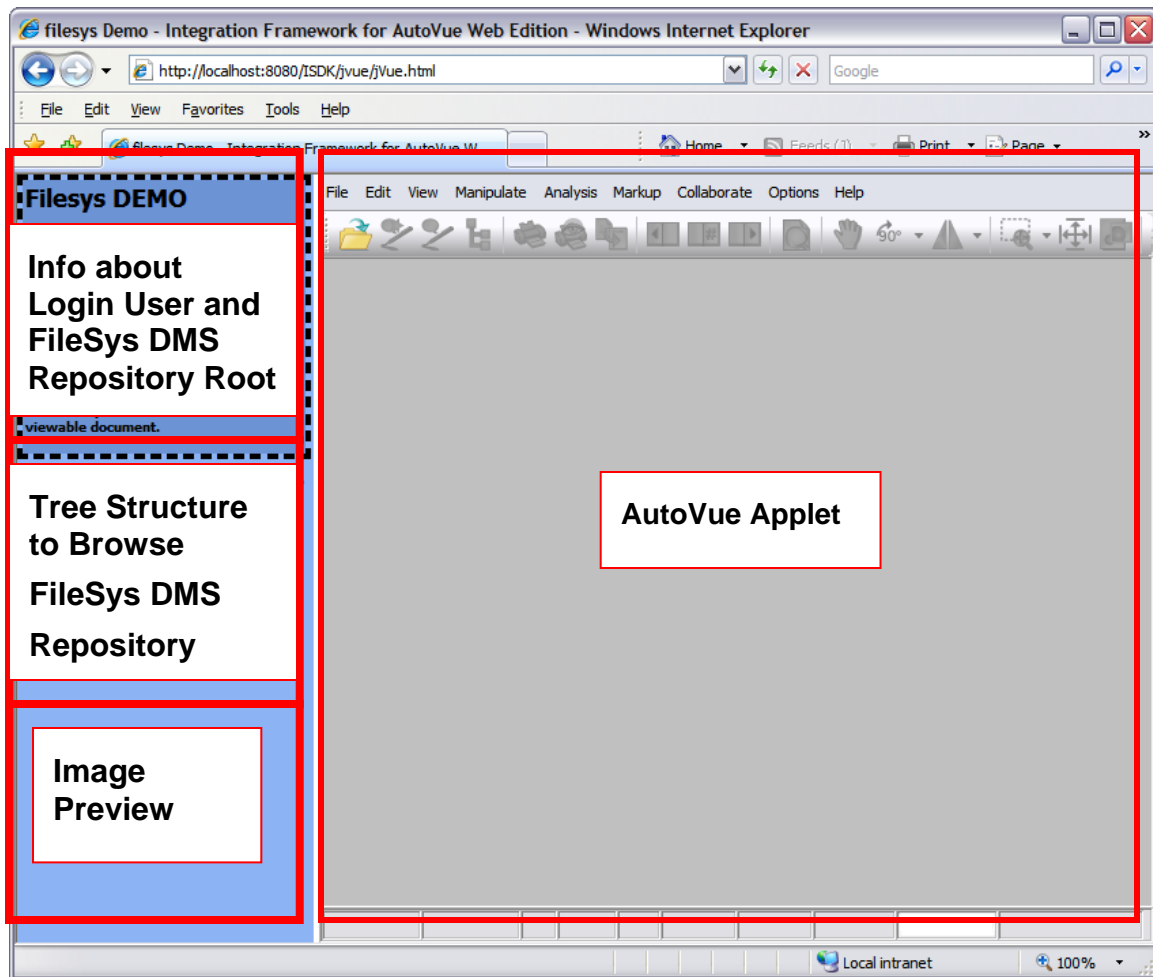


Figure 3.1 FileSys Demo Page

This Filesys Demo page contains four sections as shown in Figure 2.1:

- The top part of the left-side frame displays login information and Filesys DMS repository information (such as the location of the repository root folder and the repository base URL). If user information is unavailable, the **login** link is enabled. Otherwise, the username is displayed and the **logout** link is enabled.

- The middle part of left-side frame displays the structure of Filesys DMS repository. You can navigate the Filesys DMS repository by expanding folders and selecting documents to view.
- The bottom part of left-side frame displays the preview image for a viewable document when you navigate the Filesys repository and the preview image is available for that document. You can navigate the Filesys DMS repository by expanding folders and selecting documents to view.
- The right-side frame displays AutoVue applet. When a viewable document in the left-side frame is clicked, it displays in the right-side frame.

## 3.2 Viewing Documents

To view a single and composite document, navigate the Filesys DMS repository and click on the document you want to view. The viewable documents are tagged by the AutoVue icon.

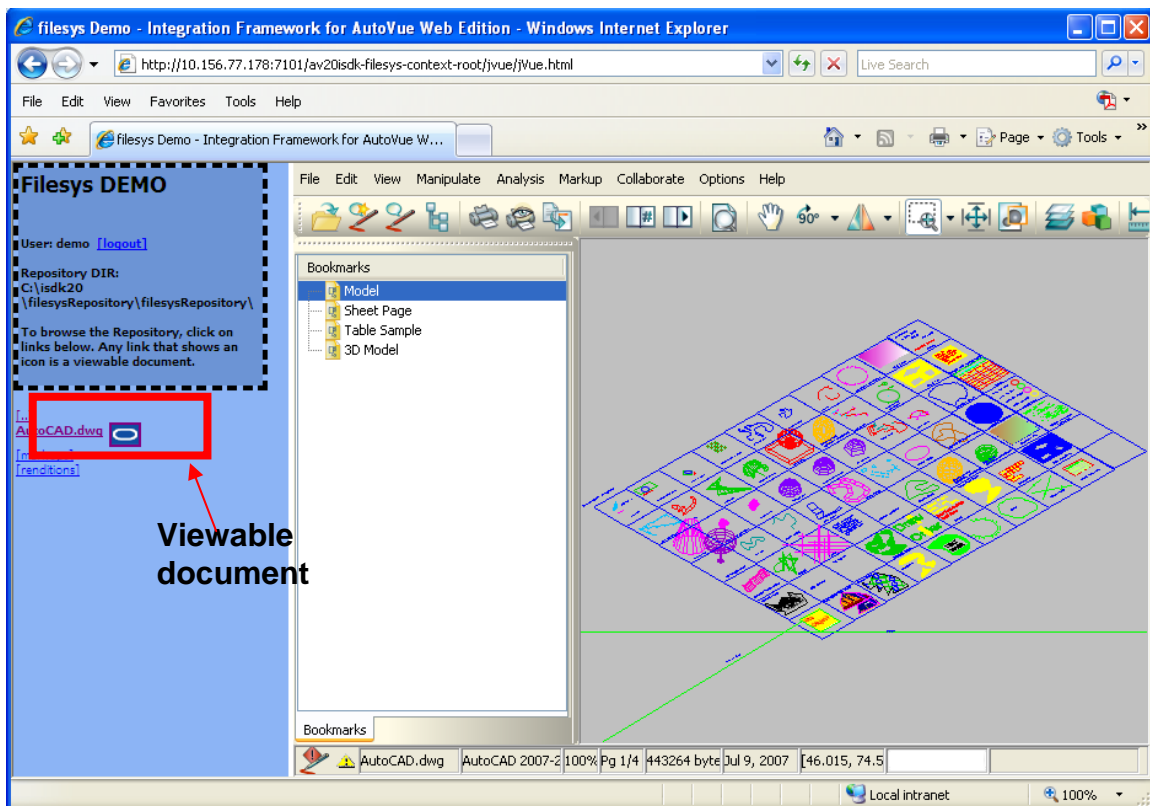


Figure 3.2 Filesys Demo - View a single document

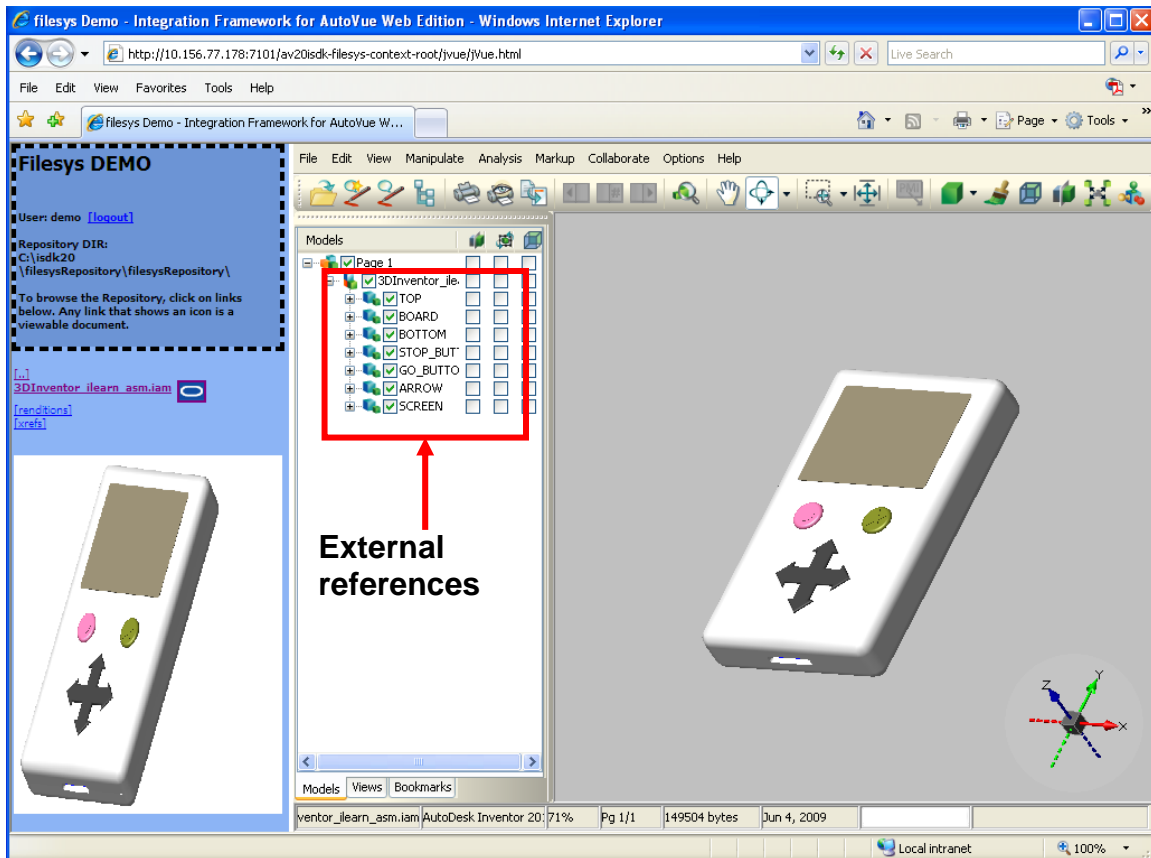


Figure 3.3 Filesys Demo - View a composite document with preview image

To view a specific version of a document, navigate the Filesys repository and select a document, expand it, select the target version folder and then click the base document.

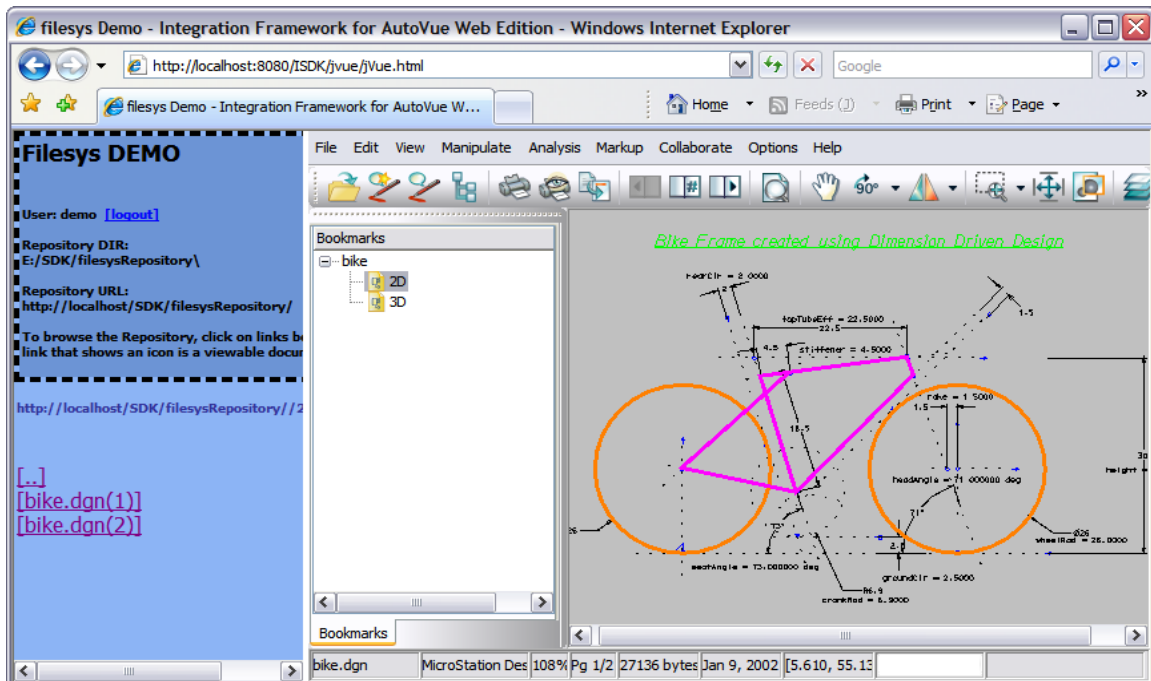


Figure 3.4 Filesys Demo - Two versions of the bike.dgn document



### 3.3 Creating Markups

View a document that you want to markup using AutoVue.

From the **Markup** menu, select **New**. AutoVue enters Markup mode and a new Markup file appears in the Markup Navigation Tree.

Note: From the Markup Properties toolbar, you can also click **New Markup** .

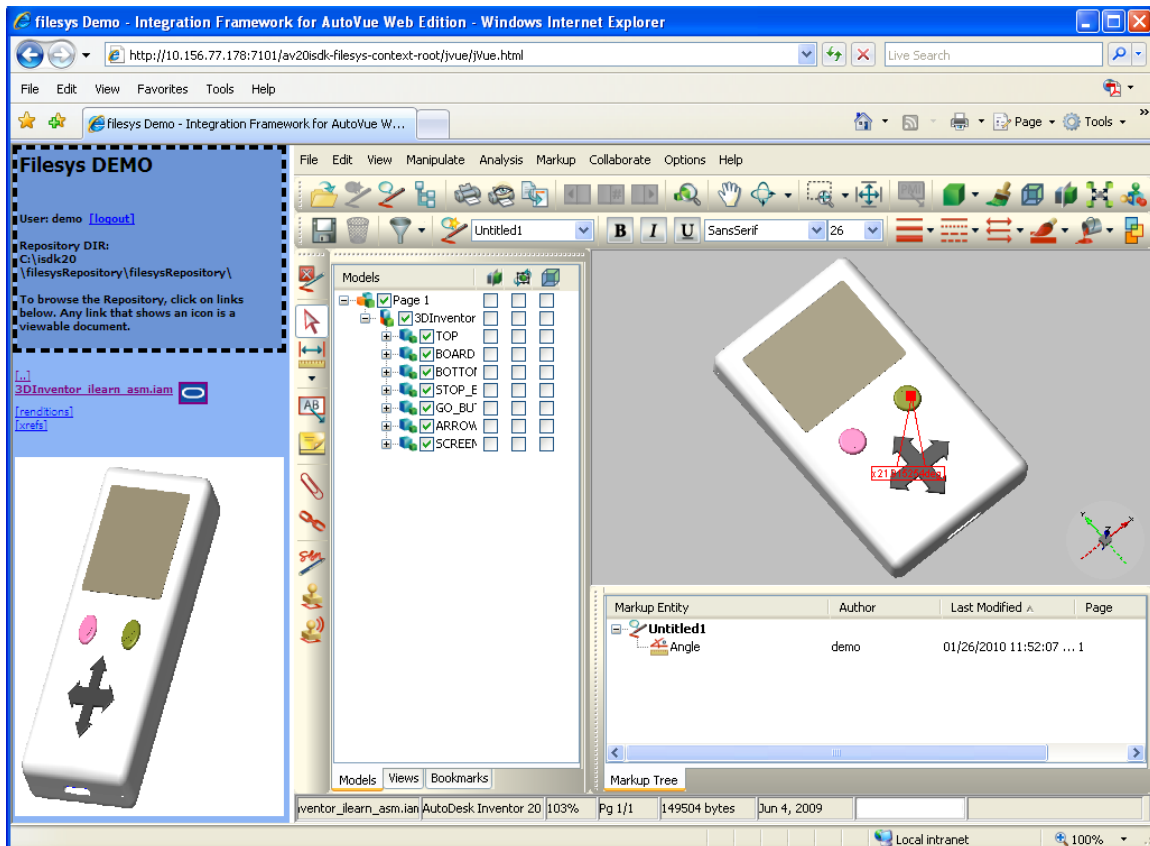


Figure 3.5 Filesys Demo - Create Markup in AutoVue

Note that if you have just finished creating a Markup file, and you would like to create a new markup file, from the **Markup** menu, select **New**.

Note: From the Markup Properties toolbar, you can also click **New Markup** .

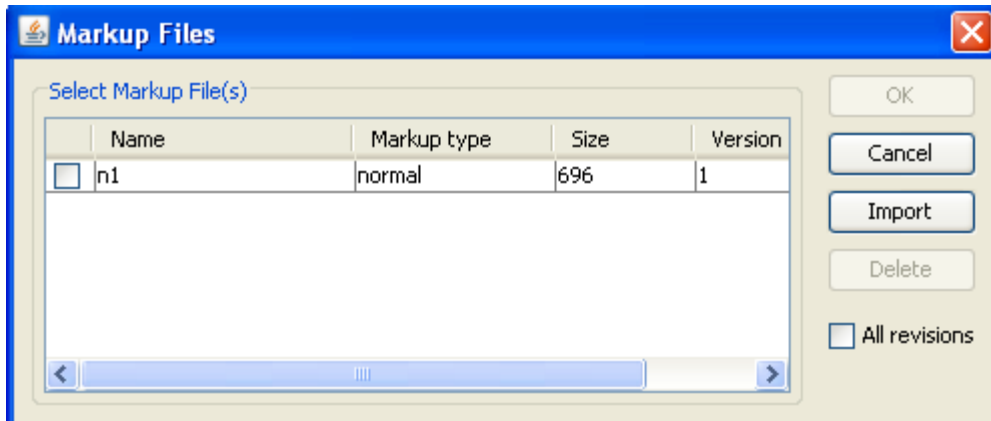


Figure 3.6: Open Markup Dialog

### 3.4 Saving Markups

To save a new markup file

1. Select **Save** from the **Markup** menu.  
The Save Markup File As dialog appears.

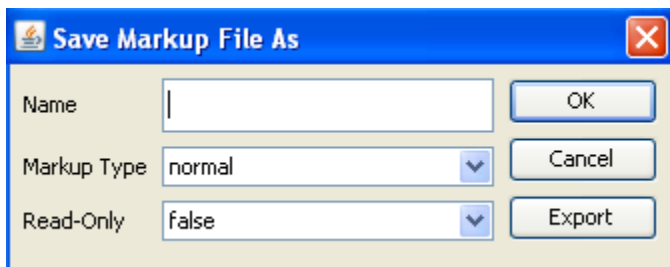


Figure 3.7: Saving Markup Dialog Box


2. Enter the **Name** for the Markup file
3. Select the **Markup Type**. There are three types: **normal** (default), **master** and **consolidated**.
4. From the **Read-Only** list, select **false** (default) or **true**.
5. Click **OK**.  
The markup file is saved and remains displayed in the AutoVue viewing window.

To save an existing markup file

1. Select **Save** from the **Markup** menu.  
The markup file is saved and remains displayed in the AutoVue viewing window.

### 3.5 Displaying Existing Markups

After the selected file displays in AutoVue.

1. View a file that has existing markups.
2. From the **Markup** menu select **Open**. You can also click on the Markup Indicator icon  in the status bar.  
The Markup Files dialog appears.

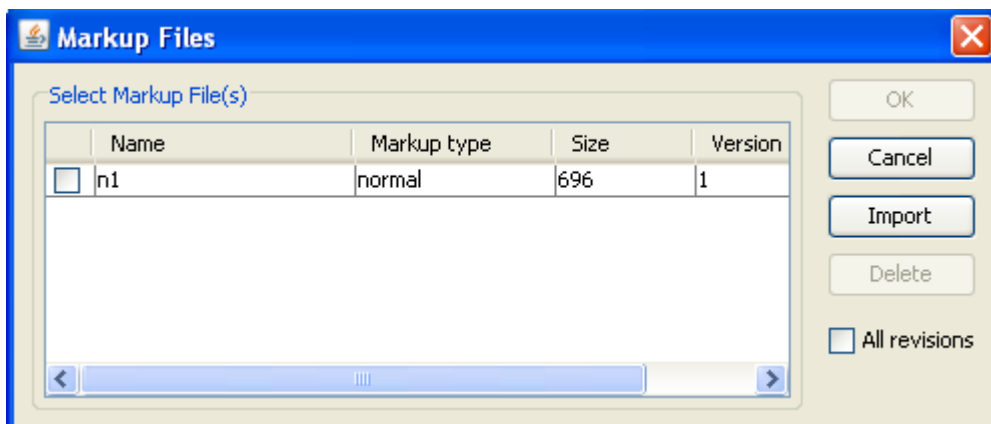



Figure 3.8: Open Markup Dialog Box

3. Select the markup file to view, and then select the active markup.
4. Click **OK**.

### 3.6 Promoting Markups

It is possible to promote markups from an earlier version of a document to the current version. When markups are promoted, they are saved against the new version of the document.

After displaying a file with AutoVue Server,

1. From the **Markup** menu select **Open**. You can also click on the Markup Indicator icon  in the status bar.  
The Markup Files dialog appears.

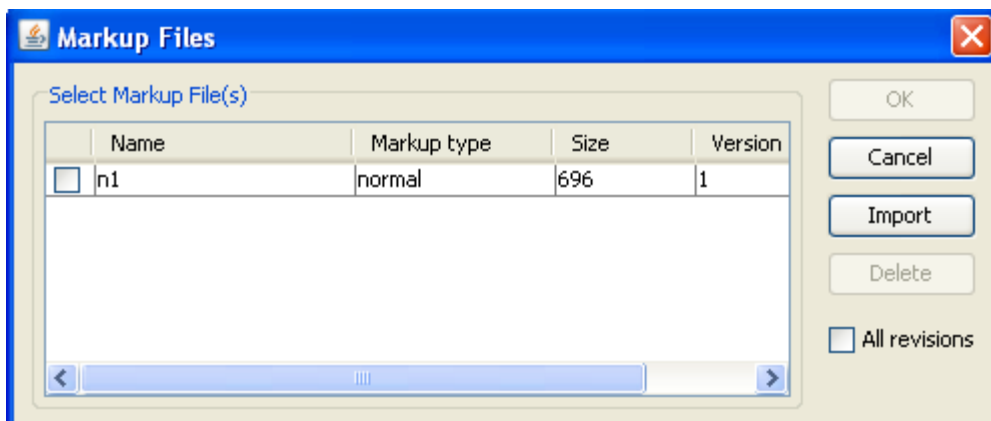


Figure 3.9: Markup files of current version base file are listed

- To display the markup files from previous versions of the base file, select the **All revisions** checkbox.  
The previous markup files are displayed for the previous version of the base file.

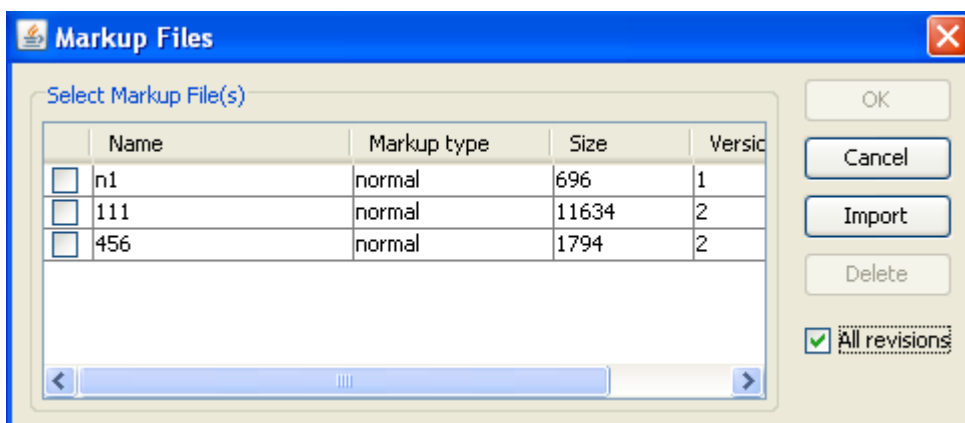



Figure 3.10: Markup files for previous version base file can be listed with All Revisions

- Select one Markup file from the previous version and then click OK.  
The Markup file displays with the current version base file in AutoVue. Additionally, when you save the selected markup (with or without any modification), it is saved as the markup of the current base file version.

### 3.7 Deleting Markups

After displaying a file with AutoVue.

- View a file that has existing markups.
- From the **Markup** menu select **Open**. You can also click the **Open Markup** icon  from the Toolbar.  
The Markup Files dialog appears.
- Select one or more markups from the list and then click **Delete**.

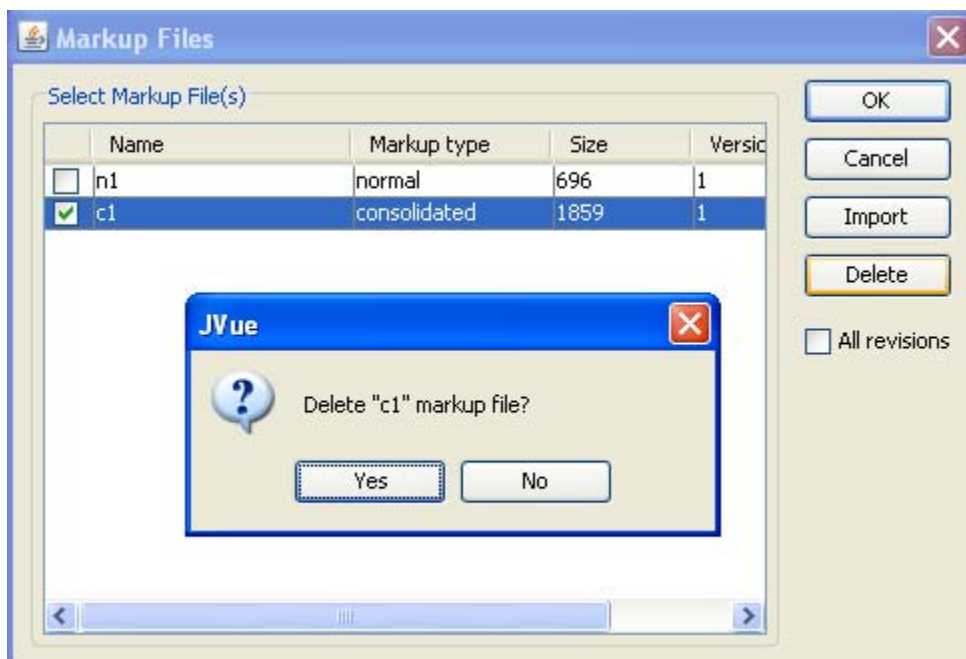


Figure 3.11: Delete button in Markup Files Dialog

A prompt appears to confirm the deletion of the selected markups.

4. Click **Yes** in the prompt.  
The selected markup file(s) are deleted from the list of markups in the 'Open markup' dialog box. The Markup Files dialog display the remaining markup files.

### 3.8 Consolidating Markup Files

The **Consolidate** option allows you to create a new Markup file that combines copies of selected layers of different markup files. During the review cycle, consolidation simplifies document revisions by providing the author with one combined Markup file instead of several Markup files. Note that the Consolidate option is only active when more than one Markup file is opened.

1. View a file with existing markups.
2. Open the Markup files that you want to consolidate.

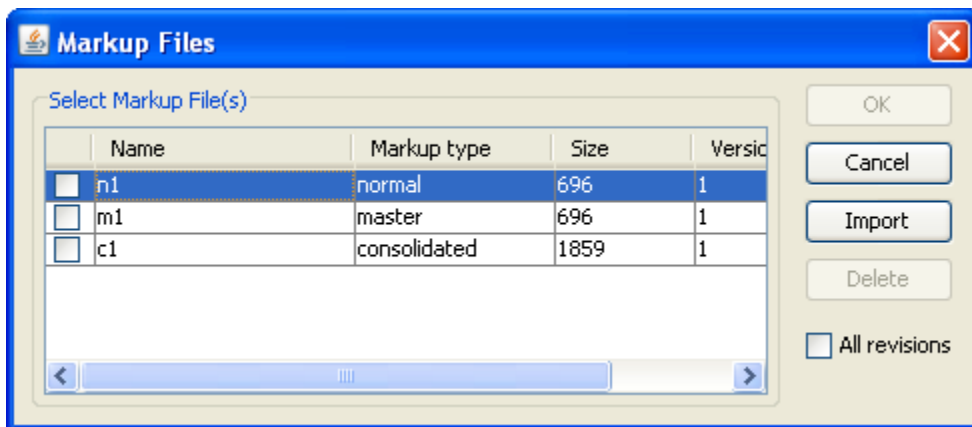


Figure 3.12: Markups Files Dialog

3. From the **Markup** menu, select **Consolidate**.

The Consolidate Markups dialog appears.

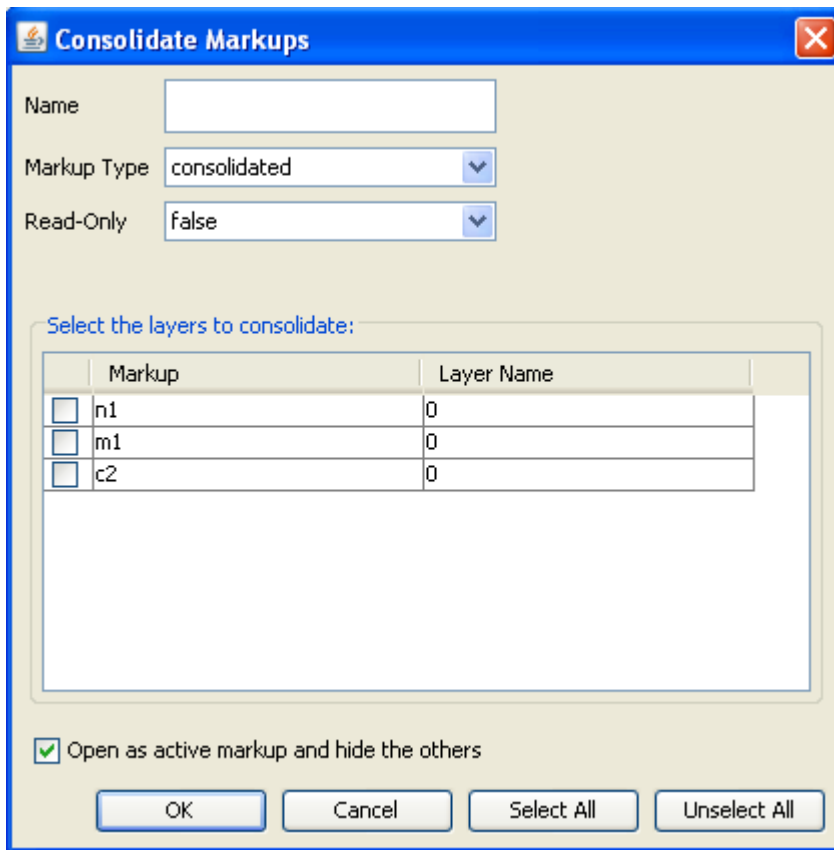


Figure 3.13: Consolidate Markups Dialog

4. Select the markup layers that you want to consolidate into one file. To select multiple layers, press the Shift or Control key while selecting.
5. To select all the layers click **Select All**, and to deselect all the layers click **UnSelect All**.
6. In the **Name** field, enter name for the new Markup file.
7. Click **OK**.

### 3.9 Printing Headers, Footers and Watermarks

With AutoVue, you can print document attributes in a header, footer or as a watermark.

Select **Print** from the AutoVue **File** menu.

The Print Properties dialog appears. Customize the **Print Properties** (see below).

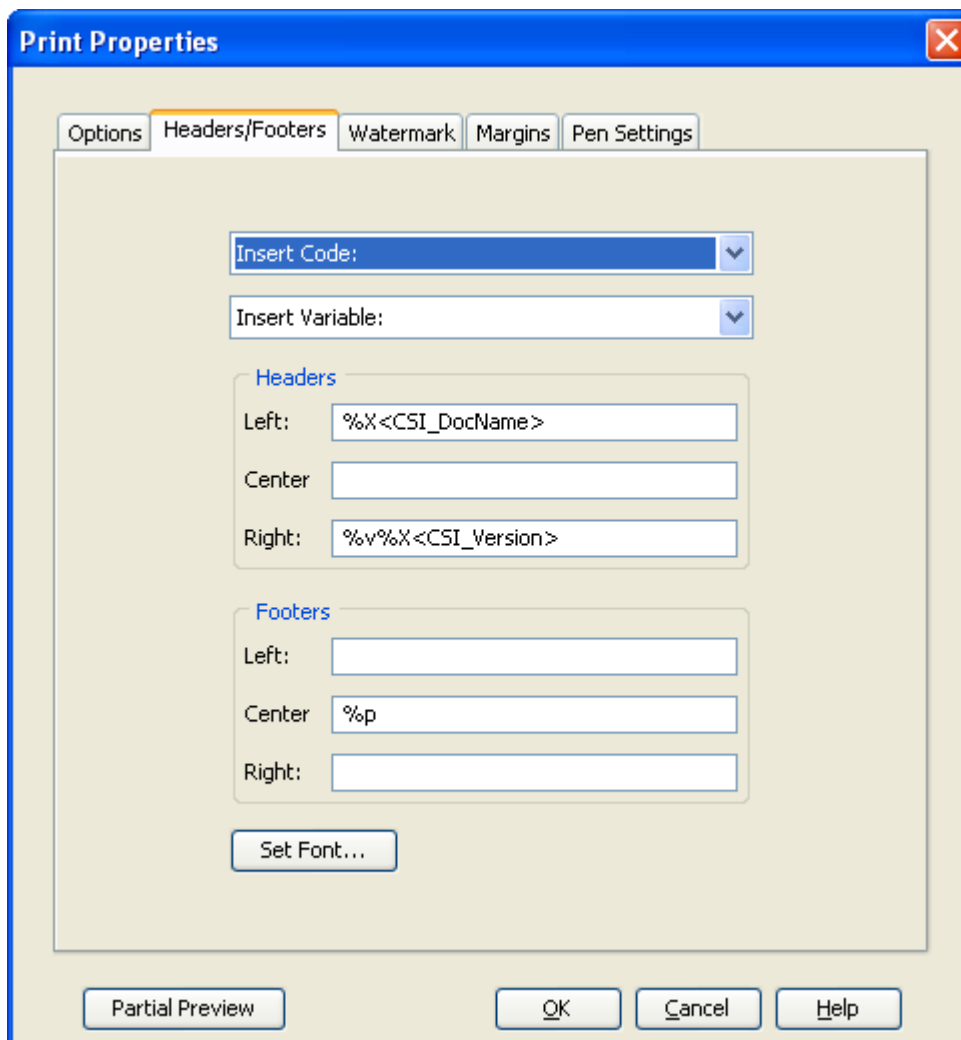


Figure 3.14: The print properties setting dialog

#### 3.9.1 Headers/Footers Group

From the Headers/Footers tab of the Print Properties dialog, you can define the headers and footers that you want to print on every page of the document. You can enter the text manually or choose from a list of Insert Codes. Select the **Headers/Footers** tab.

The insert codes are:

- %f: Full path of document
- %v: Document Drive
- %d: Document Directory



- %b: Document Base name
- %e: Document file extension
- %n: Total document pages
- %p: Current page number
- %N: Total tiled-pages
- %P: Current tile number
- %Y: Date: Year
- %M: Date: Month
- %D: Date: Day
- %W: Date: Day of week
- %H: Time: Hour
- %U: Time: Minute
- %S: Time: Seconds
- %r: New line
- %F: Native Print Settings (Excel)

### 3.9.2 Watermarks Group

From the **Watermark** tab of the Print Properties dialog, you can specify a watermark that will appear on a printed file. When printing a watermark, it appears transparent on the file contents. You can choose a horizontally or vertically oriented watermark.

In addition to entering text, you can:

- set the type, size and style of font
- insert Watermark information
- print system variables

To insert Watermark information, AutoVue provides a list of codes that you can choose from. These codes are:

- %f: Full path of document
- %v: Document Drive
- %d: Document Directory
- %b: Document Base name
- %e: Document file extension
- %n: Total document pages
- %p: Current page number
- %N: Total tiled-pages
- %P: Current tile number
- %Y: Date: Year

- %M: Date: Month
- %D: Date: Day
- %W: Date: Day of week
- %H: Time: Hour
- %U: Time: Minute
- %S: Time: Seconds
- %r: New line
- %F: Native Print Settings (Excel)

### 3.9.3 Conversion

Sometimes you need to convert a file to be able to use it with an application it was not created from. AutoVue provides several conversion file formats for you.

**Note:**

Currently, **PCRS\_TIF; PCRS\_GP4; PCRS\_EPS; PCRS\_PCL; PCRS\_PCX; PCVC\_PDF; PCRS\_RLC; PCRS\_BMP and CSI\_META** formats are supported by filesys.

After displaying a file with AutoVue select Convert from the File Menu. The Convert dialog appears. The converted file is checked into *Filesys* DMS repository.

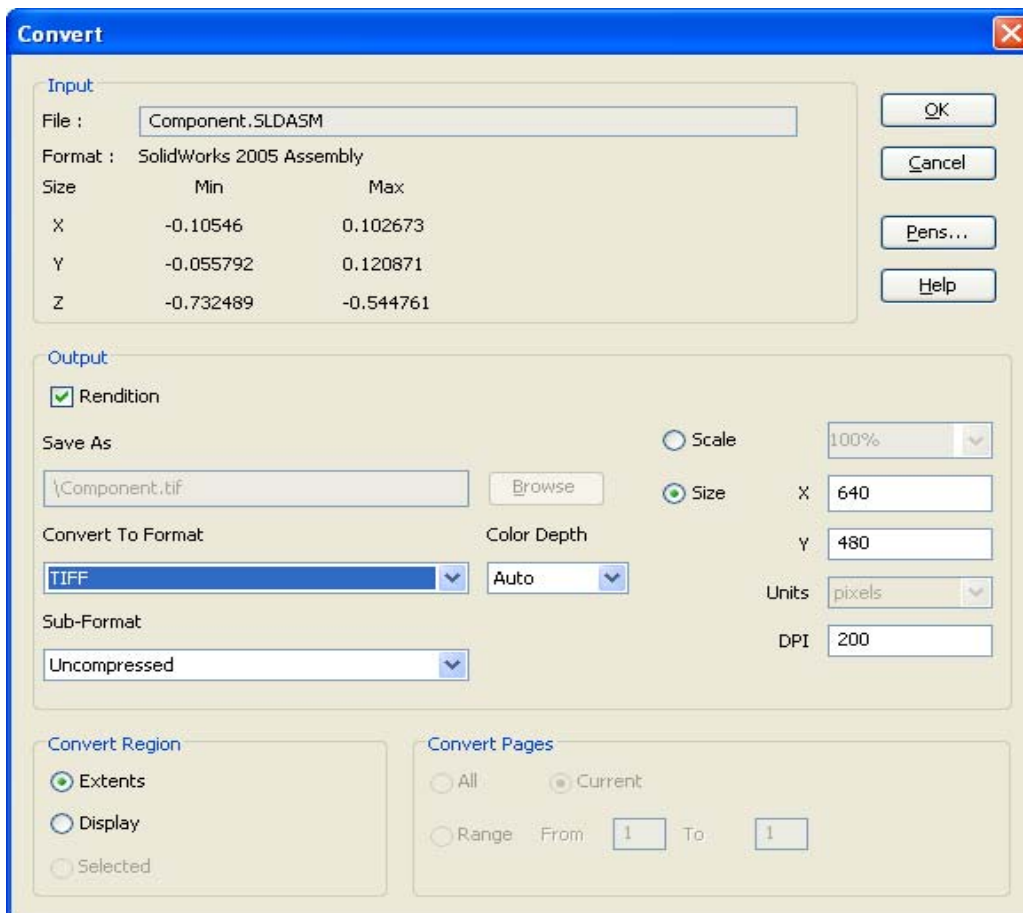


Figure 3.15: The print properties setting dialog

### 3.10 DMS Properties

With AutoVue it is possible to display the document's properties.

1. After displaying a file with AutoVue select Properties from the File menu.  
The Properties dialog appears.
2. Click on the DMS tab.  
Document properties are displayed (name, size, date of last modification, version number, number of versions of this document and author).

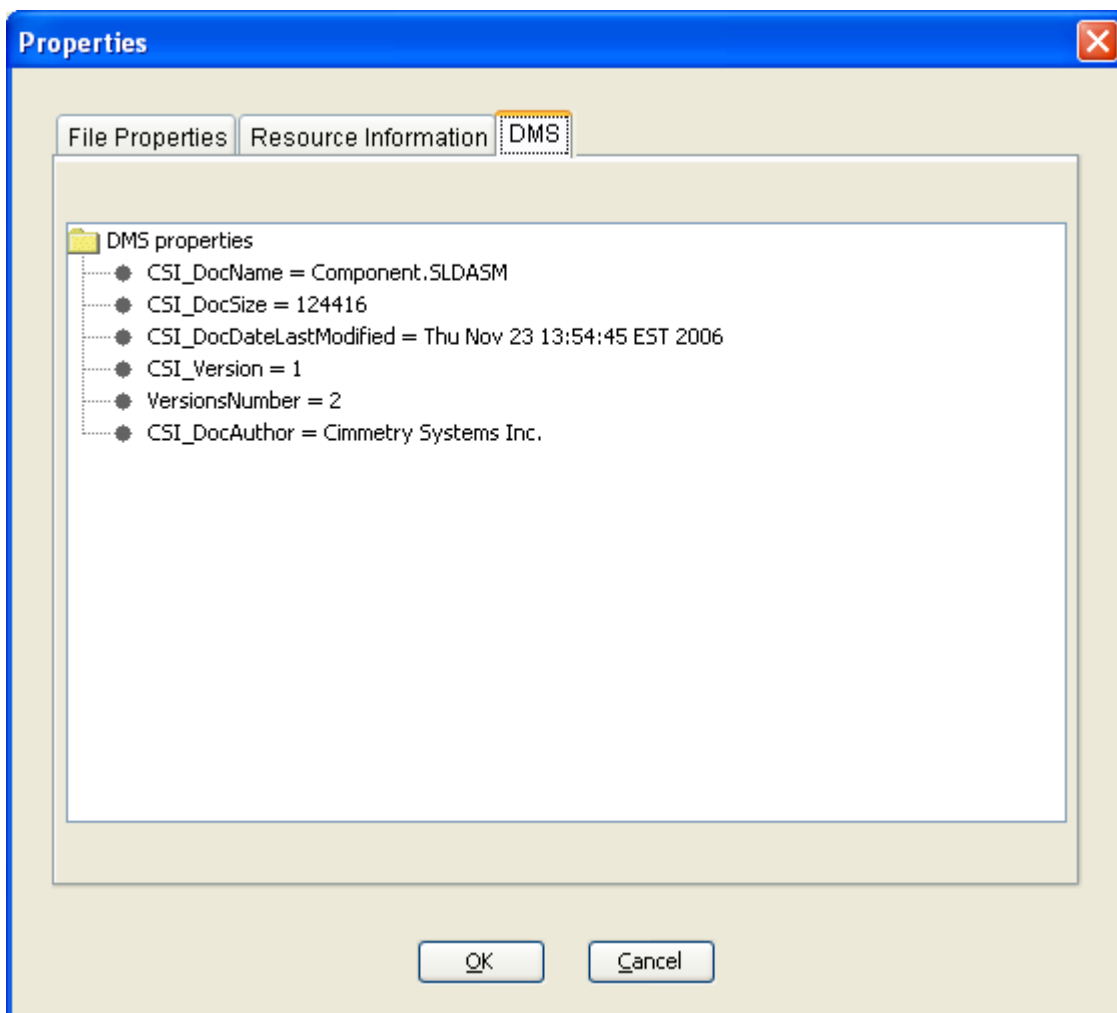


Figure 3.16: The DMS properties

### 3.11 File Compare

With AutoVue it is possible to compare the current version of a document with any of its past versions.

1. Open a file in AutoVue.
2. Select **Compare** from the **Analysis** menu.  
The File Open dialog appears.

3. Select a version from **Document Versions** drop down list.

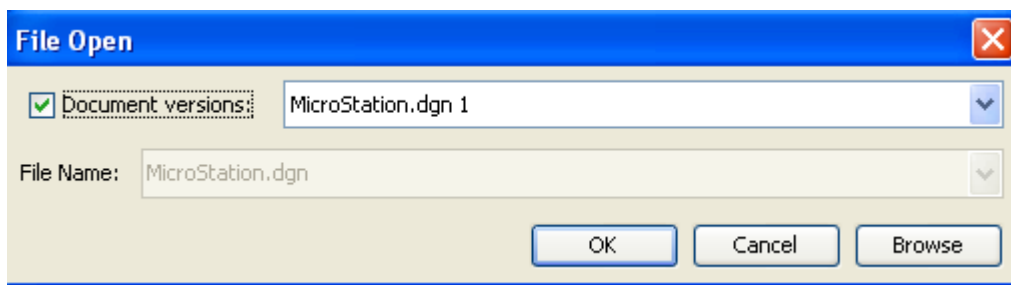


Figure 3.17: File Compare in dialog box

AutoVue displays three windows, the first displaying the original file, the second displaying the compare file and the third displaying the comparison results. Additions appear in green, deletions in red and unchanged in blue.

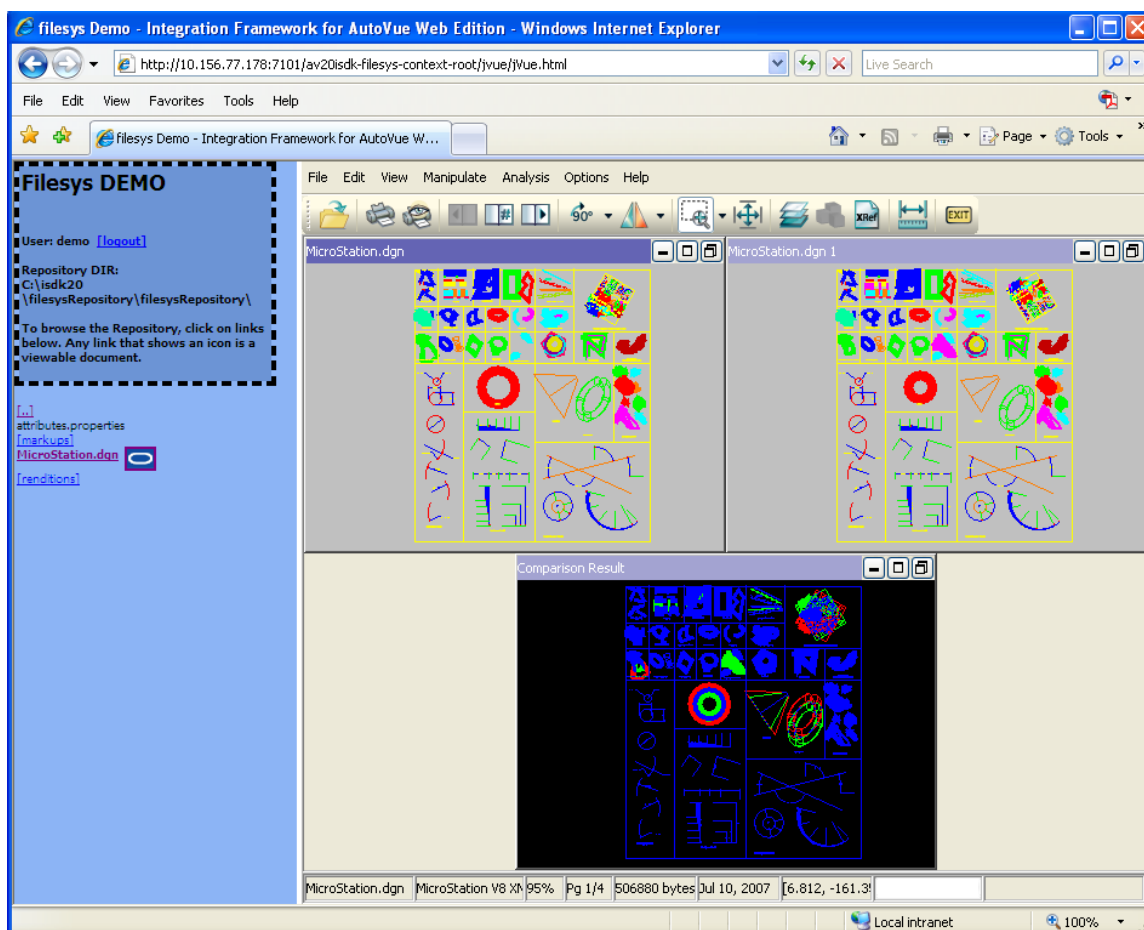


Figure 3.18: File Compare in AutoVue applet

### 3.12 Opening a file from a Backend DMS System

When AutoVue is connected to a backend Filesys Document Management System (DMS) system, you can open a file located in the system from the File Open dialog. Depending on the backend DMS system you are connected to, you must enter your username and password when opening files stored in the backend system.

1. View a file in AutoVue.
4. From the **File** menu select **Open**.  
The File Open dialog box appears.
5. To open a file from the backend DMS system, from the left panel, click **DMS**.

**Note:** If AutoVue is configured with one DMS system, the name of the DMS would appear instead of DMS. If AutoVue is connected to multiple backend DMS systems, a list of the DMS system names appear when you click DMS. Select the DMS from which you want to open files.

The backend DMS system files appear in the File Open dialog.

6. Select a file and then click **Open**.

### 3.13 Searching for Files in a Backend DMS System

When AutoVue is connected to backend DMS system, you can search for files in the system by entering specific search criteria in the File Open dialog.

1. View a file in AutoVue.
2. From the **File** menu select **Open**.  
The File Open dialog box appears.
3. To search for a file in the backend DMS system, from the left panel, click **Search DMS**.

**Note:** If AutoVue is configured with a single DMS, the name of the DMS appears instead of DMS. If AutoVue is connected to multiple backend DMS systems, a list of the DMS system names appear when you click Search DMS. Select the DMS in which you want to perform the search.

The search criteria options load in the File Open dialog.

4. Enter the search criteria and then click Search.

**Note:** Alternately, to view all files in the backend DMS system, leave the search criteria fields empty and click Search.

The file results appear in the dialog. For each AutoVue session, all search results are saved and can be referenced from the File Open dialog as Search Results 1, Search Results 2, and so on.

5. Select a file and then click Open.

### 3.14 Add new data to the document repository

With Filesys DMS application you can add new data to the document repository by manually creating the data structure or by using a utility class

`com.cimmetry.vuelink.filesys.dms.util.FilesysDataStructureCreator` coming with filesys.

#### 3.14.1 Create data structure manually

To add a new document into the repository, such as “my.dwg”, follow these steps:

1. Browse to the <filesys data repository unzipped folder>/filesysRepository folder.
2. You can create a new folder in parallel to “2D”, “3D” and “Meeting” folder or create a new folder inside “2D” or “3D” folder. Suppose you want to add the file inside “2D” folder. You can name the folder using the file’s name that you want to view, that is, “my.dwg”. This is the convention for sample data.
3. Under this folder, create a new folder for the first revision of the file. Name it “my.dwg(1)” and put the file “my.dwg” inside the folder.
4. If you have another revision for “my.dwg” file, then you can create “my.dwg(2)” folder under “my.dwg” folder and put the second revision of the file inside.
5. If the file “my.dwg” has XRefs, then create an “xrefs” folder under the base file’s folder “my.dwg(1)” and put all the XRefs files there.

#### 3.14.2 Add data from IDE

To add the new data to your document repository, you must execute the `main()` method of `com.cimmetry.vuelink.filesys.dms.util.FilesysDataStructureCreator` class.

```
public static void main(String[] args) {
    BasicConfigurator.configure();
    //String[] params = {"-url", "C:/temp/filesysRepository/ECAD", "-b", "C:/program
files/jVue/html/samples/ECAD/PAD//PADS_ILEARN.pcb"};
    //params = {"-url", "C:/temp/filesysRepository/2D", "-b", "C:/program
files/jVue/html/samples/2D/MicroStation.dgn" -v 3};
    FilesysDataStructureInfos data = new FilesysDataStructureInfos();
    try{
        data.constructStructure(args);
        FilesysDataStructureCreator struct = new FilesysDataStructureCreator(data);
        struct.createStructure();
    }catch(FileNotFoundException fex){
        m_logger.error(fex);
        System.exit(0);
    }catch(Exception ex){
        m_logger.error(ex);
        System.exit(0);
    }
```

As shown the figure above, you need to pass in arguments for the `main()` method. These arguments indicate types, versions and locations of the files to add in the repository. You can add several types of documents to the repository such as: base documents, XRefs, markups and conversions files. We use options **<-option>** to indicate the document type. Here is the complete list the options:

- url: location of filesys repository
- b: base file
- v: version number

- x: xrefs files
- m: master markups files
- n: normal markups files
- c: consolidated markups files
- tiff: TIFF conversion file
- pdf: PDF conversion file
- meta: metaFile.

For the first sample argument in the figure above, the url is `c:\temp\filesysRepository\ECAD` (You don't have to specify the exact destination location of a file, you have just to specify the repository location) and the base file is `PADS_ILEARN.pcb` and is located in `C:\program files\jVue\html\samples\ECAD\PAD` folder.

For the second sample argument, the url is `c:\temp\filesysRepository\2D` and the base file is `MicroStation.dgn` and is located in `C:\program files\jVue\html\samples\2D` folder. The version number is 3.

### Add data from JDeveloper

On JDeveloper IDE, to run the `FilesysDataStructureCreator` class, you need to complete the following steps:

1. Select the **filesys** project
2. From the **Run** menu, select **Choose Active Run Configuration**, and then select **Manage Run Configurations...**

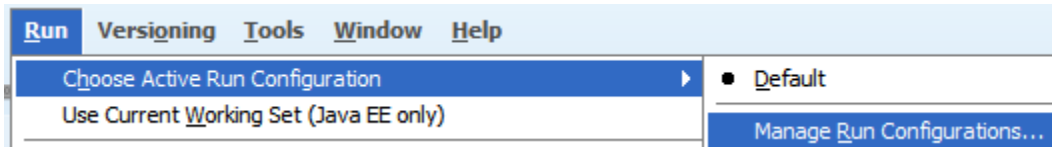


Figure 3.19: JDeveloper Manage Run Configurations

3. Click **New...** at the right side of the Project Properties windows, name it **addData** and then click **OK**. `addData` appears under the Run Configurations.

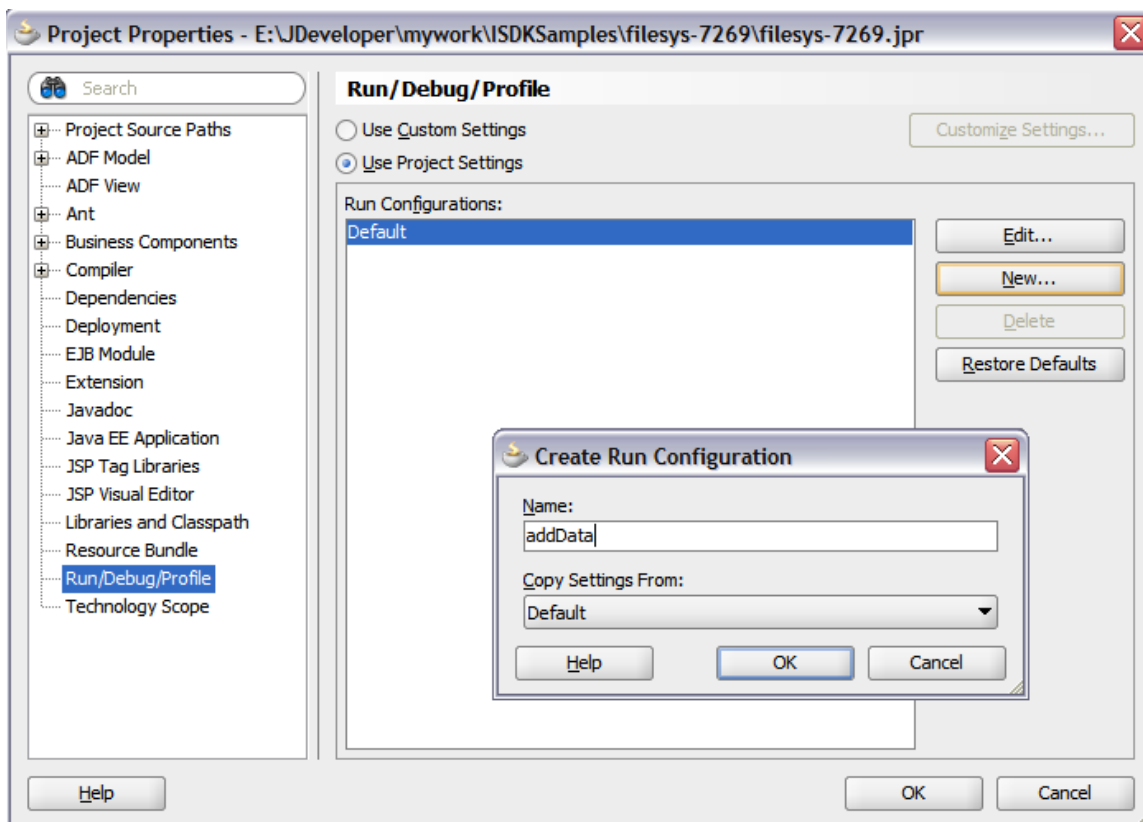


Figure 3.20: JDeveloper create addData run configuration 1

4. Select **addData** and click **Edit**.
5. Browse to set the Default Run Target to be `com.cimmetry.vuelink.filesys.dms.util.FilesysDataStructureCreator` and input Program Arguments. Click OK and OK again to exit. Two sample program arguments are
 

```
-url C:/temp/filesysRepository/EDA -b "C:/Program
Files/jVue/html/samples/EDA//PADS/PADS_ILEARN.pcb"
and
-url C:/temp/filesysRepository/2D -b "C:/Program
Files/jVue/html/samples/2D/MicroStation.dgn" -v 3
```



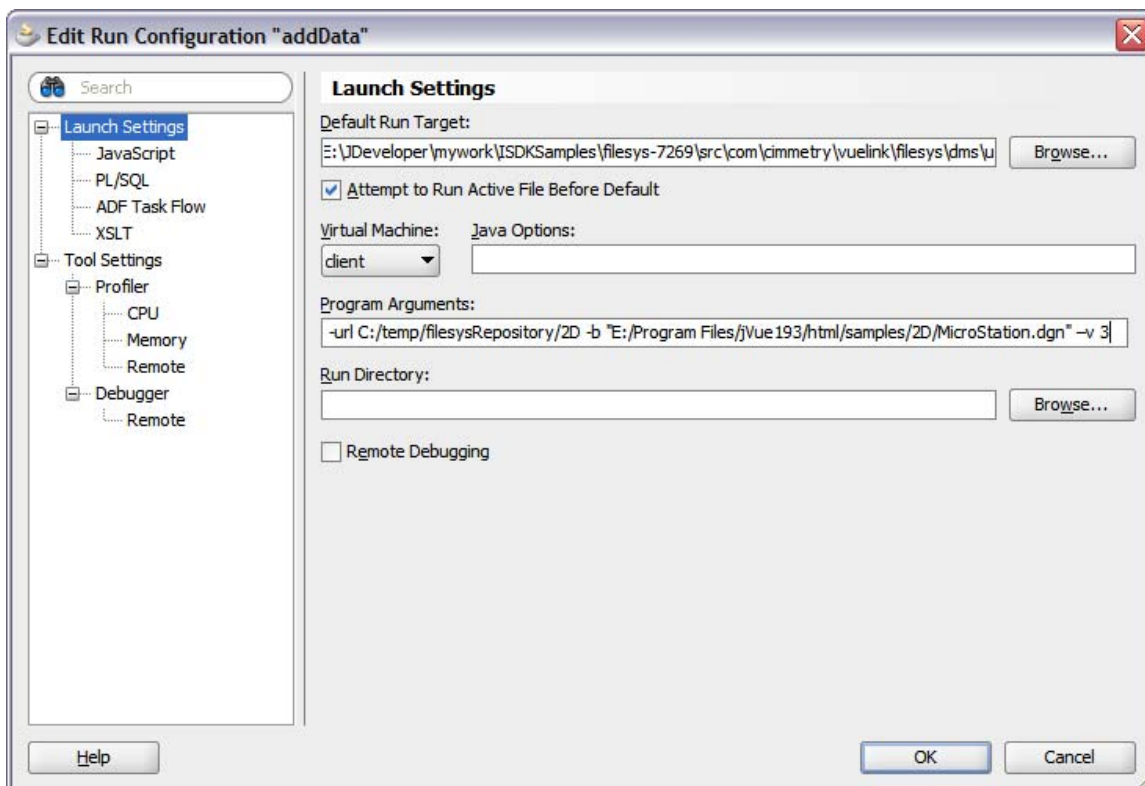


Figure 3.21: JDeveloper create addData run configuration 2

6. Run addData to create new file structure in the filesys repository.

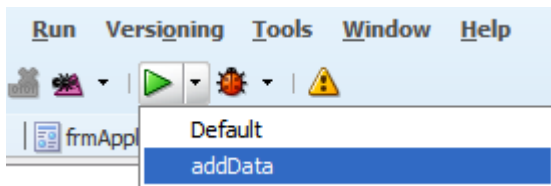


Figure 2.21 JDeveloper run addData

### Add data from Eclipse

On Eclipse IDE, to run the `FilesysDataStructureCreator` class, you need to complete the following steps:

1. Select the **filesys** project.
2. From the **RUN** menu click on the **RUN...** artifact.
3. Select the **Java Application** item.
4. Right click and select **New** from the context menu.
5. Enter **addData** in the Name field.
6. Search the class to execute (the class must have `public static main` method)  
`com.cimmetry.vuelink.filesys.dms.util.FilesysDataStructureCreator`

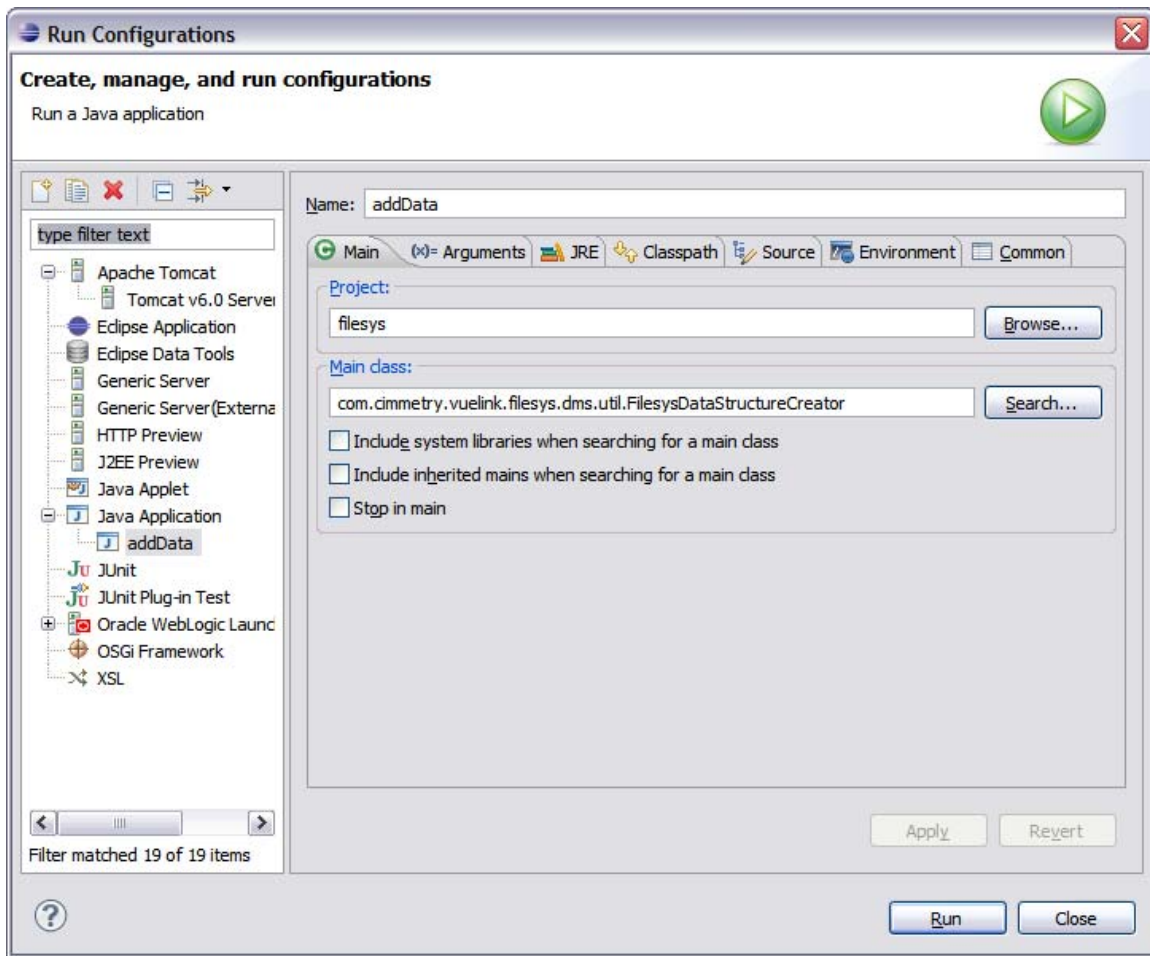


Figure 3.22 Eclipse create addData run configuration 1

7. Click the Arguments tab. You can add **Program Arguments** to create a file. Two sample arguments are:  
     `-url C:/temp/filesysRepository/EDA -b "C:/Program Files/jVue/html/samples/EDA//PADS/PADS_ILEARN.pcb"`  
     and  
     `-url C:/temp/filesysRepository/2D -b "C:/Program Files/jVue/html/samples/2D/MicroStation.dgn" -v 3`

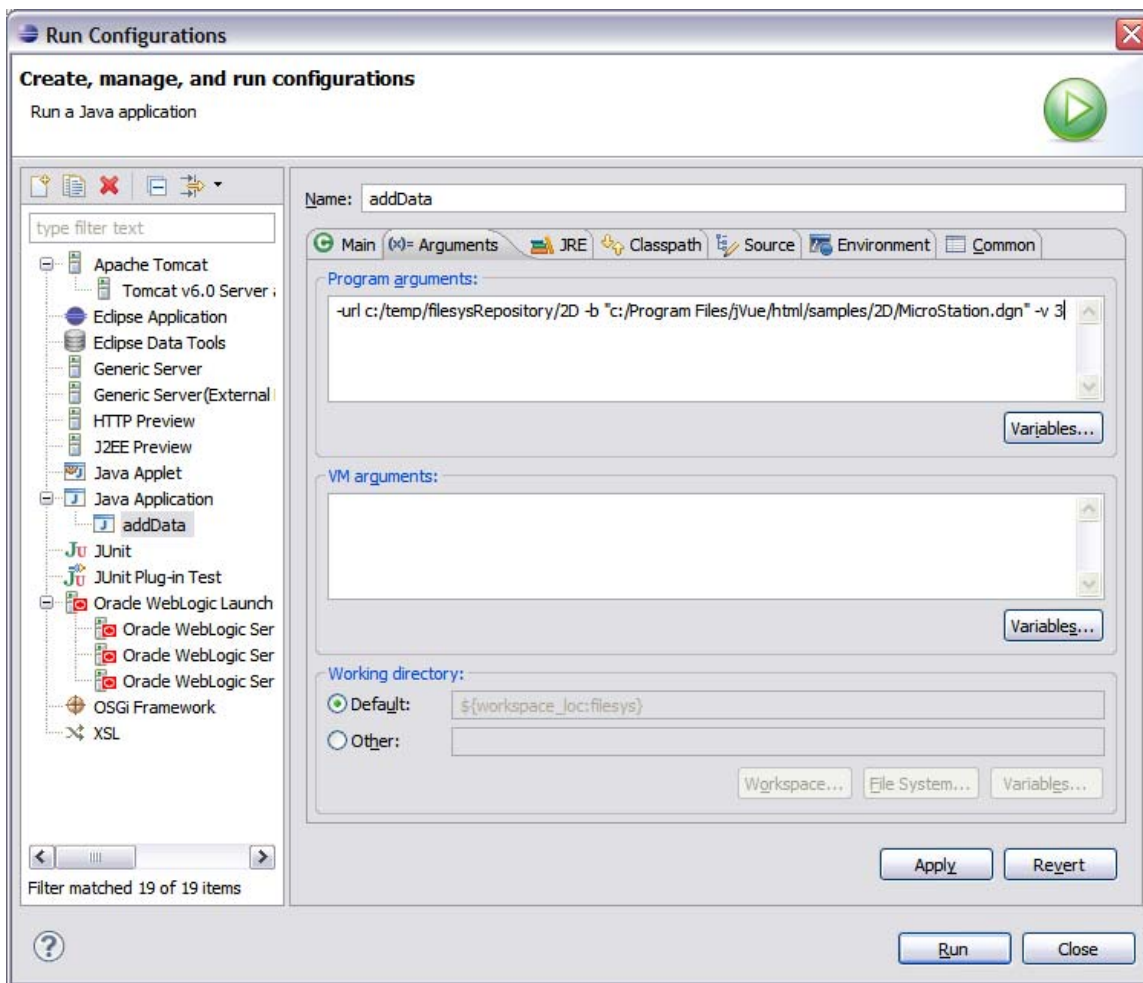


Figure 23 Eclipse create addData run configuration 2

8. You can click **RUN** directly from the above to create new file structure in the filesys repository or you can click **Apply** and **Close**, then click on addData artifact from the **RUN** icon.

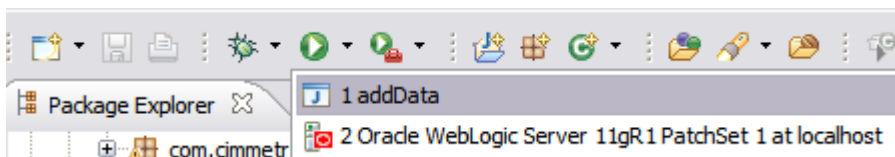


Figure 34 Eclipse run addData

If you provide the first sample argument when running the addData, from your filesys demo application, you can navigate to check the following new repository structure under the EDA folder.



Figure 3.25: Repository structure for PADS\_ILEARN.pcb

If you provide the second sample argument when running the addData, from your filesystem demo application, you can navigate to check the following new repository structure.



Figure 3.26 Repository Structure for the third version of MicroStation.dgn

## 3.15 Intellistamp / Pick List

### 3.15.1 Designing an Intellistamp

To design an Intellistamp you must use the Design Stamp tool that is included with the AutoVue installation. To launch the tool, go to the **<AutoVue installation>\bin** folder and double-click **stampdlg.exe**. The Design Stamp dialog appears.

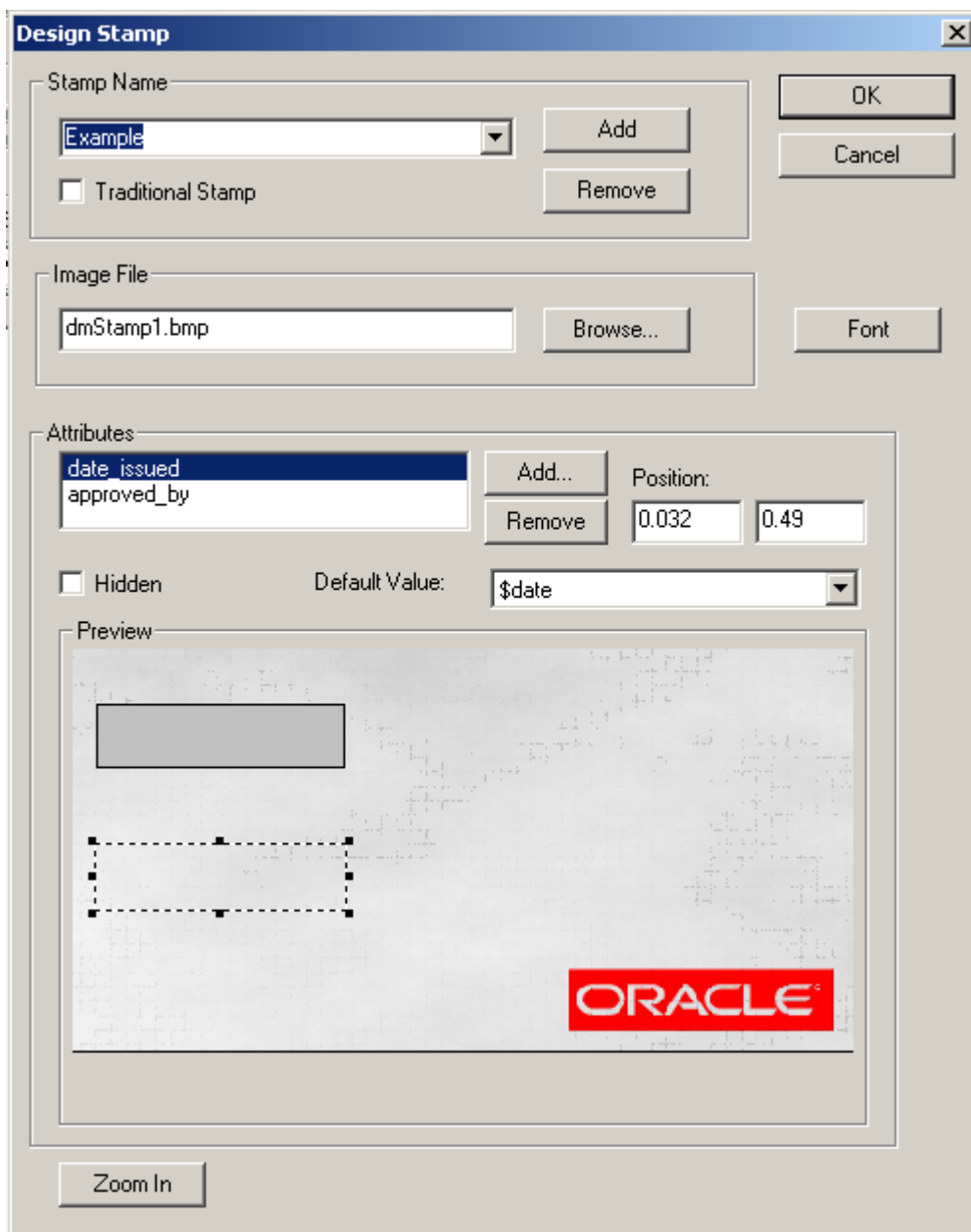


Figure 3.27: Design Stamp tool

The following sections describe how to design an Intellistamp with the Design Stamp tool.

1. From the Stamp Name section, click **Add**.  
The Add New Stamp dialog appears.
2. Enter a name for the Intellistamp and then click **OK**.  
The Open dialog appears.
3. Select a background image for the Intellistamp and then click **Open**.  
The selected image appears in the Preview window of the Design Stamp dialog. The Image File field displays the image file path.  
**Note:** To change the background image once the Intellistamp is created, click **Browse**, and then select a new background.
4. To set the selected Intellistamp as read-only, select the **Traditional Stamp** check box.  
**Note:** To remove an Intellistamp, from the Stamp Name box, select an Intellistamp and then click **Remove**.
5. To add an attribute, click **Add**.  
The Add New Attribute dialog box appears.
6. In the **Name** field, enter an attribute name that is defined in the backend system.
7. From the **Default Value** box, select one of the following values:
  - **<Not Defined>**: The attribute retains the same value as defined in the backend system.
  - **\$user**: For *AutoVue Desktop Version*, the operating system user name is assigned to the attribute. For *AutoVue*, the user session name is assigned to the attribute.
  - **\$date**: The current date and time is assigned to the attribute.
8. To prevent users from modifying the attribute, select the Read Only check box.
9. To hide the attribute from appearing on the Intellistamp, select the Hidden check box.  
However, the attributes are viewable from the DMS Attributes dialog.
10. When you are done adding an attribute, click Add.

The Add New Attribute dialog closes and the new attribute is added to Attributes box. The attribute displays as a resizable box in the Preview window.

### 3.15.2 Modifying Intellistamp Attributes

1. To change the value of an existing attribute, from the Attributes list, select the attribute and then select a new value from the **Default Value** box.
2. To remove an attribute, from the Attributes list, select the attribute and then click **Remove**.
3. To change the position of the attribute box in the preview window, you can enter either click and drag the box or enter the (X,Y) coordinates in the **Position** fields.  
**Note:** The Position fields take values between 0 and 1, where (0,0) is the default setting.
4. To enlarge the preview, click **Zoom In**.  
The Zoom In dialog appears. This dialog provides an enlarged version of the options available in the Design Stamp dialog box.
  - a. To close the Zoom In dialog, click **Zoom Out**.
5. To hide an attribute, select an attribute from the Attributes box, and then select the Hidden check box. The hidden attributes will not appear on the Intellistamp, however they are viewable from the DMS Attributes dialog.
6. To change the font of the attributes, click **Font**.

The Font dialog appears.

- a. Select the font, font style, and font size.
- b. From the Script box, you can select Western script or Hebrew script.  
The font previews in the Sample window.
- c. Click **OK** to implement the font changes.

Repeat to add multiple Intellistamps.

To view the available Intellistamps, select an Intellistamp from the Stamp Name box; the Intellistamp previews in the Preview window.

### 3.15.3 Adding an Intellistamp

1. View a file and enter Markup mode.
2. From the **Markup** menu, select **Add Entity**, and then select **Intellistamp**.

**Note:** From the Markup Entity toolbar, you can also click **Intellistamp** .

3. In the workspace, click and drag a box to the desired Intellistamp size.  
The Intellistamp dialog appears.

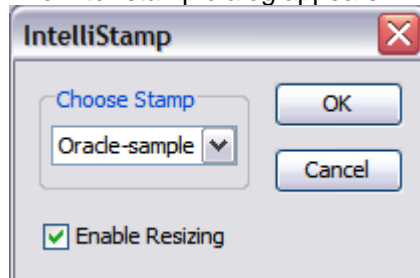


Figure 3.28: Intellistamp dialog

4. From the Choose Stamp box, select the desired Intellistamp.  
**Note:** To resize the Intellistamp, select **Enable Resizing**.
5. Click **OK**.  
The Intellistamp dialog closes and the Intellistamp appears in workspace and in the Markup Entity Tree.
6. Right-click the workspace to complete the Intellistamp placement.

### 3.15.4 Viewing/Modifying Intellistamp Attributes

1. Double-click the Intellistamp markup entity.  
The DMS Attributes dialog appears and lists all attributes of the Intellistamp.

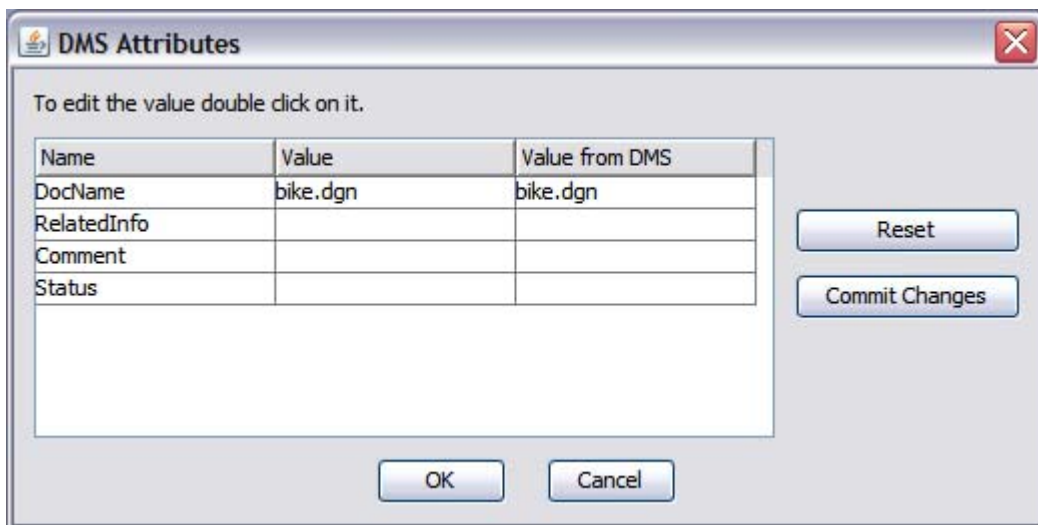


Figure 3.29: DMS Attributes dialog

**Note:** All attributes tagged hidden will also display in the Attributes dialog box. The dialog box contains three columns that include attribute values defined in the design stage:

- The **Name** column displays the attribute name as defined in the design stage.
  - The **Value** column displays the assigned value. If the attribute is not marked as **read-only** in the design stage, you can modify the value. If the attribute has a pick list, you can select one or more values from the list as explained in the following section.
  - The **Value from DMS** column displays the value assigned from the backend Filesys system.
2. Click the **Commit Changes** button to upload the changes made to the DMS Attributes dialog to the backend Filesys system or to the Mobile Pack if the Intellistamp markup entity is viewing from a Mobile Pack.
  3. Click **Reset** to retrieve the attribute values defined in the backend Filesys system or in the Mobile Pack if the Intellistamp markup entity is being viewed from a Mobile Pack.
  4. Click **OK** to finalize your changes and to close the DMS Attributes dialog box.

### 3.15.5 Pick List

#### 1. Single-Valued Pick List

Click on the **Value** field of a DMS attribute that has a single-valued pick list, a drop down list will appear and you can select a value from the list.



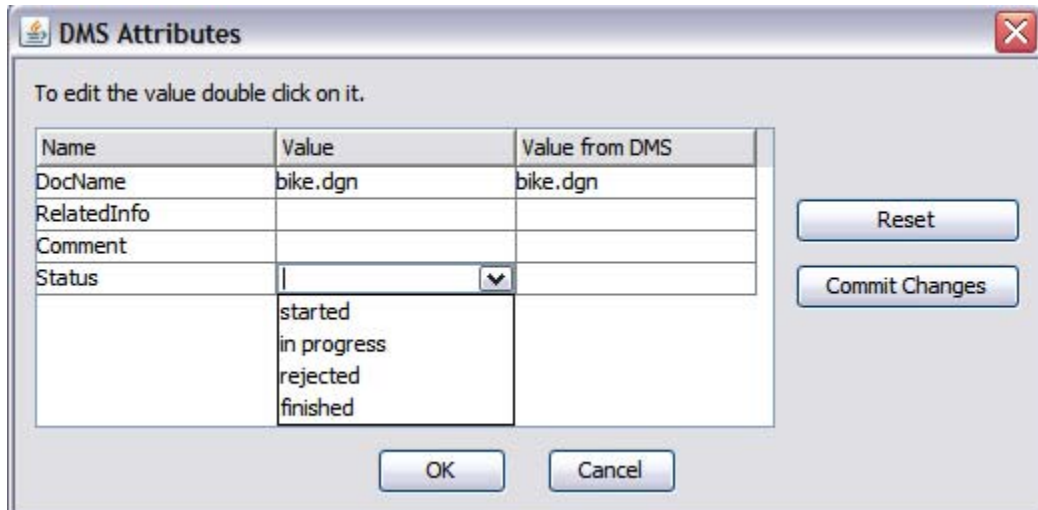


Figure 3.30: DMS Attributes dialog with single-valued pick list.

## 2. Multiple-Valued Pick List

Click on the **Value** field of a DMS attribute that has a multi-valued pick list, a pop up dialog shows a list of values from which you can select multiple values and click **OK**.

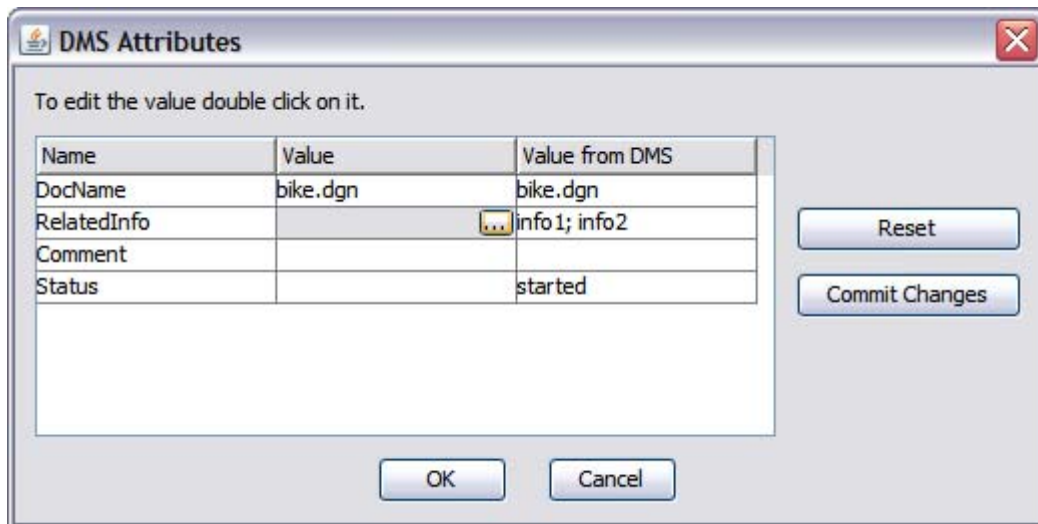


Figure 3.31: DMS Attributes dialog with multiple-valued pick list.

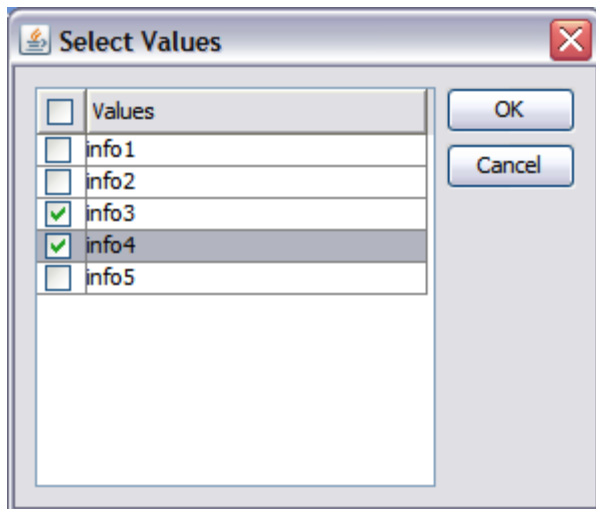


Figure 3.32: Select Value dialog

## 3.16 AutoVue Mobile & Markup Policy

### 3.16.1 Creating a Mobile Pack

1. View a file in AutoVue.
2. From the AutoVue menu, select **Collaborate**, and then select **Create Mobile Pack**. The Create Mobile Pack dialog appears.

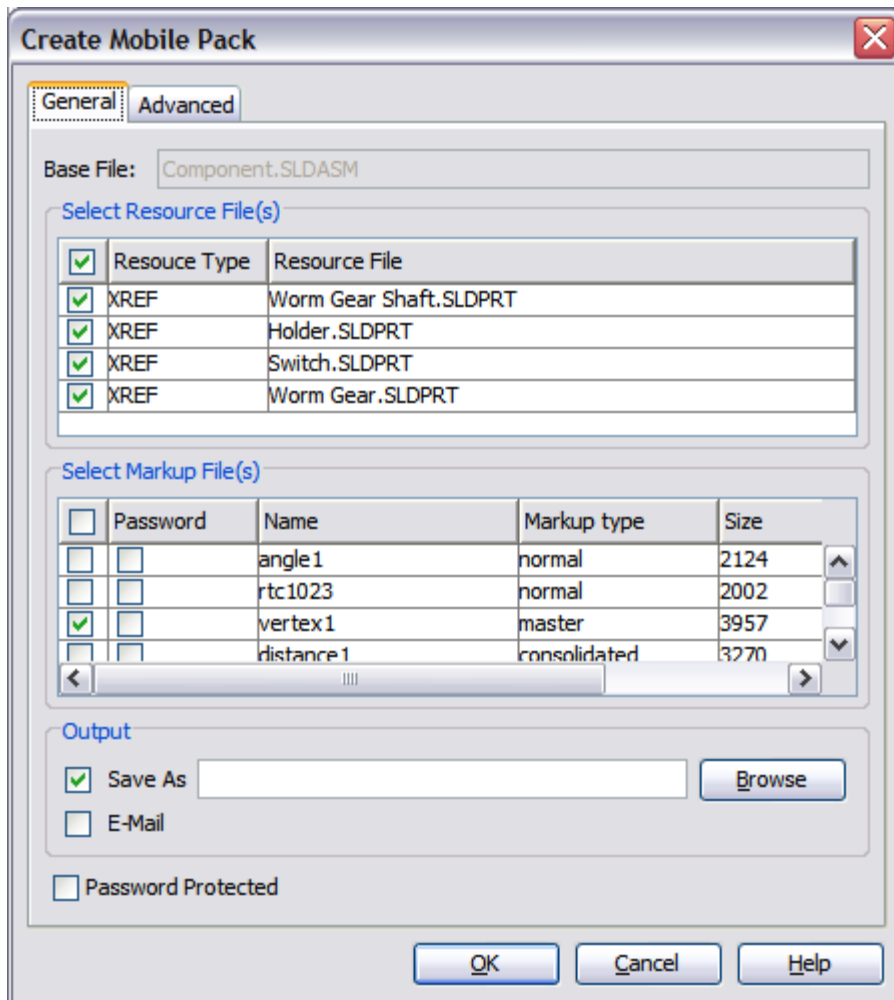


Figure 3.33: Create Mobile Pack dialog

- Click the **General** tab to view the following options:

Option	Description
Base File	Displays the file path of the base file.
Select Resource File(s)	Lists all the fonts, XRefs, and other external resources that are used to fully display the base file. As a default, all resource files are selected.
Select Markup File(s)	Lists all Markup files associated with the base file. You can password protect single or multiple Markup files.
Output	You can select the output location for the Mobile Pack, and also send the file using your default e-mail client.
Password Protected	You can password protect the Mobile Pack.

- Select the Resource files and Markup files to include in the Mobile Pack.
  - To password protect the Markup files, select the **Password** check box next to the Markup file and enter a password in the Password dialog.
  - From the Output options, click **Browse** to the Mobile Pack locally or enter the file path and name for the Mobile Pack in the **Save As** field.
  - To send the Mobile Pack using your default e-mail client, select the **E-Mail** check box.
  - To password protect the Mobile Pack, select the **Password Protected** check box and enter a password.
  - To select **Advanced** options (such as including streaming file and setting an expiry date on the Mobile Pack), continue to the next step. Otherwise, click **Finish** to complete Mobile Pack creation.
4. Click the **Advanced** tab.

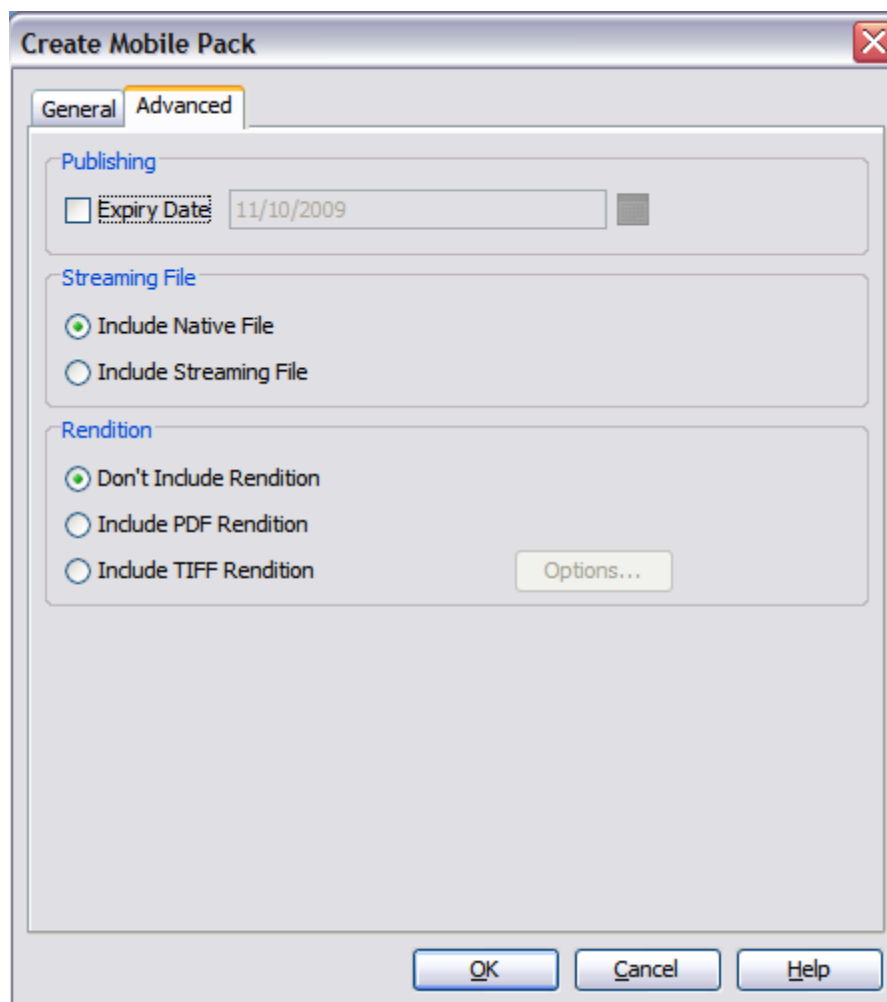


Figure 3.34: Create Mobile Pack dialog

**Note:** Depending on the Company Wide Policy settings, the Advanced tab options might be disabled.

The following table lists the options available in the **Advanced** tab:

Option	Description
Publishing	Lets you specify an expiry date for the Mobile Pack. After the expiry date, the content of the Mobile Pack will not be accessible.
Streaming File	<p>Lets you choose to include the native file or the streaming file in the Mobile Pack.</p> <p>There are certain limitations when loading streaming files:</p> <ul style="list-style-type: none"> <li>• Streaming files do not support blocks and views options.</li> <li>• Streaming file requirements change with each release of AutoVue. As a result, a streaming file from a previous version of AutoVue cannot be loaded in the latest release.</li> <li>• Streaming files are platform-specific. For example, a streaming file created on a Windows platform will not work on a UNIX platform, and vice versa.</li> </ul> <p><b>Note:</b> For 3D files, including the streaming file reduces the file size of the Mobile Pack. Also, since native files are not released, including the streaming file increases security.</p>
Rendition	Lets you choose to include a PDF or TIFF rendition in the Mobile Pack.

- To set an expiry date for the Mobile Pack, from the Publishing option, select the **Expiry Date** check box and then select a date. The Mobile Pack cannot be opened after this expiry date.
  - To include a streaming file, from the **Streaming File** option, select whether to include a native file or streaming file in the Mobile Pack.
  - From the **Rendition** option, you can include a PDF or TIFF rendition in the Mobile Pack.
  - Click **OK** to complete Mobile Pack creation.
5. If you selected the E-Mail check box, your default e-mail client opens with the Mobile Pack (\*.avp) as an attachment. Otherwise, the Mobile Pack is output to the specified location.

### 3.16.2 Markup Policy



When creating AutoVue Mobile Pack in the sample integration of ISDK, a default markup policy file will be included. According to this markup policy file, after a Mobile Pack is created, and when work with the Mobile Pack in a disconnected environment using AutoVue Desktop Version or the desktop deployment of AutoVue:

- New Markup file creation inside the Mobile Pack is allowed.
- The Markup file created inside the Mobile Pack is editable.
- Only the owner can modify master Markup files created inside the Mobile Pack.
- Only the owner can delete master Markup files created inside the Mobile Pack.
- Master Markup files will be loaded automatically when opening the Mobile Pack.
- The Markup files can be listed in the Markup File Open dialog.

- It is not allowed to modify or delete Markup files that have been created before the Mobile Pack is generated. (TODO: It is the case for AV 19.3.4. Need to check with AV20 and might be replaced with new rules)

### 3.16.3 Working on Mobile Pack

TODO: The following is limited to AV19.3.4 and AutoVue Desktop version. Replace with the proper one.

1. Open a Mobile Pack using AutoVue Desktop Version or the desktop deployment of AutoVue.
2. Enter the password if the mobile pack is password protected.
3. The native file or streaming file opens in AutoVue with all associated XRefs, resource files, markups, and renditions that are included in the Mobile Pack.
4. To view the Rendition file included in the Mobile Pack, from the AutoVue menu bar, select **Collaborate**, and then select **View Rendition from Mobile Pack**.  
Note: It is not possible to add markups to a rendition.
5. To open Markup files included in the Mobile Pack, click the **Markup Indicator** icon  in the status bar or click **Open Markup(s)**  from the menu bar. The Choose a New or an Existing Markup dialog appears.
6. You can click **Create a new Markup file** to create a new Markup file in the Mobile Pack or click **Choose an existing Markup file** and then select the Markup files to open Markup files included in the Mobile Pack.  
Note: You must enter a password when opening password-protected Markup files during Mobile Pack creation.
7. You can click **Import** to import a Markup file from your local machine. When the File Open dialog appears, select the Markup file to open.
8. You can create or modify Markup files inside the Mobile Pack based on the rules defined by the Markup Policy.
9. When saving a Markup file, you can check **Password Protected** box to password protect your Markup file and click **Export** to save it to a location on a local computer.
10. You can send the updated Mobile Pack with your default e-mail client. From the AutoVue menu bar, select **Collaborate**, and then select **Reply to Mobile Pack**. Your default e-mail client opens with the Mobile Pack (\*.avp) as an attachment.

### 3.16.4 Updating from Mobile Pack

When you have finished working with the Mobile Pack, you can update your changes to the backend Filesys system. You can synchronize all of the markups created in the Mobile Pack to your backend system. These markups will be associated with the file in the backend Filesys system from which you originally created the Mobile Pack.

1. From the Integration SDK home page, enter the login information for the Filesys Demo application and open the Mobile Pack from the AutoVue applet.
2. Select the **Collaborate** menu and then select **Update from Mobile Pack**. The Update from Mobile Pack dialog appears and includes the **Select Markup File(s)** and **Select Properties** lists.

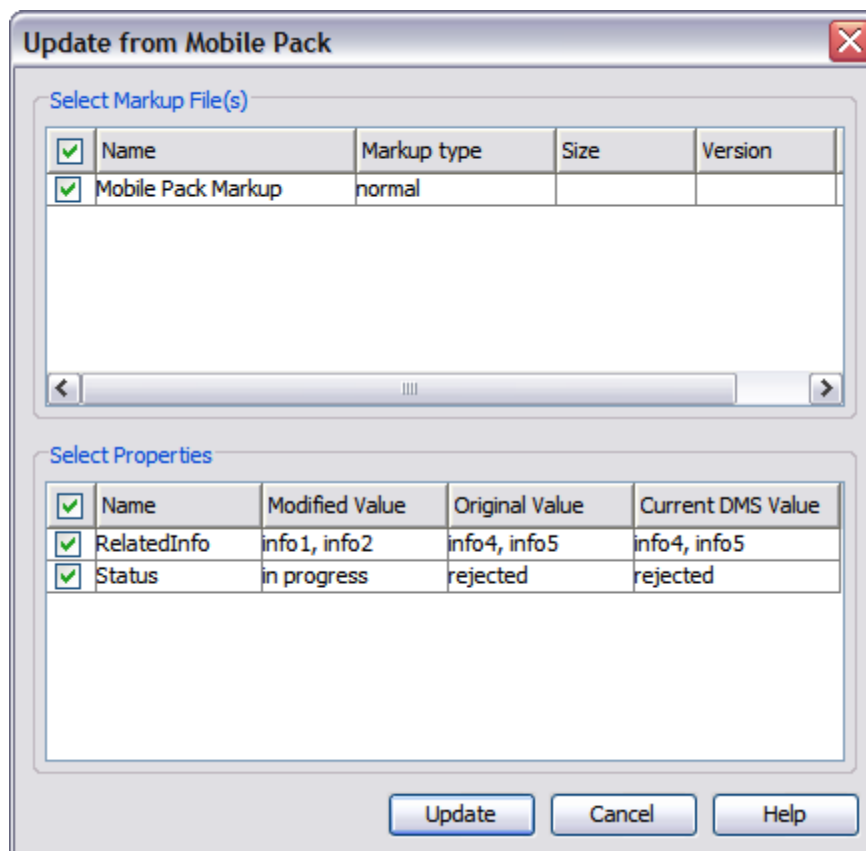


Figure 3.35:4 Filesys Demo - Update from Mobile Pack dialog

3. The **Select Markup File(s)** list displays the markups that can be imported back to Filesys. To select a Markup file to import, select the corresponding check box.
4. The **Select Properties** list displays new properties if a new Intellistamp is added. The modified value, original value, and current DMS value appear in their respective columns. The modified value contains the new Intellistamp properties for the Mobile Pack. The original value contains the Intellistamp properties in Filesys when the Mobile Pack was created. The current DMS value lists current values in Filesys.
5. To select a property to update, from the Select Properties list, select the corresponding check box.
6. Click **Update**.

The Markup files and attributes in Filesys are updated from your local Mobile Pack.

### 3.17 Authentication & Login Dialog

Before a file can be viewed in the AutoVue applet, you need to provide valid user credential.

You can input your username and password in two ways:

1. From the Integration SDK home page's Filesys Demo section.  
Note: On Jdeveloper 11g or with WebLogic version 10.3.1 above, this way of logging in is not valid to view a file in AutoVue.

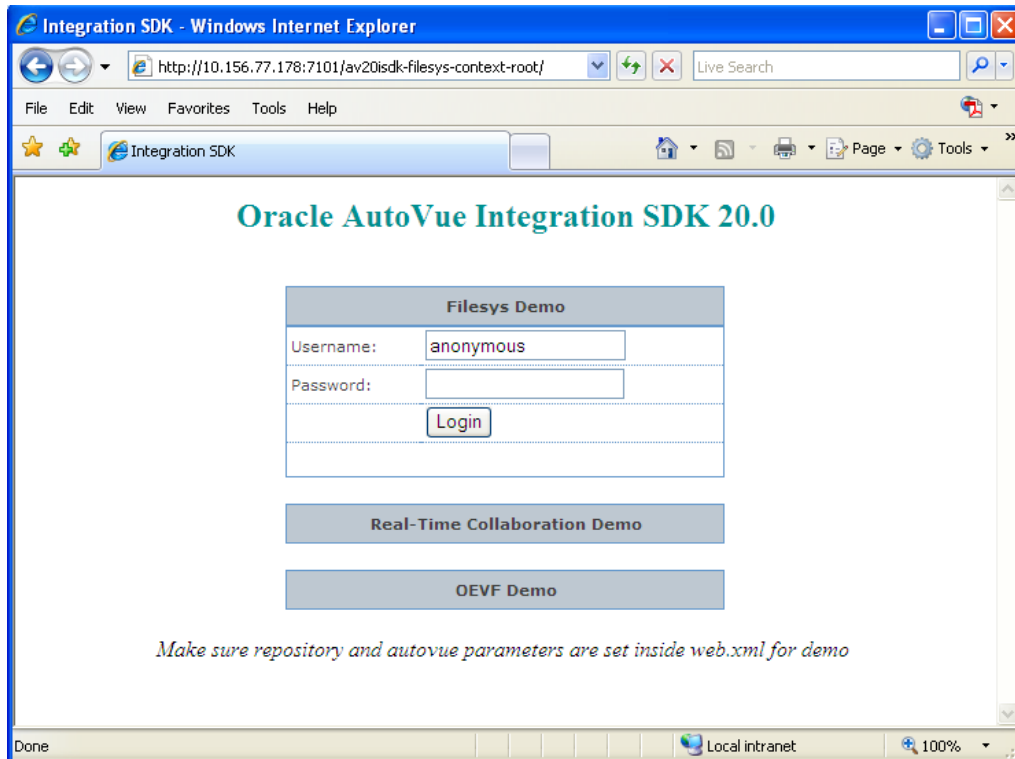


Figure 3.36: Filesys Demo - Login

2. When the Authorization information dialog appears.

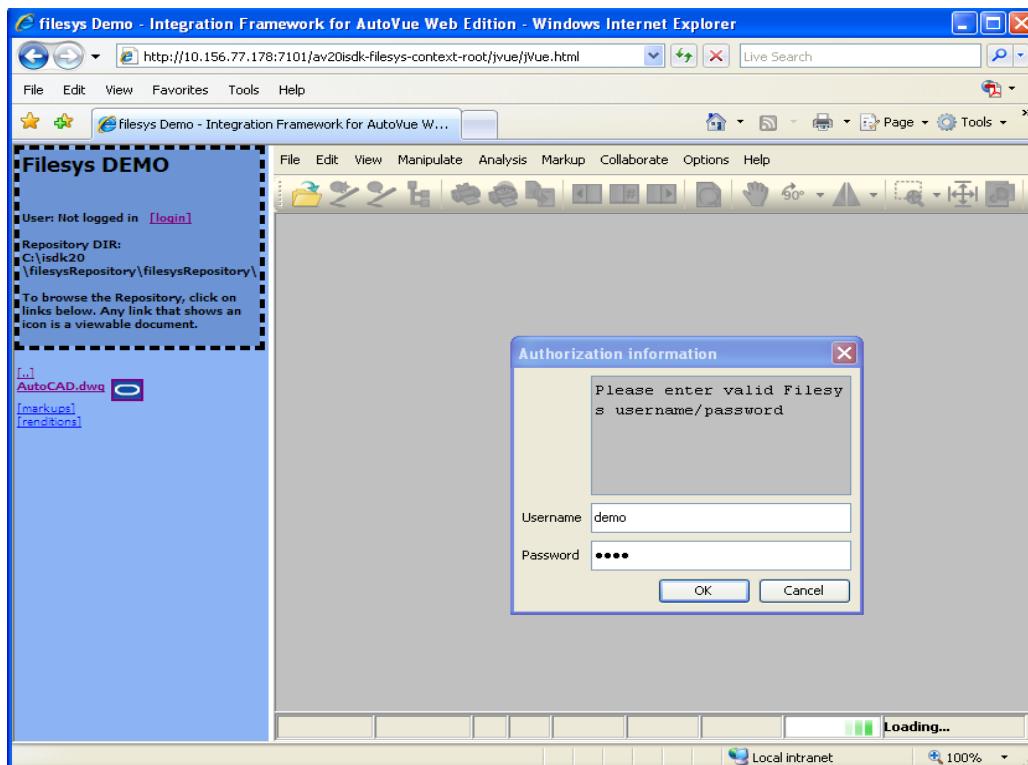


Figure 3.37: Filesys Demo - Authorization information dialog



After you enter your user name and password in the Authorization information dialog and then click **OK**, the file you want to view will start to load.

**Note:** You can refresh the Web browser to view user information on the Filesys Demo page. In doing so, the AutoVue applet restarts and you need to click the file to view again. If the AutoVue applet is started in a new window, there will be two AutoVue applet windows available and you should close the previous one.

### 3.18 Embedded vs. New Window

Based on the configuration of Integration SDK Demo, the AutoVue applet can be launched in an embedded window or in a new window. Refer to *Integration SDK Installation Guide* for more information.

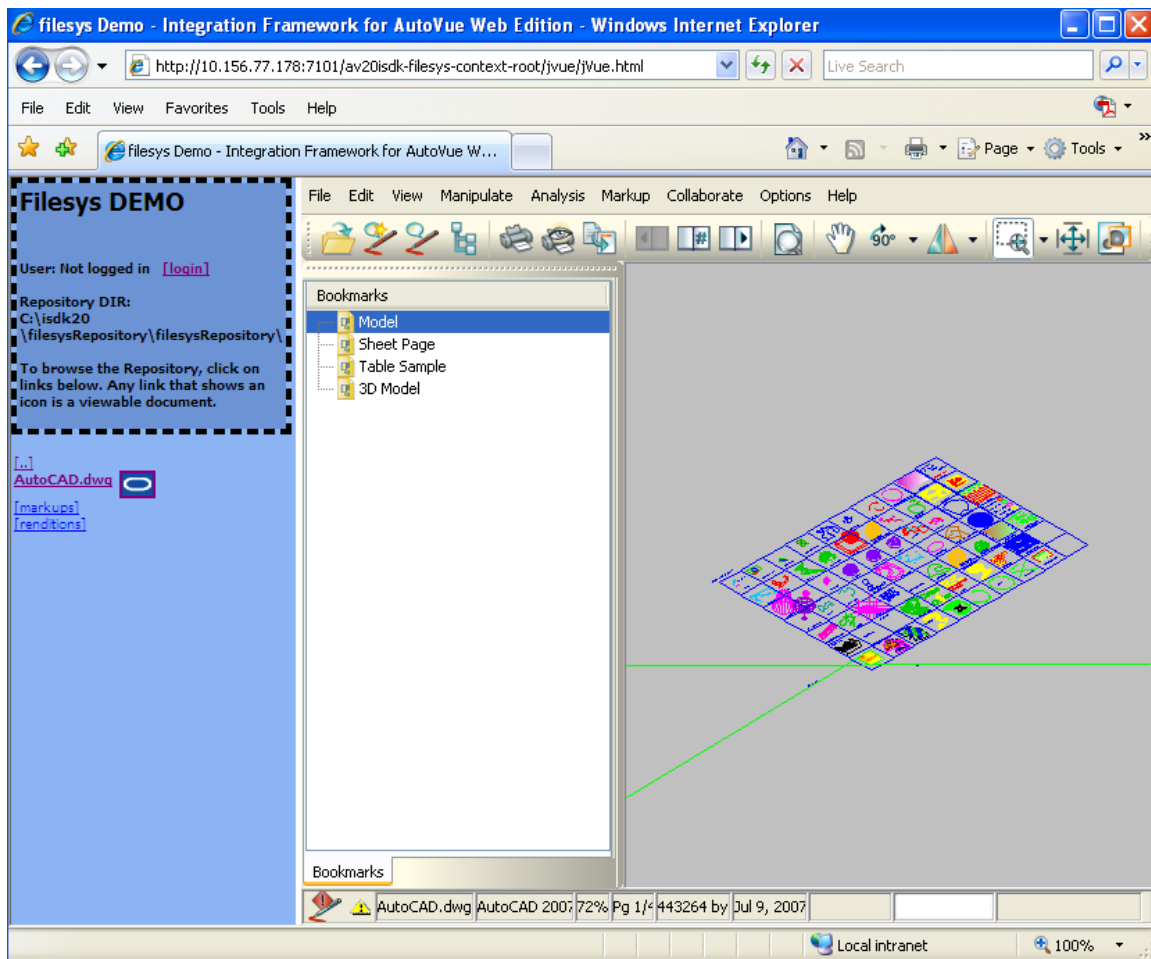


Figure 3.38: Filesys Demo - AutoVue launched in embedded window

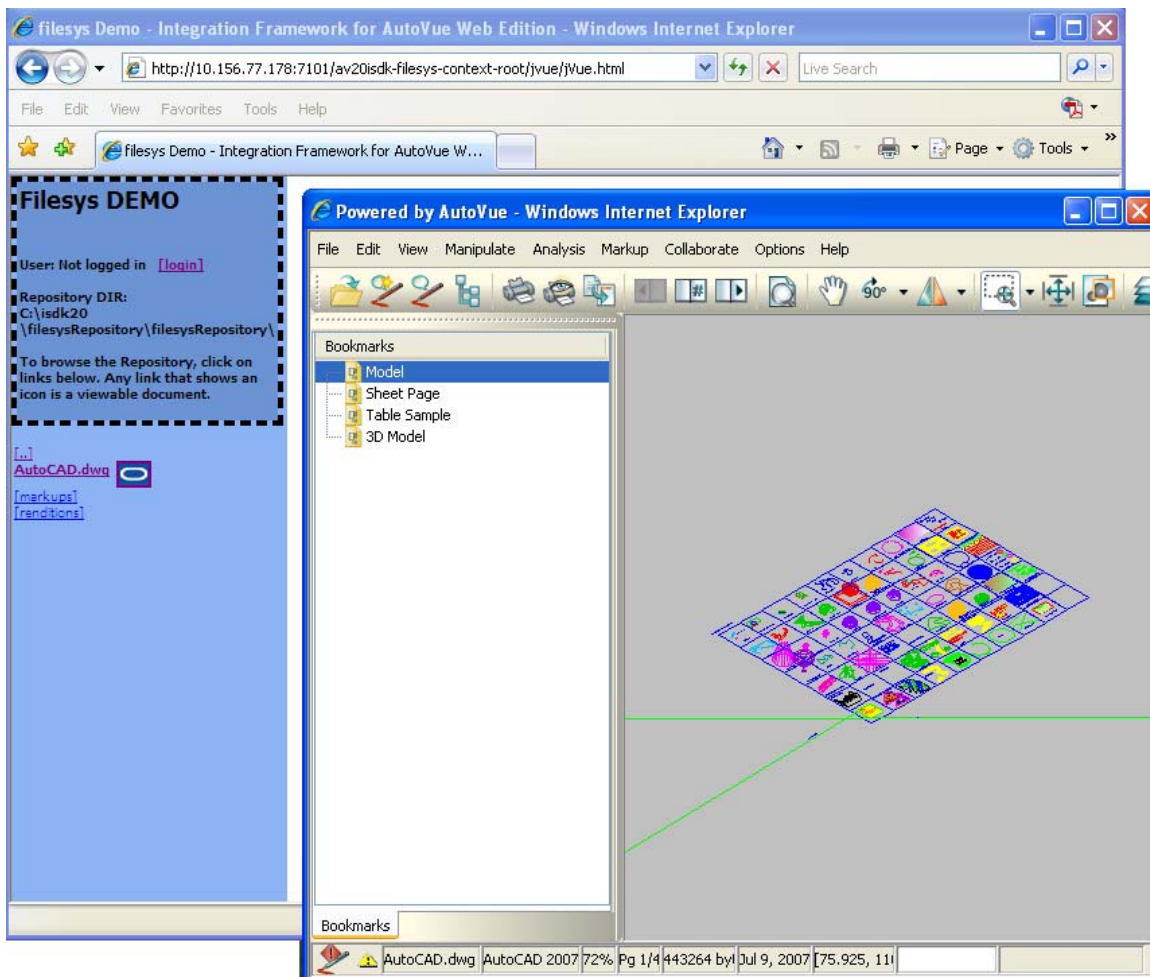


Figure 3.39: Filesys Demo – AutoVue launched in new window

### 3.19 Pop-up Blocker

When the AutoVue applet is configured to open in a pop-up window and the pop-up blocker prevents the showing of AutoVue applet, user will be alert about it.

#### 1. Set up Pop-up blocker for Web browser

For IE:

- From the **Tool** menu, select **Pop-up Blocker** and then select **Turn on Pop-up Blocker**.
- From the **Tool** menu, select **Pop-up Blocker** and then select **Pop-up Blocker Settings** and remove allowed site
- From the **Tool** menu, select **Internet Options**.  
The Internet Options dialog appears.
- Click the **Security** tab and then select **Local Intranet**.
- Click **Sites** and then deselect all the checkboxes.

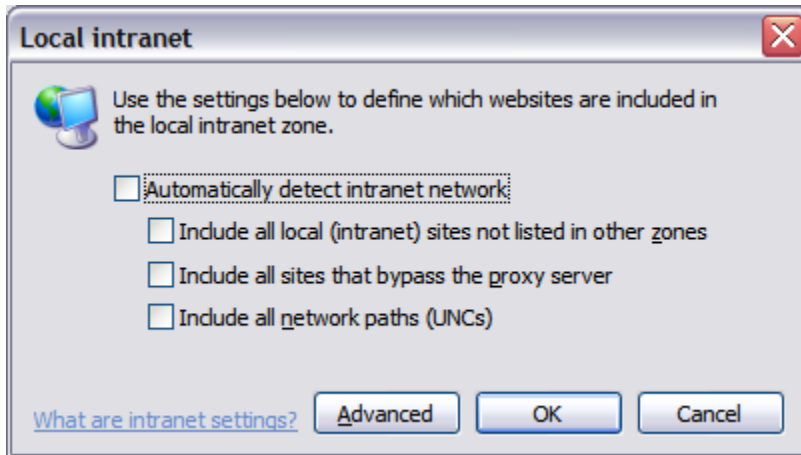


Figure 3.40: Deselect all the check boxes

For FireFox:

- From the **Tools** menu, select **Options**.  
The Options dialog appears.
  - Click **Content** and then select the **Block popup windows** checkbox.
  - To the right of Block popup windows click **Exceptions** and then remove the exception website
2. Close Web browser and re-launch.
  3. Browse to Filesys Demo page.  
The following alert dialog appears when Filesys tries to launch AutoVue in pop-up mode.  
Click **OK** to close this alert dialog.

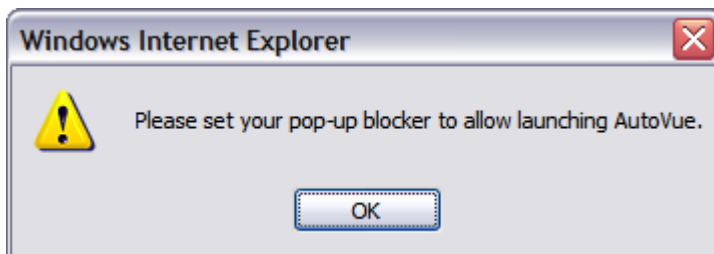


Figure 3.41: Alert dialog

4. Click to enable pop-ups for the Web browser and refresh the browser.

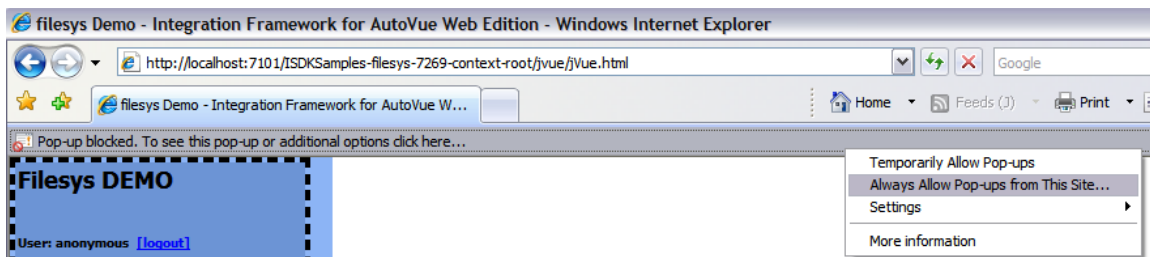


Figure 3.42: Enable pop-ups in IE

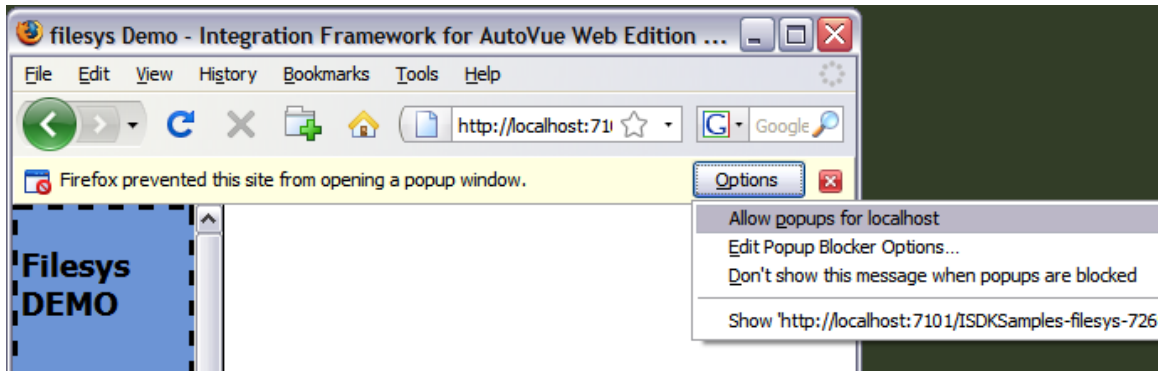


Figure 3.43: Enable pop-ups in FireFox

### 3.20 Image Preview

Generate BMP rendition for a file using AutoVue Web Services or using Conversion from AutoVue (See [2.9.3 Conversion](#)).

Go to filesys demo page (See [2.1 Filesys Demo Page](#))

### 3.21 Prompt to Save Markup on Exit

1. View a file in AutoVue
2. Create or update a markup
3. Close the AutoVue applet window.  
The Save Markup dialog appears.

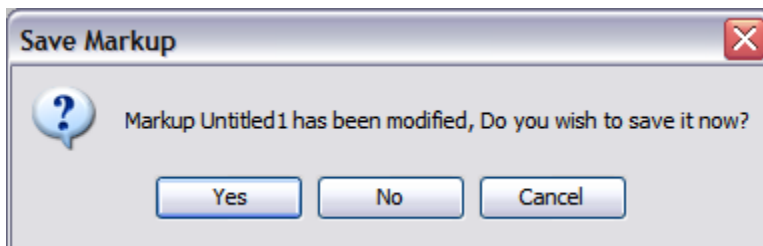


Figure 3.44: Save Markup dialog

If **No** or **Cancel** is clicked, the AutoVue applet closes without saving the markup.  
If **Yes** is clicked, the Save Markup File As dialog appears and lets you save the markup.

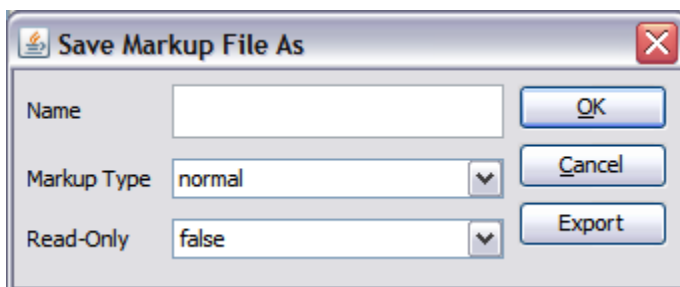


Figure 3.45: Save Markup File As dialog

## 4 Real-Time Collaboration Demo

### 4.1 Real-Time Collaboration Demo page

1. From the Oracle AutoVue Integration SDK demo home page, click **Real-Time Collaboration Demo** to launch the Oracle AutoVue Real-Time Collaboration (RTC) Demo page.

The RTC demo page contains three parts:

- Instructions
- Start Meeting
- Join Meeting

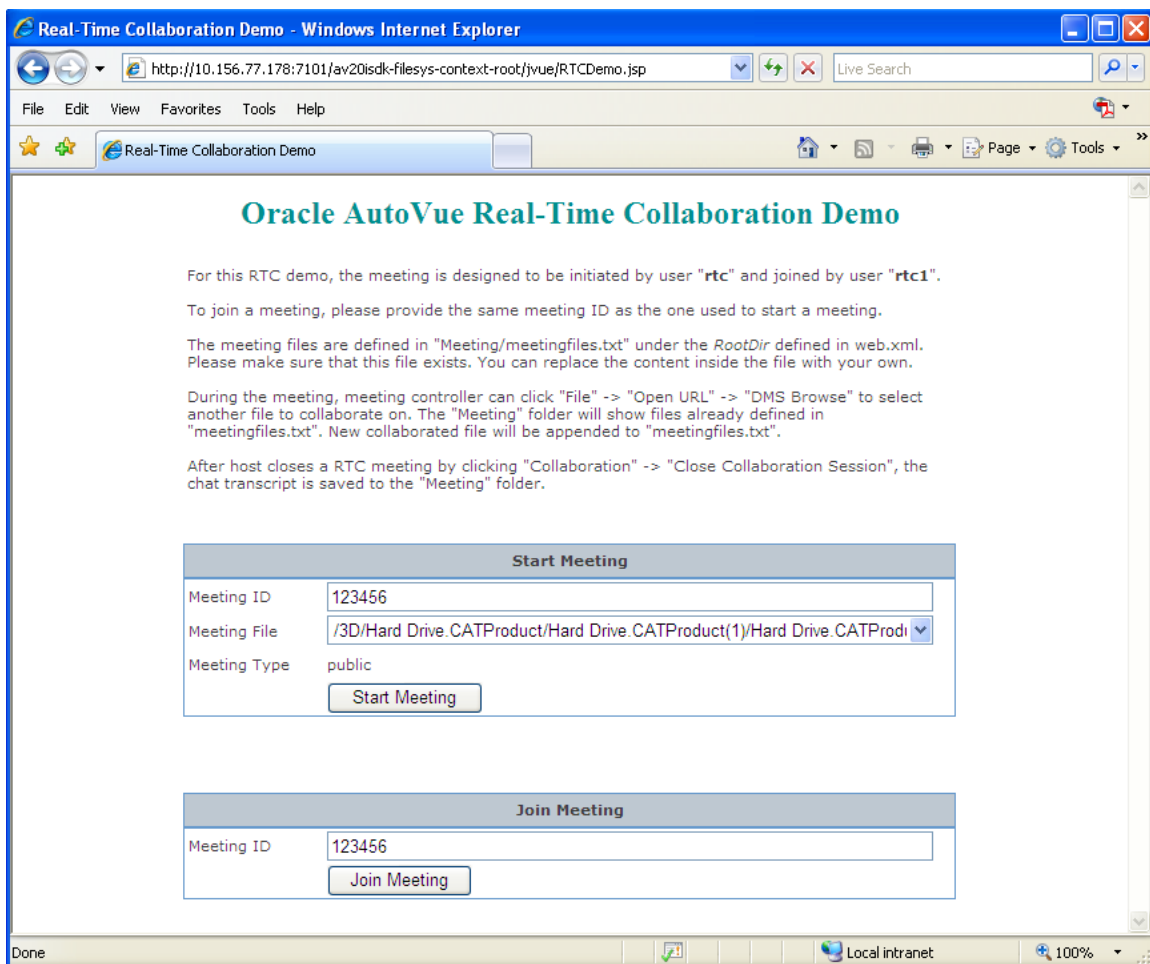


Figure 4.1: RTC Demo

2. Prior to starting or joining a meeting, read the instructions carefully.

## 4.2 Start a Meeting

1. Input a new Meeting ID or use the default one.
2. Select a Meeting File from the drop-down list.
3. Click **Start Meeting**.  
A window opens and launches AutoVue. Verify that the AutoVue Server is running.
4. In the Authorization information dialog, enter **rtc** in Username field and **rtc** in Password field.  
Note that the Authorization information dialog always opens in this RTC demo.

The meeting file is launched; AutoVue enters collaboration mode and displays an empty DemoRealTimeCollaboration markup entity. As shown in the following figure, the AutoVue status bar shows that "User rtc has been assigned to be the new host".

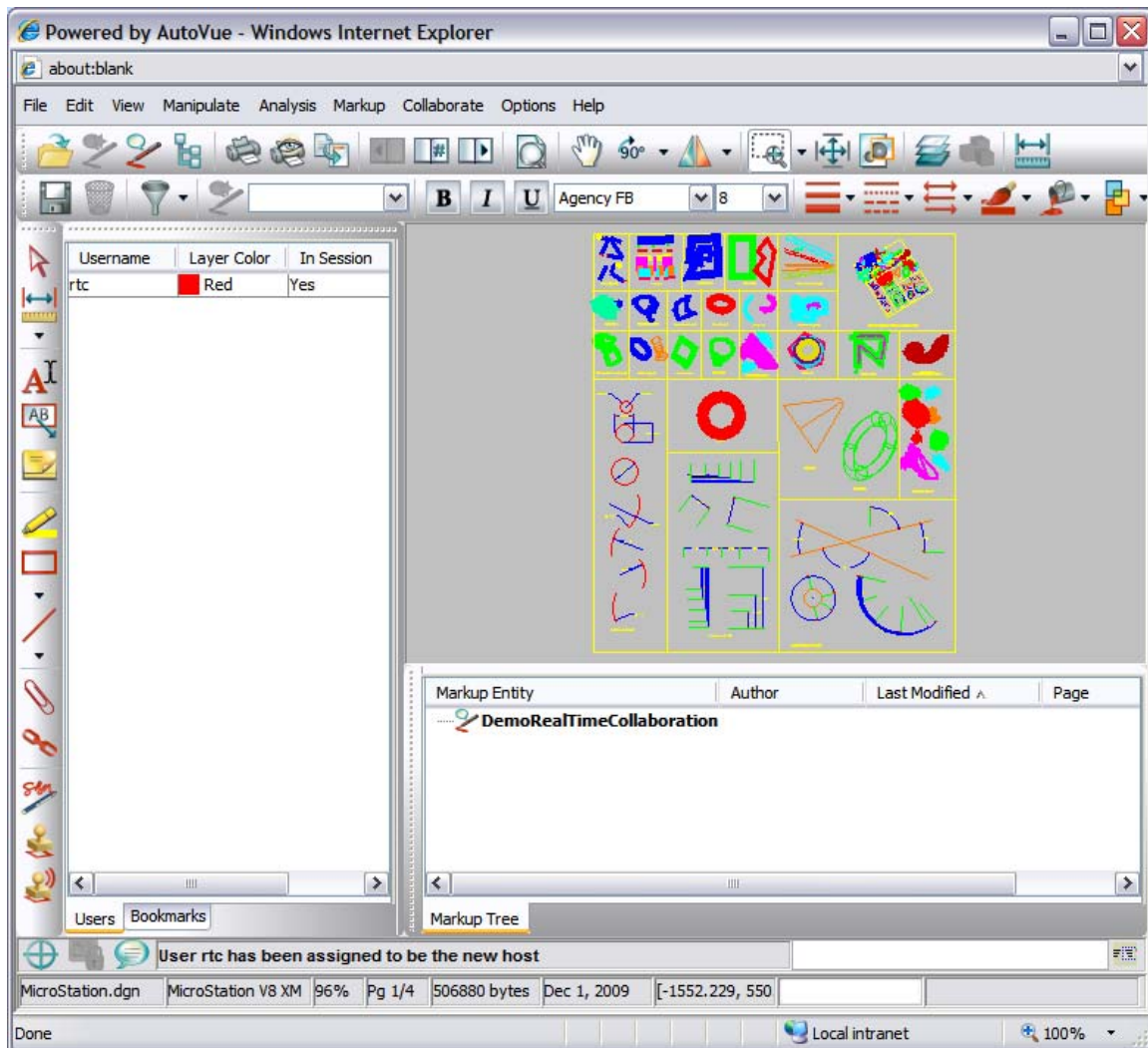


Figure 4.2: Starting a meeting

## 4.3 Join a Meeting

1. Input a Meeting ID that has been used to start a meeting.
2. Click **Join Meeting** and a window opens to launch AutoVue.

3. In the Authorization information dialog, enter a valid username and password. For example, username **rtc1** and password **rtc1**.
4. AutoVue enters collaboration mode and displays the ongoing meeting. At the bottom of the AutoVue status bar, it shows "User \*\*\* has joined the session".  
Note that the user name for the Windows system is used instead of the username input in the Authorization dialog.

## 4.4 Conduct Meeting

During the meeting, users can create markups, chat, request/pass control, change meeting documents and so on. Refer to the "Real-Time Collaboration" section of the *AutoVue User's Manual* for more information. The following describes specific tasks when browsing Meeting document for Filesys.

### Step 1:

- From the AutoVue menu bar, select **File** and then **Browse...** or select **File**, then select **Open File** and then click **DMS**.
- Click **Meeting** folder to show meeting files
- Select a file and click **OK**
- AutoVue launches the file

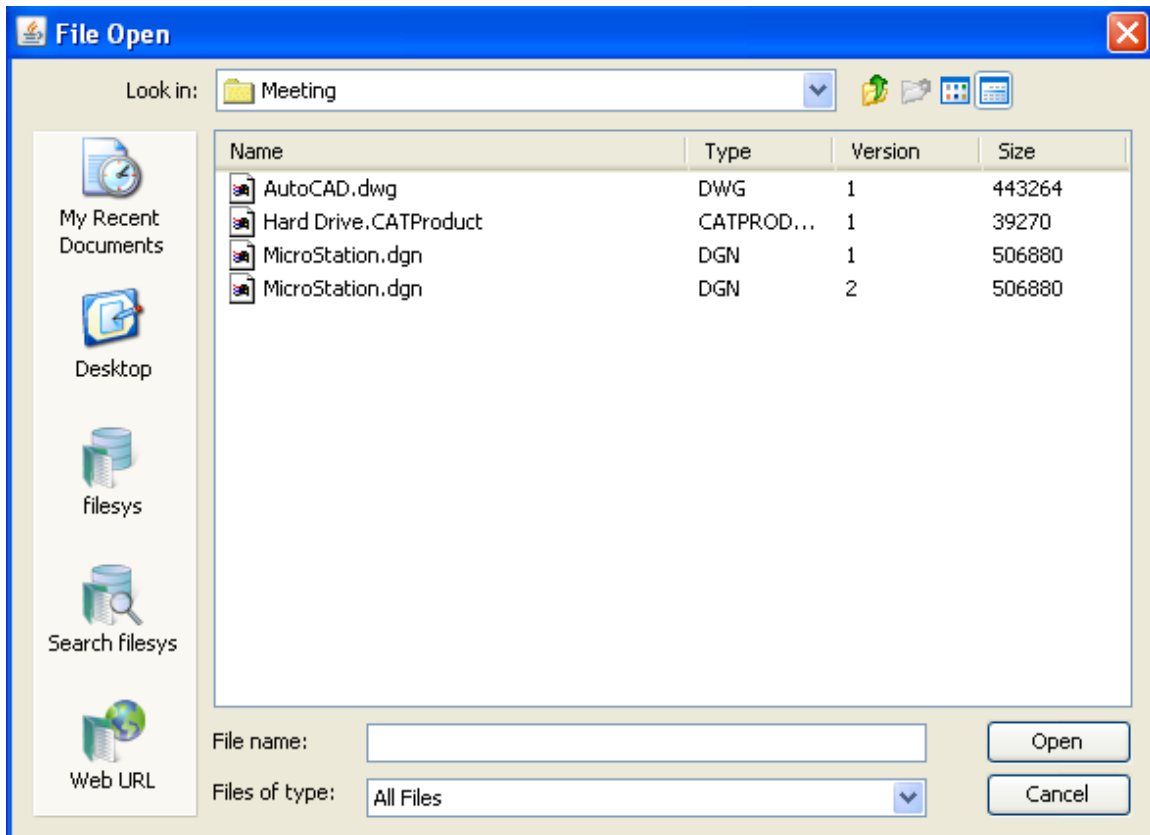


Figure 4.3: File Open dialog

**Step 2:**

- From AutoVue GUI, click **File -> Browse...** or **File -> Open File -> DMS**
- Click and select any other file that is not listed in the **Meeting** folder
- Click OK
- Choose to save or not save previous collaboration markup in the pop-up windows
- AutoVue launches the file.

**Step 3:**

- From AutoVue GUI, click **File -> Browse...** or **File -> Open File -> DMS**
- Click **Meeting** folder to show meeting files
- The file viewed in step2 is listed among the meeting files

## 4.5 Close Meeting

1. From AutoVue GUI, the Host of the meeting selects **Collaboration**, and then selects **Close Collaboration Session..**
2. Click **OK** to save collaboration markup
3. Launch Filesys Demo and browse the Meeting folder.  
A chat file will present that records chat content during the collaboration session

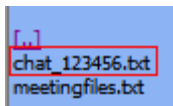


Figure 4.4: Chatfile



## 5 Oracle Enterprise Visualization Framework Demo

1. From the Oracle AutoVue Integration SDK demo home page, click **OEVF Demo** to launch the Oracle AutoVue OEVF Demo page.

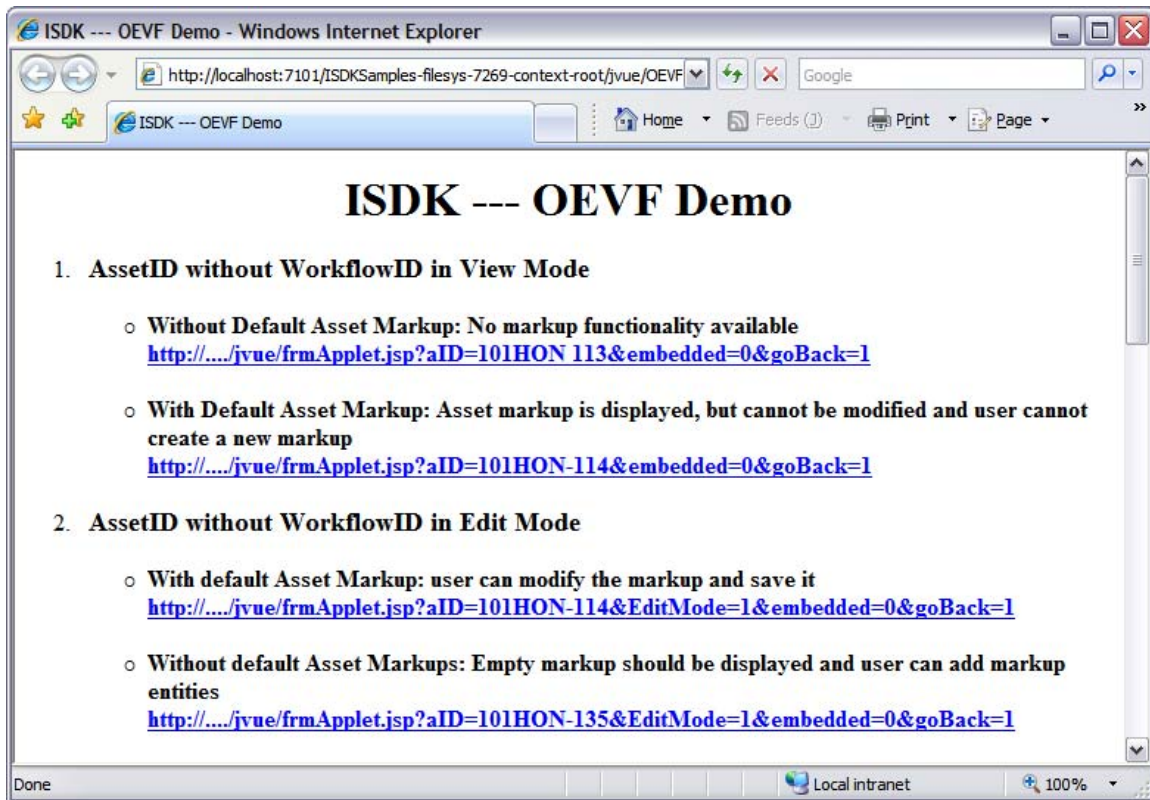


Figure 5.1: Starting a meeting

2. Review the descriptions on the OEVF Demo page.
3. Click a link in the demo page.  
AutoVue launches in a pop-up window.
4. Enter username and password in the Authorization dialog.
5. AutoVue launches the file and presents the designed GUI.
6. Perform actions based on the description for the link in OEVF Demo page.

## 6 Feedback Section

Oracle Corp. products are designed according to your needs. We would appreciate your feedback, comments or suggestions. Contact us by e-mail or telephone. Let us know what you think.

### General Inquiries:

Telephone: +1.514.905.8400 or +1.800.363.5805  
E-mail: [autovuesales\\_ww@oracle.com](mailto:autovuesales_ww@oracle.com)  
Web Site: <http://www.oracle.com/us/products/applications/autovue/index.html>

### Sales Inquiries:

Telephone: +1.514.905. 8400 or +1.800.363.5805  
E-mail: [autovuesales\\_ww@oracle.com](mailto:autovuesales_ww@oracle.com)

### Customer Support:

Web Site: <http://www.oracle.com/support/index.html>