

Oracle® Insurance Policy Administration

Set-up Rules Palette

Installation Instructions – Step 3

Version 9.3.1.0

Documentation Part Number: E21044-01

March 2011

Copyright © 2009, 2011 Oracle and/or its affiliates. All rights reserved.

This software and related documentation are provided under a license agreement containing restrictions on use and disclosure and are protected by intellectual property laws. Except as expressly permitted in your license agreement or allowed by law, you may not use, copy, reproduce, translate, broadcast, modify, license, transmit, distribute, exhibit, perform, publish, or display any part, in any form, or by any means. Reverse engineering, disassembly, or decompilation of this software, unless required by law for interoperability, is prohibited.

The information contained herein is subject to change without notice and is not warranted to be error-free. If you find any errors, please report them to us in writing.

If this software or related documentation is delivered to the U.S. Government or anyone licensing it on behalf of the U.S. Government, the following notice is applicable:

U.S. GOVERNMENT RIGHTS

Programs, software, databases, and related documentation and technical data delivered to U.S. Government customers are “commercial computer software” or “commercial technical data” pursuant to the applicable Federal Acquisition Regulation and agency-specific supplemental regulations. As such, the use, duplication, disclosure, modification, and adaptation shall be subject to the restrictions and license terms set forth in the applicable Government contract, and, to the extent applicable by the terms of the Government contract, the additional rights set forth in FAR 52.227-19, Commercial Computer Software License (December 2007). Oracle USA, Inc., 500 Oracle Parkway, Redwood City, CA 94065.

This software is developed for general use in a variety of information management applications. It is not developed or intended for use in any inherently dangerous applications, including applications which may create a risk of personal injury. If you use this software in dangerous applications, then you shall be responsible to take all appropriate fail-safe, backup, redundancy, and other measures to ensure the safe use of this software. Oracle Corporation and its affiliates disclaim any liability for any damages caused by use of this software in dangerous applications.

Oracle is a registered trademark of Oracle Corporation and/or its affiliates. Other names may be trademarks of their respective owners.

This software and documentation may provide access to or information on content, products, and services from third parties. Oracle Corporation and its affiliates are not responsible for and expressly disclaim all warranties of any kind with respect to third-party content, products, and services. Oracle Corporation and its affiliates will not be responsible for any loss, costs, or damages incurred due to your access to or use of third-party content, products, or services.

Where an Oracle offering includes third party content or software, we may be required to include related notices. For information on third party notices and the software and related documentation in connection with which they need to be included, please contact the attorney from the Development and Strategic Initiatives Legal Group that supports the development team for the Oracle offering. Contact information can be found on the Attorney Contact Chart.

The information contained in this document is for informational sharing purposes only and should be considered in your capacity as a customer advisory board member or pursuant to your beta trial agreement only. It is not a commitment to deliver any material, code, or functionality, and should not be relied upon in making purchasing decisions. The development, release, and timing of any features or functionality described in this document remains at the sole discretion of Oracle.

This document in any form, software or printed matter, contains proprietary information that is the exclusive property of Oracle. Your access to and use of this confidential material is subject to the terms and conditions of your Oracle Software License and Service Agreement, which has been executed and with which you agree to comply. This document and information contained herein may not be disclosed, copied, reproduced, or distributed to anyone outside Oracle without prior written consent of Oracle. This document is not part of your license agreement nor can it be incorporated into any contractual agreement with Oracle or its subsidiaries or affiliates.

TABLE OF CONTENTS

TABLE OF CONTENTS	3
OVERVIEW	4
CUSTOMER SUPPORT	4
PREREQUISITES.....	4
ACCESS THE APPLICATION.....	5
<i>UPLOAD RULES PALETTE TO WEB APPLICATION UTILITY</i>	<i>5</i>
CREATE RULES PALETTE ENVIRONMENT PROPERTIES.....	7
WEB APPLICATION UTILITY SCREENSHOT.....	8
CREATE USER NAMES AND PASSWORDS FOR RULES PALETTE USERS.....	9
STEPS TO DOWNLOAD THE RULES PALETTE FROM THE WEB APPLICATION UTILITY	9
STEPS TO CREATE AN ENVIRONMENT CONNECTION.....	10
LOG ON THE RULES PALETTE	13
<i>Steps to Log on the Rules Palette</i>	<i>13</i>
CREATE USER NAMES AND PASSWORDS	14
<i>Steps to Create a new Security Group</i>	<i>14</i>
<i>Associate Users with Security Groups.....</i>	<i>14</i>
<i>Steps to Add a New User</i>	<i>14</i>
SEND INFORMATION TO RULES PALETTE USERS.....	15

OVERVIEW

The Oracle Insurance Policy Administration (OIPA) application and the Rules Palette application together form a complete solution. A four step installation process is required in order to install and set-up both applications. These instructions represent step three of that process. Refer to the documentation library included with this release for the other three steps of installation.

The Web Application Utility allows a build manager or server administrator to configure the Rules Palette environment properties and remote debugging Web Service URL. Once this information has been saved, the host name and port number are sent to the Rules Palette users along with palette user names and passwords. They will use the host and port information in the first step of the Rules Palette environment creation wizard. A Web Service will authenticate the users based on the palette user name and password that each user enters. The environment properties will be automatically populated from the Web Application Utility if the users are authenticated. The users will then only need to enter database user names and passwords to complete the environment creation process.

CUSTOMER SUPPORT

If you have any questions about the installation or use of our products, please visit the My Oracle Support website: <https://support.oracle.com>, or call (800) 223-1711.

PREREQUISITES

- OIPA deployed on a server of your choice
- Web Application Utility deployed on a server of your choice
- Database of your choice

ACCESS THE APPLICATION

Once the application has been deployed, you can access it through the following URL:

<http://hostname:port/PaletteConfig/>

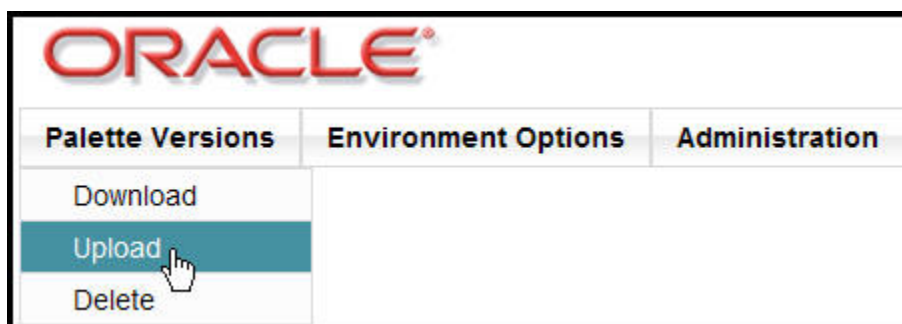
The default log-in ID is *admin* and the default password ID is *admin*. Reset the log-in password immediately using the Administration tab at the top of the utility.

UPLOAD RULES PALETTE TO WEB APPLICATION UTILITY

1. Move the Rules Palette zip file out of the Media Pack download and extract it to a folder on your desktop.
2. Download the two swing-x.jar files and place them in the **asgraphicruleside\modules\ext** folder of the Rules Palette.
 - Navigate to <https://swingx.dev.java.net/>.
 - Click **Documents & files** under **SwingLab Tools** on the left menu.
 - Click **Releases** then click **1.0**.
 - Click **SwingX-1.0**.
 - Click **Save** from the File Download dialog box and save the file to your desktop.
 - Open the file and double-click the **swingx-1.0** folder and then double-click the **dist** folder.
 - Select the **swingx1.0.jar** and **swingxbeaninfo-1.0.jar** files and move them to the **asgraphicruleside\modules\ext** folder, which is located in the Rules Palette folder where you saved the application files.
3. Download the necessary database driver files. The type of database being used will determine the .jar files that need to be downloaded. It is recommended that a temporary subdirectory be created to house the downloaded .zip files.
 - a. Oracle database: no .jar files to download.
 - b. SQL Server database: download the jtds.jar file. Download jtds from the following site: <http://sourceforge.net/projects/jtds/> .
 - i. Click Download on the top menu bar.
 - ii. Click the download link for jtds (release 1.2.2).
 - iii. Select the jtds-1.2.2-dist.zip file. Save the download .zip file to the temporarydirectory created to store the .zip files.
 - iv. Open the downloaded .zip file and extract the file jtds-1.2.2 from the root of the .zip file.
 - v. Rename the file jtds.jar.
 - i. Copy the jtds.jar file into **asgraphicalruleside\modules\ext**, which is located in the Rules Palette folder where you saved the application files.
 - c. DB2 database: The three necessary .jar files (db2jcc, db2jcc_license_cisuz, and db2jcc_license_cu) are included with the purchase of the DB2 software. These files are not available for download. Contact the IT department if assistance is needed to locate

these files. Copy the files into `lasgraphicalruleside\modules\ext`, which is located in the Rules Palette folder where you saved the application files.

4. Zip the Rules Palette files. They can only be uploaded to the Web Application Utility if they are in the form of a zip file.
5. Navigate to the Web Application Utility using the following URL:
`http://hostname:port/PaletteConfig/`. The hostname and port should be the one you used when you set-up the Web Application Utility.
6. Enter the default user name (admin) and password (admin) and select **login**.
7. Change the password immediately to a more secure password.
8. Click **Palette Versions | Upload**.



Web Application Utility Upload Menu Option

9. Click **Browse** and select the Rules Palette zip file, then click **Open**.
10. Click **Upload**.

Add additional versions of the Rules Palette by following the same steps listed above. Make sure each version has a distinctive name so that the user can select the appropriate version of the Rules Palette for download.

CREATE RULES PALETTE ENVIRONMENT PROPERTIES

The following steps allow the build manager to set-up the Rules Palette environment properties.

Steps for Build Manager to Set-up Environment Properties

1. Log into the Web Application Utility. Use *admin* for user name and password (or use the new user name and password you created in the section above).
2. Select **Environment Options**, then **Edit**.
3. Enter the information for the environment:
 - PaletteVersion – enter the version of the palette that will be used. This is used to ensure the corresponding OIPA version is used.
 - PaletteBuildNumber – leave this field blank.
 - ApplicationType – either OIPA or OINBU.
 - ApplicationEnvType – either Development or Production.
 - DebuggerWebserviceUrl – URL for the Web Service used to connect for remote debugging. The host and port information must match the host and port information for the application you are using. Then add /PASJava/service/DebuggerService?wsdl. **Ex:** http://hostname:port/PASJava/service/DebuggerService?wsdl
 - DebugUserID – enter your debug user ID.
 - DebugPassword – enter your debug password.
 - ApplicationDatabaseType – SqlServer2005, SqlServer, Oracle or DB2.
 - ApplicationDatabaseServer – hostname where the database is located.
 - ApplicationDatabasePort – database listener port.
 - ApplicationDatabaseName – name of the database. Only needed for SqlServer and DB2.
 - ApplicationDatabaseSchema – schemas of the database. Only needed for DB2 and Oracle.
 - ApplicationDatabaseUserName – enter the database user name. You can get this information from the database administrator.
 - ApplicationDatabasePassword – enter the database password. You can get this information from the database administrator.
4. Select the **Yes** radio button for IVS if you will be using an IVS environment. Select **No** if you are not using an IVS environment and skip to [step 6](#).
5. Enter the IVS environment information.
 - IVSDatabaseType – SqlServer, Oracle or DB2.
 - IVSDatabaseServer – hostname where the database is located.
 - IVSDatabasePort –database listener port.
 - IVSDatabaseName – name of the database.
 - IVSDatabaseSchema – schema of the database.
 - IVSDatabaseUserName – enter the database user name. You can get this information from the database administrator.
 - IVSDatabasePassword – enter the database password. You can get this information from the database administrator.
 - IVSEnv – name of the IVS environment that will be used.
 - IVSTrackNumber – track number of the IVS environment that will be used.

6. Select **Save**.

WEB APPLICATION UTILITY SCREENSHOT

ORACLE[®]

Palette Versions	Environment Options	Administration
PaletteVersion	version number	
PaletteBuildNumber	build number	
ApplicationType	OIPA	
ApplicationEnvType	Development	
DebuggerWebServiceUrl	http://host:port/Debug	
DebugUserName	Debug user name	
DebugPassword	
ApplicationDatabaseType	DB2	
ApplicationDatabaseServer	server name	
ApplicationDatabasePort	port number	
ApplicationDatabaseName	database name	
ApplicationDatabaseSchema	schema	
ApplicationDatabaseUserName	Database user name	
ApplicationDatabasePassword	

Environment Settings for Debugger and Application Database

IVS

☒ Yes ☐ No

IvsDatabaseType: DB2

IvsDatabaseServer: IVS database server

IvsDatabasePort: IVS port number

IvsDatabaseName: IVS database name

IvsDatabaseSchema: IVS database schema

IvsDatabaseUserName: IVS user name

IvsDatabasePassword:

IvsEnv: IVS environment

IvsTrackNumber: 1

Save Cancel

Environment Settings for IVS Database

CREATE USER NAMES AND PASSWORDS FOR RULES PALETTE USERS

After the environment properties are set-up in the Web Application Utility, user names and passwords must be created for Rules Palette users. You will first need to download, install and open the Rules Palette and create an environment connection. Then open the Admin Explorer and create the security groups and users.

STEPS TO DOWNLOAD THE RULES PALETTE FROM THE WEB APPLICATION UTILITY

1. In your browser, go to `http://hostname:port/PaletteConfig/` replacing the **hostname** and **port** with the correct information. This is the URL you used when [setting up Rules Palette environment properties](#).
2. Click **Download Palette Version**.

Note: You do not need to enter a user name and password.



Web Application Utility Download link

3. Click **Download** next to the version of the Rules Palette that you want to download.



Web Application Utility Download list

4. Click **Open** from the File Download window when it asks what you want to do with the file. It will take a few minutes for the file to download. Once the file has been downloaded, it should

automatically open with the compression software that is available on your system. If you do not have compression software, contact your IT department.

5. Extract the files using your compression software and save the files to your local computer in the following folder:

C:\Program files\Oracle\RulesPalette

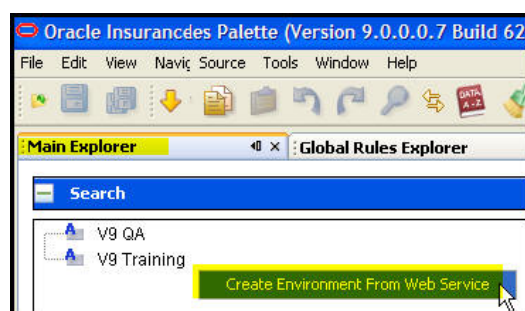
Note: You may need to create a folder called Rules Palette within C:\Program Files\Oracle if one does not already exist.

6. Launch the Rules Palette via the executable file **asgraphicruleside.exe**. This file will run the Rules Palette. To launch the application, double-click on the executable file. This executable file can be found in the following directory:

C:\Program Files\Oracle\RulesPalette\bin

STEPS TO CREATE AN ENVIRONMENT CONNECTION

1. Open the Rules Palette.
2. Click the **Main Explorer** tab.
3. Right-click inside the tab and select **Create Environment from Web Service**.



Rules Palette Right-Click Menu Option for Environment Creation

4. Type an **Environment Alias**. This should be a descriptive name for the environment that will allow you to distinguish between the environments you create. Only alphabet characters are allowed in the name. Numbers and special characters are not supported.
5. Type the **Configuration Server**. This is the hostname used to [access the Web Application Utility](#).
6. Type the **Configuration Port**. This is the port identified in the URL used to [access the Web Application Utility](#).
7. Type the **Palette User name**. The default user name is *install*.
8. Type the **Palette Password**. The default password is *install*.

9. Check the automatic log in box if you want the application to automatically log you on after environment creation is complete. This is not necessary. It is only for convenience.
10. Click **Test Configuration Server** to test your environment connection. If the connection is successful, click **Next** and advance to step 11.

Note: If you receive an error message that says your user name and password are incorrect, check your configuration server and port information as well. There are instances where errors in these fields also trigger the user name and password error.

Step 1 of Environment Creation Wizard

11. Browse to the [location of the jdbc driver files](#). (SqlServer uses the jtds.jar and DB2 uses three jar files beginning with db2_***.jar.) You will only need to specify the jar file location the first time you set-up an environment. If you create additional environments, then this Browse field will not display.
12. Type the **User ID** and **password** for the [OIPA database](#).
13. Type the **User ID** and **password** for the [IVS database](#).

Steps

1. Assign environment alias
2. **Confirm Database Credentials**

Confirm Database Credentials (2. of 2)

Environment : V9 Training Environment

Type :

Debug WebService :

OIPA Database : SQLServer2005

Enter the location for the SQLServer2005 JDBC .jar file above

Host :

Database Name :

User ID :

Password :

IVS Database

Host :

IVS Database Name :

Environment Name : Track :

User ID :

Password :

Enter database user ID and log-in. This is different from your log-in ID and password.

Enter IVS database log-in ID and password. This is different from your log-in ID and password.

Step 2 of the Environment Creation Wizard

14. Click **Test Connection** to test the connection. After both database connections are successful, click **Finish**.

LOG ON THE RULES PALETTE

If you did not choose to automatically log on after environment creation, you will need to do so now. If you are already logged in, skip to the [Create User Names and Passwords](#) section.

Steps to Log on the Rules Palette

1. Right-click on the new environment node you created and select **Log on**.
2. Type your Rules Palette user ID in the **Client ID** field. This is the same user ID you used in step one of the Environment Creation Wizard.
3. Type your password in the **Password** field. This is the same password you used in step one of the Environment Creation Wizard.
4. Click **Finish**.

Log on Window

After you log on, the Rules Palette will begin loading business rules. The bottom right corner of the application window will show the progress. If the rules have not finished loading completely, then you may not be able to open some of the folders in the Explorer tabs. Wait until the loading progress bar disappears before trying to open any folders.

CREATE USER NAMES AND PASSWORDS

There are two parts to creating user names and passwords. First, create the security groups that users will be assigned. Then, create the individual user names and passwords.

Steps to Create a new Security Group

1. Click the Admin Explorer tab and open the **Security | Application Security** folders.
2. Right-click the **Security Groups** folder and select **Create New Security Group**.
3. Select **Yes** to assign all security privileges to the new security group or select **No** to set security privileges manually.

Note: Each security group should only grant access to one primary company. Multiple primary companies cannot be viewed in OIPA. If a user needs access to multiple primary companies, then separate security groups should be created for each company and the user should have multiple login IDs.

4. Select **Finish**. The new security group will be listed in the Security Groups folder in blue. This means that it has not been checked-in yet.
5. Double-click on the name of the security group that was created. This will reveal the XML file.
6. Double-click the XML file to open it in the Configuration Area.
7. Add or remove any checked options.

Note: If No was selected in step three, but now all boxes are needed, then click the **SELECTALL** option at the top of the security record.

8. Check-in the file when finished. This will save the changes to the database.

Note: Users can be assigned to multiple groups. The privileges will overlap giving users all available privileges associated with each assigned group.

Associate Users with Security Groups

Security must be assigned to each user of the OIPA system. After the security groups are created, OIPA users are added and associated with a security group. You will need to send the user name and password information to the user once the user has been added.

Steps to Add a New User

1. Click the Admin Explorer tab and open the **Security | Application Security** folders.
2. Right-click on the **Users** folder and select **Add New**.
3. Enter the user information. This is where the user's log-in name and password are created.
4. Select the primary company the user will be working with.

5. Select the locale where the user is based. The locale determines the language that dynamic fields and transaction names will display in.
6. Select the Security Group to assign to the user.
7. Select **Finish** when all of the information has been selected. The user information will appear as an individual XML file under the User node.
8. Send information to the user so he can download and create an environment connection in the Rules Palette.

SEND INFORMATION TO RULES PALETTE USERS

The Rules Palette users are now ready to download the Rules Palette and create an environment connection. Install Instructions for users are located in the documentation library provided with the release.

You must send Rules Palette users the following information so that they can create the environment connection:

- hostname and port information (this is the hostname and port the Web Application Utility is using)
- user name and password to login to the Rules Palette (this is the user name and password you created in the steps above.)
- user name and password of the application database (this is the user name and password you entered in the Rules Palette environment properties in the [Web Application Utility](#)).
- user name and password of the IVS database if an IVS database is used (this is the user name and password you entered in the Rules Palette environment properties in the [Web Application Utility](#)).
- [location of the database driver](#)

You have now completed step three of the installation process. Refer to the documentation library included with your release for the other steps involved in the installation process.