

Primavera Risk Analysis - Using Web Services to Connect

Connecting to Primavera P6 Database

This document is an extract from the Primavera Risk Analysis help file version 8.7 SP5.

Table of Contents

| | | |
|------|---|-----|
| 1. | Setting up a connection to Primavera project database | 1 |
| 1.1. | Using Web Services to connect | 1-5 |
| 1 | Setting up a connection to Primavera project database | |
| 1.1 | Using Web Services to connect | |

Using Connection Wizard to connect to Primavera P6 database

1. Use *File* | *Close* to close any open plans.
2. *File* | *Primavera* | *Connection Wizard*.
3. Select *P6 EPPM database R8 (Web Services)* or *P6 EPPM database R8.1 or higher (Web Services)*.
4. Complete the Connection Wizard (see below for connection options).



Figure: Support for P6 v6, P6 v7, P6 EPPM database R8, P6 EPPM database R8.1 or higher and P6 Professional database R8.1 or higher.

Version 8.x connection options

Web Services connection options should be set up as follows:

Figure: The options to connect using Web Services.

Apache CXF Location

The path to the Apache CXF application.



Apache CXF Requirements

You must install the services framework Apache CXF version 2.2.7 in order to connect to P6 Web Services. You can download Apache CXF from the following Web site:

<http://archive.apache.org/dist/cxf/2.2.7>. After launching the site, you must select the download files that correspond to the windows operating system, i.e. apache-cxf-2.2.7.zip. Extract the file to a folder on your local machine.

Java JRE location

Java JRE is required and the location should be entered here.



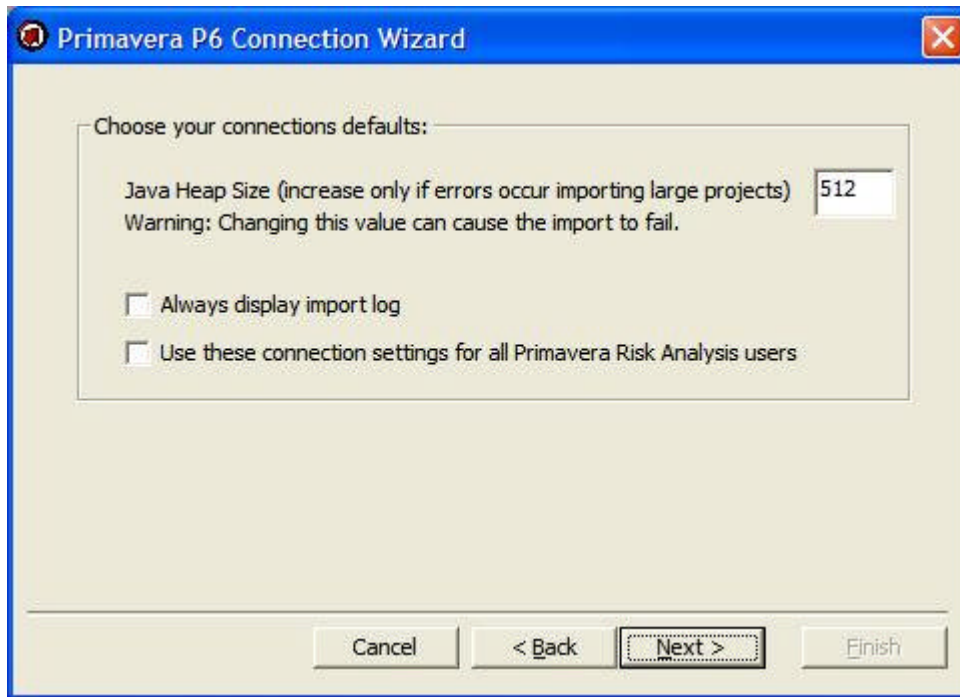
The Java JRE software is also available online.

Web Services Server and Port Number

The port number and name of the web server running Web Services.

Web Services Java Heap Size

Optional setting to define the Java Heap Size when importing large projects. By default this is set to 512Mb and should remain on this setting unless errors occur importing large projects.



Authentication Mode

The Authentication mode chosen (SAML Token Profile, Username Token Profile or Cookies) in the Primavera Risk Analysis Connection Wizard must match that in the P6 Configuration used by Web Services.

SAMLToken Profile

The P6 configuration contains a field called Issuer. This should be set to **<http://oracle.com/pgbu>** when using SAML Token Profile.

When using SAML Token Profile the Authentication Login Mode must be WebSSO or LDAP as Native is not compatible with SAML.

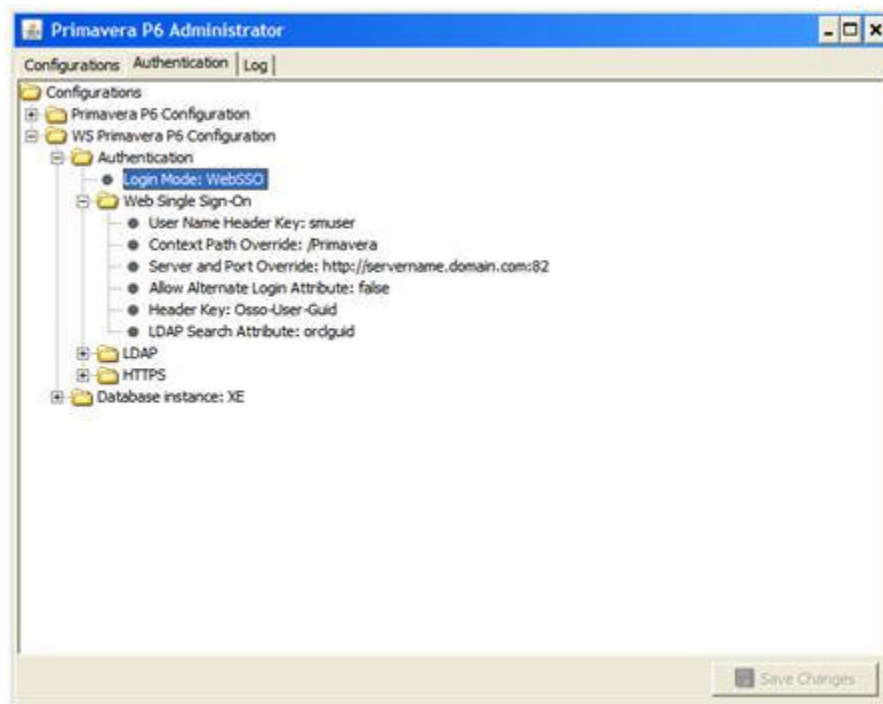


Figure: Login Mode should be set to WebSSO or LDAP when using SAML.

Cookies

If the Cookies option is chosen then Primavera Risk Analysis gives user the option to select from any

databases that are defined in the P6 Configuration being used by Web Services.

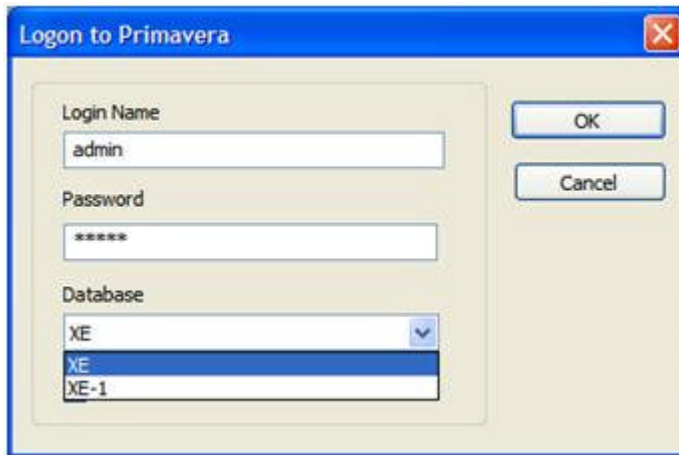


Figure: P6 logon showing choice of two database instances as defined in configuration and only available when using Cookies authentication.

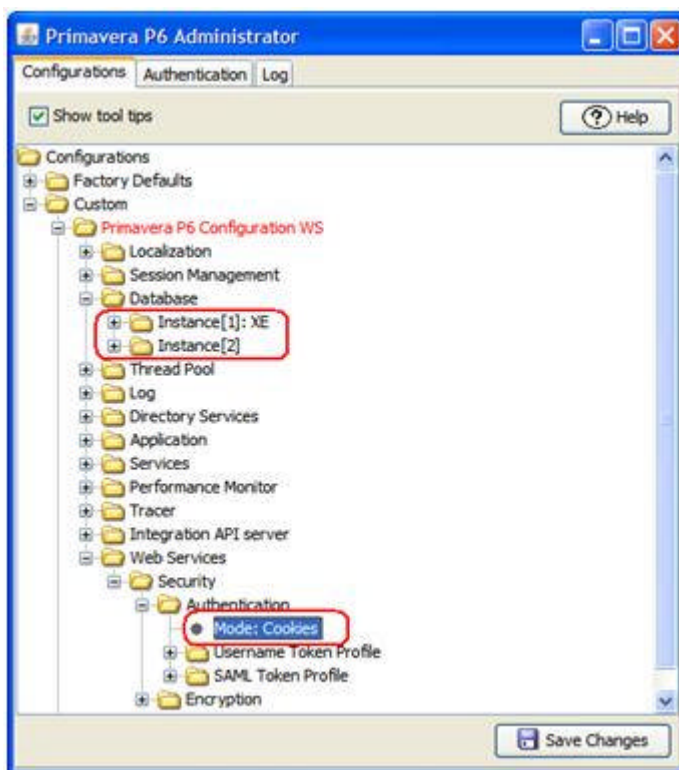


Figure: P6 Configuration with two database instances and Cookies authentication mode selected.

Username Token Profile

If Username Token is chosen then the connection defaults to the database referenced in the BREBootstrap.xml file, for SQL the reference is the database name and for Oracle it is the database name and public user login.

Security – Encryption and Message Protection

Primavera Risk Analysis does not support encryption and message protection. For the connection to work the encryption and message protection options in the P6 configuration need to be set to False (see below).

- As the Primavera Risk Analysis web services connection does not support message encryption it is recommended customers use an ssl (https) connection.

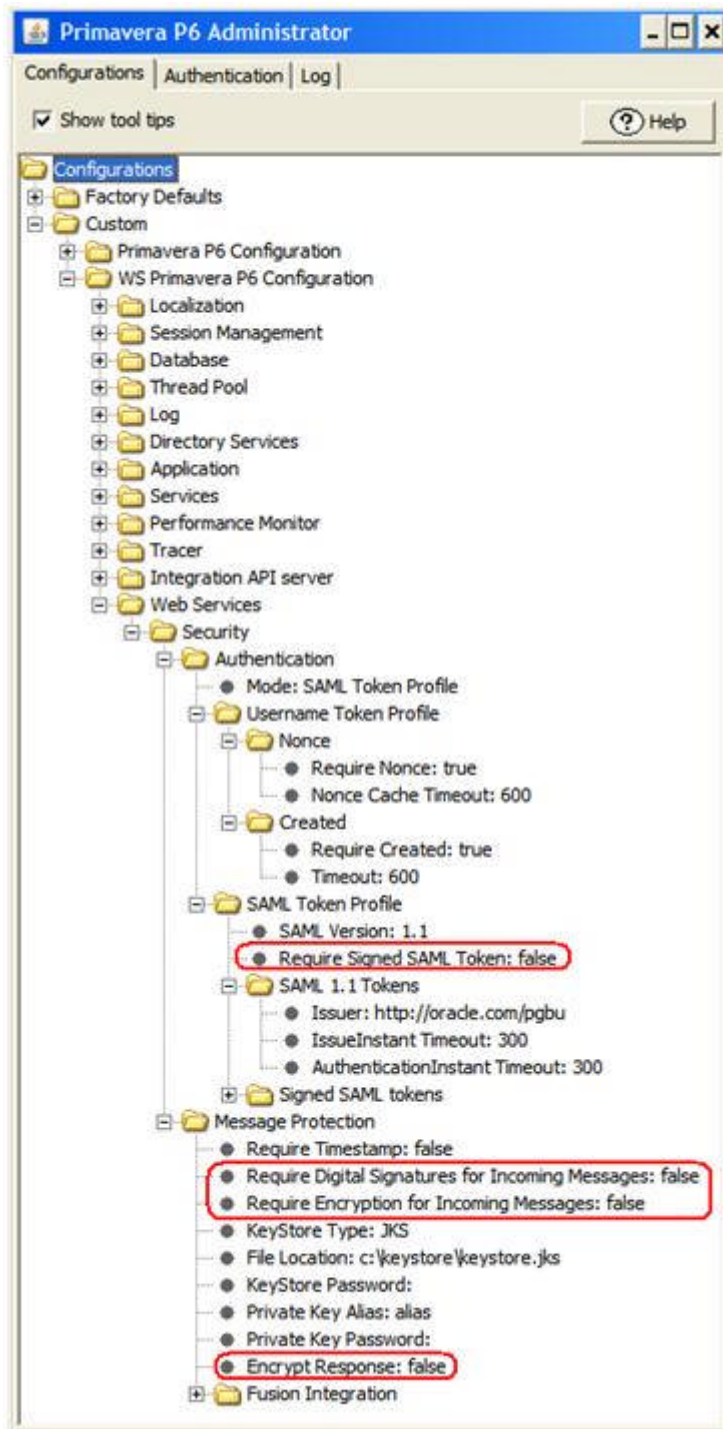


Figure: P6 configuration showing options that **MUST** be set to "false" to turn off encryption and message protection options that are not supported.

Importing Multiple projects into PRA

Each project in P6 web can have its own Risk Scoring matrix.

✎ Currently the risk register information will only be imported into Primavera Risk Analysis if when a single project is imported. If multiple projects are imported NO risk register data is imported.

✎ P6 supports "by percentage" impacts. Primavera Risk Analysis does not. When importing a project using Web Services percentages are converted to absolute values.