

仕様

仕様	詳細
電源装置のメーカーおよび モデル番号	<ul style="list-style-type: none">• Delta Electronics, Inc. Model ADP-65JH AB• FSP Group Inc. FSP065-RAC
電源装置の AC 入力	100 ~ 240 V AC、1.5 A、 50 ~ 60 Hz
電源装置の DC 出力	19 V、3.42 A
画面サイズと解像度	21.5 インチ、1920 x 1080、 60 Hz
動作高度	9,843 ft (3,000 m) (最大)
動作温度	0 °C ~ 40 °C
重量 (スタンド含む)	12.06 lb (5.47 kg)
マウント方法	背面 VESA 100 x 100 mm マウントパターン

사양

사양	세부 정보
전원 공급 장치 제조업체 및 모델 번호	<ul style="list-style-type: none">• Delta Electronics, Inc. 모델 ADP-65JH AB• FSP Group Inc. FSP065-RAC
전원 공급 장치 AC 입력	100-240 V AC, 1.5 A, 50-60 Hz
전원 공급 장치 DC 출력	19 V, 3.42 A
화면 크기 및 해상도	21.5 인치, 60 Hz 에 1920x1080
작동 고도	최대 3,000 미터 (9,843 피트)
작동 온도	0 °C ~ 40 °C
기본 중량	5.47 kg (12.06 lb)
마운트 기능	후면 VESA 100x100 mm 마운트 패턴

规格

规格	详细信息
电源生产商和型号	<ul style="list-style-type: none">• Delta Electronics, Inc. 型号: ADP-65JH AB• FSP Group Inc. FSP065-RAC
电源 AC 输入	100-240 V AC、1.5 A、50-60 Hz
电源 DC 输出	19 V、3.42 A
屏幕大小和分辨率	21.5 英寸、1920x1080 (刷新频率为 60 Hz)
工作海拔高度	9,843 英尺 (3000 米) (最大值)
工作温度	0 °C 到 40 °C
重量 (带底座)	12.06 磅 (5.47 千克)
安装能力	背面 VESA 100x100 毫米安装模式

規格

規格	詳細資訊
電源供應器製造商和型號	<ul style="list-style-type: none">• Delta Electronics, Inc. ADP-65JH AB 型號• FSP Group Inc. FSP065-RAC
電源供應器交流電輸入	100-240 V AC、1.5 A、50-60 Hz
電源供應器直流電輸出	19 V、3.42 A
螢幕大小和解析度	21.5 英吋、1920 x 1080 (60 Hz)
操作海拔	9,843 英尺 (3000 米) (最大)
操作溫度	0 °C 到 40 °C
重量 (含底座)	12.06 lb (5.47 kg)
支援的安裝模式	背面 VESA 100 x 100 mm 安裝模式

Технические характеристики

Техническая характеристика	Подробная информация
Производитель и модель блока питания	<ul style="list-style-type: none">• Delta Electronics, Inc. Модель ADP-65JH AB• FSP Group Inc. FSP065-RAC
Вход переменного тока блока питания	100-240 В, переменный ток, 1,5 А, 50-60 Гц
Выход постоянного тока блока питания	19 В, 3,42 А
Размер экрана и разрешение	21,5 дюймов, 1920x1080 при 60 Гц
Рабочая высота	3 000 м (9 843 фута), максимальное значение
Рабочая температура	От 0 °C до 40 °C
Вес (с основой)	5,47 кг (12,06 фунта)
Возможности монтажа	Способ монтажа для заднего крепления VESA 100x100 мм



The backlight lamps in the LCD display contain mercury. Recycle or dispose according to state, local, or federal laws.

Copyright © 2010, 2013 Oracle and/or its affiliates. All rights reserved.

Oracle and Java are registered trademarks of Oracle and/or its affiliates. Other names may be trademarks of their respective owners.

Intel and Intel Xeon are trademarks or registered trademarks of Intel Corporation. All SPARC trademarks are used under license and are trademarks or registered trademarks of SPARC International, Inc. AMD, Opteron, the AMD logo, and the AMD Opteron logo are trademarks or registered trademarks of Advanced Micro Devices. UNIX is a registered trademark of The Open Group.

This software and related documentation are provided under a license agreement containing restrictions on use and disclosure and are protected by intellectual property laws. Except as expressly permitted in your license agreement or allowed by law, you may not use, copy, reproduce, translate, broadcast, modify, license, transmit, distribute, exhibit, perform, publish or display any part, in any form, or by any means. Reverse engineering, disassembly, or decompilation of this software, unless required by law for interoperability, is prohibited.

The information contained herein is subject to change without notice and is not warranted to be error-free. If you find any errors, please report them to us in writing.

If this is software or related documentation that is delivered to the U.S. Government or anyone licensing it on behalf of the U.S. Government, the following notice is applicable:

U.S. GOVERNMENT END USERS: Oracle programs, including any operating system, integrated software, any programs installed on the hardware, and/or documentation, delivered to U.S. Government end users are ?commercial computer software? pursuant to the applicable Federal Acquisition Regulation and agency-specific supplemental regulations. As such, use, duplication, disclosure, modification, and adaptation of the programs, including any operating system, integrated software, any programs installed on the hardware, and/or documentation, shall be subject to license terms and license restrictions applicable to the programs. No other rights are granted to the U.S. Government.

This software or hardware is developed for general use in a variety of information management applications. It is not developed or intended for use in any inherently dangerous applications, including applications that may create a risk of personal injury. If you use this software or hardware in dangerous applications, then you shall be responsible to take all appropriate failsafe, backup, redundancy, and other measures to ensure its safe use. Oracle Corporation and its affiliates disclaim any liability for any damages caused by use of this software or hardware in dangerous applications.

This software or hardware and documentation may provide access to or information on content, products and services from third parties. Oracle Corporation and its affiliates are not responsible for and expressly disclaim all warranties of any kind with respect to third-party content, products, and services. Oracle Corporation and its affiliates will not be responsible for any loss, costs, or damages incurred due to your access to or use of third-party content, products, or services.

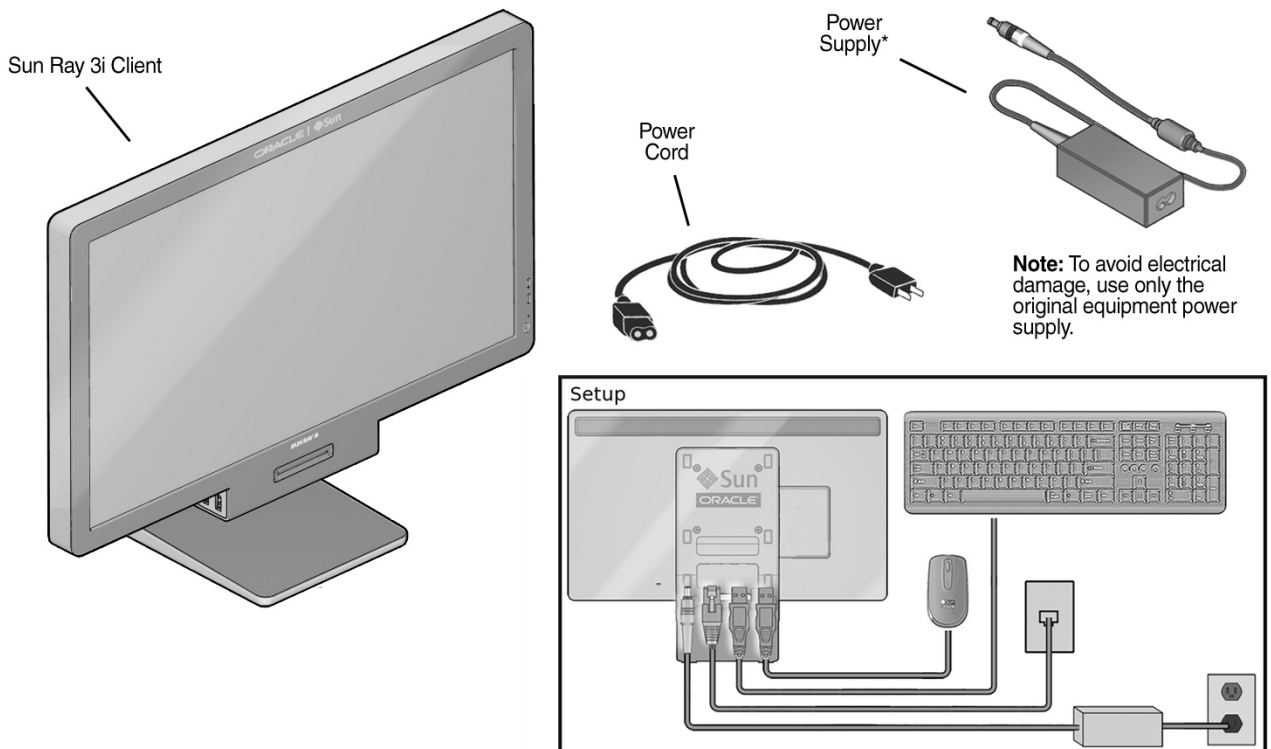


Sun Ray 3i Client Getting Started Guide

Congratulations! Your Sun Ray 3i Client combines enhanced security, increased flexibility, and extreme performance with low power consumption and maintenance costs.

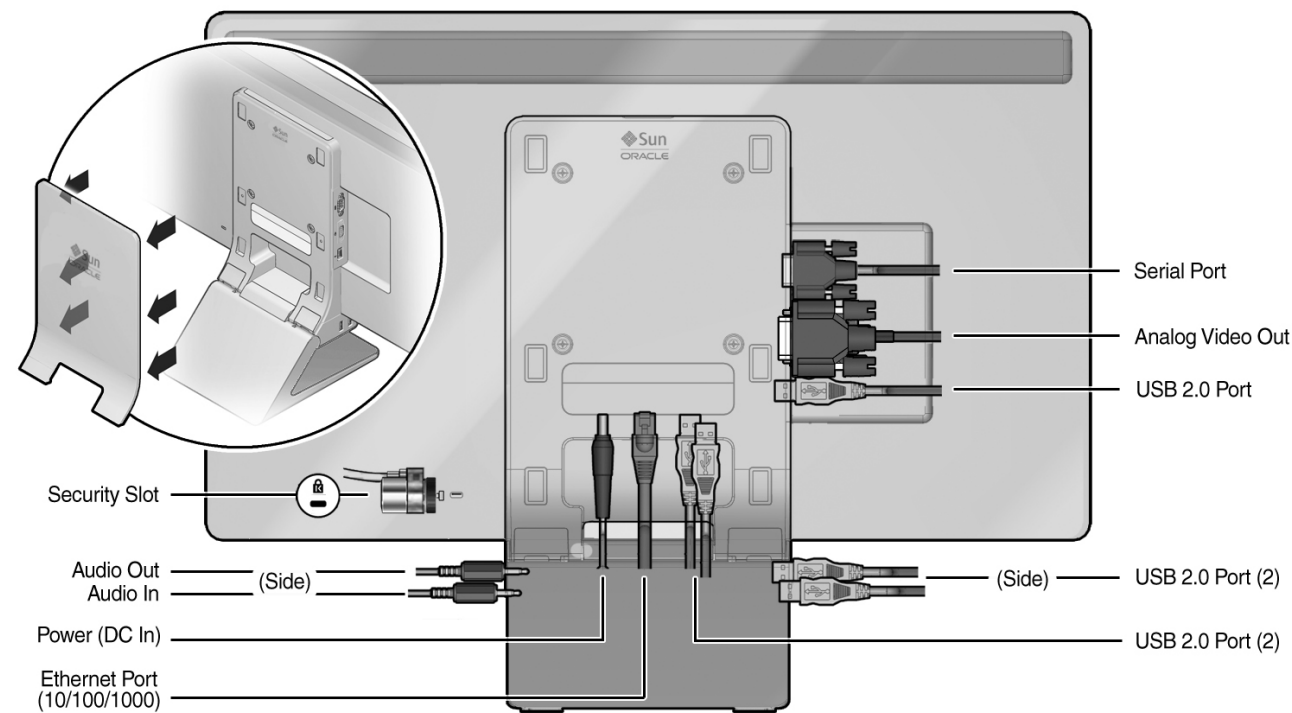
What's in the Box?

Your shipping box includes a Sun Ray 3i Client, a power supply (external universal AC/DC adapter), a power cord, and this Getting Started Guide (not shown). A keyboard and mouse are also included with an optional configuration.



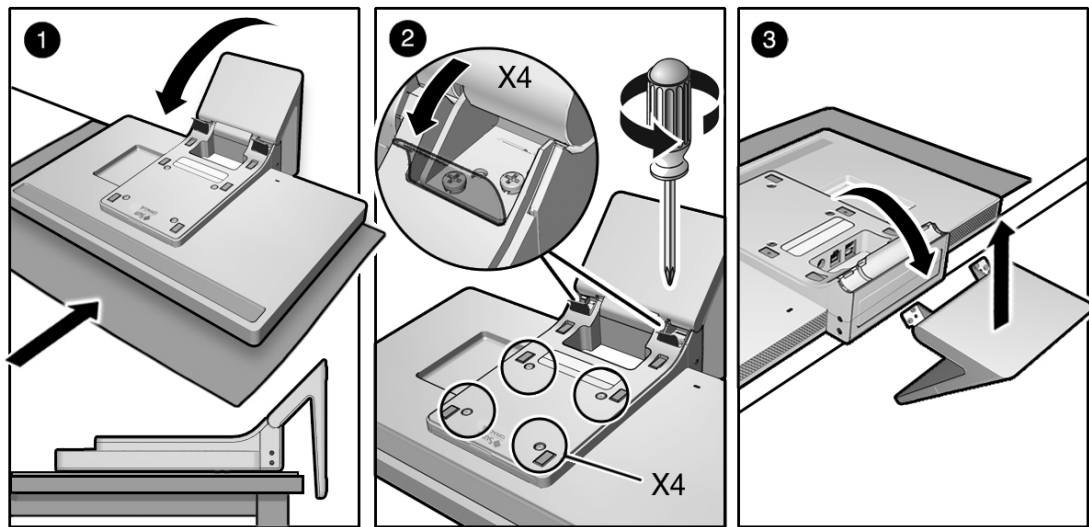
Ports and Cables

The cables are not supplied with this unit.



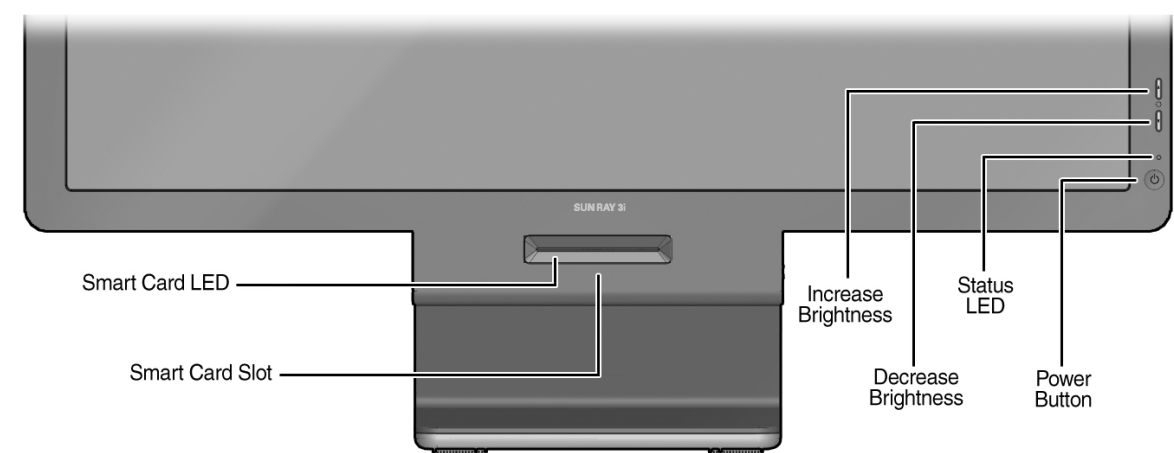
Preparations for Using VESA-Compliant Wall Mount

Note: Lay the monitor face-down on a flat surface with a cushion beneath it to protect the screen.



Operation

When the Sun Ray 3i Client is first plugged in, it powers on automatically. To save energy, the unit powers off automatically when idle for 30 minutes. To power the unit on, touch the power button or insert a smart card.



Diagnostics

Status LED	Meaning
Off	The unit is not plugged in or not powered on. Note: Powering the unit off or removing a smart card does not affect the current session.
Green	The unit is powered on and is functioning normally.
Amber	The LED lights for 2 to 3 seconds or less at power-on while the unit performs diagnostic tests. If the LED remains amber or becomes amber at any other time, the unit may be inoperable and should be reset. To reset the unit, power it off and on by touching the power button or by unplugging the power cord and plugging it in again. If the LED remains amber, continue to reset the unit two more times. If the LED remains amber after three resets, the unit is inoperable. Contact your system administrator to replace it.
Smart Card LED	Meaning
Off	No smart card is inserted or detected.
On	The smart card has been inserted correctly.

Contacting Us

- To find additional Sun Ray 3i Client documentation, see:
<http://oracle.com/technetwork/documentation/sun-ray-193669.html>
- To contact technical support for this product, see:
<http://support.oracle.com>

Specifications

Specification	Detail
Power Supply Manufacturer and Model Number	Delta Electronics, Inc. Model ADP-65JH AB FSP Group Inc. FSP065-RAC
Power Supply AC Input	100-240vac, 1.5A, 50-60Hz
Power Supply DC Output	19V, 3.42A
Screen Size and Resolution	21.5 inches, 1920x1080 at 60 Hz
Operating Altitude	9,843 feet (3000 meters) (Max)
Operating Temperature	0° to 40° C
Weight (with base)	12.06 lb (5.47 kg)
Mounting Capability	Rear VESA 100x100mm mounting pattern

Spécifications

Spécification	Détail
Fabricant du module d'alimentation et numéro de modèle	Delta Electronics, Inc. Modèle ADP-65JH AB FSP Group Inc. FSP065-RAC
Entrée en c.a. du module d'alimentation	100-240 V c.a., 1,5A, 50-60 Hz
Sortie en c.c.	19 V, 3,42 A
Taille et résolution de l'écran	21,5 pouces, 1920x1080 à 60 Hz
Altitude de fonctionnement	3 000 mètres (9 843 pieds) (Max)
Température de fonctionnement	0 °C à 40 °C
Poids (avec la base)	5,47 kg (12,06 lb)
Capacité de montage	Modèle de montage arrière VESA 100x100 mm

Specifiche

Specifica	Dettaglio
Produttore e numero di modello dell'alimentatore	Delta Electronics, Inc. Modello ADP-65JH AB FSP Group Inc. FSP065-RAC
Input alimentatore CA	100-240 V ca, 1,5 A, 50-60 Hz
Output alimentatore CC	19 V, 3,42 A
Dimensioni dello schermo e risoluzione	21,5 pollici, 1920x1080 at 60 Hz
Altitudine operativa	3.000 metri (9.843 piedi) (max)
Temperatura operativa	Da 0 °C a 40 °C
Spessore (con base)	5,47 kg (12,06 lb)
Capacità di montaggio	Percorso di montaggio posteriore VESA 100x100 mm

Especificaciones

Especificación	Detalle
Fabricante de la fuente de alimentación y número de modelo	Delta Electronics, Inc. Modelo ADP-65JH AB FSP Group Inc. FSP065-RAC
Entrada CA de fuente alimentación	100-240 V ca, 1,5 A, 50-60 Hz
Salida CC de fuente de alimentación	19 V, 3,42 A
Tamaño y resolución de pantalla	21,5 pulgadas, 1920x1080 a 60 Hz
Altitud de funcionamiento	3.000 metros (9.843 pies) (Máx)
Temperatura de funcionamiento	0 °C a 40 °C
Peso (con base)	5,47 kg (12,06 libras)
Capacidad de montaje	Patrón de montaje trasero VESA 100 x 100 mm

* Fuente De Alimentacion

Utilice solo adaptadores con las siguientes características eléctricas y que estén debidamente certificados de acuerdo a la legislación vigente. El uso de otros adaptadores podría dañar el dispositivo y anular la garantía además de provocar riesgos al usuario. Entrada AC: 100 a 240 VAC, 50 o 60 Hz, 1.5 A max. Salida DC: 19 V, 3.42 A.

Spezifikationen

Spezifikation	Technisches Detail
Netzteilhersteller und Modellnummer	Delta Electronics, Inc. Modell ADP-65JH AB FSP Group Inc. FSP065-RAC
AC-Eingang des Netzteils	100-240 V AC, 1,5A, 50-60 Hz
DC-Ausgang des Netzteils	19 V, 3,42 A
Bildschirmgröße und Auflösung	21,5 Zoll, 1920x1080 bei 60 Hz
Betriebshöhe	Max. 3000 Meter
Betriebstemperatur	0 °C bis 40 °C
Gewicht (mit Basis)	5,47 kg
Montagefähigkeit	VESA-Montagemuster 100 x 100 mm an der Rückseite

Oracle Support

Oracle Geschäftsstelle Berlin
Schloßstraße 2
D - 13507 Berlin
Telefon +49 30 43 57 95-0
Telefax +49 30 43 57 95-119

Für technische Anfragen bei gültigem Wartungsvertrag:

0180 2000 170 oder 0800 000 1659
servicecontracts_de@oracle.com