

Sun Fire X4800 Server Installation Guide for Oracle® Solaris Operating System



Part No: 821-0906
-12, June 2012

Copyright © 2010, 2012, Oracle and/or its affiliates. All rights reserved.

This software and related documentation are provided under a license agreement containing restrictions on use and disclosure and are protected by intellectual property laws. Except as expressly permitted in your license agreement or allowed by law, you may not use, copy, reproduce, translate, broadcast, modify, license, transmit, distribute, exhibit, perform, publish, or display any part, in any form, or by any means. Reverse engineering, disassembly, or decompilation of this software, unless required by law for interoperability, is prohibited.

The information contained herein is subject to change without notice and is not warranted to be error-free. If you find any errors, please report them to us in writing.

If this is software or related documentation that is delivered to the U.S. Government or anyone licensing it on behalf of the U.S. Government, the following notice is applicable:

U.S. GOVERNMENT END USERS. Oracle programs, including any operating system, integrated software, any programs installed on the hardware, and/or documentation, delivered to U.S. Government end users are "commercial computer software" pursuant to the applicable Federal Acquisition Regulation and agency-specific supplemental regulations. As such, use, duplication, disclosure, modification, and adaptation of the programs, including any operating system, integrated software, any programs installed on the hardware, and/or documentation, shall be subject to license terms and license restrictions applicable to the programs. No other rights are granted to the U.S. Government.

This software or hardware is developed for general use in a variety of information management applications. It is not developed or intended for use in any inherently dangerous applications, including applications that may create a risk of personal injury. If you use this software or hardware in dangerous applications, then you shall be responsible to take all appropriate fail-safe, backup, redundancy, and other measures to ensure its safe use. Oracle Corporation and its affiliates disclaim any liability for any damages caused by use of this software or hardware in dangerous applications.

Oracle and Java are registered trademarks of Oracle and/or its affiliates. Other names may be trademarks of their respective owners.

Intel and Intel Xeon are trademarks or registered trademarks of Intel Corporation. All SPARC trademarks are used under license and are trademarks or registered trademarks of SPARC International, Inc. AMD, Opteron, the AMD logo, and the AMD Opteron logo are trademarks or registered trademarks of Advanced Micro Devices. UNIX is a registered trademark of The Open Group.

This software or hardware and documentation may provide access to or information on content, products, and services from third parties. Oracle Corporation and its affiliates are not responsible for and expressly disclaim all warranties of any kind with respect to third-party content, products, and services. Oracle Corporation and its affiliates will not be responsible for any loss, costs, or damages incurred due to your access to or use of third-party content, products, or services.

Ce logiciel et la documentation qui l'accompagne sont protégés par les lois sur la propriété intellectuelle. Ils sont concédés sous licence et soumis à des restrictions d'utilisation et de divulgation. Sauf disposition de votre contrat de licence ou de la loi, vous ne pouvez pas copier, reproduire, traduire, diffuser, modifier, breveter, transmettre, distribuer, exposer, exécuter, publier ou afficher le logiciel, même partiellement, sous quelque forme et par quelque procédé que ce soit. Par ailleurs, il est interdit de procéder à toute ingénierie inverse du logiciel, de le désassembler ou de le décompiler, excepté à des fins d'interopérabilité avec des logiciels tiers ou tel que prescrit par la loi.

Les informations fournies dans ce document sont susceptibles de modification sans préavis. Par ailleurs, Oracle Corporation ne garantit pas qu'elles soient exemptes d'erreurs et vous invite, le cas échéant, à lui en faire part par écrit.

Si ce logiciel, ou la documentation qui l'accompagne, est concédé sous licence au Gouvernement des Etats-Unis, ou à toute entité qui délivre la licence de ce logiciel ou l'utilise pour le compte du Gouvernement des Etats-Unis, la notice suivante s'applique:

U.S. GOVERNMENT END USERS. Oracle programs, including any operating system, integrated software, any programs installed on the hardware, and/or documentation, delivered to U.S. Government end users are "commercial computer software" pursuant to the applicable Federal Acquisition Regulation and agency-specific supplemental regulations. As such, use, duplication, disclosure, modification, and adaptation of the programs, including any operating system, integrated software, any programs installed on the hardware, and/or documentation, shall be subject to license terms and license restrictions applicable to the programs. No other rights are granted to the U.S. Government.

Ce logiciel ou matériel a été développé pour un usage général dans le cadre d'applications de gestion des informations. Ce logiciel ou matériel n'est destiné à être utilisé dans des applications à risque, notamment dans des applications pouvant causer des dommages corporels. Si vous utilisez ce logiciel ou matériel dans le cadre d'applications dangereuses, il est de votre responsabilité de prendre toutes les mesures de secours, de sauvegarde, de redondance et autres mesures nécessaires à son utilisation dans des conditions optimales de sécurité. Oracle Corporation et ses affiliés déclinent toute responsabilité quant aux dommages causés par l'utilisation de ce logiciel ou matériel pour ce type d'applications.

Oracle et Java sont des marques déposées d'Oracle Corporation et/ou de ses affiliés. Tout autre nom mentionné peut correspondre à des marques appartenant à d'autres propriétaires qu'Oracle.

Intel et Intel Xeon sont des marques ou des marques déposées d'Intel Corporation. Toutes les marques SPARC sont utilisées sous licence et sont des marques ou des marques déposées de SPARC International, Inc. AMD, Opteron, le logo AMD et le logo AMD Opteron sont des marques ou des marques déposées d'Advanced Micro Devices. UNIX est une marque déposée d'The Open Group.

Ce logiciel ou matériel et la documentation qui l'accompagne peuvent fournir des informations ou des liens donnant accès à des contenus, des produits et des services émanant de tiers. Oracle Corporation et ses affiliés déclinent toute responsabilité ou garantie expresse quant aux contenus, produits ou services émanant de tiers. En aucun cas, Oracle Corporation et ses affiliés ne sauraient être tenus pour responsables des pertes subies, des coûts occasionnés ou des dommages causés par l'accès à des contenus, produits ou services tiers, ou à leur utilisation.

Contents

Using This Documentation	5
Product Information Web Site	5
Documentation and Feedback	5
About This Documentation (PDF and HTML)	6
Contributors	6
Change History	6
Introduction to Oracle Solaris OS Installation	7
Preliminary Tasks Before Installing An OS	9
How to Erase Your Boot Hard Disk	9
Creating a Virtual Disk	11
How to Create a Virtual Disk	11
How to Set the Boot Drive	25
Solaris OS Installation Tasks	27
Choosing an Installation Method	28
Obtaining Solaris 10 Documentation	31
Obtaining Solaris 11 Express Documentation	31
Identifying Logical and Physical Network Interface Names for Solaris 10 OS Installation	32

Using This Documentation

This section describes related documentation, submitting feedback, and a document change history.

- “Product Information Web Site” on page 5
- “Documentation and Feedback” on page 5
- “About This Documentation (PDF and HTML)” on page 6
- “Contributors” on page 6
- “Change History” on page 6

Product Information Web Site

For information about the Sun x86 servers, go to <http://www.oracle.com/technetwork/server-storage/sun-x86/overview/index.html>.

For software and firmware downloads for your x86 server product, go to <http://www.oracle.com/technetwork/server-storage/sun-x86/downloads/index.html> page and click on your server model.

Documentation and Feedback

Documentation	Link
All Oracle products	http://www.oracle.com/documentation
Sun Fire X4800 server	http://download.oracle.com/docs/cd/E19140-01/index.html
Oracle ILOM 3.0	http://www.oracle.com/technetwork/documentation/sys-mgmt-networking-190072.html#ilom

Provide feedback on this documentation at: <http://www.oracle.com/goto/docfeedback>.

About This Documentation (PDF and HTML)

This documentation set is available in both PDF and HTML. The information is presented in topic-based format (similar to online help) and therefore does not include chapters, appendixes, or section numbering.

A PDF that includes all information on a particular topic subject (such as hardware installation or product notes) can be downloaded by clicking on the PDF button in the upper left corner of the page.

Contributors

Primary Authors: Michael Bechler, Ralph Woodley, Ray Angelo, Cynthia Chin-Lee.

Change History

The following changes have been made to the documentation set.

- April 2010 – Installation Guide released.
- June 2010 – Installation Guide and Getting Started Guide re-released.
- July 2010 – Initial release of other documents.
- August 2010 – Product Notes and Service Manual re-released. ESX Installation Guide added.
- October 2010 – Product Notes re-released.
- December 2010 – Product Notes re-released.
- March 2011 – Documents re-released for SW1.2 including the Installation Guide, the Product Notes, the Linux Installation Guide, the Oracle Solaris Installation Guide, the Windows Installation Guide, and the Service Manual.
- July 2011 – Product Notes and Service Manual re-released.
- January 2012 – Product Notes updated for SW1.4.
- June 2012 – Product Notes, Oracle VM Installation Guide, Oracle Solaris Installation Guide, Oracle ILOM 3.0 Supplement, and the Diagnostics Manual re-released.

Introduction to Oracle Solaris OS Installation

This document provides information on installing the Oracle Solaris OS on your server and points to the Oracle Solaris documentation for installation. It provides the following topics.

Your server supports the 64-bit versions of Solaris 10 10/09, Solaris 10 8/11, and Solaris 11 Express.

Description	Link
Preliminary tasks to be done before installing the Solaris OS.	“Preliminary Tasks Before Installing An OS” on page 9
How to erase an existing volume on the boot disk.	“How to Erase Your Boot Hard Disk” on page 9
How to create a required virtual drive volume on the boot disk.	“Creating a Virtual Disk” on page 11
Obtain an overview of OS installation tasks.	“Solaris OS Installation Tasks” on page 27
Decide on an installation method.	“Choosing an Installation Method” on page 28
Find out where to get Solaris OS installation documentation.	“Obtaining Solaris 10 Documentation” on page 31
Identify your logical and physical network ports.	“Identifying Logical and Physical Network Interface Names for Solaris 10 OS Installation” on page 32

Preliminary Tasks Before Installing An OS

Certain tasks must be done before you can install an operating system, depending on whether there is an OS already on your boot drive, or your drives are new with no previous partitions.

- If your server's boot hard disk has an operating system installed other than Solaris, you might need to erase it in order to prepare it for Solaris. See [“How to Erase Your Boot Hard Disk” on page 9](#).
- If your server did not come with preinstalled Solaris, you need to create a logical drive using the server HBA software, otherwise, the Solaris installation program will not be able to see the server's disk drives. See [“Creating a Virtual Disk” on page 11](#)
- If you are going to install your OS on a disk that is part of a RAID array, you must configure the RAID array before installing your OS. See your server's disk management documentation collection for details. See [“Creating a Virtual Disk” on page 11](#).

▼ How to Erase Your Boot Hard Disk

If your server's boot disk has a pre-existing operating system you no longer want, you can erase it as described in this section.

Before You Begin Obtain a copy of the Tools and Drivers CD before starting this procedure.



Caution – This procedure erases all data from the hard drive. Back up any data you wish to save before starting this procedure.

1 Back up any data on the hard drive that you want to save.

2 Insert the Tools and Drivers CD into the server's CD/DVD drive.

If your server does not have a CD/DVD drive, use the remote console (JavaRConsole). See [“Connecting to the System Console” in Sun Fire X4800 Server Installation Guide](#).

3 Boot the system from the Tools and Drivers CD.

The tools and drivers main menu appears.

4 Select Erase Primary Boot Hard Disk from the main menu.

This erases all partitions currently on the primary hard drive except for the diagnostic partition. If the diagnostic partition is present, it is not erased.

Next Steps Proceed to [“Creating a Virtual Disk” on page 11.](#)

Creating a Virtual Disk

Before attempting to install the operating system, you must create a virtual disk on your server to make available space accessible for the image download. The download erases the contents of the disk.

Virtual disks can be created from the LSI firmware for downloading the operating system. The LSI firmware can only be reached during boot-up of the server. Before Windows is launched and when the LSI banner is shown, you can enter the Control-H key combination to access the LSI interface.

Note – Virtual disks can also be created from the MegaRAID software (which is installed through the supplemental drivers on the Tools and Drivers DVD), but should not be used for installing the operating system.

See [“How to Create a Virtual Disk” on page 11](#).

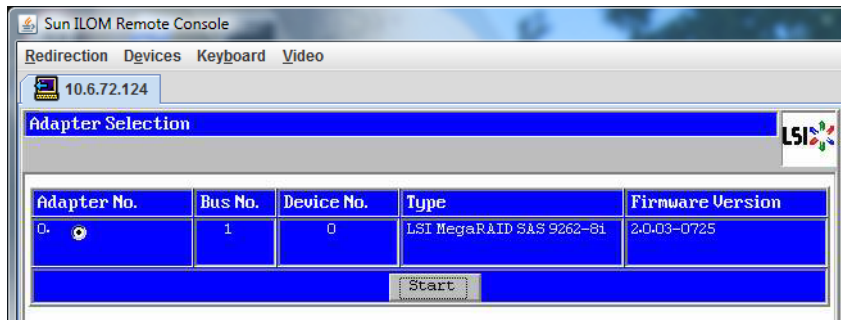
▼ How to Create a Virtual Disk

- 1 **Login to the server using the IP address of the service processor (SP) module.**
- 2 **In the GUI window, click the Remote Control tab to launch ILOM Remote Control.**
- 3 **Select the KVMS tab.**
- 4 **Under Mouse Mode, select Relative, then click Save.**

Note – The Relative option enables the mouse to move from window to window while you are in Remote Console. At the end of this procedure, you are asked to change this mouse setting to Absolute.

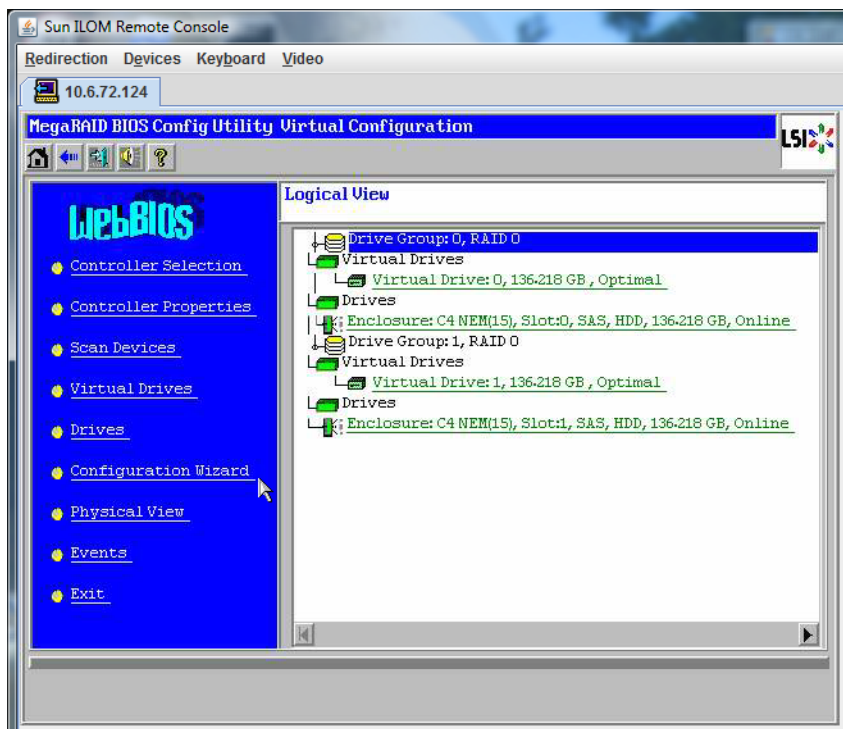
- 5 **Click the Redirection tab. In the Redirection screen, click on Launch Remote Console.**
This launches the ILOM 3.0 remote console window.

- 6 From the Devices menu, select Mouse to enable the mouse.
- 7 Reboot your system and wait for the LSI banner. When the devices appear in the banner page, use the Control-H key combination.
- 8 In the Adapter Selection screen, click Start.

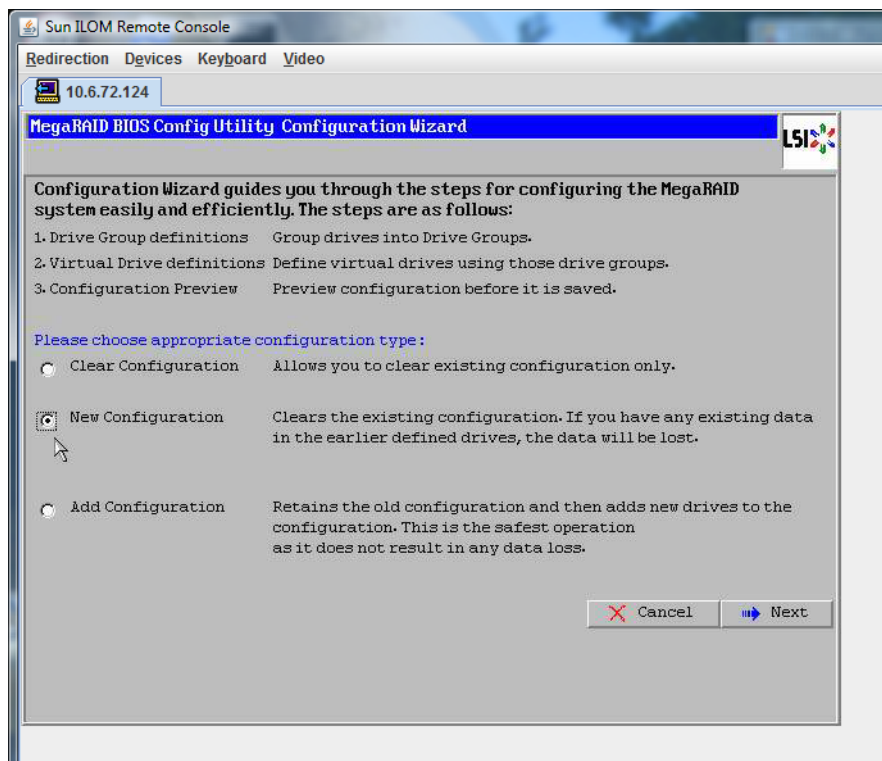


The MegaRaid BIOS Config Utility Virtual Configuration screen opens.

- 9 In the MegaRAID BIOS Config Utility Virtual Configuration screen, select Configuration Wizard.

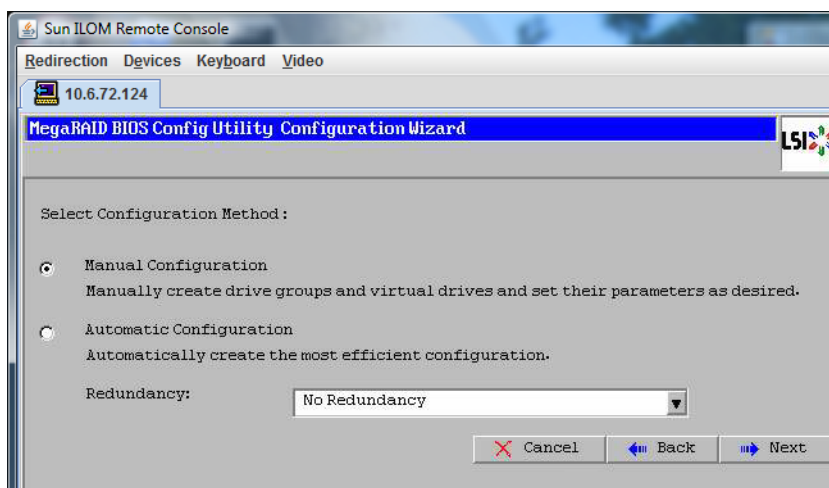


- 10 In the Configuration Wizard screen, select New Configuration, then click Next.

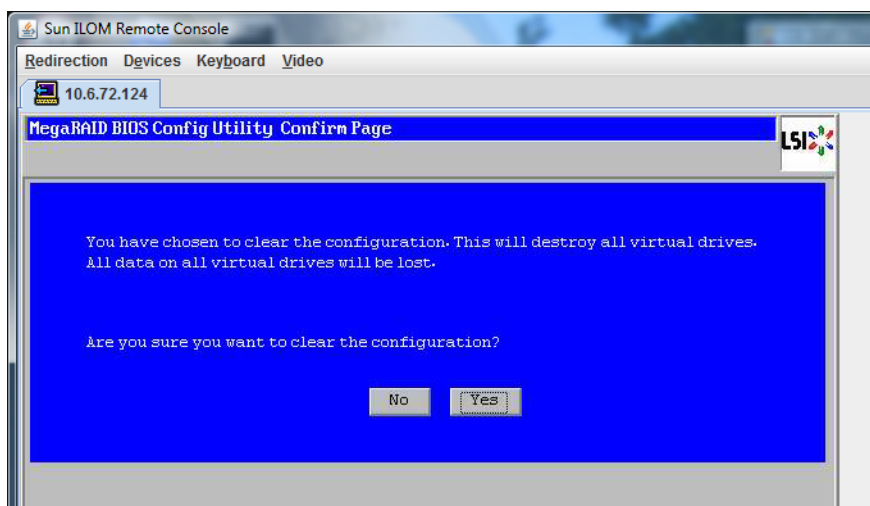


11 Select Manual Configuration.

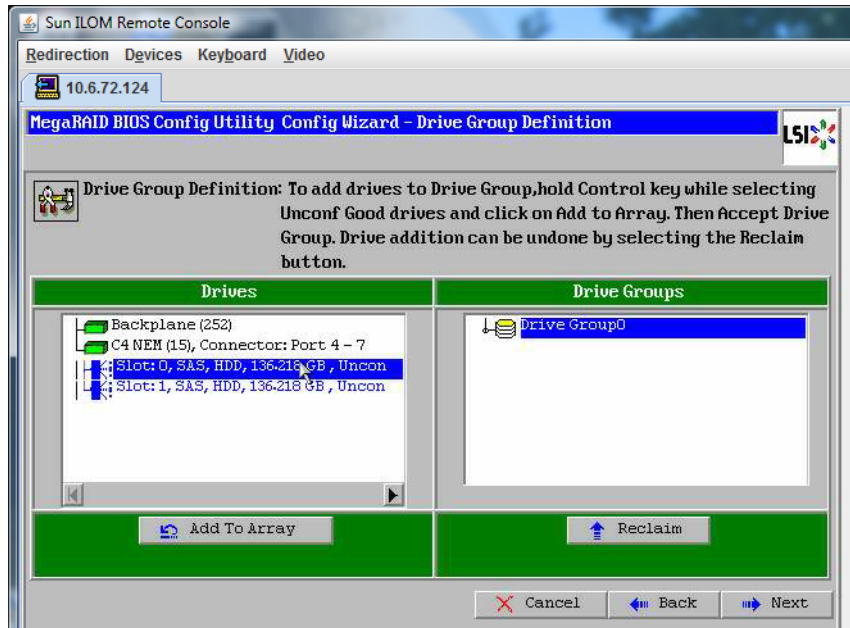
Automatic Configuration creates a single virtual drive that includes all the hard drives on your system. More than one drive is configured as a striped set (RAID0) and appears as a single virtual drive of combined storage space. This might not be desirable as there can be multiple points of failure. That is, if one drive fails, then the system does not boot. You must remove all the drives except one. Alternatively, you can use Manual Configuration to create the virtual drive using only one hard drive.



12 If a confirmation window appears, click Yes.

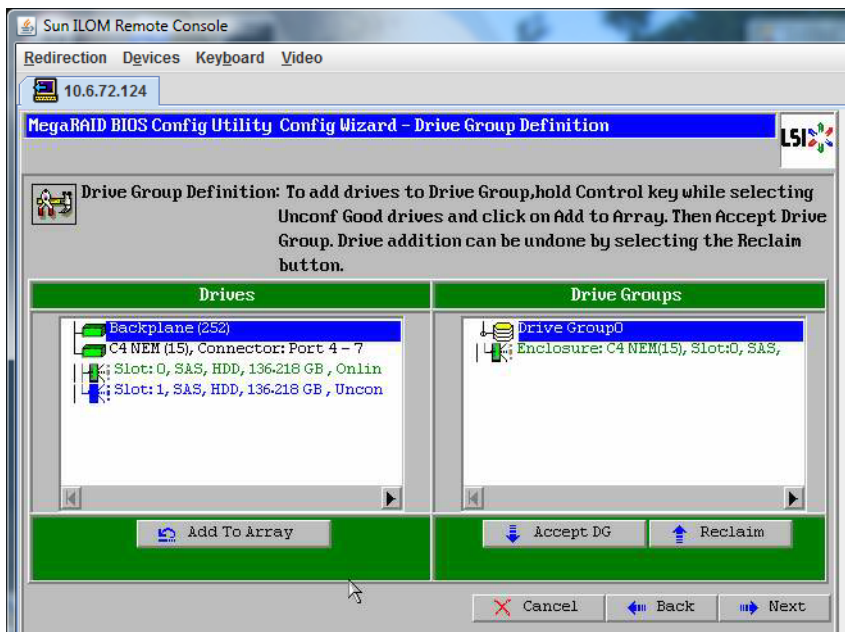


- 13 When the MegaRAID BIOS Config Utility Config Wizard – Drive Group Definition screen appears, you see the drives in the system and the drive groups. Select the drive you want and click Add To Array.



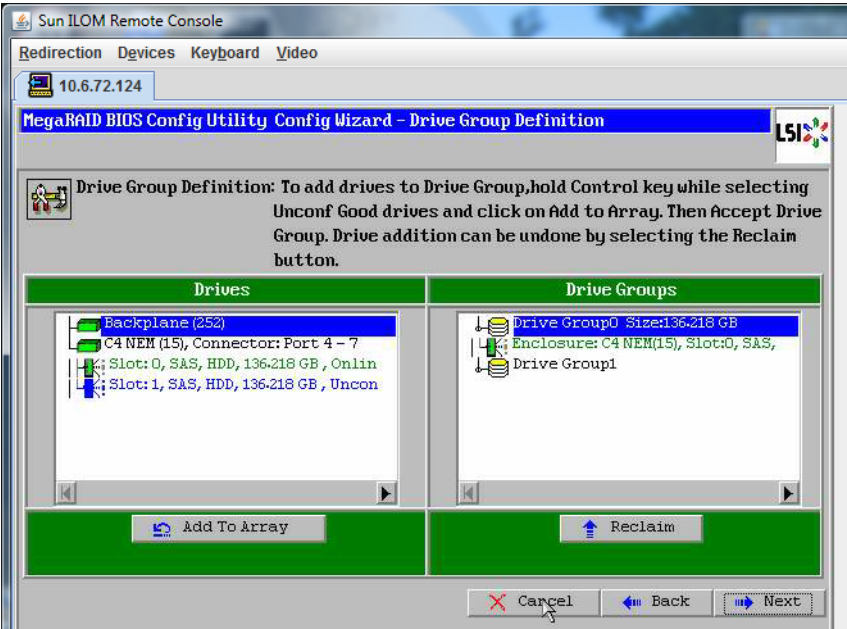
14 Click Accept DG to create the drive group.

You can now view Drive Group0.

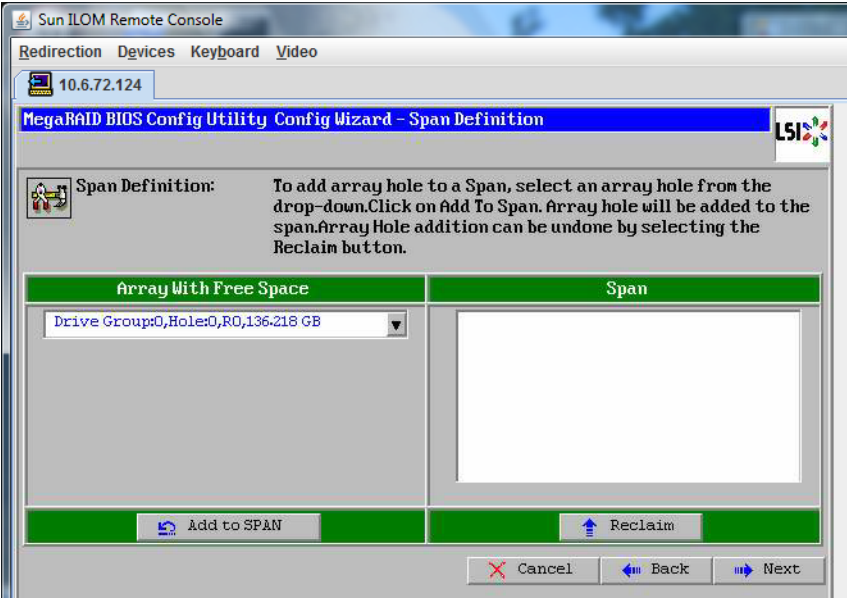


15 Click Next.

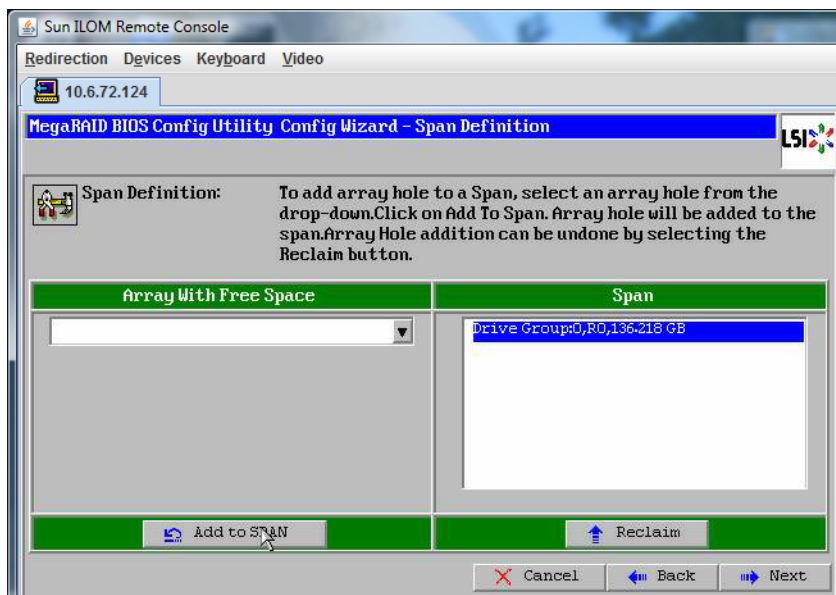
Note – You can undo the drive group selection by clicking the Reclaim button.



16 The drive group appears in the Span Definition window. Click Add to SPAN.

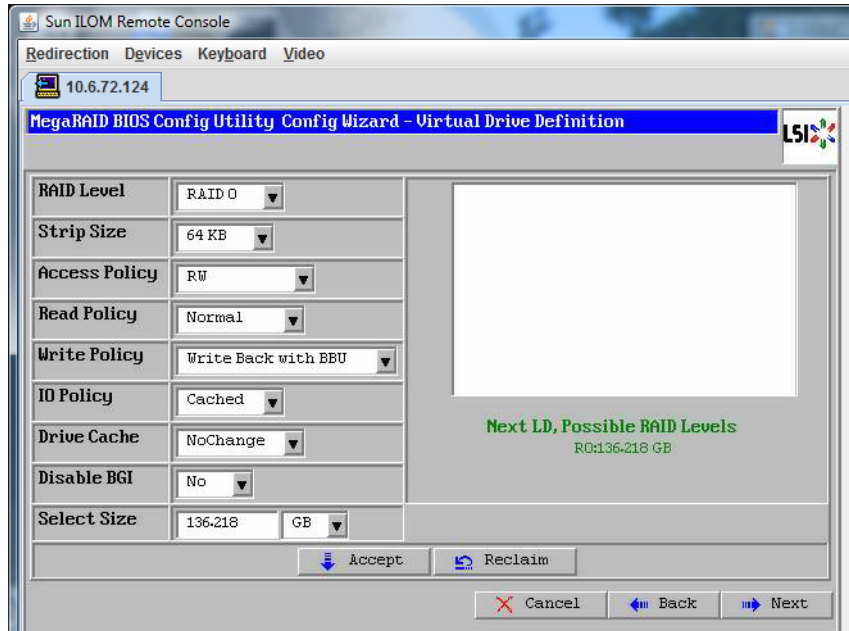


- 17 The drive group appears in the span. Click Next.

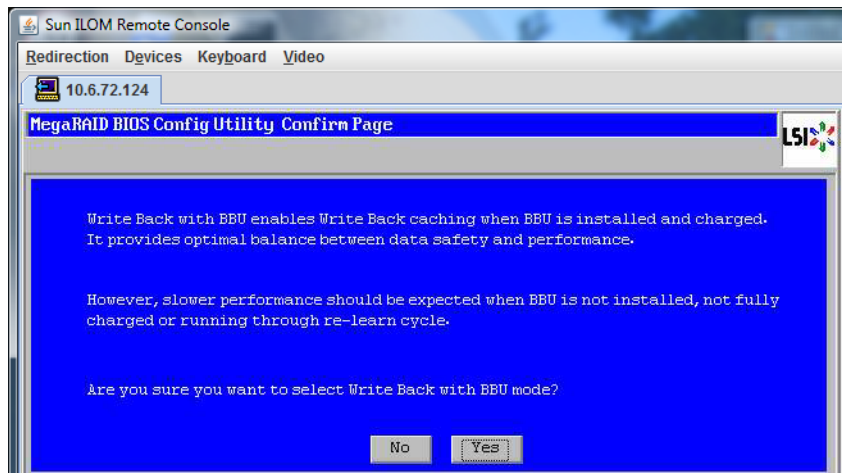


- 18 The Virtual Drive Definition screen appears. Set the RAID level and configurations you want for your virtual drive and click Accept.

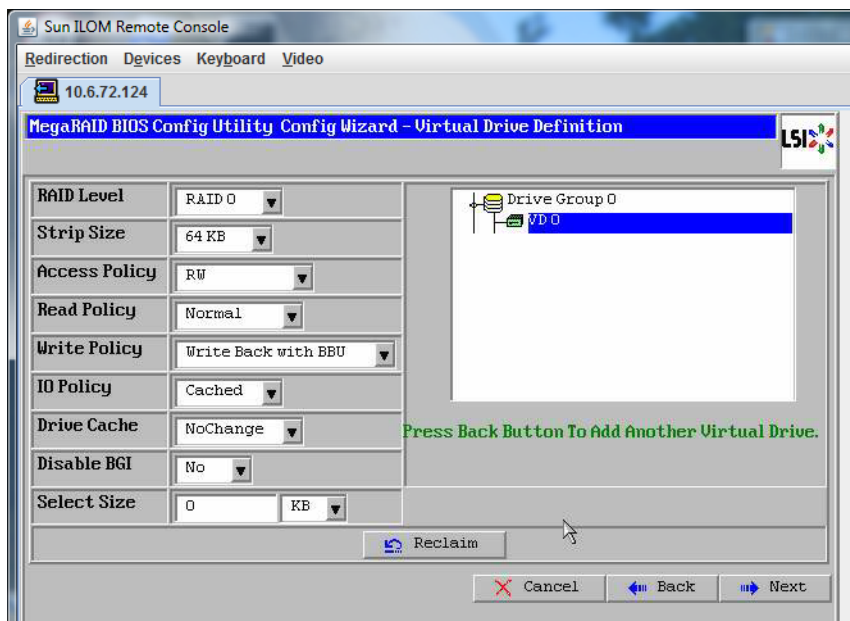
For more information about configuring RAID, refer to your server's Disk Management documentation.



- 19 When system prompts you to confirm Write Back with BBU mode, click Yes.

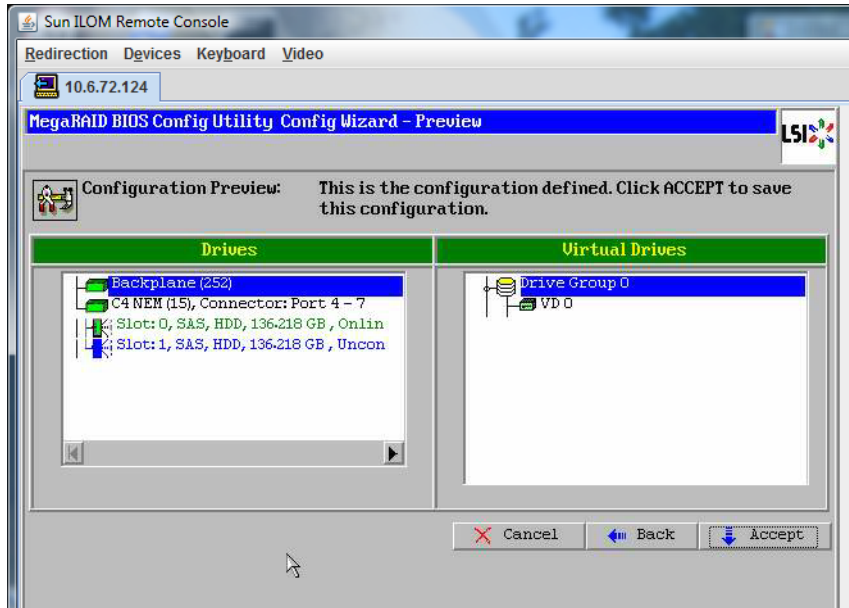


20 At the Config Wizard window, click Next.

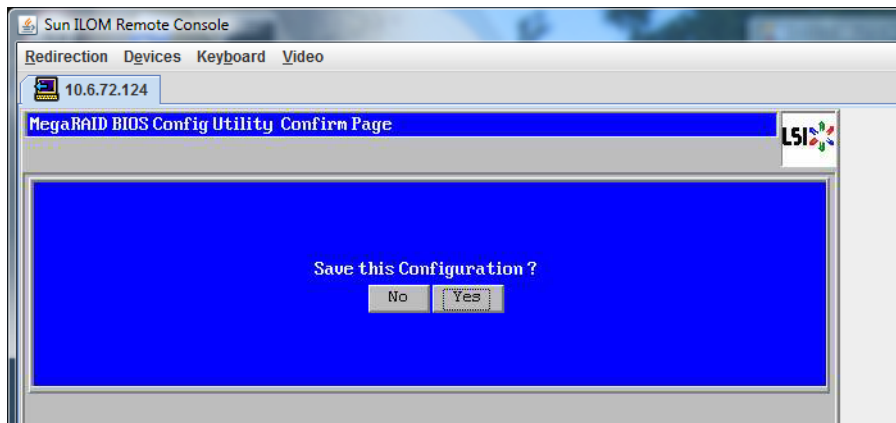


21 The Preview screen appears. Note that the virtual drive includes Drive Group 0.

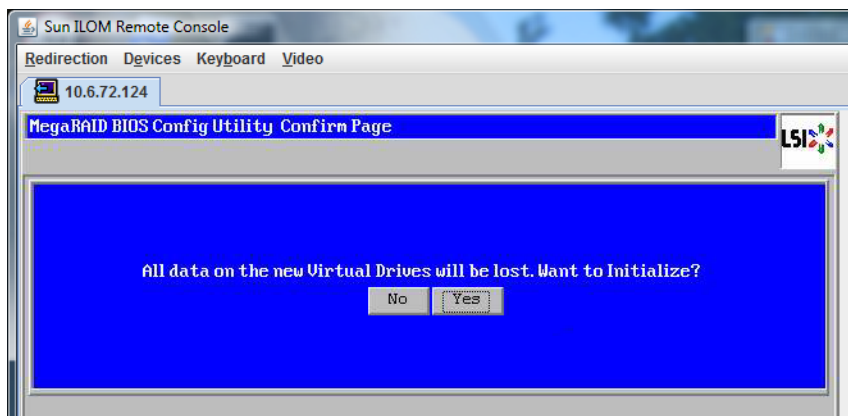
This graphic shows a single virtual drive using the Manual Configuration option:



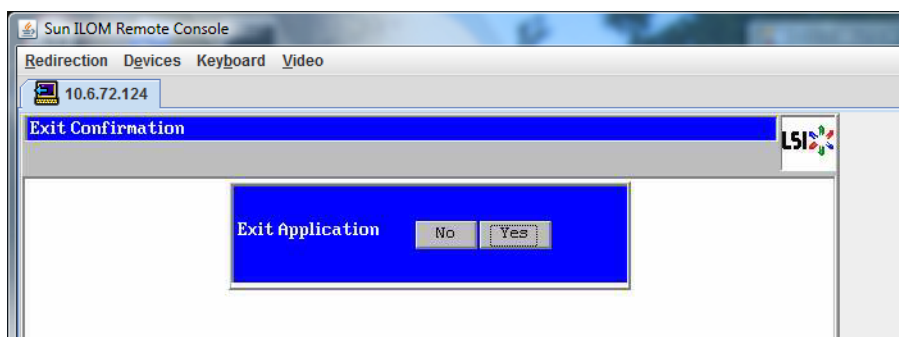
22 Save the Configuration.



- 23 Select Yes to the prompt: All data on Virtual Drives will be lost. Want to Initialize?



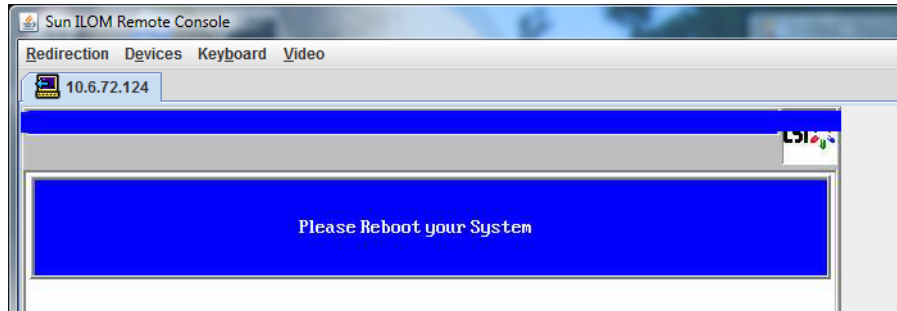
- 24 Click Yes to exit.



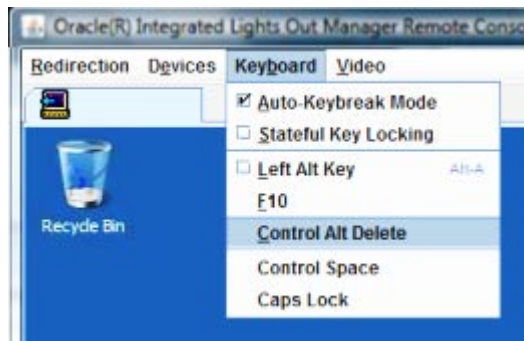
- 25 When you see Please Reboot Your System, use the Alt-B key combination to view the keyboard pull-down menu.



Caution – You must do this step; otherwise, the next step using Control Alt Delete reboots your local machine.



- 26 Use the arrow keys to select Control Alt Delete in the menu to reboot the remote system. Press Enter.

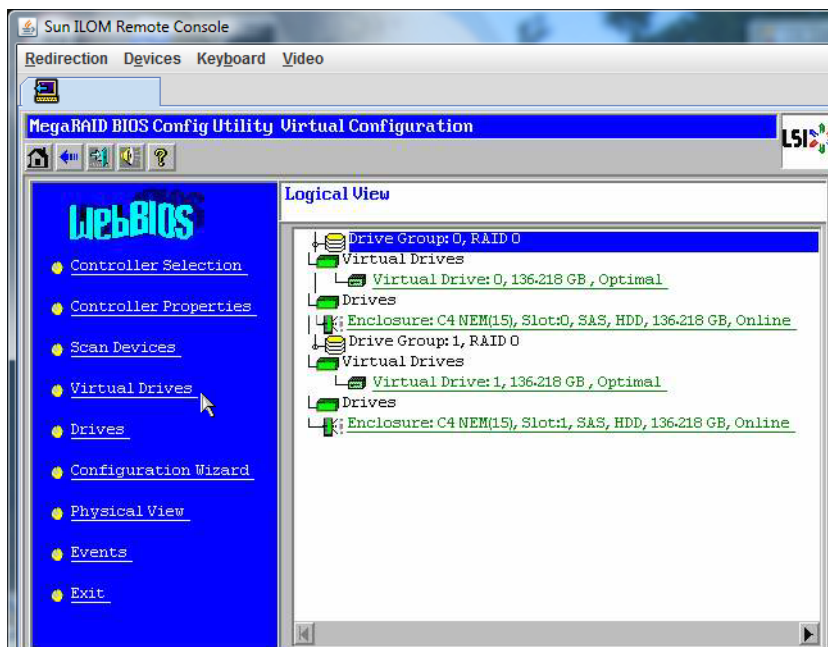


- 27 Go back and set the mouse mode to Absolute:
- In the Remote Control screen, select the KVMS tab.
 - Under Mouse Mode, select the Absolute.
 - Click Save.

▼ How to Set the Boot Drive

After creating a virtual drive you need to set the drive to be the boot drive if you are going to install your operating system on it.

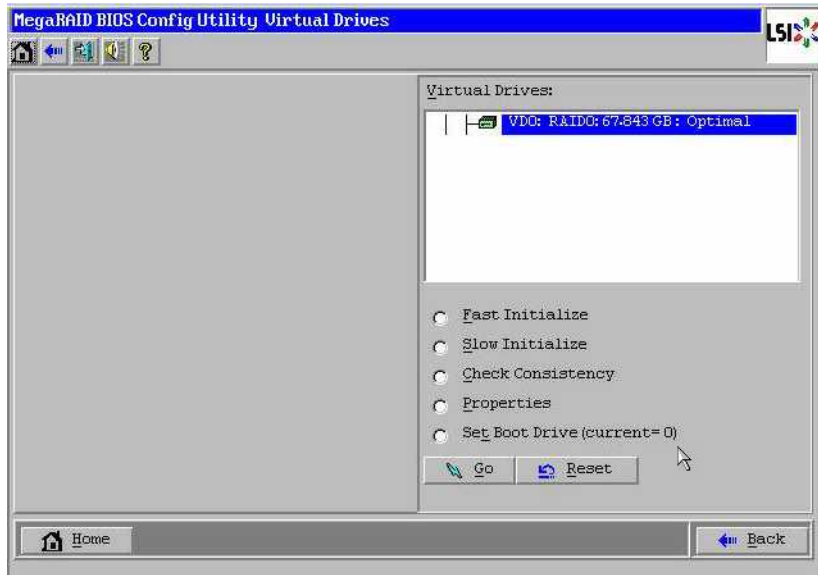
- 1 Go to the Configuration Wizard screen and select Virtual Drives.



The MegaRAID BIOS Config Utility Virtual Drives Configuration screen appears.

2 Check to see if the Set_Boot Drive (current=none) is listed as one of the options:

If the Set_Boot Drive (current=none) option is listed, then the boot drive has not been set.



3 Click Set_Boot Drive (current=none), then click Go.

Solaris OS Installation Tasks

The following table provides a task map for installing Solaris.

Task	Description	Instructions
Set up your server.	Install your server hardware and configure the service processor.	<i>Sun Fire X4800 Server Installation Guide</i>
Review the <i>Sun Fire X4800 Server Product Notes</i> .	The Product Notes contain late-breaking news about the Solaris OS software and patches.	<i>Sun Fire X4800 Server Product Notes</i>
Choose an installation method.	Choose an installation method and locate the installation instructions.	“Choosing an Installation Method” on page 28
Locate the Solaris OS installation documentation.	The Solaris OS documentation included with your software contains most of what you need to know about installation.	Refer to “Obtaining Solaris 10 Documentation” on page 31 or “Obtaining Solaris 11 Express Documentation” on page 31
Identify the logical names and the physical names of each network interface.	During the OS installation, you need to provide the logical names (assigned by the OS) and the physical name (MAC address) of each network interface.	“Identifying Logical and Physical Network Interface Names for Solaris 10 OS Installation” on page 32
Install any required OS patches.	Check Sunsolve for the latest patches for your OS. Note – In order to use Solaris FMA (Fault Management Architecture) with Solaris 10 10/09 OS, you must install patch 142901–09 (or later) after the installation of the OS.	http://support.oracle.com

Choosing an Installation Method



Caution – The Sun Fire X4800 server supports only 64-bit Solaris installations. 32-bit installations are not supported.

Your server supports the following Solaris OS installation methods:

- Boot from the preinstalled Solaris 10 10/09 OS image on the hard drive as described in [“Setting Up the Preinstalled Solaris Operating System” in Sun Fire X4800 Server Installation Guide](#).

There is no preinstalled image for Solaris 11 Express.

- Install on one server from DVD or CD-ROM media interactively with the Solaris installation program. Solaris 11 Express can also be installed from a USB device.

For Solaris 10, the Solaris installation program on the Solaris 10 OS DVD or CD can be run with a graphical user interface (GUI) or as an interactive text installer. The Solaris Device Configuration Assistant is included in the Solaris Installation Program.

For Solaris 11 Express, use the Solaris installation program on the LiveCD or a LiveUSB media. These can be run with a GUI or with an interactive user interface.

- Install on one server or several servers over the network with Preboot Execution Environment (PXE) technology and the following installation methods:

For Solaris 10:

- Solaris installation program over the network from remote DVD or CD images
- JumpStart installation
- Installation using a serial console

For Solaris 11 Express:

- Automated install
- Automated install using a custom manifest
- Serial console

Note – The Solaris OS provides additional programs for installation, such as booting over a wide area network (WAN), but your server supports only those methods listed in this document.

The following table describes installation methods available for installing the Solaris OS.

Method	Description	Instructions
Boot from the preinstalled image.	Depending on your configuration, a Solaris OS image might be preinstalled on a hard drive.	Sun Fire X4800 Server Installation Guide
Install from DVD or CD-ROM media. Solaris 11 Express can also be installed from USB media using a special .usb image file.	Use the Solaris Installation Program on the CD or DVD media to install one server interactively.	Follow the instructions for x86 installation. <ul style="list-style-type: none"> For Solaris 10, refer to the <i>Solaris 10 10/09 Installation Guide: Basic Installations</i> or the <i>Solaris 10 9/10 Installation Guide: Basic Installations</i> in the the Solaris 10 Operating System collection. For Solaris 11 Express, refer to <i>Getting Started With Oracle Solaris 11 Express</i> in the Oracle Solaris 11 Express Information Library.
Install from the network by using PXE. Caution – When you install the Solaris 10 OS from a PXE server, the netboot environment must be configured to use the 64-bit kernel. You can do this by changing the PXE boot menu to include <i>amd64</i> on the kernel and module lines. For details, refer to the <i>Solaris 10 10/09 Installation Guide: Custom JumpStart and Advanced Installations</i> or the <i>Solaris 10 9/10 Installation Guide: Custom JumpStart and Advanced Installations</i> in the Solaris 10 Operating System documentation collection .	You need to use PXE to install the Solaris OS over the network when there is a need for automated installation. To boot over the network by using PXE, you need to set up an installation server and a DHCP server, and configure the BIOS on each server to boot from the network.	Follow the instructions for an x86 PXE installation. <ul style="list-style-type: none"> For Solaris 10, refer to the <i>Solaris 10 (9/10 or 10/09) Installation Guide: Custom JumpStart and Advanced Installations</i> in the Solaris 10 Operating System documentation collection. For Solaris 11 Express, refer to the <i>Oracle Solaris 11 Express Automated Installer Guide</i> in the Oracle Solaris 11 Express Information Library.

Method	Description	Instructions
	Use a serial console to install the Solaris OS in a PXE-based network installation.	<p>Follow the instructions for an x86 PXE installation.</p> <ul style="list-style-type: none">■ For Solaris 10, refer to the <i>Solaris 10 10/09 Installation Guide: Network-Based Installations</i> or the <i>Solaris 10 9/10 Installation Guide: Network-Based Installations</i> in the Solaris 10 Operating System documentation collection.■ For Solaris 11 Express, refer to the <i>Oracle Solaris 11 Express Automated Installer Guide</i> in the Oracle Solaris 11 Express Information Library.
	Boot the Solaris OS on your server without a hard drive. Use this method with a PXE-based network installation.	<p>Follow the instructions for an x86 PXE installation.</p> <ul style="list-style-type: none">■ For Solaris 10, refer to the <i>Solaris 10 10/09 Installation Guide: Network-Based Installations</i> or the <i>Solaris 10 9/10 Installation Guide: Network-Based Installations</i> in the Solaris 10 Operating System documentation collection.■ For Solaris 11 Express, refer to the <i>Oracle Solaris 11 Express Automated Installer Guide</i> in the Oracle Solaris 11 Express Information Library.

Also see:

- [“Obtaining Solaris 10 Documentation” on page 31](#)
- [“Obtaining Solaris 11 Express Documentation” on page 31](#)
- [“Identifying Logical and Physical Network Interface Names for Solaris 10 OS Installation” on page 32](#)

Obtaining Solaris 10 Documentation

Use the following links to obtain Solaris 10 documentation. Make sure to follow instructions specific to x86 systems where they are specified.

- For the Solaris 10 installation guides, refer to the [Solaris 10 10/09 Release and Installation Collection](#) or the [Oracle Solaris 10 9/10 Release and Installation Collection](#).
- For the Solaris 10 administration guides, refer to the [Oracle Solaris 10 System Administrator Collection](#).
- For information about upgrading your Solaris system, refer to the [Solaris 10 10/09 Installation Guide: Solaris Live Upgrade and Upgrade Planning](#) or the [Oracle Solaris 10 9/10 Installation Guide: Solaris Live Upgrade and Upgrade Planning](#).
- For troubleshooting information, refer to Appendix A of the [Solaris 10 10/09 Installation Guide: Custom JumpStart and Advanced Installations](#) or of the [Oracle Solaris 10 9/10 Installation Guide: Custom JumpStart and Advanced Installations](#).
- Refer to the *Sun Fire X4800 Server Product Notes* for patch and other late-breaking information. Patches and instructions are available from the SunSolve Patch Portal at <http://support.oracle.com>.

Solaris 10 documentation is also available on the Solaris Documentation DVD included with your Solaris OS software.

Obtaining Solaris 11 Express Documentation

Use the following links to obtain Solaris 11 Express documentation. Make sure to follow instructions specific to x86 systems where they are specified.

- For a list of new features in Solaris 11 Express 2010.11, refer to [Oracle Solaris 11 Express 2010.11 What's New](#).
- Solaris 11 Express general documentation refer to the [Oracle Solaris 11 Express Information Library](#).
- For information on obtaining Solaris 11 Express media, refer to [Oracle Solaris 11 Express 2010.11 Downloads](#).
- For information on installing Solaris 11 Express refer to [Getting Started With Oracle Solaris 11 Express](#).
- For information on setting up the PXE installer refer to the [Oracle Solaris 11 Express Automated Installer Guide](#).

Identifying Logical and Physical Network Interface Names for Solaris 10 OS Installation

When you are configuring an operating system for a networked server, you might need to provide the logical name (assigned by the OS) and the physical name (MAC address) of each network interface. This topic shows you how to get this information.

- [“How to Identify Logical and Physical Network Interface Names” on page 32](#)

▼ How to Identify Logical and Physical Network Interface Names

Use this procedure to display information about MAC addresses and network interfaces, including their logical and physical names (MAC addresses).

- 1 In the **Install Type** menu, select **Option (6) Single User Shell** and press **Enter**.

Note – Alternatively, you can run these commands from a command shell.

If a message appears about mounting an OS instance, select **q**. You should not mount any OS instance.

The message "Starting Shell" appears. See the following figure.

```

1. Solaris Interactive (default)
2. Custom JumpStart
3. Solaris Interactive Text (Desktop session)
4. Solaris Interactive Text (Console session)
5. Apply driver updates
6. Single user shell

Enter the number of your choice.
Selected: 6

Single user shell

Searching for installed OS instances...

Multiple OS instances were found. To check and mount one of them
read-write under /a, select it from the following list. To not mount
any, select 'q'.

  1 /dev/dsk/c2t0d0s0    Solaris 10 6/06 s10x_u2wos_08 X86
  2 /dev/dsk/c2t1d0s0    Solaris 10 6/06 s10u2_08-DN-WDS X86

Please select a device to be mounted (q for none) [?,?,q]: q

Starting shell.
#
```

- 2 At the command prompt (**#**), type the following command to plumb all network interfaces.
ifconfig -a plumb

Note – The plumb process might take some time.

3 At the command prompt, type the following command.

```
# ifconfig -a
```

The output of Solaris named interfaces and MAC addresses appears. For example:

```
# ifconfig -a | more
e1000g0: flags=1000802<BROADCAST,MULTICAST,IPv4> mtu 1500 index 2
    inet 0.0.0.0 netmask 0
    ether 0:14:4f:c:a1:ee
e1000g1: flags=1000802<BROADCAST,MULTICAST,IPv4> mtu 1500 index 3
    inet 0.0.0.0 netmask 0
    ether 0:14:4f:c:a1:ef
e1000g2: flags=1000802<BROADCAST,MULTICAST,IPv4> mtu 1500 index 4
    inet 0.0.0.0 netmask 0
    ether 0:14:4f:c:a5:d6
e1000g3: flags=1000802<BROADCAST,MULTICAST,IPv4> mtu 1500 index 5
    inet 0.0.0.0 netmask 0
    ether 0:14:4f:c:a5:d7
e1000g4: flags=1000802<BROADCAST,MULTICAST,IPv4> mtu 1500 index 6
    inet 0.0.0.0 netmask 0
    ether 0:14:4f:c:a1:4e
e1000g5: flags=1000842<BROADCAST,RUNNING,MULTICAST,IPv4> mtu 1500 index 1
    inet 0.0.0.0 netmask 0
    ether 0:14:4f:c:a1:4f
e1000g6: flags=1000802<BROADCAST,MULTICAST,IPv4> mtu 1500 index 7
    inet 0.0.0.0 netmask 0
    ether 8:0:20:b6:ce:94
e1000g7: flags=1000802<BROADCAST,MULTICAST,IPv4> mtu 1500 index 8
    inet 0.0.0.0 netmask 0
```

In the sample output above:

- The e1000g# entry in the first column refers to the Solaris logical named interface. This first column in the output identifies the logical names assigned by Solaris to the network interfaces.
- The ether #:#:#:#:# entry in second column (third row) refers to the physical MAC address name of the network port.

For example:

The physical MAC address for the Solaris named network interface is e1000g0 is 0:14:4f:c:a1:ee.

4 Save this information to a file, or write it down.

5 When you are done, to start the system configuration script, type sys-unconfig (1M) at the command line.

This command restores the system configuration to the factory defaults.



Caution – The `sys-unconfig(1M)` command halts the system and restores the factory settings. Do not run this command unless you are ready to reconfigure your system.

For example:

```
# sys-unconfig
```

```
WARNING
```

```
This program will unconfigure your system. It will cause it  
to revert to a "blank" system - it will not have a name or know  
about other systems or networks.
```

```
This program will also halt the system.
```

```
Do you want to continue (y/n) ?
```

The system reboots and the configuration script starts.