

Oracle Insurance

Data Capture Installation & Upgrade Guide

Release 4.4.5

September 2010

Copyright © 2009, 2010, Oracle and/or its affiliates. All rights reserved.

Oracle Insurance Data Capture Installation & Upgrade Guide

Release 4.4.5

Part # E18518-01

Library # E18520-01

September 2010

Primary Authors: Mary Elizabeth Wiger

Contributing Authors:

This software and related documentation are provided under a license agreement containing restrictions on use and disclosure and are protected by intellectual property laws. Except as expressly permitted in your license agreement or allowed by law, you may not use, copy, reproduce, translate, broadcast, modify, license, transmit, distribute, exhibit, perform, publish, or display any part, in any form, or by any means. Reverse engineering, disassembly, or decompilation of this software, unless required by law for interoperability, is prohibited.

The information contained herein is subject to change without notice and is not warranted to be error-free. If you find any errors, please report them to us in writing.

If this software or related documentation is delivered to the U.S. Government or anyone licensing it on behalf of the U.S. Government, the following notice is applicable:

U.S. GOVERNMENT RIGHTS

Programs, software, databases, and related documentation and technical data delivered to U.S. Government customers are "commercial computer software" or "commercial technical data" pursuant to the applicable Federal Acquisition Regulation and agency-specific supplemental regulations. As such, the use, duplication, disclosure, modification, and adaptation shall be subject to the restrictions and license terms set forth in the applicable Government contract, and, to the extent applicable by the terms of the Government contract, the additional rights set forth in FAR 52.227-19, Commercial Computer Software License (December 2007). Oracle USA, Inc., 500 Oracle Parkway, Redwood City, CA 94065.

This software is developed for general use in a variety of information management applications. It is not developed or intended for use in any inherently dangerous applications, including applications which may create a risk of personal injury. If you use this software in dangerous applications, then you shall be responsible to take all appropriate fail-safe, backup, redundancy, and other measures to ensure the safe use of this software. Oracle Corporation and its affiliates disclaim any liability for any damages caused by use of this software in dangerous applications.

Oracle is a registered trademark of Oracle Corporation and/or its affiliates. Other names may be trademarks of their respective owners.

This software and documentation may provide access to or information on content, products, and services from third parties. Oracle Corporation and its affiliates are not responsible for and expressly disclaim all warranties of any kind with respect to third-party content, products, and services. Oracle Corporation and its affiliates will not be responsible for any loss, costs, or damages incurred due to your access to or use of third-party content, products, or services.

Where an Oracle offering includes third party content or software, we may be required to include related notices. For information on third party notices and the software and related documentation in connection with which they need to be included, please contact the attorney from the Development and Strategic Initiatives Legal Group that supports the development team for the Oracle offering. Contact information can be found on the Attorney Contact Chart.

The information contained in this document is for informational sharing purposes only and should be considered in your capacity as a customer advisory board member or pursuant to your beta trial agreement only. It is not a commitment to deliver any material, code, or functionality, and should not be relied upon in making purchasing decisions. The development, release, and timing of any features or functionality described in this document remains at the sole discretion of Oracle.

This document in any form, software or printed matter, contains proprietary information that is the exclusive property of Oracle. Your access to and use of this confidential material is subject to the terms and conditions of your Oracle Software License and Service Agreement, which has been executed and with which you agree to comply. This document and information contained herein may not be disclosed, copied, reproduced, or distributed to anyone outside Oracle without prior written consent of Oracle. This document is not part of your license agreement nor can it be incorporated into any contractual agreement with Oracle or its subsidiaries or affiliates.

CONTENTS

	Preface	vi
	Audience	vi
	E-Delivery.....	vi
	RELATED DOCUMENTS	vi
CHAPTER 1		
	Checklist of Requirements and Procedures	7
CHAPTER 2		
	Requirements.....	8
	Server Requirements	8
	Internet Information Services (IIS) 6.0	8
	Message Queuing Services.....	10
	MDAC 2.8.....	10
	Microsoft .NET Framework	11
	MSDTC	12
	Insbridge Framework Administrator	15
	Installing IBFA.....	15
	Microsoft SQL Server 2005.....	21
CHAPTER 3		
	New Installation.....	22
	Restore the OIDC Databases	23
	OIDC Engine Installation.....	25
	OIDC Palette Installation.....	30
CHAPTER 4		
	Server Configurations for OIDC	35
	Settings for Compression.....	49
CHAPTER 5		
	Manually Updating Web.Config File	52
CHAPTER 6		
	Configuring OIDC.....	54
CHAPTER 7		
	Upgrade Installation	56

CHAPTER 8

Removing OIDC	63
Removing OIDC Databases.....	65

CHAPTER 9

Support.....	66
TTY Access to Oracle Support Services	66

INDEX

LIST OF FIGURES

FIGURE 1 ENABLING ACTIVE SERVER PAGES AND ASP.NET	9
FIGURE 2 MESSAGE QUEUING TYPE	10
FIGURE 3 INSTALLING .NET FRAMEWORK	11
FIGURE 4 CHECKING MSDTC.....	12
FIGURE 5 MY COMPUTER PROPERTIES	13
FIGURE 6 SECURITY CONFIGURATION	14
FIGURE 7 DTC CONSOLE MESSAGE.....	14
FIGURE 8 RESTART MESSAGE	15
FIGURE 9 INSTALLING INSBRIDGE.....	16
FIGURE 10 ENTERING THE DESTINATION FOLDER FOR INSBRIDGE	17
FIGURE 11 LOGON INFORMATION	18
FIGURE 12 SELECTING FEATURES FOR INSTALLATION	19
FIGURE 13 READY TO INSTALL	20
FIGURE 14 INSTALL README SCREEN	21
FIGURE 15 SETTING CLIENT DATABASE TO SQL SERVER 2005 (90)	23
FIGURE 16 WELCOME TO INSTALLING OIDC.....	25
FIGURE 17 SELECTING INSTALLATION PATH.....	26
FIGURE 18 READY TO INSTALL	26
FIGURE 19 ENGINE INSTALLATION PROGRESS	27
FIGURE 20 ENTERING DATABASE INFORMATION	28
FIGURE 21 COMPLETED ENGINE INSTALLATION	29
FIGURE 22 WELCOME TO INSTALLING OIDC.....	30
FIGURE 23 SELECTING THE DESTINATION FOLDER.....	31
FIGURE 24 READY TO INSTALL	32
FIGURE 25 ENGINE INSTALLATION PROGRESS	33
FIGURE 26 ENTERING DATABASE INFORMATION	33
FIGURE 27 COMPLETED PALETTE INSTALL	34
FIGURE 28 NAVIGATING TO APPLICATION POOL	35
FIGURE 29 CREATING A NEW APPLICATION POOL	36
FIGURE 30 SELECTING APPLICATION POOL PROPERTIES.....	36
FIGURE 31 SETTING PERFORMANCE OPTIONS	37
FIGURE 32 DELETING THE VIRTUAL DIRECTORY.....	38
FIGURE 33 CREATING NEW VIRTUAL DIRECTORY	39
FIGURE 34 VIRTUAL DIRECTORY WIZARD.....	40
FIGURE 35 CREATING A NEW APPLICATION POOL ALIAS.....	40
FIGURE 36 SELECTING THE DIRECTORY PATH.....	41
FIGURE 37 SETTING PERFORMANCE OPTIONS	41
FIGURE 38 FINISH CREATING DIRECTORY	42
FIGURE 39 SELECTING VIRTUAL DIRECTORY PROPERTIES	43
FIGURE 40 SELECTING THE OIDC APPLICATION POOL.....	44
FIGURE 41 SETTING THE DEFAULT CONTENT PAGE.....	45
FIGURE 42 VERIFYING ANONYMOUS ACCESS	46
FIGURE 43 SELECTING ASP.NET 4.0.....	47
FIGURE 44 ALLOWING ASP.NET 4.0	48
FIGURE 45 SELECTING PROPERTIES.....	49
FIGURE 46 OIDC HOME.....	54
FIGURE 47 OIDC ADMIN	55
FIGURE 48 DATABASE WELCOME.....	57
FIGURE 49 SELECTING AN INSTALLATION FOLDER.....	58

FIGURE 50 COMPLETED DATABASE INSTALLATION 60

FIGURE 51 DBUPDATER 61

FIGURE 52 REMOVING/REPAIRING OIDC 63

FIGURE 53 REMOVE COMPLETE 64

PREFACE

Welcome to the *Oracle Insurance Data Capture Installation and Upgrade Guide*. Oracle Insurance Data Capture (OIDC) is a Web-based software application that streamlines data capture by allowing insurers to create and configure questions and rules through an intelligent front-end data capture web application.

For release 4.4.5, component names have been updated. Designer is now Palette and Questionnaire is now Engine.

AUDIENCE

This guide is intended for system administrators, installers, database administrators and others tasked with installing and configuring the Oracle Insurance Data Capture (OIDC) system and associated databases.

E-DELIVERY

Oracle Insurance Data Capture is available as a download from the Oracle E-Delivery system. Downloaded files are zipped. Prior to installation, please make sure the source machine(s) where OIDC will be loaded has an unzip utility.

An unzip utility for most platforms is available on the E-Delivery download page.

Documentation from E-Delivery is in PDF format. Prior to installation, please make sure the source machine(s) where OIDC documentation will be loaded has a PDF reader.

Files are downloaded with part numbers as file names. Please make note of the part numbers you have downloaded and the corresponding file name. You may be asked to provide the part numbers or the filename if you contact Oracle Insurance Support.

RELATED DOCUMENTS

For more information, refer to the following Oracle resources:

- The Oracle Insurance web site:
<http://www.oracle.com/industries/insurance/index.html>
- If you need assistance with an Oracle Insurance Data Capture, please log a Service Request using My Oracle Support at:
<https://support.oracle.com/>.

CHECKLIST OF REQUIREMENTS AND PROCEDURES

New Installation Checklist

The following checklist can be used to help in a **NEW** installation of OIDC.

- ☐ **Check Web Server for needed dependencies**
 - ☐ IIS Installed
 - ☐ MSMQ
 - ☐ MDAC 2.8
 - ☐ Microsoft .NET Framework version 4.0
 - ☐ MSDTC
 - ☐ IBFA Version 3.1.0 installed. Version 3.1.0 is found in Oracle Insurance Insbridge Rating and Underwriting Release 3.13.0. Please request this version from Oracle Support.
- ☐ **Check Database Server for needed requirements**
 - ☐ Proper Network Connection to Database Server
 - ☐ MS SQL Server 2005 SP2 with SQL Server Management Studio **OR**
MS SQL Server 2005 Express with SQL Server Management Studio
- ☐ **Install OIDC Database**
 - ☐ Restore System database
 - ☐ Restore Client database
 - ☐ Restore Log database
- ☐ **Install Engine**
- ☐ **Install Palette**
- ☐ **Application Pool**
- ☐ **Virtual Directory Update**
- ☐ **Configure OIDC**
 - ☐ Change sysadmin password
 - ☐ Verify entries on Administration page

Update Checklist

The following checklist can be used to help with an **UPGRADE** of OIDC.

- ☐ **Upzip the DBUpdater.zip file and park DBUpdate folder**
- ☐ **Run the DBUpdaterInstall.msi**
- ☐ **Uninstall previous version – Questionnaire or Engine**
- ☐ **Run 4.4.5 Engine Setup.exe**
- ☐ **Uninstall previous version – Designer or Palette**
- ☐ **Run 4.4.5 Palette Setup.exe**

REQUIREMENTS

SERVER REQUIREMENTS

A full installation of Windows Server 2003 is required. The following configuration assumes that the administrator of the server to be generally familiar with managing a Windows 2003 server.

Most Windows Server components are available for installation from the Control Panel, Add/Remove Programs applet by selecting Add/Remove Windows Components. In order to install these Windows Components, you may be required to have the Windows Installation files available. The following components are required:

- **IIS – Internet Information Services Version 6.0**
- **MSMQ – Microsoft Message Queuing Services**
- **MDAC 2.8**
- **Microsoft .NET Framework, version 4.0**
- **MSDTC**

Internet Information Services (IIS) 6.0

Oracle Insurance Data Capture (OIDC) is a web based application and requires IIS to be installed before the OIDC installation to facilitate the default web virtual directories creations.

The subcomponents of Application Server needed by OIDC are:

- Application Server Console
 - ASP.NET
 - Enable network COM+ access
 - Internet Information Services (IIS)
 - Common Files (default)
 - SMTP Service – Although not required, the SMTP service will allow OIDC to notify users via email when extended jobs have been completed. If the SMTP service is located on a corporate network, then the service must be properly configured for authorization to relay mail internally to a smart host. Please check with your information services support group for proper configuration.
 - World Wide Web Service
 - Active Server Pages
 - World Wide Web Service
- Message Queuing
- Active Directory Integration (default)
- Common (default)

After installing IIS, Active Server Pages, ASP.NET v4.0 must be enabled in order for OIDC to work.

1. Open Internet Information Services (IIS) Manager in the administration tools.
2. Select the Web Service Extensions on the left hand side and make sure they are **Allowed** as shown below:

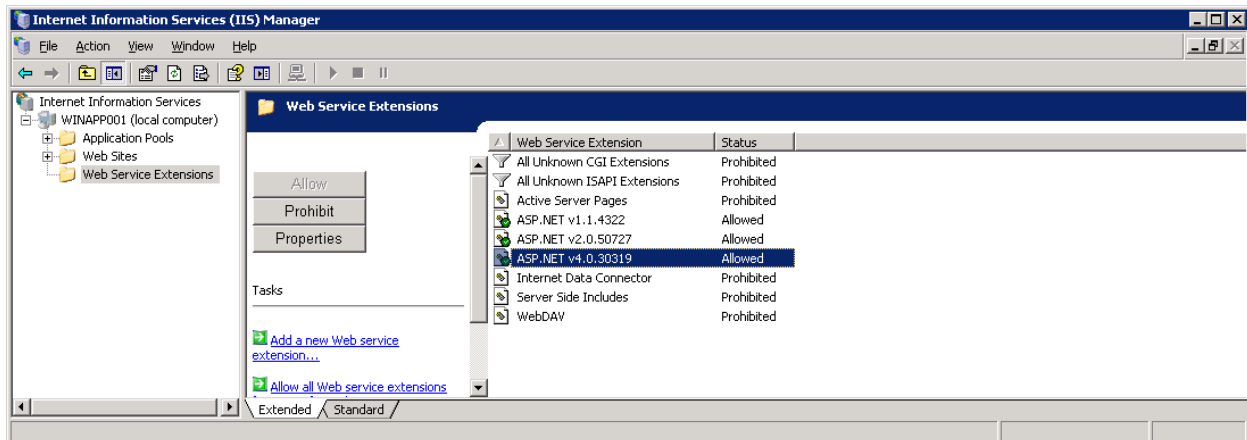


Figure 1 Enabling Active Server Pages and ASP.NET

Message Queuing Services

The Insbridge Rating and Underwriting system utilizes the Microsoft Message Queuing Service (MSMQ) for batching jobs and other types of extended functions. The Microsoft Messaging Queuing Service can be configured for stand-alone operation without needing to access any Active Directory unless specified by your information support services. OIDC utilizes by default private message queues that have no need for routing.

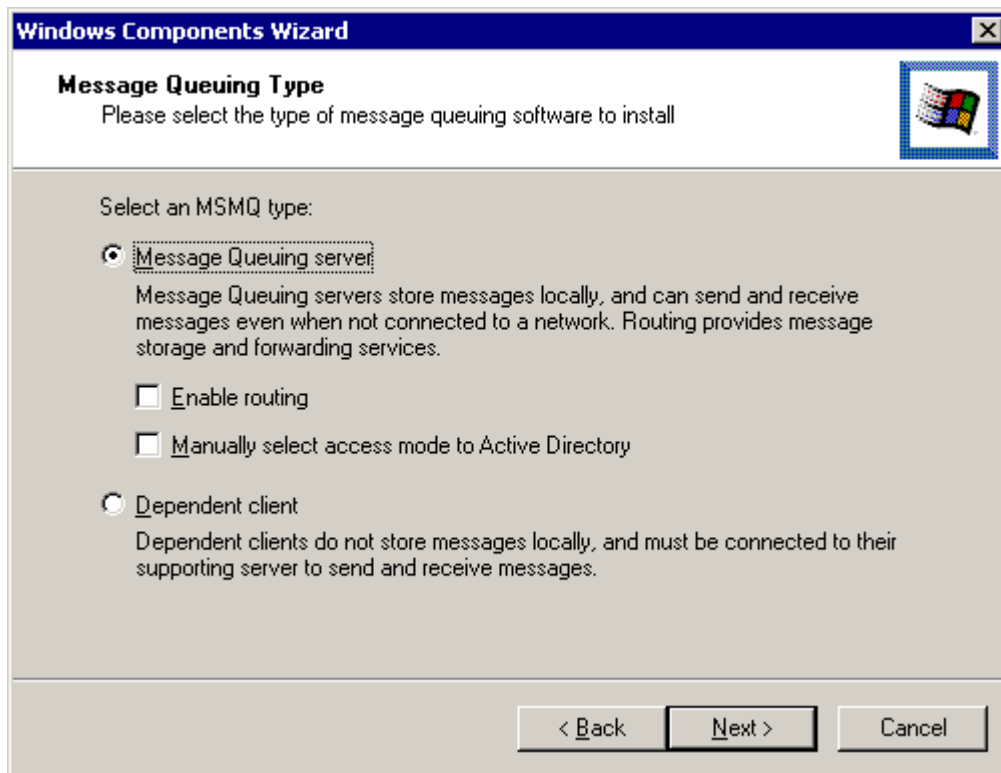


Figure 2 Message Queuing Type

MDAC 2.8

If OIDC is split between a web server and a database server, then Microsoft's Data access component version 2.8 needs to be installed on the web front-end server.

NOTE	MDAC version 2.8 is included with Windows Server 2003.
-------------	--

To check to see if MDAC is installed, go to: Start→Control Panel→Add or Remove Programs and scroll through the list. If it is not installed, you can download it from Microsoft's web site.

Microsoft .NET Framework

The installation application attempts to install all necessary dependencies that may be missing on the OIDC web host and will attempt to install the Microsoft .NET 4.0 Framework from the web. In some corporate environments, external access to download the Framework may not be allowed. Therefore, we would suggest installing the Microsoft .NET Framework version 4.0 prior to starting the OIDC install. This can be obtained from Microsoft's website or from using Microsoft's Windows Update.

We also highly recommend installing the .NET Framework after installing IIS in order to update all the web applications to utilize the ASPNET system. This can be doubled checked by opening Internet Service Manager and right clicking the Default Web Site, selecting properties, then select the Home Directory tab. Click the Configuration... button and scroll down.

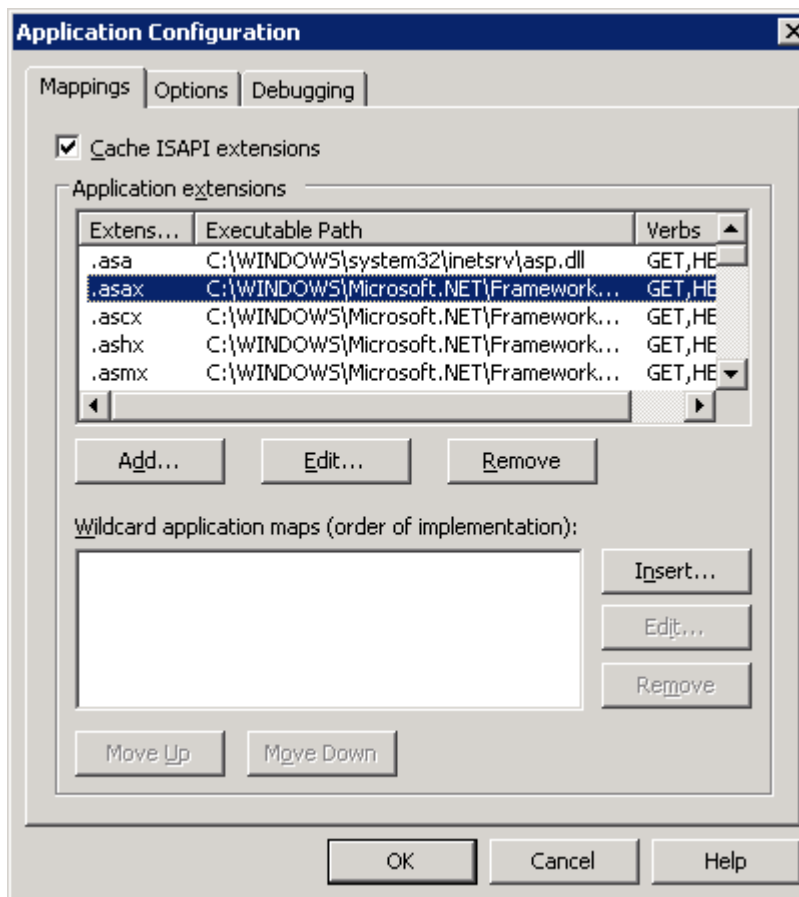


Figure 3 Installing .NET Framework

The ASPNET extensions (.asax, aspx, .asmx, etc.) need to point to %WINDIR%\Microsoft.NET\Framework\v2.0.50727\aspnet_isapi.dll.

MSDTC

Prior to installing OIDC, please check MSDTC availability.

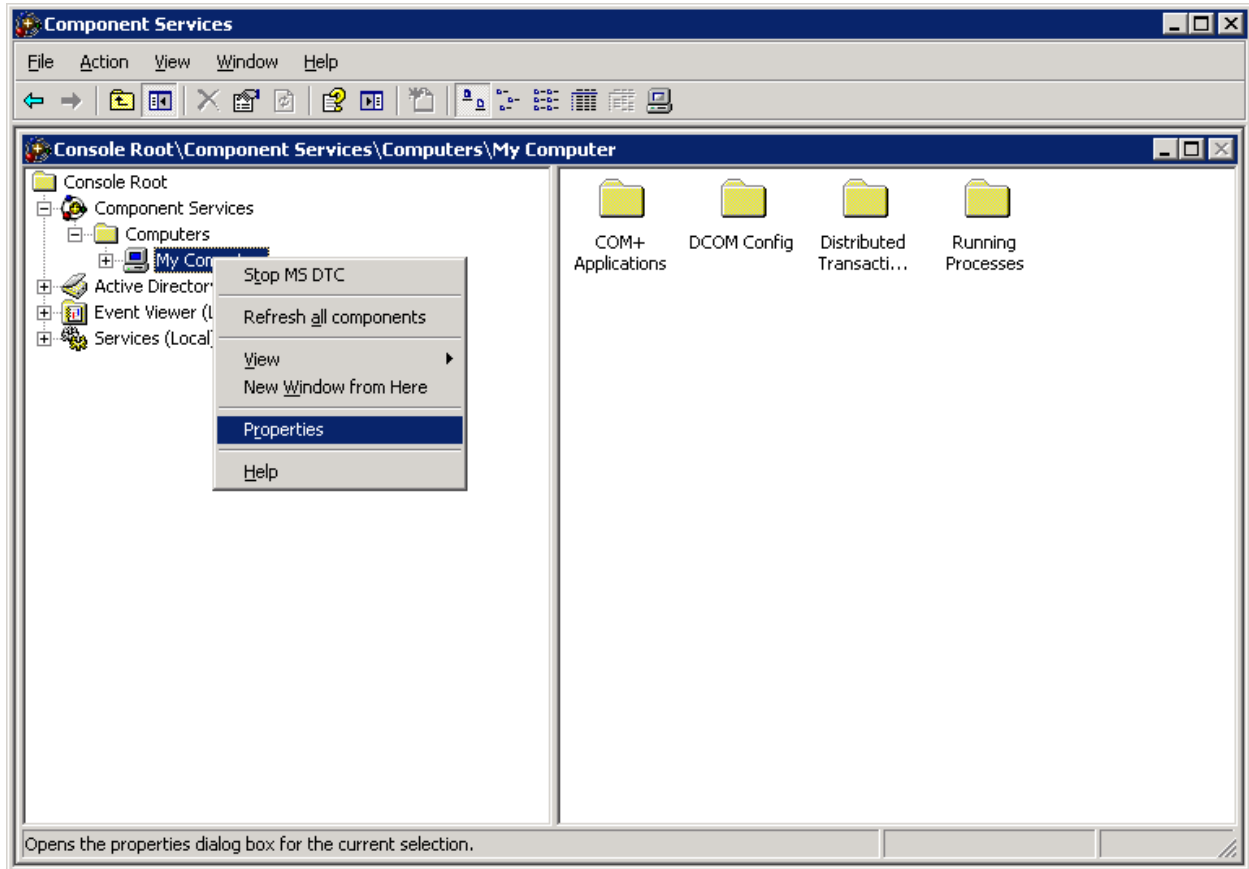


Figure 4 Checking MSDTC

1. Go to Control Panel → Administration Tools → Component Services.
2. Right click on My Computer → Properties.

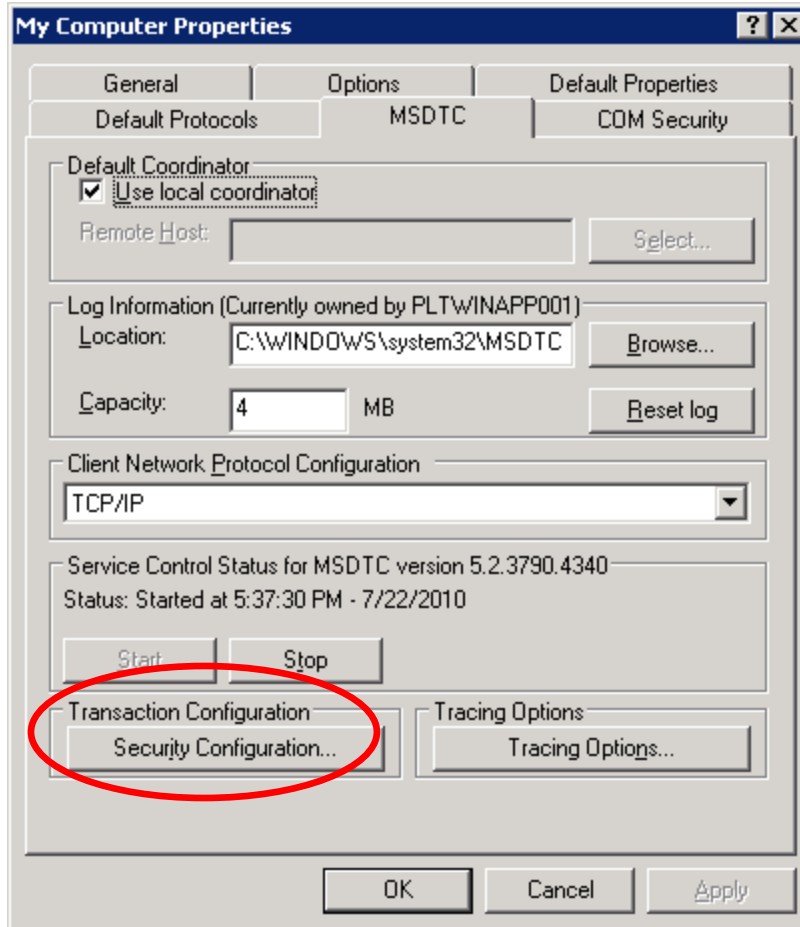


Figure 5 My Computer Properties

3. On the MSDTC tab, make sure of the following:
 - a. **Use local coordinator** in Default Coordinator panel is checked.
 - b. **Start button** in Service Control Status is accessed (the button is grayed out).

4. Click on **Security Configuration...** on Transaction Configuration panel.

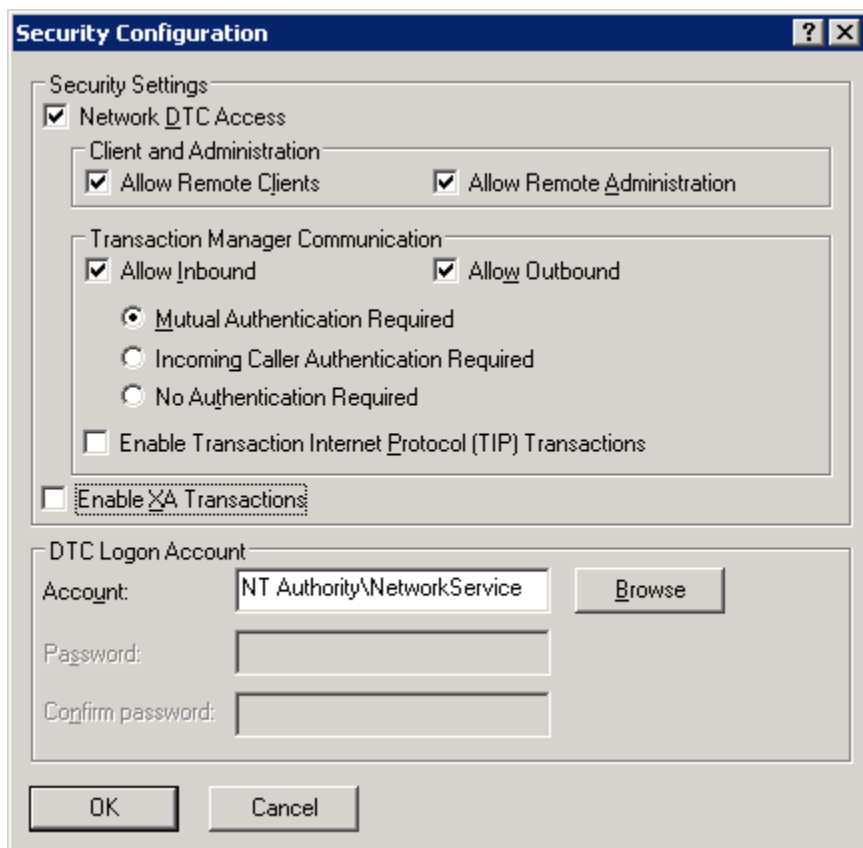


Figure 6 Security Configuration

5. On Security Configuration window, check:
 - a. **Network DTC Access.**
 - b. **Allow Remote Clients.**
 - c. **Allow Remote Administration.**
 - d. **Allow Inbound.**
 - e. **Allow Outbound.**

Mutual Authentication Required is the recommended setting. However, in some environments the No Authentication option may be used.

6. Click **OK** to save. A DTC Console message will be displayed.

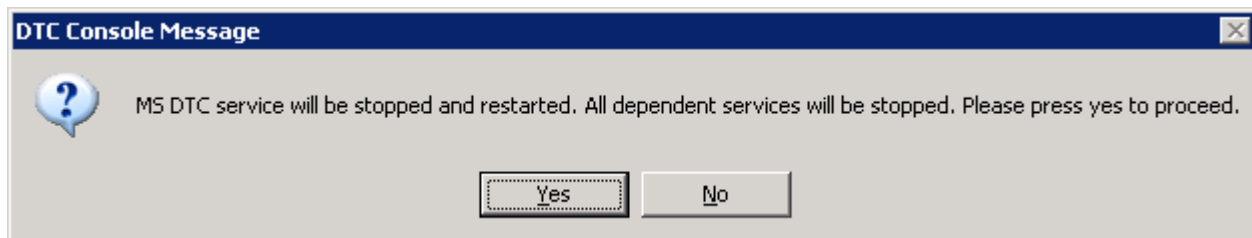


Figure 7 DTC Console Message

7. Click **Yes** on the DTC Console Message. A confirmation message will be displayed.



Figure 8 Restart Message

8. Click **OK** on DTC Console Message.
9. Click **OK** to save.

INSBRIDGE FRAMEWORK ADMINISTRATOR

The Insbridge Framework Administrator (IBFA) is an administrative tool that OIDC uses. OIDC requires that IBFA be installed on the same machine as Palette and Engine.

NOTE

An instance of Oracle Insurance Insbridge Rating and Underwriting Framework Administration (IBFA) Version 3.1.0 must be in place or installed prior to installing OIDC.

IBFA Version 3.1.0 is found in Oracle Insurance Insbridge Rating and Underwriting Release 3.13.0.

NOTE

If you are planning on doing a complete installation of Insbridge Rating and Underwriting, please do the full installation found in the Insbridge Installation Guide.

The IBFA installation in this guide is not be a complete installation of the Insbridge Rating and Underwriting System.

Installing IBFA

IBFA is in the Insbridge Rating and Underwriting (IBRU) System download, available from the Oracle E-Delivery system. Downloaded files are zipped. Prior to installation, please make sure the source machine(s) where IBRU will be loaded has an unzip utility.

You will only need the **Oracle Insurance - Insbridge Rating and Underwriting Install file**.

1. Open the **Oracle Insurance - Insbridge Rating and Underwriting Install file**.

NOTE

The installation program requires that the installer have administrator rights on the machine where the install is occurring.

NOTE

Please close all open applications before running the Oracle Insurance – Insbridge Rating and Underwriting file.

2. Open the Oracle Insurance – Insbridge Rating and Underwriting file. A Welcome screen will be displayed.

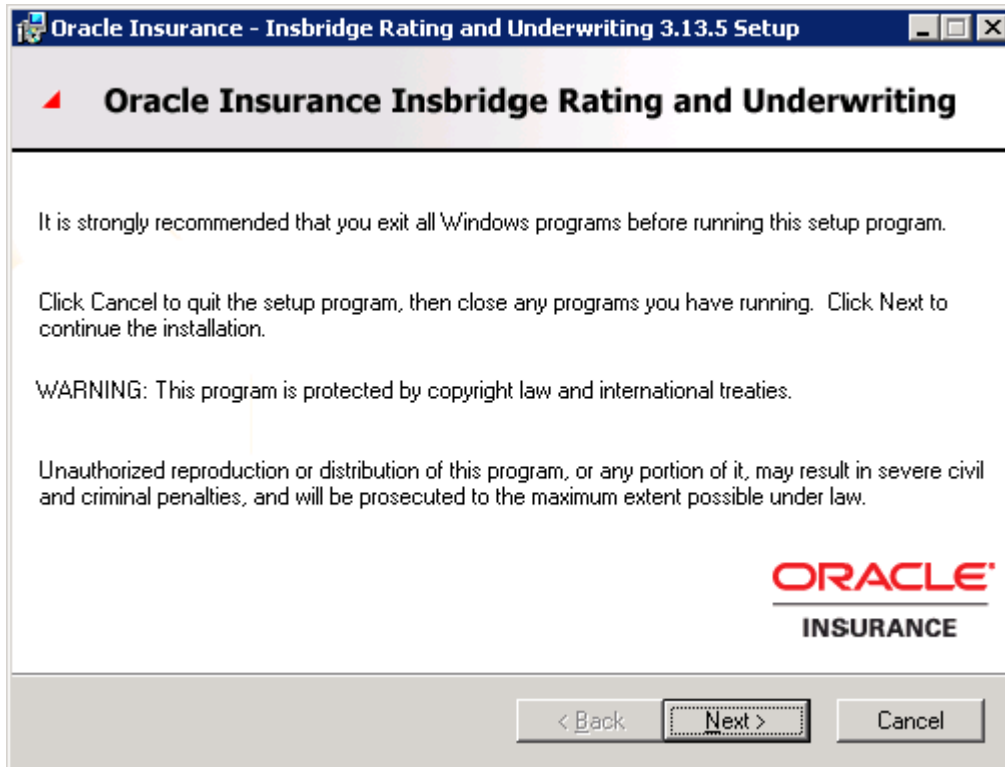


Figure 9 Installing Insbridge

3. Click **Next** to continue.

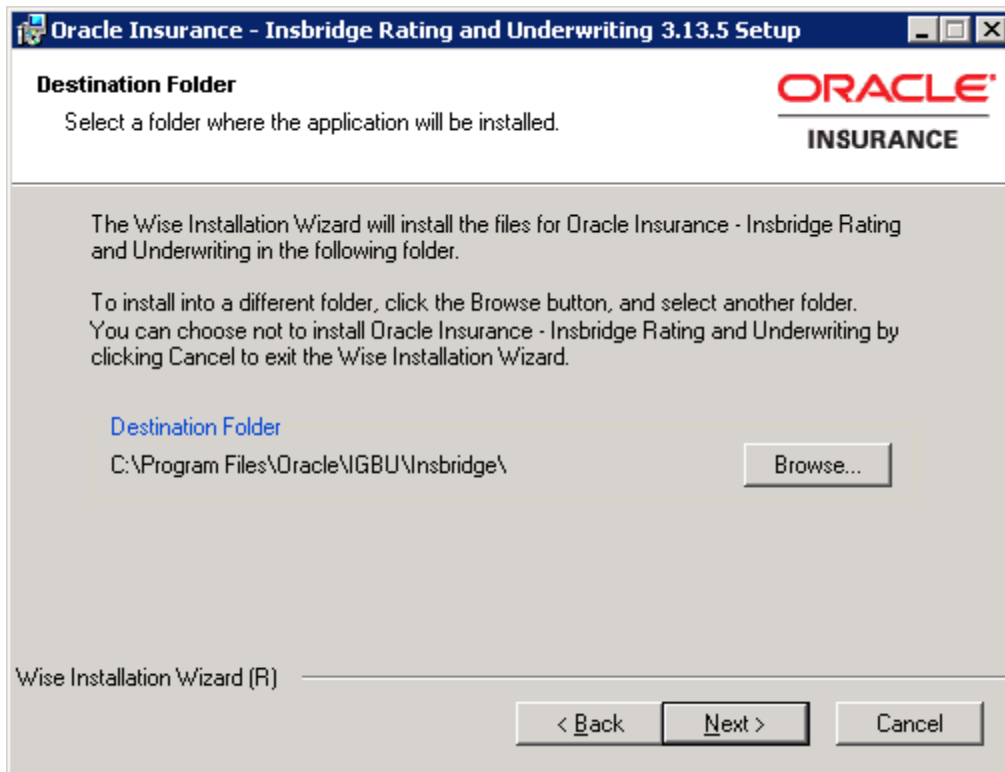


Figure 10 Entering the Destination Folder for Insbridge

4. Choose the location where the Insbridge installation will be located. This will be the location for all future installations for OIDC and Insbridge applications. Click **Next** to continue.

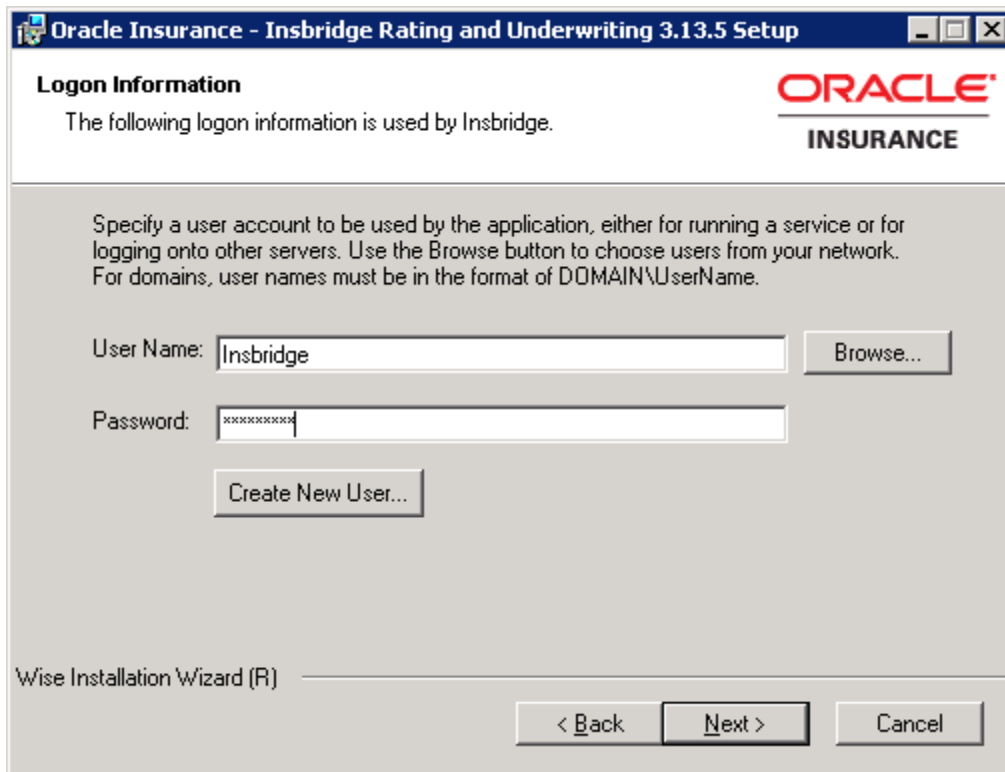


Figure 11 Logon Information

5. The logon information screen will be displayed. Enter a **User Name and Password** for a user with rights to the machine.

NOTE

You can use any user with admin rights to the machine or you can create a user specifically for this installation.

6. Click **Next** to continue.

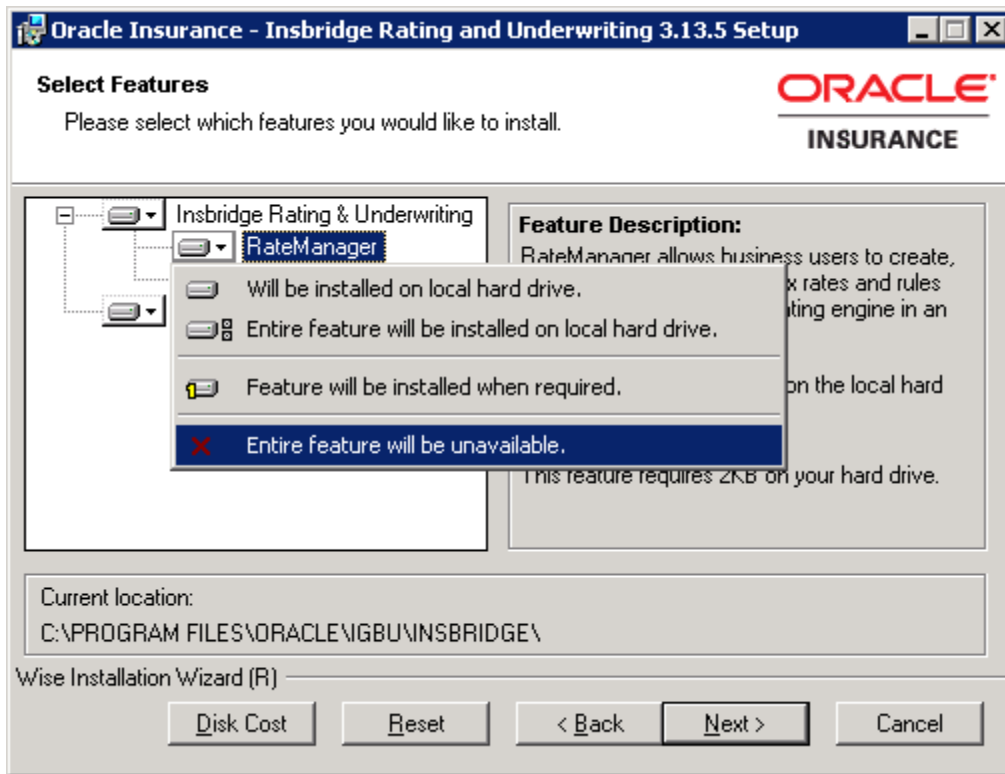


Figure 12 Selecting Features for Installation

7. The next screen will list the applications to be installed. To expand the options and view details, click on the downward arrow. All features are checked for installation. RateManager is the only one that you will be allowed to not install. Check **Entire feature will be unavailable**. Click **Next** to continue.

Options are:

- **Insbridge Rating and Underwriting:**
 - The default option is: Entire feature will be installed on local hard drive. This includes IBFA.
 - You will not be able to opt out of this selection.
- **RateManager:**
 - The default option is: Entire feature will be installed on local hard drive.
 - You will be able to opt out of this option. **Select Entire Feature will be unavailable.** RateManager will not be installed.
- **IBFA:**
 - The default option is: Entire feature will be installed on local hard drive.
 - You will not be able to opt out of this selection.
- **Oracle BI Publisher:**
 - The default option is: Entire feature will be installed on local hard drive.
 - You will not be able to opt out of this selection.
 - This option does **not** install the OBI Publisher. Only the templates required by the IBRU application will be installed on local hard drive.

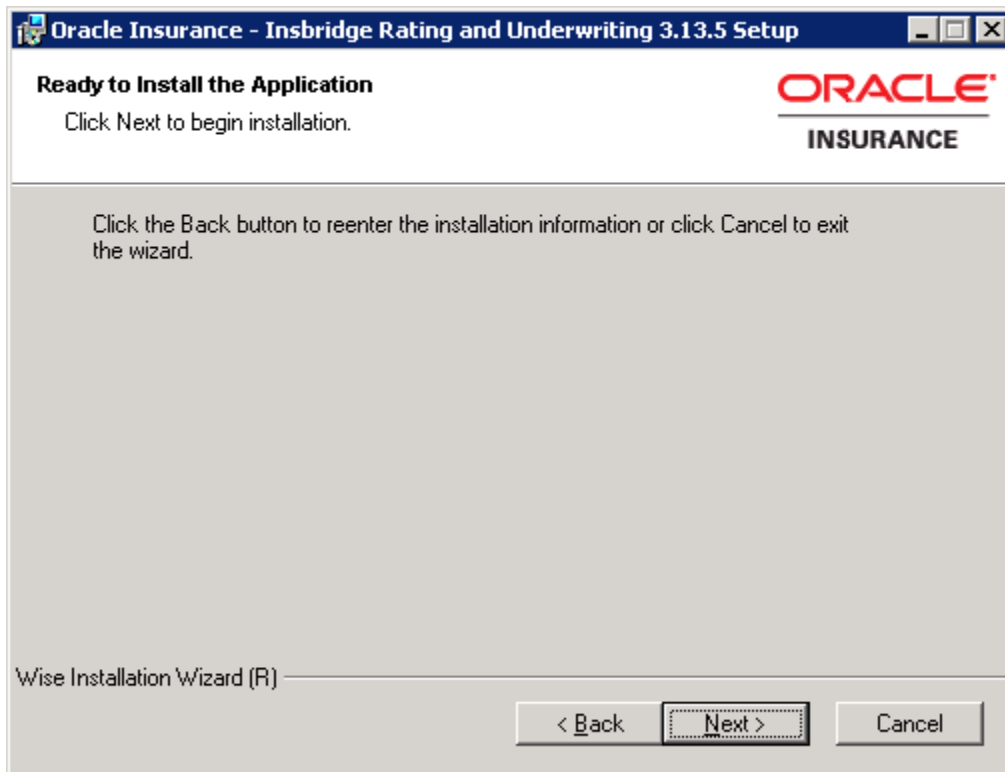
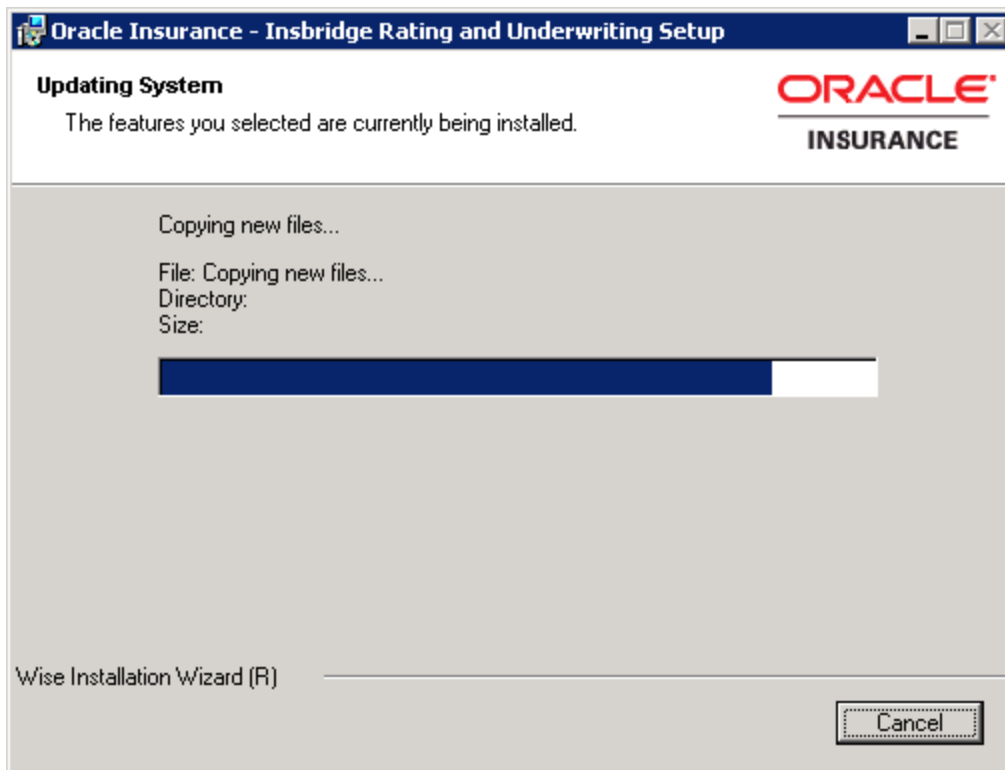


Figure 13 Ready to Install

8. A Ready to Install screen will be displayed. If you are ready, click **Next**. Otherwise click Back to check the options you want to install.



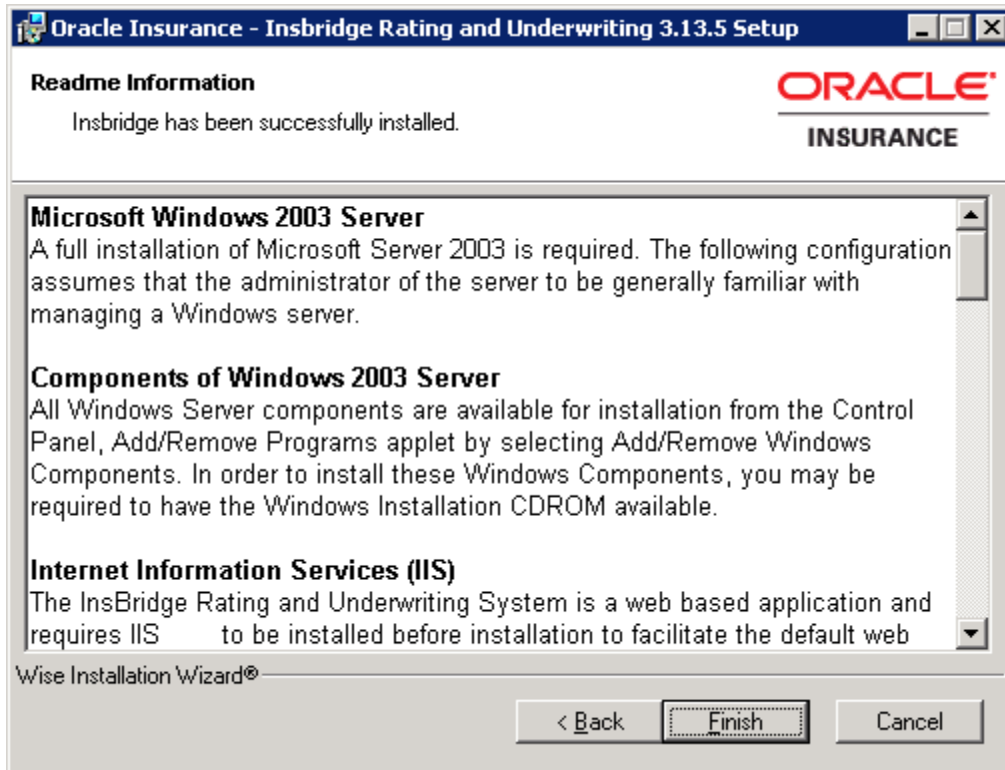


Figure 14 Install ReadMe Screen

9. Click **Finish** to finish the installation. The installation should complete successfully.

MICROSOFT SQL SERVER 2005

OIDC requires SQL Server 2005 SP3. Microsoft SQL Server can be installed on the same machine where OIDC resides, however for security and performance reasons, it is not recommended. If SQL Server resides on a separate host from the OIDC web front end, a properly configured network connection from the web server front end to SQL Server must exist. Testing can be performed by using the Data Sources application in Administrative Tools to make a default connection to the database server.

Depending on the load expected on the web server, the database can be placed on a separate SQL Server that can either be independent or shared as long as the following conditions are met.

NOTE For SQL Server 2005, please make sure the SQL Server Client is installed.

- **Server Authentication** should be set to SQL Server and Windows Authentication mode.
- **Collation and Sort Order: Currently supported are the default SQL Server** collation and sort order plus case sensitivity using SQL_Latin1_General_CP1_CI_AS as the server collation. Check with Oracle Insurance for any questions regarding database server sort orders or collations.

NEW INSTALLATION

The download from E-Delivery has four files:

- O IDC_4.4.5_Database – Holds the databases and updates for the application.
- O IDC_4.4.5_Palette – Installs the Palette portion of the application.
- O IDC_4.4.5_Engine – Installs the Engine portion of the application.
- O IDC_4.4_5_Documentation – Contains the Installation Guide and Release Notes for the application.

The download files you receive will be zip files.

- For a new install, you will need the O IDC_4.4.5_Database.zip. This file contains the blank databases that will need to be restored. Unzip the O IDC_4.4.5_Database.zip on the machine where the database will be installed.
- Unzip the Engine and Palette zip files on the machine where the application will be installed. These files will contain the executables that need to be run.
- Park the Engine file in a location you can access.
- Park the Palette file in a location you can access.
- Unzip the documentation file to a machine where you can easily access it.

The installation must be performed in the following order:

- Make sure the Oracle Insurance Insbridge Framework Administrator (IBFA) is installed.
- Restore the Databases first. There are three databases that must be in place.
 - O IDC_Client – Holds the login and user information.
 - O IDC_System – Holds the contents and logic of questionnaires created in Palette.
 - O IDC_LOGS – Logging is optional, but recommended. Oracle Support may request information from this database if you run into an issue with O IDC
- Install the Engine application on the same server as IBFA.
- Install the Palette application on the same server as IBFA.
- Update the application pool.
- Update the virtual directory.
- Log in to the Engine application.
 - Create new user
 - Change sysadmin password

NOTE

It is important to note that O IDC cannot be installed unless the Insbridge Framework Administrator is installed first.

NOTE

If you encounter any errors when running the database scripts, a message window will be displayed. Additional information will be in a log file that will be created only when script errors are present. This log file will contain the files that are by causing the error, listed by the creation date. These files will still be present after the application is uninstalled.

RESTORE THE OIDC DATABASES

A New OIDC installation begins with the database restore. Unzip the OI DC_4.4.5_Database.zip on the machine where the database will be restored. There will be three backup files located inside of the zip, 445_BLANK_CLIENT.bak, OI DC_445_BLANK_SYSTEM.bak and OI DC_445_BLANK_LOG.bak. Park the backups in a location where you can access them.

You can leave the default names or change them to whatever name you want. It is not required but it is strongly suggested that the database file names be changed to something that defines the databases more accurately.

IMPORTANT

It is strongly recommended that any database modification be performed by a qualified database administrator (DBA). The database setup procedures and tasks require the skill set of a database administrator. If you are not a database administrator, please stop. Improper setup may result in unwelcome changes to the database. Please consult with a qualified database administrator before proceeding.

The database installer should have administrator rights on the machine where the database will be restored. SQL Server Management Studio must be installed.

1. Restore the OI DC_445_BLANK_CLIENT.bak, OI DC_445_BLANK_SYSTEM.bak and OI DC_445_BLANK_LOG.bak databases.
2. Set the client database compatibility level to: SQL Server 2005(90). This is required for Dynamic Customer List and Quote List. Right click the Client database → Properties→Options.

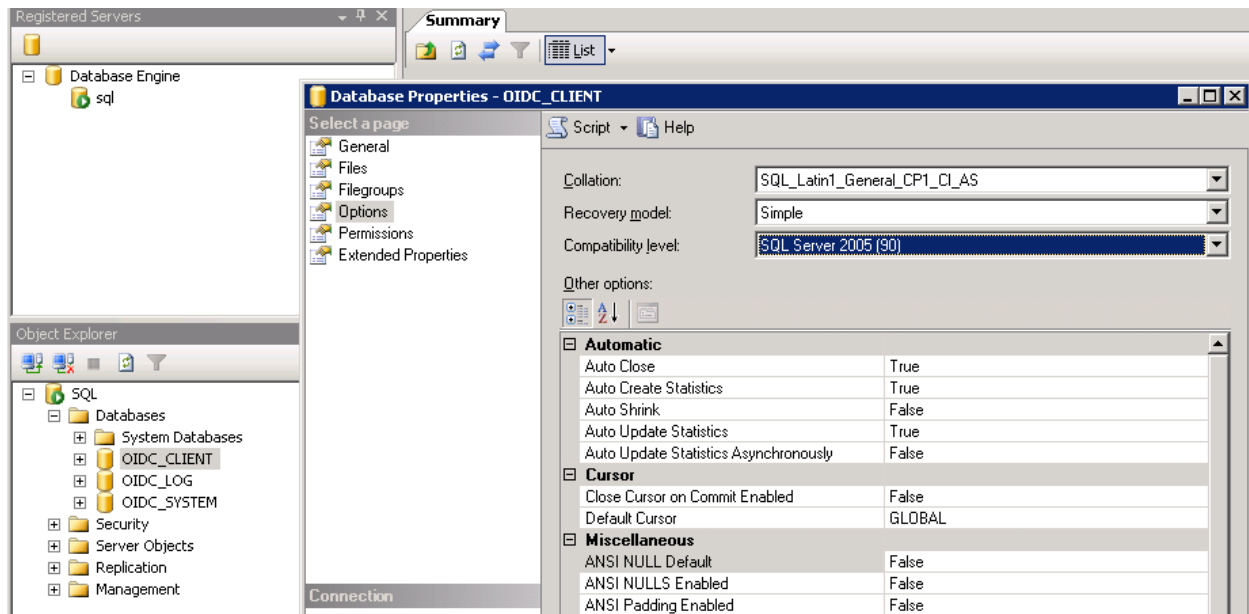


Figure 15 Setting Client Database to SQL Server 2005 (90)

3. Palette and Engine can be installed once the databases are restored. The installation of Palette and Engine will require:

- Database server name or URL
- Database name
- Login
- Password

NOTE

In the OIDC_445_Database.zip there is another zip file, DBUpdaterScripts.zip and a DBUpdaterInstall.msi file. Those files will not be needed for a new installation.

OIDC ENGINE INSTALLATION

Open the OIDC Engine folder.

During the installation, the installation program requires the installer have administrator rights on the machine where the install is occurring. Please close all open applications and run the setup.exe file located in the Engine file on the same machine as the IBFA.

NOTE

Engine and Palette must be on the same machine as IBFA. If Insbridge is not installed, OIDC will not be able to be installed.

The default directory structure of a NEW OIDC installation will be:
C:\Program Files\Oracle\IGBU\DataCapture. Previous installs, including updates, may be located under the Insbridge\Webs folder.

A different default directory structure can be selected by the installer.

A check of system requirements will be performed. Any missing component will result in an error message. For example, if the installation does not find .NET 4.0, you will be asked if you want to install this from Microsoft.

If all requirements have been met, a Welcome screen will be displayed.



Figure 16 Welcome to Installing OIDC

1. Please close all open applications and run the **setup.exe**. Click on **Next** to continue.

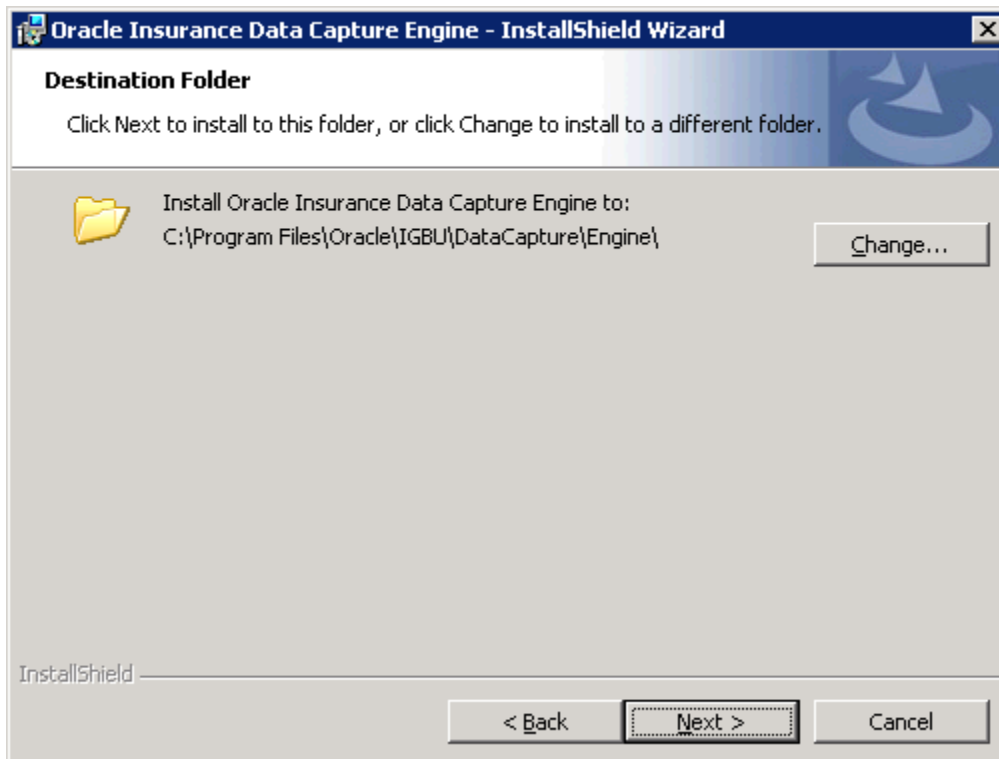


Figure 17 Selecting Installation Path

2. You have the option to select another installation directory. If you want another destination directory, browse for the directory you want to use. If the default installation directory is acceptable, Click **Next**.

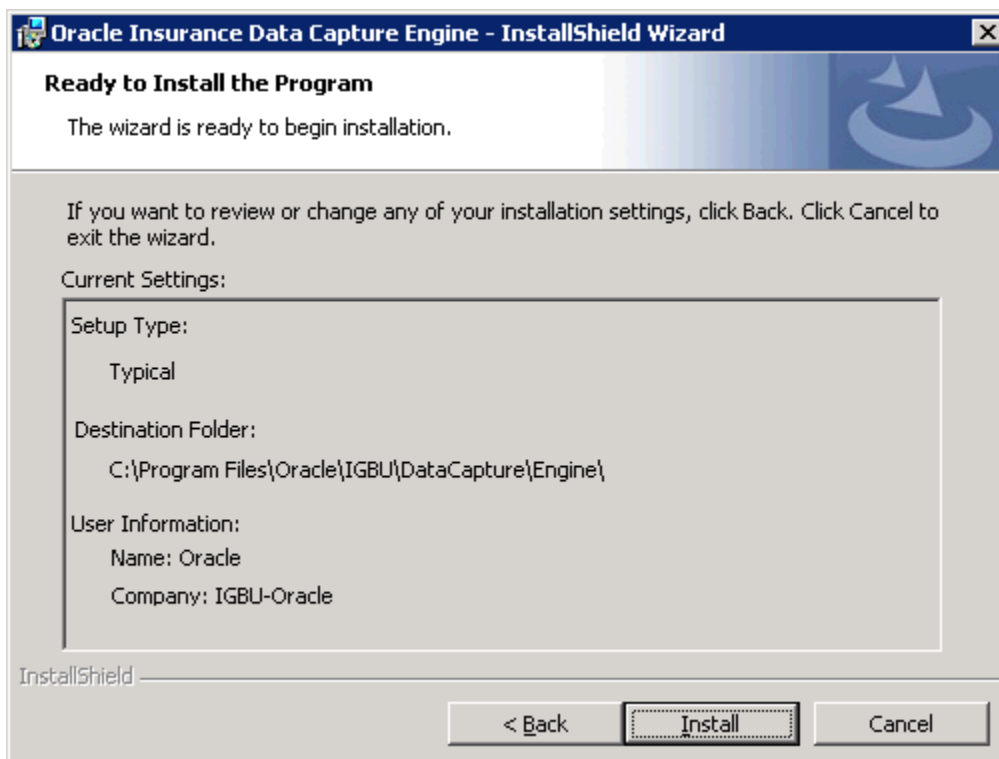


Figure 18 Ready to Install

3. An information screen will be presented. If the information is correct, click **Install**. A progress screen will be displayed.

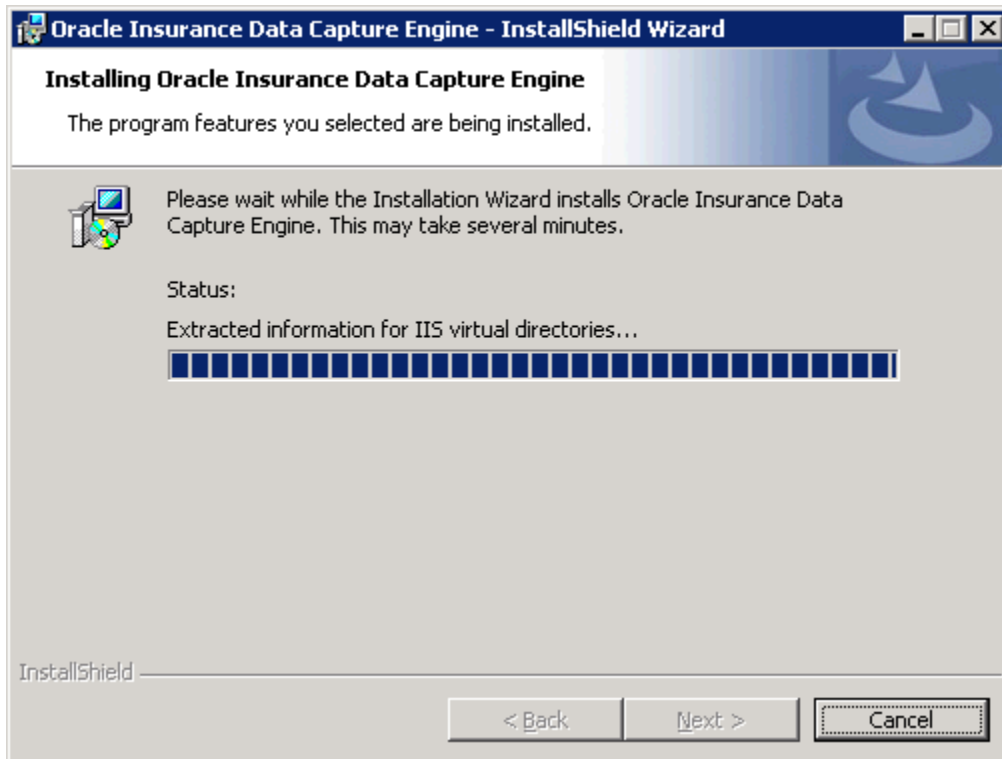


Figure 19 Engine Installation Progress

If the information is not correct, click **Back** to return to the previous screen. Make your changes and then install when you are ready

4. Enter in the database information. There will be three sections; one for System one for Client and one for Logs. Please complete all three.

Database Settings

Enter Database connection information here. Please note: It may take a while for the connection tests to finish if the servers are not accessible.

System Database

Server: SQL Server
Name: SystemDB
User: sa
Password: Test Connection

Client Database

Server: SQL Server
Name: ClientDB
User: sa
Password: Test Connection

Log Database

Server: SQL Server
Name: LOGDB
User: sa
Password: Test Connection

Continue

Figure 20 Entering Database Information

NOTE

Database connection information is validated at this point. If there is a problem, you must correct in order to continue. You also can check the database information in the web.config file. Please see Manually Updating Web.Config File.

5. When you are finished, click **CONTINUE**.

6. When the installation is complete, click **FINISH** to close the installer.

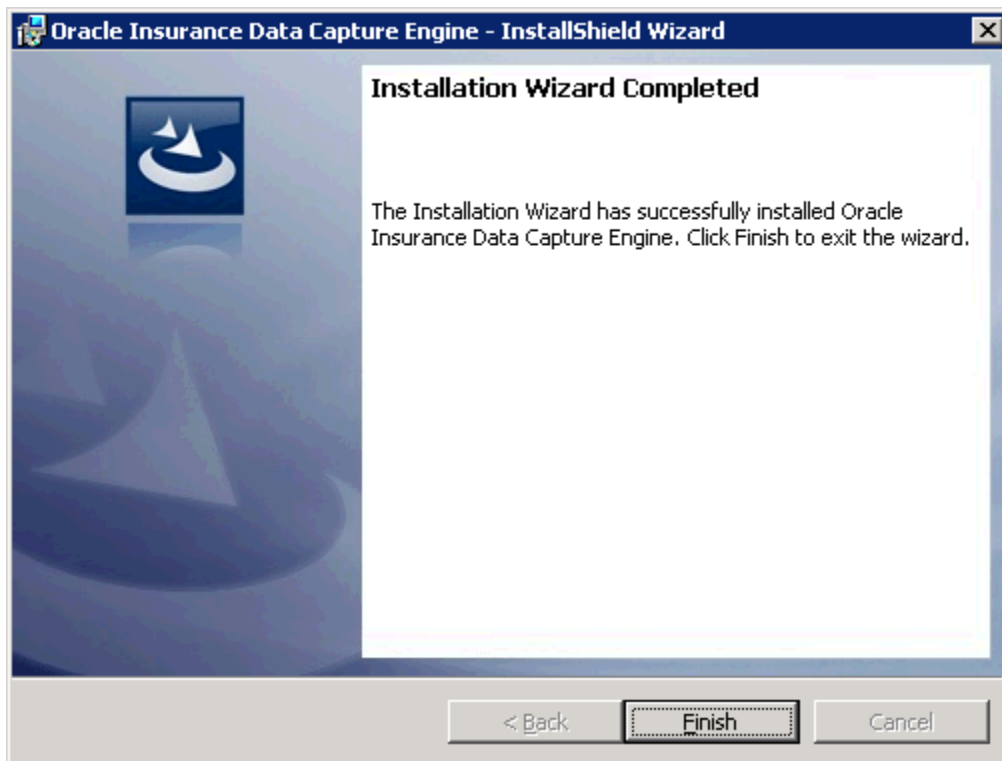


Figure 21 Completed Engine Installation

OIDC PALETTE INSTALLATION

Open the OIDC Palette folder.

During the installation, the installation program requires the installer have administrator rights on the machine where the install is occurring. Please close all open applications and run the setup.exe file located in the Palette file on the same machine as the IBFA.

NOTE

Engine and Palette must be on the same machine as IBFA. If Insbridge is not installed, OIDC will not be able to be installed.

The default directory structure of a NEW OIDC installation will be:
C:\Program Files\Oracle\IGBU\DataCapture. Previous installs, including updates, may be located under the Insbridge\Webs folder.

A different default directory structure can be selected by the installer.

A check of system requirements will be performed. Any missing component will result in an error message. For example, if the installation does not find .NET 4.0, you will be asked if you want to install this from Microsoft.

If all requirements have been met, a Welcome screen will be displayed.



Figure 22 Welcome to Installing OIDC

1. Please close all open applications and run the **setup.exe**. Click on **Next** to continue.

2. You have the option to select another installation directory. If you want another destination directory, browse for the directory you want to use. If the default installation directory is acceptable, Click **Next**.

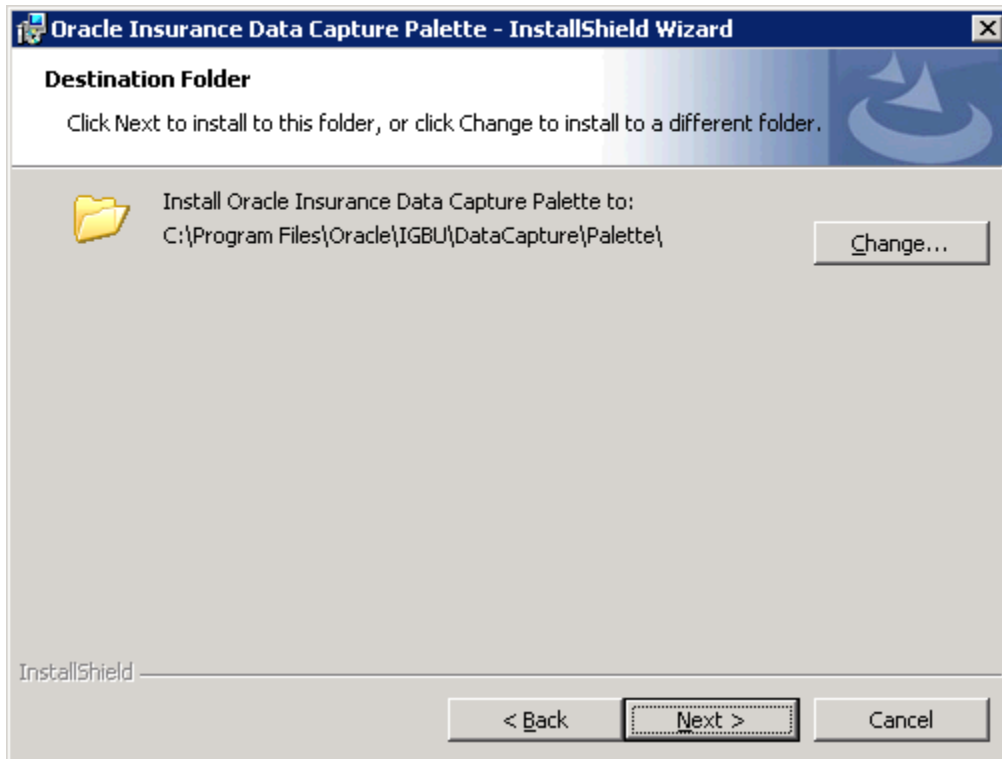


Figure 23 Selecting the Destination Folder

3. An information screen will be presented. If the information is correct, click **Install**.

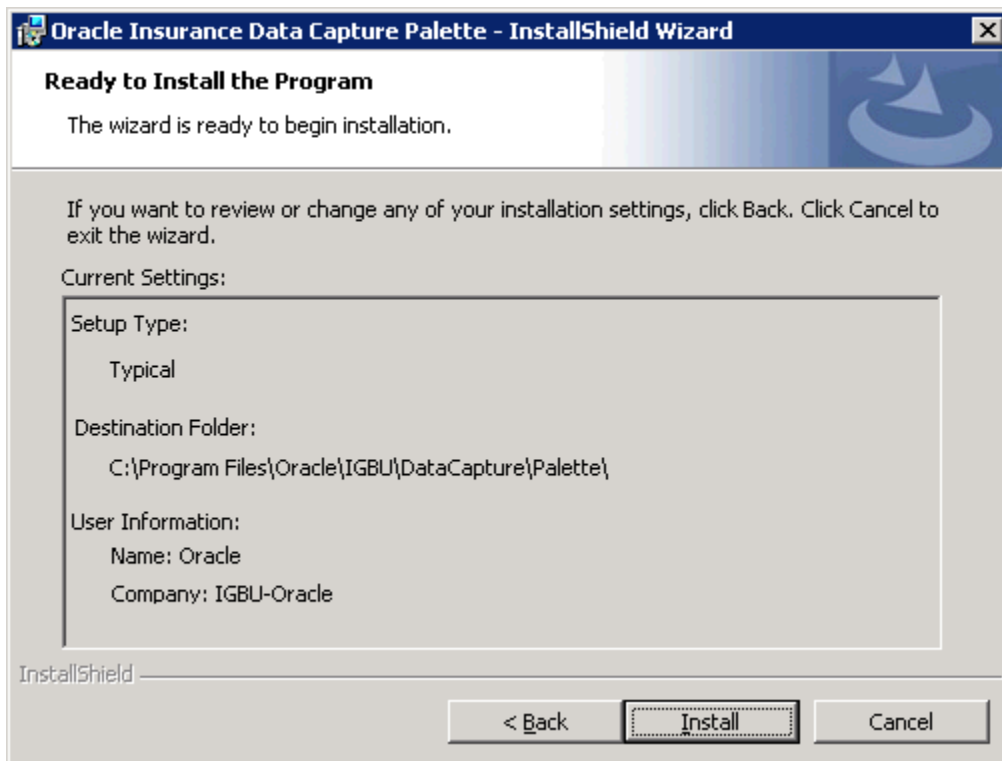


Figure 24 Ready to Install

If the information is not correct, click **Back** to return to the previous screen. Make your changes and then install when you are ready.

4. A progress screen will be displayed.

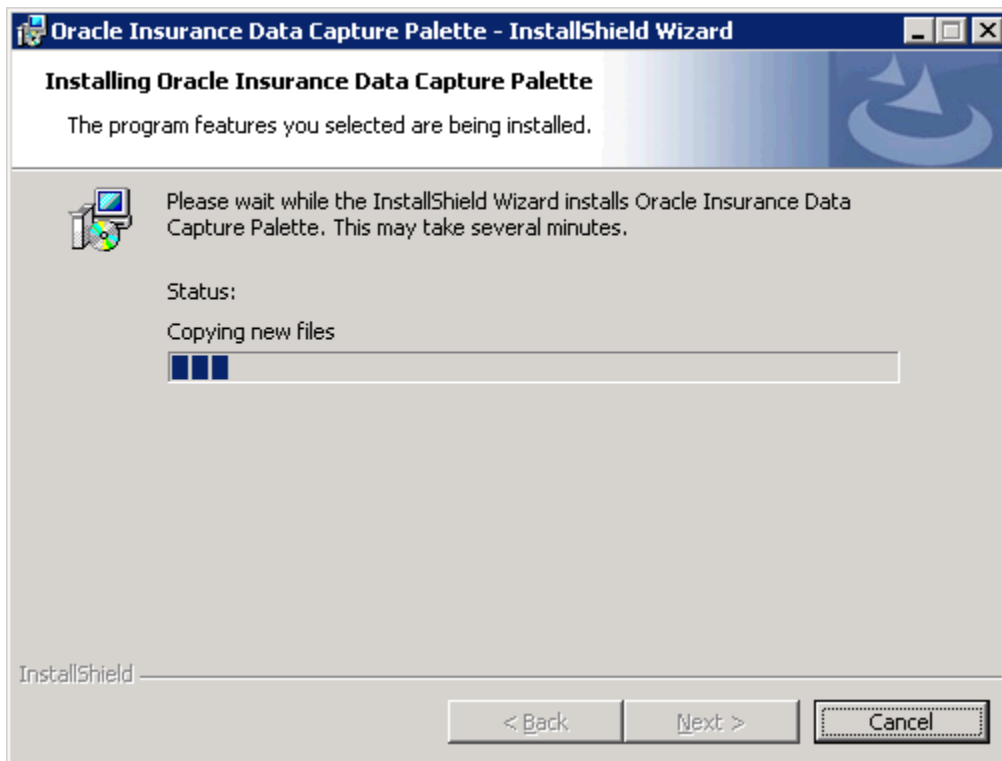


Figure 25 Engine Installation Progress

5. Enter in the System database information.

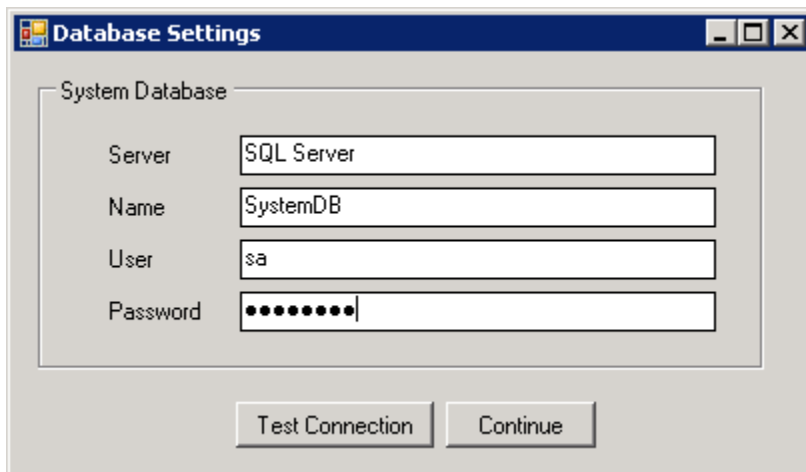


Figure 26 Entering Database Information

NOTE

Database connection information is validated at this point. If there is a problem, you must correct in order to continue. You also can check the database information in the web.config file. Please see Manually Updating Web.Config File.

6. When you are finished, click **CONTINUE**.

7. Click **Finish** to finish the install.

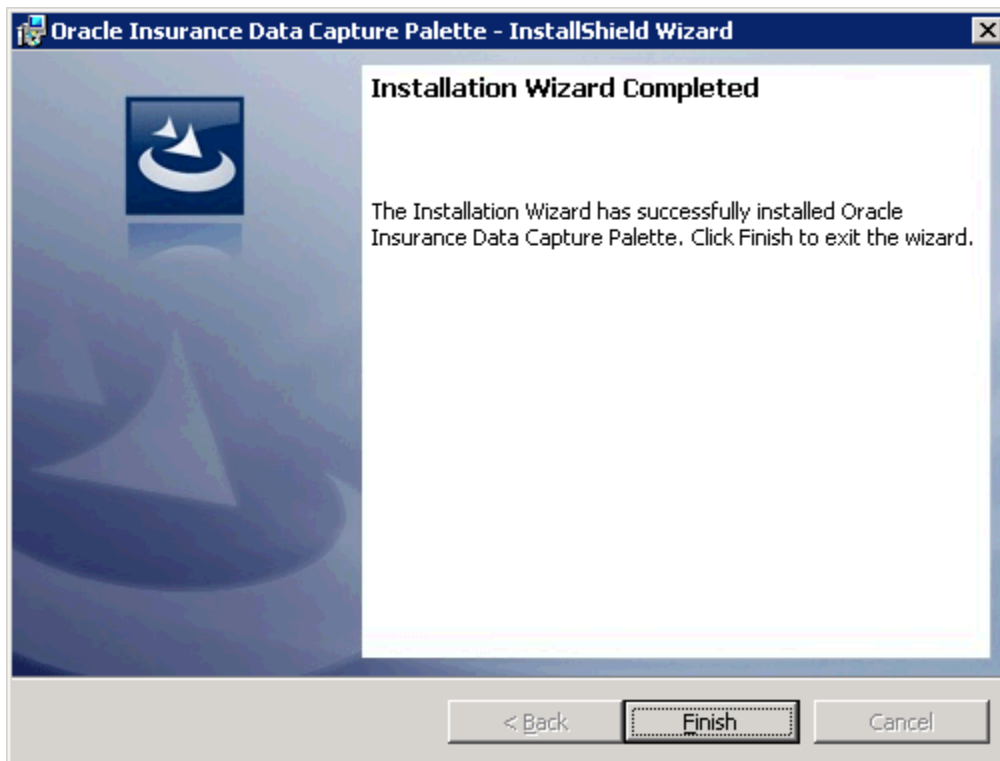


Figure 27 Completed Palette Install

SERVER CONFIGURATIONS FOR OIDC

An unstable session state may cause errors. To reduce the possibility of session state errors, you should create a separate OIDC application pool and then assign OIDCP and OIDCE to operate under this application pool.

The Virtual Directory should be deleted and re-created to reduce the possibility of session state errors. This should be done after the application pool.

Lastly, to allow for quicker server response times you will need to enable compression.

Updating the OIDC Application Pool

The application pool should be created first.

1. Click **Start** → **Administrative Tools** → select **IIS Manager**.
2. Expand the **Local Computer** and select **Application Pools**. Right click and select **New** → **Application Pool**.

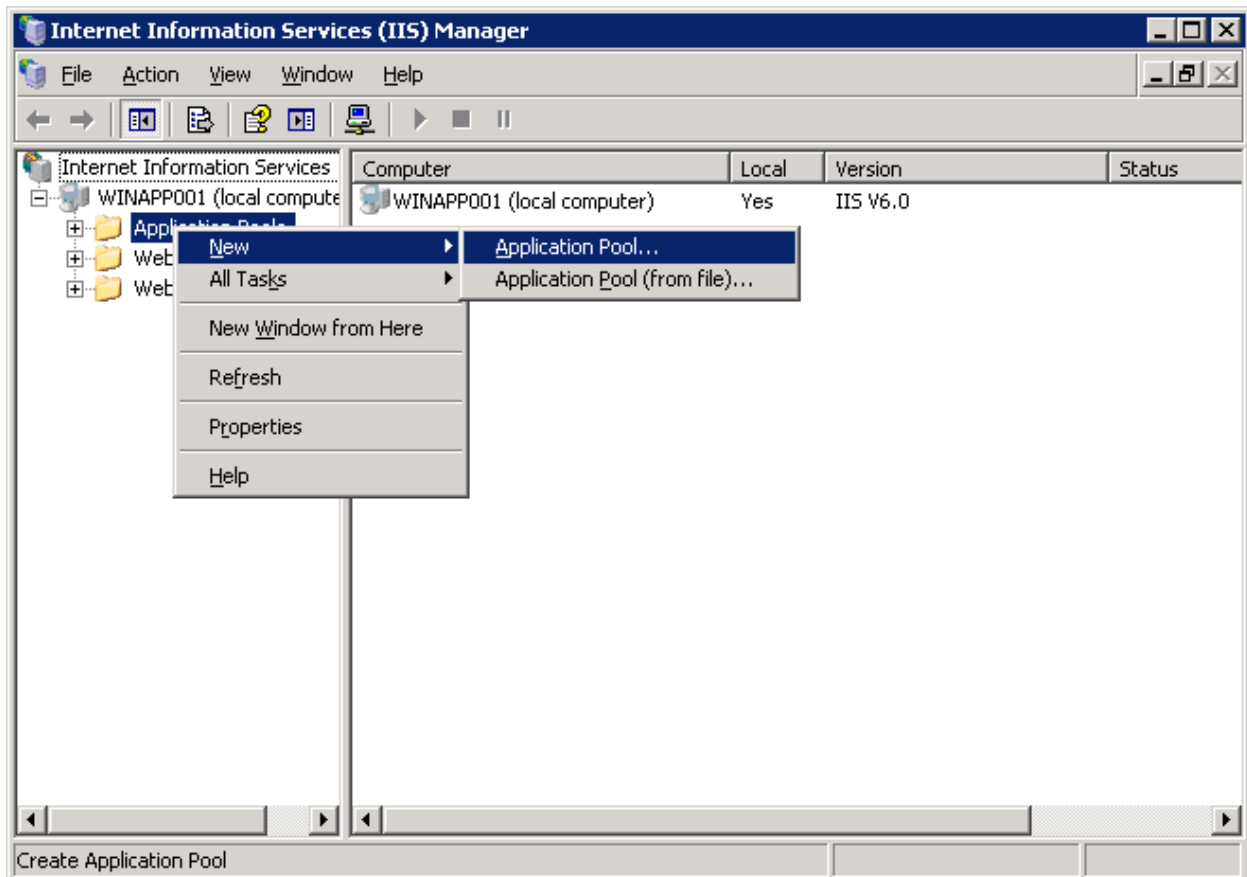


Figure 28 Navigating to Application Pool

3. Enter “**OIDC**” for the Application pool ID and click **OK**. You will be returned to the IIS screen. Your new application pool will be listed.

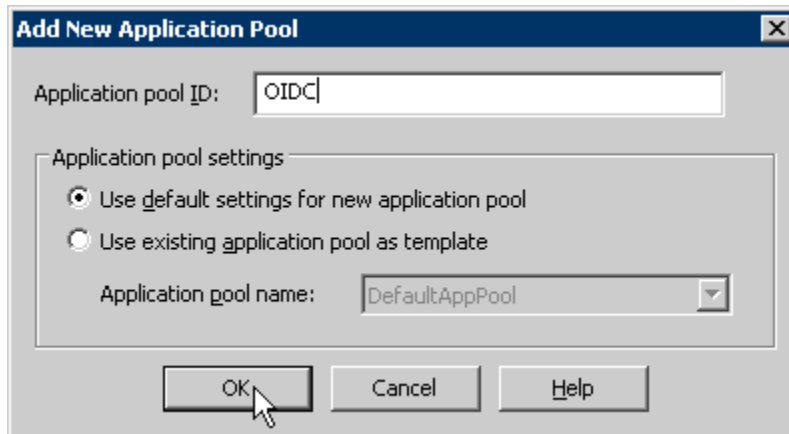


Figure 29 Creating a New Application Pool

4. Right click the OIDC Application Pool you created and select **Properties**.

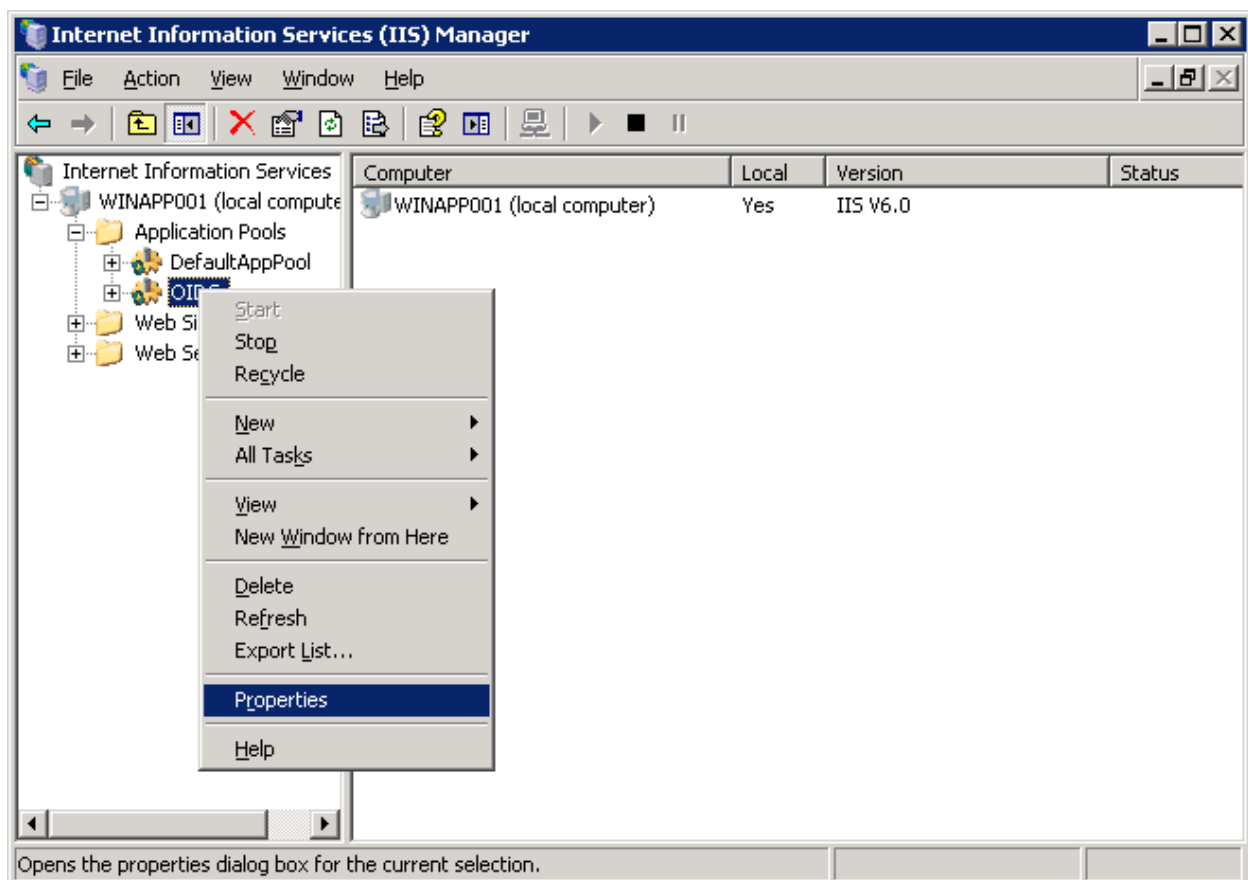


Figure 30 Selecting Application Pool Properties

5. Click the Performance tab and verify that **Idle Timeout** and **Request queue limit** are unchecked. Click **Apply**, and then **OK**. You will be returned to the IIS screen.

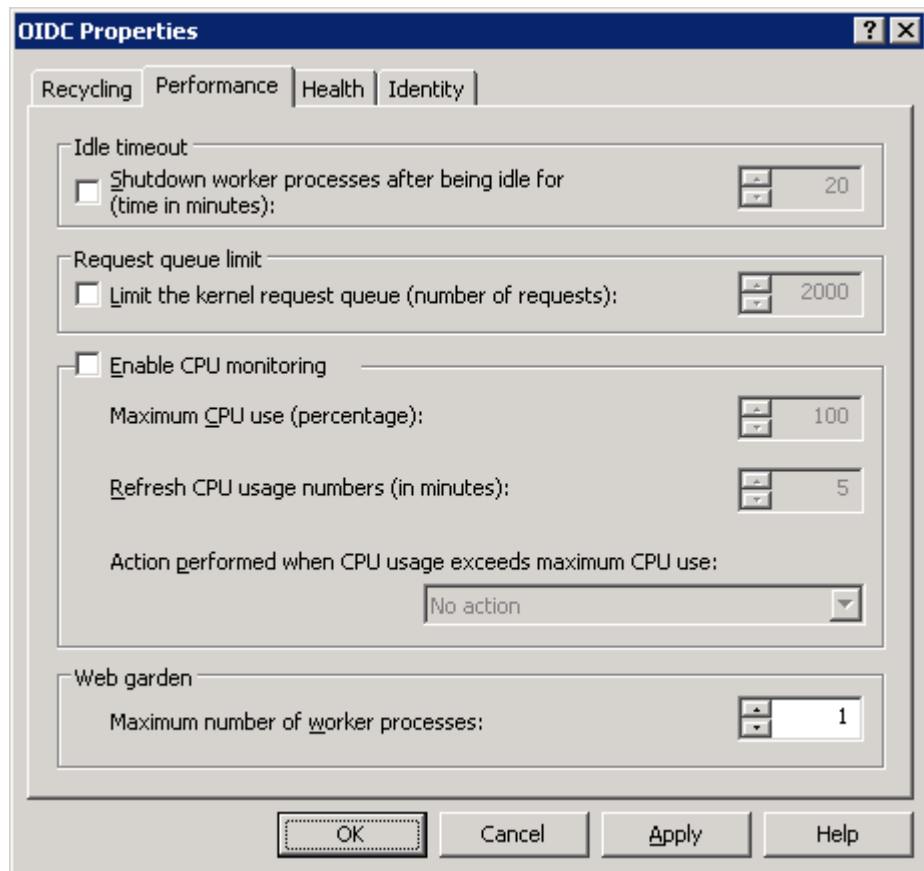


Figure 31 Setting Performance Options

Updating the OIDC Virtual Directory

The Virtual Directory should be deleted and re-created.

1. Click **Start** → **Administrative Tools** → select **IIS Manager**.
2. Expand the **Local Server** → **Web Sites** → **Default Web Site**, select **OIDCP**.
3. Right click and select **Delete**.

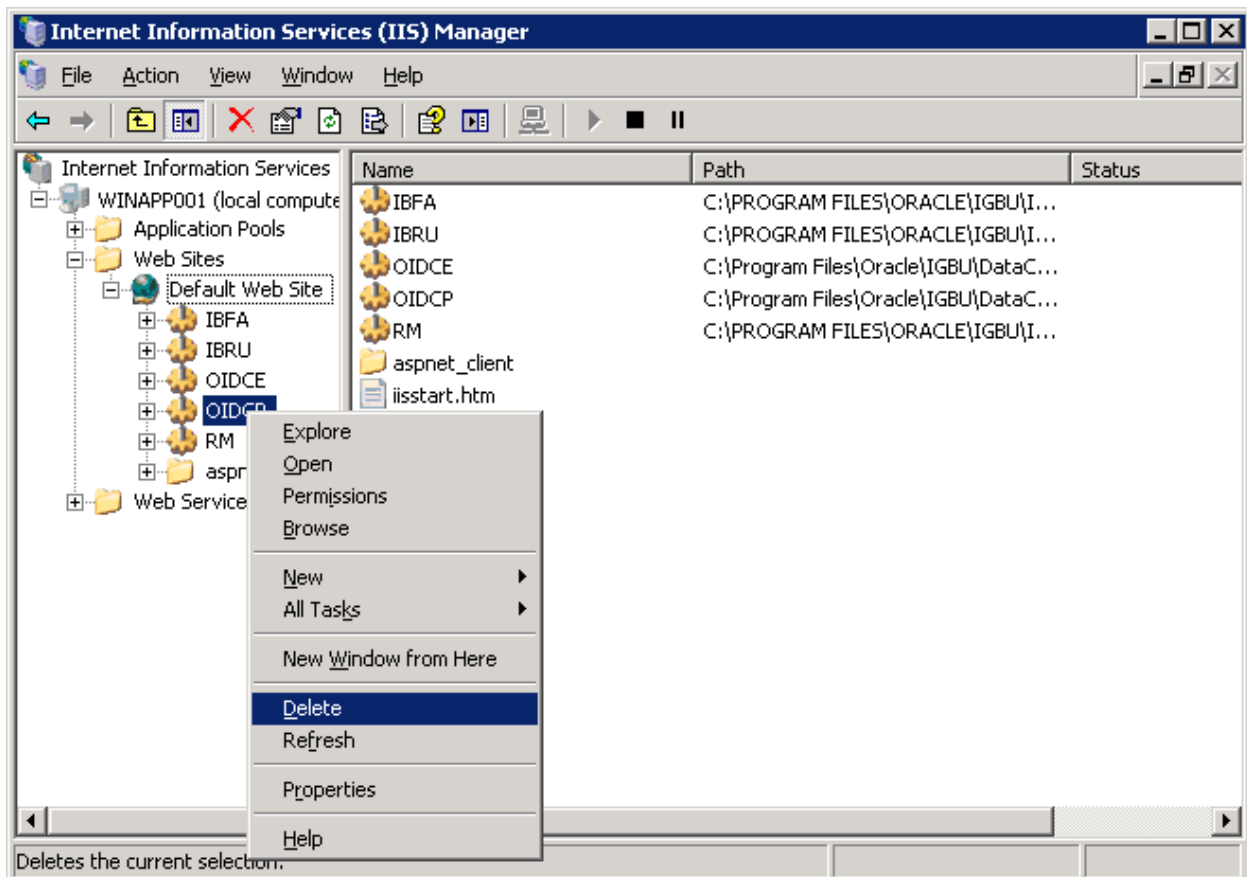


Figure 32 Deleting the Virtual Directory

4. You will be asked to confirm your deletion. Select **Yes** to delete.
5. Stay in IIS Manager. Under **Local Server** → **Web Sites** → **Default Web Site**, select **OIDCE**.
6. Right click and select **Delete**.
7. You will be asked to confirm your deletion. Select **Yes** to delete.

8. Stay in IIS Manager. Under **Local Server** → **Web Sites**, select **Default Web Site**, right click and select **New** → **Virtual Directory**.

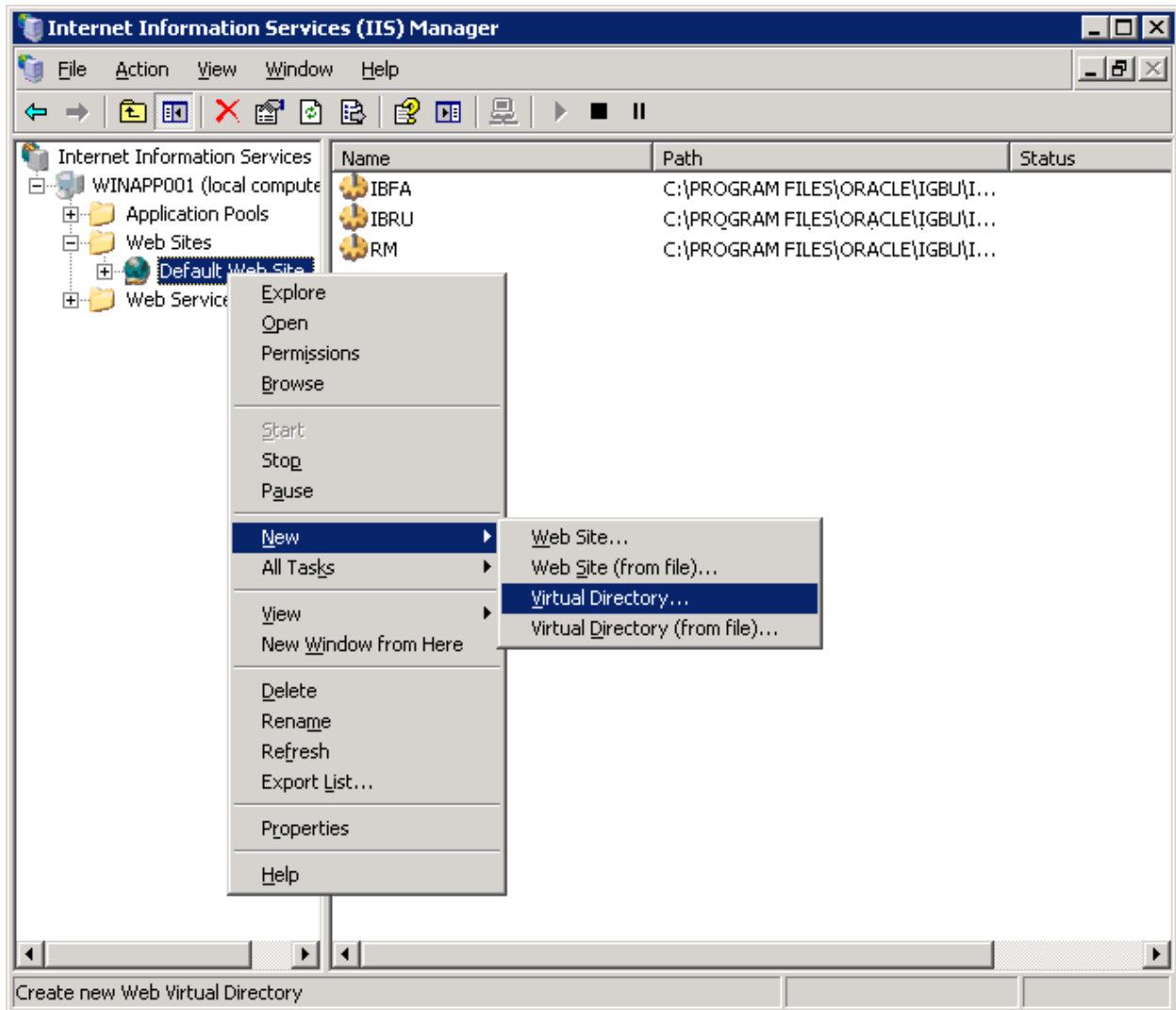


Figure 33 Creating New Virtual Directory

9. The Virtual Directory Wizard will be displayed. Click **Next** to continue.



Figure 34 Virtual Directory Wizard

10. Enter “OIDCE” for the Alias name. Click **Next** to continue.

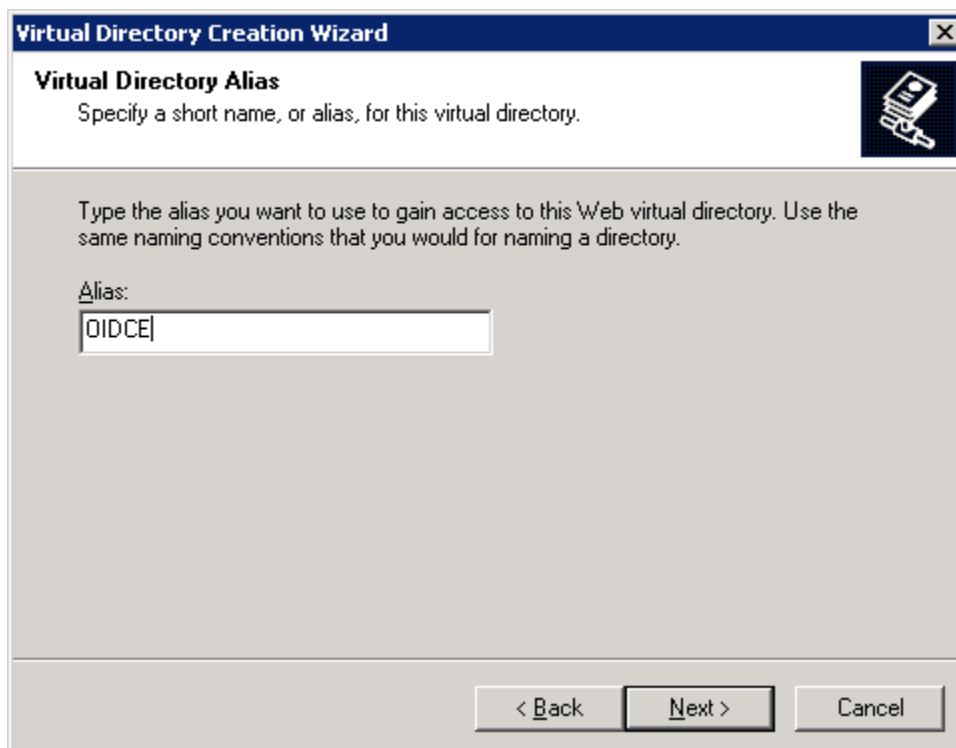


Figure 35 Creating a New Application Pool Alias

11. Enter the directory path or click Browse to select the path of OIDC Engine. Click **Next**.

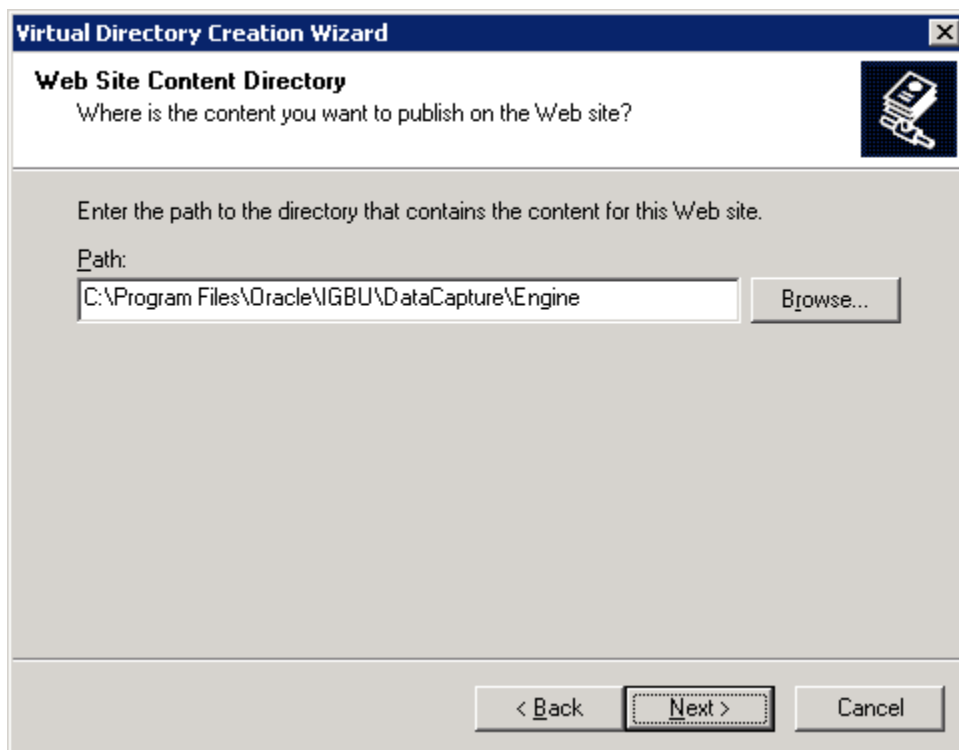


Figure 36 Selecting the Directory Path

12. Select **Read**, **Run scripts** and **Execute**. Click **Next**.

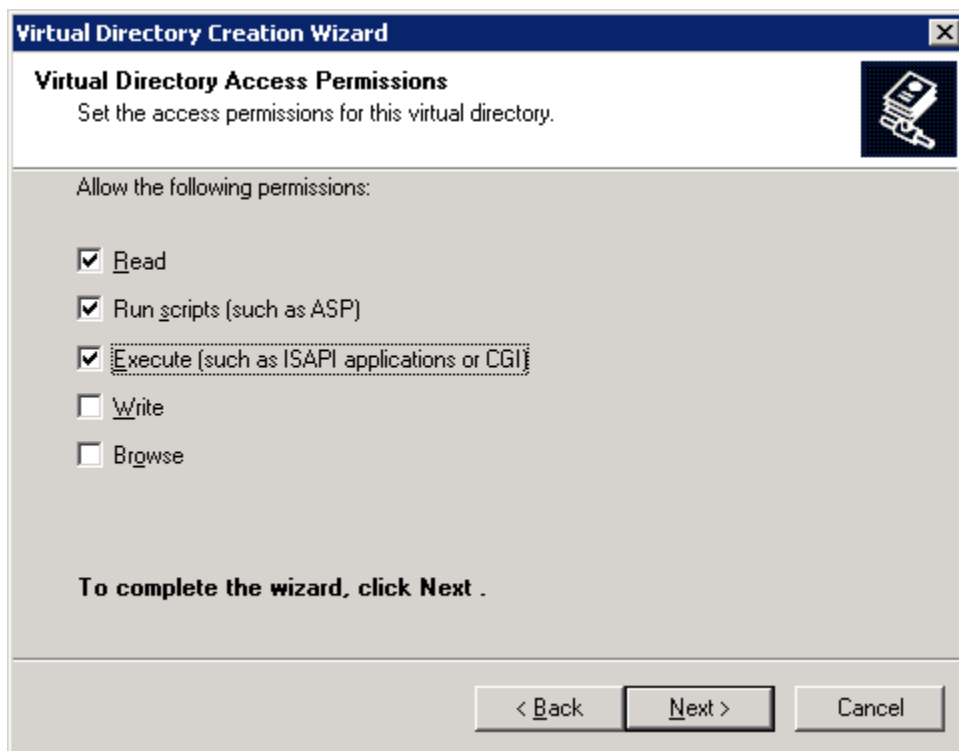


Figure 37 Setting Performance Options

13. Click **Finish** to create the virtual directory.



Figure 38 Finish Creating Directory

14. Stay in IIS Manager. Under **Local Server** → **Web Sites** → **Default Web Site**, select the newly created **OIDCE**. Right click and select **Properties**.

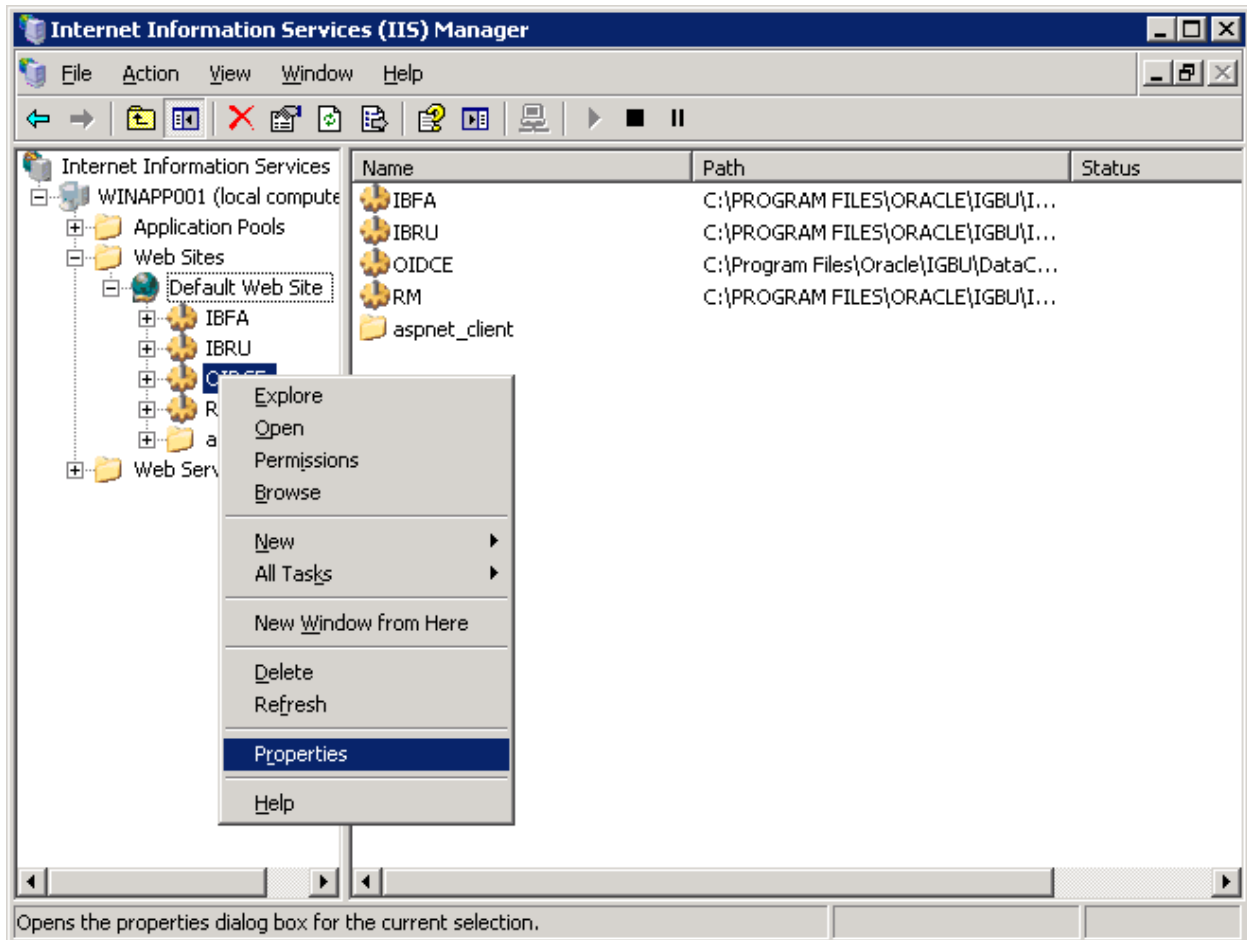


Figure 39 Selecting Virtual Directory Properties

A separate window will be displayed.

15. On the Virtual Directory tab, select the **OIDC Application Pool**.

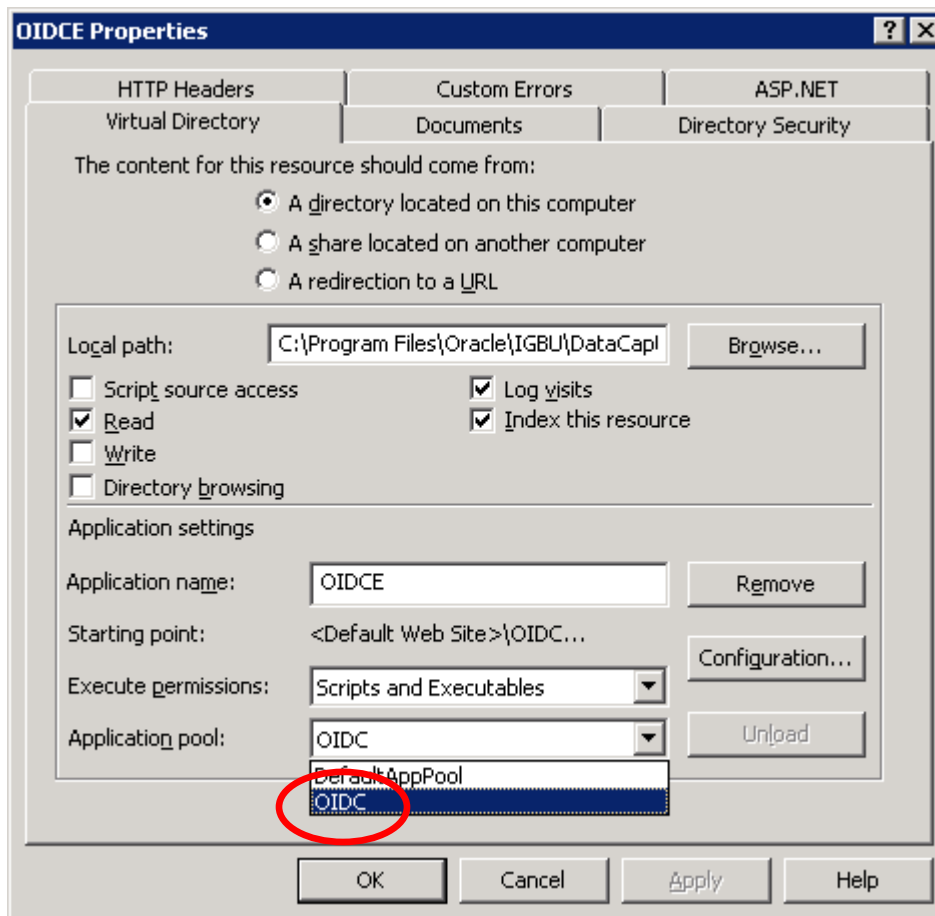


Figure 40 Selecting the OIDC Application Pool

16. On the Documentation tab, make sure that **default.aspx** is listed. It is recommended that you delete the other default content pages, but it is not required.

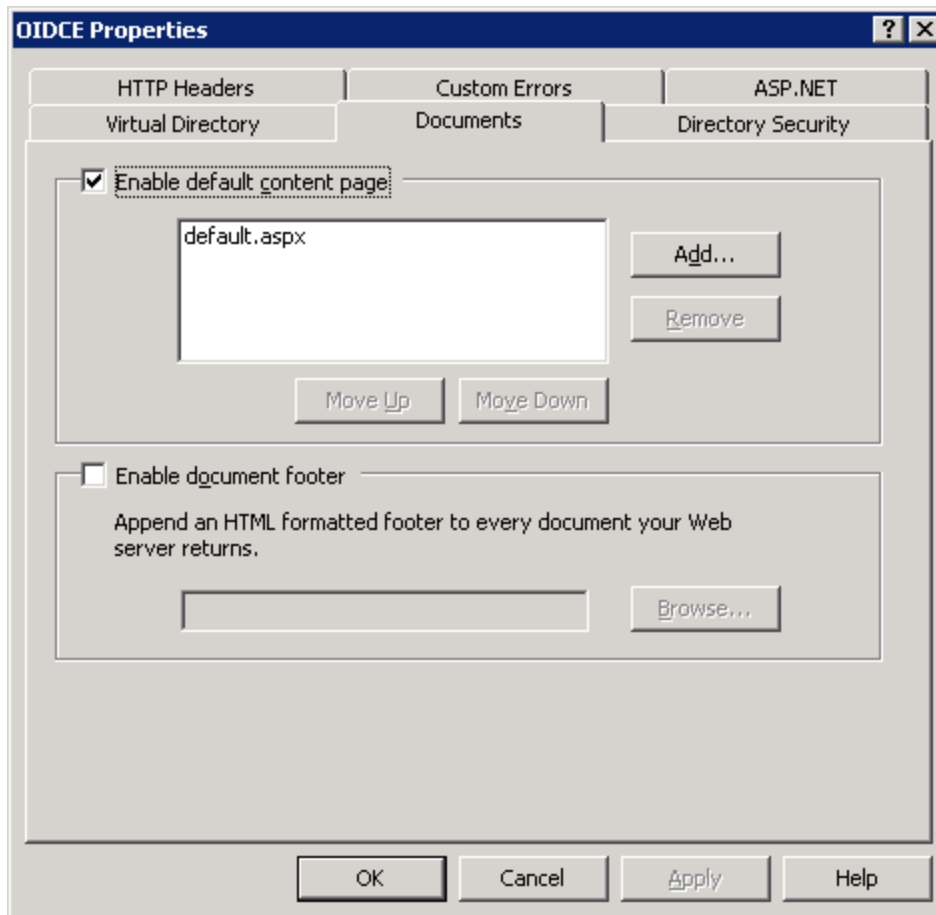


Figure 41 Setting the Default Content Page

17. On the Directory Security tab, click Edit to open the Authentication Methods. Verify that Enable anonymous access is checked.

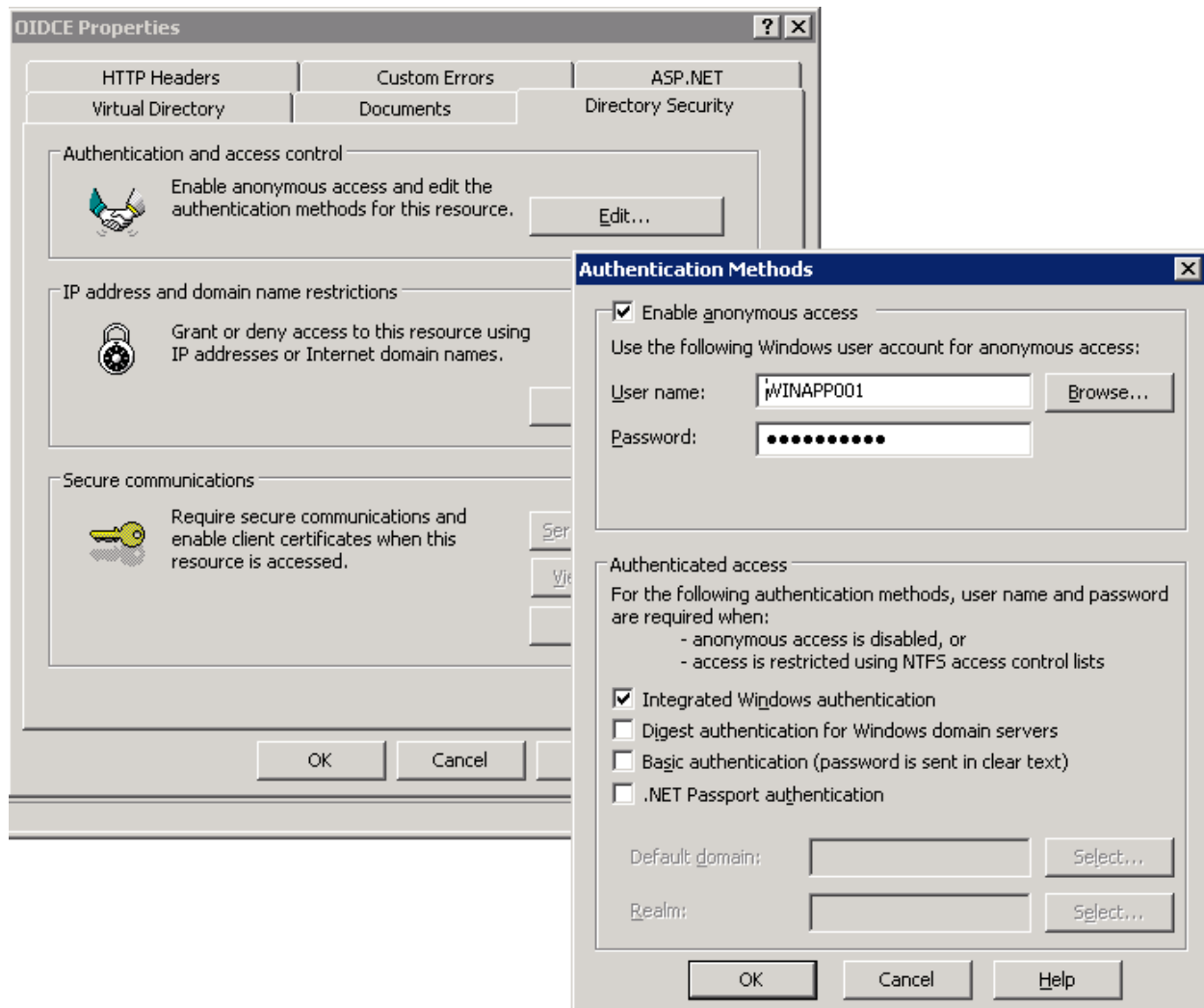


Figure 42 Verifying Anonymous Access

18. On the ASP.NET tab, select ASP 4.0.

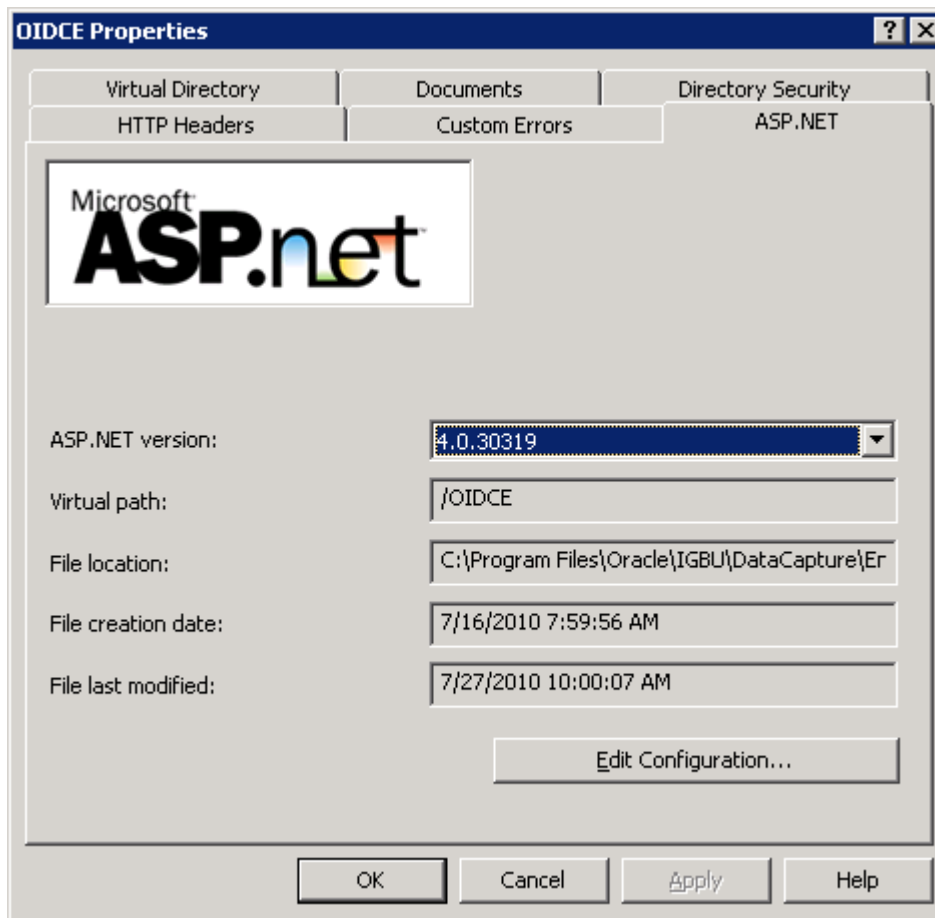


Figure 43 Selecting ASP.NET 4.0

19. Click OK to save your selections.
20. Repeat the process for **OIDCP**. Create a new Virtual Directory and select the proper settings.
21. After both Virtual Directories have been created and set, open Internet Information Services (IIS) Manager in the administration tools.

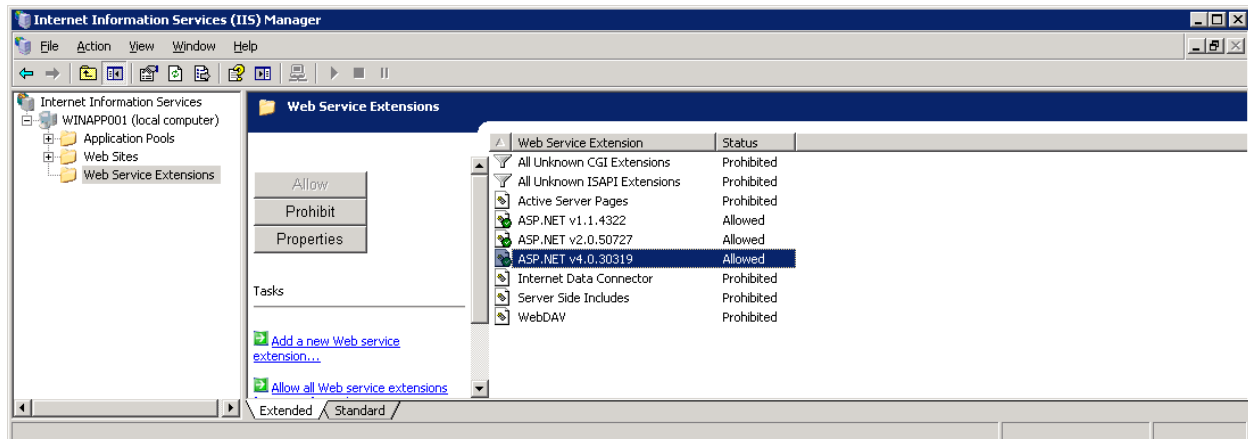


Figure 44 Allowing ASP.NET 4.0

22. Verify that **ASP.NET 4.0** is allowed.

Settings for Compression

The last item to update is compression settings.

The Virtual Directory should be deleted and re-created.

1. Click **Start** → **Administrative Tools** → select **IIS Manager**.
2. Expand the **Local Server** and select **Web Sites**.
3. Right click and select **Properties**.

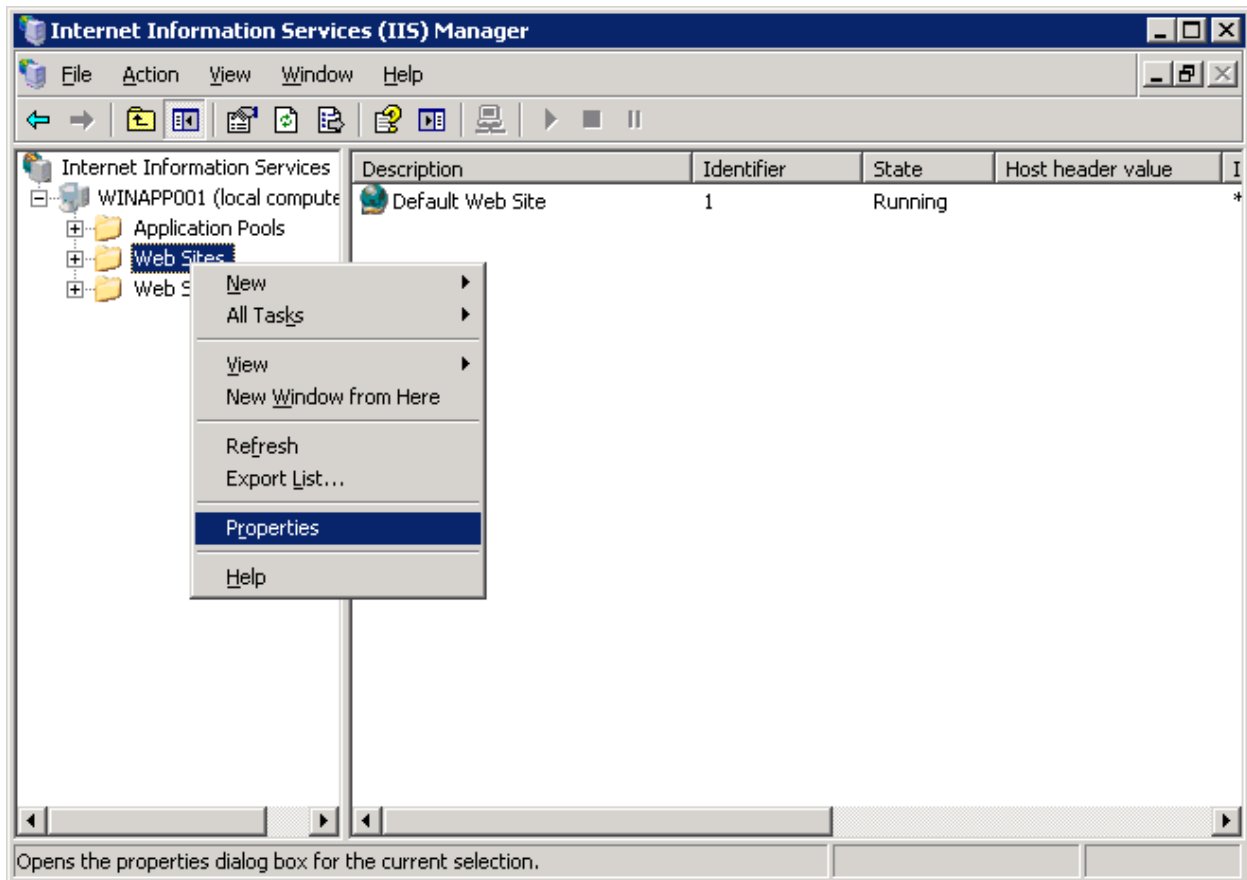
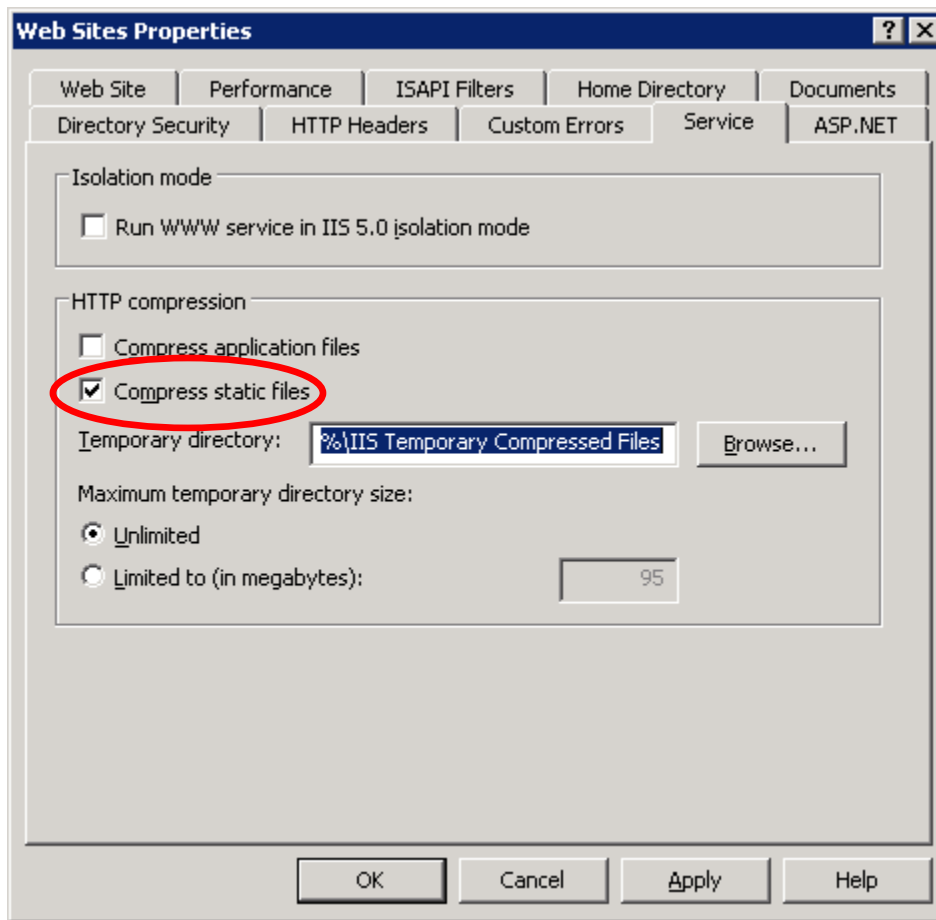


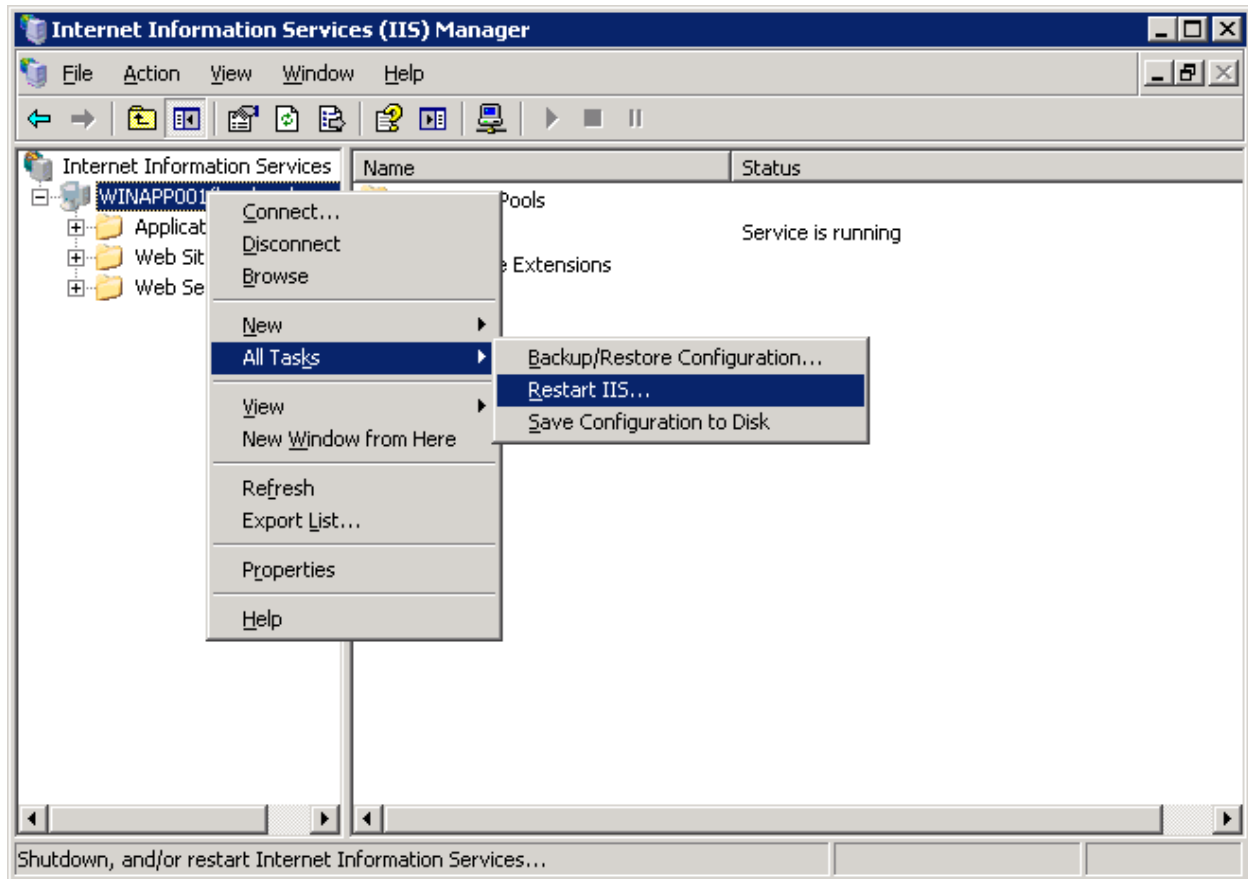
Figure 45 Selecting Properties

4. On the Properties screen. Select the **Service** tab.



5. Check **Compress static files**.
6. Click **Apply**.
7. Click **OK** to close the window.

8. After you have created an OIDC Application Pool, deleted and created virtual directories, and set compression, you should restart IIS. On the IIS screen, right click **All Tasks** → **Restart IIS**.



9. Click **OK** to restart.

MANUALLY UPDATING WEB.CONFIG FILE

You can manually update the connection string information in the web.config file. If you were able to complete the connection string information in the installation, you do not need to perform this step. If you are experiencing trouble with the application, you can manually check and update the connection string information.

NOTE

It is strongly recommended that you make a copy of the current web.config file before you make any changes. In the event you need to do a rollback, you will have a working copy to restore.

1. Once the databases have been restored, return to the server where Engine and Palette were installed. Follow the local path to the location of Engine. The local path will default to the initial installation path or a path selected by the installer. Two common paths are:

C:\Program Files\Oracle\IGBU\DataCapture\Engine

C:\Program Files\InsBridge\Webs\OIDC\iQuestionnaire (for older installations)

2. Open the **web.config** file in Notepad.
3. Go down to the **connectionStrings** section. You will have to manually enter in the connection string information. There are four fields in each of the four connection strings that must be completed.

The highlighted fields in the example below demonstrate where you will need to make an entry.

```
<connectionStrings>
  <add name="AgentRaterSystemDatabase" connectionString="Password=Password;User
ID=sa;Initial Catalog=OIDC_SYSTEM;Data Source=SERVER;"
  providerName="System.Data.SqlClient" />
  <add name="AgentRaterClientDatabase" connectionString="Password=Password;User ID=
sa;Initial Catalog=OIDC_CLIENT;Data Source=SERVER;"
  providerName="System.Data.SqlClient" />
  <add name="AgentRaterLoggingDatabase" connectionString="Password=Password;User
ID=sa;Initial Catalog=OIDC_LOG;Data Source=SERVER;"
  providerName="System.Data.SqlClient" />
  <add name="AgentRaterSystemDatabaseEF"
connectionString="metadata=res://*/Data.EFSystemDB.csdl|res://*/Data.EFSystemDB.ssdl|
res://*/Data.EFSystemDB.msl;provider=System.Data.SqlClient;provider connection
string=&quot;Password=Password;User ID=sa;Initial Catalog=OIDC_SYSTEM;Data
Source=SERVER;&quot;;" providerName="System.Data.SqlClient" />
</connectionStrings>
```

- **Password** is the password for the database user.
- **UserID** is the user ID for the database. It is recommended that you use the sa login and password.
- **Catalog** is the name of the database. This name can be any name you chose.
- **DataSource** is the name or IP address of the server where the database is located.

4. **Save** your changes. No error message will be thrown for incorrect entries.

To test your entries, try accessing the application. If you cannot access the application, please re-check your entries.

CONFIGURING OIDC

Open an Internet Explorer web browser either remotely on the local OIDC web server and browse to the following location, replacing SERVERNAME with the actual server name:

<http://SERVERNAME/OIDCE/>

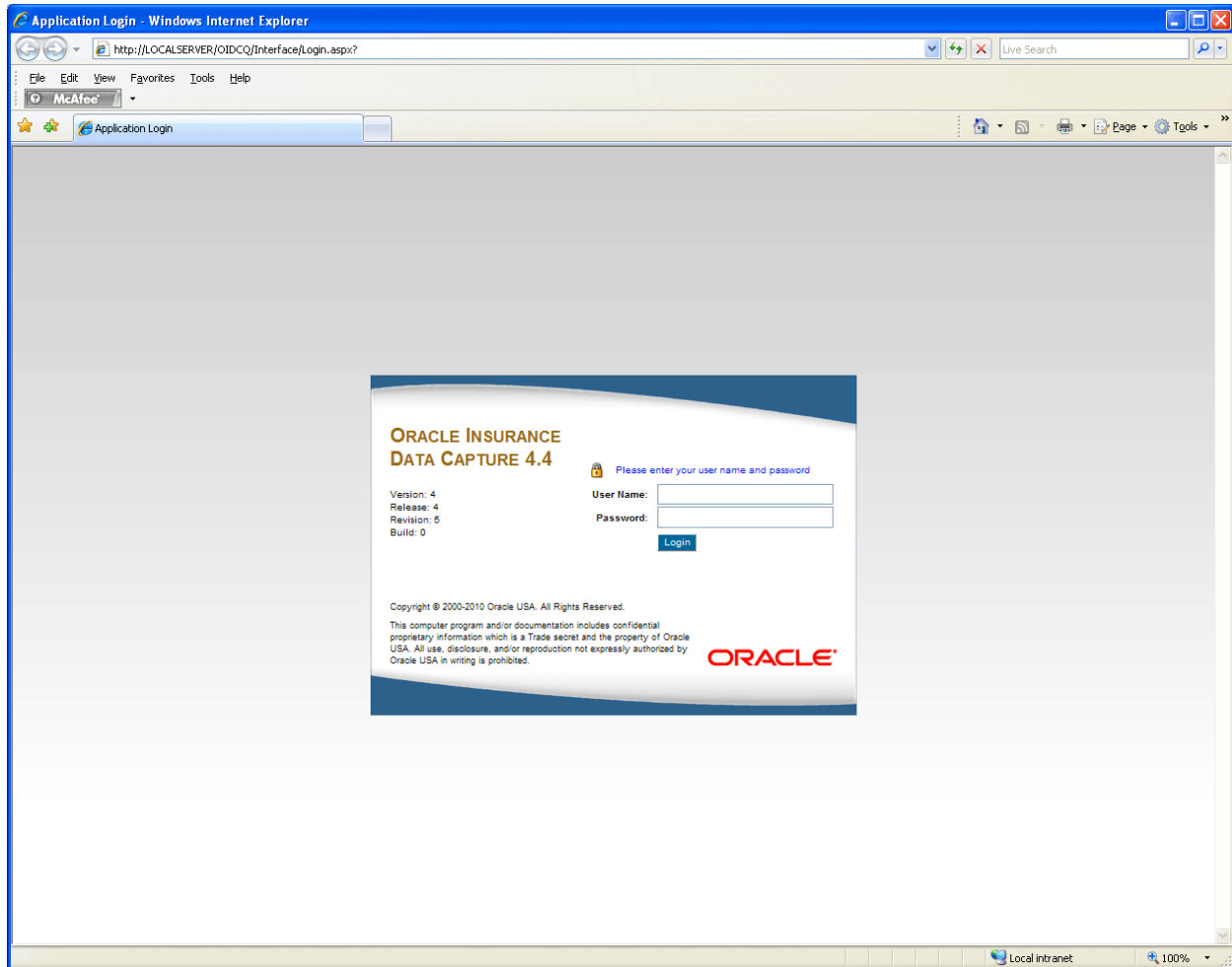


Figure 46 OIDC Home

Default user login is sysadmin with a password of password.

Oracle Insurance Data Capture 4.4 - Windows Internet Explorer

http://YOURSERVER/OIDCQ/Interface/AGENT_WORKBENCH/Application.aspx

McAfee

Oracle Insurance Data Capture 4.4

Version: 04.04.05 Domain: System User: sysadmin log out

Workbench Customers Quotes Administration Security My Profile Help

Administration

Variables Rating Services Local IBFA Localhost: LOCAL01

General Settings

Subscriber (Extension) ID: Default

Line of Business: AUTO

Customer List View: ☒ Enable

Lead ID Prefix: IQ

Service Interfaces

IBFA Connector Interface URL: http://localhost/ibfa/connectors/sofrater.asm

Rating Environment

Environment Name: [RATINGENVIRONMENTVALUE]

Fulfillment Queue: FormatName.DIRECT=OS:SMU/private\$ingage

Rate Request Queue: .private\$insbridge-broker request queue

Rate Response Queue: .private\$insbridge-broker response queue

Database Connections

System DB Server Name: YOURSERVER

System DB Database Name: OIDC_SYSTEM

System DB User Name: sa

System DB Password (Leave blank if not changing connection):

Client DB Server Name: YOURSERVER

Client DB Database Name: OIDC_CLIENT

Client DB User Name: sa

Client DB Password (Leave blank if not changing connection):

Web Directories

Agent Interface Root Directory: /OIDCQ

InsBridge WebApp Base Directory: /OIDCQ/WebBase/IBWebBase/v1.0

QuoteTools WebApp Base Directory: /OIDCQ/WebBase/QuoteToolsWebBase

Refresh Search Data Apply Cancel

Local intranet 100%

Figure 47 OIDC Admin

After you enter the application, click the Administration link.

Verify that the information on the Administration page is the correct information. If not, please make any adjustments and click **Apply**.

Updating SysAdmin Password

To update the SysAdmin password, click on the **My Profile** link. The SysAdmin information will be displayed. Update your password and Save.

Please change the default sysadmin password or go to security and create your own user login and password.

UPGRADE INSTALLATION

To update an existing OIDC application you will need these files from E-Delivery:

- OIDC_445_Database.zip
 - DBUpdaterInstall.msi
 - DBUpdateScripts.zip
- OIDC_445_Palette.zip
- OIDC_445_Engine.zip

Upgrading to 4.4.5 from 4.2.0, 4.2.1, or 4.3

The first step when updating the OIDC application is to remove the previous database updater using the Add/Remove programs. Then run the database updates. The database installation program requires the installer have administrator rights on the machine where the databases are located. SQL Server Management Studio must also be installed.

NOTE

It is recommended that you make a copy of the current databases before you make any changes. In the event you need to do a rollback, you will have a working copy to restore.

1. On the server where OIDC is installed, **Start → Control Panel → Add or Remove Programs**.
2. Locate the **OIDC DBUpdater** and remove the program. If you want, you can delete the previous updater file out of Program Files. The location will be the initial installation path, for example C:\Program Files\Oracle\OIDC DBUpdater.
3. Make a backup copy of the web.config from the server where Questionnaire and Designer originally were installed. Follow the local path to the location of Questionnaire. The local path will default to the initial installation path or a path selected by the installer. Two common paths are:

C:\Program Files\Oracle\IGBU\DataCapture\Questionnaire

C:\Program Files\InsBridge\Webs\OIDC\Questionnaire

This file will need to be restored at the end of the upgrade.

4. Prior to running the database updates, please have the following information ready:
 - Database server name or URL
 - Database name
 - Login
 - Password

5. Unzip the OI DC_445_Database.zip. There are two zip files, DBUpdaterScripts.zip and OI DC_445_Database.zip and a DBUpdaterInstall.msi file. The OI DC_445_Database.zip will not be needed for an upgrade.
6. Unzip the DBUpdaterScripts.zip to a location that you can access. This file will be used to update the databases on the SQL Server machine. Make note of the location. You will need this information later on.
7. Run the DBUpdaterInstall.msi. It is recommended that you run this installation on the same machine as OI DC however, you can run this installation on any machine.

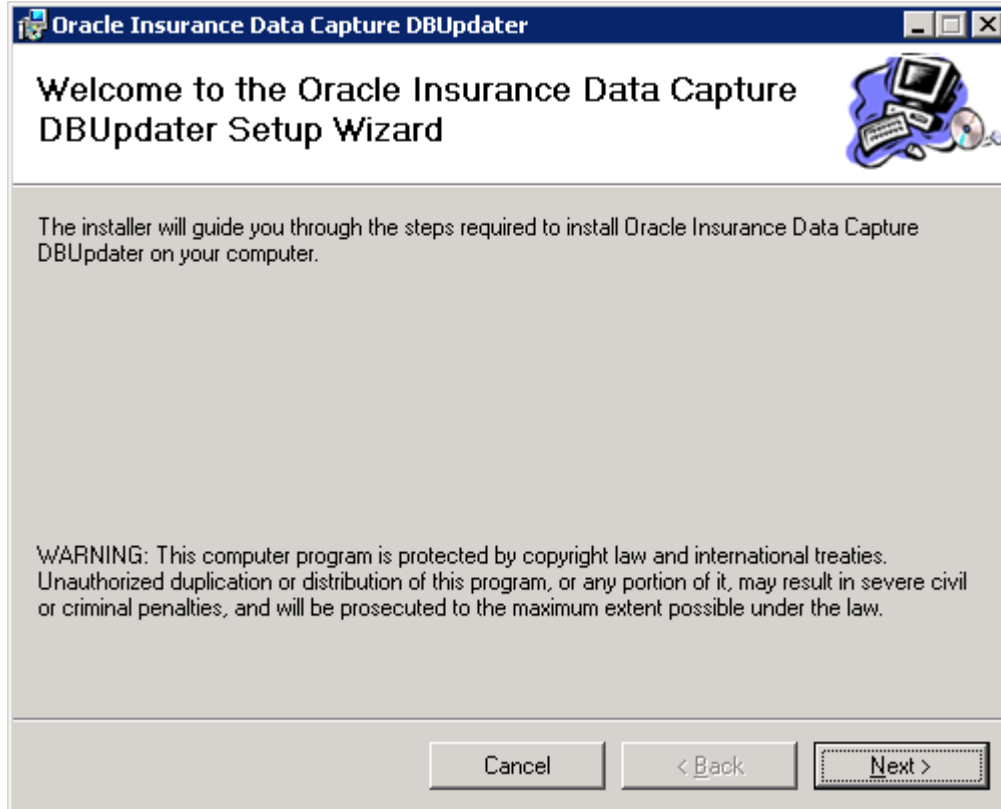


Figure 48 Database Welcome

4. Click **Next** to continue.

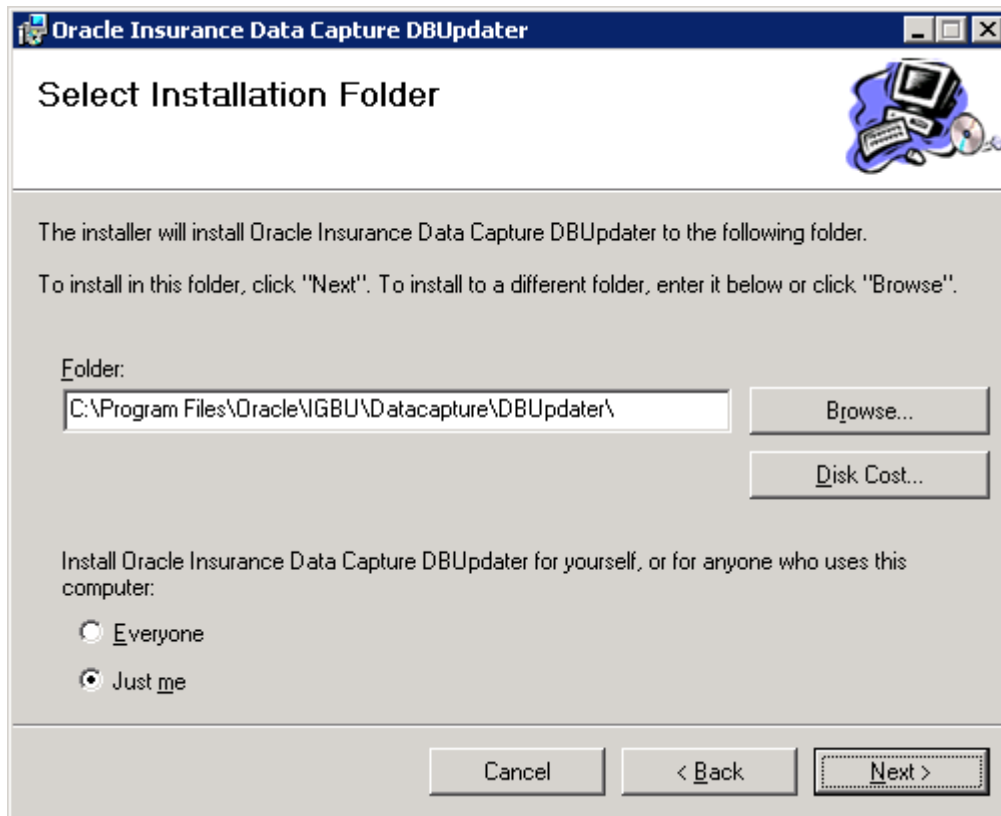
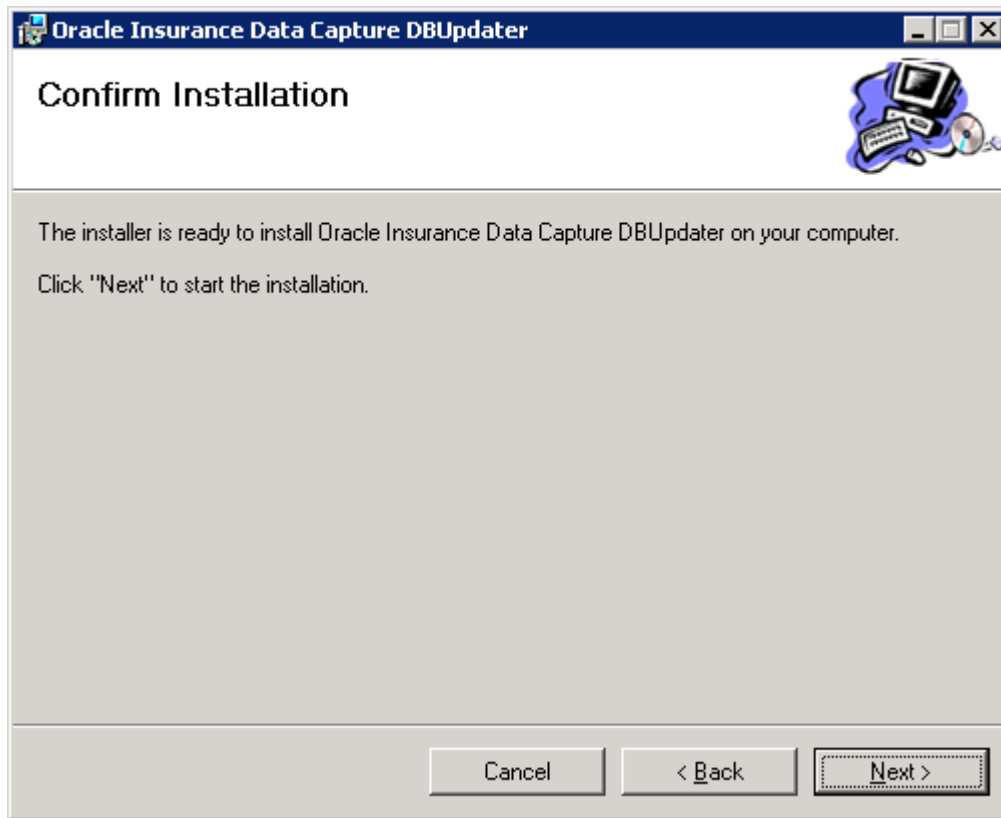


Figure 49 Selecting an Installation Folder

5. You have the option to select another installation directory. If you want another destination directory, browse for the directory you want to use. If the default installation directory is acceptable, Click **Next**. A Confirmation screen will be displayed next.



6. Click **Next** to continue. A progress screen will be displayed.

NOTE

If there are any problems with the database msi, the installer will stop, and an error message will be displayed. The update will not be saved or completed. You will have to correct the error and begin again.

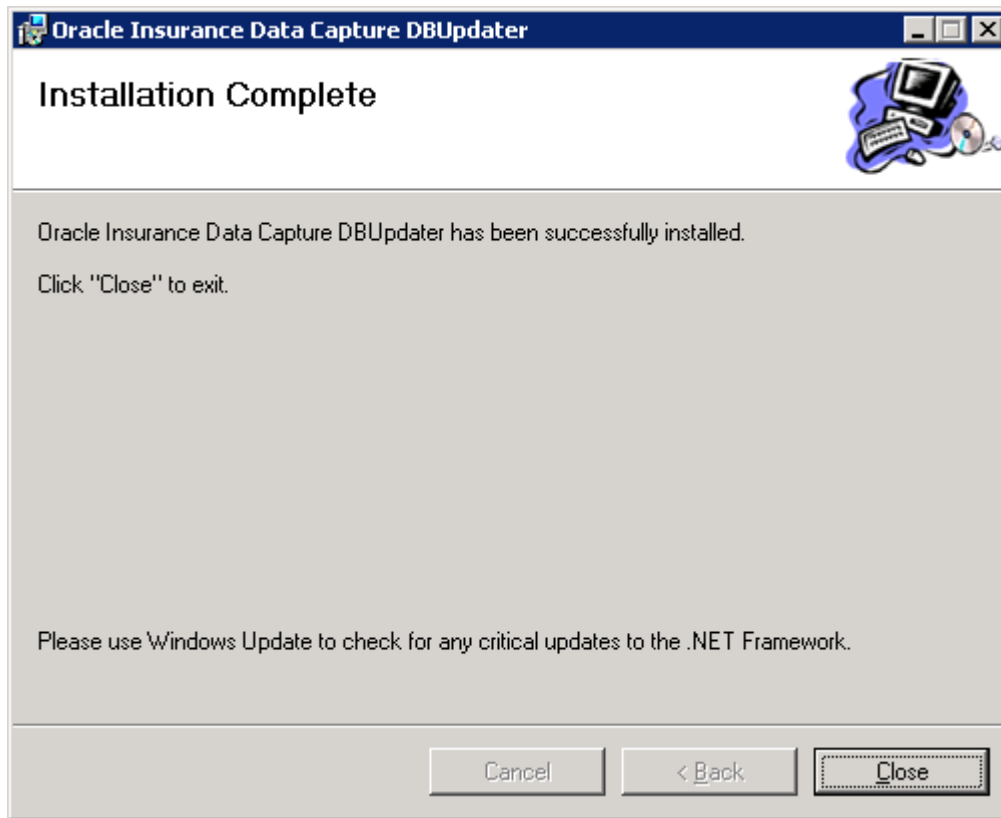


Figure 50 Completed Database Installation

7. When the update is complete, you will receive a success message. Click **Close** to close the installer. A folder should have been created under C:\Program Files\Oracle\IGBU\Datacapture\DBUpdater. This folder contains an executable that will need to be run.
8. Next, enter the C:\Program Files\Oracle\OIDC DBUpdater folder. Run the **DBUpdater.exe**.

The screenshot shows the 'OIDC Database Updater' application window. At the top, there is a 'DB Update Script Folder' section with a text box containing 'C:\Program Files\Oracle\OIDC DBUpdater\DBUpdate' and a 'Browse' button. Below this is a text instruction: 'Enter connection information for the OIDC databases. Leave the fields blank to skip updating the individual database.' The main area is divided into three sections: 'System Database', 'Client Database', and 'Log Database'. Each section contains fields for 'Server', 'Database Name', 'User', and 'Password', along with a checkbox for 'Use Windows Authentication'. The 'System Database' section has 'Server' in the text box, 'OIDC_SYSTEM' in the Database Name box, 'sa' in the User box, and '*****' in the Password box. The 'Client Database' section has 'Server' in the text box, 'OIDC_CLIENT' in the Database Name box, 'sa' in the User box, and '*****' in the Password box. The 'Log Database' section has 'Server' in the text box, 'OIDC_LOG' in the Database Name box, 'sa' in the User box, and '*****' in the Password box. At the bottom of the window are two buttons: 'Start Update' and 'Exit'.

OIDC Database Updater

DB Update Script Folder

C:\Program Files\Oracle\OIDC DBUpdater\DBUpdate

Enter connection information for the OIDC databases. Leave the fields blank to skip updating the individual database.

System Database

Server:

Database Name:

☐ Use Windows Authentication

User:

Password:

Client Database

Server:

Database Name:

☐ Use Windows Authentication

User:

Password:

Log Database

Server:

Database Name:

☐ Use Windows Authentication

User:

Password:

Figure 51 DBUpdater

9. Browse for the location of the DBUpdater file that you unzipped in step 3.
10. Enter in the database information for each database.
11. Click **Start Update**. When the updates are complete you will receive a message.
12. When the update is complete, **Exit** out.

Questionnaire and Designer Updates

Questionnaire and Designer will need to be updated next. For release 4.4.5 , it may be necessary to remove the previous instances of iQuestionnaire and iDesigner.

13. Remove the 4.3, 4.2.0 or 4.2.1 iQuestionnaire. Please see **Removing OIDC**.
14. Remove the 4.3, 4.2.0 or 4.2.1 iDesigner. Please see **Removing OIDC**.
15. Run the new 4.4.5 Engine setup.exe. Please see **OIDC Engine Installation**.
16. Run the new 4.4.5 Palette setup.exe. Please see **OIDC Palette Installation**.
17. The final step is to restore the backup web.config file you created in step 1.
18. Follow the local path to the location of Questionnaire. The local path will default to the initial installation path or a path selected by the installer. Two common paths are:

C:\Program Files\Oracle\IGBU\DataCapture\Questionnaire

C:\Program Files\InsBridge\Webs\OIDC\iQuestionnaire
19. Replace the existing web.config file with the one you created in step 1.
20. Enter the Engine (Questionnaire) application, click the Administration link. Verify that the information on the Administration page is the correct information. If not, please make any adjustments and click **Apply**.

The system is ready to use.

REMOVING O IDC

O IDC can be removed at any time. If you remove the Engine or Palette files, be aware that other users will not be able to access the application. The process is the same for both Engine and Palette.

Each file must be removed or repaired separately. If you only want to remove Engine, you can do that. Any file that you remove will have to be re-installed.

1. To remove or repair O IDC, click the **Setup.exe** of the program you want to remove or repair. A Repair or Remove screen will be displayed for the desired program. If there is not enough room on the hard drive, the installation will close down. In that case, you must go to the Add/Remove programs on Control Panel.

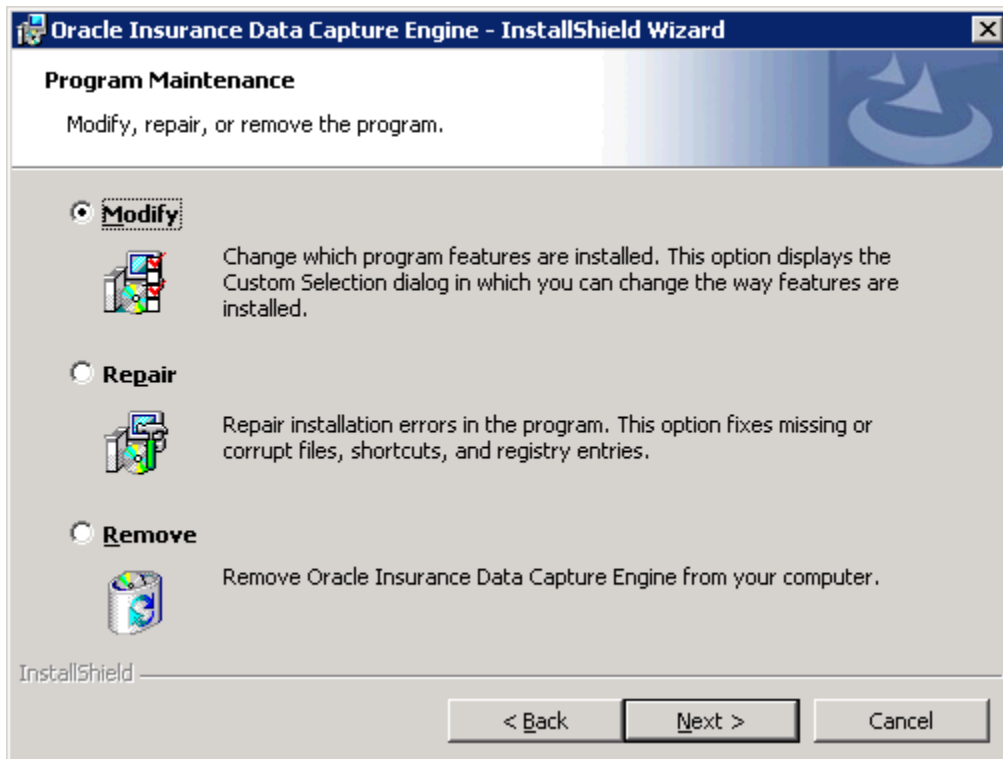
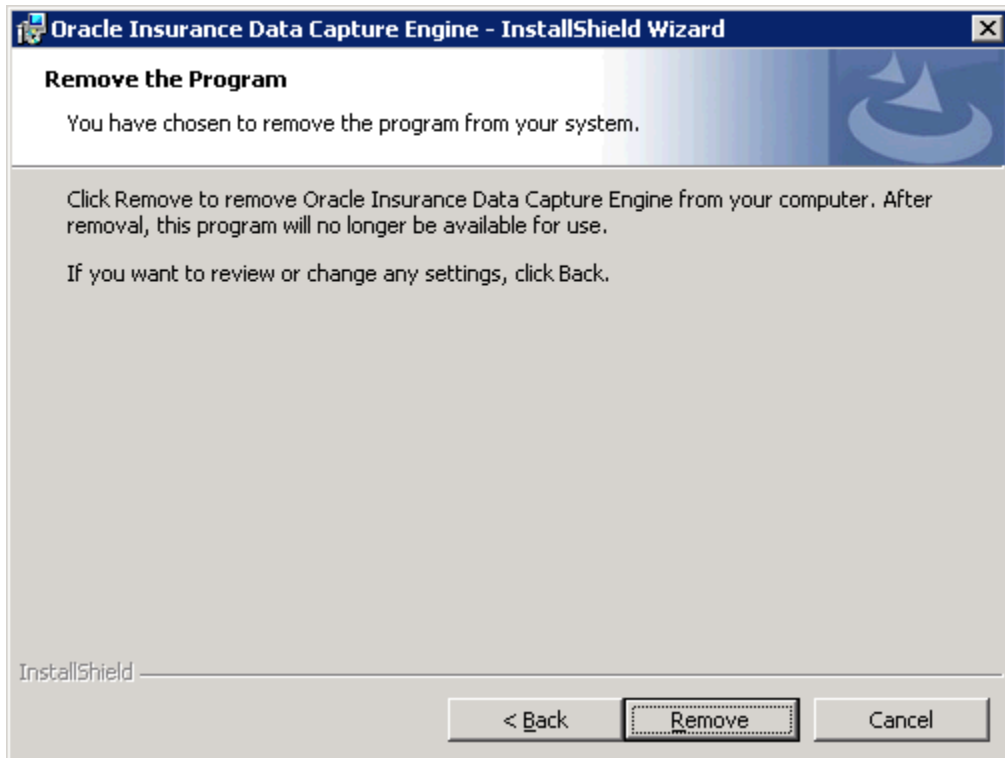


Figure 52 Removing/Repairing O IDC

2. Choose the option you need.
 - a. Modify will re-load the application.
 - b. **Repair** will re-load the application.
 - c. **Remove** will remove the application.
3. If you are removing the file, select **Remove**.
4. Click **Next**.



5. NO warning message will be displayed. The removal begins immediately. The status will be displayed as it progresses.

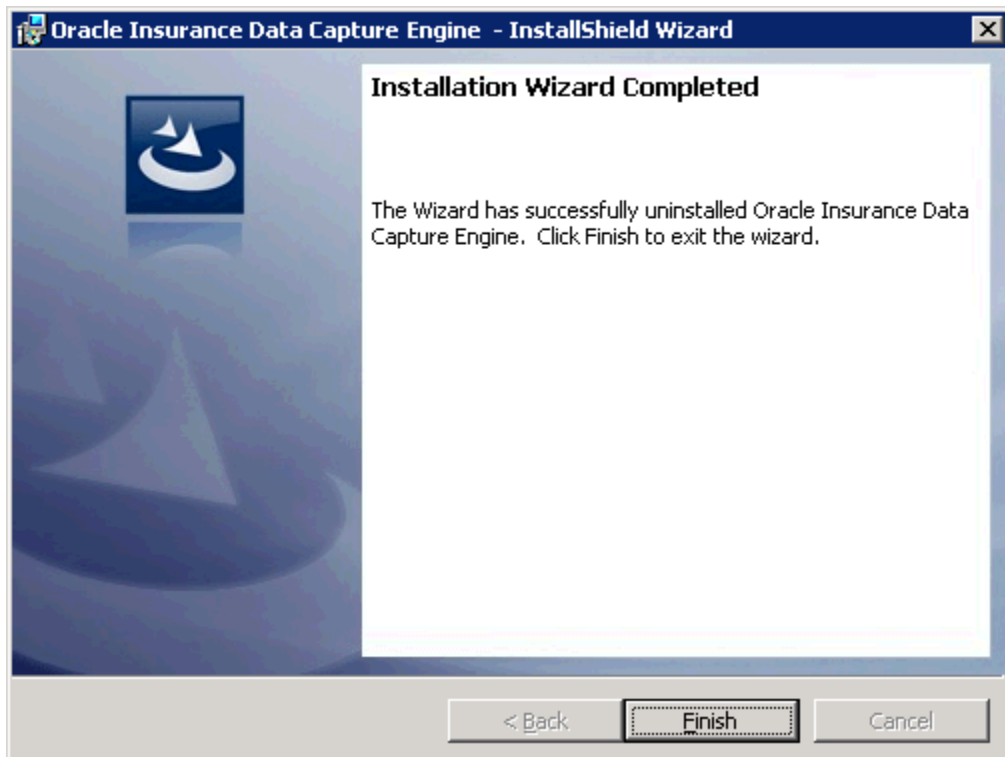


Figure 53 Remove Complete

6. When the program has been removed, a completion screen will be displayed. Click **Finish**.

The program will be removed. You may need to clear the temp files by running a Disk Cleanup program.

Removing OIDC Databases

Removing the OIDC database scripts from the directory created during the last installation. (i.e. C:\Program Files\OIDC\4.2.1\Database) will not remove the databases from SQL Server. Removing the previous database scripts will reduce the chance of an incorrect database script being run.

To Remove Database Scripts

To remove the database scripts, proceed to the location of the database scripts, for example, C:\Program Files\OIDC\4.2.1\Database and delete the files. The files will be removed to the Recycle Bin on your machine.

To Remove Databases from SQL Server

Please consult your MS SQL Sever guide for the recommended method of removing OIDC databases from your SQL Server.

SUPPORT

If you need assistance with an Oracle Insurance Data Capture, please log a Service Request using My Oracle Support at <https://support.oracle.com/>.

Address any additional inquiries to:

Oracle Corporation
World Headquarters
500 Oracle Parkway
Redwood Shores, CA 94065
U.S.A.

Worldwide Inquiries:
Phone: +1.650.506.7000
Fax: +1.650.506.7200
oracle.com

TTY ACCESS TO ORACLE SUPPORT SERVICES

Oracle provides dedicated Text Telephone (TTY) access to Oracle Support Services within the United States of America 24 hours a day, seven days a week. For TTY support, call 800.446.2398.

Index

A

- Active Server Pages
 - Enabling, 9
- Alias
 - Virtual Directory, 40
- Application Pool
 - ID, 36
 - Properties, 37
 - Updating, 35
- Application Server
 - Subcomponents, 8
- ASP.NET v4.0
 - Enabling, 9
- ASPNET Extensions
 - Microsoft .NET 4.0 Framework, 11

C

- Catalog
 - Connection String, 52
- Checklist
 - OIDC Installation, 7
- Collation and Sort Order
 - SQL Server, 21
- Compression
 - IIS Settings, 49
- Configuration
 - Server, 35
- Configuring
 - OIDC, 54
- Connection String
 - Catalog, 52
 - DataSource, 52
 - Editing in Web config file, 52
 - Password, 52
 - UserID, 52

D

- Database
 - Installation, 23
 - Location of DBUpdater, 60
 - Restore, 23
 - Server, MDAC, 10
 - Updates, 56
- DataSource
 - Connection String, 52
- DBUpdater Executable, 57
- Default
 - Password, 54

Directory

- Engine Location, 25, 30
- Palette Location, 25, 30
- DTC Access, 14

E

- E-Delivery
 - IBRU, 15
 - OIDC, vi
 - Required Programs, vi
- Editing
 - Connection String Web config file, 52
- Edition Notice, 2
- Engine
 - Installing, 25
 - Location, 25, 30
 - Setup.exe, 25
 - Successful Install, 29
- Extensions
 - ASPNET, 11

F

- Failure
 - Installation, 59

H

- <http://SERVERNAME/OIDCE/>, 54

I

- IBRU, 15
 - E-Delivery, 15
 - Installing .NET 4.0 Framework Prior, 11
- IBRU_INSTALL_DIR, 17
- ID
 - Application Pool, 36
- IIS
 - Enabling, 9
 - Installing Microsoft .NET 4.0 Framework After, 11
 - Required, 8
- IIS Settings
 - Compressions, 49
- Insbridge Framework Administrator
 - Installed, 22
 - Overview, 15
- Installation
 - Insbridge Framework Administrator, 22
 - Starting, 17
- Installation Checklist, 7

- Installation Failure, 59
- Installation Files, 22
- Installation Order, 22
- Installation Program
 - Requirements, 15
- Installer
 - Admin Rights for Installation, 15, 23, 56
- Installing
 - Engine, 25
 - Microsoft .NET 4.0 Framework, 11
 - Palette, 30

L

- Login
 - Default, 54

M

- Microsoft .NET 4.0 Framework, 11
- Microsoft Message Queuing Service, 10
- Microsoft SQL Server, 21
- MSDTC, 12
 - Security, 14
 - Tab, 13

O

- OIDC
 - Configuring, 54
 - E-Delivery, vi
 - Removing, 63
 - Repair, 63
- OIDC_DBUpdaterInstall.msi, 57
- OIDC_Engine.msi, 25
- OIDC_Log.bak, 23
- OIDC_System.bak, 23
- Overview
 - Insbridge Framework Administrator, 15

P

- Palette
 - Installing, 30
 - Location, 25, 30
 - Setup.exe, 30
- Part Numbers
 - E-Delivery, vi
- Password
 - Connection String, 52
- PDF Reader
 - E-Delivery, vi
- Permissions
 - Virtual Directory, 41
- Properties
 - Application Pool, 37

R

- Removing
 - OIDC, 63
- Repair
 - OIDC, 63
- Requirements
 - Engine, 25
 - Installation Program, 15, 23
 - Installing Palette, 30
 - Internet Information Services, 8
 - Microsoft Message Queuing Service, 10
 - Windows Server, 8
- Restore
 - OIDC Databases, 23

S

- Security Configuration, 14
- Server
 - Configuration, 35
- Server Authentication
 - SQL Server, 21
- SERVERNAME
 - Replacing, 54
- Servers
 - OIDC Split Over, 10
- Settings
 - MSDTC, 13
- SMTP Service
 - IIS Requirement, 8
- SQL Server
 - Authentication, 21
 - Collation and Sort Order, 21
 - Requirements, 21
 - Residing on Separate Host, 21
- SysAdmin
 - Default Login, 54

U

- Unzip Utility
 - E-Delivery, vi
- Updating
 - Application Pool, 35
 - Virtual Directory, 38
- UserID
 - Connection String, 52

V

- Virtual Directory
 - Permissions, 41
 - Updating, 38
- Virtual Directoy
 - Alias, 40

W

Web config file

Editing Connection String, 52

Web Server

MDAC, 10

Windows Server

Components, 8