

**Oracle® Enterprise Single Sign-on Suite Plus
Reporting**

Installation and Setup Guide

Release 11.1.1.1.0

E16530-01

December 2009

Copyright ©2006-2009, Oracle. All rights reserved.

The Programs (which include both the software and documentation) contain proprietary information; they are provided under a license agreement containing restrictions on use and disclosure and are also protected by copyright, patent, and other intellectual and industrial property laws. Reverse engineering, disassembly, or decompilation of the Programs, except to the extent required to obtain interoperability with other independently created software or as specified by law, is prohibited.

The information contained in this document is subject to change without notice. If you find any problems in the documentation, please report them to us in writing. This document is not warranted to be error-free. Except as may be expressly permitted in your license agreement for these Programs, no part of these Programs may be reproduced or transmitted in any form or by any means, electronic or mechanical, for any purpose.

If the Programs are delivered to the United States Government or anyone licensing or using the Programs on behalf of the United States Government, the following notice is applicable:

U.S. GOVERNMENT RIGHTS Programs, software, databases, and related documentation and technical data delivered to U.S. Government customers are "commercial computer software" or "commercial technical data" pursuant to the applicable Federal Acquisition Regulation and agency-specific supplemental regulations. As such, use, duplication, disclosure, modification, and adaptation of the Programs, including documentation and technical data, shall be subject to the licensing restrictions set forth in the applicable Oracle license agreement, and, to the extent applicable, the additional rights set forth in FAR 52.227-19, Commercial Computer Software--Restricted Rights (June 1987). Oracle USA, Inc., 500 Oracle Parkway, Redwood City, CA 94065.

The Programs are not intended for use in any nuclear, aviation, mass transit, medical, or other inherently dangerous applications. It shall be the licensee's responsibility to take all appropriate fail-safe, backup, redundancy and other measures to ensure the safe use of such applications if the Programs are used for such purposes, and we disclaim liability for any damages caused by such use of the Programs.

Oracle, JD Edwards, PeopleSoft, and Siebel are registered trademarks of Oracle Corporation and/or its affiliates. Other names may be trademarks of their respective owners.

The Programs may provide links to Web sites and access to content, products, and services from third parties. Oracle is not responsible for the availability of, or any content provided on, third-party Web sites. You bear all risks associated with the use of such content. If you choose to purchase any products or services from a third party, the relationship is directly between you and the third party. Oracle is not responsible for: (a) the quality of third-party products or services; or (b) fulfilling any of the terms of the agreement with the third party, including delivery of products or services and warranty obligations related to purchased products or services. Oracle is not responsible for any loss or damage of any sort that you may incur from dealing with any third party.

Table of Contents

Table of Contents	3
Abbreviations and Terminology	4
About Oracle Enterprise Single Sign-on Suite Plus Reporting	5
About this Guide	5
Installation Overview	6
Installing Web Server and WCF Support on Windows Server 2008	7
Installing the Reporting Administrative Console	10
Manually Configure Connection String Registry Setting	11
Create a User Account for Anonymous Logon	12
Next Steps	13
Accessing the Reporting Administrative Console	13

Abbreviations and Terminology

Following is a list of commonly-used abbreviations and terminology.

Abbreviation or Terminology	Full Name
Administrative Console	ESSO- LM Administrative Console
Agent	ESSO- LM Manager
FTU	First Time Use Wizard
ESSO-AM	Oracle Enterprise Single Sign-on Authentication Manager
ESSO-PG	Oracle Enterprise Single Sign-on Provisioning Gateway
ESSO-KM	Oracle Enterprise Single Sign-on Kiosk Manager
ESSO-LM	Oracle Enterprise Single Sign-on
ESSO-PR	Oracle Enterprise Single Sign-on Password Reset

About Oracle Enterprise Single Sign-on Suite Plus Reporting

Oracle Enterprise Single Sign-on Suite Plus Reporting version 11.1.1.1.0 provides organizations with the ability to create reports to leverage all data and events that routinely take place in the day-to-day usage of Oracle Enterprise Single Sign-on Suite Plus.

Reporting includes a Web-based administrative console that accesses the SQL database and generates reports using the event records.

The Reporting sub-system consists of 4 main components:

- **Centralized SQL Database** – contains all event information required for Reporting.
- **Web-based Reporting Administrative Console** – accesses the SQL database and generates reports using the event records.
- **SSO Reporting Service** – collects audit/reporting events into the SQL database.
- **Oracle Enterprise Single Sign-on Suite Plus Products** - captures event information and sends the events to the SSO Reporting Service.

About this Guide

This guide describes the steps to install and configure the Reporting Administrative Console. The instructions in this guide are based on an installation on Windows Server 2003 SP2.



Oracle Enterprise Single Sign-on Suite Plus Reporting version 11.1.1.1.0 is only supported on Windows Server 2003 SP2 and Windows Server 2008.

Installation Overview

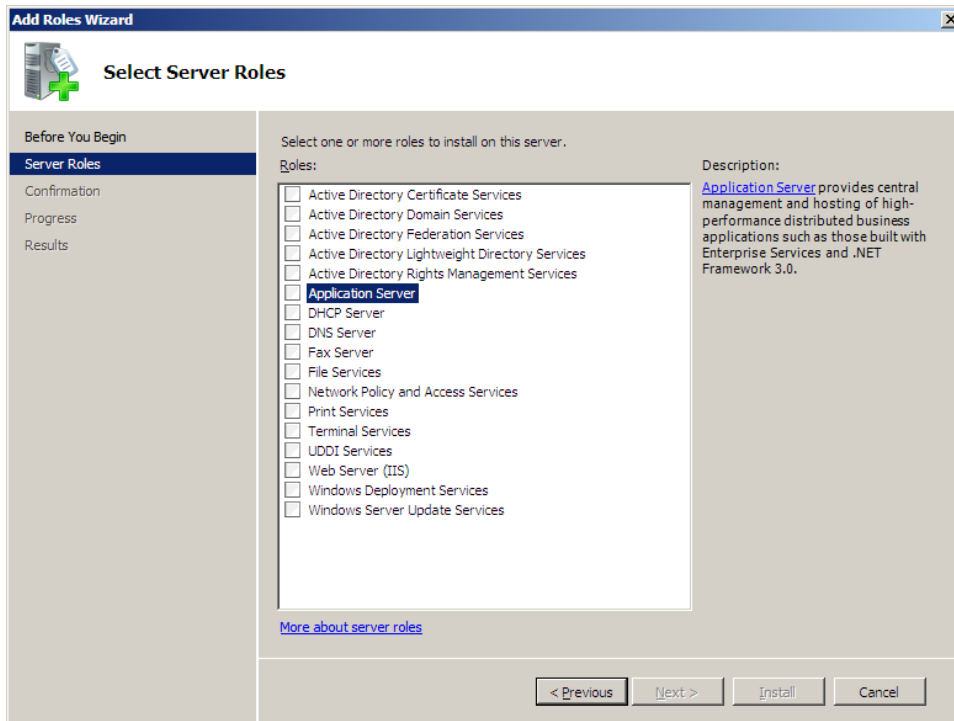
The following is a brief overview of the procedures that you must follow in order to successfully install and configure the Reporting Administrative Console:

- Review the Hardware and Software Requirements and pre-requisites in the *Oracle Enterprise Single Sign-on Suite Plus Reporting Release Notes*. Pre-requisites include:
 - .NET Framework 3.5
 - Microsoft IIS with WCF support (see the [Installing Web Server and WCF Support on Windows Server 2008](#) section for more information)
- Configure the SQL Database. Refer to the *Oracle Enterprise Single Sign-on Suite Plus Reporting Database Configuration Guide* for information on this.
- Set up Oracle Enterprise Single Sign-on Suite Plus products to log events to the database. Refer to the *Configuring <Product Name> to Log Events for Reporting* for more information.
- Install the Oracle Enterprise Single Sign-on Suite Plus Reporting Administrative Console.
- Manually configure the Connection String registry setting.
- Create a User Account for Anonymous Logon.
- Log onto the Reporting Administrative Console and begin generating reports.

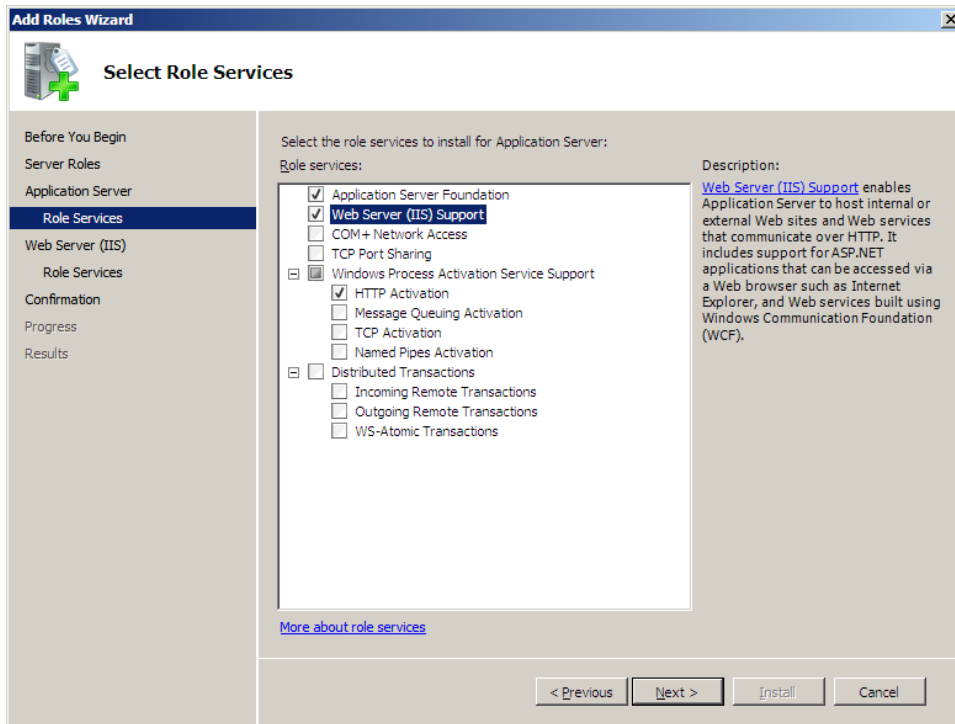
Installing Web Server and WCF Support on Windows Server 2008

The following instructions are provided to get Web Server and WCF support installed on Windows Server 2008.

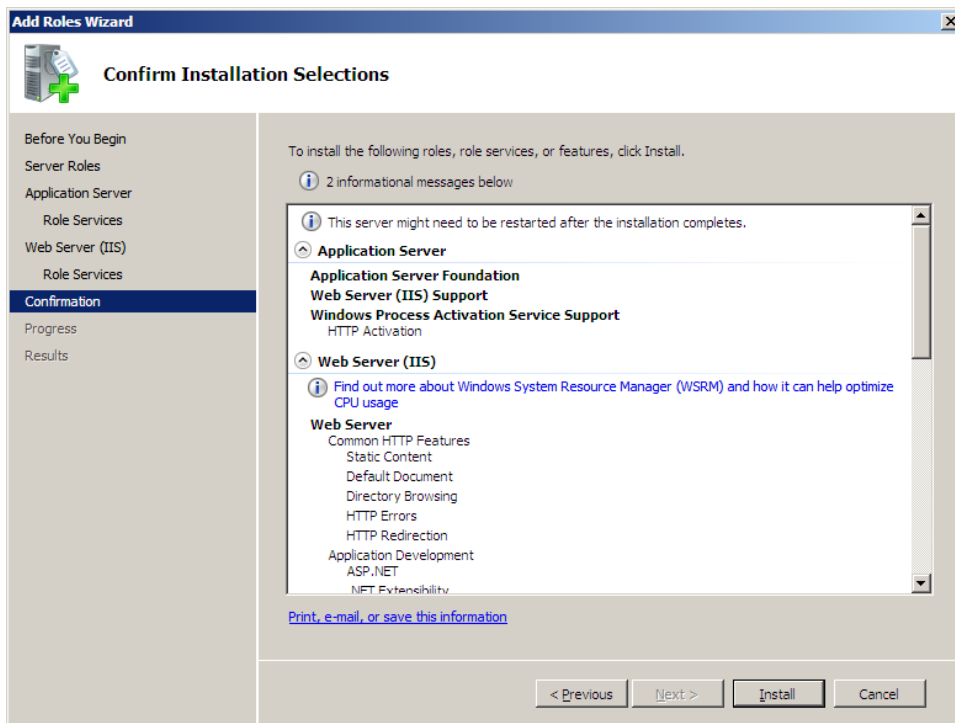
1. Launch the Windows Server 2008 Server Manager.
2. In the left-hand pane, click on **Roles**.
3. In the right-hand pane, click on **Add Roles**. This will take you to the Before you Begin screen. Click **Next**.
4. You are now on the Select Server Roles screen. Click the **Application Server** role checkbox.



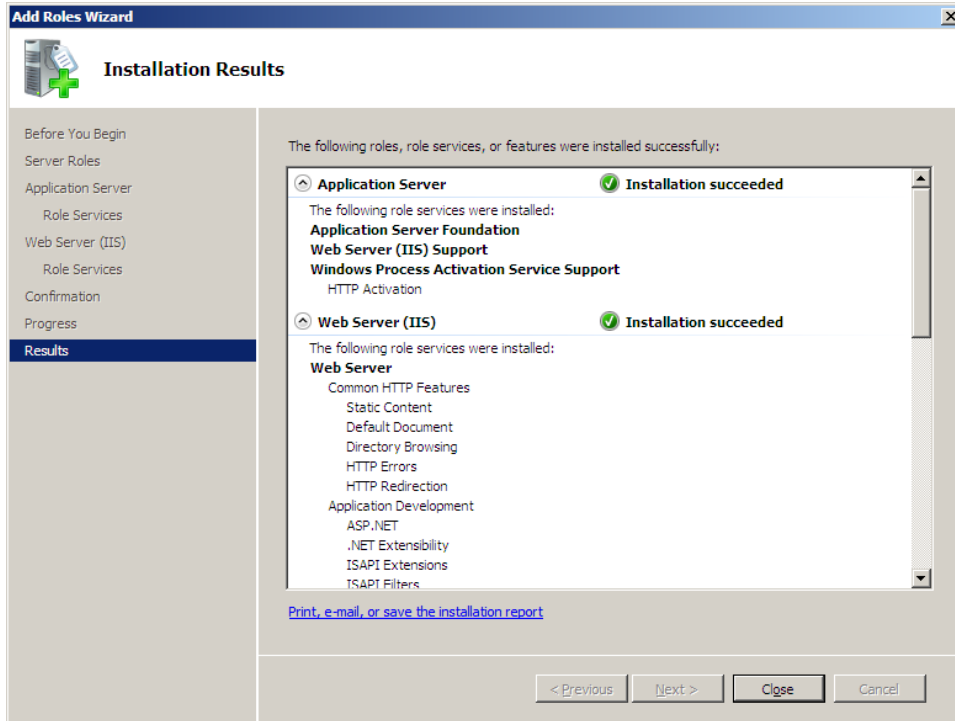
5. The Add Roles Wizard dialog appears. Click the **Add Required Features** button to continue.
6. Click **Next** on the next two screens until you get to the Select Role Services screen for the Application Server role.
7. Click the **Web Server (IIS) Support** role service checkbox.
8. An Add Roles Wizard dialog appears. Click the **Add Required Role Services** button to continue.
9. The Select Role Services screen reappears. Make sure the **HTTP Activation** role service is selected.



10. Click **Next** on the next three screens (accepting all defaults) until you get to the Confirm Installation Selections screen.



11. Click **Install** to begin the installation of the Application Server and Web Server roles.
12. Once installation is complete the Installation Results screen appears.
13. Click the **Close** button to exit out of the Add Roles Wizard.



Installing the Reporting Administrative Console

Before you begin the installation and configuration process, carefully review the system requirements and verify that your system meets those requirements.

To install and configure the Oracle Enterprise Single Sign-on Suite Plus Reporting Administrative Console:

1. Close all programs.
2. Insert the installation CD in your CD-ROM drive (or start the installation from a shared network drive).
3. On the main menu screen, click **Install Reporting Console** to begin the installation. Click **Next**.



4. The License Agreement panel opens. Read the license agreement carefully. Click the **I accept the terms in the license agreement** button and click **Next**.
5. On the Setup Type screen, select **Complete** or **Custom**. Complete installs all program files. Custom allows you to choose which program files are installed and where they are installed. Custom installations are only recommended for advanced users. Click **Next**.
6. The Reporting Administrative Console is ready to be installed. Click **Install**. Wait for the installation to complete. When it is done, click **Finish**.

Manually Configure Connection String Registry Setting

In order for the Reporting Administrative Console to function properly, after the initial install you will need to manually add the Server Name and Database Name parameters to the Connection String setting in the Registry.

1. Open the Registry. **Start** > **Run** > type in "regedit".
2. Navigate to HKEY_LOCAL_MACHINE\Software\Passlogix\Reporting.
3. Double click **ConnectionString**.
4. Change the **Value Data** string to reflect the correct Server Name (Data Source) and Database Name (Initial Catalog):

Reporting Administrative Console Connection String Examples:

Your own database instance:

```
Data Source=<Server name>\<DB Instance>;Initial Catalog=<Database name>;Connect Timeout=1200;Pooling=False;MultipleActiveResultSets=True;
```

Default database instance:

```
Data Source=<Server name>;Initial Catalog=<Database name>;Connect Timeout=1200;Pooling=False;MultipleActiveResultSets=True;
```

ESSO-LM Client Connection String Examples:

If you use your own database instance, use this for the ESSO-LM client:

```
Provider=SQLOLEDB.1;Integrated Security=SSPI;Persist Security Info=False;Initial Catalog=<Database name>;Data Source=<Server name\DB Instance>
```

If you use a default database instance, use this for the ESSO-LM Client:

```
Provider=SQLOLEDB.1;Integrated Security=SSPI;Persist Security Info=False;Initial Catalog=<Database name>;Data Source=<Server name>
```

Create a User Account for Anonymous Logon

You must create or identify a dedicated Anonymous User account through which Reporting users and administrators access Reporting Web Services. This Anonymous User account should be a member of the Administrators group.

Because the default Anonymous User account in IIS, IUSR_MACHINE_NAME, is not a member of the Administrator group, you must create or choose a domain user account that is an Administrator; this will allow the account to perform the following tasks:

- Write to the local-machine registry HKLM. To create a new user account or assign Administrator rights to an existing account, use the Active Directory Users and Computers console (for an Active Directory domain) or the Computer Management console (for non-AD domains)
- Delete generated reports from the reporting console

The user account you create or choose is specified as the Anonymous User dialog of the Services tool during this step.

To do this with Windows Server 2003:

1. Launch the IIS Manager.
2. Locate the Reporting node in the tree, right-click on it, and click **Properties**.
3. Click the **Directory Security** tab and click the **Edit** button next to **Anonymous Access**.
4. Check the **Anonymous Access** checkbox and enter the username and password of the anonymous user. The anonymous user must have local administrative access.

To do this with Windows Server 2008:

1. Launch the IIS Manager.
2. Expand the computer node.
3. Expand the **Sites** node and then expand the **Default Web Site** node.
4. Click on the **Reporting** web application.
5. On the right side, under the IIS section, double-click the **Authentication** icon.
6. Right-click the **Anonymous Authentication** item and select **Edit**.
7. On the Edit Anonymous Authentication Credentials dialog make sure the **Specific User** radio button is selected and click the **Set** button.
8. In the Set Credentials dialog, type in a username and password for a user account with Administrative privileges on the local machine. Confirm the password and click **OK**.

Next Steps

Once the Reporting Administrative Console is installed and reporting event logging is set up, you can log on and begin generating reports.

Accessing the Reporting Administrative Console

1. Launch a Web browser.
2. Enter the following URL: `http://<server>/Reporting/Reporting.aspx`.
3. Log on.



If it is not already installed, you may be prompted to install Microsoft Silverlight when you first access the Reporting Administrative Console. You must have Microsoft Silverlight installed to use the console.

Generate Reports

For more information, see the Reporting Administrative Console online help, or refer to the Oracle Enterprise Single Sign-on Suite Plus Reporting online Help.