

**Oracle® Enterprise Single Sign-on Suite Plus
Reporting**

Configuring Enterprise Single Sign-on to Log Events for Reporting

Release 11.1.1.1.0

E16535-01

December 2009

Oracle Enterprise Single Sign-on Suite Plus Reporting, Configuring Enterprise Single Sign-on to Log Events for Reporting, Release 11.1.1.1.0

E16535-01

Copyright ©2006-2009, Oracle. All rights reserved.

The Programs (which include both the software and documentation) contain proprietary information; they are provided under a license agreement containing restrictions on use and disclosure and are also protected by copyright, patent, and other intellectual and industrial property laws. Reverse engineering, disassembly, or decompilation of the Programs, except to the extent required to obtain interoperability with other independently created software or as specified by law, is prohibited.

The information contained in this document is subject to change without notice. If you find any problems in the documentation, please report them to us in writing. This document is not warranted to be error-free. Except as may be expressly permitted in your license agreement for these Programs, no part of these Programs may be reproduced or transmitted in any form or by any means, electronic or mechanical, for any purpose.

If the Programs are delivered to the United States Government or anyone licensing or using the Programs on behalf of the United States Government, the following notice is applicable:

U.S. GOVERNMENT RIGHTS Programs, software, databases, and related documentation and technical data delivered to U.S. Government customers are "commercial computer software" or "commercial technical data" pursuant to the applicable Federal Acquisition Regulation and agency-specific supplemental regulations. As such, use, duplication, disclosure, modification, and adaptation of the Programs, including documentation and technical data, shall be subject to the licensing restrictions set forth in the applicable Oracle license agreement, and, to the extent applicable, the additional rights set forth in FAR 52.227-19, Commercial Computer Software--Restricted Rights (June 1987). Oracle USA, Inc., 500 Oracle Parkway, Redwood City, CA 94065.

The Programs are not intended for use in any nuclear, aviation, mass transit, medical, or other inherently dangerous applications. It shall be the licensee's responsibility to take all appropriate fail-safe, backup, redundancy and other measures to ensure the safe use of such applications if the Programs are used for such purposes, and we disclaim liability for any damages caused by such use of the Programs.

Oracle, JD Edwards, PeopleSoft, and Siebel are registered trademarks of Oracle Corporation and/or its affiliates. Other names may be trademarks of their respective owners.

The Programs may provide links to Web sites and access to content, products, and services from third parties. Oracle is not responsible for the availability of, or any content provided on, third-party Web sites. You bear all risks associated with the use of such content. If you choose to purchase any products or services from a third party, the relationship is directly between you and the third party. Oracle is not responsible for: (a) the quality of third-party products or services; or (b) fulfilling any of the terms of the agreement with the third party, including delivery of products or services and warranty obligations related to purchased products or services. Oracle is not responsible for any loss or damage of any sort that you may incur from dealing with any third party.

Table of Contents

Table of Contents	3
Abbreviations and Terminology	4
About Oracle Enterprise Single Sign-on Suite Plus Reporting	5
About this Guide	5
ESSO-LM Configuration Overview	6
Install ESSO-LM Agent and Administrative Console	7
Configure Reporting Settings	8
Next Steps	9

Abbreviations and Terminology

Following is a list of commonly-used abbreviations and terminology.

Abbreviation or Terminology	Full Name
Administrative Console	ESSO-LM Administrative Console
Agent	ESSO-LM Manager
FTU	First Time Use Wizard
ESSO-AM	Oracle Enterprise Single Sign-on Authentication Manager
ESSO-PG	Oracle Enterprise Single Sign-on Provisioning Gateway
ESSO-KM	Oracle Enterprise Single Sign-on Kiosk Manager
ESSO-LM	Oracle Enterprise Single Sign-on
ESSO-PR	Oracle Enterprise Single Sign-on Password Reset

About Oracle Enterprise Single Sign-on Suite Plus Reporting

Oracle Enterprise Single Sign-on Suite Plus Reporting version 7.0 provides organizations with the ability to create reports to leverage all data and events that routinely take place in the day-to-day usage of Oracle Enterprise Single Sign-on Suite Plus.

Reporting includes a Web-based administrative console that accesses the SQL database and generates reports using the event records.

The Reporting sub-system consists of 4 main components:

- **Centralized SQL Database** – contains all event information required for Reporting.
- **Web-based Reporting Administrative Console** – accesses the SQL database and generates reports using the event records.
- **SSO Reporting Service** – collects audit/reporting events into the SQL database.
- **Oracle Enterprise Single Sign-on Suite Plus Products** - captures event information and sends the events to the SSO Reporting Service.

About this Guide

This guide describes how to configure ESSO-LM to capture event information and send the events to the Reporting Database.

The instructions in this guide are based on ESSO-LM v11.1.1.1.0.

The database should be configured prior to executing the steps in this guide. Refer to the *Oracle Enterprise Single Sign-on Suite Plus Reporting Database Configuration Guide*.



Oracle Enterprise Single Sign-on Suite Plus Reporting version 7.0 is only supported with ESSO-LM version 11.1.1.1.0.

ESSO-LM Configuration Overview

The following is a brief overview of the procedures that you must follow in order to successfully configure ESSO-LM to log events and send them to the Reporting database:

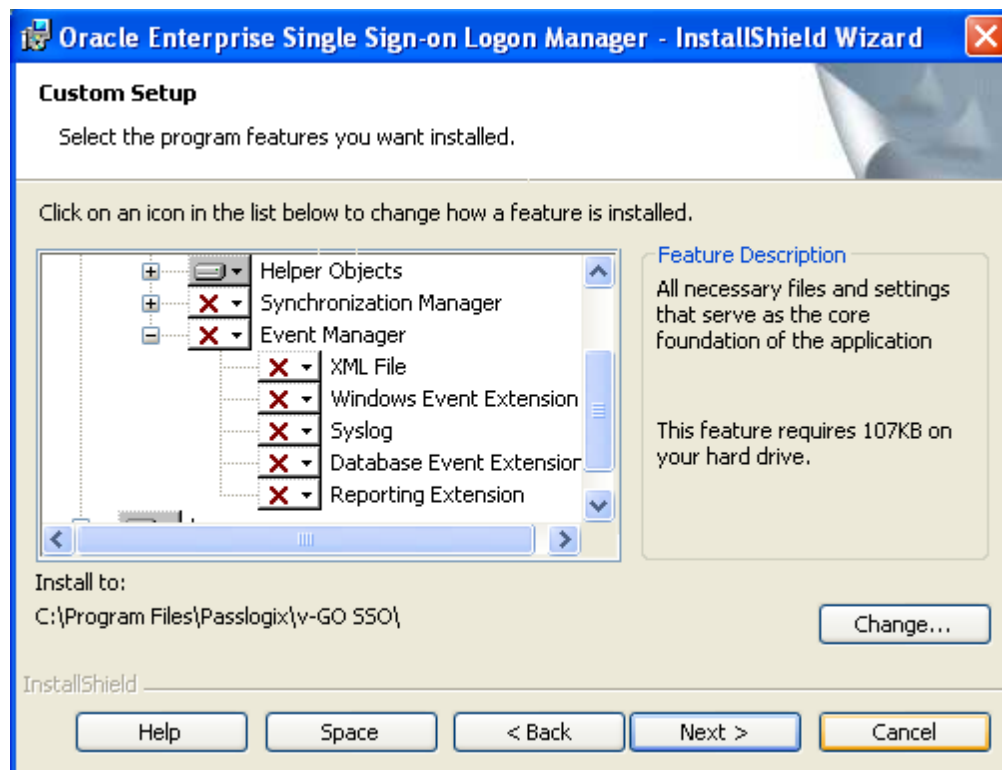
- [Install ESSO-LM Agent and Administrative Console](#)
- [Configure Reporting settings in ESSO-LM Administrative Console](#)
- [Next Steps](#)

Install ESSO-LM Agent and Administrative Console

If it is not already installed, download and install the ESSO-LM version 11.1.1.1.0 Agent and Administrative Console.

When installing the ESSO-LM Agent, you must install the Reporting Extension:

1. On the Setup Type panel, select a **Custom Setup**.
2. On the Custom Setup panel, expand **Event Manager**.
3. Select **Reporting Extension** and set it to install.
4. Complete installation.



Refer to the *ESSO-LM Installation and Setup Guide* for specific instructions.

Configure Reporting Settings

To configure ESSO-LM to begin capturing events, you must adjust some settings in the ESSO-LM Administrative Console.

1. Open the ESSO-LM Administrative Console by pointing to **Start > Programs > Oracle > ESSO-LM > ESSO-LM Console**.
2. Select a set of Global Agent Settings (or right-click **Global Agent Settings**, point to **Import**, click **From Live HKLM**, expand **Live**).
3. Click on **Reporting**. Set the **Retry Interval** setting. This setting defines the number of minutes between sequential operations of the Reporting Service Cache offloading events to the database. An interval is necessary to reduce database connection load. The default is 30, and regardless of what interval is set, the initial offloading of events to the database will happen 30 minutes after ESSO-LM is started for the first time after the Reporting Extension is installed and configured.
4. Expand **Reporting** and select **Database**. Configure the three settings on this panel:

Connection String	<input type="checkbox"/>	<input type="text"/>
Extension Location	<input type="checkbox"/>	<input type="text"/> ...
Stored Procedure	<input type="checkbox"/>	<input type="text" value="dbo.sp_WriteEvents"/>

- **Connection String:** Enter the database connection string in OLE DB format. The machine must be within the domain. For example:
`Provider=SQLOLEDB.1;Integrated Security=SSPI;Persist Security Info=False;Initial Catalog=<Database Name>; Data Source=<database server>.`
 - **Extension Location:** Path\filename of the Reporting Database Extension that points to the `ReportingDBExt.dll`. You must set this path to the installation location, for example:
`"C:\Program Files\Oracle\ESSO-LM Reporting Service\ReportingDBExt.dll"`.
 - **Stored Procedure:** The name of the stored procedure in the database. When encoded events are sent to the database, the stored procedure is called to decode the XML file and store the events in the database. Set this to `"dbo.sp_WriteEvents"`.
5. Under Global Agent Settings, expand **Event Logging** and select **Reporting**.
 - **Extension Location:** Path\filename of the Reporting Extension that points to the `ReportingExt.dll`. You must set this path to the installation location, for example:
`"C:\Program Files\Passlogix\v-GO SSO\Plugin\EventMgr\ReportingExt.dll"`.
 6. Export the settings to the ESSO-LM Agent. Refer to the ESSO-LM documentation for information on exporting Global Agent Settings.

Next Steps

Once ESSO-LM is configured to capture events and store them in the database, you can then install the Oracle Enterprise Single Sign-on Suite Plus Reporting Administrative Console and begin generating reports.