

**Oracle® Enterprise Single Sign-on  
Anywhere**

Installation and Setup Guide

Release 11.1.1.1.0

**E15580-01**

August 2009

Copyright ©2009, Oracle. All rights reserved.

The Programs (which include both the software and documentation) contain proprietary information; they are provided under a license agreement containing restrictions on use and disclosure and are also protected by copyright, patent, and other intellectual and industrial property laws. Reverse engineering, disassembly, or decompilation of the Programs, except to the extent required to obtain interoperability with other independently created software or as specified by law, is prohibited.

The information contained in this document is subject to change without notice. If you find any problems in the documentation, please report them to us in writing. This document is not warranted to be error-free. Except as may be expressly permitted in your license agreement for these Programs, no part of these Programs may be reproduced or transmitted in any form or by any means, electronic or mechanical, for any purpose.

If the Programs are delivered to the United States Government or anyone licensing or using the Programs on behalf of the United States Government, the following notice is applicable:

U.S. GOVERNMENT RIGHTS Programs, software, databases, and related documentation and technical data delivered to U.S. Government customers are "commercial computer software" or "commercial technical data" pursuant to the applicable Federal Acquisition Regulation and agency-specific supplemental regulations. As such, use, duplication, disclosure, modification, and adaptation of the Programs, including documentation and technical data, shall be subject to the licensing restrictions set forth in the applicable Oracle license agreement, and, to the extent applicable, the additional rights set forth in FAR 52.227-19, Commercial Computer Software--Restricted Rights (June 1987). Oracle USA, Inc., 500 Oracle Parkway, Redwood City, CA 94065.

The Programs are not intended for use in any nuclear, aviation, mass transit, medical, or other inherently dangerous applications. It shall be the licensee's responsibility to take all appropriate fail-safe, backup, redundancy and other measures to ensure the safe use of such applications if the Programs are used for such purposes, and we disclaim liability for any damages caused by such use of the Programs.

Oracle, JD Edwards, PeopleSoft, and Siebel are registered trademarks of Oracle Corporation and/or its affiliates. Other names may be trademarks of their respective owners.

The Programs may provide links to Web sites and access to content, products, and services from third parties. Oracle is not responsible for the availability of, or any content provided on, third-party Web sites. You bear all risks associated with the use of such content. If you choose to purchase any products or services from a third party, the relationship is directly between you and the third party. Oracle is not responsible for: (a) the quality of third-party products or services; or (b) fulfilling any of the terms of the agreement with the third party, including delivery of products or services and warranty obligations related to purchased products or services. Oracle is not responsible for any loss or damage of any sort that you may incur from dealing with any third party.

## Table of Contents

Abbreviations and Terminology .....	2
About Oracle Enterprise Single Sign-on Anywhere.....	3
Before Installing the ESSO-Anywhere Console.....	4
Creating the Deployment Package .....	5
Installing the ESSO-Anywhere Console.....	6

## Abbreviations and Terminology

Following is a list of commonly-used abbreviations and terminology.

Abbreviation or Terminology	Full Name
Administrative Console	ESSO-LM Administrative Console
Agent	Logon Manager
FTU	First Time Use Wizard
ESSO-AM	Oracle Enterprise Single Sign-on Authentication Manager
ESSO-Anywhere	Oracle Enterprise Single Sign-on Anywhere
ESSO-PG	Oracle Enterprise Single Sign-on Provisioning Gateway
ESSO-KM	Oracle Enterprise Single Sign-on Kiosk Manager
ESSO-LM	Oracle Enterprise Single Sign-on Logon Manager
ESSO-PR	Oracle Enterprise Single Sign-on Password Reset

## About Oracle Enterprise Single Sign-on Anywhere

Oracle Enterprise Single Sign-on Anywhere (ESSO-Anywhere) is the latest innovation in portable single sign-on (SSO) technology, enabling deployment of Oracle Enterprise Single Sign-on Logon Manager (ESSO-LM) and other Agents to end users' desktops.

Using the ESSO-Anywhere Console, the administrator creates a deployment package configured with the Oracle products needed by users of an enterprise, making the package available over a Web server or file share. Users download this deployment package from an HTML interface that is included with the ESSO-Anywhere package, and which the administrator customizes. Users can then perform installations of the Oracle product suite on their own workstations at the click of a button, with assurance that configurations are correct and ready to run, and without administrator intervention.

**Note:** ESSO-Anywhere is designed for compatibility with Windows Authenticator v1. It is not designed to work with ESSO-LM features that require installing system services or GINAs, adding registry entries outside of Live HKLM\Software\Passlogix, or additions to Program Files or Windows system folders.

The deployment package must include ESSO-LM and might include any of the following Agents:

- Oracle Enterprise Single Sign-on Authentication Manager (ESSO-AM)
- Oracle Enterprise Single Sign-on Provisioning Gateway (ESSO-PG).

Visual C++ Runtime and .NET 2.0 are prerequisites for running ESSO-Anywhere. The installation package includes Visual C++ Runtime, however you must make .NET 2.0 available to users. See the [ESSO-Anywhere Release Notes](#) for a complete list of software and hardware requirements.

**Note:** The final output of the deployment package is not an .MSI file. You must ensure that you supply any additional requirements that your end users will need to run their ESSO-LM and additional Agent software.

## Before Installing the ESSO-Anywhere Console

ESSO-Anywhere reads the configuration of the other Passlogix products from which you will create the ESSO-Anywhere deployment package. Prior to installing ESSO-Anywhere, install the products that you intend to deploy. Follow the installation and setup instructions for these products from their respective [installation and setup guides](#). The deployment package must include ESSO-LM and might include either or both of the following Agents:

- Oracle Enterprise Single Sign-on Authentication Manager (ESSO-AM)
- Oracle Enterprise Single Sign-on Provisioning Gateway (ESSO-PG).

Install these products on a clean workstation. If you are deploying ESSO-PG, install its Administrative Console on a different workstation.

**Note:** The Visual C++ Runtime Library and .NET 2.0 Framework are prerequisites for running ESSO-Anywhere. The installation package includes the Visual C++ Runtime Library, however you must make the .NET 2.0 Framework available to users. See the [ESSO-Anywhere Release Notes](#) for a complete list of software and hardware requirements.

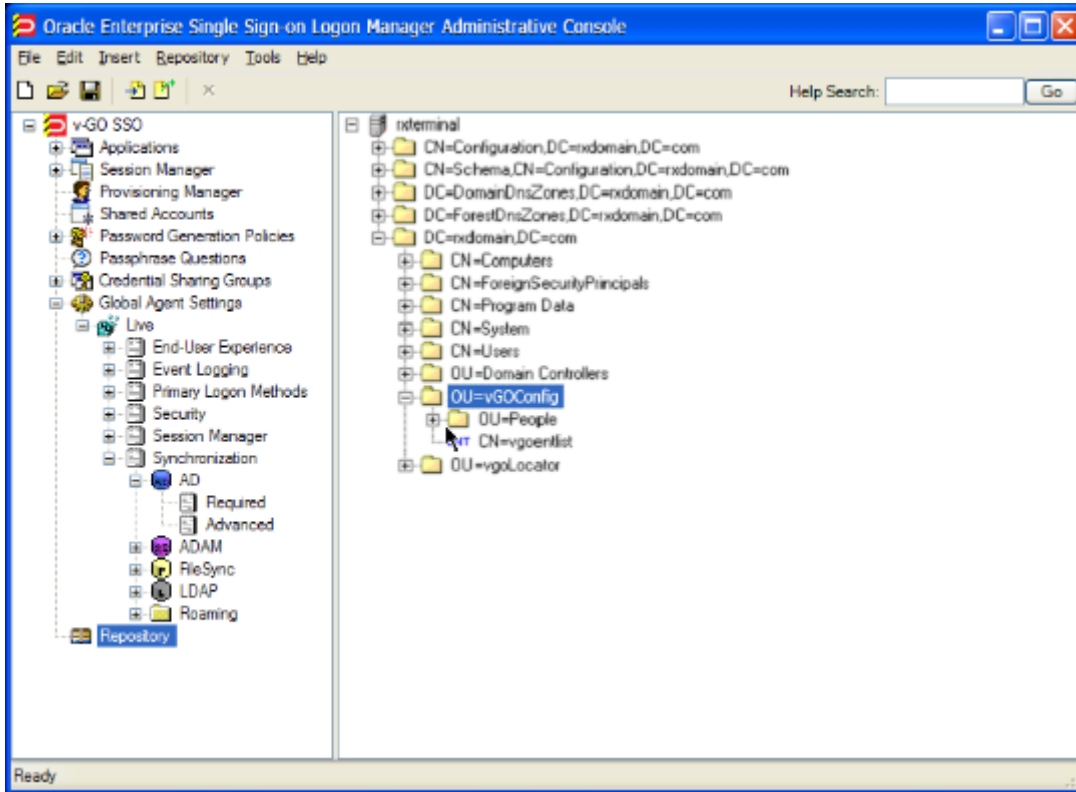
Configure the Agents as you want the end users to work with them. End users do not have the option to alter the installation. If you want different users to install different packages, create a separate deployment package for each installation.

## Creating the Deployment Package

To create the configuration that ESSO-Anywhere will read:

- Carefully review the information in [Before Installing ESSO-Anywhere](#).
- Install the ESSO-LM Administrative Console. For more information on configuring the Administrative Console, see the [ESSO-LM Administrative Console help](#).
- Install the ESSO-LM Agent.
- Install the additional Oracle components as required. For more information, see the individual Agent [installation and setup guides](#).
- Configure the ESSO-LM Agent and any additional Agents, if applicable, as you want. See the [ESSO-LM Administrative Console help](#) and the individual Agent [installation and setup guides](#) for more information.
- When you have completed your configuration, select **Global Agent Settings > Live > Write to Live HKLM**.
- When you create the ESSO-Anywhere deployment, you will have the option to use the Live HKLM settings, or an exported registry file. If you plan to use a registry file, select the set of Global Agent Settings you have configured, right-click, and **Export** to a .REG file. The following graphic depicts a sample configuration.

**Note:** Oracle recommends that you test the registry before you export it.

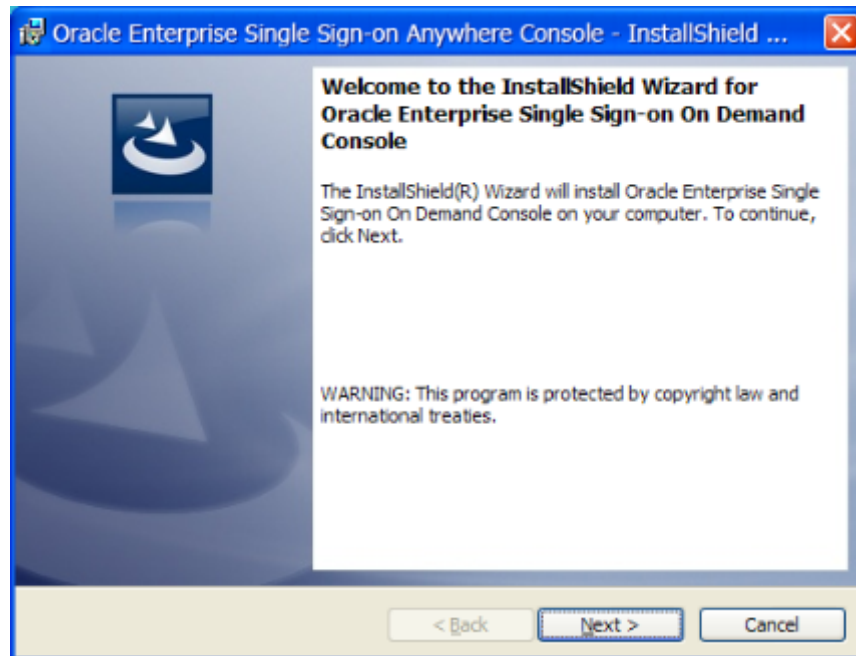


## Installing the ESSO-Anywhere Console

Read the sections [Before Installing the ESSO-Anywhere Console](#) and [Creating the Deployment Package](#) before proceeding with the ESSO-Anywhere Console installation.

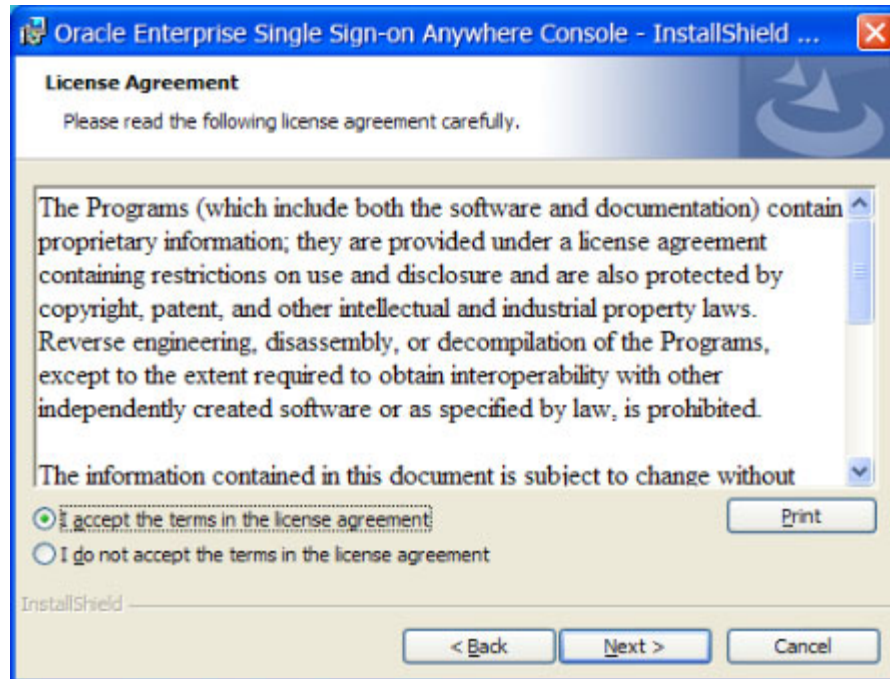
To install the ESSO-Anywhere Console:

1. Place the Oracle Enterprise Single Sign-on Anywhere installation CD in your CD-ROM drive (or start the installation from a shared network drive).
2. Launch **ESSO-Anywhere Console 11.1.1.1.0\_0X.msi** or **ESSO-Anywhere Console 11.1.1.1.0\_0X.exe**.

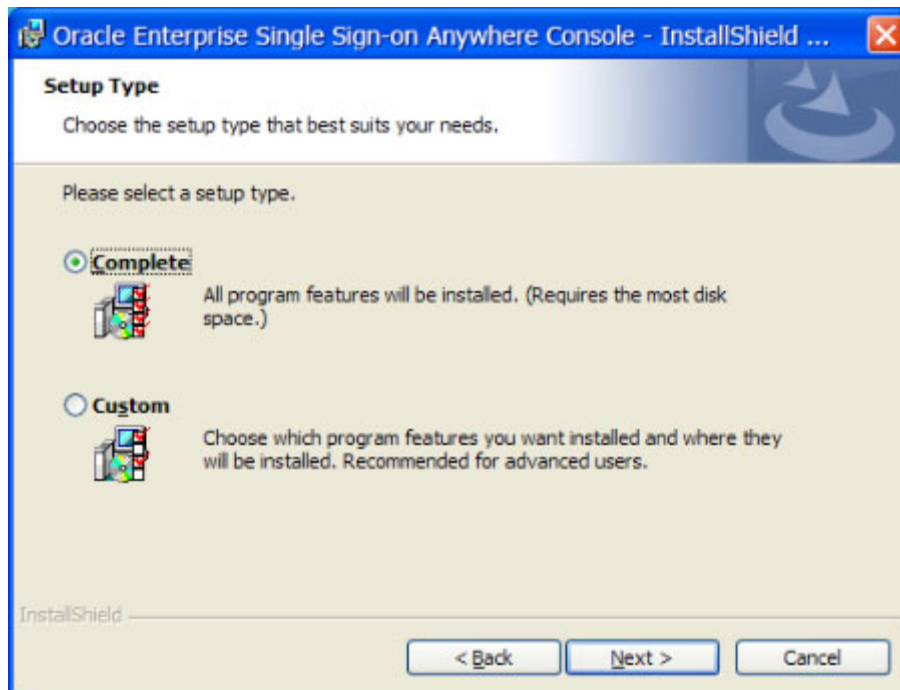




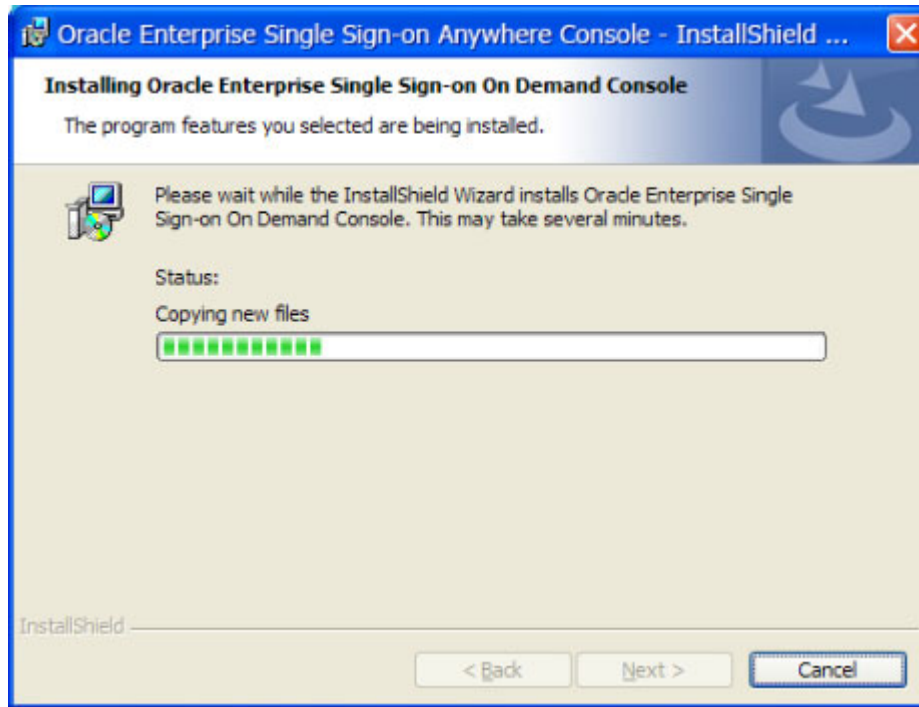
3. Read the End User License Agreement carefully. Select **I accept the terms in the license agreement** and click **Next >** to continue.



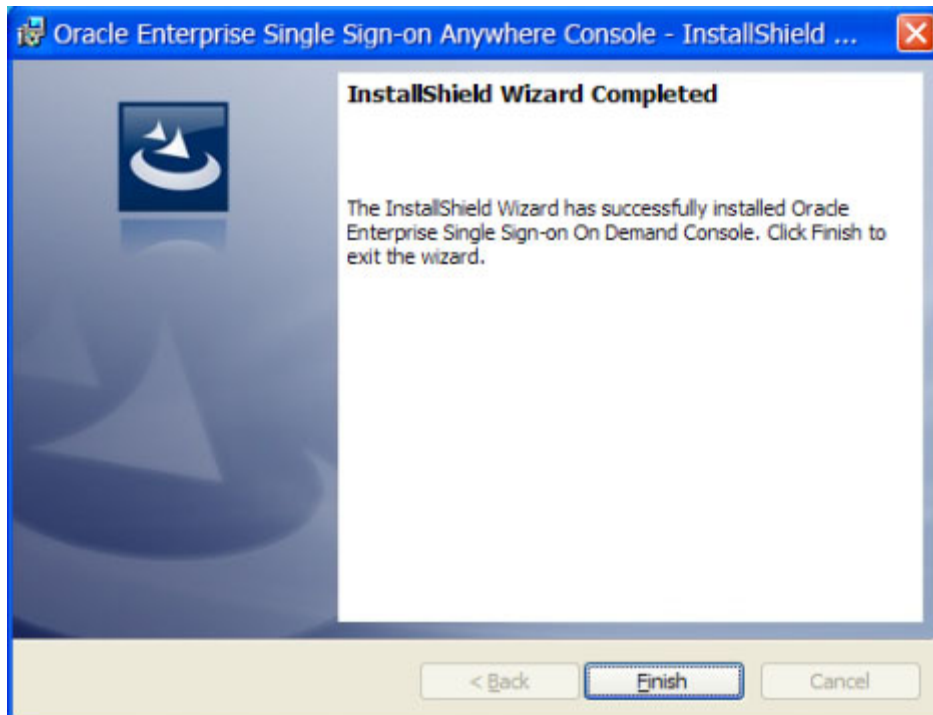
4. Select **Complete** setup. ESSO-Anywhere does not require any setup customization. Select the **Custom** option only to specify a directory other than the default. Click **Next >**.



5. Click **Install** at the prompt.



6. Click **Finish** when the installation is completed.



See the [ESSO-Anywhere Administrator Guide](#) for instructions on creating your deployment package.