

Oracle Insurance

**Insbridge Rating and
Underwriting
Portal Configuration
Guide**

Release 3.13

December 2009

Copyright © 2005, 2009, Oracle and/or its affiliates. All rights reserved.

Oracle Insurance Insbridge Rating and Underwriting Portal Configuration Guide

Release 3.13

Part # E16329-01

Library # E16330-01

December 2009

Primary Authors: Mary Elizabeth Wiger

This software and related documentation are provided under a license agreement containing restrictions on use and disclosure and are protected by intellectual property laws. Except as expressly permitted in your license agreement or allowed by law, you may not use, copy, reproduce, translate, broadcast, modify, license, transmit, distribute, exhibit, perform, publish, or display any part, in any form, or by any means. Reverse engineering, disassembly, or decompilation of this software, unless required by law for interoperability, is prohibited.

The information contained herein is subject to change without notice and is not warranted to be error-free. If you find any errors, please report them to us in writing.

If this software or related documentation is delivered to the U.S. Government or anyone licensing it on behalf of the U.S. Government, the following notice is applicable:

U.S. GOVERNMENT RIGHTS

Programs, software, databases, and related documentation and technical data delivered to U.S. Government customers are "commercial computer software" or "commercial technical data" pursuant to the applicable Federal Acquisition Regulation and agency-specific supplemental regulations. As such, the use, duplication, disclosure, modification, and adaptation shall be subject to the restrictions and license terms set forth in the applicable Government contract, and, to the extent applicable by the terms of the Government contract, the additional rights set forth in FAR 52.227-19, Commercial Computer Software License (December 2007). Oracle USA, Inc., 500 Oracle Parkway, Redwood City, CA 94065.

This software is developed for general use in a variety of information management applications. It is not developed or intended for use in any inherently dangerous applications, including applications which may create a risk of personal injury. If you use this software in dangerous applications, then you shall be responsible to take all appropriate fail-safe, backup, redundancy, and other measures to ensure the safe use of this software. Oracle Corporation and its affiliates disclaim any liability for any damages caused by use of this software in dangerous applications.

Oracle is a registered trademark of Oracle Corporation and/or its affiliates. Other names may be trademarks of their respective owners.

This software and documentation may provide access to or information on content, products, and services from third parties. Oracle Corporation and its affiliates are not responsible for and expressly disclaim all warranties of any kind with respect to third-party content, products, and services. Oracle Corporation and its affiliates will not be responsible for any loss, costs, or damages incurred due to your access to or use of third-party content, products, or services.

Where an Oracle offering includes third party content or software, we may be required to include related notices. For information on third party notices and the software and related documentation in connection with which they need to be included, please contact the attorney from the Development and Strategic Initiatives Legal Group that supports the development team for the Oracle offering. Contact information can be found on the Attorney Contact Chart.

The information contained in this document is for informational sharing purposes only and should be considered in your capacity as a customer advisory board member or pursuant to your beta trial agreement only. It is not a commitment to deliver any material, code, or functionality, and should not be relied upon in making purchasing decisions. The development, release, and timing of any features or functionality described in this document remains at the sole discretion of Oracle.

This document in any form, software or printed matter, contains proprietary information that is the exclusive property of Oracle. Your access to and use of this confidential material is subject to the terms and conditions of your Oracle Software License and Service Agreement, which has been executed and with which you agree to comply. This document and information contained herein may not be disclosed, copied, reproduced, or distributed to anyone outside Oracle without prior written consent of Oracle. This document is not part of your license agreement nor can it be incorporated into any contractual agreement with Oracle or its subsidiaries or affiliates.

CONTENTS

	PREFACE	III
	Audience	iii
	Related Documents	iii
	Conventions	iii
	System Requirements.....	iii
CHAPTER 1		
	INTRODUCTION.....	4
	CONFIGURATION	4
SUPPORT		
	CONTACTING SUPPORT	6
	TTY Access to Oracle Support Services	6

PREFACE

Welcome to the *Oracle Insurance Insbridge Rating and Underwriting Portal Configuration Guide*. This document describes the creation of a portal for Oracle Insurance Insbridge Rating and Underwriting System (IBRU).

AUDIENCE

This guide is intended for system administrators who are tasked with administering the IBRU System. Portal creation requires administrative access to the IBFA physical machine.

RELATED DOCUMENTS

For more information, refer to the following Oracle resources:

The Oracle Insurance Insbridge Rating and Underwriting Framework Administrator User Guide.

The Oracle Insurance Insbridge Rating and Underwriting SoftRater User Guide.

You can view these guides in-line at this address:

<http://www.oracle.com/technology/documentation/insurance.html>

CONVENTIONS

The following text conventions are used in this document:

Convention	Description
bold	Boldface type indicates graphical user interface elements associated with an action.
<i>italic</i>	Italic type indicates book titles, emphasis, or placeholder variables for which you supply particular values.
<code>monospace</code>	Monospace type indicates commands within a paragraph, URLs, code in examples, text that appears on the screen, or text that you enter.

SYSTEM REQUIREMENTS

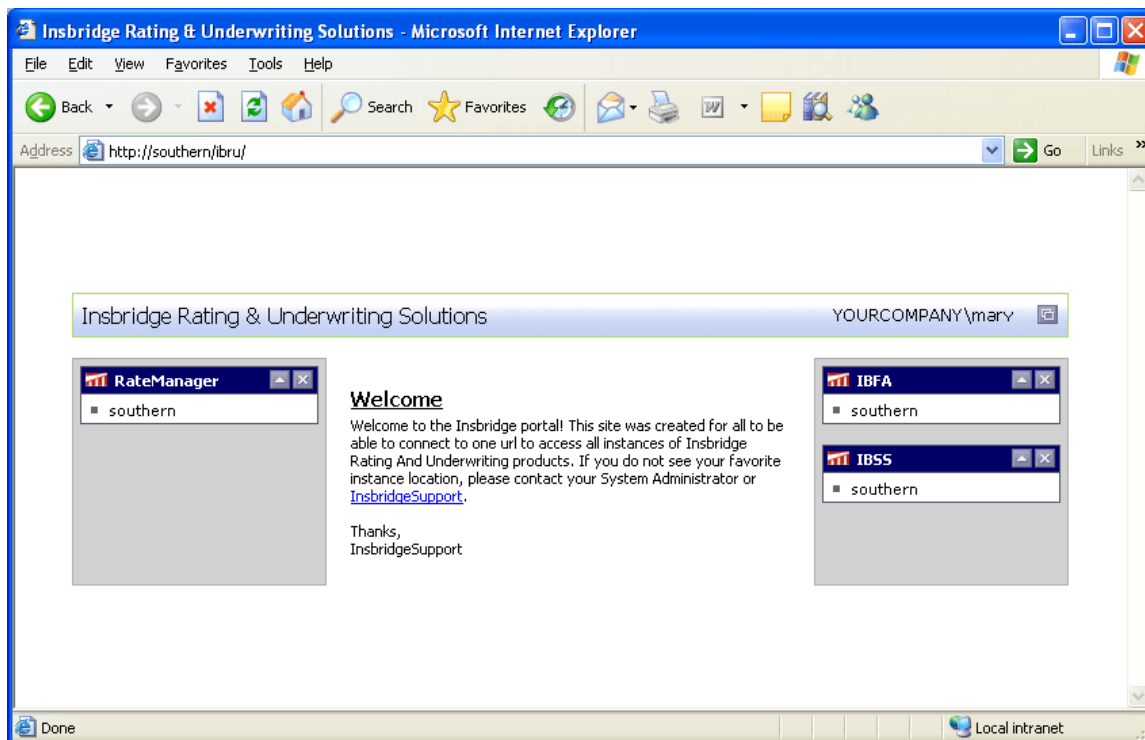
For minimum operating system and hardware requirements, please see the Hardware Software requirements guide.

INTRODUCTION

The Oracle Insurance Insbridge Rating and Underwriting Portal (Portal) is a single point of access to the Oracle Insurance Insbridge Rating and Underwriting (IBRU) system. The portal is a Windows Authenticated web application that contains links to the main IBRU components:

Oracle Insurance Insbridge Rating and Underwriting RateManager (RateManager)
Oracle Insurance Insbridge Rating and Underwriting Framework Administrator (IBFA)
Oracle Insurance Insbridge Rating and Underwriting SoftRater Server (IBSS)

Access to each component is determined by permissions set by the system administrator. Anonymous access is disabled on this web by default. Any version of RateManager from 3.8 onwards can have a portal created.



CONFIGURATION

You will not be able to configure the portal unless you have access to the server where IBRU has been installed. If you are going to create an IBSS link, you also must know what port IBSS is using.

1. Verify that a "Global" database connection named "controller" was created in IBFA. You will use this connection to point to your IB_CLIENT security database. If not, you will need to create one.

2. Create or Update your RateManager user(s) to be network user(s), and update the RateManager usernames to match the username used by your LDAP database.
3. The following virtual directory will be created as a part of the Oracle Insurance Insbridge Framework installation.

[http://\[MACHINE_NAME\]/IBRU](http://[MACHINE_NAME]/IBRU)

In this directory, locate: [\[INSBRIDGE_INSTALL_DIR\]\Webs\IBRU\Xml](#)

Using the table below, create and then add files for IBFA, IBSS and RateManager.

ELEMENT	DATATYPE	DESCRIPTION	REQU IRED
<loc>		Insbridge document namespace node	Y
<machine>		Batch request node	Y
D	String	Description displayed on the portal	Y
V	String	URL to the Skywire Application	Y

File Name: IBFA.xml

Code:

```
<loc>
  <machine d="Localhost" v="http://localhost/IBFA" />
</loc>
```

File Name: IBSS.xml

Code:

```
<loc>
  <machine d="Localhost" v="http://localhost:XXXX/IBSS" />
</loc>
```

Where XXXX is the port used. For example, in WebSphere, IBSS uses port 9080. For WebLogic, IBSS uses port 7001. For JBoss, IBSS uses port 8080.

File Name: RMXX.xml

Code:

```
<loc>
  <machine d="Localhost"
v="http://localhost/RMXX/LoginApps/Network/RM.aspx" />
</loc>
```

For versions 3.8 and 3.9, you will have to define the version of RateManager being used. For example, if you are on RateManager 3.9, you will create RM39.xml.

For version 3.10 and greater, you will only need to use RM. No version number will be required. You will create RM.xml.

4. After you have created the files, add them to the [\[INSBRIDGE_INSTALL_DIR\]\Webs\IBRU\Xml](#) directory. When you complete the tasks above, your user(s) will now have a single sign-on point for IBRU.

NOTE: You can create and use all three options or just the ones you need.

CONTACTING SUPPORT

If you need assistance with an Oracle Insurance Insbridge Rating and Underwriting System product, please log a Service Request using My Oracle Support at <https://support.oracle.com/>.

Address any additional inquiries to:

Oracle Corporation
World Headquarters
500 Oracle Parkway
Redwood Shores, CA 94065
U.S.A.

Worldwide Inquiries:
Phone: +1.650.506.7000
Fax: +1.650.506.7200
oracle.com

TTY ACCESS TO ORACLE SUPPORT SERVICES

Oracle provides dedicated Text Telephone (TTY) access to Oracle Support Services within the United States of America 24 hours a day, seven days a week. For TTY support, call 800.446.2398.