

Oracle Insurance

**Insbridge Rating and
Underwriting
ESI User Guide**

Release 3.13

December 2009

Copyright © 2005, 2009, Oracle and/or its affiliates. All rights reserved.

Oracle Insurance Insbridge Rating and Underwriting ESI User Guide

Release 3.13

Part # E16319-01

Library # E16330-01

December 2009

Primary Authors: Mary Elizabeth Wiger

This software and related documentation are provided under a license agreement containing restrictions on use and disclosure and are protected by intellectual property laws. Except as expressly permitted in your license agreement or allowed by law, you may not use, copy, reproduce, translate, broadcast, modify, license, transmit, distribute, exhibit, perform, publish, or display any part, in any form, or by any means. Reverse engineering, disassembly, or decompilation of this software, unless required by law for interoperability, is prohibited.

The information contained herein is subject to change without notice and is not warranted to be error-free. If you find any errors, please report them to us in writing.

If this software or related documentation is delivered to the U.S. Government or anyone licensing it on behalf of the U.S. Government, the following notice is applicable:

U.S. GOVERNMENT RIGHTS

Programs, software, databases, and related documentation and technical data delivered to U.S. Government customers are "commercial computer software" or "commercial technical data" pursuant to the applicable Federal Acquisition Regulation and agency-specific supplemental regulations. As such, the use, duplication, disclosure, modification, and adaptation shall be subject to the restrictions and license terms set forth in the applicable Government contract, and, to the extent applicable by the terms of the Government contract, the additional rights set forth in FAR 52.227-19, Commercial Computer Software License (December 2007). Oracle USA, Inc., 500 Oracle Parkway, Redwood City, CA 94065.

This software is developed for general use in a variety of information management applications. It is not developed or intended for use in any inherently dangerous applications, including applications which may create a risk of personal injury. If you use this software in dangerous applications, then you shall be responsible to take all appropriate fail-safe, backup, redundancy, and other measures to ensure the safe use of this software. Oracle Corporation and its affiliates disclaim any liability for any damages caused by use of this software in dangerous applications.

Oracle is a registered trademark of Oracle Corporation and/or its affiliates. Other names may be trademarks of their respective owners.

This software and documentation may provide access to or information on content, products, and services from third parties. Oracle Corporation and its affiliates are not responsible for and expressly disclaim all warranties of any kind with respect to third-party content, products, and services. Oracle Corporation and its affiliates will not be responsible for any loss, costs, or damages incurred due to your access to or use of third-party content, products, or services.

Where an Oracle offering includes third party content or software, we may be required to include related notices. For information on third party notices and the software and related documentation in connection with which they need to be included, please contact the attorney from the Development and Strategic Initiatives Legal Group that supports the development team for the Oracle offering. Contact information can be found on the Attorney Contact Chart.

The information contained in this document is for informational sharing purposes only and should be considered in your capacity as a customer advisory board member or pursuant to your beta trial agreement only. It is not a commitment to deliver any material, code, or functionality, and should not be relied upon in making purchasing decisions. The development, release, and timing of any features or functionality described in this document remains at the sole discretion of Oracle.

This document in any form, software or printed matter, contains proprietary information that is the exclusive property of Oracle. Your access to and use of this confidential material is subject to the terms and conditions of your Oracle Software License and Service Agreement, which has been executed and with which you agree to comply. This document and information contained herein may not be disclosed, copied, reproduced, or distributed to anyone outside Oracle without prior written consent of Oracle. This document is not part of your license agreement nor can it be incorporated into any contractual agreement with Oracle or its subsidiaries or affiliates.

CONTENTS

PREFACE	VI
Audience	vi
Related Documents	vi
Conventions	vi
System Requirements.....	vii
Manual History	vii

CHAPTER 1

INTRODUCTION TO INSBRIDGE EXTENDED SERVICES INTERFACE	8
---	---

CHAPTER 2

BASE DOMAIN TYPES	10
ESI_Category.....	10
ESI_DataTypes	10
ESI_Environment	10
ESI_EnvironmentTypes	10
ESI_Exception.....	11
ESI_ExceptionLevel	11
ESI_FolderGroup	11
ESI_Input	11
ESI_LOB	11
ESI_Program.....	12
ESI_ProgramTypes.....	12
ESI_ProgramVersion	12
ESI_SRP	12
ESI_SRPStatusTypes.....	13
ESI_SRPSummary	13
ESI_User.....	13
ESI_UserGroup.....	13
Use Case Summary	14

CHAPTER 3

RATEMANAGER INTERFACE.....	17
Environment Items – GetAvailableEnvironments, All Non-Secured	17
Environment Items – GetAvailableEnvironments, Selected	17
General – CreateLauchDefinition (Network Login).....	18
General – CreateLauchDefinition (RateManager Login)	18
Global Items – CreateInput.....	18
Global Items – CreateCategory	18
Global Items – CreateCategory with Inputs	19

Global Items – CreateCategoriesFromXML	19
Global Items – GetCategoryXML	19
Global Items – GetInputsXML	19
Program Items – CopyProgramVersion	19
Program Items – CreateFolderGroup	20
Program Items – CreateLine	20
Program Items – CreateProgram	20
Program Items – CreateProgramVersion	20
Program Items – DeleteFolderGroup	21
Program Items – DeleteProgram	21
Program Items – GetAvailableFolderGroups	21
Program Items – GetAvailableFolderGroupsXML	21
Program Items – UpdateFolderGroup	22
Program Items – UpdateLOB	22
Security Items – CreateUser	22
Security Items – GetAvailableUserGroups	22
Security Items – UpdateUser	22
SRP Items – CreateSRP	23
CHAPTER 4	
FRAMEWORK ADMINISTRATOR INTERFACE	24
SRP Items – CopySRP	24
SRP Items – DeleteSRP	24
SRP Items – ExportSRP	24
SRP Items – GetSRPList, ESI Created Only	25
SRP Items – GetSRPList, Selected SRP Type	25
SRP Items – ImportSRP	25
SRP Items – LoadSRP	25
SRP Items – MoveSRP	26
SRP Items – SaveFile	26
SRP Items – UnloadSRP	26
CHAPTER 5	
EXCEPTION ERRORS	27
CHAPTER 6	
ESI USER SETUP AND AUTHENTICATION	28
Adding a User	28
CHAPTER 7	
ESI SYSTEM CONFIGURATION	30
SUPPORT	
CONTACTING SUPPORT	31
TTY Access to Oracle Support Services	31

INDEX

INDEX	32
-------------	----

LIST OF FIGURES

FIGURE 1 ADDING A NEW USER..... 28

FIGURE 2 USER MANAGEMENT SCREEN..... 29

FIGURE 3 ALLOWING EXTERNAL API ACCESS..... 30

PREFACE

Welcome to the *Oracle Insurance Insbridge Rating and Underwriting ESI Guide*. This guide describes how you can configure and use the Insbridge Extended Services Interface (ESI).

AUDIENCE

This guide is intended for application developers, programmers and others tasked with configuring the ESI interface. Users should be familiar with Visual Studio.

RELATED DOCUMENTS

For more information, refer to the following Oracle resources:

The Oracle Insurance Insbridge Rating and Underwriting RateManager User Guide.

The Oracle Insurance Insbridge Rating and Underwriting EIS_Help File.

The Oracle Insurance Insbridge Rating and Underwriting Framework Administrator User Guide.

You can view these guides in-line at this address:

<http://www.oracle.com/technology/documentation/insurance.html>

CONVENTIONS

The following text conventions are used in this document:

Convention	Description
bold	Boldface type indicates graphical user interface elements associated with an action.
<i>italic</i>	Italic type indicates book titles, emphasis, or placeholder variables for which you supply particular values.
<code>monospace</code>	Monospace type indicates commands within a paragraph, URLs, code in examples, text that appears on the screen, or text that you enter.

SYSTEM REQUIREMENTS

For minimum operating system and hardware requirements, please see the Hardware Software requirements guide.

Oracle Insurance recommends the following system requirements for client workstations for optimal performance. Currently, Insbridge ESI only supports US English.

Insbridge ESI Clients:

- Operating System – Windows 2000 Professional (with service pack 3 or later) or Window XP Professional (with service pack 1a or later)
- Microsoft .NET 2.0 and 3.5
- Microsoft Web Services Enhancements 3.0 for Microsoft .NET Framework

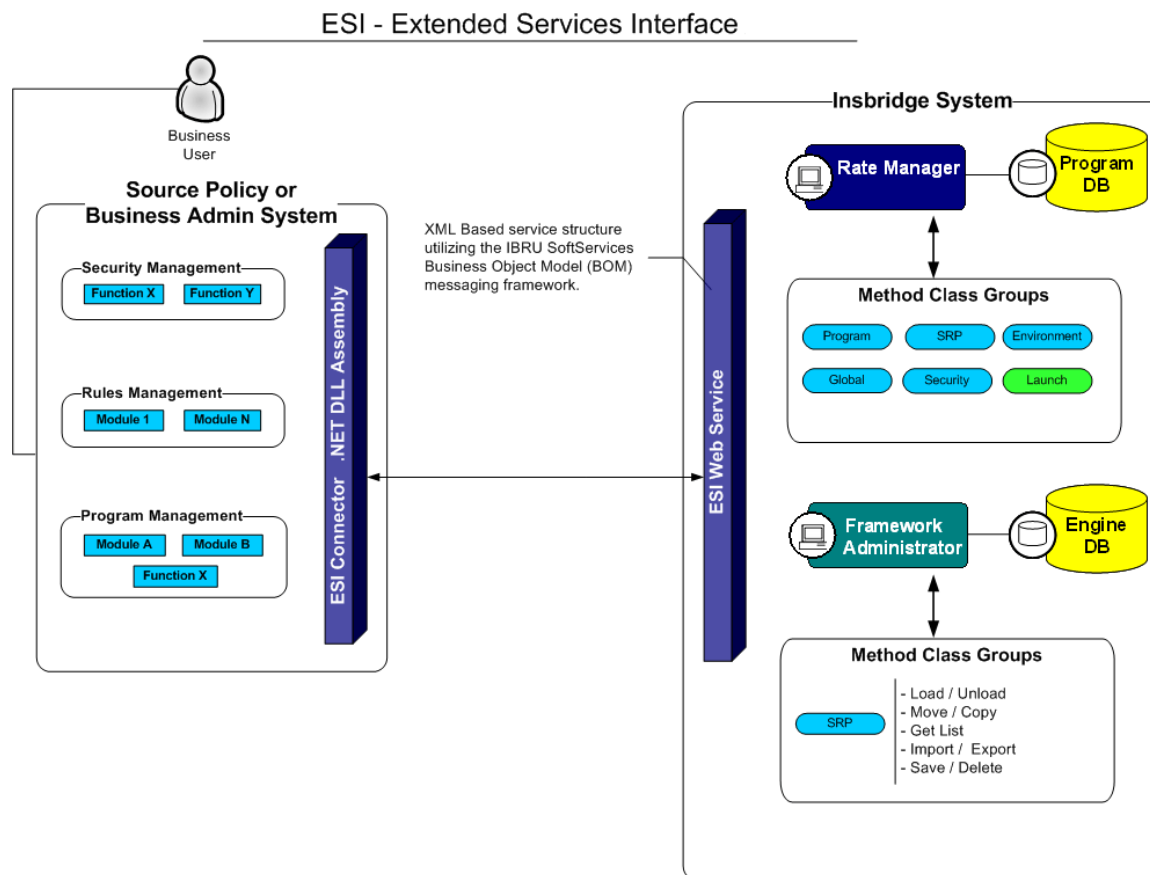
Manual History

New editions incorporate any updates issued since the previous edition.

Edition	Publication Number	Product Version	Publication Date	Comment
1 st Edition	P01-767-01	V 3.11.01	December 2008	Initial release
2 nd Edition	P01-767-02	V 3.12.00	July 2009	Update Version
3 rd Edition	P01-767-03	V 3.13.00	December 2009	Update Version

INTRODUCTION TO INSBRIDGE EXTENDED SERVICES INTERFACE

Oracle Insurance Insbridge Rating and Underwriting Extended Services Interface (ESI) is a library module designed to provide remote services to the Insbridge Rating and Underwriting (IBRU) business services without directly utilizing the system User Interfaces (UI).



ESI allows users to pass information between a user's source policy or business admin system and the RateManager system or the Insbridge Framework Administrator (IBFA) without using either the RateManager or IBFA UI. Information is passed through a custom built interface that resides on a source policy or business admin system on the client side to the ESI web service that resides on the IBRU side. The information is processed and results returned from the ESI web service back to the custom built interface into the client's source policy or business admin system.

ESI is designed to operate on Insbridge version 3.11 or higher and will connect with:

- Oracle Insurance IBRU RateManager Interface
- Oracle Insurance Framework Administrator Interface

For example, if you had a vendor Policy Administration system and wanted to provide integrated product management through your custom solution; ESI would allow you to model and use the workflow of the IBRU business services and functions but control all the user presentation aspects through your custom product interface.

Rule and Functionality Highlights

- ESI is available on Insbridge Rating and Underwriting version 3.11 or higher.
- ESI will be loaded with the IBFA installation. To locate ESI, look under the Insbridge directory for the SDK/ESI file; [INSTALL_DIR]\Insbridge\SDK\ESI. This file will contain two items:
 - Insbridge.Net.Fwk.ESI.dll
 - ESI_Help.chm
- ESI entries are immediate. There is no lag time or system sync required.
- An ESI cannot be recalled or undone. If an ESI needs to be edited, for example a folder has an incorrect name; you must enter RateManager or IBFA and make the changes there.
- ESI works with the default subline in the folder of your choice for any line of business.
- Unless specifically stated as Optional, all Inputs are **Required**.

NOTE: For further details, please see the ESI_Help.chm file.

BASE DOMAIN TYPES

Base ESI domain types represent the business nouns with in the Insbridge system. These data structures represent the majority of the business payload.

ESI_Category

```
public class ESI_Category
{
    public int Id;
    public int Line;
    public string Name;
    public int ParentId;
}
```

ESI_DataTypes

```
public enum ESI_DataTypes
{
    dtInteger    = 0,
    dtString     = 1,
    dtFloat      = 2,
    dtDate       = 3
}
```

ESI_Environment

```
public class ESI_Environment
{
    public string Name;
    public ESI_EnvironmentTypes Type;
    public bool Secure;
    public bool Default;
}
```

ESI_EnvironmentTypes

```
public enum ESI_EnvironmentTypes
{
    ALL    = -1,
    DEV    = 0,
    QA     = 1,
    PROD   = 2
}
```

ESI_Exception

```
public class ESI_Exception : Exception
{
    public ESI_Exception Level;
    public string Message;
    public string Stack;
}
```

ESI_ExceptionLevel

```
public enum ESI_ExceptionLevel
{
    Critical    = 1,
    Warning     = 2,
    Information  = 3
}
```

ESI_FolderGroup

```
public class ESI_FolderGroup
{
    public int Id;
    public int Line;
    public string Name;
    public int ParentId;
}
```

ESI_Input

```
public class ESI_Input
{
    public int Id;
    public int Line;
    public string Name;
    public int Category;
    public ESI_DataTypes Type;
}
```

ESI_LOB

```
public class ESI_LOB
{
    public int Id;
    public string TypeDesc;
    public string DateMask;
    public int Active;
}
```

ESI_Program

```
public class ESI_Program
{
    public ESI_ProgramTypes Type;
    public string Name;
    public int Line;
    public int Id;
    public int FolderGroup;
    public string DateMask;
    public string Description;
    public string Note;
    public int StateId;
}
```

NOTE: For versions 3.12 and higher, the public string NOTE will no longer be available due to a schema change. That attribute must be left blank.

ESI_ProgramTypes

```
public enum ESI_ProgramTypes
{
    ptProgram = 0,
    ptWorkFlow = 1
}
```

ESI_ProgramVersion

```
public class ESI_ProgramVersion
{
    public int Line;
    public int ParentProgramId;
    public int VersionNumber;
    public int FolderGroup;
    public string Name;
    public List<string> EffectiveDates;
}
```

ESI_SRP

```
public struct ESI_SRP
{
    public string FileName;
    public ESI_Environment Environment;
    public ESI_SRPSummary SummaryInfo;
    public ESI_SRPStatusTypes Status;
}
```

ESI_SRPStatusTypes

```
public enum ESI_SRPStatusTypes
{
    sstNotLoaded    = 0,
    sstLoaded       = 1,
    sstLoadedButNotOnDisk = 2
}
```

ESI_SRPSummary

```
public struct ESI_SRPSummary
{
    public int Line;
    public string LineName;
    public int Program;
    public string ProgramName;
    public int Version;
    public string CreateBy;
    public string CreateDate;
}
```

ESI_User

```
public class ESI_User
{
    public string Id;
    public string Username;
    public string FirstName;
    public string LastName;
    public string Department;
    public string CompanyId;
    public string PhoneNumber;
    public string eMail;
    public bool PasswordExpires;
    public List<ESI_UserGroup> Groups;
}
```

ESI_UserGroup

```
public class ESI_UserGroup
{
    public string Id;
    public string Name;
    public string Description;
}
```


USE CASE SUMMARY

The following table is a quick guide to the function available for ESI.

Business Use Case	Methods to Use	Result
General – Open URL		
Create Launch Definition – using a Network login	<u>General – CreateLaunchDefinition (Network Login)</u>	Method will return a URL for an existing program using a network login.
Create Launch Definition – using a RateManager login	<u>General – CreateLaunchDefinition (RateManager Login)</u>	Method will return a URL for an existing program using a RateManager login.
Programs		
Add	<u>Program Items – CreateProgram</u>	Create a new program.
Add New Version	<u>Program Items – CreateProgramVersion</u>	Creates a new version of an existing program.
Copy a Program Version	<u>Program Items – CopyProgramVersion</u>	Copies an existing Insbridge program version to a new specified version.
Delete	<u>Program Items – DeleteProgram</u>	Removes a program.
Folder Groups		
Add	<u>Program Items – CreateFolderGroup</u>	Creates a new folder.
Delete	<u>Program Items – DeleteFolderGroup</u>	Removes a folder.
List Folders	<u>Program Items – GetAvailableFolderGroups</u>	Returns a list of folders in an LOB.
List Folders	<u>Program Items – GetAvailableFolderGroupsXML</u>	Returns an XML string of all available folders in an LOB.
Update	<u>Program Items – UpdateFolderGroup</u>	Updates the name or location of a folder.

Line of Business		
Add	<u>Program Items – CreateLine</u>	Creates a new LOB.
Update	<u>Program Items – UpdateLOB</u>	Updates an LOB.
SRP – RateManager		
Add	<u>SRP Items – CreateSRP</u>	Creates an SRP and returns the SRP object.
Global Items		
Add	<u>Global Items – CreateInput</u>	Creates a new input.
Add	<u>Global Items – CreateCategory</u>	Creates a new category.
Add	<u>Global Items – CreateCategory with Inputs</u>	Creates a new category that includes inputs.
Add	<u>Global Items – CreateCategoriesFromXML</u>	Creates a new category using an XML string.
List Inputs	<u>Global Items – GetInputsXML</u>	Returns an XML string of all inputs in an LOB.
List Inputs	<u>Global Items – GetCategoryXML</u>	Returns an XML string of all categories in an LOB.
Security Items		
Add	<u>Security Items – CreateUser</u>	Creates a new user.
List	<u>Security Items – GetAvailableUserGroups</u>	Returns a list of all available user groups.
Update	<u>Security Items – UpdateUser</u>	Updates a user's information.
Environment Items		
List	<u>Environment Items – GetAvailableEnvironments Non-Secured</u>	Returns a list of all available non-secured environments.
List	<u>Environment Items – GetAvailableEnvironments, Selected</u>	Returns a list of all available environments within a selected environment type.

Business Use Case	Methods to Use	Result
SRP– IBFA		
Copy	<u>SRP Items – CopySRP</u>	Copies an SRP from the current environment into a selected environment.
Delete	<u>SRP Items – DeleteSRP</u>	Deletes an SRP from the disk.
Export	<u>SRP Items – ExportSRP</u>	Exports an SRP from IBFA and converts it to bytes.
Import	<u>SRP Items – ImportSRP</u>	Imports SRP bytes into an IBFA environment.
List	<u>SRP Items – GetSRPList, All</u>	Returns a list of all ESI created SRPs in a select environment.
List	<u>SRP Items – GetSRPList, Selected</u>	Returns a list of certain types of SRPs in a select environment.
Load	<u>SRP Items – LoadSRP</u>	Loads an SRP into an IBFA environment.
Move	<u>SRP Items – MoveSRP</u>	Moves an SRP from the current environment to the passed environment
Save	<u>SRP Items – SaveFile</u>	Saves the bytes you pass into a physical file.
Unload	<u>SRP Items – UnloadSRP</u>	Unloads an SRP from a selected environment.

RATEMANAGER INTERFACE

Class Definition

```
public class RateManager
{
    public const string gAppID = "RateManager";

    public RateManager(    string ApplicationTokenKey,
                        int    SubscriberId,
                        string UserId,
                        string TargetInstance)

    public RateManager(    string ApplicationTokenKey,
                        int    SubscriberId,
                        string TargetInstance)
```

Environment Items – GetAvailableEnvironments, All Non-Secured

Business Functionality

- Gets all the available non-secured environments.
- This ESI interfaces provides the ability for an external system to programmatically retrieve meta-data about all the available non-secured Environments in order for the system to programmatically invoke the other ESI deployment related API's.

Inputs

- No inputs

Outputs

- List of ESI_Environment objects.

Environment Items – GetAvailableEnvironments, Selected

Business Functionality

- Gets all the available environments for a particular environment type.
- This ESI interfaces provides the ability for an external system to programmatically retrieve meta-data about the available Environments in order for the system to programmatically invoke the other ESI deployment related API's and pass in the correct environment data object.

Inputs

- Environment Type
- Include Secured or Not

Outputs

- List of ESI_Environment objects.

General – CreateLauchDefinition (Network Login)

Business Functionality

- Method will return a URL for an existing program or folder. This method uses the Network login for authentication. Requires custom authentication setup in RateManager Security. See Authentication.

Inputs

- Line ID
- Folder or Program ID
- URL Level

Outputs

- Returns a URL string to launch a Program or Folder.

General – CreateLauchDefinition (RateManager Login)

Business Functionality

- Method will return a URL for an existing program or folder. This method uses the standard RateManager login for authentication.

Inputs

- Line ID
- Folder or Program ID
- URL Level

Outputs

- Returns a URL string to launch a Program or Folder.

Global Items – CreateInput

Business Functionality

- Creates a new global level input in a particular LOB.

Inputs

- ESI_Input object

Outputs

- Returns the ID of the newly created Input if succeeded or -1 if failed.

Global Items – CreateCategory

Business Functionality

- Creates a category in a particular LOB.

Inputs

- ESI_Category object

Outputs

- Returns the ID of the newly created Category if succeeded or -1 if failed.

Global Items – CreateCategory with Inputs

Business Functionality

- Creates a category with inputs in a particular LOB.

Inputs

- ESI_Category object
- List of ESI_Input objects

Outputs

- No outputs.

Global Items – CreateCategoriesFromXML

Business Functionality

- Creates one or more categories in your default subline using an XML string.

Inputs

- None

Outputs

- Returns a List of ESI_Category.

Global Items – GetCategoryXML

Business Functionality

- Gets an XML string of all the categories in a particular LOB.

Inputs

- ESI_Category object

Outputs

- Return an XML string.

Global Items – GetInputsXML

Business Functionality

- Gets an XML string of all the inputs of a particular LOB.

Inputs

- LineID

Outputs

- Returns an XML string that includes all the inputs of that LOB.

Program Items – CopyProgramVersion

Business Functionality

- Copies an existing Insbridge program version to a new specified program version with the option to copy the definition only or copy the definition and all data.
 - **Copy Definitions Only:** This option will copy all elements of the program with the exception of the data contained in mapped variables.
 - **Copy Definitions & All Data:** This option will copy all elements of the program,

including the data contained in mapped variables.

Inputs

- New Program Version
- Source Program Version
- Copy Option

Outputs

- Returns an ESI_ProgramVersion object.

Program Items – CreateFolderGroup

Business Functionality

- Creates a new folder in a particular LOB.

Inputs

- ESI_FolderGroup object

Outputs

- Returns an ESI_FolderGroup object.

Program Items – CreateLine

Business Functionality

- Creates a new line of business. The line of business, if activated, will be displayed on the RateManager navigation bar immediately. In order for any users to use the new line, groups must have access privileges granted.

Inputs

- ESI_LOB object

Outputs

- Returns the ID of the newly created Line if succeeded or -1 if failed.

Program Items – CreateProgram

Business Functionality

- Creates a new Insbridge Program in the folder of your choosing.

Inputs

- ESI_Program object

Outputs

- ESI_Program object.

NOTE: For versions 3.12 and higher, the public string NOTE will no longer be available due to a schema change. That attribute must be left blank.

Program Items – CreateProgramVersion

Business Functionality

- Creates a new version of an existing program.

Inputs

- ESI_ProgramVersion object

Outputs

- Returns an ESI_ProgramVersion object.

Program Items – DeleteFolderGroup

Business Functionality

- Deletes an existing program folder. Make absolutely sure that the programs for the folder are no longer needed. Deleting a folder deletes all programs under that folder only. Subfolders and any programs in the subfolders will not be deleted but will now be unlinked.

Inputs

- ESI_FolderGroup object

Outputs

- Returns True if succeeded or False if failed.

Program Items – DeleteProgram

Business Functionality

- Deletes an existing Insbridge Program. When a program is deleted, all data (variables, algorithms, sequencing, result groups and, if an auto program, driver assignment scenarios) and versions are deleted. Make sure this is the action you want to take. Locked programs cannot be deleted and will return a fail.

Inputs

- ESI_Program object

Outputs

- Returns a pass/fail value. Pass = true and Fail = false.

Program Items – GetAvailableFolderGroups

Business Functionality

- Gets a list of Folders of a particular LOB.

Inputs

- LineID

Outputs

- Returns a list of ESI_FolderGroup objects.

Program Items – GetAvailableFolderGroupsXML

Business Functionality

- Gets an XML string of available Folders of a particular LOB.

Inputs

- Line ID

Outputs

- Returns an XML string of available Folders of a specific LOB.

Program Items – UpdateFolderGroup

Business Functionality

- Updates the name or parent of an existing program folder. When you change the parent of any folder, the folders underneath will be changed as well.

Inputs

- ESI_FolderGroup object

Outputs

- Returns the updated Folder ID if succeeded or -1 if failed.

Program Items – UpdateLOB

Business Functionality

- Updates an existing line of business: name, date mask or activation status.

Inputs

- ESI_LOB object

Outputs

- Returns "True" if succeeded or "False" if failed.

Security Items – CreateUser

Business Functionality

- Creates a new User.

Inputs

- ESI_User object

Outputs

- Returns True if succeeded or False if failed.

Security Items – GetAvailableUserGroups

Business Functionality

- Gets all the available user groups.

Inputs

- No inputs

Outputs

- Returns a list of ESI_UserGroup objects.

Security Items – UpdateUser

Business Functionality

- Updates an existing User. Password Reset must be done inside RM.

Inputs

- ESI_User object

Outputs

- Returns True if succeeded or False if failed.

SRP Items – CreateSRP

Business Functionality

- Creates a SoftRater Package (SRP) in a particular environment.
- ESI created SRP will have an identifier “API” in the filename and will show an icon on IBFA SRP list.

Inputs

- ESI_Program object
- Program Version
- ESI_Environment object

Outputs

- Returns the newly created ESI_SRP object.

FRAMEWORK ADMINISTRATOR INTERFACE

Class Definition

```
public class FrameworkAdministrator
{
    public const string gAppID = "FrameworkAdministrator";

    public FrameworkAdministrator(
        string ApplicationTokenKey,
        int SubscriberId,
        string TargetInstance)
```

SRP Items – CopySRP

Business Functionality

- Copies an SRP from the current environment to the selected environment. To determine the current environment, run the GetSRPList. This will return a list of ESI_SRP's. Every ESI_SRP has the environment and other information. CopySRP will get the current environment from the ESI_SRP object that you pass in.

Inputs

- The environment the SRP to be copied to.
- The SRP to be copied.

Outputs

- True if succeeded or False if failed.

SRP Items – DeleteSRP

Business Functionality

- Deletes an SRP from disk. To determine (or control) the environment that the SRP is deleted from, run the GetSRPList to get the ESI_SRP's. Every ESI_SRP has the environment and other information. This will tell you which environment the SRP is currently in.
- Once deleted, this package cannot be reloaded.

Inputs

- The SRP to be deleted

Outputs

- True if succeeded or False if failed

SRP Items – ExportSRP

Business Functionality

- Exports an SRP from an IBFA environment and converts it to bytes.

- You can use the bytes directly or save them to a physical file by using SaveFile() method.
- To use the SRP bytes, use a straight binary read into a byte array.

```
FileStream fs = File.OpenRead(@"C:\TEMP\abc.srp");  
byte[] srpBytes = new byte[fs.Length];  
fs.Read(srpBytes, 0, srpBytes.Length);
```

Inputs

- The environment the SRP is to be exported
- The SRP to be exported

Outputs

- The bytes of the SRP

SRP Items – GetSRPList, ESI Created Only

Business Functionality

- Gets a list of all ESI created SRPs in a particular environment.

Inputs

- The environment from where the SRPs are to be retrieved.

Outputs

- A list of ESI_SRP objects.

SRP Items – GetSRPList, Selected SRP Type

Business Functionality

- Gets a list of SRPs of certain type in a particular environment.

Inputs

- The environment from where the SRPs are to be retrieved.
- SRP type: 0 = all SRPs; 1 = ESI created SRPs.

Outputs

- A list of ESI_SRP objects.

SRP Items – ImportSRP

Business Functionality

- Imports SRP bytes into an IBFA environment.

Inputs

- The environment the SRP is to be imported into
- SRP bytes to be imported

Outputs

- True if succeeded or False if failed

SRP Items – LoadSRP

Business Functionality

- Loads an SRP into an IBFA environment so that the rating algorithms can be executed against it.
- Loading a package takes the logic stored in the package and places it in the database so

- it can be executed.
- Packages should be able to be loaded within an ESI Environment.

Inputs

- The environment the SRP is to be loaded in.
- The SRP to be loaded.

Outputs

- True if succeeded or False if failed.

SRP Items – MoveSRP

Business Functionality

- Given an ESI_SRP object as well as an ESI Environment, the API moves the SRP from the current environment to the passed-in environment.

Inputs

- The environment the SRP is to be moved to.
- The SRP to be moved.

Outputs

- True if succeeded or False if failed.

SRP Items – SaveFile

Business Functionality

- Saves the bytes you pass in to a physical file.
- It gives ASP.NET Machine Account ("ASPNET") full control of that file.

Inputs

- The bytes to be saved
- The location and name the bytes are to be saved

Outputs

- True if succeeded or False if failed

SRP Items – UnloadSRP

Business Functionality

- Unloads an SRP from a particular Environment. To determine (or control) the environment that the SRP is unloaded from, run the GetSRPList to get the ESI_SRP's. Every ESI_SRP has the environment and other information. This will tell you which environment the SRP is currently in.
- The package itself remains on disk until deleted. It is not necessary to unload a package before loading another package for the same program and version.
- If a package is loaded for a program and version that already has a package loaded, the old package will be unloaded before the new package is loaded.

Inputs

- The SRP to be unloaded.

Outputs

- True if succeed or False if failed.

EXCEPTION ERRORS

ESI_ExceptionLevel

```
public enum ESI_ExceptionLevel
{
    Critical    = 1,
    Warning     = 2,
    Information  = 3
}
```

ESI_Exception

```
public class ESI_Exception : Exception
{
    public ESI_Exception Level;
    public string Message;
    public string Stack;
}
```

An ESI_Exception will be thrown if any error happens during the API function call.

An error message will be stored in ESI_Exception.Message and the stack trace information will be stored in ESI_Exception.Stack.

There's an ESI_Exception Level which gives you one of three levels:

- **Critical** – Any error that is not being handled by RateManager or IBFA (such as a NullReferenceException) will be Critical level.
- **Warning** – Any error that is caught by RateManager or IBFA (such as missing parameter, wrong parameter type, etc) will be Warning level.
- **Information** – No error has occurred but some information needs to be returned.

ESI USER SETUP AND AUTHENTICATION

There are two types of authentication in ESI RateManager Interface:

- **Regular login** – users will send down a valid RateManager username and ESI will log the user in with that.
- **Network login** – ESI will get your windows credentials and log you in with the same username and password as the user you login to windows

You will need to set up a network user account if you want to use windows integrated login in RateManager.

Adding a User

New users can be added from the User Management screen. All new users will be assigned the default password, password. New users should log in as soon as possible and change their password.

To Add a New User

1. In RateManager, navigate to Administration>Security>**User Management**.

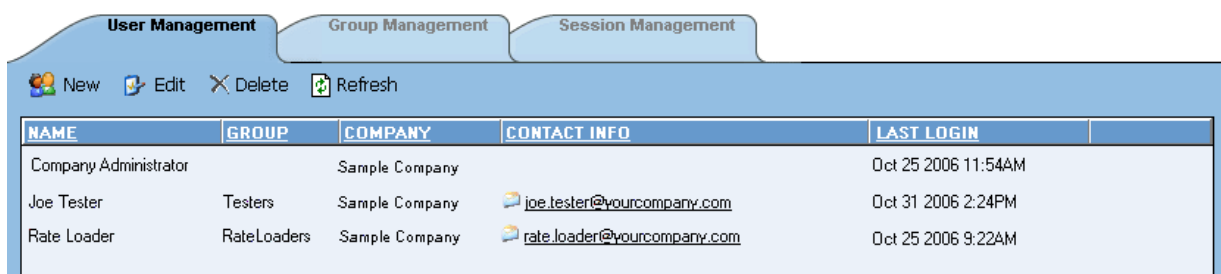


Figure 1 Adding a New User

2. Click  to open the Add User screen.

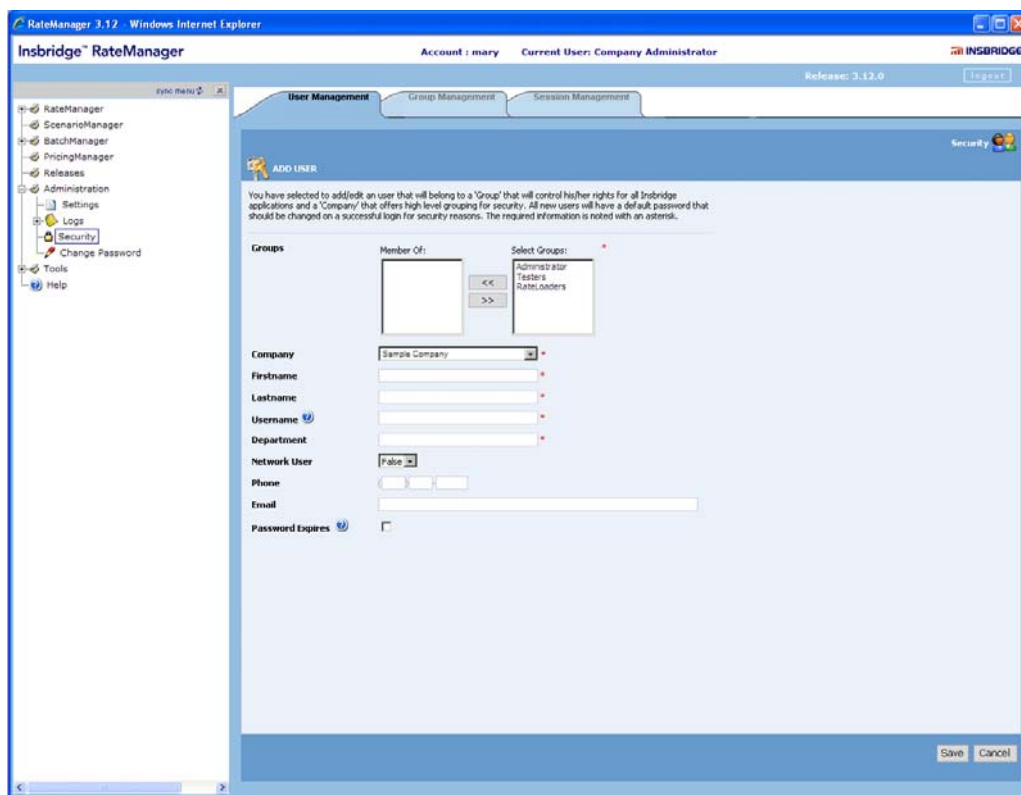




Figure 2 User Management Screen

3. Select the **Group**(s) the new user will belong to by selecting a group or groups from the Select Groups list and then clicking the  button.
4. Select the **Company** the user will belong to from the drop down listing.
5. Enter a **First** and **Last** name for the user in the appropriate text boxes.
6. Enter a **Username** for the new user. The username must be at least six, but fewer than twelve, alphanumeric characters and can include an underscore (_) or period (.).
7. Enter a **Department** for the user.
8. Select whether the new user is a **Network User** by selecting **True** or **False** from the drop down. If you select **True**, the user's credentials (username and password) will be validated using Windows Authentication Tokens. The username must match the network user ID. If you select **False**, the user must enter a valid username and password via the RateManager login screen.
9. Optionally, enter a **Phone Number** and **Email Address** for the new user.
10. If you wish for the user's password to expire, click the box next to **Password Expires**.
11. When you are finished, click . The user will be added to the system and the user list will be updated. The new user can now log in using the username you assigned them and the default password, **password**.
12. The user should change their password the first time they log in. See Changing Your Password in the RateManager User Guide for more information.

ESI SYSTEM CONFIGURATION

To use ESI's IBFA Framework functionality, you need to send down the API key when you do the ESI API call.

When IBFA is installed, a default API key will be generated and saved in IBFA. You can find it in *IBFA* ➤ *Insbridge* ➤ *Security* ➤ *External API Access*. You can disable ESI's IBFA functionality by setting it to "Disabled". For security purpose, you may want to change the key once in a while. To change the key, click on "Generate Key" and then click on "Update". Every key generated will be unique.

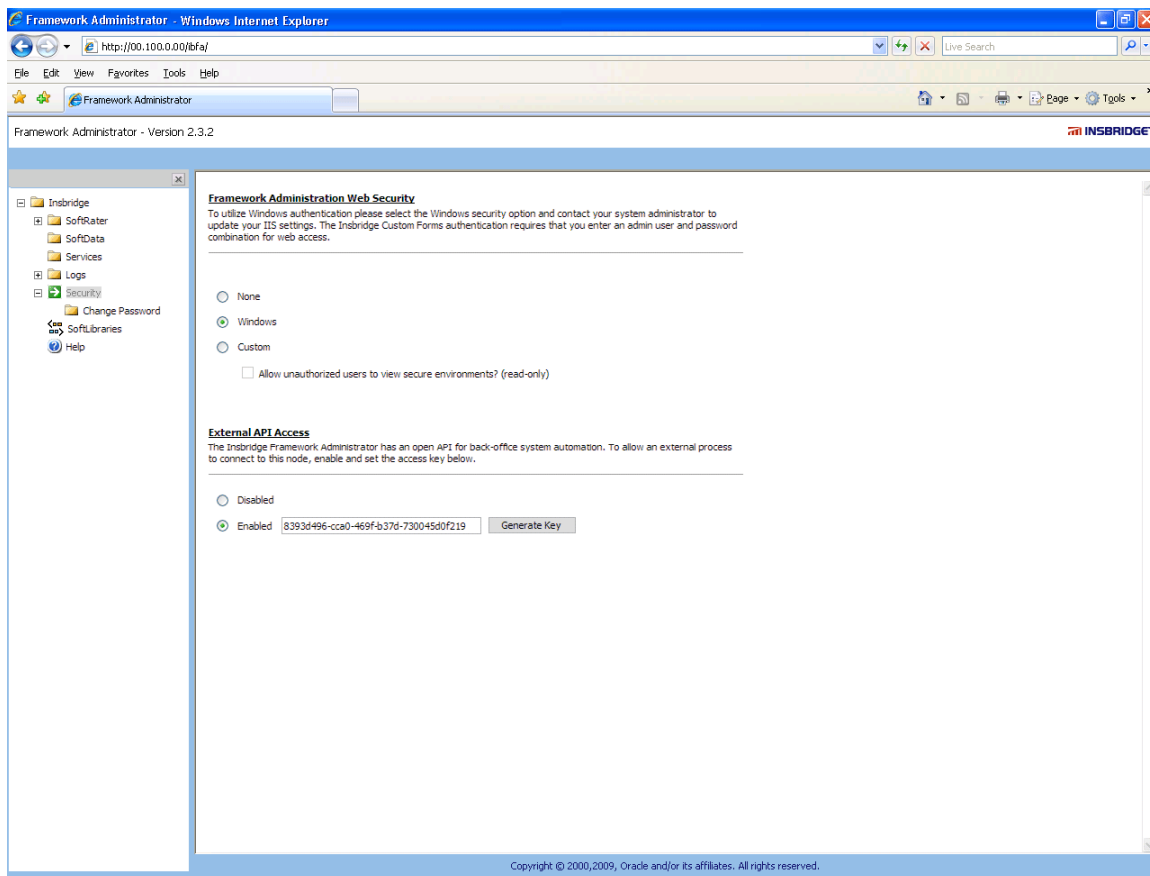


Figure 3 Allowing External API Access

CONTACTING SUPPORT

If you need assistance with an Oracle Insurance Insbridge Rating and Underwriting System product, please log a Service Request using My Oracle Support at <https://support.oracle.com/>.

Address any additional inquiries to:

Oracle Corporation
World Headquarters
500 Oracle Parkway
Redwood Shores, CA 94065
U.S.A.

Worldwide Inquiries:
Phone: +1.650.506.7000
Fax: +1.650.506.7200
oracle.com

TTY ACCESS TO ORACLE SUPPORT SERVICES

Oracle provides dedicated Text Telephone (TTY) access to Oracle Support Services within the United States of America 24 hours a day, seven days a week. For TTY support, call 800.446.2398.

Index

INDEX**A**

Adding
 New User in User Management, 28
API Key, 30
Authentication
 ESI User, 28

B

Base ESI Domain Types, 10
Business Use Case, 14

C

Category
 Create, 18
 Create from XML, 19
 Create with Inputs, 19
 Get, XML, 19
Class Definition
 IBFA, 24
 RateManager Interface, 17
Company
 Selecting for New User, 29
Copy Definitions & All Data
 Copying Programs, 19
Copy Definitions Only
 Copying Programs, 19
Copy Program Version, 19
Copy SRP, 24
Create
 Network Login, 28
Create Category, 18
 From XML, 19
 With Inputs, 19
Create Folder Groups, 20
Create Input, 18
Create Launch Definition, 18
Create LOB, 20
Create New User, 22
Create Program, 20
Create Program Version, 20
Create SRP, 23
Critical
 ESI_Exception Level, 27

D

Default
 API Key, 30
Delete Folder Groups, 21
Delete Program, 21
Delete SRP, 24

E

Edition Notice, 2
Environments
 Get Available, Non-Secured, 17
 Get Available, Selected, 17
ESI
 Overview, 8
 Rules, 9
ESI Domain Types, 10
ESI_Category, 10
ESI_DataTypes, 10
ESI_Environmen, 10
ESI_EnvironmentTypes, 10
ESI_Exception, 11, 27
ESI_Exception Level, 27
ESI_ExceptionLevel, 11, 27
ESI_FolderGroup, 11
ESI_Input, 11
ESI_LOB, 11
ESI_Program, 12
ESI_ProgramTypes, 12
ESI_ProgramVersion, 12
ESI_SRP, 12
ESI_SRPStatusTypes, 13
ESI_SRPSummary, 13
ESI_User, 13
ESI_UserGroup, 13
Example
 Business Use Case, 14
Export SRP, 24

F

Fail to Delete, 21
False
 New Users, 29
Folder
 Create, 20
 Delete, 21
 Get Available, 21
 Get Available, XML, 21
 Update, 22

G

Get Available
 Environments, Non-Secured, 17
 Environments, Selected, 17
 User Groups, 22
Get Available Folder Groups, 21
Get Available Folder Groups XML, 21
Get Category XML, 19
Get Inputs XML, 19

- Get SRP List
 - All, 25
 - Selected, 25
- Group
 - Selecting for New User, 29

I

- IBFA
 - Class Definition, 24
 - System Configuration, 30
- Import SRP, 25
- Information
 - ESI_Exception Level, 27
- Inputs
 - Create New, 18
 - Get, XML, 19

L

- Launch Definition, 18
- Load SRP, 25
- LOB
 - Create, 20
 - Update, 22
- Locked Program
 - Fail to Delete, 21

M

- Move SRP, 26

N

- Network Login
 - Create Launch Definition, 18
 - ESI Authentication, 28
- Network User
 - Selecting for New User, 29
- New User in User Management
 - Adding, 28

O

- Overview
 - ESI, 8

P

- Password
 - Default, 28
- Program
 - Copy, 19
 - Copy Definitions & All Data, 19
 - Copy Definitions Only, 19
 - Create, 20
 - Create New Version, 20
 - Delete, 21

R

- RateManager Login
 - Create Launch Definition, 18
 - ESI Authentication, 28
- Rules
 - ESI, 9
 - Username, 29

S

- Save File SRP, 26
- SRP
 - Copy, 24
 - Create, 23
 - Delete, 24
 - Export, 24
 - Get List, All, 25
 - Get List, Selected, 25
 - Import, 25
 - Load, 25
 - Move, 26
 - Save File, 26
 - Unload, 26
- System Configuration
 - IBFA, 30
- System Requirements, vii

T

- True
 - New Users, 29

U

- Unload SRP, 26
- Update Folder Groups, 22
- Update LOB, 22
- Update User, 22
- User
 - Create New, 22
 - Selecting Company for New, 29
 - Selecting Group for New, 29
 - Selecting Network User for New, 29
 - Selecting Username for New, 29
 - Update, 22
 - Validation, 29
- User Groups
 - Get Available, 22
- Username
 - Rules, 29
 - Selecting for New User, 29

W

- Warning
 - ESI_Exception Level, 27