

# Oracle Insurance IBRU Portal Configuration

July 2009

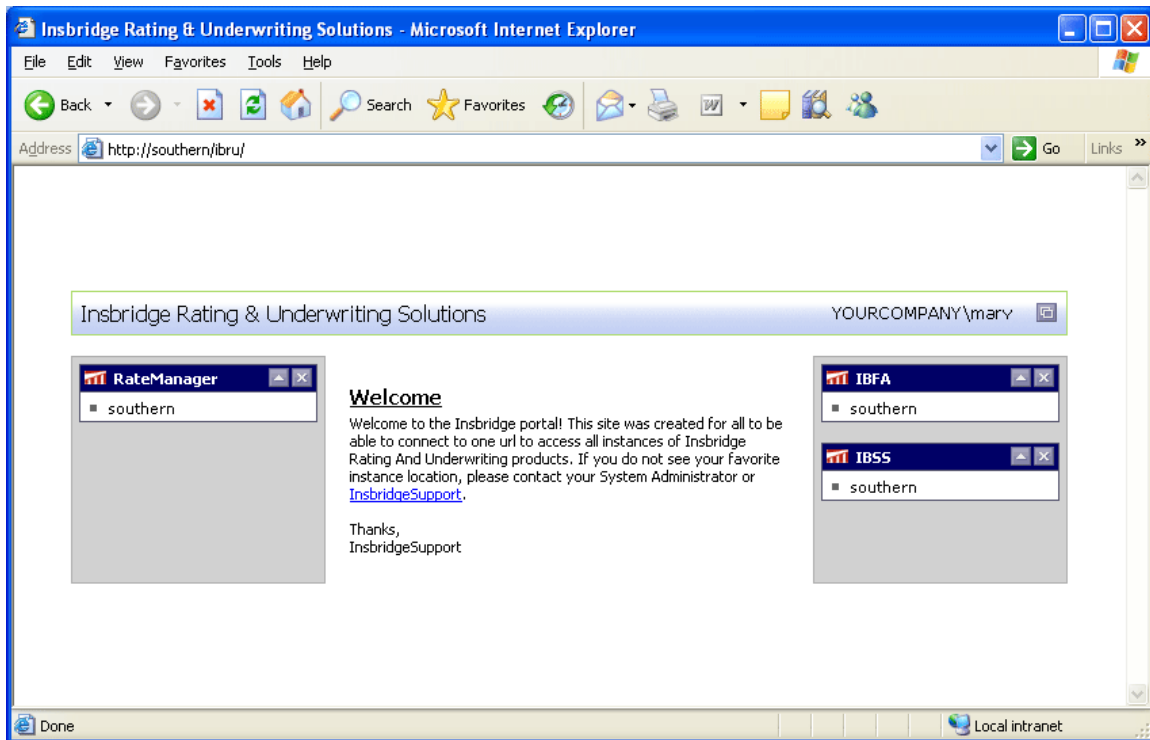
# Oracle Insurance Insbridge Rating and Underwriting Portal Configuration

## INTRODUCTION

The Oracle Insurance Insbridge Rating and Underwriting Portal (Portal) is a single point of access to the Oracle Insurance Insbridge Rating and Underwriting (IBRU) system. The portal is a Windows Authenticated web application that contains links to the main IBRU components:

Oracle Insurance Insbridge Rating and Underwriting RateManager (RateManager)  
Oracle Insurance Insbridge Rating and Underwriting Framework Administrator (IBFA)  
Oracle Insurance Insbridge Rating and Underwriting SoftRater Server (IBSS)

Access to each component is determined by permissions set by the system administrator. Anonymous access is disabled on this web by default. Any version of RateManager from 3.8 onwards can have a portal created.



## CONFIGURATION

You will not be able to configure the portal unless you have access to the server where IBRU has been installed. If you are going to create an IBSS link, you also must know what port IBSS is using.

1. Verify that a "Global" database connection named "controller" was created in IBFA. You will use this connection to point to your IB\_CLIENT security database. If not, you will need to create one.

2. Create or Update your RateManager user(s) to be network user(s), and update the RateManager usernames to match the username used by your LDAP database.
3. The following virtual directory will be created as a part of the Oracle Insurance Insbridge Framework installation.

[http://\[MACHINE\\_NAME\]/IBRU](http://[MACHINE_NAME]/IBRU)

In this directory, locate: [\[INSBRIDGE\\_INSTALL\\_DIR\]\Webs\IBRU\Xml](#)

Using the table below, create and then add files for IBFA, IBSS and RateManager.

ELEMENT	DATATYPE	DESCRIPTION	REQUIRED
<loc>		Insbridge document namespace node	Y
<machine>		Batch request node	Y
D	String	Description displayed on the portal	Y
V	String	URL to the Skywire Application	Y

**File Name: IBFA.xml**

**Code:**

```
<loc>
<machine d="Localhost" v="http://localhost/IBFA" />
</loc>
```

**File Name: IBSS.xml**

**Code:**

```
<loc>
<machine d="Localhost" v="http://localhost:XXXX/IBSS" />
</loc>
```

Where XXXX is the port used. For example, in WebSphere, IBSS uses port 9080. For WebLogic, IBSS uses port 7001. For JBoss, IBSS uses port 8080.

**File Name: RMXX.xml**

**Code:**

```
<loc>
<machine d="Localhost"
v="http://localhost/RMXX/LoginApps/Network/RM.aspx" />
</loc>
```

For versions 3.8 and 3.9, you will have to define the version of RateManager being used. For example, if you are on RateManager 3.9, you will create RM39.xml.

For version 3.10 and greater, you will only need to use RM. No version number will be required. You will create RM.xml.

4. After you have created the files, add them to the [\[INSBRIDGE\\_INSTALL\\_DIR\]\Webs\IBRU\Xml](#) directory. When you complete the tasks above, your user(s) will now have a single sign-on point for IBRU.

**NOTE:** You can create and use all three options or just the ones you need.

## Support

If you need assistance with an Oracle Insurance Insbridge Rating and Underwriting System product, please log a Service Request using My Oracle Support at <http://metalink.oracle.com>.

### Address any additional inquiries to:

**Oracle Corporation**  
World Headquarters  
500 Oracle Parkway  
Redwood Shores, CA 94065  
U.S.A.

Worldwide Inquiries:  
Phone: +1.650.506.7000  
Fax: +1.650.506.7200  
[oracle.com](http://oracle.com)



Oracle Insurance Insbridge Rating and Underwriting Portal Configuration

July 2009

Author: Mary Elizabeth Wiger

Contributing Authors:

Part #E15011-01

Library #E15014-01

Oracle Corporation  
World Headquarters  
500 Oracle Parkway  
Redwood Shores, CA 94065  
U.S.A.

Worldwide Inquiries:  
Phone: +1.650.506.7000  
Fax: +1.650.506.7200  
[oracle.com](http://oracle.com)

Copyright © 2008, Oracle and/or its affiliates. All rights reserved.

This document is provided for information purposes only and the contents hereof are subject to change without notice.

This document is not warranted to be error-free, nor subject to any other warranties or conditions, whether expressed orally or implied in law, including implied warranties and conditions of merchantability or fitness for a particular purpose. We specifically disclaim any liability with respect to this document and no contractual obligations are formed either directly or indirectly by this document. This document may not be reproduced or transmitted in any form or by any means, electronic or mechanical, for any purpose, without our prior written permission.

Oracle is a registered trademark of Oracle Corporation and/or its affiliates.

Other names may be trademarks of their respective owners. 0908