

Oracle Insurance IBRU SoftRater Server User Manual

Version 3.12

July 2009

Oracle Insurance Insbridge Rating and Underwriting SoftRater Server User Manual

Version 3.12

Part #E15005-01

Library #E15014-01

Formerly P01-729-12

July 2009

Copyright © 2008, Oracle. All rights reserved.

Primary Authors: Mary Elizabeth Wiger

The Programs (which include both the software and documentation) contain proprietary information; they are provided under a license agreement containing restrictions on use and disclosure and are also protected by copyright, patent, and other intellectual and industrial property laws. Reverse engineering, disassembly, or decompilation of the Programs, except to the extent required to obtain interoperability with other independently created software or as specified by law, is prohibited.

The information contained in this document is subject to change without notice. If you find any problems in the documentation, please report them to us in writing. This document is not warranted to be error-free. Except as may be expressly permitted in your license agreement for these Programs, no part of these Programs may be reproduced or transmitted in any form or by any means, electronic or mechanical, for any purpose.

If the Programs are delivered to the United States Government or anyone licensing or using the Programs on behalf of the United States Government, the following notice is applicable:

U.S. GOVERNMENT RIGHTS

Programs, software, databases, and related documentation and technical data delivered to U.S. Government customers are "commercial computer software" or "commercial technical data" pursuant to the applicable Federal Acquisition Regulation and agency-specific supplemental regulations. As such, use, duplication, disclosure, modification, and adaptation of the Programs, including documentation and technical data, shall be subject to the licensing restrictions set forth in the applicable Oracle license agreement, and, to the extent applicable, the additional rights set forth in FAR 52.227-19, Commercial Computer Software--Restricted Rights (June 1987). Oracle USA, Inc., 500 Oracle Parkway, Redwood City, CA 94065.

The Programs are not intended for use in any nuclear, aviation, mass transit, medical, or other inherently dangerous applications. It shall be the licensee's responsibility to take all appropriate fail-safe, backup, redundancy and other measures to ensure the safe use of such applications if the Programs are used for such purposes, and we disclaim liability for any damages caused by such use of the Programs.

The Programs may provide links to Web sites and access to content, products, and services from third parties. Oracle is not responsible for the availability of, or any content provided on, third-party Web sites. You bear all risks associated with the use of such content. If you choose to purchase any products or services from a third party, the relationship is directly between you and the third party. Oracle is not responsible for: (a) the quality of third-party products or services; or (b) fulfilling any of the terms of the agreement with the third party, including delivery of products or services and warranty obligations related to purchased products or services. Oracle is not responsible for any loss or damage of any sort that you may incur from dealing with any third party.

Oracle, JD Edwards, and PeopleSoft are registered trademarks of Oracle Corporation and/or its affiliates. Other names may be trademarks of their respective owners.

Contents

FIGURES.....	5
PREFACE.....	6
Audience.....	6
Navigating IBSS	6
System Requirements	6
Notational Conventions	7
Additional Information.....	7
Manual History	7
CHAPTER 1	8
INTRODUCTION TO SOFTRATER SERVER	8
Variations between, WebLogic, JBoss, and WebSphere.....	8
CHAPTER 2	11
INTRODUCTION TO THE SOFTRATER PAGE.....	11
Edit Options.....	12
Environment Setup.....	14
Reset Environments.....	16
Submit Insbridge XML	17
Submit Custom XML	18
Program Cache	20
Get Version.....	21
Get Config Path.....	22
Get Sample Files.....	22
Set SOAP URL or Set WSDL URL	24
Get SOAP URL or Get WSDL URL.....	24
CHAPTER 3	25
INTRODUCTION TO THE SOFTDATA PAGE.....	25
Submit XML	25
Get Version.....	26
Get Config Path.....	27
Get WSDL Files.....	27
Set SOAP URL or Set WSDL URL	29
Get SOAP URL or Get WSDL URL.....	29
CHAPTER 4	30
INTRODUCTION TO THE SOFTLIBRARIES PAGE	30
Library Setup.....	31
Get Sample Files.....	36
Reset Config.....	37
CHAPTER 5	38
UPDATE SOAP SERVICES CONFIGURATION PAGE	38
CHAPTER 6	40
UPDATE APPLICATION ENDPOINT CONFIGURATION PAGE	40
CHAPTER 7	41
VIEW LOGS	41

CHAPTER 8	42
SUPPORT	42
GLOSSARY	43
INDEX	47

Figures

FIGURE 1 SOFTRATER SERVER FOR WEBSPHERE.....	9
FIGURE 2 SOFTRATER SERVER FOR WEBLOGIC.....	10
FIGURE 3 SOFTRATER PAGE.....	11
FIGURE 4 EDIT OPTIONS	12
FIGURE 5 ENVIRONMENT SETUP	14
FIGURE 6 TESTING AN ENVIRONMENT	16
FIGURE 7 DELETING AN ENVIRONMENT	16
FIGURE 8 RESETTING THE ENVIRONMENT	17
FIGURE 9 SUBMITTING AN INSBRIDGE XML	17
FIGURE 10 SUBMITTING A CUSTOM XML.....	18
FIGURE 11 PROGRAM CACHE.....	20
FIGURE 12 GET VERSION.....	21
FIGURE 13 GET CONFIG PATH.....	22
FIGURE 14 GET SAMPLE FILES WEBSPHERE	23
FIGURE 15 GET SAMPLE FILES WEBLOGIC AND JBOSS	23
FIGURE 16 SET SOAP URL.....	24
FIGURE 17 GET SOAP URL	24
FIGURE 18 SOFTDATA PAGE	25
FIGURE 19 TESTING A SOFTDATA REQUEST FILE.....	26
FIGURE 20 GET VERSION.....	26
FIGURE 21 GET CONFIG PATH.....	27
FIGURE 22 GET WSDL FILES WEBSPHERE	28
FIGURE 23 GET WSDL FILES WEBLOGIC AND JBOSS	28
FIGURE 24 SET SOAP URL.....	29
FIGURE 25 GET SOAP URL	29
FIGURE 26 SOFTLIBRARIES MAIN MENU.....	30
FIGURE 27 SOFTLIBRARIES MAIN SCREEN	31
FIGURE 28 EDITING A SOFTLIBRARY	33
FIGURE 29 EDITING ARGUMENTS.....	34
FIGURE 30 TESTING A SOFTLIBRARY	35
FIGURE 31 GET SAMPLE FILES	36
FIGURE 32 RESET CONFIGURATION	37
FIGURE 33 SOAP SERVICES CONFIGURATION PAGE	38
FIGURE 34 SOAP ENDPOINT CONFIGURATION PAGE FOR WEBSPHERE	40
FIGURE 35 LOGS PAGE	41

Preface

Welcome to the *Oracle Insurance Insbridge Rating and Underwriting SoftRater Server User Manual*. This manual describes the settings and options of Oracle Insurance Insbridge Rating and Underwriting SoftRater Server (IBSS). IBSS is the administrative tool for the SoftRater engine. The SoftRater engine is a multi-platform component within the Oracle Insurance Insbridge Rating and Underwriting (IBRU) system that executes the rules, rating and underwriting instructions as defined by the user in Oracle Insurance Insbridge Rating and Underwriting RateManager.

The SoftRater engine is an EJB component hosted in the Application Server and accessible through HTTP SOAP Proxy, HTTP POST, and EJB – Direct JNDI interfacing. A database management system is used for content storage with support for all major DBMS vendors. IBSS runs on:

- Oracle WebLogic (WebLogic)
- JBoss, a division of Red Hat (JBoss)
- IBM WebSphere (WebSphere)

Audience

This manual is intended for system administrators who are tasked with setting up and managing Insbridge rating environments. Users should be familiar with their company's environments, databases and the requirements of the end users.

Navigating IBSS

Navigate through IBSS using the top and side bar menus. Your browser's tool bars will not be displayed.

System Requirements

System requirements for server and clients can be found in Oracle Insurance Insbridge Recommended Operating Environments Guide. This guide can be obtained from Oracle Insurance Support.

Notational Conventions

This section explains the conventions used in this book:

- Menu selections are shown with arrows. For example, the command to select the **Print** choice from the **File** menu looks as follows:

Select **File** ► **Print**

- File names and path names are shown in **bold**.
- New or emphasized terms are shown in *italics*.

Additional Information

For more information, see these Oracle Insurance resources:

- Oracle Insurance IBRU RateManager User Guide
- Oracle Insurance IBRU PricingManager User Guide
- Oracle Insurance IBRU BatchManager User Guide
- Oracle Insurance IBRU SoftRater User Guide

Manual History

New editions incorporate any updates issued since the previous edition.

Edition	Publication Number	Product Version	Publication Date	Comment
1 st Edition	P01-729-01	V 3.5	June 2005	
2 nd Edition	P01-729-02	V 3.6	June 2006	Update
3 rd Edition	P01-729-03	V 3.7	December 2006	Update Version
4 th Edition	P01-729-04	V 3.8	July 2007	Update Version
5 th Edition	P01-729-05	V 3.8.3	October 2007	Update Version
6 th Edition	P01-729-06	V 3.8.5	November 2007	Update Version
7 th Edition	P01-729-07	V 3.8.7	January 2008	Update Version
8 th Edition	P01-729-08	V 3.8.8	March 2008	Update Version
9 th Edition	P01-729-09	V 3.9	May 2008	Update Version
10 th Edition	P01-729-10	V 3.10	October 2008	Update Version
11 th Edition	P01-729-11	V 3.11	December 2008	Update Version
12 th Edition	P01-729-12	V 3.12	July 2009	Update Version

Introduction to SoftRater Server

Oracle Insurance Insbridge Rating and Underwriting SoftRater Server (IBSS) is an administrative tool used in conjunction with SoftRater for WebLogic, JBoss, or WebSphere. It allows you to:

- Configure the SoftRater for WebLogic engine
- Configure the SoftRater for JBoss engine
- Configure the SoftRater for WebSphere engine
- Rate test files
- Execute a SoftData request

Variations between, WebLogic, JBoss, and WebSphere

There are a few differences between WebLogic, JBoss, and WebSphere on IBSS:

- The ports are different.
 - WebLogic uses port 7001
 - JBoss uses port 8080
 - WebSphere uses port 9080
- WebLogic and JBoss do not use the Edit SOAP Deployment Configuration Settings. It is not required.
- The WebLogic and JBoss Get SoftRater WSDL Files option will have a smaller number of files.

These differences will be detailed throughout this guide.

WebSphere

For a WebSphere environment, IBSS can be accessed by going to `http://<yourserver>:9080/IBSS`, where <yourserver> is the server the IBSS is installed on.

If you do not know this information, contact your system administrator.

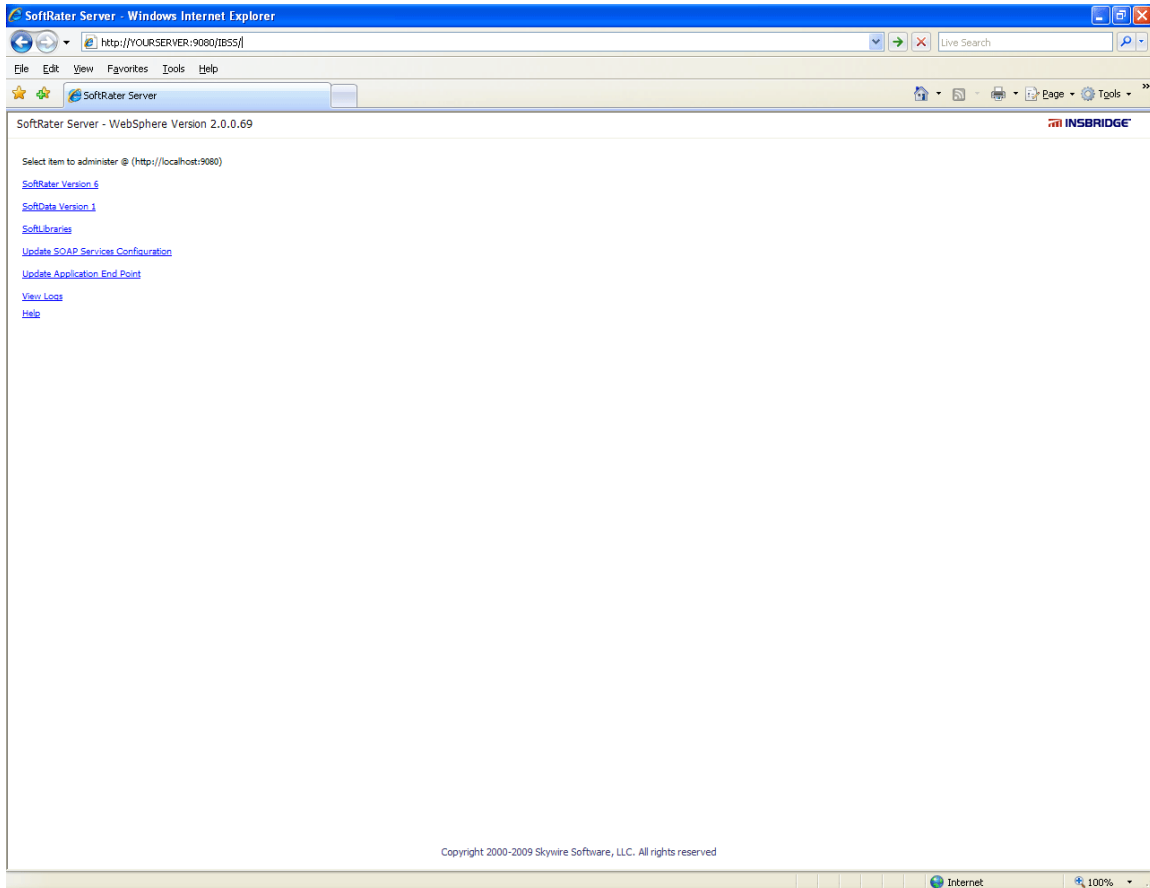


Figure 1 SoftRater Server for WebSphere

JBoss

For a JBoss environment, IBSS can be accessed by going to `http://<yourserver>:8080/IBSS`, where <yourserver> is the server the IBSS is installed on.

If you do not know this information, contact your system administrator.

NOTE

The top of the screen will list the platform you are on and the version of IBSS.

WebLogic

For a WebLogic environment, IBSS can be accessed by going to `http://<yourserver>:7001/IBSS`, where <yourserver> is the server the IBSS is installed on.

If you do not know this information, contact your system administrator.

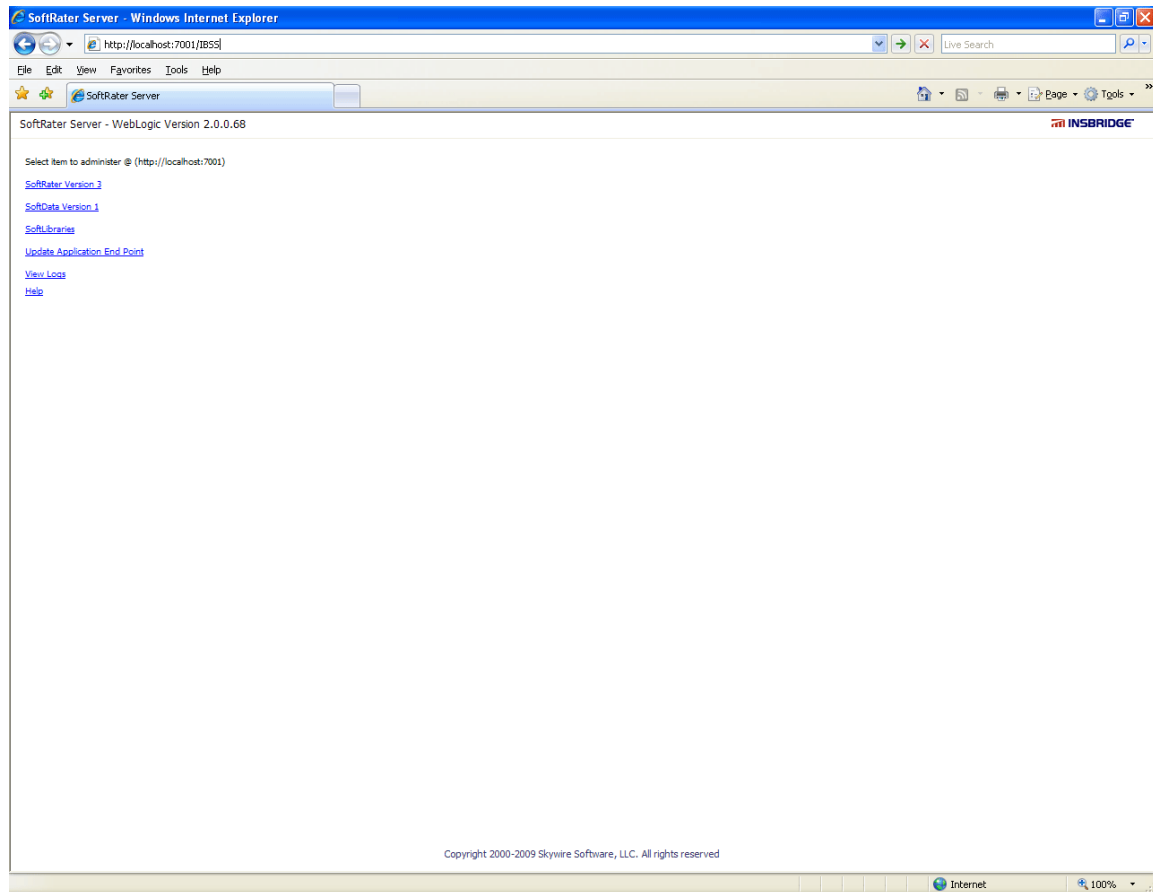


Figure 2 SoftRater Server for WebLogic

For more information, see the following topics:

- Introduction to the SoftRater Page 11
- Introduction to the SoftData Page 25
- Introduction to SoftLibraries Page 30
- Update Application End Point Page Page 40
- Logs Page 41

NOTE

The top of the screen will list the platform you are on and the version of IBSS.

Introduction to the SoftRater Page

The SoftRater page is used to configure and test the SoftRater engine. The SoftRater page is accessed from the IBSS home page by selecting the SoftRater Version 3 link. The version shown will vary depending on which version of the SoftRater engine you have installed. This page operates the same way for either WebLogic, JBoss or WebSphere.



Figure 3 SoftRater Page

Using the menu tree in the left frame, you can choose any of the following:

- **Edit Options:** Sets logging options and the information returned in result XML files.
- **Environment Setup:** Configures rating environments.
- **Reset Environments:** Reloads the SoftRater configuration XML file.
- **Submit Insbridge (xml):** Tests an input file that is in the Insbridge.XML format.
- **Submit Custom (xml):** Tests an input file that is not in the Insbridge.XML format.
- **Program Cache:** Configures cache options and shows a listing of all the programs currently in the cache.
- **Get Version:** Returns the version of the SoftRater engine currently installed.

- **Get Config Path:** Returns the configuration path used by the SoftRater engine.
- **Get Sample Files:** Returns with Sample Files. Shows a listing of the WSDL files and allows you to view them.
- **Set SOAP (url) or Set WSDL (url):** Changes the default SOAP proxy URL.
- **Get SOAP (url) or Get WSDL (url):** Returns the default SOAP proxy URL.
- **Home:** Returns to the SoftRater Home page.

Edit Options

This section allows the user to set the information to be automatically logged and the statistical information to be returned in result XML files. To navigate to the **Edit Options** page, select the Edit Options link available from the menu tree on the SoftRater page.

* Edit Configuration Settings

Status:

Date Last Modified 06/23/2009 11:28:16 AM

DB Auto Release ☐

Auto Logging ☐ SQL ☐ XML ☐ Program Template

Show Time Stats ☒ Start ☒ Stop ☒ Running

Location Name

Help Server

Logs Dir

Figure 4 Edit Options

DB Auto Release

This option is used to signal the system to automatically release all data base connections at the earliest possible occurrence.

Auto Logging

Allows the user to select what information should be logged for each transaction. These options should typically be left unchecked, unless directed to check them by a member of the Oracle Insurance Support team.

SQL: The SQL script that was executed. If this option is not selected, this information will still be logged if an error occurs.

XML: The XML that was used. If this option is not selected, this information will still be logged if an error occurs.

Program Template: Provides an XML view of the entire program that was executed. This information is used to help Oracle Insurance determine why a program is not rating correctly.

NOTE

SoftLibrary logging is done on the SoftLibraries page.

Show Time Stats

Allows the user to choose if statistical information will be included in the return XML. Any combination of the options may be selected. The statistical information is returned in the <stats> node.

Start: Time stamp of when rating started. Returned in the <start_time> node.

Stop: Time stamp of when rating finished. Returned in the <stop_time> node.

Running: The **Start Time** minus the **Stop Time**. The result is the length of time rating took, in milliseconds (1000 milliseconds = 1 second). Returned in the <running_time> node.

NOTE

Start Time and **Stop Time** are shown in microseconds (10^{-3} seconds), while the **Running Time** is shown in milliseconds (10^{-2} seconds).

Location Name

Labels the configured site. Will be returned as part of the XML response content for each transaction to show the originating site for the result.

Help Server

Help files are installed with IBFA. Enter the name of the server where IBFA was installed. This will allow users to access the help files when they click on the help link. Leaving this field blank will result in an error when users click the Help link on the home page.

Logs Dir

Physical directory for storage of the error logs. Enter in the location where you want the log files to be stored. The log directory defaults to the root where the application was installed. This may not be displayed. The logs written to the **Logs Dir** are:

insbridge.net.SoftRater.general.log: General status message log.

insbridge.net.SoftRater.xml.log: Operational XML that triggered some exception processing.

insbridge.net.SoftRater.sql.log: SQL text that has generated some exception processing.

insbridge.net.SoftServices.lib.log: SoftRater library that has generated some exception processing.

Insbridge.net.softrater.cache.log: The cache log for purges.

When you are finished making changes, click **Save**. To cancel changes that have not been saved, click **Exit**.

Environment Setup

The **Environment Setup** section allows a user to configure rating environments. An environment is a pointer to a location where SoftRater Packages (SRP's) are stored and loaded. There is no limit to the number of environments you may have. To navigate to the Environment Setup page, select the Environment Setup link available from the menu tree on the SoftRater page. Required fields will be marked with an asterisk (*).

- **Creating/Editing an Environment**
- **Testing an Environment**
- **Deleting an Environment**

* Environment Setup

Status:

SELECT ENVIRONMENT		>> Add New Environment <<		Go!
Environment Name*	ara775@db1	Company Id*	775	
Database Server*	db1	Port*		Query Block
Database Name*	IBRM_ARA	Schema name**		
Database User Id*	SRRA			
Database Password*			
Provider Type	MS SQL Server			
Database Type	RateManager			
Data Dir				

* Fields are required.

** Fields required for an Oracle DB connection.

Save Exit

Test Connection! Delete!

Figure 5 Environment Setup

To Create/Edit an Environment

1. To create a new environment, use the drop down text box next to **SELECT ENVIRONMENT** and select **>> Add New Environment <<**. If you are editing an existing environment, select the name from the drop down text box. If the page does not automatically refresh, click **Go!**.

2. When the page refreshes, enter the following information:

Environment Name: A name for the environment.

Database Server: The name of the server that houses the database packages are loaded to.

Database Name: The name of the database that packages are loaded to.

Database User Id: The username to access the database.

Database Password: The password for the username entered.

Provider Type: The provider of the database. Options are **DB2**, **DB2(AS400)**, **ORACLE** and **MS SQL SERVER**.

Database Type: The type of database being accessed. Options are **SoftRater** and **RateManager**.

Data Dir: The location of the SoftRater Packages (SRP's).

Company Id: Your Company's subscriber ID.

Port: Listening port to the target Database Management System.

Query Block: (Optional) For certain Database Management Systems (DBMS), system batch query optimization is required for performance and/or because of limits on/in the system. This value will control the maximum number of batch query operations that can be submitted to the target DBMS in any one transaction. It is known that for certain DB2 platform versions a value of 31 is required because of a hard software limit.

Schema Name: The schema name for the database.

3. When you are finished entering information, click **Save**. The environment will be saved and the **Status** field will update.
4. Before you can use the new or edited environment for rating, you will need to reload the configuration XML file. This is done by resetting the environments.

To Test an Environment

1. Use the drop down text box next to **SELECT ENVIRONMENT** and select the environment you wish to test. If you are testing a new environment, be sure to save it before testing. If the page does not automatically refresh, click **Go!**.
2. When the page refreshes, click **Test Connection!**.
3. You will be asked to confirm testing the environment.

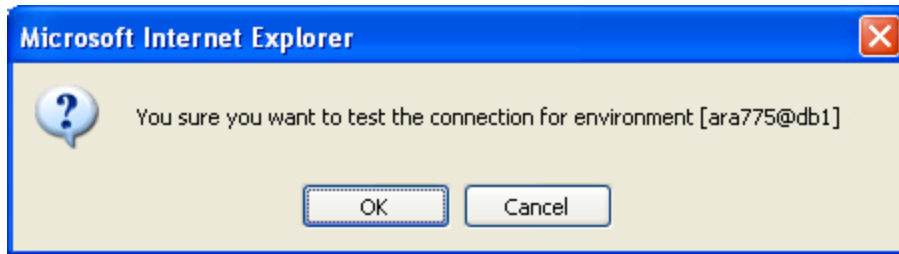


Figure 6 Testing an Environment

4. Click **OK** to test the environment or **Cancel** if you do not wish to test the environment.
5. The **Status** field will update with the results of the test.

To Delete an Environment

1. Use the drop down text box next to **SELECT ENVIRONMENT** to select the environment you wish to delete. If the page does not automatically refresh, click **Go!**.
2. When the page refreshes, click **Delete**.
3. You will be asked to confirm deleting the environment.

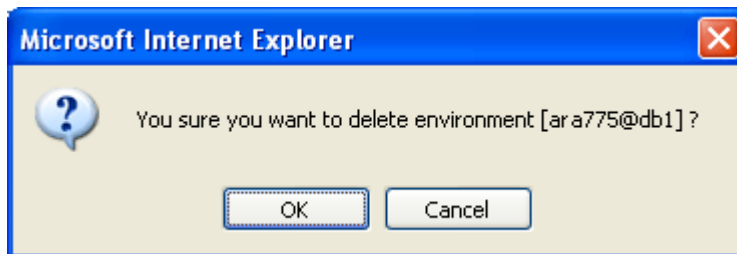


Figure 7 Deleting an Environment

4. Click **OK** to delete the environment or **Cancel** if you do not wish to delete the environment.
5. The environment will be deleted and the **Status** field will update.
6. The deleted environment will still be available for rating against until the configuration XML file is reloaded. This is done by resetting the environments.

Reset Environments

To navigate to the **Reset Environments** page, select the Reset Environments link available from the menu tree on the SoftRater page. In order to activate changes to an environment, the SoftRater configuration XML file must be reloaded. To do so, click **Execute**. The screen will refresh and the environment will be reset. Click **Exit** to return to the SoftRater Administrator menu.

* Reset Environment Configuration

Select this method to re-load the SoftRater configuration xml file making any changes to the environment settings now active. NOTE: If program caching is enabled the ALL items currently in the cache will be purged.

Note: Transactions currently in process could be made invalid.

Execute

Exit

Figure 8 Resetting the Environment

NOTE

All information in the cache will be purged and any transactions currently processing could be made invalid.

Submit Insbridge XML

To navigate to the **Submit Insbridge XML** page, select the Submit Insbridge (XML) link available from the menu tree on the SoftRater page. This page allows you to rate an input file that is in the Insbridge.XML format. Select a file to rate, select the environment to rate against and select any optional rate operators to be used during rating.

* Submit (xml)

This page will test InsBridge.XML against loaded SoftRater Packages. You will need to provide an **Input File** or paste a **XML** text to execute. Please enter the required information below.

Input XML	<input type="text"/>	<input type="button" value="Browse..."/>
	<div></div>	
Environment	<input type="text" value="None"/>	<input type="checkbox"/> Indicates the default environment
Add Root	<input type="text" value="True"/>	Add the root node to the return result document?
Inputs	<input type="text" value="False"/>	Return the input xml used in the request in result document?
Heading	<input type="text" value="True"/>	Add the program description information to the results?
Result Desc	<input type="text" value="True"/>	Add result mapping item descriptions to the values in result items?
Empty Results	<input type="text" value="True"/>	Include result items that are empty to the results?
Debug output	<input type="text" value="False"/>	Execute with a debug record of the transaction(s).

Execute Reset Exit

Figure 9 Submitting an Insbridge XML

To Rate a File in the Insbridge.XML Format

1. Browse for an XML file to rate or copy and paste an XML file into the large text box.
2. Select the options to be used while rating the file. For more information on each of these items, see the IBFA topic Optional Rate Operators.

Environment: The name of the environment to rate against.

Add Root: Select **True** to have the <ibdoc> root node appended to the beginning of the result file. If you are rating a batch file, the root node is needed in order for the resulting file to be valid XML.

Inputs: Select **True** to have the input XML file returned in the result file.

Heading: Select **True** to have the company_nm, program_nm and version_nm attributes returned in the result file.

Result Desc: Select **True** to have the description (d attribute) returned for each result item.

Empty Results: Select **True** to have all results returned, even those without a value.

Debug Output: Select **True** to return the debug information in the result XML.

3. When you are ready to rate the file, click **Execute**.
4. The file will be rated and the results will be shown in the text area at the bottom of the page.

Click **Exit** to return to the SoftRater Administrator menu.

Submit Custom XML

To navigate to the **Submit Custom XML** page, select the Submit Custom (XML) link available from the menu tree on the SoftRater page. This page allows you to rate an input file that is not in the Insbridge.XML format. In order to do so, a stylesheet must exist for the program being rated. For more information on creating the stylesheet, see the RateManager topic Introduction to Custom Input and Output Mapping.

*** Submit Custom (xml)**

This page will test Custom.XML against loaded SoftRater Packages. You will need to provide an **Input File** or paste a **XML** text to execute. Please select the required information below.

Environment	<input type="text" value="None"/>	
Line of Business	<input type="text"/>	<input type="text" value="Add <IBDOC> Root Node"/>
Company Id	<input type="text"/>	<input type="text" value="No Inputs Added"/>
Program Id	<input type="text"/>	<input type="text" value="Add Program Name"/>
Program Version	<input type="text"/>	<input type="text" value="Add Result Desc"/>
Result Definition	<input type="text"/>	<input type="text" value="Add Empty Results"/>
Input Mapping?	<input type="text" value="None"/>	<input type="text" value="No Debug"/>
Output Mapping?	<input type="text" value="None"/>	<input type="text" value="No Result Encoding"/>
Input XML	<input type="text"/>	<input type="text" value="Run w/ Cache"/>

Style Name:

Style Name:

Figure 10 Submitting a Custom XML

To Rate a Custom XML File

1. Select the environment to rate against and the program to rate.

Environment: The name of the environment to rate against.

Line of Business: The number for the line of business you are rating. For example, if you are rating a file for the fire line of business, then enter **5**.

Company Id: Your Company's subscriber ID.

Program Id: The program ID for the program you are rating.

Program Version: The program version you are rating.

Result Definition: The result group to be used for the output. For more information, see the Insbridge SoftRater topic **SoftRater Switches**.

2. Select the stylesheet to be used to convert the input XML file. You can also select a stylesheet to be used to convert the output XML.

Input Mapping: The mapping type to be used to convert the input XML.

- **None:** No mapping will be used.
- **Global:** A global mapping will be used.
- **Program:** A program version specific mapping will be used.
- **Custom:** A custom mapping will be used.

Style Name: The name (if any) of the input mapping to use.

Output Mapping: The mapping type to be used to convert the output XML.

- **None:** No mapping will be used.
- **Global:** A global mapping will be used.
- **Program:** A program version specific mapping will be used.
- **Custom:** A custom mapping will be used.

Style Name: The name (if any) of the output mapping to use.

3. Select the Input XML. Browse for an XML file to rate or copy and paste an XML file into the large text box.
4. Select the options to be used while rating the file. For more information on each of these items, see the IBFA topic **Optional Rate Operators**.

Root Node: Select **Add <IBDOC> Root Node** to have the <ibdoc> root node appended to the beginning of the result file. If you are rating a batch file, the root node is needed in order for the resulting file to be valid XML. To not have the root node appended, select **No Root Added**.

Inputs: Select **Add Inputs** to have the input XML file returned in the result file. Select **No Inputs Added** to omit this information.

Program Name: Select **Add Program Name** to have the company_nm, program_nm and version_nm attributes returned in the result file. Select **No Program Name** to omit this information.


Result Desc: Select **Add Result Desc** to have the description (d attribute) returned for each result item. To omit this attribute, select **No Result Desc**.

Empty Results: Select **Add Empty Results** to have all results returned, even those without a value. Select **No Empty Results** to omit empty results.

Debug Output: Select **Debug** to return the debug information in the result XML. Select **No Debug** to omit this information.

Result Encoding: Select **Add Empty Results** to have all results returned, even those without a value. Select **No Empty Results** to omit empty results.

Cache: Select **Run w/ Cache** to allow the cache to be used while rating (if the cache is enabled). Select **Disable Cache** to rate the file without using the cache.

5. When you are ready to rate the file, click .
6. The file will be rated and the results will be shown in the text area at the bottom of the page.

Click  to return to the SoftRater Administrator menu.

Program Cache

To navigate to the **Program Cache** page, select the Program Cache link available from the menu tree on the SoftRater page. This page allows you to configure cache options, as well as view a listing of all the programs currently in the cache. You also can remove a specific program from the cache or clear the entire cache. For more information on the cache, see the SoftRater topic Introduction to SoftRater Caching.

* Program Cache Options

Status:

Date Last Modified 09/18/2008 01:32:04 PM

Enable Caching ☒





Program Listing:

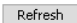
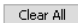
Remove!	Name	Env Source	Total Bytes	Total Hit Rows	Total Miss Rows	Package Creation Date	Cached Enabled Date
Empty							
							

Figure 11 Program Cache

Configuring Cache Options

These settings apply to all environments used by SoftRater engine. After making a change, be sure to click **Save**.

Enable Caching: A check indicates the cache is enabled. If you uncheck the box and then click **Save**. The cache will be disabled and all data (hits and misses) will be purged from the cache.

Click  to return to the SoftRater Administrator menu.

Removing a Program from the Cache

To remove a specific program from the cache, use the **Remove** hyperlink next to the desired program. All information for that program (in the specific environment) will be removed from the cache. If information exists in the cache for the same program in different environments, removing the information from one environment does not remove it from the other environments.

If no programs are available for removal, the Remove hyperlink will not be displayed.

Clearing the Cache

To remove all information from the cache, click . All information will be removed from the cache.

Get Version

To navigate to the **Get Version** page, select the Get Version link available from the menu tree on the SoftRater page.

This option returns the version of the SoftRater engine currently installed.

To use, click . The version will be returned in the text area at the bottom of the screen.

* Get version information

Select this method to get version of the SoftRater Engine currently in use.





Figure 12 Get Version

Click  to return to the SoftRater Administrator menu.

Get Config Path

To navigate to the **Get Config Path** page, select the Get Config Path link available from the menu tree on the SoftRater page.

This method is used to return the configuration path used by the SoftRater engine.

To use, click **Execute**. The configuration path will be returned in the text area at the bottom of the screen. The `insbridge.net.softraterconfig.xml` file must be in this location in order for the SoftRater engine to function.

* Get install config path

Select this method to get default configuration path being used by the SoftRater Engine. The `[insbridge.net.softraterconfig.xml]` configuration file must be in this directory for the engine to operate.



The screenshot shows a web interface for the 'Get install config path' method. It features a large text area with the word 'Execute' inside, and a button labeled 'Exit' at the bottom.

Figure 13 Get Config Path

Click **Exit** to return to the SoftRater Administrator menu.

Get Sample Files

To navigate to the **Get Sample Files** page, select the Get Sample Files link available from the menu tree on the SoftRater page. WebSphere will return different menu options than WebLogic or JBoss.

WebSphere

This page allows you to view the WSDL (Web Service Definition Language) files used by the SoftRater for WebSphere engine, as well as the `SoftRaterProxy.txt` file.

To use, click the button for the file you wish to view. The file will be returned in the text area at the bottom of the screen.

Available Files:

- **SoftRater.wsdl**
- **SoftRaterEJB.wsdl**
- **SoftRaterBinding.wsdl**
- **SoftRaterService.wsdl**
- **SoftRaterProxy.txt**

*** Get SoftRater WSDL Files**

Select the WSDL file to view.

SoftRater.wsdl

SoftRaterEJB.wsdl

SoftRaterBinding.wsdl

SoftRaterService.wsdl

SoftRaterProxy.txt

Exit

Figure 14 Get Sample Files WebSphere

WebLogic and JBoss

This page allows you to view the WSDL (Web Service Definition Language) files used by the SoftRater for WebLogic or SoftRater for JBoss engine, as well as the SoftRaterProxy.txt file.

To use, click the button for the file you wish to view. The file will be returned in the text area at the bottom of the screen.

Available Files:

- **SoftRaterWSService.wsdl**
- **SoftRaterProxy.txt**

*** Get SoftRater WSDL Files**

Select the WSDL file to view.

SoftRaterWSService.wsdl

SoftRaterProxy.txt

Exit

Figure 15 Get Sample Files WebLogic and JBoss

Click

Exit

 to return to the SoftRater Administrator menu.

Set SOAP URL or Set WSDL URL

Depending upon the database used, the options will be listed as **Set SOAP URL** or **Set WSDL URL**. Both will set the SOAP end point. Select the appropriate SOAP URL link from the menu tree on the SoftRater page. This method changes the default SOAP proxy URL. To use, enter the new URL in the text box and click **Execute**. The new URL will be set and a confirmation will be returned in the text area at the bottom of the screen.

* Set SOAP end point

Select this method to change the default SOAP proxy URL.

url:

Execute

Exit

Figure 16 Set SOAP URL

If you wish to determine the SOAP URL, use the Get SOAP URL method. Click **Exit** to return to the SoftRater Administrator menu.

Get SOAP URL or Get WSDL URL

Depending upon the database used, the options will be listed as **Get SOAP URL** or **Get WSDL URL**. Both will get the SOAP end point. Select the appropriate SOAP URL link available from the menu tree on the SoftRater page. This method returns the default SOAP proxy URL. To use, click **Execute**. The URL will be returned in the text area at the bottom of the screen.

* Get SOAP end point

Select this method to get the default SOAP proxy URL.

Execute

Exit

Figure 17 Get SOAP URL

If you wish to change the SOAP URL, use the Set SOAP URL method. Click **Exit** to return to the SoftRater Administrator menu.

Introduction to the SoftData Page

The SoftData page is used to test the SoftData engine. The SoftData page is accessed from the IBSS home page by selecting the SoftData Version 1 link. The version shown will vary depending on which version of the SoftData engine you have installed.



Figure 18 SoftData Page

Using the menu tree in the left frame, you can choose any of the following:

- **Submit (xml):** Tests a SoftData input file.
- **Get Version:** Returns the version of the SoftData engine currently installed.
- **Get Config Path:** Returns the configuration path used by the SoftData engine.
- **Get WSDL Files:** Shows a listing of the WSDL files and allows you to view them.
- **Set SOAP (url) or Set WSDL (url):** Changes the default SOAP proxy URL.
- **Get SOAP (url) or Get WSDL (url):** Returns the default SOAP proxy URL.
- **Home:** Returns to the home page.

Submit XML

To navigate to the **Submit XML** page, select the Submit (xml) link available from the menu tree on the SoftData page. This page allows you to test a SoftData request file that is in the InsbridgeDataRequest.XML format. You can select the file and environment to use for the request.

See the following topics for more information on SoftData:

- **InsbridgeDataRequest.XML:** The format where requests are sent in to SoftData.
- **InsbridgeDataResult.XML:** The format where results are received from SoftData.

* **Submit (xml)**

This page will test InsBridge Data Request.XML against loaded SoftRater Packages. You will need to provide an **Input File** or paste a **XML** text to execute. Please enter the required information below.

Input XML

Browse...

Environments: None [] Indicates the default environment

Execute Reset

Figure 19 Testing a SoftData Request File

To Test a File in the InsbridgeDataRequest.XML Format

1. Browse for an XML file to use or copy and paste an XML file into the large text box.
2. Select the environment to be used for the request.
3. When you are ready to test the file, click **Execute**.
4. The file will be rated and the results will be shown in the text area at the bottom of the page.

Get Version

To navigate to the **Get Version** page, select the Get Version link available from the menu tree on the SoftData page. This option returns the version of the SoftData engine currently installed.

To use, click **Execute**. The version will be returned in the text area at the bottom of the screen.

* **Get version information**

Select this method to get version of the SoftRater Engine currently in use.

Execute

Figure 20 Get Version

Get Config Path

To navigate to the **Get Config Path** page, select the Get Config Path link available from the menu tree on the SoftData page. This option is used to return the configuration path used by the SoftRater engine.

To use, click **Execute**. The configuration path will be returned in the text area at the bottom of the screen. The `insbridge.net.softraterconfig.xml` file must be in this location in order for the SoftRater engine to function.

* Get install config path

Select this method to get default configuration path being used by the SoftRater Engine. The `[insbridge.net.softraterconfig.xml]` configuration file must be in this directory for the engine to operate.

Execute

Figure 21 Get Config Path

Get WSDL Files

To navigate to the **Get WSDL Files** page, select the Get WSDL Files link available from the menu tree on the SoftData page. WebSphere will return different menu options than WebLogic or JBoss.

WebSphere

This page allows you to view the WSDL (Web Service Definition Language) files used by the SoftData WebSphere engine, as well as the `SoftDataProxy.txt` file.

To use, click the button for the file you wish to view. The file will be returned in the text area at the bottom of the screen.

Available Files:

- **SoftData.wsdl**
- **SoftDataEJB.wsdl**
- **SoftDataBinding.wsdl**
- **SoftDataService.wsdl**
- **SoftDataProxy.txt**

*** Get SoftRater WSDL Files**

Select the WSDL file to view.

Buttons for selecting WSDL files:

- SoftData.wsdl
- SoftDataEJB.wsdl
- SoftDataBinding.wsdl
- SoftDataService.wsdl
- SoftDataProxy.txt

Figure 22 Get WSDL Files WebSphere

WebLogic or JBoss

This page allows you to view the WSDL (Web Service Definition Language) files used by the SoftData WebLogic engine, as well as the SoftDataProxy.txt file.

To use, click the button for the file you wish to view. The file will be returned in the text area at the bottom of the screen.

Available Files:

- **SoftDataWSService.wsdl**
- **SoftDataProxy.txt**

*** Get SoftRater WSDL Files**

Select the WSDL file to view.

Buttons for selecting WSDL files:

- SoftDataWSService.wsdl
- SoftDataProxy.txt

Figure 23 Get WSDL Files WebLogic and JBoss

Set SOAP URL or Set WSDL URL

Depending upon the database used, the options will be listed as **Set SOAP URL** or **Set WSDL URL**. Both will set the SOAP end point. Select the appropriate SOAP URL link available from the menu tree on the SoftData page. This method changes the default SOAP proxy URL.

To use, enter the new URL in the text box and click **Execute**. The new URL will be set and a confirmation will be returned in the text area at the bottom of the screen.

* Set SOAP end point

Select this method to change the default SOAP proxy URL.

url:

Execute

Figure 24 Set SOAP URL

If you wish to determine the SOAP URL, use the Get SOAP URL method.

Get SOAP URL or Get WSDL URL

Depending upon the database used, the options will be listed as **Get SOAP URL** or **Get WSDL URL**. Both will get the SOAP end point. Select the appropriate SOAP URL link available from the menu tree on the SoftData page. This method returns the default SOAP proxy URL.

To use, click **Execute**. The URL will be returned in the text area at the bottom of the screen.

* Get SOAP end point

Select this method to get the default SOAP proxy URL.

Execute

Figure 25 Get SOAP URL

If you wish to change the SOAP URL, use the Set SOAP URL method.

Introduction to the SoftLibraries Page

The SoftLibraries page is used to administer the SoftLibraries. You can access the SoftLibraries page by clicking the SoftLibraries link on the IBSS main page.

The SoftLibraries section of IBSS allows an administrator to add, edit or delete external libraries. SoftLibraries can be created by developers and stored remotely. After being added into IBSS, these SoftLibraries can be added and activated in IBFA. Only active SoftLibraries can be used by callout programs in RateManager.

Please verify the version of IBFA you are using. In order to add a WebLogic SoftLibrary, you must be using IBFA for IBRU Version 3.9 or later. To add a JBoss SoftLibrary, you must be using IBFA for IBRU Version 3.11 or later.

In SoftLibraries you can:

- **Add Libraries**
- **Edit Libraries**
- **Delete Libraries**
- **View implementation requirements**
- **Reset configurations**

SoftLibraries are an advanced topic. This chapter will define the screen features and the functionality. Developing the code that is called will not be discussed here.

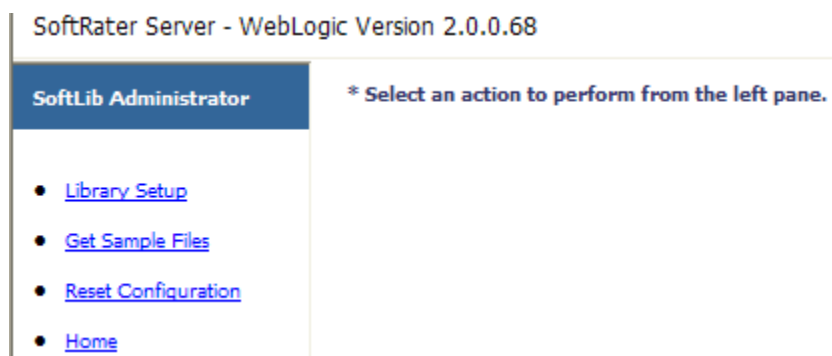


Figure 26 SoftLibraries Main Menu

The SoftLibraries page has four options:

- **Library Setup:** Allows for the adding, editing and deleting of SoftLibraries.
- **Get Sample Files:** Displays the require implementation configuration.
- **Reset Configuration:** Resets the configuration.
- **Home:** Returns you back to the IBSS main page.

Library Setup

Library setup is where you will manage Java SoftLibraries in IBSS.

* Library Add/Edit

Status:

Date Last Modified: 07/07/2009 12:37:18 PM

Admin Name

Class Name

Logging ☐

Status

Libraries Listing

Active	Edit	Admin Name	Class Name	Logging	Date Last Modified	Delete
Active	Edit	Lib	com.insbridge.samples.Library	On	05/02/2009 03:53:40 PM	Delete
Disabled	Edit	Lib 1	com.insbridge.samples.Library_1	Off	05/07/2009 06:38:14 PM	Delete
Disabled	Edit	Lib 2	com.insbridge.samples.Library_2	Off	05/07/2009 06:37:58 PM	Delete
Disabled	Edit	VM1	com.insbridge.samples.Library_6	Off	05/16/2009 11:00:53 AM	Delete
Active	Edit	Mary-1	Doc	Off	01/23/2009 12:08:28 PM	Delete

Figure 27 SoftLibraries Main Screen

Library Add/Edit Navigation

Admin Name: This is the name of the SoftLibrary as it is displayed in RateManager. It is also the name that will be displayed on the lower section of the SoftLibraries page. Admin names must be unique.

Class Name: This is the name of the actual SoftLibrary created by the developer from the program where it was created. This information can be obtained from the developer. Class names must be unique.

Logging: Check this box if you want logging for this program. Leave it blank for no logging. The default is for no logging take place.

Status: The status of the SoftLibrary. If active is selected, the SoftLibrary will be displayed to RateManager users. If disable is selected, the SoftLibrary will not will be displayed to users. The default status is disabled.

Buttons

There are three buttons located in the Library Add/Edit section.

– Click this button to save your work when you edit.

– Click this button to add a new library.

– Click this button to return to the SoftLibrary Administrator screen.

When editing an active SoftLibrary, two links will be displayed in the Library Add/Edit area. These links will not be displayed if the SoftLibrary selected for editing is disabled.

[Edit Arguments!](#) – Click this when you want to edit the arguments of the SoftLibrary.


[Test!](#) – Click this to test your SoftLibrary.

Libraries Listing Navigation

The same information gathered in the Library Add/Edit section will be displayed here plus the date of the last modification. You also will have options to edit or delete individual SoftLibraries.

 Refresh

– Click the Refresh button to refresh the SoftLibrary listing.

 Delete All

– Clicking Delete All will delete all SoftLibraries. Any SoftLibrary can be deleted at any time. Be aware that changes to a SoftLibrary here will affect any programs in RateManager that currently call this SoftLibrary without sending notice to users.

Adding a SoftLibrary

A SoftLibrary can be added at any time.

1. Enter in the **SoftLibrary** information. Admin Name and Class name are required.
2. Click **Save** to add your SoftLibrary. It will be displayed on the lower portion of the screen.

If there are any errors with the new SoftLibrary, a message will be displayed at the top of the screen explaining the conflict.

SoftLibraries entered in IBSS will not be displayed in RateManager until added and activated in IBFA. You will need to have the Admin Name, Class Name and Endpoint in order to add the SoftLibrary in IBFA.

Editing a SoftLibrary

Any SoftLibrary can be edited at any time. Be aware that changes to a SoftLibrary in IBSS may not be automatically carried over to IBFA. If you edit the Admin Name or Class Name, you will have to edit the same information in IBFA. You also could delete the SoftLibrary in IBFA and then re-add it. Be aware that changes to a SoftLibrary here will affect any programs in RateManager that currently call this SoftLibrary without sending notice to users.

1. In the Library Listing section, click the [Edit](#) link on the SoftLibrary you want to edit. The SoftLibrary information will be populated in the top of the screen.
2. Make your changes and click **Save** to save the SoftLibrary. At the top of the page, the status will reflect that your configuration has been updated.

* Library Add/Edit

Status:

Date Last Modified: 07/07/2009 12:37:18 PM

Admin Name:

Class Name:

Logging: ☒ [Edit Arguments!](#) [Test!](#)

Status:

Libraries Listing

Active	Edit	Admin Name	Class Name	Logging	Date Last Modified	Delete
Active	Edit	Lib	com.insbridge.samples.Library	On	05/02/2009 03:53:40 PM	Delete
Disabled	Edit	Lib 1	com.insbridge.samples.Library_1	Off	05/07/2009 06:38:14 PM	Delete
Disabled	Edit	Lib 2	com.insbridge.samples.Library_2	Off	05/07/2009 06:37:58 PM	Delete
Disabled	Edit	VM1	com.insbridge.samples.Library_6	Off	05/16/2009 11:00:53 AM	Delete
Active	Edit	Mary-1	Doc	Off	01/23/2009 12:08:28 PM	Delete

Figure 28 Editing a SoftLibrary

Deleting a SoftLibrary

Any SoftLibrary can be deleted at any time. Be aware that changes to a SoftLibrary here will affect any programs in RateManager that currently call this SoftLibrary without sending notice to users. SoftLibraries will also have to be deleted out of IBFA.

To delete a SoftLibrary, click the [Delete](#) link on the library you want to delete. A warning message will be displayed, click OK to remove the SoftLibrary. Click Cancel to return to the SoftLibrary screen.

Editing Arguments

When you edit a SoftLibrary, you will have the option to edit the SoftLibrary arguments.

To edit arguments, click the [Edit Arguments!](#) link. The lower portion of the screen will change to the current arguments.

* Library Add/Edit

Status:

Date Last Modified: 05/02/2008 03:53:40 PM

Admin Name

Class Name

Logging ☒

[Edit Arguments!](#)

[Test!](#)

Status

(Lib) Setup Values

Status:

Setup Values

----- Select Add -----
FACTOR

Name:

Value:

Figure 29 Editing Arguments

In this area you can

Delete All: Clicking this button will remove all arguments.

Delete: Highlight the argument you no longer need and click the delete button to remove this argument.

Update: After making edits, you can click the Update button to refresh the screen with the current arguments.

Add: To add a new argument, enter in a **Name** and a **Value**. Click the **Add** button. The argument will be displayed in the setup values box.

Done: Close the screen by clicking the Done button.

Testing an Argument

After you have edited a SoftLibrary, you can test it.

To test a SoftLibrary, click the [Test!](#) link. The lower portion of the screen will change.

*** Library Add/Edit**

Status:

Date Last Modified: 05/02/2008 03:53:40 PM

Admin Name

Class Name

Logging ☒ [Edit Arguments!](#) [Test!](#)

Status

*** Submit Test (xml)**

This page will test user defined XML messages against configured **SoftLibrarie**. You can select an **Input File** or just pasted your XML to execute.

Action

Sample-XML

Execution Time:

Figure 30 Testing a SoftLibrary

In this area you can:

Action: Select the action you want to take from the drop down menu.

Execute – Click this to execute the SoftLibrary.

GetRequestXML – The request XML will be displayed here. This will tell you what requests you are sending out. This is an information only screen.

GetResponseXML – The response XML will be displayed here. This will tell you exactly what you are getting back. This is an information only screen.

Ping – Will ping the server to verify server response.

GetLogXML – If logging is turned on, this screen will display logs.

AppendtoLogXML – Appends the logs.

GetHelpText – This is an information screen. If you want a quick view of the library, this screen contains the basic information.

GetArgs – Returns the arguments used in the SoftLibrary.

Sample-XML: You can search for sample XML to run. You can directly enter XML in the box underneath the.

Execute: After you have made your selection and entered any necessary XML, click the Execute! Button to execute.

Done: Close the screen by clicking the Done button.

Get Sample Files

The following is a sample of the abstract interface required by your class to be registered as a SoftLibrary.

```
abstract public interface ISoftService
{
    public String Execute(String XMLDoc) throws Exception;
    public String GetRequestXml() throws Exception;
    public String GetResponseXml() throws Exception;
    public void Initialise(String XMLDoc) throws Exception;
    public String Ping() throws Exception;
    public String GetLogXml() throws Exception;
    public void AppendToLogXml(String XMLDoc) throws Exception;
    public String GetHelpText() throws Exception;
    public String GetVersion() throws Exception;
}
```

Inbridge SoftLibrary Required Interface for Native JAVA

All that is required to create a JAVA class from this interface and register the new library for use in a RateManager program. SoftLibrary call-out registration is covered in the IBRU setup documentation. SoftLibrary definition is based on a stateless call-out paradigm.

- Execute() o Main entry point for business / rule transaction
- GetRequestXml() o Sample input XML document definition required by the library module
- GetResponseXml() o Sample output XML document definition return by the library module
- Initialise() o Setup arguments are provided to module just prior to the system calling the "Execute" method
Sample initialise xml :
<arguments>
<arg n="My value" v="123abc">
<arg n="URL" v="myserver.com">
</arguments>
- Ping() o Smoke test method in which library just verify it's properly setup
- GetLogXml() o Library returns a XML document definition of any optionally logged data
- AppendToLogXml() o Allow system to submit data for optionally logging by the library
- GetHelpText() o Display summary/help/version information displayed during registration

Figure 31 Get Sample Files

Clicking the [Get Sample Files](#) link pulls up a separate window that contains the implementation interfaces required by SoftLibraries. This window can be left open while you work.

Reset Config

After the first run, the environment is cached. To clear the cache, click the [Reset Configuration](#) link.

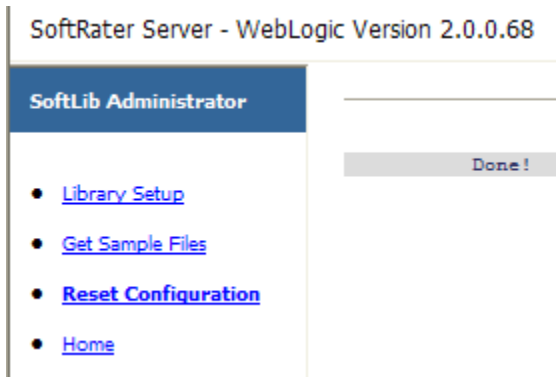


Figure 32 Reset Configuration

Update SOAP Services Configuration Page

The following settings do not need to be changed unless directed otherwise by an experienced WebSphere administrator. These settings should only change if using WebSphere ND or if the standard WebSphere installation configuration was modified to suit your environment.

SoftRater Server - WebSphere Version 2.0.0.69

Edit SOAP Deployment Configuration Settings

Status: Select the Web Services fields to update.

SoftRater EJB

JNDIName	<input type="text" value="ejb/com/insbridge/sofrater/SoftRaterHome"/>
ContextProviderURL	<input type="text" value="iiop://localhost:2809"/>
FullHomeInterfaceName	<input type="text" value="com.insbridge.sofrater.SoftRaterHome"/>
FullContextFactoryName	<input type="text" value="com.ibm.websphere.naming.WsnInitialContextFactory"/>

SoftData EJB

JNDIName	<input type="text" value="ejb/com/insbridge/softdata/SoftDataHome"/>
ContextProviderURL	<input type="text" value="iiop://localhost:2809"/>
FullHomeInterfaceName	<input type="text" value="com.insbridge.softdata.SoftDataHome"/>
FullContextFactoryName	<input type="text" value="com.ibm.websphere.naming.WsnInitialContextFactory"/>

SoftServices Gateway EJB

JNDIName	<input type="text" value="ejb/com/insbridge/softservices/SoftServicesGatewayHome"/>
ContextProviderURL	<input type="text" value="iiop://localhost:2809"/>
FullHomeInterfaceName	<input type="text" value="com.insbridge.softservices.SoftServicesGatewayHome"/>
FullContextFactoryName	<input type="text" value="com.ibm.websphere.naming.WsnInitialContextFactory"/>

<input type="button" value="Save"/>	<input type="button" value="Exit"/>
-------------------------------------	-------------------------------------

Figure 33 SOAP Services Configuration Page

WARNING

If these settings are different from the default WebSphere installation, then you must contact your WebSphere support personnel to provide these settings to you.

In a WebSphere ND/Load balanced environment, the **JNDIName** on each cluster node will need to be modified from the standard shown above, to a format similar to: cell/clusters/CLUSTERNAME/ejb/com/insbridge/Insbridge SoftRater/SoftRaterHome, where CLUSTERNAME is the name of your cluster.

A useful tool for discovering the JNDI Namespaces is available in the \$WSAS_HOME\bin folder called dumpNameSpace.sh or dumpNameSpace.bat. The utility can be run without any command line arguments to retrieve all the available JNDI name spaces.

This option will not be displayed for WebLogic or JBoss.

Update Application Endpoint Configuration Page

Configuration location for changing from the default SOAP endpoint to a custom setting as dictated by a custom configuration. No changes are required unless specified by an administrator.

WebSphere uses a different port than WebLogic and JBoss.

WebSphere

Edit SOAP Endpoint Configuration Setting

Status: Update the SOAP Endpoint.

SOAP Endpoint

Figure 34 SOAP Endpoint Configuration Page for WebSphere

WARNING

If these settings are different from the default WebSphere installation, then you must contact your WebSphere support personnel to provide these settings to you.

WebLogic and JBoss

The configuration method will be the same. WebLogic will use port 7001 and JBoss will use port 8080.

View Logs

The Log page shows a listing of the logs available. By default, information is only logged when an error occurs. This can be changed from the Insbridge SoftRater - Edit Options page. To view a log, click the hyperlink. The log will be returned in the text area at the bottom of the screen.

To clear a log, click the [\[Clear!\]](#) link at the end of the row. No warning message will be displayed. Logs are cleared immediately.

Select Log link to view

insbridge.net.softrater.general.log	General Status Messages	[Clear!]
insbridge.net.softrater.xml.log	Source XML from transactions logging or errors	[Clear!]
insbridge.net.softrater.sql.log	Source SQL from transactions logging or errors	[Clear!]
insbridge.net.softservices.lib.log	SoftRater Library base system log	[Clear!]
insbridge.net.softrater.cache.log	Application Cache logging	[Clear!]

Exit

Figure 35 Logs Page

The logs available are:

- **insbridge.net.softrater.general.log:** Shows general status messages.
- **insbridge.net.softrater.xml.log:** Shows the source XML for transactions.
- **insbridge.net.softrater.sql.log:** Shows the source SQL for transactions.
- **insbridge.net.softservices.lib.log:** Shows the SoftLibrary logs.
- **insbridge.net.softrater.cache.log:** Shows the cache log.

NOTE

Library logging is done on the SoftLibraries page. Logging is on a per program basis. To get library logs, you must go into each program and turn logging on.

If logging has not been turned on, no logs will be displaced. To turn on logging for general, SQL or XML, please go to the SoftRater Administration page.

If you need assistance with an Oracle Insurance Insbridge Rating and Underwriting System product, please log a Service Request using My Oracle Support at <http://metalink.oracle.com>.

Address any additional inquiries to:

Oracle Corporation
World Headquarters
500 Oracle Parkway
Redwood Shores, CA 94065
U.S.A.

Worldwide Inquiries:
Phone: +1.650.506.7000
Fax: +1.650.506.7200
oracle.com

Glossary

A	
Administrator:	The person designated by your company who has the authority to create and change groups, usernames, passwords and restrictions.
Algorithm:	A sequence of steps used to perform a calculation.
Assigned Driver:	A driver who has been assigned to a vehicle.
Assigned Vehicle:	A vehicle that has been assigned a driver.
C	
Calculated Variable:	Calculated Variables are used when a result cannot best be derived from simple data mapping in a table. For example, if age is not passed as an input, but is a criteria needed in determining other factors, you would use a Calculated Variable to calculate driver age from the inputs of effective date and driver date of birth. Calculated Variables look at every node (driver, vehicle, location, etc.) independently and create a result for each. Once a calculated variable is created, the result can be used in any other variable.
Callouts	A set of a single or multiple programs and/or SoftLibraries that allows users to call needed operations at a specific time from either inside the system or outside the system.
Category:	A user defined group of information that defines inputs, variables, algorithms and the overall structure of the program.
Criteria:	An input or variable used in a mapped variable to determine which value to return. Any input or variable can be used as a criteria.
D	
Data Type:	The type of data associated with a parameter. RateManager supports three (decimal, integer and string) data types for variables and inputs and a fourth (date) for inputs and result variables only.
Date:	A data type supported for inputs and result variables only. For more information, see Dates in the Contents section.
Decimal:	A data type supported for all types of variables and inputs. Examples of decimal values are 3.1415, 18 and 0.995.
Default Value:	Used by a mapped variable if no match is found based on the criteria.
Dependency:	When copying a variable, algorithm or driver assignment, any element that requires another element to be present or defined will be listed. All dependencies must be resolved.
Driver Assignment:	Driver assignment is an auto insurance specific method of assigning a particular driver to a particular vehicle on a policy, based on certain criteria. Criteria often differ on a carrier basis, and sometimes even on a program level.
Driver Assignment Scenario:	A driver assignment scenario is a list of instructions that define the main sequence of operations to properly define the driver assignment logic for a carrier. A scenario is based upon the same algorithm principle used throughout the RateManager software.

E	
Export:	Exports allow users to export all elements of a program from one database to another database or within the same database. Or to export data in tab-delimited form, from a RateManager table to an outside location.
F	
Flag:	A variable that holds a 1 for true and a 0 for false.
Flag Driver Algorithm:	An algorithm used by a Flag Driver Function to flag drivers based on certain criteria.
Flag Driver Function:	A built-in function used in the main driver assignment that defines the scope of the flagging operation. Most require an association with a predefined Flag Driver Algorithm.
Flag Vehicle Algorithm:	An algorithm used by a Flag Vehicle Function to flag vehicles based on certain criteria.
Flag Vehicle Function:	A built-in function used in the main driver assignment that defines the scope of the flagging operation. Most require an association with a predefined Flag Vehicle Algorithm.
G	
Global:	An input or variable that is available to all programs under a specific subline.
Global Input:	A value that is passed into the rating system.
Global Result:	A value that is passed out of the system after rating.
Group:	A set of users that have the same access rights.
I	
If:	A step type available for use in calculated variables and algorithms. For more information, see If in the contents section.
Import:	Import allows users to bring in programs from an outside location into RateManager. Or to import data in tab-delimited form, into a RateManager table.
Input:	A value that is passed into the rating system.
Integer:	A data type supported for all types of variables and inputs. Examples of integer values are 3, 1859865 and -47.
Interpolation:	An estimated value derived from two known values.
L	
Library:	The Library is where templates are stored and managed.
Linked Variables:	Two or more mapped variables that have been associated with one another because they use the same criteria.
Lock:	A lock will close all associated Variables, Algorithms, Driver Assignments, Sequencing and Result Mappings in a program version from deletions and edits.
M	
Mapped Variable:	A variable that uses other variables and inputs as criteria in determining the appropriate value. See Mapped Variables in the Contents section for more information.

Mask:	A feature that allows the customer to determine how data should be interpreted. See Masking in the Contents section for more information.
N	
Normal Rating Algorithm:	<p>The most common type of algorithm. Examples of what it can be used for are:</p> <ul style="list-style-type: none"> • Determine premiums • Calculate differences in limits being passed into the system vs. limits being rated by the system • Assign tiers
O	
Operator:	A built-in mathematical function used in calculations and comparisons.
P	
Package:	A small file that holds all the RateManager logic for a specific program and version.
Program:	A planned group of procedures executed in a specific order to return a rating. Programs in RateManager typically correspond to rate manuals. Programs can be either created by the users or imported.
Program Date Mask:	Specifies how SoftRater interprets dates being passed into an input file.
Program Folders:	A RateManager file management system that functions in much the same way as Microsoft Windows Explorer. This multi level setup allows for an unlimited number of program folders and subfolders to be placed underneath a subline.
R	
Rank Driver Algorithm:	An algorithm used by a Rank Driver Function to rate drivers based on certain criteria.
Rank Driver Function:	A built-in function used in the main driver assignment that defines the scope and sorting order of the ranking operation. Most require an association with a predefined Rank Driver Algorithm.
Rank Vehicle Algorithm:	An algorithm used by a Rank Vehicle Function to rate vehicles based on certain criteria.
Rank Vehicle Function:	A built-in function used in the main driver assignment that defines the scope and sorting order of the ranking operation. Most require an association with a predefined Rate Vehicle Algorithm.
Reconcile	A comparison feature that compares one program version against another version in the same program and generate a report of the differences.
Restrictions:	Limitations on viewing and editing pages and fields in the system. Restrictions are assigned and changed by the Administrator.
Result Mapping:	A defined set of results, inputs and variables displayed in the output file.
Revision:	A variable specific type of versioning. See Versioning in the Contents section for more information.
S	
Sequence:	The order in which algorithms run. See Sequencing in the Contents section for more information.

SoftLibrary:	A SoftLibrary is a specially developed program that performs a specific task. SoftLibraries may run their own code or call upon other systems to obtain information outside of RateManager, for example, obtaining a credit score
Source:	The source is the creator of a template and will also be the name of the new subline.
String:	A data type supported for all types of variables and inputs. Examples of string values are "2.718", "The quick brown fox jumps over the lazy dog." and "001".
Subline:	Sublines are classifications that fall in between lines of business and program folders. Sublines allow for the separation of programs by source.
T	
Tab-delimited:	A type of text file in which columns are separated by tabs. This is the required format for importing tables into RateManager.
Template:	Templates are exact copies of existing programs within a line of business that can be from within your own user group, any other user group within the company or even from an outside company.
U	
Unassigned Driver:	A driver who has not been assigned to a vehicle.
Unassigned Vehicle:	A vehicle that has not been assigned a driver.
Underwriting Algorithm:	A type of algorithm used to determine if a policy meets the requirements of the company.
Universal:	A collection of programs from all lines of business combined with result group mappings and assigned to execute in sequence that returns a single or multiple results.
V	
Variable:	A name used to represent a value that can change. See Variables in the Contents section for more information.
Version:	One of a sequence of copies of a program, each incorporating new modifications. See Versioning in the Contents section for more information.
W	
Wildcard:	An option available for mapped variables that tells RateManager that one or more rows ignore the value passed in for the criteria. See Variables in the Contents section for more information.
Workflow:	A workflow is a type of program that allows you to call multiple programs from different lines of business together under one universal program.
Working Category:	A classification used to define how elements should run. See Categories in the Contents section for more information.
X	
XML ID:	A number automatically assigned by RateManager to identify inputs and categories.

Index

<	
<stats> node	
IBSS	13

A

Accessing	
SoftData	25
SoftRater Page	11
Active	
Library Status	31
Add <IBDOC> Root Node	
IBSS	19
Add Empty Results	
IBSS	20
Add Inputs	
IBSS	19
Add New Environment	
IBSS	15
Add Program Name	
IBSS	19
Add Result Desc	
IBSS	20
Add Root	
Rating Options	18
Adding	
SoftLibraries	32
Admin Name	
SoftLibraries	31
Administrator	
Framework Security	30
Auto Logging	
Program Template	13
SoftRater Page	12
SQL	12
XML	12
Auto Release	
SoftRater Page	12

C

Cache	
Custom XML	20
Cache Options	
Clearing in IBSS	21
Configuring in IBSS	20, 21
Enable Caching	21
Removing a Program in IBSS	21

Changes	
SOAP proxy URL SoftRater Page	24
WebLogic Configuration	40
WebSphere Configuration	38, 40
Class Name	
SoftLibraries	31
Clearing	
Program from Cache in IBSS	21
Company ID	
Custom XML	19
Configuration	
WebLogic in SoftData	40
WebSphere in SoftData	38, 40
Configure	
Rating Environments	14
Configuring	
Cache Options in IBSS	20, 21
SoftLibraries	30
Creating	
Environment Setup	15
Custom	
Mapping	19
Custom XML	
Cache	20
Company ID	19
Debug Output	20
Empty Results	20
Environment	19
Inputs	19
Line of Business	19
Program ID	19
Program Name	19
Program Version	19
Rating	19
Result Definition	19
Result Desc	20
Result Encoding	20
Root Node	19
Stylesheet	19

D

Database Types	
Environment Setup	15
DB2 Platform	
Query Block Limits	15
Debug	
IBSS	20
Debug Output	
Custom XML	20
Rating Options	18

Definition	
SoftRater Server	6
Deleting	
Environment Setup	16
SoftLibraries	33
Differences	
Platforms	8
Disable Cache	
IBSS	20
dumpNameSpace.bat	
WebSphere Configuration	39
dumpNameSpace.sh	
WebSphere Configuration	39

E

Edit Options	
SoftRater Page	12
Editing	
Environment Setup	15
IBSS	12
SoftLibraries	32
SoftRater Page	12
Editing Arguments	
SoftLibraries	33
Edition Notice	2
Empty Results	
Custom XML	20
Rating Options	18
Enable Caching	
Cache Options in IBSS	21
Environment	
Custom XML	19
Rating Options	17
Environment Setup	
Creating	15
Database Types	15
Deleting	16
Editing	15
IBSS	14
Provider Types	15
Query Block	15
SoftRater Page	14
Testing	15
Error Logs	
IBSS	13

G

Get Config Path	
IBSS	22, 27
SoftData	27
SoftRater Page	22
Get SOAP URL	

SoftData	29
Get SOAP URL SoftRater Page	24
Get Version	
IBSS	21, 26
SoftData	26
SoftRater Page	21
Get Wsdl Files	
SoftRater Page	22
Get WSDL Files	
IBSS	22, 27
SoftData	27
SoftRater Page	27
GetHelpText	
SoftLibraries	36
Global	
Mapping	19

H

Heading	
Rating Options	18

I

IBSS	
Add <IBDOC> Root Node	19
Add Empty Results	20
Add Inputs	19
Add New Environment	15
Add Program Name	19
Add Result Desc	20
Debug	20
Disable Cache	20
Editing	12
Environment Setup	14
Error Logs	13
Get Config Path	22, 27
Get Version	21, 26
Get WSDL Files	22, 27
Labels	13
Log Page	41
Logging Information	12
Navigating	6
No Debug	20
No Empty Results	20
No Inputs Added	19
No Program Name	20
No Result Desc	20
No Root Added	19
Program Cache	20
Run w/ Cache	20
Set SOAP URL	24, 29
SoftRater Page	11
Statistical Information	13

Submit Custom XML	18
Submit Insbridge XML.....	17
Submit XML.....	25
Time Stamp.....	13
Implementation Interfaces	
Required.....	36
Inputs	
Custom XML	19
Rating Options	18
Insbridge SoftData	
SOAP Services Configuration Page	39
insbridge.net.SoftRater.general.log	13, 41
insbridge.net.SoftRater.sql.log	41
insbridge.net.SoftRater.xengine.sql.log.....	14
insbridge.net.SoftRater.xml.log	13, 41
insbridge.net.softraterconfig.xml.....	27
insbridge.net.softraterconfig.xml file	
Get Config Path	22
insbridge.net.SoftServices.lib.log	14, 41
Insbridge.XML Format	
Rating.....	17
Rating Options	17
InsbridgeDataRequest.XML	
SoftData	26
InsbridgeDataRequest.XML format	
Testing on SoftData	25, 26
InsbridgeDataResult.XML	
SoftData	26

J

JBoss	
Port.....	9, 10
JNDI Namespaces	
WebSphere Configuration.....	39

L

Labels	
IBSS	13
Library	
Implementation Interfaces.....	36
Line of Business	
Custom XML	19
Local	
Mapping	19
Location Name	
SoftRater Page.....	13
Log Page	
IBSS	41
Logging	
SoftLibraries	31
Logging Information	
IBSS	12

Logs Dir	
SoftRater Page.....	13

M

Mapping	
Custom	19
Global.....	19
Local.....	19
Menu Options	
SoftData	25
SoftRater Page.....	11

N

Navigating	
IBSS	6
SoftData	25
No Debug	
IBSS	20
No Empty Results	
IBSS	20
No Inputs Added	
IBSS	19
No Program Name	
IBSS	20
No Result Desc	
IBSS	20
No Root Added	
IBSS	19
Notational Conventions.....	7

O

Options	
Insbridge.XML Format Rating	17
Overview	
SoftData	25
SoftRater Page.....	11
SoftRater Server	8

P

Platforms	
Differences	8
Port	
JBoss.....	9, 10
WebLogic	9, 10
WebSphere	9
Program Cache	
IBSS	20
SoftRater Page.....	20
Program ID	

Custom XML	19
Program Name	
Custom XML	19
Program Template	
Auto Logging	13
Program Version	
Custom XML	19
Provider Types	
Environment Setup	15

Q

Query Block	
Environment Setup	15

R

Rating	
Custom XML	19
Insbridge.XML Format	17
Rating Options	
Add Root	18
Debug Output	18
Empty Results	18
Environment	17
Heading	18
Inputs	18
Result Desc	18
Reloading	
SoftRater Page Environment	16
Removing	
Program from Cache in IBSS	21
Required	
Implementation Interfaces	36
Reset Config	
SoftLibraries	37
Reset Environments	
IBSS	16
SoftRater Page	16
Result Definition	
Custom XML	19
Result Desc	
Custom XML	20
Rating Options	18
Result Encoding	
Custom XML	20
Root Node	
Custom XML	19
Run w/ Cache	
IBSS	20
Running	
Show Time Stats	13

S

SELECT ENVIRONMENT

IBSS	15
Set SOAP URL	
IBSS	24, 29
SoftData	29
SoftRater Page	24
Show Time Stats	
Running	13
SoftRater Page	13
Start	13
Stop	13
SOAP	
SoftData	29
SOAP proxy URL	
Changes Default SoftRater Page	24
Default SoftRater Page	24
SOAP Services Configuration Page	
Insbridge SoftData	39
SoftData	
Accessing	25
Get Config Path	27
Get SOAP URL	29
Get Version	26
Get WSDL Files	27
Menu Options	25
Overview	25
Set SOAP URL	29
Submit XML	25
Test Engine	25
SoftDataProxy.txt file	27, 28
SoftLibraries	
Adding	32
Admin Name	31
Class Name	31
Configuring	30
Deleting	33
Editing	32
Editing Arguments	33
GetHelpText	36
Logging	31
Reset Config	37
Status	31
Testing Arguments	35
SoftLibrary Logging	13
SoftRater	
Caching Options	21
Get Config Path	27
Get Version	21
SoftRater for JBoss	
Get WSDL Files	23
SoftRater for WebLogic	
Get WSDL Files	23
SoftRater for WebSphere	
Get WSDL Files	22

SoftRater Page	
Accessing.....	11
Auto Logging.....	12
Auto Release.....	12
Edit Options.....	12
Editing.....	12
Environment Setup.....	14
Get Config Path.....	22
Get SOAP URL.....	24
Get Version.....	21
Get WSDL Files.....	22, 27
IBSS.....	11
Location Name.....	13
Logs Dir.....	13
Menu Options.....	11
Overview.....	11
Program Cache.....	20
Reloading Environment.....	16
Reset Environment.....	16
Set SOAP URL.....	24
Show Time Stats.....	13
Submit Custom XML.....	18
Submit Insbridge XML.....	17
SoftRater Server	
Definition.....	6
Overview.....	8
SoftRaterProxy.txt file	
Get WSDL Files.....	22, 23, 27, 28
SQL	
Auto Logging.....	12
Start	
Show Time Stats.....	13
Statistical Information	
IBSS.....	13
Status	
SoftLibraries.....	31
Stop	
Show Time Stats.....	13
Stylesheet	
Custom XML.....	19
Submit Custom XML	
IBSS.....	18
SoftRater Page.....	18
Submit Insbridge XML	
IBSS.....	17

SoftRater Page.....	17
Submit XML	
IBSS.....	25
SoftData.....	25
System Requirements.....	6

T

Test	
SoftData Engine.....	25
Test Connection	
IBSS.....	15
Testing	
Environment Setup.....	15
InsbridgeDataRequest.XML format on	
SoftData.....	25, 26
Testing Arguments	
SoftLibraries.....	35
Time Stamp	
IBSS.....	13

W

Web Service Definition Language	
SoftData.....	27, 28
SoftRater Page.....	22, 23
WebLogic	
Changes to Configuration.....	40
Port.....	9, 10
WebSphere	
Changes to Configuration.....	38, 40
JNDI Namespaces.....	39
Port.....	9
WebSphere ND/Load Balanced	
Environment	
Configuration.....	39
WSDL.....	22, 23, 27, 28

X

XML	
Auto Logging.....	12