

# Oracle Insurance IBRU ESI Guide

Version 3.12

July 2009

*Oracle Insurance Insbridge Rating and Underwriting ESI Guide*

*Version 3.12*

*Part #E15001-01*

*Library #E15014-01*

*Formerly P01-767-01*

*July 2009*

Copyright © 2008, Oracle. All rights reserved.

*Primary Authors: Mary Elizabeth Wiger, Aidi Niu*

The Programs (which include both the software and documentation) contain proprietary information; they are provided under a license agreement containing restrictions on use and disclosure and are also protected by copyright, patent, and other intellectual and industrial property laws. Reverse engineering, disassembly, or decompilation of the Programs, except to the extent required to obtain interoperability with other independently created software or as specified by law, is prohibited.

The information contained in this document is subject to change without notice. If you find any problems in the documentation, please report them to us in writing. This document is not warranted to be error-free. Except as may be expressly permitted in your license agreement for these Programs, no part of these Programs may be reproduced or transmitted in any form or by any means, electronic or mechanical, for any purpose.

If the Programs are delivered to the United States Government or anyone licensing or using the Programs on behalf of the United States Government, the following notice is applicable:

**U.S. GOVERNMENT RIGHTS**

Programs, software, databases, and related documentation and technical data delivered to U.S. Government customers are "commercial computer software" or "commercial technical data" pursuant to the applicable Federal Acquisition Regulation and agency-specific supplemental regulations. As such, use, duplication, disclosure, modification, and adaptation of the Programs, including documentation and technical data, shall be subject to the licensing restrictions set forth in the applicable Oracle license agreement, and, to the extent applicable, the additional rights set forth in FAR 52.227-19, Commercial Computer Software--Restricted Rights (June 1987). Oracle USA, Inc., 500 Oracle Parkway, Redwood City, CA 94065.

The Programs are not intended for use in any nuclear, aviation, mass transit, medical, or other inherently dangerous applications. It shall be the licensee's responsibility to take all appropriate fail-safe, backup, redundancy and other measures to ensure the safe use of such applications if the Programs are used for such purposes, and we disclaim liability for any damages caused by such use of the Programs.

The Programs may provide links to Web sites and access to content, products, and services from third parties. Oracle is not responsible for the availability of, or any content provided on, third-party Web sites. You bear all risks associated with the use of such content. If you choose to purchase any products or services from a third party, the relationship is directly between you and the third party. Oracle is not responsible for: (a) the quality of third-party products or services; or (b) fulfilling any of the terms of the agreement with the third party, including delivery of products or services and warranty obligations related to purchased products or services. Oracle is not responsible for any loss or damage of any sort that you may incur from dealing with any third party.

Oracle, JD Edwards, and PeopleSoft are registered trademarks of Oracle Corporation and/or its affiliates. Other names may be trademarks of their respective owners.

# Contents

---

<b>PREFACE</b>	<b>5</b>
Audience	5
System Requirements	5
Additional Information	5
Notational Conventions	6
Manual History	6
<b>CHAPTER 1</b>	<b>7</b>
INTRODUCTION TO INSBRIDGE EXTENDED SERVICES INTERFACE	7
<b>CHAPTER 2</b>	<b>9</b>
BASE DOMAIN TYPES	9
ESI_Category	9
ESI_DataTypes	9
ESI_Environment	9
ESI_EnvironmentTypes	10
ESI_Exception	10
ESI_ExceptionLevel	10
ESI_FolderGroup	10
ESI_Input	11
ESI_LOB	11
ESI_Program	11
ESI_ProgramTypes	11
ESI_ProgramVersion	12
ESI_SRP	12
ESI_SRPSStatusTypes	12
ESI_SRPSummary	12
ESI_User	13
ESI_UserGroup	13
USE CASE SUMMARY	14
<b>CHAPTER 3</b>	<b>17</b>
RATEMANAGER INTERFACE	17
Environment Items – GetAvailableEnvironments, All Non-Secured	17
Environment Items – GetAvailableEnvironments, Selected	17
General – CreateLauchDefinition (Network Login)	18
General – CreateLauchDefinition (RateManager Login)	18
Global Items – CreateInput	18
Global Items – CreateCategory	18
Global Items – CreateCategory with Inputs	19
Global Items – CreateCategoriesFromXML	19
Global Items – GetCategoryXML	19
Global Items – GetInputsXML	19
Program Items – CopyProgramVersion	20
Program Items – CreateFolderGroup	20
Program Items – CreateLine	20
Program Items – CreateProgram	21
Program Items – CreateProgramVersion	21
Program Items – DeleteFolderGroup	21
Program Items – DeleteProgram	21
Program Items – GetAvailableFolderGroups	22

<i>Program Items – GetAvailableFolderGroupsXML</i> .....	22
<i>Program Items – UpdateFolderGroup</i> .....	22
<i>Program Items – UpdateLOB</i> .....	22
<i>Security Items – CreateUser</i> .....	23
<i>Security Items – GetAvailableUserGroups</i> .....	23
<i>Security Items – UpdateUser</i> .....	23
<i>SRP Items – CreateSRP</i> .....	23
<b>CHAPTER 4</b> .....	<b>24</b>
FRAMEWORK ADMINISTRATOR INTERFACE .....	24
<i>SRP Items – CopySRP</i> .....	24
<i>SRP Items – DeleteSRP</i> .....	24
<i>SRP Items – ExportSRP</i> .....	25
<i>SRP Items – GetSRPList, ESI Created Only</i> .....	25
<i>SRP Items – GetSRPList, Selected SRP Type</i> .....	25
<i>SRP Items – ImportSRP</i> .....	25
<i>SRP Items – LoadSRP</i> .....	26
<i>SRP Items – MoveSRP</i> .....	26
<i>SRP Items – SaveFile</i> .....	26
<i>SRP Items – UnloadSRP</i> .....	27
<b>CHAPTER 5</b> .....	<b>28</b>
EXCEPTION ERRORS .....	28
<b>CHAPTER 6</b> .....	<b>29</b>
ESI USER SETUP AND AUTHENTICATION .....	29
<i>Adding a User</i> .....	29
<b>CHAPTER 7</b> .....	<b>32</b>
ESI SYSTEM CONFIGURATION.....	32
<b>CHAPTER 8</b> .....	<b>33</b>
SUPPORT .....	33
<b>INDEX</b> .....	<b>34</b>

# Preface

---

Welcome to the *Oracle Insurance Insbridge Rating and Underwriting ESI Guide*. This guide describes how you can configure and use the Insbridge Extended Services Interface (ESI).

## Audience

---

This guide is intended for application developers, programmers and others tasked with configuring the ESI interface. Users should be familiar with Visual Studio.

## System Requirements

---

Oracle Insurance recommends the following system requirements for client workstations for optimal performance. Currently, Insbridge ESI only supports US English.

### *Insbridge ESI Clients:*

- Operating System – Windows 2000 Professional (with service pack 3 or later) or Window XP Professional (with service pack 1a or later)
- Microsoft .NET 2.0 and 3.5
- Microsoft Web Services Enhancements 3.0 for Microsoft .NET Framework

## Additional Information

---

For more information, see these Oracle Insurance resources:

- Oracle Insurance IBRU RateManager User Guide
- Oracle Insurance IBFA User Guide
- Oracle Insurance ESI\_Help.chm file

## Notational Conventions

---

This section explains the conventions used in this book:

- Menu selections are shown with arrows. For example, the command to select the **Print** choice from the **File** menu looks as follows:

Select **File**►**Print**

- File names, path names and actions to be taken are shown in **bold**.
- New or emphasized terms are shown in *italics*.
- `Monospace` type indicates code that appears on the screen or that you must enter.

## Manual History

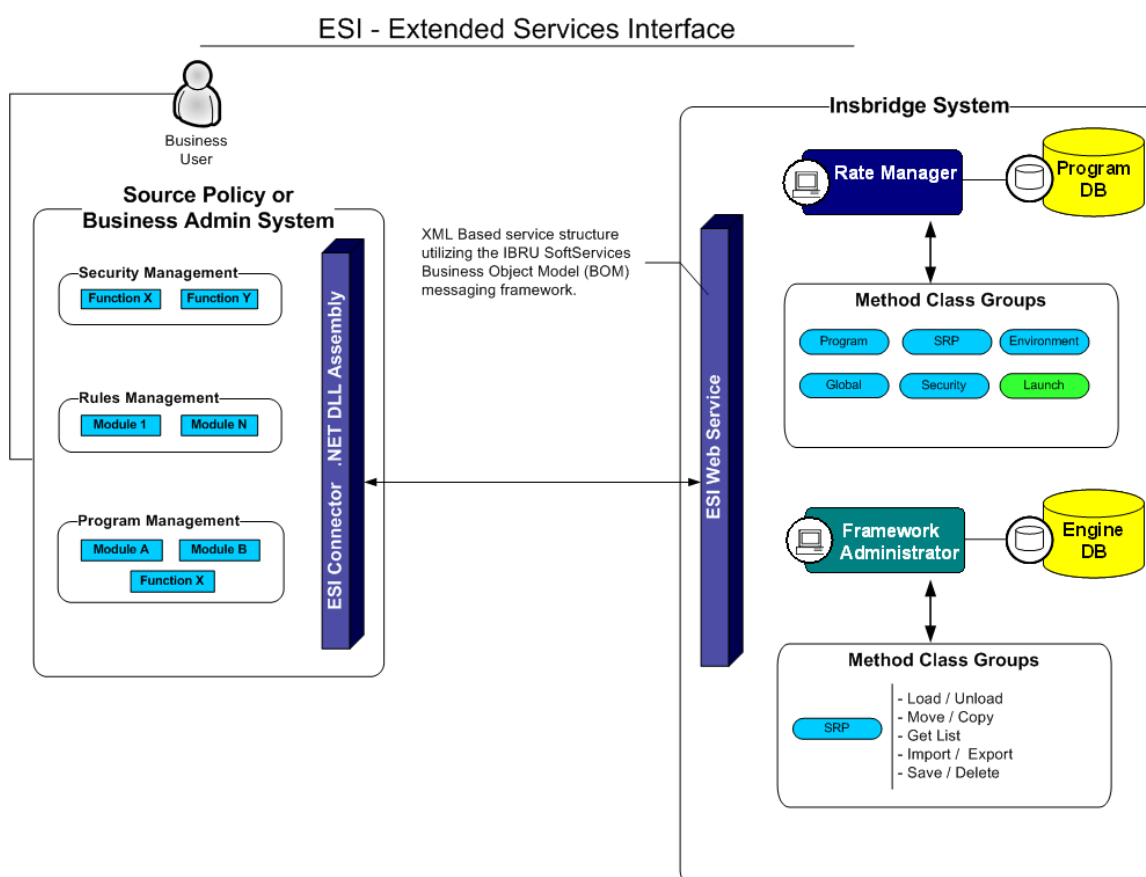
---

New editions incorporate any updates issued since the previous edition.

Edition	Publication Number	Product Version	Publication Date	Comment
1 <sup>st</sup> Edition	P01-767-01	V 3.11.01	December 2008	Initial release
2 <sup>nd</sup> Edition	P01-767-02	V 3.12.00	July 2009	Update Version

# Introduction to Insbridge Extended Services Interface

Oracle Insurance Insbridge Rating and Underwriting Extended Services Interface (ESI) is a library module designed to provide remote services to the Insbridge Rating and Underwriting (IBRU) business services without directly utilizing the system User Interfaces (UI).



ESI allows users to pass information between a user's source policy or business admin system and the RateManager system or the Insbridge Framework Administrator (IBFA) without using either the RateManager or IBFA UI. Information is passed through a custom built interface that resides on a source policy or business admin system on the client side to the ESI web service that resides on the IBRU side. The information is processed and results returned from the ESI web service back to the custom built interface into the client's source policy or business admin system.

ESI is designed to operate on Insbridge version 3.11 or higher and will connect with:

- Oracle Insurance IBRU RateManager Interface
- Oracle Insurance Framework Administrator Interface

For example, if you had a vendor Policy Administration system and wanted to provide integrated product management through your custom solution; ESI would allow you to model and use the workflow of the IBRU business services and functions but control all the user presentation aspects through your custom product interface.

### Rule and Functionality Highlights

- ESI is available on Insbridge Rating and Underwriting version 3.11 or higher.
- ESI will be loaded with the IBFA installation. To locate ESI, look under the Insbridge directory for the SDK/ESI file; [INSTALL\_DIR]\Insbridge\SDK\ESI. This file will contain two items:
  - Insbridge.Net.Fwk.ESI.dll
  - ESI\_Help.chm
- ESI entries are immediate. There is no lag time or system sync required.
- An ESI cannot be recalled or undone. If an ESI needs to be edited, for example a folder has an incorrect name; you must enter RateManager or IBFA and make the changes there.
- ESI works with the default subline in the folder of your choice for any line of business.
- Unless specifically stated as Optional, all Inputs are **Required**.

#### NOTE

For further details, please see the ESI\_Help.chm file.



---

## Base Domain Types

Base ESI domain types represent the business nouns with in the Insbridge system. These data structures represent the majority of the business payload.

### ESI\_Category

---

```
public class ESI_Category
{
    public int Id;
    public int Line;
    public string Name;
    public int ParentId;
}
```

### ESI\_DataTypes

---

```
public enum ESI_DataTypes
{
    dtInteger    = 0,
    dtString     = 1,
    dtFloat      = 2,
    dtDate       = 3
}
```

### ESI\_Environment

---

```
public class ESI_Environment
{
    public string Name;
    public ESI_EnvironmentTypes Type;
    public bool Secure;
    public bool Default;
}
```

## ESI\_EnvironmentTypes

---

```
public enum ESI_EnvironmentTypes
{
    ALL    = -1,
    DEV    = 0,
    QA     = 1,
    PROD   = 2
}
```

## ESI\_Exception

---

```
public class ESI_Exception : Exception
{
    public ESI_Exception Level;
    public string Message;
    public string Stack;
}
```

## ESI\_ExceptionLevel

---

```
public enum ESI_ExceptionLevel
{
    Critical    = 1,
    Warning     = 2,
    Information  = 3
}
```

## ESI\_FolderGroup

---

```
public class ESI_FolderGroup
{
    public int Id;
    public int Line;
    public string Name;
    public int ParentId;
}
```

## ESI\_Input

---

```
public class ESI_Input
{
    public int Id;
    public int Line;
    public string Name;
    public int Category;
    public ESI_DataTypes Type;
}
```

## ESI\_LOB

---

```
public class ESI_LOB
{
    public int Id;
    public string TypeDesc;
    public string DateMask;
    public int Active;
}
```

## ESI\_Program

---

```
public class ESI_Program
{
    public ESI_ProgramTypes Type;
    public string Name;
    public int Line;
    public int Id;
    public int FolderGroup;
    public string DateMask;
    public string Description;
    public string Note;
    public int StatId;
}
```

### NOTE

For Version 3.12, the public string NOTE will no longer be available due to a schema change. That attribute must be left blank.

## ESI\_ProgramTypes

---

```
public enum ESI_ProgramTypes
{
    ptProgram = 0,
    ptWorkFlow = 1
}
```

## ESI\_ProgramVersion

---

```
public class ESI_ProgramVersion
{
    public int Line;
    public int ParentProgramId;
    public int VersionNumber;
    public int FolderGroup;
    public string Name;
    public List<string> EffectiveDates;
}
```

## ESI\_SRP

---

```
public struct ESI_SRP
{
    public string FileName;
    public ESI_Environment Environment;
    public ESI_SRPSummary SummaryInfo;
    public ESI_SRPStatusTypes Status;
}
```

## ESI\_SRPStatusTypes

---

```
public enum ESI_SRPStatusTypes
{
    sstNotLoaded = 0,
    sstLoaded = 1,
    sstLoadedButNotOnDisk = 2
}
```

## ESI\_SRPSummary

---

```
public struct ESI_SRPSummary
{
    public int Line;
    public string LineName;
    public int Program;
    public string ProgramName;
    public int Version;
    public string CreateBy;
    public string CreateDate;
}
```

## ESI\_User

---

```
public class ESI_User
{
    public string Id;
    public string UserName;
    public string FirstName;
    public string LastName;
    public string Department;
    public string CompanyId;
    public string PhoneNumber;
    public string eMail;
    public bool PasswordExpires;
    public List<ESI_UserGroup> Groups;
}
```

## ESI\_UserGroup

---

```
public class ESI_UserGroup
{
    public string Id;
    public string Name;
    public string Description;
}
```

# Use Case Summary

The following table is a quick guide to the function available for ESI.

Business Use Case	Methods to Use	Result
<b>General – Open URL</b>		
Create Launch Definition – using a Network login	<u>General – CreateLaunchDefinition (Network Login)</u>	Method will return a URL for an existing program using a network login.
Create Launch Definition – using a RateManager login	<u>General – CreateLaunchDefinition (RateManager Login)</u>	Method will return a URL for an existing program using a RateManager login.
<b>Programs</b>		
Add	<u>Program Items – CreateProgram</u>	Create a new program.
Add New Version	<u>Program Items – CreateProgramVersion</u>	Creates a new version of an existing program.
Copy a Program Version	<u>Program Items – CopyProgramVersion</u>	Copies an existing Insbridge program version to a new specified version.
Delete	<u>Program Items – DeleteProgram</u>	Removes a program.
<b>Folder Groups</b>		
Add	<u>Program Items – CreateFolderGroup</u>	Creates a new folder.
Delete	<u>Program Items – DeleteFolderGroup</u>	Removes a folder.
List Folders	<u>Program Items – GetAvailableFolderGroups</u>	Returns a list of folders in an LOB.
List Folders	<u>Program Items – GetAvailableFolderGroupsXML</u>	Returns an XML string of all available folders in an LOB.
Update	<u>Program Items – UpdateFolderGroup</u>	Updates the name or location of a folder.

Line of Business		
Add	<u>Program Items – CreateLine</u>	Creates a new LOB.
Update	<u>Program Items – UpdateLOB</u>	Updates an LOB.
SRP – RateManager		
Add	<u>SRP Items – CreateSRP</u>	Creates an SRP and returns the SRP object.
Global Items		
Add	<u>Global Items – CreateInput</u>	Creates a new input.
Add	<u>Global Items – CreateCategory</u>	Creates a new category.
Add	<u>Global Items – CreateCategory with Inputs</u>	Creates a new category that includes inputs.
Add	<u>Global Items – CreateCategoriesFromXML</u>	Creates a new category using an XML string.
List Inputs	<u>Global Items – GetInputsXML</u>	Returns an XML string of all inputs in an LOB.
List Inputs	<u>Global Items – GetCategoryXML</u>	Returns an XML string of all categories in an LOB.
Security Items		
Add	<u>Security Items – CreateUser</u>	Creates a new user.
List	<u>Security Items – GetAvailableUserGroups</u>	Returns a list of all available user groups.
Update	<u>Security Items – UpdateUser</u>	Updates a user's information.
Environment Items		
List	<u>Environment Items – GetAvailableEnvironments Non-Secured</u>	Returns a list of all available non-secured environments.
List	<u>Environment Items – GetAvailableEnvironments, Selected</u>	Returns a list of all available environments within a selected environment type.

Business Use Case	Methods to Use	Result
<b>SRP– IBFA</b>		
Copy	<u>SRP Items – CopySRP</u>	Copies an SRP from the current environment into a selected environment.
Delete	<u>SRP Items – DeleteSRP</u>	Deletes an SRP from the disk.
Export	<u>SRP Items – ExportSRP</u>	Exports an SRP from IBFA and converts it to bytes.
Import	<u>SRP Items – ImportSRP</u>	Imports SRP bytes into an IBFA environment.
List	<u>SRP Items – GetSRPList, All</u>	Returns a list of all ESI created SRPs in a select environment.
List	<u>SRP Items – GetSRPList, Selected</u>	Returns a list of certain types of SRPs in a select environment.
Load	<u>SRP Items – LoadSRP</u>	Loads an SRP into an IBFA environment.
Move	<u>SRP Items – MoveSRP</u>	Moves an SRP from the current environment to the passed environment
Save	<u>SRP Items – SaveFile</u>	Saves the bytes you pass into a physical file.
Unload	<u>SRP Items – UnloadSRP</u>	Unloads an SRP from a selected environment.



## RateManager Interface

### Class Definition

```
public class RateManager
{
    public const string gAppID = "RateManager";

    public RateManager( string ApplicationTokenKey,
                       int SubscriberId,
                       string UserId,
                       string TargetInstance)

    public RateManager( string ApplicationTokenKey,
                       int SubscriberId,
                       string TargetInstance)
```

### Environment Items – GetAvailableEnvironments, All Non-Secured

#### **Business Functionality**

- Gets all the available non-secured environments.
- This ESI interfaces provides the ability for an external system to programmatically retrieve meta-data about all the available non-secured Environments in order for the system to programmatically invoke the other ESI deployment related API's.

#### **Inputs**

- No inputs

#### **Outputs**

- List of ESI\_Environment objects.

### Environment Items – GetAvailableEnvironments, Selected

#### **Business Functionality**

- Gets all the available environments for a particular environment type.
- This ESI interfaces provides the ability for an external system to programmatically retrieve meta-data about the available Environments in order for the system to programmatically invoke the other ESI deployment related API's and pass in the correct environment data object.

#### **Inputs**

- Environment Type
- Include Secured or Not

#### **Outputs**

- List of ESI\_Environment objects.

## General – CreateLaunchDefinition (Network Login)

---

### **Business Functionality**

- Method will return a URL for an existing program or folder. This method uses the Network login for authentication. Requires custom authentication setup in RateManager Security. See Authentication.

### **Inputs**

- Line ID
- Folder or Program ID
- URL Level

### **Outputs**

- Returns a URL string to launch a Program or Folder.

## General – CreateLaunchDefinition (RateManager Login)

---

### **Business Functionality**

- Method will return a URL for an existing program or folder. This method uses the standard RateManager login for authentication.

### **Inputs**

- Line ID
- Folder or Program ID
- URL Level

### **Outputs**

- Returns a URL string to launch a Program or Folder.

## Global Items – CreateInput

---

### **Business Functionality**

- Creates a new global level input in a particular LOB.

### **Inputs**

- ESI\_Input object

### **Outputs**

- Returns the ID of the newly created Input if succeeded or -1 if failed.

## Global Items – CreateCategory

---

### **Business Functionality**

- Creates a category in a particular LOB.

### **Inputs**

- ESI\_Category object

### **Outputs**

- Returns the ID of the newly created Category if succeeded or -1 if failed.

## Global Items – CreateCategory with Inputs

---

### **Business Functionality**

- Creates a category with inputs in a particular LOB.

### **Inputs**

- ESI\_Category object
- List of ESI\_Input objects

### **Outputs**

- No outputs.

## Global Items – CreateCategoriesFromXML

---

### **Business Functionality**

- Creates one or more categories in your default subline using an XML string.

### **Inputs**

- None

### **Outputs**

- Returns a List of ESI\_Category.

## Global Items – GetCategoryXML

---

### **Business Functionality**

- Gets an XML string of all the categories in a particular LOB.

### **Inputs**

- ESI\_Category object

### **Outputs**

- Return an XML string.

## Global Items – GetInputsXML

---

### **Business Functionality**

- Gets an XML string of all the inputs of a particular LOB.

### **Inputs**

- LineID

### **Outputs**

- Returns an XML string that includes all the inputs of that LOB.

## Program Items – CopyProgramVersion

---

### **Business Functionality**

- Copies an existing Insbridge program version to a new specified program version with the option to copy the definition only or copy the definition and all data.
  - **Copy Definitions Only:** This option will copy all elements of the program with the exception of the data contained in mapped variables.
  - **Copy Definitions & All Data:** This option will copy all elements of the program, including the data contained in mapped variables.

### **Inputs**

- New Program Version
- Source Program Version
- Copy Option

### **Outputs**

- Returns an ESI\_ProgramVersion object.

## Program Items – CreateFolderGroup

---

### **Business Functionality**

- Creates a new folder in a particular LOB.

### **Inputs**

- ESI\_FolderGroup object

### **Outputs**

- Returns an ESI\_FolderGroup object.

## Program Items – CreateLine

---

### **Business Functionality**

- Creates a new line of business. The line of business, if activated, will be displayed on the RateManager navigation bar immediately. In order for any users to use the new line, groups must have access privileges granted.

### **Inputs**

- ESI\_LOB object

### **Outputs**

- Returns the ID of the newly created Line if succeeded or -1 if failed.

## Program Items – CreateProgram

---

### **Business Functionality**

- Creates a new Insbridge Program in the folder of your choosing.

### **Inputs**

- ESI\_Program object

### **Outputs**

- ESI\_Program object.

### **NOTE**

For Version 3.12, the public string NOTE will no longer be available due to a schema change. That attribute must be left blank.

## Program Items – CreateProgramVersion

---

### **Business Functionality**

- Creates a new version of an existing program.

### **Inputs**

- ESI\_ProgramVersion object

### **Outputs**

- Returns an ESI\_ProgramVersion object.

## Program Items – DeleteFolderGroup

---

### **Business Functionality**

- Deletes an existing program folder. Make absolutely sure that the programs for the folder are no longer needed. Deleting a folder deletes all programs under that folder only. Subfolders and any programs in the subfolders will not be deleted but will now be unlinked.

### **Inputs**

- ESI\_FolderGroup object

### **Outputs**

- Returns True if succeeded or False if failed.

## Program Items – DeleteProgram

---

### **Business Functionality**

- Deletes an existing Insbridge Program. When a program is deleted, all data (variables, algorithms, sequencing, result groups and, if an auto program, driver assignment scenarios) and versions are deleted. Make sure this is the action you want to take. Locked programs cannot be deleted and will return a fail.

**Inputs**

- ESI\_Program object

**Outputs**

- Returns a pass/fail value. Pass = true and Fail = false.

## **Program Items – GetAvailableFolderGroups**

---

**Business Functionality**

- Gets a list of Folders of a particular LOB.

**Inputs**

- LineID

**Outputs**

- Returns a list of ESI\_FolderGroup objects.

## **Program Items – GetAvailableFolderGroupsXML**

---

**Business Functionality**

- Gets an XML string of available Folders of a particular LOB.

**Inputs**

- Line ID

**Outputs**

- Returns an XML string of available Folders of a specific LOB.

## **Program Items – UpdateFolderGroup**

---

**Business Functionality**

- Updates the name or parent of an existing program folder. When you change the parent of any folder, the folders underneath will be changed as well.

**Inputs**

- ESI\_FolderGroup object

**Outputs**

- Returns the updated Folder ID if succeeded or -1 if failed.

## **Program Items – UpdateLOB**

---

**Business Functionality**

- Updates an existing line of business: name, date mask or activation status.

**Inputs**

- ESI\_LOB object

**Outputs**

- Returns "True" if succeeded or "False" if failed.

## Security Items – CreateUser

---

### **Business Functionality**

- Creates a new User.

### **Inputs**

- ESI\_User object

### **Outputs**

- Returns True if succeeded or False if failed.

## Security Items – GetAvailableUserGroups

---

### **Business Functionality**

- Gets all the available user groups.

### **Inputs**

- No inputs

### **Outputs**

- Returns a list of ESI\_UserGroup objects.

## Security Items – UpdateUser

---

### **Business Functionality**

- Updates an existing User. Password Reset must be done inside RM.

### **Inputs**

- ESI\_User object

### **Outputs**

- Returns True if succeeded or False if failed.

## SRP Items – CreateSRP

---

### **Business Functionality**

- Creates a SoftRater Package (SRP) in a particular environment.
- ESI created SRP will have an identifier “API” in the filename and will show an icon on IBFA SRP list.

### **Inputs**

- ESI\_Program object
- Program Version
- ESI\_Environment object

### **Outputs**

- Returns the newly created ESI\_SRP object.

---

## Framework Administrator Interface

### Class Definition

```
public class FrameworkAdministrator
{
    public const string gAppID = "FrameworkAdministrator";

    public FrameworkAdministrator(
        string ApplicationTokenKey,
        int SubscriberId,
        string TargetInstance)
    {
    }
}
```

### SRP Items – CopySRP

---

#### **Business Functionality**

- Copies an SRP from the current environment to the selected environment. To determine the current environment, run the GetSRPList. This will return a list of ESI\_SRP's. Every ESI\_SRP has the environment and other information. CopySRP will get the current environment from the ESI\_SRP object that you pass in.

#### **Inputs**

- The environment the SRP to be copied to.
- The SRP to be copied.

#### **Outputs**

- True if succeeded or False if failed.

### SRP Items – DeleteSRP

---

#### **Business Functionality**

- Deletes an SRP from disk. To determine (or control) the environment that the SRP is deleted from, run the GetSRPList to get the ESI\_SRP's. Every ESI\_SRP has the environment and other information. This will tell you which environment the SRP is currently in.
- Once deleted, this package cannot be reloaded.

#### **Inputs**

- The SRP to be deleted

#### **Outputs**

- True if succeeded or False if failed



## SRP Items – ExportSRP

---

### **Business Functionality**

- Exports an SRP from an IBFA environment and converts it to bytes.
- You can use the bytes directly or save them to a physical file by using SaveFile() method.
- To use the SRP bytes, use a straight binary read into a byte array.  

```
FileStream fs = File.OpenRead(@"C:\TEMP\abc.srp");  
byte[] srpBytes = new byte[fs.Length];  
fs.Read(srpBytes, 0, srpBytes.Length);
```

### **Inputs**

- The environment the SRP is to be exported
- The SRP to be exported

### **Outputs**

- The bytes of the SRP

## SRP Items – GetSRPList, ESI Created Only

---

### **Business Functionality**

- Gets a list of all ESI created SRPs in a particular environment.

### **Inputs**

- The environment from where the SRPs are to be retrieved.

### **Outputs**

- A list of ESI\_SRP objects.

## SRP Items – GetSRPList, Selected SRP Type

---

### **Business Functionality**

- Gets a list of SRPs of certain type in a particular environment.

### **Inputs**

- The environment from where the SRPs are to be retrieved.
- SRP type: 0 = all SRPs; 1 = ESI created SRPs.

### **Outputs**

- A list of ESI\_SRP objects.

## SRP Items – ImportSRP

---

### **Business Functionality**

- Imports SRP bytes into an IBFA environment.

### **Inputs**

- The environment the SRP is to be imported into
- SRP bytes to be imported

### **Outputs**

- True if succeeded or False if failed

## SRP Items – LoadSRP

---

### **Business Functionality**

- Loads an SRP into an IBFA environment so that the rating algorithms can be executed against it.
- Loading a package takes the logic stored in the package and places it in the database so it can be executed.
- Packages should be able to be loaded within an ESI Environment.

### **Inputs**

- The environment the SRP is to be loaded in.
- The SRP to be loaded.

### **Outputs**

- True if succeeded or False if failed.

## SRP Items – MoveSRP

---

### **Business Functionality**

- Given an ESI\_SRP object as well as an ESI Environment, the API moves the SRP from the current environment to the passed-in environment.

### **Inputs**

- The environment the SRP is to be moved to.
- The SRP to be moved.

### **Outputs**

- True if succeeded or False if failed.

## SRP Items – SaveFile

---

### **Business Functionality**

- Saves the bytes you pass in to a physical file.
- It gives ASP.NET Machine Account ("ASPNET") full control of that file.

### **Inputs**

- The bytes to be saved
- The location and name the bytes are to be saved

### **Outputs**

- True if succeeded or False if failed

## SRP Items – UnloadSRP

---

### **Business Functionality**

- Unloads an SRP from a particular Environment. To determine (or control) the environment that the SRP is unloaded from, run the GetSRPList to get the ESI\_SRP's. Every ESI\_SRP has the environment and other information. This will tell you which environment the SRP is currently in.
- The package itself remains on disk until deleted. It is not necessary to unload a package before loading another package for the same program and version.
- If a package is loaded for a program and version that already has a package loaded, the old package will be unloaded before the new package is loaded.

### **Inputs**

- The SRP to be unloaded.

### **Outputs**

- True if succeed or False if failed.

---

## Exception Errors

### ESI\_ExceptionLevel

```
public enum ESI_ExceptionLevel
{
    Critical    = 1,
    Warning     = 2,
    Information  = 3
}
```

### ESI\_Exception

```
public class ESI_Exception : Exception
{
    public ESI_Exception Level;
    public string Message;
    public string Stack;
}
```

An ESI\_Exception will be thrown if any error happens during the API function call.

An error message will be stored in ESI\_Exception.Message and the stack trace information will be stored in ESI\_Exception.Stack.

There's an ESI\_Exception Level which gives you one of three levels:

- **Critical** – Any error that is not being handled by RateManager or IBFA (such as a NullPointerException) will be Critical level.
- **Warning** – Any error that is caught by RateManager or IBFA (such as missing parameter, wrong parameter type, etc) will be Warning level.
- **Information** – No error has occurred but some information needs to be returned.

## ESI User Setup and Authentication

There are two types of authentication in ESI RateManager Interface:

- **Regular login** – users will send down a valid RateManager username and ESI will log the user in with that.
- **Network login** – ESI will get your windows credentials and log you in with the same username and password as the user you login to windows

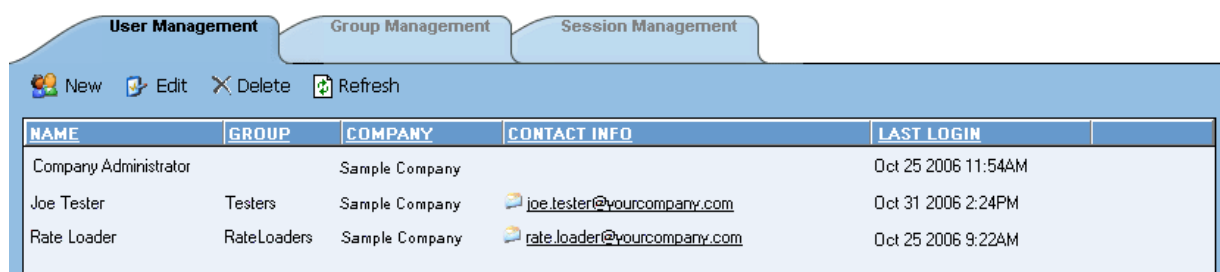
You will need to set up a network user account if you want to use windows integrated login in RateManager.

### Adding a User

New users can be added from the User Management screen. All new users will be assigned the default password, password. New users should log in as soon as possible and change their password.

#### To Add a New User

1. In RateManager, navigate to Administration>Security>**User Management**.



NAME	GROUP	COMPANY	CONTACT INFO	LAST LOGIN
Company Administrator		Sample Company		Oct 25 2006 11:54AM
Joe Tester	Testers	Sample Company	joe.testeri@yourcompany.com	Oct 31 2006 2:24PM
Rate Loader	RateLoaders	Sample Company	rate.loader@yourcompany.com	Oct 25 2006 9:22AM

Figure 1 Adding a New User

2. Click  to open the Add User screen.

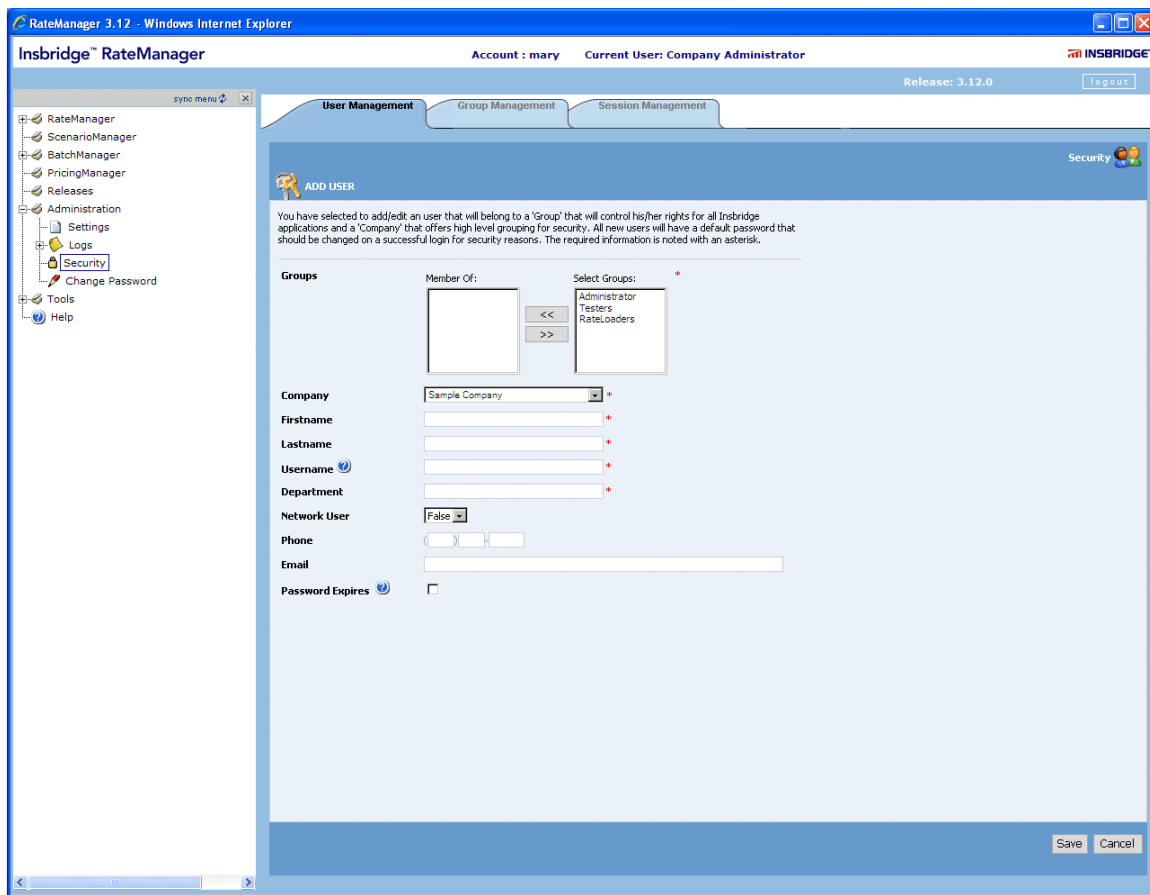

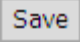


Figure 2 User Management Screen

3. Select the **Group(s)** the new user will belong to by selecting a group or groups from the Select Groups list and then clicking the  button.
4. Select the **Company** the user will belong to from the drop down listing.
5. Enter a **First** and **Last** name for the user in the appropriate text boxes.
6. Enter a **Username** for the new user. The username must be at least six, but fewer than twelve, alphanumeric characters and can include an underscore ( \_ ) or period ( . ).
7. Enter a **Department** for the user.
8. Select whether the new user is a **Network User** by selecting **True** or **False** from the drop down. If you select **True**, the user's credentials (username and password) will be validated using Windows Authentication Tokens. The username must match the network user ID. If you select **False**, the user must enter a valid username and password via the RateManager login screen.
9. Optionally, enter a **Phone Number** and **Email Address** for the new user.
10. If you wish for the user's password to expire, click the box next to **Password Expires**.

11. When you are finished, click . The user will be added to the system and the user list will be updated. The new user can now log in using the username you assigned them and the default password, **password**.
12. The user should change their password the first time they log in. See Changing Your Password in the RateManager User Guide for more information.

## ESI System Configuration

To use ESI's IBFA Framework functionality, you need to send down the API key when you do the ESI API call.

When IBFA is installed, a default API key will be generated and saved in IBFA. You can find it in *IBFA* ➤ *Insbridge* ➤ *Security* ➤ *External API Access*. You can disable ESI's IBFA functionality by setting it to "Disabled". For security purpose, you may want to change the key once in a while. To change the key, click on "Generate Key" and then click on "Update". Every key generated will be unique.

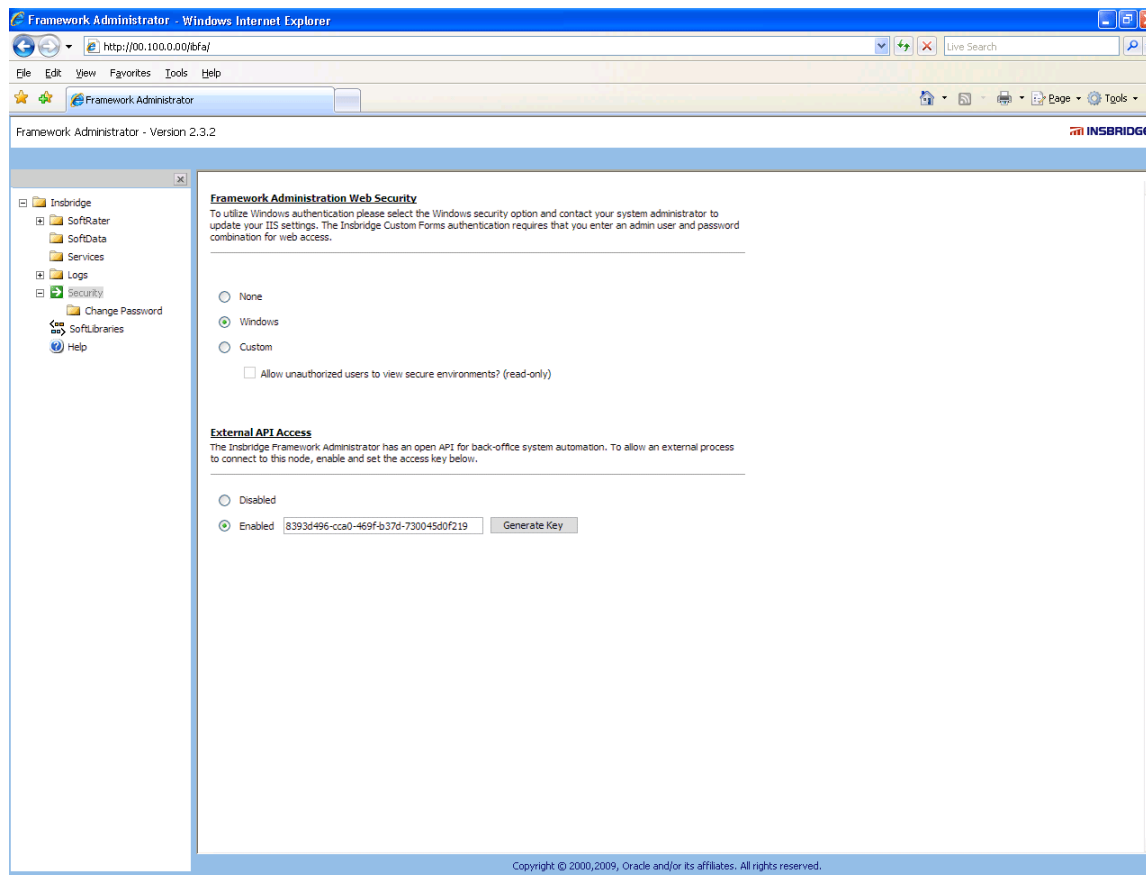


Figure 3 Allowing External API Access



If you need assistance with an Oracle Insurance Insbridge Rating and Underwriting System product, please log a Service Request using My Oracle Support at <http://metalink.oracle.com>.

**Address any additional inquiries to:**

**Oracle Corporation**  
World Headquarters  
500 Oracle Parkway  
Redwood Shores, CA 94065  
U.S.A.

Worldwide Inquiries:  
Phone: +1.650.506.7000  
Fax: +1.650.506.7200  
[oracle.com](http://oracle.com)

# Index

## A

Adding	
New User in User Management .....	29
API Key .....	32
Authentication	
ESI User .....	29

## B

Base ESI Domain Types .....	9
Business Use Case .....	14

## C

Category	
Create .....	18
Create from XML .....	19
Create with Inputs .....	19
Get, XML .....	19
Class Definition	
IBFA .....	24
RateManager Interface .....	17
Company	
Selecting for New User .....	30
Copy Definitions & All Data	
Copying Programs .....	20
Copy Definitions Only	
Copying Programs .....	20
Copy Program Version .....	20
Copy SRP .....	24
Create	
Network Login .....	29
Create Category .....	18
From XML .....	19
With Inputs .....	19
Create Folder Groups .....	20
Create Input .....	18
Create Launch Definition .....	18
Create LOB .....	20
Create New User .....	23
Create Program .....	21
Create Program Version .....	21
Create SRP .....	23
Critical	
ESI_Exception Level .....	28

## D

Default	
API Key .....	32
Delete Folder Groups .....	21
Delete Program .....	21
Delete SRP .....	24

## E

<i>Edition Notice</i> .....	2
Environments	
Get Available, Non-Secured .....	17
Get Available, Selected .....	17
ESI	
Overview .....	7
Rules .....	8
ESI Domain Types .....	9
ESI_Category .....	9
ESI_DataTypes .....	9
ESI_Environment .....	9
ESI_EnvironmentTypes .....	10
ESI_Exception .....	10, 28
ESI_Exception Level .....	28
ESI_ExceptionLevel .....	10, 28
ESI_FolderGroup .....	10
ESI_Input .....	11
ESI_LOB .....	11
ESI_Program .....	11
ESI_ProgramTypes .....	11
ESI_ProgramVersion .....	12
ESI_SRP .....	12
ESI_SRPStatusTypes .....	12
ESI_SRPSummary .....	12
ESI_User .....	13
ESI_UserGroup .....	13
Example	
Business Use Case .....	14
Export SRP .....	25

## F

Fail to Delete .....	21
False	
New Users .....	30
Folder	
Create .....	20
Delete .....	21
Get Available .....	22
Get Available, XML .....	22
Update .....	22

## G

Get Available	
Environments, Non-Secured .....	17
Environments, Selected .....	17
User Groups .....	23
Get Available Folder Groups .....	22
Get Available Folder Groups XML .....	22
Get Category XML .....	19
Get Inputs XML .....	19
Get SRP List	
All .....	25

Selected .....	25
Group	
Selecting for New User .....	30

## I

IBFA	
Class Definition .....	24
System Configuration .....	32
Import SRP .....	25
Information	
ESI_Exception Level .....	28
Inputs	
Create New .....	18
Get, XML .....	19

## L

Launch Definition .....	18
Load SRP .....	26
LOB	
Create .....	20
Update .....	22
Locked Program	
Fail to Delete .....	21

## M

Move SRP .....	26
----------------	----

## N

Network Login	
Create Launch Definition .....	18
ESI Authentication .....	29
Network User	
Selecting for New User .....	30
New User in User Management	
Adding .....	29
Notational Conventions .....	6

## O

Overview	
ESI .....	7

## P

Password	
Default .....	29
Program	
Copy .....	20
Copy Definitions & All Data .....	20
Copy Definitions Only .....	20
Create .....	21
Create New Version .....	21
Delete .....	21

## R

RateManager Login	
Create Launch Definition .....	18
ESI Authentication .....	29
Rules	
ESI .....	8
Username .....	30

## S

Save File SRP .....	26
SRP	
Copy .....	24
Create .....	23
Delete .....	24
Export .....	25
Get List, All .....	25
Get List, Selected .....	25
Import .....	25
Load .....	26
Move .....	26
Save File .....	26
Unload .....	27
System Configuration	
IBFA .....	32
System Requirements .....	5

## T

True	
New Users .....	30

## U

Unload SRP .....	27
Update Folder Groups .....	22
Update LOB .....	22
Update User .....	23
User	
Create New .....	23
Selecting Company for New .....	30
Selecting Group for New .....	30
Selecting Network User for New .....	30
Selecting Username for New .....	30
Update .....	23
Validation .....	30
User Groups	
Get Available .....	23
Username	
Rules .....	30
Selecting for New User .....	30

## W

Warning	
ESI_Exception Level .....	28