

Oracle Insurance SoftRater for WebLogic 9.2 Installation Guide

Version 3.12

July 2009

Oracle Insurance Insbridge Rating and Underwriting SoftRater for WebLogic 9.2 Installation Guide

Version 3.12

Part #E14994-01

Library #E15014-01

Formerly P01-762-05

July 2009

Copyright © 2008, Oracle. All rights reserved.

Primary Authors: Mary Elizabeth Wiger

The Programs (which include both the software and documentation) contain proprietary information; they are provided under a license agreement containing restrictions on use and disclosure and are also protected by copyright, patent, and other intellectual and industrial property laws. Reverse engineering, disassembly, or decompilation of the Programs, except to the extent required to obtain interoperability with other independently created software or as specified by law, is prohibited.

The information contained in this document is subject to change without notice. If you find any problems in the documentation, please report them to us in writing. This document is not warranted to be error-free. Except as may be expressly permitted in your license agreement for these Programs, no part of these Programs may be reproduced or transmitted in any form or by any means, electronic or mechanical, for any purpose.

If the Programs are delivered to the United States Government or anyone licensing or using the Programs on behalf of the United States Government, the following notice is applicable:

U.S. GOVERNMENT RIGHTS

Programs, software, databases, and related documentation and technical data delivered to U.S. Government customers are "commercial computer software" or "commercial technical data" pursuant to the applicable Federal Acquisition Regulation and agency-specific supplemental regulations. As such, use, duplication, disclosure, modification, and adaptation of the Programs, including documentation and technical data, shall be subject to the licensing restrictions set forth in the applicable Oracle license agreement, and, to the extent applicable, the additional rights set forth in FAR 52.227-19, Commercial Computer Software--Restricted Rights (June 1987). Oracle USA, Inc., 500 Oracle Parkway, Redwood City, CA 94065.

The Programs are not intended for use in any nuclear, aviation, mass transit, medical, or other inherently dangerous applications. It shall be the licensee's responsibility to take all appropriate fail-safe, backup, redundancy and other measures to ensure the safe use of such applications if the Programs are used for such purposes, and we disclaim liability for any damages caused by such use of the Programs.

The Programs may provide links to Web sites and access to content, products, and services from third parties. Oracle is not responsible for the availability of, or any content provided on, third-party Web sites. You bear all risks associated with the use of such content. If you choose to purchase any products or services from a third party, the relationship is directly between you and the third party. Oracle is not responsible for: (a) the quality of third-party products or services; or (b) fulfilling any of the terms of the agreement with the third party, including delivery of products or services and warranty obligations related to purchased products or services. Oracle is not responsible for any loss or damage of any sort that you may incur from dealing with any third party.

Oracle, JD Edwards, and PeopleSoft are registered trademarks of Oracle Corporation and/or its affiliates. Other names may be trademarks of their respective owners.

Contents

FIGURES.....	4
PREFACE.....	5
<i>Audience.....</i>	<i>5</i>
<i>Additional Information.....</i>	<i>5</i>
<i>Notational Conventions</i>	<i>5</i>
<i>E-Delivery.....</i>	<i>6</i>
<i>Manual History</i>	<i>6</i>
CHAPTER 1	7
WEBLOGIC REQUIREMENTS	7
<i>Locating the Configuration Files.....</i>	<i>7</i>
CHAPTER 2	8
SETTING UP WEBLOGIC	8
<i>Creating a New Server Domain.....</i>	<i>8</i>
<i>Adding a System Property to WL Server</i>	<i>15</i>
CHAPTER 3	18
WEBLOGIC MAIN CONSOLE	18
<i>Starting the WebLogic Server</i>	<i>18</i>
<i>Accessing the WebLogic Main Console.....</i>	<i>18</i>
<i>Editing on the WebLogic Main Console</i>	<i>19</i>
<i>Installation of Required Libraries.....</i>	<i>20</i>
CHAPTER 4	24
PREPARATION FOR DB2 INSTALLATION.....	24
CHAPTER 5	25
INSTALLATION OF THE .EAR FILE	25
<i>Finishing the Application Installation</i>	<i>27</i>
<i>List of Deployments.....</i>	<i>28</i>
<i>Project Composition</i>	<i>29</i>
CHAPTER 6	30
CREATING A SOFTRATER DATABASE	30
<i>IBM DB2</i>	<i>30</i>
<i>Microsoft SQL Server.....</i>	<i>31</i>
<i>ORACLE.....</i>	<i>32</i>
CHAPTER 7	33
ACCESSING THE APPLICATION.....	33
CHAPTER 8	34
SUPPORT	34
INDEX.....	35

Figures

Figure 1 – Start Menu	8
Figure 2 – Creating New WebLogic Domain	9
Figure 3 – Selecting Domain Source	10
Figure 4 – Creating User Name and Password	11
Figure 5 – Configuring Server Start Mode and JDK	12
Figure 6 – Customizing Environment and Service Settings	13
Figure 7 – Creating WebLogic Domain	14
Figure 8 – Start Menu	15
Figure 9 – startWebLogic.cmd File	16
Figure 10 – Editing startWebLogic.cmd File	16
Figure 11 – Edited startWebLogic.cmd File	17
Figure 12 – Logging into WebLogic Server	18
Figure 13 – WebLogic Console	19
Figure 14 – Lock & Edit	19
Figure 15 – Deployments Page	20
Figure 16 – List of Libraries	20
Figure 17 – List of Libraries	21
Figure 18 – Install the Deployment as a Library	21
Figure 19 – Selecting Defaults	22
Figure 20 – Activate Changes	23
Figure 21 – Select the Application .EAR	25
Figure 22 – Verify Application Installation	26
Figure 23 – Successful Installation	26
Figure 24 – Start the Application	27
Figure 25 – Starting Application	27
Figure 26 – List of Deployments	28
Figure 27 – Project Composition	29

Preface

Welcome to *Oracle Insurance Insbridge Rating and Underwriting SoftRater for WebLogic Installation Guide*. This guide describes how to install and configure SoftRater for WebLogic Server 9.2. SoftRater may be used in conjunction with the Oracle Insurance Insbridge Rating and Underwriting RateManager (RateManager) system to process rating requests or it may stand alone.

The Insbridge SoftRater Server (IBSS) is the container for all Insbridge web components including the SoftRater Engine. All independent Insbridge components will be contained in the IBSS.

Audience

This guide is intended for technical personal, such as installers, system administrators and others tasked with configuring SoftRater that would be involved in the maintenance and operation of SoftRater or RateManager. The audience for this guide should have a thorough knowledge of WebLogic.

Additional Information

This document may reference the following abbreviations:

- **WL:** WebLogic Server
- **JNDI:** Java Naming and Directory Interface

For more information, see these Oracle Insurance resources:

Oracle Insurance IBSS User Guide

Notational Conventions

This section explains the conventions used in this book:

Menu selections are shown with arrows. For example, the command to select the **Print** choice from the **File** menu looks as follows:

Select **File**►**Print**

File names, path names and actions to be taken are shown in **bold**.

New or emphasized terms are shown in *italics*.

`Monospace` type indicates code that appears on the screen or that you must enter.

E-Delivery

The Insbridge Rating and Underwriting (IBRU) System is available as a download from the Oracle E-Delivery system. Downloaded files are zipped. Prior to installation, please make sure the source machine(s) where SoftRater for WebLogic will be loaded has an unzip utility.

An unzip utility for most platforms is available on the E-Delivery download page.

Documentation from E-Delivery is in PDF format. Prior to installation, please make sure the source machine(s) where SoftRater for WebLogic documentation will be loaded has a PDF reader.

Files are downloaded with part numbers as file names. Please make note of the part numbers you have downloaded and the corresponding file name. For example, if the SoftRater for WebLogic 3.12.0 installation file is part # 15555-01, the file name should be V15555-01. You may be asked to provide this information if you need to contact Oracle Insurance Support.

The SoftRater for WebLogic version 3.12.0 zip file will contain:

- The 3.12.0-insbridge-wbl-eng File
 - insbridge.net.softmaterconfig.xml
 - SR_WL_2.0.0.69.ear

No license file is required.

If you are using Insbridge Framework Administrator and RateManager, SoftRater can be installed any time after the Insbridge Framework Administrator and RateManager have been installed. SoftRater must be installed prior to any users creating packages.

Manual History

New editions incorporate any updates issued since the previous edition.

Edition	Publication Number	Product Version	Publication Date	Comment
1 st Edition	P01-762-01	V 3.8.9	April 2008	WebLogic 9.2
2 nd Edition	P01-762-02	V 3.9.0	May 2008	WebLogic 9.2
3 rd Edition	P01-762-03	V 3.10	September 2008	WebLogic 9.2
4 th Edition	P01-762-04	V 3.11	December 2008	WebLogic 9.2
5 th Edition	P01-762-05	V 3.12	July 2009	WebLogic 9.2

WebLogic Requirements

WebLogic should be up and running prior to installing the .EAR file.

Locating the Configuration Files

We suggest creating a C:\Insbridge\config folder but you may use any folder name you want and you can place the folder anywhere you want. This folder will hold the necessary files for the WebLogic for SoftRater installation. Take note of the location and make sure you have created this folder prior to running the installation.

NOTE

For the purposes of this guide, the location will be referred to as C:\Insbridge\config.

The WebLogic for SoftRater zip file should be downloaded to the WebLogic server prior to configuration. Unzip the file. There will be an XML file and an .EAR file inside.

- **SR_WL_2.0.0.69.ear**
- **Insbridge.net.softmaterconfig.xml**

Place these files in the C:\Insbridge\config folder.

NOTE

It is important that the configuration path specified in the **Error! Reference source not found.** section of this document contain both the application and configuration files. These files need to be placed where you specify in the startWebLogic.cmd file.

Once you have these files in place, do not move them.

Setting up WebLogic

WebLogic should be up and running prior to installing the .EAR file. If not, the following steps may be executed.

NOTE This is a suggested installation. Your setup may vary.

Creating a New Server Domain

To create a new server domain go to your **Start Menu**►**BEA Products**►**Tools**►**Configuration Wizard** and follow the wizard according to your needs. In most cases, if you just want to install the Insbridge application, a default basic configuration would be enough.

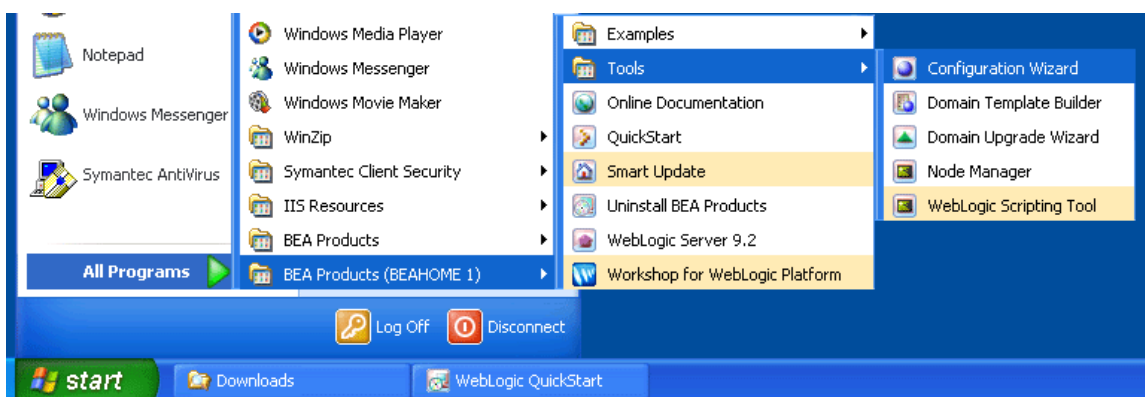


Figure 1 – Start Menu

To Perform a Basic Install

On the Welcome screen, you will want to create a new WebLogic domain.



Figure 2 – Creating New WebLogic Domain

1. Select **Create a New WebLogic domain**.
2. Click **Next** to advance to the next screen.

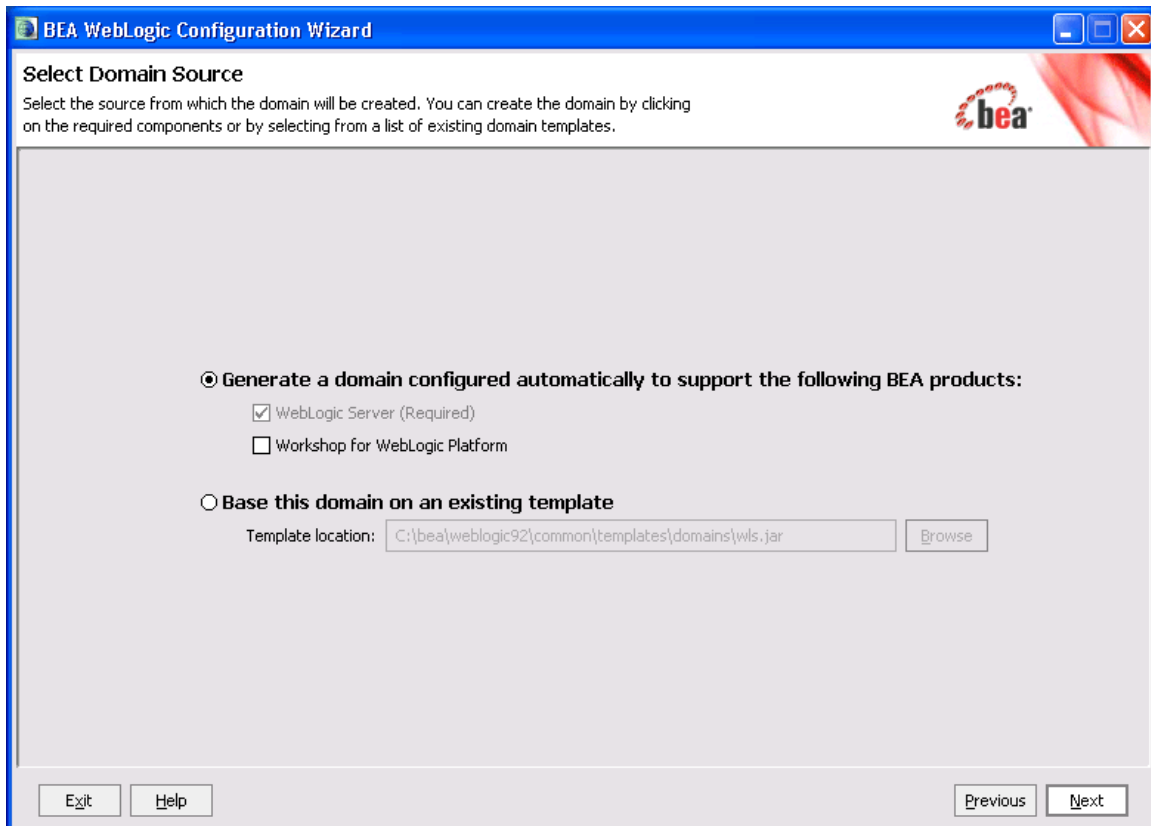
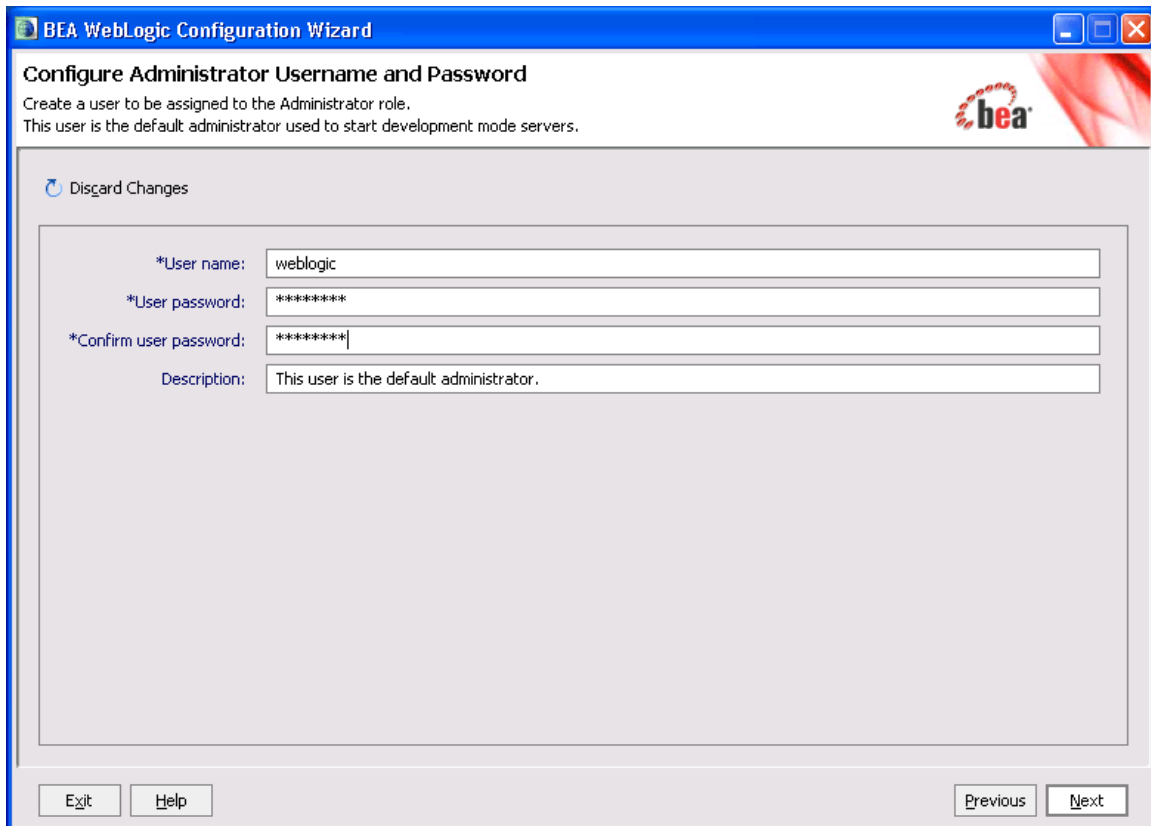


Figure 3 – Selecting Domain Source

3. For a basic installation, select **Generate a domain configured automatically to support the following BEA products:**. The **WebLogic Server** option is the only option you will need to select.
4. Click **Next** to continue.



The image shows a screenshot of the BEA WebLogic Configuration Wizard window. The title bar reads "BEA WebLogic Configuration Wizard". The main heading is "Configure Administrator Username and Password". Below the heading, it says "Create a user to be assigned to the Administrator role. This user is the default administrator used to start development mode servers." There is a "Discard Changes" link with a circular arrow icon. The form contains four fields: "*User name:" with the value "weblogic", "*User password:" with "*****", "*Confirm user password:" with "*****", and "Description:" with "This user is the default administrator.". At the bottom, there are "Exit", "Help", "Previous", and "Next" buttons.

BEA WebLogic Configuration Wizard

Configure Administrator Username and Password

Create a user to be assigned to the Administrator role.
This user is the default administrator used to start development mode servers.

[Discard Changes](#)

*User name: weblogic

*User password: *****

*Confirm user password: *****

Description: This user is the default administrator.

Exit Help Previous Next

Figure 4 – Creating User Name and Password

5. Next, configure the Administrator User name and password. The **User name** and **password** are WebLogic, unless otherwise specified.
6. The **Description** is optional.
7. Click **Next** to continue.

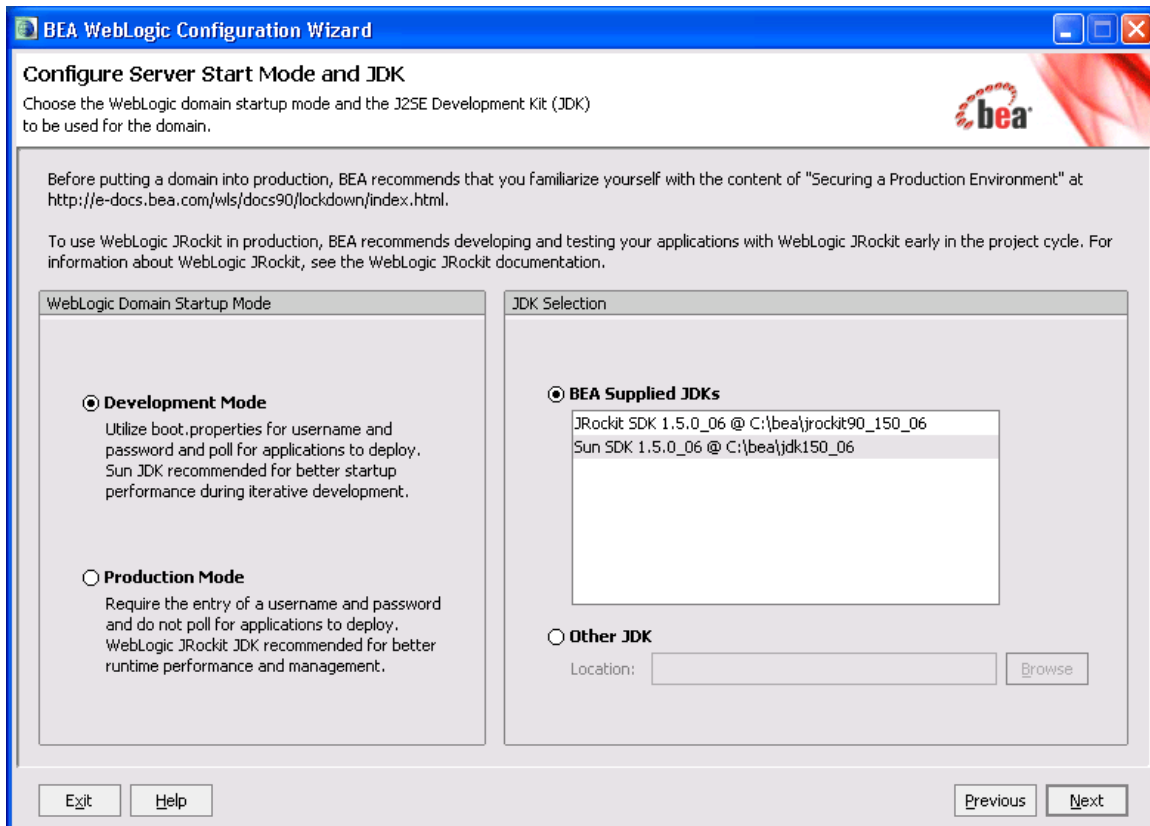


Figure 5 – Configuring Server Start Mode and JDK

8. Select **Development Mode** for the Startup Mode.
9. Select the **BEA Supplied JDKs**.
10. Click **Next** to continue.

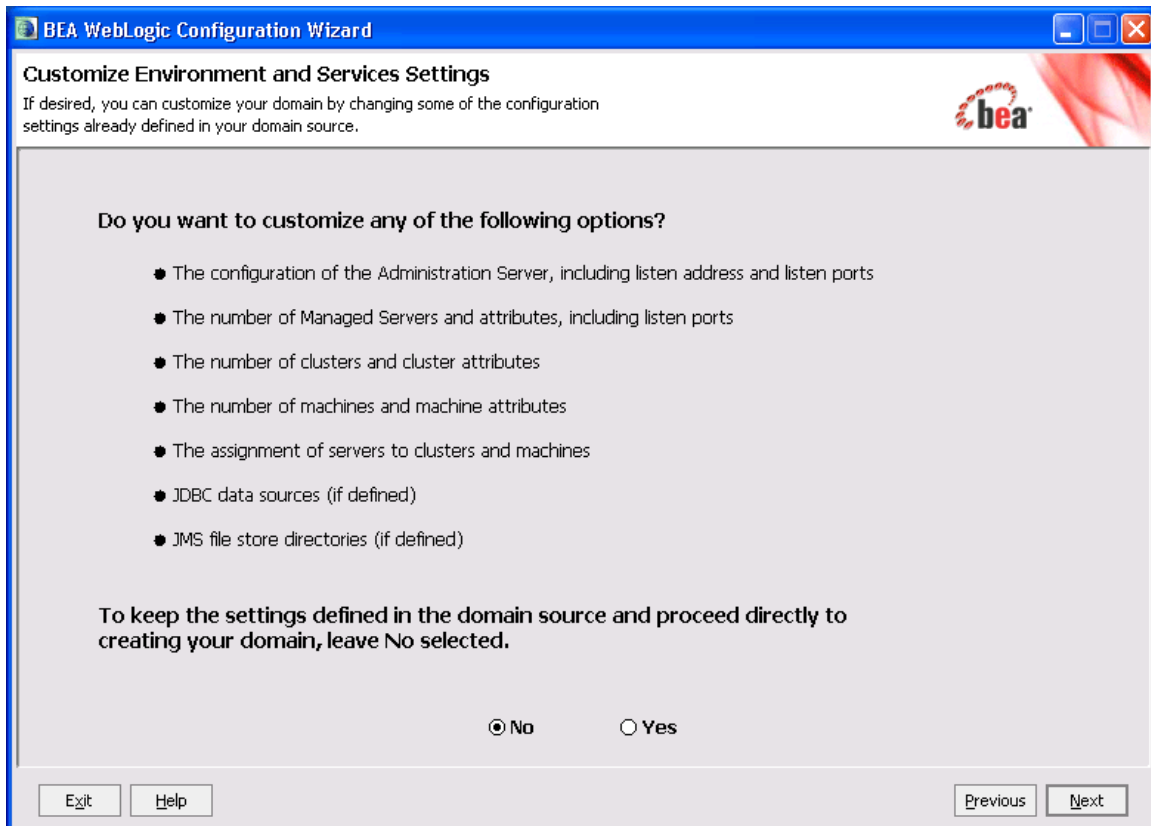


Figure 6 – Customizing Environment and Service Settings

11. Select **No**. You do not need to configure any Environment and Services Settings.
12. Click **Next**.

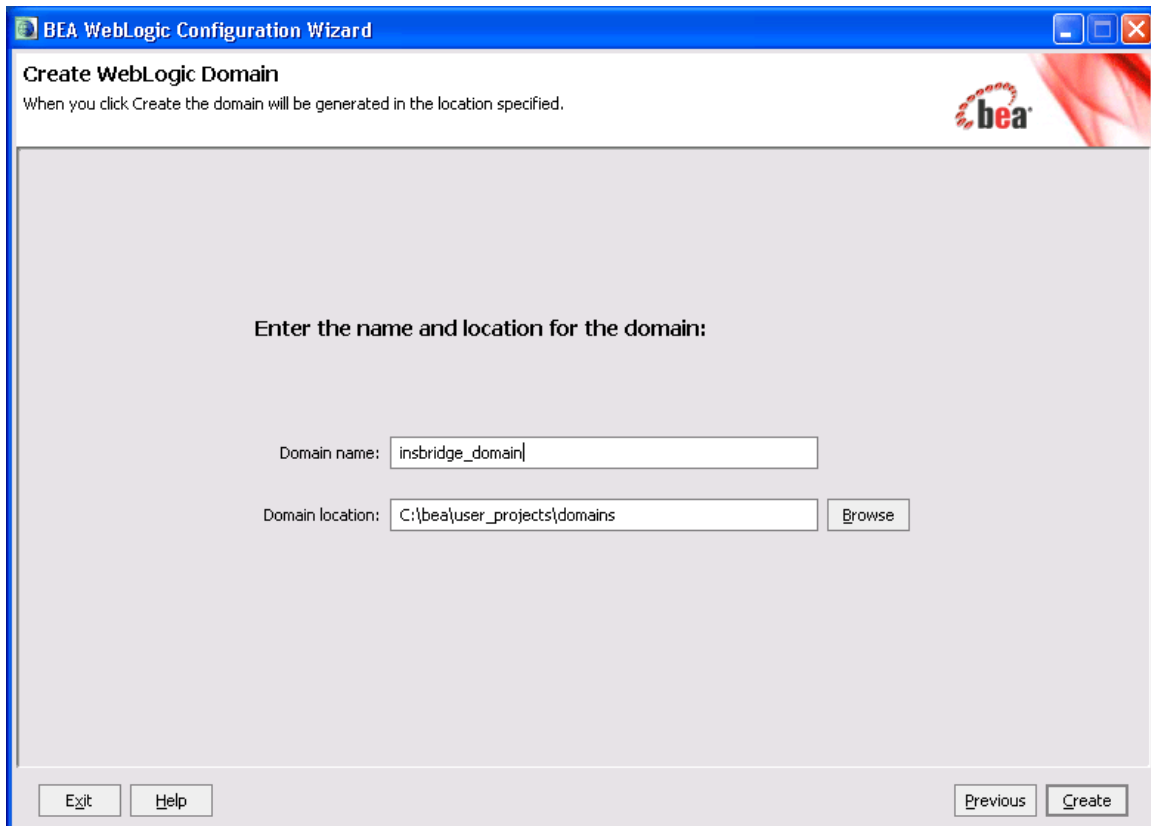


Figure 7 – Creating WebLogic Domain

13. Enter in a **Domain Name**.
14. Enter in or Browse for the **Domain Location**. The Domain location should be the same as the installation drive. Make note of the location. You will need this information later.
15. Click **Create**.

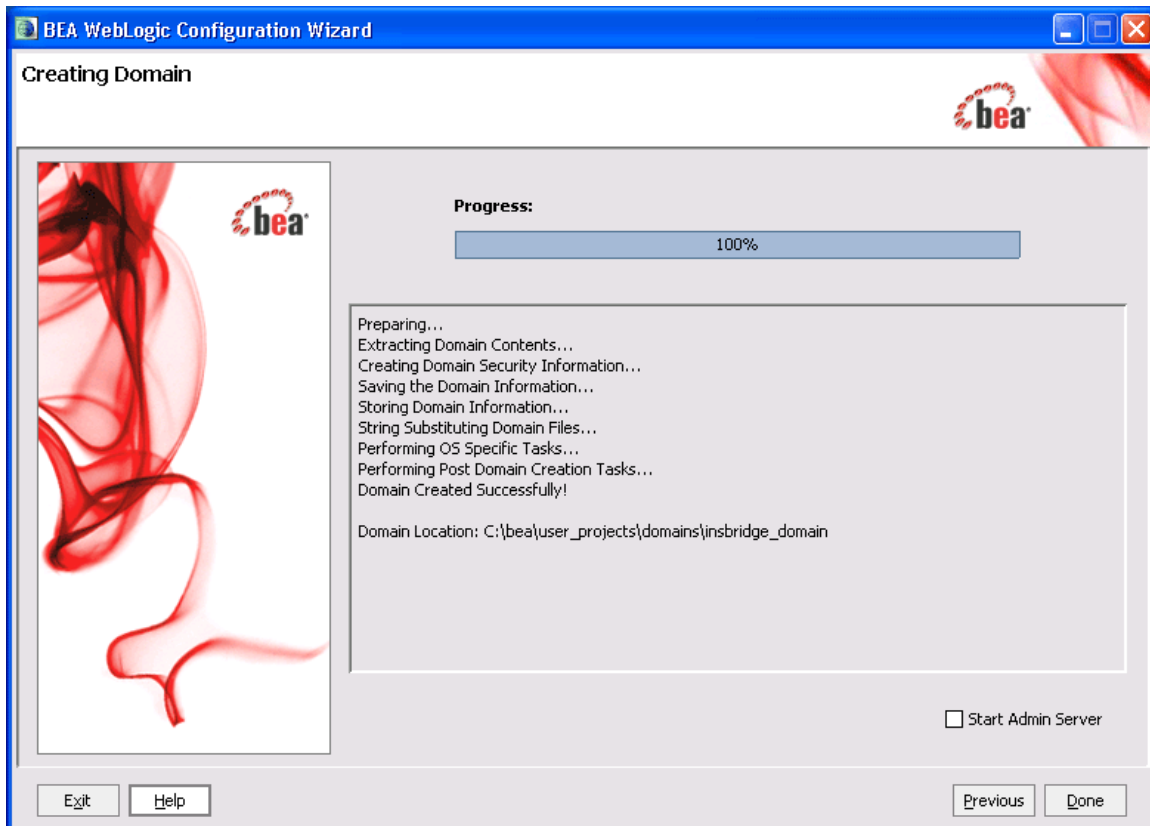


Figure 8 – Start Menu

16. WebLogic will begin the creation of the Domain. The progress bar will display 100% when complete.
17. Click **Done** to close the Wizard. The domain is ready to use.

Adding a System Property to WL Server

The Insbridge application requires a shared variable on the WebLogic Server that points to the location of the configuration files.

In WebLogic, it is not possible to define variables as part of the Server JNDI. For this reason, you must create a Java System property in the server initialization that can be used by the application to retrieve the path that accesses the system configuration files.

NOTE

If the server domain was running during these modifications, you will need to restart the server before proceeding.

Adding to the WebLogic Server - Windows

1. In a Windows Explorer window, enter the server domain location, i.e. %Domain=Home%.

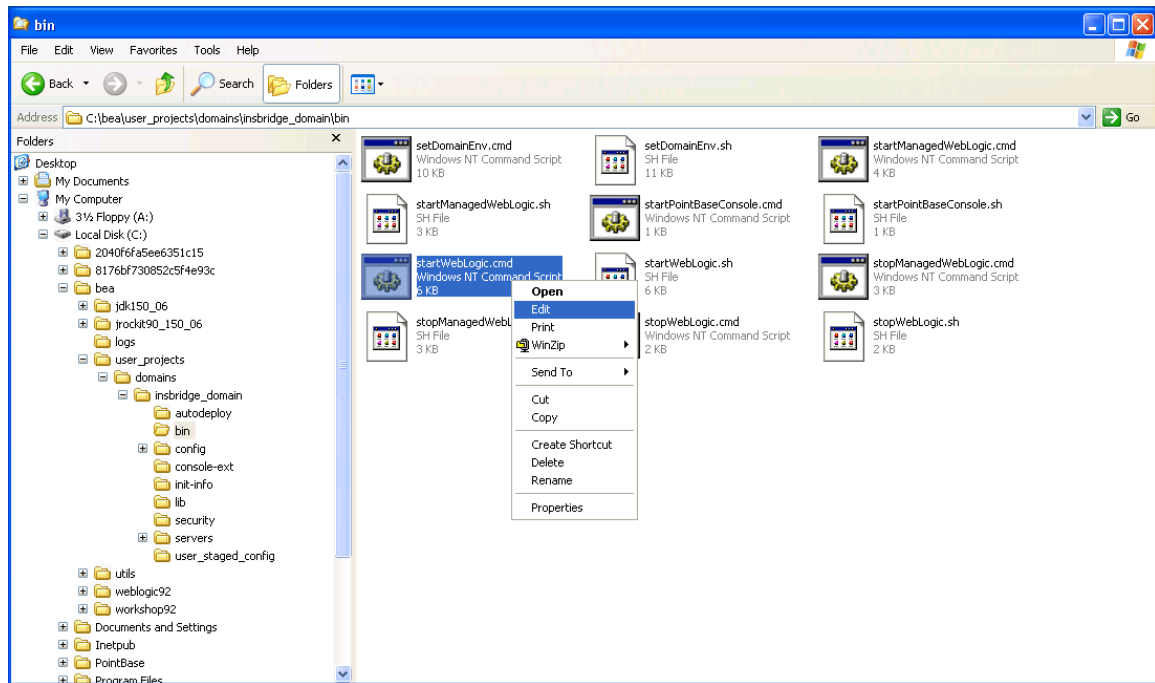


Figure 9 – startWebLogic.cmd File

2. In the “bin” folder locate the “startWebLogic.cmd” file. Open the file and right click to **Edit**. Scroll towards the end of the file.

```
if "%WLS_REDIRECT_LOG%"==" " {  
  
%JAVA_HOME%\bin\java %JAVA_VM% %MEM_ARGS% %JAVA_OPTIONS% -Dweblogic.Name=%SERVER_NAME% -  
Djava.security.policy=%WL_HOME%\server\lib\weblogic.policy %PROXY_SETTINGS% %SERVER_CLASS%  
  
} else {  
  
%JAVA_HOME%\bin\java %JAVA_VM% %MEM_ARGS% %JAVA_OPTIONS% -Dweblogic.Name=%SERVER_NAME% -  
Djava.security.policy=%WL_HOME%\server\lib\weblogic.policy %PROXY_SETTINGS% %SERVER_CLASS%  
>"%WLS_REDIRECT_LOG%" 2>&1  
  
}
```

Figure 10 – Editing startWebLogic.cmd File

3. Locate the **DOS if instruction** that looks similar to the one in figure 1. Your exact file may have slight variations.
4. In both conditions of this instruction you will need to insert the following system property declaration:

- **-DINSBRIDGE_APP_DIR="C:\insbridge\config".**

In this declaration, you will add a system property to the Java Virtual Machine using the “-D” parameter, then you will specify “**INSBRIDGE_APP_DIR**” as the name of the new variable.

You must also specify the path where the configuration will be located. i.e. “**C:\Insbridge\Config**”. Where **C:\Insbridge\config** is the folder you created earlier.

5. **Save** your changes.

```
if "%WLS_REDIRECT_LOG%"==" " (
%JAVA_HOME%\bin\java %JAVA_VM% %MEM_ARGS% %JAVA_OPTIONS% -Dweblogic.Name=%SERVER_NAME% -
Djava.security.policy=%WL_HOME%\server\lib\weblogic.policy -DINSBRIDGE_APP_DIR= "C:\Insbridge\Config"
%PROXY_SETTINGS% %SERVER_CLASS%
) else (
%JAVA_HOME%\bin\java %JAVA_VM% %MEM_ARGS% %JAVA_OPTIONS% -Dweblogic.Name=%SERVER_NAME% -
Djava.security.policy=%WL_HOME%\server\lib\weblogic.policy -DINSBRIDGE_APP_DIR= "C:\Insbridge\Config"
%PROXY_SETTINGS% %SERVER_CLASS% >"%WLS_REDIRECT_LOG%" 2>&1
)
```

Figure 11 – Edited startWebLogic.cmd File

6. The variable will be added to the Server the next time it is started.

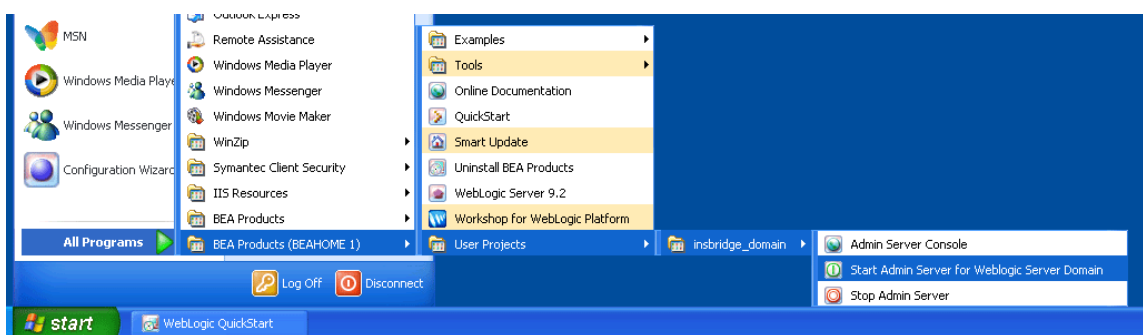
Adding to the WebLogic Server – UNIX

The procedure is similar in UNIX. Locate the “**startWebLogic.sh**” file. Open the file and right click to **Edit**. Scroll towards the end of the file and make the necessary changes.

WebLogic Main Console

Starting the WebLogic Server

To start the WebLogic server, go to the “**Start Menu>BEA Products>User Projects><Your Server Domain>>Start Admin Server for WebLogic Server Domain**”.



NOTE

Please do not close the command prompt window that starts the service. Closing the command prompt window will stop the webserver instance.

Accessing the WebLogic Main Console

The WebLogic Main Console can be accessed once the WebLogic server domain is running by typing <http://<ServerName or IP Address>:<Port>/console> on your browser. You will need the administrator password used when the server domain was created. i.e. <http://localhost:7001/console>

 A screenshot of the WebLogic Server Administration Console login page. The page has a dark blue header with the BEA logo and the text 'WEBLOGIC SERVER ADMINISTRATION CONSOLE'. Below the header, the text 'Log in to work with the WebLogic Server domain' is displayed. There are two input fields: 'Username:' with the value 'weblogic' and 'Password:' with masked characters (dots). A 'Log In' button is located at the bottom right of the form.

Figure 12 – Logging into WebLogic Server

Editing on the WebLogic Main Console

The WebLogic administration console offers multiple configuration options. This guide will focus on the deployments features that can be accessed by clicking the highlighted **Deployments** link on the left hand of the console.

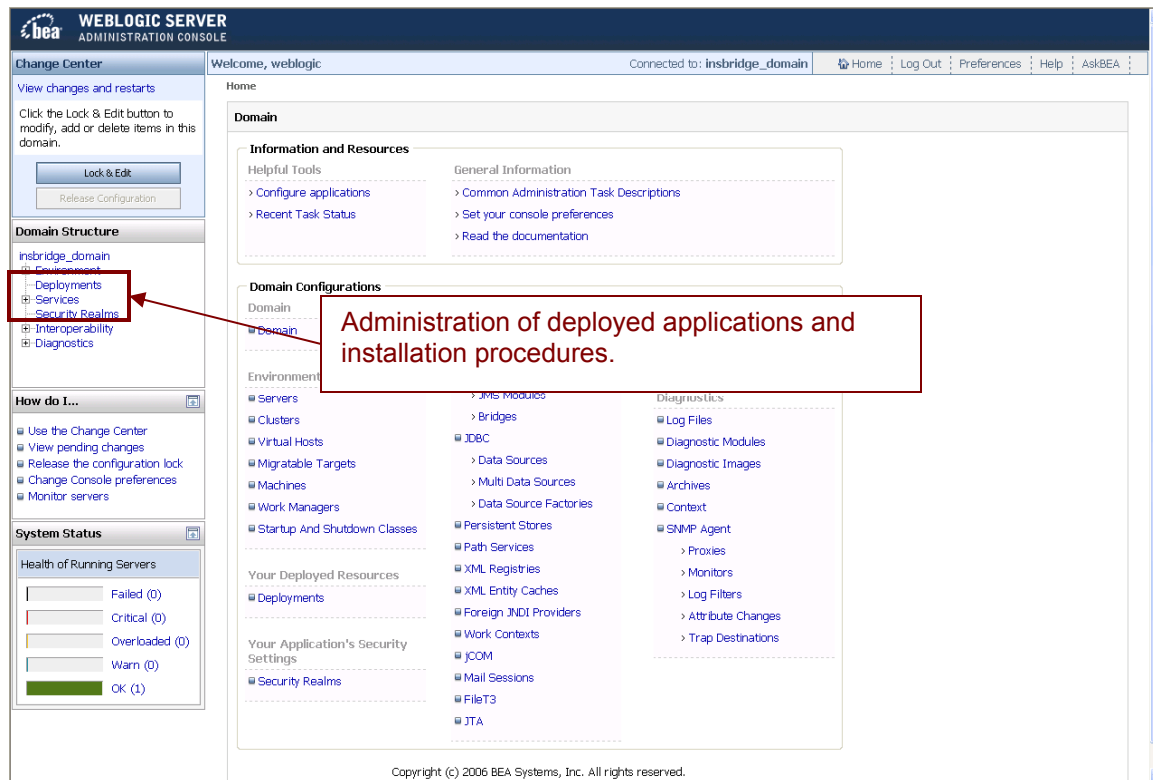



Figure 13 – WebLogic Console

The **Lock & Edit** option must be selected every time you want to modify the current server configuration or change the status of the deployed applications.



Figure 14 – Lock & Edit

1. Click the **Lock & Edit** button . In edit mode, the Lock & Edit button will be grayed out.
2. Click the **Deployments** link. The screen will refresh with the Deployments Page.

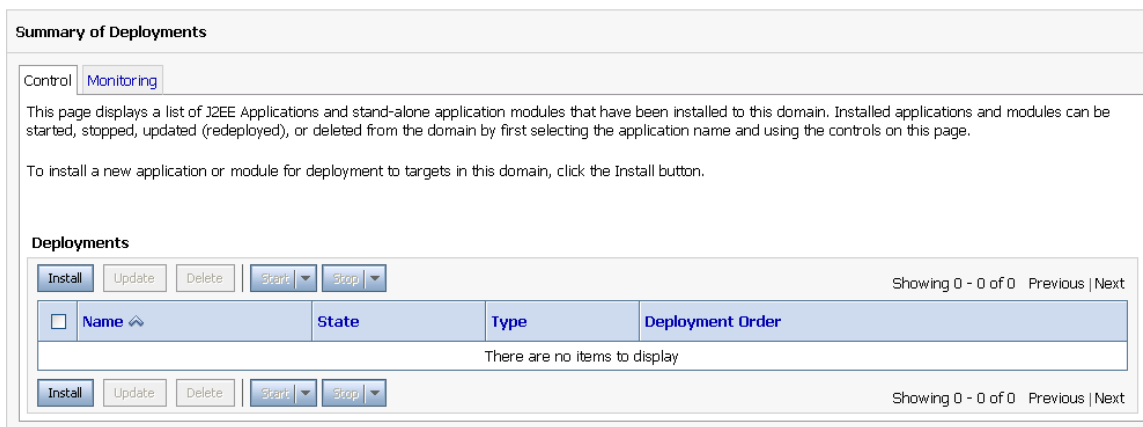


Figure 15 – Deployments Page

3. The next step is to install the required libraries.

Installation of Required Libraries

The WebLogic Insbridge application requires seven WebLogic libraries to be deployed into the server prior to the application installation itself. Each library needs to be installed separately.

Below is the list of required libraries. C:\bea\weblogic92\common\deployable-libraries

Library	Path/File Name
Beehive-controls-1.0	<WebLogic folder>\common\deployable-libraries\beehive-controls-1.0.ear
Beehive-netui-1.0	<WebLogic folder>\common\deployable-libraries\beehive-netui-1.0.war
Beehive-netui-resources-1.0	<WebLogic folder>\common\deployable-libraries\beehive-netui-resources-1.0.war
Jstl	<WebLogic folder>\common\deployable-libraries\jstl-1.1.2.war
Struts-1.2	<WebLogic folder>\common\deployable-libraries\struts-1.2.war
WebLogic-controls-1.0	<WebLogic folder>\common\deployable-libraries\weblogic-controls-1.0.ear
Wls-commonslogging-bridge	<WebLogic folder>\common\deployable-libraries\wls-commonslogging-bridge.ear

Figure 16 – List of Libraries

1. From the Summary of Deployments Page, click the **Install** button. The screen will refresh to the Install Application Assistant page.

NOTE

If the Install, Update and Delete buttons are disabled, you must click on the Lock & Edit button. This will open the Deployments for Installation, Editing and Deletion.

2. The list of Locations will be displayed. Click the location you need to reach the library specified in figure 7 (all libraries should be located in the same folder). For example, C:\bea\weblogic92\common\deployable-libraries.
3. Select the desired library. You will only be able to select one library at a time. Please note that for some libraries you will need the .ear file and for others, the .war file.

Figure 17 – List of Libraries

4. Click the **Next** button

NOTE

You can navigate back to the previous folder by clicking the hyperlinks in the **Location:** path.

Figure 18 – Install the Deployment as a Library

5. Select **Install this deployment as a library** and click **Next**.
6. On the **Optional Settings** page, it is recommended that you keep the default values for all libraries and click **Finish**.

Welcome, weblogic Connected to: insbridge_domain Home Log Out Preferences Help AskBEA

Home > Summary of Deployments

Install Application Assistant

Back Next Finish Cancel

Optional Settings

You can modify these settings or accept the defaults

General

What do you want to name this deployment?

Name:

Specification Version: 1.0

Implementation Version: 1.0

Security

What security model do you want to use with this application?

☒ DD Only: Use only roles and policies that are defined in the deployment descriptors.

☐ Custom Roles: Use roles that are defined in the Administration Console; use policies that are defined in the deployment descriptor.

☐ Custom Roles and Policies: Use only roles and policies that are defined in the Administration Console.

☐ Advanced: Use a custom model that you have configured on the realm's configuration page.

Source accessibility

How should the source files be made accessible?

☒ Use the defaults defined by the deployment's targets

Recommended selection.

☐ Copy this application onto every target for me

During deployment, the files will be copied automatically to the managed servers to which the application is targeted.

☐ I will make the deployment accessible from the following location

Location:

Provide the location from where all targets will access this application's files. This is often a shared directory. You must ensure the application files exist in this location and that each target can reach the location.

Back Next Finish Cancel

Figure 19 – Selecting Defaults

7. After the library has been added, you will be placed on the Summary of Deployments page. The library you added will be listed. Read the messages at the top of the screen and correct any error messages. You will need to repeat this process for all seven libraries.
8. After all seven libraries have been installed; click the **Activate Changes** button in the left hand side of the page to apply the changes to the server.

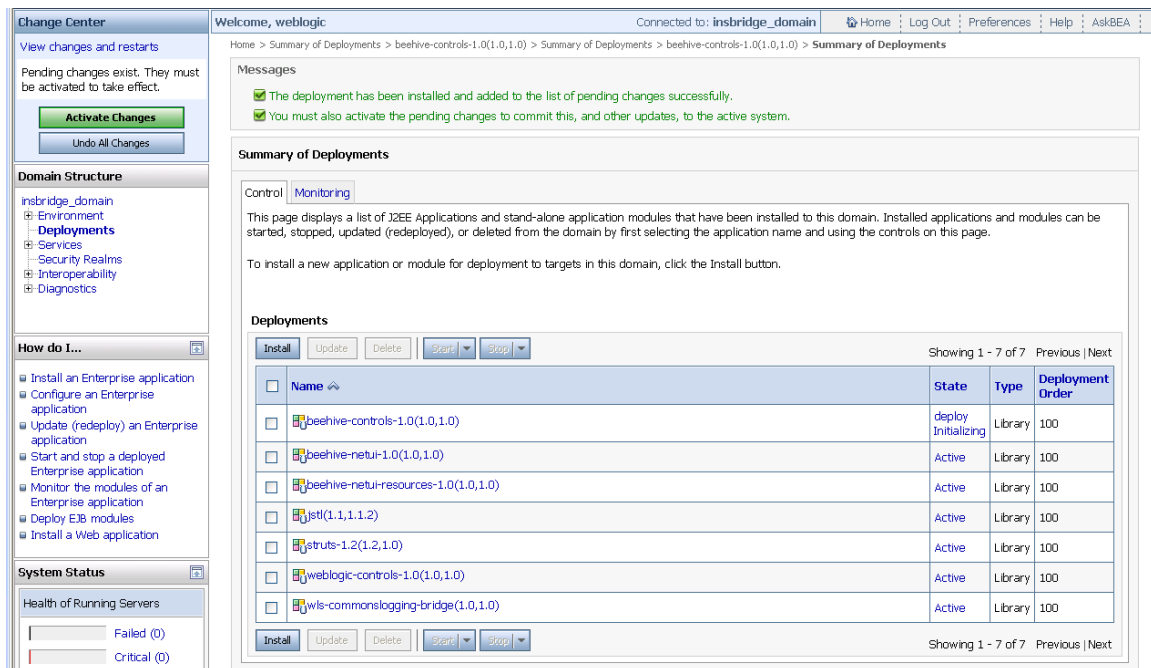


Figure 20 – Activate Changes

The screen will refresh. Your libraries will be active.

NOTE

On the Optional Settings page, if you click **Next** instead of Finish, you will be placed on a second Additional Configuration options screen.

If you leave the default, Yes, you will be placed on the Configuration screen. Click Save to save your library. You will need to click the Deployments link on the left hand side of the screen to return to the Deployments page.

If you select No, you will be returned to the Deployment page.

Preparation for DB2 Installation

For DB2 installations please follow the DB2 instruction set below prior to installing EAR file.

For DB2 installations only.

1. Unzip the files to any designated location.
2. Locate and copy the DB2 jar file to the "APP-INF\lib" folder. The DB2 JAR file should be in your DB2 installation folder java directory. You may also download this file from IBM directly.
3. Run the batch file (ex: example.bat) from a console using the following parameters:
 - a- Java_Home folder. i.e.: "C:\java\bea\jdk150_10"
 - b- Installation EAR filename. i.e.: **SR_WL_2.0.0.69.EAR**

Example: "DB2_Patch C:\java\bea\jdk150_SR_WL_2.0.0.69.EAR"
4. Check the output messages from the batch file:
 - a- If Java_Home folder is invalid an error will be shown.

"The provided java_home path is not valid."
"Please provide a valid java_home folder in order to continue."
 - b- If parameters are valid, the application will show the compression ratio used for the DB2 jar file.
 - c- A message showing "SoftRater EAR Patch applied successfully..." will be displayed once the process completes.

NOTE

Upon completion of these steps, the batch file will copy the original EAR adding a "DB2_" prefix to the new filename. The new file "DB2_<EAR_FileName>" will be modified adding the DB2 jar file.

The original EAR should be located on the same folder as the batch file so it can be copied and renamed in the same operation.

NOTE

An example.bat file is also provided. You may need to change the Java_Home and EAR values in order to run it.

Installation of the .EAR File

NOTE

For SQL Server, no additional steps are required. For DB2, please make sure you have completed the DB2 preparation requirements. See previous section.

The installation of the Insbridge .EAR File begins in the same way as the installation of the WebLogic libraries.

NOTE

It is recommended that the .EAR file be located within the WebLogic92 Source Code file.

1. From the Summary of Deployments Page, click the **Install** button. The screen will refresh to the Install Application Assistant page.

NOTE

If the Install, Update and Delete buttons are disabled, you must click on the Lock & Edit button. This will open the Deployments for Installation, Editing and Deletion.

2. The list of Locations will be displayed. Click the location you need to reach the .EAR file.
3. Select the **.EAR** file.

Figure 21 – Select the Application .EAR

4. Click the **Next** button.
5. Select **Install this deployment as an application** and click **Next**.

Welcome, weblogic Connected to: insbridge_domain [Home](#) [Log Out](#) [Preferences](#) [Help](#) [AskBEA](#)

Home > Summary of Deployments > beehive-controls-1.0(1.0,1.0) > Summary of Deployments > beehive-controls-1.0(1.0,1.0) > **Summary of Deployments**

Install Application Assistant

[Back](#) [Next](#) [Finish](#) [Cancel](#)


Choose targeting style
Targets are the servers, clusters, and virtual hosts on which this deployment will run. There are several ways you can target an application.

☒ **Install this deployment as an application**
The application and its components will be targeted to the same locations. This is the most common usage.

☐ **Install this deployment as a library**
Application libraries are deployments that are available for other deployments to share. Libraries should be available on all of the targets running their referencing applications.

[Back](#) [Next](#) [Finish](#) [Cancel](#)

Figure 22 – Verify Application Installation

6. On the **Optional Settings** page, it is recommended that you keep the default values. The deployment name should appear as SR_WL_2.
7. Click **Finish**.
8. After the .EAR File has been added, you will be placed on the Summary of Deployments page. The .EAR File you added will be listed. Read the messages at the top of the screen and correct any error messages.
9. Click the **Activate Changes** button  in the left hand side of the page to apply the changes to the server.

Welcome, weblogic Connected to: insbridge_domain [Home](#) [Log Out](#) [Preferences](#) [Help](#) [AskBEA](#)

Home > Summary of Deployments > beehive-controls-1.0(1.0,1.0) > Summary of Deployments > beehive-controls-1.0(1.0,1.0) > **Summary of Deployments**

Messages
☒ All changes have been activated. No restarts are necessary.

Summary of Deployments

[Control](#) [Monitoring](#)

This page displays a list of J2EE Applications and stand-alone application modules that have been installed to this domain. Installed applications and modules can be started, stopped, updated (redeployed), or deleted from the domain by first selecting the application name and using the controls on this page.

To install a new application or module for deployment to targets in this domain, click the Install button.

Deployments

[Install](#) [Update](#) [Delete](#) [Start](#) [Stop](#)

Showing 1 - 8 of 8 [Previous](#) [Next](#)

<input type="checkbox"/>	Name	State	Type	Deployment Order
<input type="checkbox"/>	beehive-controls-1.0(1.0,1.0)	Active	Library	100
<input type="checkbox"/>	beehive-netui-1.0(1.0,1.0)	Active	Library	100
<input type="checkbox"/>	beehive-netui-resources-1.0(1.0,1.0)	Active	Library	100
<input type="checkbox"/>	ijstl(1.1,1.1.2)	Active	Library	100
<input type="checkbox"/>	SR_WL_2	Prepared	Enterprise Application	100
<input type="checkbox"/>	struts-1.2(1.2,1.0)	Active	Library	100
<input type="checkbox"/>	weblogic-controls-1.0(1.0,1.0)	Active	Library	100
<input type="checkbox"/>	wls-commonslogging-bridge(1.0,1.0)	Active	Library	100

[Install](#) [Update](#) [Delete](#) [Start](#) [Stop](#)

Showing 1 - 8 of 8 [Previous](#) [Next](#)

Figure 23 – Successful Installation

Finishing the Application Installation

There are two final steps to complete the application installation. Make sure you are on the Summary of Deployments screen.

1. If showing, click the **Activate Changes** button on the left hand side of the screen. Messages will be displayed at the top of the screen. If there are any errors, correct them and try again. When the Activate Change button becomes the Lock & Edit button, all changes will have been made.
2. Select the checkbox next to the Insbridge Application deployment (SR_WL_2).
3. Select the **Start>Service All Request** option.

Summary of Deployments

Control **Monitoring**

This page displays a list of J2EE Applications and stand-alone application modules that have been installed to this domain. Installed applications and modules can be started, stopped, updated (redeployed), or deleted from the domain by first selecting the application name and using the controls on this page.

To install a new application or module for deployment to targets in this domain, click the Install button.

Deployments

Install Update Delete **Start** Stop

Showing 1 - 8 of 8 Previous | Next

<input type="checkbox"/>	Name	State	Type	Deployment Order
<input type="checkbox"/>	beehive-controls-1.0(1.0,1.0)	Active	Library	100
<input type="checkbox"/>	beehive-netui-1.0(1.0,1.0)	Active	Library	100
<input type="checkbox"/>	beehive-netui-resources-1.0(1.0,1.0)	Active	Library	100
<input type="checkbox"/>	jstl(1.1,1.1.2)	Active	Library	100
<input checked="" type="checkbox"/>	SR_WL_2	Prepared	Enterprise Application	100
<input type="checkbox"/>	struts-1.2(1.2,1.0)	Active	Library	100
<input type="checkbox"/>	weblogic-controls-1.0(1.0,1.0)	Active	Library	100
<input type="checkbox"/>	wls-commonslogging-bridge(1.0,1.0)	Active	Library	100

Install Update Delete **Start** Stop

Showing 1 - 8 of 8 Previous | Next

Figure 24 – Start the Application

Welcome, weblogic Connected to: insbridge_domain Home Log Out Preferences Help AskBEA

Home > Summary of Deployments > beehive-controls-1.0(1.0,1.0) > Summary of Deployments > beehive-controls-1.0(1.0,1.0) > Summary of Deployments

Start Application Assistant

Yes No

Start Deployments

You have selected the following deployments to be started. Click 'Yes' to continue, or 'No' to cancel.

☒ SR_WL_2

Yes No

Figure 25 – Starting Application

4. Select **Yes** to start the application. The screen will refresh to the Deployments page.

List of Deployments

List of the final view of the deployments page after completing all the installation procedures listed on this document:

Summary of Deployments

Control

Monitoring

This page displays a list of J2EE Applications and stand-alone application modules that have been installed to this domain. Installed applications and modules can be started, stopped, updated (redeployed), or deleted from the domain by first selecting the application name and using the controls on this page.

To install a new application or module for deployment to targets in this domain, click the Install button.

Deployments

Install

Update

Delete

Start

Stop

Showing 1 - 8 of 8 Previous | Next

<input type="checkbox"/>	Name	State	Type	Deployment Order
<input type="checkbox"/>	beehive-controls-1.0(1.0,1.0)	Active	Library	100
<input type="checkbox"/>	beehive-netui-1.0(1.0,1.0)	Active	Library	100
<input type="checkbox"/>	beehive-netui-resources-1.0(1.0,1.0)	Active	Library	100
<input type="checkbox"/>	jstl(1.1,1.1.2)	Active	Library	100
<input type="checkbox"/>	SR_WL_2	Active	Enterprise Application	100
<input type="checkbox"/>	struts-1.2(1.2,1.0)	Active	Library	100
<input type="checkbox"/>	weblogic-controls-1.0(1.0,1.0)	Active	Library	100
<input type="checkbox"/>	wls-commonslogging-bridge(1.0,1.0)	Active	Library	100

Install

Update

Delete

Start

Stop

Showing 1 - 8 of 8 Previous | Next

Figure 26 – List of Deployments

Project Composition

The following shows the project composition that should appear when the SoftRater for WebLogic application is expanded. Verify that all the components were successfully installed.

<input type="checkbox"/>	SR_WL_2	Active	Enterprise Application	100
	Modules			
	IBSS		Web Application	
	SoftRaterEJB.jar		EJB Module	
	SoftServicesEJB.jar		EJB Module	
	weblogic-messagebuffer-mdb.jar		EJB Module	
	weblogic-timer-control.jar		EJB Module	
	EJBs			
	MessageBufferBean		EJB	
	SoftDataEJB		EJB	
	SoftRaterEJB		EJB	
	SoftServicesGatewayEJB		EJB	
	TimerService		EJB	
	Web Services			
	SoftDataWSService		Web Service	
	SoftRaterWSService		Web Service	
	SoftServicesGatewayWSService		Web Service	

Figure 27 – Project Composition

Creating a SoftRater Database

The Insbridge Framework Application container for the SoftRater J2EE EJB contains the JDBC connection drivers that support operational connectivity to the DBMS system listed before. It also contains vendor specific DDLs for the SoftRater operations database schema creation which can be altered by DBA's for setup compliance for varying corporate environments, i.e. TABLESPACE and SCHEMA target definitions.

To obtain Database Definition Language (DDL) scripts for a target DBMS type view the config/ddl subdirectory in the "Insbridge.Fwk.APP" WebLogic installation directory.

I.e.: \$WAS_HOME/installedApps/NODENAME/Insbridge.Fwk.APP.ear/config/ddl

Please allow the DBA to review the scripts before attempting to create a SoftRater database schema.

The SoftRater EJB data access system contains all the required JDBC drivers for connectivity to the support DBMS's. TCP/IP connection visibility to the DB Platform is required along with the database server system configured connection PORT for operational use of the SoftRater system. No other supplemental drivers or libraries are needed to establish a connection.

IBM DB2

SoftRater database schema is supported on all available DB2 database platforms.

JDBC Driver Class

"com.ibm.db2.jcc.DB2Driver"

For Native AS400 – "com.ibm.as400.access.AS400JDBCdriver"

Supported Version

7, 8

User Account Requirements

Create Table

Create Index

Query access to "SYSIBM.SYSTABLES"

Configuration Settings

- **Required**

The query dynamics of the SoftRater system requires some modification to Configuration settings. The following Performance Configurations parameters required to the target SoftRater database.

Instance Level – ASLHEAPSZ >= 1024

Instance Level – QUERY_HEAP_SZ => 10240

Database Level – APPLHEAPSZ >= 1024

- **Recommended**

The query dynamics of the SoftRater system will benefit from the following modification to Configuration settings.

Instance Level – INTRA_PARRALLEL (Yes) – For Symmetrical Processing Machines (CPU >=2)

Database Level – DFT_DEGREE (-1) – For Symmetrical Processing Machines (CPU >=2). Allow the optimizer to determine the degree of intra-partition parallelism based on the number of processors and the type of query.

Native z/OS

Support for IBM DB2 for native z/OS requires a specific set of the DDL scripts. They are labeled in the ddls\db2 directory with the ZOS DB2.ZOS prefix. DBA's should review these scripts, starting with the DB2.ZOS.SETUP.sql file that contains create templates for default; STORAGE GROUP, DATABASE, default TABLESPACE. All other table create scripts can be reviewed, altered and executed in any other to be consistent with chosen database standards.

Microsoft SQL Server

JDBC Driver Class

“com.microsoft.jdbc.sqlserver.SQLServerDriver”

Supported Version

2000, 2005 SP2

User Account Requirements

Create Table
Create Index
Execute on the SoftRater User Defined Stored Procedures

ORACLE

SoftRater database schema is support by all available ORACLE database platforms.

JDBC Driver Class

"oracle.jdbc.driver.OracleDriver"
Using prefix jdbc:oracle:thin:

Supported Version

9, 10

User Account Requirements

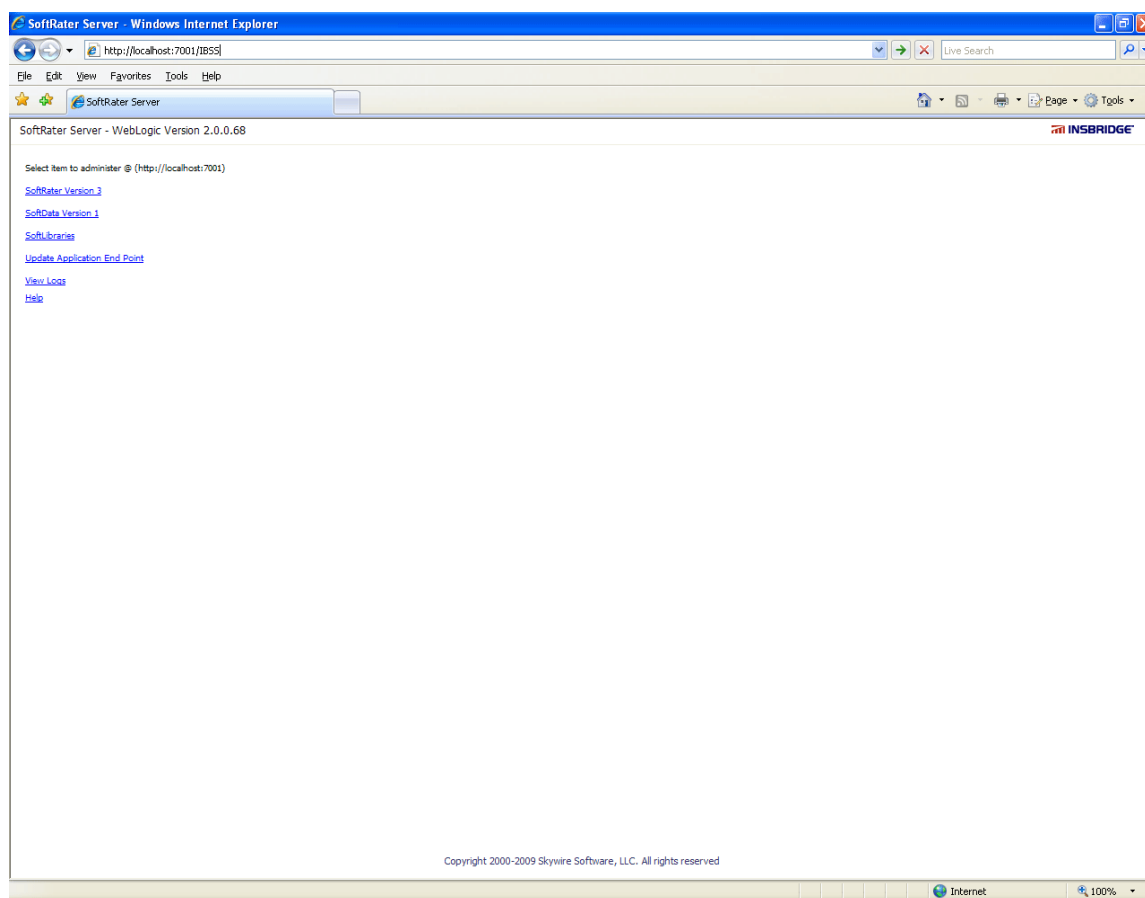
Create Table
Create Index
Query access to "SYS.OBJ\$"

IMPORTANT

It is strongly recommended that any database modification be performed by a qualified database administrator (DBA). The database setup procedures and tasks require the skill set of a database administrator. If you are not a database administrator, please stop. Improper setup may result in unwelcome changes to the database. Please consult with a qualified database administrator before proceeding.

Accessing the Application

You may be able to access the application by typing <http://<ServerName or IP Address>:7001/IBSS>

**NOTE**

Notice that if you changed the WebLogic default port (7001) during the Server Domain creation, you should change the default application port on the “[Update Application End Point](#)” option located in the Insbridge.Fwk.APP main page before accessing the application WebServices and methods.

NOTE

The IBSS parameter in the application URL must be capitalized.

If you need assistance with an Oracle Insurance Insbridge Rating and Underwriting System product, please log a Service Request using My Oracle Support at <http://metalink.oracle.com>.

Address any additional inquiries to:

Oracle Corporation
World Headquarters
500 Oracle Parkway
Redwood Shores, CA 94065
U.S.A.

Worldwide Inquiries:
Phone: +1.650.506.7000
Fax: +1.650.506.7200
oracle.com

Index

.		DDL	30
.EAR File		DDL scripts	
Location for Installing	25	zOS on DB2	31
A		ddl\db2 Directory	31
Abstract	5	Deployment	
Accessing		Optional Settings	26
WebLogic Console	18	Deployment List	28
Activate Changes	22, 27	Deployments	
Adding		WebLogic Console	19
System Property	15	DINSBRIDGE_APP_DIR	
C		Adding	16
Command Prompt Window		Directory	
Closing	18	ddl\db2	31
Config File		E	
Locating	7	Editing	
config/ddl subdirectory	30	WebLogic Console	19
Configuration Settings		WebLogic Server	16
DB2	31	<i>Edition Notice</i>	2
DB2 Modifications	31	Example bat file	24
D		I	
Database		IBRU	6
IBM DB2 Support	30	IBSS	5
MS SQL Support	31	Insbridge SoftRater Server	5
ORACLE Support	32	Installing	
SoftRater	30	Libraries	20, 21
Database Definition Language Scripts	30	J	
DB2		JDBC Connection Drivers	30
Installation Preparations	25	L	
zOS	31	Libraries	
DB2 Database		Installing	20, 21
Configuration Settings	31	Lock & Edit	19, 25
JDBC Driver Class	30	N	
Recommendations	31	Notational Conventions	5
SoftRater Database Schema	30		
Supported Version	30		
User Account Requirements	30		
DB2 Prefix			
Added to Filename	24		
DBA	30		
DBMS	30		

O

Optional Settings	
Deployment	26
ORACLE	
SoftRater Database Schema	32
ORACLE Database	
JDBC Driver Class	32
Supported Version	32
User Account Requirements	32

P

Performance Configurations Parameters	
SoftRater Database	31

R

Requirements	7
DB2 Database	30
ORACLE Database	32
SoftRater EJB Data Access System	30
SQL Server	32
TCP/IP Connection	30

S

Scripts	
Database Definition Language	30
SoftRater	

Supported Databases	30, 31, 32
SoftRater Database	30
SQL Server	
JDBC Driver Class	31
SoftRater Database Schema	31
Supported Version	31
User Account Requirements	32
Starting	
WebLogic Server	18
System	
Adding Property	15

T

TCP/IP Connection	
To DB Platform	30

W

WebLogic Port	
7001	33
WebSphere	
Viewing in Installation Directory	30

Z

z/OS	
BD2	31
ZOS DB2.ZOS	31