

# Oracle Insurance SoftRater for JBoss Installation Guide

Version 3.12

July 2009

*Oracle Insurance SoftRater for JBoss Installation Guide*

*Version 3.12*

*Part #E14992-01*

*Library #E15014-01*

*Formerly P01-773-02*

*July 2009*

Copyright © 2008, Oracle. All rights reserved.

*Primary Authors: Mary Elizabeth Wiger*

The Programs (which include both the software and documentation) contain proprietary information; they are provided under a license agreement containing restrictions on use and disclosure and are also protected by copyright, patent, and other intellectual and industrial property laws. Reverse engineering, disassembly, or decompilation of the Programs, except to the extent required to obtain interoperability with other independently created software or as specified by law, is prohibited.

The information contained in this document is subject to change without notice. If you find any problems in the documentation, please report them to us in writing. This document is not warranted to be error-free. Except as may be expressly permitted in your license agreement for these Programs, no part of these Programs may be reproduced or transmitted in any form or by any means, electronic or mechanical, for any purpose.

If the Programs are delivered to the United States Government or anyone licensing or using the Programs on behalf of the United States Government, the following notice is applicable:

**U.S. GOVERNMENT RIGHTS**

Programs, software, databases, and related documentation and technical data delivered to U.S. Government customers are "commercial computer software" or "commercial technical data" pursuant to the applicable Federal Acquisition Regulation and agency-specific supplemental regulations. As such, use, duplication, disclosure, modification, and adaptation of the Programs, including documentation and technical data, shall be subject to the licensing restrictions set forth in the applicable Oracle license agreement, and, to the extent applicable, the additional rights set forth in FAR 52.227-19, Commercial Computer Software--Restricted Rights (June 1987). Oracle USA, Inc., 500 Oracle Parkway, Redwood City, CA 94065.

The Programs are not intended for use in any nuclear, aviation, mass transit, medical, or other inherently dangerous applications. It shall be the licensee's responsibility to take all appropriate fail-safe, backup, redundancy and other measures to ensure the safe use of such applications if the Programs are used for such purposes, and we disclaim liability for any damages caused by such use of the Programs.

The Programs may provide links to Web sites and access to content, products, and services from third parties. Oracle is not responsible for the availability of, or any content provided on, third-party Web sites. You bear all risks associated with the use of such content. If you choose to purchase any products or services from a third party, the relationship is directly between you and the third party. Oracle is not responsible for: (a) the quality of third-party products or services; or (b) fulfilling any of the terms of the agreement with the third party, including delivery of products or services and warranty obligations related to purchased products or services. Oracle is not responsible for any loss or damage of any sort that you may incur from dealing with any third party.

Oracle, JD Edwards, and PeopleSoft are registered trademarks of Oracle Corporation and/or its affiliates. Other names may be trademarks of their respective owners.

# Contents

---

<b>FIGURES.....</b>	<b>4</b>
<b>PREFACE.....</b>	<b>5</b>
<i>Audience.....</i>	<i>5</i>
<i>Additional Information.....</i>	<i>5</i>
<i>Notational Conventions .....</i>	<i>5</i>
<i>E-Delivery.....</i>	<i>6</i>
<i>Manual History .....</i>	<i>6</i>
<b>CHAPTER 1 .....</b>	<b>7</b>
INSTALLATION PROCEDURES.....	7
<i>Creating a New Server Configuration .....</i>	<i>8</i>
<i>Adding a JNDI Property.....</i>	<i>8</i>
<i>Modifying JBoss Classpath .....</i>	<i>9</i>
<i>Installation of Insbridge.Fwk.APP (IBSS.ear).....</i>	<i>9</i>
<i>Starting the JBoss Server.....</i>	<i>10</i>
<i>Locating the Configuration Files.....</i>	<i>10</i>
<i>Accessing the Application .....</i>	<i>10</i>
<b>CHAPTER 2 .....</b>	<b>11</b>
CREATING A SOFTRATER DATABASE .....	11
<i>IBM DB2 .....</i>	<i>11</i>
<i>Microsoft SQL Server.....</i>	<i>12</i>
<i>ORACLE.....</i>	<i>13</i>
<b>CHAPTER 3 .....</b>	<b>14</b>
SUPPORT.....	14
<b>INDEX.....</b>	<b>15</b>

# Figures

---

Figure 1 – JBoss Server Folder .....	8
Figure 2 – JBoss Deploy Folder .....	9

# Preface

---

Welcome to the *Oracle Insurance Insbridge Rating and Underwriting JBoss Installation Guide*. This guide describes how to install and configure JBoss for SoftRater. SoftRater may be used in conjunction with the Oracle Insurance Insbridge Rating and Underwriting RateManager (RateManager) system to process rating requests or it may stand alone.

The Insbridge SoftRater Server (IBSS) is the container for all Insbridge web components including the SoftRater Engine. All independent Insbridge components will be contained in the IBSS.

## Audience

---

This guide is intended for technical personal, such as installers, system administrators and others tasked with configuring SoftRater that would be involved in the maintenance and operation of SoftRater or RateManager. The audience for this guide should have a thorough knowledge of JBoss.

## Additional Information

---

For more information, see these Oracle Insurance resources:

- Oracle Insurance IBSS User Guide

## Notational Conventions

---

This section explains the conventions used in this book:

- Menu selections are shown with arrows. For example, the command to select the **Print** choice from the **File** menu looks as follows:

Select **File**►**Print**

- File names, path names and actions to be taken are shown in **bold**.
- New or emphasized terms are shown in *italics*.
- `Monospace` type indicates code that appears on the screen or that you must enter.

## E-Delivery

---

The Insbridge Rating and Underwriting (IBRU) System is available as a download from the Oracle E-Delivery system. Downloaded files are zipped. Prior to installation, please make sure the source machine(s) where SoftRater for JBoss will be loaded has an unzip utility.

An unzip utility for most platforms is available on the E-Delivery download page.

Documentation from E-Delivery is in PDF format. Prior to installation, please make sure the source machine(s) where SoftRater for JBoss documentation will be loaded has a PDF reader.

Files are downloaded with part numbers as file names. Please make note of the part numbers you have downloaded and the corresponding file name. For example, if the SoftRater for JBoss 3.12.0 installation file is part # 15555-01, the file name should be V15555-01. This information may be required if you need to contact Oracle Insurance Support.

The JBoss for SoftRater version 3.12.0 zip file will contain:

- The 3.12.0-insbridge-jboss-eng File, which contains:
  - SR\_2.0.0.69 which holds the IBSS.ear file
  - Insbridge.net.softmaterconfig.xml

No license file is required.

If you are using Insbridge Framework Administrator and RateManager, SoftRater can be installed any time after the Insbridge Framework Administrator and RateManager have been installed. SoftRater must be installed prior to any users creating packages.

## Manual History

---

New editions incorporate any updates issued since the previous edition.

Edition	Publication Number	Product Version	Publication Date	Comment
1 <sup>st</sup> Edition	P01-773-01	V 3.11.01	December 2008	Initial release
2 <sup>nd</sup> Edition	P01-773-02	V 3.12.0	July 2009	Update Version

---

## Installation Procedures

The following is a quick list of the installation steps needed to perform a SoftRater for JBoss Installation:

1. Install (decompress) JBoss 4.2.3 version on target server.
2. Start the default server. If there are any error messages, please correct before continuing.
3. Go to <JBoss\_Folder>/server and create a copy of the default server (default folder) and rename it to SR\_Server.
4. Delete the Jaxen.jar file from <JBoss\_Folder>/server/SR\_Server/lib/ and replace it using JDOM\_1.1/Jaxen-Core.jar (This file can be downloaded from the following URL: <http://www.jdom.org/dist/binary/>).

Note: This modification allows the application to run, if this step is not executed the application will hang without reporting any errors.

5. Edit the file "JNDI.properties" located on <JBoss\_Folder>/server/SR\_Server/conf/ and add the following value to the end of the file:

INSBRIDGE\_APP\_DIR=<Path\_Of\_Configuration\_File>

6. Copy the provided IBSS.ear file to <JBoss\_Folder>/server/SR\_Server/deploy/
7. Start SR\_Server and test the application using the following URL:  
<http://<ServerName>:8080/IBSS>

### Development Notes:

Please be aware of the following items:

1. Please be aware that the deployment the EAR name will not be altered from release to release. JBoss adds the EAR filename as part of the EJB objects on deployment.

I.E. on JBoss EJB JNDI names are: "IBSS/SoftRaterEJB/local" and "IBSS/SoftRaterEJB/remote"

2. All SoftRater versions contain a core library. On JBoss, two files of the core library were changed:
  - a. RI\_Utl.java
  - b. XCustomProcessor.java

This was done because the Jaxen and JDOM implementations used by JBoss are not compatible with the original version used by the application. For this reason, these libraries needed to be updated to version 1.1 on the application library. This changes the interfaces used on these objects.

## Creating a New Server Configuration

---

To create a new server configuration go to “<JBoss\_Installation\_H>/server”, copy the default folder, and rename it to “SR\_Server”.

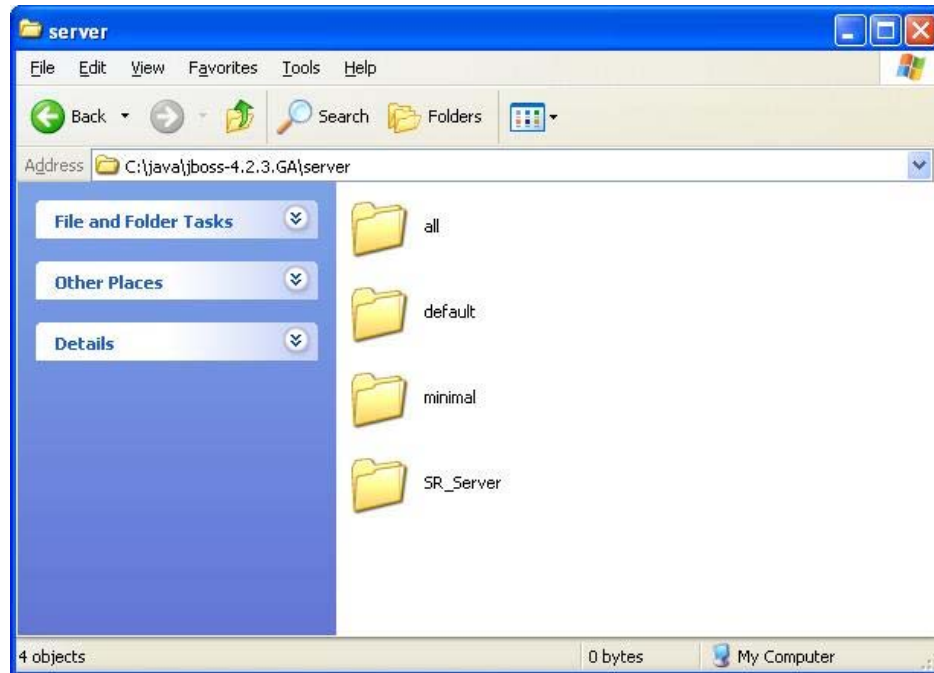


Figure 1 – JBoss Server Folder

## Adding a JNDI Property

---

To create a new JNDI property go to “<JBoss\_Installation\_Home>/SR\_Server/conf” folder and edit the “jndi.properties” file.

The file should look like this:

```
# DO NOT EDIT THIS FILE UNLESS YOU KNOW WHAT YOU ARE DOING
#
java.naming.factory.initial=org.jnp.interfaces.NamingContextFactory
java.naming.factory.url.pkgs=org.jboss.naming:org.jnp.interfaces
INSBRIDGE_APP_DIR=<Path_Of_Configuration_File>
insbridge.net.softmaterconfig.xml
```



## Modifying JBoss Classpath

---

In order to successfully run the SoftRater application you'll need to make the following modification to the JBoss server classpath:

- Delete Jaxen.jar file from <JBoss\_Installation\_Home>/server/SR\_Server/lib/ folder and copy to this same location the Jaxen-Core.jar, this file can be downloaded as part of JDOM 1.1 dependencies.

## Installation of Insbridge.Fwk.APP (IBSS.ear)

---

Deploying the IBSS.ear file on JBoss is a one step procedure, copy the provided file (IBSS.ear) to the following location: "<JBoss\_Installation\_Home>/server/SR\_Server/deploy"

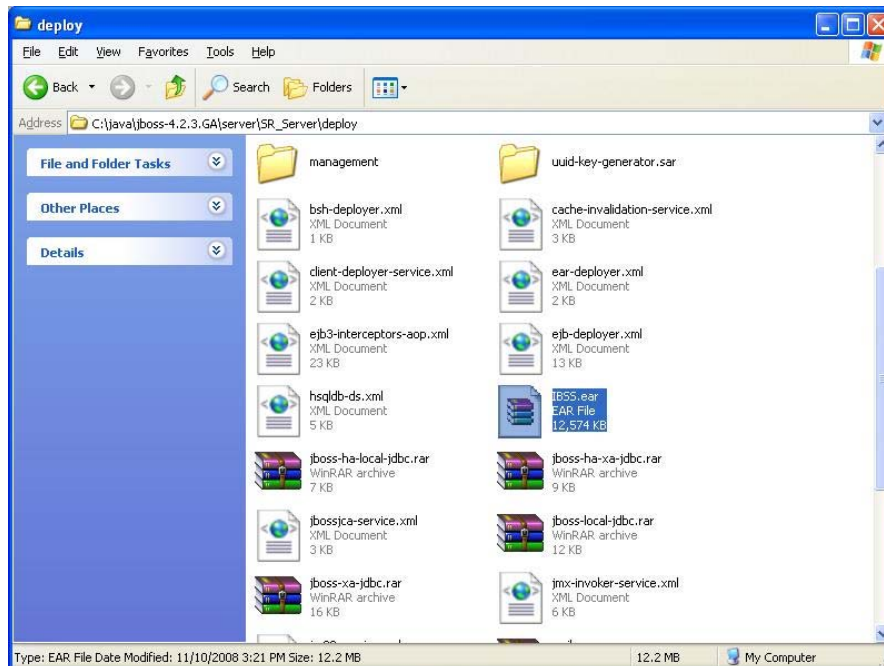


Figure 2 – JBoss Deploy Folder

## Starting the JBoss Server

---

To start the JBoss server open a console (Windows) or shell (Linux) and access the <JBoss\_Installation\_Home>/bin folder, on this location type the following command:

**Windows:**

Run -c SR\_Server -b <Host\_IP\_Address>

**Linux:**

Run.sh -c SR\_Server -b <Host\_IP\_Address>

## Locating the Configuration Files

---

You'll need to verify that the application configuration file exists on the path specified in **Adding a JNDI Property** section:

- insbridge.net.softmaterconfig.xml

## Accessing the Application

---

You may be able to access the application by typing <http://<ServerName or IP Address>:8080/IBSS>

**NOTE**

**Note:** Notice that if you changed the JBoss default port (8080) during the Server creation, you should change the default application port on the "[Update Application End Point](#)" option located in the Insbridge.Fwk.APP main page before accessing the application WebServices and methods.

---

## Creating a SoftRater Database

The Insbridge Framework Application container for the SoftRater J2EE EJB contains the JDBC connection drivers that support operational connectivity to the DBMS system listed before. It also contains vendor specific DDLs for the SoftRater operations database schema creation which can be altered by DBA's for setup compliance for varying corporate environments, i.e. TABLESPACE and SCHEMA target definitions.

To obtain Database Definition Language (DDL) scripts for a target DBMS type view the config/ddl subdirectory in the "Insbridge.Fwk.APP" WebSphere installation directory.

I.e.: \$WAS\_HOME/installedApps/NODENAME/Insbridge.Fwk.APP.ear/config/ddl

Please allow the DBA to review the scripts before attempting to create a SoftRater database schema.

The SoftRater EJB data access system contains all the required JDBC drivers for connectivity to the support DBMS's. TCP/IP connection visibility to the DB Platform is required along with the database server system configured connection PORT for operational use of the SoftRater system. No other supplemental drivers or libraries are needed to establish a connection.

### IBM DB2

---

SoftRater database schema is supported on all available DB2 database platforms.

#### JDBC Driver Class

"com.ibm.db2.jcc.DB2Driver"

For Native AS400 – "com.ibm.as400.access.AS400JDBCdriver"

#### Supported Version

7, 8

#### User Account Requirements

Create Table

Create Index

Query access to "SYSIBM.SYSTABLES"

## Configuration Settings

- **Required**

The query dynamics of the SoftRater system requires some modification to Configuration settings. The following Performance Configurations parameters required to the target SoftRater database.

Instance Level – ASLHEAPSZ >= 1024

Instance Level – QUERY\_HEAP\_SZ => 10240

Database Level – APPLHEAPSZ >= 1024

- **Recommended**

The query dynamics of the SoftRater system will benefit from the following modification to Configuration settings.

Instance Level – INTRA\_PARRALLEL (Yes) – For Symmetrical Processing Machines (CPU >=2)

Database Level – DFT\_DEGREE (-1) – For Symmetrical Processing Machines (CPU >=2). Allow the optimizer to determine the degree of intra-partition parallelism based on the number of processors and the type of query.

## Native z/OS

Support for IBM DB2 for native z/OS requires a specific set of the DDL scripts. They are labeled in the ddls/db2 directory with the ZOS DB2.ZOS prefix. DBA's should review these scripts, starting with the DB2.ZOS.SETUP.sql file that contains create templates for default; STORAGE GROUP, DATABASE, default TABLESPACE. All other table create scripts can be reviewed, altered and executed in any other to be consistent with chosen database standards.

## Microsoft SQL Server

---

### JDBC Driver Class

“com.microsoft.jdbc.sqlserver.SQLServerDriver”

### Supported Version

2000, 2005

### User Account Requirements

Create Table

Create Index

Execute on the SoftRater User Defined Stored Procedures

## ORACLE

---

SoftRater database schema is support by all available ORACLE database platforms.

### JDBC Driver Class

“oracle.jdbc.driver.OracleDriver”  
Using prefix jdbc:oracle:thin:

### Supported Version

9, 10

### User Account Requirements

Create Table  
Create Index  
Query access to “SYS.OBJ\$”

#### IMPORTANT

It is strongly recommended that any database modification be performed by a qualified database administrator (DBA). The database setup procedures and tasks require the skill set of a database administrator. If you are not a database administrator, please stop. Improper setup may result in unwelcome changes to the database. Please consult with a qualified database administrator before proceeding.

If you need assistance with an Oracle Insurance Insbridge Rating and Underwriting System product, please log a Service Request using My Oracle Support at <http://metalink.oracle.com>.

**Address any additional inquiries to:**

**Oracle Corporation**  
World Headquarters  
500 Oracle Parkway  
Redwood Shores, CA 94065  
U.S.A.

Worldwide Inquiries:  
Phone: +1.650.506.7000  
Fax: +1.650.506.7200  
[oracle.com](http://oracle.com)

# Index

.	
.EAR File Naming .....	7
<b>C</b>	
Changing	
Library Files .....	7
config/ddl subdirectory .....	11
Configuration Settings	
DB2 .....	12
DB2 Modifications .....	12
Creating	
New JNDI Property .....	8
New Server Configuration .....	8
<b>D</b>	
Database	
IBM DB2 Support .....	11
MS SQL Support .....	12
ORACLE Support .....	13
SoftRater .....	11
Database Definition Language Scripts .....	11
DB2	
zOS .....	12
DB2 Database	
Configuration Settings .....	12
JDBC Driver Class .....	11
Recommendations .....	12
SoftRater Database Schema .....	11
Supported Version .....	11
User Account Requirements .....	11
DBA .....	11
DBMS .....	11
DDL .....	11
DDL scripts	
zOS on DB2 .....	12
ddl\db2 Directory .....	12
Deploying IBSS.ear .....	9
Directory	
ddl\db2 .....	12
<b>E</b>	
Edition Notice .....	2

<b>I</b>	
IBRU .....	6
IBSS .....	5
IBSS.ear	
Deploying .....	9
Insbridge SoftRater Server .....	5
<b>J</b>	
Jaxen	
Used by JBoss .....	7
JBoss Server	
Starting .....	10
JBoss server classpath	
Modifying .....	9
JDBC Connection Drivers .....	11
JDOM	
Used by JBoss .....	7
JNDI Property	
Create New .....	8
<b>L</b>	
Library	
Files to Change .....	7
<b>M</b>	
Modifying	
JBoss server classpath .....	9
<b>N</b>	
Naming.EAR File .....	7
Notational Conventions .....	5
<b>O</b>	
ORACLE	
SoftRater Database Schema .....	13
ORACLE Database	
JDBC Driver Class .....	13
Supported Version .....	13
User Account Requirements .....	13

---

<i>P</i>	
Performance Configurations Parameters	
SoftRater Database .....	12

---

<i>Q</i>	
Quick List .....	7

---

<i>R</i>	
Requirements	
DB2 Database .....	11
ORACLE Database .....	13
SoftRater EJB Data Access System .....	11
SQL Server .....	12
TCP/IP Connection .....	11
RI_Utl.java .....	7

---

<i>S</i>	
Scripts	
Database Definition Language .....	11
Server Configuration	
Create New .....	8
SoftRater	
Supported Databases .....	11, 12, 13
SoftRater Database .....	11

---

SQL Server	
JDBC Driver Class .....	12
SoftRater Database Schema .....	12
Supported Version .....	12
User Account Requirements .....	12
Support .....	14

---

<i>T</i>	
Table of Contents .....	3
TCP/IP Connection	
To DB Platform .....	11

---

<i>W</i>	
WebSphere	
Viewing in Installation Directory .....	11

---

<i>X</i>	
XCustomProcessor.java .....	7

---

<i>Z</i>	
z/OS	
BD2 .....	12
ZOS DB2.ZOS .....	12

---